

IBM Cognos Aerospace and Defence Special Interest Group

Steve Shepherd

3 June 2009

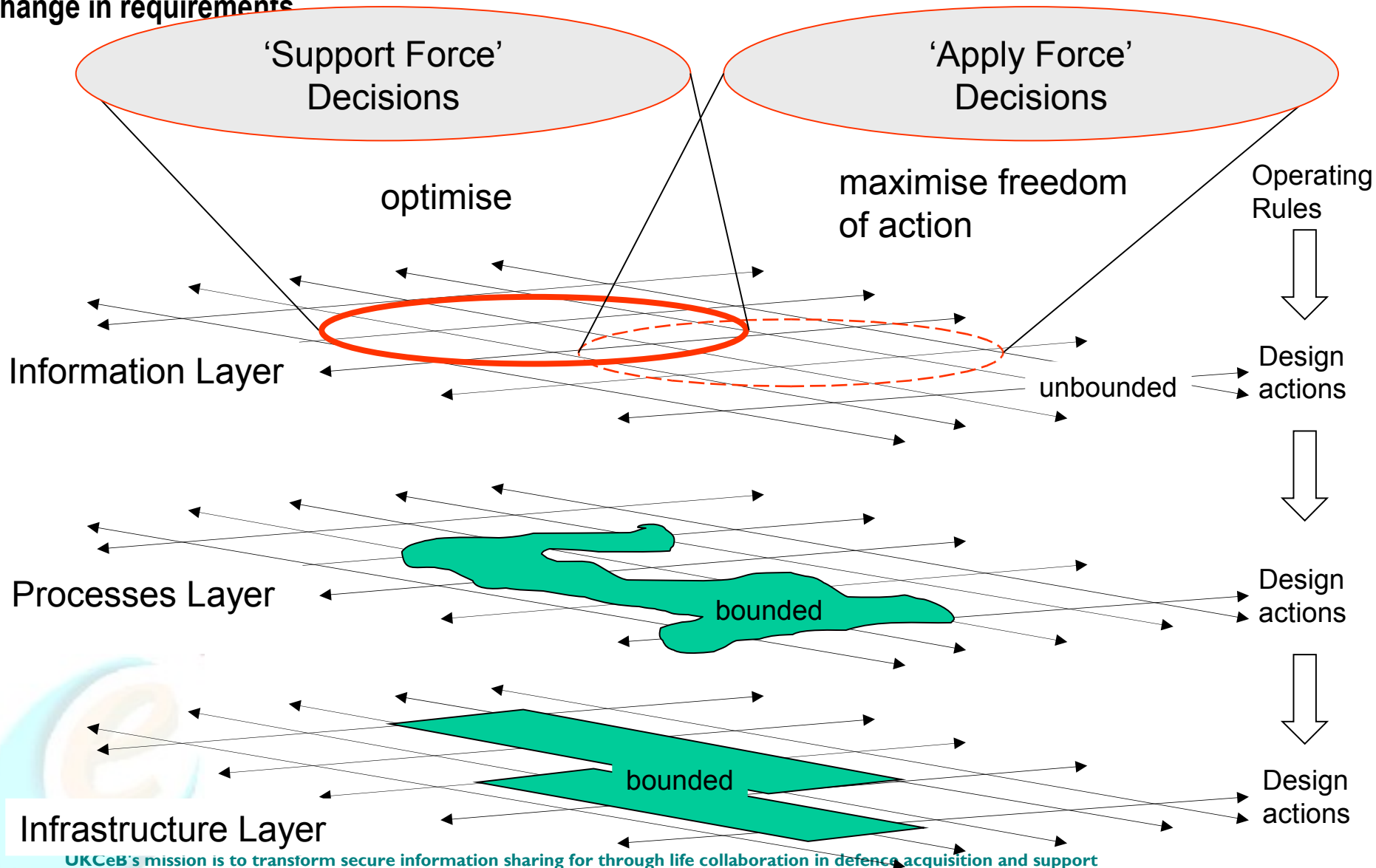
UK Council for Electronic Business
6a Pinkers Court, Briarlands Office Park
Gloucester Road, Rudge Way, Bristol. BS35 3QH
01454 410 550
www.ukceb.org

Reference:

The nature of the problem: the MOD support chain



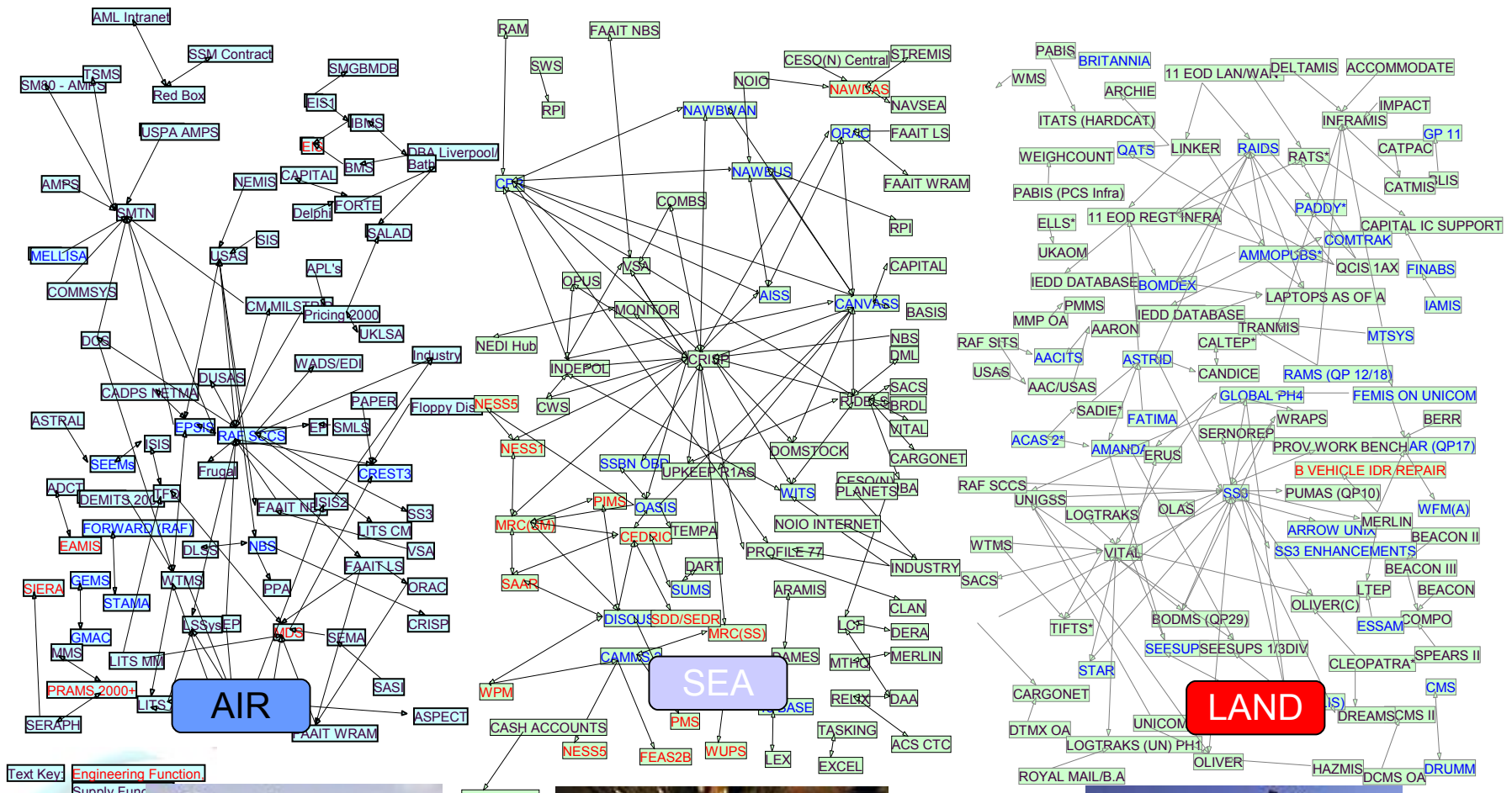
Design of support must be derived top down from the decisions required to direct action to maximize the freedom of action of operational commanders, and solutions should be designed to remain open to change in requirements



Defence Logistic Vision

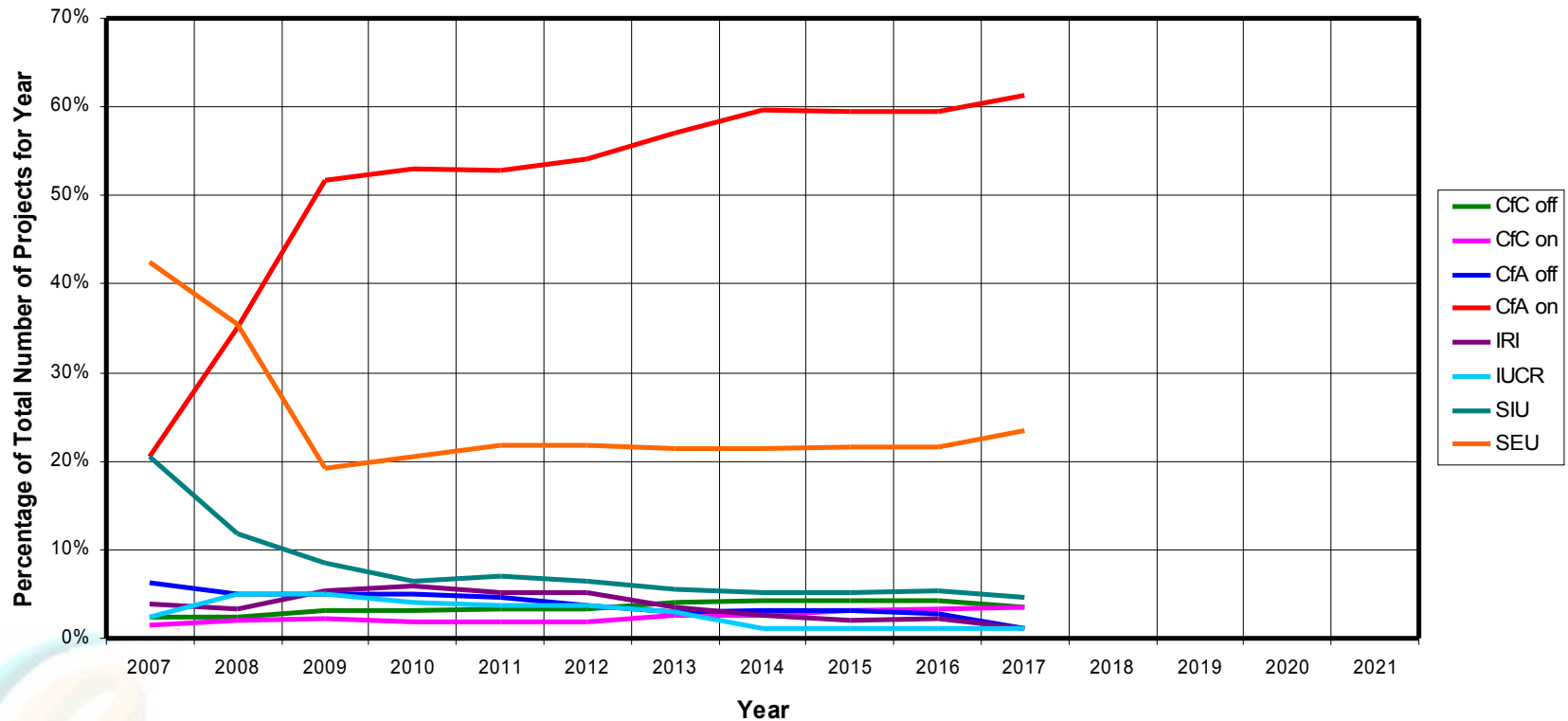
The Defence Logistic Vision envisages a **highly effective, agile and networked logistic capability** that underpins the operational commander's ability to execute his mission successfully. This capability will be derived from **joint, integrated and interoperable support** concepts, which have been tested and developed to provide the military commander with confidence in his ability **to deliver effect at the desired tempo**. Success will be built on adaptable systems and force elements combined with **standardised logistic processes and procedures**.

The nature of the problem

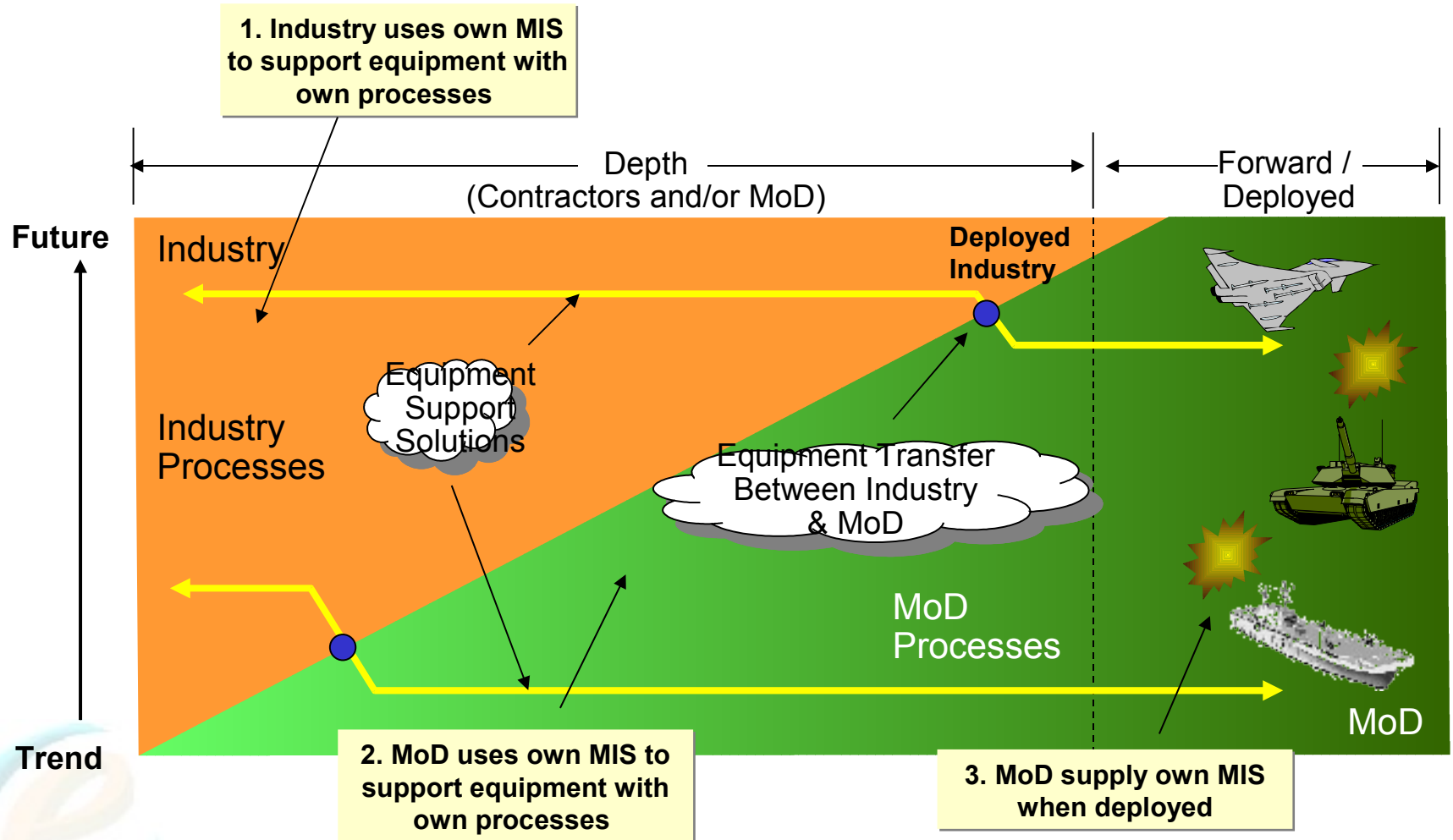


The Challenge of CLS / CfA - Procurement Landscape

Support Options Matrix (SOM) Category Forecast - Pan Defence



MoD / Industry Landscape

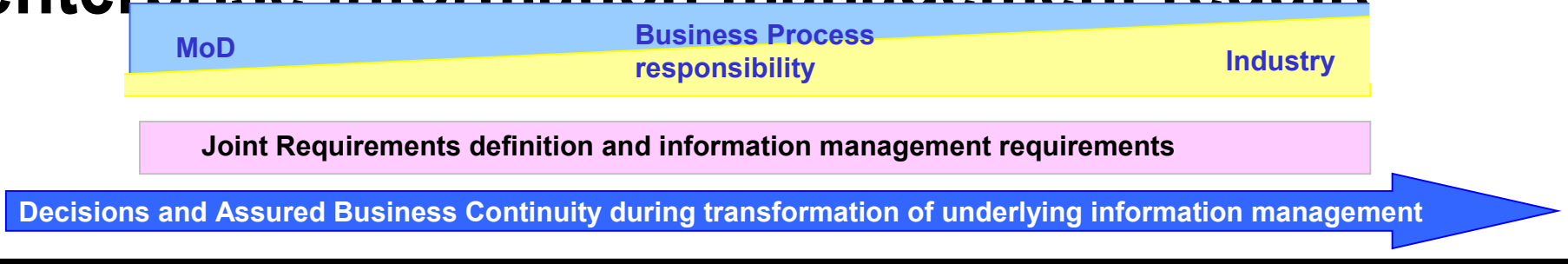


Key CLS/CfA User Principles

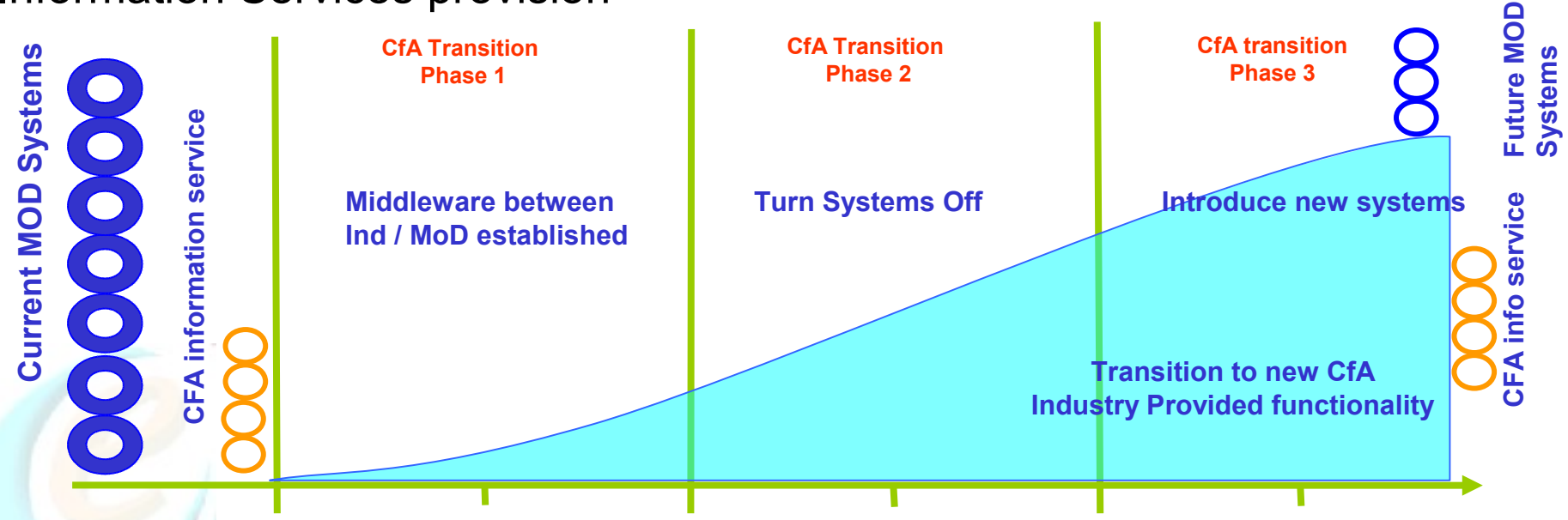
Require a process that delivers predictable and reliable access to data to reduce CLS/CfA contract risks:

- Long Term / Through Life
- Data required mainly in unprocessed form not information
- High %age of captured data required
- Agile to changing and evolving needs
- Secure - IP protected
- Reciprocal visibility / Exploitation of information as a joint asset
- CLS/CfA contractors will use its own “IS tools of the trade”
- Builds upon the LCIA functional model
- Underpinned by open architectures and by common data exchange standards to reduce costs of data and Through Life CLS / CfA

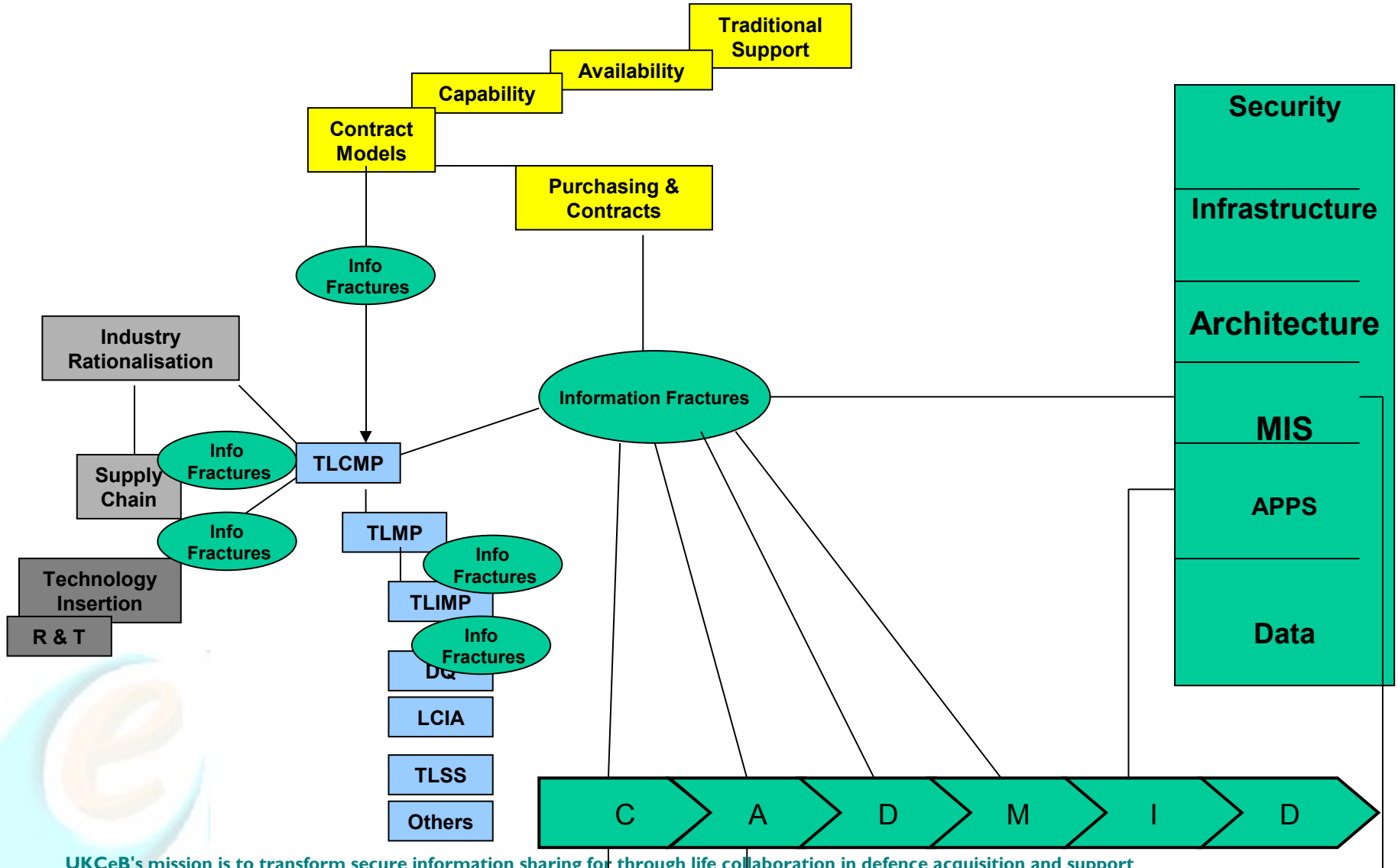
To achieve the transformation from current CLS contracts to the future goals we need to establish enterprise information management requirements



Information Services provision



DIS – Information Availability?



THE LOGISTICS NEC PROGRAMME
DELIVERING
FUTURE LOGISTIC INFORMATION SERVICES (FLIS)



“The end state for the Log NEC Programme is an agile and responsive capability that is able to proactively manage the logistic support chain through effective decision making based on accurate and timely information. It will be designed to manage a high rate of operational change and at the same time be capable of planning and delivering initiatives / projects that seek to provide continuous improvement within Defence Logistics.”

Air Vice Marshall Matt Wiles – Director Joint Support Chain

Architectural Implications

- Need to get a grip of the processes
 - coherence within the MOD and with OEM partners
 - continuous and step change business process improvement
 - explicitly establish the link and then manage logistic processes in the real world and those coded in logistic applications
- To do this we need to address all components of the logistics enterprise architecture – business, information, data and technical

THE LOGISTICS NEC PROGRAMME
 DELIVERING
 FUTURE LOGISTIC INFORMATION SERVICES (FLIS)

This Log NEC Prog rich picture is a representation of the business activities in support of the battlespace and no processes should be inferred

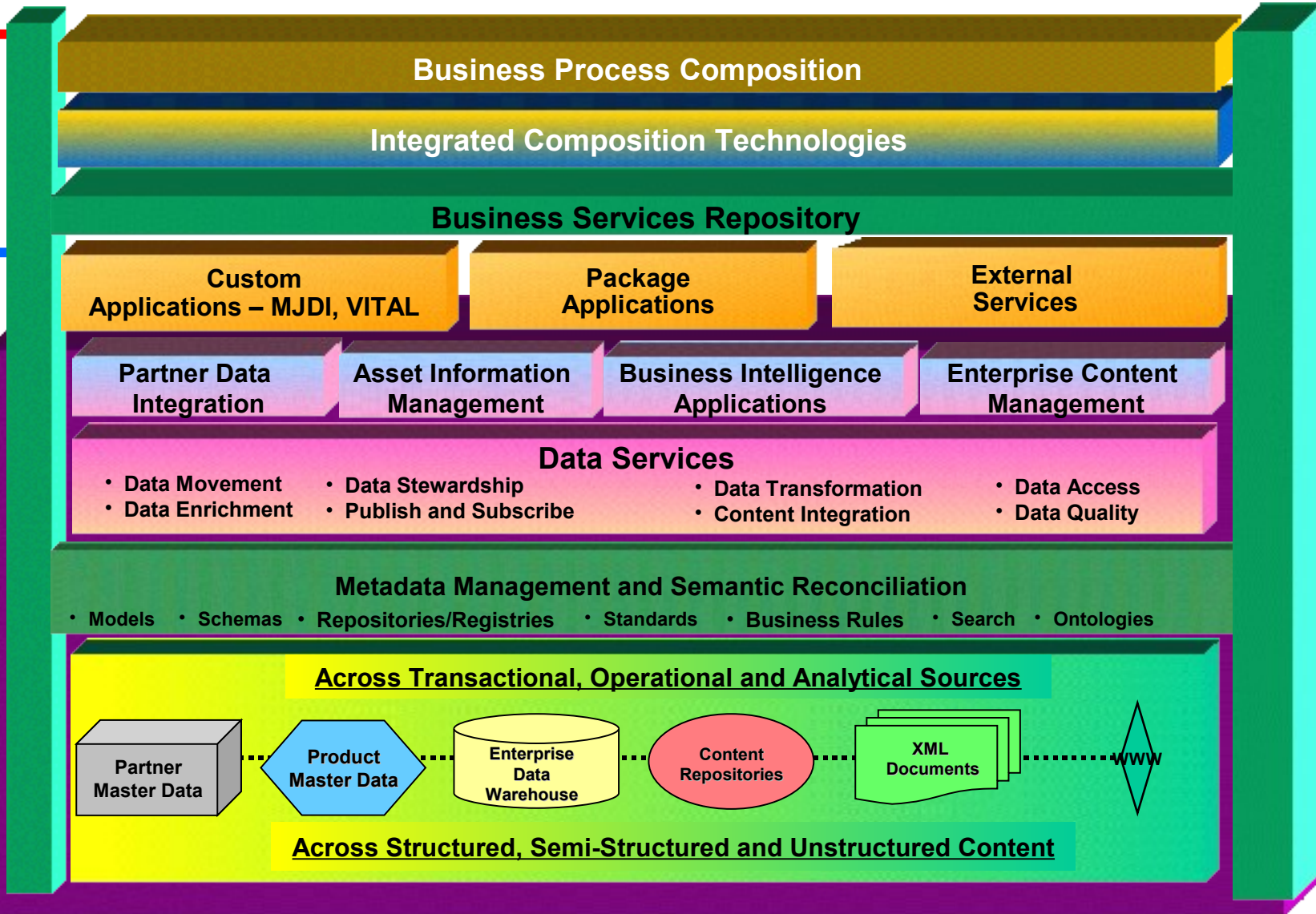


Support Chain Information Management

Business Process Platform

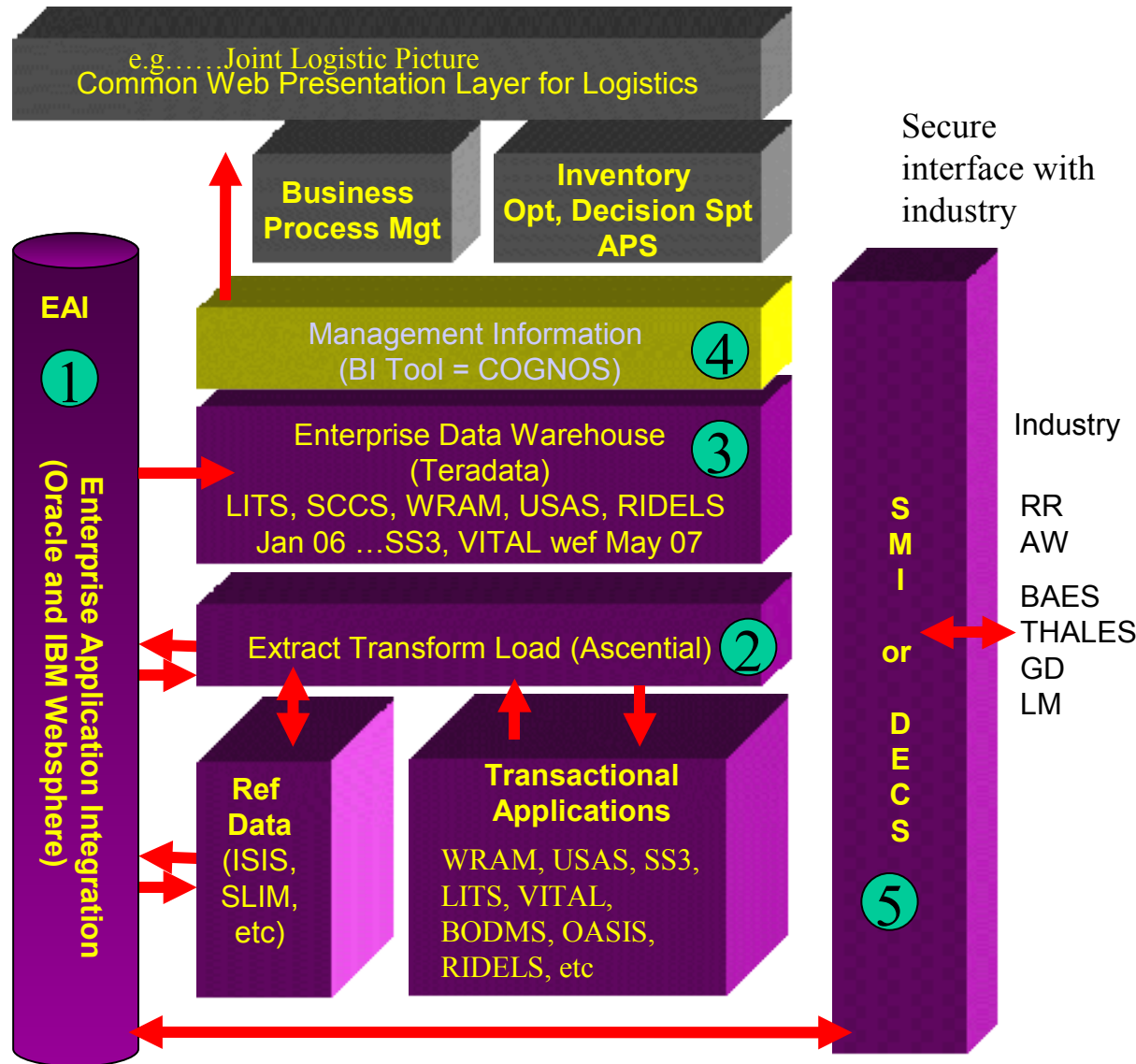
Application Portfolio

Enabling EIM Infrastructure

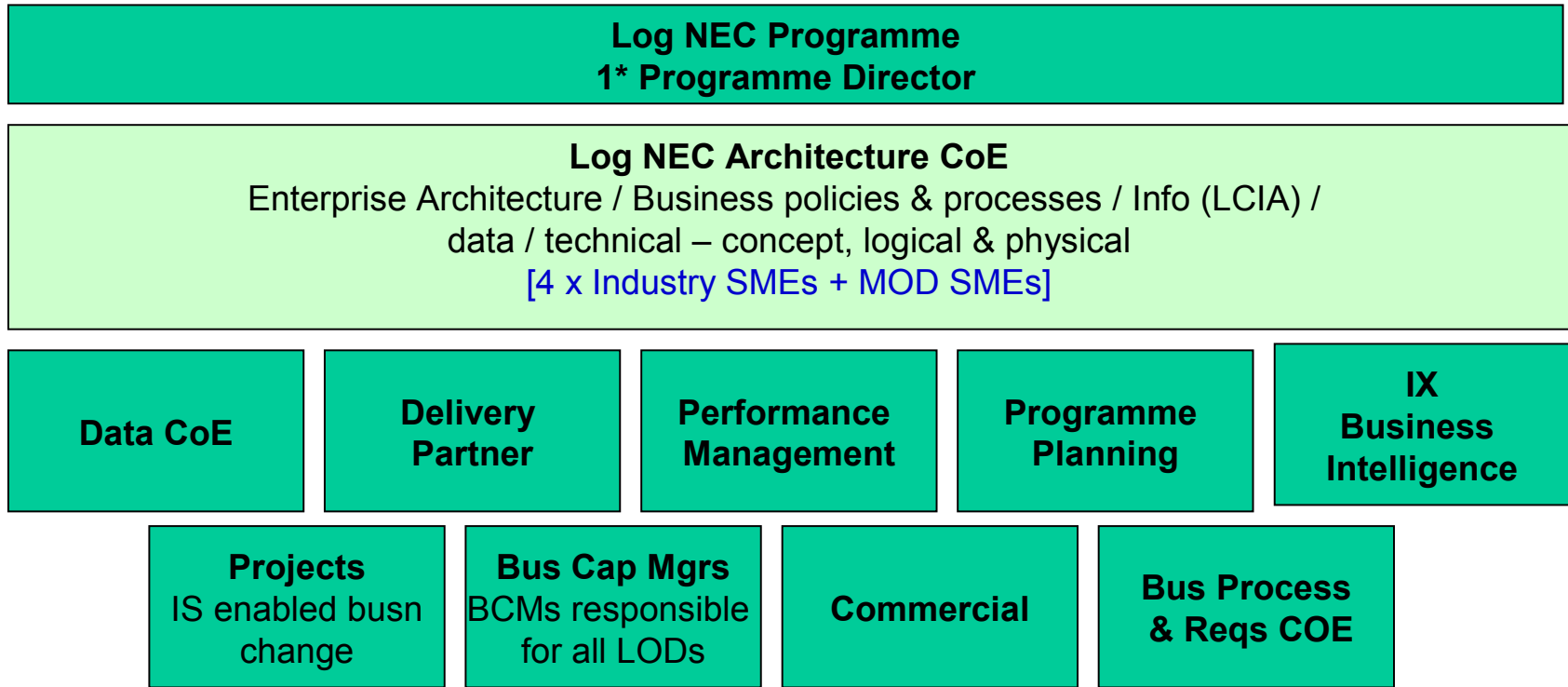


Support Chain Application Architecture

- ❑ Seamless integration of specialist applications underpinning processes – MOD or industry ①
- ❑ Ability to extract data from transactional applications – flexible, user driven, timely, affordable ②
- ❑ Data quality ③
- ❑ Store transactional data from multiple systems ③ and interrogate that data using business intelligence tools
- ❑ Be able to change business processes without necessarily having to hard code those changes into legacy applications ④
- ❑ Provide a common presentational layer for logisticians across Defence
- ❑ A secure interface with our industrial partners ⑤



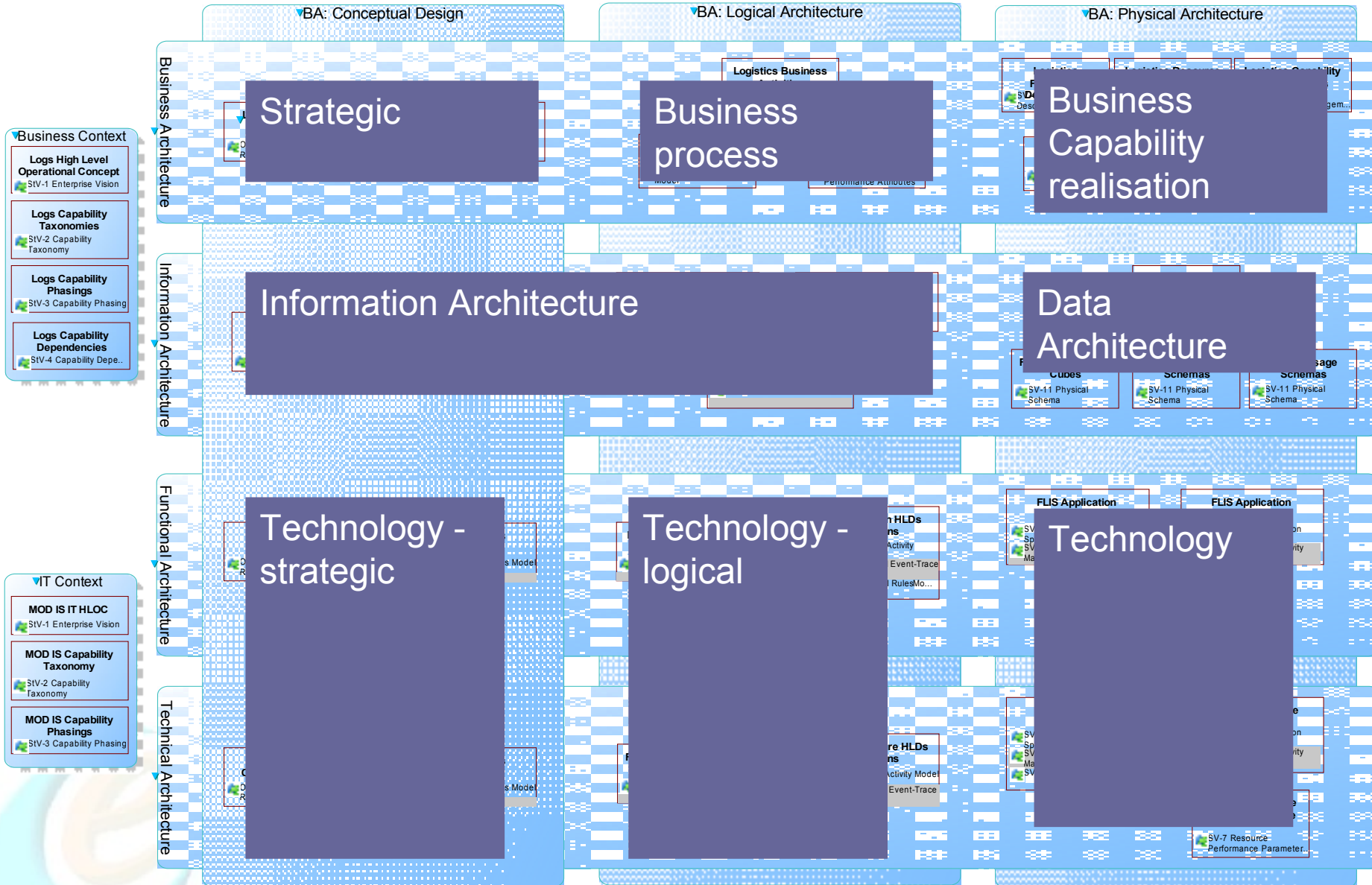
Logistics NEC Programme

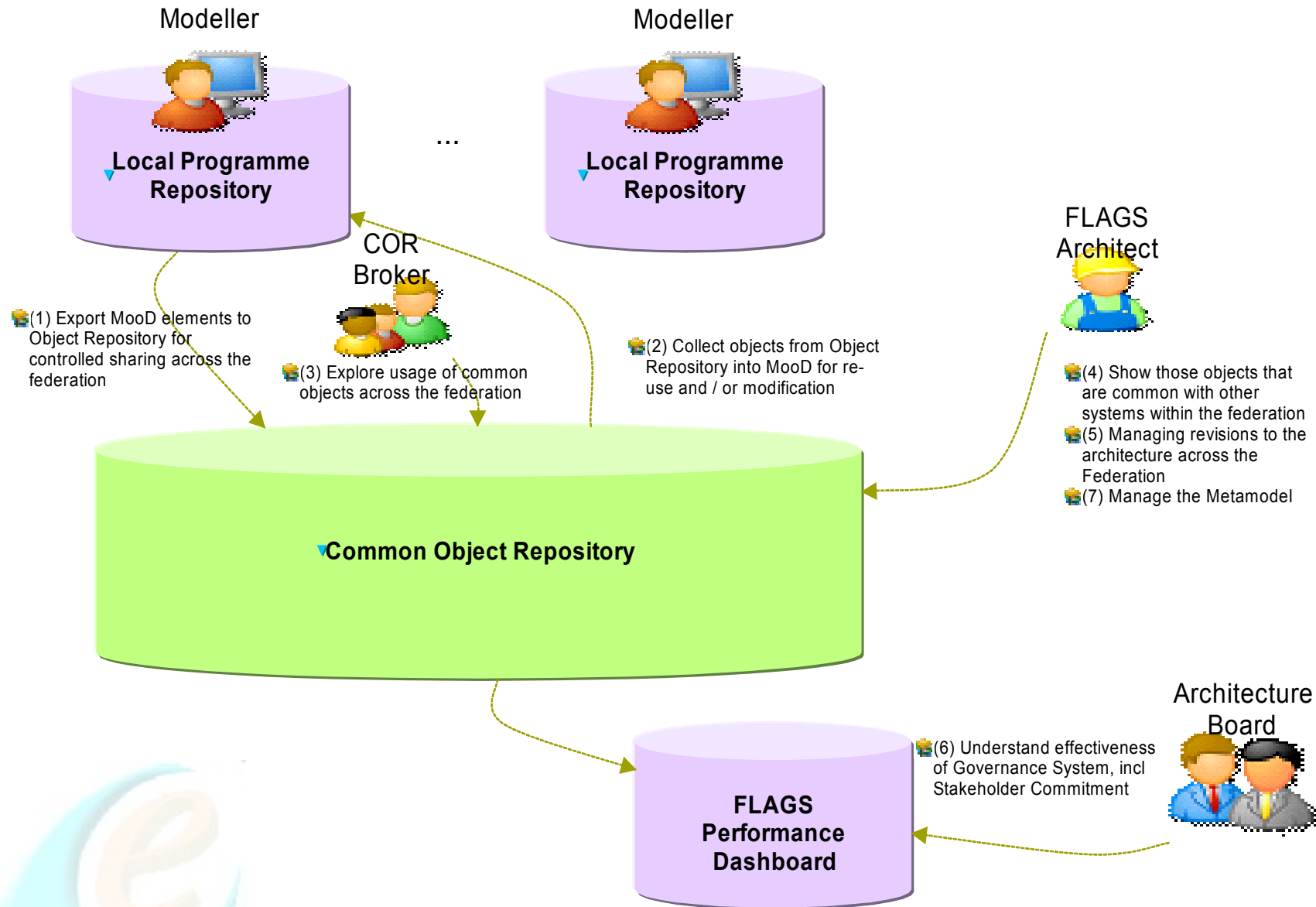


“The end state for FLIS is an agile and responsive capability that is able to proactively manage the support chain through effective decision making based on accurate and timely information. It will be designed to manage a high rate of operational change and at the same time be capable of planning and delivering initiatives / projects that seek to provide continuous improvement within Defence Logistics.”

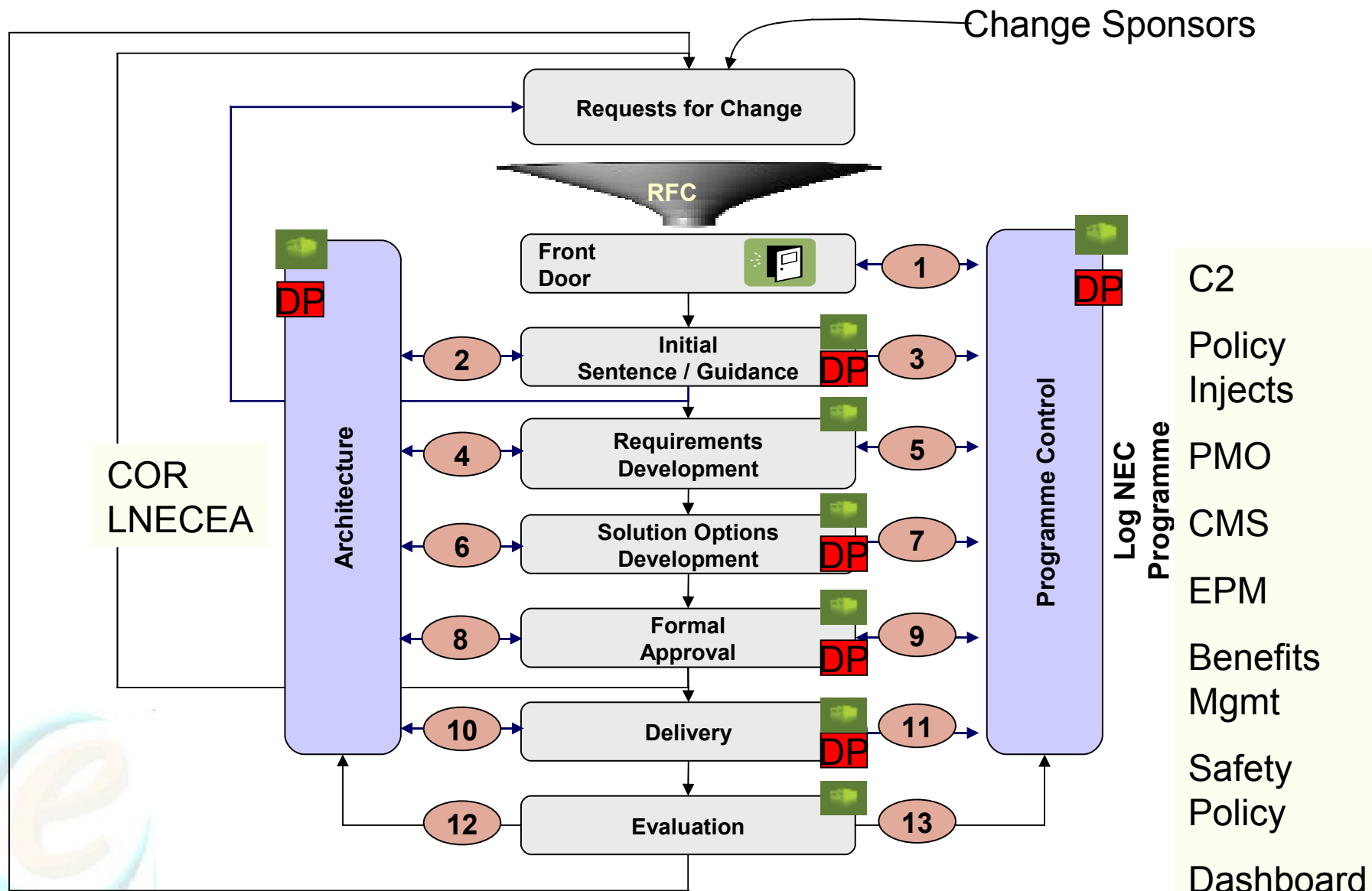
AVM Matt Wiles

Logistics NEC Architecture AV-1

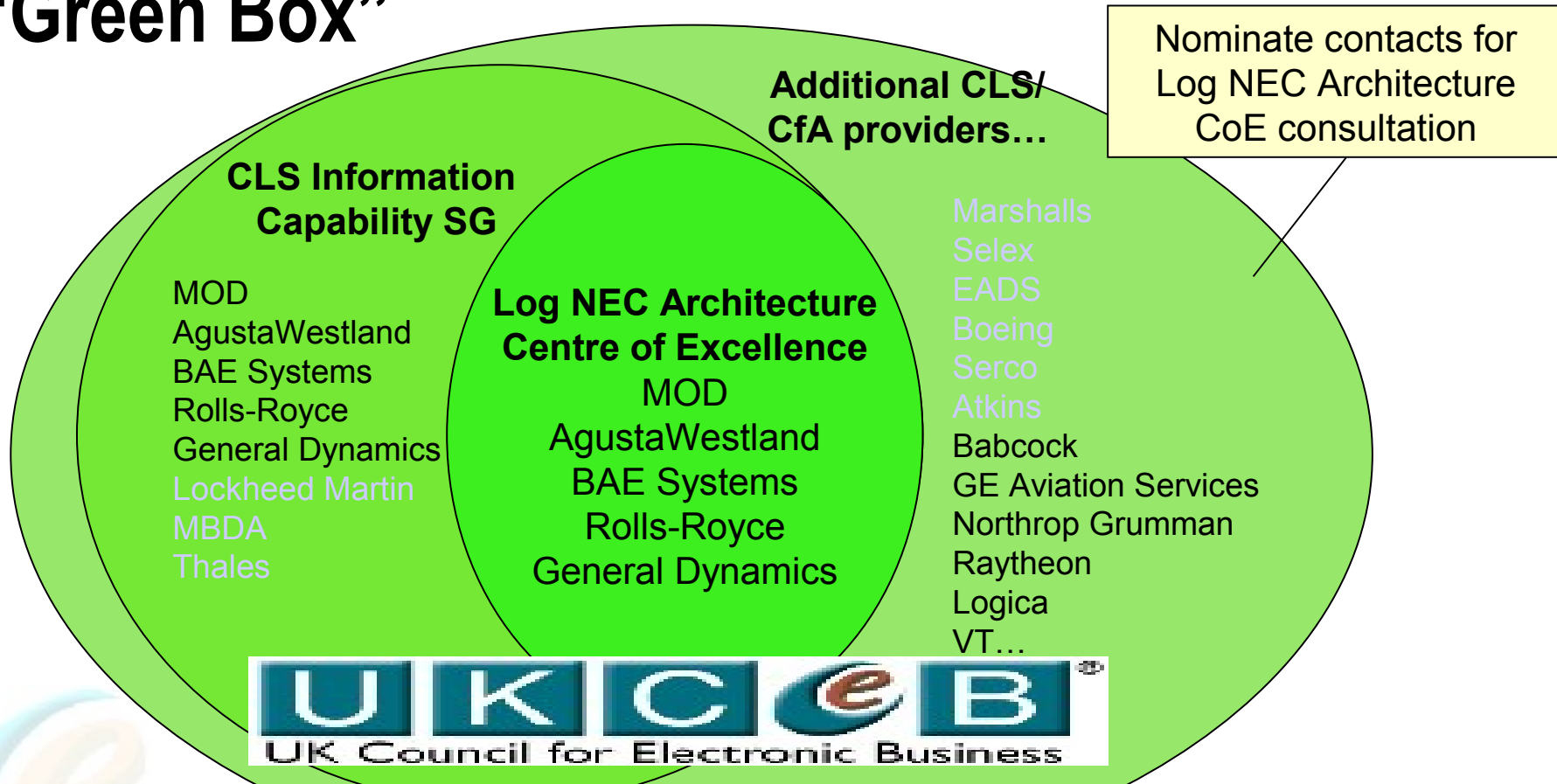




LogNEC Change Process



CLS/CfA providers engagement with the MOD Log NEC transformation activities - “Green Box”



“If CLS Providers, including those not currently engaged in the Green Box, cannot be convinced that the ‘process’ works for them, then the enduring capability is unlikely to be implemented.”

IBM Cognos Aerospace and Defence Special Interest Group

Keen to hear today from the experts how
many of these issues can be addressed