

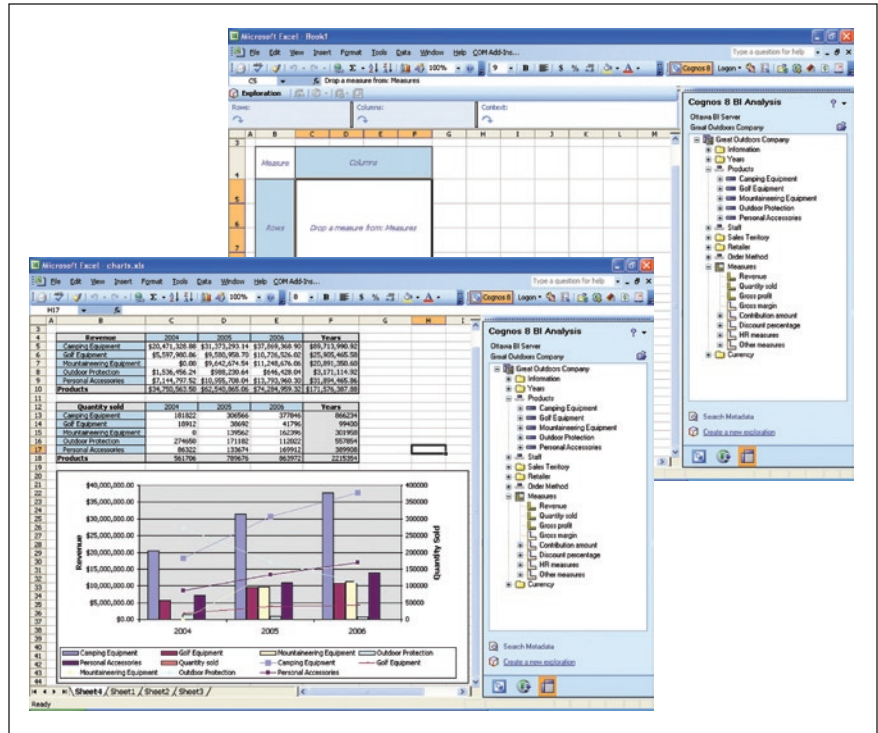
IBM Cognos 8 BI Analysis for Microsoft Excel

Overview

IBM Cognos® 8 BI Analysis for Microsoft® Excel® brings the benefits of enterprise business intelligence (BI) to your Microsoft Excel spreadsheets. It provides a way for business analysts, financial analysts, line-of-business managers and others to take advantage of Microsoft Excel to perform flexible, interactive exploration and analysis of multidimensional data.

The ability to conduct drag-and-drop exploration and analysis of controlled BI data in Microsoft Excel means that business analysts can work in their spreadsheets using trusted, secure information from IBM Cognos 8 BI, as well as from other data sources. Using formula-based data access, analysts can answer key questions, solve business problem and present results in ways that help drive corporate performance.

The self-service nature of IBM Cognos 8 BI Analysis for Microsoft Excel means that users do not depend on IT support to get the job done.



Using IBM Cognos 8 BI Analysis for Microsoft Excel, users can explore and analyze multidimensional data in a familiar Microsoft Excel workspace, leveraging all of Microsoft Excel's features.

Technical Specifications

IBM Cognos 8 BI for Microsoft Excel is integrated with the rest of the IBM Cognos 8 platform, enabling analysts to use their multidimensional explorations as the basis for a broader distribution of information within IBM Cognos 8 BI's proven reporting and analysis capabilities.

Flexible exploration and analysis

IBM Cognos 8 BI Analysis for Microsoft Excel overcomes the limitations of other Microsoft Excel-based solutions.

Built for use with existing versions of Microsoft Excel, it does not require a platform upgrade. Its single, intuitive interface for all exploration and analysis functions integrates seamlessly with the existing Microsoft Excel workspace.

Unlike many BI products that provide access to a subset of information or are lacking a complete, integrated enterprise BI solution, IBM Cognos products provide interactive

IBM Cognos 8 BI Analysis for Microsoft Excel

exploration and analysis for Microsoft Excel users across all multidimensional sources while meeting the company-wide demands of IT, finance, and business. IBM Cognos 8 BI Analysis for Microsoft Excel offers a complete range of BI capabilities on a single, proven platform, with common metadata and security to ensure consistent accurate information across the enterprise.

Features and Benefits

Benefits for business

IBM Cognos 8 BI Analysis for Microsoft Excel provides business users with a wide range of benefits.

Ease of use

- Easy to learn – Explore, perform flexible analysis, and solve problems in a working environment you already know.
- A single, intuitive interface – Select, filter data, and define layouts to gain a managed view of information with just one interface that is intuitive and integrates seamlessly with Microsoft Excel.
- Independence from IT – Self-service capabilities mean that business users do not need IT support to combine trusted IBM Cognos BI information with other data sources.

Completeness

- Leverage all Microsoft Excel features – Use all of Microsoft Excel's capabilities to enrich business scenarios and present results that are easy to understand and leverage again.

- Include multiple data sources – Explore and analyze multidimensional information from multiple heterogeneous data sources, including planning and consolidation and dimensionally modeled relational data sources.
- Complete, trusted information – IBM Cognos 8 BI data analyzed in Microsoft Excel is sourced from the comprehensive, trusted IBM Cognos 8 BI foundation, which means consistency, transparency and compliance.

Flexibility and reliability

- A formula-based approach – Express information as formulas in Microsoft Excel. Includes the ability to manage query parameters so that users can fully leverage cell-based layouts.
- Live connection to BI information – A direct connection to IBM Cognos 8 BI, and continual data refresh, ensures up-to-the-minute accuracy and reliability when exploring in Microsoft Excel.
- Automatic refresh – Make changes to analysis or queries, including formatting revisions such as inserting, deleting or switching rows and columns. Refresh occurs automatically when you open or explore an analysis or change calculations and formulas. Refresh can also be done on demand at any time.

- Combine Microsoft Excel calculations with IBM Cognos 8 BI data – When data refreshes Microsoft Excel calculations and charts change. As queries evolve through drill down, expansion, or filtering, linked calculations automatically accommodate the new layout.
- Reuse exploration results – Use the results of data exploration as queries for other worksheets or in other parts of the IBM Cognos 8 BI reporting and analysis solution.

Benefits for IT

IBM Cognos 8 BI Analysis for Microsoft Excel benefits IT as well:

- Self-service – IT does not need to spend valuable resources supporting the analysis needs of a single, unique audience.
- Secure – IBM Cognos 8 BI Analysis for Microsoft Excel leverages the same single IT security framework used across the entire IBM Cognos performance management foundation.
- No proprietary data limitations – Exploration and analysis is not limited to proprietary data sources.
- BI standardization – The enterprise can further leverage the value of IBM Cognos 8 BI by addressing the needs of a new and important audience of Microsoft Excel-based users who must leverage consistent, accurate business intelligence in a spreadsheet environment.

Feature Overview

Business intelligence for all users

By providing a way for those who want or need to work in a spreadsheet environment to flexibly analyze trusted, secure information from IBM Cognos 8 BI and other data sources, IBM Cognos 8 BI Analysis for Microsoft Excel extends IBM Cognos support for Microsoft® Office® and joins solutions already in place for IBM Cognos 8 Controller, IBM Cognos 8 Planning, and IBM Cognos 8 Go! Office. IBM Cognos 8 BI Analysis for Microsoft Excel augments IBM Cognos 8 Go! Office, which allows users to view and consume existing BI content in Microsoft® Word, Microsoft® PowerPoint® and Microsoft Excel by letting you develop new BI content in Microsoft Excel through exploration and analysis.

This support for Microsoft Excel allows organizations to extend the complete and proven capabilities of IBM Cognos 8 BI to even more users across the enterprise, enabling them to make the faster and more effective decisions that drive superior performance.

IBM Cognos 8 BI Analysis

IBM Cognos 8 BI Analysis for Microsoft Excel lets users analyze information from within Microsoft Excel and it is just one of the ways that you can use Analysis with IBM Cognos 8 Business Intelligence. Users can also perform multidimensional analysis quickly and easily with only a browser. IBM Cognos 8 Business Intelligence Analysis allows organizations to explore their data, identify trends and probe more deeply to discover what drives their

numbers. They can view all dimensions of their business, regardless of where their data are stored. IBM Cognos' online analytical processing (OLAP) technology lets them analyze large volumes of data. Their analysis queries can be saved or integrated with other tools in the IBM Cognos 8 platform. Users in various departments can view different aspects of the company's performance in a secure environment, with data representing a single version of the truth across the enterprise.

About IBM Cognos BI and Performance Management:

IBM Cognos business intelligence (BI) and performance management solutions deliver world-leading enterprise planning, consolidation and BI software, support and services to help companies plan, understand and manage financial and operational performance. IBM Cognos solutions bring together technology, analytical applications, best practices, and a broad network of partners to give customers an open, adaptive and complete performance solution. Over 23,000 customers in more than 135 countries around the world choose IBM Cognos solutions.

For further information or to reach a representative: www.ibm.com/cognos

Request a call

To request a call or to ask a question, go to www.ibm.com/cognos/contactus. An IBM Cognos representative will respond to your enquiry within two business days.



© Copyright IBM Corporation 2009

IBM Canada
3755 Riverside Drive
Ottawa, ON, Canada K1G 4K9

Produced in Canada
February 2009
All Rights Reserved.

IBM, and the IBM logo are trademarks of International Business Machines Corporation in the United States, other countries or both. For a complete list of IBM trademarks, see www.ibm.com/legal/copytrade.shtml.

Microsoft, Windows, Windows NT, and the Windows logo are trademarks of Microsoft Corporation in the United States, other countries, or both.

Other company, product and service names may be trademarks or service marks of others.

References in this publication to IBM products or services do not imply that IBM intends to make them available in all countries in which IBM operates.

Any reference in this information to non-IBM Web sites are provided for convenience only and do not in any manner serve as an endorsement of those Web sites. The materials at those Web sites are not part of the materials for this IBM product and use of those Web sites is at your own risk.