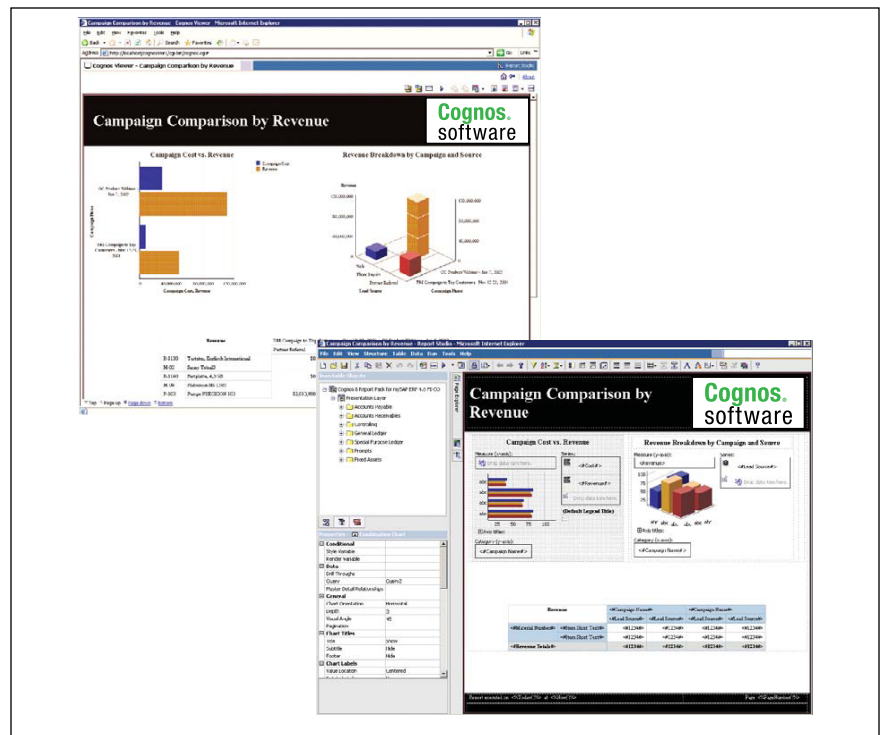


# IBM Cognos 8 Business Intelligence for salesforce.com

## Overview

**IBM Cognos® 8 Business Intelligence (BI) for salesforce.com brings the power of IBM Cognos reporting, analysis, scorecarding, dashboards, and business event management to the salesforce.com CRM solution. IBM Cognos 8 BI for salesforce.com allows business users to access data in salesforce.com and combine it with current and historical data from other transactional systems and data warehouses. The result: a complete, consistent view of information and solid foundation for improved decision-making.**

**IBM Cognos 8 BI is easier to deploy, reduces IT costs by avoiding specialized resources, presents the same interface as salesforce.com, simplifies changes, balances providing on-line data with off-line data, presents salesforce.com data in business terms without special coding, reduces system impact through caching of frequently requested queries, effective security, and faster distribution with reports being published in several formats.**



## Technical Specifications

- Can be used to access all salesforce.com CRM applications—Sales Force Automation, Marketing Automation, Customer Service & Support, Partner Relationship Management, Analytics—and custom applications built on the AppExchange platform
- Leverages only salesforce.com -approved interfaces and Web interfaces with no need for IT to make any request modifications to existing salesforce.com environment
- A single, modern Web services architecture with a common zero footprint, browser-based environment that requires no desktop installs, plug-ins, or applets
- No coding required, eliminating the need for expensive, specialized resources
- The same technology for BI query and extraction of salesforce.com and non-salesforce.com data
- A data adaptor optimized for query performance, using specialized query algorithms

- Auto-generation of Sforce Object Query Language (SOQL) calls to SObjects that enables business users to self-service
- Security features that provide one controlled access method for salesforce.com that leverages web services and the business logic of the salesforce.com environment
- Ability to publish in formats such as HTML, Microsoft® Excel®, Adobe® PDF, CSV, XML, and more
- Access modes that let users interact with reports, analyses, and other BI content using familiar applications or devices

### Features and Benefits

IBM Cognos 8 BI for salesforce.com is the ideal solution for users who:

- Want a single BI solution that incorporates all of their critical information.
- Need to combine salesforce.com data with other data sources.
- Want to see current and historical data about customers side-by-side.
- Need to reconcile data across systems to gain a complete view of customers.
- Want to capture snapshots of salesforce.com data for time-period analysis.
- Need to supplement data warehouse data with up-to-the-minute information.
- Want to supplement salesforce.com reporting with a full breadth of BI capabilities not otherwise available.

Through the IBM Cognos 8 BI for salesforce.com data adaptor, users can connect directly to salesforce.com for up-to-the-minute BI needs. Or, alternatively, capture data snapshots of salesforce.com to enable BI on historical data and time-period analysis. With either approach, business users can quickly and easily use IBM Cognos software to create a rich variety of reports and dashboards that feature cascading prompts, conditional highlighting, interactive visuals, and other robust functionality. The IBM Cognos 8 BI for salesforce.com also enables business users to answer new questions by providing salesforce.com data in context with their other enterprise business information, without the need for IT intervention.

With IBM Cognos 8 BI for salesforce.com, users can derive fresh perspectives by creating new views of salesforce.com data that cross module boundaries, combine data from disparate tables, and derive calculations to gain new insights not possible through standard salesforce.com reporting. By combining salesforce.com data with IBM Cognos 8 BI, organizations can finally gain a complete, consistent enterprise view across all information and all data sources. Users can capture snapshots of current salesforce.com data to build historical data sets for time period trending, historical analysis, and forecasting beyond the traditional salesforce.com reporting capabilities.

IBM Cognos 8 BI for salesforce.com can be used to access all salesforce.com CRM applications, including Sales Force Automation, Marketing Automation, Customer Service & Support, Partner Relationship Management, Analytics, and custom applications built on the AppExchange platform. IBM Cognos 8 BI for salesforce.com leverages only salesforce.com-approved interfaces and Web interfaces so there is no need for IT to make any request modifications to your existing salesforce.com environment.

### *Business Benefits of IBM Cognos 8 Business Intelligence For salesforce.com*

IBM Cognos 8 BI for salesforce.com offers your business users the following key advantages:

- Create reports and dashboards on any salesforce.com objects. Generate reports on as many salesforce.com metrics as you require: opportunities, accounts, leads, contacts, campaigns, and more. You can also add your own custom objects to dashboards and reports.
- Integrate multiple data sources. Combine salesforce.com data with your other financial, product, and other enterprise data sources, whether inside or outside your company's firewall.
- Powerful drill-down analytics. Examine metrics in the finest detail for root-cause analysis and historical trending. Track performance across multiple dimensions: for example,

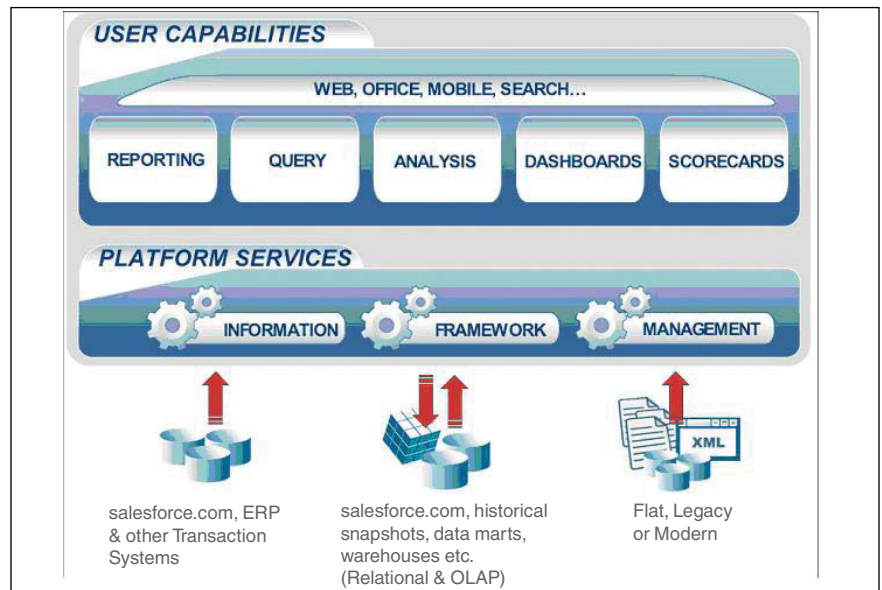
product sales across multiple regions, multiple quarters, and multiple sales reps.

- Exception management. Set up custom alerts, so you can receive immediate notification when a key metric crosses a critical threshold.
- Mobile Support. View rich, interactive reports delivered on your PDA using the IBM Cognos 8 Go! Mobile capability.

*IT Benefits of IBM Cognos 8 Business Intelligence For salesforce.com*

IBM Cognos 8 BI for salesforce.com offers the following key advantages for IT:

- **Easier deployment:** IBM Cognos 8 BI is built with a single, modern Web services architecture. The common zero footprint, browser-based environment requires no desktop installs, plug-ins, or applets – minimizing the resources required for development, deployment, and maintenance.
- **Lower IT costs:** With no coding required, IT can eliminate the need for expensive, specialized resources. With IBM Cognos 8 BI, IT can lower the time, cost, and risk associated with software development, customization, and maintenance.
- **Reduced complexity:** Uses the same technology for BI query and extraction of salesforce.com and non-salesforce.com data. One skill set, one interface to manage.



- **Adaptability to changing conditions:** IBM Cognos 8 BI lets IT insulate the business from changes and control the rollout of new customizations and data source access.
- **Optimized end-user performance:** Create an intelligent balance between providing access to on-line data and downloaded off-line data to satisfy all business users' operational reporting and historical analysis needs within a single environment. The IBM Cognos 8 BI for salesforce.com data adaptor is optimized for query performance, using specialized query algorithms.
- **A simplified business model:** IBM Cognos 8 BI enables business users to self-service by representing the salesforce.com data in terms the business understands. No coding is required with the auto-generation of Sforce Object Query Language (SOQL) calls to SObjects.
- **Reduced system impact:** With IBM Cognos 8 BI, IT can leverage table and file caching for on-line access to mitigate the impact of frequently requested queries. IT can also leverage incremental data capture to optimize the capture of snapshots for historical trend analysis.
- **Effective access control:** IBM Cognos security features provide one controlled access method for salesforce.com that leverages web services and the business logic of the salesforce.com environment.
- **Faster distribution:** Reports can be published in formats such as HTML, Excel, PDF, CSV, XML, and more. In addition, IBM Cognos 8 Go! access modes help you increase business intelligence user adoption rates within your organization by letting users interact with reports, analyses, and other BI content using familiar applications or devices, such as a BlackBerry enterprise search engine, Microsoft Office® applications, or Web browsers.

**salesforce.com Objects**

The following is a partial list of salesforce.com objects available through IBM Cognos 8 BI for salesforce.com:

<p><b>Accounts</b>  Account Details  All Accounts  My Accounts  New Last Week  New This Week</p> <p><b>Campaigns</b>  All Active Campaigns  Campaign Details  My Active Campaigns</p> <p><b>Cases</b>  All Closed Cases  All Open Cases  Case Details  International - Escalations  International - Platinum, Gold  International - Silver, Bronze  My Cases  My Open Cases  Partner Relations  US - Escalations  US - Platinum, Gold  US - Silver, Bronze</p>	<p><b>Contacts</b>  All Contacts  Birthdays This Month  Contact Details  My Contacts  New Last Week  New This Week</p> <p><b>Contracts</b>  All Activated Contracts  All Contracts  All Draft Contracts  All In Approval Contracts  Contract Details  My Activated Contracts  My Draft Contracts  My In Approval Contracts</p> <p><b>Leads</b>  All Open Leads  International Leads  Lead Details  My Unread Leads  Today's Leads  US Leads</p>	<p><b>Opportunities</b>  All Opportunities  Closing Next Month  Closing This Month  My Opportunities  New Last Week  New This Week  Opportunity Details  Private  Won</p> <p><b>Products</b>  All Products  Product Details</p> <p><b>Solutions</b>  All Reviewed Solutions  All Unreviewed Solutions</p>
--	---	---

IBM Cognos 8 BI provides an ideal way to provide access to salesforce.com data to all users and decision-makers. IBM Cognos 8 BI delivers a rich set of BI capabilities and enables business users to gain fresh perspectives by providing on-demand data together with captured snapshots for time-series analysis. IBM Cognos 8 BI's powerful capabilities will help salesforce.com customers gain a complete, consistent, and timely view of information across all the systems. With the right data from salesforce.com and the right BI platform, IT can enable the organization to make faster, more effective business decisions.

**Feature Overview**

IBM Cognos 8 Business Intelligence (BI) for salesforce.com :

- Provides access all salesforce.com CRM and custom applications built on the AppExchange platform
- Leverages salesforce.com-approved interfaces and Web interfaces with no need for request modifications
- Uses a single, modern Web services architecture that requires no desktop installs, plug-ins, or applets
- Requires no coding, eliminating the need for expensive, specialized resources

- Has the same technology for BI query and extraction of salesforce.com and non-salesforce.com data
- Contains a data adaptor optimized for query performance
- Auto-generates Sforce Object Query Language (SOQL) calls to SObjects
- Features security that provides controlled access that leverages web services and the business logic of the salesforce.com environment
- Ability to publish in several formats
- Access modes that let users interact with reports, analyses, and other BI content using familiar applications or devices

**About IBM Cognos BI and Performance Management:**

IBM Cognos business intelligence (BI) and performance management solutions deliver world-leading enterprise planning, consolidation and BI software, support and services to help companies plan, understand and manage financial and operational performance. IBM Cognos solutions bring together technology, analytical applications, best practices, and a broad network of partners to give customers an open, adaptive and complete performance solution. Over 23,000 customers in more than 135 countries around the world choose IBM Cognos solutions.

For further information or to reach a representative: [ibm.com/cognos](http://ibm.com/cognos)

**Request a call**

To request a call or to ask a question, go to [ibm.com/cognos/contactus](http://ibm.com/cognos/contactus). An IBM Cognos representative will respond to your enquiry within two business days.



© Copyright IBM Corporation 2009

IBM Canada Ltd.  
3755 Riverside Drive  
Ottawa, ON, Canada K1G 4K9

Produced in Canada  
March 2009  
All Rights Reserved.

IBM and the IBM logo are trademarks of International Business Machines Corporation in the United States, other countries or both. For a complete list of IBM trademarks, see [ibm.com/legal/copytrade.shtml](http://ibm.com/legal/copytrade.shtml).

Adobe, the Adobe logo, PostScript, and the PostScript logo are either registered trademarks or trademarks of Adobe Systems Incorporated in the United States, and/or other countries.

Microsoft, Windows, Windows NT, and the Windows logo are trademarks of Microsoft Corporation in the United States, other countries, or both.

Other company, product and service names may be trademarks or service marks of others.

References in this publication to IBM products or services do not imply that IBM intends to make them available in all countries in which IBM operates.

Any reference in this information to non-IBM Web sites are provided for convenience only and do not in any manner serve as an endorsement of those Web sites. The materials at those Web sites are not part of the materials for this IBM product and use of those Web sites is at your own risk. P22393