



Seminar IBM Cognos 8v4

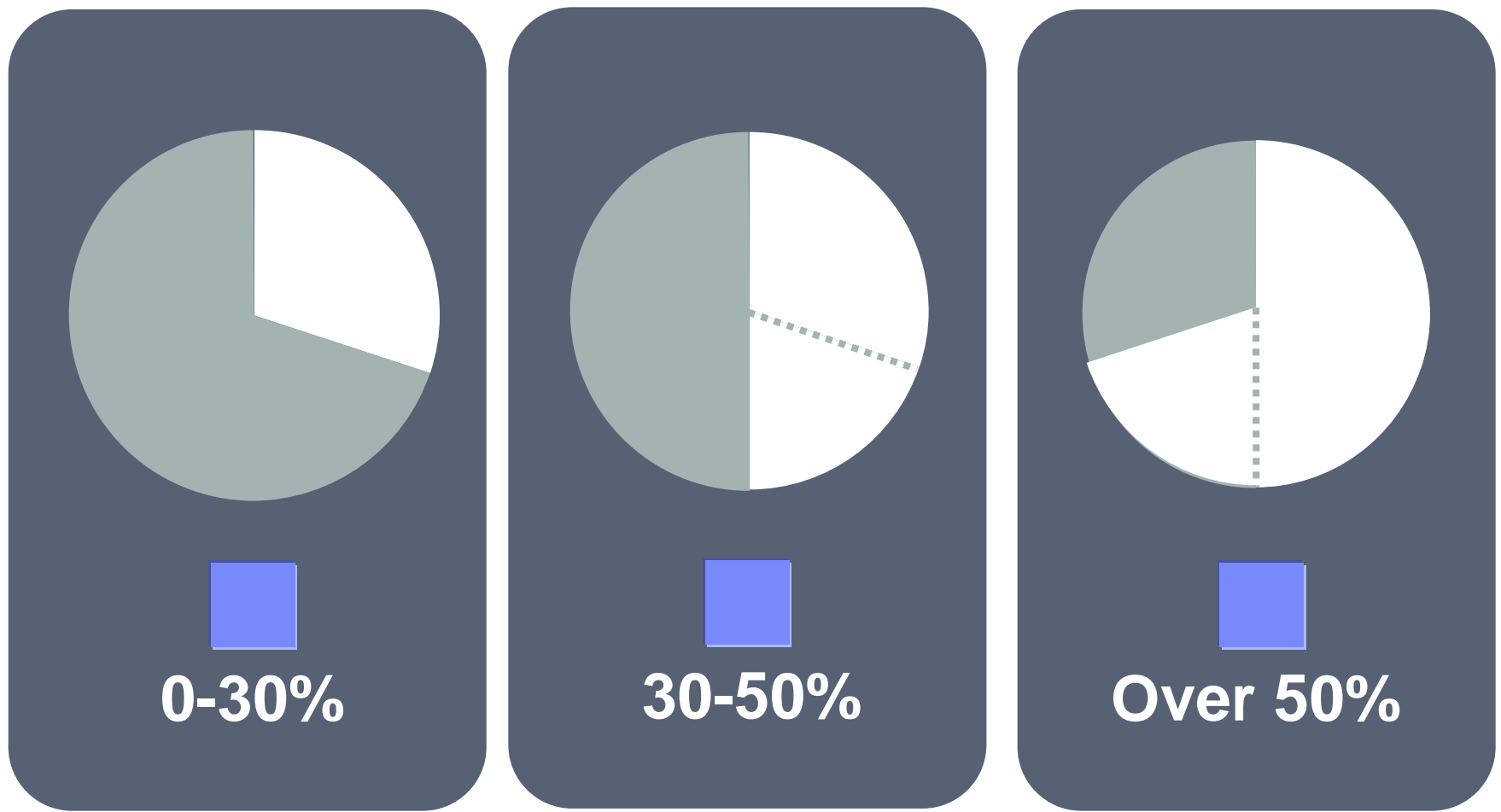
Daphne Reurslag
Robin van Tilburg

Cognos.
software

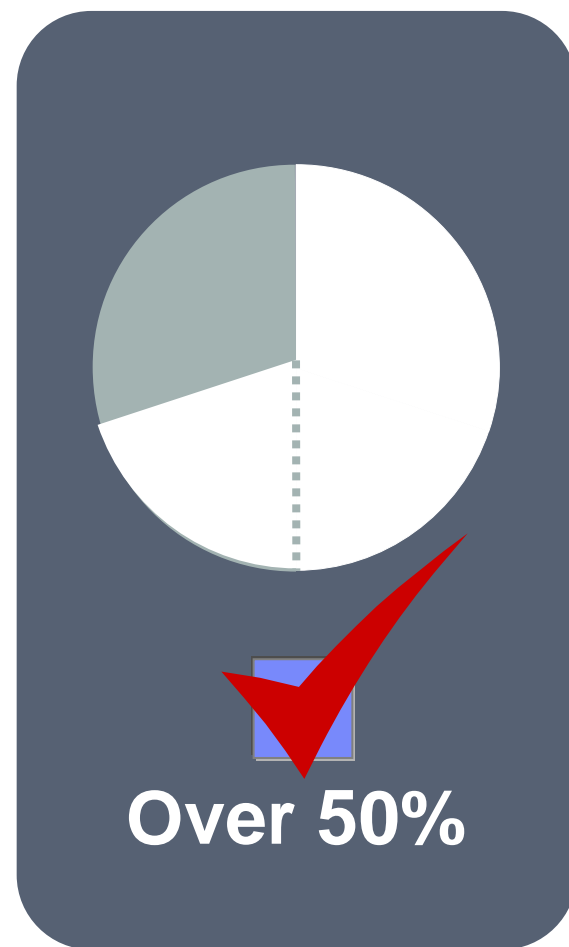
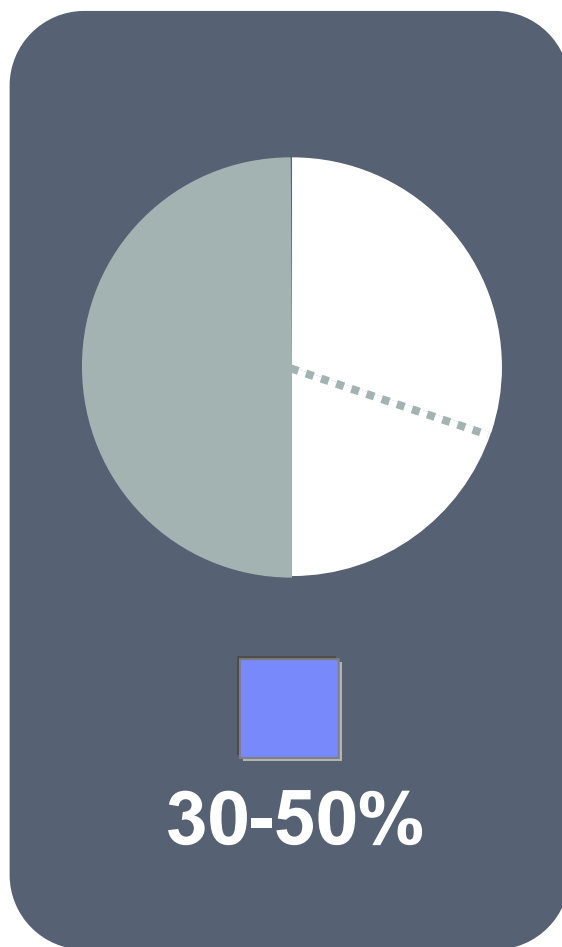
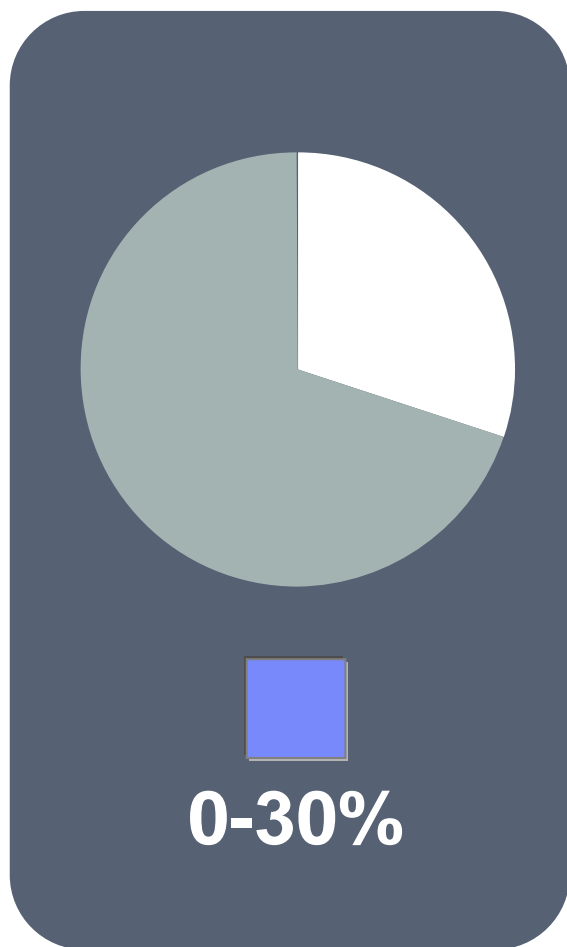


Is BI/ Performance management passé?

Amount of information managers (decision makers) receive that has no value



Amount of information managers receive that has no value



How much time do managers waste each day, searching for information?



0-30 min



1-3 Hours



Over 3 Hours

Time managers waste each day searching for information



0-30 min

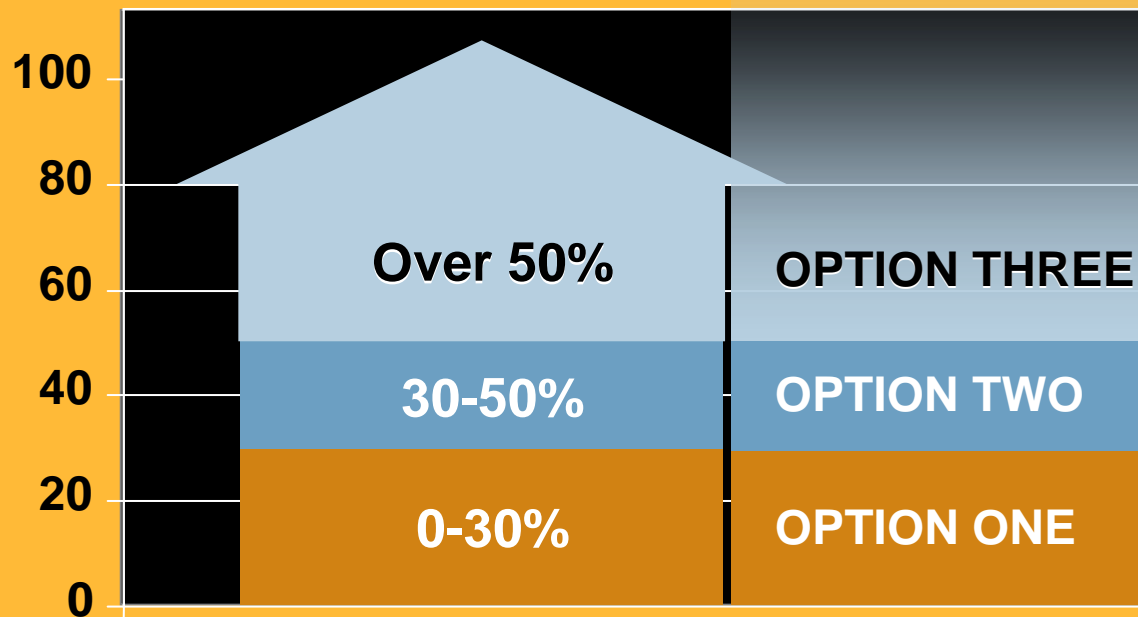


1-3 Hours

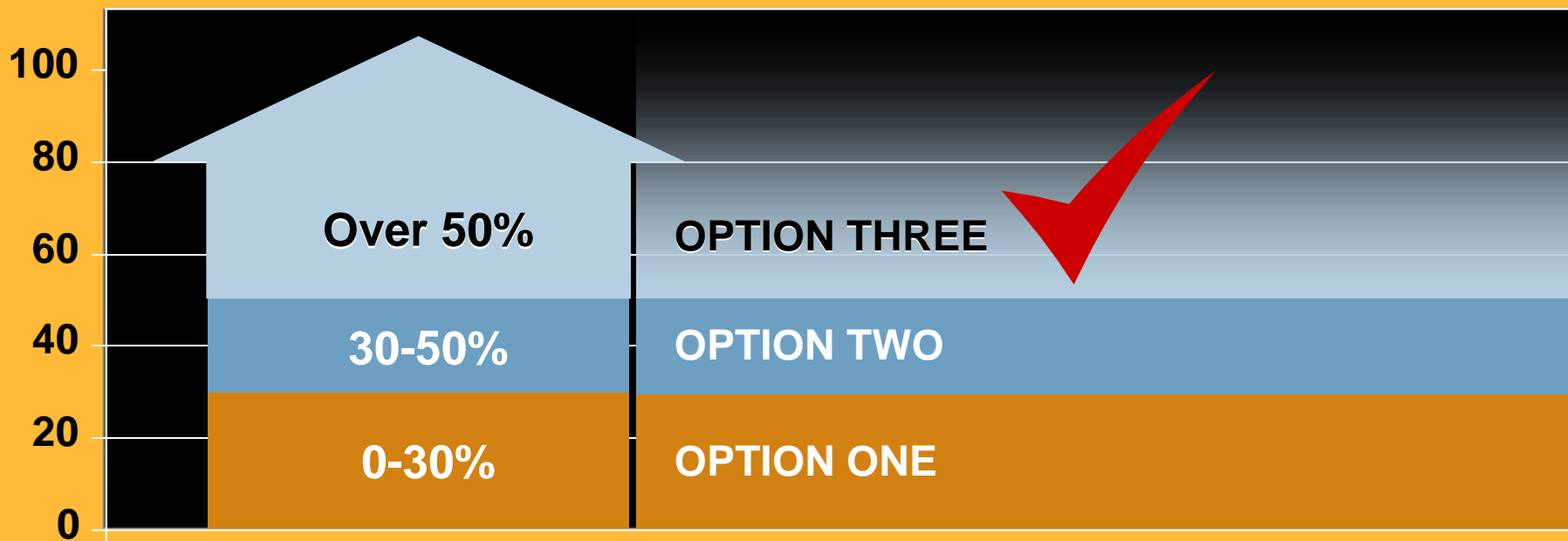


Over 3 Hours

What percentage of managers accidentally use the wrong information at least once a week?



Percentage of managers accidentally use the wrong information at least once a week



Wat levert Performance Management nu op?

Hoe breng je dat in de kaart?

Hoe zet je dat op de kaart?



Hackett insights are based on work with 2,700 of the world's leading companies

97%
of the Dow Jones Industrials

73%
of the Fortune 100

88%
of the Dow Jones Global Titans

73%
of the DAX 30

45%
of the FTSE 100



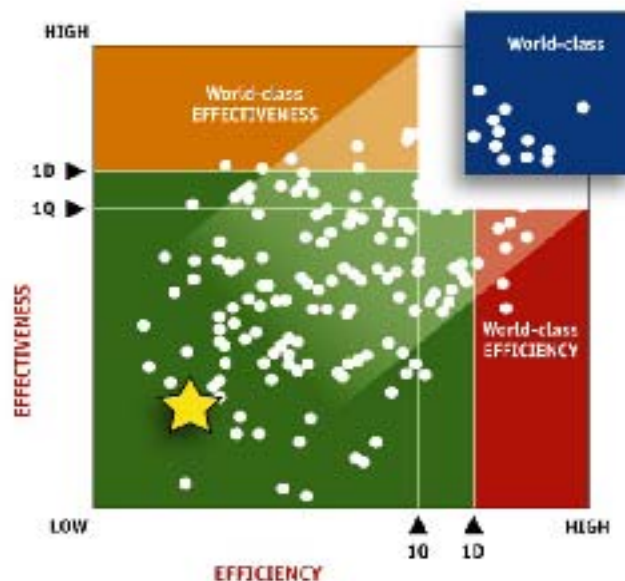
Cognos
software

Hackett Value Grid™ – the foundation for how Hackett defines world-class performance

Hackett Value Grid™ (Finance Example)

EFFECTIVENESS

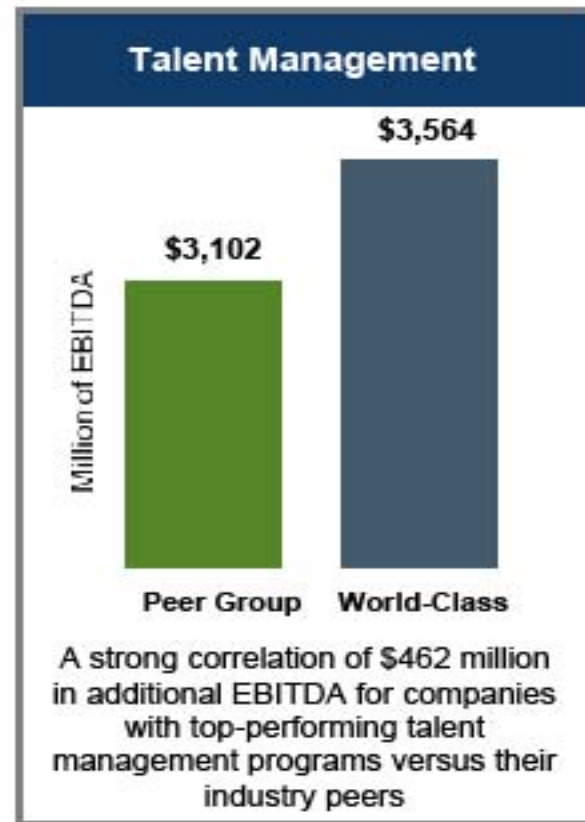
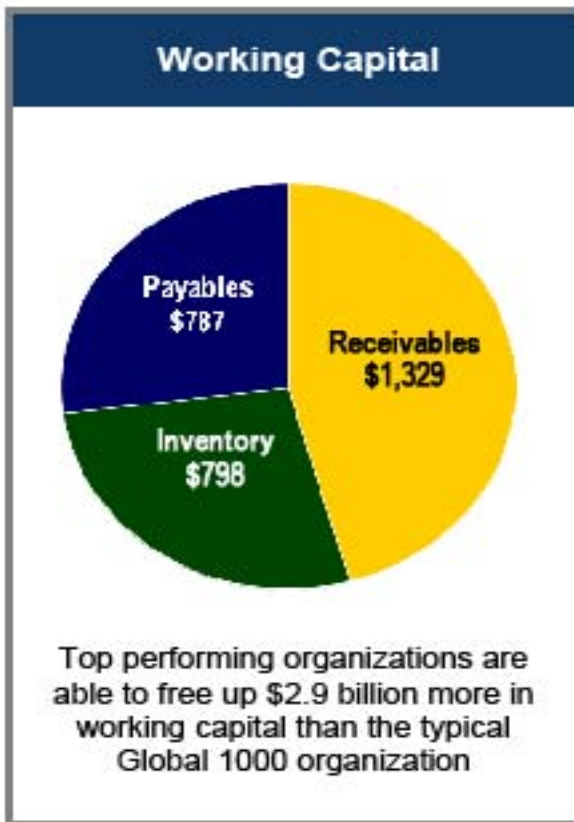
- Days sales outstanding
- Days payables outstanding
- Accounts payable rework rate
- Customer billing rework rate
- Accuracy of forecasts and analysis
- Functional role in strategic decision making
- Percent of time analytic focus in on proactive decision making
- Percent of time spent collecting and compiling data for analysis
- Percent of analysts with acumen to function as business partners



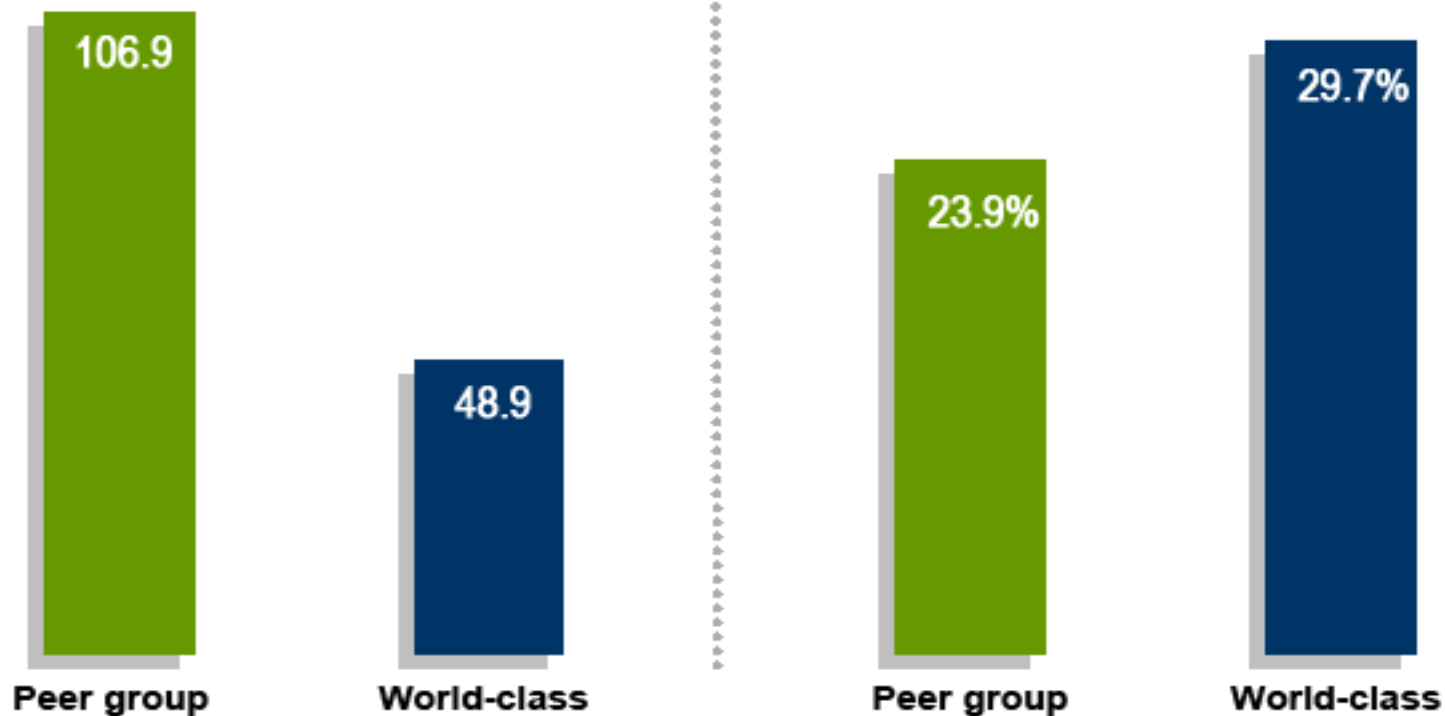
EFFICIENCY

- Overall function cost as a % of revenue
- Process cost as a % of revenue
- Technology cost per function FTE
- Staffing levels by process
- Cycle times and iterations
- Unit cost of transactions
- Utilization of self-service for inquiry
- Application complexity
- Automation of transactions
- Reliance on spreadsheets
- Percent of business reports distributed electronically

World-class EPM organizations ← → peers



World-class companies meet their finance requirements with a focused, smaller staff – while investing more of each dollar in planning



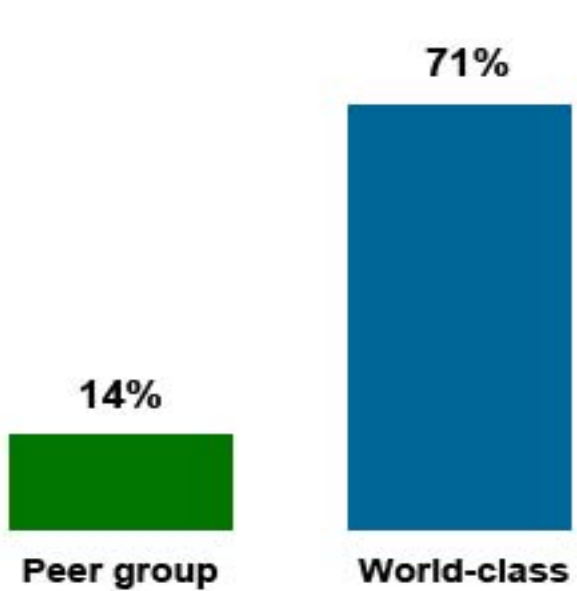
FTEs per Billion \$ of Revenue

Planning and Analysis as a
% of Overall FTEs

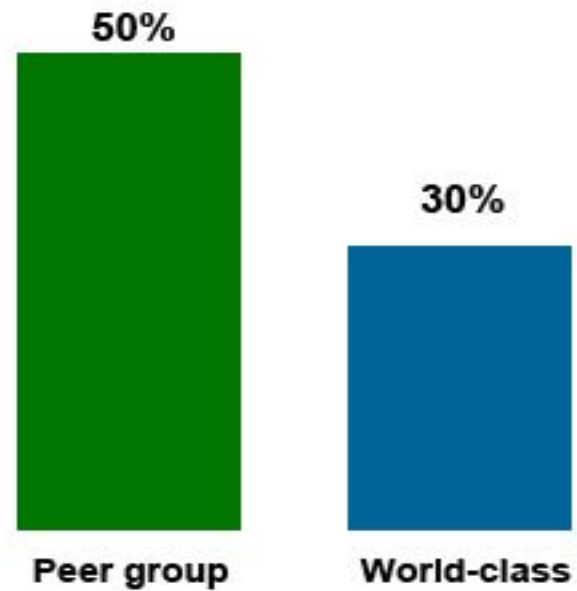
Cognos.
software



Common data definitions and a single source of truth allow world-class finance organizations to be more efficient in business analysis



Percent of cost center managers or their staff who enter their budgets into an online budgeting application, 2007

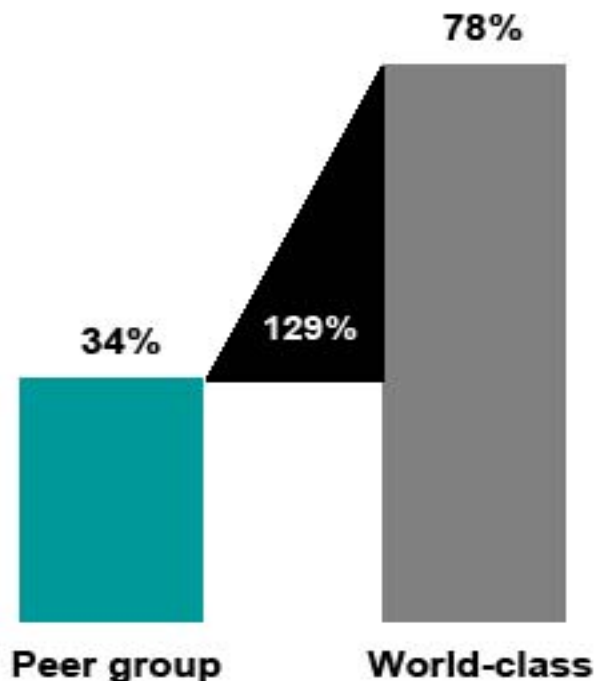


Percent of analyst time spent collecting/compiling vs. analyzing data, 2007

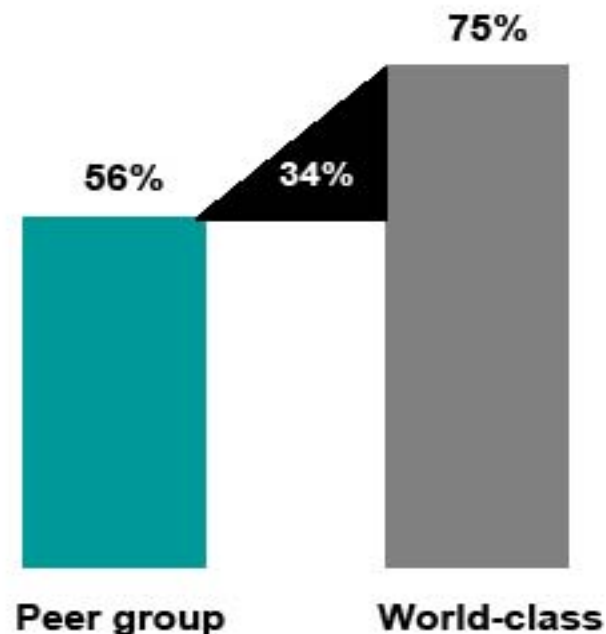




And they have given open access to reports for their managers

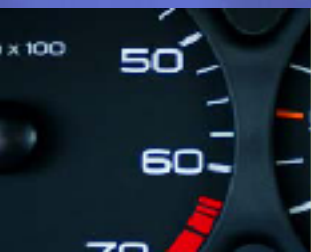


Percent of operations managers with online access to finance reports

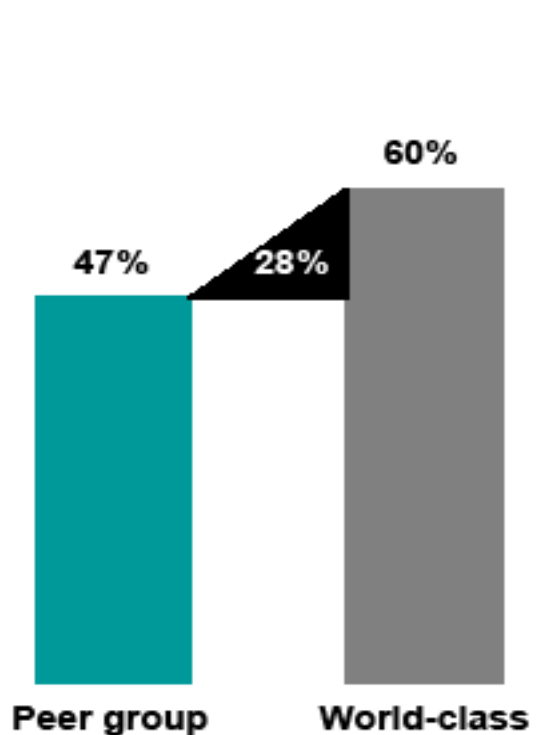


Percent of standard reports distributed electronically

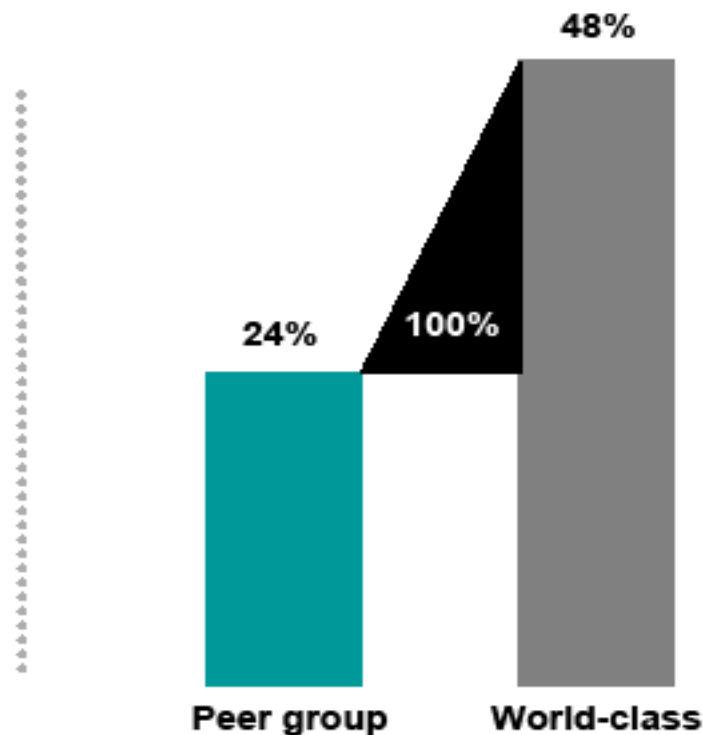




Which has been enabled by use of common analytic systems and measures that allow management to focus on decision making versus debating multiple versions of the truth



Percent of companies that have management reports generated from a centralized data repository



Percent of companies utilizing mature balanced scorecards with both operational and financial measures



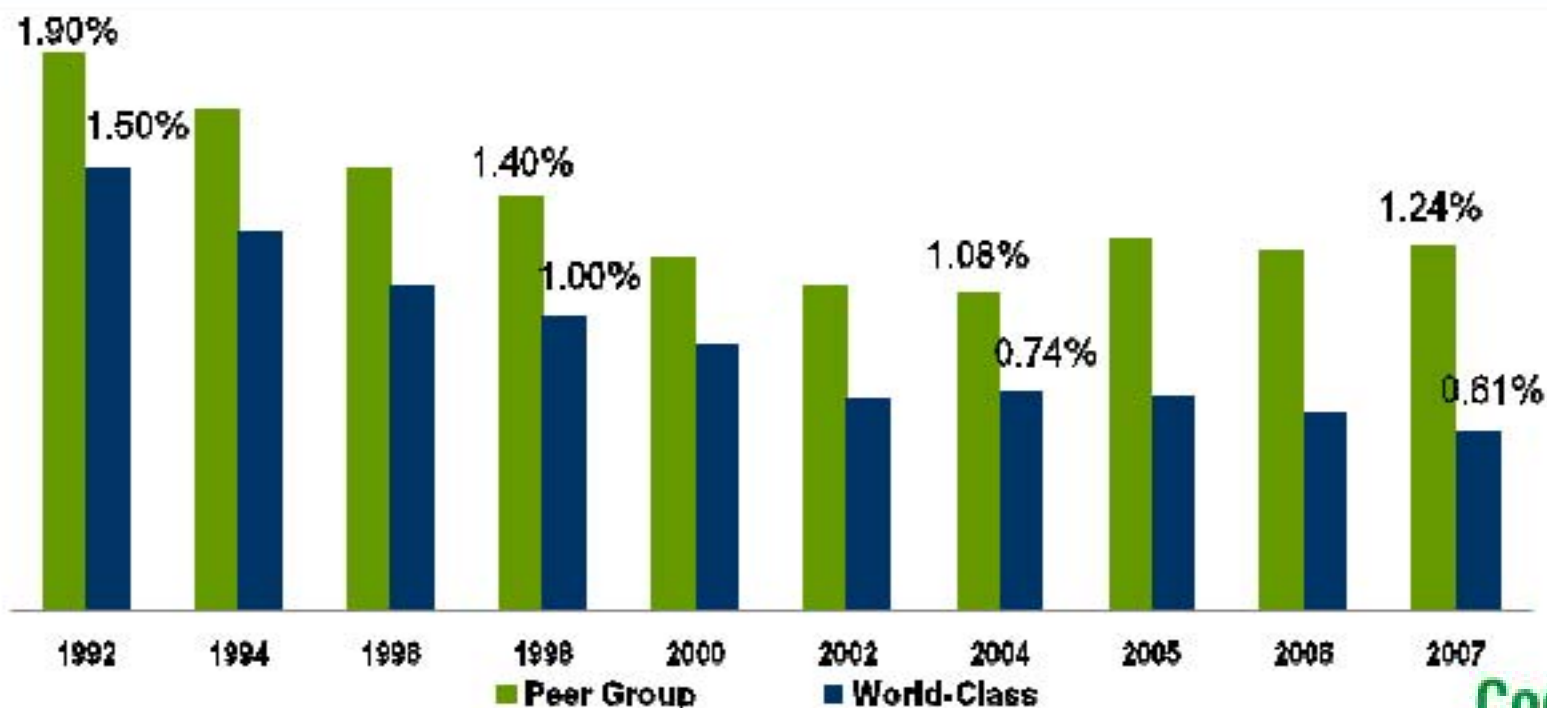
Within Finance, world-class organizations continue to differentiate themselves from the peer group


Finance cost as a percent of revenue

- ERP implementation
- Beginnings of shared services
- Shift from mainframe to client server

- Refinement of shared services
- Advent of web and self service
- Data warehousing increasing
- Maturing shared services

- Globalization
- Increasing focus on planning and analysis
- Sarbanes-Oxley





For a typical organization, The Hackett Group finds that there are significant opportunities for improvement in both effectiveness and efficiency

- Spreadsheets continue to be the 'normal' reporting and budgeting application in use at most organizations
 - At peer organizations, 79% of management reports are created in spreadsheets as the primary application
 - For that same group, 67% of the time a spreadsheet is the primary budgeting application
- This lack of an integrated environment, costs organizations in both effectiveness and efficiency
 - The majority of companies continue to fail in their efforts to provide accurate forecasts
 - Typical finance organizations spend over 50% more in planning and performance management and over 80% more in business analysis than world-class finance organizations
- Recent Hackett research clearly identifies the value of an integrated environment at both the ERP and Analytic level

Hoe kijkt IBM naar Business Analytics & Optimization?

New complexity creates an imperative for change



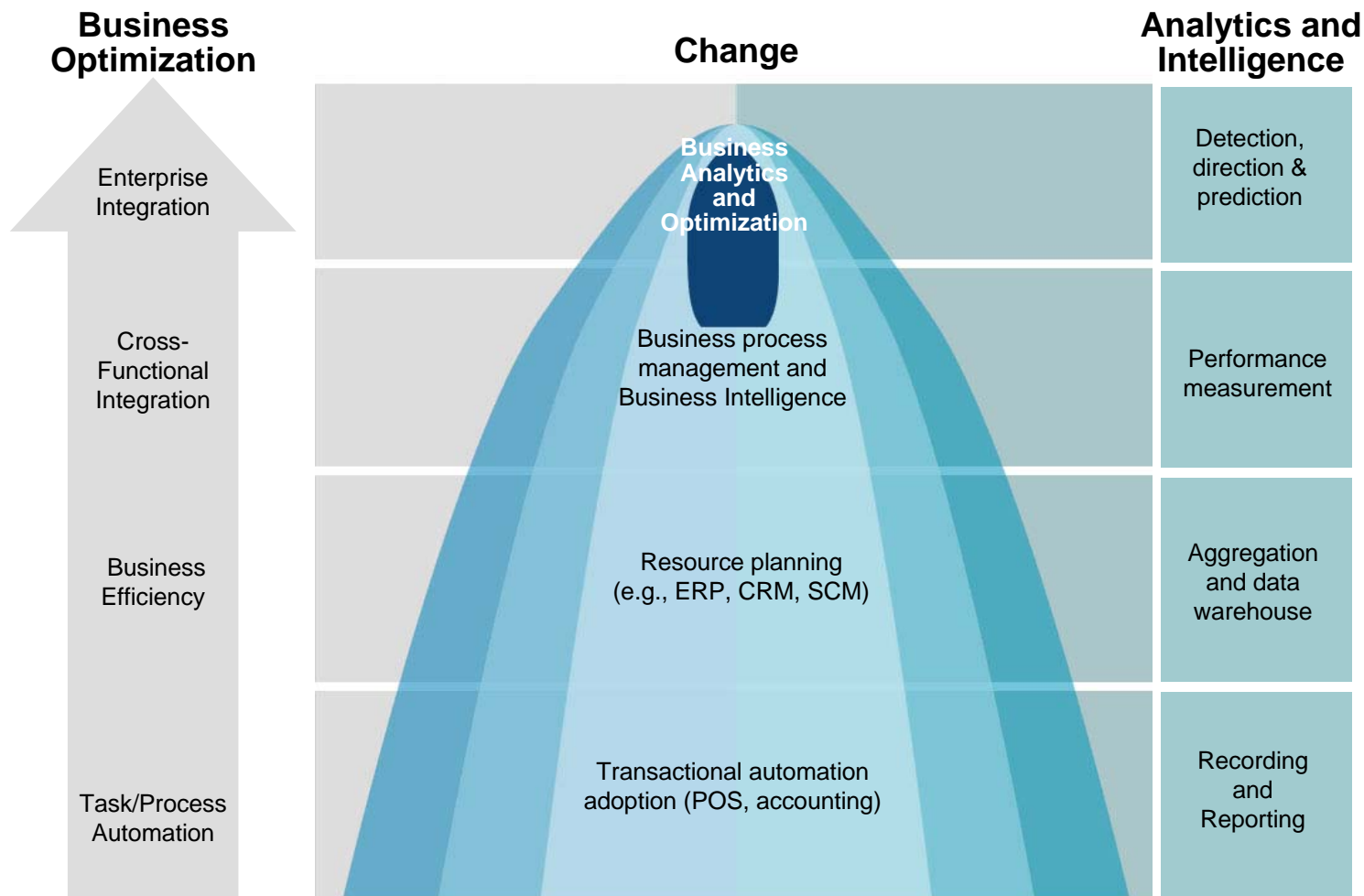
The growing velocity of the volume, variety and granularity of information is driving unprecedented complexity.

Enterprises must fundamentally change the way they work



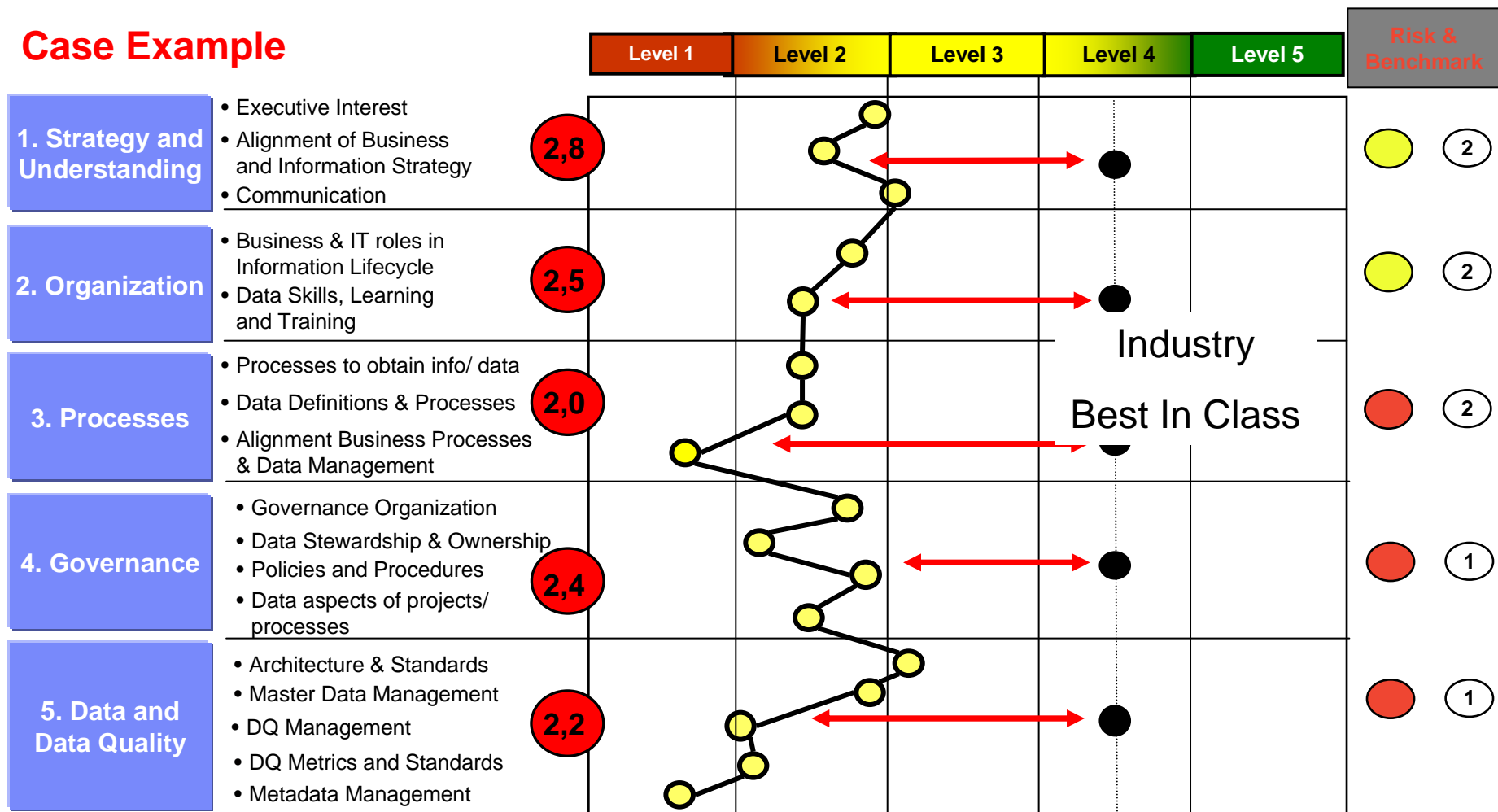
Intelligent enterprises leverage information to reach better, faster decisions, optimal actions, and more **predictable** outcomes.

Business Analytics and Optimization is the next bow wave of change where operational execution meets new opportunity



Business Analytics and Optimization Jumpstart Solution

Case Example



Business Risk ● Lo ● Medium ● High

Benchmark 1 Significantly Below Competition 3 Same as Competition 5 Significantly Above Competition

Outcome based on surveys and interviews

Cognos Application Healthcheck Solution

CUSTOMER faces challenges in leveraging Cognos to its fullest potential and struggles to use information more effectively. You need to determine what opportunities exist to optimize and/or enhance your existing Cognos install base.

Our Understanding of Your Goals

The challenges you face today:

- Limited ability to get the right information for consumption by executives or field personnel
- Ineffective use of current Cognos reports (too many, very departmentalized and silo'd)
- Inaccurate reporting due to silo'd data
- Limited adoption and use across the entire organization
- Slow response times from reports and dashboards

Our Approach to Meeting Your Goals

This offering can help you:

- Achieve an integrated view of data
- Enhance reliability of customer data and help focus on the right factors
- Create meaningful reports quickly and efficiently

The benefits include:

- Prioritized opportunities based on business impact--focusing primarily on quick wins
- Rationalization of clients goals against current deployment status and existing roadmap
- A clear roadmap of how to best utilize the full potential of Cognos complete with costs and estimated benefits
- Rationalization of current install base and appropriate use of the licenses currently owned by the client
- Analysis and recommendations on improvements to data quality

Cognos 8.4 ***BI to You***

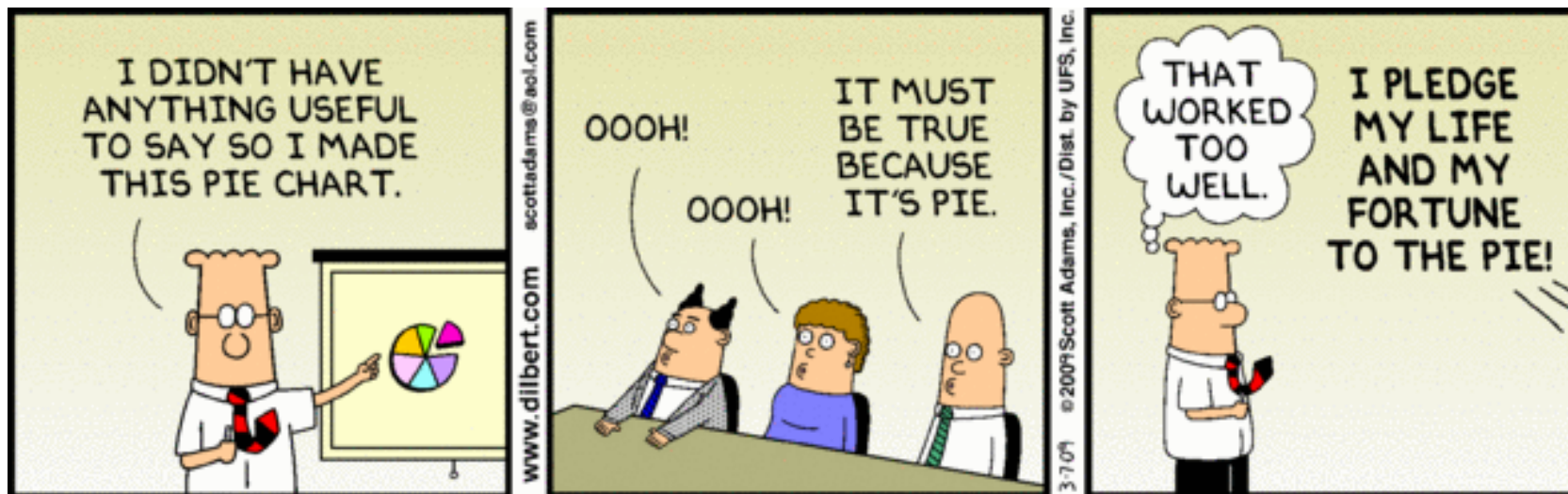
Robin van Tilburg

Solution Architect Cognos

Cognos.
software

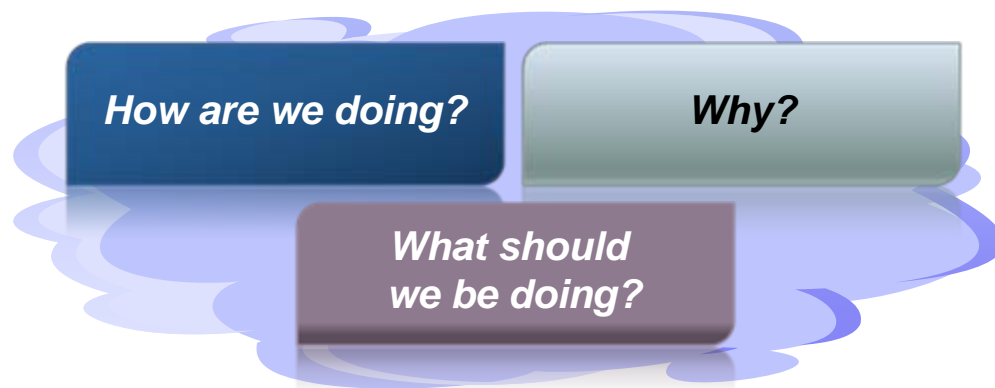


Business Intelligence??



BI is supportive. Not an objective...

Three Questions that Drive Performance



Sales & Operations Performance - IBM Cognos Connection

IBM Cognos Connection Sales & Operations [Log Off](#)

Public Folders | My Folders | **Sales & Operations Performance** | Inventory Management

No filter | No grouping

	Name
■ ▼	On Time Customer Shipments →
◆ -	Forecast Accuracy - Operations →
◆ -	Inventory Obsolescence as a % of Total Inventory - Operations
◆ ▼	Unplanned Maintenance Downtime - Operations →
● -	Production Compliance - Operations →
● ▲	Committed Delivery Performance - Operations →

CAPACITY EXCEPTIONS

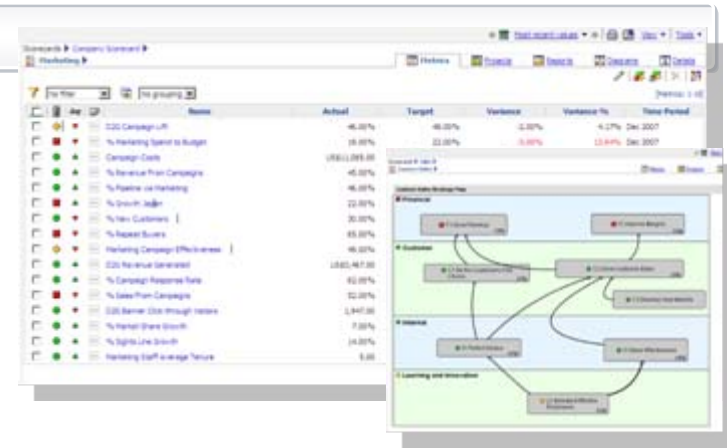


Scorecard or dashboard shows On Time Shipments below plan

Scorecards and Dashboards: Measuring and Monitoring to See “How” You’re Doing

Scorecards

- Instant measurement relative to targets/benchmarks
- Aligns decisions and tactics with strategic initiatives
- Supports scorecarding methodologies
- Ensures ownership and accountability
- Extensive portlet support to broaden access



Dashboards

- Full range of dashboard styles, including personalized, self-assembly views with Flash graphics
- Provides at-a-glance, high-impact views of complex information
- Highly visual and intuitive
- Helps focus on issues that need attention/action
- Combines information across disparate sources

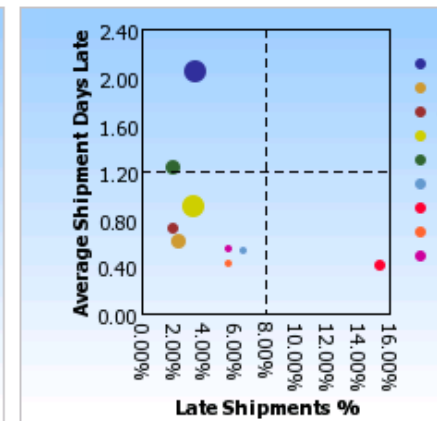
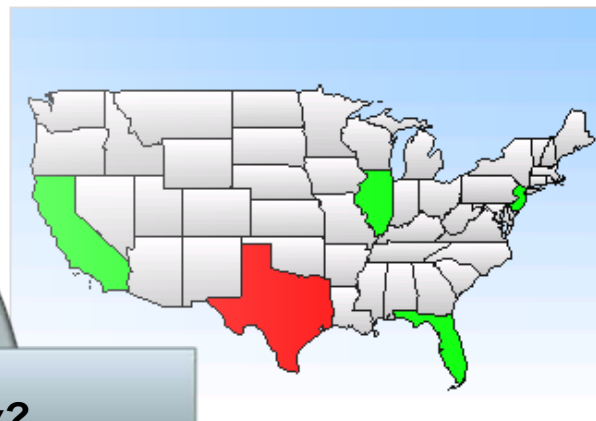


How are we doing?

Plant Production



Why?



Plant	Comp. Name	Mat Req'd	Tot Mat. Ordered	Mat. Shortage Desc.
Houston, TX	Circuit Boards	22,825,208	43,074,732	
Jacksonville, FL	Computer Cases	12,783,836	40,521,303	
Master Planning	Electrical Connectors	89,655,906	199,800,000	
Milwaukee, WI	Instrument Wiring	26,545,818	38,662,633	
Newark, NJ	Instrument Wiring	1,065,832	888,867	Yes
Santa Cruz, CA	LCD Monitors	0	41,544,732	

Report shows production bottleneck due to Material Shortage



Query, Reporting: Understanding the “Why” of Business Performance

Ad-hoc Query

- Intuitive, self-service reporting
- Access to all data; drag and drop query creation
- Easy sorting and filtering
- Corporate templates for consistency
- Share ad-hoc or promote for professional distribution



Reporting

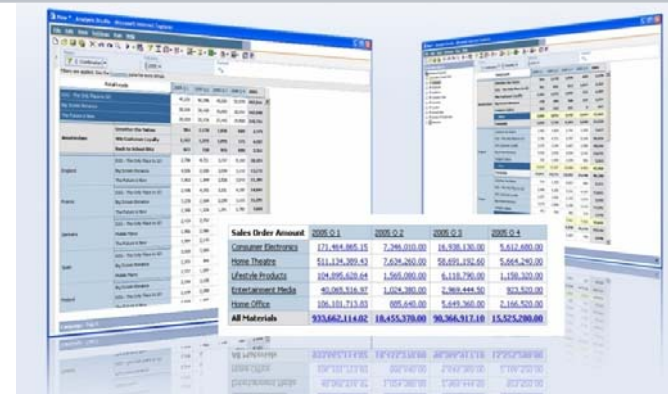
- Provides full breadth of report types (personalized, transactional, management, statutory, production...)
- Author once, consume anywhere
- Ability to leverage all data; consistent information
- No re-authoring; ability to re-use queries, analyses, express-authored reports
- Easy access to data lineage, glossary, annotations



Analysis: Understanding the “Why” of Business Performance

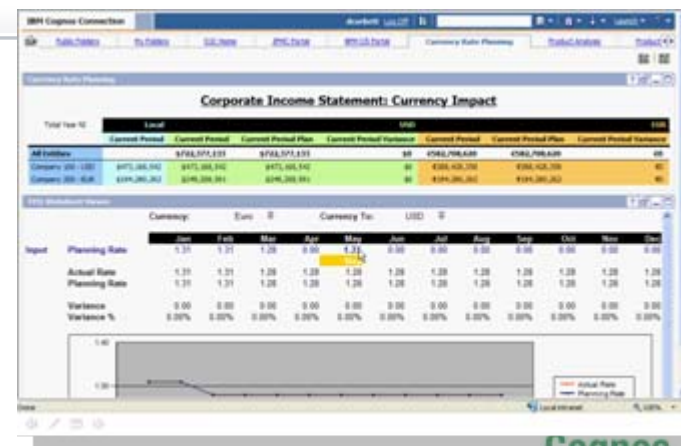
Exploration and Analysis

- Compare and contrast to reveal symptoms and causes behind trends (e.g. sales trend analysis)
- Flexible analysis using Web or Excel interfaces
- Personal exploration across multiple dimensions
- Summary level to detail with ease
- Ability to work disconnected



‘What-if’ Scenario Modeling

- Model and compare scenarios (e.g. financial or profitability analysis)
- Flexible analysis using Web or Excel interfaces
- Reorganize, reshape information with write-back
- Tight integration of Cognos TM1 with Cognos 8



How are we doing?

Why?

ing - Cognos Planning - Contributor

Global Assumptions | Demand Volume | Base Regional Breakdown | **Plant Production** | Contractor Volume Constraints | Contractor

Master Planning | Strategic Accounts | Game Console

	Jan-07	Feb-07	Mar-07	Apr-07	May-07	Jun-07	Jul-07	Aug-07
All Plants	5,375	5,745	5,145	5,145	6,197	7,016	7,956	
Moline, IL	20.00%	20.00%	20.00%	20.00%	20.00%	20.00%	20.00%	
Newark, NJ	20.00%	20.00%	20.00%	20.00%	20.00%	20.00%	20.00%	
Santa Cruz, CA	20.00%	20.00%	20.00%	20.00%	20.00%	20.00%	20.00%	
Houston, TX	20.00%	20.00%	20.00%	20.00%	20.00%	20.00%	20.00%	
Jacksonville, FL	20.00%	20.00%	20.00%	20.00%	20.00%	20.00%	20.00%	
Contractor	0.00%	0.00%	0.00%	0.00%	0.00%	0.00%	0.00%	
All Plants	100.00%	100.00%	100.00%	100.00%	100.00%	100.00%	100.00%	100.00%
Moline, IL	0.00%	0.00%	0.00%	0.00%	0.00%	0.00%	0.00%	
Newark, NJ	0.00%	0.00%	0.00%	0.00%	0.00%	0.00%	0.00%	
Santa Cruz, CA	0.00%	0.00%	0.00%	0.00%	0.00%	0.00%	0.00%	
Houston, TX	0.00%	0.00%	0.00%	0.00%	0.00%	0.00%	0.00%	
Jacksonville, FL	0.00%	0.00%	0.00%	0.00%	0.00%	0.00%	0.00%	
Contractor	0.00%	0.00%	0.00%	0.00%	0.00%	0.00%	0.00%	
All Plants	0.00%	0.00%	0.00%	0.00%	0.00%	0.00%	0.00%	0.00%
Moline, IL	20.00%	20.00%	20.00%	20.00%	20.00%	20.00%	20.00%	
Newark, NJ	20.00%	20.00%	20.00%	20.00%	20.00%	20.00%	20.00%	
Santa Cruz, CA	20.00%	20.00%	20.00%	20.00%	20.00%	20.00%	20.00%	
Houston, TX	20.00%	20.00%	20.00%	20.00%	20.00%	20.00%	20.00%	
Jacksonville, FL	20.00%	20.00%	20.00%	20.00%	20.00%	20.00%	20.00%	
Contractor	0.00%	0.00%	20.00%	20.00%	20.00%	20.00%	20.00%	
All Plants	100.00%	100.00%	100.00%	100.00%	100.00%	100.00%	100.00%	100.00%
Contractor								
Moline, IL	1,075	1,140	1,029	1,029	1,239	1,403	1,591	
Newark, NJ	1,075	1,140	1,029	1,029	1,239	1,403	1,591	
Santa Cruz, CA	1,075	1,140	1,029	1,029	1,239	1,403	1,591	

What should we be doing?

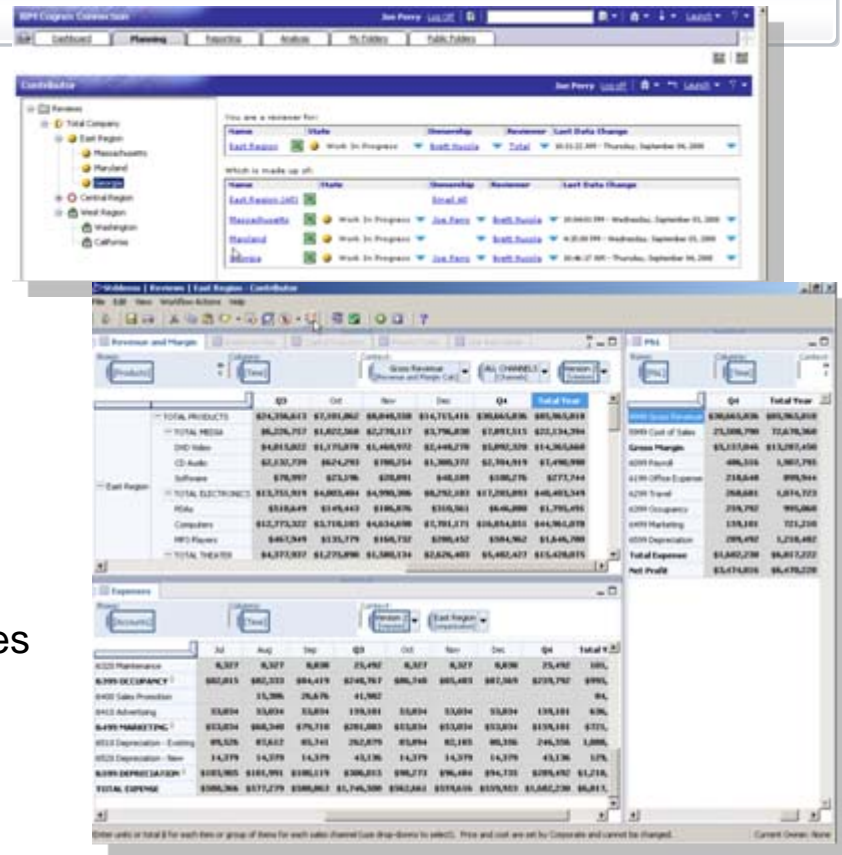


Demand Volume is reviewed and Plant Production Plan is adjusted to remove bottleneck

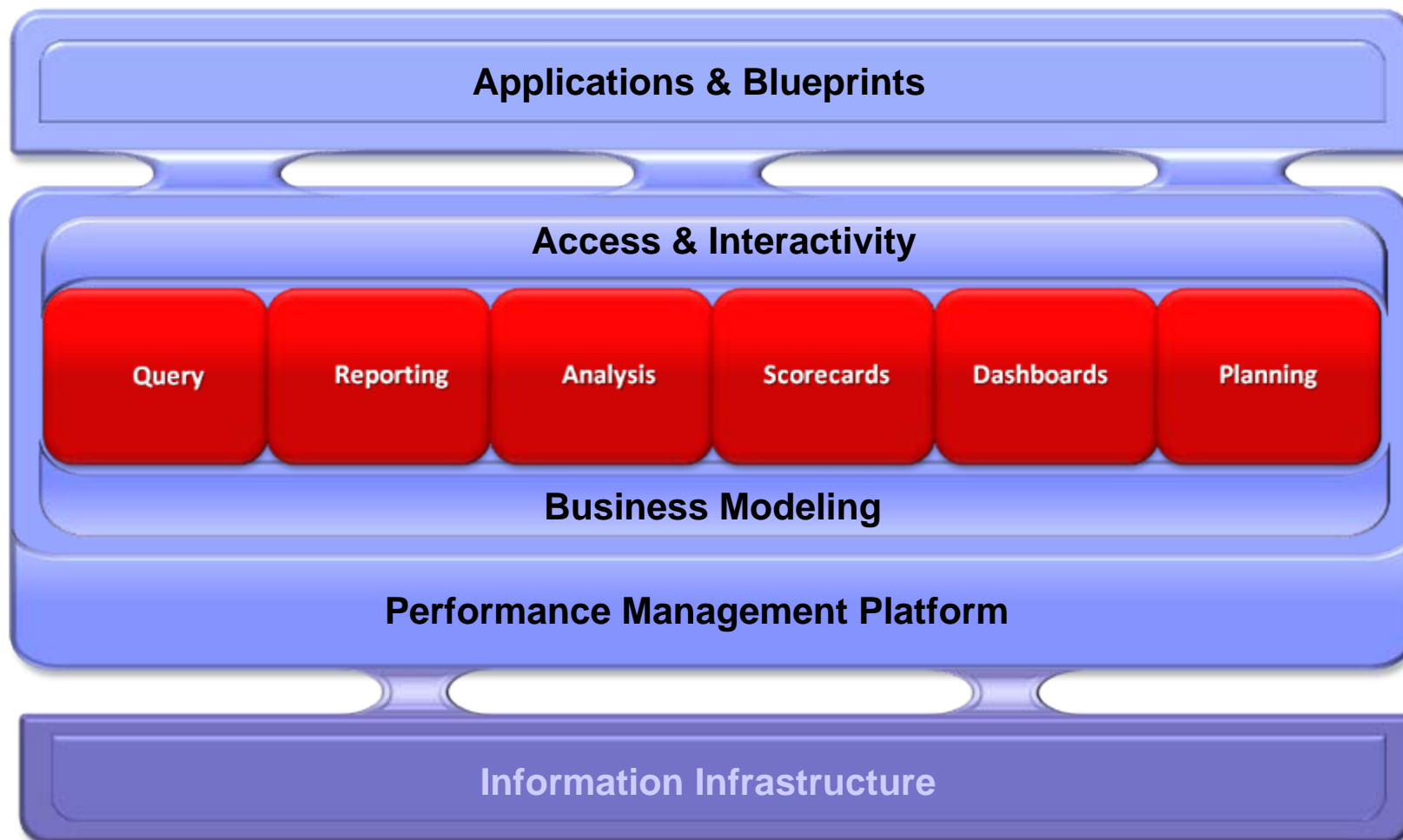
Planning, Budgeting and Forecasting: Determining What you “Should be Doing”

Enterprise Planning

- Replaces spreadsheet based, manual budgeting and planning
- Connects operations and finance
- Engages the whole organization to make better informed decisions
- Replaces rigid, annual budgeting with continuous planning for higher responsiveness
- Supports best practices (e.g. driver based planning, rolling forecasts)
- Offers packaged best practice Blueprints for processes inside and outside of Finance across industries
- Rich client for improved user experience and personalization, and simplified deployment

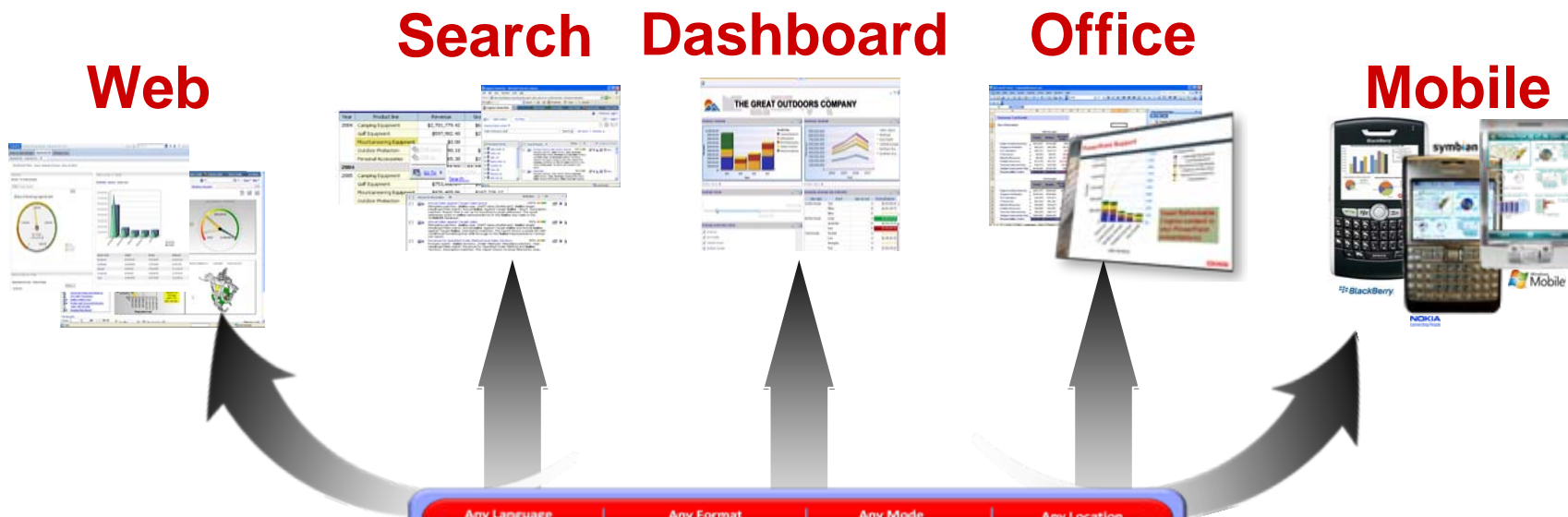


IBM Cognos Performance Management System – Universal Capabilities



Extend Your BI !!

Make Decision-Making Part of Everyday Life



Any Language		Any Format		Any Mode		Any Location	
Query	Reporting	Analysis	Scorecards	Dashboards	Planning		
Manage Dimensions		Build Datasets		Define Metrics		Capture Context	
Access & Optimize Information		Organize & Capture Content		Deploy & Manage Applications		Architect & Integrate Solutions	



Cognos.
software

Cognos.
software



On Business Terms To IT and Finance Standards



Empowers business users without compromising IT's high standards for conformance, compliance and cost effective scalability, while driving Performance Management process excellence and better business outcomes for the organization.

Addressing the Needs of Business



Informed

Provides more trusted information with the additional context to add perspective to the information.



Engaged

Invites business users with more a dynamic & interactive business intelligence experience.



Aligned

Improves alignment between strategy & operations with complete visibility from business operations to advanced analytics & strategic plans

Better Informed

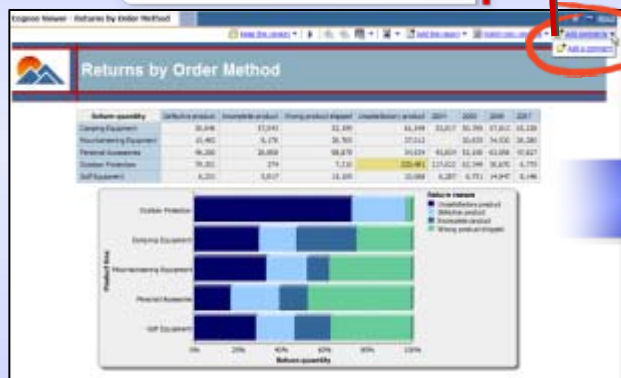
- More timely, accurate and relevant information, for more confident, faster decisions and collaboration
 - Annotations
 - New chart types and formatting
 - Location-awareness on mobile devices
 - Data lineage
 - Integration with InfoSphere business glossary



Annotations



Initiate annotation
while viewing report



Add a Comment - Microsoft Internet Explorer

Add a Comment

Specify the name and contents of the comment.

Name:
Outdoor Product Quality

Comment:
Investigation started to understand large spike in returns for Outdoor protection line. Update within 7 days.

Cancel Finish

Name: Outdoor Product Quality
Comment: Investigation started to understand large spike in returns for Outdoor protection line. Update within 7 days.
Modification Time: 12 September 2008 22:58:08
Owner: Anonymous

[View](#)
[Modify...](#)
[Delete](#)

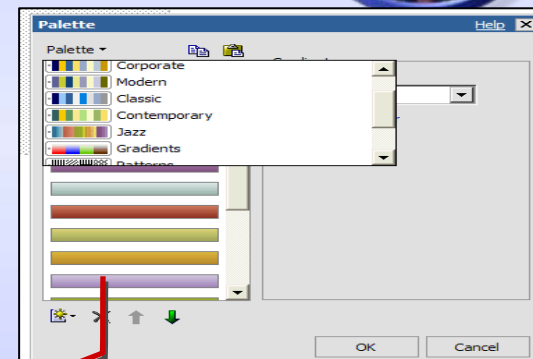
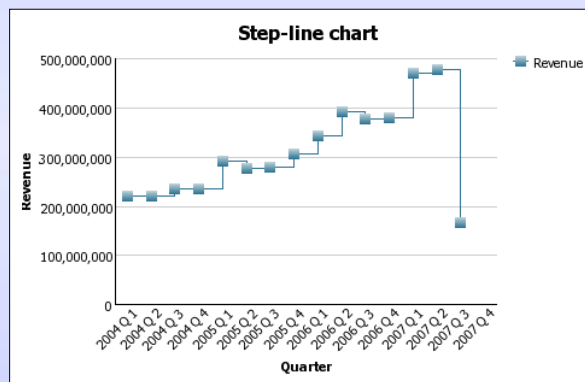
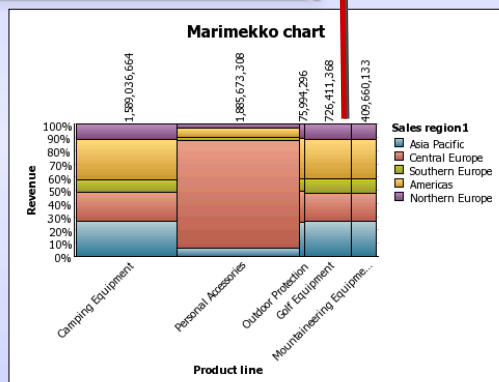
Annotations travel with the report and others can make additional comments

- Add or edit thoughts, decision and actions
- Share comments across colleagues
- Create history of associated insight



New Chart Types and Formatting

Powerful new color palettes and control



New color palettes to match industry standards

- More visually appealing and interesting reports
 - New and improved charts types available (Merimeko, Stepline etc)
 - Background design and color flexibility (ie Excel palette)

Go! Mobile Enhancements

Support for all prompts on the mobile device



Multi-select

Containing

Select from the following 278 items:

- Agenda 2.0
- Alabama Operations
- Alaska Operations

Selected 278 items:

- Agenda 2.0
- Agenda 2.0
- Agenda 2.0

Fully integrated with IBM Cognos 8 Scheduler ...

Workset - Manufacturing Data - Report View of SingleSheet...

ORDERDETAILCODE

ORDERDETAILCODE (start)

ORDERDETAILCODE (end)

PRODUCTNUMBER

PRODUCTNUMBER (start)

PRODUCTNUMBER (end)

PRODUCTTYPE

PRODUCTTYPECODE

Delivery:

Select at least one delivery method

Save:

Save the report

Save the report as a report view [Edit the options...](#)

⇒ Report View of Order Invoices - Donald Chow, Sales Person

Print the report

Printer locations:

[Select a printer...](#)

Send a link to the report by email [Edit the options...](#)

0 recipients

Send the report to mobile recipients [Select the reports...](#)

...including the ability to burst reports to multiple mobile users.

- Location aware content
- Enhanced prompt support
- Integrated scheduling – including bursted reports



Data Lineage

Select objects of interest from report view or package

Year	Product	Order Method	Quantity Sold	Discount Amount	%Discount
2005	Husky Rope 50	Fax	140	588.9333333	0.1667327
		Telephone	1,140	4,847.4	1.0673801
		Mail	330	1,456.95	0.3499802
		E-mail	512	1,064.6582353	0.2335183
		Web	536	3,132.49684211	0.7335183
		Sales visit	972	3,468.27272727	0.7778438
		Special	24	181.92	0.0560027

Access Metadata Workbench directly from Cognos reports

PRODUCT_LINE_EN	ORDER_METHOD	Quantity Sold
Camping Equipment	E-mail	27,583
	Fax	357.15
	Mail	201.42
	Sales visit	373
	Special	722
	Telephone	562.32
	Web	722.51
	Total	586,799.05
	E-mail	22,680.1
	Fax	7,259.
	Mail	5,953.6
	Sales visit	18,792.7
	Special	2,311.6
	Telephone	37.04
	Web	258,144.0
	Total	352,193.64
	E-mail	3,007.94
	Fax	4,743.7
	Mail	1,368.8
	Sales visit	17,699,789.36
	Special	1,421,460.74

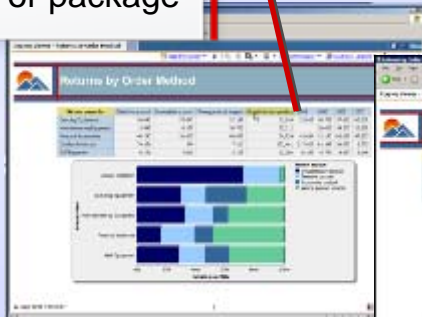
See business or technical lineage depending on your role

In Metadata Workbench view other reports with this data and trace where back to source

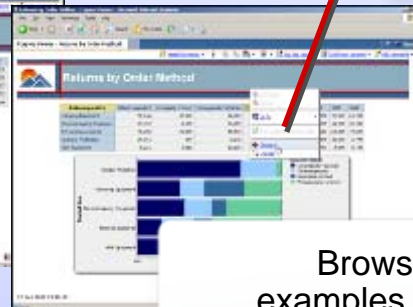
- Business users easily see where data originated to gain confidence in the data they use to drive decisions
- Data modelers and report authors see lineage from report to source, saving time with report development and troubleshooting

Integration with InfoSphere Business Glossary

Select objects of interest from report view or package

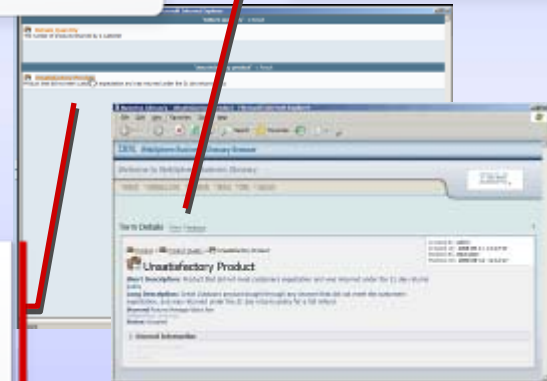


Access Business Glossary directly from Cognos reports



With appropriate rights, contribute to dictionary of terms

Browse definitions, examples, term owner, usage and related terms



- Improve overall business understanding of what terms mean
- Build enterprise dictionary of terms to align organization and increase data confidence

Better Engaged

- Cognos 8 v4 fully engages business users with a more dynamic and interactive BI/PM experience, making it easier for them to find and contribute information
 - Personalized, highly visual dashboards – Go! Dashboards
 - Authoring and exploration via Go! Search
 - Extended analysis for Excel support
 - PowerPlay on Cognos 8 platform



Go! Dashboard Engages the Business User

Dynamic

- Rich Flash or HTML graphics capabilities to quickly create visually appealing dashboards
- Client-Side caching for improved performance

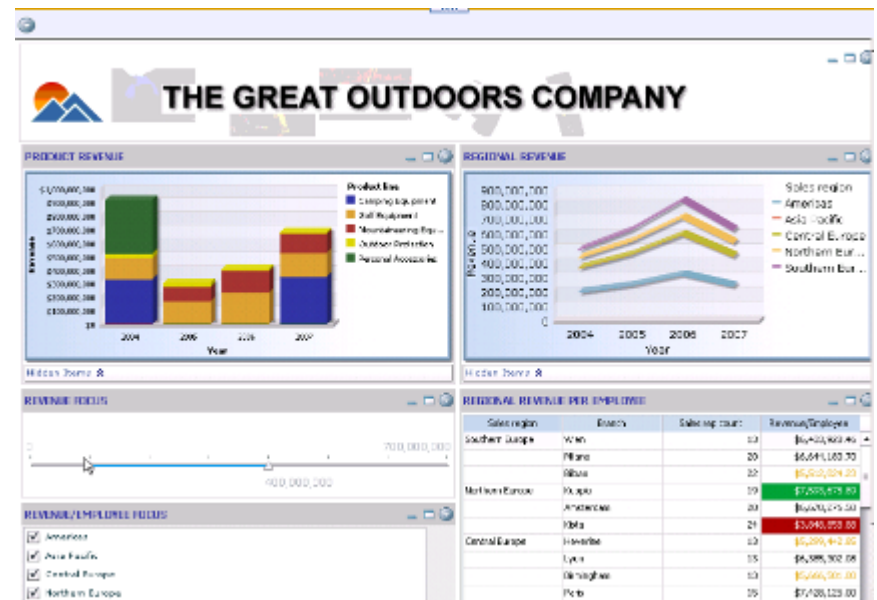
Personalized

- Easy to use drag-and drop interface
- Draw from existing report assets – grab what you need, arrange, sort, filter
- Stand alone or Enterprise Information Portals support

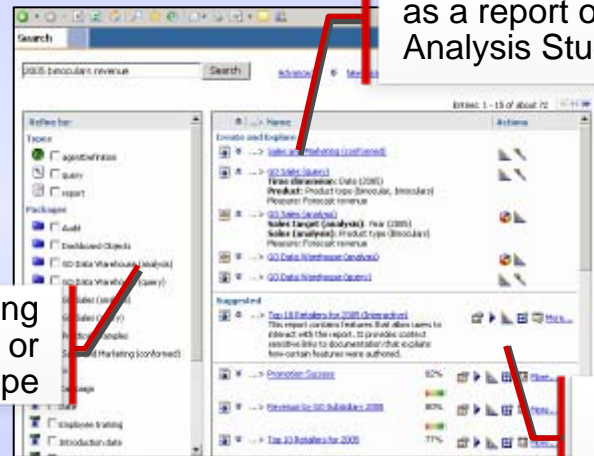
Trusted

- Leverages existing trusted Cognos content
- Author Once, Use Many Times across the entire BI Portfolio

IBM COGNOS 8 v4



Enriched Go! Search



Option to further refine results as a report or to open in Analysis Studio

Refine searches by choosing specific packages, metadata or report type

Ability for administrators to highlight specific reports .

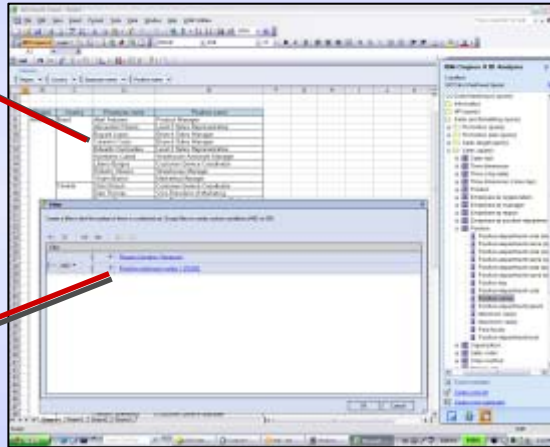
- Full content search – structured and unstructured data
- Dynamic content creation – queries are created based on search items and can be refined in Query Studio
- Integration – 3rd party portals and search applications

Extended Analysis for Excel Support



Slice and dice directly in MS Excel

New complex filters to enable you to quickly focus your data



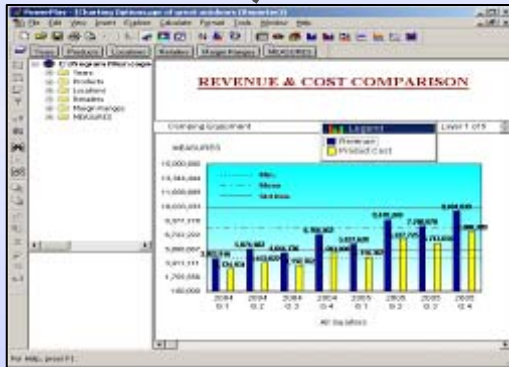
Report on both relational and dimensional sources

- Drag and drop functionality from within MS Excel
- Access now to relational data
- New complex filters

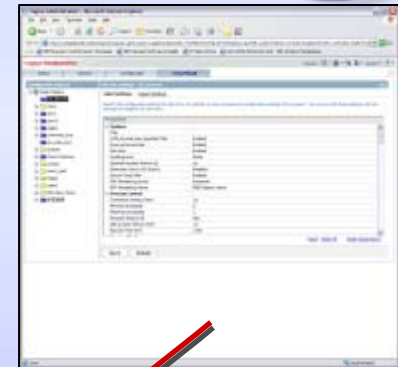
PowerPlay on Cognos 8 Platform



Windows and Web Clients



Quarter	Revenue	Cost
Q1 2004	1,000,000	500,000
Q2 2004	1,200,000	600,000
Q3 2004	1,500,000	750,000
Q4 2004	1,800,000	900,000



Zero footprint administration

- Brings PowerPlay onto the Cognos 8 platform
- Maintains the interface users already know on windows and the web
- Migration of content from PowerPlay 7

Better Aligned

- Alignment around targets, plans and results, as well as relevant business dimensions; All supporting faster cycles of adjustment and realignment across systems, people, departments and enterprises
 - Streamlined Planning interface
 - Business dimension management
 - New scorecard portlets
 - Tighter integration of Cognos TM1 and Now!



New Planning Client



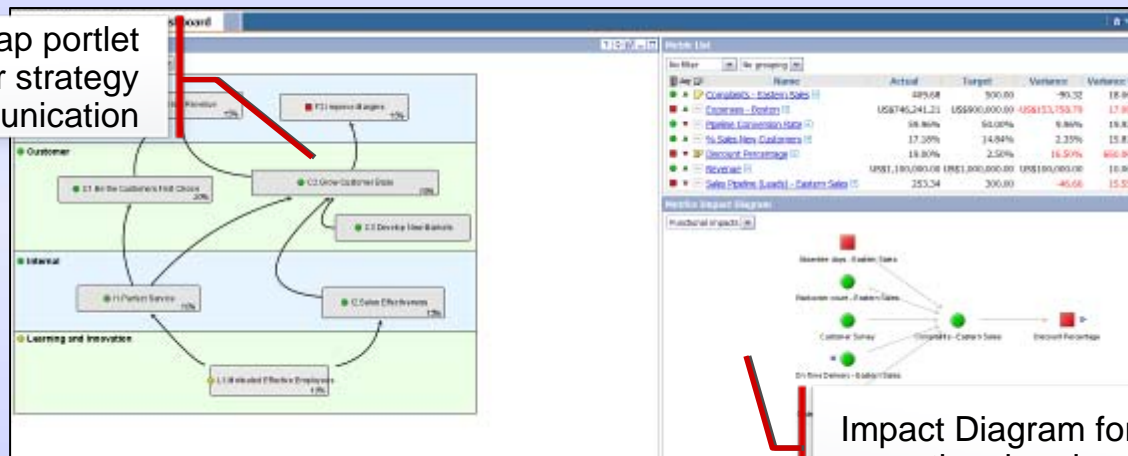
- Based on Eclipse (*IBM open source development language*)
- Improved user experience & personalization
 - More control
 - Improved UI
- Reduced IT administration & maintenance for broader deployment
 - No Active X controls or COM
- Effortless migration of existing applications

Category	Q3	Q4	Total Year
TOTAL PRODUCTS	\$74,356,613	\$1,100,862	\$14,715,416
TOTAL MEDIA	\$6,256,751	\$8,822,566	\$1,092,515
TOTAL ELECTRONICS	\$13,751,915	\$4,803,404	\$4,290,306
TOTAL EXPENSE	\$183,266	\$571,279	\$183,062
Net Profit	\$3,434,819	\$6,470,228	

New Scorecard Portlets



Strategy Map portlet
for easier strategy
communication



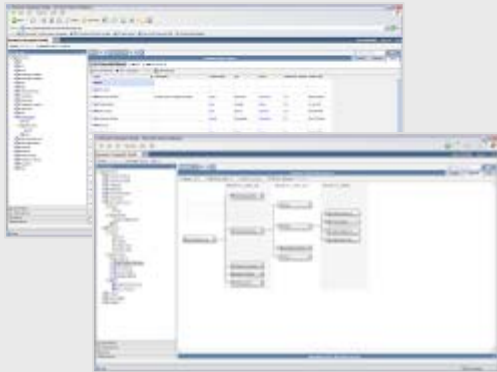
Impact Diagram for better
operational understanding

- Strategy map and impact diagram portlets
- Easier access to scorecard information
- Easy integration into 3rd party portal

Introducing IBM Cognos 8 Business Viewpoint

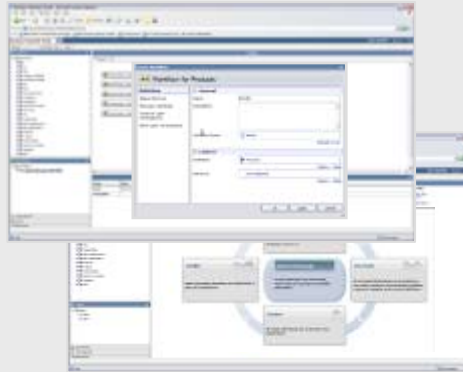
Create and Maintain

Enable the business to capture their own current and future viewpoints



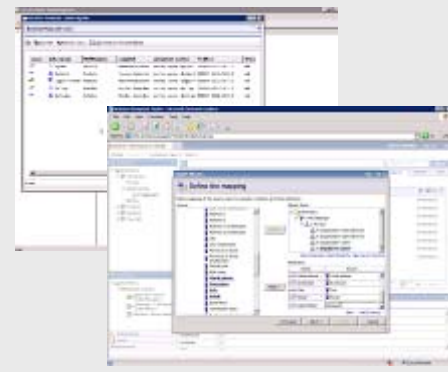
Govern and Collaborate

Replace manual, error-prone efforts with fully transparent, automated and auditable processes



Share and Synchronize

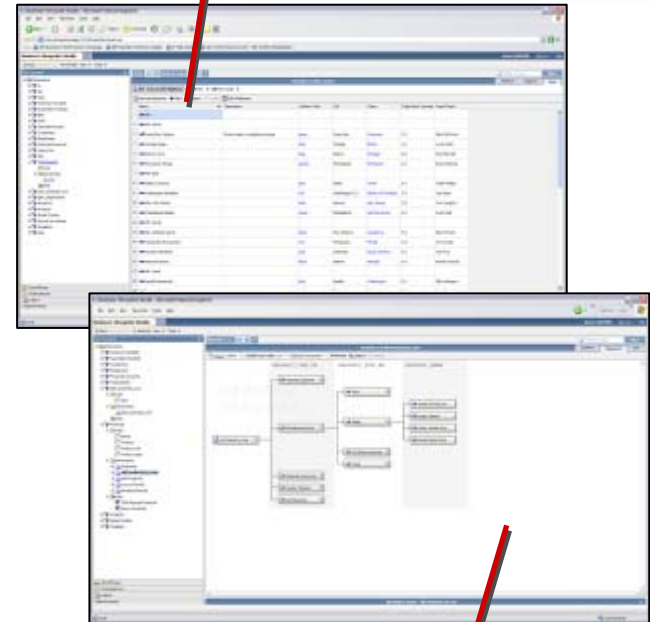
Share approved viewpoints across the decision-making process and systems



Create and Maintain

- **Enable the business to capture their own current and future viewpoints**
 - Create, import, edit, manage, compare dimensions, hierarchies and attributes
 - Address all line item dimensions required for BI and PM (chart of accounts, cost center, product etc)
 - Employ reusable lists and dynamic hierarchies
 - Assemble multiple hierarchies, current and future views, and versions
 - Notify interested parties by role as changes occur

Business users maintain any and all dimensions, attributes and hierarchies

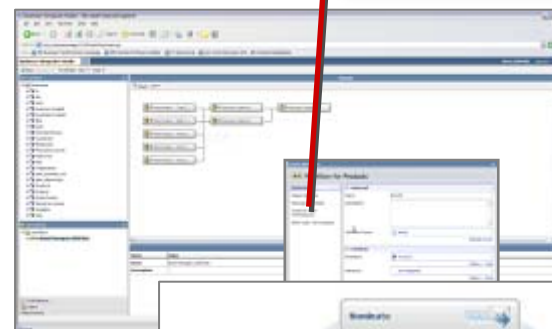


Business users visualize create and relate dimensions, with flexibility to add any number of attributes

Govern and Collaborate

- **Replace manual, error-prone efforts with fully transparent, automated and auditable processes**
 - Collaborate through multi-user contribution and multi-step, multi-user workflow
 - Audit who makes changes and what changes are made
 - Apply version control with ability to roll back
 - Assign security for dimensions, users and user roles
 - Review lineage of maintenance history back to the source
 - Retain all work in central dimension store

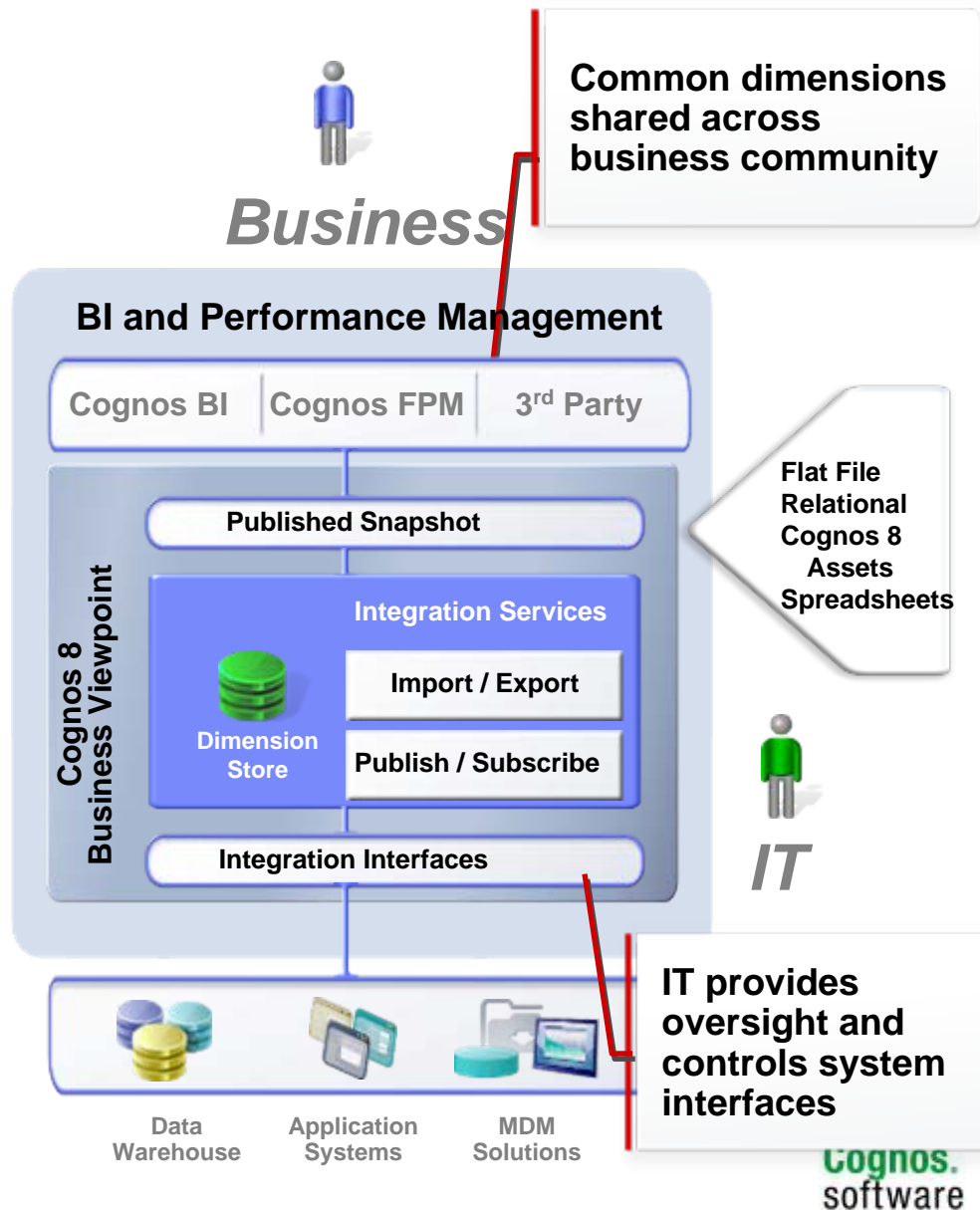
Manage nominations, approvals and versions with business workflow



Assign specific roles and areas of responsibility across the business community

Share and Synchronize

- **Share approved viewpoints across the decision-making process and systems**
 - Selectively publish changes, or provide subscription services, to authorized applications
 - Leverage pre-built integration across Cognos performance management system
 - Cognos 8 Planning, Cognos 8 BI, Cognos 8 Controller, Cognos TM1, Cognos 8 Transformer, Cognos 8 Framework Manager
 - Open API and web services for 3rd parties



To IT Standards



Executive



**Business
Manager**



**Casual
Business User**



**Line
Manager**



**Business
Analyst**

Supporting business user demands without compromising high standards for conformance, compliance and cost effective scalability



- ✓ Broader conformance (64-bit, IPv6, System z...)
- ✓ New data sources (Cognos Now!, Cognos TM1)
- ✓ Data warehousing, integration and quality
- ✓ Greater deployment flexibility
- ✓ New system management methodology



CIO



**BI
Professional**



Architect



Administrator

IBM Cognos 8v4 Platform Leverages New Performance Management Data Sources

TM1 as a data source

- **Leverage power of TM1 across performance management**
 - TM1 data available through published packages
 - Cognos 8 BI capabilities available to Cognos TM1 communities
 - TM1 cubes can be loaded by Data Manager from any source

Now! as a data source

- **Gain broader visibility into operational datasets**
 - Now! data available through published packages
 - Deliver operational metrics across performance management

Cubing Services as a data source

- **IT can leverage power of InfoSphere Cubing Services**
 - Cubing Services data available through published packages
 - Existing DBA skill set optimizes warehouse performance

Virtual View Manager

- **Greater confidence to deploy on-the-fly views**
 - Rebrand and packaging of Composite Information Server

System Management Methodology Provides Additional Auditing Know-How

Jumpstart audit reporting with sample reports and framework manager model

Combine audit and content store data for reporting on accounts, content, server and dispatcher status

The collage includes several Cognos Viewer screenshots:

- Interactive Report Executions:** Shows a table with columns for Item Name, Item Search Path, Version Count, Output Count, and Output Kilobytes (Total). It lists reports like 'Retailer Information' and 'Processed Requests by Dispatcher'.
- Report Content by Job:** Displays a table with columns for Job Name, Date, and Size. It shows details for a job named 'Report Refresh'.
- Process IDs for Active Reports:** Shows a table with columns for PROC ID, User Name, Report Name, Package, and User Email. It lists active processes for reports like 'BSE Admin Console Demo (Full Data)'.
- Data search against cache:** Shows a search interface with a table of results.

Content Saved Output Size Report

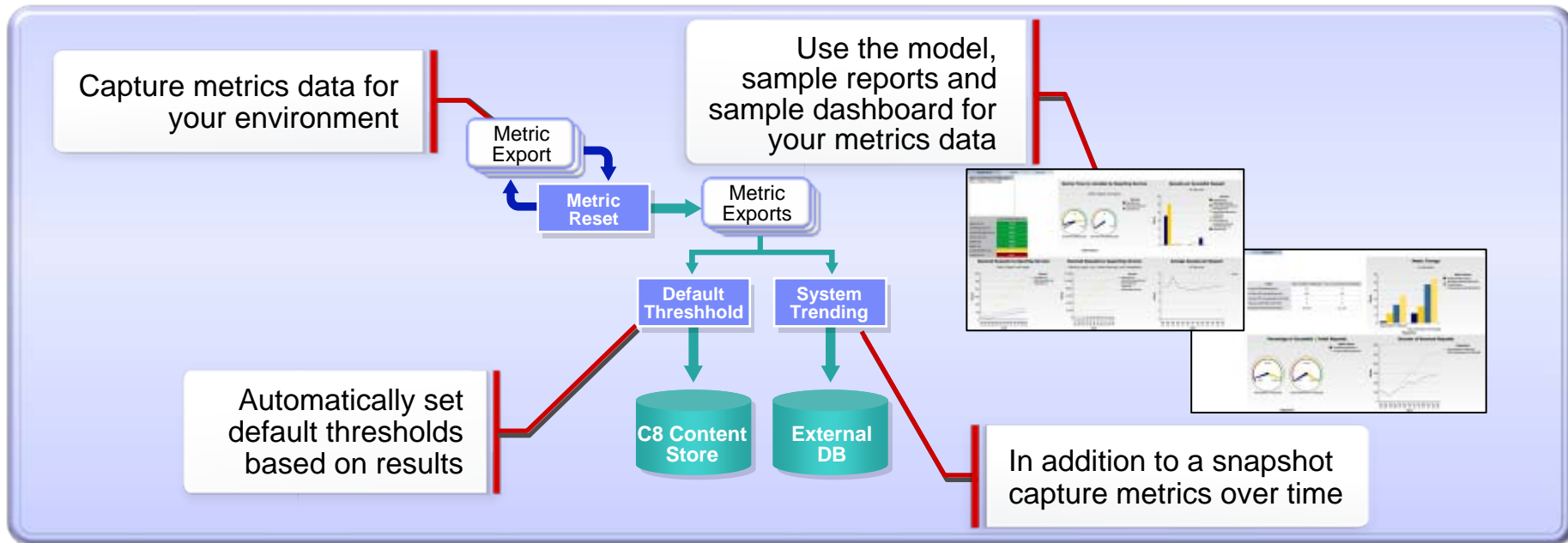
Item Name	Item Search Path	Version Count	Output Count	Output Kilobytes (Total)
Summary				
/content/package[@name='BSE Admin Console Demo']				
Retailer Information	/content/package[@name='BSE Admin Console Demo']/report[@name='Retailer Information']	1	3	239.57
Processed Requests by Dispatcher	/content/package[@name='BSE Admin Console Demo']/report[@name='Processed Requests by Dispatcher']	1	1	113.00
Products (Margin and Cost)	/content/package[@name='BSE Admin Console Demo']/report[@name='Products (Margin and Cost)']			

Item Name	Read	Write	Execute	Policy	Traverse
BSE Admin Console Demo	🔒	🔒	🔒	🔒	🔒
GoSales XML report refresh	🔒	🔒	🔒	🔒	🔒
Multi Page Prompted Report	🔒	🔒	🔒	🔒	🔒
Order Method Stacked User	🔒	🔒	🔒	🔒	🔒
Processed Requests by Dispatcher	🔒	🔒	🔒	🔒	🔒
Products (Margin and Cost)	🔒	🔒	🔒	🔒	🔒
Report Refresh	🔒	🔒	🔒	🔒	🔒
Retailer Information	🔒	🔒	🔒	🔒	🔒
Successful/Failed Request % by Dispatcher	🔒	🔒	🔒	🔒	🔒
Successful/Failed Request Percentage by Dispatcher	🔒	🔒	🔒	🔒	🔒

View account status for users and the associated content for that account

- Administrators quickly determine appropriate level of auditing and configure auditing to best manage their environment
- IT managers are more informed about the overall usage pattern of the user community and can proactive plan for increased volumes

Capture and Automatically Set System Metric Thresholds to Seed Initial System Reporting



- Administrators can quickly leverage thresholds to proactively identify issues before business impact
- Administrators are informed of system management trends to optimize their deployment environment over time

IBM Cognos 8 Platform Continues to Deliver on IT Infrastructure Standards

Expanded Conformance & Compliance

- **Examples of new supported environment**
 - Internet Protocol Standard: IPv6
 - Web Browser: Firefox 3
 - Operating Systems: Linux on IBM System z
 - Application Server: SAP Netweaver 7, IBM WebSphere 6.1
 - Database: Oracle 11g, Teradata 12

Note: For a complete list of supported environments, please

see [www-](http://www-01.ibm.com/software/data/cognos/)

01.ibm.com/software/data/cognos/



On Business Terms To IT and Finance Standards



Empowers business users without compromising IT's high standards for conformance, compliance and cost effective scalability, while driving Performance Management process excellence and better business outcomes for the organization.



Thank
YOU

© Copyright IBM Corporation 2008 All rights reserved. The information contained in these materials is provided for informational purposes only, and is provided AS IS without warranty of any kind, express or implied. IBM shall not be responsible for any damages arising out of the use of, or otherwise related to, these materials. Nothing contained in these materials is intended to, nor shall have the effect of, creating any warranties or representations from IBM or its suppliers or licensors, or altering the terms and conditions of the applicable license agreement governing the use of IBM software. References in these materials to IBM products, programs, or services do not imply that they will be available in all countries in which IBM operates. Product release dates and/or capabilities referenced in these materials may change at any time at IBM's sole discretion based on market opportunities or other factors, and are not intended to be a commitment to future product or feature availability in any way. IBM, the IBM logo, Cognos, the Cognos logo, and other IBM products and services are trademarks of the International Business Machines Corporation, in the United States, other countries or both. Other company, product, or service names may be trademarks or service marks of others.