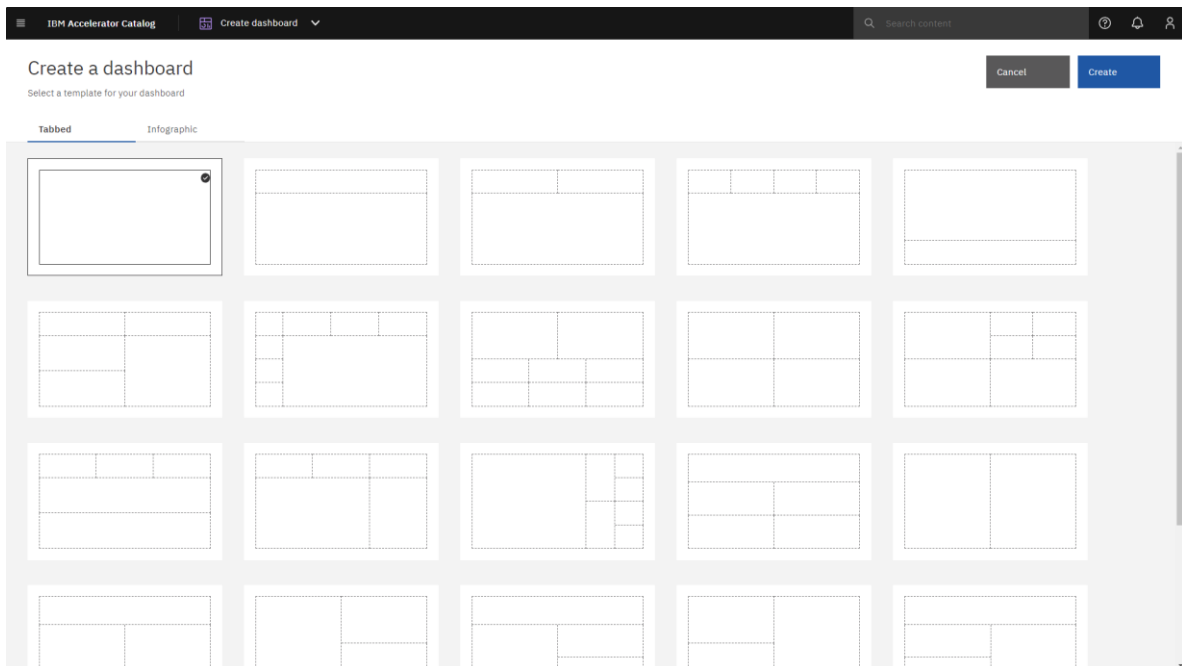


How can I use “alignment” to design a dashboard?

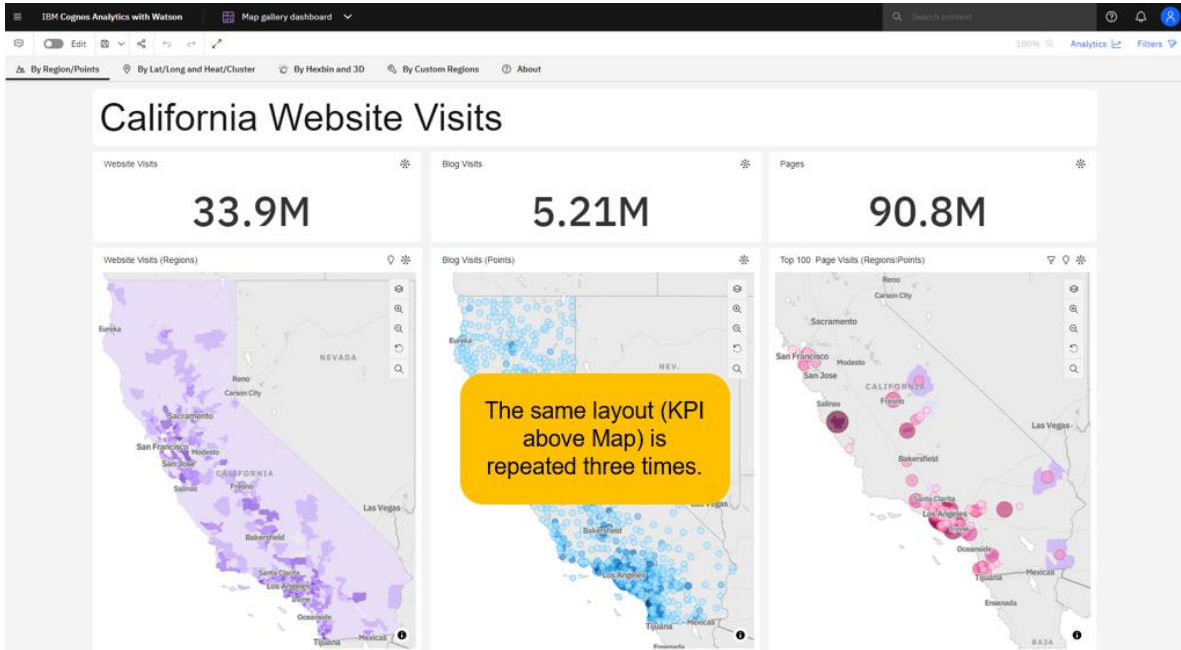
Alignment is an important design principle for dashboarding. Nothing should be placed on the dashboard arbitrarily. Every element should have some visual connection with another element on the page. Everything should line up with something else – the tops of widgets, the lefts of widgets, etc.

Apply a gutter of 20 pixels around every object. Consider applying a color to the gutter that contrasts mildly with the background color of the widgets.

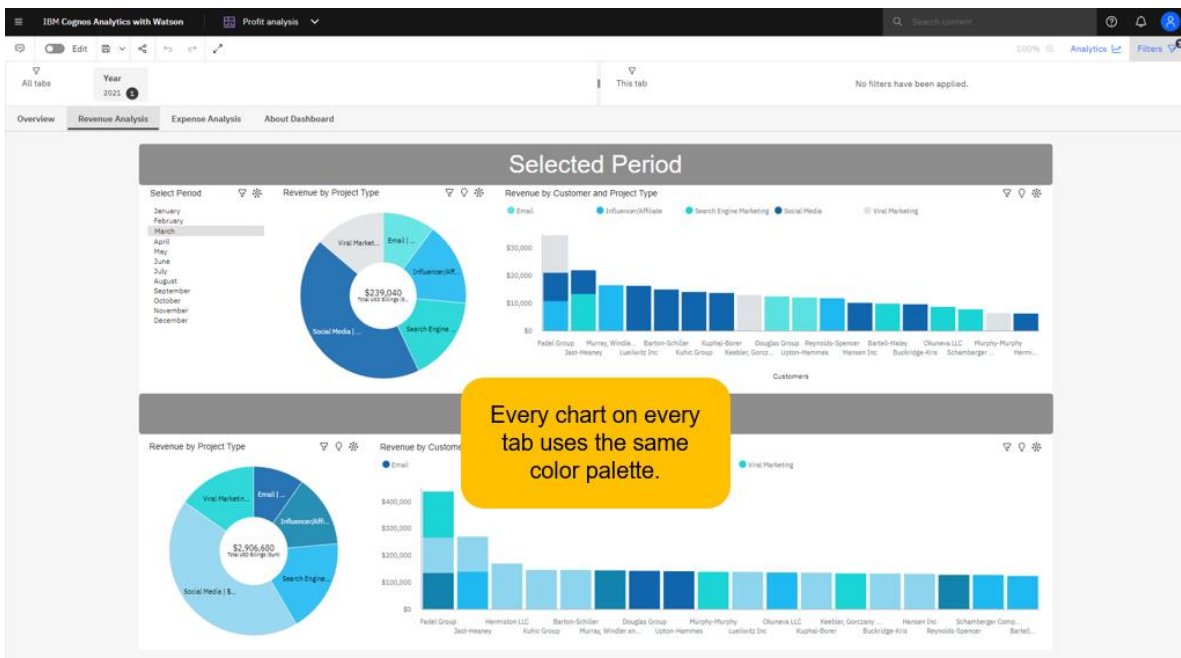
Use a dashboard template to help position and align your widgets:



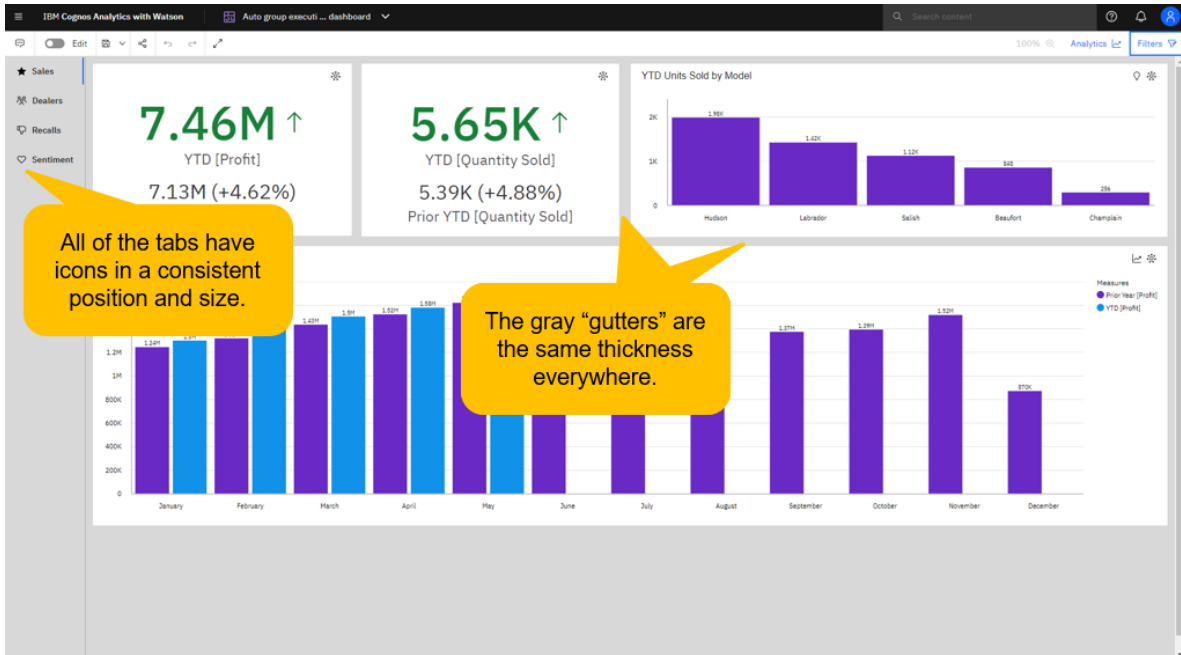
Examples



Source: Team content > Samples > By feature > Core > Dashboards > California website visits



Source: Team content > Samples > By industry > Professional services > Dashboards > Profit analysis



Source: Team content > Samples > By industry > Automotive > Dashboards > Auto group executive dashboard