



INTEGRATED FINANCIAL STATEMENTS BLUEPRINT INTEGRATED FINANCIAL STATEMENTS SETUP DOCUMENT A WEB-BASED PERFORMANCE MANAGEMENT SOLUTION



Table of Contents

BLUEPRINT OVERVIEW	3
MAKING CONTENT FILES AVAILABLE FOR EACH APPLICATION.....	3
2.1 UNZIPPING THE INTEGRATED FINANCIAL STATEMENTS BLUEPRINT CONTENT	3
2.2 COPYING THE NECESSARY FILES.....	4
IBM COGNOS TM1 CONTENT	5
3.1 CONFIGURE A NEW IBM COGNOS TM1 SERVER INSTANCE	5
3.2 TESTING THE NEW IBM COGNOS TM1 SERVER INSTANCE	8
3.3 SETTING UP THE CONTRIBUTOR APPLICATION	10
IBM COGNOS 8 BI CONTENT.....	14
4.1 CREATE THE BI DATA SOURCE.....	14
4.2 IMPORT BI DEPLOYMENT PACKAGE.....	19
4.3 TESTING IBM COGNOS DASHBOARD CONTENT	24



Blueprint Overview

This document explains the content and provides installations steps for a web-based solution reporting for the Integrated Financial Statements Blueprint.

IBM Cognos Blueprints are pre-defined data, process, and policy software models developed in partnership with leading academic institutions to address specific business process problems. They are essentially “quick-start” data models that IBM Cognos customers can download and implement at no extra cost.

Using the Blueprint with your IBM Cognos performance management system will enable users to clearly identify strategic performance and track it in a consistent, logical manner. It also provides a simple yet powerful way to monitor different Metrics and KPIs to better evaluate and take actionable items to increase performance.

Blueprint Contents

- 1. Integrated Financial Statements Blueprint.zip**
This is the entire file structure for the BI deployment, Framework Manager Model and graphics with a categorized folder structure to house the extracted files.
- 2. Integrated Financial Statements BI Deployment.zip**
This is the BI Deployment file consisting of reports and portal pages specific to this Blueprint.
- 3. Integrated Financial Statements Blueprint Setup Instructions.pdf**
Description of the necessary files and steps needed to setup both environments for the Planning and BI portions of the Blueprint.
- 4. Integrated Financial Statement Images.zip**
Images required when rendering dashboards and reports.
- 5. Integratedfinancials.zip**
This file is the Contributor Deployment file which will be imported through the TM1 Administration user interface.

Making Content Files Available for Each Application

2.1 Unzipping the Integrated Financial Statements Blueprint Content

Unzipping the '**Integrated_Financial_Statements_Blueprint_Content.zip**' file will create the following directories:



Name	Size	Type ▲	Date Modified
Deployment File - Reports		File Folder	1/27/2010 3:29 PM
Documentation		File Folder	2/1/2010 9:55 AM
Framework Manager Model		File Folder	1/29/2010 4:42 PM
TM1 Application		File Folder	12/21/2009 2:32 PM

* We will reference these directories, which store the pertinent files.

2.2 Copying the Necessary Files

1. Copy the **Integrated_Financial_Statements_Blueprint_BI_Deployment.zip** file from the 'Deployment File – Reports' folder to the <IBM Cognos 8 install location>\deployment folder.

Note: Depending upon the BI environment configuration the location of the deployment folder may be setup to a different server, confirm the location with the BI administrator.

2. Copy the contents of the 'TM1 Application' folder to <YourIBMCognosTM1 Blueprint Folder>\



IBM Cognos TM1 Content

The purpose of the TM1 data model is to have it available as a data source for the Business Intelligence Analytics. The TM1 data model should not be considered anything more than this and should not be seen as an example of manufacturing planning, retail planning, allocation methodology or any other type of planning. For proven practices for specific planning processes please refer to the blueprints designed to support functional and industry sector blueprints.

The following steps will navigate through the steps required to create a new IBM Cognos TM1 Server instance and configure the objects needed for the IBM Cognos TM1 content to work properly.

3.1 Configure a new IBM Cognos TM1 Server instance

The following steps provide a quick guideline on how to get a new IBM Cognos TM1 server instance, however a more detailed explanation can be found in the IBM Cognos TM1 Server Administration document.

To configure a new IBM Cognos TM1 Server instance the following files are required:

1. Tm1s.cfg
2. Tm1s.lic
3. A shortcut to execute tm1s.exe using the Blueprint content as the working directory.

Copy the tm1s.lic File

The **tm1s.lic** file is included in your IBM Cognos TM1 installation. This file can be copied from <YourIBMCognosTM1_DirectoryInstall>/bin folder. The content of this file is similar to:

```
DATABASE_TYPE=TM1 PROPRIETARY
CLASS=505
LICENSE=<YourLicense>
MAX_USERS=99999
MAX_READONLY_USERS=99999
EXPIRE_DT=<YourExpiryDate>
LOCATION=
ORGANIZATION=<YourCompany>
LICENSOR=
INSTALL_ID=
PRODUCT= .....
```

Copy the **tm1s.lic** file to '<YourIBMCognosTM1 Blueprint Folder>\IntegratedFinancials\objects' to create a new server instance.



Modify the Tm1s.cfg server configuration file

From the '<YourIBMCognosTM1 Blueprint Folder>\IntegratedFinancials\objects' folder, modify the 'tm1s.cfg' file.

This file needs to be modified to **point to the IBM Cognos TM1 Admin Server on your environment**. The file is provided as:

```
[TM1S]
ServerLogging=F
SecurityPackageName=Kerberos
IntegratedSecurityMode=1
UseSSL=T
ServerName=Integrated Financials
DataBaseDirectory='<YourIBMCognosTM1 Blueprint Folder>\IntegratedFinancials\objects'
AdminHost=YourAdminHost
PortNumber=90001
ClientMessagePortNumber=
Language=ENG
SaveTime=
DownTime=
ProgressMessage=True
AuditLogOn=F
AuditLogMaxFileSize=100 MB
AuditLogUpdateInterval=60
DefaultMeasuresDimension=T
```

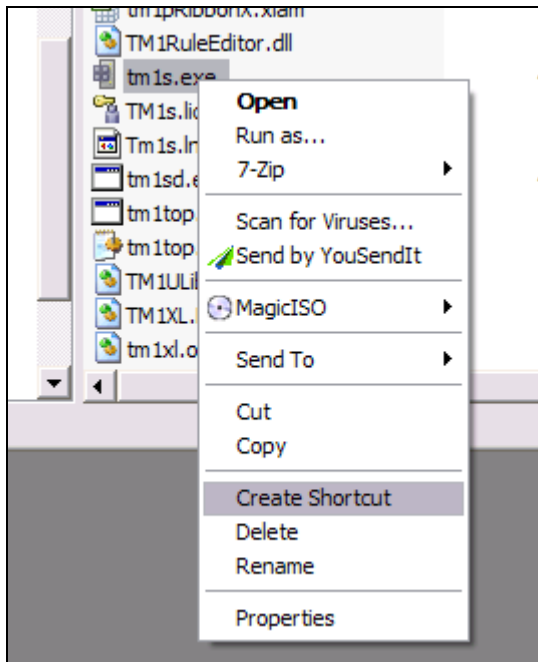
The parameters highlighted in **red** need to be reviewed and modified accordingly for your company's environment. If there is certainty that the default TCP ports above are not being used, they can be left unchanged.

The "AdminHost" parameter would need to be changed to reflect the IBM Cognos TM1 Admin Sever host setting in your environment.

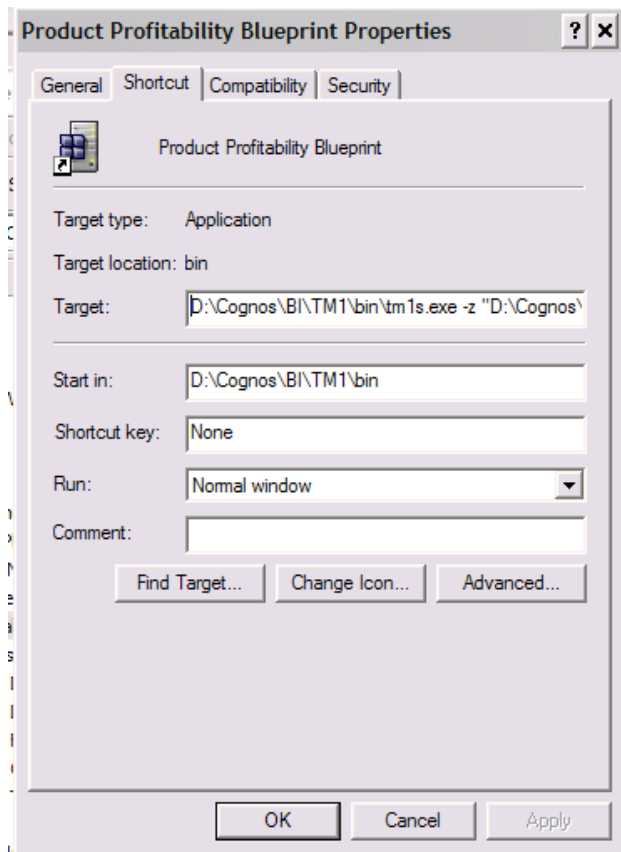


Modify/Create the Server Shortcut

Navigate to '<YourIBMCognosTM1_DirectoryInstall>/bin' folder; create a shortcut to tm1s.exe.



1. Copy the shortcut created to '<YourIBMCognosTM1 Blueprint Folder>\objects'
2. Rename the shortcut to be "Integrated Financials"
3. Edit the Shortcut Properties



The **"Target" property** of the shortcut needs to be changed to read:

<YourIBMCognosTM1 InstallFolder>\bin\tm1s.exe -z "
<YourIBMCognosTM1 Blueprint Folder>\objects"

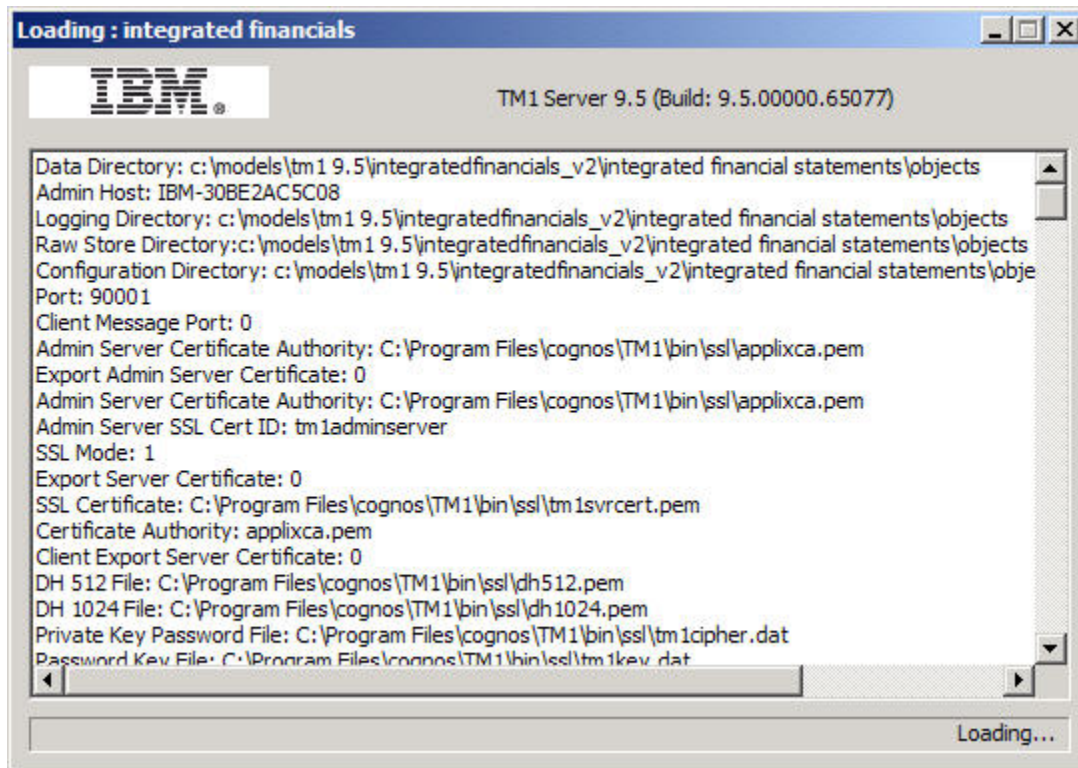
Notice that the last portion of the command is the folder where the IBM Cognos TM1 content was extracted to.

Click onto **OK** to save the changes.

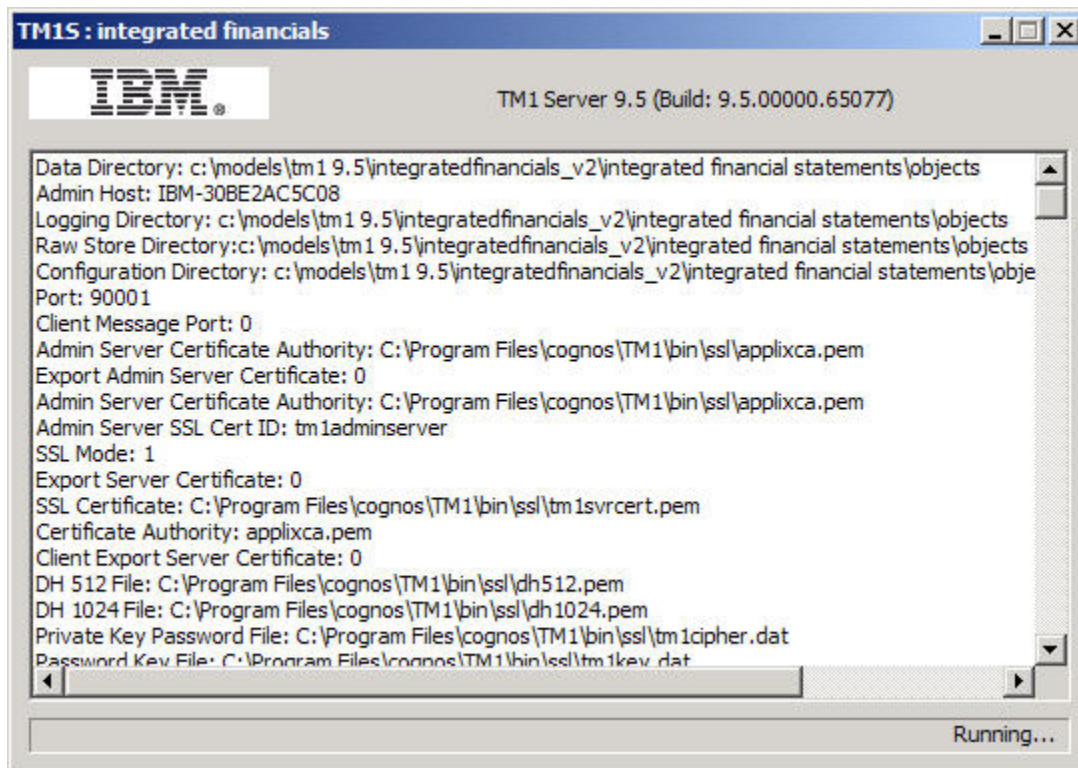
3.2 Testing the new IBM Cognos TM1 Server instance

From the '**<YourIBMCognosTM1 Blueprint Folder>\objects**' folder, double click the '**Integrated Financials**' shortcut.

The following dialog will appear:



After all cubes have been loaded, the lower right corner of the dialog will display **Running...**:





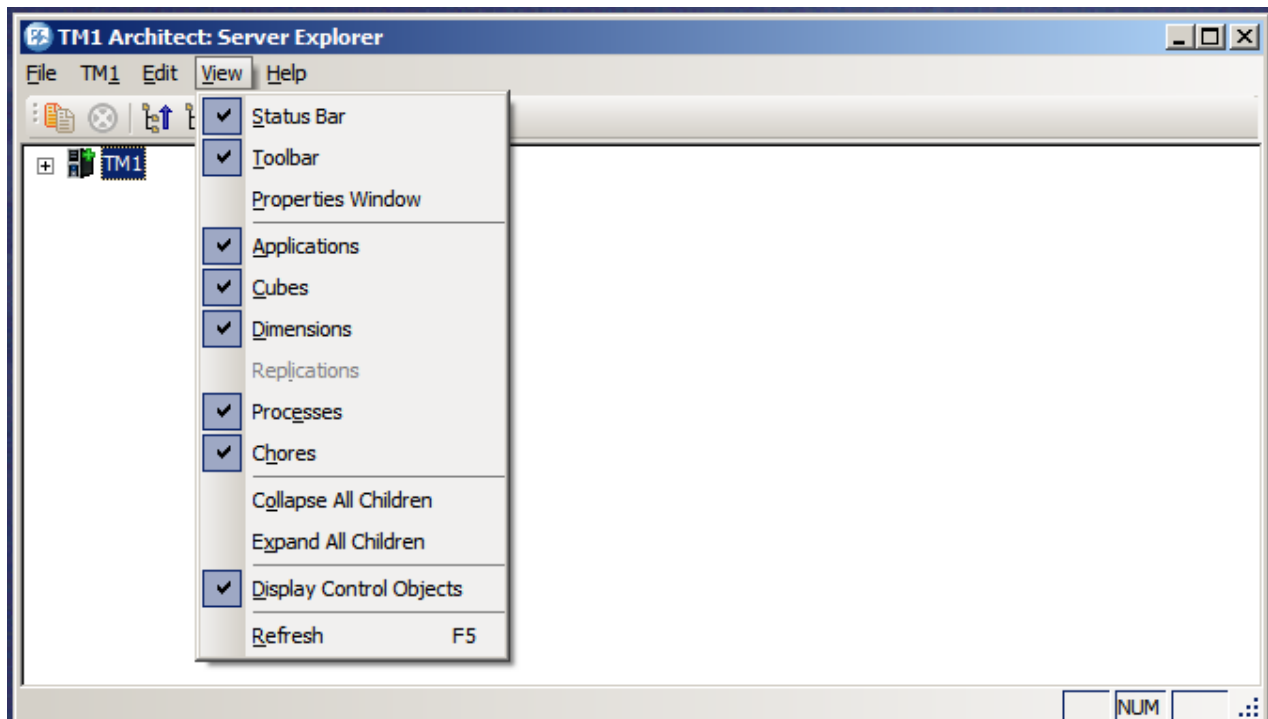
Once the newly created IBM Cognos TM1 Server instance is up and running, Architect and/or IBM Cognos TM1Web can be used to navigate through the content.

3.3 Setting Up the Contributor Application

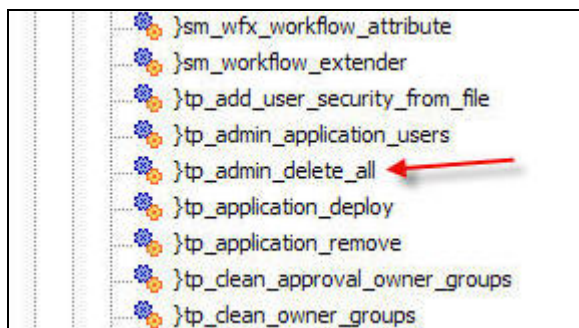
3.3.1 Open TM1 **Architect**

3.3.2 Double click the **Integrated Financials** application and **Login** as User: **admin**

3.3.3 Click on the Menu Item – View and validate Display Control Objects is checked

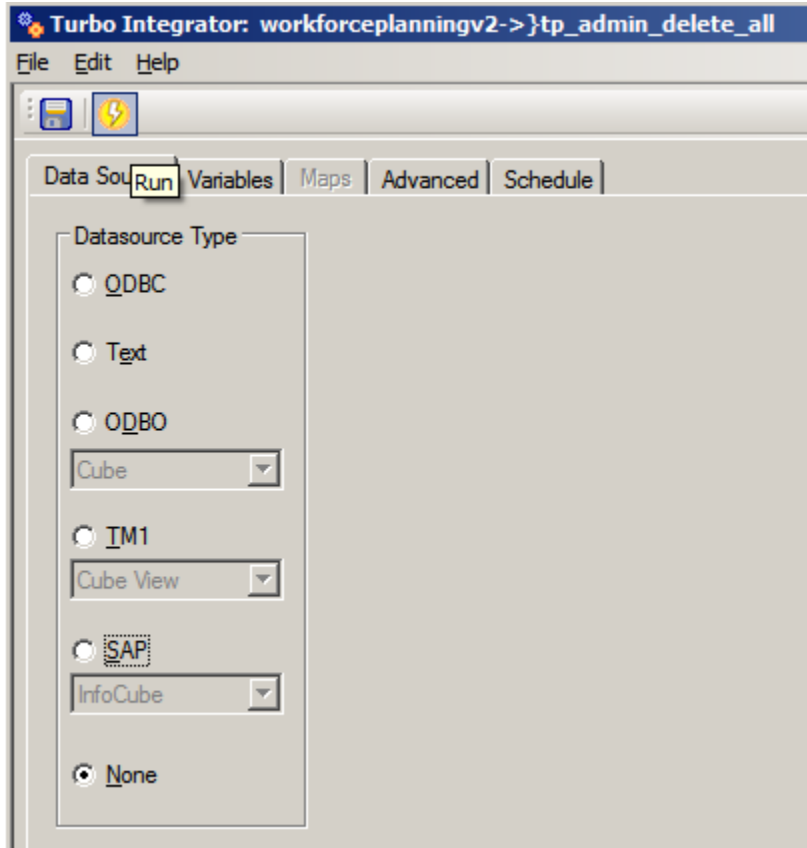


3.3.4 Expand Processes node and double click }tp_admin_delete_all





3.3.5 Click **run** and **OK**

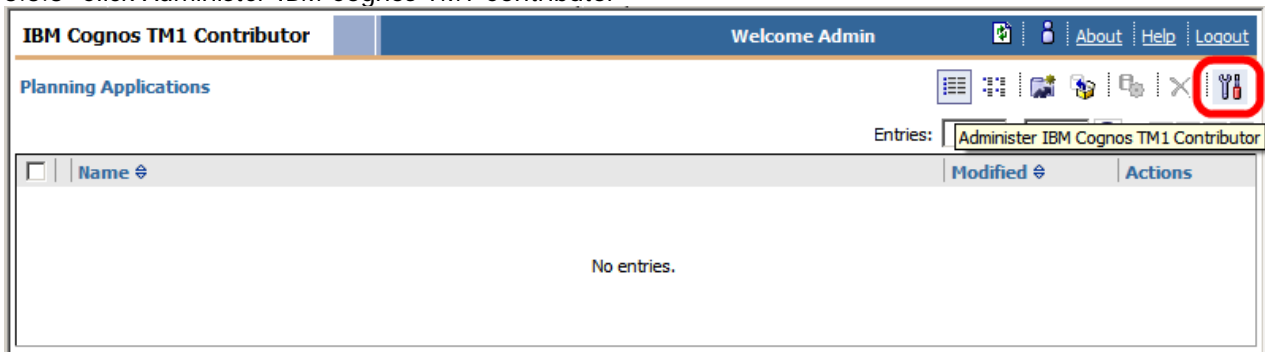


3.3.6 Copy the "Integrated Financials.zip" file from the Contributor folder into

'<YourIBMCognosTM1 Blueprint Folder>\IntegratedFinancials\'

3.3.7 Launch your TM1 Contributor environment, for example, http://yourTM1_Server:8085/pmpsvc/ and Login as User: admin

3.3.8 Click Administer IBM Cognos TM1 Contributor



3.3.9 Click [Add...](#) under the Server Names: section

3.3.10 Enter your TM1 Admin Host and click the Refresh icon

3.3.11 For the Server Name: select Integrated Financials and OK



Add Server

Admin Host:
Your_TM1_Server_Name

Server Name:
blueprint_name

OK Cancel

3.3.12 Click OK

3.3.13 Click OK

3.3.14 Click the Import Application icon

IBM Cognos TM1 Contributor Welcome Admin

Planning Applications

Entries: - Import Application

Name	Modified	Actions
No entries.		

3.3.15 Choose *yourTM1ServerName*:integratedfinancials for the TM1 Server

3.3.16 Browse to '<YourIBMCognosTM1 Blueprint Folder>\IntegratedFinancials\' and select the "Integrated Financials.zip"

3.3.17 Uncheck Import application security and Click Import



Application Import

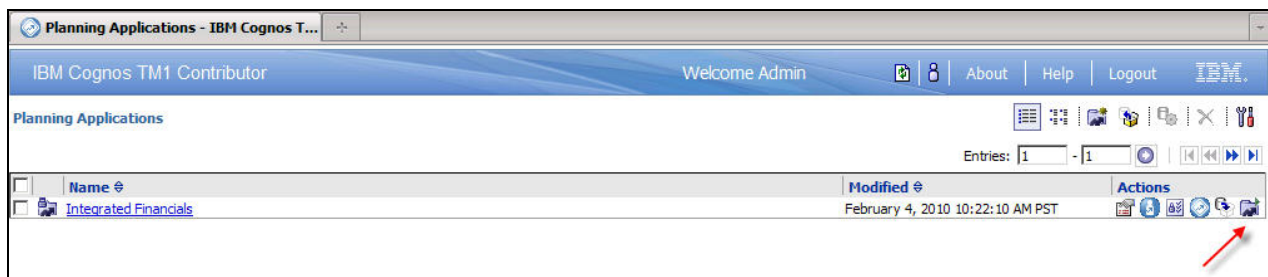
Specify your import file and import settings.

TM1 Server:

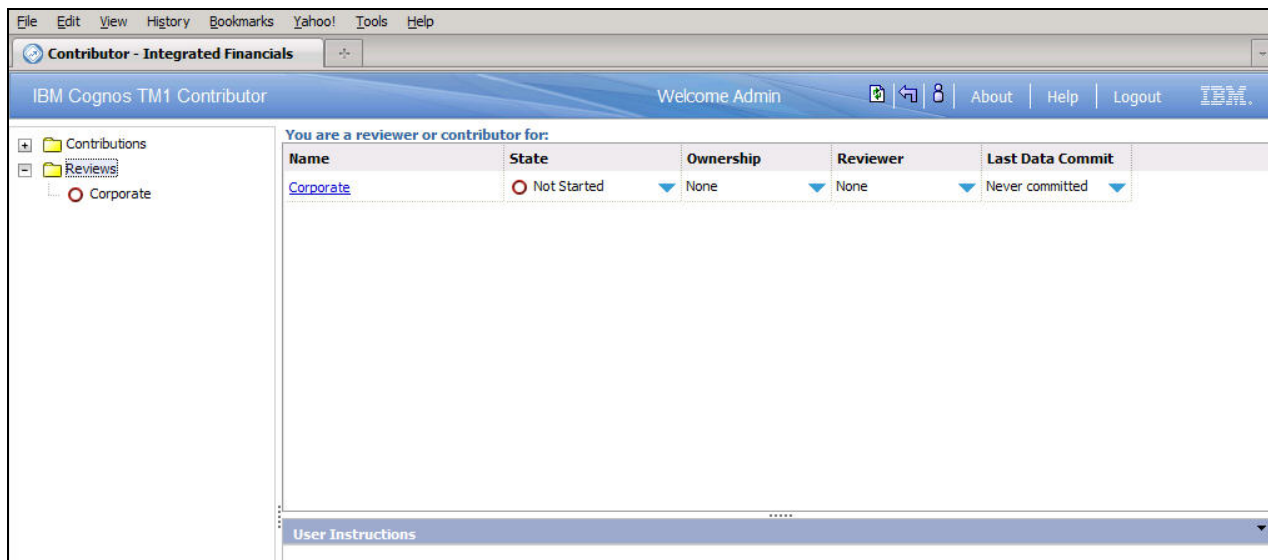
Application file:

☐ Import application security
☒ Import application properties

3.3.18 Click the Activate Application icon



3.3.19 Click the Integrated Financials link to test, if installed correctly it should resemble the following



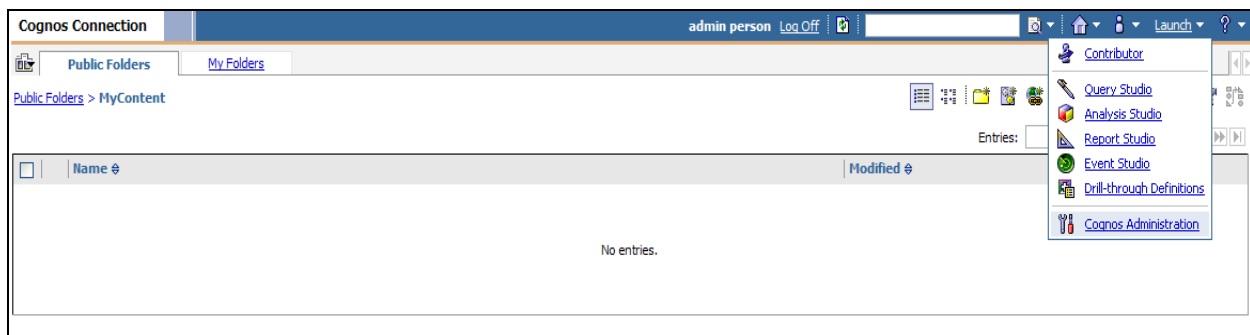


IBM Cognos 8 BI Content

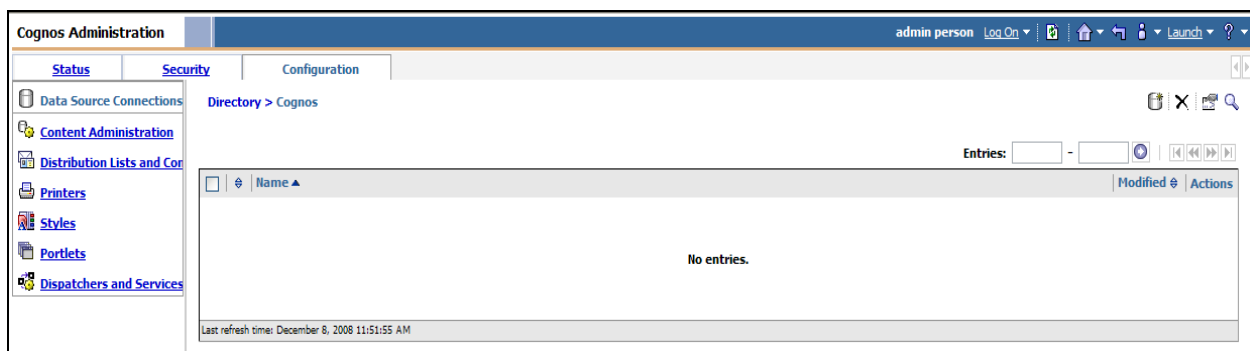
The following steps will navigate through the steps required to configure the objects needed for the IBM Cognos BI content to work properly.

4.1 Create the BI data source

1. Open a browser window and go to **IBM Cognos Connection**. If Authentication is setup, login with a directory **Administrator** user
2. Click on to **Launch** and select **IBM Cognos Administration**



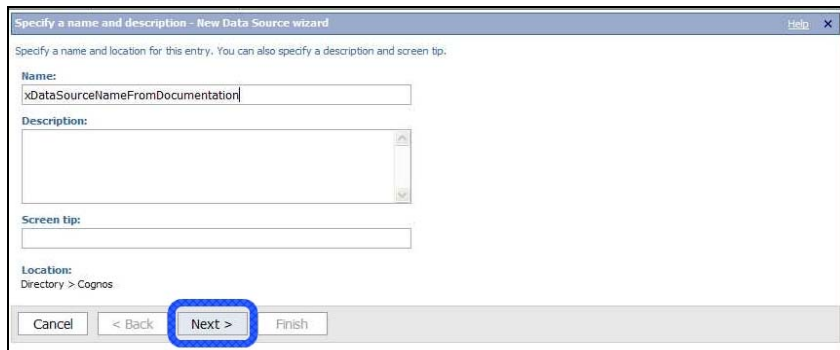
3. Click on the **Configuration tab**; make sure '**Data Source Connections**' is selected



4. Click the Data Sources tab then **click the New Data Source Icon** 



5. Name the Data Source exactly as: **"Integrated Financial Statements Blueprint"** then click **Next >**





6. Select the 'TM1' option; then click **Next** >

Specify the connection - New Data Source wizard

Specify the parameters for the connection of this new data source. The name of the data source is used to set the name of the connection.

Type:

IBM Cognos Finance

- IBM Cognos Finance
- IBM Cognos Now! Cube
- IBM Cognos Planning - Contributor
- IBM Cognos Planning - Series 7
- IBM Cognos PowerCube
- IBM InfoSphere Warehouse cubing services (XMLA)
- Composite (ODBC)
- IBM Cognos Virtual View Manager (ODBC)
- DB2
- Hyperion Essbase/IBM DB2 OLAP Server
- Informix
- Microsoft SQL Server (ODBC)
- Microsoft SQL Server (OLE DB)
- Microsoft SQL Server (SQL 2005 Native Client)
- Microsoft Analysis Services (via ODBO)
- Microsoft Analysis Services 2005
- ODBC
- Oracle
- Progress OpenEdge
- Red Brick (ODBC)
- SAP BW
- Sybase Adaptive Server Enterprise (CT-Lib)
- Sybase Adaptive Server Enterprise (CT-15)
- Teradata (ODBC)
- TM1**
- XML
- Other type



- Fill out the parameters for the TM1 connection then click [Test the connection...](#)

Specify the TM1 connection string - New Data Source wizard

Edit the parameters to build a TM1 connection string.

Administration Host:
localhost

Server Name:
MyServerName

Signon
Select whether a user ID and password is required in the connection string and, if so, whether to create a signon.

☒ User ID
☐ Password
☒ Create a signon that the Everyone group can use:

User ID:
xCognosDatabaseUser

Password:

Confirm password:

Testing
[Test the connection...](#)

- Click **Test** to verify the connection is setup correctly

Test the connection - New Data Source wizard

Test the parameters that make up the database connection.

Connection string:
 ^User ID=^?Password;LOCAL;OL;DBInfo_Type=MS;Provider=SQLEODB;User ID=%s;Password=%s;Data Source=xDatabaseServerName;Provider_String=Initial Catalog=xBlueprintPublishTableName;@COLSEQ=

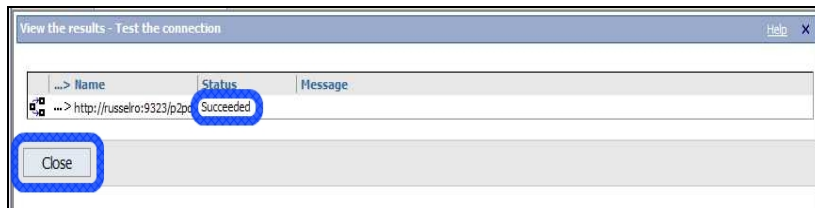
Test

Dispatcher:
 http://russeiro:9323/p2pd (Configuration)

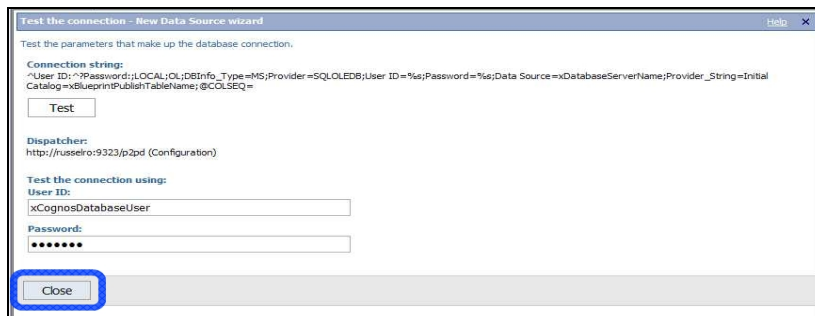
Test the connection using:
User ID:
 xCognosDatabaseUser
Password:

Close

- The following screen should indicate **Succeeded** below the Status then click **Close**



10. Click **Close** again





11. Click **Finish** to add the new data source.

Edit the parameters to build a TM1 connection string.

Administration Host:

Server Name:

Signon

Select whether a user ID and password is required in the connection string and, if so, whether to create a signon.

☒ User ID
☐ Password
☒ Create a signon that the Everyone group can use:

User ID:

Password:

Confirm password:

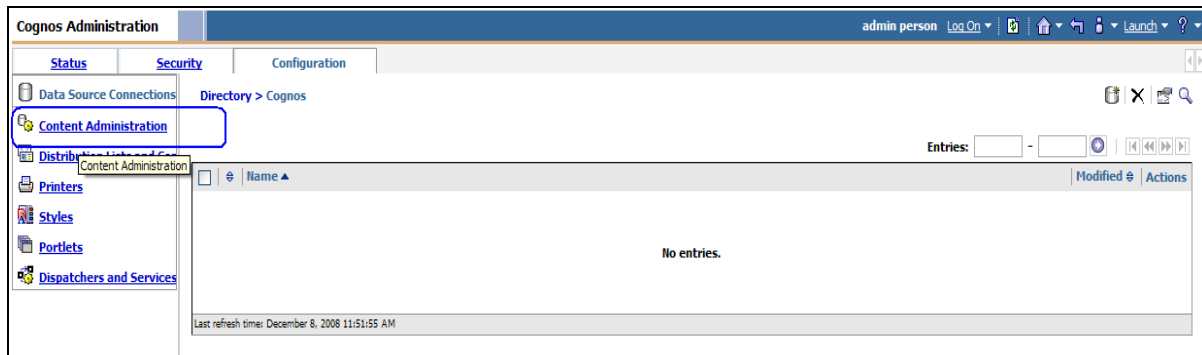
Testing

[Test the connection...](#)

Cancel < Back Next > **Finish**

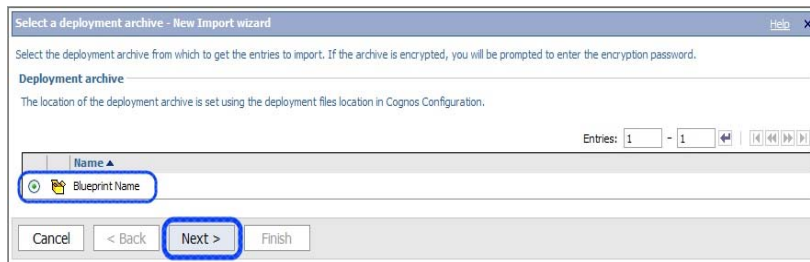
4.2 Import BI Deployment Package

1. Run the Import Wizard to bring in the BI Content into the IBM Cognos Connection portal.
2. From the screen in the previous step, select Content Administration.

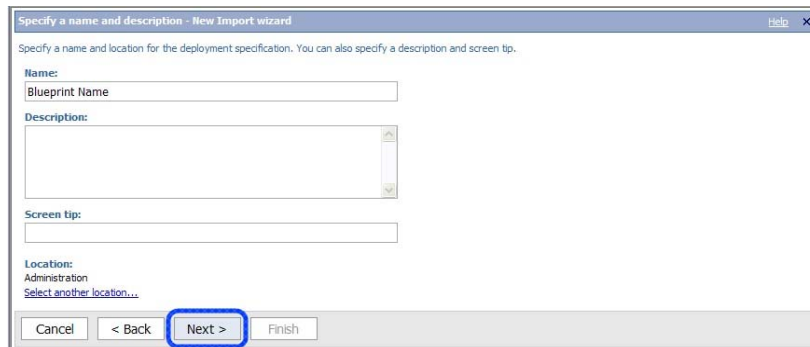


3. Click the New Import icon 

4. Select the import package named 'Integrated_Financial_Statements_Blueprint_BI_Deployment' then click **Next >**



5. Verify the Name is 'Integrated_Financial_Statements_Blueprint_BI_Deployment' then click **Next >**





6. Specify the options and **DO NOT** check 'Disable after import' then click **Next >**

Select the public folders content - New Import wizard

Select one or more packages or folders and select the options to include in the import.

Public folders content

Change the target name of packages and folders if you do not want to overwrite them in the target with packages and folders from the deployment archive. Disable the packages and folders if you do not want users to access them in the target after the import.

Entries: 1 - 1

<input checked="" type="checkbox"/>	Name	Target name	<input type="checkbox"/> Disable after import	In target content	Modified
<input checked="" type="checkbox"/>	Blueprint Name	Blueprint Name	<input type="checkbox"/>		

Options

☐ Include report output versions

Conflict resolution:

☐ Keep existing entries

☒ Replace existing entries

☐ Include run history

Conflict resolution:

☐ Keep existing entries

☒ Replace existing entries

☐ Include schedules

Conflict resolution:

☐ Keep existing entries

☒ Replace existing entries

Cancel < Back **Next >** Finish

7. Specify the general options, select 'The user performing the import' and 'New entries only' then click **Next >**

Specify the general options - New Import wizard

Specify the options applicable to all the entries in the import.

Access permissions

☐ Include access permissions

☐ Apply to new entries only

☒ Apply to new and existing entries

External namespaces

☐ Include references to external namespaces

☒ Do not include references to external namespaces

Entry ownership

Set the owner to:

☐ The owner from the source

☒ The user performing the import

Apply to:

☒ New entries only

☐ New and existing entries

Cancel < Back **Next >** Finish

8. Review the summary options selected then click **Next >**



Review the summary - New Import wizard

The Import wizard is ready to import into the target environment.
If you want to change any settings, click Back.
If you are satisfied with the settings and want to select whether to run, schedule, or save only, click Next.

Deployment specification

Name: Blueprint Name Description:

Deployment archive

Name: Blueprint Name

Public folders content

Name	Target name	Disable after import	In target content	Modified
Blueprint Name	Blueprint Name			

Options:

Include report output versions
Replace existing entries
Include run history
Replace existing entries
Include schedules
Replace existing entries

Directory content

Cancel < Back **Next >** Finish

9. Choose 'Save and run once' then click **Finish**

Select an action - New Import wizard

Select whether you want to run, schedule, or save only, when the wizard closes.

Action:

☒ Save and run once
☐ Save and schedule
☐ Save only

Cancel < Back **Next >** **Finish**

10. Specify the time to run the import select 'Now' and 'Keep the existing report specifications versions' then click **Run**

Run with options - Blueprint Name

Select when you want to run this import.

Time:

☒ Now
☐ Later: May 22, 2008 2 : 48 PM

Content:

☒ Content store
☒ Directory
☒ Cognos namespace
☒ Public Folders
☒ Blueprint Name

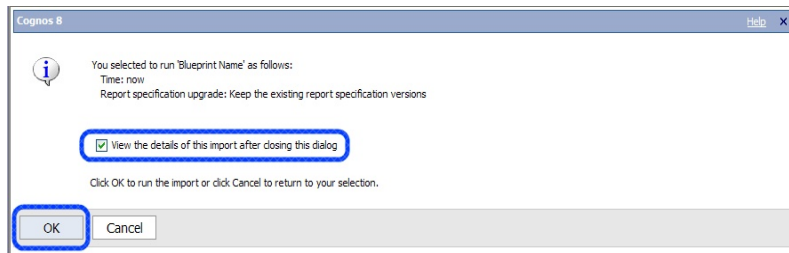
Report specification upgrade

You may want to keep existing report specification versions for compatibility with existing applications.

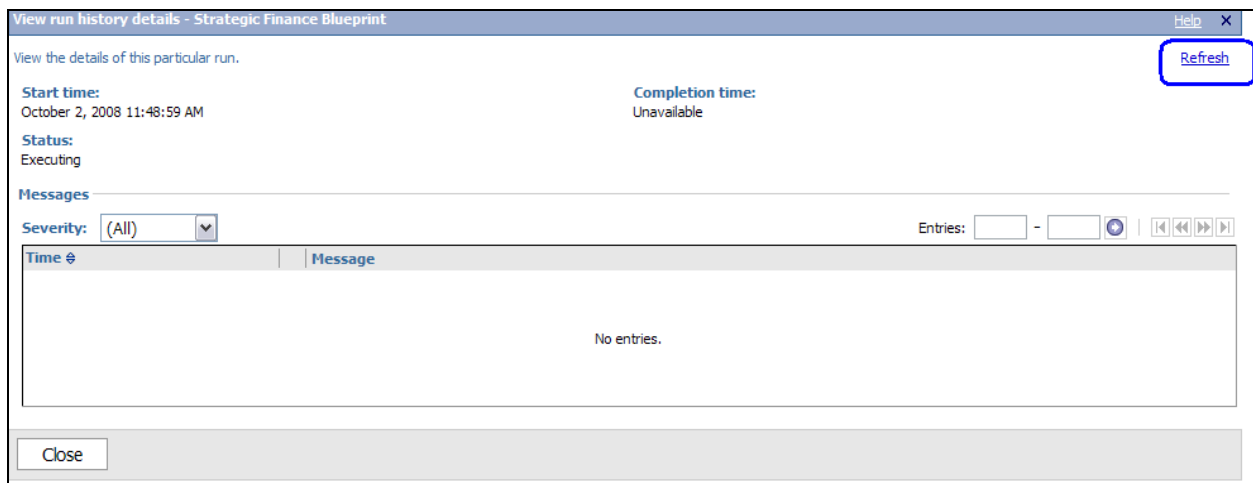
☐ Upgrade all report specifications to the latest version
☒ Keep the existing report specification versions

Run Cancel

11. Check 'View the details of this import after closing this dialog' then click **OK**



12. Initial view of the import deployment record will be blank. Press the 'Refresh' hyperlink.



13. If the deployment import has not finished click 'Refresh' again until it shows a completion time, then click **Close**.



Cognos Administration

admin person Log On

Status Security Configuration

Data Source Connections

Content Administration

Distribution Lists and Cor

Printers

Styles

Portlets

Dispatchers and Services

View an import deployment record - Blueprint Name - Import

View the details of this particular run.

Start time:
December 8, 2008 12:57:54 PM

Completion time:
December 8, 2008 12:57:55 PM

Status:
Succeeded

Messages

Entries: 1 - 1

Message	Name
CM-REQ-2300 Import is complete. 1 object(s) were imported. 0 object(s) failed.	...> /

Deployment archive

Name:
Blueprint Name

Public folders content

...> Name	Target name	Disable after import
...> Blueprint Name	...> Blueprint Name	

Options:

Include report output versions
Replace existing entries

Include run history
Replace existing entries

Do not include schedules

Directory content

Do not include Cognos groups and roles

Do not include distribution lists and contacts

Do not include data sources and connections

General Options

Do not include access permissions

Do not include references to external namespaces

Set the owner to the user performing the import

Close

4.3 Testing IBM Cognos Dashboard Content

After the Import is performed a new folder will appear named '**Integrated Financial Statements Blueprint**' in the IBM Cognos Connection portal. The content of this folder will display as:

Public Folders My Folders

Public Folders > Integrated Financial Statements Blueprint

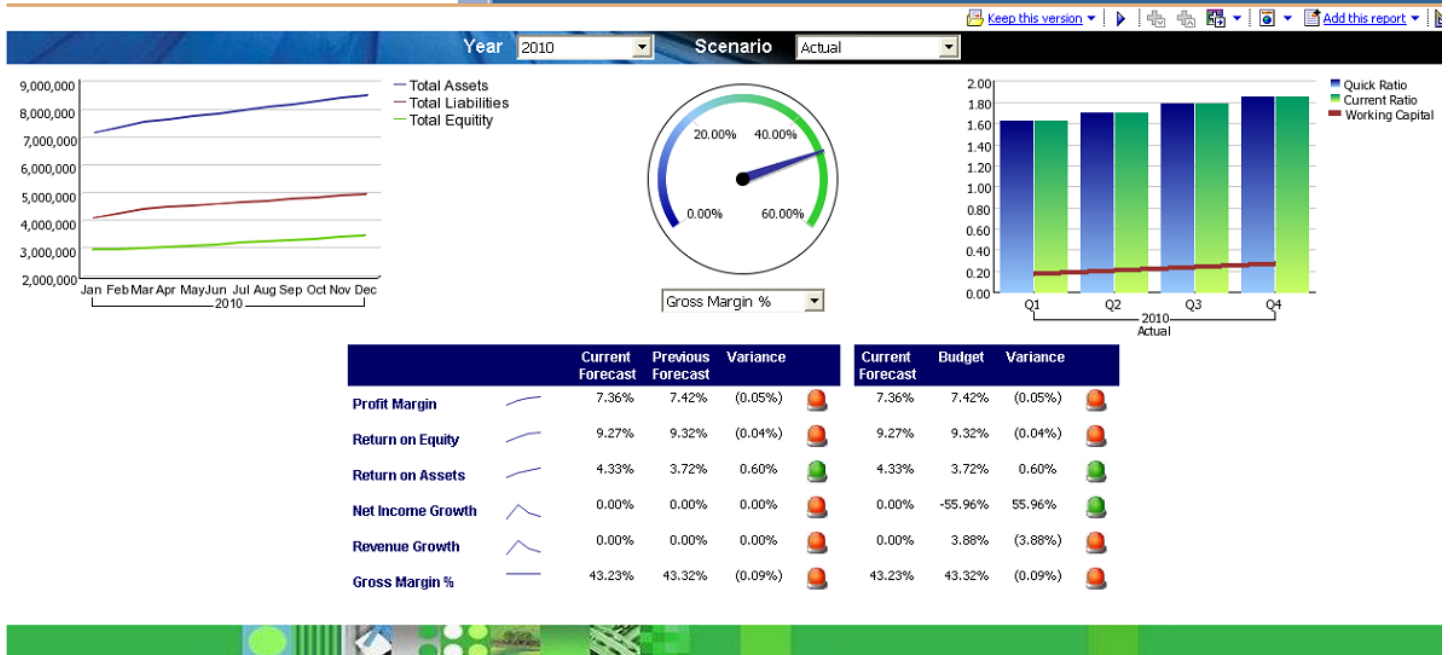
Entries: 1 - 2

Name	Modified	Actions
Packages	January 29, 2010 4:43:42 PM	More...
Reports	January 25, 2010 3:30:03 PM	More...

To test the content, from the **Reports** folder, launch the '**Integrated Financial Statements Dashboard**' at the top of the list. The following screen should appear:



Cognos Viewer - Integrated Financial Statements Dashboard



Testing can then be performed on each of the reports listed in the Reports folder.