



**BRANCH PERFORMANCE BLUEPRINT
BRANCH PERFORMANCE SETUP DOCUMENT
A WEB-BASED PERFORMANCE MANAGEMENT SOLUTION**



Table of Contents

BLUEPRINT OVERVIEW.....	3
PREREQUISITES.....	3
MAKING CONTENT FILES AVAILABLE FOR EACH APPLICATION.....	4
2.1 UNZIPPING THE BRANCH PERFORMANCE BLUEPRINT	4
2.2 COPYING THE NECESSARY FILES.....	4
IBM COGNOS TM1 CONTENT.....	5
3.1 CONFIGURE A NEW IBM COGNOS TM1 SERVER INSTANCE	5
3.2 TESTING THE NEW IBM COGNOS TM1 SERVER INSTANCE.....	8
3.3 SETTING UP THE CONTRIBUTOR APPLICATION.....	10
IBM COGNOS 8 BI CONTENT.....	16
4.1 CREATE THE BI DATA SOURCES	16
4.2 CREATE THE METRIC STUDIO DATA SOURCE AND IMPORT THE BI DEPLOYMENT.....	20
4.3 TESTING IBM COGNOS DASHBOARD CONTENT	28



Blueprint Overview

This document explains the content and provides installation steps for a web-based solution reporting for the Branch Performance Blueprint.

IBM Cognos Blueprints are pre-defined data, process, and policy software models developed in partnership with leading academic institutions to address specific business process problems. They are essentially “quick-start” data models that IBM Cognos customers can download and implement at no extra cost.

Using the Blueprint with your IBM Cognos performance management system will enable users to clearly identify strategic performance and track it in a consistent, logical manner. It also provides a simple yet powerful way to monitor different Metrics and KPIs to better evaluate and take actionable items to increase performance.

Prerequisites

1. Cognos BI 8.4 SP1 or later
2. IBM Cognos 8.4 Metrics Server
3. MS SQL Server 2005 or higher
4. Cognos Supported database to house the Metric Studio content as well as the Analytics Content
5. This blueprint uses the same naming convention as the previous EP version of the Branch Performance Blueprint. As a result, the two versions cannot co-exist unless the database, datasources and folder names are altered to prevent conflict.

Blueprint Contents

1. **Branch Performance Blueprint.zip**
This is the entire file structure for the BI deployment, Framework Manager Model and graphics with a categorized folder structure to house the extracted files.
2. **Branch Performance BI Deployment.zip**
This is the BI Deployment file consisting of reports and portal pages specific to this Blueprint.
3. **Branch Performance Scorecard.zip**
This is the Metric Studio Deployment file containing the Scorecards and data for the Metric Studio Application.
4. **Branch Performance Blueprint Setup.pdf**
Description of the necessary files and steps needed to setup both environments for the Planning and BI portions of the Blueprint.
5. **Branch Performance Images.zip**
Images required when rendering dashboards and reports.
6. **Branch Performance.zip**
This file is the Contributor Deployment file which will be imported through the TM1 Administration user interface.



Making Content Files Available for Each Application

2.1 Unzipping the Branch Performance Blueprint

Unzipping the '**Branch Performance Blueprint.zip**' file will create the following directories:

Name	Size	Type	Date Modified
Deployment File - Reports		File Folder	6/28/2010 2:49 PM
Documentation		File Folder	6/28/2010 12:27 AM
Metadata		File Folder	6/28/2010 1:08 AM
Graphics, Files, etc		File Folder	6/28/2010 2:52 PM
TM1 Application		File Folder	6/28/2010 3:06 PM
TM1 Application Shortcut and Deployment		File Folder	6/28/2010 12:58 AM
Data		File Folder	6/28/2010 3:07 PM

* We will reference these directories, which store the pertinent files.

2.2 Copying the Necessary Files

1. Copy the **Branch Performance BI Deployment.zip** file from the '**Deployment File – Reports**' folder to the **<IBM Cognos 8 install location>\deployment** folder.

Note: Depending upon the configuration, location of the deployment folder may be setup on a different server, confirm the location with the BI administrator.

2. Unzip the **Branch Performance Scorecard.zip** file from the '**Deployment File - Reports**' folder. Move the **Branch Performance Scorecard** folder to the **<install directory>\deployment** folder

3. Unzip the **Branch Performance Images.zip** file from the '**Graphics, Files, etc**' folder and copy the "manhattan.gif" file into **<installation directory>\webapps\p2pd\WEB-INF\cmm\images\diagrams** folder, then copy the remaining image files into **<installation directory>\webcontent\samples\images**, if the images folder does not exist, create it

Note: The destination folder used in the above step is customized per your environment. For multi-server installation the images would need to be copied over the Gateway servers. Verify with the BI Administrator the architecture of the BI environment before copying the files.

4. Unzip the "**Branch Performance.zip**" file from the '**TM1 Application**' and copy the folder to **<YourIBMCognosTM1 Blueprint Folder>**
5. From the **Data** folder unzip all files and move *.mdf and *.ldf files to a designated data file location. (i.e., **<SQL Server install location>\MSSQL1\MSSQL\Data**).
6. Attach database in SQL Server Enterprise Manager (2005) or Management Studio (2005) by right-clicking 'Databases' (under server name) and choosing 'Attach.' Locate and choose the *.mdf files as your sources.



IBM Cognos TM1 Content

The following steps will navigate through the steps required to create a new IBM Cognos TM1 Server instance and configure the objects needed for the IBM Cognos TM1 content to work properly.

3.1 Configure a new IBM Cognos TM1 Server instance

The following steps provide a quick guideline on how to get a new IBM Cognos TM1 server instance, however a more detailed explanation can be found in the IBM Cognos TM1 Server Administration document.

To configure a new IBM Cognos TM1 Server instance the following files are required:

1. Tm1s.cfg
2. Tm1s.lic
3. A shortcut to execute tm1s.exe using the Blueprint content as the working directory.

Copy the tm1s.lic File

The **tm1s.lic** file is included in your IBM Cognos TM1 installation. This file can be copied from <YourIBMCognosTM1_DirectoryInstall>/bin folder. The content of this file is similar to:

```
DATABASE_TYPE=TM1 PROPRIETARY
CLASS=505
LICENSE=<YourLicense>
MAX_USERS=99999
MAX_READONLY_USERS=99999
EXPIRE_DT=<YourExpiryDate>
LOCATION=
ORGANIZATION=<YourCompany>
LICENSOR=
INSTALL_ID=
PRODUCT= .....
```

Copy the **tm1s.lic** file to '<YourIBMCognos TM1 Applications Folder>\BranchPerformance\objects' to create a new server instance.



Modify the Tm1s.cfg server configuration file

From the '<YourIBMCognos TM1 Applications Folder>\BranchPerformance\objects' folder, modify the 'tm1s.cfg' file.

This file needs to be modified to **point to the IBM Cognos TM1 Admin Server on your environment**. The file is provided as:

```
[TM1S]
ServerLogging=F
SecurityPackageName=Kerberos
IntegratedSecurityMode=1
UseSSL=T
ServerName=Branch Performance
DataBaseDirectory='<YourIBMCognosTM1 Blueprint Folder>\BranchPerformance\objects'
AdminHost=YourAdminHost
PortNumber=90001
ClientMessagePortNumber=
Language=ENG
SaveTime=
DownTime=
ProgressMessage=True
AuditLogOn=F
AuditLogMaxFileSize=100 MB
AuditLogUpdateInterval=60
DefaultMeasuresDimension=T
```

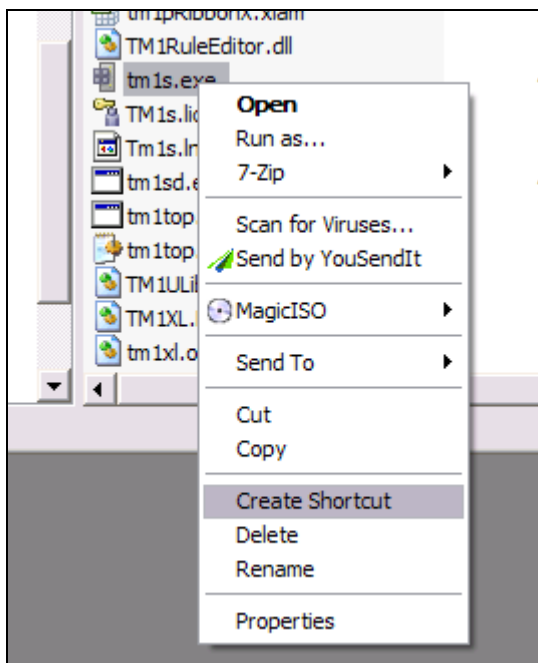
The parameters highlighted in **red** need to be reviewed and modified accordingly for your company's environment. If there is certainty that the default TCP ports above are not being used, they can be left unchanged.

The "AdminHost" parameter would need to be changed to reflect the IBM Cognos TM1 Admin Sever host setting in your environment.

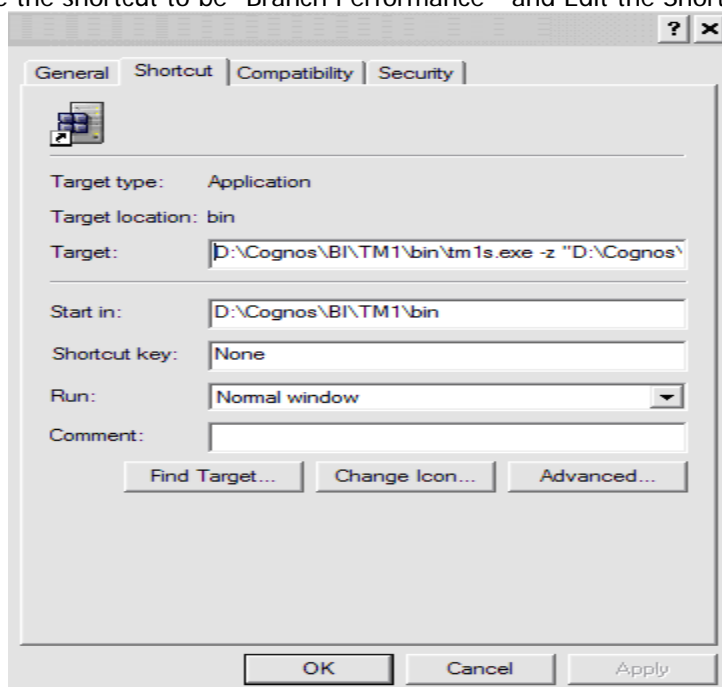


Modify/Create the Server Shortcut

Navigate to '<YourIBMCognosTM1_DirectoryInstall>/bin' folder; create a shortcut to tm1s.exe.



1. Copy the shortcut created to '<YourIBMCognos TM1 Applications Folder>\BranchPerformance\objects'
2. Rename the shortcut to be "Branch Performance" and Edit the Shortcut Properties





The “Target” property of the shortcut needs to be changed to read:

```
<YourIBMCognosTM1InstallFolder>\bin\tm1s.exe -z “  
<YourIBMCognos TM1 Applications Folder>\objects”
```

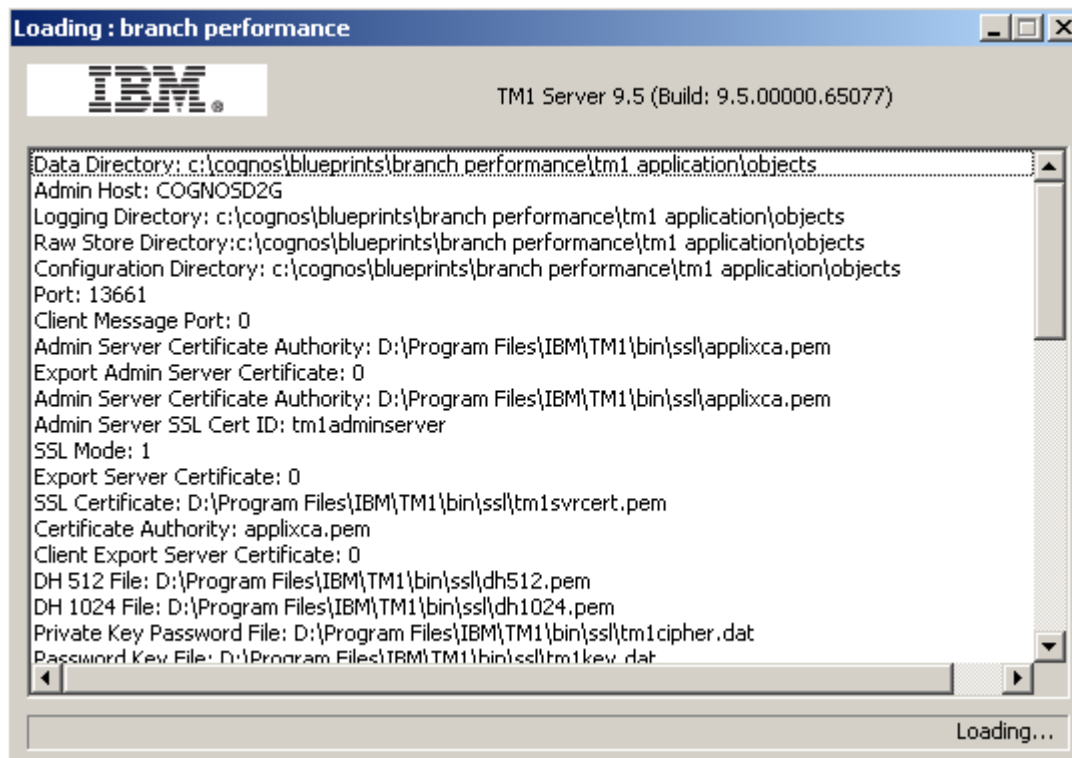
Notice that the last portion of the command is the folder where the IBM Cognos TM1 content was extracted to.

Click onto **OK** to save the changes.

3.2 Testing the new IBM Cognos TM1 Server instance

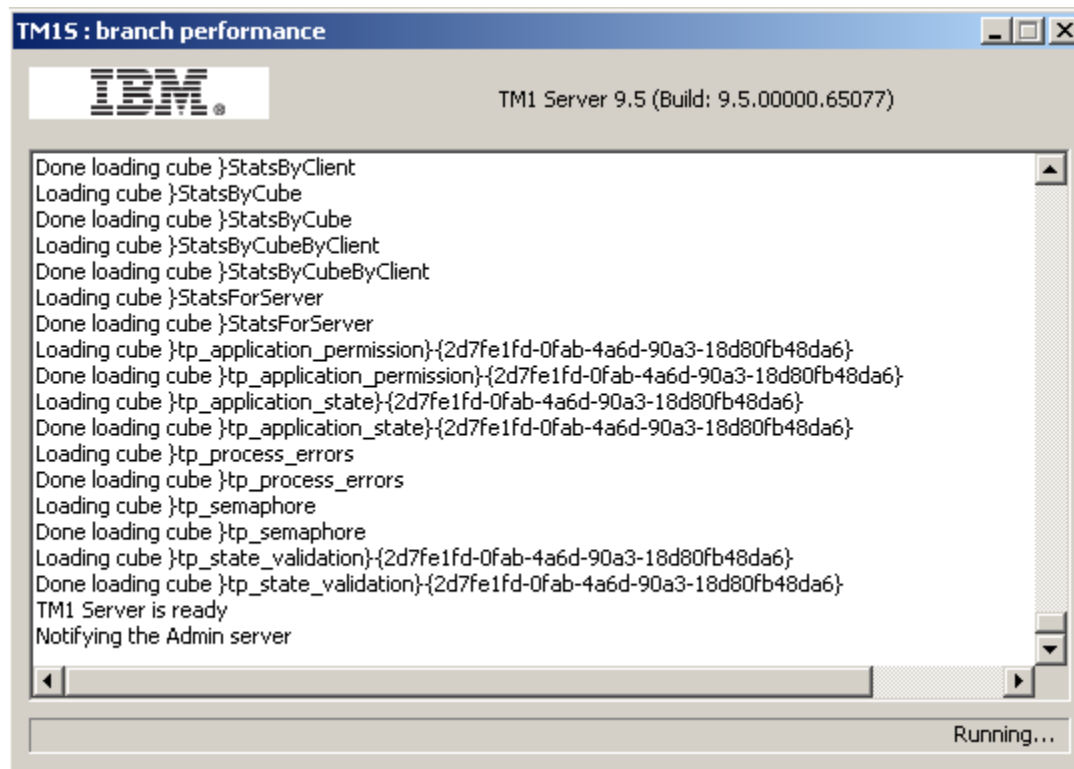
From the ‘<YourIBMCognosTM1 Blueprint Folder>\objects’ folder, double click the ‘Branch Performance’ shortcut.

The following dialog will appear:





After all cubes have been loaded, the lower right corner of the dialog will display **Running...**:





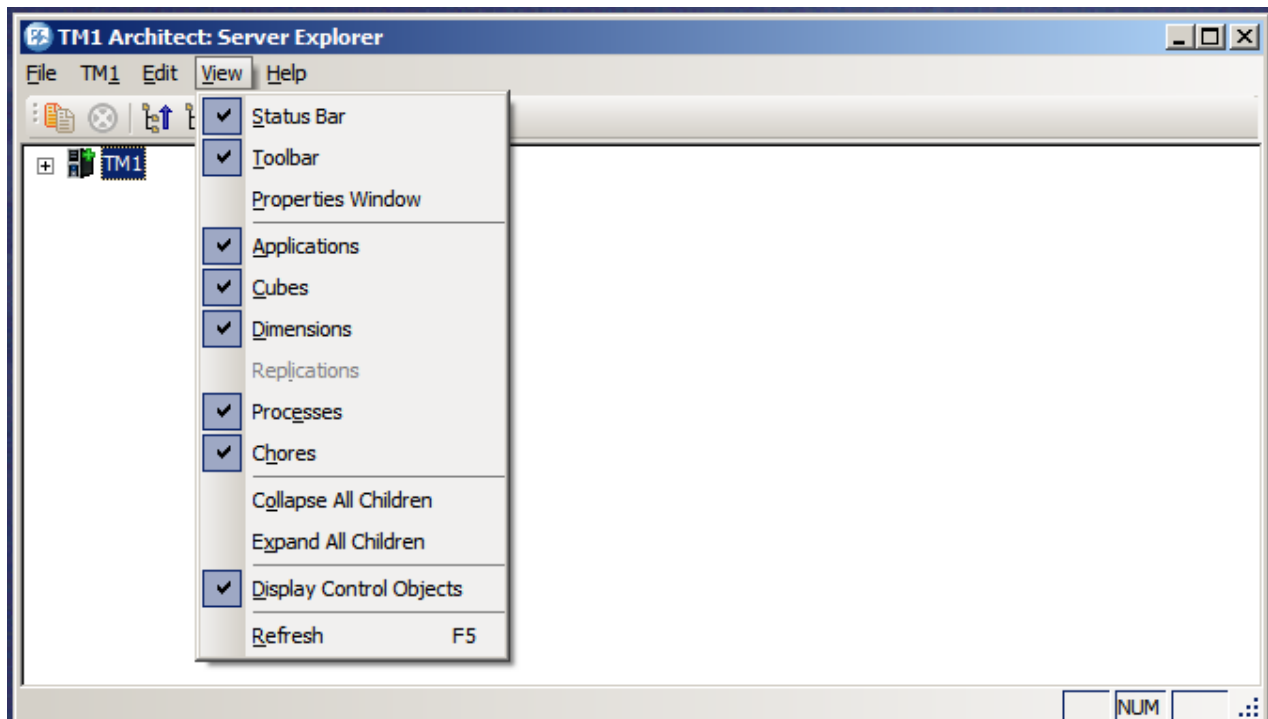
Once the newly created IBM Cognos TM1 Server instance is up and running, Architect and/or IBM Cognos TM1Web can be used to navigate through the content.

3.3 Setting Up the Contributor Application

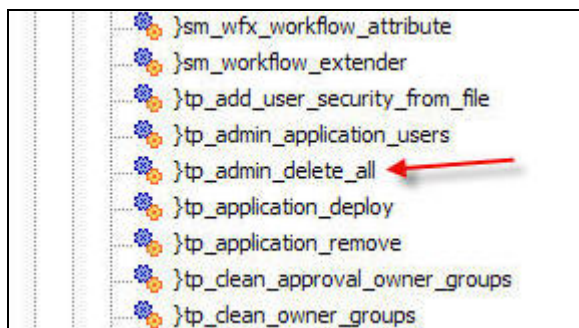
3.3.1 Open TM1 **Architect**

3.3.2 Double click the **Branch Performance** application and **Login** as User/Password: **admin/apple**

3.3.3 Click on the Menu Item – View and validate Display Control Objects is checked

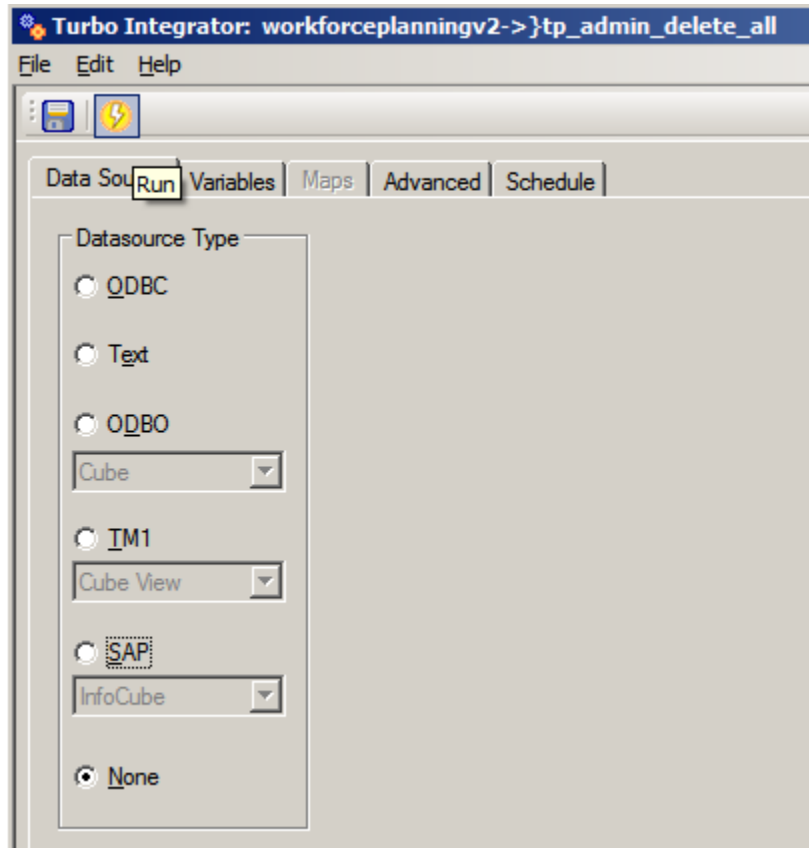


3.3.4 Expand Processes node and double click }tp_admin_delete_all. Accept all defaults.





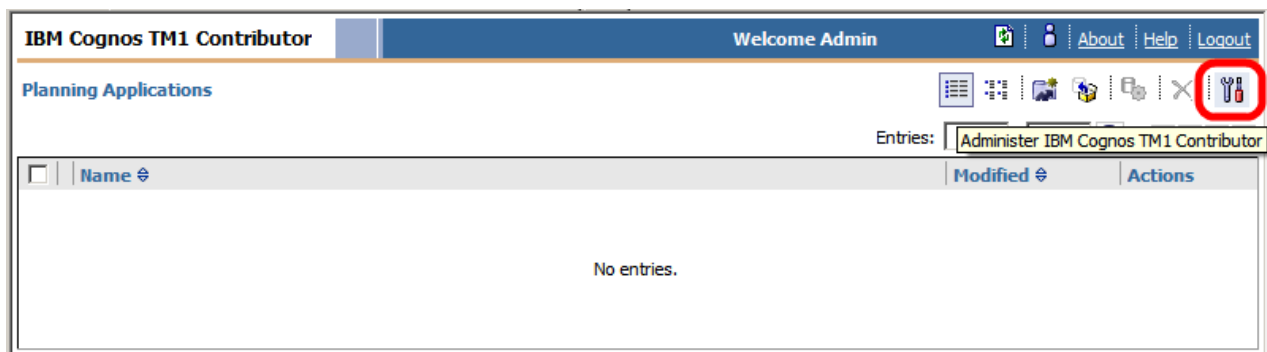
3.3.5 Click **run** and **OK**



3.3.6 Copy the "Branch Performance.zip" file from the "TM1 Application Shortcut and Deployment" folder into **<YourIBMCognosTM1 Blueprint Folder>\BranchPerformance\Contributor**, if the "Contributor" folder does not exist, create it

3.3.7 Launch your TM1 Contributor environment, for example, **http://yourTM1_Server:<Port>/pmpsvc/** and Login as User/Password: admin/apple

3.3.8 Click **Administer IBM Cognos TM1 Contributor**



3.3.9 Click **Add...** under the Server Names: section

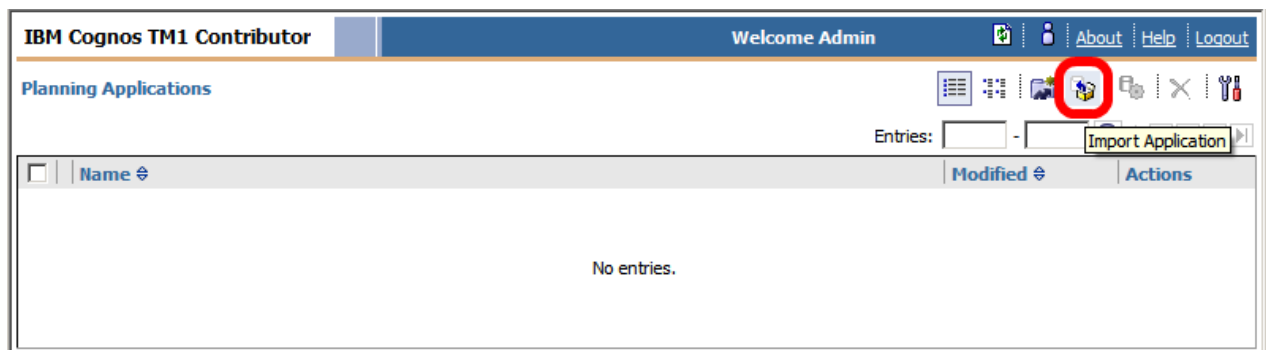


3.3.10 Enter your TM1 Admin Host and click the **Refresh** icon

3.3.11 For the Server Name: select '**branch performance**' and click **OK**

3.3.12 Click **OK**

3.3.13 Click the **Import Application** icon



3.3.14 Choose *yourTM1ServerName*:Branch Performance for the TM1 Server

3.3.15 Browse to '**YourIBMCognosTM1 Blueprint Folder>\BranchPerformance\Contributor**' and select the "**Branch Performance.zip**"

3.3.16 **Uncheck** Import application security and Click **Import**



Application Import

Specify your import file and import settings.

TM1 Server:
 TP-mwilcox.ent.ad.cognos.com:branch performance

Application file:
 C:\Master\C8 Platform\TM1\Blueprint Models\Branch Performance\xml\Branch Perform Browse...

☐ Import application security
☒ Import application properties

Import Cancel

3.3.17 Click the **Activate Application** icon



3.3.18 Now click on the icon to Manage rights for Application, Select Node as Fashion Branch, Select Group as FBranch and Define Security as Submit and click the Add button to add the permissions

IBM Cognos TM1 Contributor Welcome Admin

Allow Reviewer Edit

Node	Group	Right	Review Depth	View Depth
Fashion Branch	FBranch	Submit	All	All

Add Rights

1. Select Node

- 42nd Street
- Chelsea Branch
- Chinatown Branch
- Delancy Street
- Downtown Broadway
- East Village Branch
- Empire State Building
- Fashion Branch**
- Grand Central
- Herald Square
- Madison Avenue
- One Penn Plaza

Find Node

2. Select Group

- ADMIN
- DataAdmin
- FBranch**
- SecurityAdmin

Find Group

3. Define Security

Right: **Submit**

Review Depth: **All**

View Depth: **All**

Add



3.3.19 All Logons User/Password for the Branch Performance applications are:

Admin/apple

Fbranch/*BLANK PASSWORD*



3.3.20 Click the Branch Performance link to test, if installed correctly it should resemble the following

IBM Cognos TM1 Contributor Welcome admin [About](#) [Help](#) [Logout](#)

Contributions

- Reviews
 - US Branch Banking
 - Northeast
 - NY Metro
 - BOROUGHGS
 - CENTRAL NJ - SUMMIT
 - EASTERN LONG ISLAND
 - HUDSON/ESSEX
 - MANHATTAN
 - 42nd Street
 - Chelsea Branch
 - Chinatown Branch
 - Delancy Street
 - Downtown Broadway
 - East Village Branch
 - Empire State Building
 - Fashion Branch
 - Grand Central
 - Herald Square
 - Madison Avenue
 - One Penn Plaza
 - Park Avenue
 - Soho Branch
 - NORTH BERGEN
 - TRI COUNTY NEW JERSEY
 - WESTCHESTER/STHN FAIRFIE
 - WESTERN LONG ISLAND
 - Northwest
 - Southeast
 - Southwest

You are a reviewer or contributor for:

Name	State	Ownership	Reviewer	Last Data Commit
MANHATTAN	Incomplete	None	ADMIN	Never committed

Which consists of:

Name	State	Ownership	Reviewer	Last Data Commit
MANHATTAN (All)	Incomplete		ADMIN	
42nd Street	Not Started	None	ADMIN	Never committed
Chelsea Branch	Not Started	None	ADMIN	Never committed
Chinatown Branch	Not Started	None	ADMIN	Never committed
Delancy Street	Not Started	None	ADMIN	Never committed
Downtown Broadway	Not Started	None	ADMIN	Never committed
East Village Branch	Not Started	None	ADMIN	Never committed
Empire State Building	Not Started	None	ADMIN	Never committed
Fashion Branch	Work In Progress	Fbranch	ADMIN	Never committed
Grand Central	Not Started	None	ADMIN	Never committed
Herald Square	Not Started	None	ADMIN	Never committed
Madison Avenue	Not Started	None	ADMIN	Never committed

Workflow Detail for MANHATTAN

Current state: ! Incomplete
At least one item belonging to this item is **Not started**, and at least one other item is in a state of **Work in progress**, **Locked**, or **Ready**. Data in this state was aggregated. The **Incomplete** state applies only to review approval items.

Changed time: February 8, 2010 9:27:09 PM CST
Changed by: Fbranch
Viewed: no
Reviewed: no

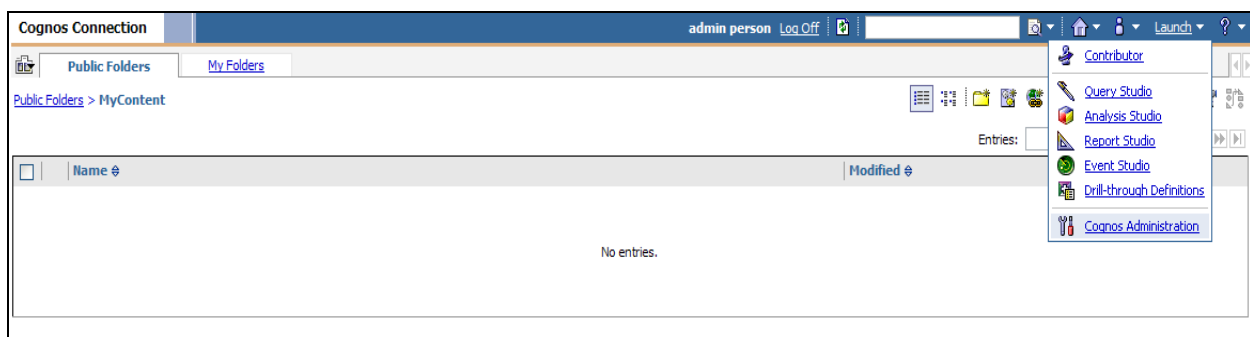


IBM Cognos 8 BI Content

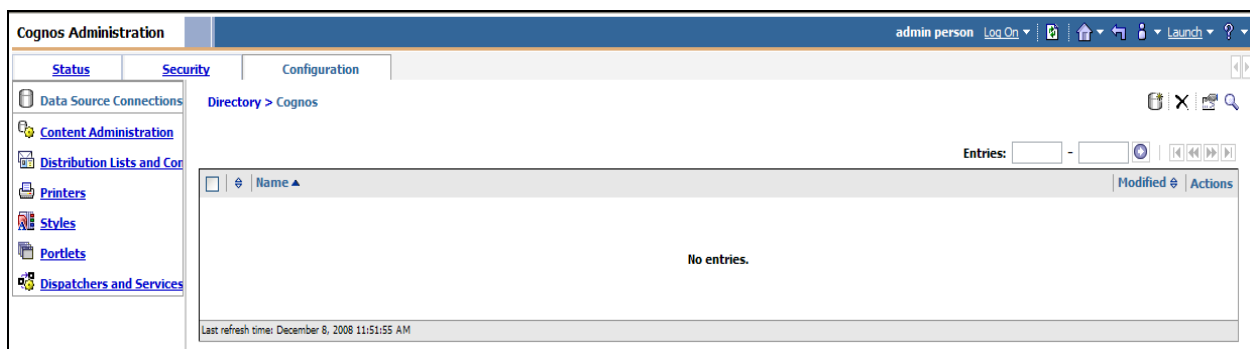
The following steps will navigate through the steps required to configure the objects needed for the IBM Cognos BI content to work properly.

4.1 Create the BI data sources

1. Open a browser window and go to **IBM Cognos Connection**. If Authentication is setup, login with a directory **Administrator** user
2. Click on to **Launch** and select **IBM Cognos Administration**

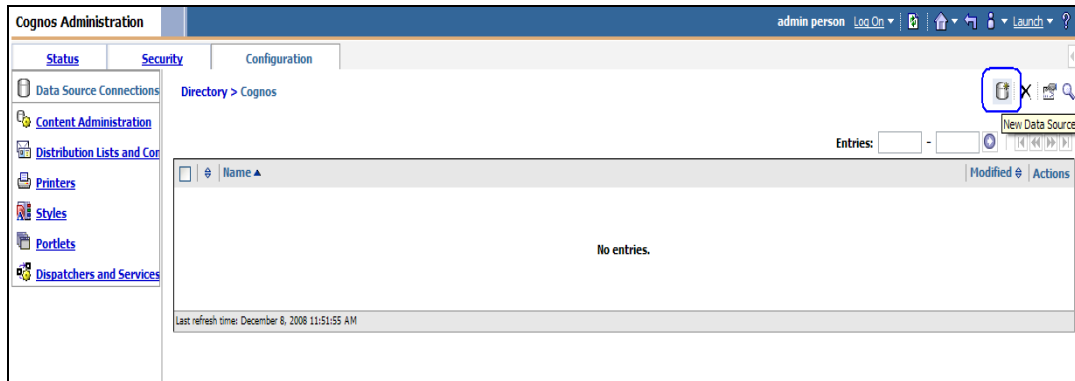


3. Click on the **Configuration tab**; make sure 'Data Source Connections' is selected

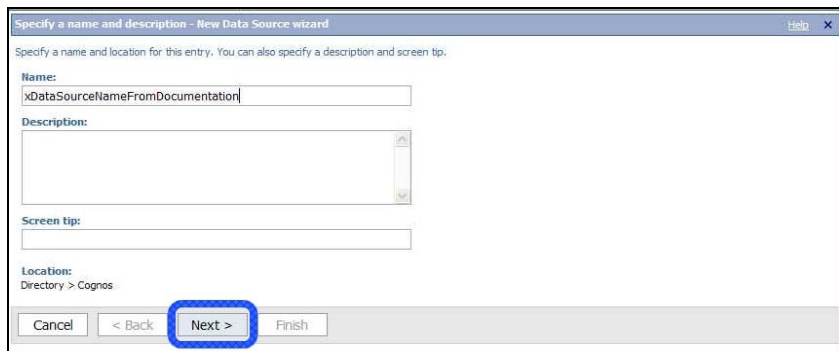




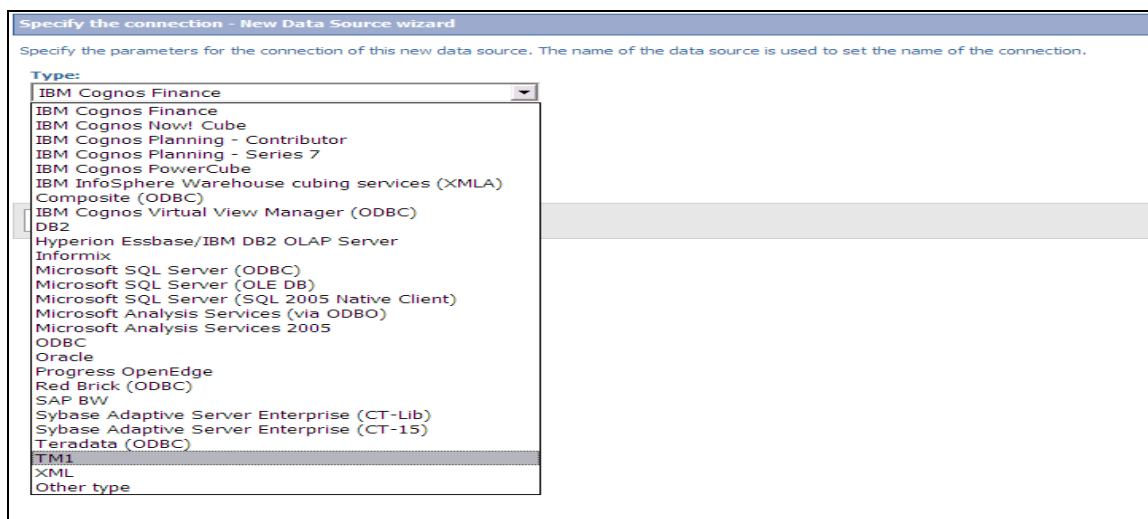
4. Click the Data Sources tab then **click the New Data Source Icon** 



5. Name the Data Source exactly as: **'Branch Performance Blueprint'** then click **Next >**



6. Select the **'TM1'** option; then click **Next >**





7. Fill out the parameters for the TM1 connection then click [Test the connection...](#)

Specify the TM1 connection string - New Data Source wizard

Edit the parameters to build a TM1 connection string.

Administration Host:
localhost

Server Name:
MyServerName

Signon
Select whether a user ID and password is required in the connection string and, if so, whether to create a signon.

☒ User ID
☐ Password
☒ Create a signon that the Everyone group can use:

User ID:
xCognosDatabaseUser

Password:

Confirm password:

Testing
[Test the connection...](#)

8. Click **Test** to verify the connection is setup correctly

Test the connection - New Data Source wizard

Test the parameters that make up the database connection.

Connection string:
^User ID=?Password?;LOCAL;OL;DBInfo_Type=MS;Provider=SQLEDB8;User ID=%s;Password=%s;Data Source=xDatabaseServerName;Provider_String=Initial Catalog=xBlueprint;PublishTableName;@COLSEQ=

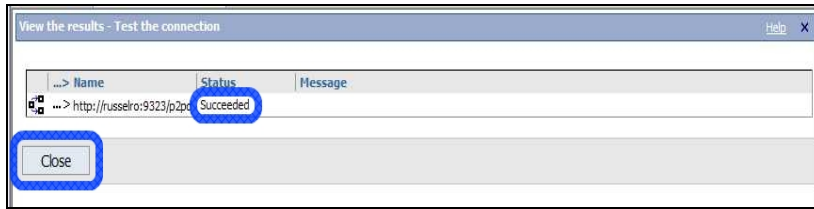
Test

Dispatcher:
http://russelro:9323/p2pd (Configuration)

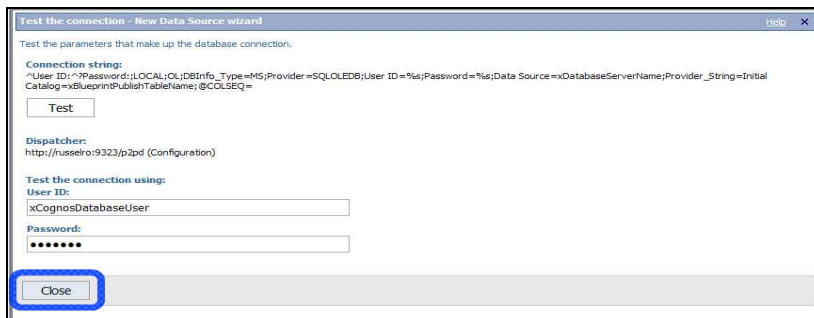
Test the connection using:
User ID:
xCognosDatabaseUser
Password:

Close

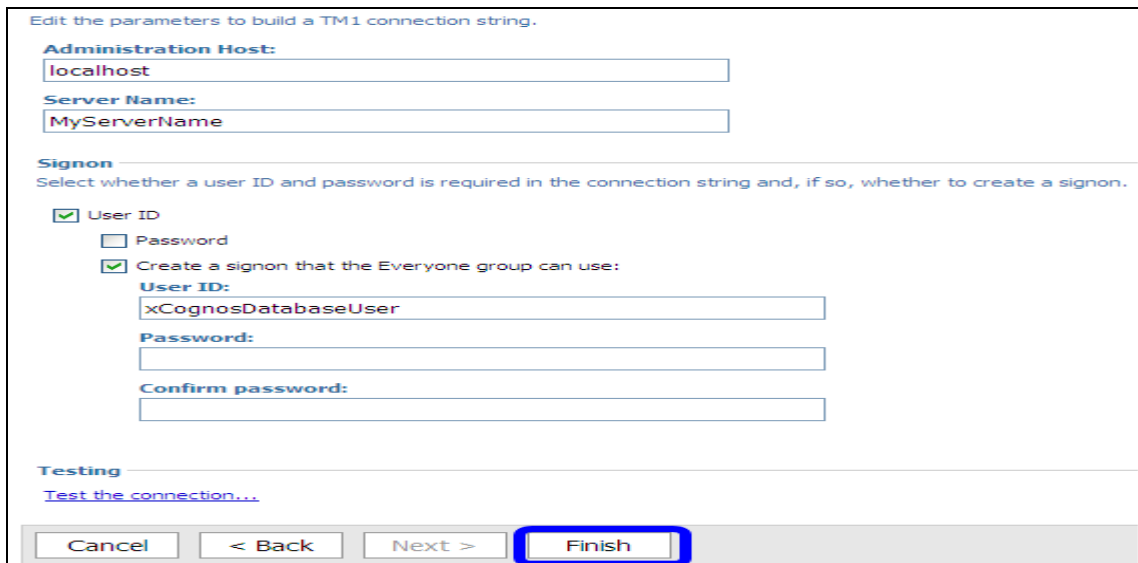
- 9.



10. Click **Close** again



11. Click **Finish** to add the new data source.



12. Repeat steps 1 through 4 above to create a new Data Source.

13. Name the Data Source exactly as: '**BranchDW**' then click **Next >**

14. Select the '**Microsoft SQL Server (OLE DB)**' option; then click **Next >**

15. Continue creating the Data Source by pointing to the **BranchDW** database. Test the connection to ensure it is working before proceeding. Minimize.

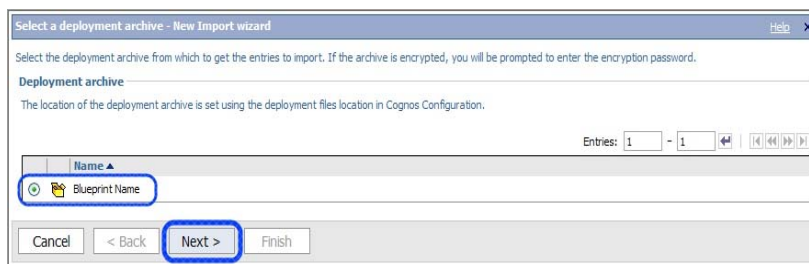


4.2 Create the Metric Studio data source and Import the BI Deployment

1. Using a supported database, create a new database named **Branch Performance Scorecard**. If using MS SQL Server, use collation Latin1_General_CI_AI
2. Repeat steps 1 through 4 above in Section 4.1 to create a new Data Source.
3. In Cognos Administration add Data Source Name: **Branch Performance Scorecard** → Database: **Branch Performance Scorecard**
4. Open IBM Cognos Connection and Select **Launch -> Content Administration**
5. Select the **Configuration** tab
6. Select **Content Administration** link



7. Click the **New Import** icon
8. Select the import package named '**Branch Performance BI Deployment**' then click **Next >**





9. Verify the Name is 'Branch Performance BI Deployment' then click **Next >**

Specify a name and description - New Import wizard

Specify a name and location for the deployment specification. You can also specify a description and screen tip.

Name:
Blueprint Name

Description:

Screen tip:

Location:
Administration
Select another location...

Cancel < Back **Next >** Finish

10. Specify the options and **DO NOT** check 'Disable after import' then click **Next >**

Select the public folders content - New Import wizard

Select one or more packages or folders and select the options to include in the import.

Public folders content

Change the target name of packages and folders if you do not want to overwrite them in the target with packages and folders from the deployment archive. Disable the packages and folders if you do not want users to access them in the target after the import.

Entries: 1 - 1

<input checked="" type="checkbox"/>	Name	Target name	<input type="checkbox"/> Disable after import	In target content	Modified
<input checked="" type="checkbox"/>	Blueprint Name	Blueprint Name	<input type="checkbox"/>		

Options

☐ Include report output versions

Conflict resolution:

☐ Keep existing entries

☒ Replace existing entries

☐ Include run history

Conflict resolution:

☐ Keep existing entries

☒ Replace existing entries

☐ Include schedules

Conflict resolution:

☐ Keep existing entries

☒ Replace existing entries

Cancel < Back **Next >** Finish

11. Specify the general options, select 'The user performing the import' and 'New entries only' then click **Next >**

Specify the general options - New Import wizard

Specify the options applicable to all the entries in the import.

Access permissions

☐ Include access permissions

☐ Apply to new entries only

☒ Apply to new and existing entries

External namespaces

☐ Include references to external namespaces

☒ Do not include references to external namespaces

Entry ownership

Set the owner to:

☐ The owner from the source

☒ The user performing the import

Apply to:

☒ New entries only

☐ New and existing entries

Cancel < Back **Next >** Finish



12. Review the summary options selected then click **Next >**

Review the summary - New Import wizard

The Import wizard is ready to import into the target environment.
If you want to change any settings, click Back.
If you are satisfied with the settings and want to select whether to run, schedule, or save only, click Next.

Deployment specification

Name: Blueprint Name Description:

Deployment archive

Name: Blueprint Name

Public folders content

Name	Target name	Disable after import	In target content	Modified
Blueprint Name	Blueprint Name			

Options:

Include report output versions
Replace existing entries
Include run history
Replace existing entries
Include schedules
Replace existing entries

Directory content

Cancel < Back **Next >** Finish

13. Choose 'Save and run once' then click **Finish**

Select an action - New Import wizard

Select whether you want to run, schedule, or save only, when the wizard closes.

Action:

☒ Save and run once
☐ Save and schedule
☐ Save only

Cancel < Back Next > **Finish**

14. Specify the time to run the import select 'Now' and 'Keep the existing report specifications versions' then click **Run**

Run with options - Blueprint Name

Select when you want to run this import.

Time:

☒ Now
☐ Later: May 22, 2008 2 : 48 PM

Content:

☒ Content store
☒ Directory
☒ Cognos namespace
☒ Public Folders
☒ Blueprint Name

Report specification upgrade

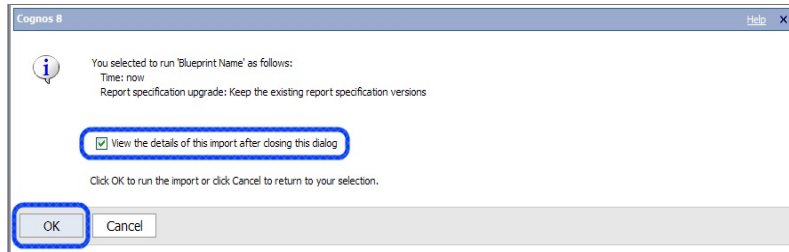
You may want to keep existing report specification versions for compatibility with existing applications.

☐ Upgrade all report specifications to the latest version
☒ Keep the existing report specification versions

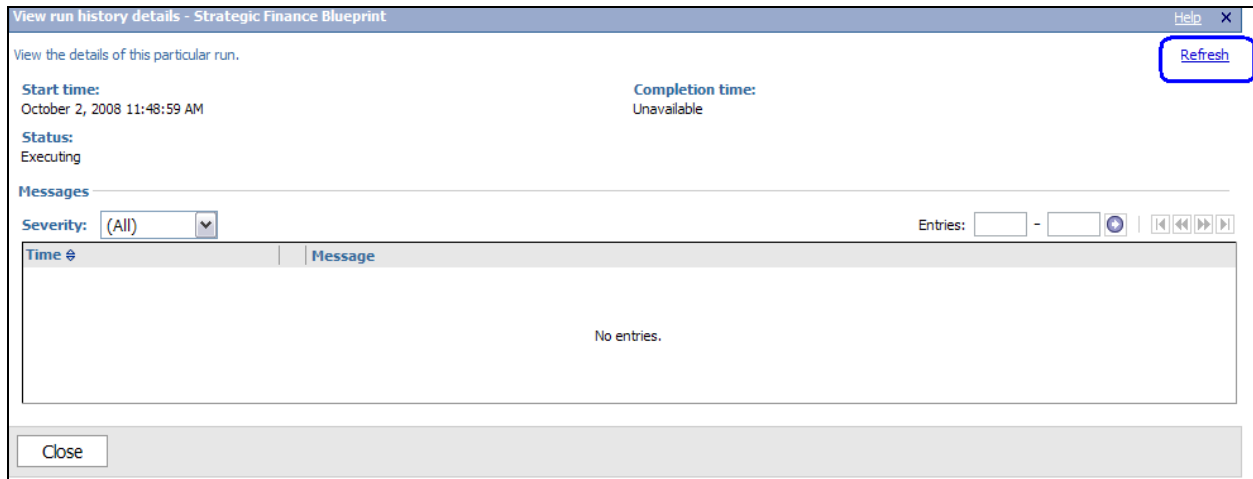
Run Cancel



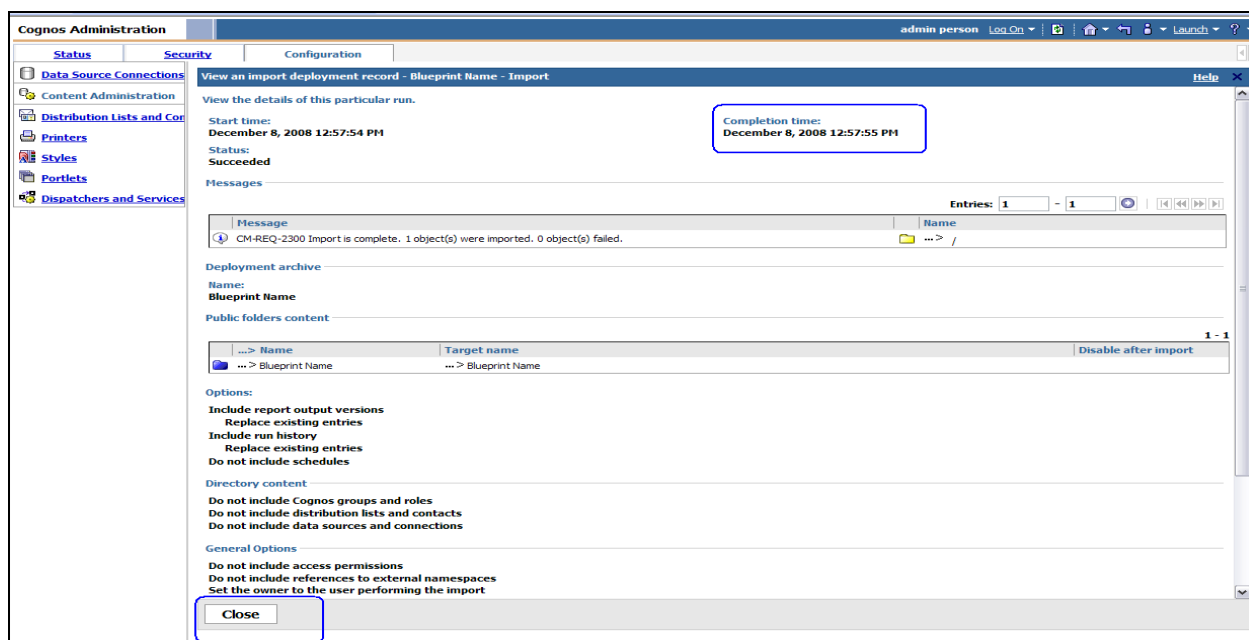
15. Check 'View the details of this import after closing this dialog' then click **OK**



16. Initial view of the import deployment record will be blank. Press the 'Refresh' hyperlink.



17. If the deployment import has not finished click 'Refresh' again until it shows a completion time, then click **Close**.





18. After validating that the import ran successfully, navigate to **Cognos Connection Public Folders**
19. Navigate the to **Branch Performance Blueprint/Packages** folder
20. Click the **Branch Performance Scorecard link** to launch the Metrics package wizard
21. Click **Next>** to advance the wizard
22. Leave the default selection as Use the default deployment location and click **Next>**
23. Select Standard calendar and click **Next>**
24. Select the checkbox options for **Years, Quarters (Three months) and Months** and click **Next>**
25. Choose the default Start date as **Jan 1, 2010** and **Add 2 Years** in the textbox below and click **Next>**
26. Click **Initialize** to create the calendar data
27. After completing the Initialize chore choose to **open the Metric Studio package**
28. Click **Tools** and **Import sources**, now click the **New...** link to add a new import source



29. On the Tools – Import Sources screen select the **New...** link to add a New... import source
30. If you receive a message dialog indicating the Default source cannot be found just click OK and we will disable it after creating the new Import Source
31. Select **English**, type the Name as **Branch Performance Scorecard** and select Import data from: **Metrics import directory**



32. Choose the option for the **Branch Performance Scorecard** folder, select the File format: as **8.4.2** and Character set encoding: as **Baltic (Windows-1257)** then click **OK**

Metric Studio Bob Russell - Cognos Innovation Center Log Off | Home | Launch ?

Tools - Import sources

Edit the properties of the import source.

Language:
The name is shown for the selected language.
English

Name:
Branch Performance Scorecard

Import data from:
☐ Metric store staging tables
☒ Metrics import directory

Identification code:

* Required field

The metric import directories are located in the metric deployment location.

Name:
☒ Branch Performance Scorecard

☐ Include sub-directories

File format:
Specify the version of the files you are loading.
8.4.2

Character set encoding:
Specify the character set that supports the languages you are importing.
☒ Baltic (Windows-1257)
☐ Other:

OK Cancel

33. On the Tools – Import sources choose the option to **Exclude from the import the Default Import Source** and click **OK**

Metric Studio Bob Russell - Cognos Innovation Center Log Off | Home | Launch ?

Tools - Import sources

Metric deployment location:
Specify the metric deployment location you wish to use for this data store. The metric deployment location sets the location for the import sources and it must be accessible by all Metric Studio data integration services.
This package is configured to use the Content Manager default deployment location.
[Change the deployment location...](#)

Import sources:
Specify the import sources for this metric package. The import sources contain the data which will be imported for this metric package.
Select exclude if you do not want to import data from an import source.

<input type="checkbox"/>	Name	<input type="checkbox"/> Exclude from the import	Actions
<input type="checkbox"/>	Default Import Source	<input checked="" type="checkbox"/>	
<input type="checkbox"/>	Branch Performance Scorecard	<input type="checkbox"/>	

Entries: 1 - 2

New... Delete

OK Cancel

34. Now click **Tools** and click **Metric maintenance**

Metric Studio Bob Russell - Cognos Innovation Center Log Off | Home | Launch ?

Watch List

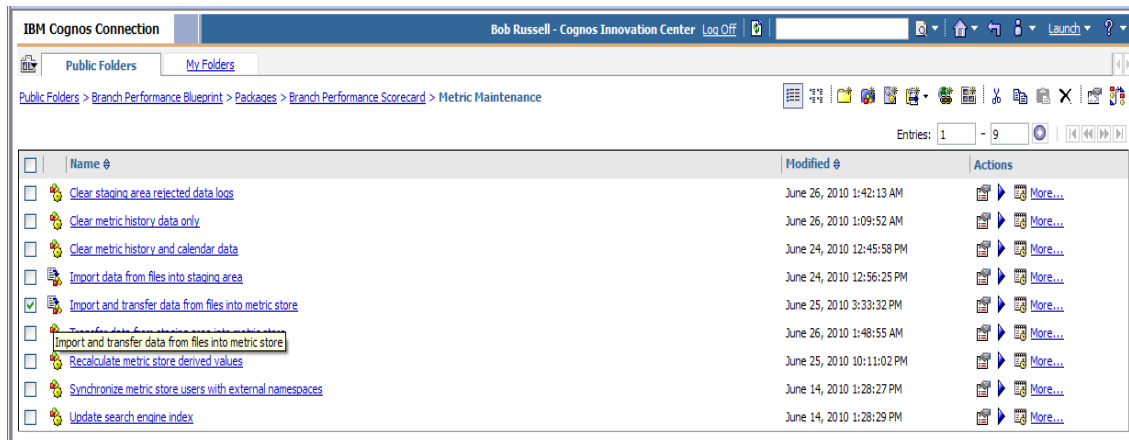
No filter No grouping

<input type="checkbox"/>	Name	Actual	Target	Variance	Variance %
No entries.					

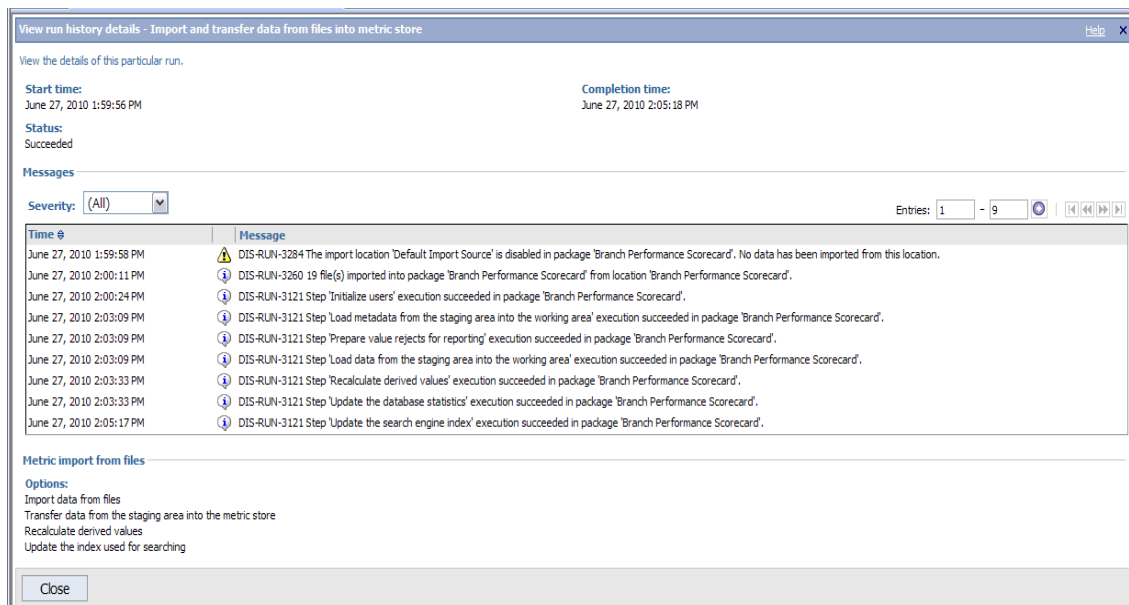
Business calendar
 Import and data calculation settings
 Import sources
Metric maintenance
 Metric names
 Navigation options
 Security
 Status indicators
 Qualifiers
 Units
 Default display settings



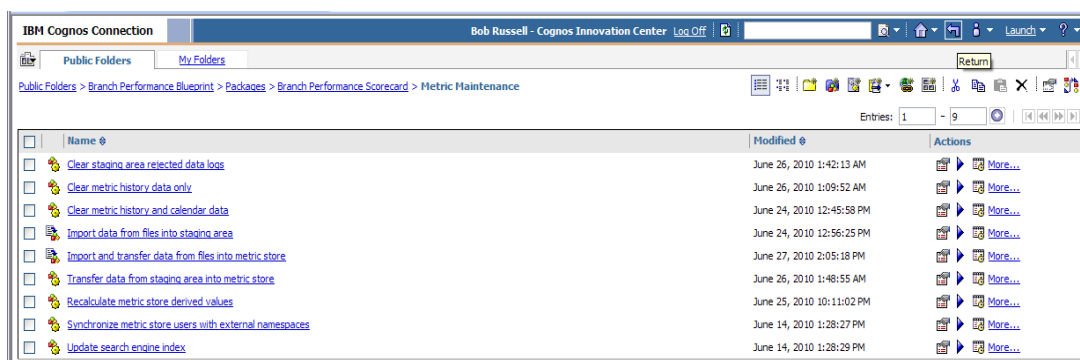
35. Click the link to **Import and transfer data from files into metric store**



36. After the task completes click the link to **View the run details** to validate the import ran successfully your screen should resemble to following screen capture below and then click **Close**



37. Now click the **Return** icon to validate the data has seeded correctly





38. By navigating through the **Scorecards** structure and choosing the **MANHATTAN** scorecard your data should resemble the capture below

The screenshot shows the Metric Studio interface with the following components:

- Left Panel:** A tree view showing the hierarchy of scorecards. The 'MANHATTAN' scorecard is selected under the 'Branch Performance Scorecard'.
- Top Panel:** Displays the current scorecard path: 'Scorecards > US Branch Banking > Northeast > NY Metro > MANHATTAN'.
- Main Table:** A table with 7 columns: Name, Actual, Target, Variance, Variance %, and Time Period. It lists 12 metrics for the MANHATTAN scorecard.

Name	Actual	Target	Variance	Variance %	Time Period
MANHATTAN Efficiency Ratio	23.85%	8,856.53%	-8,832.69%	99.73%	Dec 2011
MANHATTAN Elite Customers	0%	12%	-12%	100%	Dec 2011
MANHATTAN % Account Growth	3.24%	7.50%	-4.26%	56.79%	Dec 2011
MANHATTAN Balance Retention	98.31%	95.00%	3.31%	3.49%	Dec 2011
MANHATTAN Revenue	23,965,513.12	17,774,632.37	6,190,880.75	34.83%	Dec 2011
MANHATTAN New Accounts	10,148	9,640	507	5%	Dec 2011
MANHATTAN Number of FTE's	542.2	39,902.2	-39,360.1	98.6%	Dec 2011
MANHATTAN Net Income	23,965,513.12	13,586,733.12	10,378,780.00	76.39%	Dec 2011
MANHATTAN Net Interest Margin	22,295,925.81	16,376,408.80	5,919,517.01	36.15%	Dec 2011
MANHATTAN % Revenue Growth	2.66%	108.01%	-105.35%	97.54%	Dec 2011
MANHATTAN Profit Margin	18,250,420.37	13,023,519.95	5,226,900.42	40.13%	Dec 2011
MANHATTAN Customer Satisfaction	62%	85%	-23%	27%	Dec 2011

39. Now click the Return icon and to the Cognos Connection Public Folders area
40. Navigate to the Branch Performance Blueprint>Links folder and click the properties icon for the Branch Performance – Planning Contributor link
41. Change the link, if necessary to point at your TM1 Contributor environment, for example,
http://yourTM1_Server:<Port>/pmpsvc/
42. If the event links located in the Branch Performance Blueprint>Events>District Manager folder structure is invalid
43. Click the Run icon to launch to rerun the event and click the Run button then OK
44. From the Public Folders tab Navigate to Branch Performance Blueprint>Dashboards>District Manager>District Manager Portal Tabs and select the properties icon for the Welcome dashboard page
45. Click on the Page Style tab and uncheck both Hide title bars and Hide Edit buttons on the title bar and click OK
46. Click the Welcome dashboard page and click the properties icon for the Image Viewer entry at the top right
47. Validate the url path is pointing to your environment for the images virtual directory
48. Do steps 44 through 47 for the entry within Branch Performance Blueprint>Dashboards>Branch Manager>Branch Manager Portal Tabs Welcome dashboard page as well



4.3 Testing IBM Cognos Dashboard Content

Navigate to IBM Cognos Connection Public Folders. A new folder will appear named **'Branch Performance Blueprint'**, the content of this folder will display as:

Public Folders > Branch Performance Blueprint			
Name	Modified	Actions	
Dashboards	February 11, 2009 9:14:42 AM	More...	
Events	February 17, 2009 8:18:18 AM	More...	
Links	March 30, 2009 8:43:55 PM	More...	
Packages	March 15, 2010 12:26:06 PM	More...	
Reports	February 13, 2009 1:08:52 PM	More...	
Templates	February 13, 2009 12:26:17 PM	More...	

To test the content, from the **Dashboards** folder, click the **District Manager** folder and launch the **'District Manager Dashboard'**. The following screen should appear:

[Welcome](#)
[KPI](#)
[Market Share](#)
[Demographics](#)

District Manager Alerts

Customer Satisfaction Survey Results are in

No filter

Name	Actual	Target	Time Period
Profitability			
Efficiency Ratio -- MANHATTAN	2.37%	2.14%	Apr 2009
Net Income -- MANHATTAN	6.36M	5.20M	Apr 2009
Net Interest Margin -- MANHATTAN	68.19M	61.54M	Apr 2009
Profit Margin -- MANHATTAN	54.85M	49.49M	Apr 2009
Sales			
% Account Growth -- MANHATTAN	4.97%	7.50%	2009 Q2
% Revenue Growth -- MANHATTAN	2.20%	1.99%	Apr 2009
New Accounts -- MANHATTAN	10k	9k	Apr 2009
Revenue -- MANHATTAN	14.67M	13.23M	Apr 2009
Service			
Balance Retention -- MANHATTAN	99.94%	95.00%	Apr 2009
Customer Satisfaction -- MANHATTAN	81%	85%	2009 Q2
Elite Customers -- MANHATTAN	13%	12%	2009
Number of FTE's -- MANHATTAN	37.8	34.3	Apr 2009

Reports

Name
Demographics
Detail Reports
Profitability
Sales
Service

Links

Name	Actions
Branch Performance Planning Contributor	More...

Search: Full text and all fields

Advanced

Testing can then be performed on each of the reports listed in the Reports folder.