

DB2 Data Management Software

DB2 under Linux at Fujisawa Deutschland: Guaranteed without side effects.

Overview

■ The Challenge

Installation of a database for the mySAP® Business Intelligence solution; this database was also to be fully compatible with the existing SAP R/3® system

■ The Solution

Application: SAP R/3 4.5B

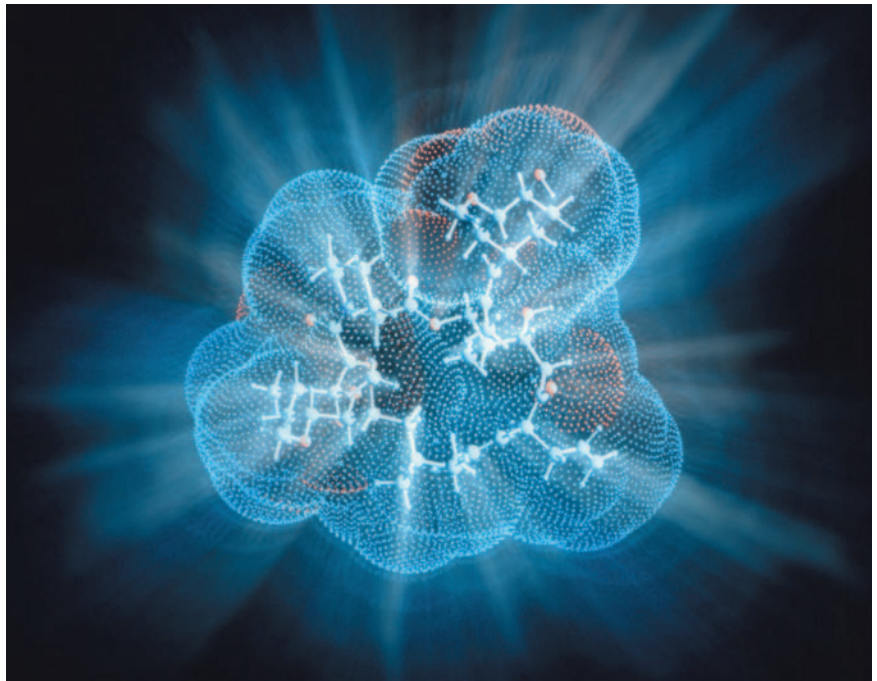
Software: Linux®, IBM DB2 Data Management Software Universal Database™ (UDB) V7 Enterprise Edition (DB2 EE) and Enterprise Extended Edition (DB2 EEE)

Hardware: Fujitsu Siemens Intel® based server and SAN (Fibrecat 4700)

Service: Support and migration by IBM, SAP and Business Partners

■ The Benefits

Less administrative expense; future-proof investment; low costs; stable, reliable operation



East meets West.

The Japanese Fujisawa Pharmaceutical Co. Ltd. – developed from a family business with a tradition going back more than a hundred years – and the Klinge Pharma GmbH – a medium-sized German family business in pharmaceuticals – have joined forces. In 1983, the Japanese obtained their first minority share in the German company. Klinge has been a one hundred percent subsidiary company of the corporate headquarters in Europe, Fujisawa GmbH, since 2002, and now goes under the name of Fujisawa Deutschland GmbH. Fujisawa invests 17 percent of its turnover in research and development. The chief markets are the USA, Japan and Europe. The company has won a significant market position with innovations such as Prograf, an immunosuppressive agent

used in organ transplantation, or Protopic, a cortisone-free medication for the treatment of neurodermatitis.

“Our SAP BW and the new DB2 database provide a very stable operation. We transfer the current sales data every two hours and the production planning and material data once daily from the SAP R/3 system to the SAP BW.”

*–Klaus Stoiber, IT Manager,
Fujisawa Deutschland GmbH, Munich*

The beginning of a success story.

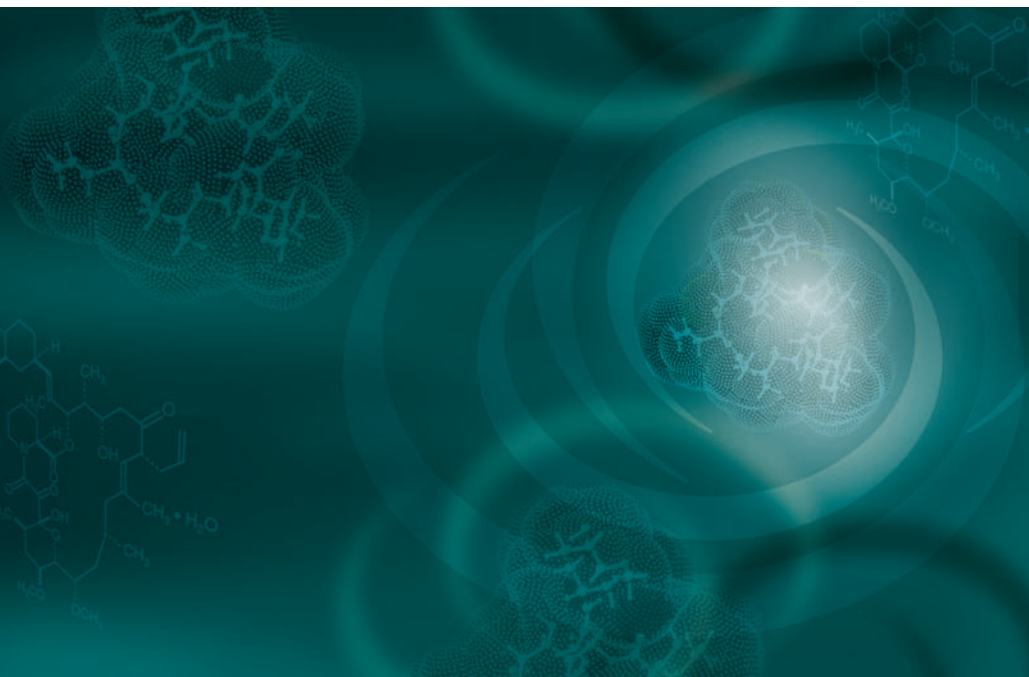
“When Fujisawa Deutschland GmbH formed, we looked for synergies in the IT sector as well”, remembers Klaus Stoiber, IT manager at Fujisawa Deutschland GmbH in Munich. While the neighbouring European headquarters take care of, for example, web servers and the Lotus® Notes® communication platform, and also provide PC support, the Deutschland-IT department is responsible for SAP user service. As early as 1995, the then Klinge Pharma carried out assessments to determine whether SAP could cover the business processes without modification costs. Result: yes. Thus SAP took over from the partly self-developed and little integrated programs used until then. This was the beginning of a success story that continues today with the seamless change to IBM DB2 Universal Database (UDB).

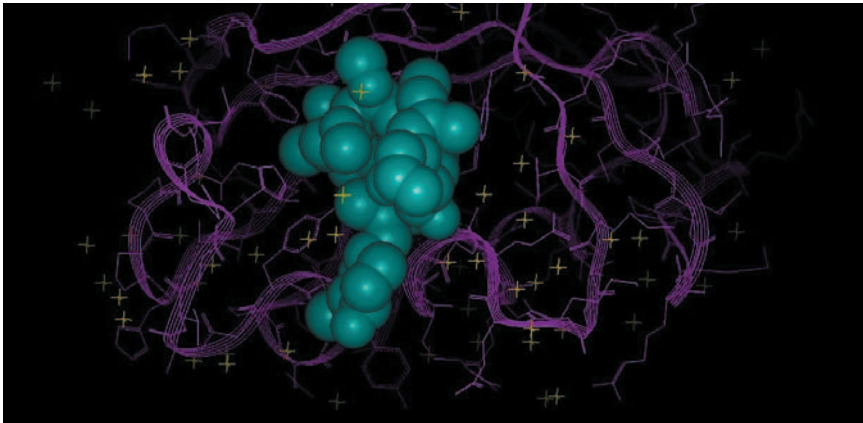
From 1997 to 1999 – with the support of Business Partners KPMG Unternehmensberatung GmbH and DHC Dr. Herterich & Consultants – SAP R/3 solutions were introduced for the following areas: Finance, Controlling, Materials Management, Quality Management, Sales and Distribution, Production Planning and Control and Production Planning for Process Industries. Fujisawa in Osaka/Japan employs SAP on a broad basis, as does Fujisawa Deutschland. “We use SAP in almost every area of business. When choosing software solutions, SAP always takes priority”, IT manager Stoiber defines the IT philosophy. “Our experiences with the SAP solutions have been really good. They have fully met all our expectations.” The SAP basic service for 250 users is shared between a mere two IT specialists – and the overhead for database management should be just as minimal.

Migration from Informix® to DB2.

2003 saw the start of the mySAP Business Intelligence (SAP BW) project for the production area. Here the choice fell on DB2, as some of the technical features of this database, such as excellent scalability, are of particular benefit. Until then, the Munich office had used Informix for SAP R/3. The decision to install DB2 and carry out the necessary migration of the Informix database was taken with a view to a general harmonization of the systems.

“We want uniform databases, to keep administration and management systems as simple as possible”, says Stoiber. DB2 was introduced in several stages. “In marketing we mainly evaluate sales and turnover statistics, for example by product and customer groups or distribution channels.” The SAP BW for this production area was started in 2003. It was a question of production and usage volumes, of target-performance comparisons in the use of resources and capacities, and of trend analysis in quality management. Around 20 different evaluations were produced; they can be carried out retrospectively for up to about three years. The project was completed in August 2003. Intended further areas of use are in purchasing, accounting and controlling. “Our SAP BW and the new DB2 database provide a very stable operation”, states Stoiber. “We transfer the current sales data every two hours and the production planning and material data once daily from the SAP R/3 system to the SAP BW. What we appreciate particularly is that we don't have to bother about interfaces. It all happens effortlessly.”





The installation of the SAP BW with DB2 was also a test for further solutions: “We knew that we would manage to change our SAP R/3 system to DB2 without encountering any major problems. We had absolutely no problems with the migration of our test system. It worked wonderfully. Only one migration run was needed for each system, then it was all done. Then we were able to migrate the productive system in only two and a half days, over the weekend.”

SAP BW with DB2 under Linux.

“Because, as a medium-sized business, we sought a cost effective solution that would be as economical as possible, we chose SuSe® Linux as our operating system – some of the reasons being that we had previous positive experience of UNIX®, and that we could use the price advantage for Intel based servers”, said Stoiber.

The system landscape comprises a test and a productive system for the SAP BW, a development/test system, an integration and a productive system for SAP R/3 – all in all, five database servers. The parallel DB2 Version (DB2 EEE) allows Fujisawa Deutschland to distribute the database over several computers.

“With the current data stock of around 40 GB that is not yet necessary. However, the more we use our SAP BW for analysis, the bigger the database will become, and then it will start to get very interesting.”

The entire system has become perceptibly faster. “We have a significantly higher performance”, confirms Stoiber. “A positive surprise for us was the fact that after the migration to DB2, our SAP productive system database was only 80 GB as opposed to the previous 120 GB. This gives us important benefits when carrying out backups, a process which is now, of course, much faster.”

The migration itself was carried out by an SAP business partner, Realtech. Klaus Stoiber sees this as an excellent start: “This has established a good basis for the next big step: the upgrade to SAP R/3 Enterprise. Careful preparation is imperative, as our business processes and the SAP system are subject to strict validation standards. We cannot afford to make any mistakes there. Therefore, we will be working closely together with IBM, SAP and their Business Partners again for the next migration.”





IBM Deutschland GmbH
70548 Stuttgart
ibm.com/de

IBM Österreich
Obere Donaustraße 95
1020 Wien
ibm.com/at

IBM Schweiz
Bändliweg 21, Postfach
8010 Zürich
ibm.com/ch

Die IBM Homepage finden Sie unter:
ibm.com

IBM, the IBM logo, e logo, DB2, Universal Database, Lotus, Lotus Notes and Informix are trademarks or registered trademarks of IBM Corporation in the United States, other countries, or both.

UNIX is a registered trademark in The Open Group in the United States and other countries.

Intel is a registered trademark of Intel Corporation.

SAP, the SAP logo, mySAP and all other SAP products and services mentioned herein are trademarks or registered trademarks of SAP AG in Germany and several other countries.

Linux is a registered trademark of Linus Torvalds.

SUSE is a registered trademark of SUSE LINUX.

Other company, product, and service names may be trademarks or service marks of others.

This case study illustrates how one IBM customer uses IBM and/or Business Partner technologies/services. Many factors have contributed to the results and benefits described. IBM does not guarantee comparable results. All information contained herein was provided by the featured customer and/or Business Partner. IBM does not attest to its accuracy.

© Copyright IBM Corporation 2003
All rights reserved.