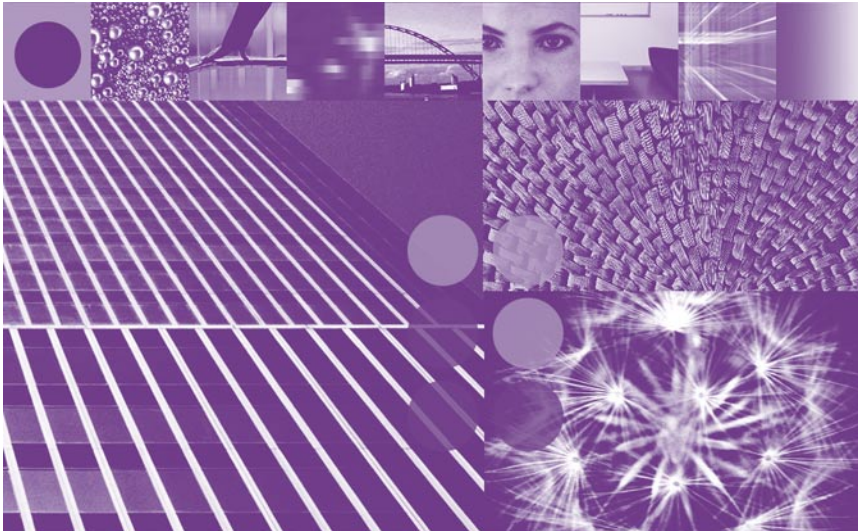


## IBM Taxonomy Services for WebSphere Information Integrator OmniFind Edition



### Highlights

- **Implement an enterprise search solution that delivers relevant content, not only from the Web, but also from wherever the data resides**
- **Categorize searchable content using a highly accurate categorization tool developed by IBM Research**
- **Accelerate your integration of diverse, distributed and real-time data**
- **Leverage IBM experts to enhance the information integration, search and taxonomy skills of your team**

IBM® WebSphere® Information Integrator OmniFind™ Edition features high-quality, scalable, free-form text search that finds the most relevant corporate information for employees, suppliers, partners and customers.

This offering will help your organization leverage the power of enterprise search by implementing a complementary enterprise taxonomy or corporate classification scheme. Enterprise search retrieves documents based on user queries, while an enterprise taxonomy classifies documents into a set of predefined categories. With a taxonomy implemented, WebSphere Information Integrator OmniFind Edition returns

search results along with their associated categories so users can more easily identify the most relevant results.

### What's involved

Consultants from IBM Software Services will help create a solution that uses WebSphere Information Integrator OmniFind Edition to build a categorized view of your business, helping you easily navigate to the information you need when you need it. The consulting team installs and configures your four-node WebSphere Information Integrator OmniFind Edition software, including a powerful categorizer that works in English, French, German and Italian. A customizable visualization tool called the Site Mapper (see Figure 1), which helps you view categorized content as a hierarchical site map. It is also installed as part of the engagement.

Throughout the engagement, the consulting team focuses on transferring knowledge to your team, ensuring that your staff will be left with both a technical understanding of the products used in the solution and also an understanding of the initial taxonomy as it relates to your business. Using best practices in

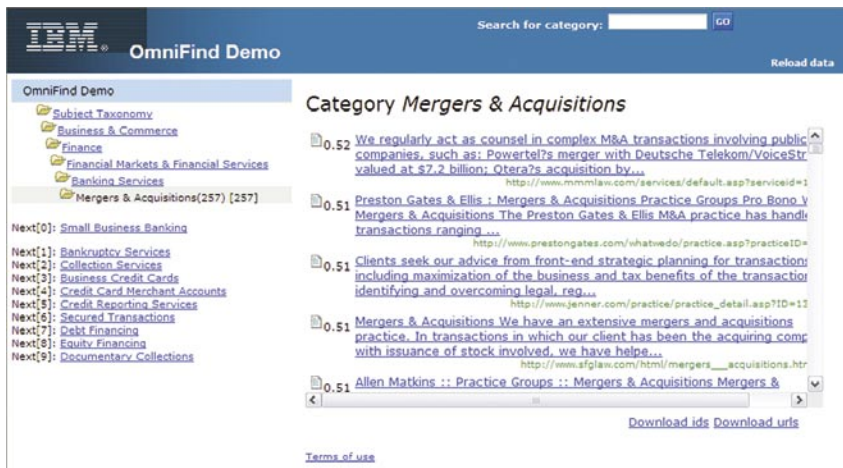


Figure 1: The Site Mapper visualization tool

taxonomy creation and management, our consultants will help your team understand the distinction between different types of nodes in the tree and the importance of synonyms and weights.

Upgrading the pre-packaged OmniFind Edition taxonomy using a pre-built industry-oriented taxonomy with 8,200 nodes created by IBM Research, the consulting team is able to quickly create a system that will accurately categorize your data. In addition, the consulting team will help you add up to 100 product nodes to the pre-built taxonomy so that your specific products can be categorized into the tree. Our consultants will further help you understand your requirements for enhancements or modifications to the taxonomy, including potential additions to and deletions from the predefined taxonomy to suit your specific business needs. We will also help identify additional crawlers that might need to be developed to access unsupported data sources. Crawler development and taxonomy additions over and above the 100 product nodes can be acquired through additional services engagements.

As a part of the engagement, the consulting team will help you index and categorize up to five million documents from up to two distinct data sources.

At the end of the engagement, the consulting team will deliver a detailed report covering data sources that should be crawled and indexed, indexing frequencies and a discussion of how the search engine will be accessed and how it will work with new and existing applications. The final report will also detail the estimated effort required to extend the taxonomy or to develop custom crawlers. Our consultants will conduct a final meeting with your team to present these deliverables and help ensure that you have a complete understanding of the system.

#### For more information

To learn more about IBM Information Management Software Services and this service offering, please contact your IBM representative, send an e-mail to [dmskills@us.ibm.com](mailto:dmskills@us.ibm.com) or visit our Web site at [ibm.com/software/data/services](http://ibm.com/software/data/services)



© Copyright IBM Corporation 2005

IBM Software Group  
Route 100  
Somers, NY 10589  
U.S.A.

Printed in the United States of America  
January 2005  
All Rights Reserved

IBM, the IBM logo, the On Demand Business logo, OmniFind and WebSphere are trademarks or registered trademarks of International Business Machines Corporation in the United States, other countries or both.

Other company, product and service names may be trademarks or service marks of others.

References in this publication to IBM products or services do not imply that IBM intends to make them available in all countries in which IBM operates.

The IBM home page on the Internet can be found at [ibm.com](http://ibm.com)