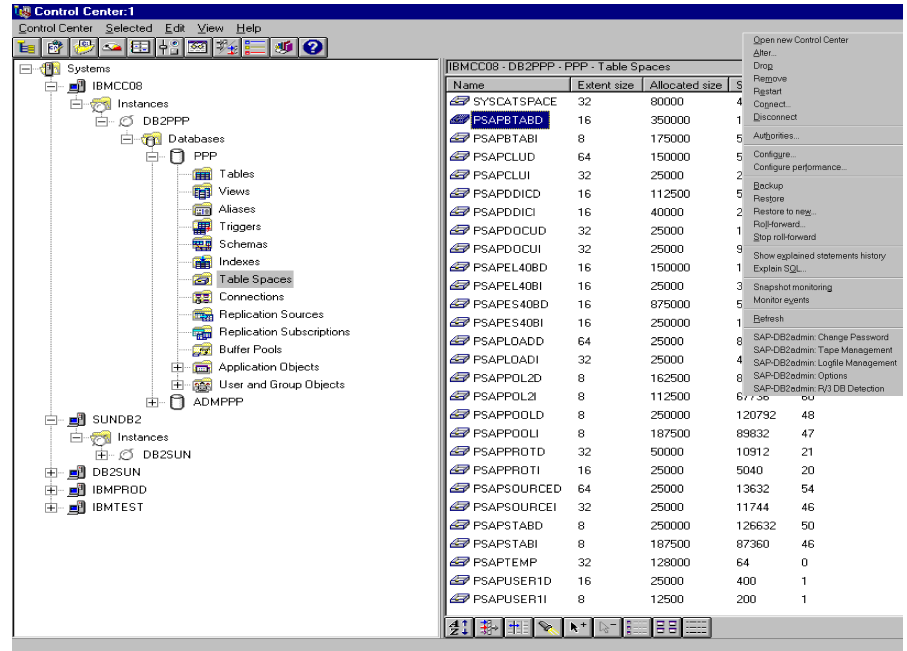




## Faster, Smarter R/3 Implementations

Ready-to-Run R/3<sup>®</sup> is an SAP<sup>®</sup> R/3<sup>®</sup> solution that packages pre-installed, pre-configured R/3 Basis system software from SAP with a completely prepared platform and network infrastructure.

# Ready-to-Run R/3 on IBM DB2 Universal Database



Tailored for the small and mid-sized business, Ready-to-Run R/3 simplifies the technical planning required for implementing a high-performance R/3 system. The Ready-to-Run R/3 solution combines software and hardware technology from SAP and IBM<sup>®</sup>. IBM Netfinity<sup>®</sup> for Ready-to-Run R/3 with DB2<sup>®</sup> Universal Database<sup>™</sup> represents an optimum solution for your business requirements.

### Easy Management

IBM DB2 Universal Database, the leading enterprise data management system, is optimized for SAP R/3 on Windows NT<sup>®</sup>. IBM DB2 Universal Database makes your data safe, secure and easily accessible. Industry experts and users are especially pleased about the new, highly intuitive GUI administration tools in the IBM DB2 Universal Database. The IBM DB2 Control Center, customized for SAP R/3, includes a browser-like interface for accessing and manipulating data-

base objects. The power of IBM DB2 Universal Database's administration tools is illustrated by the Smartguides, which are dialog boxes that guide users step-by-step through performance configuration and tool setup.

### Benefits of Ready-to-Run R/3 with IBM DB2 Universal Database

- Plug-and-Play solution
- Seamless support and integration
- Quick and economic R/3 implementation
- Optimized for R/3
- Scalable NT solution
- Customized Control Center
- Services support with Ready-to-Run R/3 Workshop
- Growth path for expansion

## Benefits of IBM DB2 Universal Database on Windows NT

- Scalable
- High availability
- High reliability
- High flexibility
- Industry leading DB Administration Tools
- HTML/Java Support

## IBM: Your Partner for SAP R/3

As you prepare for the next millennium, IBM and SAP offer a complete end-to-end Ready-to-Run R/3 solution. IBM is the one partner with both the technology, hardware and SAP expertise to bring you a solution that grows with your needs. IBM has implemented R/3 for more than 4,000 global customers. Through our close relationship with SAP, managed through the IBM Solution Developer Program, IBM offers the leading technology for the R/3 application, providing you with maximum performance, reliability and data integrity. This close collaboration includes seamless R/3 and DB2 support delivered through the IBM DB2 and SAP R/3 Competence Center in Walldorf, Germany and the IBM DB2 and SAP R/3 Integration and Support Center in San Jose, California, USA and Toronto, Canada. This guarantees that the technologies and products from both companies work together optimally.

## Ready-to-Run R/3

Ordering a Ready-to-Run R/3 System ensures that the installation and customization process does not interfere with your environment. The package includes a test and a production system. The hardware and software installations are completed by a certified SAP partner, which dramatically reduces installation times. The predefined installation process assures a minimized time schedule, including the time to do base customization and performance tuning. The entire process has been made as fail proof as possible using standardization and automation processes, thereby preventing installation errors. Nevertheless you are

able to adapt the networking environment and the SAP R/3 System name to the needs of your existing hardware and software environment. Based on your information the Ready-to-Run R/3 installation process will be done.

***“Selecting Ready-to-Run R/3 on IBM Netfinity with IBM DB2 Universal Database was an easy decision due to our DB2 background. We knew we could rely on IBM DB2 UDB for predefined backup management and its superior Control Center DB admin tool. In the end, SAP and IBM delivered on their promise of faster and smarter R/3 solutions, with excellent pre- and post-implementation support.”***

Thomas Bierwagen,  
SAP Projectleader, DIXIE UNION

## Top-to-Bottom Scalability

Ready-to-Run R/3 is now available in seven user configuration packages (starting at 15 users up to 300 users). Moreover we are offering the new SAP PO (Production Only) System additionally. This means you are able to buy only a production system without a test system which is very cost effective in an environment of many but small SAP systems. This system is sized for 15 users. The user requirements are determined via the SAP Quick sizer, which requires input regarding numbers of low, medium, high use users per module. IBM DB2 Universal Database offers the most scalability and flexibility, allowing your system to grow well beyond the predefined Ready-to-Run R/3 packages. IBM DB2 Universal Database supports well beyond 200 medium-use sales and distribution users without any system interruptions, which allows for future growth options after implementation. As your business requirements grow, so can IBM DB2, allowing for new application server CPUs or additional hard disk.

## Ready-to-Run R/3 System Components

### Hardware

- Production system: up to 3 PC-Server
- Test System
- Lan Server and Networking Equipment
- Preconfigured PC
- Network Printer

### Software

- MS Windows NT 4.0 Server
- IBM DB2 Universal Database
- SAP R/3
- System Administration Assistant
- Initial implementation service
- HW/SW installation
- Network customizing
- Setup high availability disk layout
- SAP Basis Customization
- On-site workshop

## IBM / SAP COMPETENCE CENTER



Altrott-Str. 31  
D-69190 Walldorf  
Germany  
Phone (+49/62 27) 73 10 99  
Fax (+49/62 27) 73 10 52  
email: [infoserv@de.ibm.com](mailto:infoserv@de.ibm.com)  
<http://www.software.ibm.com/db2sap>

### SAP Headquarters

SAP AG · Neurtstraße 16 · 69189 D-Walldorf  
Germany · Phone (+49/180) 5 34 34 24  
Fax (+49/180) 5 34 34 20 · <http://www.sap.com>

You can find this and other current literature on our home page in the media centers for each subject at:  
<http://www.sap.com>