

IBM WebSphere DataStage Version 7.5.2— Transformation using MapStage

Highlights

- ***Access, transform and deliver information to and from data sources that have complex hierarchical metadata formats***
- ***Easily interoperate with business process management, business process integration, enterprise application integration and messaging technologies***
- ***Parse and transform data structures in a single pass***
- ***Automatically apply routing rules to a field or set of fields***
- ***Reduce the costs and risks associated with complex business initiatives***

Information integration enables consistent views of data

Companies are driven by the need to create valuable and readily accessible information. But integrating information in different formats from multiple systems is difficult. The ability to deal with data in its native form and to provide valuable enrichment of raw data is crucial in linking business systems to the data integration processes that create consistent and reliable views of enterprise data.

IBM WebSphere DataStage: A solution for enterprise data integration

IBM® WebSphere® DataStage® software, a core component of the IBM WebSphere Data Integration Suite, enables the tight integration of enterprise information, despite many data sources or targets and short time frames.

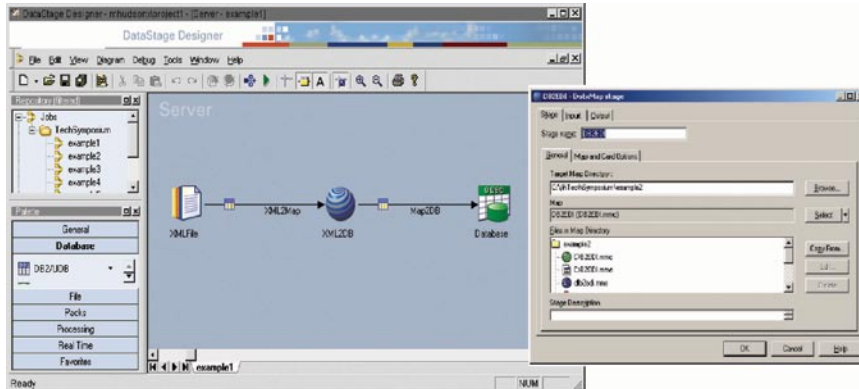
Whether building an enterprise data warehouse to support the information needs of the entire company, creating a “real-time” data warehouse or integrating dozens of source systems to support enterprise applications—customer relationship management, supply chain management and enterprise resource planning—WebSphere

DataStage helps ensure the availability of information you can trust.

WebSphere DataStage delivers three key capabilities necessary for success in enterprise data integration: the most comprehensive connectivity to access any source or target system easily and quickly; advanced development and maintenance tools to speed implementation and simplify administration; and a scalable platform that can easily handle today’s massive volumes of corporate data.

Integrating data sources with complex metadata formats

Today, many organizations use a wide variety of proprietary and commercial business applications that produce data with complex, semi-structured and interdependent data types. When dealing with complex proprietary formats, semi-structured XML files or industry-standard formats, companies frequently need to use manual or programmatic manipulation of complex data in order to prepare it for processing. Far too often this results in high implementation and management costs, lost productivity, lack of data insight and single-purpose integration stovepipes.



MapStage easily maps complex XML data as part of a data integration flow

MapStage simplifies data integration

IBM WebSphere DataStage includes an intelligent assistant called MapStage that makes it simple to include information that appears in complex hierarchical metadata formats as part of an enterprise data integration process. MapStage is designed to handle hierarchical, semi-structured and mixed-format data. It enables integration designers to visualize complex data types in graphical form and it provides powerful data processing and manipulation capabilities. This programming-free method allows users to build process and integration flows based on business requirements, without the constraints of the programming model or common data model. Through an easy-to-use, drag-and-drop interface, users are able to construct integration and data processing objects and deploy them directly from the design rather than coding under the design as required by other methods.

MapStage automatically calls a transformation engine that can natively process many data inputs together with a single read of the data, and provide these combined input processes to many outputs in a single process. This unique ability can help dramatically lower processing costs, increase processing throughput, and most importantly, provide powerful data integration, enhancement and processing capabilities that are available across the enterprise infrastructure.

MapStage is just one of the capabilities available with IBM WebSphere DataStage to help your organization integrate and deliver information you can trust.

For more information

To learn more about the technologies and products behind the IBM WebSphere Information Integration platform, contact your IBM marketing representative or IBM Business Partner, or visit ibm.com/software/data/integration.

© Copyright IBM Corporation 2006

IBM Software Group
Route 100
Somers, NY 10589
U.S.A.

June 2006
All Rights Reserved
Printed in the United States of America

DataStage, DB2 Universal Database, IBM, the IBM logo and WebSphere are trademarks or registered trademarks of International Business Machines Corporation in the United States, other countries or both.

Other company, product or service names may be trademarks or service marks of others.

References in this publication to IBM products or services do not imply that IBM intends to make them available in all countries in which IBM operates. Offerings are subject to change, extension or withdrawal without notice.