

IBM Informix Data Director for Web Version 2.0



Highlights

- *Speeds creation of Web-ready, dynamic content management applications for IBM Informix® Dynamic Server™*
- *Automates all data access operations of the client application*
- *Reduces amount of code that must be written*
- *Handles increasingly diverse technical requirements*
- *Speeds time-to-market.*

Reduce development time

IBM Informix Data Director™ for Web (DDW) is a powerful and visually intuitive development environment that enables developers to quickly prototype, build, manage and deploy dynamic Web applications highly optimized for IBM Informix Internet Foundation.™ Tightly integrated with the IBM Informix Web DataBlade® module 4.x, DDW provides sophisticated project and content management capabilities so entire teams (whether local or remote) can collaborate on development projects simultaneously.

IBM Informix DDW provides an easy-to-use interface for rapid application development. It gives developers the flexibility to use wizards to customize and optimize their Web

applications. By integrating with industry leading tools and technologies, IBM Informix DDW ensures optimal integration in the enterprise, making it ideally suited for developing sophisticated Web applications that incorporate automated and dynamic Web publishing and mission-critical transaction processing.

DDW is specifically designed to support developers using IBM Informix Dynamic Server and the IBM Informix Web DataBlade module 4.x. This integration allows Web developers to take full advantage of the IBM Informix Dynamic Scalable Architecture™ server technology to manage all their Web content and application logic together for increased manageability, security and accuracy, while simultaneously creating applications that dynamically deliver customized information to the user.

Unlike other Web solutions that store Web applications as flat files and scripts in the file system, IBM Web-based application solutions store entire Web applications, including Web page templates and site content, in the IBM database. IBM Informix Dynamic Server and the IBM Informix Web DataBlade module 4.x also enable organizations to manage and publish compelling text, audio, images, video, spatial, time-series data and more.

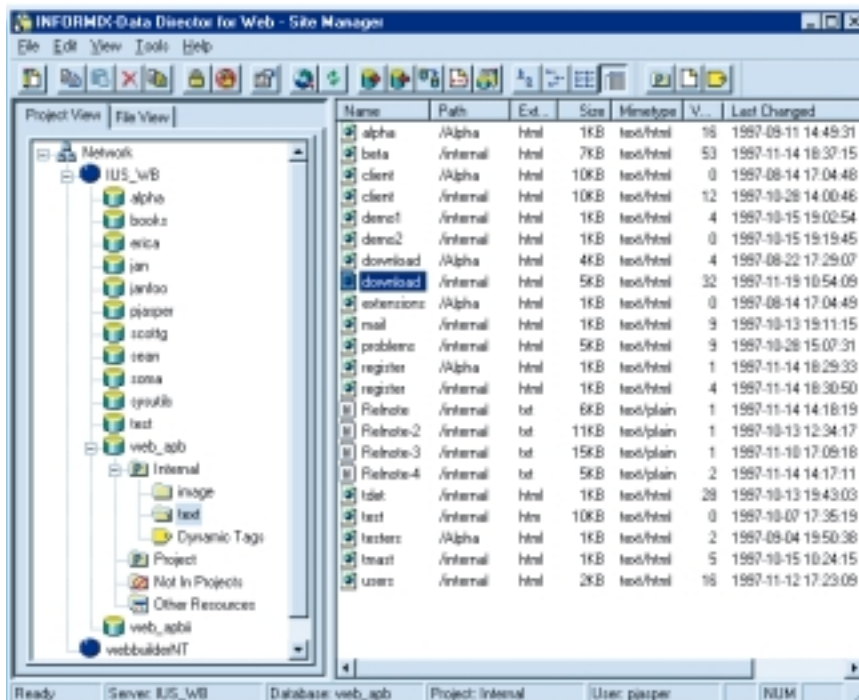
Content is delivered to the Web browser through application pages—called “AppPages.” These AppPages contain a set of HTML-compliant tags and attributes that are expanded at runtime into HTML documents. Any database content can be dynamically incorporated into the HTML documents. You can also use programmatic capabilities such as variables and conditional statements for even more run-time flexibility.

Sophisticated content management

DDW is ideal for building database-enhanced applications. It offers a number of advanced features and functionality for rapid application prototyping and development of AppPages, and it provides a sophisticated Web site and content management system for creating and maintaining flexible, content-extensible Web applications.

Site Manager

A key component of DDW is Site Manager, used to manage and organize the Web-specific content stored within an IBM database, as well as handle extensible resources such as MIME multimedia types and user-defined tags. Site Manager allows developers to import content from existing file system-based Web sites, group content by projects and content types, and deploy from development to production databases.



Site Manager: Navigating Web content for organization

Site Manager displays a Windows® Explorer-style visual representation of your Web site, through which you navigate the Web content and apply operations to organize the site.

The project view provides a logical grouping of content, which can be deployed together, locked as a group, and/or worked on by a team. The file view provides a hierarchical organization compatible with the file system hierarchy of file system-based Web sites.

Site Manager also provides resource-locking to enable multiple developers to simultaneously work on the same Web site.

Rapid application prototyping and development

IBM Informix DDW is a versatile product that enables developers to rapidly build and extend Web applications. A key component of DDW is AppPage Editor, which provides a simple, Windows-based, graphically enhanced interface for authoring and designing AppPages. It helps developers create and apply dynamic tags—reusable components that simplify the building of AppPages. It also provides a color-coded view of HTML source, dialogs for prompted editing of special tags and several wizards

to guide the user when generating queries and assembling forms linked to database content. With AppPage Editor, developers can edit and enhance Web pages developed using other industry-leading Web page development tools like Microsoft® FrontPage®, Netscape Composer, HotDog by Sausage and Allaire Cold Fusion.

For more complex programming tasks, AppPage Editor provides wizard technology to guide the developer through the AppPage tag creation process. Most importantly, rather than inserting complex SQL sequences of tags directly into the AppPages, the AppPage wizards construct user-defined tags that encapsulate queries and SQL statements into easily reusable components.

AppPage Editor provides a number of dialogs to speed common tasks. It also provides dialogs that assist the developer in constructing variable processing functions. All application resources can be inserted into your AppPages through a simple, easy-to-use drag-and-drop metaphor. AppPage Editor color codes HTML to distinguish the different elements. Special tags of IBM Informix Web DataBlade module 4.x are easily identified, and as changes are made, the color coding is dynamically updated. You can preview the AppPage directly within the editor, or from your external Web browser.

Support for Web innovation

DDW allows developers to integrate a broad range of datatypes to incorporate multimedia, geospatial analysis, text and document management, data mining, and other application capabilities. Using the Site Manager, you can easily make edits to the list of available MIME types—allowing applications to be extended to handle additional types of content resources. By selecting how to edit each type of resource, you can also integrate other tools into your development environment.

Performance and scalability

Both AppPage Editor and Site Manager use a Database Connection Pool Manager providing performance enhancements and more efficient memory usage. Performance improvements and other scalability enhancements in the Smart Blob interface for IBM Informix Dynamic Server offer significant benefits.

Manageability

Users can maintain and manage versions of their edited resources using DDW Version Control features including Check-In, Check-Out and many others.

Usability

Each document window within AppPage Editor in IBM Informix DDW has a tabbed pane called "Layout." This pane provides a WYSIWYG representation of the document with powerful formatting and selection features. Users can easily gain access to row type data and simplify query constructions.

Ease of development

Important IBM Informix Web DataBlade module 4.x tags and variable processing functions are supported in the DDW AppPage Editor, facilitating rapid AppPage development.

Tags

The following Web DataBlade module 4.x tags (MIEXEC, MIELSE, MIDEFERRED and MIFUNC) and variable processing functions (EVAL, EXIT, MOD, ROUND, TRUNC, UNHTML, UNSETVAR, VECSIZE and VECAPPEND) are supported in AppPage Editor:

Ease of deployment

DDW facilitates the distribution of staged builds. Imported resources may also be assigned a version label as a function of the import process.

Persistence

Users can access recall sessions and interact with session information while in preview mode.

Extensibility

Users can expose User Defined Routines (UDRs) as if they were dynamic tags, thus facilitating easy reuse of resources.

Solutions for today's businesses

IBM Informix information management solutions are open, scalable, manageable and extensible—providing the kind of flexibility that is essential for growing organizations. Whether utilized for data warehousing, analysis and decision support, Web content delivery, or broadcasting mixed media, IBM Informix products are engineered to enable today's businesses to efficiently manage all kinds of information—anywhere, at any time.

Find out more

For more information, contact your local IBM representative or visit the following Web site:

ibm.com/software/data/informix



© Copyright IBM Corporation 2001

IBM Corporation
Silicon Valley Laboratory
555 Bailey Avenue
San Jose, CA 95141
U.S.A.

Produced in the United States of America
09-01
All Rights Reserved

IBM, the IBM logo, Informix, DataBlade, Data Director, Dynamic Scalable Architecture, Dynamic Server, Foundation and the e-business logo are trademarks or registered trademarks of International Business Machines Corporation in the United States, other countries, or both.

Intel and Pentium are registered trademarks of Intel Corporation in the United States, other countries, or both.

Microsoft, Windows and FrontPage are registered trademarks of Microsoft Corporation in the United States, other countries, or both.

Other company, product, and service names may be trademarks or service marks of others.

References in this publication to IBM products or services do not imply that IBM intends to make them available in every country in which IBM operates.



GC27-1538-00