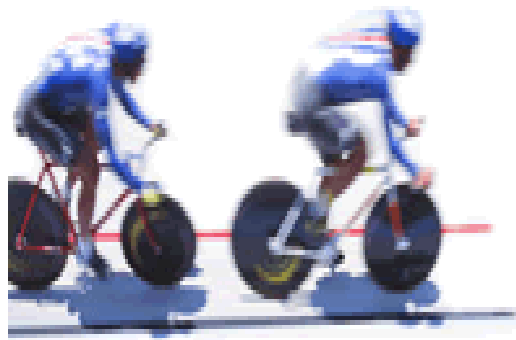




IBM Software Group



**Informix Dynamic Server 9.4**  
Performance. Reliability. Scalability

@business on demand software

**Informix Dynamic Server v9.4-**  
**How and Why to upgrade Today**

[www.ibm.com/informix/ids](http://www.ibm.com/informix/ids)

**DB2 Information Management Software**



IBM Software Group

# Informix Dynamic Server 9.4

**Fast,  
Reliable,  
Scaleable,  
Successful!**



Patricia Quinn

WorldWide Brand Manager, Informix Dynamic Server  
IBM Information Management Solutions

@business on demand software

## IDS 9.40 – Market Success!

The fastest, most reliable, highest scaling IDS database ever produced.... provides the performance and reliability needed for today's always available, demanding and global e-business environments.



"With over 1200 downloads, IDS 9.4 has become the most successful download ever at the IIUG site."

IIUG, July 24, 2003

"... the majority of Informix users plan to continue to use or expand their use of Informix in the foreseeable future..."

*July, 2003 IBM survey of over 200 Informix customers worldwide*



## IDS 9.4 – Delivering Business Value

- IDS 9.4 provides the **performance, reliability and scalability/availability** needed for today's demanding and global e-business environments
- 9.4 continues to reduce the complexity, time, DBA skills and costs associated with database management by eliminating, simplifying and automating many tasks traditionally associated with maintaining an enterprise-class database.
- IBM & IDS enables Customers and Business Partners to improve their profitability, reduce their risk and deliver best of breed solutions.



# Who's using IDS 9.40?

## Application

Hosts 40,000 financial transactions daily for transportation industry

## Business Benefits

Can now offer more secure and highly available processing environment with added encryption and combined ER & HDR functionality. Large chunks saves DBA cycles.



*"We chose Informix over Oracle for its superior performance and stability, as well as its extremely competitive price. That decision has consistently reaffirmed itself in our ongoing evaluations of the data management marketplace."*

*We have no doubt that IBM Informix 9.4 is as robust and reliable as any database available today, and the absolute leader in cost-performance."*

**Stephen Cobb**

Senior Database Administrator

# Large Chinese Telecommunications Equipment Manufacturer

- Needed to reduce costs and achieve a more stable platform with greater functionality .. wanted to consolidate to a single hardware and database environment.
- Consolidated from a multiplatform to a single Linux environment
- Database servers were consolidated from Microsoft® SQL Server, Oracle and Informix to **Informix IDS 9.4. Linux on IBM eServer xSeries platform**
- Significantly reduced IT platform costs
- Achieved a high performance, scalable and reliable single, integrated hardware and software environment



# Major Financial Institution: IDS 9.4/Finance Foundation/RedHat Linux 7.2

Wanted to develop a **competitive advantage** by implementing a sophisticated quantitative analysis system that could effectively search and analyze both real-time and historical data to spot trends identified by quantitative models. It planned to use the solution for equities research, and arbitrage and hedging analytics in addition to addressing regulatory compliance issues.

In order to meet budget requirements for the project also needed an alternative to its UNIX-based Sun Solaris operating environment that could help drive down costs without compromising system performance.

The new solution has helped to increase revenue and improve risk management functions (and) because the solution is running on Linux, was able to optimize solution performance on Intel-based servers, which are less expensive to purchase and maintain than UNIX-based server.



# Application Partners

- Combine IDS with our partner's products to achieve world-class solutions for any business problem!
  - ▶ IDS & SAP
  - ▶ IDS & BAAN
  - ▶ IDS & PeopleSoft
  - ▶ IDS & Lawson







IBM Software Group

## 9.4 News...

**DB2** Information Management Software



@business on demand software

# IDS 9.4 for Linux on zSeries

- IBM Informix 9.40 is the first IBM database engine to fully exploit the large memory, **64-bit** capabilities of the Linux kernel on the zSeries , and provides an excellent upgrade path for our Linux customers needing a high-performance, Internet-scalable data management system
- Fully implemented **64-bit** architectures, such as zSeries , removes the **31-bit** limitations from files, files systems, and applications and enables the use of detail-data regardless of its volume.
- **64-bit** systems also reduce the work of the application programmer by removing the design constraints inherent in **31-bit** architectures. This means larger I/O block sizes, reduced disk accesses, the ability to store more data in system memory, all of which result in improved performance, ease of use, and the ability to handle larger problems more easily.



# .Net, Windows 2003

- IDS 9.40 certified on Windows 2003
- Currently, .Net connectivity through ODBC or OLEDB
- Native .Net Provider will be delivered with CSDK 2.81, available by end of 2003
- Technical Preview available as of next week



## IDS 9.4 Promotion - US & Canada, ends 12/31/03!

- From 7/22/03 through 12/31/03 Purchase a trade up from IDS 7.x to IDS 9.4 (including Linux on zSeries) or the Transaction Processing Gold Bundle and a NEW IDS 9.4 or Transaction Processing Gold license and receive a rebate!
- Rebates are tiered - more heavily weighted to early months – Buy early!
- For more information
  - ▶ US: [www.ibm.com](http://www.ibm.com) web site; enter IDS0722 in the "NavCode" window
  - ▶ Canada: [www-132.ibm.com/content/home/store\\_IBMPublicCanada/en\\_CA/special\\_offers.html](http://www-132.ibm.com/content/home/store_IBMPublicCanada/en_CA/special_offers.html)



## IDS Product Life Cycle Dates

- IDS 7.31
  - ▶ End of marketing 4/15/05 (aka Cat 3)
  - ▶ End of support 4/15/06 (aka Cat 4)
- IDS 9.2
  - ▶ End of service 9/30/03
- IDS 9.3
  - ▶ End of marketing 1/15/04
  - ▶ End of service 9/15/04
- IDS 9.4
  - ▶ End of marketing 4/15/05
  - ▶ End of service 4/15/06

[www.ibm.com/software/data/informix/support/plc](http://www.ibm.com/software/data/informix/support/plc)





# IBM Data Management

**Technical Conference**

**Mark Your Calendars!**

*October 27-31,  
2003*

**Location:** Las Vegas, Nevada  
**Venue:** Las Vegas Hilton Hotel

<http://www.ibm.com/services/learning/conf/us/dm/>





# IBM Informix Dynamic Server

## IDS 7

- Hardened Classic Database Features**
- Traditional Data Types**
- Administrative helps**
  - Onstat
  - Oncheck
  - ISA
- Scalability**
  - Up to 2GB Chunks
  - Up to 4TB Instances
- Security**
  - Encrypted Passwords

## IDS 9

- Database for an On-Demand World Features**
- Administrative helps**
  - **Dynamic locks**
  - **Dynamic Logs**
  - **Shared Statement Cache**
  - **Large Chunks**
  - **HDR with ER**
  - Onstat Enhancements
  - Rename chunks during Restore
  - More In-Place Alters
  - Attach Detach Fragment
  - AGS ServerStudio JE
- Developer helps**
  - **Long Ids**
  - On Select Triggers
  - Retain Update Locks
  - Additional SQL functions
  - Non-Logging Tables

### Plus ...

#### Improved Performance

- **Fuzzy checkpoints**
- **Fractional LRU Min/Max**
- **B-Tree Scanner**
- **8-10% Faster than IDS 7.31**
- Memory Resident Tables
- Reduced code paths

#### Latest Platform Support

#### Scalability

- **Up to 4TB Chunks**
- **Up to 128PB Instances**
- 2GB Utility Limitation removed

#### Security

- **Encrypted Communications**
- Plug-in Authentication Modules

### ... but best of all ...

- 2 minute upgrade from 7.3
- Fully Backward Compatible





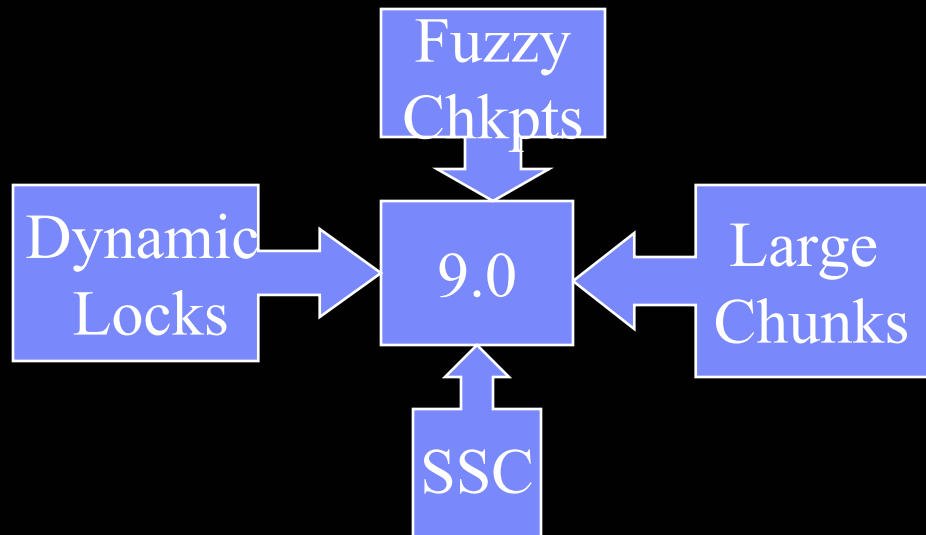
# The HOW & WHY

- Migration / Reversion
- 9.x Server Features
- SQL Additions
- Smart Large Objects
- Extensibility Feature



# What Does 9.X Mean?

- IDS has many 9 versions
  - ▶ 9.0, 9.1, 9.2, 9.3, and 9.4
- Extensibility started in 9.0
- Other Features added to later versions



# Migration

- Can be done from 7.2, 7.3, 9.14, 9.2, and 9.3
- Release notes provide key information
- A small amount of preparation is required



# Release Notes

- Usually 15-20 pages
- Print and keep handy during migration
- Information about new features and changes to existing features
- OS level information
- Third party software version support
- Much, much more.....
- `$INFORMIXDIR/release/en_us/0333`



# Migration Footnotes

- Installation media
- Pre-install new version in different directory if possible
- Level 0 archives before and after
- Verify storage manager validation
- Test, test, test.....



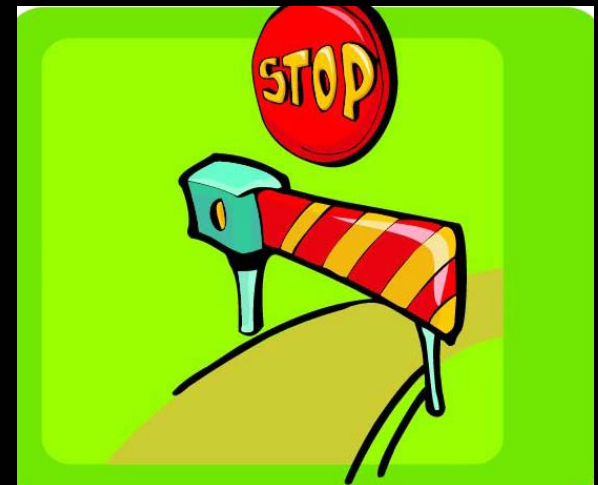
# Migration Checklist

- Enough disk space
- Configuration files
  - ▶ onconfig, sqlhosts, On-Bar, On-Audit
- ER conversion / disable HDR, if necessary
- NO open transactions/ In-Place Alters
- Environment variables
  - ▶ INFORMIXDIR,PATH, any library variables
- Data Integrity checks
- UPDATE STATISTICS



# Reversion

- Reversion capable
- Only back as far as 7.20.UC1
- Onmode `-b <major version>`
  - ▶ Major versions are 7.2, 7.3, 9.14, 9.2, 9.3



# Reversion Capable??

- New features will not revert back to previous versions
- Onmode -b does a check of all databases for these new features
  - ▶ 2 phases (Check, Reversion)
- Key non-revertible items
  - ▶ New databases, in-place alters, new SPL and triggers, new indices





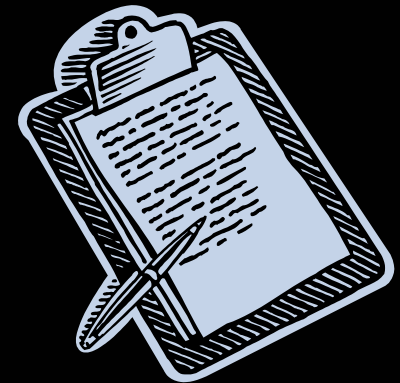
# Reversion Footnotes

- Reversion Capable
- Installation media
- Pre-install old version in different directory if possible
- Level 0 archives before and after
- Verify storage manager validation



# Reversion Checklist

- Reversion Capable
- Configuration files
  - ▶ onconfig, sqlhosts, On-Bar, On-Audit
- ER reversion/ disable HDR, if necessary
- NO open transactions/ in-place alters
- Environment variables
  - ▶ INFORMIXDIR,PATH, any library variables
- Data Integrity checks
- UPDATE STATISTICS



## 9.x New Server Features

- Sql Statement Cache (SSC) 9.21
- Dynamic Locks 9.20
- Dynamic Logs 9.30
- Large Chunks 9.40
- Onpladm 9.21
- Fuzzy Checkpoints 9.20
- And many, many more.....



# SQL Statement Cache

- SQL statements are stored in a shared area
- Session level memory is reduced
- Eliminates statement reparsing
- Only DML statements are eligible
- Onconfig parameters, environment variables, onmode -e commands, and SET SQL statement



# Dynamic Locks

- Initial size is still specified with the LOCKS onconfig parameter
- Size can be increased up to 16 more times
- Size is increased by the minimum of:
  - ▶ 100,000
  - ▶ LOCKS parameter setting



# Dynamic Logs

- Helps finish ROLLBACK of large transactions that fills the logical logs.
- DYNAMIC\_LOGS onconfig parameter
  - ▶ Default value is 2
  - ▶ LTXHWM/LTXEHWM to 80/90 respectively
- Onparams -i option added
- Adding logs no longer requires Quiescent mode or an archive



# Fuzzy Checkpoints

- Doesn't flush all dirty buffers to disk
- Shorter checkpoint duration means less impact on the users
- Disk is not physically consistent
- Uses logical logs for disaster recovery
- Reduces physical log size requirements



# Onpladm

- New command line administration tool for use with HPL
- X-Windows GUI no longer needed
- Administration can now be scripted
- Example:
  - ▶ `onpladm create job jobname -n -d device -D database -t table`





# Large Chunks

9.40

- 4 Terabyte Chunks and Offsets
- 32,767 Chunk limit
- Incremental conversion
  - ▶ Onmode `-BC <stage>`
  - ▶ Stages are 0,1, and 2
  - ▶ Stage 0 is default (large chunks disabled)
  - ▶ Stage 1 is still revertible
  - ▶ Stage 2 can only be reverted via archive



# Security

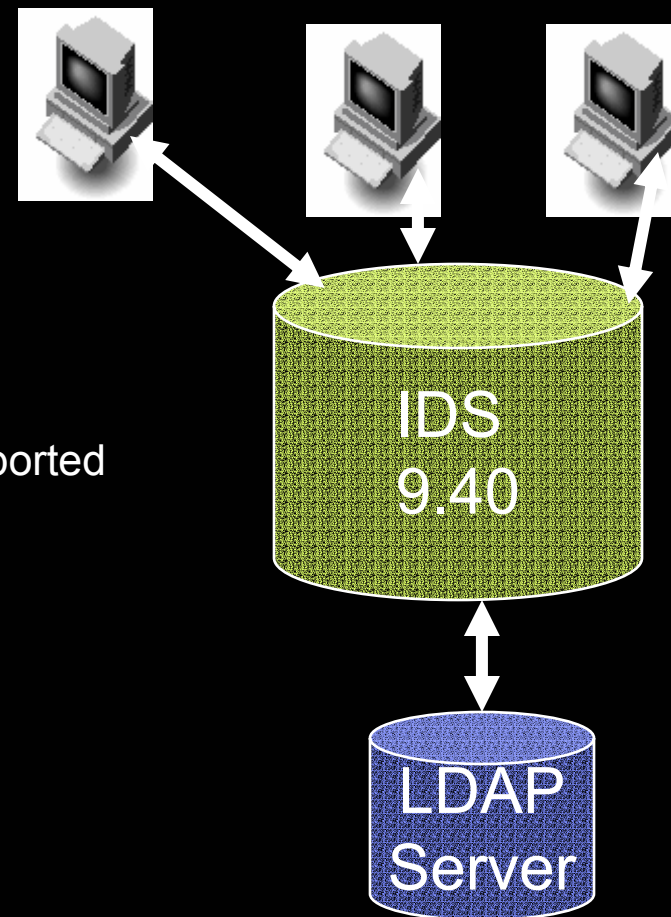
## 9.40

- Previously, password encryption using CSS/CSM technology
- Now (optionally) using CSS/CSM to encrypt all conversations from client to server
  - ▶ Using cryptography libraries from OpenSSL.
  - ▶ Not using OpenSSL directly because of design of ASF.
- Optionally encrypt ER traffic
  - ▶ Often sent over long-haul networks.
  - ▶ Protects data sent over Internet.
- With IDS 9.40 XC2 Pluggable Authentication Modules are supported.
- Check the config notes all in \$INFORMIXDIR/release/en\_us/0333/pam.txt to implement



# Pluggable Authentication Modules

- Allows LDAP support with IDS
- Implemented on PAM platforms:
  - ▶ AIX 32 bit
  - ▶ HP UX
  - ▶ Sun Solaris
  - ▶ Linux
  - ▶ Windows and other non-PAM platforms not supported
- Supports “Challenge Response”



# Rewritten B-Tree Cleaning

9.40

- Under previous versions
  - ▶ Single-threaded B-Tree cleaner
  - ▶ Could get overwhelmed by amount of work to do
- Replaced by B-Tree Scanner
  - ▶ Prioritized workload
  - ▶ Multiple scanner threads possible
- Alternative algorithms available
  - ▶ Leaf scan
  - ▶ Light range scan
- Controlled by onmode
- Monitored on onstat
  - ▶ Adjust priority of threads
  - ▶ Adjust number of threads



# Revised Buffer Priority Management

9.40

- Older system gave priority to
  - ▶ Memory-resident tables
  - ▶ Index pages
- Had four tier priority system
  - ▶ High, Medium High, Medium Low, Low
- New system has two tier priority system
  - ▶ High – using FIFO
  - ▶ Low – using LRU
  - ▶ Maximum amount of High is controllable
  - ▶ Moves frequently used pages from low to high automatically
  - ▶ Resets the use counters at checkpoints
- Dynamically balances use of shared memory
  - ▶ Improves overall performance



And the list goes on and on and on.....

- Too many new features to continue to mention in this short amount of time.



# SQL Additions

- ANSI JOIN syntax support
- ORDER BY change
- On Select Triggers
- New defined data types



# JOIN Syntax

- ANSI JOIN syntax supported in 9.21
  - ▶ SELECT c.cust\_num, company, o.ord\_num  
FROM customer c JOIN orders o  
ON c.cust\_num = o.cust\_num  
WHERE ...
- LEFT and RIGHT OUTER support in 9.4
- CROSS JOIN support in 9.4





# ORDER BY change

9.40

- Order By columns no longer required in the select list
- Example:
  - ▶ `SELECT cust_num, lname`  
`FROM customer`  
`ORDER BY zipcode;`



# ON SELECT Triggers

9.30

- Have always had INSERT, UPDATE, and DELETE TRIGGERS
- Can now fire a trigger based on the selection of a column or row of a table
- Syntax:
  - ▶ CREATE TRIGGER trigrname  
SELECT [OF column] ON table ...



# New defined data types

- LVARCHAR
  - ▶ Default 2K, explicitly up to 32,767 and if used as opaque > 2GB
- Boolean
- Integer8 / Serial8
  - ▶ -9,223,372,036,854,775,807 to + of the same
- Row
  - ▶ Named and Unnamed
- Collections
  - ▶ Set, Multiset, and List



# Smart Large Objects (SLOBs)

- BLOB and CLOB data types
- Extensibility storage
- Stored only in Sbspaces
- Onspaces –S, -g, -Mo, -Ms, -Df options
- Onconfig parameters
  - ▶ SBSPACETEMP
  - ▶ SBSPACENAME
  - ▶ SYSSBSPACENAME



## Simple vs. Smart

- Max Size 2GB
  - Logging mode depends on the db
  - Read/Write at the whole object level
  - Lock entire object
- Max Size 4TB
  - Logging mode set at the object level
  - Read/Write at the byte level
  - Lock entire or portion of the object

Etc., etc., etc.



# Extensibility

- Extending into ORDBMS
  - ▶ Complex data types
  - ▶ User-defined data types
- DataBlades
  - ▶ UDTs
  - ▶ UDRs / UDAs
  - ▶ Written in C, C++, JAVA, or SPL



# A Simple Data Query

```
SELECT company_name, SUM(billed_amount) amount
FROM invoice_history
WHERE inv_date <= '12/31/97'
ORDER BY amount DESC;
```

Result set:

company_name	amount
Zuzu Products	\$15,498.78
Amalgam Ltd.	\$12,458.20
Cosmo Inc.	\$11,092.94
Widgets Inc.	\$ 9,495.20
Bill Johnson	\$ 8,394.44

# Add GeoSpatial Information

```
SELECT company_name, mpn_Distance (location, LatLong (
    '52 Commerce St. Dallas, TX 75009'))::miles dist,
    SUM(billed_amount)amount
FROM invoice_history
WHERE inv_date <= '12/31/97'
ORDER BY dist;
```

Result set:

company_name	dist	amount
Zuzu Products	1 mi	\$15,498.78
Amalgam Ltd.	207 mi	\$12,258.20
Cosmo Inc.	955 mi	\$11,092.92
Widgets Unl.	1407 mi	\$ 9,495.20
Bill Johnson	9081 mi	\$ 8,394.44



# User-Defined Types

- Distinct

- ▶ Based on an existing data-type
- ▶ Strongly typed – explicit cast required

- ▶ Example

- CREATE DISTINCT TYPE age\_in\_months AS SMALLINT
- CREATE TABLE cust\_info (fname char(20), lname char(30), age\_in\_months);
- SELECT \* FROM cust\_info where age::smallint > 60;



# User-Defined Types (con't)

- Opaque
  - ▶ User created structure
  - ▶ Steps:
    - Define the data structure
    - Write support functions
    - Register the data type
    - Register the support functions
    - Cast the opaque data type
    - Grant privileges
    - Write any additional UDRs needed to support the data type
    - Create secondary access methods and aggregates



# JAVA in the Server

- Certain versions starting with 9.2 support JAVA
- Run through JVP VP
- JVM 1.3 support starting in 9.3
- Allows UDRs to be written in JAVA
- Several onconfig parameters including
  - ▶ JDKVERSION, JVPJAVAHOME, and JVPLOGFILE



## IDS 9.40 Common Problems

- Problem: Customer Attempted to load the following into a single directory: Tools 7.32.UC1; SDK 2.81.UC2; IDS 9.40.FC2
- Solution: 64-bit products should be installed in a different directory than any 32-bit products
- Problem: Windows 2000
  - ▶ Build SMI fails with permission problems
  - ▶ Customer created Informix Account & Group
- Solution:
  - ▶ Uninstall
  - ▶ Delete Informix Account & Group
  - ▶ Reinstall and allow install to create necessary users and groups
- Problem: Upgrading from 9.30 one database did not convert because it did not have enough space.
- Solution:
  - ▶ Level 0 Restore
  - ▶ Add adequate space prior to initiating restore



## Quick Summary

- IBM IDS has a built-in automatic migration and reversion utilities
- Lots of new features have been added to the 9.x versions to enhance the product in both performance and functionality
- IBM has an interest in continuing to enhance IDS well into the future



## Where to Get More Information

- Check <http://www.ibm.com/training/us> for more classes on 9.x features and administration
- Feel free to email me with questions and comments about today's web-cast
  - ▶ Email: [jbohm@us.ibm.com](mailto:jbohm@us.ibm.com)



# Informix – WebSphere integration

- IBM Informix Dynamic Server (IDS) is certified with WebSphere!\*

## WebSphere software

WebSphere Application Server  
WebSphere Express  
WebSphere Portal Enable  
WebSphere Portal Extended  
WebSphere Portal Express (multi-platforms)\*\*  
WebSphere MQ Series  
WebSphere Studio Site Developer  
WebSphere Studio Application Developer  
WebSphere Studio App. Dev. Integration Edition  
WebSphere Studio Enterprise Developer

\* Some products not certified with all releases of IDS

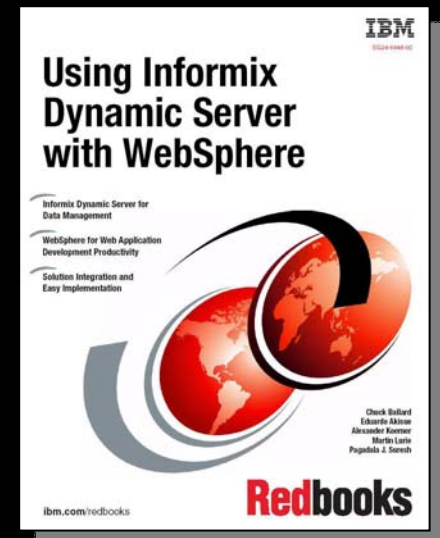
\*\*scheduled to be certified Q303

For more information: [www.ibm.com/informix/websphere](http://www.ibm.com/informix/websphere)

## The First IBM Informix **Redbook!**

- Covers all IDS / WebSphere Topics
- Lots of step-by-step examples (example code downloadable)
- Based on Linux and Windows
- Download at: **ibm.com/redbooks**

► **Redbook ID: SG24-6948**



# *Thank you!*

Official question time.....

## Questions????

### **Websites for more information:**

- Informix Dynamic Server (IDS) [ibm.com/informix/ids](http://ibm.com/informix/ids)
- IBM Information Mgt. Software [ibm.com/software/data](http://ibm.com/software/data)
- Informix home page [ibm.com/informix](http://ibm.com/informix)
- Informix Portfolio White Paper [ibm.com/informix/whitepaper](http://ibm.com/informix/whitepaper)
- Product Life Cycle [ibm.com/informix/support/plc/](http://ibm.com/informix/support/plc/)
- Informix Users Groups [www.iiug.org](http://www.iiug.org)
- DeveloperWorks – Informix Section [www7b.software.ibm.com/dmdd/zones/informix/](http://www7b.software.ibm.com/dmdd/zones/informix/)

