

IMS Product Development

Call to the Field



Bob Gilliam

IMS Product Manager

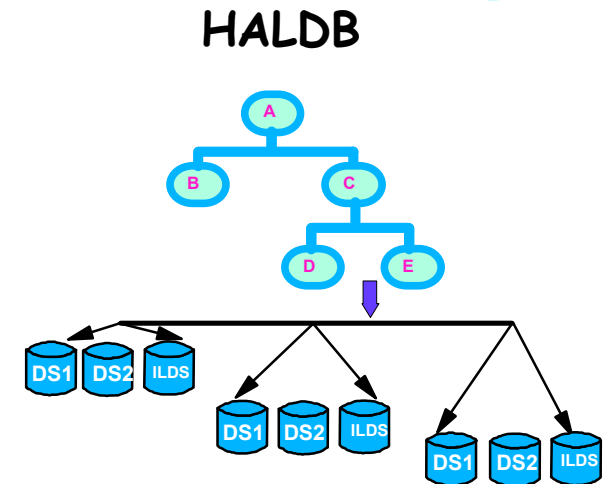
October 29th, 2002

HALDB (High Availability Large Database)



Large Database

- Databases are partitioned
 - Up to 1001 partitions per database
 - Partitions have up to 10 data set groups



High Availability Database

- Partition independence
 - Allocation, authorization, reorganization, and recovery are by partition
- Self healing pointers
 - Reorganization of partition does not require changes to secondary indexes or logically related databases which point to it
 - Prefix Resolution, Prefix Update, and secondary index rebuilds are eliminated

Up to 10,010 data sets per database!
(Greater than 40 terabytes)

IMS Java for Integrated e-business Application Development/Connectivity



■ Application programmer productivity

- Java access to IMS input/output message queues
- JDBC to access IMS data
- Uses Visual tools for development

JDBC = Interoperability for Application Developers

■ Enhancements

- New Java Dependent Region support for Persistent Reusable Java Virtual Machine
- JDBC access to IMS DB from CICS/390 Java applications, DB2/390 Stored Procedures, and Websphere applications
- COBOL - Java Interoperability in Java dependent regions

IMS Is Ideal For e-business



- IMS is ideally suited to be the backbone of your e-business solutions:
 - **IMS is secure**
 - z/OS and IMS offer significant security options
 - **IMS is scalable with high performance**
 - The Internet can introduce unpredictable volumes
 - IMS already drives the worlds largest workloads
 - **IMS is highly available**
 - The Internet requires 24 x 7 x 365
 - **e-business with IMS offers investment protection**

Linux enabled !!!
... run your e-business applications
on Linux and connect through IMS Connect



October 2002

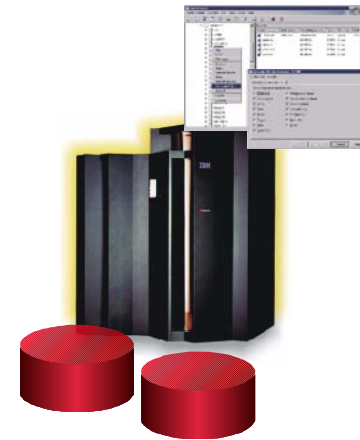


IMS V8 - General Availability

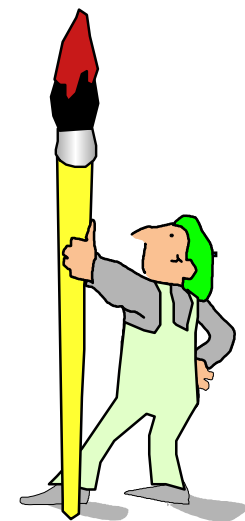
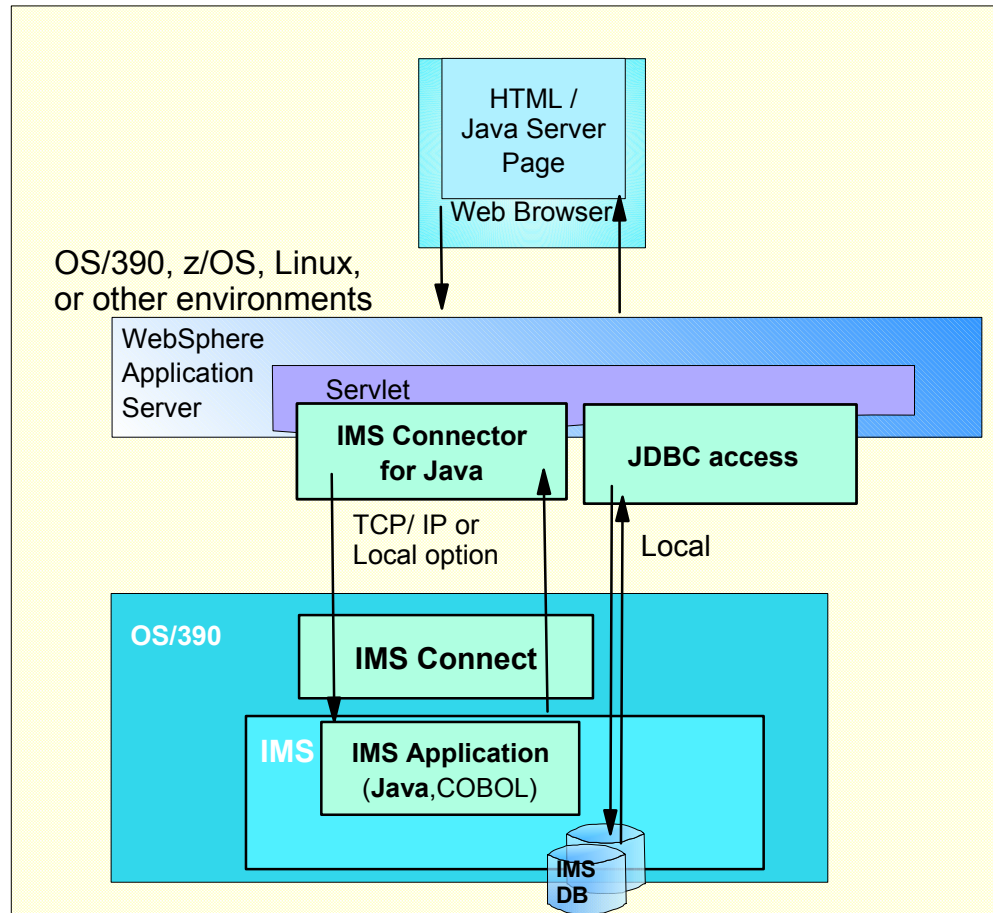
- Information **"Integration"** with New Application Development/Connectivity
 - ✓ Support of Persistent Reuseable JVM for improved tooling
 - ✓ Support for latest JAVA and SQL Standards
 - ✓ Integration with Websphere
 - ✓ Enhanced XML Support of Messages

- **Manageability**
 - ✓ Management View across Sysplex
 - Single Point Of Control (SPOC)
 - DB2 Control Center Integration
 - ✓ Enhanced Recovery
 - ✓ Sysplex Terminal Options

- **Scalability** in Performance/Capacity/Availability/Recovery
 - ✓ Increased performance with Shark DASD
 - MSC throughput
 - OLDS logging
 - ✓ Increasing FastPath Areas from 240 to 2048
 - ✓ CSA reduced usage by almost 50%
 - ✓ Shutdown 20% faster, Startup to ready state over 50% faster



Application Development/Enablement



IMS V8 - General Availability

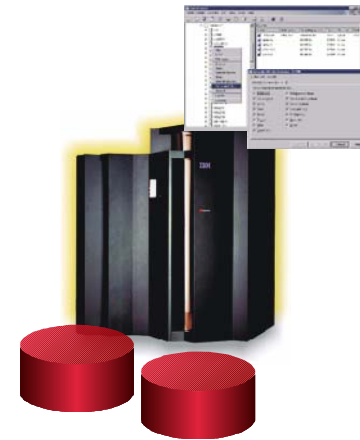


● Information Integration with New Application Development/Connectivity

- ✓ Support of Persistent Reuseable JVM for improved tooling
- ✓ Support for latest JAVA and SQL Standards
- ✓ Integration with Websphere
- ✓ Enhanced XML Support of Messages

● "Manageability"

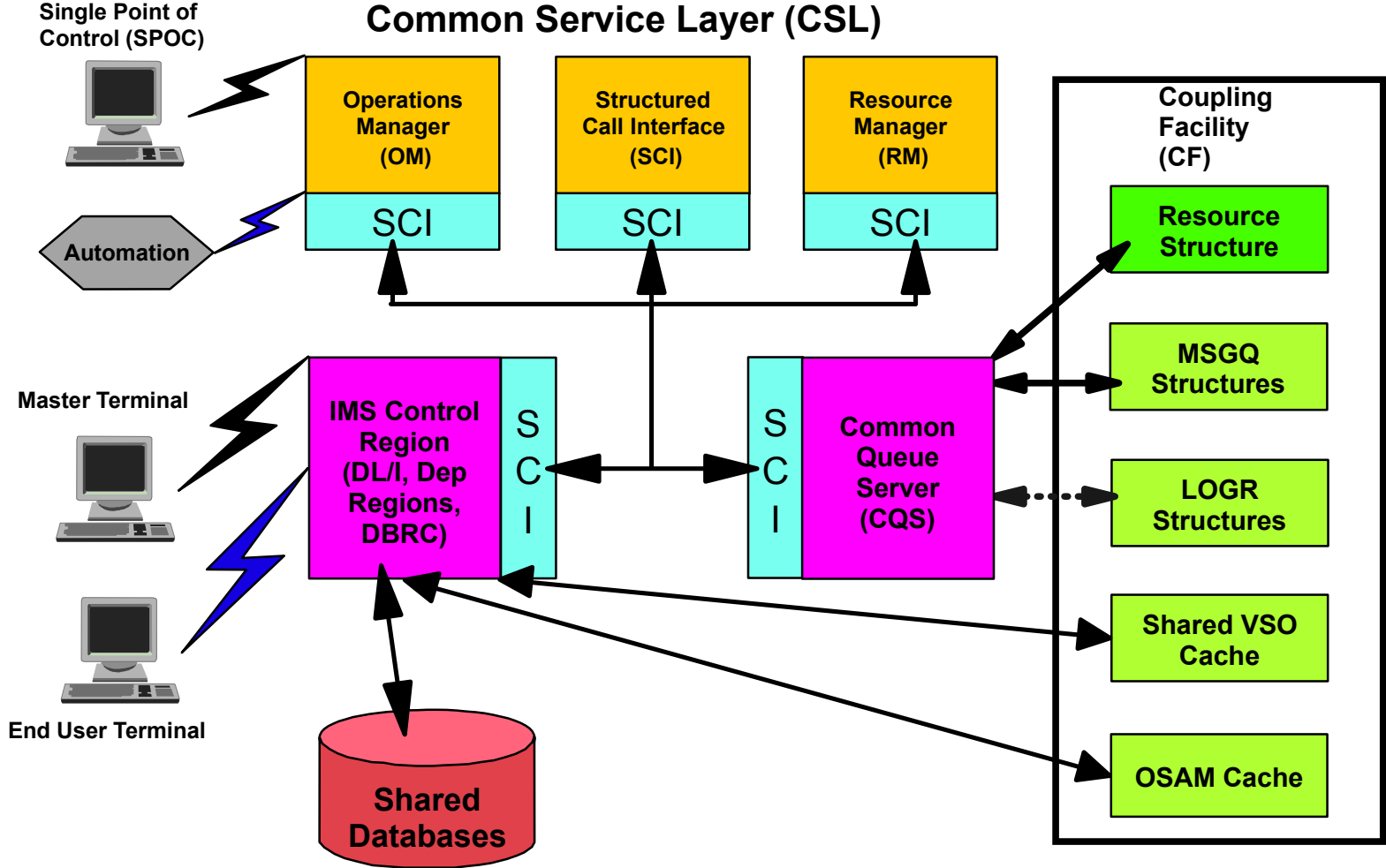
- ✓ Management View across Sysplex
 - Single Point Of Control (SPOC)
 - DB2 Control Center Integration
- ✓ Enhanced Recovery
- ✓ Sysplex Terminal Options



● Scalability in Performance/Capacity/Availability/Recovery

- ✓ Increased performance with Shark DASD
 - MSC throughput
 - OLDS logging
- ✓ Increasing FastPath Areas from 240 to 2048
- ✓ CSA reduced usage by almost 50%
- ✓ Shutdown 20% faster, Startup to ready state over 50% faster

IMS V8 Sysplex Management



IMS V8 - General Availability

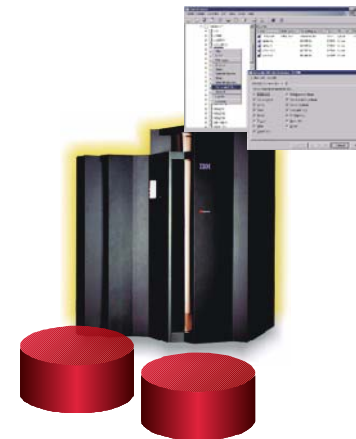


● Information Integration with New Application Development/Connectivity

- ✓ Support of Persistent Reuseable JVM for improved tooling
- ✓ Support for latest JAVA and SQL Standards
- ✓ Integration with Websphere
- ✓ Enhanced XML Support of Messages

● Manageability

- ✓ Management View across Sysplex
 - Single Point Of Control (SPOC)
 - DB2 Control Center Integration
- ✓ Enhanced Recovery
- ✓ Sysplex Terminal Options



● "Scalability" in Performance/Capacity/Availability/Recovery

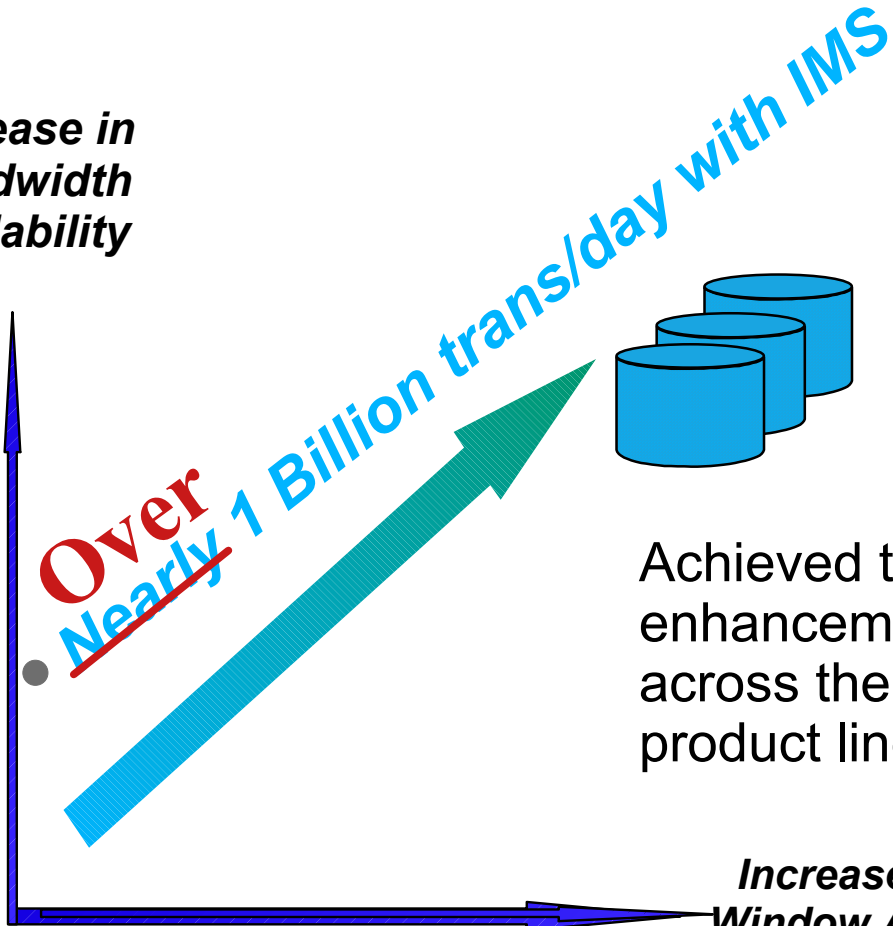
- ✓ Increased performance with Shark DASD
 - MSC throughput
 - OLDS logging
- ✓ Increasing FastPath Areas from 240 to 2048
- ✓ CSA reduced usage by almost 50%
- ✓ Shutdown 20% faster, Startup to ready state over 50% faster

IMS Scaling with SHARK

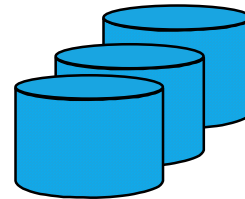
Performance/CapacityAvailability/Recovery'



Increase in
Bandwidth
Availability



IMS tight integration with
IBM Storage Take advantage
of PAV !!



Achieved thru
enhancements
across the IBM
product line.



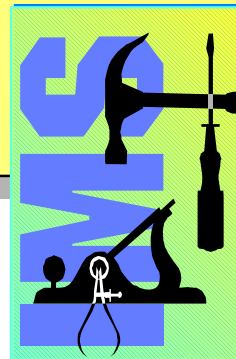
IMS Tools Portfolio



Database Administration

- ▶ **IMS High Performance Unload 5655-E06**
- ▶ **IMS High Performance Load 5655-E07**
- ▶ **IMS High Performance Prefix Resolution 5655-I15**
- ▶ **IMS Index Builder V2R3 5655-E24**
- ▶ **IMS Parallel Reorganization V2 5655-F74**
- ▶ **IMS High Performance Pointer Checker 5655-E09**
- ▶ **IMS Data Base Repair Facility 5655-E03**
- ▶ **IMS High Performance Sysgen Tool 5655-F43**
- ▶ **IMS Command Control Facility 5655-F40**
- ▶ **IMS ETO Support 5655-E12**
- ▶ **IMS Library Management Utilities 5655-E04**
- ▶ **IMS Advanced ACBGEN 5655-E05**
- ▶ **IMS Sequential Randomizer Generator 5655-E11**
- ▶ **IMS Compression - Extended 5655-E02**
- ▶ **IMS Data Base Control Suite V2R2 5655-F76**
- ▶ **IMS Fast Path Basic Tools 5655-E30**
 - DEDB Unload/Reload
 - DEDB Pointer Checker
 - DEDB Tuning Aid
- ▶ **IMS Fast Path Online Tools V2 5655-F78**
 - Online Pointer Checker
 - Online Data Extract
 - Online Area Extend
- ▶ **IMS HALDB Conversion Aid 5655-I01**
- ▶ **IMS Batch Backout Manager 5697-H75**

*Manage
Automate
Monitor
Tune...*



Performance Management

- ▶ **IMS Performance Analyzer 5655-E15**
- ▶ **IMS Network Compression Facility 5655-E41**
- ▶ **IMS Queue Control Facility 5697-E99**
- ▶ **IMS Workload Router V2R3 5697-B87**
- ▶ **IMS Buffer Pool analyzer 5697-H77**

Recovery / Replication

- ▶ **IMS Image Copy Extensions 5655-J56**
- ▶ **IMS DEDB Fast Recovery 5655-E32**
- ▶ **Application Recovery Tool for IMS and DB2 Databases 5697-F56**
- ▶ **Online Recovery Service 5655-E50**
- ▶ **IMS Data Propagation 5655-E52**
- ▶ **IMS High Performance Change Accumulation 5655-F59**

Application Management

- ▶ **IMS Connect 5655-E51**
- ▶ **IMS Message Format Services Reversal Utilities 5655-F45**
- ▶ **IMS Program Restart Facility 5655-E14**
- ▶ **Batch Terminal Simulator 5655-J57**

New/Enhanced IMS Tools



Announced September 2002:

- **Application Recovery Tool for IMS and DB2 Databases V1R2** - HALDB and Sysplex Sharing enhancements
- **IMS Index Builder V2 R3** - availability/usability enhancements
- **IMS Batch Backout Manager V1** - enhances database availability
- **IMS Buffer Pool Analyzer V1** - provides information and helps determine impact of buffer pool changes
- **IMS Database Control Suite V2R2** - performance, usability, productivity, recovery, and Tools integration enhancements
- **IMS DEDB Fast Recovery V2R2** - shortens the recovery time
- **IMS Performance Analyzer V3R2** - enhances reporting, dialog and documentation.
- **IMS Batch Terminal Simulator V3** - enhanced auditing and support for Java and new technologies
- **IMS Image Copy Extensions V2** - creates new copy data sets from the IMS Image Copy data set.
- Service Stream enhancements delivering 2H2002
 - **IMS Connect V1R2 enhancements**

Additional Information on IMS Version 8

- **Available Redbooks** - [http:// publib-b.boulder.ibm.com](http://publib-b.boulder.ibm.com)
 - ▶ IMS Version 8 Implementation Guide A Technical Overview of the New Features SG24-6594-00
 - ▶ IMS Installation and Maintenance Processes SG24-6574-00

- **Download from <http://www.ibm.com/software/data/ims>**
 - ▶ IMS Version 8 , a scripted Freelance or PDF presentation
 - ▶ IMS V8 Fact Sheet - 7 page overview
 - ▶ IMS V8 Release Planning Guide - 279 page in-depth description

IMS Version 8
ibm.com Introductory Promotion
North America (only)
<http://www.ibm.link.ibm.com>
Marketing Announcement 302-195

- Upgrade to IMS Version 8
 - ▶ order placed by December 13, 2002

- As a premium , receive either:
 - ▶ a one-day on-site Migration Assistance Package (approximate value: \$6,000 USD, \$9,370 CDN)

or

 - ▶ two enrollments at a three-day Installation and Management Workshop for IMS Version 8 at Silicon Valley Lab (approximate value: \$5,000 USD, \$7,612 CDN).
travel and living expenses for attendees not included.

- For ordering, contact:
 - ▶ Your IBM representative, an IBM Business Partner, or IBM Americas Call Centers at 800-IBM-CALL (Reference: LE002).



Search

[Home](#) | [Products & services](#) | [Support & downloads](#) | [My account](#)

→ [Select a country](#)

All Software Products

IMS Family

- Library
- Success stories
- News
- How to buy
- Events
- Education
- Services
- Support

Related software

- CICS
- DB2
- WebSphere
- WebSphere MQ Family

Related hardware

- Storage systems
- zSeries

Related services

- zSeries Publications
- IBM Learning Services
- Warranty info

Software > Database and Data Management >

IMS Family

IBM's premier transactional and hierarchical database management system for critical on-line operational and e-business applications and data, enabling Information Integration, Management, and Scalability.

Select a Product

Products

- **IMS®**
IBM's premier transactional and hierarchical database management system for critical on-line operational and e-business applications and data.
- **IMS Connect**
A must-have tool for any IMS shop embarking on e-business, IMS Connect improves TCP/IP access and enables easier access to IMS applications and data from the internet.
- **IMS Connector for Java**
IMS Connector for Java, a component of IMS Connect, allows you to rapidly create and run Java applications to access IMS transactions over the internet through IMS Connect.

Tools and components

- **Data Management Tools**
IBM Data Management tools are specifically designed to enhance the performance of IMS and DB2 in an affordable and easy-to-use manner.

Events

- [IMS Technical Conference](#)
Sept 30 - Oct 3, 2002
St. Louis, MO
- [EMEA IMS Technical Symposium](#)
Oct 15-17, 2002
Koenigswinter, Germany

Featured Customer

DB2 Data Management Software

→ [Buy online](#)



Highlights

- [Overview](#)
- [Presentation/papers](#)
- [Redbooks](#)
- [New News](#)

Communities

- [Receive Recent IMS news](#)
- [IMS Newsletter](#)
- [IMS User Groups](#)