

Enterprise Connection TeleConference

Feb 28th, 2002



www.ibm.com/ims

Bob Gilliam

IMS Family Product Manager
IBM Silicon Valley Laboratory

IBM Data Management team

• Research & Development	>2,500
• Marketing & Sales	>1,000...2,000
• Business Partners	>10,500



Teamwork across locations and platforms

IBM: *The Fastest Growing DM Company*

2001 Business performance update...

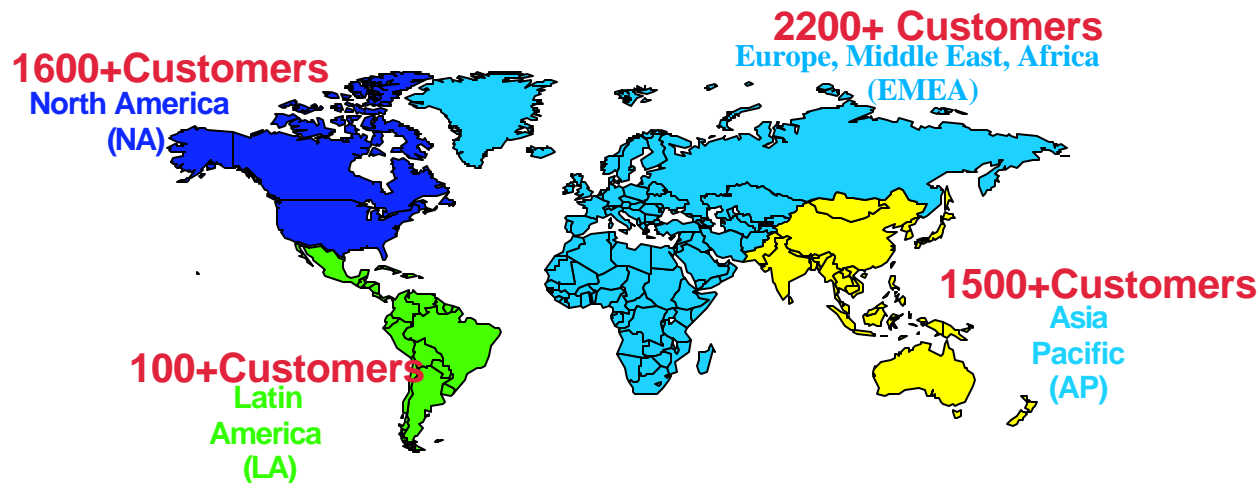


YTY WW Revenue Growth 2001

▶ IMS + DB2 for OS/390	+13%
▶ DB2 Distributed	+19%
▶ IMS + DB2 for OS/390 Tools	+205%
▶ IBM Database Overall	+23%

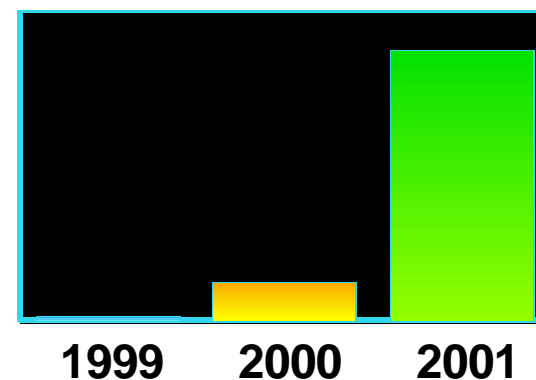


IMS: The World Depends on it



- Double-digit IMS Revenue Growth in 2001
- 2 yr IMS Mips Growth +27%
- IMS V7 install rate is 25% faster than earlier versions

IMS V7 License Growth



IMS Runs the World...

■ Most Corporate Data is Managed by IMS

- Over 95% of Fortune 1000 Companies use IMS
- IMS Manages over 15 Billion GBs of Production Data
- **\$2.5 Trillion/day** transferred thru IMS by one customer

■ Over 50 Billion Transactions a Day run through IMS

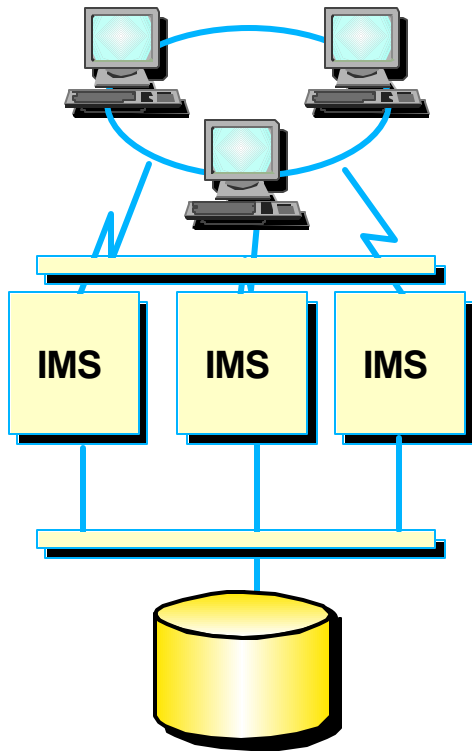
- IMS Serves Close to 200 Million Users a Day
 - Over **100 Million** IMS Trans/Day Handled by One Customer on Single Production Sysplex
 - 120M IMS Trans/day, 7M per hour handled by one customer
 - **6000** Trans/sec across TCP/IP to single IMS
 - 11,200 Trans/sec (nearly 1 Billion/day) with IMS Data/Queued sharing on a 2-CEC Sysplex
- 12/2001 CICS / IMS DB customer experienced 495 trans/sec sustained over 14 hrs and averaged over 99.99% system availability for 2001

■ **Gartner Group:** "A large and loyal IMS installed base. Rock-solid reputation of a transactional workhorse for very large workloads. Successfully proven in large, Web-based applications. IMS is still a viable, even unmatched, platform to implement very large OLTP systems, and, in combination with Web Application Server technology, it can be a foundation for a new generation of Web-based,

IMS - Version 7

Ideal for e-business

- ✓ Continuous Availability
- ✓ Systems Management
- ✓ Performance/Capacity
- ✓ Application Development/Connectivity



Strategic Open Access
S/390 and z/OS
Enterprise Server

Enhancements

- Extended Large DB support
- Enhanced DB recovery
- Faster Restart with Multinode Persistent Sessions
- Enhanced Systems Mgmt Tools
- Enhanced Connectivity
- IMS Java & XML

Benefits

- ✓ Enable Customer Growth
- ✓ Enhance Workload Balancing
- ✓ Increase Availability; Ease of Use
- ✓ Preserve Current Application Investment
- ✓ Enable New Applications

IMS Version 7 Status

- **General Availability 10/27/00 IMS V7**
 - Enhancements provided since GA
 - Stable base for the Future
- **Education and Services Available**
 - New Redbooks Available
 - Online Information at ibm.com/ims

IMS V7 Enhancements	Available in
OSAM/Log buffers above 2GB bar	PQ42127
Fast Path storage above the 2GB bar	PQ51419
250 OSAM Database Buffer Subpools	PQ41126
Providing Signon screen after LUSTAT x"082b'	PQ42530
Including the TCP/IP address in IMS messages	PQ41143
IMS External Subsystem Attach for DB2 Groups	PQ42180
Secondary index migration to HALDB	PQ37015
ILDS creation in HD Reload Utility	PQ36991
DFSMAID0	PQ37127
Recon Partition List Command support	PQ38822
Batch command initialization of HALDB and associated partitions	PQ35893 PQ44468
Unconditional HALDB Partition Initialization	PQ49638
JDBC access to IMS DB from CICS/390 and DB2/390 environments	PQ54548
System Log Data Set (SLDS) Read Support	PQ50657
Provide Websphere access to IMS DB	PQ57320

ORS Enhancements	Available in
Stacked image copy support	PQ42443, PQ46522, PQ47471, PQ51623
Compressed Image copy support	PQ47216
Stacked log data set support	PQ45321

IMS Connect 1.1 Enhancements	Available in
Local Support	PQ45057, VAJ 3.5.3 + JR15813
Unicode Support	PQ47906
ACK/NAK required notification support	PQ46195
Output message structure change	PQ48182

IMS V7 Quality Measurement

First Year After Availability

Code Quality	Tracking 38% better than V6
Customer Satisfaction Survey	Improved
Scalability	Improved
HALDB	
IMS Connect	
Recovery	
Functionality	Improved

V7 Installation Quote from Pitney Bowes:

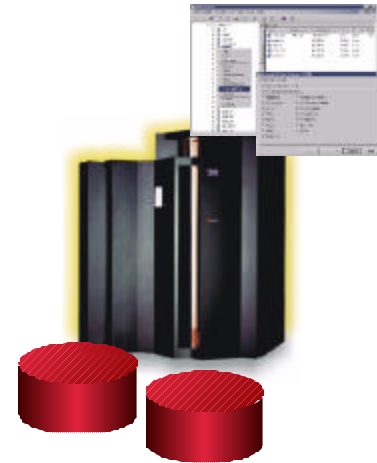
"...Just wanted to make a comment on the Install Process for IMS [V7]. This is the best I've used over the last few years. I am comparing it (IMS V7 Installation) to other IBM Products as well as other Vendors. IMS (V7) is a pleasure! Another person at our place has been looking over my shoulder for this install so that he can pick up some of the IMS support. He has also made the comment that this process is the best he has worked with."

Ron Mahoney, Pitney Bowes



IMS V7 Function Expands

- Information **Integration** with New Application Development/Connectivity
 - ✓ Ease/broaden user access
 - ✓ Web, Java, XML and Linux access
 - ✓ Ease application developer effort
 - ✓ Auto-application-generation tools
- **Manageability**
 - ✓ Ease installation and operations efforts
 - ✓ High levels of security
 - ✓ End-to-end transaction integrity
 - ✓ Real time data currency
 - ✓ Highest code quality
- **Scalability** in Performance/Capacity/Availability/Recovery
 - ✓ Handling increasing workload
 - ✓ Handling unpredictable volumes
 - ✓ More hours for workload
 - ✓ Continuous up time for applications and user access

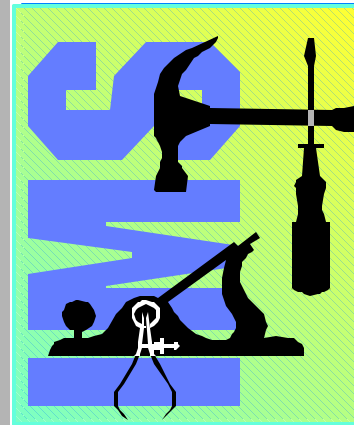


IMS Tools Product Portfolio

**Manage
Automate
Monitor
Tune...**

IMS Administration

- ▶ **IMS High Performance Unload 5655-E06**
- ▶ **IMS High Performance Load 5655-E07**
- ▶ **IMS High Performance Prefix Resolution 5655-E08**
- ▶ **IMS Index Builder 5655-E24**
- ▶ **IMS Parallel Reorganization V2 5655-F74**
- ▶ **IMS High Performance Pointer Checker 5655-E09**
- ▶ **IMS Data Base Repair Facility 5655-E03**
- ▶ **IMS High Performance Sysgen Tool 5655-F43**
- ▶ **IMS Command Control Facility 5655-F40**
- ▶ **IMS ETO Support 5655-E12**
- ▶ **IMS Library Management Utilities 5655-E04**
- ▶ **IMS Advanced ACBGEN 5655-E05**
- ▶ **IMS Sequential Randomizer Generator 5655-E11**
- ▶ **IMS Compression - Extended 5655-E02**
- ▶ **IMS Data Base Control Suite 5655-F76**
- ▶ **IMS Fast Path Basic Tools 5655-E30**
 - DEDB Unload/Reload
 - DEDB Pointer Checker
 - DEDB Tuning Aid
- ▶ **IMS Fast Path Online Tools V2 5655-F78**
 - Online Pointer Checker with optional Image Copy
 - Online Data Extract
 - Online Area Extender



Performance Management

- ▶ **IMS Performance Analyzer 5655-E15**
- ▶ **IMS Network Compression Facility 5655-E41**
- ▶ **IMS Queue Control Facility 5697-E99**
- ▶ **IMS Dynamic Resource Control Facility 5697-D14 (PSLC)**
- ▶ **IMS Workload Router 5697-B87 (PSLC)**

Recovery / Replication

- ▶ **IMS Image Copy Extensions 5655-E10**
- ▶ **IMS DEDB Fast Recovery 5655-E32**
- ▶ **IMS Recovery Saver 5655-E16**
- ▶ **DB2 Recovery Manager 5697-F56**
- ▶ **Online Recovery Service (ORS) 5655-E50**
- ▶ **IMS Data Propagation 5655-E52**
- ▶ **IMS High Performance Change Accumulation 5655-F59**

Application Management

- ▶ **IMS Connect 5655-E51**
- ▶ **IMS Message Format Services Reversal Utilities 5655-F45**
- ▶ **IMS Program Restart Facility 5655-E14**
- ▶ **Batch Terminal Simulator 5655-A14 (PSLC)**

IMS Directions

Continuous Improvement

IBM delivers at web speed...

IMS V8 Enhancements

- Extend DB Connectivity
- Enhance Sysplex Operations
- Enhance Availability/Recovery
- Increase Capacity
- Simplify Install Process
- Enhance Management Tools

IMS Today

- High Availability Large DB
- Rapid Restart
- Enhanced DB Recovery
- Enhanced Connectivity
- IMS Java Applications

IMS Goals

- Unlimited Growth
- 100% Accessible
- 100% Available
- GEN-Less System
- Dynamic Install
- Latest Technology

