



# B97

## Customer Presentation - IMS Tools Migration

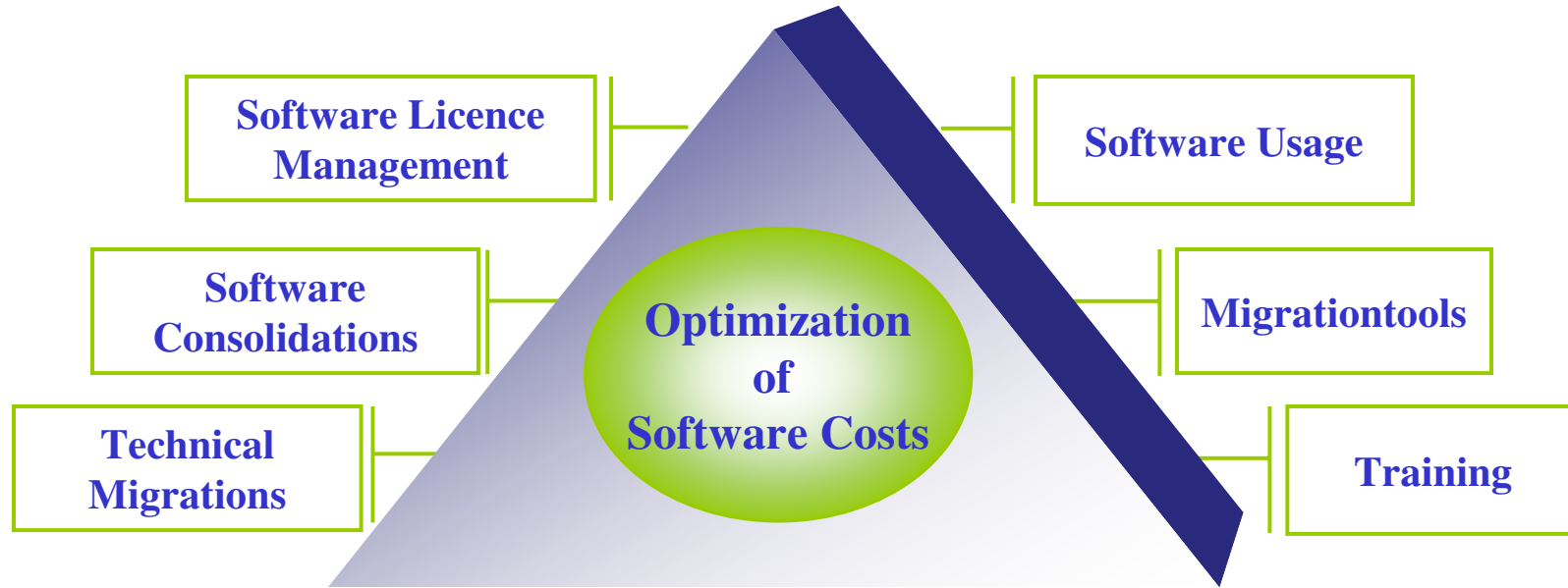
Helmut Englert, SE-Consulting GmbH



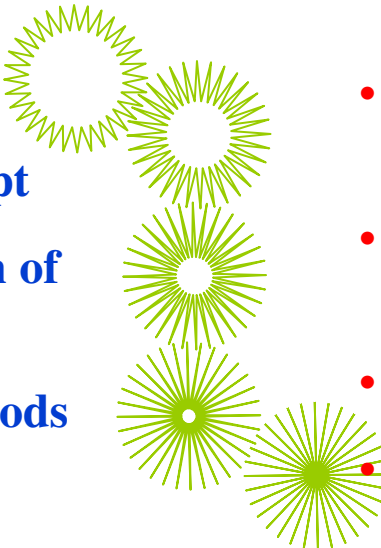
San Jose, CA

Oct. 10 - 13, 2005

## SE-Consulting GmbH



## From the plan ...

- technical project management
  - precise utilization analysis of existing products
  - migration and training concept
  - installation and customization of the software solution
  - adaptation of exits and usermods
  - product deployment
  - trainings
- 
- management of the technical workflow
  - cooperation with the software provider
  - adaptation to customer's environment
  - production preparation
  - quality assurance
  - handover to production

**... to production**

## What SEC did in the past ...

| from                | to      | number of projects | tasks   |
|---------------------|---------|--------------------|---|
| BMC Software        | IBM     | 4                  | Vendor Replacement<br>between 6 and 14 IMS products,<br>between 3 and 12 DB2-products,<br>MainView Automation |
| Computer Associates | IBM     | 3                  | Vendor Replacement<br>between 6 and 10 products   |
| Compuware           | IBM     | 3                  | Vendor Replacement<br>between 2 and 3 products  |
| Compuware           | Macro 4 | 2                  | Vendor Replacement<br>between 2 and 3 products  |

## **The Mission**

Replace all BMC-products within 24 months in all data centers in Germany matching T-Systems SLAs and solve special tasks like:

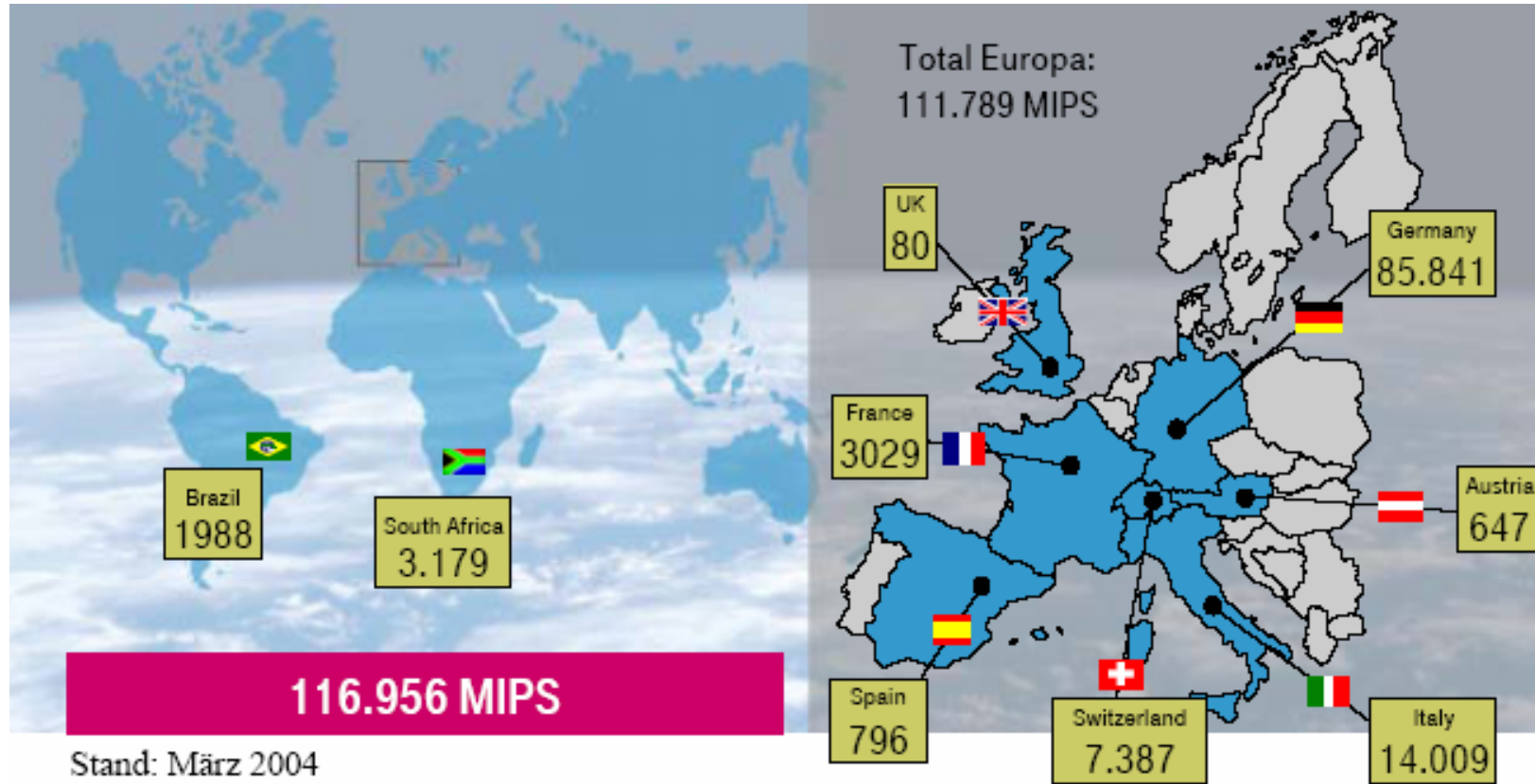
DB2 Recovery for SAP & IMS Accounting/Reporting

## **The Objective**

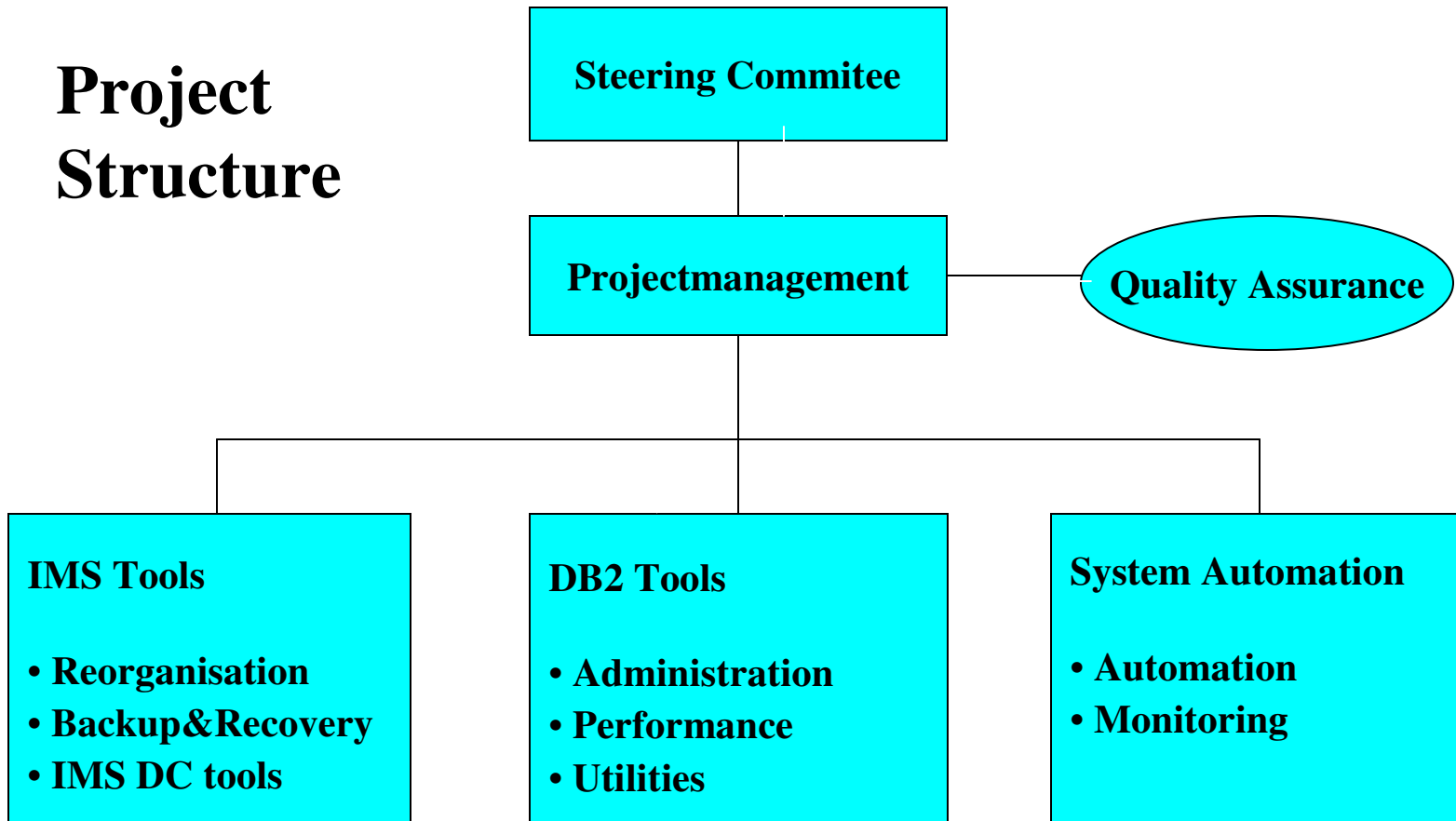
Reduction of software costs

## Some customer facts:

- 32 data processing centers with high bandwidth back bone
- z/OS capacity of 116.956 MIPS (March 2004)
- 31.365 Open System Servers
- Biggest network in Europe
- Workflow and services for over 97.000 workstations
- Biggest SAP-Installation in Europe
- Over 50 international outsourcing customers:  
Deutsche Telekom, Airbus, BLG, DaimlerChrysler, EADS,  
Henkel, MTU, Schufa, TechData, Unilever, ...



# Project Structure





## Project Progress

- until end of 2003: 21 IBM IMS-, 20 IBM DB2-, 2 IBM CICS solutions implemented
- by end of 2003: more than 250 T-Systems employees trained on IBM IMS & DB2 tools with internal courses
- by mid of 2004: all 150 IMS LPARs migrated
- by fall 2004: DB2 V8 ESP with System Recovery fully tested and implemented to replace the BMC solution named “Smart Recover for SAP”
- by end of 2004: IMS Accounting & Reporting (Mainview IMS Offline) replaced using CA NeuMICS



## Reference Project . . . . . T . . . Systems .



- May 2005: 3 SysPlexes migrated from BMC MainView Automation to Tivoli SA
- by mid of 2005: 190 of 250 DB2 LPARs migrated
- until today: several workarounds developed to provide same functionality as BMC products

## **Project Documentation**

- Checklists of implementation deepness (used functions)
- Test plans & scenarios
- Project plans
- SLAs & acceptance criteria
- Benchmarks
- Documentation of technical problems & requirements
- Status presentations
- Change Management

## Migrated IMS Tools

| BMC Product  | IBM Product   |
|--|---|
| <b>IMS DC/IMS TM</b>                                       | <b>IMS DC/IMS TM</b>  |
| Data Packer IMS  | IBM IMS HD Compression Extended   |
| Message Advisor for IMS                                    | IBM IMS Queue Control Facility  |
| Ultraopt/IMS   | IBM IMS Network Compression Facility  |
| Database Integrity Plus                                    | IBM IMS Library Integrity Utilities   |
| Extended Terminal Assist Plus & Delta IMS/Virtual Terminal | IBM IMS Extended Terminal Option Support                                      |
| Delta IMS & DeltaPlex                                      | IBM IMS Command Control Facility<br>IBM IMS High Performance Sysgen Utilities |
| <b>IMS Database Reorganization</b>                         | <b>IMS Database Reorganization</b>  |
| Fast Reorg Facility/EP                                     | IBM IMS Parallel Reorganization   |
| Unload Plus/EP for IMS                                     | IBM IMS High Performance Unload   |
| Loadplus/EP for IMS  | IBM IMS High Performance Load   |
| Secondary Index Utility/EP                                 | IBM IMS Index Builder   |
| <b>IMS Backup&amp;Recovery</b>                             | <b>IMS Backup&amp;Recovery</b>  |
| Image Copy Plus  | IBM IMS Image Copy Extensions   |
| Recovery Plus for IMS                                      | IBM IMS Image Copy Extensions   |
| Pointer Checker Plus                                       | IBM IMS High Performance Pointer Checker                                      |
| Change Accumulation Plus                                   | IBM IMS High Performance Change Accumulation                                  |

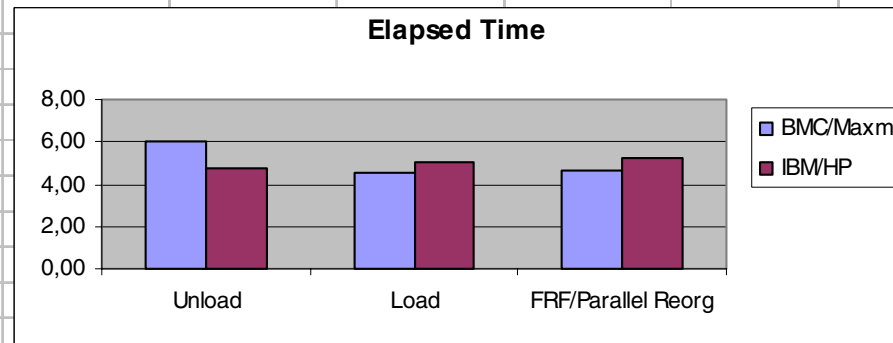
## Lessons learned

- **Benchmarks**
  - Static runtime environment
  - Adjust default settings to have comparable results
  - Bitmap issue
- **Image Copy Compatibility**
  - Compressed IC
  - Special considerations to decompress image copies
- **User Exits**
  - Exit interfaces
  - Return code exit
- **User Defined Unload Formats**

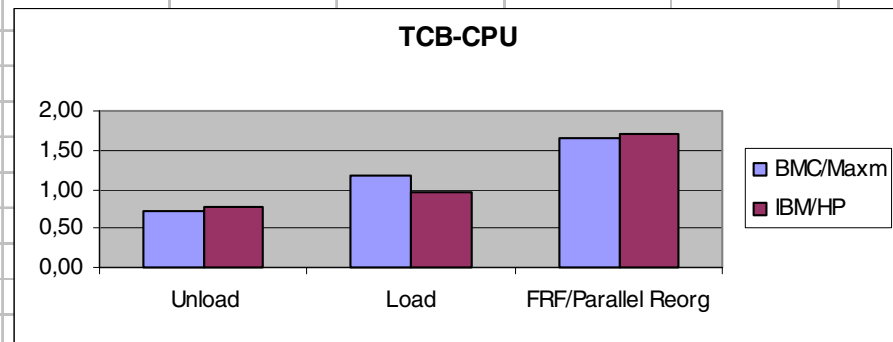
# Benchmark

## HIDAM/OSAM with 49.341 Mio Segments

| Elapsed Time (min) | BMC/Maxm | IBM/HP |
|--------------------|----------|--------|
| Unload             | 6,02     | 4,73   |
| Load               | 4,54     | 5,02   |
| FRF/Parallel Reorg | 4,65     | 5,26   |



| TCB-CPU Time (min) | BMC/Maxm | IBM/HP |
|--------------------|----------|--------|
| Unload             | 0,72     | 0,78   |
| Load               | 1,17     | 0,96   |
| FRF/Parallel Reorg | 1,66     | 1,72   |



## Migration Tools & Addons

- **ETA TSS Converter**
  - Convert ETA or DELTA/VT terminal definitions to ETO Support
- **Mainview AutoOperator Rules Analyzer**
  - Analyze the AutoOperator rules dataset
- **SMF Record Analyzer**
  - Identify jobs run with BMC utilities by analyzing SMF records
- **JCL Converter**
  - Convert JCL and utility control statements
  - Using different sources
  - Analyze Job Scheduler definitions

## Migration Tools & Addons cont.

- IMS Pointer Checker Extension
  - ISPF interface to IBM's Pointer Checker
  - Threshold monitoring for IMS databases
- Variable Unload Formats
  - Unload, Sort, Reload of IMS databases in various formats





Reference Project ..... T ..... Systems



**Any Questions?**