

# *re-think what's possible*

*"Successfully proven in large, Web-based applications. IMS is still a viable, even unmatched, platform to implement very large OLTP systems, and, in combination with Web Application Server technology, it can be a foundation for a new generation of Web-based, high-workload applications."*

*– Gartner Group*

# IMS & SOA

*With IMS™ and SOA, you can reuse your existing assets to offer new services quickly.*

To adapt quickly to the constantly changing global marketplace, businesses require IT systems that combine speed, reliability, and efficiency. For companies around the world, IMS provides the technology to keep critical applications running non-stop.

The IMS Service Oriented Architecture (SOA) Integration Suite offers capabilities to extend and reuse valuable assets managed by IMS. When you couple the speed and reliability of IMS with the flexibility of SOA –

*It's time to re-think what's possible.*

IMS has proven that it can handle complex transactions and high workloads over the last 40 years. And while many products claim high transaction rates, none matches the efficiency of IMS. Today, this scalability helps clients maintain high responsiveness to constantly changing environments. Many companies routinely run millions of IMS transactions per day:

- At an IBM lab, a single instance of IMS 10 completed 22,000 transactions per second, translating to high throughput (transactions per second) and low cost (MIPS per transaction).
- One U.S. shipping company completes 200 million IMS transactions per day that originate from various application servers, including external sources. Despite trying other systems, the company found that only IMS reliably handles that volume of data and meets their required response time goals.
- Several large companies run over 100 million transactions per day.

In high performance computing, IMS is:

- fast
- green
- reliable

*IBM System z10™ uses 85% less energy than earlier versions and runs the same workload as 300 UNIX® boxes.*

IMS is a mission-critical business processing environment, and its resilience provides a stable, reliable production environment. This reliability means that IMS is always ready for business. IMS proactively prevents outages instead of waiting for them to occur:

- In a banking demonstration, an IMS system using standard functions, and running 4,000 transactions per second, was stopped. IMS automatically moved to work on another IMS image, without a disruption in service.
- IMS supports mission-critical applications addressing FAA flight plans and aircraft maintenance for one large company in the southern U.S. An outage, which would ground the company, has never occurred.
- Several companies report going thousands of days without an unplanned outage. One Canadian bank reports 99.998% availability over 10 years, and only 1.5 hours of planned outages.



## *Enable IMS services*

- Access existing IMS business logic with industry standard Web services
- Enable IMS as both a provider and a consumer of Web services
- Use industry standard Java™ EE applications to access existing IMS business logic
- Include IMS assets as part of your Web mashups
- Write new IMS applications in Java
- Provide rapid IMS application development and deployment, using Rational® tools

## *Access IMS information*

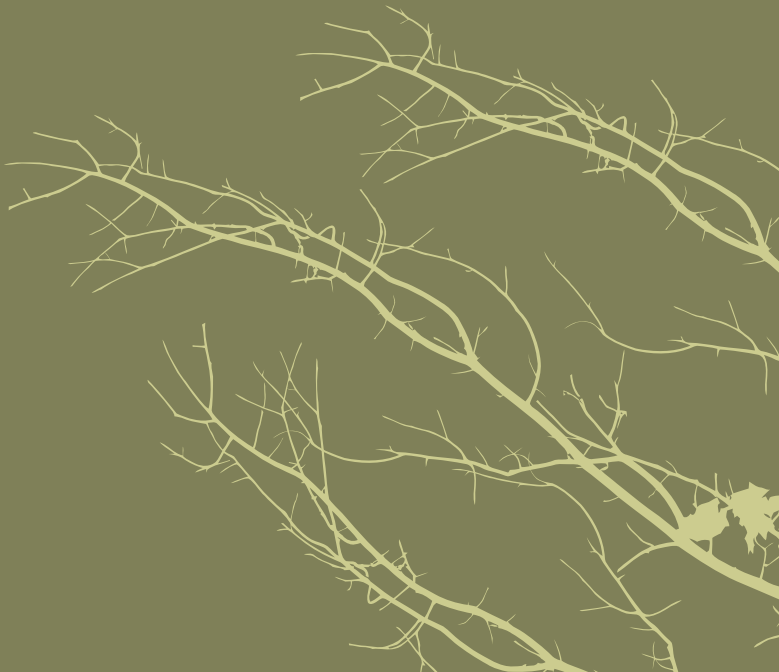
- Access IMS databases from any system, anywhere, including AIX®, Linux® on System z™, Linux, HP-UX, Sun Solaris, z/OS®, and Windows®
- Use industry standard Java EE or JDBC applications to access IMS databases
- Store and retrieve XML documents in IMS databases
- View IMS databases with graphical tooling that simplifies application and Web service development
- Provide rapid IMS application development and deployment, using Rational tools

SOA is a business-centric IT architectural approach that facilitates the reuse of existing assets. SOA allows for open, standard interfaces that provide any data source solution package access to any other solution package. The scalability of SOA and IMS enables your business to grow.

*SOA enablement and scalability:*  
**open seamless reusable**  
*and you already own it!*

Get more from your IMS investment by using the tools and functions of the IMS SOA Integration Suite and re-think what's possible:

- **Open:** The IMS SOA Integration Suite uses the standard protocols of SOA. IMS is a provider and a consumer of services, because IMS can access any platform, and any platform can access IMS.
- **Seamless:** The integration of new application development into an existing application integrated development environment is seamless. Leverage skills that already exist because programmers need not learn IMS to use the tools.
- **Reusable:** Leverage existing IMS assets, utilize existing programming skills, and modernize existing IMS applications by using IMS technology, while opening IMS data and applications to SOA protocols. Instead of rewriting IMS code in newer programming languages, reuse the code, providing time-tested functions with stable code.



# Embrace IMS and SOA now

SOA liberates business constraints by restructuring existing services so that future growth is faster, easier, and more affordable. The flexibility and agility of the IMS SOA Integration Suite help businesses respond to customer demands for new services and enter new markets more quickly.

*Did we mention that you already own it?*

You can derive more from your current IMS investment by using the IMS SOA Integration Suite.

- IMS SOA Integration Suite is included in IMS Version 9 and later, at no additional cost.
- Improve programmer productivity and reduce your company's maintenance and application backlog, in turn shifting development focus from maintenance to application development.
  - » A financial institution in the U.S. used SOA to eliminate duplicate business logic and reduce IT maintenance costs by allowing their four million customers to access their accounts online.
- IBM IMS Tools and Tivoli® tools can help to manage your SOA systems, improving staff productivity and helping you meet service-level goals.
  - » A manufacturing company in Europe uses Web browsers to view existing data. The Web browsers are easier to use and retain complete security and control of the data with IMS.
- Solutions can be deployed rapidly, which means a faster time to market.
  - » A bank in central Europe was able to develop a new WebSphere® Application Server Web service quickly and reuse approximately 80% of existing IMS-based services.
  - » A European bank was able to seamlessly integrate Java workload into their banking system within one month.

*Learn more about IMS SOA Integration Suite  
at [www.ibm.com/software/data/ims/toolkit](http://www.ibm.com/software/data/ims/toolkit)*

For more information about IMS products and the latest news about IMS, visit [www.ibm.com/software/data/ims](http://www.ibm.com/software/data/ims)

© Copyright IBM Corporation 2008  
IBM Silicon Valley Laboratory  
555 Bailey Avenue  
San Jose, CA 95141  
U.S.A.  
Produced in the United States of America  
September 2008  
All Rights Reserved

IBM, the IBM logo, and [www.ibm.com](http://www.ibm.com) are trademarks or registered trademarks of International Business Machines Corporation in the United States, other countries, or both. If these and other IBM trademarked terms are marked on their first occurrence in this information with a trademark symbol (® or ™), these symbols indicate U.S. registered or common law trademarks owned by IBM at the time this information was published. A current list of IBM trademarks is available on the Web at Copyright and trademark information at <http://www.ibm.com/legal/copytrade.shtml>

The following terms are trademarks or registered trademarks of other companies, and have been used at least once in this information:

Microsoft, Windows, Windows NT, and the Windows logo are trademarks of Microsoft Corporation in the United States, other countries, or both.

Java and all Java-based trademarks and logos are trademarks of Sun Microsystems, Inc. in the United States, other countries, or both.

Linux is a registered trademark of Linus Torvalds in the United States, other countries, or both.

UNIX is a registered trademark of The Open Group in the United States and other countries

Other company, product, or service names may be trademarks or service marks of others.



GC19-2516-00

