



ADD-ON FOR HP OPENVIEW PRODUCTS

DB2SPI

FOR MONITORING DB2 DATABASES
WITH HP OPENVIEW OPERATIONS
VERSION A.01.20



HP OPENVIEW

Gain complete control

The NiCE Smart Plug-in for DB2 (DB2SPI) helps DBAs efficiently monitor DB2 UDB environments on Unix, Windows or Linux from a central, best-in-class console.

The DB2SPI increases RDBMS availability and performance, lets administrators visualize shortages and trends and consequently lower the overall cost of maintaining the DB2 environment.

To maximize your return on investment NiCE offers a complete portfolio of support and services. These flexible, effective Customer Care options assure the utmost in responsiveness for your support needs. Beyond securing your investment, NiCE support helps you maintain its value, 24x7, globally.

Features

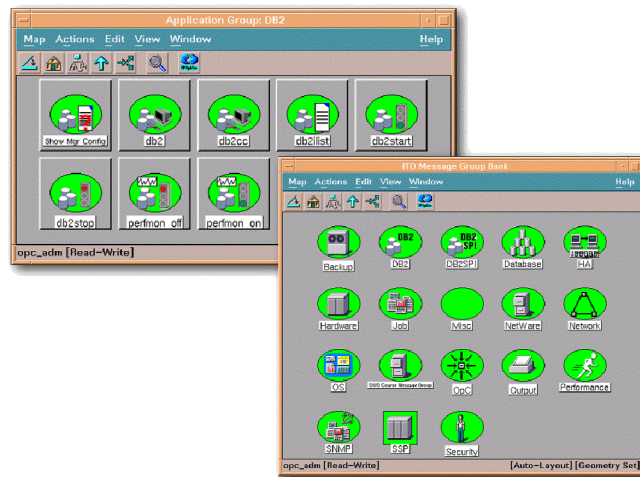
The DB2SPI helps DB administrators to:

- Proactively reduce DB2 down time - more than 50 predefined event conditions proactively identify problems before they affect end-users.
- Get answers, not just data - informs which tasks to perform to optimize the environment.
- Facilitate fast recoveries - reduces mean time to recovery (MTTR) by intuitive instructional text
- Diagnose, plan and track service levels with flexibility – integrates to provide a variety of graphical formats displayed.
- Flatten the learning curve - assume routine database monitoring activities without learning a new management paradigm.
- Delegate without losing control - precisely configure database operator's environment.
- Monitor without intrusion - adopts a nonintrusive approach to monitoring and does not create objects or interfere with the databases being managed.

Event/Action – hp OpenView operations

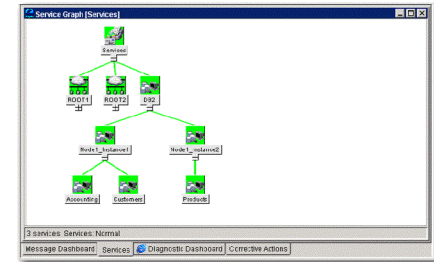
HP OpenView Operations with the DB2SPI monitors key operational activities and events to ensure always on availability.

- Lock information such as lock escalations and lock wait time
- Deadlock information including internal deadlock rollbacks and deadlocks detected
- Monitoring buffer pool activity such as the number of data and index logical reads
- Monitoring local and remote connections
- Monitoring applications and agents including agents currently registered by Database Manager
- Monitor Processes and Logfiles of up to nine DB2 instances per Server
- Filtering capability keeps out unwanted databases
- Tools and utilities provide fast and direct access to instances and databases



Service visualization – hp OpenView Service Navigator

DB2 databases are discovered and visualized automatically. Events affecting the status of a database are automatically reflected in the service tree.



Performance – hp OpenView performance

HP OpenView performance with the NiCE DB2SPI monitors critical DB2 resources, including 70 predefined performance metrics to analyze and measure DB2 performance:

- Database status: active, quiescence-pending, quiescence or roll forward in progress
- Sort, buffer pool and I/O performance such as average elapsed time per sort and buffer pool hit ratio
- Agent and application performance including agents waiting and percentage of open blocking cursors for an application
- Log space management including maximum total log space and number of secondary transaction logs remaining to be allocated
- Monitoring lock performance such as percentage of lock list memory in use and average lock wait time.

Service Reports – hp OpenView reports

Access predefined service reports: HP OpenView Reporter provides 10 predefined reports in the areas of availability, space management, workload and operations.

System requirements

Supported DB2 Releases

- DB2 7.1, 7.2, 8.1

Management Server

- HP OpenView VantagePoint Operations 6.x
- HP OpenView Operations for Unix 7.x,
- HP-UX, Sun Solaris
- HP OpenView Performance Manager

DB2 managed nodes

- HP OpenView VantagePoint Operations Agent
- HP OpenView Operations Agent
- HP OpenView Performance Agent
Supported on
AIX 4.3, 5L; HP-UX 10.20, 11.0, 11.11;
Solaris 7, 8; Linux

Ordering information

- G3406
NiCE SPI for DB2 with hp OpenView,
Tier 4 License
- G3405
NiCE SPI for DB2 with hp OpenView,
Enterprise Server License, Tier 3 License
- G3404
NiCE SPI for DB2 with hp OpenView,
Datacenter Server License, Tier 2 License
- G3403
NiCE SPI for DB2 with hp OpenView,
Advanced Server License, Tier 1 License
- G3402
NiCE SPI for DB2 with hp OpenView,
Server License, Tier 0 License

The technical data in this document are correct at the time of going to print.

premier business partner



hp OpenView
authorized

silver ★★



Liebigstraße 9
D-71229 Leonberg
Phone: +49 7152 -9 39 82-0
Fax: +49 7152 -9 39 82-82
www.nice.de
eMail: products@nice.de

© December 2002