



Software Group

## IBM Gold Consultant Briefing

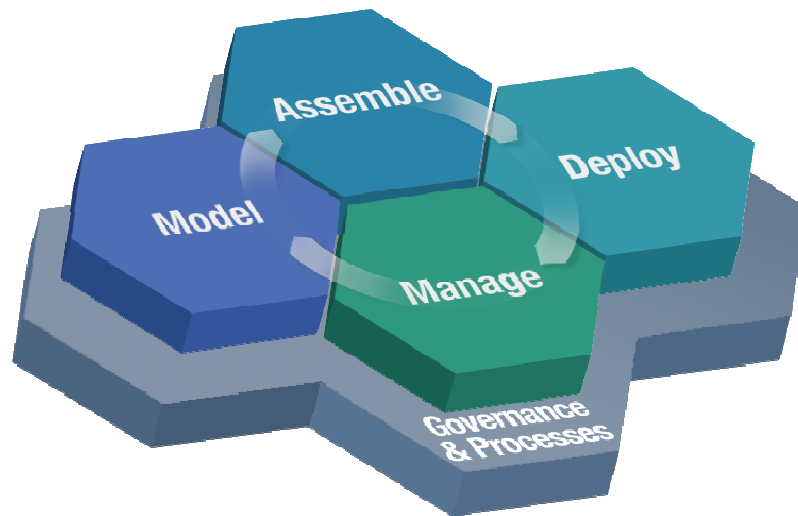
Introducing DB2 Data Warehouse Edition 9.1.1

December 15, 2006

Pat Bates ([jpbates@us.ibm.com](mailto:jpbates@us.ibm.com))  
Product Manager DWE Analytics

# Agenda – What's New in DB2 DWE 9.1.1

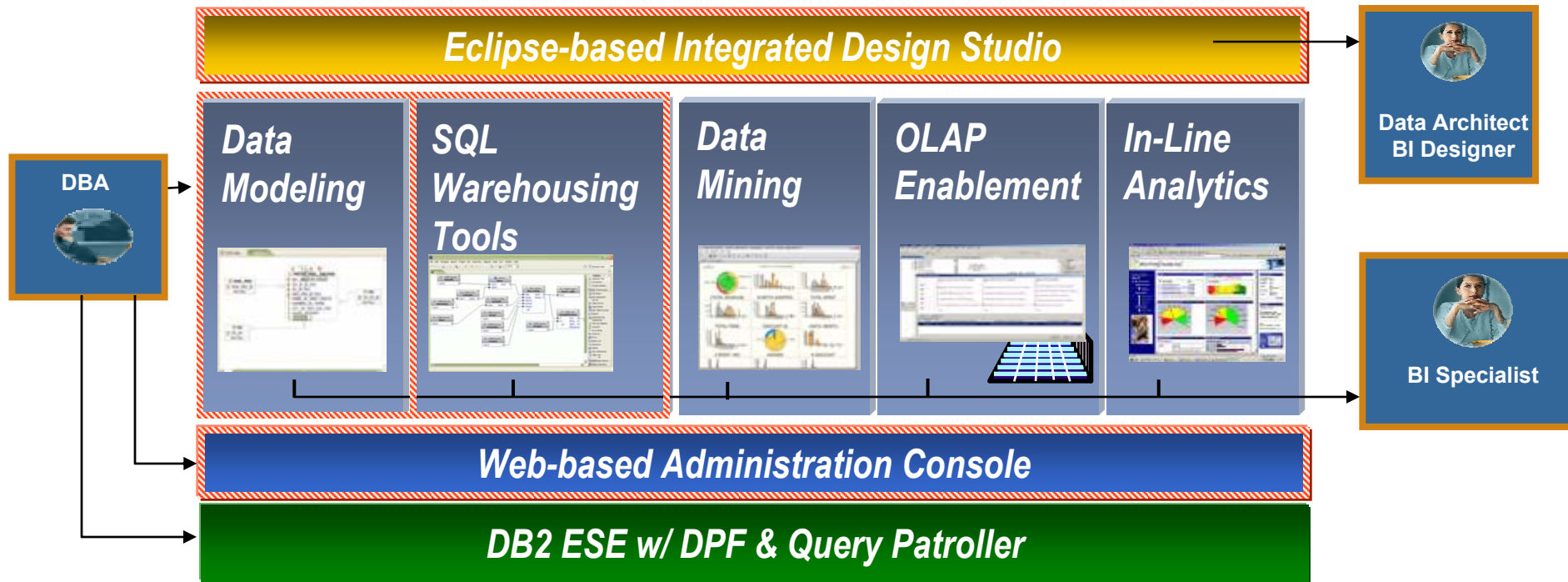
## ***DB2 DWE*** ***The Integrated*** ***Warehouse Platform***



- New Features Summary
- New in DB2 Viper (DB2 9.1)
- New in DB2 DWE 9.1.1

# The Integrated Data Warehouse

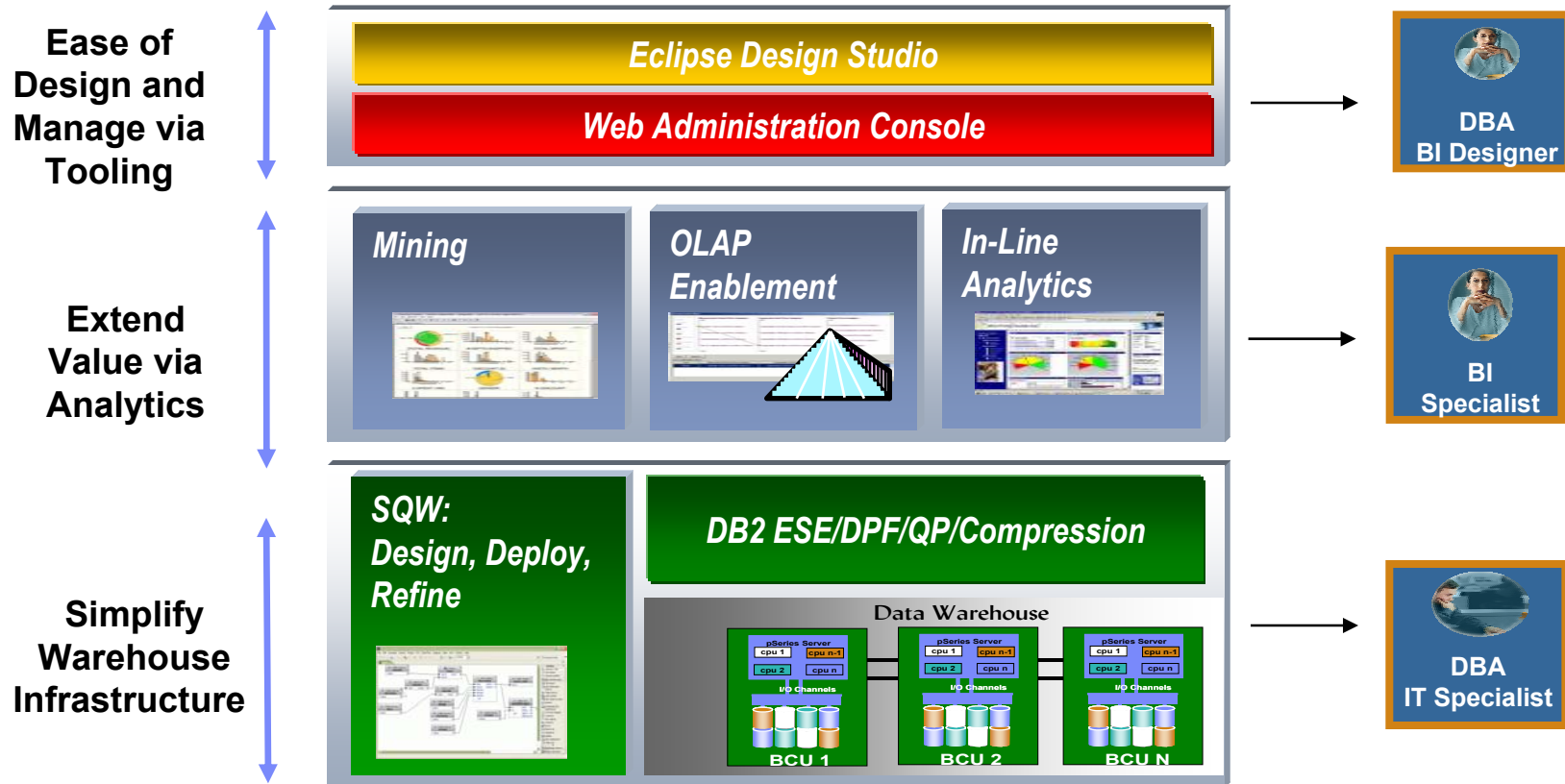
## DB2 Data Warehouse Edition v 9.1



 New or dramatically enhanced capability.

# The Integrated Warehousing Platform

## DB2 Data Warehouse Edition 9.1.1



- An integrated platform for DB2 warehouse & warehouse-based analytics
- All the infrastructure and tools to build the warehouse and its analytic structures for Mining and OLAP, and to develop embedded analytics in portal

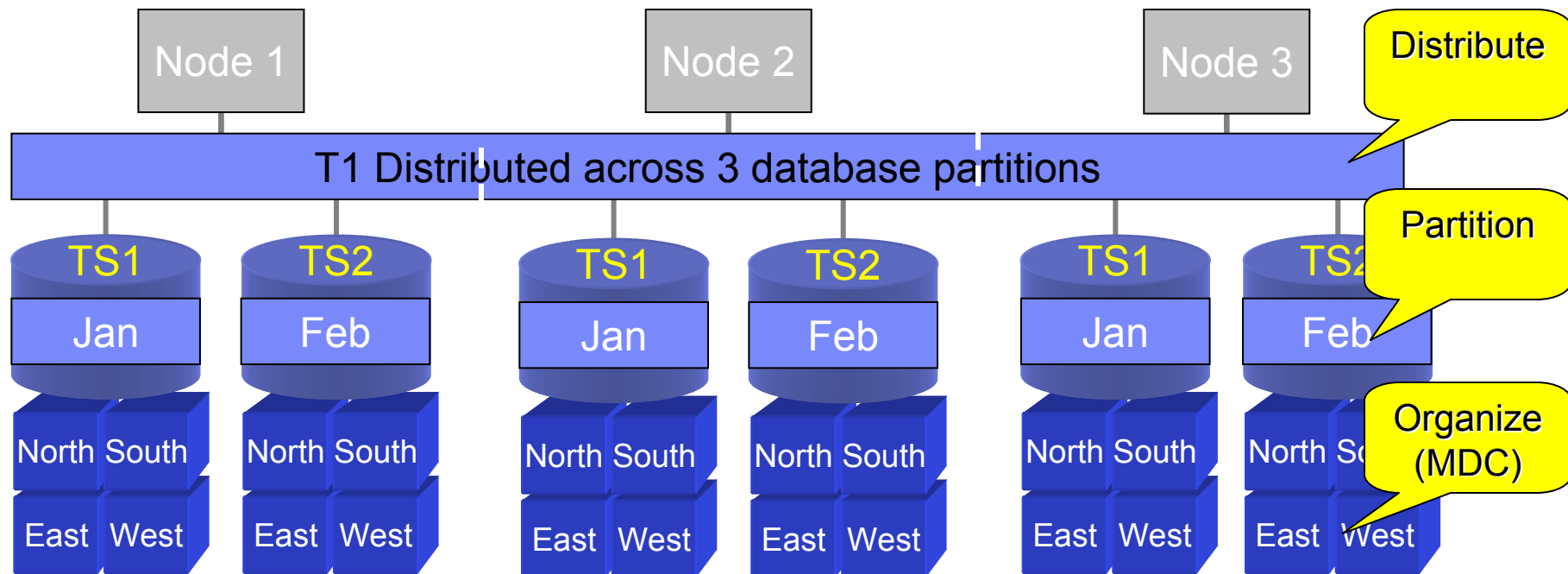
# DB2 Data Warehouse Edition 9.1.1

- **New Release**
  - Announced: 10/17/2006
  - General Availability: 12/1/2006
  - Test Drive available now on Windows
- **Includes DB2 9.1**
  - Table Partitioning
  - Storage Optimization Feature
  - Still supports DB2 8.2
- **Intelligent Miner Blox**
- **Solaris 9**
- **Firefox browser support on Windows**
- **DB2 DWE Developer Addition**
- **Fix Pack Items**
  - Usability Enhancements

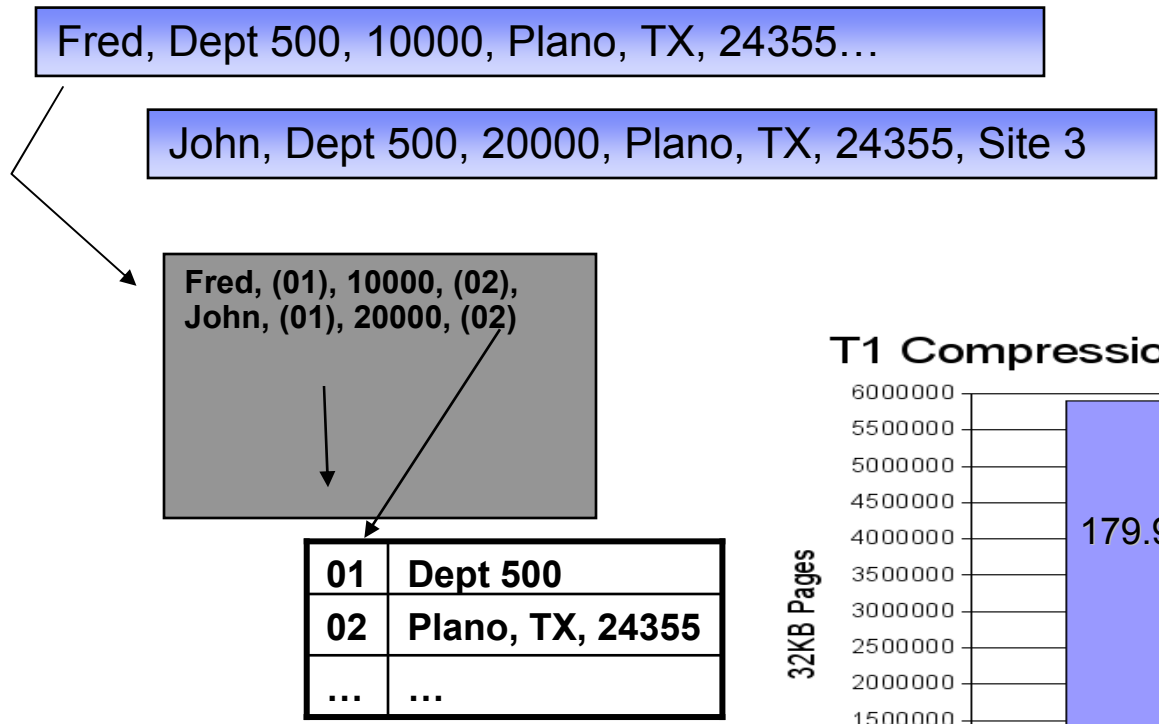
# DB2 9.1 Enhancement for Warehousing

## Spread the Data for Performance in DB2

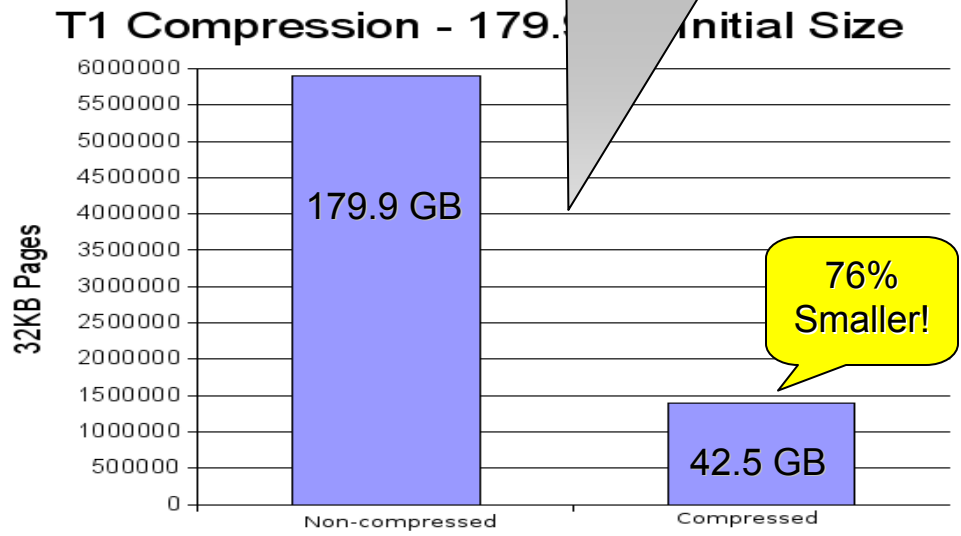
- **3 ways to spread data, and you can mix and match!**
  - DISTRIBUTE BY HASH - for scale-out
  - PARTITION BY RANGE – for concurrency and roll-in/roll-out of data
  - ORGANIZE BY DIMENSIONS – for fast access and efficient I/O



# Row Compression in DB2 9.1



What would happen to your costs if you needed less than 1/2 your storage!



Dictionary contains repeated information from the rows.



# Compression Ratio – Major Financial Services Co Data

Table	Non-compressed (pages)	Compressed (pages)	% Pages Saved
ASSET_MAPPING	162	58	63%
POSITION	1000	300	60%
POSITION_EFFECT	8920	3916	55%
RECEIVABLE_ASSET	1088	484	56%
TRADE_LEG	10624	3412	68%
TRADE_LEG_ADDENDUM_ET2	992	332	67%
TRADE_STRUCTURE_ITEM	5280	1504	72%

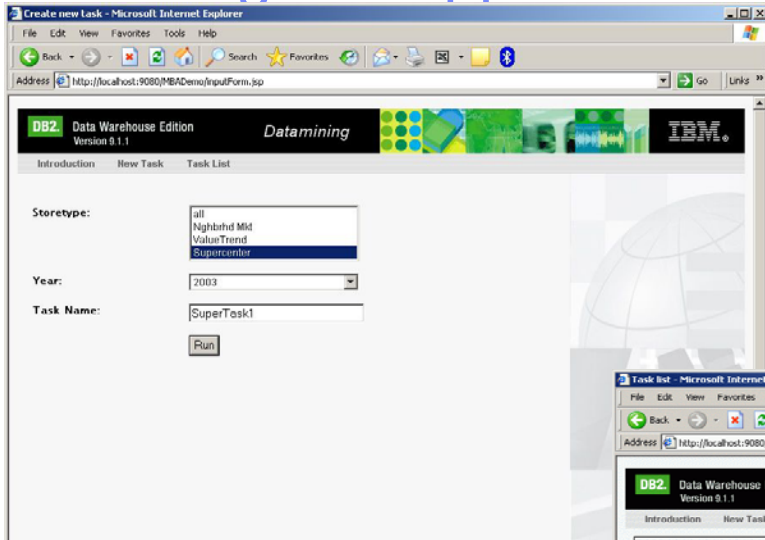
Average Saving of 63%

# DB2 DWE 9.1.1 Enhancements

## Intelligent Miner Blox

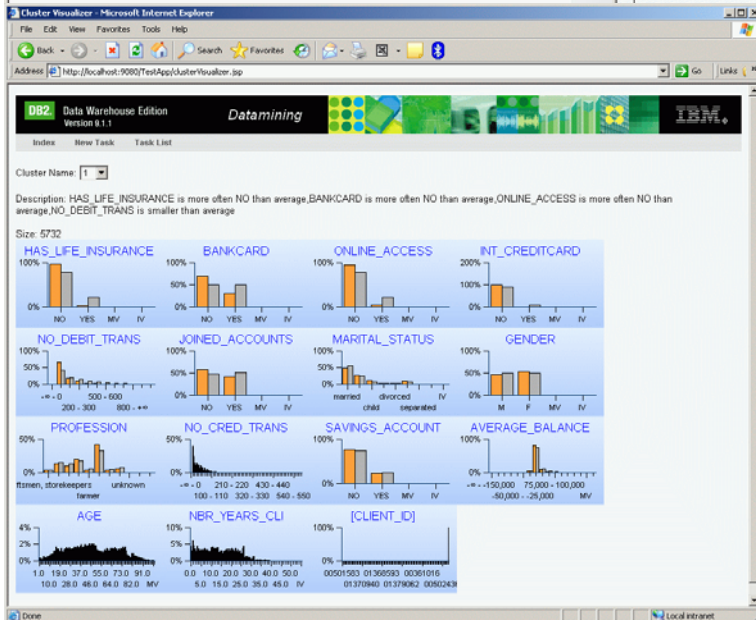
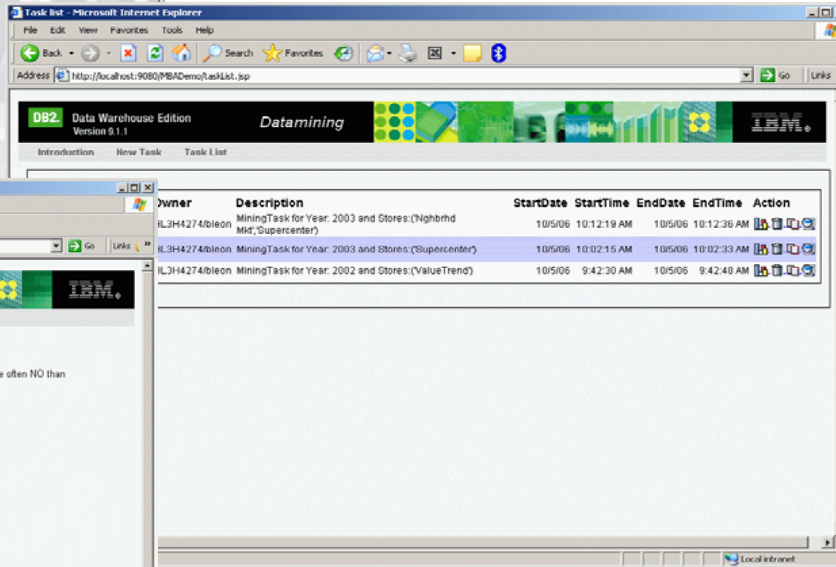
- **New Mining blox and custom tag library for viewing mining results in Alphablox**
  - Generate template Miningblox application for Data Warehouse applications with Design Studio wizard.
  - Simplify Web deployment of IM Visualization applets (rich graphical mining results like associations visualizer) (rendered as applets)
  - Leverage Alphablox UI chart components for simpler charts and build mining blox reusing the Alphablox infrastructure (DHTML rendering)
  - Leverage Alphablox Grid and Report components for tabular mining results
    - Association and sequence rules
    - Deviations
    - Clusters/segments
    - Numeric predictions (Regression)

# A Miningbox application consists of



➤ Task Submission & Execution

➤ Task Management



➤ Results Visualization

## DB2 DWE Developer Edition

- **Reduces the cost for supporting the development system**
- **License for DWE for development environment only**
- **Priced by named user**
- **Contains all components of the Enterprise Edition**

## DB2 DWE 9.1.1 Enhancements / Highlights

- **Install Enhancements**
  - DWE upgrade install
  - New hotfix utility
  - Improved configuration tool
  - New DPF install features
- **Admin Console Enhancements**
  - Improved application deployment
  - Improved log / trace
- **Design Studio**
  - RDA 3.2 upgrade

## DB2 DWE 9.1.1 Enhancements / Highlights (continued)

### ■ **SQL Warehousing Tool**

- Stored procedure operator
- Variable Compare operator
- Flat file format discovery
- Generate Period Table operator
- Enhanced JDBC support for non-DB2 sources/targets
- DPF support in data flow operators
- DB2 RUNSTATS and REORG control flow operators
- Improved incremental COMMIT
- Improved log / trace framework
- Improved variable support
- Range partitioning support

## DB2 DWE 9.1.1 Enhancements / Highlights (continued)

- **Additional Enhancements to Data Mining**
  - New Naïve Bayes classification
  - Cost handling in rules mode
  - Rules in Post Filter
  - Logistic regression



# DB2 Data Warehouse 9 (v9.1.1 Components)

## DB2 Data Warehouse 9 (v9.1.1) Product Offerings

### Base Edition

#### Standard Features:

- DB2 Enterprise 9
- DW Cube Views
- DW Design Studio (modeling & CV only)
- DW Integrated Installer

#### Add-on Features:

- DB2 Data Partitioning Feature  
(Additional \$8K per processor)
- DB2 Storage Optimization Feature  
(Additional \$11K per processor)
- DB2 Performance Optimization Feature  
(Additional \$11K per processor)
  - Includes:
    - DB2 Query Patroller
    - Performance Expert

### Enterprise Edition

#### Standard Features:

- DB2 Enterprise 9
- DW Cube Views
- DW Design Studio (complete edition)
- DW Integrated Installer
  
- Data Partitioning Feature
- DB2 Query Patroller
- DW SQL Warehousing Tool
- DW Admin Console
- DW Intelligent Miner
- Alphablox
- DB2 Storage Optimization Feature

# IBM BCU for AIX v2.1 Solution Offering Components



## ▪ SOFTWARE

- AIX 5L
- DB2 Data Warehouse 9 (v9.1.1)  
( Enterprise Edition or Base Edition\*)
- Tivoli System Automation

## ▪ SERVER

- IBM System p5 575

## ▪ STORAGE

- IBM System Storage DS4800

## ▪ SERVICES

- DB2 Lab Services
- GTS Information Warehouse

## ▪ SUPPORT

- IBM Solution Support

### Note:

Key changes for the refresh are as follows:

- 1.) p5-575 → upgrading to POWER5+ processors
- 2.) DS4500 → DS4800, DS8100
- 3.) New DB2 Data Warehouse 9 (v9.1.1)

**\*NOTE:** DB2 Data Warehouse Edition - Base v9.1.1 requires the additional purchase of *DB2 Data Partitioning Feature* and the additional purchase of *DB2 Performance Optimization Feature* is strongly recommended

# IBM BCU for AIX v2.1 Reference Configurations

	 <b>BCU for AIX v2.1 2TB</b>	 <b>BCU for AIX v2.1 6TB</b>	 <b>BCU for AIX v2.1 12TB</b>
<b>Software</b> Enterprise Edition (v9.1.1)	<b>DB2 Data Warehouse 9</b> 10 licenses	<b>DB2 Data Warehouse 9</b> 26 licenses	<b>DB2 Data Warehouse 9</b> 50 licenses
<b>Server</b> with POWER5+	<b>Series p5 575</b> 1 Data BCU (8way 2.2GHz) 1 Admin BCU (2way 1.9GHz)	<b>Series p5 575</b> 3 Data BCU (8way 2.2GHz) 1 Admin BCU (2way 1.9GHz)	<b>Series p5 575</b> 6 Data BCU (8way 2.2GHz) 1 Admin BCU (2way 1.9GHz)
<b>Storage</b>	<b>System Storage DS4800</b> 2TB Configuration Model 82	<b>System Storage DS4800</b> 6TB Configuration Model 82	<b>System Storage DS4800</b> 12TB Configuration Model 82

# Supported Languages

- **English (International)**
- **French**
- **Korean**
- **Chinese (Traditional and Simplified)**
- **Spanish**
- **Portuguese (Brazilian)**
- **German**
- **Japanese**
- **Italian**

## DWE 9.1.1 Supported Platforms

- **Data Warehouse Server and Application Server**
  - AIX 5L (5.2, 5.3) on Power
    - 64-bit recommended
    - 32-bit only supported with DB2 8.2
  - RHEL V3 on Pentium Compatible 32-bit
    - Only supported for DB2 8.2
  - RHEL V4, SLES 9
    - Pentium Compatible 32-bit
    - X86-64 (AMD64, EM64T) 64-bit
  - Solaris 9 on UltraSparc 64-bit
  - Windows 2003 on Pentium compatible 32-bit
- **Client Computer**
  - Windows 2000 and XP on Pentium compatible 32-bit

# Q & A



Thank You!

[jpbates@us.ibm.com](mailto:jpbates@us.ibm.com)

*TAKE BACK* **CONTROL**

