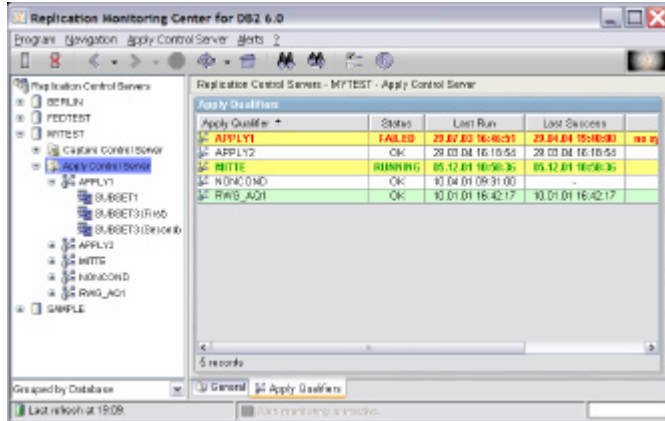


What is Replication Monitoring Center for DB2?

The Replication Monitoring Center for DB2 (RMC) provides monitoring and operational support for DB2 DataPropagator. It is a software tool created by IBM Global Services with the experience of DB2 replication implementation projects for DB2 customers who want data replication supervision.



RMC – The Replication Explorer

What can the Replication Monitoring Center for DB2 help you do?

Replication Monitoring Center for DB2 helps you to monitor the DB2 data replication across your enterprise. Use RMC to

- Review your replication configuration
- Get an overview of the operational status
- Visualize the operational data for a better understanding
- Perform basic operational tasks in an easy way
- Get immediately informed about problems using the alert monitoring feature.

Replication Monitoring Center for DB2 monitors DB2 DataPropagator on various platforms: DB2 replication installations on z/OS®, iSeries®, DB2 supported UNIX platforms and Microsoft® Windows® platforms.

The tool uses JDBC to establish connections to replication control databases.

Replication Monitoring Center for DB2 enables you to monitor DB2 DataPropagator versions 5, 6, 7 and 8, also in parallel. Heterogeneous data replication using DB2 Information Integrator and DB2 DataJoiner is also supported.

Replication Monitoring Center for DB2 features

Replication Monitoring Center for DB2 offers numerous features for a comprehensive replication tracing:

- Fast access to replication information located in DB2 replication databases.
- Efficient automated refresh mechanism ("refresh on demand") to keep displayed information up to date.
- Platform independent because it is a Java application.
- Support for a wide range of DB2 DataPropagator platforms.
- Support for DB2 DataPropagator versions 5, 6, 7 and 8, also in parallel.
- Multiple levels of summarized information to provide an optimum of information granularity.
- Configurable alert management to get quickly informed about different replication problems.
- Integration of the new DB2 DataPropagator Replication Alert Monitoring feature into alert notifications.
- Extended replication alert notification by e-mail and configurable user exit routines.
- Different run modes with graphical user or command line interface support attended and unattended replication monitoring.

Download, Evaluation and Licensing

The Replication Monitoring Center for DB2 homepage provides

- The most recent software release available with installation packages for Windows, Linux and AIX
- A 90 day full functional evaluation version
- The possibility to purchase a software license online
- More information about the tool.

Visit us at

<http://www.alphaworks.ibm.com/tech/db2rmc>

For more information

Have a look at the web site, or contact

Thomas Eppner
IT Specialist
IBM Business Consulting Services
eppner@de.ibm.com

Replication Monitoring Center for DB2

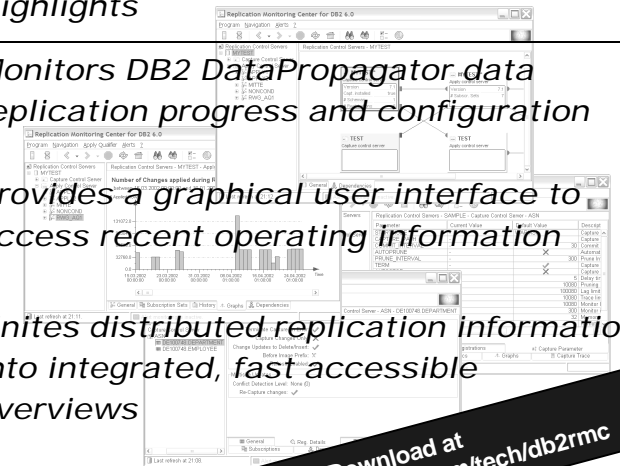
Enhance the effectiveness of your replication control

Highlights

Monitors DB2 DataPropagator data replication progress and configuration

Provides a graphical user interface to access recent operating information

Unites distributed replication information into integrated, fast accessible overviews



Download at
www.alphaworks.ibm.com/tech/db2rmc

Retrieve recent replication state and configuration information.

Learn how the Capture and Apply programs are working in your current configuration. Retrieve data about the current operational status and get answers to questions like:

- Is Capture behind in the logs?
- Is Apply processing failing?
- Is Apply replication overdue?
- When is the next replication planned?

You can also use the tool to learn about the replication configuration. It shows:

- How the replication components Capture, Apply and the Replication Alert Monitor are configured and running
- How tables and views are registered for replication
- How subscription sets are defined
- What alert conditions are monitored

See important operating information at a glance.

Replication Monitoring Center for DB2 provides replication information at different abstraction levels. These levels include:

- *Replication Control Servers* – high level overview of all monitored replication servers
- *Capture Control Server, Capture Schema and Registration* – overview and detailed information of Capture processing and registrations
- *Apply Control Server, Apply Qualifier and Subscription Set* – overview and detailed information of Apply processing and subscription set information
- *Monitor Control Server, Monitor Qualifier and Monitored Server* – overview and detailed information of Replication Alert Monitor, monitored alert conditions, currently reported alerts and history



The higher the abstraction level the more the information is consolidated to give an optimal overview of the current situation.

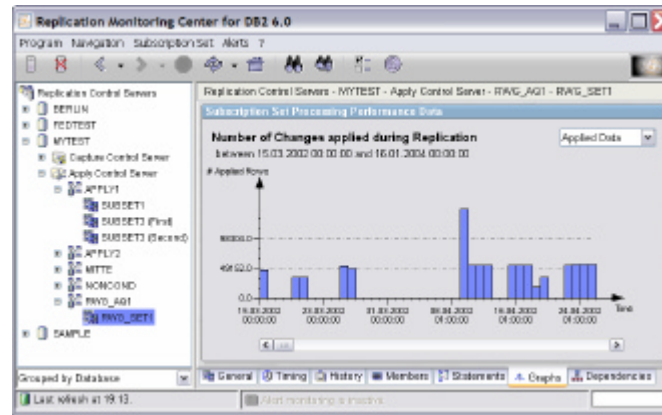
Visualize configuration and performance data.

Browse your replication configuration and operational data using more than 40 different panels.

These panels provide structured information about

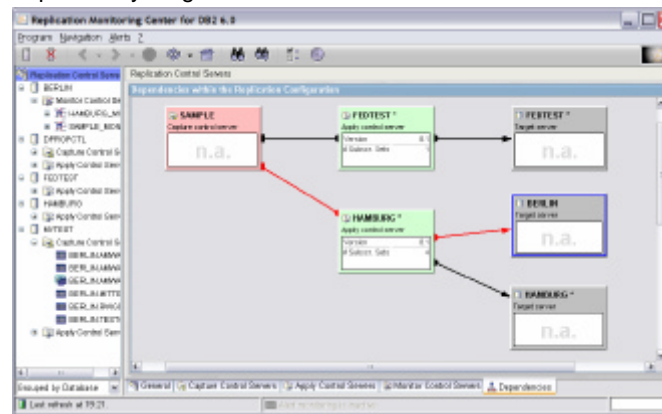
- Replicated tables and views
- Replication progress and history
- Dependencies within the configuration
- Component parameter and trace data.

The following picture shows a performance graph that displays the number of changes replicated for a subscription set in a certain amount of time:



Graph with performance data¹

Dependencies within the configuration can be visualized in dependency diagrams:

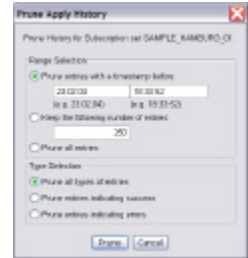


Dependencies between replication objects¹

This representation of data enables the user to quickly understand replication processing and to recognize possible problem causes.

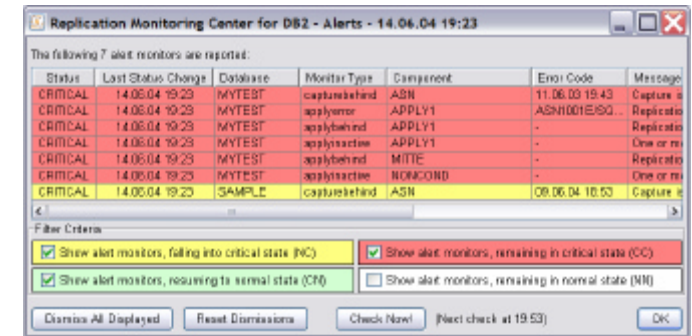
Perform basic operational tasks in an easy way.

Use Replication Monitoring Center for DB2 to perform operational tasks on registrations and subscriptions. Trigger full refresh, change replication activation, add or remove replication events, change operational parameters for Capture, Apply and the Replication Alert Monitor and prune component traces and histories.



Receive alert messages when replication problems occur.

The customizable alert management feature allows you to immediately be informed when replication is running into a problem. You can be notified by e-mail, and you can configure user exit routines and the applications alert window. The new DB2 DataPropagator version 8 Replication Alert Monitor data have been integrated into the notification.



Alert Notification Window

The problem notification is highly customizable. Notifications can be sent when a problem occurs, remains or disappears. The content of a notification itself is adaptable according to your needs. So, e.g., if you are using the e-mail option the message format can be optimized for pager, mobile or a standard inbox (as HTML document or plain text). The application can also be started in an unattended mode to be used as a pure alert monitoring gateway.

IBM © International Business Machines Corporation 2004
All Rights Reserved

AIX, AS/400, DataJoiner, DataPropagator, DB2, IBM, Information Integrator, iSeries, z/OS are trademarks of International Business Corporation.

Java and all Java-based trademarks are trademarks of Sun Microsystems, Inc.

Microsoft and Windows are trademarks of Microsoft Corporation.

UNIX is a registered trademark and is licensed exclusively through X/Open Company Limited.

Other company, product or service names may be trademarks or service marks of others.