

## IBM DB2 Table Editor, Version 4.3

---

### Highlights

---

- ***Easily navigate IBM DB2® databases, tables and views; find related data and quickly update, delete or create data with full support for your existing database security and logon IDs***
- ***Edit DB2 tables everywhere with your choice of end-user entry points: Java™-enabled Web browsers; Java-based interfaces launched from IBM DB2 Control Center; Microsoft® Windows®; or an ISPF interface***
- ***Drag-and-drop or use wizards to rapidly create versatile, task-specific Java- or Windows-based table editing forms containing built-in data validation and business rules***

### **Seize control of data integrity**

Whether your concern is as basic as accurate customer records or as complex as running applications that depend on hundreds of interdependent tables, preserving data integrity is probably your organization's number one maintenance job. Now, all of your knowledge workers can make it their job by using a single, powerful tool with multiple interfaces that support novice and expert users with ease, even while maintaining tight control over data editing privileges.

Anyone who can use a browser can access IBM DB2 Table Editor, Version 4.3 from anywhere and update, create or delete data across DB2 database platforms, with security, referential integrity and support for the advanced capabilities of DB2.

### **Locate, select and update with ease**

Navigating and editing database tables has never been easier, whether your end users prefer a traditional table editing environment or convenient, tightly controlled table editing forms that help eliminate human error.

Administrators may want to browse database tables and views (even with no prior understanding of the database structure), or search-and-replace, filter data, and open tables related to selected data. End users at the front lines of your business, such as customer service personnel, will want forms containing business rules and command buttons that make it easy to call up data and quickly perform specific, important tasks with virtually no training. DB2 Table Editor offers all your end users an environment that meets their needs.

And everyone in the enterprise will rely upon the referential integrity built into the Java- and Windows-based interfaces of DB2 Table Editor to assure that all dependent database objects are properly updated every time.

### **Robust table editing features for top productivity**

DB2 Table Editor can be used as a Java-based application that provides robust table editing operations, including the ability to:

- *Edit tables on multiple DB2 database platforms*
- *Maintain referential integrity while performing inserts, updates and deletes*
- *Update primary keys*

## Enhance productivity by making databases accessible from anywhere



DB2 Table Editor provides well-controlled data access and editing for end users everywhere through both Java- or Windows-based interfaces.

- Quickly search for and locate specific rows, filter rows displayed, sort by and omit columns, or immediately jump to tables of related data
  - Commit accumulated data changes at the end of a session, and use find-and-replace for large-scale changes
  - Edit with the standard DB2 Table Editor interface, or create prototype forms in seconds with the form-building wizard
  - Easily locate and launch previously saved Java-based forms, including from links in Web pages or e-mail messages
  - Launch the standard DB2 Table Editor interface from DB2 Control Center or DB2 Web Query Tool
  - Access large objects in DB2 databases.
- Build sets of forms and link them with parent/child relationships
  - Embed forms into Web pages as tightly controlled data access/entry applications
  - Store forms on DB2 databases, restrict access by end users and perform other centralized administrative tasks for enhanced control.

The DB2 Table Editor Windows-based interface provides the above capabilities, plus administrative and forms-building modules that let you:

- Drag-and-drop to build any number of table editing forms designed for specific tasks and/or restricted to specific data
- Save the forms for Java or Windows deployment
- Embed business rules, data validation and command buttons into forms, including command buttons that launch any SQL

In addition, a DB2 Table Editor ISPF interface is available for DB2 Table Editor for z/OS™ customers. It provides its own distinct set of features, including commands to select column order, show/hide a column, freeze column in display, include all/exclude all commands, convert entered data to uppercase, zoom in, edit in place and more. The DB2 Table Editor ISPF interface may also be launched from within the DB2 Administration Tool launchpad and through line commands in DB2 Administration Tool and DB2 Test Database Generator.

### Cross platform support

DB2 Table Editor for z/OS supports DB2 Version 7 and later. DB2 Table Editor for Multiplatforms supports DB2 Version 7.2 and later on Linux, Unix and Windows. In addition, DB2 Table Editor for Multiplatforms also supports the Informix Dynamic Server (IDS) Version, 9.x and later.

Key requirements for use of the Java GUI include:

- *Web server capable of running an IBM JDBC™ applet server*
- *JDBC driver configured to establish a connection to the DB2 databases to be accessed*
- *Any Web browser supporting JVM 1.1, such as current versions of Netscape Navigator and Microsoft Internet Explorer.*

Key requirements for use of the Windows GUI include:

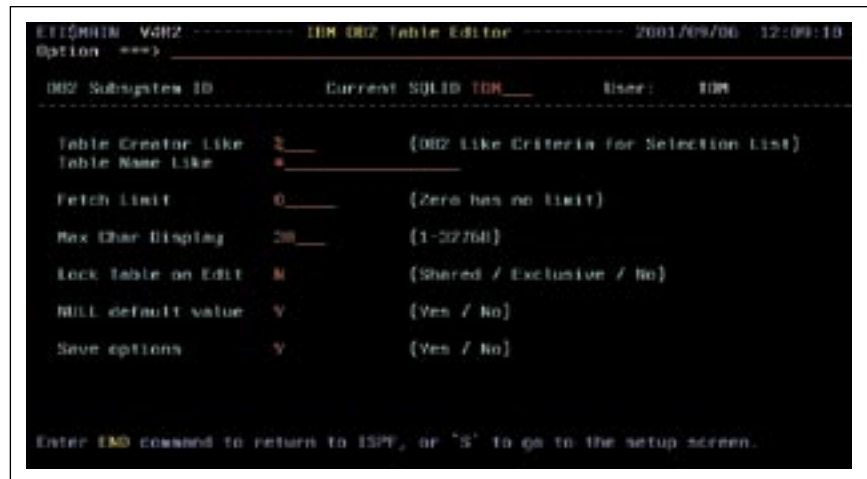
- *Windows 95, Windows 98, Windows NT® or Windows 2000.*

### **Unlock your data with secure, global table editing**

DB2 Table Editor is an affordable tool enabling you to preserve data integrity while providing robust table editing features across a wide variety of platforms and end-user clients. Novices and experts alike can use the tool to increase their productivity.

#### **When ordering:**

- *IBM DB2 Table Editor for z/OS, Version 4.3, please refer to program number: 5697-G65*
- *IBM DB2 Table Editor for Multiplatforms, Version 4.3, please refer to program number: D50R7LL.*



IBM DB2 Table Editor for z/OS allows you to easily access, edit and search database tables. You can also perform inserts, updates and deletes without writing SQL.

#### **For more information**

Please contact your IBM marketing representative or IBM Business Partner, or call 1 800 IBM-CALL within the U.S.

Also visit our Web site at

[ibm.com/software/data/db2imstools](http://ibm.com/software/data/db2imstools)



© Copyright IBM Corporation 2005

IBM Corporation  
Silicon Valley Laboratory  
555 Bailey Avenue  
San Jose, CA 95141  
U.S.A.

Produced in the United States of America  
12-05  
All Rights Reserved

AIX, DB2, DB2 Universal Database, IBM, the IBM logo, Informix, the On Demand Business logo and z/OS are trademarks of International Business Machines Corporation in the United States, other countries or both.

Linux is a registered trademark of Linus Torvalds.

Microsoft, Windows and Windows NT are registered trademarks of Microsoft Corporation in the United States, other countries or both.

Java, all Java-based trademarks and Solaris are trademarks of Sun Microsystems in the United States, other countries or both.

All other products or product names are trademarks or registered trademarks of their respective owners.

References in this publication to IBM products or services do not imply that IBM intends to make them available in all countries in which IBM operates.