

## IBM DB2 Universal Database Express Edition, Version 8.2

---

### Highlights

---

- **High value, low cost production ready database**
- **Developer-friendly and does not require a dedicated DBA**
- **Fast path to reliable data management**
- **Unsurpassed support and service through DB2 UDB Express Edition**
- **Comprehensive forum-based support through DB2 Express-C**

### Production ready, maintenance-free database

For independent software vendors (ISVs) who want to grow revenue and reduce development costs, IBM DB2® Universal Database™ Express Edition, Version 8.2 (DB2 UDB Express) offers an information management solution ready for development and production at no cost. Combining power, functionality and reliability with simplicity in installation and deployment, DB2 UDB Express can transform captive data into openly available information on demand throughout your enterprise.

With DB2 UDB Express, small and medium businesses, academic communities, and the IBM Business Partners who serve them can take steps to deploy solutions based on a service oriented architecture (SOA), unlocking the value of information assets.

DB2 UDB Express has added even more self-managing, self-tuning, self-correcting and self-healing properties. These self-maintaining features optimize database performance and eliminate the need for a dedicated database administrator (DBA) by minimizing system maintenance requirements. For customers who want to lower their total cost of ownership, not having to hire a dedicated DBA is a key selling point.

### HADR option maximizes availability

Businesses today rely on their data, and each minute that data is inaccessible, thousands if not millions of dollars are being lost. Reliable databases are critical to ensure this valuable data is available at all times for consumers to access. DB2 Universal Database addresses this challenge head-on with the optional High Availability Disaster Recovery (HADR) feature. HADR creates and maintains a fault tolerant replica of your database, called a standby database, which protects your data from unplanned outages such as natural disasters or power failures as well as scheduled maintenance. With HADR you can be assured your data will be available for access 24x7.

### Ease of development

DB2 UDB Express supports a full range of APIs, including Microsoft .NET Framework and Java™ 2 Platform, Enterprise Edition (J2EE) technology.

The database includes a complete set of tools that integrate into the Visual Studio .NET development environment, simplifying the development of DB2 server-side logic such as stored procedures and structured query language (SQL) functions.

## **Manageability for mission-critical applications**

DB2 UDB Express also includes a newly architected set of Java drivers and includes tools for building multitier applications using J2EE application servers. These drivers eliminate the need to acquire additional technologies to develop applications written in the Java programming language, accelerating time to value and reducing time to market.

For PHP developers, DB2 UDB Express comes bundled with Zend Core for IBM, a seamless, out-of-the-box, easy-to-install PHP development and production environment. Zend Core delivers a rapid development and deployment foundation for database-driven applications.

In addition, DB2 UDB Express easily and transparently embeds into IBM Business Partner applications. The product's "silent install" capability allows IBM Business Partners to quickly and easily resell DB2 UDB Express as part of their targeted, market-ready solutions.

### **No charge data server for the community**

IBM DB2 Express-C is a version of DB2 UDB Express Edition designed for the community. It is a no-charge data server for use in development and deployment. It provides the same database server features, API support and system limits as DB2 Express in a smaller package.

Business partners may choose to register for free DB2 Express-C redistribution with their products and offerings.

Should you require a DB2 data server with more advanced features and 7x24 support from IBM, DB2 Express-C can be seamlessly upgraded to DB2 Express, Workgroup and Enterprise Server Edition(s) without modifying your database or your application.

A new forum, hosted and monitored by DB2 experts, is available to provide free community based support for DB2 Express-C. For more information refer to: [ibm.com/db2/express](http://ibm.com/db2/express)

### **Support for XML**

The IBM DB2 Express Viper release includes leading-edge technology for storing, managing and searching XML data in a secure, highly scalable environment. You will be able to seamlessly integrate XML with existing relational data, exploit both tabular and hierarchical data models, and enjoy the flexibility of using both SQL and XQuery in your application.

The new hybrid architecture of DB2 combines the best of relational database management technology with the best of native XML database management support. For more information refer to: [ibm.com/db2/xml](http://ibm.com/db2/xml)

### **Information on demand infrastructure**

How well an organization performs is directly related to how quickly it can act on windows of opportunity. Information on demand is about getting the right information to the

right people or processes at the right time to take advantage of these opportunities. Just as a house requires a solid foundation, so too does information on demand. The infrastructure that supports it must be flexible enough to meet varying demands. Given that information cost and IT complexity are directly related to this flexibility, DB2 UDB Express provides an entry point to enable information on demand for all organizations. IBM is strongly committed to working with partners and clients to make the information on demand vision a reality within small and medium enterprises in all industries.

As part of its commitment to DB2 UDB Express, IBM has enabled unprecedented integration between Version 8.2 and the Express versions of its WebSphere®, Lotus® and Tivoli® software families. This allows SMB customers to leverage a wide range of affordably priced IBM solutions to build resilient information on demand solutions. The complementary IBM Express offerings that support DB2 UDB Express include:

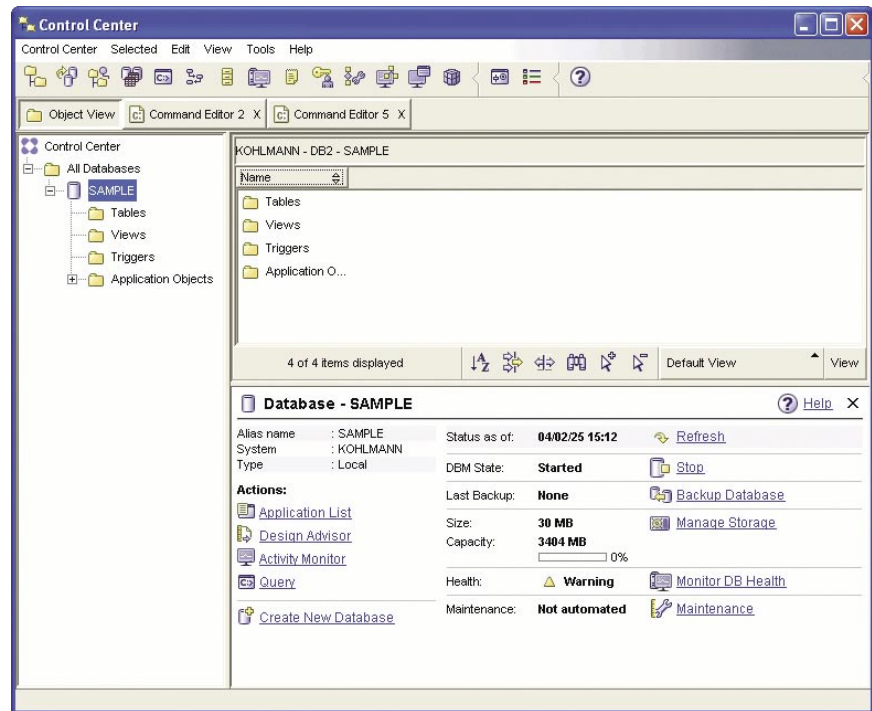
*IBM WebSphere Application Server - Express:* Empowers SMBs to rapidly create and deploy interactive Web content using integrated development tools, built-in wizards, templates and step-by-step developer guides. And with simple, easy-to-use administration capabilities, IT employees don't have to be highly skilled Java programmers to administer and support ongoing operations.

*IBM WebSphere Commerce - Express:* Helps companies quickly and easily get started in e-commerce by leveraging their existing Web or portal environments, including existing applications for inventory, sales and support.

*IBM Workplace Services Express:* Enables the entire organization to quickly collaborate and effectively work together. Designed specifically for small and medium-sized organizations or departmental needs in larger organizations, Workplace Services Express enables you to easily create, edit and share documents from your own customized Workplace environment.

*IBM Lotus Domino® Collaboration - Express:* Offers instant messaging and group calendaring functions to improve collaboration among employees.

*IBM Express Runtime:* Provides an integrated application run-time environment with reduced installation, configuration, licensing and support costs via one install, one license, one contract and a single point of contact for support. The offering contains run-time components of DB2 Universal Database, WebSphere Application Server and the full IBM HTTP Server. You can use it to deliver a total package—your application and an integrated set of IBM middleware—in one easily deployed solution.



*IBM DB2 UDB Express optimizes system performance by updating database statistics and reorganizing your data when necessary. It also helps to secure your data with automatic database backups.*

### Key prerequisites

#### Hardware requirements:

Processors: Intel 32-bit and IBM POWER™ (IBM @server® iSeries™ and pSeries®-based systems). Support for 64-bit processing using Intel Itanium, Intel EM64T, AMD64 and IBM POWER (IBM @server iSeries and pSeries- based systems).

#### Memory requirements:

Recommended minimum memory is 256 megabytes (MB) for Microsoft Windows and Linux platforms. Additional memory may be required to handle heavy workloads and large numbers of users.

#### Disk space requirements:

Recommended minimum disk space for a typical installation is 350MB for Windows and 450MB for Linux. The actual space required may vary depending on the specific file system and the components installed.

#### Software requirements:

DB2 UDB Express supports J2EE 1.4 and JDBC 3.0 with the new, freely distributable DB2 Universal Database universal driver (which includes significantly enhanced SQLJ support). Version 8.2 has the following requirements for operating systems:

## Windows

- *Windows Server 2003 Standard, Enterprise and Datacenter Editions*
- *Windows XP Professional Edition*
- *Windows 2000 Professional, Standard Server, Advanced Server and Datacenter Servers*

A complete list of the supported Windows operating systems can be found at: [ibm.com/software/data/db2/udb/sysreqs.html](http://ibm.com/software/data/db2/udb/sysreqs.html)

## Linux

Major Linux distributions are supported, including:

- *Red Hat Enterprise Linux 3, 4*
- *SUSE Linux Enterprise Server 8, 9*

A complete list of the validated Linux distributions can be found at: [ibm.com/db2/udb/sysreqs.html](http://ibm.com/db2/udb/sysreqs.html)

## Why IBM?

With easy terms and conditions, DB2 UDB Express is priced to enhance your competitiveness and profit margins in both initial license sales and ongoing support. IBM will continue to provide IBM Business Partners with industry-leading technical enablement, marketing and pre-sales support worldwide, including visibility to IBM sales and service representatives. Support for you as a Business Partner includes:

- *The opportunity to use the “Built on IBM Express Portfolio™” emblem when you market your solution or service for mid-market customers if it includes IBM Express offerings such as DB2 UDB Express. Use the emblem on your Web site, marketing campaign collateral, and in advertising to leverage IBM’s US\$200 million investment in Express Portfolio demand generation.*

- *Raise the visibility of your solutions and services for mid-market clients by nominating them to be presented on the award-winning IBM Express Portfolio Web site. An extensive IBM demand generation campaign is driving traffic to this site. Make it work for you.*

For more information on the Built on IBM Express Portfolio initiative or to nominate your offering, visit:

[ibm.com/partnerworld/pwhome.nsf/weblook/pub\\_strategies\\_smb\\_express\\_built.html](http://ibm.com/partnerworld/pwhome.nsf/weblook/pub_strategies_smb_express_built.html)

All IBM Business Partners may take advantage of IBM’s comprehensive enablement and support resources for building skills, applications and solutions. Leverage these resources by registering with the Virtual Innovation Center (VIC), an online knowledge portal providing access to the complete IBM enablement portfolio. Examples of the resources available on the VIC include:

- *Online sales and technical education with e-mentoring*
- *Porting and migration assistance*
- *Live multilingual 24x7 technical support*
- *Discussion forums*

## For more information

Please contact your IBM representative or IBM Business Partner, or visit our Web site at: [ibm.com/db2/express](http://ibm.com/db2/express)



© Copyright IBM Corporation 2006

IBM Corporation  
Silicon Valley Laboratory  
555 Bailey Avenue  
San Jose, CA 95141

Produced in the United States of America  
01-06  
All Rights Reserved

DB2, DB2 Universal Database, Domino, e-business on demand, @server, Everyplace, Express Portfolio, IBM, the IBM logo, iSeries, Lotus, the On Demand Business logo, pSeries, POWER, Tivoli and WebSphere are trademarks of International Business Machines Corporation in the United States, other countries or both.

Intel and Itanium are trademarks of Intel Corporation in the United States, other countries or both.

Java and all Java-based trademarks are trademarks of Sun Microsystems, Inc., in the United States, other countries or both.

Linux is a trademark of Linus Torvalds in the United States, other countries or both.

Microsoft and Windows are trademarks of Microsoft Corporation in the United States, other countries or both.

Other company, product and service names may be trademarks or service marks of others.

References in this publication to IBM products or services do not imply that IBM intends to make them available in all countries in which IBM operates.