



ViewONE HTML and Installation Manual

Version 4.0

Last Updated: 24th May 2013

Copyright Daeja Image Systems. All Rights Reserved.

Email: info@daeja.com
Web site: <http://www.daeja.com>

Contents

<i>Introduction</i>	8
<i>The Applet user interface</i>	9
<i>Installing ViewONE</i>	10
<i>Setting up Windows servers</i>	12
<i>Applet Parameters</i>	15
Checking your parameters	15
Opening documents and images	16
Filename	16
PageNumber	16
Page<N>	16
Thumb<N>.....	17
FileList.....	17
FileDir.....	18
Doc<N>	19
FileBase	20
BaseFilename.....	21
PageCount.....	21
PrefetchPages.....	21
PrefetchThumbs	22
Description.....	22
SuppressMenusDuringOpen	22
ResourceToUrlEncoding.....	23
processHttpRedirects	23
httpRedirectAllowSSL.....	23
httpRedirectCountLimit	23
Text File Handling	25
textfilterMimetypes.....	25
textfilterLocalFileExtensions.....	25
allowTextFilterDisplayAnyFile	26
ignoreTextFilterMimetypes	26
textFilterWrapping.....	26
textFilterPageBreaks	27
textFilterPageHeight	27
textFilterPageWidth	27
textEncoding	27
Labels	29
PageLabel<N>	29
PageLabelColor<N>	29
DisplayPageLabels.....	29
ThumbLabel<N>.....	29
ThumbLabelColor<N>.....	30
PrintLabels	30
PrintLabelBorder	30
PageLabelNullifier	30
Description.....	31

DocRef<n>	31
Hyperlinks.....	32
Hyperlink	32
Hyperlink<N>	32
HyperlinkDbClick	32
OpenOnClick	32
OpenOnClickKey	33
OpenOnClickTarget	33
File options	34
FileButtonOpen	34
FileButtonClose	34
FileButtonSave	34
NewWindowButtons	34
FileKeys	35
FileKeyOpen	35
FileKeyClose	35
FileKeySave	35
NewWindowKey	36
FileMenus	36
FileMenuOpen	36
FileMenuClose	37
FileMenuSave	37
MenuNewWindow	37
DefaultSaveFilename	37
ImageSave	38
ImageSaveServlet	38
ImageSavePost	39
SaveButtonToServer	39
MakeSaveNameSafe	39
Java2FileDialogs	40
TiffSaveColor	40
FixedSavePath	41
enableDocButtons	41
displayDocButtons	41
saveDocumentWithoutAnnotations	42
Viewing options	43
ViewButtons	43
ViewButtonsDetail	43
PageButtons	44
ViewKeys	44
PageKeys	45
ViewMenus	45
PageMenus	46
PreferenceMenus	47
ViewMode	48
NWViewMode	49
Scrollbars	50
AutoScroll	50
flickScrollEnabled	50
DraggingEnabled	50
ThumbsWidth	51
ThumbsHeight	51
SynchronizeThumbs	51

Zoom, xScroll and yScroll	51
ExternalMagnifier	51
MagnifierPersistent	52
MagnifierFollowMouse	52
DefaultZoomDoc	52
NewWindow	53
KeepScroll	53
DisplayColorProgressively	54
DisplayMonoProgressively	54
docCompare	54
defaultLinkViewer	55
Image options.....	56
AdjustOptions	56
AdjustBars	56
AdjustControls1	56
AdjustControls4	56
AdjustControls8	57
AdjustControls24	57
Brightness	57
Contrast	57
Luminance	58
persistViewProcessingProperties	58
ImageForeColor	58
ImageBackColor	58
ImageButtons	59
VisibleImageButtons	60
InvertButtons	60
EnhanceButton	60
EnhanceMenu	60
EnableSharpEnhanceModes	60
InfoOptions	61
InfoOptionsShowSize	61
InfoOptionsShowSizeCm	61
ImageKeys	62
VisibleImageKeys	62
InvertKeys	62
ImageMenus	63
VisibleImageMenus	63
InvertMenus	64
FlipOptions	64
MagOptions	65
Zoom100Options	65
Invert	65
Photometric	66
Enhance	66
EnhanceColor	66
AutoEnhanceBlack	67
Rotation	67
PageRotation<N>	67
Flip	68
AllowHeaderTags (rotation)	68
AllowHeaderTagsOnPrint (rotation)	68
AllowResolutionTags	69
Zoom100	69

Scale.....	70
AreaZoom.....	70
AreaZoomSticky.....	70
DefaultTransformDoc (previously DefaultRotateDoc).....	71
ThirdPartyFileCache.....	71
Printing options	72
PrintButtons	72
PrintKeys	72
PrintMenus.....	73
PrintStickyMenus.....	73
DefaultPrintDoc	73
PrintAccelerator	74
AllowPrintHeader	74
PrintHeader	74
PrintJobName	75
PrintDialog.....	75
Java2PrintSetupDialog.....	75
ReusePrinter.....	76
Printer	76
MultiPrintNum.....	76
MultiPrintGap	77
MultiPrintSingleHeader	77
PrintAutoRotate	77
PrintWithUserSettings	78
PrintDocumentAllowed	78
PrintRangeAllowed.....	78
PrintVisibleAllowed	78
PrintSelectedAllowed	79
PrintComplete	79
Separator<N>.....	79
SeparatorList.....	82
PrintOriginalSizeAllowed.....	83
PrintOriginalSizeOverride	84
ImageTooLargePrintHeader	84
PrintMono	85
PrintMonoAllowed	85
PrintAcceleratorForgetSettings.....	86
PrintAcceleratorReverseMono.....	86
PrintingFontSelectionEnabled	86
PrintingFontName.....	86
PrintingFontSize	87
PrintingFontBold	88
ForcePrintsPerPage.....	88
PrintingColorHeader	88
DisablePrintCopies	89
Graphics	90
BackColor.....	90
ActiveColor.....	90
ActiveButtons	90
HighlightColor	90
ToolTips.....	91
ToolTipsBackground	91
ToolTipsForeground	91

TooltipsMaxLength	91
RetrievalTextDelay	91
ImageDecodeTextDelay	92
ShowHotKeys	92
StatusBar	92
ProgressBar	92
ExtraRetrievalMessages	92
SplitBarAllowed	93
ImageToolbarCollapsed	93
ViewToolbarCollapsed	93
ToolbarExpandAllowed	93
ToolbarExpandDelay	93
ToolbarCollapseDelay	94
Custom toolbar buttons	95
Bar<N>Button<N>	95
CustomResource<N>	97
Theme	97
Local Cache Path.....	98
CachePath	98
UseWindowsTempPath	98
Miscellaneous.....	99
AllButtons.....	99
AllKeys	99
AllMenus	99
ClipOptions.....	100
SelectMenus.....	101
SelectKeys	101
HelpMenus.....	102
HelpURL.....	103
HelpTarget	103
RouteDocs.....	104
RouteTarget	104
RouteHTML	104
RouteHTMLTarget	104
RouteXML	105
RouteXMLTarget.....	105
RedirectNotFound.....	105
RedirectTarget	105
TimeOut	106
EventHandler	106
EventHandlerJson	107
ServerEventHandler.....	107
ServerEventInterest.....	108
ServerFileMonitor.....	108
InitialFocus	108
FocusBorder.....	108
SaveExtension.....	109
EmptyOnClose.....	109
Obfuscate	109
ThumbDbClickSelect	109
ThumbDbClick	110
TraceNet	111
RenderSupport	111

EmptyClipboardOnClose	111
UseErrorFiles	112
KeepAlive	112
KeepAliveTime	112
SystemInfoShortcutEnabled	112
HtmlListShortcutEnabled	113
MouseRightButtonEnabled	113
DisableShutdownDialogs	113
abortSaveOnShutdown	113
cacheMenus	114
tiffSaveColor	114
Changing and logging image retrieval error messages	115
Configuring retrieval error messages	115
Text file options	117
Image file options	118
Logging retrieval errors	118
<i>APPENDIX A: Sample Server-side 'Save' Object.....</i>	<i>120</i>
i) ASP/VBScript example	120
<i>APPENDIX B: ViewONE available fonts.....</i>	<i>123</i>
<i>APPENDIX C: Deprecated Microsoft JVM</i>	<i>124</i>
Declaration of .cab files	124
Java1NTBackgroundPrinting	125
Pre-Loader	125



Introduction

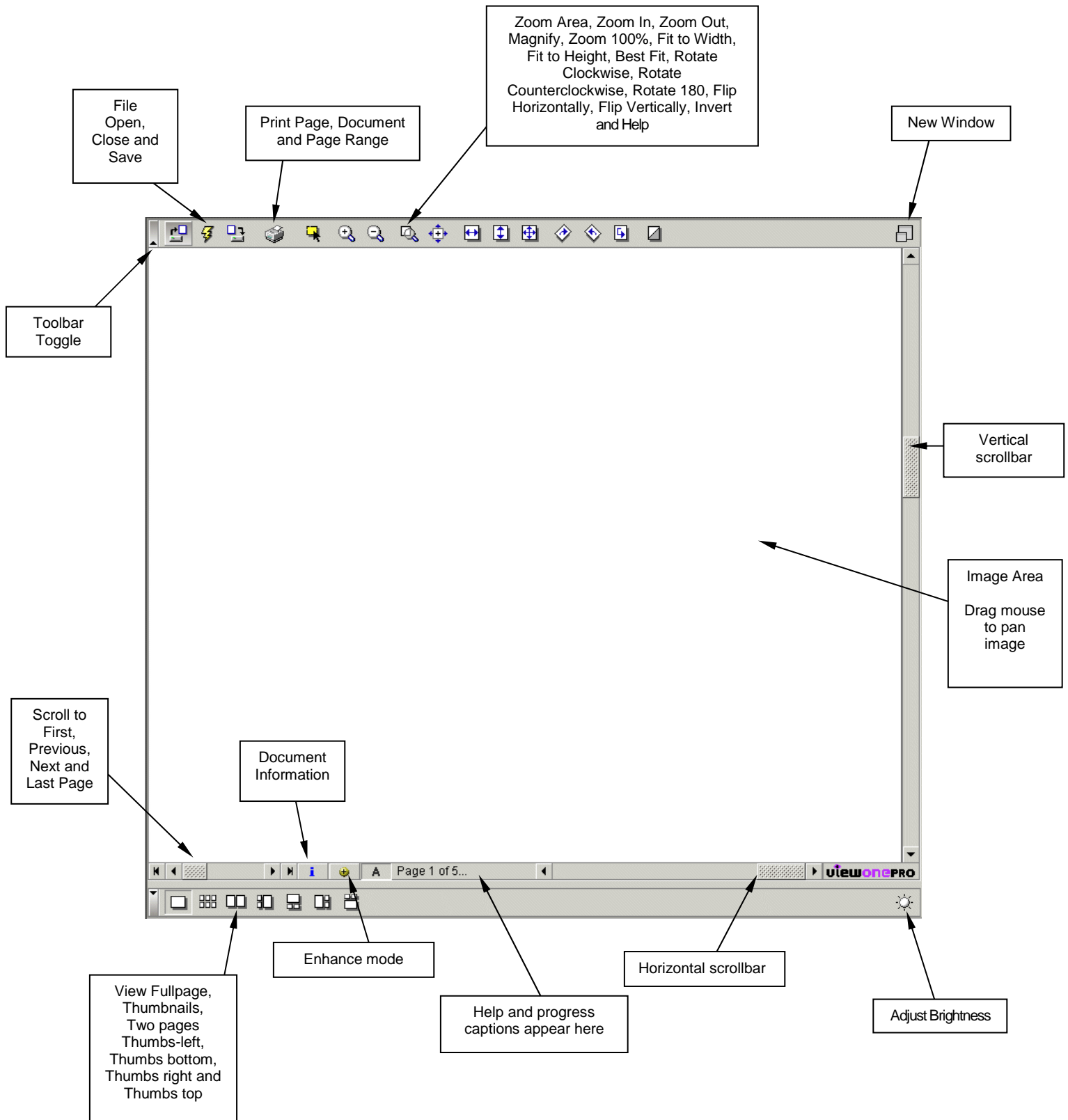
ViewONE is a Java applet that extends your web browser so that you can view, zoom, magnify, scroll, pan, rotate and print your images and image documents quickly and easily.

This document is the Applet installation and HTML Manual.

For further information about ViewONE please consult the following documents...

- ViewONE Pro HTML Manual
- ViewONE User Manual
- ViewONE JavaScript API Manual
- ViewONE Annotations User Manual
- ViewONE Annotations Configuration Manual
- Various White Papers for in-depth analysis of specific areas
- Latest ViewONE release notes found at www.daeja.com/support/updates.asp?id=3

The Applet user interface



HTML:

Installing ViewONE

To install ViewONE on your web site you must first download the 'Update' zip file from the Daeja web site. This can be found by visiting www.daeja.com/support/login.asp.

After unzipping the downloaded file you should have a directory named "**v1files**". This directory contains the essential files required to install and use ViewONE.

Copy **all** files found in the "**v1files**" directory to your web server, preferably in a separate directory similarly named.

To use **ViewONE Standard**** on your web site, setup a web page containing the following HTML...

```
<APPLET CODEBASE = "."  
ARCHIVE = "ji.jar"  
CODE = "ji.applet.jiApplet.class"  
NAME = "ViewONE"  
WIDTH = "100%"  
HEIGHT = "97%"  
HSPACE = "0"  
VSPACE = "0"  
ALIGN = "middle">  
</APPLET>
```

Please note: you must change the "codebase" value to point to the location of the 'v1files' directory that contains ViewONE's resource files (i.e. ji.jar, daeja2.jar and other .v1 files).

The codebase parameter specifies the location of the ji.jar, daeja2.jar and other files relative to the location of the HTML page. So in this case it specifies the "current directory" which is ".".

If you set this up and the viewer fails to run and you see messages that refer to "java.lang.ClassNotFoundException" then try using the full URL to the location of the codebase files rather than a relative path in the first instance

(Note: PARAM NAME="cabbase" is required for users of the deprecated Microsoft JVM – see Appendix C for further details).

Our downloadable demos include examples to assist you.

**** ViewONE Pro: Please see ViewONE_Pro.pdf manual for instructions on installing ViewONE Pro. ****

Important Note with use of "localhost" and/or IP Address "127.0.0.1"

Please note that when referencing viewer and/or image files you should NOT use either "localhost" or IP address "127.0.0.1" in the URL. These are not allowed in full production files and are restricted within the code itself such that if you do use them, the core viewer will function but you may see unexpected behavior with more complex code. To avoid such issues, you should use the machine name by way of reference, for example:

Applet codebase ="http://localhost:8080/v1files"

becomes:

Applet codebase ="http://mymachinename:8080/v1files"

or:

<param name="filename" value="http://127.0.0.1/MyDocumentStore/example.tif">

becomes:

<param name="filename" value="http://mymachinename/MyDocumentStore/example.tif">

Setting up Windows servers

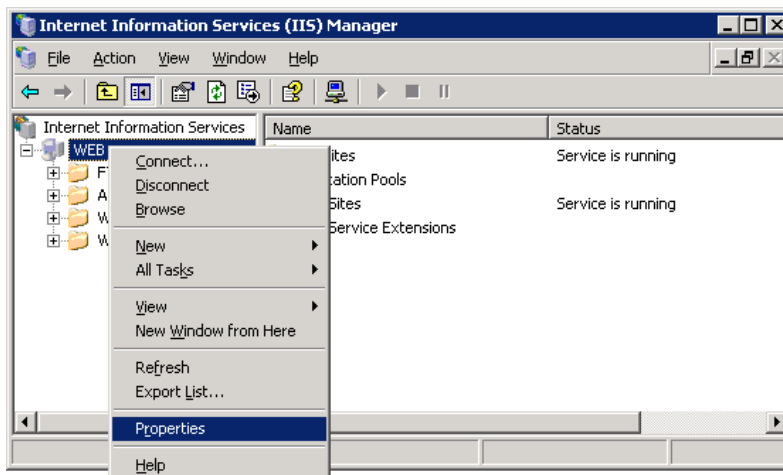
ViewONE does not require a specific web server or server platform, but if your server is running Windows 2003 or later with IIS6 or later, you will have to add two file extensions to your web site "MIME Types" (for both ViewONE Standard and ViewONE Pro).

Unlike previous Windows servers, Windows 2003 and later only permits only a limited number of file extensions by default, all others must be enabled manually using the IIS console.

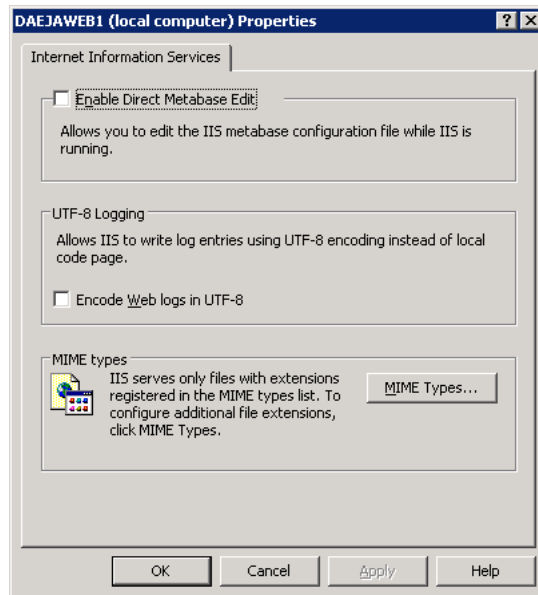
The additional mime types required to operate ViewONE are ".v1" and ".ant". Note: if they are not added to IIS 6 then ViewONE will display messages during start-up that files with these extensions could not be found).

Both file extensions should be set to the mime type "application/octet-stream", as follows..

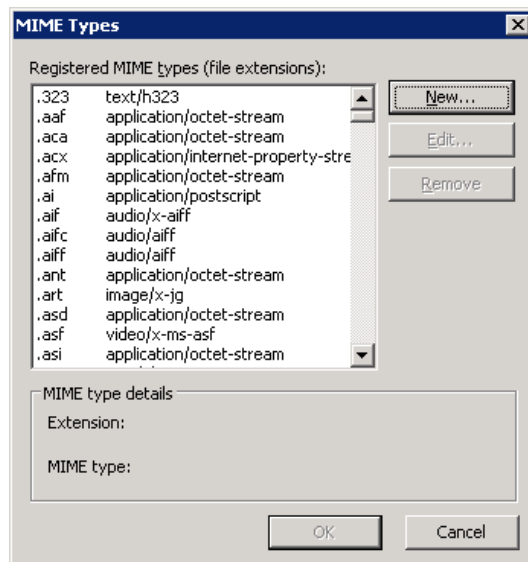
Open up IIS 6 console, then right-click on the top web space entry to highlight "Properties"...



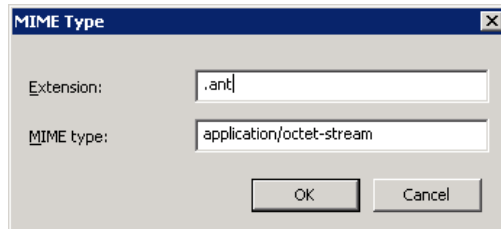
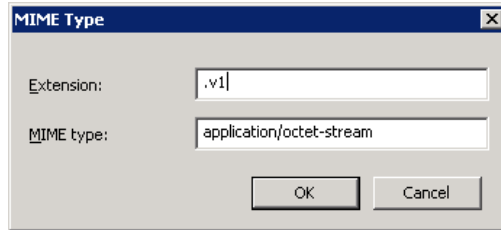
Click on the properties menu to display the properties dialog...



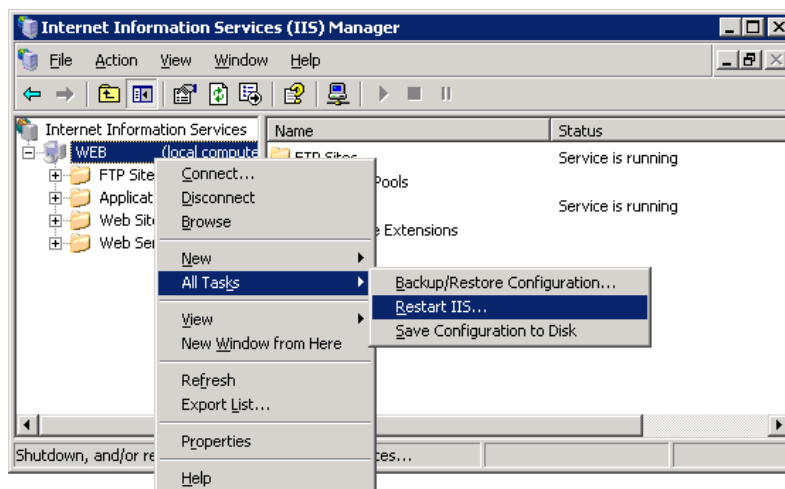
Click on the MIME Type button to display the MIME Type dialog...



Use the New button to add two new MIME types...



Click OK until you return back to the main console dialog. Right click once again on the main web space entry. Click on the Restart IIS menu to activate the new MIME Types.



Applet Parameters

The following list describes the optional (**ViewONE Standard and ViewONE Pro**)** parameters. The general format for adding a parameter to your HTML is as follows:

```
<PARAM NAME="name" value="value">
```

Where *name* is replaced by the parameter name and *value* replaced by the parameter value.

All parameters are specified as strings.

Filenames and hyperlink addresses are expressed using the internet URL address format (Uniform Resource Locator), e.g. "http://mysite/myimage.tif". If any part of the address before "myimage.tif" is not included, the applet will assume a base address, which is the same as the applet location (the codebase).

With the exception of filenames and hyperlink addresses, all parameters are case insensitive.

Some parameters are available only for ViewONE Version 3 onwards (marked with **V3-Only**).

Checking your parameters

If you are unsure whether ViewONE has processed any of your parameters correctly, or are having problems using a particular parameter, then a special hot key (Shift-T) can be used to display the processed parameters. To use this key, start ViewONE (by visiting your web page that contains the applet), click in the center of the applet then hold the Shift key down while pressing key "T".

(If a parameter that you have specified in your HTML does not appear in the list provided by Shift-T then this usually indicates that you have misspelt the parameter name in the HTML).

**** ViewONE Pro: Please see ViewONE_Pro.pdf manual for details of ViewONE Pro's additional parameter options.**

Opening documents and images

Parameter:

Filename

```
<PARAM NAME="filename" value="images/myimage.tif">
```

Specifies the filename of the document to be viewed.

This parameter can specify either the filename relative to the code base (as above) or the full URL. The code base is specified in the HTML code for the applet (see previous example). An example of a full URL is as follows...

```
<PARAM NAME="filename" value="http://mysite/imagesmyimages.tif">
```

Note: Do not use the backslash character ("\") in the value string. If you have to, use a double backslash ("\\") to represent each backslash character.

Parameter:

PageNumber

```
<PARAM NAME="pageNumber" value="1">
```

Specifies the initial page of the document to be viewed (default is 1).

Parameter:

Page<N>

```
<PARAM NAME="page1" value="images/page1.tif">
```

```
<PARAM NAME="page2" value="images/page2.tif">
```

```
<PARAM NAME="page3" value="images/page3.tif">
```

If the pages of the document are split into separate files then this parameter is used to specify the file for each page. The above document has three pages.

This parameter can specify either the filename relative to the code base (as above) or the full URL, e.g....

```
<PARAM NAME="page1" value="http://mysite/images/page1.tif">
```

Viewing several multi-page tiffs or pdfs as a single document:

To open several multi-page tiffs or pdfs at the same time, then the "page<N>" parameter can be used to specify specific pages of as many multi-page tiff or pdf filenames as you require (using the # qualifier), e.g....


```
<PARAM NAME="page1" value="images/doc1.tif#1">  
<PARAM NAME="page2" value="images/doc1.tif#2">  
<PARAM NAME="page3" value="images/doc2.tif#1">
```

Where...

doc1.tif#1 = page 1 of doc1.tif
doc1.tif#2 = page 2 of doc1.tif
doc1.tif#1 = page 1 of doc2.tif

Or...

doc1.pdf#1 = page 1 of doc1.pdf
doc1.pdf#2 = page 2 of doc1.pdf
doc2.pdf#1 = page 1 of doc2.pdf

The first example will "appear" to open a single document with 3 pages however, the first two pages come from the multi-page tiff file "doc1.tif" and the third page comes from "doc2.tif".

The number following the # qualifier, can be any valid page number for the associated tif file.

Parameter:

Thumb<N>

```
<PARAM NAME="thumb1" value="images/page1-t.tif">  
<PARAM NAME="thumb2" value="images/page2-t.tif">  
<PARAM NAME="thumb3" value="images/page3-t.tif">
```

In some instances, it may be advantageous to have separate files for the thumbnails to assist in browsing of thumbnails (smaller files are quicker to download and view). This parameter allows a separate thumbnail file to be specified for each page.

Notes: If you use this parameter you must ensure that a file is specified for all pages of the document and that they match the corresponding full-resolution files specified using the "page<N>" parameter.

This parameter is only for use only when the "page<N>" parameter is used.

Parameter:

FileList

```
<PARAM NAME="filelist" value="mylist/list.lst">
```

This parameter offers an alternative option to page<N>. It allows a file to be supplied which contains a list of pages.

This is useful for very large documents because it removes the need to specify each page<N> parameter.

It can also be used to keep the HTML constant, by changing the source list instead of changing the HTML between different documents.

The file is a text file and each entry in the file can be separated by a <CR>, <CR><LF> or <LF> character. The location of the files can be absolute or relative to the code base of the applet, e.g....

File: mypages.lst contains...

```
mypages/page1.tif  
mypages/page2.tif  
mypages/page3.tif  
mypages/page4.tif
```

If you want to include separate thumbnail files, then the following format should be used...

Add a "t<space>" before the thumbnail file name as follows...

File: mypages.lst now contains...

```
mypages/page1.tif  
t mypages/thumb1.tif  
mypages/page2.tif  
t mypages/thumb2.tif  
mypages/page3.tif  
t mypages/thumb3.tif  
mypages/page4.tif  
t mypages/thumb4.tif
```

Since version X.1.192 of the viewer, this parameter can also be used to point to a single filename. This functionality is useful in the scenario where you may not know if you are dealing with a single document or multiple pages.

To put the viewer in filename mode, return the following in your filelist:

```
filename=http://yourhost.com/file.tiff
```

It is invalid to specify anything else in the file if you have a filename specified.

Parameter:

FileDir

```
<PARAM NAME="fileDir" value="c:/myimages">
```

This parameter can be used to specify a local drive and directory. ViewONE will search that path (including subdirectories) to locate all files. They will be opened, as one document (each file is assumed to be a single page image file).

This can be useful for cases where images are stored on hard drives, accessible locally (or via a mapped drive) and the user wished to view all files in that directory. You must always use forward-slashes as the path separator.

Parameter:

Doc<N>

```
<PARAM NAME="doc1" value="docParams1.txt">
<PARAM NAME="doc2" value="docParams2.txt ">
<PARAM NAME="doc3" value="docParams3.txt ">
```

This parameter allows a list of documents to be specified. Each document can have its own set of parameters which must be specified in a parameters file. This parameter informs ViewONE which parameters file to use for each document (see format description below). The default location for the parameters file is the code-base, however you can specify a location relative to this, or an absolute URL as usual.

When this parameter is used, additional buttons will automatically be made visible that allow the user to navigate the document "list" forwards and backwards.

The format of the parameters file is as follows...

A text file, with each line separated by a <CR>, <CR><LF> or <LF>.

Each line defines a single parameter (as described in the HTML manual), i.e....

File: docParams1.txt contains...

```
filename = "myfile.tif "
printHeader = "My first document "
```

or...

File: docParams2.txt contains...

```
page1 = "page1.tif "
page2 = "page2.tif "
page3 = "page3.tif "
printHeader = "My second document "
```

It is possible to specify items inside a parameters file that are also included in the HTML parameter list. In this case, the items in the parameters file take precedence. For example...

Mywebpage.htm initiates the applet with the invert parameter set to true. It also configures the applet to use docParamA.txt and docParamB.txt as the source for its documents. The HTML parameters involved are therefore...

```
<PARAM NAME="invert" value="true">
<PARAM NAME="doc1" value="docParamsA.txt">
<PARAM NAME="doc2" value="docParamsB.txt">
```

...where docParamsA.txt details an image path and sets the invert parameter to false, and docParamsB.txt details just an image path. As follows...

File: docParamsA.txt contains...

```
Filename = "myfileA.tif "
Invert = "false"
```

and...

File: docParamsB.txt contains...

```
Filename = "myfileB.tif "
```

When the viewer is started the invert parameter is set to true (because our HTML parameter above sets it to true). However, when it opens docParamsA.txt (which is almost immediately) then the invert flag is overridden to false. Therefore, "myfileA.tif" is displayed as normal.

When the user moves on to docParamsB.txt (by clicking on the next document button) then the initial invert flag comes back into play, because the second set of document parameters does not include a value for invert. Therefore, "myfileB.tif" is displayed inverted.

Not all parameters can be used in parameter files. Only document specific parameters are valid, such as Rotation, Flip, Zoom, PageLabel</N>, ThumbLabel</N>, FileList and Page</N>. Viewer specific parameters are invalid, such as Obfuscate, button and menu configuration options.

Please note that if a particular parameter is used within a document parameter file, it is best practice to make sure that same parameter is explicitly set to a value in ALL parameter files and not to rely on the default parameter value.

Parameter:

FileBase

```
<PARAM NAME="fileBase" value="http://www.daeja.com/docs/">
```

If the viewer is provided with any relative paths in the "filename", "page</N>", "thumb</N>" or "annotationFile" (see Annotation Configuration Manual) parameters then it will look for those paths relative to its codebase property.

When this parameter is used the viewer will look for those paths relative to the path specified here. The value specified must be an absolute path (the full URL – not a relative path).

Parameter:

BaseFilename

<PARAM NAME="baseFilename" value="http://www.daeja.com/script.pl?docid=2">

This parameter is used with the "pageCount" parameter to make it easier to view documents using a server-side object (CGI, ASP, EXE, etc.). The value specified is the basic form of the object's URL.

When the user starts ViewONE and requests a page, the viewer concatenates the URL value with a "page" parameter and the requested page value before calling the object. For example, the final URL that ViewONE might use to call a server-side object for the second page of a document would look something like this...

http://www.daeja.com/script.pl?docid=2&page=2

Note: The "pageCount" parameter is required for this parameter to have an effect.

Parameter:

PageCount

<PARAM NAME="pageCount" value="3">

This parameter is used with the "baseFilename" parameter. The value specified is the number of pages that are present in the document.

Note: This "baseFilename" parameter is required for this parameter to have an effect.

Parameter:

PrefetchPages

<PARAM NAME="prefetchPages" value="2">

When this parameter is set to any value above zero and when used with the "page<n>" parameter, ViewONE will read-ahead the number of pages specified after the current page has been viewed. Depending on the specific needs of the user and the network setup, this read-ahead mechanism can help improve document browsing speed.

The value corresponds to the number of read-ahead pages, in the direction that the user browses a document. So, for example, if the user views page 1, ViewONE will read-ahead pages 2 and 3 with the above value.

If the user then views page 2, ViewONE will read-ahead page 4 (it has already read-ahead page 3). Page 3 will appear quickly since it had already been read-ahead while viewing page 1.

If the user then views, say, page 10, ViewONE will read ahead pages 11 and 12, on so on.

If then, finally, the user views page 8 (from say page 10), ViewONE will read-ahead pages 7 then 6, i.e. backwards because the user has changed their "direction" of browsing the document.

This process can improve viewing for browsing but it must be noted that it may also increase the network and server load. The benefit of pre-fetching depends on the type of browsing usually performed by users, the network speed and the ability for the server to keep pace with such read-ahead mechanisms.

Note: When viewing COLD documents using the Backgroundimage HTML parameter (documented in the ViewONE Pro manual), the background template image(s) are also prefetched.

Parameter:

PrefetchThumbs

<PARAM NAME="prefetchThumbs" value="2">

When this parameter is set to any value above zero and when used with the "thumb<n>" parameter, ViewONE will read-ahead the number of thumbnail pages specified after the current thumbnail has been viewed. Depending on the specific needs of the user and the network setup, this read-ahead mechanism can help improve document browsing speed.

See description of "prefetchPages" for further information.

Note: When viewing COLD documents using the Backgroundimage HTML parameter (documented in the ViewONE Pro manual), the background template image(s) are also prefetched.

Parameter:

Description

<PARAM NAME="description" value="docXYZ">

A string value that can be used to set the description of a document. The description is used in the status bar message when retrieving files, for the above example, the status bar would display:

"Opening docXYZ...." Or "Opening docXYZ, page 2...." Depending on the page being retrieved over the net.

Parameter:

SuppressMenusDuringOpen

<PARAM NAME="suppressMenusDuringOpen" value="true">

If enabled, stops the popup menu (when right clicking mouse in ViewONE or pressing the "]" key) from being displayed while an image is loading.

The default value is "false" which allows the menu to be displayed at any time.

Parameter:

ResourceToUrlEncoding

(Version Standard 3.1.198+, Pro 1.1.198+)

<PARAM NAME="ResourceToUrlEncoding" value="loose">

Settings this parameter to the value "loose" will allow Chinese characters to be used in URLs.

Parameter:

processHttpRedirects

(Version Standard 3.1.200+, Pro 1.1.200+)

<PARAM NAME="processHttpRedirects" value="true">

By default the JRE takes care of all redirect response codes coming back from the server. Setting this parameter to "true" will switch to using the viewers own internal method for processing these requests.

The default value for this parameter is "false".

Parameter:

httpRedirectAllowSSL

(Version Standard 3.1.200+, Pro 1.1.200+)

<PARAM NAME="httpRedirectAllowSSL" value="true">

By default the JRE will not follow a redirect from https to http – this is by design so if you want an https to http redirect to be honoured then you should set this parameter to "true"

The default value for this parameter is "false"

Note: This parameter is disabled by default unless the "processHttpRedirects" parameter is set to "true".

Parameter:

httpRedirectCountLimit

(Version Standard 3.1.200+, Pro 1.1.200+)

<PARAM NAME="httpRedirectCountLimit" value="10">

This parameter allows you to specify the number of times the viewer will attempt to process a redirect before throwing an error if it still fails after the specified number of times.

The default value for this parameter is "5"

Note: This parameter is disabled by default unless the "processHttpRedirects" parameter is set to "true".

Text File Handling

Parameter:

textfilterMimetypes

(Version Standard 3.1.124+, Pro 1.1.124+)

<PARAM NAME="textFilterMimetypes" value="application/octet-stream">

This parameter is used to add MIME Media Types that the text filter can be used to display if the type cannot be displayed by one of the other filters within ViewONE.

The text filter is used as a filter of last resort if none of the other filters within ViewONE can display the file. When the file is being retrieved using an HTTP Request, the MIME Media Type that is returned in the HTTP Response can help ViewONE determine whether it can be viewed.

The format of the parameter value is a comma-separated list of MIME Media Types. The subtype can be wild-carded using the "*", but partial matches on value are not valid. For example, "application/*" is valid, "application/octet-stream" is valid, but "application/oct*" is not valid.

Please note that this functionality cannot be used to override the display of other file types, for example "image/tiff" or "application/pdf".

By default "text/*" is the only MIME Media Type used by the text filter. This means any file type that has a main content Type of "text" is caught by the text filter. It does not matter what the subtype is. Using this parameter can add to the list. By default the parameter is empty.

Parameter:

textfilterLocalFileExtensions

(Version Standard 3.1.124+, Pro 1.1.124+)

<PARAM NAME="textfilterLocalFileExtensions" value="txt,log">

This parameter is used to change the extensions of local files that the text filter can be used to display.

The format of the parameter value is a comma-separated list of extensions (not including the dot). Please note that this functionality cannot be used to override the display of other file types, for example "tif" or "pdf".

The default for this parameter is 'txt,text,plain'. This means any file with an extension of ".txt", ".text" or ".plain" is caught by the text filter.

Parameter:

allowTextFilterDisplayAnyFile

(Version Standard 3.1.124+, Pro 1.1.124+)

<PARAM NAME="allowTextFilterDisplayAnyFile" value="true">

This parameter is used to change the text file handling to the behavior that existed in Standard Version 3.1.112 and Pro Version 1.1.112.

Setting this parameter to "true" overrides the behaviour of three parameters, "textFilterMimeType", "textFilterLocalFileExtensions" and "routeDocs". The text filter will always attempt to display an image if none of the other filters within ViewONE can display it.

The default for this parameter is "false".

Parameter:

ignoreTextFilterMimetypes

(Version Standard 3.1.148+, Pro 1.1.148+)

<PARAM NAME="ignoreTextFilterMimetypes" value="false">

There are 2 steps to working out which of the file type filters is used to display a file. The first step is to use the mime-type defined. If that mime-type cannot be used

This parameter is used to change whether the mime-type of the file is used to determine the extensions of local files that the text filter can be used to display.

The format of the parameter value is a comma-separated list of extensions (not including the dot). Please note that this functionality cannot be used to override the display of other file types, for example "tif" or "pdf".

The default for this parameter is 'txt,text,plain'. This means any file with an extension of ".txt", ".text" or ".plain" is caught by the text filter.

Parameter:

textFilterWrapping

(Version Standard 3.1.142+, Pro 1.1.142+)

<PARAM NAME="textFilterWrapping" value="true">

This parameter is used to disable the default functionality of the viewer when it comes to displaying text files and activates the parameters that follow in this section of the manual.

The default for this parameter is "false".

Parameter:

textFilterPageBreaks

(Version Standard 3.1.142+, Pro 1.1.142+)

<PARAM NAME="textFilterPageBreaks" value="true">

Setting this parameter to "true" will mean that the viewer interprets FF (Form Feed - 12) characters in text files as a page break and paginate the document accordingly.

Note: This parameter is disabled by default unless the "textFilterWrapping" parameter is set to "true".

Parameter:

textFilterPageHeight

(Version Standard 3.1.142+, Pro 1.1.142+)

<PARAM NAME="textFilterPageHeight" value="<N>">

Setting this parameter allows you to specify a fixed number of lines to display as a single page by inserting an automatic page break at the (Nth +1) line.

Note: This parameter is disabled by default unless the "textFilterWrapping" parameter is set to "true".

Parameter:

textFilterPageWidth

(Version Standard 3.1.142+, Pro 1.1.142+)

<PARAM NAME="textFilterPageWidth" value="<N>">

Setting this parameter allows you to specify a fixed number of characters to display across the viewed page by inserting an automatic line break at the (Nth +1) character running from left to right.

Note: This parameter is disabled by default unless the "textFilterWrapping" parameter is set to "true".

Parameter:

textEncoding

(Version Standard 3.1.198+, Pro 1.1.198+)

<PARAM NAME="textEncoding" value="UTF8">

Files with non-standard characters need to be encoded correctly for the viewer to be able to display such characters and where a text file has the encoding embedded in it, the viewer should detect the encoding and use it to display the characters correctly.

However, it may be the case that the encoding is not contained within the file itself but setting this parameter allows you to specify a known encoding and forces the viewer to use this encoding to display special characters when it encounters a text file.

Labels

Parameter:

PageLabel<N>

```
<PARAM NAME="pageLabel1" value="My first page">  
<PARAM NAME="pageLabel2" value="My second page">  
<PARAM NAME="pageLabel3" value="My third page ">
```

This parameter allows you to specify a different label for each page; pageLabel1 for page 1, pageLabel2 for page 2, etc. The text will appear in the bottom right corner of the full-page display area.

Parameter:

PageLabelColor<N>

```
<PARAM NAME="pageLabelColor1" value="255,255,192">  
<PARAM NAME="pageLabelColor2" value="255, 192, 255">  
<PARAM NAME="pageLabelColor3" value="192,255, 255">
```

This parameter allows you to specify the color of each label. The color is defined using standard RGB values. The default color is white (i.e. when not color label is found).

Parameter:

DisplayPageLabels

```
<PARAM NAME="displayPageLabels" value="false">
```

(Version Standard 3.0.332+, Pro 1.0.332+)

When set to false, this parameter turns off the displaying of page labels in the viewer. Any page labels that are set will still be added when printing.

The default for this parameter is "True"

Parameter:

ThumbLabel<N>

```
<PARAM NAME="thumbLabel1" value="My first page">  
<PARAM NAME="thumbLabel2" value="My second page">  
<PARAM NAME="thumbLabel3" value="My third page ">
```

This parameter allows you to specify a different label for each thumbnail; thumbLabel1 for thumbnail 1, thumbLabel2 for thumbnail 2, etc. The text will appear in the bottom right corner of each corresponding thumbnail.

Parameter:

ThumbLabelColor<N>

```
<PARAM NAME="thumbLabelColor1" value="255,255,192">
<PARAM NAME="thumbLabelColor2" value="255, 192, 255">
<PARAM NAME="thumbLabelColor3" value="192,255, 255">
```

This parameter allows you to specify the color of each thumbnail label. The color is defined using standard RGB values. The default color is white (i.e., when a color label is not found).

Parameter:

PrintLabels

```
<PARAM NAME="printLabels" value="false">
```

ViewONE will print page labels by default (if any are defined). This parameter can be used to turn off printing of labels should they not be required.

Note: Thumbnail labels cannot be printed at present.

Parameter:

PrintLabelBorder

```
<PARAM NAME="printLabelBorder" value="true">
```

ViewONE version 3.0.228+ (with Print-Accelerator) can print borders around the labels (lower right of the image). Use this parameter to enable the feature.

Note: Currently the Print-Accelerator is available only for MS Windows users.

Parameter:

PageLabelNullifier

```
<PARAM NAME="pagelabelnullifier" value="-">
```

This parameter allows specific label values to be used as 'null' or 'blank' labels.

For example if you wish to define a label for page 2 but not page 1, the you still need to add PageLabel1 and PageLabel2 to your HTML, but in doing so PageLabel1 must have a value. To overcome this problem, define a PageLabelNullifier then set PageLabel1 to this value.

This parameter applies to PageLabel<N>, ThumbLabel<N> and PrintLabel<N>

Parameter:

Description

<PARAM NAME="description" value="docXYZ">

A string value that can be used to set the description of a document. The description is used in the status bar message when retrieving files, for the above example, the status bar would display:

"Opening docXYZ..." Or "Opening docXYZ, page 2..." Depending on the page being retrieved over the net.

Parameter:

DocRef<n>

<PARAM NAME="docRef1" value="ref000">

A string value that can be used to set a reference number for the specified document.

The document reference can be used in error retrieval files (see page 117) and print separator pages (see page 79).

Hyperlinks

Parameter:

Hyperlink

```
<PARAM NAME="hyperlink" value="newsite.html">
```

Specifies a hyperlink that is activated when the user clicks on the image area.

This parameter can specify either the filename relative to the code base (as above) or the full URL, e.g....

```
<PARAM NAME="hyperlink" value="http://mysite/newsite.html ">
```

Parameter:

Hyperlink<N>

```
<PARAM NAME="hyperlink1" value="newsite1.html">
```

```
<PARAM NAME="hyperlink2" value="newsite2.html">
```

Specifies a different hyperlink for each page of a multi-page document. In the example, for pages 1 and 2. Hyperlinks are activated when the user clicks on the image area.

This parameter can specify either the filename relative to the code base (as above) or the full URL, e.g....

```
<PARAM NAME="hyperlink1" value="http://mysite/newsite1.html ">
```

Parameter:

HyperlinkDbClick

```
<PARAM NAME="hyperlinkDbClick" value="true"> ...or...
```

```
<PARAM NAME="hyperlinkDbClick" value="false">
```

Specifies a hyperlink is activated only when the user uses a double-click on the image. This parameter also affects how the openOnClick parameter performs.

Parameter:

OpenOnClick

```
<PARAM NAME="openOnClick" value="http://myserver/myopenscript.cgi?file=<f>">
```

When this parameter specified, ViewONE will redirect the browser to open the specified page when the user clicks on the image area. This is similar to the hyperlink parameter, however this parameter includes additional options (see following parameters).

The value of this parameter can be a web page, or any server side script/object/exe that generates the HTML for a web page.

If the "hyperlinkDbClick" parameter is set to "true" the link is only followed after a double-click on the image. The default is a single-click operation.

In the above example, we are using a CGI script, and passing to that script an additional value. If you include any of the following optional identifiers then ViewONE will substitute them as follows...

- <f> Will be replaced by the current page filename (or URL as appropriate).
- <fo> Will be replaced by the current page filename only (not including path).
- <x> The "X" co-ordinate on the image, where the user clicked with the mouse.
- <y> The "Y" co-ordinate on the image, where the user clicked with the mouse.
- <r> The rotation of the image display, when the user clicked with the mouse.
- <z> The zoom factor of the image display, when the user clicked with the mouse.

Parameter:

OpenOnClickKey

<PARAM NAME="openOnClickKey" value="g">

When this parameter is specified, ViewONE will only redirect the browser when the key specified here is pressed while clicking on the image with the mouse

Parameter:

OpenOnClickTarget

<PARAM NAME="openOnClickTarget" value="_blank">

When this parameter is specified, ViewONE will redirect the browser in the following ways..

- "_blank" In a new window.
- "_self" In the same window/frame that contains ViewONE.
- "_top" In the top level frame of ViewONE's window (this will be "_self" if frames are not used).
- "_parent" In ViewONE's parent frame (this will be "_self" if frames are not used).
- name* In window which is named *name*. If a window of this name does not exist, then a top-level window will be created with this name.

File options

The file buttons are:

Open, Close, Save.



FileButtonOpen

Parameter:

```
<PARAM NAME="fileButtonOpen" value="false"> ...or...  
<PARAM NAME="fileButtonOpen" value="true">
```

Specifies whether the toolbar includes an open file button. A value of "true" (default) indicates the button is visible and "false" indicates it is not.

Parameter:

FileButtonClose

```
<PARAM NAME="fileButtonClose" value="false"> ...or...  
<PARAM NAME="fileButtonClose" value="true">
```

Specifies whether the toolbar includes a close file button. A value of "true" (default) indicates the button is visible and "false" indicates it is not.

Parameter:

FileButtonSave

```
<PARAM NAME="fileButtonSave" value="false"> ...or...  
<PARAM NAME="fileButtonSave" value="true">
```

Specifies whether the toolbar includes a save file button. A value of "true" (default) indicates the button is visible and "false" indicates it is not.

Parameter:

NewWindowButtons

```
<PARAM NAME="newWindowButtons" value="false"> ...or...  
<PARAM NAME="newWindowButtons" value="true">
```

Specifies whether the new window button and popup menus are available. A value of "true" (default) indicates they are available and "false" indicates they are not.



Parameter:

FileKeys

<PARAM NAME="fileKeys" value="false"> ...or...
<PARAM NAME="fileKeys" value="true">

Specifies whether the hot keys for file operations are enabled. A value of "true" (default) indicates the keys are enabled and "false" indicates they are not.

The keys are as follows:

Open File	O
Open URL	Shift-O
Close	C
Save	F
New window	W

Note: For multi-page tiffs the save key saves the whole document, for others it saves the current page only.

Parameter:

FileKeyOpen

<PARAM NAME="fileKeyOpen" value="false"> ...or...
<PARAM NAME="fileKeyOpen" value="true">

Specifies whether the hot key for *Open File* operation is enabled. A value of "true" (default) indicates the key is enabled and "false" indicates it is not.

Parameter:

FileKeyClose

<PARAM NAME="fileKeyClose" value="false"> ...or...
<PARAM NAME="fileKeyClose" value="true">

Specifies whether the hot key for *Close File* operation is enabled. A value of "true" (default) indicates the key is enabled and "false" indicates it is not.

Parameter:

FileKeySave

<PARAM NAME="fileKeySave" value="false"> ...or...

<PARAM NAME="fileKeySave" value="true">

Specifies whether the hot key for *Save File* operation is enabled. A value of "true" (default) indicates the key is enabled and "false" indicates it is not.

Parameter:

NewWindowKey

<PARAM NAME="newWindowKey" value="false"> ...or...

<PARAM NAME="newWindowKey " value="true">

Specifies whether the hot key for *New Window* operation is enabled. A value of "true" (default) indicates the key is enabled and "false" indicates it is not.

Parameter:

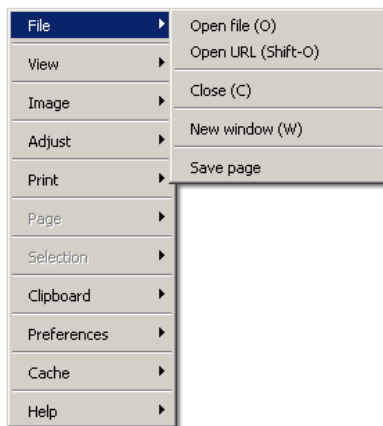
FileMenus

<PARAM NAME="fileMenus" value="false"> ...or...

<PARAM NAME="fileMenus" value="true">

Specifies whether the file pop-up menus are available (using mouse button 2/3). A value of "true" (default) indicates the menus are available and "false" indicates they are not.

The menu is as follows:



Parameter:

FileMenuOpen

<PARAM NAME="fileMenuOpen" value="false"> ...or...

<PARAM NAME="fileMenuOpen" value="true">

Specifies whether the *Open File* menu is available. A value of "true" (default) indicates the menu is available and "false" indicates it is not.

Parameter:

FileMenuClose

<PARAM NAME="fileMenuClose" value="false"> ...or...
<PARAM NAME="fileMenuClose" value="true">

Specifies whether the *Close File* menu is available. A value of "true" (default) indicates the menu is available.

Parameter:

FileMenuSave

<PARAM NAME="fileMenuSave" value="false"> ...or...
<PARAM NAME="fileMenuSave" value="true">

Specifies whether the *Save File* menu is available. A value of "true" (default) indicates the menu is available.

Parameter:

MenuNewWindow

<PARAM NAME="menuNewWindow" value="false"> ...or...
<PARAM NAME="menuNewWindow " value="true">

Specifies whether the *New Window* menu is available. A value of "true" (default) indicates the menu is available.

Parameter:

DefaultSaveFilename

<PARAM NAME ="defaultSaveFilename" value="myFile.tif">

Specifies the file name that appears in the save dialogs file name field every time the save dialog appears. This is a document specific parameter and must be specified for each instance of ViewONE.

Parameter:

ImageSave

<PARAM NAME ="imageSave" value=" http://myserver/save.asp">

This parameter specifies a server side component for saving the image data using a 'get' request.

The server component will only be called during the document saving if the SaveButtonToServer (see page 39) parameter has also been set too "true".

If the webAnnotationWriteMode or localAnnotationWriteMode parameter is set to Wang (see the ViewONE annotations manual), then saving annotations will also cause the image to be saved using the specified server component.

Annotation data is also sent to the specified component. This will not include any annotation data that has been embedded in the image, e.g. when saving as Wang annotations and will be sent separately from the image data. The specified URL will have either "type=IMAGE" or "type=ANNOTATION" appended to it as an HTML parameter to signify if the data is image or annotation data.

Parameter:

ImageSaveServlet

<PARAM NAME ="imageSaveServlet" value="http://myserver/annSave">

This parameter specifies a server side component for saving the image data using a servlet.

The server component will only be called during the document saving if the SaveButtonToServer (see page 39) parameter has also been set too "true".

If the webAnnotationWriteMode or localAnnotationWriteMode parameter is set to wang (see the ViewONE annotations manual), then saving annotations will also cause the image to be saved using the specified server component.

Annotation data is also sent to the specified component. This will not include any annotation data that has been embedded in the image, e.g. when saving as Wang annotations and will be sent separately from the image data. The specified URL will have either "type=IMAGE" or "type=ANNOTATION" appended to it as an HTML parameter to signify if the data is image or annotation data.

Parameter:

ImageSavePost

```
<PARAM NAME ="imageSavePost" value="http://myserver/save.asp">
```

This parameter specifies a server side component for saving the image data using a 'post' request.

The server component will only be called during the document saving if the SaveButtonToServer (see page 39) parameter has also been set to "true".

If the webAnnotationWriteMode or localAnnotationWriteMode parameter is set to wang (see the ViewONE annotations manual), then saving annotations will also cause the image to be saved using the specified server component.

Annotation data is also sent to the specified component. This will not include any annotation data that has been embedded in the image, e.g. when saving as Wang annotations and will be sent separately from the image data. The specified URL will have either "type=IMAGE" or "type=ANNOTATION" appended to it as an HTML parameter to signify if the data is image or annotation data.

Parameter:

SaveButtonToServer

```
<PARAM NAME ="saveButtonToServer" value="true">
```

Sets the image saving function to use the imageSave (see page 38), imageSaveServlet (see page 38) or imageSavePost (See page 39) parameter, otherwise the function will write a local copy of the image using the save dialog.

If this parameter is set to false, and you are writing wang annotations, the save annotations button will still write to the server using the save parameters.

Parameter:

MakeSaveNameSafe

```
<PARAM NAME ="makeSaveNameSafe" value="false">
```

Controls the checking and manipulation of the save file name.

If this parameter is set to false, no checking of the defaultSaveFilename (see page 37) is done and whatever value that is specified is used.

The default for this parameter is true.

Parameter:

Java2FileDialogs

<PARAM NAME ="Java2FileDialogs" value="true">

(Version Standard 3.0.780+, Pro 1.0.780+)

Setting this parameter to true will change the look and feel of the Open File and Save File Dialogs so that when the Java runtime being used is based on Java 2, the Java 2 dialogs will be shown.

The default for this parameter is false.

ViewONE does not use this parameter exclusively to determine whether the Java 2 file dialogs are shown. When the value of this parameter is false and Microsoft IE 7 is being used with a version of the Sun JRE older than 5.0 Update 10, then the Java 2 file dialogs are still shown.

Parameter:

TiffSaveColor

<PARAM NAME ="tiffSaveColor" value="true">

(Version Standard 3.0.824+, Pro 1.0.824+)

Setting this parameter to true change the default behavior so that when documents are saved locally they can be saved as color TIFF images. The default is normally to save as monochrome TIFF images. Note ViewONE will only save color images if the source document is color.

This parameter will only enable the functionality for saving as color TIFF images when using a Java 2. This means that if the Microsoft Java Virtual Machine (see Appendix C) is being used it will not be enabled.

Important note about color TIFF documents

The TIFF standard has often been interpreted different by different viewer and imaging toolkit vendors such that it is possible color TIFFs created by one product may not be visible by another.

This is because the TIFF6 standard was not stringent enough in its specification of how color TIFFs should be written. For that reason TIFF7 was introduced, though very few viewer products support TIFF7 and so even writing color TIFF7 documents is no guarantee that the document will be viewable in all viewing products. ViewONE supports both TIFF7 and attempts to support most color TIFF6 documents!

Parameter:

FixedSavePath

<PARAM NAME ="fixedSavePath" value="\\myserver\ImagePath">

(Version Standard 3.1.48+, Pro 1.1.48+)

This parameter is used to hard code a path that is used as the base part of the path when saving a document, page or selection of pages. When the user attempts to save, instead of the Save File Dialog being displayed, a dialog is displayed for the user to select a file name. If this parameter is not specified then the Save File Dialog is displayed.

The name entered into the dialog cannot include subdirectories. These subdirectories will be ignored.

This save is a client-side "save", so the path must be accessible from the client.

Parameter:

enableDocButtons

(Version Standard/Pro 4.0.14+)

<PARAM NAME="enableDocButtons" value="false">

This parameter, when set to false, will always disable the document buttons displayed in the viewer when using the **doc<n>** parameter.

The default for this parameter is 'true'.

Parameter:

displayDocButtons

(Version Standard/Pro 4.0.14+)

<PARAM NAME="displayDocButtons" value="false">

This parameter, when set to false, will hide the document buttons usually displayed when using the **doc<n>** parameter.

The default for this parameter is 'true'.

Parameter:

saveDocumentWithoutAnnotations

(Version Standard/Pro 4.0.14+)

<PARAM NAME="saveDocumentWithoutAnnotations" value="true">

This parameter, when set to true, will mean that any local save of a loaded image file will save the document WITHOUT the standard associated annotations file (typically save with same filename as image file and .ant extension)

The default for this parameter is 'false'.

Viewing options

Parameter:

ViewButtons

<PARAM NAME="viewButtons" value="false"> ...or...
<PARAM NAME="viewButtons" value="true">

Specifies whether the toolbar includes view buttons. A value of "true" (default) indicates the buttons are visible and "false" indicates they are not.

The view buttons are:

Fullpage, Thumbnails, Two-page, Thumbs-left, Thumbs-bottom, Thumbs-right, Thumbs-top.



Parameter:

ViewButtonsDetail

<PARAM NAME="viewButtonsDetail" value="page, thumbs">

Allows any of the view buttons to be made invisible individually. The presence of the a name in the list (e.g., "thumbs") indicates that the associated button is to be made visible. An absence of a name indicates that the associated button is to be made invisible.

The view button identifiers are:

page, thumbs, two-page, left, bottom, right, top.

Parameter:

PageButtons

<PARAM NAME="pageButtons" value="false"> ...or...
<PARAM NAME="pageButtons" value="true">

Specifies whether the toolbar includes page buttons. A value of "true" (default) indicates the buttons are visible and "false" indicates they are not.

The page buttons are:

First page, previous page, next page, last page and a drag bar for page selection...



Parameter:

ViewKeys

<PARAM NAME="viewKeys" value="false"> ...or...
<PARAM NAME="viewKeys" value="true"> #

Specifies whether the hot keys for view operations are enabled. A value of "true" (default) indicates the keys are enabled and "false" indicates they are not.

The keys are as follows:

View page	F2
View thumbnails	F3
View two page	F4
View thumbnails : Left	F5
View thumbnails : Bottom	F6
View thumbnails : Right	F7
View thumbnails : Top	F8

Parameter:

PageKeys

```
<PARAM NAME="pageKeys" value="false"> ...or...  
<PARAM NAME="pageKeys" value="true">
```

Specifies whether the hot keys for page operations are enabled. A value of "true" (default) indicates the keys are enabled and "false" indicates they are not.

The keys are as follows:

Next page	Page Down
Previous page	Page Up
First page	Home
Last page	End

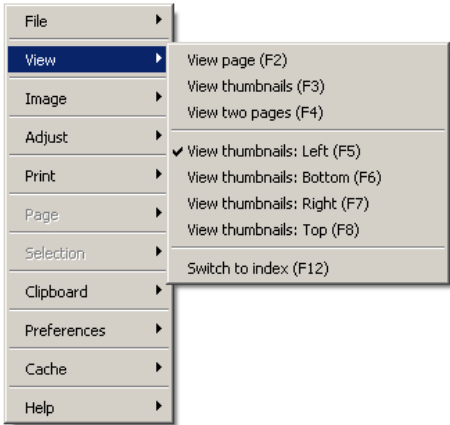
Parameter:

ViewMenus

```
<PARAM NAME="viewMenus" value="false"> ...or...  
<PARAM NAME="viewMenus" value="true">
```

Specifies whether the view pop-up menus are available (using mouse button 2/3). A value of "true" (default) indicates the menus are available and "false" indicates they are not.

The menu is as follows:



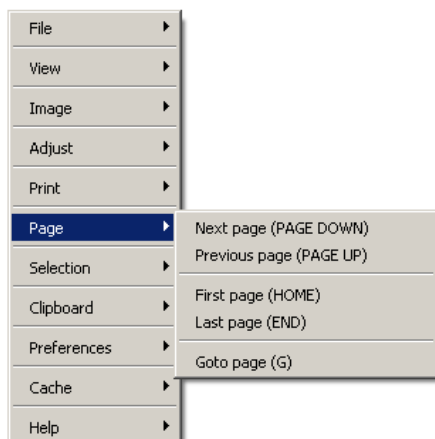
Parameter:

PageMenus

<PARAM NAME="pageMenus" value="false"> ...or...
<PARAM NAME="pageMenus" value="true">

Specifies whether the page pop-up menus are available (using mouse button 2/3). A value of "true" (default) indicates the menus are available and "false" indicates they are not.

The menu is as follows:



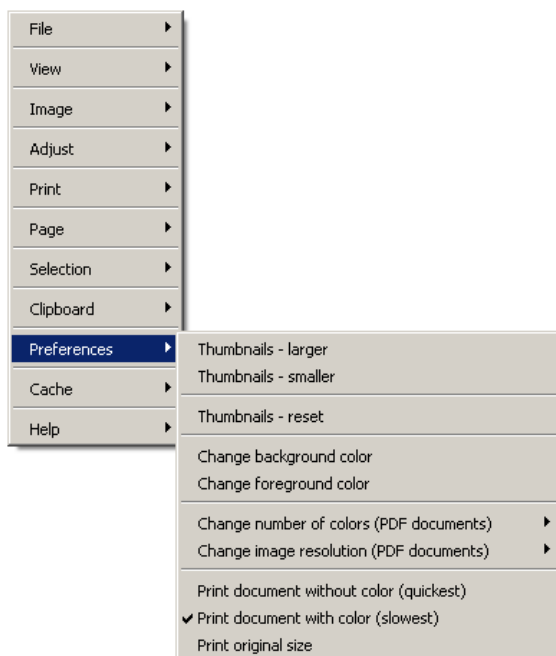
Parameter:

PreferenceMenus

<PARAM NAME="preferenceMenus" value="false"> ...or...
<PARAM NAME="preferenceMenus" value="true">

Specifies whether the preference pop-up menus are available (using mouse button 2/3). A value of "true" (default) indicates the menus are available and "false" indicates they are not.

The menu is as follows:



Parameter:

ViewMode

<PARAM NAME="viewMode" value="fullpage"> (default) ...or...
<PARAM NAME="viewMode" value="thumbsonly"> ...or...
<PARAM NAME="viewMode" value="twopage"> ...or...
<PARAM NAME="viewMode" value="thumbsleft"> ...or...
<PARAM NAME="viewMode" value="thumbsright"> ...or...
<PARAM NAME="viewMode" value="thumbstop"> ...or...
<PARAM NAME="viewMode" value="thumbsbottom">

Specifies the initial view mode when displaying a document. Optional values are:

"fullpage" (default):

The document is opened with the first page visible only.

"thumbsonly":

The document is opened with the thumbnails visible only.

"twopage":

The document is opened with two pages displayed side by side.

"thumbsleft":

The document is opened with thumbnails on the left and the remaining area displaying the first page.

"thumbsright":

The document is opened with thumbnails on the right and the remaining area displaying the first page.

"thumbstop":

The document is opened with thumbnails at the top and the remaining area displaying the first page.

"thumbsbottom":

The document is opened with thumbnails at the bottom and the remaining area displaying the first page.

Parameter:

NWViewMode

```
<PARAM NAME="nwViewMode" value="fullpage"> (default) ...or...  
<PARAM NAME="nwViewMode" value="thumbsonly"> ...or...  
<PARAM NAME="nwViewMode" value="twopage"> ...or...  
<PARAM NAME="nwViewMode" value="thumbsleft"> ...or...  
<PARAM NAME="nwViewMode" value="thumbsright"> ...or...  
<PARAM NAME="nwViewMode" value="thumbstop"> ...or...  
<PARAM NAME="nwViewMode" value="thumbsbottom">
```

Specifies the initial view mode when displaying a document within the New Window feature. Optional values are:

"fullpage" (default):

The document is opened with the first page visible only.

"thumbsonly":

The document is opened with the thumbnails visible only.

"twopage":

The document is opened with two pages displayed side by side.

"thumbsleft":

The document is opened with thumbnails on the left and the remaining area displaying the first page.

"thumbsright":

The document is opened with thumbnails on the right and the remaining area displaying the first page.

"thumbstop":

The document is opened with thumbnails at the top and the remaining area displaying the first page.

"thumbsbottom":

The document is opened with thumbnails at the bottom and the remaining area displaying the first page.

Parameter:

Scrollbars

<PARAM NAME="scrollbars" value="false"> ...or...
<PARAM NAME="scrollbars" value="true">

Specifies whether scrollbars will appear when the image is scaled to a size larger than the display area. A value of "true" (default) indicates scrollbars are required and "false" indicates they are not.

Parameter:

AutoScroll

<PARAM NAME="autoScroll" value="false"> ...or...
<PARAM NAME="autoScroll " value="true">

While selecting an area to zoom, if the mouse is dragged outside the image area then by default the image is scrolled automatically (since version 1.18). This parameter can be used to disable the auto-scroll feature by setting it to "false".

Parameter:

flickScrollEnabled

<PARAM NAME="flickScrollEnabled" value="false"> ...or...
<PARAM NAME="flickScrollEnabled " value="true">

While dragging a page to scroll, release the mouse button before stopping the mouse to flick the page. It will scroll automatically at a rate depending on how quickly you 'flick' the mouse. This parameter can be used to disable the flick-scroll feature by setting it to "false".

Parameter:

DraggingEnabled

<PARAM NAME="draggingEnabled" value="false"> ...or...
<PARAM NAME="draggingEnabled" value="true">

Specifies whether the dragging of the image is permitted or not. Dragging the image to the right pans the image to the right, dragging the image to the left pans the image to the left etc.

A value of "true" (default) indicates dragging is permitted and "false" indicates it is not.

Parameter:

ThumbsWidth

<PARAM NAME="thumbsWidth" value="200">

Specifies the width of thumbnails in pixels. The default value is 120.

Parameter:

ThumbsHeight

<PARAM NAME="thumbsHeight" value="200">

Specifies the height of thumbnails in pixels. The default value is 120.

Parameter:

SynchronizeThumbs

<PARAM NAME="synchronizeThumbs" value="true">

When this parameter is set to true, the thumbnail view will scroll to show the page currently displayed in the image area. The default value is "false".

Parameter:

Zoom, xScroll and yScroll

<PARAM NAME="zoom" value="1.0">

<PARAM NAME="xScroll" value="0">

<PARAM NAME="yScroll" value="100">

All three parameters must be specified for any of them to work. Zoom will set the zoom factor of the displayed image (1.0 = 100% or 1 image pixel = 1 screen pixel, 2.0 = 200% or 1 image pixel = 2 screen pixels). "xScroll" and "yScroll" set the scroll position (in screen pixels) of the image.

Note: These parameters can only be used with "viewMode" set to "fullpage".

Parameter:

ExternalMagnifier

<PARAM NAME="externalMagnifier" value="true">

When this parameter is set to "false", the magnifier window will appear internal to the display area when the user left clicks on the magnifier button.

The default value for this parameter is "false", i.e. the magnifier is an internal window.

Parameter:

MagnifierPersistent

<PARAM NAME="magnifierPersistent" value="true">

When this parameter is set to "true", the magnifier window will be automatically re-instated in its last form (same size, position, magnitude) when a new document is opened.

The default mode is to hide the magnifier window when documents are changed, so the user must manually show it each time. This parameter makes magnifier use quicker for users when they are continually magnifying the same area on images in a set of documents.

The default value for this parameter is "false".

Parameter:

MagnifierFollowMouse

<PARAM NAME="magnifierFollowMouse" value="false">

When this parameter is set to "false", the user must hold the left mouse button to move the magnifier window.

The default value for this parameter is "true", i.e., the magnifier follows the mouse cursor.

Parameter:

DefaultZoomDoc

<PARAM NAME="defaultZoomDoc" value="true">

When this parameter is set to "false" and the magnifier window (external or internal) is visible then the viewer will increase and decrease the magnifier window's size when the user zooms in or out (though buttons, menus or keys).

When this parameter is set to "true" and the magnifier window (external or internal) is visible then the viewer will increase and decrease the document's zoom factor when the user zooms in or out (though buttons, menus or keys).

The default value for this parameter is "false".

Parameter:

NewWindow

<PARAM NAME="newWindow" value="true">

When this parameter is set to "true", ViewONE will startup then open into "new window" mode (just as if the user had hit the new window button).

The default value for this parameter is "false".

Parameter:

KeepScroll

<PARAM NAME="keepScroll" value="true">

If this parameter is set to "true" and providing the pages in a document do not differ by 10% in either the width or height direction, the viewer will maintain the zoom and scroll when changing pages in the document.

The default value for this parameter is "false", meaning the scroll bars centre themselves for each new page.

Parameter:

DisplayColorProgressively

<PARAM NAME="displayColorProgressively" value="false">

If this parameter is set to "false" then the viewer will not display color images as they are processed but rather display it once all processing has completed.

The default value for this parameter is "true".

Parameter:

DisplayMonoProgressively

<PARAM NAME="displayMonochromeProgressively" value="false">

If this parameter is set to "false" then the viewer will not display monochrome images as they are processed but rather display it once all processing has completed.

The default value for this parameter is "true".

Parameter:

docCompare

<PARAM NAME="docCompare" value="true">

If this parameter is set to "true" then an additional "LinkViewer" button is placed in the top left corner of the viewer. Note that this will only have an effect where there is more than one viewer loaded onto the same HTML page. With two or more viewers on the same HTML page and the "LinkViewer" button depressed on each, any transformation taken in either viewer will be reflected in the other.

For example, with the "LinkViewer" buttons enabled, if you rotate the image in the first viewer 90 degrees clockwise, the image in the second viewer will also be rotated clockwise at the same time. This feature can be useful where a user wants to compare two or more documents on-screen at the same time.

Note that it requires the "LinkViewer" button to be depressed on each of the viewers that you want to be linked.

The default value for this parameter is "false".

Parameter:

defaultLinkViewer

`<PARAM NAME="defaultLinkViewer" value="true">`

If the parameter "docCompare" is set to "true" (see above) and where there is more than one viewer on the same HTML page with these settings, then setting this parameter to "true" will mean that by default, the viewers are linked and any transformations in one viewer will be reflected in the other.

The default value for this parameter is "false".

Image options

Parameter:

AdjustOptions

<PARAM NAME="adjustOptions" value="false">

This parameter disables the image adjustment controls and menus. The default is enabled (true).

ViewONE will display a brightness adjustment control for monochrome (1 bit B&W) images, and brightness + contrast + luminance controls for color images. These controls can be made visible as required using one the adjustControlsX parameters described below.

Parameter:

AdjustBars

<PARAM NAME="adjustBars" value="false">

This parameter removes the adjustment bars from the lower toolbar but keeps the menu options available to change image parameters.

Parameter:

AdjustControls1

<PARAM NAME="adjustControls1" value="true, false, false">

This parameter can be used to change which of the adjustment controls and menus are enabled for monochrome (1 bit B&W) images. The three boolean values represent brightness control, contrast control and luminance control. The default value is brightness only.

Parameter:

AdjustControls4

<PARAM NAME="adjustControls4" value="false, false, true ">

This parameter can be used to change which of the adjustment controls and menus are enabled for 4-bit color images (16 color images). The three boolean values represent brightness control, contrast control and luminance control. The default value is luminance only.

Parameter:

AdjustControls8

<PARAM NAME="adjustControls8" value="false, false, true ">

This parameter can be used to change which of the adjustment controls and menus are enabled for 8-bit color images (256 color images). The three boolean values represent brightness control, contrast control and luminance control. The default value is luminance only.

Parameter:

AdjustControls24

<PARAM NAME="adjustControls24" value="true, true, true ">

This parameter can be used to change which of the adjustment controls and menus are enabled for 24-bit color images (16 million color images). The three boolean values represent brightness control, contrast control and luminance control. The default value is luminance + contrast + brightness.

Parameter:

Brightness

<PARAM NAME="brightness" value="65">

This parameter sets the default brightness (all pages) of the display area. The value represents a percentage from 0-100, with 50 being the default value. 0 = minimum brightness (dark) and 100 = maximum brightness (light).

If brightness is set to 0 then the viewer will invoke an effect known as "preserve black", whereby any black pixel on the source image will result in a black pixel on the screen. Without this effect graduated gray pixels may be used (due to anti-aliasing).

Contrast

Parameter:

<PARAM NAME="contrast" value="40">

This parameter sets the default contrast (all pages) of the display area. The value represents a percentage from 0-100, with 50 being the default value. 0 = minimum contrast (flat) and 100 = maximum brightness (not flat!).

Parameter:

Luminance

<PARAM NAME="luminance" value="60">

This parameter sets the default luminance (all pages) of the display area. The value represents a percentage from 0-100, with 50 being the default value. 0 = minimum luminance (dull) and 100 = maximum brightness (bright).

Brightness increases the brightness of all colors (dark and light) uniformly, whereas luminance causes already bright areas of the image to increase in brightness further and darker areas to increase in brightness also, but by a lesser amount. This simulates a light source shining on the image and can be more effective at making color images clearer to read.

Parameter:

persistViewProcessingProperties

<PARAM NAME="persistViewProcessingProperties" value="false">

(Version Standard 3.1.64+, Pro 1.1.64+)

This parameter is used to prevent the brightness, contrast and luminance settings defined by the user being persisted as a preference.

The default value is true.

Parameter:

ImageForeColor

(V3-Only)

<PARAM NAME="ImageForeColor" value="0,0,0">

This parameter sets the default color used for text of monochrome images. The default value is black (0, 0, 0). To change the default, use the RGB color format.

Parameter:

ImageBackColor

(V3-Only)

<PARAM NAME="ImageBackColor" value="255,255,255">

This parameter sets the default color used for the background of monochrome images. The default value is white (255, 255, 255). To change the default, use the RGB color format.

Parameter:

ImageButtons

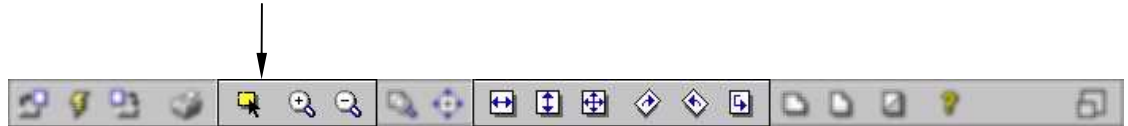
<PARAM NAME="imageButtons" value="false"> ...or...
<PARAM NAME="imageButtons" value="true">

Specifies whether the toolbar includes image buttons. A value of "true" (default) indicates the buttons are visible and "false" indicates they are not.

The image buttons affected by this parameter are:

Zoom area, Zoom in, Zoom out, Fit to width, Fit to height, Best fit, Rotate clockwise, Rotate counterclockwise and Rotate 180. To change these buttons individually see parameter "VisibleImageButtons".

The remaining image buttons can be changed using other parameters, see "MagOptions", "Zoom100Options", "FlipOptions" and "InvertButtons".



If this parameter is set to true (or left to the default value), individual image buttons can be made visible/not visible as required.

The *invert* button can be set using the "InvertButton" parameter. The *flip* buttons can be set using the "FlipOptions" parameter. The *zoom 100%* button can be set using the "Zoom100Options" parameter, and the remaining buttons using the "VisibleImageButtons" parameter below.

Parameter:

VisibleImageButtons

<PARAM NAME="visibleImageButtons" value="true, true, true, true, true, true, true, true, true">

The image buttons are visible by default, but this parameter can be used to set those individual buttons that are not controlled by other parameters.

This parameter must include a list of nine values representing buttons that are visible (true) or invisible (false).

The image buttons affected by this parameter are (in order): Zoom area, Zoom in, Zoom out, Fit to width, Fit to height, Best fit, Rotate clockwise, Rotate counterclockwise, Rotate 180.

Parameter:

InvertButtons

<PARAM NAME="invertButtons" value="false">

This parameter enables separate control over the visibility of the invert button. The default value is "true" and requires the "ImageButtons" parameter to be set true to function properly.

Parameter:

EnhanceButton

<PARAM NAME="enhanceButton" value="true">

Specifies whether the "image enhance" button is displayed. A value of "true" (default) displays the button, and a value of "false" hides it.

Parameter:

EnhanceMenu

<PARAM NAME="enhanceMenu" value="true">

Specifies whether the "image enhance" button is displayed. A value of "true" (default) displays the button, and a value of "false" hides it.

Parameter:

EnableSharpEnhanceModes

<PARAM NAME="enableSharpEnhanceModes" value="false">

(Version Standard 3.1.66+, Pro 1.1.66+)

Specifies whether the Sharp and Sharper enhance modes can be selected.

The default value for this parameter is true.

Parameter:

InfoOptions

(v3-Only)

<PARAM NAME="infoOptions" value="true">

Specifies whether the "image properties" button and menus are displayed. A value of "true" (default) displays the button and menus, and a value of "false" hides them. The default value is true.

Parameter:

InfoOptionsShowSize

<PARAM NAME="infoOptionsShowSize" value="false">

(Version Standard 3.0.716+, Pro 1.0.716+)

When set to false, this parameter turns off the displaying of width and height values in inches or centimeters (within the Image Information Dialog).

The default for this parameter is "True" (displays inches or centimeters depending on the value of next parameter "InfoOptionsShowSizeCm")

Parameter:

InfoOptionsShowSizeCm

<PARAM NAME="infoOptionsShowSize" value="true">

(Version Standard 3.0.716+, Pro 1.0.716+)

When set to true, this parameter switches the display of width and height values from inches to centimeters (within the Image Information Dialog).

The default for this parameter is "False" (display size in pixels inches)

Parameter:

ImageKeys

<PARAM NAME="imageKeys" value="false"> ...or...
<PARAM NAME="imageKeys" value="true">

Specifies whether the hot keys for image operations are enabled. A value of "true" (default) indicates the keys are enabled and "false" indicates they are not.

The keys are as follows:

Fit to window width	F9
Fit to window height	F10
Fit to window	F11
Zoom in	Add
Zoom out	Subtract
Zoom to 100%	Z
Zoom area	A
Rotate clockwise	R
Rotate counterclockwise	L
Enhance	E

Parameter:

VisibleImageKeys

<PARAM NAME="visibleImageKeys" value="true, true, true, true, true, true, true, true">

The image keys are available by default, but this parameter can be used to set those individual keys that are not controlled by other parameters.

This parameter must include a list of eight values representing those keys are available (true) or not available (false).

The image keys affected by this parameter are (in order): Zoom area, Zoom in, Zoom out, Fit to width, Fit to height, Best fit, Rotate clockwise, Rotate counterclockwise.

Parameter:

InvertKeys

<PARAM NAME="invertKeys" value="false"> ...or...
<PARAM NAME="invertKeys" value="true">

Specifies whether the hot key for image invert operation is enabled. A value of "true" (default) indicates the key is enabled and "false" indicates it is not.

The key is as follows:

Invert	I
--------	---

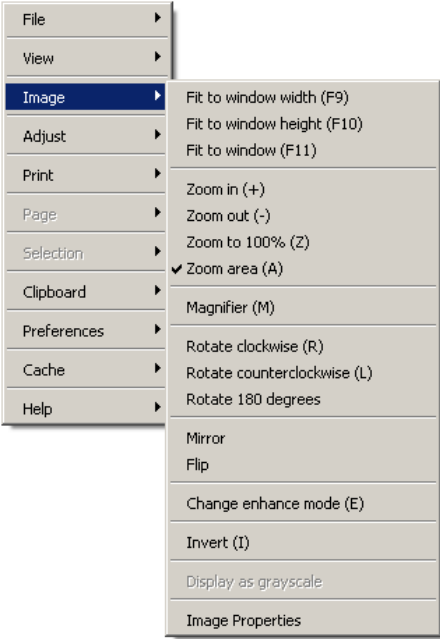
Parameter:

ImageMenus

```
<PARAM NAME="imageMenus" value="false"> ...or...  
<PARAM NAME="imageMenus" value="true">
```

Specifies whether the image pop-up menus are available (using mouse button 2/3). A value of "true" (default) indicates the menus are available and "false" indicates they are not.

The menu is as follows:



If this parameter is set to true (or left to the default value), individual image menus can be made visible/not visible as required.

The *invert* menu can be set using the "InvertMenus" parameter. The *flip* menus can be set using the "FlipOptions" parameter. The *zoom 100%* menu can be set using the "Zoom100Options" parameter, and the remaining menus using the "VisibleImageMenus" parameter below.

Parameter:

VisibleImageMenus

```
<PARAM NAME="visibleImageMenus" value="true, true, true, true, true, true, true, true, true, true">
```

The image menus are visible by default, but this parameter can be used to set those individual menus that are not controlled by other parameters.

This parameter must include a list of nine values representing menus that are visible (true) or invisible (false).

The image menus affected by this parameter are (in order): Zoom area, Zoom in, Zoom out, Fit to width, Fit to height, Best fit, Rotate clockwise, Rotate counterclockwise, Rotate 180, Display as grayscale.

Parameter:

InvertMenus

<PARAM NAME="invertMenus" value="false"> ...or...
<PARAM NAME="invertMenus" value="true">

This option allows separate control over the invert menu.

Note: To see an invert menu the image menus must first be enabled.

Parameter:

FlipOptions

<PARAM NAME="flipOptions" value="true"> ...or...
<PARAM NAME="flipOptions" value="false">

This parameter enables the flip buttons and menu options so the user can flip the visible page both horizontally and/or vertically. The default is disabled (false).

Parameter:

MagOptions

<PARAM NAME="magOptions" value="true"> ...or...
<PARAM NAME="magOptions" value="false">

This parameter disables the magnifier, its keys and the menu option. The default is enabled (true).

The keys are as follows...

Magnifier	M
Increase magnifier size	+
Decrease magnifier size	-
Increase magnifier factor	*
Decrease magnifier factor	/

Parameter:

Zoom100Options

<PARAM NAME="zoom100Options" value="true"> ...or...
<PARAM NAME="zoom100Options" value="false">

This parameter disables the zoom100 button and menu option. The default is enabled ("true").

The key is as follows:

Zoom to 100%	Z
--------------	---

Parameter:

Invert

<PARAM NAME="invert" value="true"> ...or...
<PARAM NAME="invert" value="false">

Specifies whether image colors are inverted by default when pages are displayed. A value of "true" is inverted and "false" (default) is not.

Parameter:

Photometric

<PARAM NAME="photometric" value="false">

(Default value changed: Version Standard 4.0.4+)

Some bilevel (black and white) TIFF image and greyscale TIFF images can have their data stored inverted and then the "Photometric Interpretation" tag with a value of "1" is used to change the change the display of the image so it is appears correctly. The "photometric" html parameter is used to determine whether ViewONE should process the tiff tag in this scenario.

From Version 4.0.4, the default value of this parameter is "true", so that TIFF images with the "Photometric Interpretation" value of "1" have this tiff tag processed. To stop ViewONE from processing this TIFF tag, set the value to "false".

The reason why previously we had set this parameter to "false" by default, was that in the past some TIFF image creation software did not correlate the "Photometric Interpretation" TIFF tag with the image data they created, so the TIFF tag was set to "1" which meant the image data should have its colors reversed, but the image data did not cater for this inversion. In the unlikely case situation where you come across images that have this mismatch between the data and the "Photometric Interpretation" TIFF tag is set to "1", setting this html parameter to "false" may solve the problem.

Parameter:

Enhance

<PARAM NAME="enhance" value="true"> ...or...

<PARAM NAME="enhance" value="false">

Specifies whether a monochrome image is displayed with anti-aliasing on or off. A value of "true" (default) is on and "false" is off.

Parameter:

EnhanceColor

<PARAM NAME="enhanceColor" value="true"> ...or...

<PARAM NAME="enhanceColor" value="false">

Specifies whether a 24-bit color image is displayed with anti-aliasing on or off. A value of "true" (default) is on and "false" is off.

Parameter:

AutoEnhanceBlack

<PARAM NAME="autoEnhanceBlack" value="10">

When ViewONE's enhance mode is set to "auto select" (signified by a "+" in the enhance button icon – the default) ViewONE decides what level of anti-aliasing it should use when displaying images.

When images are reduced significantly so that they can fit on the screen fine detail can be lost. ViewONE compensates for this by switching to its preserve black anti-aliasing mode.

The default point at which it decides to do this is when the image has been reduced by 16 times. This reduction level can be controlled through use of the "autoEnhanceBlack" parameter.

For example, if you wanted ViewONE to display all images with preserve black then you would set the parameter value to "0".

Parameter:

Rotation

<PARAM NAME="rotation" value="90"> ...or...

<PARAM NAME="rotation" value="180"> ...or...

<PARAM NAME="rotation" value="270">

Specifies the angle at which pages are displayed by default. Values of 90, 180, or 270 are accepted. The default is zero.

Parameter:

PageRotation<N>

<PARAM NAME="pageRotation1" value="90">

<PARAM NAME="pageRotation2" value="180">

<PARAM NAME="pageRotation3" value="270">

Specifies the angle at which each page of a multi-page image are displayed by default. Values of 0, 90, 180, or 270 are accepted. The default is zero.

Pages must be contiguous and start from the first page, i.e. you cannot set page 1 and page 3 without setting page 2 but you can set page 1 and page 2 without setting page 3. For example, if you want page 2 in the above example to not be rotated you should use the following:

<PARAM NAME="pageRotation1" value="90">

<PARAM NAME="pageRotation2" value="0">

<PARAM NAME="pageRotation3" value="270">

Parameter:

Flip

<PARAM NAME="flip" value="0"> ...or...
<PARAM NAME="flip" value="1"> ...or...
<PARAM NAME="flip" value="2"> ...or...
<PARAM NAME="flip" value="3">

Specifies the flip mode which pages are displayed in by default. Values of 0 (none), 1 (horizontal or mirror), 2 (vertical) or 3 (both) are accepted. The default is zero.

Parameter:

AllowHeaderTags (rotation)

<PARAM NAME="allowHeaderTags" value="true"> ...or...
<PARAM NAME="allowHeaderTags" value="false">

Version 1.18e introduced additional processing of some TIFF header tags, notably those concerned with image "orientation". There are several standard TIFF header tags that can be used to indicate if the image was rotated when it was saved. If the tag is present, then ViewONE will unrotate the image so that it can be viewed without the user having to use any of the ViewONE rotation buttons/menus.

If you are experiencing rotation of images that clearly should not be rotated, then the likely cause is the TIFF header tag was written in error by the TIFF writer. However, as it is not always convenient to re-write the image without the tag, we have added the option to turn off this additional processing.

By setting "AllowHeaderTags" to "false" then this processing is disabled so that the image will not be rotated automatically by ViewONE.

The default value is "true".

Parameter:

AllowHeaderTagsOnPrint (rotation)

<PARAM NAME="allowHeaderTagsOnPrint" value="false">

(Version Standard 3.1.150+, Pro 1.1.150+)

This parameter is used to override the behavior of the "allowHeaderTags" html parameter when printing. By default, when an image is printed, it will use print using the TIFF header tag settings as defined by the "allowHeaderTags" parameter. Setting this parameter to either "true" or "false" will override that value.

Parameter:

AllowResolutionTags

<PARAM NAME="allowResolutionTags" value="true"> ...or...
<PARAM NAME="allowResolutionTags" value="false">

Specifies whether to process the X and Y resolution header tags found in some TIFF images.

If the parameter value is set to "false" then processing is disabled, and a resolution ratio of 1:1 is assumed by ViewONE. This is useful if images in your library have X and Y resolutions that are written incorrectly in the header.

The default value is "true".

Note: Some images have X and Y resolutions that are intentionally different. If the resolution values are ignored for these images then they will appear with incorrect aspect (stretched or compressed).

Parameter:

Zoom100

<PARAM NAME="zoom100" value="true"> ...or...
<PARAM NAME="zoom100" value="false">

This parameter displays the image at 100% when it is first loaded. The default value is "false".

Parameter:

Scale

<PARAM NAME="scale" value="best"> ...or...
<PARAM NAME="scale" value="ftow"> ...or...
<PARAM NAME="scale" value="ftoh">

Specifies the scaling algorithm to be used when displaying pages. Optional values are:

"best" (default):

The page is scaled to fit into the window area so that all of the page is visible.

"ftow":

The page is scaled so that the width of the page matches the width of the window area. This may result in the visible page height exceeding the available window height in which case a vertical scroll bar appears automatically.

"ftoh":

The page is scaled so that the height of the page matches the height of the window area. This may result in the visible page width exceeding the available window width in which case a horizontal scroll bar appears automatically.

Parameter:

AreaZoom

<PARAM NAME="areaZoom" value="false"> ...or...
<PARAM NAME="areaZoom" value="true">

Specifies the initial mode for the mouse pointer. A value of "false" sets mouse dragging to pan the image. A value of "true" sets mouse dragging to zoom the selected area of the image.

Parameter:

AreaZoomSticky

<PARAM NAME="areaZoomSticky" value="false"> ...or...
<PARAM NAME="areaZoomSticky" value="true">

Specifies whether area zoom mode remains set or returns to dragging after an area has been zoomed. A value of "false" sets dragging after an area zoom. A value of "true" (default) retains the area zooming mode.

Note: If the AreaZoom (see above) is in use and set to "true" then this parameter should not be used.

Parameter:

DefaultTransformDoc (previously DefaultRotateDoc)

<PARAM NAME="defaultTransformDoc" value="false"> ...or...
<PARAM NAME="defaultTransformDoc" value="true">

Specifies the behavior of the rotate, flip and invert buttons, menus and keys. A value of "false" (default) means that the operation will only apply to the current page. A value of "true" means that the operation will apply to all pages in the current document.

(Version Standard 3.0.498+, Pro 1.0.498+)

This parameter also ensures flip and invert buttons and menus also affect all pages.

Parameter:

ThirdPartyFileCache

<PARAM NAME="thirdPartyFileCache" value="false"> ...or...
<PARAM NAME="thirdPartyFileCache" value="true">

When false, disables the auto-file caching during decompression of large JPEG2000 images. If sufficient memory is available then turning this off will result in higher decompression performance but more memory usage. The default value is true.

Printing options

Parameter:

PrintButtons

<PARAM NAME="printButtons" value="false"> ...or...
<PARAM NAME="printButtons" value="true">

Specifies whether the toolbar includes a print button. A value of "true" (default) indicates the button is visible and "false" indicates it is not.



Parameter:

PrintKeys

<PARAM NAME="printKeys" value="false"> ...or...
<PARAM NAME="printKeys" value="true">

Specifies whether the hot keys for print operations are enabled. A value of "true" (default) indicates the keys are enabled and "false" indicates they are not.

The keys are as follows:

Print page	P
Print document	Shift-P
Print page range	Ctrl-P
Print selected pages	Ctrl-Shift-P

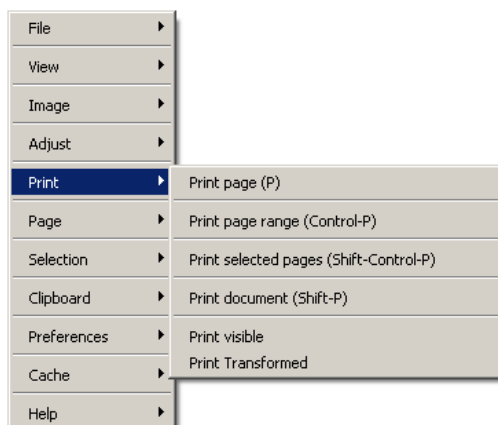
Parameter:

PrintMenus

<PARAM NAME="printMenus" value="false"> ...or...
<PARAM NAME="printMenus" value="true">

Specifies whether the print pop-up menus are available (using mouse button 2/3). A value of "true" (default) indicates the menus are available and "false" indicates they are not.

The menu is as follows:



Parameter:

PrintStickyMenus

<PARAM NAME="printStickyMenus" value="false"> ...or...
<PARAM NAME="printStickyMenus" value="true">

(version Standard 3.0.728+ and Pro 1.0.728+)

When this parameter is set to "false" the "Print Sticky Notes" and "Print Sticky Notes Text" preference menus are hidden. The default value for this parameter is "true".

Parameter:

DefaultPrintDoc

<PARAM NAME="defaultPrintDoc" value="false"> ...or...
<PARAM NAME="defaultPrintDoc" value="true">

When viewing a multi-page document, the print buttons prints the current page on display. However if this parameter is set to "true", it will print all pages. You can always use the pop-up menus to select either anyway (or other print options).

Parameter:

PrintAccelerator

<PARAM NAME="printAccelerator" value="true">

Daeja have developed an advanced print engine (currently available for Windows platforms) which an significantly improve printing. There is no need for pre-installed software or a plugin (as is the case for all other vendor solutions) and it is fully transparent to the user.

This feature is available as a licensed optional extra. This parameter can then be used to turn the feature on/off as needed. The default value for this parameter is "true", and so under normal circumstances there would be little need to use it.

Parameter:

AllowPrintHeader

<PARAM NAME="allowPrintHeader" value="false">

If this parameter is set to false, the print header is disabled and not included on items sent to the printer.

The default value for this parameter is true.

Parameter:

PrintHeader

<PARAM NAME="printHeader" value="any text">

Printouts can include custom text at the top of each page. By default this text is set to the page number followed by the number of pages in the document. The following options are available...

"false" : This value will disable print headers

"any text" : This is the text that will appear at the top of each printed page. For example, it could be your own copyright for the documents being viewed or some other informational text.

"formatted text" : The text can include some limited formatted elements as follows:

\$page : This will print the word "page" in the appropriate translation

\$of : Similarly for the word "of"

\$pages: Similarly for the word "pages"

: This will print the page number of the page being printed

: This will print the number of pages in the document

An example...

```
"$page # $of ##    © Copyright blah 2000"
```

Note 1: The default value is: "(\$page # \$of ##)"

Note 2: Print headers are available for Internet Explorer 4.01+, Netscape 4.06+ and the Java Plugin 1.3+ (the Java Plugin 1.2.2 does not offer sufficient functionality to permit print headers and so they will not be seen if using this version of the plugin).

Note 3: Since ViewONE build 3.0.228, print headers may contain multiple-lines for Print-Accelerator users.

Each line must be separated by either a LF or CR character, or alternatively if you include "<N>" within your text then this will be automatically substituted for a LF character.

Parameter:

PrintJobName

```
<PARAM NAME="printJobName" value="my print job">
```

This parameter sets the print job name sent to the printer when ViewONE prints.

Note: The functionality provided by this parameter is only available when using the print accelerator module for ViewONE or when the Sun Java Plugin v1.2 or later is in use.

Parameter:

PrintDialog

```
<PARAM NAME="printDialog" value="false">
```

This parameter applies only when the print accelerator is used. When this parameter is set to "false", printing will take place without showing the standard print dialog.

The printer ViewONE will use when the print dialog is not shown is determined by the reusePrinter parameter (see below).

The default value for this parameter is "true".

Parameter:

Java2PrintSetupDialog

```
<PARAM NAME="Java2PrintSetupDialog" value="false">
```

This parameter applies only when the print accelerator is not used. When this parameter is set to "false", printing will take place without showing the standard Java 2 print dialog.

The default value for this parameter is "true".

Parameter:

ReusePrinter

<PARAM NAME="reusePrinter" value="false">

This parameter applies only when the printDialog parameter is set to "false" (i.e., not to show) and the print accelerator is in use.

When the reusePrinter parameter is set to "true" and the user has not printed previously, then the users' default printer will be used. When the parameter is set to "true" and the user has printed previously, then ViewONE will use the last printer selected by the user.

When the reusePrinter parameter is set to "false" then the users' default printer will always be used. The default value for this parameter is "true".

Parameter:

Printer

<PARAM NAME="Printer" value="myprinter">

This parameter applies only when the printDialog parameter is set to "false" (i.e., not to show) and the print accelerator is in use.

When the printer parameter is used it must specify a name (or part thereof) for the printer to which all print output will be sent. The named printer becomes ViewONE default printer for the duration that the printer dialog is disabled.

The named printer's default settings will be used for all printouts (e.g. orientation, resolution etc).

Parameter:

MultiPrintNum

<PARAM NAME="multiPrintNum" value="2">

This parameter is only available when used with the print accelerator.

This parameter allows multiple images to be printed on a single printed page of a multi-page document. It allows images to be stacked vertically, and ViewONE will work out automatically whether there is room on an image-by-image basis. The value of this parameter is the maximum number of images you want to be printed on a single page.

The default value for this parameter is "1".

This facility can be particularly useful where images are wide and narrow (e.g. checks or similar).

If you require the specified number of images to **always** be printed on the same page, you can use this parameter in conjunction with the forcePrintsPerPage parameter (see page 88)

Parameter:

MultiPrintGap

<PARAM NAME="multiPrintGap" value="0.5">

This parameter is only available when used with the print accelerator and only when the "MultiPrintNum" parameter is greater than 1.

It allows the vertical gap between images to be set. The value must specify all digits in a value when a decimal value is used (e.g., "0.3", not ".3").

The unit is in inches and the default value is "0.02".

Parameter:

MultiPrintSingleHeader

<PARAM NAME="multiPrintSingleHeader" value="true">

This parameter is only available when used with the print accelerator and only when the multiPrintNum parameter is greater than 1.

Where a print header is defined (see printHeader parameter) and more than one image is printed on a page then the header will ordinarily be printed above each image. If only one header at the top of the printed page is desired, then set this parameter to "true".

The default value for this parameter is "false".

Parameter:

PrintAutoRotate

<PARAM NAME="printAutoRotate" value="true">

This parameter is only available when used with the print accelerator.

When the parameter multiPrintNum is set to more than 1 and this parameter is set to "true", then ViewONE will attempt to rotate images automatically prior to printing so that as many images can be printed (vertically) on a printed page as possible.

When the parameter multiPrintNum is set to 1 and this parameter is set to "true", then ViewONE will attempt to rotate all landscape style images (i.e. images where the image width is greater than the image height).

The default value for this parameter is "false".

Parameter:

PrintWithUserSettings

<PARAM NAME="printWithUserSettings" value="true">

If this parameter is set to "true", then the users current settings are first applied to the image before printing. The settings applied are rotation, flip, invert, brightness, contrast and luminance.

The default value for this parameter is "false".

Note: Monochrome images cannot be made darker when printed, however if the print accelerator is in use then images can be printed with "preserve black" enabled (see the brightness parameter).

Parameter:

PrintDocumentAllowed

<PARAM NAME="printDocumentAllowed" value="false">

If this parameter is set to "false", then the print document menu item will be hidden.

The default value for this parameter is "true".

Parameter:

PrintRangeAllowed

<PARAM NAME="printRangeAllowed" value="false">

If this parameter is set to "false", then the print range key and menu operations are disabled.

The default value for this parameter is "true".

Parameter:

PrintVisibleAllowed

<PARAM NAME="printVisibleAllowed" value="false">

If this parameter is set to "false", then the print visible menu operation is disabled.

The default value for this parameter is "true".

Parameter:

PrintSelectedAllowed

<PARAM NAME="printSelectedAllowed" value="false">

If this parameter is set to "false", then the print selected key and menu operations are disabled.

The default value for this parameter is "true".

Parameter:

PrintComplete

<PARAM NAME="printComplete" value="true">

If this parameter is set to "true", then a "Print Complete" message is displayed to the user after a print job is complete.

The default value for this parameter is "false".

Parameter:

Separator<N>

<PARAM NAME="separator1" value="http://www.myserver.com/separators/sep1.txt">
<PARAM NAME="separator2" value="http://www.myserver.com/separators/sep2.txt">
<PARAM NAME="separator3" value="http://www.myserver.com/separators/sep3.txt">

Separator pages are effectively considered to be a separate document by ViewONE. When ViewONE prints the "actual" document, it interleaves pages from the separator document into the print job.

All the features that are available for normal documents, such as annotations, can also be used with separators. The separator pages can be in any of ViewONE's supported formats, for example, TIFF, BMP, JPG or a simple text file (courier font is assumed). Additionally, the feature can be configured to use a single separator page (for example, one at the head of a print job) or a separator between every page that prints. You can also select which pages have separators associated with them. The latter may be useful when viewing multiple documents as one large one, but where you would want a separator between them when printing.

The separator document is specified through the above "separator<n>" html parameter or the "separatorList" parameter (see page 82). It is possible to specify the location of any file which ViewONE is capable of handling. This also includes any server-side object that streams separator page data to ViewONE.

Examples of the separator<n> parameter are...

Example 1:

```
<param name="page1" value="../docs/mixed/p1.tif">
<param name="page2" value="../docs/mixed/p2.jpg">
<param name="page3" value="../docs/mixed/p3.tif">
<param name="page4" value="../docs/mixed/p4.jpg">
<param name="separator1" value="../docs/separator/sep1.txt">
<param name="separator2" value="../docs/separator/sep2.txt">
<param name="separator3" value="../docs/separator/sep3.txt">
<param name="separator4" value="../docs/separator/sep4.txt">
```

...which would result in the following order in the print job:

```
sep1.txt
p1.tif
sep2.txt
p2.jpg
sep3.txt
p3.tif
sep4.txt
p4.jpg
```

To specify a separator for pages 1 and 4 only, then a dash should be used as the separator<n> parameter value for pages 2 and 3, as follows...

Example 2:

```
<param name="page1" value="../docs/mixed/p1.tif">
<param name="page2" value="../docs/mixed/p2.jpg">
<param name="page3" value="../docs/mixed/p3.tif">
<param name="page4" value="../docs/mixed/p4.jpg">
<param name="separator1" value="../docs/separator/sep1.txt">
<param name="separator2" value="-">
<param name="separator3" value="-">
<param name="separator4" value="../docs/separator/sep4.txt">
```

...which would result in the following order in the print job...

```
sep1.txt
p1.tif
p2.jpg
p3.tif
sep4.txt
p4.jpg
```

To specify a single separator page (at the head of the print job), then the following would be used...

Example 3:

```
<param name="page1" value="../docs/mixed/p1.tif">
<param name="page2" value="../docs/mixed/p2.jpg">
<param name="page3" value="../docs/mixed/p3.tif">
```



```
<param name="page4" value="../docs/mixed/p4.jpg">
<param name="separator1" value="../docs/separator/sep1.txt">
```

...which would result in the following order in the print job:

```
sep1.txt
p1.tif
p2.jpg
p3.tif
p4.jpg
```

The "filename" parameter can be used in place of the "page</>" parameter. It might look something like this...

Example 4:

```
<param name="filename" value="../docs/mixed/fourpagedocument.tif">
<param name="separator1" value="../docs/separator/sep1.txt">
```

...which would result in the same printout as in Example 3.

Note, all separator locations are relative to the codebase, just as they are for normal pages.

If a selective print is requested (print page, print range, print selected, etc. - through the ViewONE right-click menu) then ViewONE will print the separator that corresponds to that page if one has been defined. If that page does not have a separator defined for it then the first page from the separator document will be used as a replacement, i.e. "separator1". This ensures that all print jobs will get a separator page if the "separator1" parameter is defined.

Since the separator pages are treated as a separate document, it is also possible to specify an annotations file to go with that document by using the "separatorAnnotationFile" html parameter. This works in exactly the same way as the "annotationFile" parameter (see ViewONE Annotations Configuration Manual).

If you use text files as separator pages then you can also use special markers within that separator file which get replaced at run-time.

If the text "<FILE>" is found embedded inside the separator text file, then this is substituted with the URL of the page that follows the separator page.

If the text "<PAGE>" is found, it is replaced with the page number of the page that follows the separator page.

If the text "<DESCRIPTION>" is found, it is replaced with the value specified by the "description" html parameter (see page 31).

If you use the "doc<n>" html parameter (see page 19) then the following markers can also be used...

If the text "<DOCINDEX>" is found, it is replaced with index number of the current document.

If the text "<DOCNUM>" is found, it is replaced with total number of documents currently specified.

If the text "<DOCREF>" is found, it is replaced with the value specified by the appropriate "docRef<n>" html parameter (see page 31).

Parameter:

SeparatorList

<PARAM NAME="separatorList" value=" mylist/list.lst">

This parameter specifies a file containing the list of separator pages to be used for printing. It removes the need to specify each separator page for a document using the Separator</N> parameter (see page 79 for details on using separator pages).

This is useful for very large documents because it removes the need to specify each page</N> parameter.

It can also be used to keep the HTML constant, by changing the source list instead of changing the HTML between different documents.

The file is a text file and each entry in the file can be separated by a <CR>, <CR><LF> or <LF> character. The location of the files can be absolute or relative to the code base of the applet, e.g....

File: myseparators.lst contains...

myseparators/sep1.txt
myseparators /sep2.txt
myseparators /sep3.txt

Parameter:

PrintOriginalSizeAllowed

<PARAM NAME="printOriginalSizeAllowed" value="false">

If this parameter is set to "false" then the print original size menu is not visible in the preferences menu.

When the print original size menu item is visible and selected any printouts sent to the printer will be printed the size they are displayed rather than being scaled to fit the printer page.

If the page being printed is too large to fit on the printer page and it is being printed at its original size a message will be displayed in the printed pages header warning of this. The message to be displayed can be controlled using the "imageTooLargePrintHeader" parameter (see page)

The default value for this parameter is "true".

Note: The print original size functionality is only available when using the print accelerator module for ViewONE

Parameter:

PrintOriginalSizeOverride

<PARAM NAME="printOriginalSizeOverride" value="false">

This parameter forces the print original size menu setting in the preferences menu to the specified value and causes the menu item to remain in this state by graying out the menu.

If this parameter is set to "true" then all printouts sent to the printer will be printed using the print original size functionality. If this parameter is set to "false" then all printouts will be scaled to fit the printer page.

If this parameter is not included then print original size menu item functions as normal.

Note: The print original size functionality is only available when using the print accelerator module for ViewONE.

Parameter:

ImageTooLargePrintHeader

<PARAM NAME="imageTooLargePrintHeader" value="your message">

This parameter overrides the default print header message that is displayed when an image is being printed using print original size and the image being printed is larger than the printer page.

For a more detailed description of the print original size functionality see the "printOriginalSizeAllowed" parameter on page 83.

Note: The print original size functionality is only available when using the print accelerator module for ViewONE

Parameter:

PrintMono

<PARAM NAME="printMono" value="true">

This parameter sets the default behavior of the print accelerator for monochrome printing.

If this parameter is not used, then the user is prompted when they print their first document if they would like to print in color or monochrome.

If the parameter is set to true, documents will be printed in monochrome by default and the "print document without color" will be set to true by default.

The print menus will be reset to the value specified each time ViewONE is used.

Note: The print monochrome functionality is only available when using the print accelerator module for ViewONE.

Parameter:

PrintMonoAllowed

<PARAM NAME ="printMonoAllowed" value="false">

When set to false, this parameter disables the ability to select monochrome or color printing in ViewONE. All color images will be printed in color.

The default value for this parameter is true.

Note: The print monochrome functionality is only available when using the print accelerator module for ViewONE.

Parameter:

PrintAcceleratorForgetSettings

<PARAM NAME="printAcceleratorForgetSettings" value="true">

If this parameter is set to "true", then the Print Accelerator will not remember printer settings between prints. If, for example, a user sets a print to landscape mode in one print job then it will be back in portrait mode the next time the user comes to print in that viewer session.

The default value for this parameter is "false".

Parameter:

PrintAcceleratorReverseMono

<PARAM NAME="printAcceleratorReverseMono" value="true">

If this parameter is set to "true", then the Print Accelerator will invert the image at the last moment before printing. If, for example, a user print a document that has a white background and a black foreground then the print output will be inverted so that it has a black background and a white foreground.

The default value for this parameter is "false".

Parameter:

PrintingFontSelectionEnabled

<PARAM NAME="printingFontSelectionEnabled" value="true">

If this parameter is set to "true", then the Print Accelerator will use the font specified by the "printingFontName" (see page 86), "printingFontSize" (see page 87) and "printingFontBold" (see page 88) HTML parameters when printing the print header and footer (page label).

The available fonts that can be used are detailed in appendix X.

The default value for this parameter is "false".

Parameter:

PrintingFontName

<PARAM NAME="printingFontName" value="Courier">

The parameter specifies the font to be used to print the headers and footers when printing using the Print Accelerator.

The available fonts that can be used are detailed in Appendix B, on page 123.

This parameter is used in conjunction with the "printingFontSize" (see page 87) and "printingFontBold" (see page 88) parameters.

This parameter will only have an effect if the "printingFontSelectionEnabled" parameter is set to true.

The default value for this parameter is "Arial".

Parameter:

PrintingFontSize

<PARAM NAME="printingFontSize" value="15">

The parameter specifies the font size to be used to print the headers and footers when printing using the Print Accelerator.

The available fonts that can be used are detailed in Appendix B, on page 123.

This parameter is used in conjunction with the "printingFontBold" (see page 88) and "printingFontName" (see page 86) parameters.

This parameter will only have an effect if the "printingFontSelectionEnabled" parameter is set to true.

The default value for this parameter is 10.

Parameter:

PrintingFontBold

<PARAM NAME="printingFontBold" value="true">

The parameter specifies whether a bold font should be used to print the headers and footers when printing using the Print Accelerator.

The available fonts that can be used are detailed in Appendix B, on page 123.

This parameter is used in conjunction with the "printingFontSize" (see page 87) and "printingFontName" (see page 86) parameters.

This parameter will only have an effect if the "printingFontSelectionEnabled" parameter is set to true.

The default value for this parameter is "false".

Parameter:

ForcePrintsPerPage

<PARAM NAME="forcePrintsPerPage" value="true">

If this parameter is set to "true", then the Print Accelerator will always print the number of images specified by the multiPrintNum parameter (see page 76) on the same page.

The printed page is split up into the number of images, so each image with its header and footer (page label) is given the same amount of page. If the image is too large to be printed in its given space using the full width of the page, the image will be shrunk to fit into the available space, maintaining the aspect ratio.

If the multiPrintNum parameter is not used or is set to 1, this parameter will have no effect.

The default value for this parameter is "false".

Parameter:

PrintingColorHeader

<PARAM NAME="printingColorHeader" value="true">

(Version Standard 3.0.332+, Pro 1.0.332+)

If this parameter is set to "true", then the Print Accelerator will always print color headers and footers. This will be slower than printing monochrome headers and footers.

Parameter:

DisablePrintCopies

<PARAM NAME="disablePrintCopies" value="true">

(Version Standard 3.0.338+, Pro 1.0.338+)

If this parameter is set to "true", then the Print Accelerator will ignore the value set in the print dialog for number of copies and only ever print a single copy.

The default value for this parameter is "false".

Graphics

BackColor

Parameter:

<PARAM NAME="backColor" value="192,192,192">

Specifies the background color for the applet. The value represents the red, green and blue intensities, in that order (RGB).

This color is used for the background of buttons, toolbars, scrollbars, panels etc. This parameter may be useful to help integrate ViewONE into a Web page that does not necessarily suite the system default color.

Parameter:

ActiveColor

<PARAM NAME="activeColor" value="223, 223, 223">

Specifies the background color for active scrollbars and thumbnails. The value represents the red, green and blue intensities, in that order (RGB).

Parameter:

ActiveButtons

<PARAM NAME="activeButtons" value="false">

Version 2.1 introduced active buttons. These are buttons and scrollbars that highlight as the mouse is moved over them. This functionality can be disabled by setting this parameter to "false". The default value is "true".

Parameter:

HighlightColor

<PARAM NAME="highlightColor" value="252, 145, 66">

Specifies the color for the zoom area highlight. The value represents the red, green and blue intensities, in that order (RGB). If the text "none" is used instead of an RGB value then the zoom area highlight will not be colored (i.e., it will be completely transparent).

The default value is "255, 255, 0" (yellow).

Parameter:

ToolTips

<PARAM NAME="toolTips" value="false">

When set to "false" this disables tool-tips.

Parameter:

ToolTipsBackground

<PARAM NAME="toolTipsBackground" value="0,0,192">

This parameter can be used to change the background color of the tool-tips. The value represents standard RGB format (red, green, blue) in the range 0-255.

Parameter:

ToolTipsForeground

<PARAM NAME="toolTipsForeground" value="255,255,255">

This parameter can be used to change the foreground color of the tool-tips (text and border). The value represents standard RGB format (red, green, blue) in the range 0-255.

Parameter:

ToolTipsMaxLength

<PARAM NAME="toolTipsMaxLength" value="64">

This parameter limits the size of tooltips (default value is set to 256 characters). This will help prevent large tooltips (such as those associated with Stick Notes) from miss-drawing or occupying too much screen real estate.

Parameter:

RetrievalTextDelay

<PARAM NAME="retrievalTextDelay" value="2000">

This parameter specifies the time (in milliseconds) that ViewONE waits until displaying the retrieval text. If the image is retrieved within this time, no message will be displayed. The default value is 500 milliseconds.

Note that if the value of this parameter is set to zero then the message will always be displayed.

Note also that this parameter will only take effect if the "extraRetrievalMessage" parameter is set to "false" (default is "true")

Parameter:

ImageDecodeTextDelay

<PARAM NAME="imageDecodeTextDelay" value="2000">

This parameter specifies the time (in milliseconds) that ViewONE waits until displaying text for lengthy image decode operations. If the image is decoded within this time, no message will be displayed. The default value is 500 milliseconds.

Parameter:

ShowHotKeys

<PARAM NAME="showHotKeys" value="false">

This parameter controls the display of the menu hotkey text on ViewONE's menus. When the parameter is set to "false", the hotkey text is not present when ViewONE's menus are displayed.

The default value for this parameter is "true".

Parameter:

StatusBar

<PARAM NAME="statusBar" value="false"> ...or...
<PARAM NAME="statusBar" value="true">

Specifies whether the status bar is visible or not. A value of "true" (default) indicates the status bar is visible and "false" indicates it is not.

Parameter:

ProgressBar

(V3-Only)

<PARAM NAME="progressBar" value="false"> ...or...
<PARAM NAME="progressBar" value="true">

Specifies whether the (version 3) progress bar is visible or not. A value of "true" (default) indicates the progress bar is visible and "false" indicates it is not.

Parameter:

ExtraRetrievalMessages

(V3-Only)

<PARAM NAME="extraRetrievalMessages" value="false"> ...or...
<PARAM NAME="extraRetrievalMessages" value="true">

(Version Standard 3.0.384+, Pro 1.0.384+)

Specifies whether the viewer displayed additional progress messages when connecting and retrieving files from a server. The default value is 'true'.

Parameter:

SplitBarAllowed

(V3-Only)

<PARAM NAME="splitbarAllowed" value="false">

When this parameter is set to false, then the split-bar (used to separate thumbnails from the main viewing area) is disabled (so that the user will not be able change the width of the thumbnails pane).

The default value for this parameter is "true".

Parameter:

ImageToolbarCollapsed

(V3-Only)

<PARAM NAME="imageToolbarCollapsed" value="true">

This parameter overrides the user preference for the default state of the top image toolbar. When this parameter is set to true, the toolbar always starts in a collapsed (folded) state.

The default value for this parameter is "false".

Parameter:

ViewToolbarCollapsed

(V3-Only):

<PARAM NAME="viewToolbarCollapsed" value="true">

This parameter overrides the user preference for the default state of the bottom view toolbar. When this parameter is set to true, the toolbar always starts in a collapsed (folded) state.

The default value for this parameter is "false".

Parameter:

ToolbarExpandAllowed

(V3-Only):

<PARAM NAME="toolbarExpandAllowed" value="false">

This parameter disabled the collapse-and-expand feature for Version 3 toolbars.

The default value for this parameter is "true".

Parameter:

ToolbarExpandDelay

(V3-Only):

<PARAM NAME="toolbarExpandDelay" value="1000">

This parameter is used to change the default delay when auto-expanding a toolbar.

A toolbar is auto-expanded if it is first collapsed (by the user clicking on the collapse button) and then the mouse is hovered over the toolbar in a collapsed state. The parameter specifies the number of milliseconds for the delay before ViewONE auto-expands the toolbar.

The default value for this parameter is "300" milliseconds (i.e. 1/3rd second).

Note: Auto-expand is not available for Macintosh users due to problems with the Apple Macintosh Java rendering, but collapsing and expanding is available using the expand/collapse buttons as usual.

Parameter:

ToolbarCollapseDelay

(V3-Only):

<PARAM NAME="toolbarCollapseDelay" value="2000">

This parameter is used to change the default delay when auto-collapsing a toolbar (following an auto-expand). The parameter specifies the number of milliseconds for the delay.

The default value for this parameter is "1000" milliseconds (i.e. 1 second).

Note: Auto-collapse is not available for Macintosh users due to problems with the Apple Macintosh Java rendering, but collapsing and expanding is available using the expand/collapse buttons as usual.

Custom toolbar buttons

Parameter:

Bar<N>Button<N>

```
<PARAM NAME="bar1button1" value="script1(), help1, enabled1.jpg, disabled1.jpg, true">
<PARAM NAME="bar2button1" value="script2(), help2, enabled2.jpg, disabled2.jpg, true">
```

***since Version 4.0.38:** This functionality was extended to include Bar3 (annotations toolbar) and Bar4 (annotations context sensitive toolbar)

```
<PARAM NAME="bar3button1" value="script1(), help1, enabled1.jpg, disabled1.jpg, true, eval1()">
<PARAM NAME="bar4button1" value="script2(), help2, enabled2.jpg, disabled2.jpg, true, eval2()">
```

This parameter allows you to specify custom buttons to be inserted into any of the top, bottom, annotations or context sensitive toolbars which are when used initiate calls to JavaScript methods embedded in your HTML page.

For this parameter to function correctly you must use the MAYSCRIPT property in your applet tag.

Buttons are added to the left of the toolbar.

The parameter value is a comma-delimited sequence of strings as follows...

script<N>(): This is the name of any JavaScript function that you want ViewONE to call when the user clicks on the button. You can include one parameter in this script name (e.g. script1(1234)). *Please note that the script name must be in lower case.*

help1: This is the help text used in the button tooltip and status bar text.

enabled1.jpg: This is the filename for the image seen when the button is enabled. This file must exist in the location indicated by your codebase parameter and the image must measure 22 by 19 pixels (see sample file button1.jpg).

disabled1.jpg: This is the filename for the image seen when the button is disabled. This file must exist in the location indicated by your codebase parameter and the image must measure 22 by 19 pixel (see sample file button2.jpg).

true/false: When this parameter is set to True, the button is enabled all the time. When it is set to false, the button is enabled only when a document is open.

***since Version 4.0.38:** This functionality was extended to allow for an optional additional script to be used to evaluate the button state as follows:

script<N>(): This is the name of any additional JavaScript function that you want ViewONE to call when the user clicks on the button. You can include one

parameter in this script name (e.g. script1(1234)). *Please note that the script name must be in lower case.*

The function should return a bitmasked value that will be used control the display state of the button itself as follows:

Return Value	Visible	Depressed	Enabled
0	No	No	No
1	Yes	No	No
2	No	Yes	No
3	Yes	Yes	No
4	No	No	Yes
5	Yes	No	Yes
6	No	Yes	Yes
7	Yes	Yes	Yes

Please note: Unlike the rest of the comma limited sequence (all of which is mandatory), this last function is optional and can be left off entirely if you prefer.

Please note: Button images may be JPEGs or GIFs and may have transparent areas. We advise any area of the image that you wish to be the background is set to transparent so that ViewONE can display them a matching background to the rest of the viewer.

Parameter:

CustomResource<N>

<PARAM NAME="customResource1" value="mybuttonimages.zip">

This parameter allows you to supply multiple image files for custom buttons within a single resource file.

By using this parameter, and ensuring all images use for custom buttons are included within a single resource file, you will ensure optimum start performance (because ViewONE does not then need to perform multiple retrievals from the server).

Parameter:

Theme

(Version Standard/Pro 4.0.2+)

<PARAM NAME="theme" value="classic">

This parameter is used to define the look (UI) of ViewONE. There are currently 2 themes available, "modern" and "classic".

The "modern" theme represent the new look that has been created for Version 4 of ViewONE. It has a new color scheme and a new set of buttons images. This is the default theme.

The "classic" theme represents the look that ViewONE had before Version 4.

Local Cache Path

Parameter:

CachePath

<PARAM NAME="cachePath" value="c:/mycache">

This parameter is recognized only on Microsoft Windows Platforms. It can be used to set a specific folder for ViewONE cache. The default value is the designated Windows temporary folder as defined by the Windows environment variable or if this are is inaccessible, the default becomes the working folder of the JVM being used to run ViewONE.

Note: You must use a forward-slash for directory separators (i.e., "/", not "\").

Parameter:

UseWindowsTempPath

<PARAM NAME="useWindowsTempPath" value="false">

(Version Standard 3.0.346+, Pro 1.0.346+)

This parameter, like the "cachePath" html parameters is only recognized on Microsoft Windows Platforms. When the "cachePath" html parameter has not been specified, the Windows "temp" and "tmp" environment variables are used to determine where the ViewONE cache is located. The values for these environment variables are determined by calling the Windows command shell programs.

When this parameter is set to "false", ViewONE will not use the windows environment variables "temp" and "tmp" to choose where to put its file cache and will not call the Windows Command Shell. Instead it will use the Java directed location (usually under Documents and Setting).

In some locked down environments, there are security policies in place to prevent the Windows Command Shell being invoked from an Internet Browser. Although ViewONE will still work if it is prevented from running the Windows Command Shell, in this situation this html parameter can be used to stop ViewONE from attempting to run the Windows Command Shell.

The default for this parameter is "true".

Miscellaneous

Parameter:

AllButtons

<PARAM NAME="allButtons" value="false"> ...or...
<PARAM NAME="allButtons" value="true">

Specifies whether all buttons are visible or not. A value of "true" (default) indicates the buttons are visible and "false" indicates they are not.

Parameter:

AllKeys

<PARAM NAME="allKeys" value="false"> ...or...
<PARAM NAME="allKeys" value="true">

Specifies whether the all hot keys are enabled or not. A value of "true" (default) indicates the keys are enabled and "false" indicates they are not.

Note: The parameter excludes keys used for "magOptions" and "flipOptions". To disable keys for these options, you need to set their options parameter to "false".

Parameter:

AllMenus

<PARAM NAME="allMenus" value="false"> ...or...
<PARAM NAME="allMenus" value="true">

Specifies whether the all pop-up menus are available. A value of "true" (default) indicates the menus are available and "false" indicates they are not.

Note: The help menu will still appear.

Parameter:

ClipOptions

<PARAM NAME="ClipOptions" value="true"> ...or...
<PARAM NAME="ClipOptions" value="false">

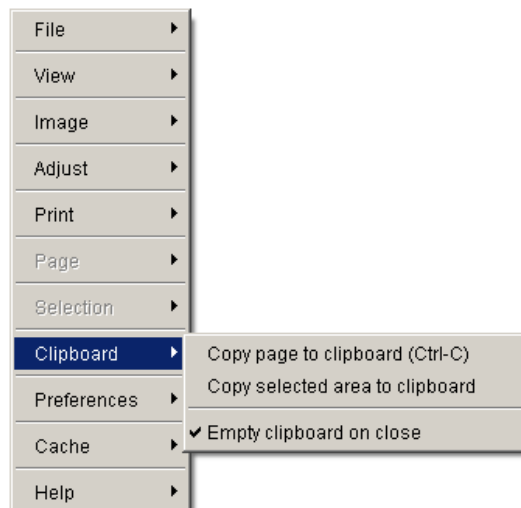
This parameter disables the clipboard menu and keyboard options. The default is enabled ("true").

Note: For versions of ViewONE prior to Version 3, clipboard options are available for print accelerator users only. From Version 3 onward, that restriction has been relaxed.

The key is as follows:

Copy page to clipboard Ctrl-C

The menu is as follows:



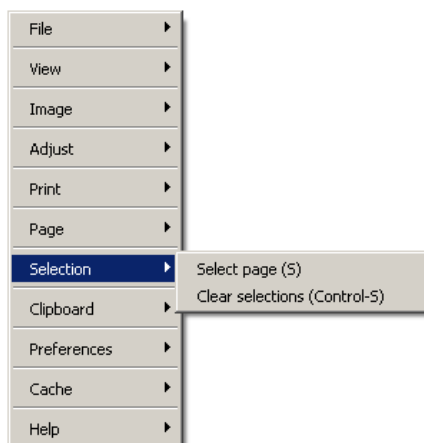
Parameter:

SelectMenus

<PARAM NAME="selectMenus" value="false"> ...or...
<PARAM NAME="selectMenus" value="true">

Specifies whether the select pop-up menus are available (using mouse button 2/3). A value of "true" (default) indicates the menus are available and "false" indicates they are not.

The menu is as follows:



Parameter:

SelectKeys

<PARAM NAME="selectKeys" value="false"> ...or...
<PARAM NAME="selectKeys" value="true">

Specifies whether the hot keys for page selections are enabled. A value of "true" (default) indicates the keys are enabled and "false" indicates they are not.

The keys are as follows:

Select page	S
Clear Selections	Shift-S

Parameter:

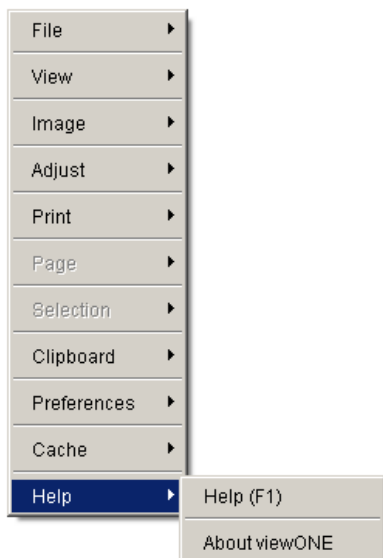
HelpMenus

<PARAM NAME="helpMenus" value="false"> ...or...
<PARAM NAME="helpMenus" value="true">

This parameter only comes into effect if the license you are using has the Daeja Image Systems copyright message removed.

It specifies whether the help pop-up menus are available (using mouse button 2/3). A value of "true" (default) indicates the menus are available and "false" indicates they are not.

The menu is as follows:



Parameter:

HelpURL

<PARAM NAME="helpURL" value="http://www.daeja.com/help.html">

This parameter is used to specify an absolute or relative URL to a web page with help documentation.

When the parameter is specified a help button and help menu item become available. The help menu item is made available within the "help" menu. Clicking on the button or menu will activate the URL. If no URL is specified then neither the button or menu item appears.

The parameter can be used with the "helpTarget" parameter to specify how the URL is opened.



Parameter:

HelpTarget

<PARAM NAME="helpTarget" value="_blank">

This optional parameter is for use with the "helpURL" parameter. It specifies to ViewONE how it should open the help documentation URL. The different values for this parameter and their effects are as follows...

<i>Value</i>	<i>Description</i>
<code>_blank</code>	Open in a new browser window (default).
<code>_self</code>	Open in the same window/frame that contains ViewONE.
<code>_top</code>	Open in the top-level frame of the window that contains ViewONE (this will be the same as " <code>_self</code> " if frames are not used).
<code>_parent</code>	Open in the parent of the frame that ViewONE is in (this will be the same as " <code>_self</code> " if frames are not used).
<code>Name</code>	Open in the named window. If a window with this name does not exist then a top-level window will be created with this name.

Parameter:**RouteDocs**

<PARAM NAME="routeDocs" value="true">

When this parameter is set to true ViewONE will attempt to route viewing of unsupported image files to the browser. So, for example, if the "filename" parameter points to a Microsoft Word document, then ViewONE will allow the browser to handle viewing directly using Microsoft Word. The default value for this parameter is false.

Parameter:**RouteTarget**

<PARAM NAME="routeTarget" value="_blank">

This optional parameter is for use with the "routeDocs" parameter. It specifies to ViewONE how it should redirect images back to the browser when they have unsupported formats. The different values for this parameter and their effects are as follows...

<i>Value</i>	<i>Description</i>
<code>_blank</code>	Redirect to a new browser window.
<code>_self</code>	Redirect to the same window/frame that contains ViewONE (default).
<code>_top</code>	Redirect to the top-level frame of the window that contains ViewONE (this will be the same as " <code>_self</code> " if frames are not used).
<code>_parent</code>	Redirect to the parent of the frame that ViewONE is in (this will be the same as " <code>_self</code> " if frames are not used).
<i>Name</i>	Redirect to the named window. If a window with this name does not exist then a top-level window will be created with this name.

Parameter:**RouteHTML**

<PARAM NAME="routeHTML" value="true">

This parameter controls how ViewONE deals with HTML responses from the server. When the parameter is set to true, any HTML responses from the server are displayed in a separate browser window, rather than inside ViewONE as an image.

The default for this parameter is false.

Note: When set to true, this parameter prevents auto-login popups from working properly. For example, if a user enters a username and password into ViewONE when retrieving an image.

Parameter:**RouteHTMLTarget**

(Version Standard 3.1.166+, Pro 1.0.166+)

<PARAM NAME="routeHTMLTarget" value="_blank">

This optional parameter is for use with the "routeHTML" parameter. It specifies to ViewONE how it should redirect HTML responses from the server. Please see the html parameter **RouteTarget** for the supported values for this parameter.

Parameter:

RouteXML

(Version Standard/Pro 4.0.14+)

<PARAM NAME="routeXML" value="true">

This parameter controls how ViewONE deals with XML responses from the server. When the parameter is set to true, any XML responses from the server are displayed in a separate browser window, rather than inside ViewONE as an image but this can be adjusted through use of the RouteXMLTarget" parameter described below.

The default for this parameter is false.

Parameter:

RouteXMLTarget

(Version Standard/Pro 4.0.14+)

<PARAM NAME="routeXMLTarget" value="_blank">

This optional parameter is for use with the "routeXML" parameter. It specifies to ViewONE how it should redirect XML responses from the server. Please see the html parameter **RouteTarget** for the supported values for this parameter.

Parameter:

RedirectNotFound

<PARAM NAME="redirectNotFound" value="http://myserver/docs/retrievalerror.htm">

When this parameter is set and there is a problem retrieving the first page of a document the viewer will redirect the page to the URL specified.

The default for this parameter is false.

Parameter:

RedirectTarget

<PARAM NAME="redirectTarget" value="_blank">

This parameter is for use with the "redirectNotFound" parameter. It specifies to ViewONE how it should redirect the browser when there is a document retrieval problem. The different values for this parameter and their effects are as follows...

<i>Value</i>	<i>Description</i>
<code>_blank</code>	Redirect to a new browser window.
<code>_self</code>	Redirect to the same window/frame that contains ViewONE (default).
<code>_top</code>	Redirect to the top-level frame of the window that contains ViewONE (this will be the same as " <code>_self</code> " if frames are not used).
<code>_parent</code>	Redirect to the parent of the frame that ViewONE is in (this will be the same as " <code>_self</code> " if frames are not used).
<i>Name</i>	Redirect to the named window. If a window with this name does not exist then a top-level window will be created with this name.

Parameter:

TimeOut

`<PARAM NAME="timeOut" value="30">`

This parameter sets and starts a usage timer. If the user does not use the applet for the number of seconds specified then the applet will automatically be disabled. It can be re-enabled only by calling one of the timeout JavaScript methods or by revisiting the page containing the applet (Netscape) or reloading the page (Internet Explorer).

Parameter:

EventHandler

`<PARAM NAME="eventHandler" value="myEventHandler">`

Version 1.18 introduced the concept of JavaScript and server side event logging. This is a mechanism by which it is possible to use JavaScript or a server side object to monitor user activity and other selected actions performed by the ViewONE applet. The event handling is enabled using this parameter or the ServerEventHandler parameter.

The parameter must be set to the function name of the JavaScript method that you want calling to handle the events.

See the JavaScript manual for information about the specific events that can be monitored and the structure of the JavaScript event handler function.

Parameter:

EventHandlerJson

<PARAM NAME="eventHandlerJson" value="myEventHandler">

This parameter extends the standard [EventHandler](#) to allow a server side process to return a JSON object which contains a map of parameters that can be parsed and additional action taken depending on what is required.

The parameter must be set to the function name of the JavaScript method that you want calling to handle the events.

Parameter:

ServerEventHandler

<PARAM NAME="serverEventHandler" value="http://myserver.com/eventScript.pl?">

Version 1.18 introduces the concept of JavaScript and server side event logging. This is a mechanism by which it is possible to use JavaScript or a server side object to monitor user activity and other selected actions performed by the ViewONE applet. The event handling is enabled using this parameter or the EventHandler parameter.

If you want a server side script/object/exe to receive notification of events as they occur, then set the parameter to the URL path representing that object. In the above example it is a Perl script. ViewONE will tag the following text onto the end of the value specified...

Id=n&description=description+of+event

Where "n" is a number representing the event and description contains additional textual data (usually page number but it depends on the event id). See the JavaScript manual for information about the specific events that can be monitored.

Note, that "spaces" in the description are automatically replaced by the "+" symbol. It is up to your script to substitute the "+" back to a space. This is a typical method for sending "spaces" to server side objects since "spaces" cannot be use in any valid URL.

If you are interested in obtaining an example PERL script (for handling events in this way), please view our download page, then select "server event handler" (www.daeja.com/support/servlets1.asp).

Parameter:

ServerEventInterest

(Version Standard/Pro 4.0.14+)

<PARAM NAME="serverEventInterest" value="5,22">

This parameter is used with the "ServerEventHandler" to filter which events that ViewONE generates get sent to the server event logger. The list of available events to log is the same as the one defined by the client side event handler. It is described in the Javascript manual.

By default, if the "ServerEventHandler" parameter is specified, then all events generated are sent to the server event logger.

Parameter:

ServerFileMonitor

<PARAM NAME="serverFileMonitor" value="http://myserver.com/fileMonitor.pl?">

This parameter permits a server side object to monitor user file-saves and file-prints.

If you want a server side script/object/exe to receive notification of how many save or print operations the user has performed on a document, set this parameter to the URL path representing that object. In the above example it is a Perl script. ViewONE will tag the following text onto the end of the value specified...

save=n&print=n

Where "n" is a number representing the total number of operations performed.

The monitor URL is called when a document is closed, this includes when a user changes web pages (from a page containing ViewONE).

Parameter:

InitialFocus

<PARAM NAME="initialFocus" value="false">

When this parameter is set to "false" the applet will not attempt to obtain focus when it is first initialized. The default value is "true".

Parameter:

FocusBorder

<PARAM NAME="focusBorder" value="false">

ViewONE applets have a border which illustrates when the applet has keyboard focus. This parameter allows the focus border to be removed.

Parameter:

SaveExtension

<PARAM NAME="saveExtension" value="tif">

When this parameter is included, then files saved using the save button/menu will always have this extension.

Parameter:

EmptyOnClose

<PARAM NAME="emptyOnClose" value="true">

When this parameter is set to "true", ViewONE will clear its cache when a document is closed. This will force ViewONE to reload a document from the server if a document is closed then re-opened. This parameter would be useful where images are likely to be modified on the server while users are viewing them.

The default value is "false".

Parameter:

Obfuscate

<PARAM NAME="obfuscate" value="true">

When this parameter is set to "true", ViewONE uses a non-disclosed file format for storing cached image files thus preventing users viewing or copying them directly. This parameter may be useful where access to images is a particularly sensitive issue or users are charged for image viewing/printing.

Please note when using the ViewONE Pro Universal Viewing Module, it cannot deal with the cached file format used when the "obfuscate" parameter is set to "true". Please see the "obfuscateUV" parameter in the ViewONE Pro manual on how to deal with the Universal Viewing Module and the "obfuscate" parameter.

The default value is "false".

Parameter:

ThumbDbIClickSelect

<PARAM NAME="thumbDbIClickSelect" value="true">

When this parameter is set to "true", double-clicking on a thumbnail will cause that page to be marked as 'selected' rather than viewing that page in "fullpage" mode.

This parameter has been deprecated as of Standard Version 3.1.130 and Pro Version 1.1.130. Parameter "thumbDbClick" with a value "Select" should now be used instead. This parameter will continue to work.

Parameter:

ThumbDbClick

(Version Standard 3.1.130+, Pro 1.1.130+)

<PARAM NAME="thumbDbClick" value="Select">

This parameter is used to define the behavior when a user double-clicks on a thumbnail. It has three possible values, "FullPage" (the default value), "Select" and "NewWindow". By default when a user double-clicks on a thumbnail, that page gets displayed as a single full page. Specifying a value of "Select" will cause the page to be marked as "selected". Specifying a value of "NewWindow" will cause a new window to be displayed with that page.

Parameter:

TraceNet

<PARAM NAME="traceNet" value="true">

When this parameter is set to "true", ViewONE will output a trace to the Java Console to display URL retrieval progress. To see this trace you will need to enable the Java Console (if you have not already done so) and have it visible while viewing images.

The default value for this parameter is "false".

Note: The trace should only be used if you are having problems with retrieval performance, for example if you are experiencing particularly slow networking, because it will degrade performance itself as a result of having to output the trace (note: some Java Consoles perform better than others).

Parameter:

RenderSupport

<PARAM NAME="renderSupport" value="true">

When this parameter is set to "true", ViewONE will attempt to use more system resources to improve performance. The areas of the viewer affected are scrolling, dragging, zooming and printing.

The default value for this parameter is "false".

Note: This parameter should only be set to true for use with Internet Explorer.

Parameter:

EmptyClipboardOnClose

<PARAM NAME="emptyClipboardOnClose" value="true">

When this parameter is defined the user preference in the clipboard menu for emptying the clipboard when a document is closed is disabled and overridden with the value specified by this parameter.

When the parameter is set to "true", the clipboard is always emptied when the document is closed. When the parameter is set to "false", the clipboard is never emptied.

If this parameter is not defined, the user can choose which option to take by using the menu item in the clipboard menu.

Parameter:

UseErrorFiles

<PARAM NAME="useErrorFiles" value="true">

ViewONE build 3.0.144 replaced the error files (openError.txt and notFound.txt) with auto-translated error messages. However if you wish to revert back to using the error files (so that you can customize these messages yourself) then use this parameter with the value set to True.

The default value for this parameter is False.

Parameter:

KeepAlive

<PARAM NAME="KeepAlive" value="myurl.asp">

or

<PARAM NAME="KeepAlive" value="javascript::mytext">

Since build 238, ViewONE has included a keep-alive feature. In some environments, it may be necessary to have regular network activity in order to keep network connections open.

This feature means that while ViewONE is in use, it can issue regular requests to either a URL (by issuing a HTTP:GET request to the specified URL) or it can generate a Javascript event (with the chosen text) to the specified event handler. If the JavaScript event is chosen then an event with ID 41 will be generated (see ViewONE JavaScript manual).

In each case the timing between keep alive actions is set by the KeepAliveTime parameter (see below).

Parameter:

KeepAliveTime

<PARAM NAME="KeepAliveTime" value="30">

This parameter specifies the time for keep alive actions (specified by the above KeepAlive parameter). The time is in seconds.

Parameter:

SystemInfoShortcutEnabled

<PARAM NAME="SystemInfoShortcutEnabled" value="false">

This parameter disables the system information shortcut key (SHIFT and Y) when set to false.

The Default for this parameter is 'true'.

Parameter:

HtmlListShortcutEnabled

<PARAM NAME="htmlListShortcutEnabled" value="false">

This parameter, when set to 'false', disables the HTML list shortcut key (SHIFT and T).

The default for this parameter is 'true'.

Parameter:

MouseRightButtonEnabled

<PARAM NAME="mouseRightButtonEnabled" value="false">

This parameter, when set to 'false', disables right-mouse button functionality for viewer buttons.

The default for this parameter is 'true'.

Parameter:

DisableShutdownDialogs

(Version Standard 3.0.530+, Pro 1.0.530+)

<PARAM NAME="disableShutdownDialogs" value="true">

This parameter, when set to 'true', will prevent any dialogs from being shown to the user after the main browser window has been closed. An example of such a dialog is the dialog which informs the user of an annotation save failure.

The default for this parameter is 'false'.

Parameter:

abortSaveOnShutdown

(Version Standard 3.1.54+, Pro 1.1.54+)

<PARAM NAME="abortSaveOnShutdown" value="false">

This parameter, when set to false, will block the closure of the ViewONE applet until any existing save operation has finished. When not set to false, the save process will abort as soon as the applet is closed down.

The default for this parameter is 'true'.

Parameter:

cacheMenus

(Version Standard 3.1.38+, Pro 1.1.38+)

<PARAM NAME="CacheMenus" value="false">

Setting this parameter to "false" removes the "Cache" submenu of options from the preference menu.

The default for this parameter is "true".

Parameter:

tiffSaveColor

<PARAM NAME="tiffSaveColor" value="true">

By default, where an image is saved from the viewer to a tif file, it will be in Tiff Group 4 compression (monochrome) format.

Where this parameter is set to "true" then all TIFF files will be output in the LZW compressed format which supports color. They will ***always*** be output in the LZW format even if there is no color present in the image/annotations.

The default for this parameter is "false"

Changing and logging image retrieval error messages

Version 1.18 introduced the option to modify the error message seen by users when an image fails to be retrieved and to log these errors on your server.

Typical reasons for an image file failing to load are...

- the specified file does not exist on the server
- a mistake in the URL used to specify that file
- there has been a failure in the communications link between the applet and the server

ViewONE attempts to inform the user of the cause of the message, but sometimes it is not possible to know the precise cause. For example, a mistake in the URL or the file not existing on the server usually leads to the same "File not found" error. Some mistake in the URL can lead to an "IOException" error with no useful explanation. Unfortunately this is a general fault in Java but in most cases there is a useful message that should be recorded and first referred back to your system administrator who will contact your supplier or Daeja (as appropriate) for assistance.

To aid in user co-operation, which is often needed in tracing retrieval errors, you can now change the error message to suit your particular environment. You may for example, make specific recommendations to the user on a particular course of action.

You can instead, also configure ViewONE to display a "default" image when such problems occur. Again, using that image to provide the user with particular instructions as required.

Configuring retrieval error messages

Provided the "useErrorFiles" HTML parameter is set to "True", when retrieval errors occur ViewONE will first look for a text file that contains the error text. It will look for this file in the location specified by the "CODEBASE" parameter described in the installation instructions at the beginning of this document.

For "file not found" errors it will look for a file named "notfound.txt"

For all other retrieval errors it will look for a file name "openerror.txt"

If the relevant file is found then the text contained in that file will be used in place of the standard error message.

If a text file is not found ViewONE will then look for an image file in the same location...

For "file-not-found" errors it will look for a file named "notfound.tif"

For all other retrieval errors it will look for a file name "openerror.tif"

Similarly, if found, ViewONE will display the image rather than the standard error message.

If neither a text nor an image file is found then the standard error message will be displayed.

Text file options

The text file (notfound.txt or openererror.txt) can contain any amount of text with lines separated by the typical <CR> or <CRLF> character sequences. TAB characters will be handled but all other characters will be displayed as-is and using a fixed format (usually courier).

You may include in the text file any of the following optional identifiers...

If you include <FILE> anywhere in the text, then it will get replaced by the actual file (or URL) which failed to load.

If you include <ERROR> anywhere in the text, then it will get replaced by the standard error message.

If you include <DOCINDEX> anywhere in the text, then it will be replaced by the document index.

If you include <DOCNUM> anywhere in the text, then it will be replaced by the total number of documents. For example, you may wish to include "<DOCINDEX> of <DOCNUM>" to identify the document index.

If you include <DOCREF> anywhere in the text, then it will be replaced by the document reference value, as defined by the "docRef<#>" parameter (see page 31).

Example text files are included in the "v1files" directory with each demo.

The following HTML parameter can be used with the error text files to provide for additional identifiers...

errorText<N>

e.g.

```
<param name="errortext1" value="<testtag1>this is tag1">
<param name="errortext2" value="<testtag2>this is tag2">
```

This parameter allows additional identifiers to be added to the text file. The part of the value specified within the < and > characters forms the new identifier in the text file. The second part of the value specifies the text that is to appear in place of the identifier inside the text file.

When an error occurs and the text file is used, the identifiers are stripped out of the text and replaced with the text specified in the second part of the parameter's value.

Image file options

The image file (notfound.tif or openererror.tif) can contain any of the supported TIF image formats described at the beginning of this document. An image file may be used to provide a "more elegant" error message, perhaps with your logo or other accompanying picture. However, image files cannot include specifics about the particular error because there is not the flexibility otherwise associated with text files, which allows replacement of text with error details.

If you choose to use an image file then you may find the error-logging feature described below particularly useful.

Logging retrieval errors

Version 1.18 provides the ability to use a server side object (CGI, ASP, EXE etc) to log retrieval errors.

This facility may be useful particularly where there are perhaps a number of known problems with an image database but perhaps no specific knowledge of which images are missing or which specifically incorrectly specified. Such problems are not uncommon with large databases.

Using this option, it is now entirely up to you how you deal with these problems. You may for example keep a log from which to produce daily/weekly reports, or perhaps send an email or page an administrator.

The following HTML parameter can be specified...

serviceNotFound

e.g.

```
<PARAM NAME="serviceNotFound"
value="http://myserver/scripts/notfound.cgi?file=<FILE>&error=<ERROR>">
```

Uses for these parameters

Both parameters permit inclusion of <FILE> and <ERROR> as for text files and you can also add any number of additional details that are suitable for your system (e.g. user id, database, etc). Only <FILE> and <ERROR> will be replaced by ViewONE with the appropriate details. All other details must be specified complete.

The "value" of the parameter actually specifies an HTTP:GET command which is issued by ViewONE when a retrieval error occurs. You can therefore specify any server side object you like. In our example we are using CGI scripts `notfound.cgi` and `openerror.cgi`.

When issuing the HTTP:GET commands, ViewONE will replace all spaces found in the string with a "+" to prevent the typical errors this can lead to when dealing with HTTP:GET commands. This is standard practice with most systems and it is up to the server side object to substitute all "+" characters with a space to obtain the original string.

APPENDIX A: Sample Server-side ‘Save’ Object

i) ASP/VBScript example

```
<%@ Language=VBScript %>
<% option explicit %>

<%

    Dim objFile
    Dim objSaveFile
    Dim strFilename
    Dim strFilePath
    Dim strSavePath
    Dim strDecoded
    Dim strPostData
    Dim varBinaryData
    Dim lngBinLength
    Dim intIndex
    Dim strType
    Dim intNumData
    Dim strDataString
    Dim intCount
    Dim dataSize
    Dim bufferSize
    Dim totalRead
    Dim BinaryStream
    Const adTypeBinary = 1
    Const adSaveCreateOverWrite = 2

    intIndex = 0
    bufferSize = 64000

    strType = Request.QueryString("type")
    Response.Write "type:" & strType

    If strType = "ANNOTATION" Then
        strFilename = "test.ant"
    Else
        strFilename = "test.tif"
    End If

    Response.Write vbLf & strFilename

    strFilePath = "." & strFilename

    strSavePath = Server.MapPath(strFilePath)
    strDecoded = ""

    dataSize = Request.TotalBytes
    Response.Write vbLf & "size:" & dataSize

    If dataSize > 0 Then

        Set objFile = Server.CreateObject("Scripting.FileSystemObject")
        Set objSaveFile = objFile.CreateTextFile(strSavePath, true)

        If strType = "ANNOTATION" Then
            intNumData = 1
        Else
            If dataSize <= bufferSize Then
                intNumData = 1
            Else
                intNumData = (Request.TotalBytes \ bufferSize) + 1
            End If
        End If

        Response.Write vbLf & "count:" & intNumData

        For intCount = 1 to intNumData
```



```

        Response.Write vbLf & intCount

        varBinaryData = Request.BinaryRead(bufferSize)
        strPostData = BinToText(varBinaryData, bufferSize)

        If strType = "ANNOTATION" Then
            strDecoded = URLDecode(strPostData)
        Else
            strDecoded = strPostData
        End If

        objSaveFile.Write(strDecoded)

        totalRead = totalRead + bufferSize

        If (totalRead + bufferSize > dataSize) Then
            bufferSize = dataSize - totalRead
        End If
        Next

        objSaveFile.Close
        Set objSaveFile = Nothing
        Set objFile = Nothing

        Response.Write vbLf & "<OK>"

    Else
        Response.Write vbLf & "<FAILED>"
    End If

'*****
'** Function to convert binary to text      **
'*****

Function BinToText(varBinData, lngDataSizeInBytes) '** as String

    Const adFldLong = &H00000080
    Const adVarChar = 200 '** Indicates a string value.

    Dim objRS

    Set objRS = Server.CreateObject("ADODB.Recordset")

    objRS.Fields.Append "txt", adVarChar, lngDataSizeInBytes, adFldLong
    objRS.Open

    objRS.AddNew
    objRS.Fields("txt").AppendChunk varBinData
    BinToText = objRS("txt").Value

    objRS.Close
    Set objRS = Nothing

End Function

'*****
'** Function to decode URL encoded string  **
'*****

Function URLDecode(Expression)

    Dim strSource
    Dim strTemp
    Dim strResult
    Dim lngPos

    strTemp = ""
    strResult = ""
    lngPos = 0

    strSource = Replace(Expression, "+", " ")

```

```

For lngPos = 1 To Len(strSource)
    strTemp = Mid(strSource, lngPos, 1)
    If strTemp = "%" Then
        If lngPos + 2 < Len(strSource) Then
            strResult = strResult & Chr(CInt("&H" & Mid(strSource, lngPos + 1, 2)))
            lngPos = lngPos + 2
        End If
    Else
        strResult = strResult & strTemp
    End If
Next

URLDecode = strResult

End Function

%>

```

APPENDIX B: ViewONE available fonts

Name	Plain	Bold	Italic	Bold & Italic
Courier	√	√	x	x
Arial	√	√	x	x
Serif	√	x	x	x
SansSerif	√	x	x	x
Tahoma	√	x	x	x

APPENDIX C: Deprecated Microsoft JVM

(Version Standard 3.1.200+, Pro 1.1.200+)

The Microsoft JVM has been deprecated by Microsoft themselves for sometime now as per this statement from the Microsoft website:

"The MSJVM reached the end of its life as of June 30, 2009. Customers are encouraged to take proactive measures to stay informed about obsolete software and move away from the MSJVM in a timely fashion. The MSJVM is no longer available for distribution from Microsoft and there will be no enhancements to the MSJVM. Microsoft products and SKUs currently including the MSJVM have been retired or replaced by versions not containing the MSJVM."

The Daeja viewer has continued to support use of this JVM until version 3.1.200\1.1.200 of the viewer released in May 2011 and you should be aware that this version of the viewer represents the last supported version of the viewer that will work with the Microsoft JVM – any attempt to use a later version of the viewer will result in a banner explaining that the platform is no longer supported so if you have a specific reason for needing to use the Microsoft JVM (typically legacy software) then you must ensure you are using version 3.1.200\1.1.200 of the viewer or earlier.

This step is part of an overall move away from needing to support the Java 1 environment and allows Daeja to make significant improvements in areas of the viewer currently hampered by the necessity of supporting these deprecated JVM's which are in reality, never used by customers any more.

So please note that the following configuration options for the viewer are specific to use of the MS JVM and/or other Java 1 JVM's:

Declaration of .cab files

Typically most installations of the viewer include a separate location for the "ji.cab" or "viewone.cab" files but in fact these CAB files are only required where the viewer encounters the MS JVM so if you are using a version of the viewer later than 3.1.200\1.1.200 you should remove any reference to these files from your HTML source code.

Java1NTBackgroundPrinting

<PARAM NAME="java1NTBackgroundPrinting" value="false">

If this parameter is set to "false" and ViewONE detects the client operating system to be NT and the JVM to be either the Microsoft JVM or Java1 JVM, the printing of an image is no longer done as a background task and the user interface is disabled while the printing is taking place. This parameter is used to fix an NT operating system problem which causes an error to occur in ViewONE during printing using some HP print drivers.

The default value for this parameter is "true".

Pre-Loader

ViewONE Pro introduced the Advanced Cache Manager (ACM) – see previous section for details. The ACM as a whole is however only available for ViewONE pro users, but a minor part the ACM (known as the pre-loader) has also been incorporated into ViewONE Standard.

The pre-loader feature allows the users Internet Explorer (IE) browser cache to be pre-loaded with ViewONE Standard prior to its actual use so that the user is not burdened by the browser download (without a progress bar) at viewing time. A good time to pre-load would be at logon time for the user (before viewing images).

Pre-loading is only necessary for ViewONE Standard since Standard does not have a way to provide a progress bar to the user (whereas ViewONE Pro does).

However this feature is only able to pre-load ViewONE Standard into IE's cache when the user is using Microsoft's Java (the MS Virtual Machine). When using Sun's java (the JRE), pre-loading is ineffective since the JRE blocks any attempts at populating its cache.

Despite the limitation to IE, Daeja recommends using the pre-loader, since it is designed to auto-detect when the Sun JRE is being used and if it is it will automatically skip the pre-load.

This mechanism allows you therefore to use the pre-loader for all users and so removing the burden from you of knowing which users are using which Java engine but adding a benefit for those that use IE and Microsoft's Java.

To use the pre-loader, a specific set of HTML parameters with specific values must be used.

For that reason we have provided the parameters and settings as a whole (rather than individually describing each one), as follows...

Example Preloader HTML...

Note: replace "...enter your web page after preloading..." with a web page that you wish to the user to ViewONE once the pre-loading has completed (see our pre-load demo at www.daeja.com/demo/v1step1.asp then click on the link for the ViewONE Standard demo)

```
<APPLET CODEBASE = "."  
ARCHIVE = "ViewONE.jar"  
CODE = "start.jiViewONE.class"  
NAME = "ViewONEpreloader"  
WIDTH = "100%"  
HEIGHT = "97%"  
HSPACE = "0"  
VSPACE = "0"  
ALIGN = "middle">
```

```
<param name="ACMRemovelfDifferent" value="true">  
<param name="ACMPreloadStandard" value="true">  
<param name="ACMPreloadFile" value="ji">  
<param name="ACMredirect" value="http://...enter your web page after preloading...">  
<param name="ACMredirectTarget" value="_self">  
<param name="backColor" value="255,255,255">  
</APPLET>
```