

**FSM Task Guide Migration Tasks**

**Note**

Before using this information and the product it supports, read the information in “Notices” at the end of this document.

This edition applies to version 4.0.1.6 of IBM FileNet System Monitor (product number 5724-R91) and to all subsequent releases and modifications until otherwise indicated in new editions.

**Copyright © 2000-2010 CENIT AG, Germany; Copyright © 2005, 2010 IBM Corp., USA**  
US Government Users Restricted Rights – Use, duplication or disclosure restricted by GSA ADP Schedule Contract with IBM Corp.

# Table of Contents

<b>Preface</b> .....	<b>3</b>
About this document.....	3
<b>Working with the Task Execution Manager</b> .....	<b>5</b>
Starting the Task Execution Manager (CalaTEMa).....	5
The CalaTEMa main screen.....	6
Creating custom tasks.....	9
Editing custom tasks.....	15
Removing custom tasks.....	16
<b>Migration Tasks</b> .....	<b>17</b>
Import Events from 4.0x System.....	17
Update CalaRex.....	19
Update and Install CALA.....	21
<b>Copyright notice</b> .....	<b>24</b>
IBM FileNet System Monitor (12 March 2011) .....	24

# Preface

## About this document

### *Who should read this guide?*

The target audience for this guide are those who install or maintain FSM environments.

Every effort has been made to provide you with complete installation instructions. If information becomes available after the creation of the installation media from which you accessed this guide, we will provide an updated version of the guide on the IBM/FileNet Customer Service and Support web site (<http://www.ibm.com/support>). As a general rule, you should refer to the IBM web site to obtain the current version of this guide.

This guide provides instructions for installing and/or upgrading IBM FileNet System Monitor, and identifies the IBM/FileNet and 3rd Party products that are certified for the current release. Be aware that each release of IBM FileNet System Monitor may have multiple Interims Fixes, or Fix Packs available for installation, each with potentially different dependencies and installation requirements. Therefore, before you attempt to install or upgrade IBM FileNet System Monitor, review the list of releases and their associated dependencies on the IBM Support web site (<http://www.ibm.com/support>).

### *Before you start*

Users of the guide should have knowledge about Unix and/or Microsoft Windows® operating system, web servers, database systems and middleware platforms. The configuration of managed systems (clients) requires advanced knowledge of all IBM ECM systems that should be monitored.

If you lack the requisite skill sets it is strongly recommended to have IBM Lab Services or a certified ValueNet Partner install this product.

### *Where you find this guide*

You can find this documentation on the FSM installation media in the following folder:

UNIX: `<Mount point>/INSTALL/docs`

Windows: `<Drive letter>:\INSTALL\docs`

## ***Feedback on documentation***

Send your comments by e-mail to [comments@us.ibm.com](mailto:comments@us.ibm.com). Be sure to include the name of the product, the version number of the product, and the name and part number of the book (if applicable). If you are commenting on specific text, include the location of the text (for example, a chapter and section title, a table number, a page number, or a help topic title).

## Working with the Task Execution Manager

### Starting the Task Execution Manager (CalaTEMa)

The Task Execution Manager needs a Java 1.4 runtime environment to be installed. On Microsoft Windows, Java Web Start must also be installed. A JRE 1.4 including Java Web Start for Windows is available on the **Download** page on the FSM web interface.

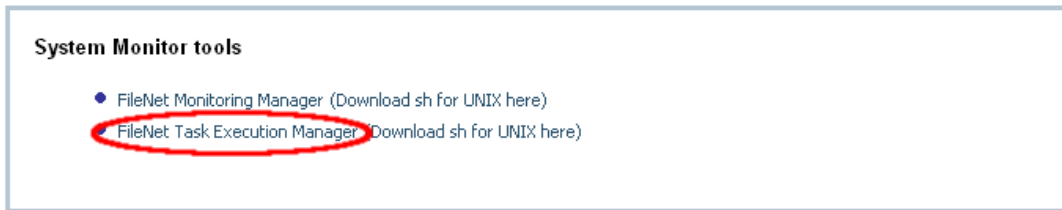
CalaTEMa is started via the FSM web interface. Start your browser and enter `http://ServerName` in its address line (replace `ServerName` with the ip address or hostname of your FSM server).

Log in to the console and choose the **Tools** link in the frame on the left.

When the **Tools** page is displayed, choose the appropriate **Task Execution Manager** link.

---

#### Tools



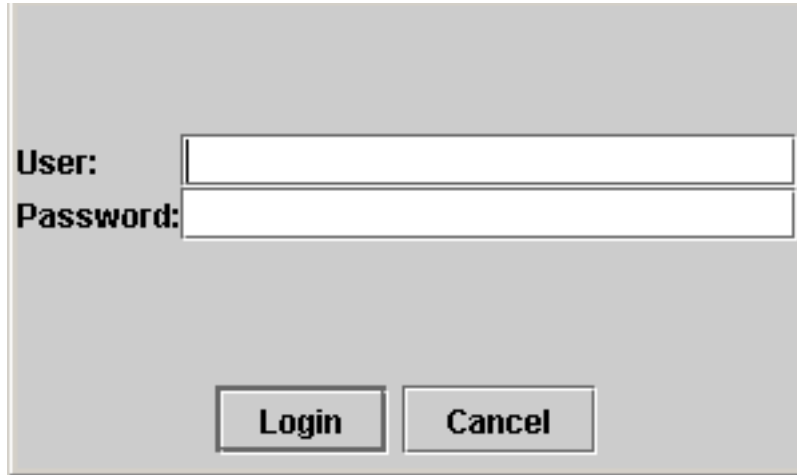
Launch Task Execution Manager

There are two different start methods. If Java Web Start is installed (this is mandatory on Microsoft Windows), choose the Java Web Start link. If the server detects an installed Java Web Start on the client, this is the only link which is shown.

On Unix systems without Java Web Start, the .sh file can be downloaded and started. It uses the OpenJNLP to start the application. The link to the shell script only appears, if Java Web Start is not installed.

## The CalaTEMa main screen

Before the Task Execution Manager starts, a login window for the `cala_rex` server is shown:



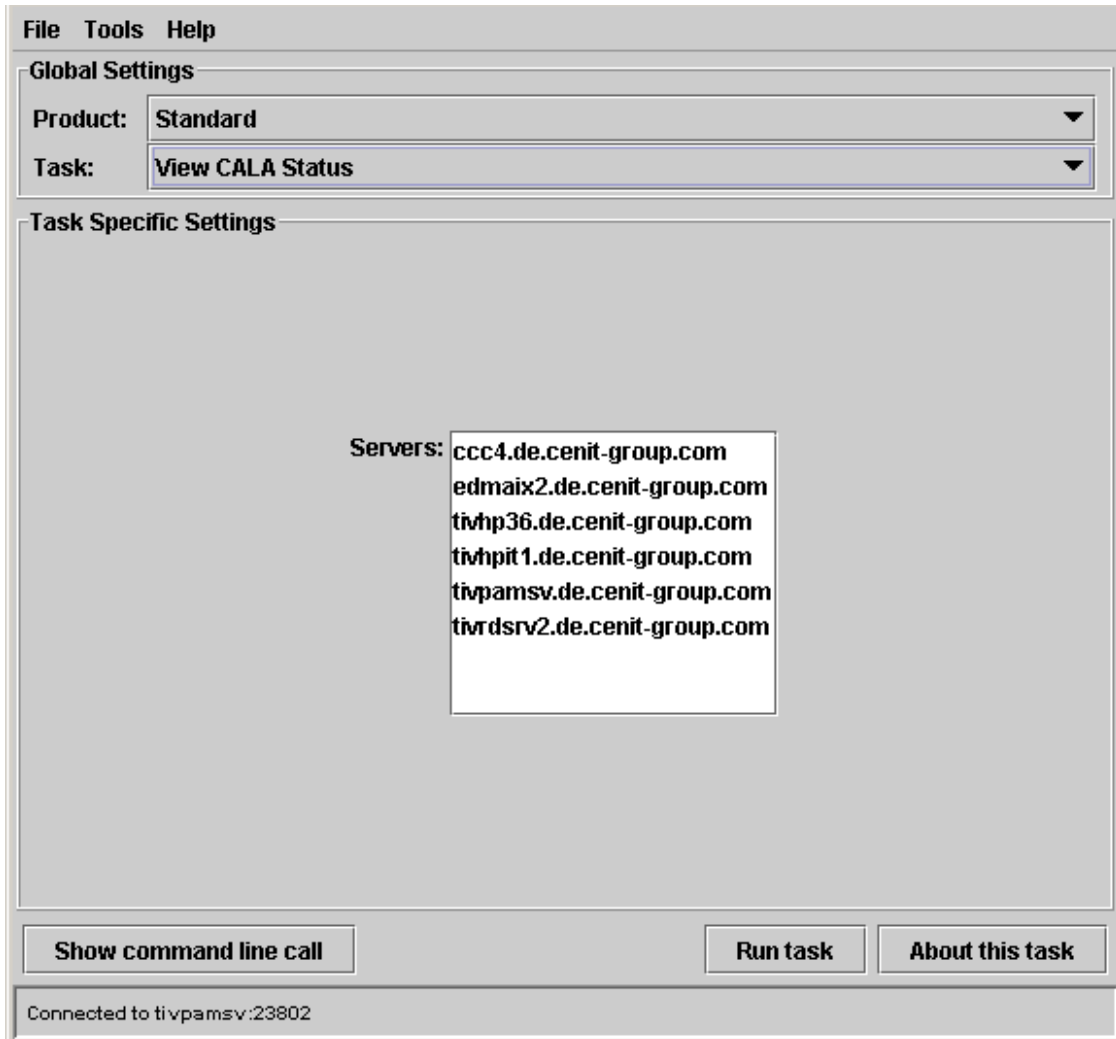
The image shows a simple login dialog box with a light gray background. On the left side, there are two labels: 'User:' and 'Password:'. To the right of each label is a white rectangular text input field. At the bottom of the dialog, there are two buttons: 'Login' on the left and 'Cancel' on the right. The buttons have a slightly darker gray background and a thin border.

Login

Log in with a user that has the appropriate permission to execute tasks. The CalaTEMa window opens.

The upper part of the Task Execution Manager window shows the list of products that are available for the user.

The **Tasks** combobox shows the administrative tasks for the selected product. The panel titled **Task Specific Settings** changes if the task selection changes and shows the parameters for the currently selected task.



Main window

## The File menu

The *Exit* entry exits the Task Execution Manager.

## The Tools menu

The *View cala\_rex clients ...* entry shows all clients that are currently connected to the cala\_rex server to which you are logged in.

The *Show environment ...* entry shows the environment settings of a selected cala\_rex client if a process is executed on that client.

The *Login ...* entry allows you to login as another user without exiting the Task Execution Manager.



The *Add custom task ...* entry allows you to create custom tasks for execution with CalATEMa. See detailed description below.

The *Edit custom task ...* entry allows you to edit tasks created by the *Add custom task ...* menu entry..

The *Remove custom task ...* entry allows you to remove tasks created by the *Add custom task ...* menu entry..

## ***The Help menu***

The *Help* entry shows global help for the Task Execution Manager.

The *About* entry shows version information about the Task Execution Manager.

## ***The Show command line call button***

This button displays a script with the command line call for the selected task including the given parameters. The script can be saved to a file and can be executed manually.

**NOTE** The displayed script is intended to run on the `cala_rex` server. To run it on a client, save the script and adjust the setting of the `CENIT_ROOT` variable to match the setting on the client where the command line call must be started.

## ***The Run task button***

This button starts the currently selected task. The Task Execution Manager checks if all required fields are filled in. If the task requires confirmation, a dialog is displayed.

## ***The About this task button***

This button shows specific help for the selected task. In this help window, you can find a short description of the task as well as a description of all parameters.

## Creating custom tasks

### *The Add new task dialog*

If you have the appropriate permission, you can create custom tasks.

Selecting the menu entry **Tools Add custom task ...** opens this window:

The dialog box is titled "Add custom" and contains the following elements:

- Product:** A dropdown menu with "Custom" selected.
- Task:** An empty text input field.
- Command:** An empty text input field.
- Confirm task execution**
- Arguments:** A large empty text area with three buttons on the right: "Add ...", "Edit ...", and "Remove".
- Environment:** A large empty text area with three buttons on the right: "Add ...", "Edit ...", and "Remove".
- Help:** A large empty text area.
- At the bottom: "Ok", "Cancel", and "Help" buttons.

Add custom

#### **Product**

Read-only. All custom tasks will be added to the product *Custom*.

### Task

Required. Specify the name of the task. The text you enter here will be shown in the **Task** listbox in the CalaTEMa main window.

### Command

Required. Enter the name of the command that must be executed. The command must be located on the server where the task is executed later.

### Confirm task execution

Optional. If you mark this checkbox, a confirmation window will be shown each time the new task is started.

### Arguments

Optional. Use the **Add** button to add new arguments. Use the **Edit** button to edit the selected argument. Use the **Remove** button to remove the selected argument.

The **Add** and **Edit** buttons open the **Add argument** dialog which is described below.

### Environment

Optional. Use the **Add** button to add new environment settings. Use the **Edit** button to edit the selected environment setting. Use the **Remove** button to remove the selected environment setting.

The **Add** and **Edit** buttons open the **Add setting** dialog which is described below.

### Help

Optional. Enter a help text for the new task. The help text is shown if the **About this task** button in the CalaTEMa main window is pressed.

## *The Add argument dialog*

In this dialog, you can define a command line argument for the task.



Add argument dialog

**Name**

Required. Enter the name of the field. The text you enter here will be used as label in the CalaTEMa main window.

**Field has constant value**

Optional. Mark this checkbox if no entry field is needed for this argument. The label of the **Name** field changes to **Value** because the value you enter in the textfield will always be passed to the task.

**Field is required**

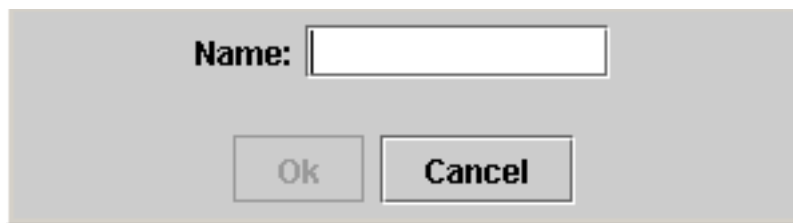
Optional. Mark this checkbox if the argument is mandatory. The task cannot be started if the field is left empty.

**Skip field if empty**

Optional. Mark this checkbox if the argument need not be passed to the task if it is left empty. If you do not check this option, an empty field will be passed for this parameter if the field is left empty.

***The Add setting dialog***

In this dialog, you can define environment settings for the task.



Add setting dialog

**Name**

Required. Enter the name of the environment variable you need to set for the task.

**Example: Custom task "Start Service"**

The following example shows how to define a task that can be used to start services on Windows machines.

The task is called *Start Service*. It uses the **net** binary that is located on the Windows machine.

The screenshot shows a dialog box for adding a custom task. It contains the following fields and controls:

- Product:** Custom
- Task:** Start Service
- Command:** net
- Confirm task execution
- Arguments:**
  - start (constant value)
  - Service name
  - Buttons: Add ..., Edit ..., Remove
- Environment:**
  - Buttons: Add ..., Edit ..., Remove
- Help:** use this task to start a service on a Windows machine.
- Buttons: Ok, Cancel, Help

Example - Add custom task

Two arguments must be passed to the *net* command:

The option `start` which is defined as a constant value:



Value: start

**Field has constant value**

Field is required

Skip field if empty

Ok Cancel Help

Example - Add argument 1

The Service name which must always be specified:



Name: Service name

Field has constant value

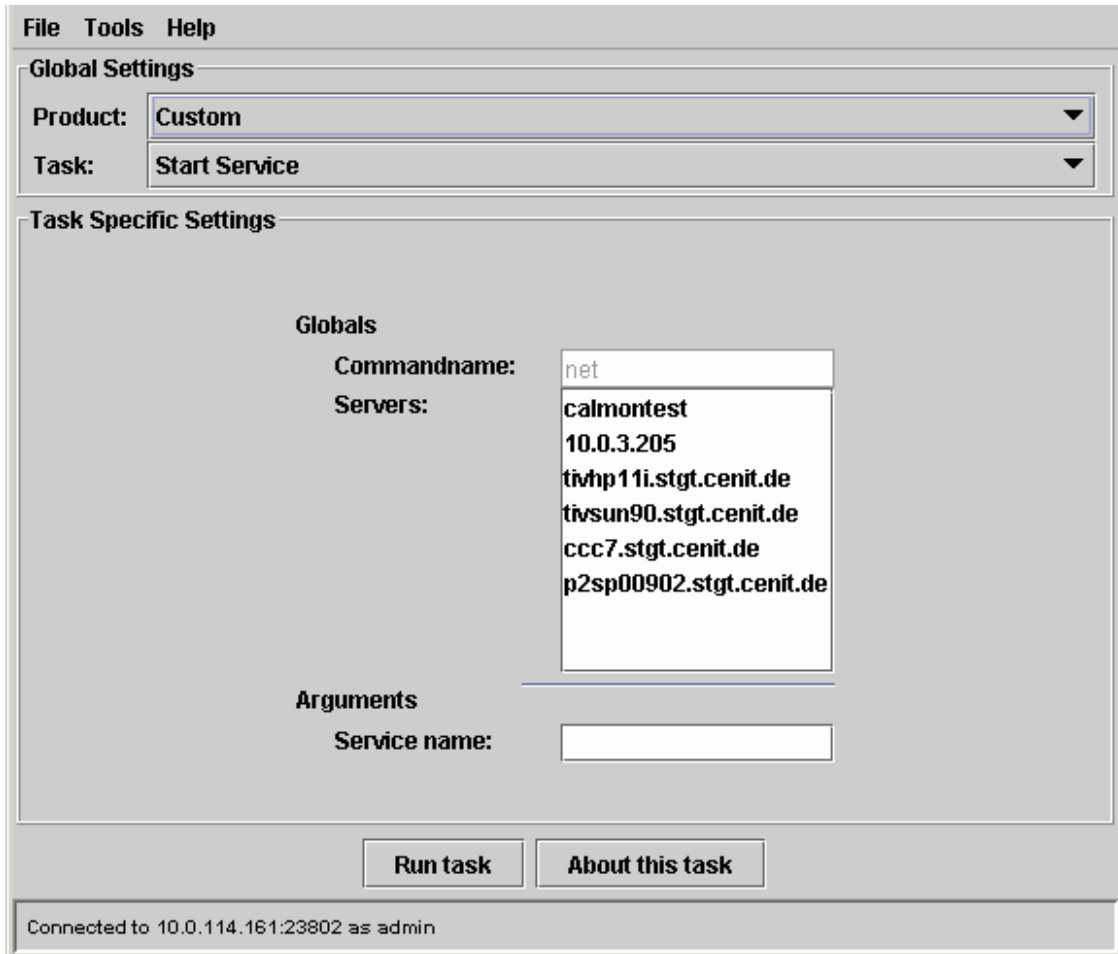
**Field is required**

Skip field if empty

Ok Cancel Help

Example - Add argument 2

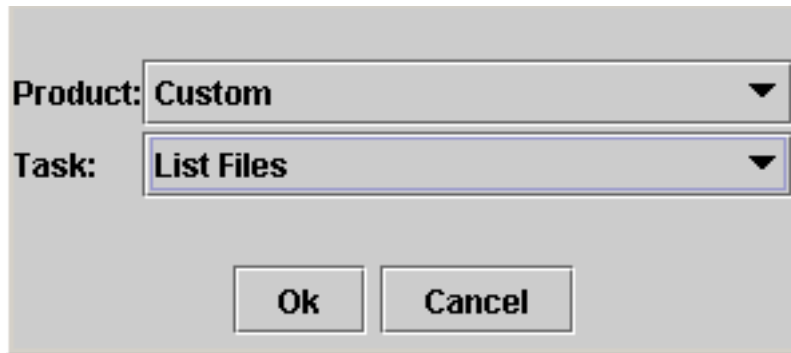
After pressing the **Ok** button in the **Add custom task** dialog, the new task is automatically selected:



Example - Resulting custom task

## Editing custom tasks

After selecting **Tools *Edit custom task ...*** a dialog is opened where you can choose the task you want to edit.



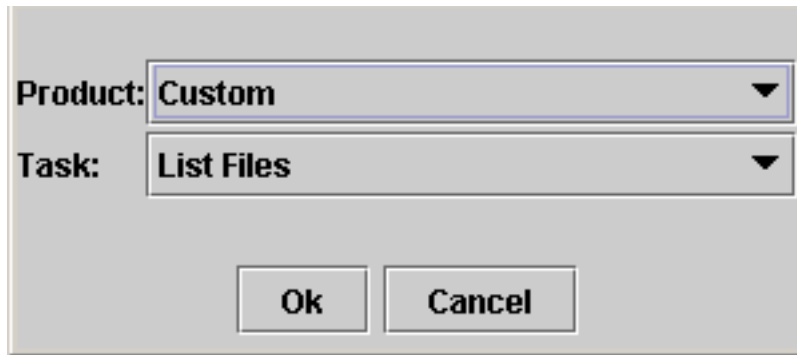
Edit custom

After selecting the task and pressing the **Ok** button, the task is loaded into the **Add custom task ...** dialog which is described above.



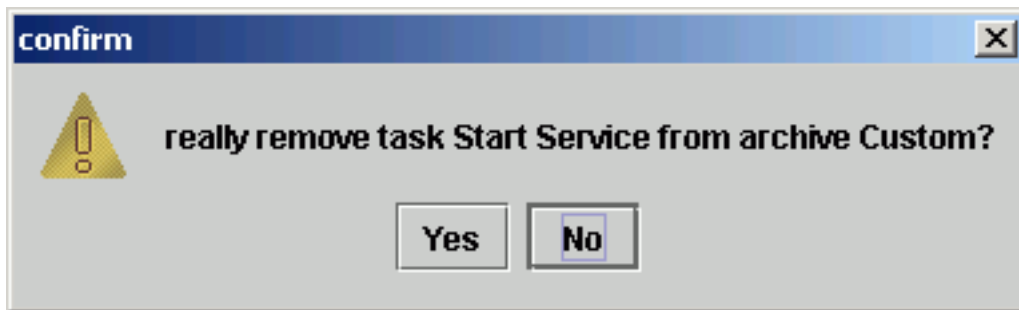
## Removing custom tasks

After selecting **Tools Remove custom task ...** a dialog is opened where you can choose the task you want to remove.



Remove custom

After selecting the task and pressing the **Ok** button, a dialog is displayed where you must confirm removal of the selected task.



Confirm dialog for Remove-

## Migration Tasks

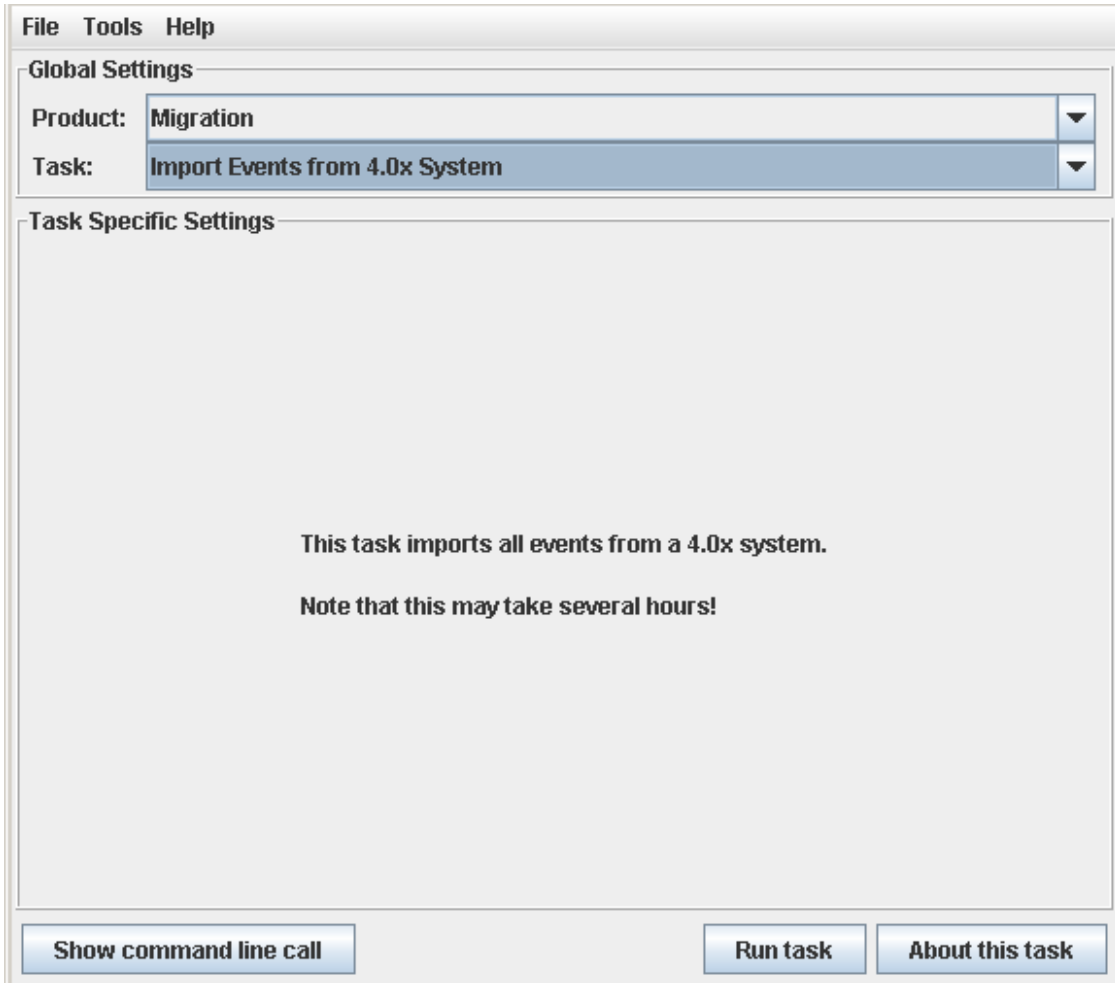
### Import Events from 4.0x System

#### *Description*

This task is used to import Event data from previous FSM 4.0x database into a 4.5.0 server.

This task can only run once with return code 0. After successful import of 4.0x Event data a lock file is generated at \$CENIT\_ROOT/var/log. Only remove this lock file and restart this task, if you are sure Events were not imported correctly.

## Parameters



Import Event data

## Update CalaRex

### *Description*

This task is used to update one or more existing `cala_rex` Client installations at once. New agent files are downloaded from the FSM Server to the selected clients and replaced through an agent restart.

The agent restart cannot be scheduled. The restart will be done automatically initiated after the agent files are downloaded to the clients.

In addition, the task can connect the `cala_rex` and CALA client to a new server, e.g. during migration to a new server. Note: The files `logctlsrv.conf`, `cala_variables.txt`, `cmdtab_basis.tbl`, `cmdtab_merged.cdb` (monitoring agent configuration files) and the CALA\_REX client configuration file `cala_rex_cli.cfg` are adjusted by the task. A backup file for each of the adjusted files is created (added `_backup` to the file name).

## Parameters

Update CalaRex

### Servers

Required. Select the server(s) where the `cala_rex` client must be updated.

### Server name

Optional. Specify the name of the new server where the CalaRex and CALA client should connect to.

### CalaRex Port

Optional. Specify the port on which the CalaRex server listens on the new server.

### Event Reception Port

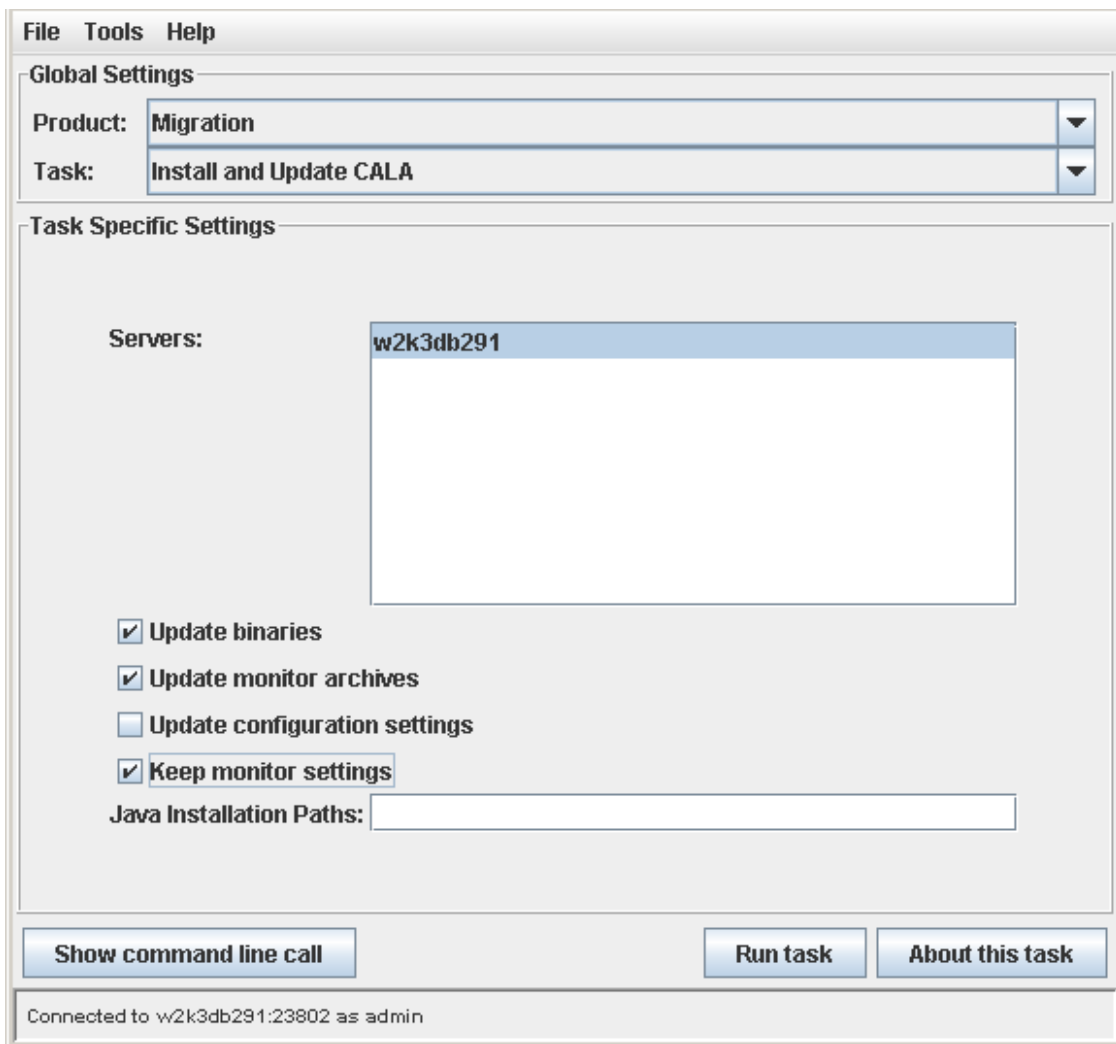
Optional. Specify the CALA event reception port on the new server.

# Update and Install CALA

## Description

This task is used to install or update FSM CALA agents on selected clients.

## Parameters



Update and Install

### Servers

Required. Select the server(s) where the CALA client agent must be updated.

### Update binaries

If selected in combination with the checkbox **Keep monitor settings** the FSM CALA binaries are updated to the selected clients. Therefore the FSM CALA agent is stopped on the client, the new FSM CALA agent binaries are downloaded to the client. After replacing the existing CALA agent files on the client system the agent will be restarted.

If combined with the checkbox **Keep monitoring settings** the FSM CALA configuration and setup information is not changed. This is not a complete FSM CALA installation, only the binaries will be updated

### Update monitor archives

If selected in combination with the checkbox **Keep monitor settings** the FSM CALA monitoring archives (cepest files) are updated to the selected clients. Therefore the FSM CALA agent is stopped on the client, the new FSM CALA monitoring archives are downloaded to the client. After replacing the existing monitoring archives on the client system the agent will be restarted.

If combined with the checkbox **Keep monitoring settings** the FSM CALA configuration and setup information is not changed. This is not a complete FSM CALA installation, only the monitoring archive will be updated.

**NOTE** In some cases monitoring parameters may have been changed with the latest version of the monitoring archive. In this case it might be necessary to adjust monitoring settings on the updated client system.

### Update configuration settings

Selecting the checkbox **Update configuration settings** initiates a GUI-less FSM CALA installation that requires manual preparation of configuration files.

The chapter *Preparing a MIM installation* in the *Mass Installation and Update Guide* describes the required manual configuration steps and required files for MIM configuration details

### Keep monitor settings

Running the task with selected checkbox **Keep monitor settings** in combination with checkbox **Update binaries** or **Update monitor archives** without selecting **Update configuration settings** replaces the FSM CALA binaries or monitoring archives on the specified clients.

### Java installation paths

This field can contain a list of Java installation paths, separated by comma or semicolon. During task execution on the selected client the list is searched for appropriate Java versions. The task requires at least Java version 1.4. If no suitable Java version is found the task cannot complete on the system.

**NOTE** Once the task found a suitable Java version a file `.java_dir` in the FSM CALA client installation directory is stored that points to the Java location used. Further installation with this task does not require the Java path any longer, as long as the location of the Java installation exists.

*Combining Checkboxes 'Update binaries' and 'Update monitoring archives'*

The two checkboxes **Update binaries** and **Update monitoring archives** can be checked at once (in combination with **Keep monitor settings**) to update the FSM CALA Agent binaries and the monitoring archives on the clients within one step.



## Appendix A. Copyright notice

### IBM FileNet System Monitor (12 March 2011)

Copyright © 2000-2011 CENIT AG, Germany; Copyright © 2005, 2011 IBM Corp., USA including this documentation and all software.

No part of this publication may be reproduced, transmitted, transcribed, stored in a retrieval system, or translated into any computer language, in any form or by any means, electronic, mechanical, magnetic, optical, chemical, manual, or otherwise, without prior written permission of the copyright owners. The copyright owners grants you limited permission to make hardcopy or other reproductions of any machine-readable documentation for your own use, provided that each such reproduction shall carry the original copyright notice. No other rights under copyright are granted without prior written permission of the copyright owners. The document is not intended for production and is furnished as is without warranty of any kind. *All warranties on this document are hereby disclaimed including the warranties of merchantability and fitness for a particular purpose.*

Note to U.S. Government Users Documentation related to restricted rights Use, duplication or disclosure is subject to restrictions set forth in GSA

---

## Notices

This information was developed for products and services offered in the U.S.A.

IBM may not offer the products, services, or features discussed in this document in other countries. Consult your local IBM representative for information on the products and services currently available in your area. Any reference to an IBM product, program, or service is not intended to state or imply that only that IBM product, program, or service may be used. Any functionally equivalent product, program, or service that does not infringe any IBM intellectual property right may be used instead. However, it is the user's responsibility to evaluate and verify the operation of any non-IBM product, program, or service.

IBM may have patents or pending patent applications covering subject matter described in this document. The furnishing of this document does not grant you any license to these patents. You can send license inquiries, in writing, to:

IBM Director of Licensing  
IBM Corporation  
North Castle Drive  
Armonk, NY 10504-1785  
U.S.A.

For license inquiries regarding double-byte (DBCS) information, contact the IBM Intellectual Property Department in your country or send inquiries, in writing, to:

IBM World Trade Asia Corporation  
Licensing  
2-31 Roppongi 3-chome, Minato-ku  
Tokyo 106-0032, Japan

**The following paragraph does not apply to the United Kingdom or any other country where such provisions are inconsistent with local law:** INTERNATIONAL BUSINESS MACHINES CORPORATION PROVIDES THIS PUBLICATION "AS IS" WITHOUT WARRANTY OF ANY KIND, EITHER EXPRESS OR IMPLIED, INCLUDING, BUT NOT LIMITED TO, THE IMPLIED WARRANTIES OF NON-INFRINGEMENT, MERCHANTABILITY OR FITNESS FOR A PARTICULAR PURPOSE. Some states do not allow disclaimer of express or implied warranties in certain transactions, therefore, this statement may not apply to you.

This information could include technical inaccuracies or typographical errors. Changes are periodically made to the information herein; these changes will be incorporated in new editions of the publication. IBM may make improvements and/or changes in the product(s) and/or the program(s) described in this publication at any time without notice.

Any references in this information to non-IBM Web sites are provided for convenience only and do not in any manner serve as an endorsement of those Web sites. The materials at those Web sites are not part of the materials for this IBM product and use of those Web sites is at your own risk.

IBM may use or distribute any of the information you supply in any way it believes appropriate without incurring any obligation to you.

Licenseses of this program who wish to have information about it for the purpose of enabling: (i) the exchange of information between independently created programs and other programs (including this one) and (ii) the mutual use of the information which has been exchanged, should contact:

IBM Corporation  
J46A/G4  
555 Bailey Avenue  
San Jose, CA 95141-1003  
U.S.A.

Such information may be available, subject to appropriate terms and conditions, including in some cases, payment of a fee.

The licensed program described in this document and all licensed material available for it are provided by IBM under terms of the IBM Customer Agreement, IBM International Program License Agreement or any equivalent agreement between us.

Any performance data contained herein was determined in a controlled environment. Therefore, the results obtained in other operating environments may vary significantly. Some measurements may have been made on development-level systems and there is no guarantee that these measurements will be the same on generally available systems. Furthermore, some measurements may have been estimated through extrapolation. Actual results may vary. Users of this document should verify the applicable data for their specific environment.

Information concerning non-IBM products was obtained from the suppliers of those products, their published announcements or other publicly available sources. IBM has not tested those products and cannot confirm the accuracy of performance, compatibility or any other claims related to non-IBM products. Questions on the capabilities of non-IBM products should be addressed to the suppliers of those products.

All statements regarding IBM's future direction or intent are subject to change or withdrawal without notice, and represent goals and objectives only.

This information contains examples of data and reports used in daily business operations. To illustrate them as completely as possible, the examples include the names of individuals, companies, brands, and products. All of these names are fictitious and any similarity to the names and addresses used by an actual business enterprise is entirely coincidental.

#### COPYRIGHT LICENSE:

This information contains sample application programs in source language, which illustrate programming techniques on various operating platforms. You may copy, modify, and distribute these sample programs in any form without payment to IBM, for the purposes of developing, using, marketing or distributing application programs conforming to the application programming interface for the operating platform for which the sample programs are written. These examples have not been thoroughly tested under all conditions. IBM, therefore, cannot guarantee or imply reliability, serviceability, or function of these programs.

---

## Trademarks

IBM, the IBM logo, and [ibm.com](http://ibm.com) are trademarks or registered trademarks of International Business Machines Corporation in the United States, other countries, or both. If these and other IBM trademarked terms are marked on their first occurrence in this information with a trademark symbol (® or ™), these symbols indicate U.S. registered or common law trademarks owned by IBM at the time this information was published. Such trademarks may also be registered or common law trademarks in other countries. A current list of IBM trademarks is available on the Web at "Copyright and trademark information" at [www.ibm.com/legal/copytrade.shtml](http://www.ibm.com/legal/copytrade.shtml).

Java and all Java-based trademarks are trademarks of Sun Microsystems, Inc. in the United States, other countries, or both.

Microsoft, Windows, and Windows NT are trademarks of Microsoft Corporation in the United States, other countries, or both.

UNIX is a registered trademark of The Open Group in the United States and other countries.

Linux is a registered trademark of Linus Torvalds in the United States, other countries, or both.

Other company, product, and service names may be trademarks or service marks of others.