



# Image Services Resource Adapter

## Deployment Guide

For IBM WebSphere Application Server Version 8.x

Release 3.4 Fix pack 7

March 2015

© Copyright International Business Machines Corporation 1984, 2015. All rights reserved.

US Government Users Restricted Rights – Use, duplication or disclosure restricted by GSA ADP Schedule Contract with IBM Corp.



# Contents

## About This Manual 6

**Conventions Used in the Document 6**

**Related References 6**

**Comments and Suggestions 6**

## 1. ISRA Deployment 7

**Deployment Requirements 7**

Hardware Requirements 7

Software Requirements 7

**Deploying ISRA in a Standalone Environment 8**

**Deploying ISRA in a Clustered Environment 12**

**Deploying ISRA in an Application Server Cell 17**

**Mandatory Requirements for ISRA 21**

Steps to include listener.jar and log4j-1.2.8.jar in the classpath of Application Server are: 21

## 2. ISRA Configuration 23

**Configuring Deployed ISRA 23**

**Changing ISRA Specific Parameters 24**

Configurable ra.xml properties 26

DomainName 26

OrganizationName 27

LoggingLevel 27

LoggingMode 28

PageBufferSize 29

CacheRefreshInterval 29

SecurityCacheMode 30

MetaDataCacheRefreshMode 30

LogFileName 31

LogFileSize 31

LdapImplClassName 32

LdapImplClassString 32

InherentLogin 33

DeploymentInstance 33

PCHLogging 34

AllowAnonymousUser 35

RPCLogging 35

ClientCodepage 36

- GMTEnabled flag 37
- ISLocale 37
- IgnoreObjectBusyMsgInDocMigration 37
- Configuring WebSphere-Specific Parameters 37
- Configuring Multiple IS Server with ISRA 39

### **3. Configuring and Deploying ISRA Console and Sample Application 40**

- ISRA Console 40**

- Configuring Sample Application 40**

- Deploying ISRA Console and Sample Application in Standalone Environment 43**

- Deploying ISRA Console and Sample Application in a Clustered Environment 45**

- Using the ISRA Console 49

- Deploying IBM FileNet Image Viewer in Standalone Environment 51**

- Deploying IBM FileNet Image Viewer in Clustered Environment 53**

- IBM FileNet Image Viewer Quick Start Feature 56**

- Enabling Quick Start Feature 57

- Known Issues in the Quick Start Feature 58

- Testing Sample Application 58**

### **4. LDAP Configuration 60**

- Mapping Existing LDAP Server Users to IS 60**

- Changing ISRA Specific Parameters for LDAP 62**

### **5. Undeployment 63**

- Undeploying ISRA in a Standalone Environment 63**

- Undeploying ISRA in a Clustered Environment 64**

- Undeploying ISRA Console and Sample Application/FNImageViewer Application in a Standalone Environment 65**

- Undeploying ISRA Console and Sample Application/FNImageViewer Application in a Clustered Environment 66**

### **6. Troubleshooting 68**

- Disabling NCH Broadcasts 68**

### **Appendix A : ra.xml 69**



**ra.xml 69**

## **Notices 73**

**Notices 73**

**COPYRIGHT LICENSE: 74**

**Trademarks 74**

## **Index 76**

# About This Manual

This manual provides information about configuring IBM FileNet Image Services Resource Adapter (ISRA) 3.4.0.x on IBM WebSphere Application Server 8.x. Refer the separate ISRA Installation Guide for Installing ISRA 3.4.0.x.

## Conventions Used in the Document

The table lists the formatting conventions used in this document.

<u>Conventions</u>	<u>Description</u>
Fixed Size font	Used for commands entered at the system command prompt.
Arial font	Used for important notes.
<b>Bold</b>	Occasionally used to refer to portions of user interface, such as the <b>Next</b> button or the <b>Install</b> button.

## Related References

For all ImageViewer parameters please refer to the FNImageViewer documentation provided with ISRA installation media.

<ISRA-home>\ISRA340\FNImageViewer\docs

For all P8 System Manager related information, please refer to P8 System Manager Documentation, provided with ISRA installation media.

<ISRA-home>\ISRA340\SystemManager\docs

## Comments and Suggestions

IBM FileNet invites all customers to communicate with the [Documentation group](#) on any question or comment related to IBM FileNet manuals and online help. Send email to [comments@us.ibm.com](mailto:comments@us.ibm.com). We will make every effort to respond within one week. Your suggestions help us improve the products we deliver.

# 1 . ISRA Deployment

This chapter describes the deployment of ISRA on IBM WebSphere Application Server version 8.x.

---

**Note** The installation procedure for IBM WebSphere Application Server v7 and installing ISRA in clustered environment is outside the scope of this document, and it is assumed the required settings and configurations are satisfied.

---

The ISRA module is a set of Java interfaces/classes that implements J2EE Connector Architecture specified contracts and the EIS specific functionality. ISRA plugs into IBM WebSphere Application Server in a modular manner.

## Deployment Requirements

This section lists the minimum software and hardware requirements for successful deployment of ISRA on an IBM WebSphere Application Server v7.

---

**Caution** All the xml related to the deployment of ISRA must be created manually or use a pre-existing file that is valid. Do not copy xml contents straight from the Deployment Guide.

---

## Hardware Requirements

- Please refer to the IBM WebSphere system requirements section at <http://www-01.ibm.com/software/webserver/appserv/was/requirements>
- The IBM WebSphere documentation is available at <http://www.ibm.com/developerworks/websphere/zones/portal/proddoc/>
- ISRA installation will require approximately 120 MB free disk space.

## Software Requirements

- IBM WebSphere Application Server 8.x installed on HPUX 11i Patch Bundle B.11.31, IBM AIX 6.1, Linux AS 5.0, Sun Solaris 10, Windows 2008 Server, Novell SUSE Linux Enterprise Server 10 (System Z-64 bit, x86 32/64 bit), SUSE Enterprise Server 10 (System Z-64 bit).
- IBM WebSphere Network Deployment Manager 7.x installed on HPUX 11i Patch Bundle B.11.31, IBM AIX 6.1, Linux AS 5.0, Sun Solaris 10, Windows 2008 Server, Novell SUSE Linux Enterprise Server 10 (System Z-64 bit, x86 32/64 bit), SUSE Enterprise Server 10 (System Z-64 bit).
- IBM FileNet IS 4.1.x and above.

## Deploying ISRA in a Standalone Environment

---

**Note** The screenshots shown for deployment/Undeployment of ISRA, Sample Application or FNImageViewer (taken on IBM WebSphere Application Server 8.x on Windows 2008 Server) may look slightly different on the user's machine, depending on the server, platform version or settings etc.

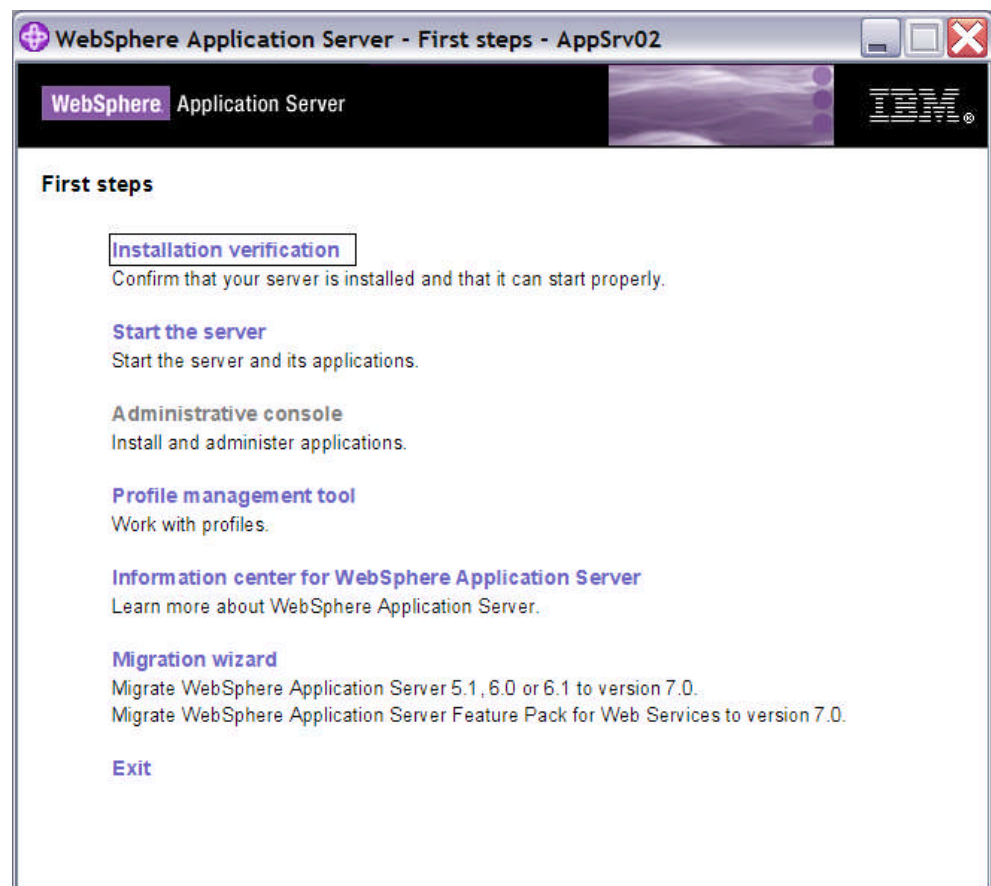
---

Remove/undeploy previous ISRA Versions (3.1/3.2/3.3), refer details on [Undeployment](#). Also stop any running ISRA Sample and FNImageViewer before the undeployment is done. After the successful undeployment, please follow the below steps for new/re-deployment of ISRA.

ISRA is deployed using the WebSphere Administrative Console. The steps to deploy are:

1. Start the WebSphere 'First steps'. Login as the root user and execute the WebSphere `firststeps.sh` script, as follows:

```
# cd <WebSphere home>/AppServer/profiles/default/firststeps
# ./firststeps.sh
```



2. Click **Start the server**.
3. Launch a web browser and enter the URL `http://<server>:<port>/admin`.

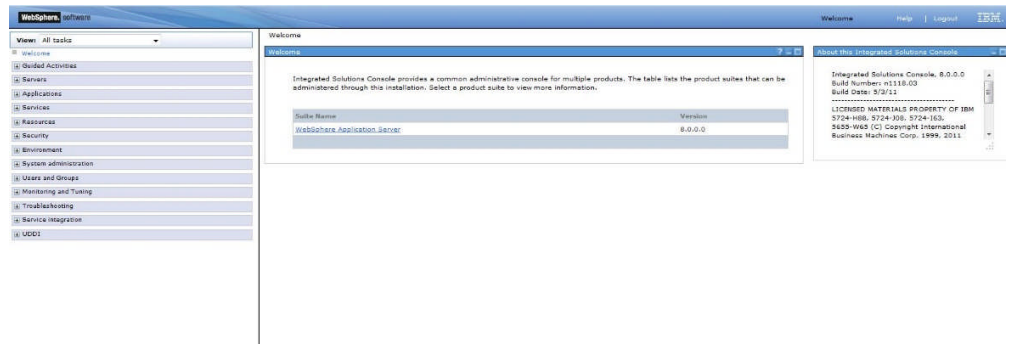
Here, 'server' is name of the host where WebSphere server is running and 'port' is the port number on which the admin server is listening.

Login to the WebSphere Administrative console, which is a web based interface.

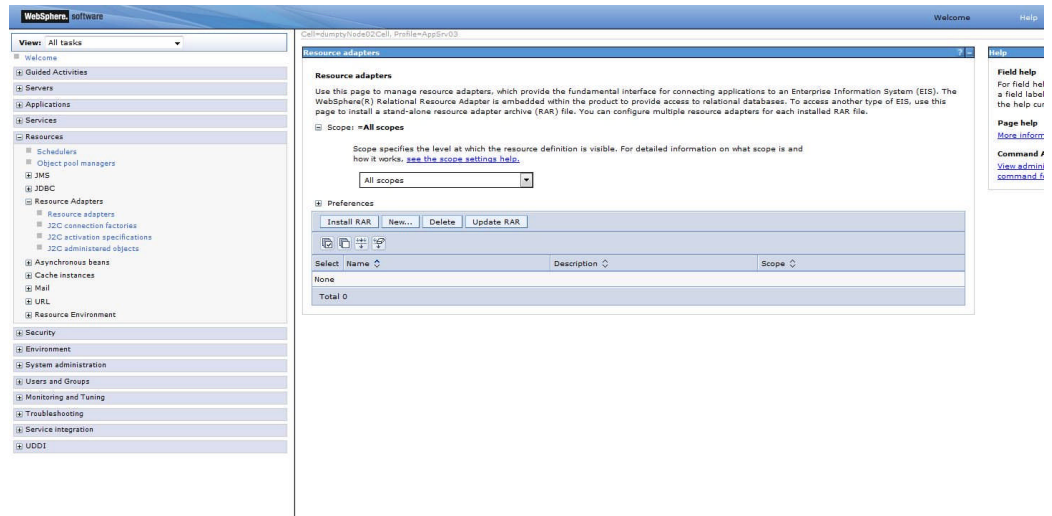
The WebSphere Administrative console screen appears:



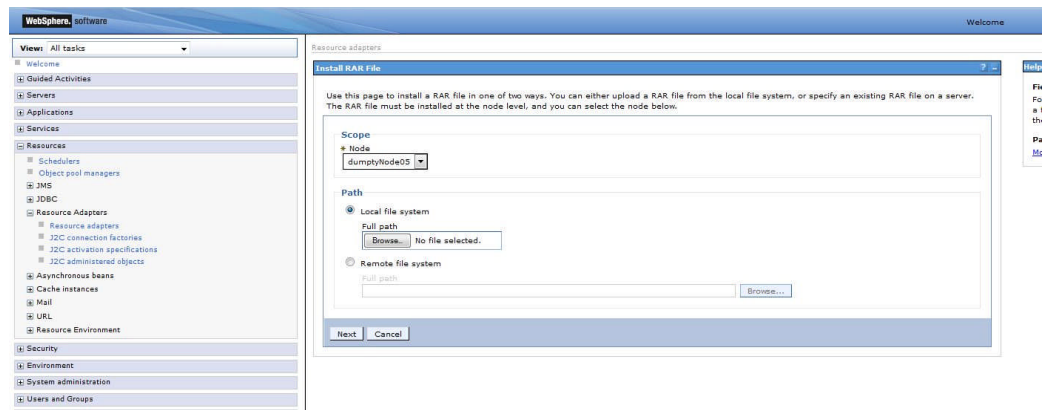
4. Enter the **User ID** and click **Log in**. The following screen appears:



5. Navigate to **Resources >Resource Adapters >Resource Adapters**. The following screen appears:



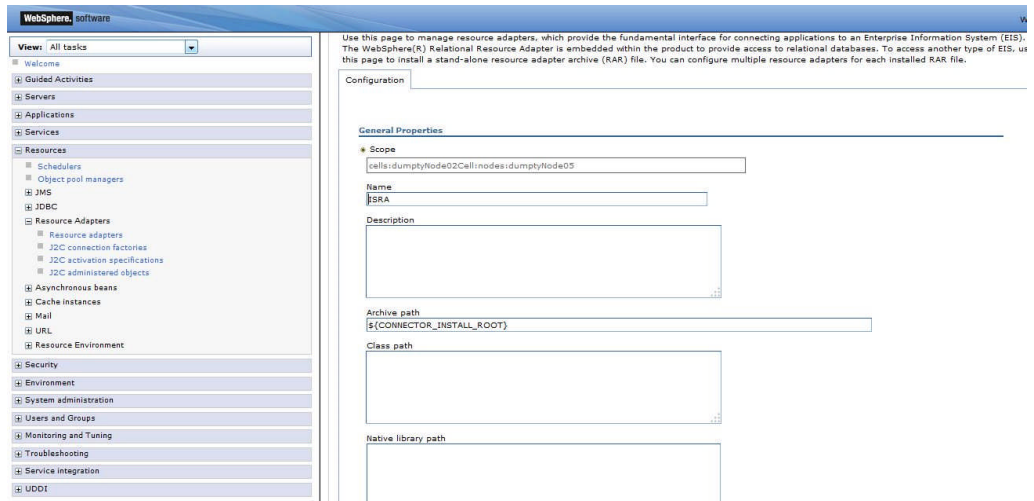
6. Click **Install RAR**. The following screen appears:



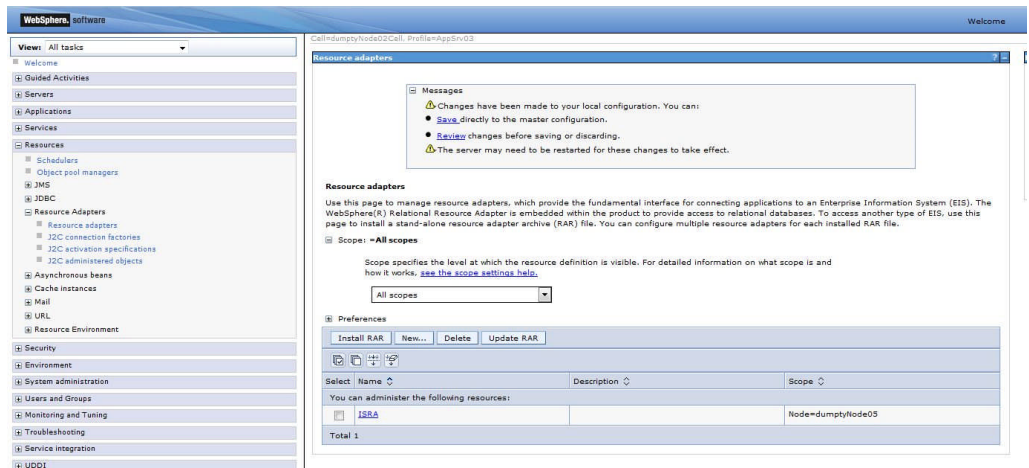
7. Click **Browse** to navigate to the directory where ISRA.rar is located.

In the case of ISRA 3.4.0 GA version, it will be there in the "jar" folder of ISRA 3.4.0 installation dir. And in the case of an ISRA Fix pack (like 3.4 Fix pack 1), it will be there in the Fix pack extracted dir.

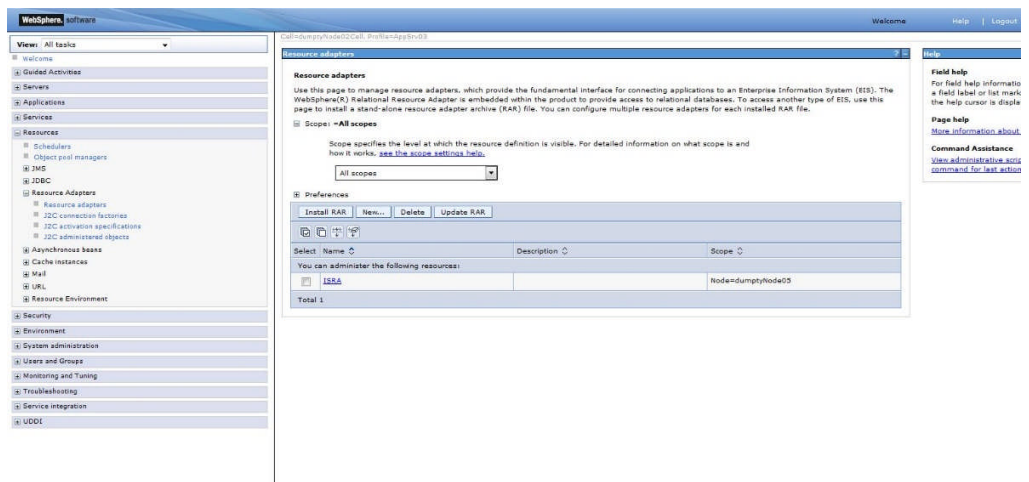
Select the **ISRA.rar**, Click **Next**. The General Properties screen appears.



8. Click **OK**. The ISRA.rar file gets uploaded. A confirmation message is displayed, as shown in the screen below:



9. Click the **Save** link in the **Messages** box (in the right pane).



10. Deploying ISRA is completed.

11. Next step is to complete the Mandatory steps necessary for ISRA.  
Refer to [Mandatory Requirements for ISRA](#) section.
12. Restart the WebSphere Node (or Application Server) after deployment. This step is required to ensure that the ISRA classes are in the Application Server's CLASSPATH.
13. To verify the ISRA deployment, deploy the ISRA Console and Sample Application provided with ISRA and logon through the Sample Application.

---

**Note** User can configure multiple Connection Factories with unique JNDI names to connect to multiple IS servers from ISRA. Configuration of multiple Connection Factories is explained in [Configuring Deployed ISRA](#) section.

---

## Deploying ISRA in a Clustered Environment

In a clustered environment, ISRA is deployed using the WebSphere Network Deployment Manager Administrative console.

---

**Note** After installing Network Deployment Manager you need to create a Deployment Manager profile using Profile Creation Wizard. For example "dmgr" profile mentioned below in the first step of ISRA deployment.

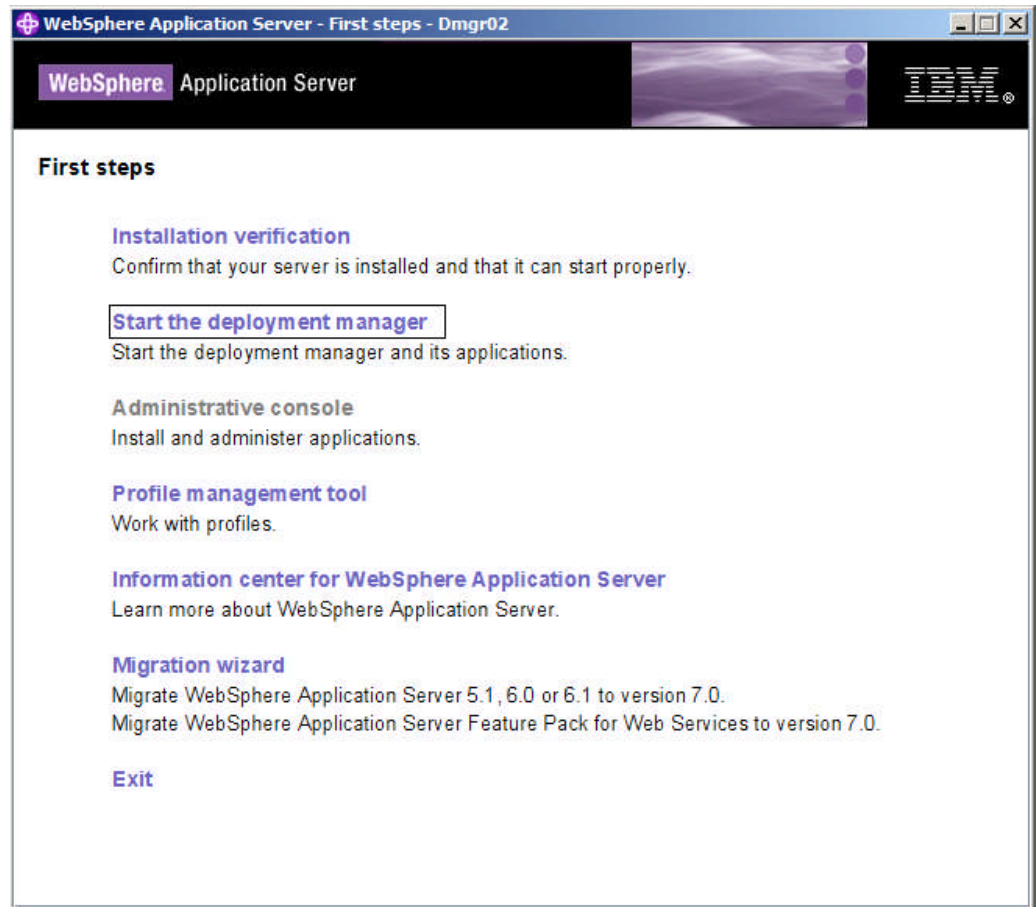
---

The steps to deploy ISRA are:

1. Start the WebSphere 'First Steps'. Login as the root user and execute the WebSphere `firststeps.sh` script, as follows:  

```
# cd <DeploymentManager home>/profiles/dmgr/firststeps
# ./firststeps.sh
```

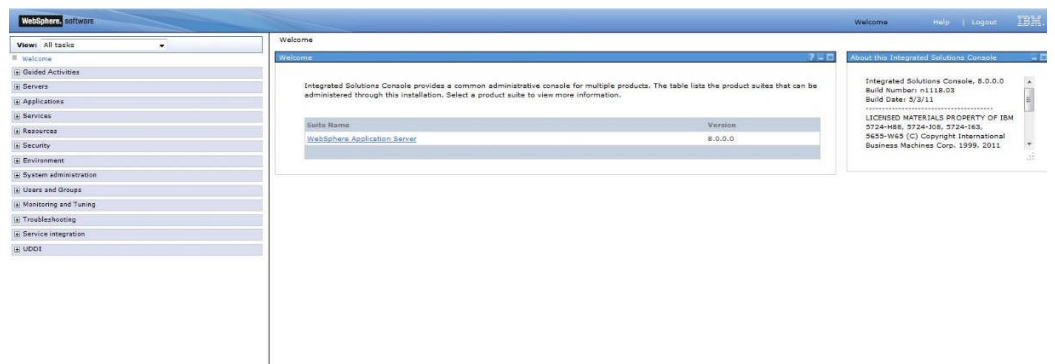




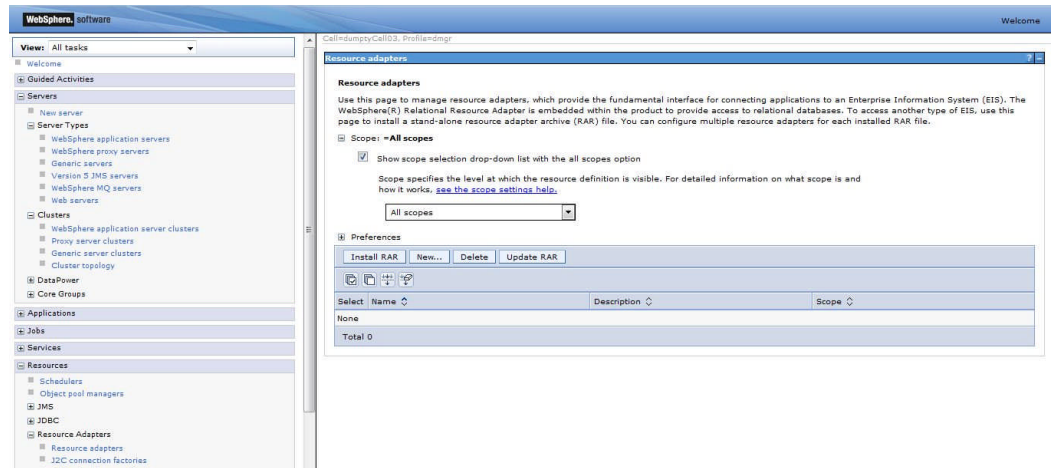
2. Click **Start the Deployment Manager**.
3. Launch a web browser and enter the URL `http://<server>:<port>/admin`  
Here, 'server' is name of the host where WebSphere Network Deployment Manager is running and 'port' is the port number on which the admin server is listening. By default, this port number is 9091.  
Login to the WebSphere Network Deployment Manager Administrative console, which is a web based interface.  
The WebSphere Administrative console screen appears.



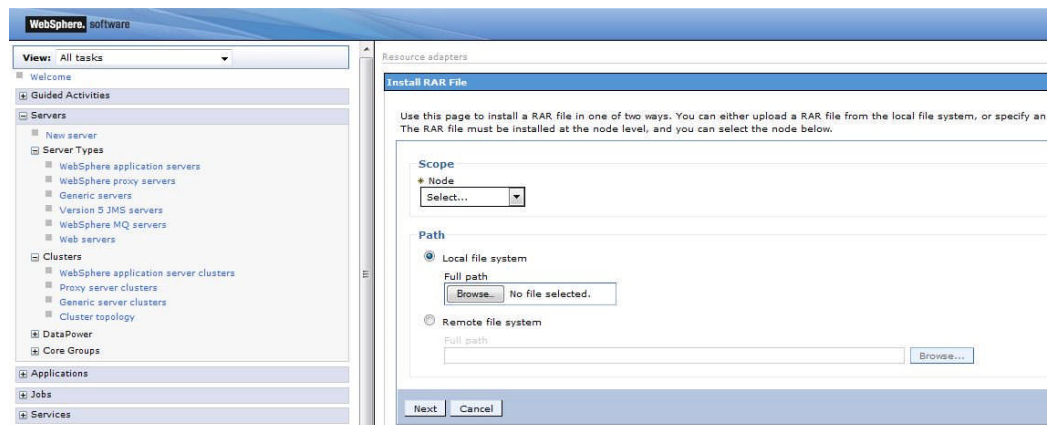
4. Enter **User ID** and click **OK**. The following screen appears:



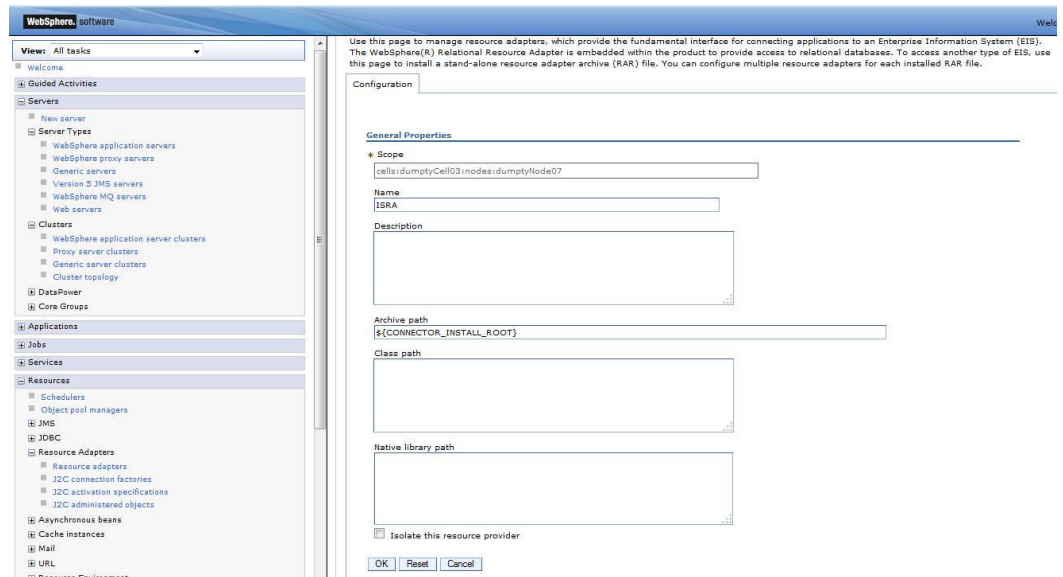
5. Navigate to **Resources >Resource Adapters >Resource Adapters**. The following screen appears:



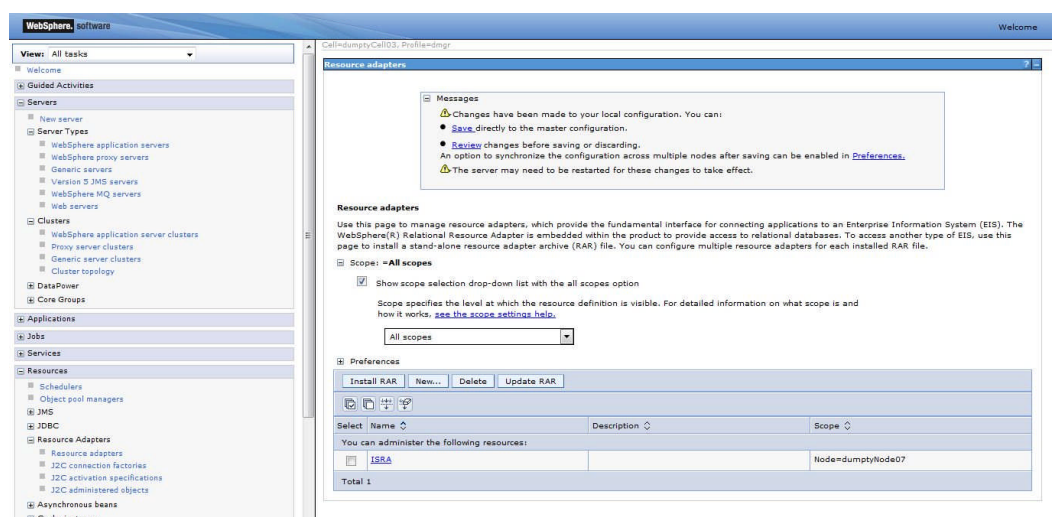
6. Click on Install RAR. The following screen appears:



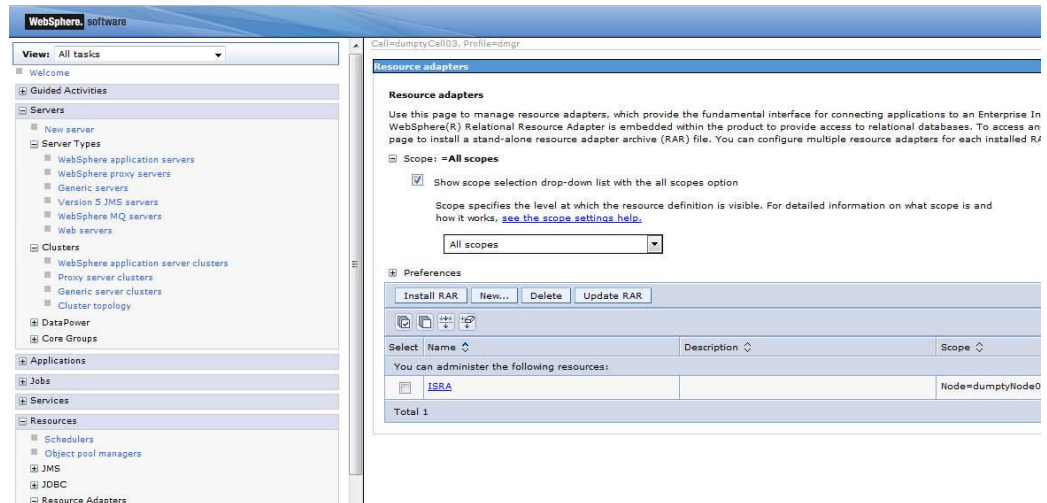
7. Click on a node where ISRA is to be deployed.
8. Click **Browse** to navigate to the directory where ISRA 3.4.0 is saved. Select the **ISRA.rar** file from the ISRA installation directory. Click **Next**. The General Properties screen appears.



9. Mention the path for the ISRA.jar in the class path and click on **OK**. The ISRA.rar file gets uploaded. A confirmation message is displayed, as shown in the following screens:



10. Click **Save** to save the changes to the master configuration. The following screen appears:



11. Deploying ISRA is completed.
12. Next step is to complete the Mandatory steps necessary for ISRA. Refer [Mandatory Requirements for ISRA](#) section.
13. To verify the ISRA deployment, deploy the ISRA Console and Sample Application provided with ISRA and perform a logon through the Sample Application.
14. Restart the WebSphere cluster using the Network Deployment Manager after deployment. This step is required to ensure that the ISRA is deployed properly in the cluster.

---

**Note** User can configure multiple Connection Factories with unique JNDI names to connect to multiple IS servers from ISRA. Configuration of multiple Connection Factories is explained in [Configuring Deployed ISRA](#) section.

**Note** Deployment of ISRA on Cluster on WAS can be automated. Refer to the [developerWorks title: Automation of ISRA Deployment on WAS Cluster](#) article.

---

## Deploying ISRA in an Application Server Cell

---

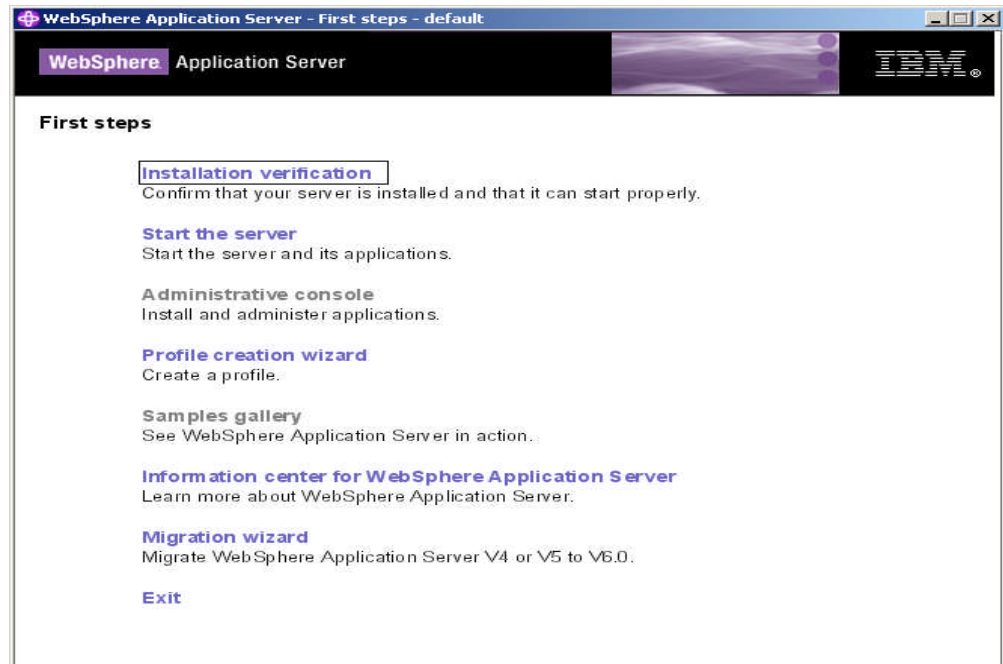
**Note** The screenshots shown for deployment/Undeployment of ISRA, Sample Application or FNImageViewer (taken on IBM WebSphere Application Server 8.x on Windows 2008 Server) may look slightly different on the user's machine, depending on the server, platform version or settings etc.

---

ISRA is deployed using the WebSphere Administrative Console. The steps to deploy are:

1. Start the WebSphere 'First steps'. Login as the root user and execute the WebSphere `firststeps.sh` script, as follows:
 

```
# cd <WebSphere home>/AppServer/profiles/default/firststeps
# ./firststeps.sh
```



2. Click **Start the server**.

Launch a web browser and enter the URL  
`http://<server>:<port>/ibm/console`, in the browser to open the IBM  
WebSphere console.

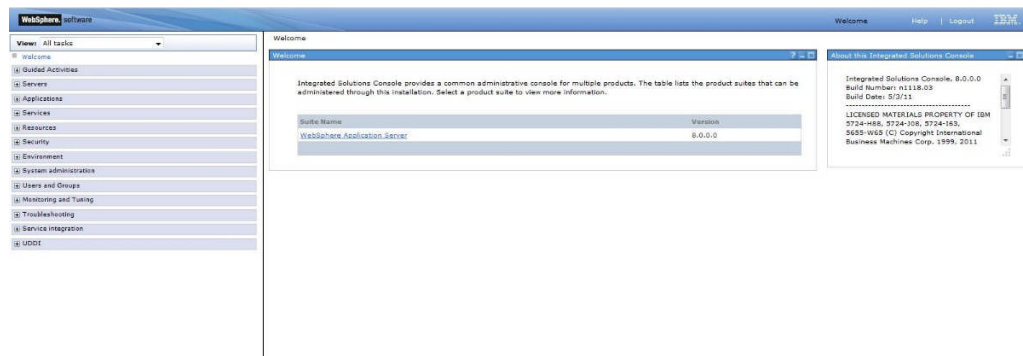
Here, 'server' is name of the host where WebSphere server is running and  
'port' is the port number on which the admin server is listening. By default,  
this port number is 9060.

Login to the WebSphere Administrative console, which is a web based  
interface.

The WebSphere Administrative console screen appears:

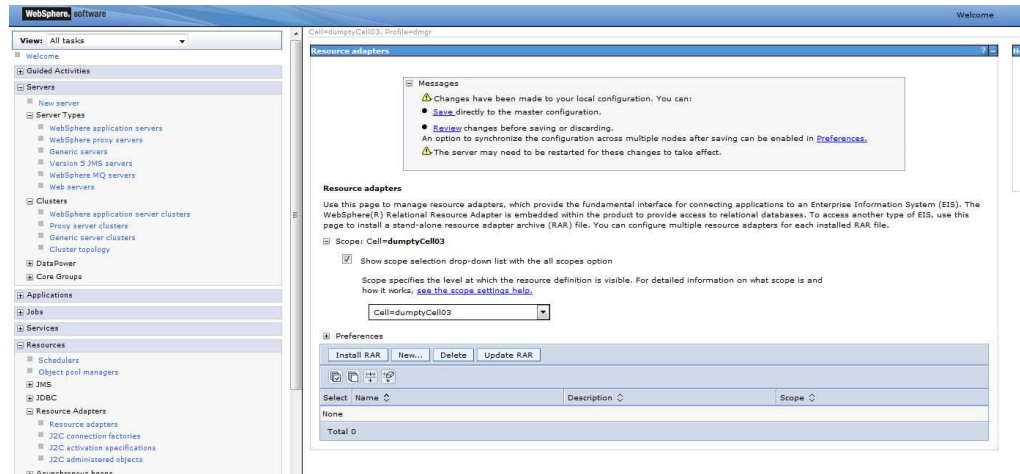


3. Enter **User ID** and click on **Login** button, the following screen appears.

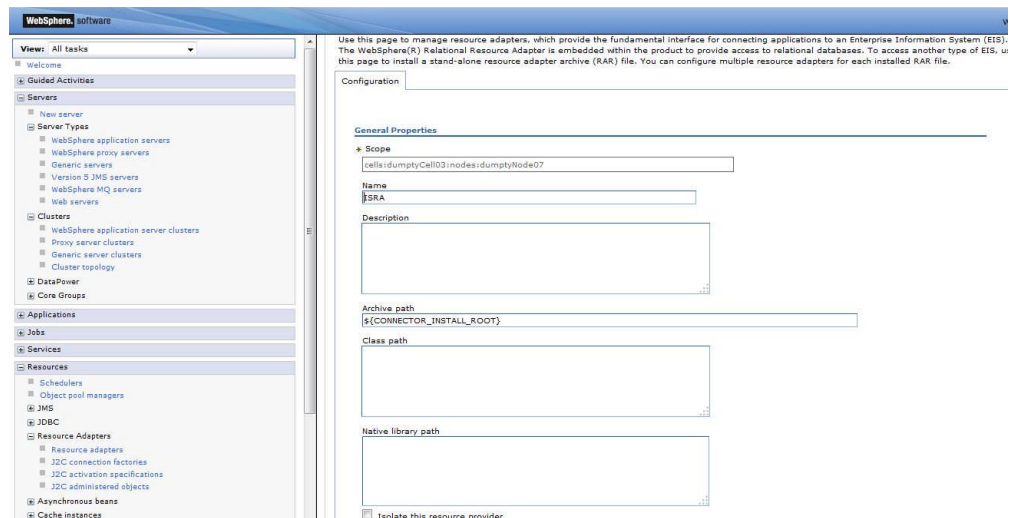


4. Navigate to **Resources > Resource Adapters > Resource Adapters**. The following screen appears:

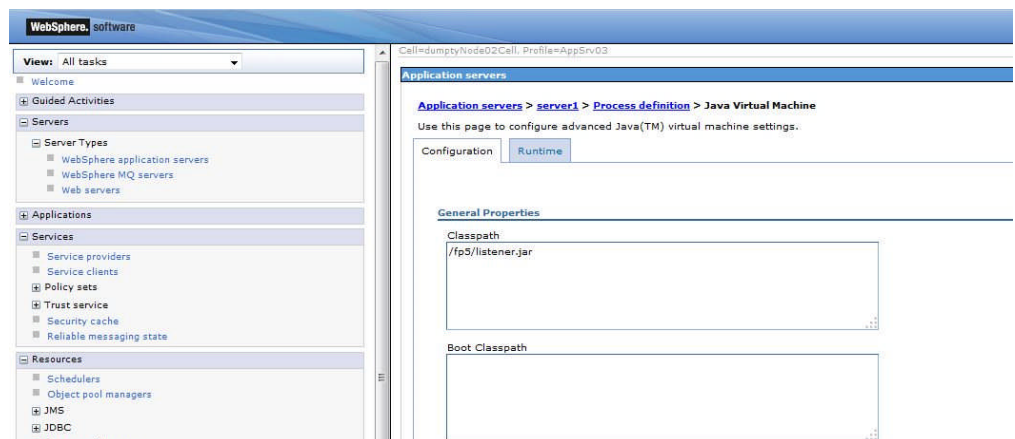




5. Select the **Cell** option where ISRA is to be deployed.
6. Click **New**.

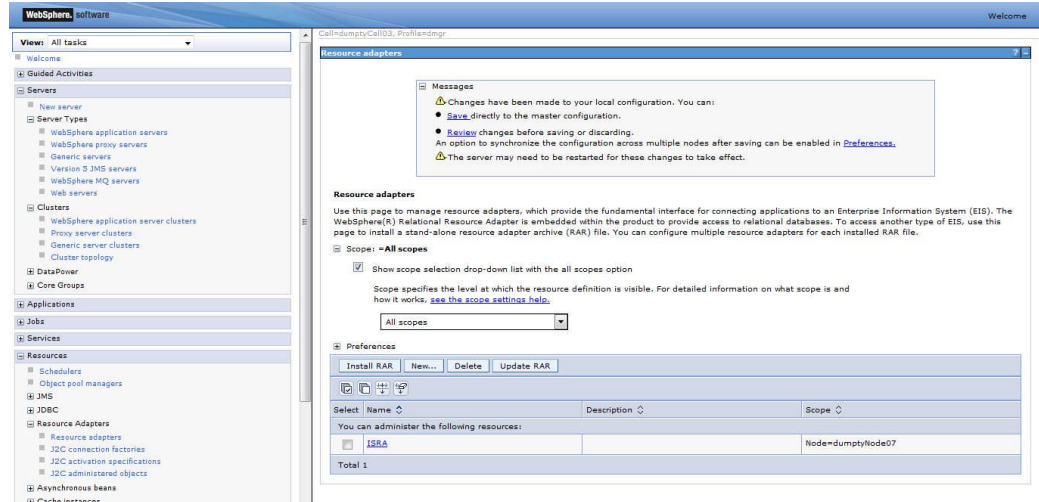


7. Enter the **Name** for the resource adapter and specify the archive path as the path of the ISRA.rar file. The RAR file needs to be manually copied to each node in the cell and the path must be identical.





- Specify ISRA.jar, log4j-1.2.8.jar and listener.jar in the class path. The path of ISRA.jar has to be provided in the class path of the resource adapter. Click **Apply**.



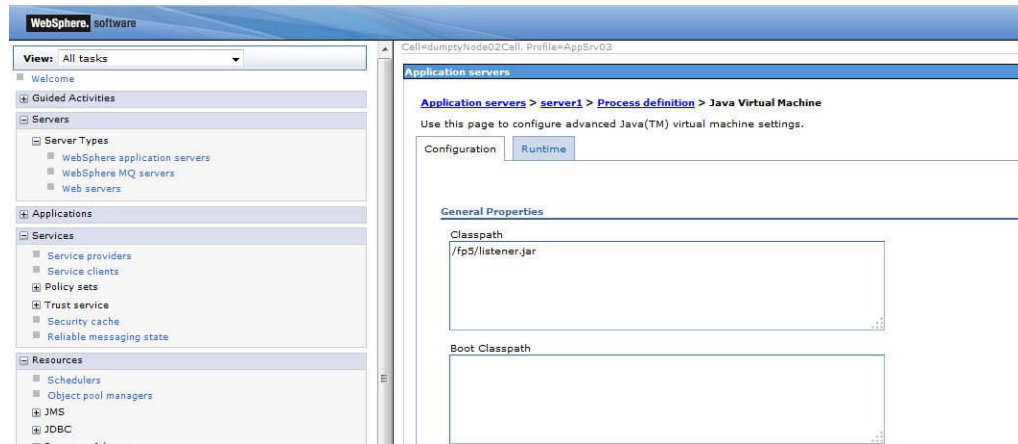
- Click the **Save** link to save the changes.
- For configuration please refer [ISRA Configuration](#) section.

## Mandatory Requirements for ISRA

The mandatory requirements for ISRA 3.4.0:

### Steps to include listener.jar and log4j-1.2.8.jar in the classpath of Application Server are:

- Find the listener.jar and log4j-1.2.8.jar in the path "<ISRA-home>\ISRA340\SystemManager\".
- Login to the WebSphere Administrative console.
- Navigate to **Servers > Server Types> WebSphere application servers** and select the server.
- Under Server Infrastructure, expand the link **Java and Process Management**, and click the **Process Definition** link.
- Under Additional Properties, click **Java Virtual Machine**.
- Include **listener.jar** and **log4j-1.2.8.jar** in the **Classpath**, as shown below:




---

**Note** If the operating system is Unix/Linux then you have to use colon (:) as a separator for each jar file path appended to the classpath text field and if it is Windows you have to use semicolon (;).

---

7. Include the folder in which **WinPerfMon.dll** is present in the system path in case of Windows operating system. In UNIX, this file is not required.
8. Enter the initial and maximum JVM heap size as 512.

**Explanation for Terminal name and ISRALock folder:**

The first instance of ISRA deployed on an Application Server creates a folder named "ISRALock" and a **file named** <sup>1</sup> "ISRALock.0" inside that folder. The counter "0" in the file name "ISRALock.0" increments subsequently with each new deployment of ISRA and the same is appended to the terminal name generated for an ISRA instance. This folder is created in the path resolved by the system property "user.dir", which is the same path where the ISRA logs are generated. This functionality has been introduced in ISRA 3.2.1 to support vertical cluster environment.

Terminal name identifies ISRA instance with a unique id so that IS can distinguish each ISRA client uniquely for communication. Earlier, the terminal name used to be of the form "SV<instance number>.<Counter1>@IPAddress". In case of a vertical cluster, ISRA can be deployed across the cluster on a single machine. But in such a scenario, all the managed server instances in a cluster will have the same ISRA instance deployed and will generate the same terminal name, as the "IPAddress" and "instance number" will be same for all the ISRA instances. The current format of a terminal name generated by ISRA is "R<instance number><Counter1><Counter2>@IPAddress", where Counter2 is the counter appended to the files created in the ISRALock folder as mentioned above. The files created in the ISRALock folder will be automatically removed if the managed servers are gracefully shut down (in case of proper JVM shutdown).

See [Configurable ra.xml properties](#) section below for "[DeploymentInstance](#)" [property setting](#).

---

<sup>1</sup> ISRALock.0 (0-9 and a-z) would be created in ISRA 3.4 FP3 and above. Prior versions of ISRA would have files created as ISRALock.0000 (0000-9999).

## 2. ISRA Configuration

This chapter describes how to configure ISRA on IBM WebSphere Application Server version 8.x, after it is deployed.

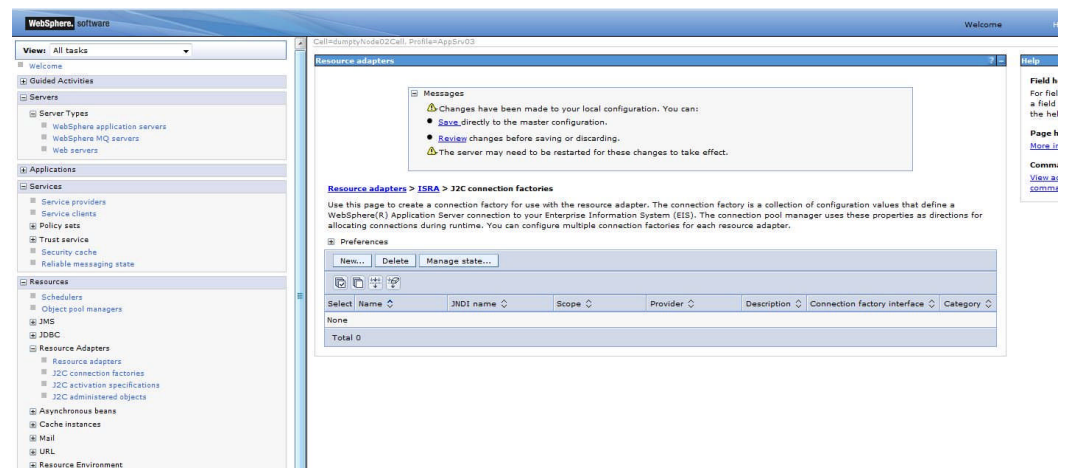
### Configuring Deployed ISRA

This section describes the procedure to edit ISRA deployment properties using the WebSphere Administrative Console.

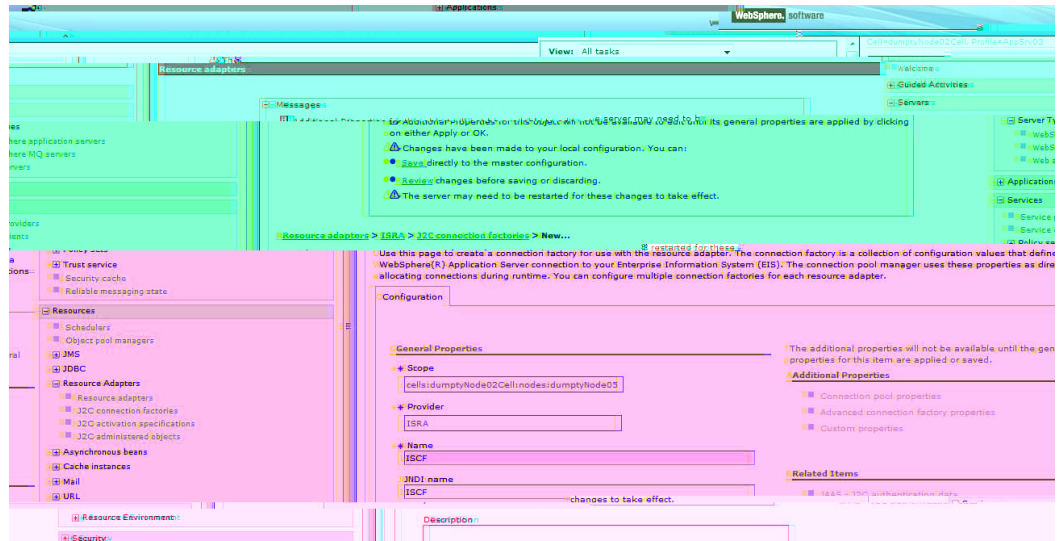
ISRA uses a deployment descriptor called **ra.xml** to define its operational parameters. The deployment descriptor is defined by Sun Microsystems in the J2EE Connector 1.0 specification. It describes the Resource Adapter related attributes, types, and its deployment properties using a standard Document Type Definition (DTD).

To edit the ISRA deployment descriptor:

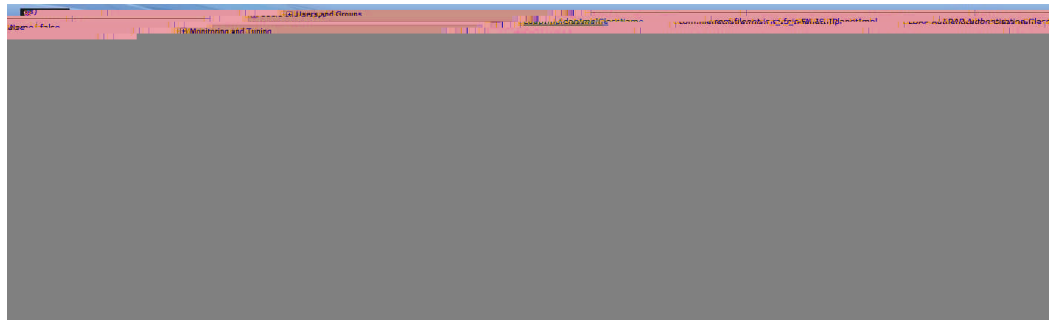
1. Launch a web browser window and login to the WebSphere Administrative Console or Network Deployment Administrative Console depending on whether ISRA is deployed in standalone or clustered environment.
2. Expand **Resources** node.
3. Click on the deployed ISRA to edit under the **Resource Adapters** node.
4. Click **J2C Connection Factories**. The following screen appears:



5. Click **New**. The following screen appears:



6. Provide a name for the Connection Factory. Provide the **JNDI name**, for example ISCF. Click **Apply**.
7. Click the **Save** link in the **Messages** box. The following screen appears
8. Click on **OK**. On successful creation of Connection Factory, the following screen appears:



## Changing ISRA Specific Parameters

After ISRA is deployed, some parameters of the Deployment Descriptor need to be changed to configure it for the target IS server.

To change ISRA specific parameters:

1. Navigate to **Resources> Resource Adapters> Resource Adapters**. The following screen appears:



6. To customize each parameter, click on the parameter name, modify and then save the changes. Refer to Configurable ra.xml properties section, for the details.

## Configurable ra.xml properties

---

**Note** Please note that all properties described in the deployment descriptor are mandatory and no property should be removed. Default values should be specified for properties that users do not want to use.

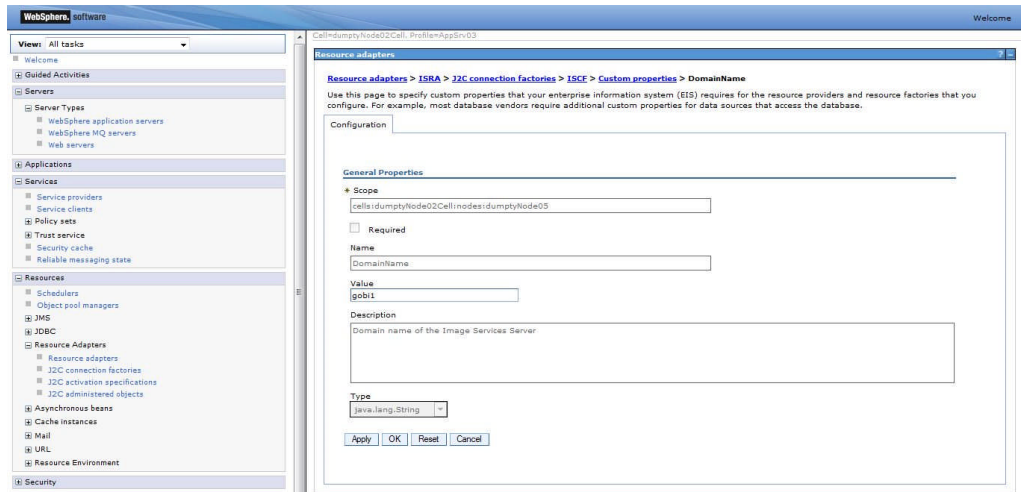
---

The configurable properties to be set (modified) in **ra.xml** are:

- [DomainName](#)
- [OrganizationName](#)
- [LoggingLevel](#)
- [LoggingMode](#)
- [PageBufferSize](#)
- [CacheRefreshInterval](#)
- [SecurityCacheMode](#)
- [MetaDataCacheRefreshMode](#)
- [LogFileName](#)
- [LogFileSize](#)
- [LdapImplClassName](#)
- [LdapImplClassString](#)
- [InherentLogin](#)
- [DeploymentInstance](#)
- [PCHLogging](#)
- [AllowAnonymousUser](#)
- [RPCLogging](#)
- [ClientCodepage](#)
- [GMTEnabled flag](#)
- [ISLocale](#)
- [IgnoreObjectBusyMsgInDocMigration](#)

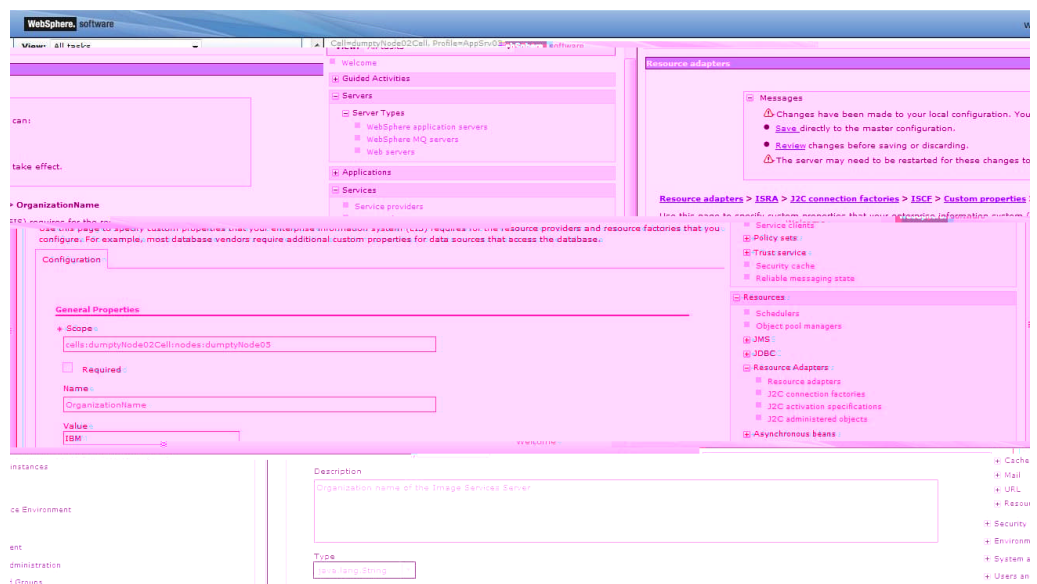
### DomainName

This is the name of the domain of the IS server. Click **DomainName**. The default value for DomainName is FileNetIS. It should be set according to the operational environment.



## OrganizationName

This is the FileNet IS organization name. The default value for OrganizationName is IBM. Click **OrganizationName** to change the value to the target IS server.



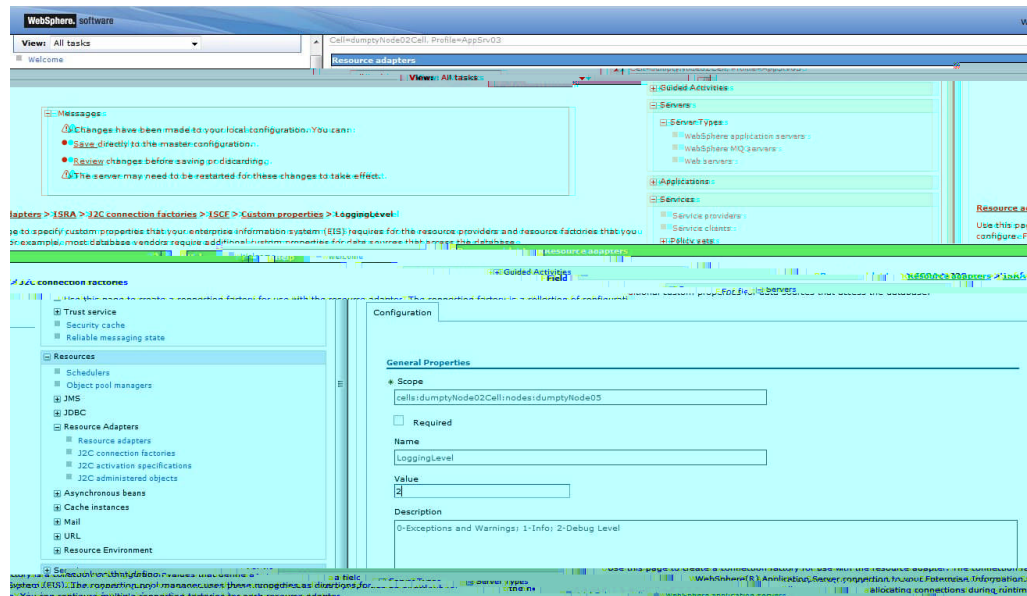
## LoggingLevel

This is an integer representing the amount of log information to be generated. The values are dynamically updatable by using the ISRA Console. The valid values are:

Logging Level	Description
-1	Disables ISRA Logging
0	Only Error and Warning messages will be logged by ISRA
1	Informative messages will also be logged by ISRA
2	Prints debug message in the log

Click **LoggingLevel** to change the value.

The default value of LoggingLevel is 0. It can be modified to other valid Logging Levels. It is recommended to keep the logging level to 0. LoggingLevel can be increased if user encounters a problem while accessing ISRA through the application.



## LoggingMode

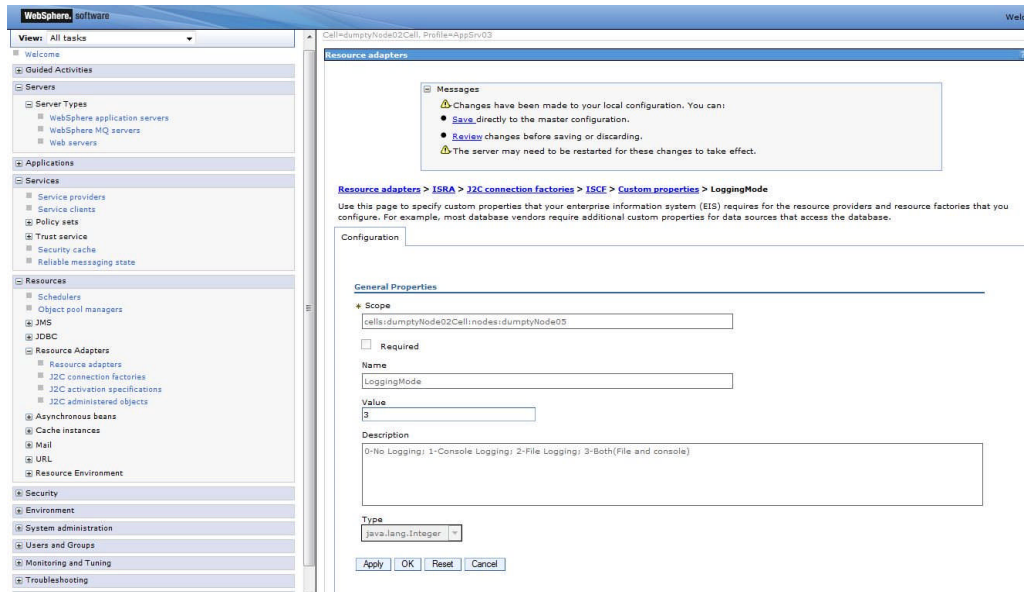
This is an integer representing the mode of logging. The valid values are:

Logging Level	Description
0	No Logging
1	Only console logging
2	Only file logging
3	Both console logging and file logging

Click **LoggingMode**.

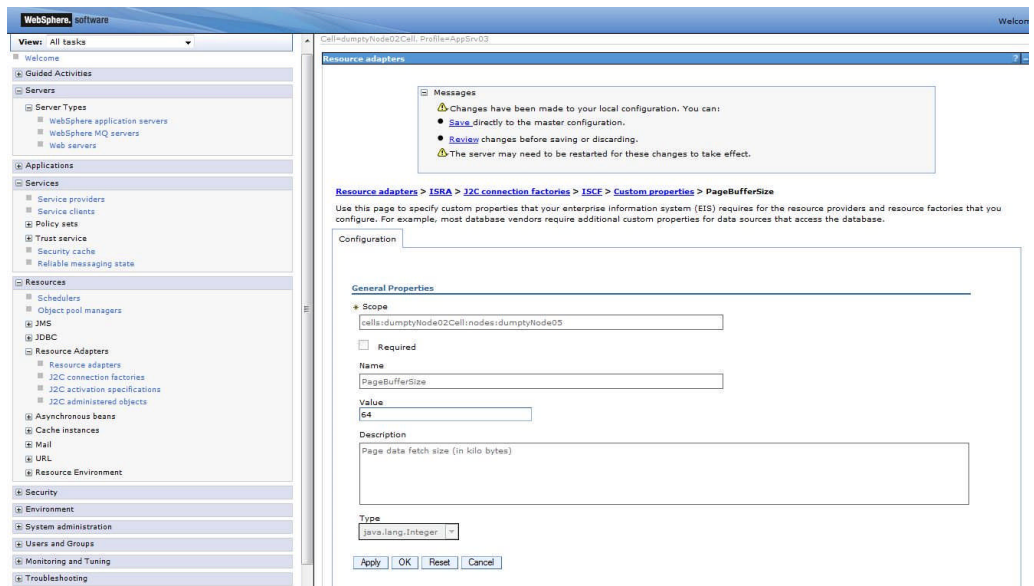
The default Value of LoggingMode is 3. It can be changed to other valid values according to the operational environment.





## PageBufferSize

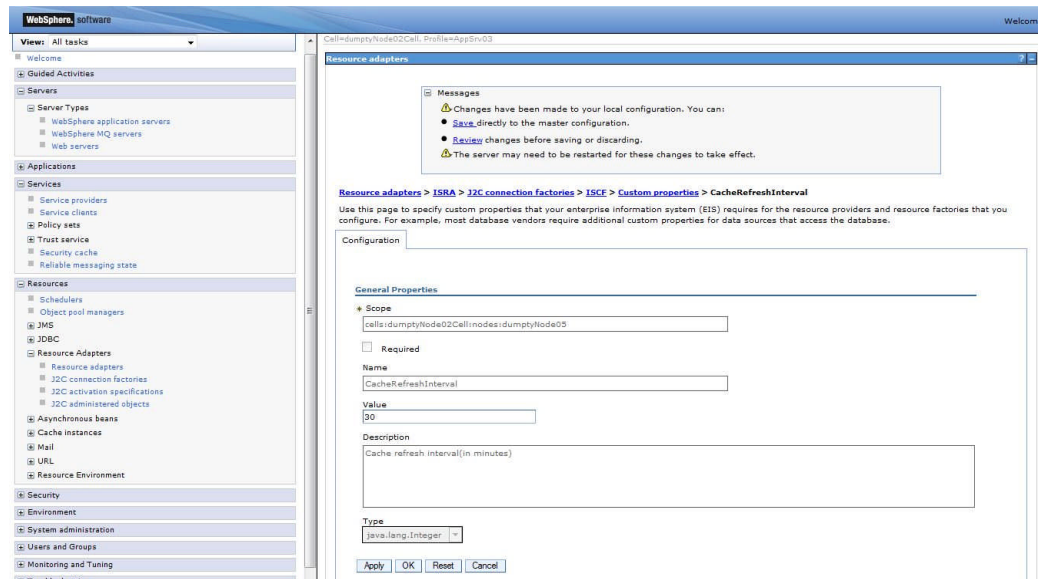
This is an integer value specified in kilobytes (KB). PageBufferSize specifies the chunk size that ISRA will use to transfer page data to and from IS. The default value is 64 KB. Specifying a higher value will require more memory for the Application Server process and a low PageBufferSize will mean more trips to IS. The value should be set to an average page size on the target IS. The document buffer size on IS and ISRA should match to optimize image transfer performance.



## CacheRefreshInterval

This is an integer value specified in minutes. ISRA stores meta-data information like Document class, Indices and menu details etc. in a local cache for faster retrieval. ISRA refreshes the cache information based on the

CacheRefreshInterval value. The default value is 30 minutes. Click **Apply** after modifying the property.



**Note** To configure ISRA for multiple IS servers; create a Connection Factory for each IS that you want to connect. DomainName and OrganizationName pair has to be distinct among the configured Connection Factories.

## SecurityCacheMode

This parameter can take two values:

<u>Value</u>	<u>Setting</u>
1	Caches both users and Groups
2	Caches only groups

## MetaDataCacheRefreshMode

This parameter can have a value in the range of (0-15).

<u>Value</u>	<u>Setting</u>
0	No Metadata cache refresh
1	Printer cache refresh only
2	Document class cache refresh only
4	Key Fields cache refresh only
8	Menu Value cache refresh only
15	is the default value for this parameter, which will refresh all metadata.

Add corresponding values to get a combination of data.

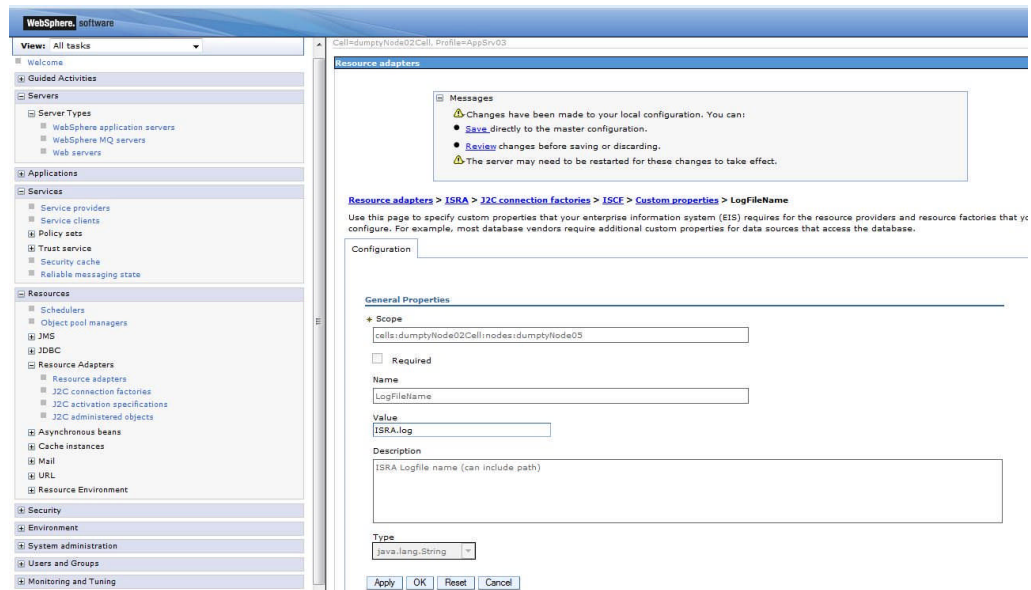
For example,  $1+2 = 3$  Printer and Document class data

1+2+4 = 7 Printer, Document class, Key Fields data

0+1+2+4+8 = 15 all data

## LogFileName

The LogFileName is a string containing the name and path of the log file. Click **LogFileName** to change the value. The default Value of LogFileName is **ISRA.log**. A complete or relative path can be provided to create the log file at a specific location on disk.



To ensure that each ISRA instance has a unique log file, the following steps will be followed:

- Configurable property “DeploymentInstance” will be read from ra.xml and appended to the log file name. If not specified, the default value “1” will be used as the deployment instance of ISRA.
- The unique ID used for terminal ID generation in ISRA will be appended to the log file name.

For instance, if the log file name configured in ra.xml is **ISRA.log** and the deployment instance is 1, the modified log file name would be **ISRA\_1\_0.log**. Here, “0-9 and a-z” is the unique ID<sup>2</sup> generated at run time. This ensures a unique name of the log file for each instance of ISRA.

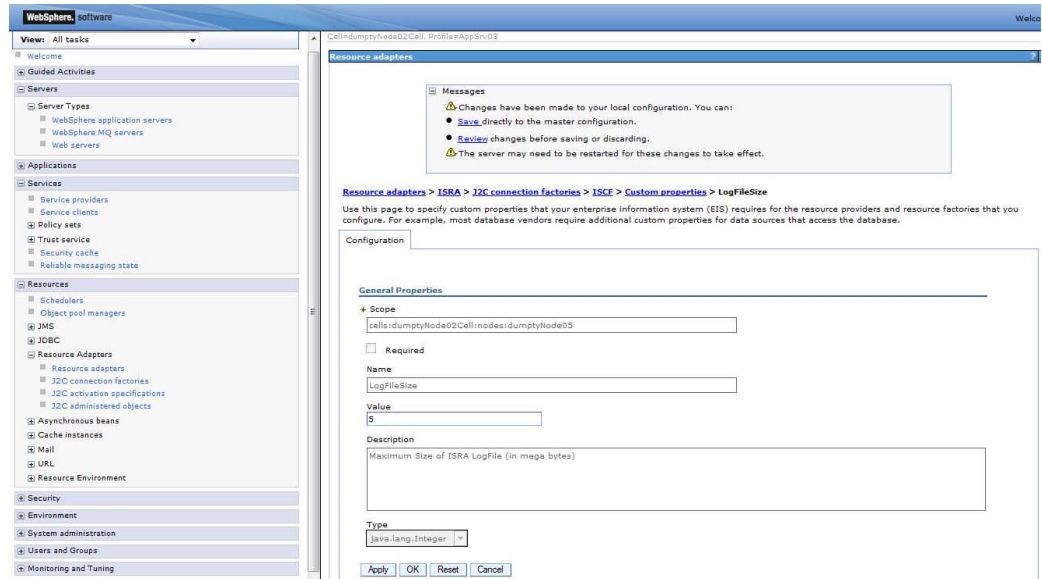
## LogFileSize

This is an integer representing the maximum size of the log file in Megabytes (MB). When the size of the file reaches this maximum limit, the log file is renamed, and a new file is created with the same name. For example, **ISRA\_1\_0.log** is renamed to **ISRA\_1\_0\_1.log**, and a new file **ISRA\_1\_0.log** is

---

<sup>2</sup> The modified log file name would be ISRA\_1\_<unique-ID>.log. The value for unique ID is 0-9, a-z in ISRA 3.4 FP3 and above. Older versions of ISRA use the unique ID value between 0000-9999.

created. The default value of LogFileSize is 5MB. Automatic purging of old ISRA log files has been implemented leaving behind only 5 latest versions.



## LdapImplClassName

It is the name of the Implementation class for LDAP Authentication. This parameter contains the complete path of the LDAP Implementation class to be entered along with the LDAP Implementation Class Name.

The default value is 'com.filenet.is.ra.fnis.FN\_IS\_IPlanetImpl'.

The value of the property for LDAP implementation for Active directory is com.filenet.is.ra.fnis.FN\_IS\_ActiveDirImpl and for Novell NDS is com.filenet.is.ra.fnis.FN\_IS\_NovellNDSImpl.

## LdapImplClassString

This parameter is a general string that takes in all the LDAP Server specific parameters required for authentication. It takes the following inputs:

- Server Name – Name of the Server/ Machine on which LDAP Server exists.

---

**Note** In case that the LDAP server is located on a different subnet, it may be necessary to enter IP address or a full domain name.

---

- Port Number – LDAP Server's port number used for transactions.
- User Path – Organization unit under which the users are filed in the LDAP Directory Server.

The three parameters must be separated by semicolon and must appear in the order - server name, port number and user path. An example of LdapImplClassString is:

- **For Active Directory**  
filenetserver;389;ADS.com

- **For IPlanet**

filenetserver;389;ou=ISRA, dc=odc, dc=filenet, dc=com

- **For Novell NDS**

filenetserver;389;ou= ISRA, ou=odc,ou=filenet,o=com

## InherentLogin

To use LDAP security, the value will be set to 1 from the default value 0.

## DeploymentInstance

This is the instance number of ISRA that is being deployed. It is a user defined number between 0 and 99. The default value for this parameter is 0 when none is specified. The maximum is 99, which means that 99 different instances of ISRA can be deployed in a WebSphere Application Server node.

Each deployment/JNDI of ISRA on the same Web/Application server requires its own instance number. For example, there can be 2 ISRA applications deployed on the same Web/Application server. Each deployment would require its own instance number and JNDI name. This number is used on the IS server to differentiate between multiple connections from the same IP address of the Web/Application server.

IS always expects unique IDs from ISRA clients, and when it receives duplicate IDs from ISRA, it will reject communication.

So it is always advised to increment the deployment instance number when another instance of ISRA is deployed to achieve its unique id.

Format of the terminal ID is used by ISRA and IS in distinguishing a Unique ISRA instance.

RXXYYYZ@<ip-address>

Where,

XX = takes values from 0 to 99. If there is only one instance then it defaults to 0. Else the value has to be set to the Number of Deployment instances.

YYY = Counter that increments with the creation of a new LogonSession object (Values in base 36)

Z = Unique ID generated per ISRA instance. Introduced to support ISRA in clustered environment (Unique ID is a number in Base 36)

<ip-address> = IP Address of the machine where ISRA is deployed.

The Unique ID is obtained from the place holder file ISRALock.z (where Z=Unique ID) that is created in the ISRALock folder. Each cluster member creates its own place holder file (like ISRALock.0, ISRALock.1 and so on) within the common ISRALock folder.

WebSphere, software

View: All tasks

Cell: dumptyNode02Cell, Profile: AppSrv03

Resource adapters

Messages

- Changes have been made to your local configuration. You can:
  - Save directly to the master configuration.
  - Review changes before saving or discarding.
- The server may need to be restarted for these changes to take effect.

Resource adapters > ISRA > J2C connection factories > ISCF > Custom properties > DeploymentInstance

Use this page to specify custom properties that your enterprise information system (EIS) requires for the resource providers and resource factories that you configure. For example, most database vendors require additional custom properties for data sources that access the database.

Configuration

General Properties

Scope

cells:dumptyNode02Cell:nodes:dumptyNode05

Required

Name

DeploymentInstance

Value

0

Description

ISRA instance that is currently being deployed on a single machine: Min Value = 0, Max Value = 99

Type

java.lang.Integer

Apply OK Reset Cancel

## PCHLogging

This is a String parameter to enable/disable PCH logging in ISRA. The default value for this is "Disabled". PCHLogging enables user to log performance monitoring data of IS.

PCHLogging	Description
Enabled	Enables the PCHLogging
Disabled	Disables the PCHLogging, this is the default value.

WebSphere, software

View: All tasks

Cell: dumptyNode02Cell, Profile: AppSrv03

Resource adapters

Messages

- Changes have been made to your local configuration. You can:
  - Save directly to the master configuration.
  - Review changes before saving or discarding.
- The server may need to be restarted for these changes to take effect.

Resource adapters > ISRA > J2C connection factories > ISCF > Custom properties > PCHLogging

Use this page to specify custom properties that your enterprise information system (EIS) requires for the resource providers and resource factories that you configure. For example, most database vendors require additional custom properties for data sources that access the database.

Configuration

General Properties

Scope

cells:dumptyNode02Cell:nodes:dumptyNode05

Required

Name

PCHLogging

Value

Disabled

Description

Parameter to enable PCH Logging in ISRA

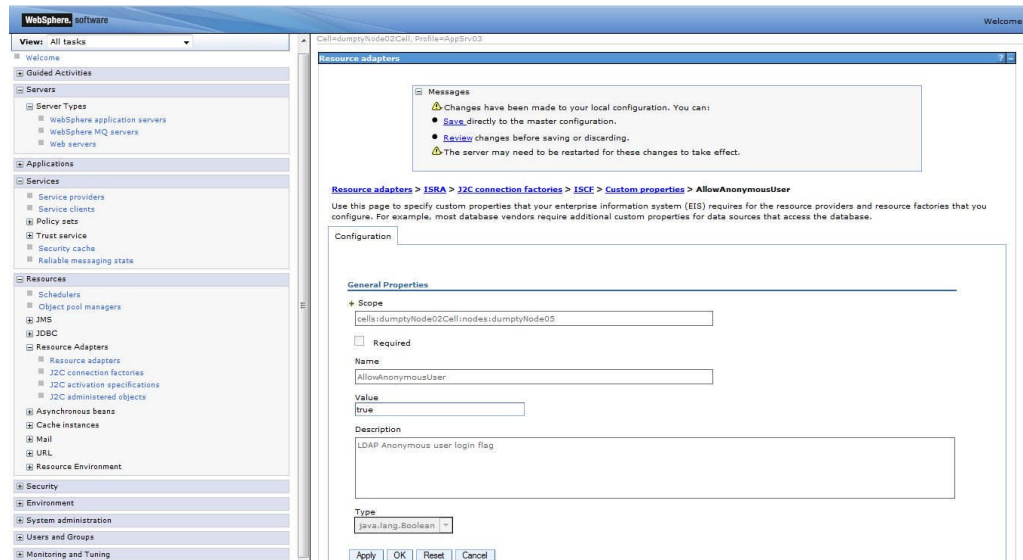
Type

java.lang.String

Apply OK Reset Cancel

## AllowAnonymousUser

It's a Boolean value to allow Anonymous user logon through LDAP, when blank password is passed from user/client. The default value of this parameter is "false".



## RPCLogging

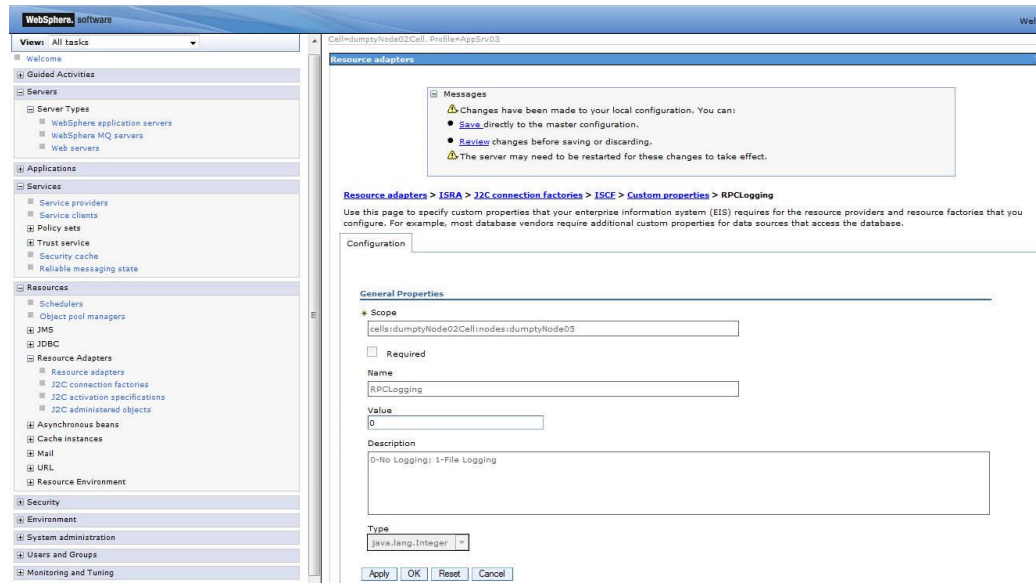
This is an integer representing the RPC logging level. The valid values are:

RPCLogging	Description
0	No Logging
1	File Logging

The default Value of RPCLogging parameter is 0. It can be changed to 1 if RPC Logging is required.

The RPC LogFileSize is taken as double the size of that of ISRA LogFileSize. So, when the size of the RPC log file reaches its maximum limit (10mb), the log file is renamed, and a new file is created with the same name. For example, ISRA\_1\_0\_RPC.log is renamed to ISRA\_1\_0\_RPC\_1.log, and a new file ISRA\_1\_0\_RPC.log is created. Automatic purging of old ISRA RPC log files has been implemented leaving behind only 5 latest versions.





## ClientCodepage

This is the code page for encoding Text and Sticky Note annotations. The default value of this property is Cp1252.

On Microsoft Windows platform, the Locale character set is the Windows Code Page (1252 for US English and Western Europe) whereas on a UNIX platform, it is an ISO 8859-X character set (ISO 8859-1 for US English and Western Europe).

Thus, if the client locale character set, is Windows Code Page based (for example: Cp1252 for US English and Western Europe), and the server is UNIX based, then Windows Code Page should be used for encoding the annotations data before committing to the server. This is because; there is an inconsistency in characters mapping between Microsoft Windows Code Pages and the equivalent ISO 8859-X series. For instance, Code page 1252 is built on ISO 8859-1 but uses the range 0x80-0x9F for extra printable characters rather than the C1 control codes used in ISO8859-1.

For Annotations data, ISRA internally retrieves the IS character set and uses the equivalent Windows Code Pages for the following ISO encodings:

ISO Encoding	MS Windows counterpart
ISO8859_1	<b>Cp1252</b>
ISO8859_2	<b>Cp1250</b>
ISO8859_5	<b>Cp1251</b>
ISO8859_6	<b>Cp1256</b>
ISO8859_7	<b>Cp1253</b>
ISO8859_8	<b>Cp1255</b>
ISO8859_9	<b>Cp1254</b>



ISO Encoding	MS Windows counterpart
ISO8859_13	Cp1257

---

**Note** Specifying an incorrect code page may lead to inconsistency and/or corruption of Annotations data.

---

## GMTEnabled flag

This parameter takes two values:

1. true
2. false

The default value of this parameter is false.

**Setting “GMTEnabled” to false:** When the flag is set to false, it is assumed that the ISRA client application is not “GMT Enabled” i.e. client applications will not do any timezone conversion. ISRA returns the date committed on the IS to client applications after adjusting the difference between the Application Server timezone and the GMT Timezone. As a result, the dates displayed in applications will be in accordance with the dates committed on the IS.

**Setting “GMTEnabled” to true:** When the flag is set to true, it is assumed that the client application is “GMT Enabled” i.e. client applications will display the dates in GMT. In this case, ISRA returns the date committed on the IS in the GMT timezone, without any adjustment. Set this value to true only if you have made changes to your application after of an upgrade to ISRA 3.3 FP6 or ISRA 3.4 FP2.

## ISLocale

This is a String parameter which represents the ISRA Locale. The administrator can set the value of this configurable property as that of the IS locale. It is a lower-case two-letter code as defined by ISO-639. The default value of this parameter is “en” (English locale). The ResourceBundle used in ISRA will depend on the value set by the user for this property.

## IgnoreObjectBusyMsgInDocMigration

This is a Boolean parameter which can be set to true to ignore the [77,0,11 The object is busy] error, incase of DocMigration. The default value for this parameter is false.

## Configuring WebSphere-Specific Parameters

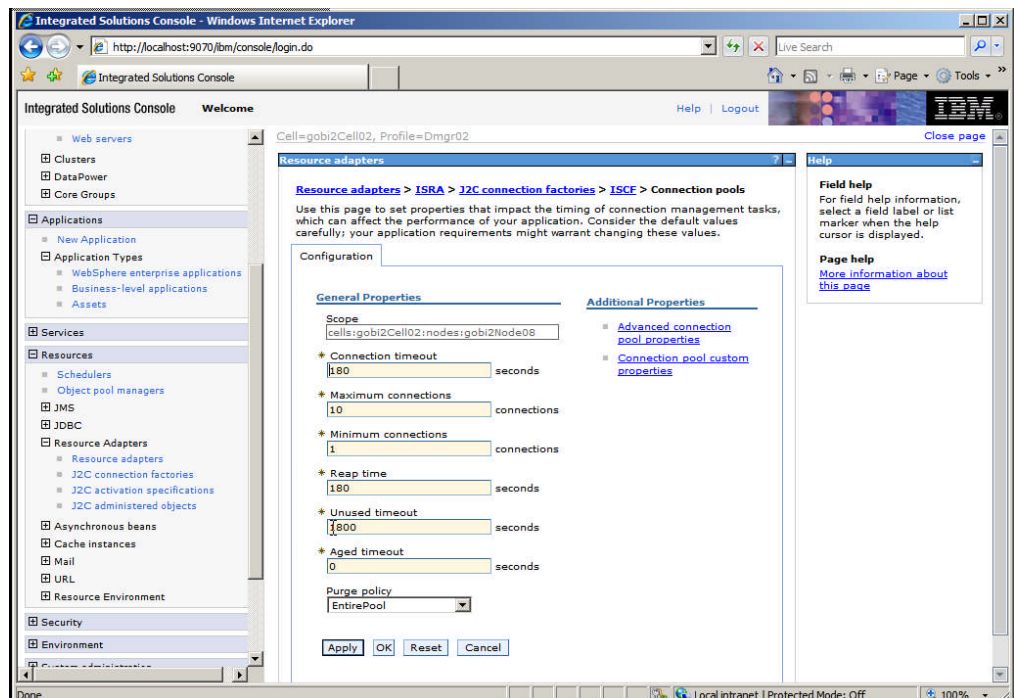
Once the configurable properties are set for ISRA, the Application Server-specific parameters need to be configured. In case of WebSphere server, the properties that need to be specified are:

- Connection Timeout
- Maximum Connections
- Minimum Connections
- Reap Time

- Unused Timeout
- Aged Timeout
- Purge Policy

The steps to configure these properties are:

1. Navigate to Resources > Resource Adapters > ISRA > J2C Connection Factories > ConnectionFactoryName (ISCF) > Connection Pool Properties.
2. Set the **Connection timeout, Maximum connections, Minimum connections, Reap time, Unused timeout, Aged timeout and Purge policy**.



A description of each attribute is given below:

- **Connection Timeout:** Defines the time (in seconds) that the Pool Manager waits after reaching the maximum number of connections to abort and throw a ResourceAllocationException. If the maximum number of connections is not reached or is set to zero (0), the Connection Timeout will not be used.  
If the Connection Timeout is zero (0), the Pool Manager will wait indefinitely.
- **Maximum Connections:** Represents maximum number of Managed Connections that can be created by the ManagedConnectionFactory. After this number is reached, no new connections are created, and the requester waits for the Connection Timeout or a ResourceAllocationException to be thrown. If Maximum Connections is set to zero (0), then the number of connections can grow indefinitely. Maximum Connections must be greater than or equal to Minimum Connections.
- **Minimum Connections:** Represents minimum number of Managed Connections maintained by the Application Server. If this number is reached, the garbage collector will not discard any Managed Connections. If the actual number of connections is lower than the value specified by the minimum connections settings, no attempt will be made to increase the number of

connections to the minimum value. Minimum Connections must be less than or equal to Maximum Connections. Set this value to 0 for ISRA.

- **Reap Time:** Represents the time (in seconds) after which the garbage collector runs. The garbage collector discards all unused connections for the value specified by the **Unused timeout**.
- **Unused timeout:** Represents the time (in seconds) after which an unused connection is discarded. If this value is set to 0 the garbage collector is disabled.
- **Aged timeout:** Specifies the interval (in seconds) after which an unused, aged connection is discarded. Set the **Aged timeout** value higher than the **Reap timeout** value for optimal performance
- **Purge Policy:** Specifies how to purge connections when a stale connection or fatal connection error is detected. If user sets the purge policy for this data source object to EntirePool, all connections in the pool are marked stale. Any connection not in use is immediately closed. If user sets the purge policy for this data source object to FailingConnectionOnly, only the connection that caused the StateConnectionException is closed.

---

**Note** It is recommended that user should set the values of the **Reap Time** and **Unused timeout** to ensure that WebSphere and ISRA free the unused IS server resources. The actual values of these parameters depend on the application scenario. But in general, they should be set to a low value to free the IS resources. For Example, set **Unused timeout** to 1800 seconds (30 minutes) and **Reap time** to 120 Seconds (2 minutes).

---

## Configuring Multiple IS Server with ISRA

To configure ISRA for accessing multiple IS servers, create a Connection Factory for each IS that user wants to connect.

The following screen shows Connection Factories configured for multiple IS servers:

The screenshot displays the WebSphere Administration Console interface. On the left is a navigation tree with categories like Welcome, Guided Activities, Servers, Applications, Jobs, Services, Resources, Security, Environment, System administration, Users and Groups, Monitoring and Tuning, Troubleshooting, Service integration, and UDDI. The 'Resources' category is expanded, showing sub-items like Schedulers, Object pool managers, JMS, JDBC, Resource Adapters, and J2C connection factories. The main panel shows the 'Resource adapters' page, specifically the 'J2C connection factories' section. A message box at the top indicates that changes have been made to the local configuration and provides options to save directly, review changes, or synchronize across multiple nodes. Below this, a table lists the configured connection factories:

Select	Name	JNDI name	Scope	Provider	Description	Connection factory interface	Category
<input type="checkbox"/>	ISCF	ISCF	Node=dumptyNode07	ISRA		javax.resource.cci.ConnectionFactory	
<input type="checkbox"/>	ISCF1	ISCF1	Node=dumptyNode07	ISRA		javax.resource.cci.ConnectionFactory	
Total 2							

## 3. Configuring and Deploying ISRA Console and Sample Application

### ISRA Console

The LoadISRA utility from ISRA 3.4.0 has now been replaced with the ISRA Console (in ISRA 3.4 Fix pack 1 and above). This ISRA console has been developed to show the ra.xml properties in a well formatted table and also features buttons to enable/disable/edit logging levels dynamically.

The dynamic update of logging allows the user to enable and change logging levels while the ISRA is running and without needing to restart the appserver. The console also features links to launch Sample Application and to view JVM statistics.

This console is available as a Web Module (ISRAConsole.war) within ISRAConsole.ear and gets deployed automatically during the deployment of ISRAConsole.ear

#### **Resource Adapter class loading in Websphere Application Server and jndiISRA.properties:**

WebSphere Application Server by design does not load the adapter classes immediately on application server restart. The classes are loaded only after a user logs in using ISRA the first time after restart.

Upon loading of the classes, ISRA Security cache gets created, to load IS users into ISRA memory.

In ISRA 3.4 Fix pack 1, new properties file - jndiISRA.properties has been introduced, where the user can mention the JNDI names of the ISRA Connection Factories. Those mentioned in the properties file will get loaded automatically upon WAS application server restart.

### Configuring Sample Application

The ISRA console and Sample Application are packaged within a single Enterprise Application Archive File (**ISRAConsole.ear**).

**ISRAConsole.ear** consists of:

- Two Web modules:
  - ISRASampleWEB.war (ISRA Sample Application)
  - ISRAConsole.war (ISRA Console)
- Deployment Descriptor (application.xml)

This chapter illustrates the deployment and configuration of the ISRA Console and Sample Application on IBM WebSphere Server 8.x in a managed environment.

---

**Note** ISRA product media comes with an IBM FileNet Image Viewer, which can be used to display the TIFF, JPEG, BMP, and other supported file formats on a Java-enabled browser.

This Sample Application is intended solely for illustrative purposes and it should not be expected to perform useful work, or be used for production deployment. This Sample Application is to be used strictly as reference material.

---

It is assumed that ISRA is deployed and configured for the target IS.

In ISRA 3.4 fix pack 1, a new properties file "jndiISRA.properties" has been introduced and it gets created in Application Server home directory. The JNDI names of connection factories mentioned in this properties file, which will be used by Sample application to display on the login page. Two JNDI names "ISCF" and "ISCF1" are mentioned in the file by default. Additional library names can be included by providing comma separated entries. The property file is mandatory and it should contain the same names as the JNDI Binding Paths specified for the configured ISRA ConnectionFactories.

For configuring Sample application, certain properties need to be updated in the web.xml of the **ISRASampleWEB.war**.

Follow the below steps for extracting **web.xml** from **ISRASampleWEB.war**.

1. Use the jar binary from <WAS\_HOME>\java\bin to extract the ISRAConsole.ear and the ISRASampleWEB.war.
2. Open a Command window/Commandline Console/Terminal Window and cd to <ISRA-home>\ISRA340\Sample and run:
  - a. mkdir tmp1
  - b. copy ISRAConsole.ear tmp1
  - c. cd tmp1
  - d. "<WAS\_HOME>\java\bin\jar" -xvf ISRAConsole.ear
  - e. mkdir tmp2
  - f. copy ISRASampleWEB.war tmp2
  - g. cd tmp2
  - h. "<WAS\_HOME>\java\bin\jar" -xvf ISRASampleWEB.war
3. Open the file <ISRA-home>\ISRA340\Sample\tmp1\tmp2\WEB-INF\web.xml in an editor.
4. To enable extended annotation functionality modify the following parameters in **web.xml**:
  - a. Change env-entry-value for "DOCCLASSNAME" to the document class configured in the IS for digital signatures.  
`<env-entry-value>digDocClass</env-entry-value>`
  - b. Change env-entry-value for "MAXROWS" to the number of records to be fetched from the given document class.  
`<env-entry-value>200</env-entry-value>`
5. To enable Remote Printing functionality modify the following parameters in **web.xml**:

- a. Change env-entry-value for "USEPRINTVIEWOPTION" to either Yes or No. This value will determine whether to honor the print/view preference set in the **web.xml** or to take the value returned by ViewOne. Default value is No.

```
<env-entry-value>No</env-entry-value>
```

- b. Change env-entry-value for "PRINTVIEWOPTION" to either View Only =1, Print Only =2, Print/View =3. This value indicates the value of Print/View. The default value is 3.

```
<env-entry-value>3</env-entry-value>
```

---

**Note** If the PRINTVIEWOPTION is set to 3 (default) then the sticky note would be saved as a normal sticky note. If PRINTVIEWOPTION value is specified as 1 or 2 then the annotations will be saved as an extended annotation (**Extended annotations** are non-standard annotations which are saved with a class name parameter (F\_CLASSNAME) of "Proprietary", a class id property (CLASS\_ID) of {A91E5DF2-6B7B-11D1-B6D7-00609705F027} and a subclass name property (F\_SUBCLASS) that describes the annotation).

The value of PRINTVIEWOPTION would be honored for each sticky note individually, and not for all the sticky notes on a document as a whole.

Thus, the setting for PRINTVIEWOPTION would be processed for either a new annotation being added or an existing annotation being modified.

---

6. The Sample Application uses the crimson implementation of DocumentBuilderFactory class to implement the Remote Printing functionality. IBM WebSphere Application Server does not provide the crimson implementation of DocumentBuilderFactory class.

Hence, if Remote Printing functionality is desired, do the following steps to bundle crimson.jar with the Sample Application:

- a. Open the link <http://xml.apache.org/dist/crimson/> in a web browser.
  - b. Download the file crimson-1.1.3-bin.zip.
  - c. Extract all the files from crimson-1.1.3-bin.zip in C:\ (or any local drive). Crimson.jar can be located under the "C:\crimson-1.1.3\" folder.
  - d. Bundle crimson.jar within "WEB-INF\lib" directory of ISRASampleWEB.war.
7. Use the jar binary from <WAS\_HOME>\java\bin to rebuild the ISRAConsole.ear and the ISRASampleWEB.war.
  8. If not already open, open a Command window/Commandline Console/Terminal Window and cd to <ISRAhome>\ISRA340\Sample\tmp1\tmp2 and run:  

```
<ISRAhome>\ISRA340\Sample\tmp1\tmp2 and run:
```

    - a. del ISRASampleWEB.war
    - b. "<WAS\_HOME>\java\bin\jar" -cvf ISRASampleWEB.war \*
    - c. copy ISRASampleWEB.war ..
    - d. Enter y to overwrite the old ISRASampleWEB.war
    - e. cd ..
    - f. del ISRAConsole.ear
    - g. rmdir /S /Q tmp2 (In Windows 2012 PowerShell, use only rmdir tmp2)
    - h. "<WAS\_HOME>\java\bin\jar" -cvf ISRAConsole.ear \*

- i. copy ISRAConsole.ear ..
- j. Enter y to overwrite the old ISRAConsole.ear
- k. cd ..
- l. rmdir /S /Q tmp1 (In Windows 2012 PowerShell, use only rmdir tmp1)

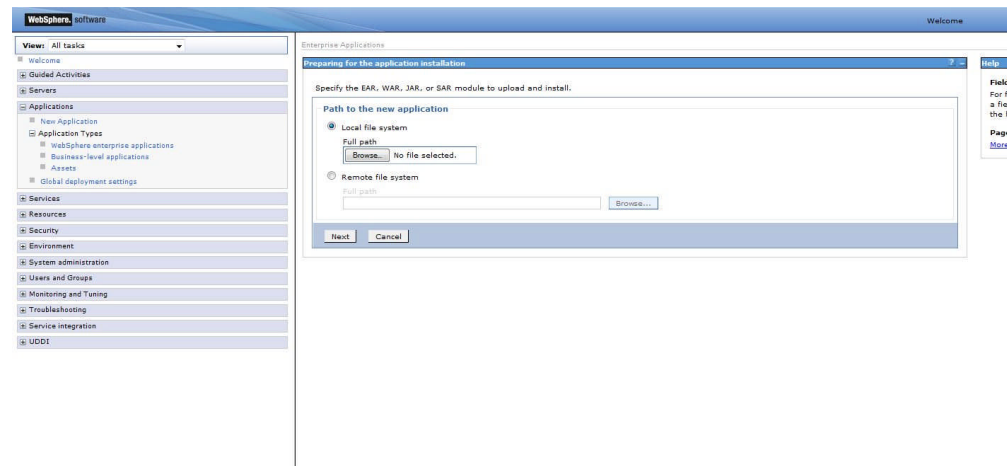
## Deploying ISRA Console and Sample Application in Standalone Environment

This section describes how to deploy the ISRA Console and Sample Application on a WebSphere Server to access ISRA in a Standalone environment.

It is deployed through the WebSphere Network Manager Administrative console. The steps to deploy are:

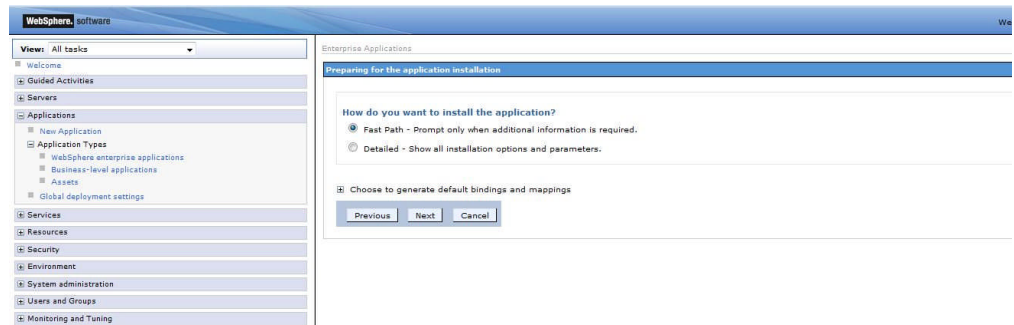
1. Start the WebSphere First Steps. Login as the root user, change directory to /<Webpsphere home>/AppServer/profiles/default/firststeps and execute the firststeps.sh script, as follows:  

```
# cd /<Webpsphere home>/AppServer/ profiles/default/firststeps
# ./firststeps.sh
```
2. Login to the WebSphere Administrative console
3. Click **Applications > Application Types> WebSphere Enterprise Applications> Install**. The following screen appears:

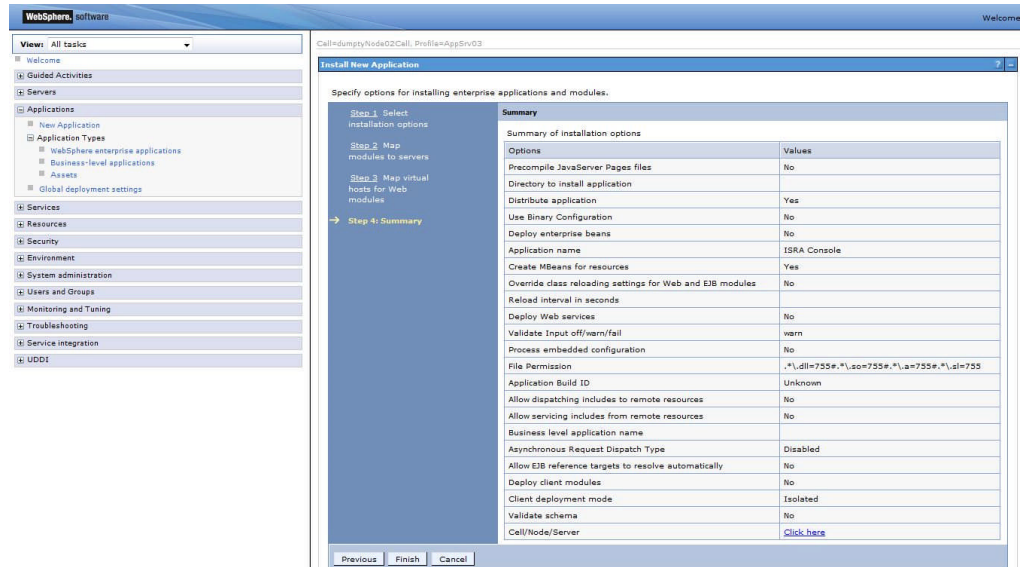


4. Click **Browse** to locate the **ISRAConsole.ear** and deploy the Console and Sample Application in the target environment. Also, specify a name for the Application, the default name is ISRA Console.
5. Click **Next**. The following screen appears.

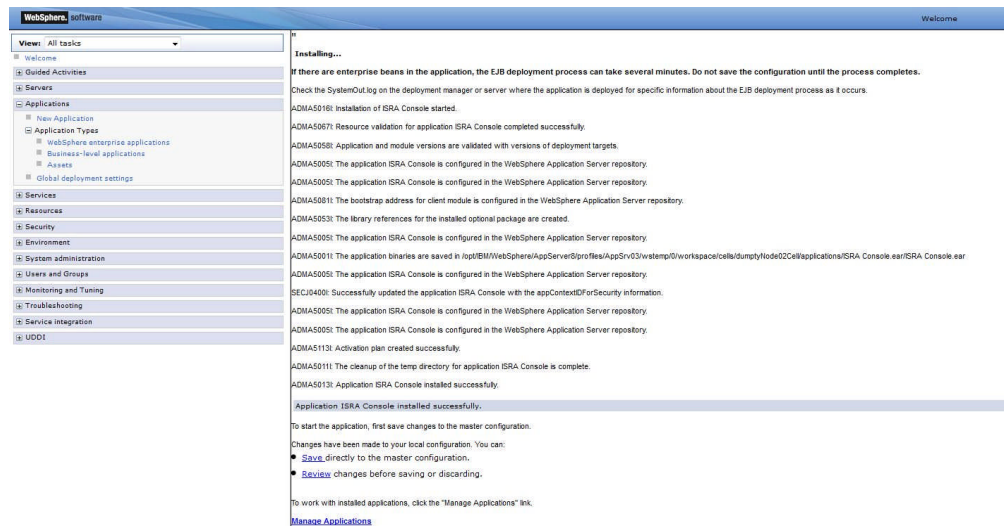




6. Click **Next** until the **Summary** screen appears.

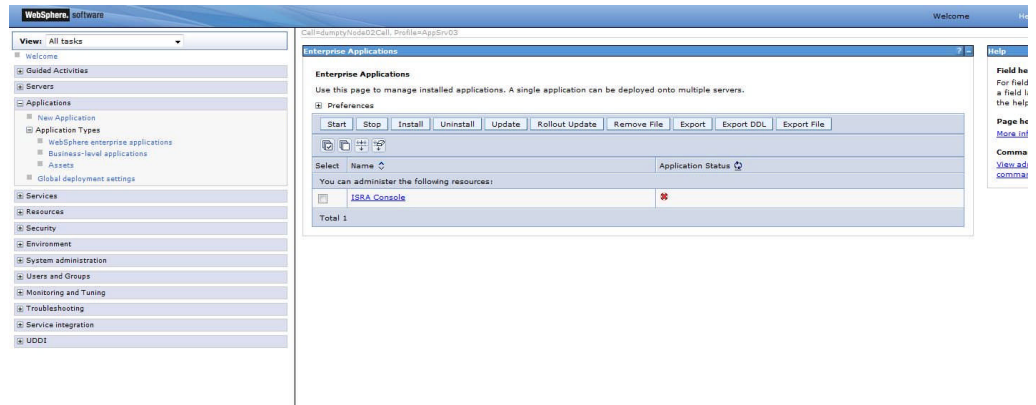


7. Click **Finish**. The following screen appears:

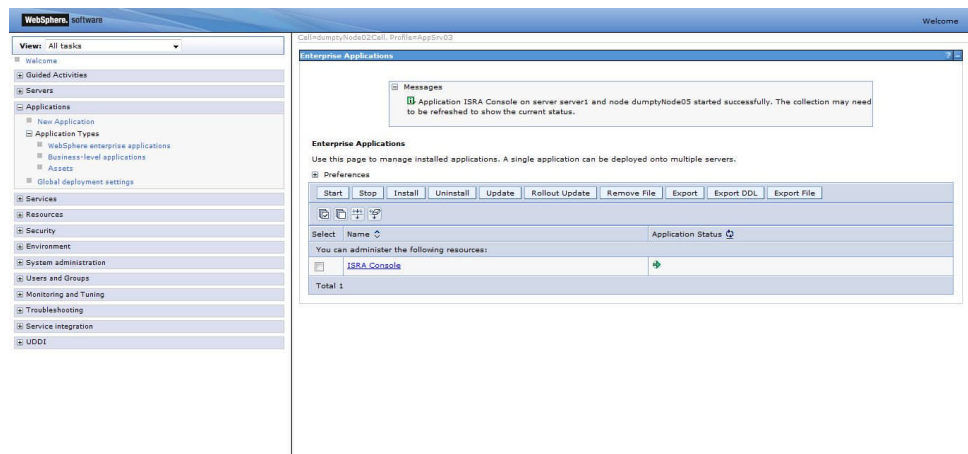


8. Click on the **Save** (directly to the master configuration) link. The following screen appears:





9. Click **Applications> Application Types> WebSphere Enterprise Applications**. Check the ISRA console and click **Start**. A message as shown in the screen below, appears:



## Deploying ISRA Console and Sample Application in a Clustered Environment

This section describes how to deploy the ISRA Console and Sample Application on WebSphere Server to access ISRA in a Clustered environment.

---

**Note** The Console and sample Application must be deployed on an environment where session affinity is enabled.

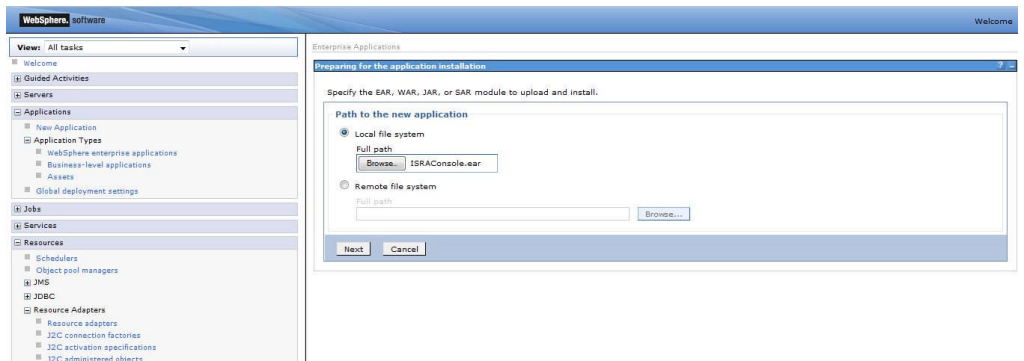
---

The ISRA Console and Sample Application is deployed through the WebSphere Network Manager Admin console. The steps to deploy are:

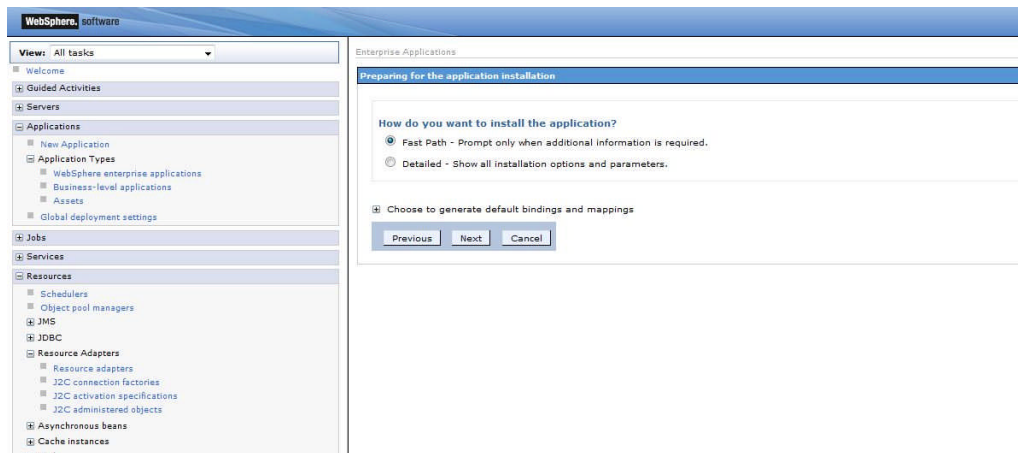
1. Start the WebSphere First Steps. Login as the root user, change directory to `<DeploymentManager home>/profiles/dmgr/firststeps` and execute the `firststeps.sh` script, as follows:
 

```
# cd <DeploymentManager home>/profiles/dmgr/firststeps
# ./firststeps.sh
```
2. Login to the WebSphere Network Manager admin console.

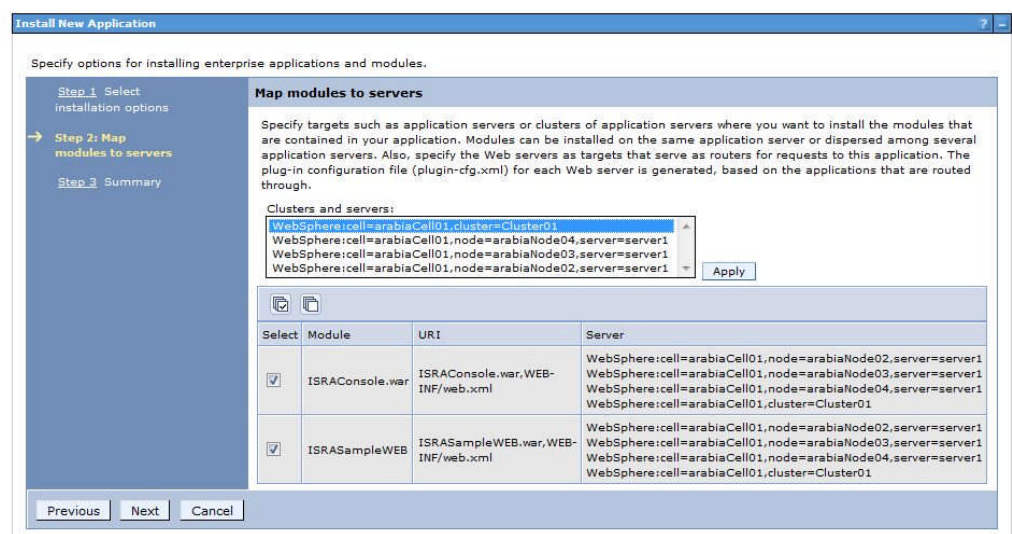
3. Click **Applications> Application Types> WebSphere Enterprise Applications> Install**. The following screen appears:



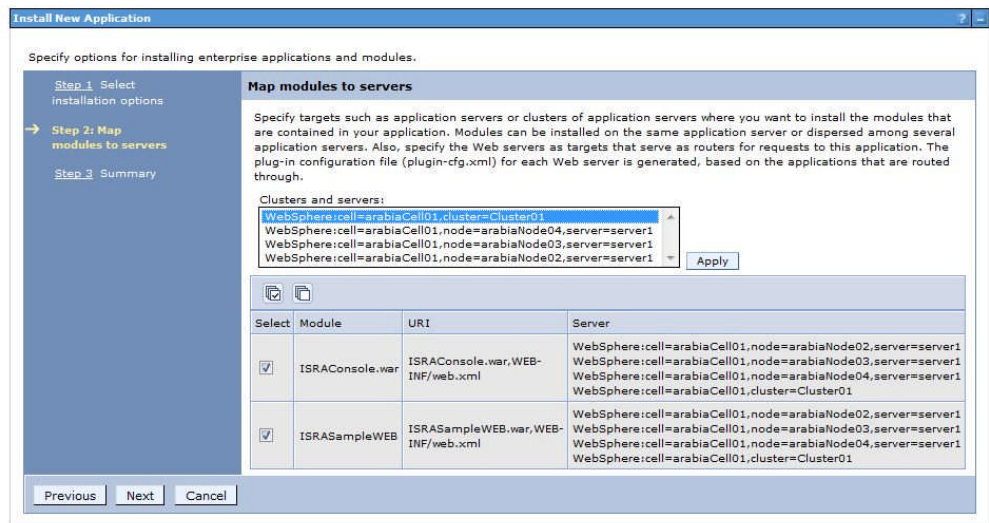
4. Click **Browse** to locate the **ISRAConsole.ear** and deploy the Console and Sample Application in the target environment.
5. Click **Next**. The following screen appears:



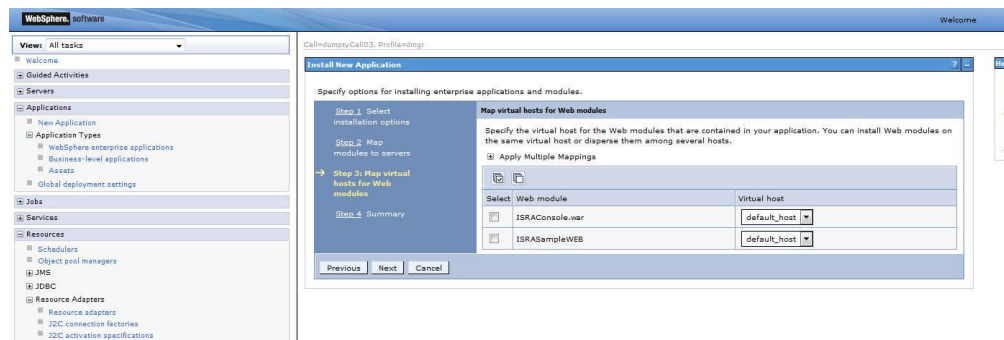
6. Click **Next**. The following screen appears:



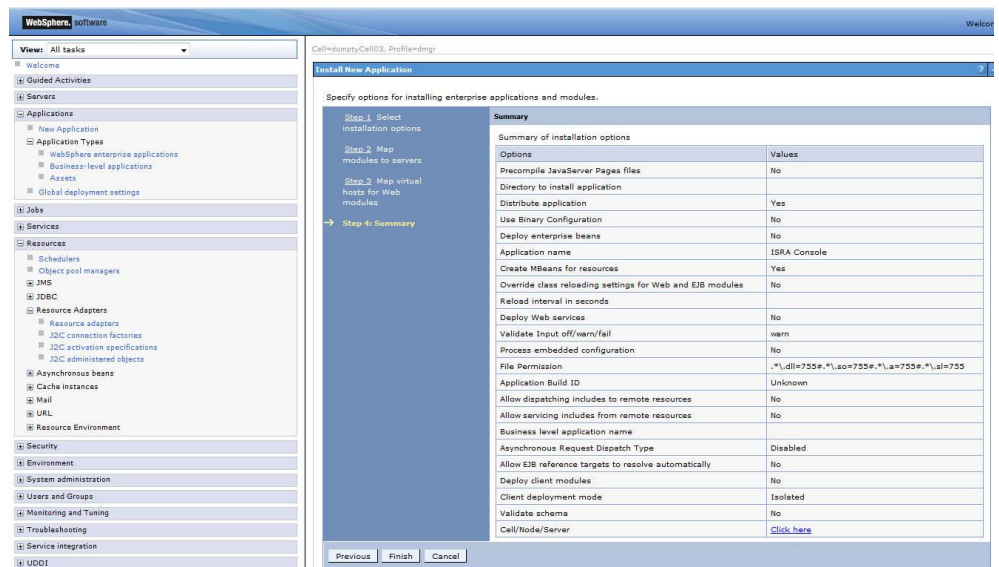
7. Check correct boxes and Click **Next**. The following screen appears:



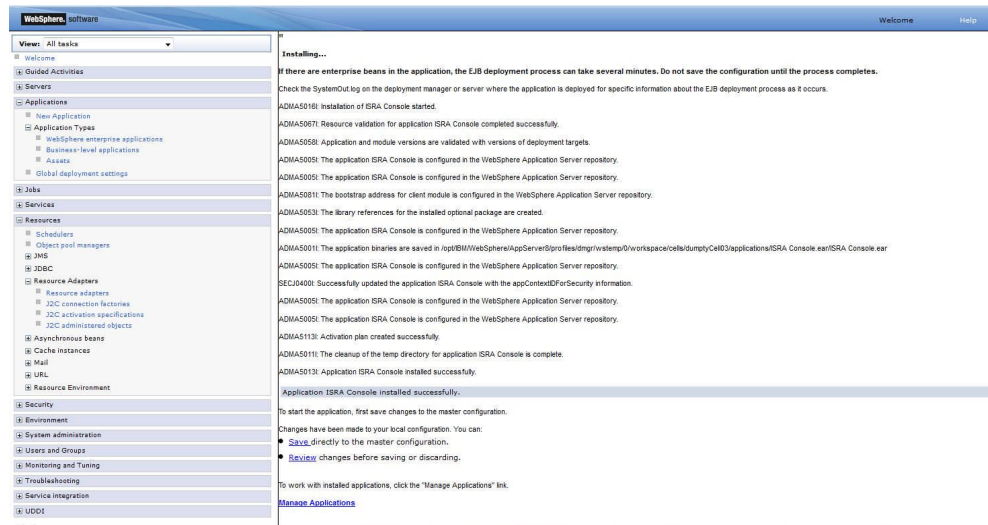
8. Select the Cluster/Server from “Clusters and Servers” list and check the module. Click **Next**. The following screen appears:



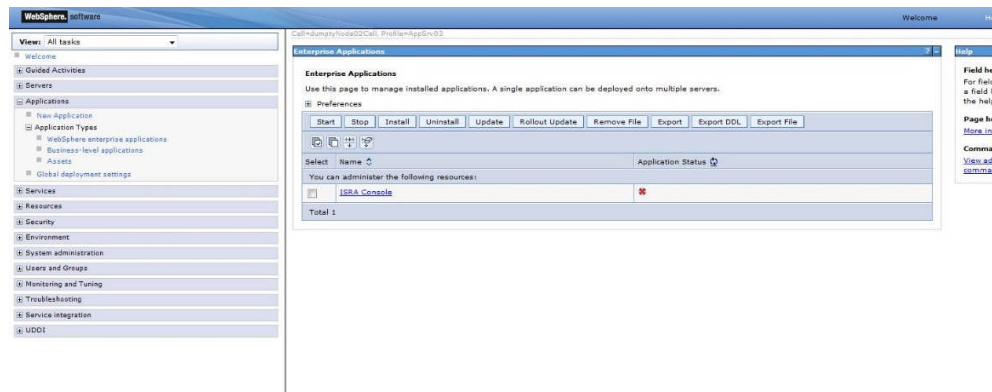
9. Click **Next**. The Summary screen appears.



10. Click **Finish**. The following screen appears:

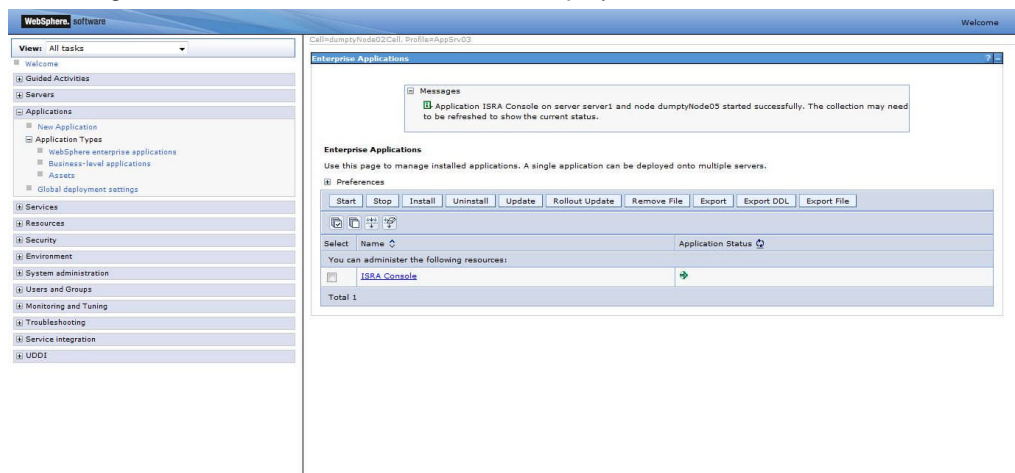


11. Click on the **Save**.



12. Click **Applications> Application Types> WebSphere Enterprise Applications**. Select **ISRA Console** and click **Start**, ISRA Console and Sample application will get started.

13. A message, as shown in the screen below, is displayed:



14. To Update Web Server Plug-in run the following command:

<DeploymentManager home>/profiles/dmgr/bin/GenPluginCfg.sh

---

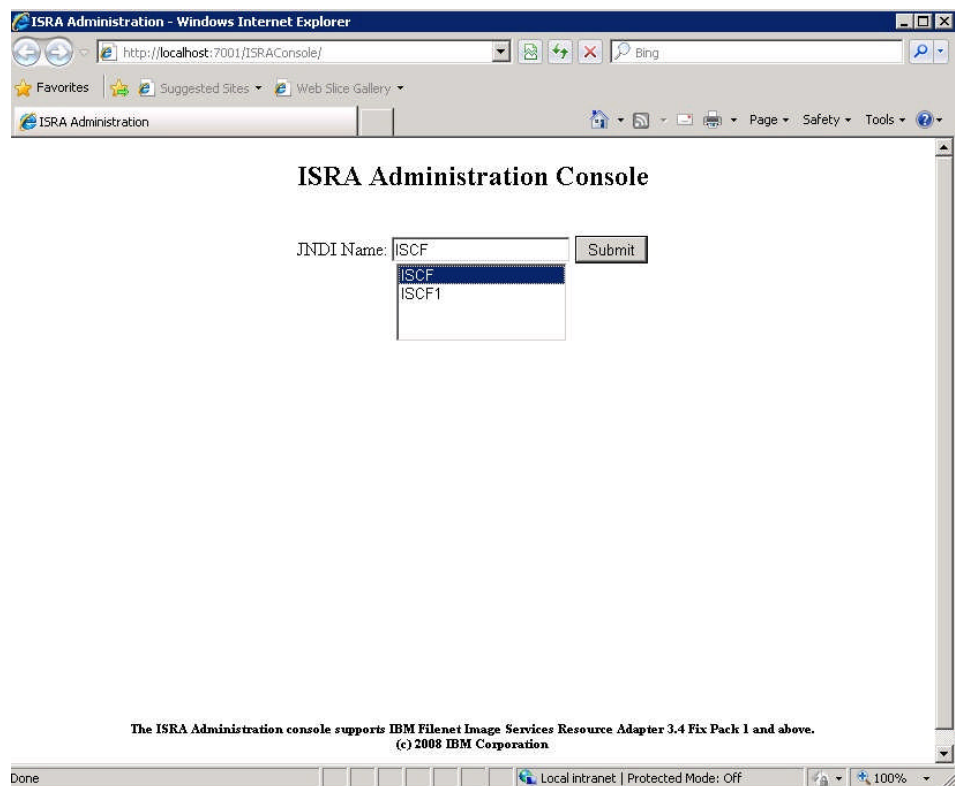
**Note** The user should update Web Server Plug-in after deploying Web/Enterprise applications.

---

## Using the ISRA Console

To access the ISRA Console, follow the steps below:

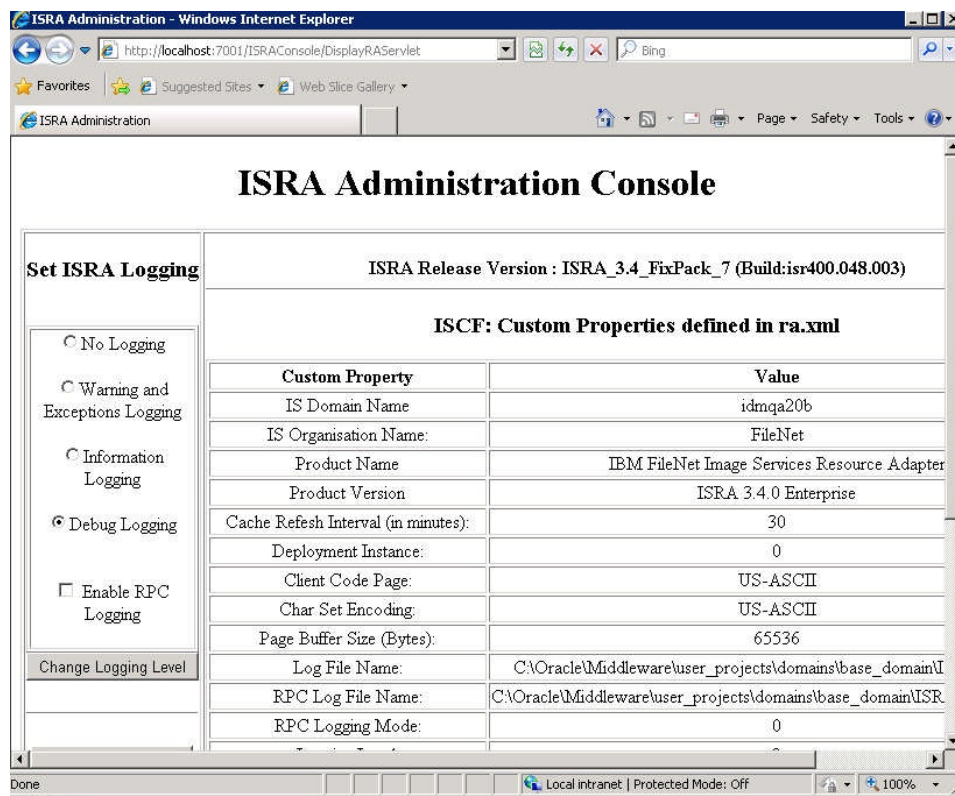
1. Go to the location where the application is available  
(http://<AppServerName>:  
<AppServerPort>/<ApplicationContextRoot>)ApplicationContextRoot is **ISRAConsole**.



2. Enter the JNDI name of the library and click **Submit**.

A page showing the current values configured in the ra.xml is shown along with controls to edit the ISRA logging levels.

A link has been provided on the page, to access the ISRA Sample Application.

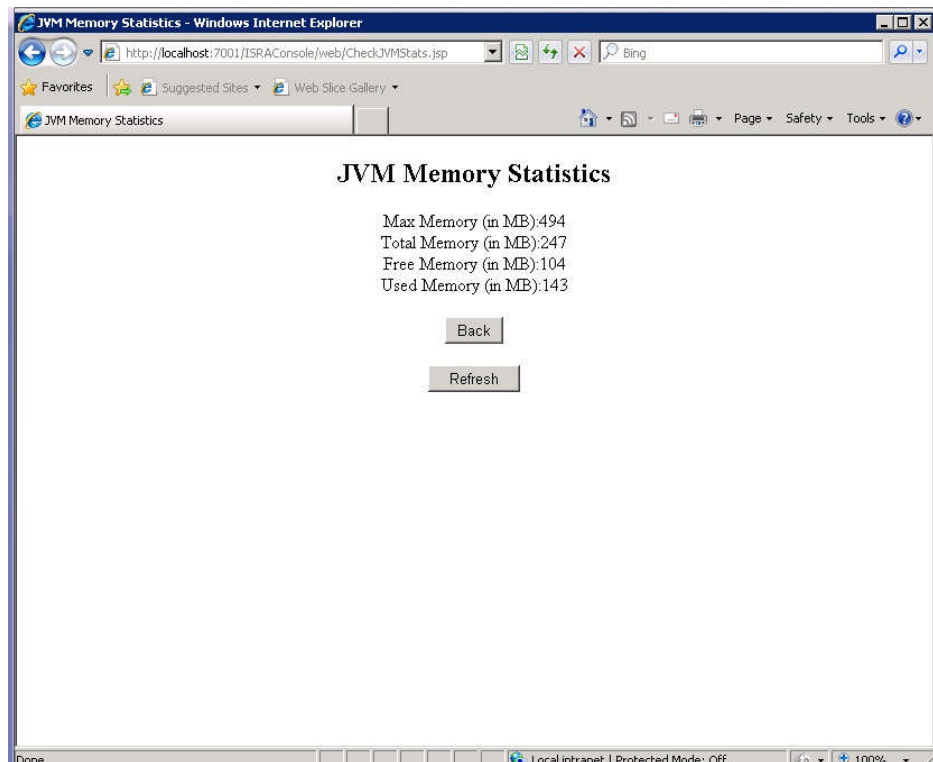


Changes to the logging level settings are applied to ISRA with immediate effect. The changes to logging levels are updated in the properties displayed on the screen.

The changes are valid till the application server is recycled. When the application server is restarted the log level settings specified in the ra.xml are used.

3. The JVM statistics can be used to study the memory usage in the Application Server JVM.



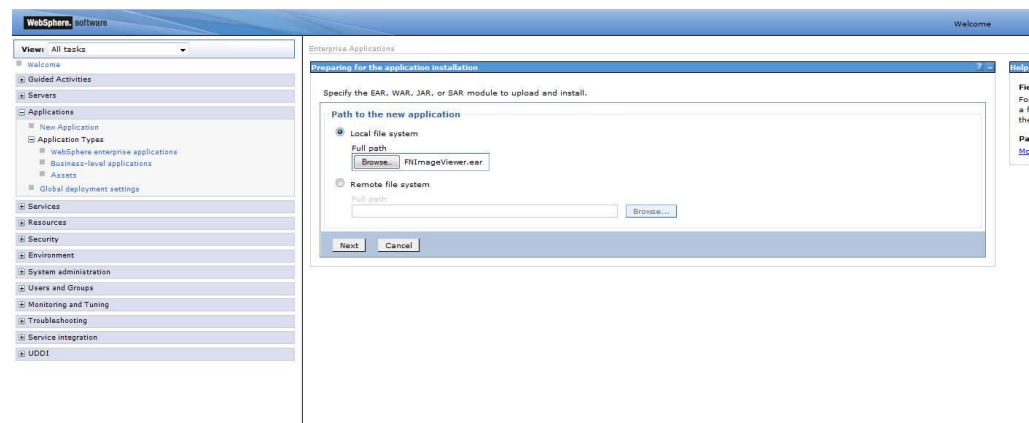


## Deploying IBM FileNet Image Viewer in Standalone Environment

The IBM FileNet Image Viewer is used by the ISRA Sample Application to display documents of specific mime types (TIFF, JPEG and BMP). Skip this section and move to the next, if you do not want the IBM FileNet Image Viewer configured with the ISRA Sample Application.

The steps to deploy the IBM FileNet Image Viewer in a Standalone environment are:

1. Launch the WebSphere Administrative Console. Click **Applications > Application Types > WebSphere Enterprise applications**. The following screen appears:



- Click **Browse**. Navigate through the ISRA installation directory and choose FNImageViewer.ear. Click **Next**, until the **Summary** page appears.

Options	Values
Precompile JavaServer Pages files	No
Directory to install application	
Distribute application	Yes
Use Binary Configuration	No
Deploy enterprise beans	No
Application name	FNImageViewer
Create MBeans for resources	Yes
Override class reloading settings for Web and EJB modules	No
Reload interval in seconds	
Deploy Web services	No
Validate input off/warn/fail	warn
Process embedded configuration	No
File Permission	*.ldll=755*.*.so=755*.*.a=755*.*.pl=755
Application Build ID	Unknown
Allow dispatching includes to remote resources	No
Allow servicing includes from remote resources	No
Business level application name	
Asynchronous Request Dispatch Type	Disabled
Allow EJB reference targets to resolve automatically	No

- Click **Finish**. The following screen appears:

**Installing...**

If there are enterprise beans in the application, the EJB deployment process can take several minutes. Do not save the configuration until the process completes. Check the SystemOut.log on the deployment manager or server where the application is deployed for specific information about the EJB deployment process as it occurs.

ADMA5016: Installation of FNImageViewer started.

ADMA5067: Resource validation for application FNImageViewer completed successfully.

ADMA5058: Application and module versions are validated with versions of deployment targets.

ADMA5005: The application FNImageViewer is configured in the WebSphere Application Server repository.

ADMA5005: The application FNImageViewer is configured in the WebSphere Application Server repository.

ADMA5081: The bootstrap address for client module is configured in the WebSphere Application Server repository.

ADMA5053: The library references for the installed optional package are created.

ADMA5005: The application FNImageViewer is configured in the WebSphere Application Server repository.

ADMA5001: The application binaries are saved in /opt/IBM/WebSphere/AppServer/profiles/AppSrv03/wstemp0/workpace/cells/dumptyNode02Cell/applications/FNImageViewer.ear/FNImageV

ADMA5005: The application FNImageViewer is configured in the WebSphere Application Server repository.

SECJ0400: Successfully updated the application FNImageViewer with the appContextIDForSecurity information.

ADMA5005: The application FNImageViewer is configured in the WebSphere Application Server repository.

ADMA5005: The application FNImageViewer is configured in the WebSphere Application Server repository.

ADMA5113: Activation plan created successfully.

ADMA5011: The cleanup of the temp directory for application FNImageViewer is complete.

ADMA5013: Application FNImageViewer installed successfully.

**Application FNImageViewer installed successfully.**

To start the application, first save changes to the master configuration. Changes have been made to your local configuration. You can:

- Save directly to the master configuration.
- Review changes before saving or discarding.

To work with installed applications, click the "Manage Applications" link.

[Manage Applications](#)

- Click **Save to Master Configuration**. The following screen appears:

**Enterprise Applications**

Use this page to manage installed applications. A single application can be deployed onto multiple servers.

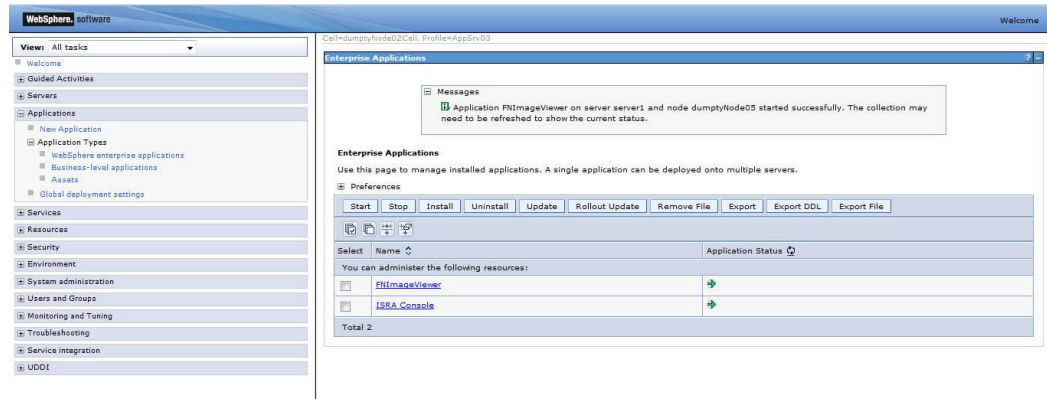
Preferences

Start Stop Install Uninstall Update Rollout Update Remove File Export Export DDL Export File

Select	Name	Application Status
<input type="checkbox"/>	FNImageViewer	Failed
<input type="checkbox"/>	ISRA Console	Success
Total 2		



- Click **Applications > Application Types > WebSphere Enterprise Applications**. Enable the **FNImageViewer** check box and click **Start**. A message, as shown in the screen below, is displayed:




---

**Note** FNImageViewer.ear is located under the Sample subfolder in the ISRA installation directory. IBM FileNet Image Viewer files (FNImageViewer.jar) and IBM FileNet Image Viewer documentation are located in the FNImageViewer\docs subfolder in the ISRA installation directory.

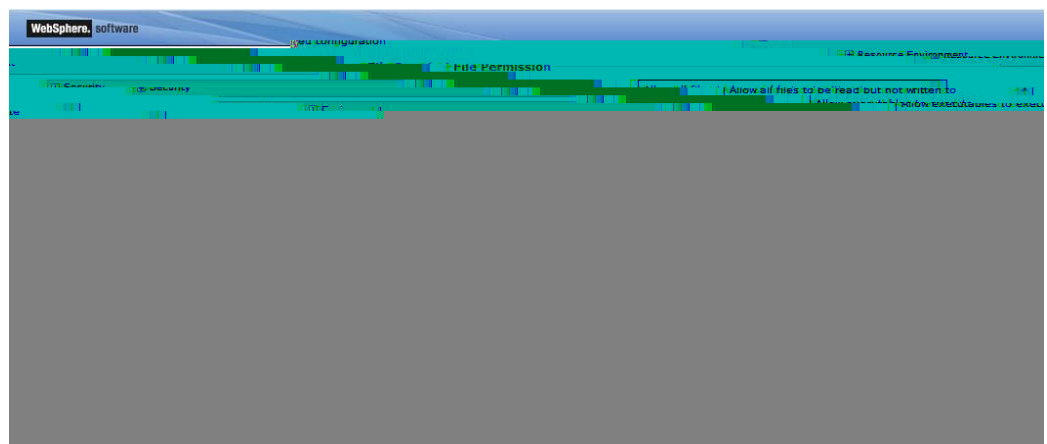
---

## Deploying IBM FileNet Image Viewer in Clustered Environment

The IBM FileNet Image viewer is used by the ISRA Sample Application to display documents of specific mime types (TIFF, JPEG and BMP). Skip this section and move to the next, if you do not want the IBM FileNet Image Viewer configured with the ISRA Sample Application.

The steps to deploy the IBM FileNet Image Viewer in a Clustered Environment are:

- Launch the WebSphere Network Manager Admin console. Click **Applications > Application Types > WebSphere Enterprise Applications**. The following screen appears:



2. Click **Browse**. Navigate through the ISRA installation directory and choose FNImageViewer.ear. Click **OK**.
3. Click **Next**. The following screen appears:

4. Click **Next**. The following screen appears:

Specify options for installing enterprise applications and modules.

**Step 1** Select installation options  
**→ Step 2: Map modules to servers**  
**✦ Step 3** Map virtual hosts for Web modules  
**Step 4** Summary

**Map modules to servers**

Specify targets such as application servers or clusters of application servers where you want to install the modules that are contained in your application. Modules can be installed on the same application server or dispersed among several application servers. Also, specify the Web servers as targets that serve as routers for requests to this application. The plug-in configuration file (plugin-cfg.xml) for each Web server is generated, based on the applications that are routed through.

Clusters and servers:

- WebSphere:cell=arabiaCell01,cluster=Cluster01
- WebSphere:cell=arabiaCell01,node=arabiaNode04,server=server1
- WebSphere:cell=arabiaCell01,node=arabiaNode03,server=server1
- WebSphere:cell=arabiaCell01,node=arabiaNode02,server=server1

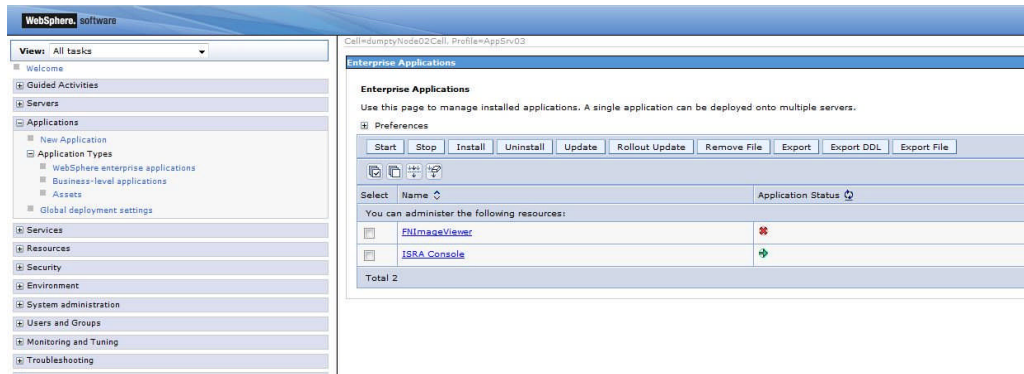
Apply

Select	Module	URI	Server
<input type="checkbox"/>	FNImageViewer.var	FNImageViewer.war, WEB-INF/web.xml	WebSphere:cell=arabiaCell01,node=arabiaNode02,server=server1 WebSphere:cell=arabiaCell01,node=arabiaNode03,server=server1 WebSphere:cell=arabiaCell01,node=arabiaNode04,server=server1 WebSphere:cell=arabiaCell01,cluster=Cluster01

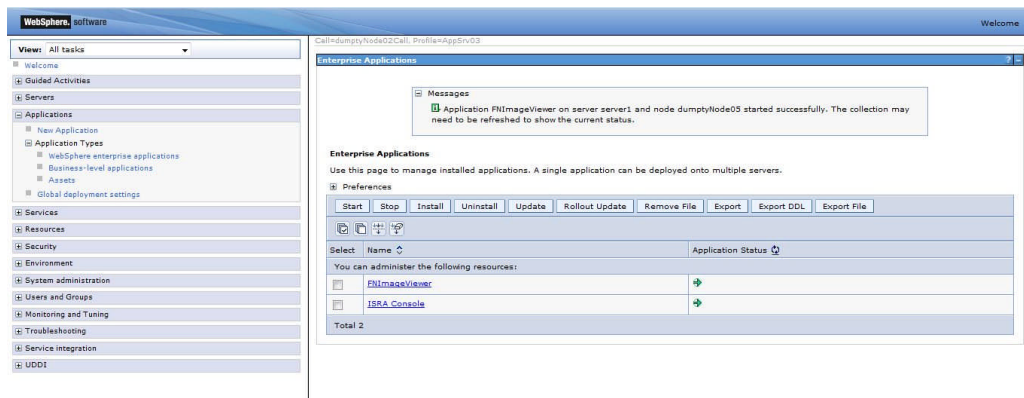
Previous Next Cancel

5. Click **Next**. The following screen appears:





9. Enable the **FNImageViewer** check box and click **Start**. A message, as shown in the screen below, is displayed:



10. To Update Web Server Plug-in run the following command:

```
<DeploymentManager home>/profiles/dmgr/bin/GenPluginCfg.sh
```

---

**Note** **FNImageViewer.ear** is located under the `Sample` subfolder in the ISRA installation directory. IBM FileNet Image Viewer files (`FNImageViewer.jar`) and IBM FileNet Image Viewer documentation are located in the `FNImageViewer/docs` subfolder in the ISRA installation directory.

---

## IBM FileNet Image Viewer Quick Start Feature

The Quick Start feature provides a mechanism for initializing a Web browser, Java, and Image Viewer session. The background task required to initialize an Image Viewer session is done at the time when the Web browser is initialized, prior to the time when Image Viewer is actually required. This reduces the startup time of Image Viewer. This feature is supported on various Operating Systems, such as Microsoft Windows 98, NT, 2000 Professional, and XP. The only Web browser supported for this feature is Internet Explorer. The Quick Start feature is not enabled by default; you need to manually enable it.

## Enabling Quick Start Feature

To enable quick start feature:

1. Extract FNImageViewer.ear from the patch.
2. Check the availability of "quickstart.htm" file in the FNImageViewer.war extracted from FNImageViewer.ear
3. Extract ISRAConsole.ear from the patch.
4. Extract ISRASampleWEB.war file from ISRAConsole.ear.
5. Extract 'DisplayDocument.jsp' file from ISRASampleWEB.war.
6. Add the highlighted tag to the file as shown in the code segment below:

```
<APPLET CODEBASE = "/FNImageViewer/FNJavaV1Files" ARCHIVE
="ji.jar"
CODE = "ji.applet.jiApplet.class" NAME = " viewONE" WIDTH =
"100%"
HEIGHT = "97%" HSPACE = 0 VSPACE = 0 ALIGN = middle
MAYSCRIPT="true">
```

```
-- -- --
```

```
<%if(RAVersion2.equalsIgnoreCase("Enterprise")){%>
```

```
-- -- --
```

```
<param name="UserId" value="<%=userId%>">
<param name="quickstartURL" value="quickstart.htm">
<%/*End of if condition where
RAVersion2.equalsIgnoreCase("Enterprise")*/%>
</Applet>
```

7. Save and close the file.
8. Bundle the new file into ISRASampleWEB.war
9. Bundle the WAR file into ISRAConsole.ear.
10. Undeploy the old ISRAConsole.ear
11. Deploy the new ISRAConsole.ear.
12. Open a document in IBM FileNet Image Viewer.
13. Right-click the document to open the context menu.
14. From the context menu, click **Preferences > QuickStart** to enable the Quick Start feature. A 'tick' icon appears on the left-hand side of the Quick Start menu indicating that the feature is enabled.

Enabling the Quick Start feature will add an icon within the System tray (bottom right of the Windows Desktop) and a menu item "IBM FileNet JavaView QuickStart for Internet Explorer" under Start > Programs > Startup menu. After enabling Quick Start, if the machine is rebooted, the Quick Start feature remains enabled. Disabling the Quick Start feature will remove the Quick Start icon from the System tray and the menu item "IBM FileNet JavaView QuickStart for Internet Explorer" from the Start > Programs > Startup menu. The 'tick' icon on the left-hand side of the Quick Start menu (right click **document > Preferences > QuickStart**) indicating that the feature is enabled will disappear.

## Known Issues in the Quick Start Feature

Following are the known issues in IBM FileNet Image Viewer:

- Web session will not end until Quick Start feature is disabled or the user explicitly logs out of the session with the Web server. If the Quick Start feature is enabled, closing the browser window(s) will not terminate the session with the Web server.
- If Quick Start is enabled and Internet Explorer is not the default browser, then on machine re-login or reboot, a message will display asking whether to make Internet Explorer the default browser. To avoid the message:
- Open a browser window.
  1. **Select Tools > Internet Options.**
  2. Click on the **Programs** tab and deselect the check box corresponding to "Internet Explorer should check to see whether it is the default browser".
  3. Click **Apply**.
  4. Click **OK**.
- If Always button is not selected on the security dialog box of the security certificate associated with the Image Viewer, then on machine re-login or reboot, a security dialog box is displayed.
- QuickStart feature is not available in Image Viewer if web server is accessed using IP address instead of host name in the URL.

## Testing Sample Application

After the ISRA Sample Application is started, the steps to verify the deployment or to access the ISRA Sample Application are:

1. Open a Web browser and enter the URL:  
`http://<server>:<port>/context_root.`  
For example: `http://9.126.94.39:9088/ISRA/`

The Web application context\_root is case sensitive. On a WebSphere server, the default port number is 9080. The default context\_root of the Sample Application is ISRA.





## 4. LDAP Configuration

In addition to direct IS logging, ISRA 3.4.0 also supports LDAP Authentication by third party Servers.

It is necessary to map users present on the LDAP Server to the IS, before using LDAP Authentication.

---

**Note** The installation of LDAP Server and creation of users on the LDAP machine are out of the scope of this document.

---

IBM FileNet provides two utilities - ldap\_export and ldap\_import to map existing users on the LDAP Server to the IS. These utilities are part of the IS package and must be executed on the machines running the LDAP Server and the IS.

The ldap\_export utility is used to export usernames on the LDAP Server to an xml file. Whereas, the ldap\_import utility imports usernames that have been mapped to the xml file and creates corresponding users on the IS.

It is mandatory that the ldap\_import algorithm and the xml file be present on the same machines, where IS exists. The ldap\_import algorithm uses a hashing algorithm to generate user passwords for the IS.

### Mapping Existing LDAP Server Users to IS

To configure user IDs in an IBM FileNet IS library:

1. Create user entries on the LDAP server. The user attribute “uid” will be used to create a user on IS. The remaining attributes (including “password”) can be assigned any value.
2. Use the **LDAP\_EXP.exe** utility to export the user entries created into an XML file.
3. LDAP\_EXP program has the following parameter options:

Option	Description
s <server>	LDAP server name or IP address, required value.
p <port>	LDAP port number, optional value, 389 is default.
d <binddn>	LDAP administrator bind domain name (DN), required value.
w <bindpw>	LDAP administrator bind password, required value.
t <ldap server type>	Required value for server type: msft – Microsoft Active Directory



Option	Description
	sun – Sun One Directory (iPlanet) nov – Novell eDirectory(NDS). ibm – IBM Directory.
b <basedn>	LDAP Base DN, optional value.
g <grouplist filename>	Group list file for input, optional value.
o <XML output filename>	XML output filename, optional value.
l <log filename>	Log Filename to use, optional value.
l	Check for special characters on <id> tags only
E	Remove all escape characters – '\'.
k	Use paged results. Windows to AD only
Z	Use secure socket connection
x <grouplist filename>	Group list file name for output, optional value.
v	Verbose log output.
c1 <user object class>	Class type for User, default is 'person'.
c2 <group object class>	Class type for Group, default is 'groupofuniquenames'.
a1 <user attribute>	Attribute to be used for user; default is 'dn'.
a2 <group attribute>	Attribute to be used for group; default is 'dn'
a3 <member attribute>	Attribute to be used for member; default is 'uniqueMember'.

---

**Note** User may use /?, -?, /h or -h to generate help.

---

Example command lines:

- **Sun One directory(iPlanet) server:**

```
ldap_exp -s SunSrvr1 -d "cn=Directory Manager" -w ":/, .++=" -t sun -b "dc=iPlanet ,
dc=com"
```

- **Microsoft Active Directory(AD) server:**

```
ldap_exp -s Win2KSrvr1 -d "CN=Administrator,CN=Users
,DC=win2ksrvr1
,DC=com" -w ":/, .++="
-t msft -b "dc=win2ksrvr1,dc=com"
```

- **Novell eDirectory(NDS) server:**

```
ldap_exp.exe -s NovSrvr1 -d "cn=Admin ,o=server" -w ":/, .++=" -t
nov -b
"o=wa"
```

- **IBM Directory server:**

```
ldap_exp -s IBMSrvr1 -d "Cn=Administrator" -w ":/, .+= " -t ibm -b
"dc=ibmsrvr1, dc=com"
```

4. Use the LDAP\_IMPORT.exe for IS libraries to import the user entries from XML file into the specified IBM FileNet IS library.

Parameters:

<i>/?</i>	Help screen
/h<host>[:organization]	IS host or domain name, organization.
/u<id> (used with /p)	Authorized IS user name
/p"<pwd>" (used with /u)	Encrypted IS user password.
/i<file>	XML input file.

For example, to import user entries from XML file:

```
C:\>ldap_import /hIMGSERV:FileNet /ildap_exp.xml
```

---

**Note** Options are NOT case sensitive. All the information or error messages are logged to the system log or the file 'ldap\_importyyyyymmddlog.txt'. If Username and password are not specified in the command, it prompts for username and password.

---

5. The IBM FileNet users created will have a password generated from the corresponding user IDs.

## Changing ISRA Specific Parameters for LDAP

The configurable properties to be set (modified) in **ra.xml** are:

- LdapImplClassName
- LdapImplClassString
- InherentLogin

Refer to [LdapImplClassName](#), [LdapImplClassString](#), and [InherentLogin](#), in section [Configurable ra.xml Properties](#) for details on the configuration of the respective entities.

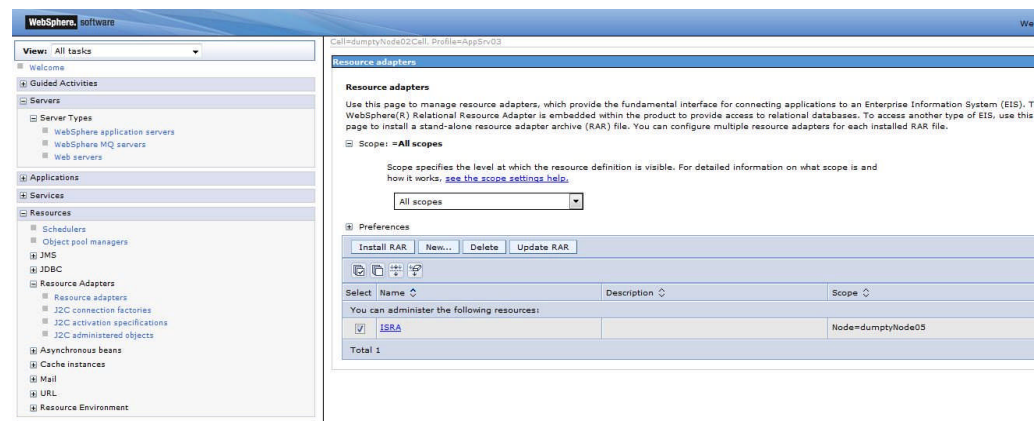
# 5. Undeployment

This section describes the undeployment procedure for the ISRA and the Sample Application from the WebSphere Server.

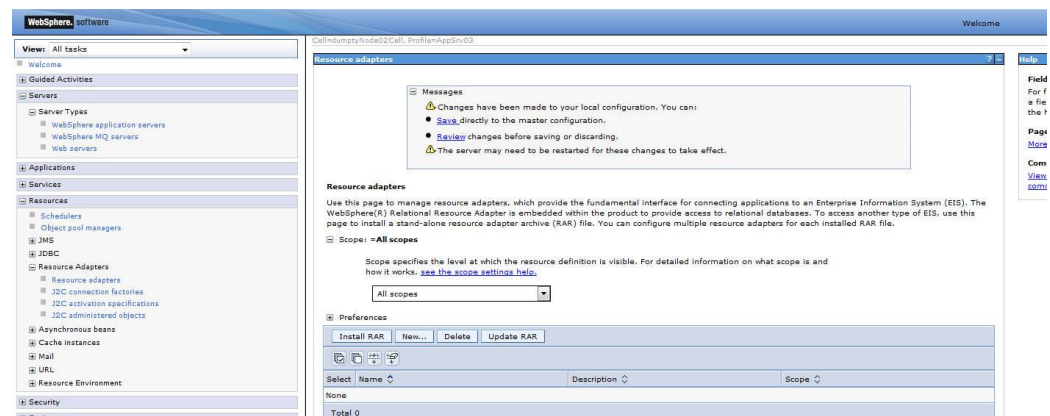
## Undeploying ISRA in a Standalone Environment

To undeploy ISRA using the Administrative Console:

1. Click **Resources > Resource Adapters > Resource Adapters**. The following screen appears:



2. Select the **ISRA** check box. Click **Delete**. A message, as shown in the screen below, is displayed:

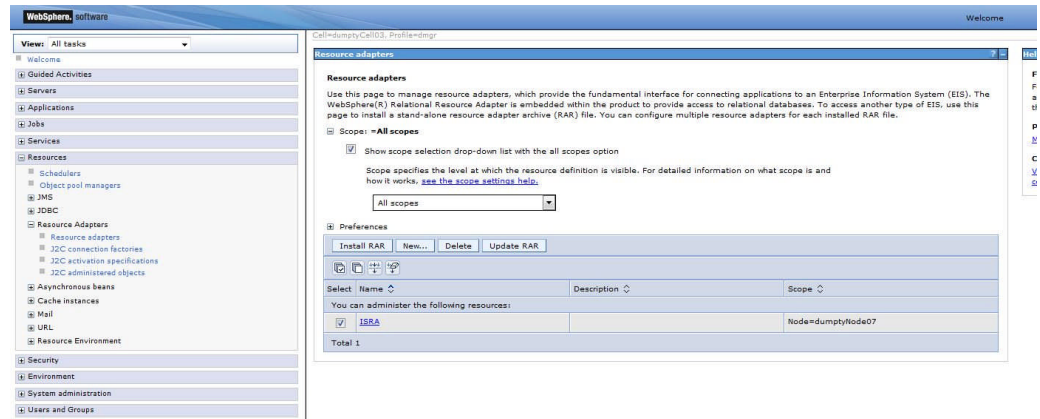


3. Click the **Save** link in the **Messages** box.

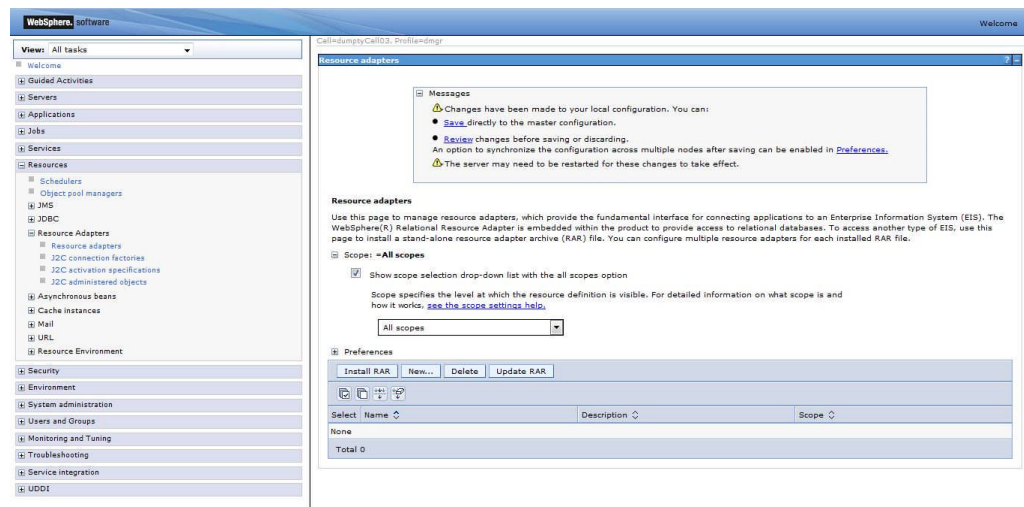
# Undeploying ISRA in a Clustered Environment

To undeploy ISRA using the Administrative Console:

1. Click **Resources > Resource Adapters > Resource Adapters**. The following screen appears:



2. Select the **ISRA** check box. Click **Delete**. A message, as shown in the screen below, is displayed:

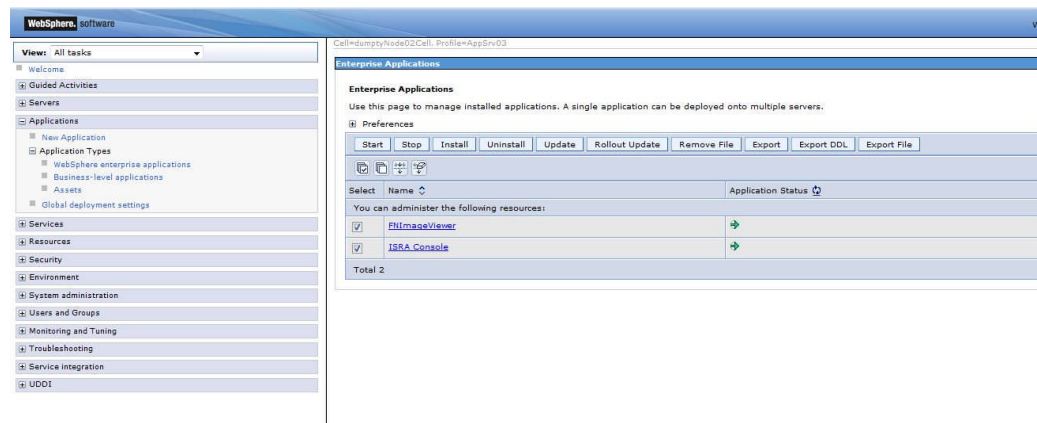


3. Click the **Save** link in the **Messages** box.

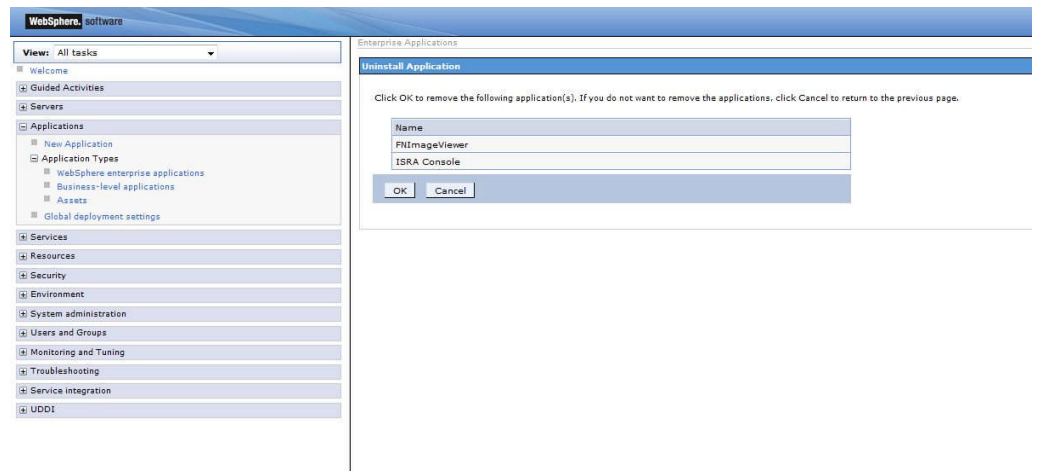
# Undeploying ISRA Console and Sample Application/FNImageViewer Application in a Standalone Environment

Undeploying ISRA Console and Applications in a standalone environment on a WebSphere server will physically remove the Application files.

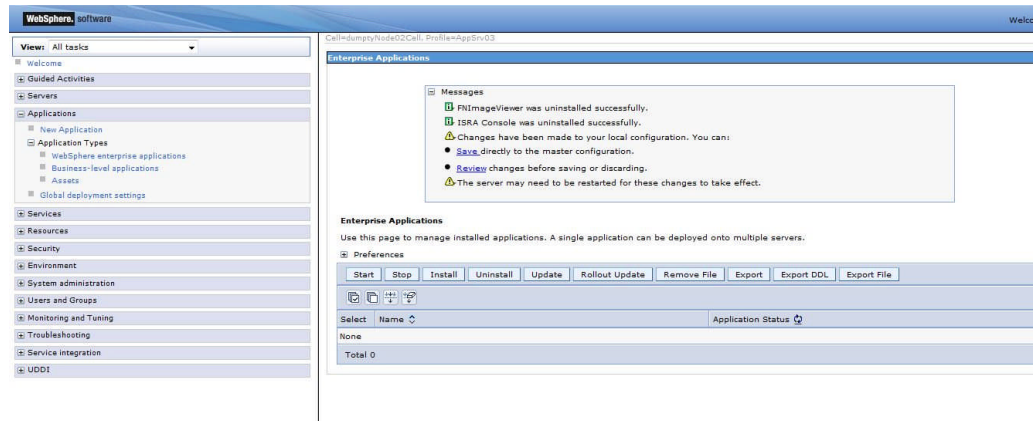
1. Click **Applications > Application Types > WebSphere Enterprise Applications**. The following screen appears:



2. Select the **FNImageViewer** and **ISRA Console** check boxes. Click **Uninstall**. A message, as shown in the screen below, is displayed:



3. Click **OK**.



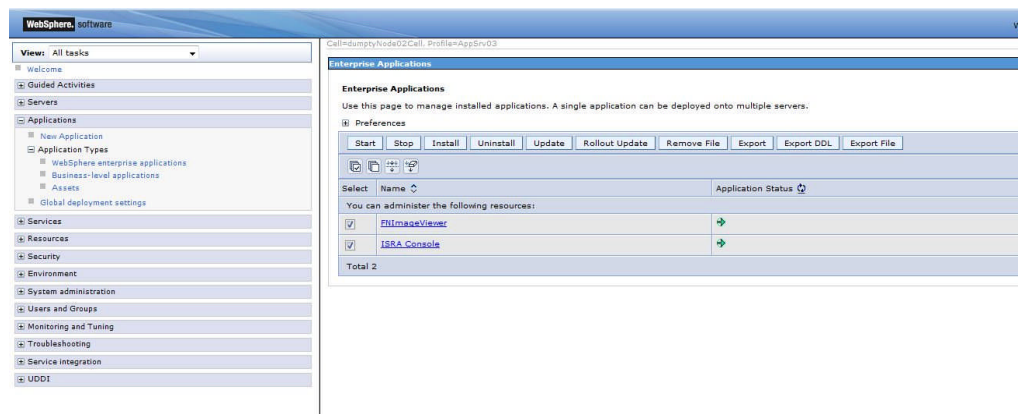
4. Click **Save** to link in the **Messages** box.

- 
- Note**
1. By selecting the appropriate checkboxes all or one of the applications can be uninstalled.
  2. The user must undeploy the previous version of ISRA Sample Application before deploying the latest version.
- 

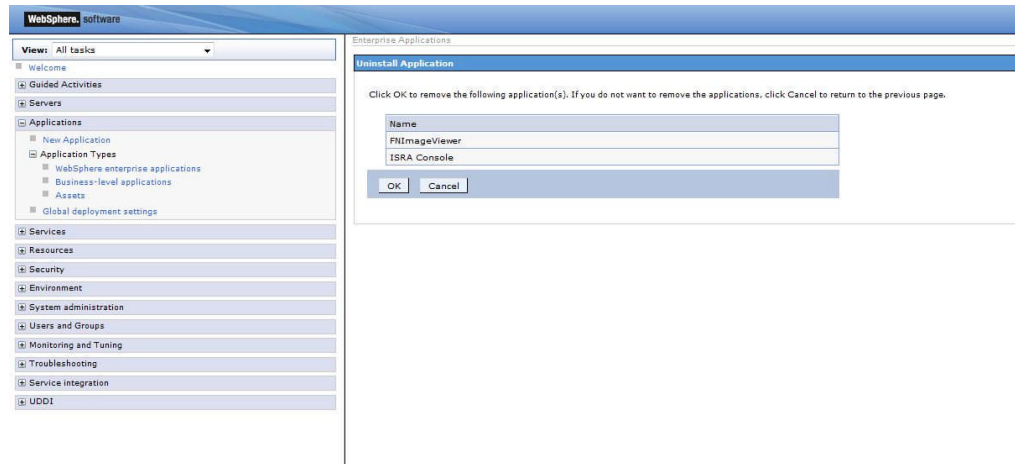
## Undeploying ISRA Console and Sample Application/FNImageViewer Application in a Clustered Environment

Undeploying the ISRA Console and Sample Application in a clustered environment on a WebSphere server will physically remove the Sample Application files.

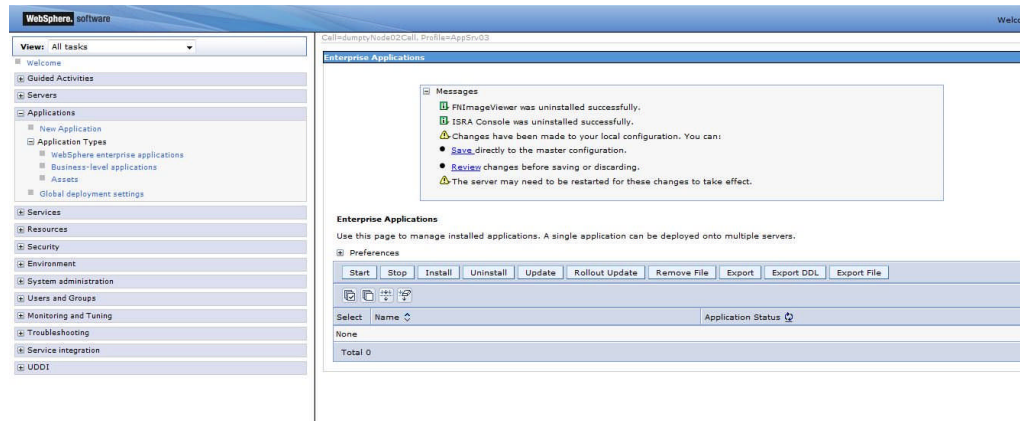
1. Click **Applications > Application Types > WebSphere Enterprise Applications**. The following screen appears:



2. Select the **FtnImageViewer** and **ISRA Console** check box and click **Uninstall**. A message, as shown in the screen below, is displayed:



3. Click **OK** to remove the application(s). The following screen appears:



4. Click **Save**. The application gets uninstalled.

---

**Note** The user must undeploy the previous version of ISRA Console and Sample Application before deploying the latest version.

---

## 6. Troubleshooting

This section describes how to troubleshoot ISRA.

### Disabling NCH Broadcasts

ISRA users (application client) need to access IS libraries across routers on networks where broadcasts are disabled. This is done by creating alias entries for the IS libraries in the hosts file, where ISRA is deployed. ISRA must locate the IP address of the NCH server to find other IS services for an IS setup.

ISRA attempts to find the NCH server by generating broadcast packets, even if the NCH server was not reachable using broadcasts. User can disable NCH server location broadcasts to reduce broadcast traffic on the network.

User may want to disable NCH broadcasts if:

- Routers are present between servers
- Want no broadcast activity on the networks.
- Want to force a multi-homed server to use a specific IP address configured by the operating system network directory search facility.

The steps to specify the alias in the hosts file are:

1. Locate **hosts file** on the server. It is located in the `/etc` folder on UNIX systems. On a Microsoft Windows Server, it is located in the `\system32\drivers\etc` under the Windows system directory.
2. Open the hosts file with a preferred text editor. If a host file does not exist, create a new file using a preferred text editor.
3. For each IBM FileNet library that user needs to connect through ISRA, entries should be made in the hosts file as: `<IP address of domain:organization> <domain-organization>-nch-server`, where:
  - `<IP address of domain:organization>` is IP address of an IBM FileNet domain and organization identifying the target IBM FileNet library system (NCH Server).
  - `<domain-organization>` is domain and organization name. When specifying the domain-organization name, follow these rules:
    - Delete all characters except ASCII alphanumeric characters and hyphens.
    - Convert all upper case characters to lower case.
    - Insert a hyphen between the domain and organization names.
    - Append `nch-server` as a literal.

For example, if an IBM FileNet library has a domain, `fn_is`, the organization is `ibm`, and its IP address is `123.45.6.78`, the hosts file entry will be:

```
123.45.6.78  fnis-ibm-nch-server
```



# Appendix A: ra.xml

## ra.xml

```
<?xml version="1.0" encoding="UTF-8"?>

<!DOCTYPE connector PUBLIC "-//Sun Microsystems, Inc.//DTD Connector
1.0//EN" 'http://java.sun.com/dtd/connector_1_0.dtd'>

<connector>
  <display-name>ISRA</display-name>
  <vendor-name>IBM</vendor-name>
  <spec-version>1.0</spec-version>
  <eis-type>IBM FileNet Image Services</eis-type>
  <version>3.4.0</version>
  <license>
    <license-required>>false</license-required>
  </license>
  <resourceadapter>
    <managedconnectionfactory-
class>com.filenet.is.ra.spi.FN_IS_SpiManagedConnectionFactory</managedc
onnectionfactory-class>
    <connectionfactory-
interface>javax.resource.cci.ConnectionFactory</connectionfactory-
interface>
    <connectionfactory-impl-
class>com.filenet.is.ra.cci.FN_IS_CciConnectionFactory</connectionfacto
ry-impl-class>
    <connection-interface>javax.resource.cci.Connection</connection-
interface>
    <connection-impl-
class>com.filenet.is.ra.cci.FN_IS_CciConnection</connection-impl-class>
    <transaction-support>NoTransaction</transaction-support>
  <config-property>
    <description>Domain name of the Image Services
Server</description>
    <config-property-name>DomainName</config-property-name>
    <config-property-type>java.lang.String</config-property-type>
    <config-property-value>FileNetIS</config-property-value>
  </config-property>
  <config-property>
    <description>Organization name of the Image Services
Server</description>
    <config-property-name>OrganizationName</config-property-name>
    <config-property-type>java.lang.String</config-property-type>
    <config-property-value>IBM</config-property-value>
  </config-property>
  <config-property>
    <description>0-Exceptions and Warnings; 1-Info; 2-Debug
Level</description>
    <config-property-name>LoggingLevel</config-property-name>
    <config-property-type>java.lang.Integer</config-property-type>
    <config-property-value>0</config-property-value>
```

```

    </config-property>
    <config-property>
      <description>0-No Logging; 1-Console Logging; 2-File Logging; 3-
Both(File and console)</description>
      <config-property-name>LoggingMode</config-property-name>
      <config-property-type>java.lang.Integer</config-property-type>
      <config-property-value>3</config-property-value>
    </config-property>
    <config-property>
      <description>Page data fetch size (in kilo bytes)</description>
      <config-property-name>PageBufferSize</config-property-name>
      <config-property-type>java.lang.Integer</config-property-type>
      <config-property-value>64</config-property-value>
    </config-property>
    <config-property>
      <description>Cache refresh interval(in minutes)</description>
      <config-property-name>CacheRefreshInterval</config-property-name>
      <config-property-type>java.lang.Integer</config-property-type>
      <config-property-value>30</config-property-value>
    </config-property>
    <!-- Added by IBM for caching of groups only-->
    <config-property>
      <description>Security cache mode(1-caches users and groups 2-
caches groups only)</description>
      <config-property-name>SecurityCacheMode</config-property-name>
      <config-property-type>java.lang.Integer</config-property-type>
      <config-property-value>1</config-property-value>
    </config-property>

    <!-- Added by IBM for selective metadata cache refresh-->
    <config-property>
      <description>Selective metadata refresh(0-No refresh 1-printer
cache 2-doc class cache 4-key fields cache 8-menu values cache
)</description>
      <config-property-name>MetaDataCacheRefreshMode</config-property-
name>
      <config-property-type>java.lang.Integer</config-property-type>
      <config-property-value>15</config-property-value>
    </config-property>

    <config-property>
      <description>Name of the Product</description>
      <config-property-name>ProductName</config-property-name>
      <config-property-type>java.lang.String</config-property-type>
      <config-property-value>IBM FileNet Image Services Resource
Adapter</config-property-value>
    </config-property>
    <config-property>
      <description>Product Version</description>
      <config-property-name>ProductVersion</config-property-name>
      <config-property-type>java.lang.String</config-property-type>
      <config-property-value>ISRA 3.4.0 Enterprise</config-property-
value>
    </config-property>
    <config-property>
      <description>ISRA Logfile name (can include path) </description>
      <config-property-name>LogFileName</config-property-name>

```

```

        <config-property-type>java.lang.String</config-property-type>
        <config-property-value>ISRA.log</config-property-value>
    </config-property>
    <config-property>
        <description>Maximum Size of ISRA LogFile (in mega
bytes)</description>
        <config-property-name>LogFileSize</config-property-name>
        <config-property-type>java.lang.Integer</config-property-type>
        <config-property-value>5</config-property-value>
    </config-property>
    <config-property>
        <description>LDAP Authentication Class Name</description>
        <config-property-name>LdapImplClassName</config-property-
name>
        <config-property-type>java.lang.String</config-property-
type>
        <config-property-
value>com.filenet.is.ra.fnis.FN_IS_IPlanetImpl</config-property-value>
    </config-property>
    <config-property>
        <description>Server details for LDAP Authentication
</description>
        <config-property-name>LdapImplClassString</config-property-
name>
        <config-property-type>java.lang.String</config-property-
type>
        <config-property-
value>filenetserver;389;ou=filenet,ou=people,dc=filenetroot</config-
property-value>
    </config-property>
    <config-property>
        <description>Inherently login through LDAP authentication
or not 0-Direct IS Login;1-LDAP Authentication</description>
        <config-property-name>InherentLogin</config-property-name>
        <config-property-type>java.lang.Integer</config-property-type>
        <config-property-value>0</config-property-value>
    </config-property>
    <config-property>
        <description>ISRA instance that is currently being deployed on a
single machine; Min Value = 1, Max Value = 100</description>
        <config-property-name>DeploymentInstance</config-property-name>
        <config-property-type>java.lang.Integer</config-property-type>
        <config-property-value>1</config-property-value>
    </config-property>
    <config-property>
        <description>Parameter to enable PCH Logging in ISRA
</description>
        <config-property-name>PCHLogging</config-property-name>
        <config-property-type>java.lang.String</config-property-type>
        <config-property-value>Disabled</config-property-value>
    </config-property>
    <config-property>
        <description>LDAP Anonymous user login flag</description>
        <config-property-name>AllowAnonymousUser</config-property-
name>
        <config-property-type>java.lang.Boolean</config-property-type>
        <config-property-value>true</config-property-value>

```

```

</config-property>
<config-property>
  <description>0-No Logging; 1-File Logging</description>
  <config-property-name>RPCLogging</config-property-name>
  <config-property-type>java.lang.Integer</config-property-type>
  <config-property-value>0</config-property-value>
</config-property>
<config-property>
  <description>Codepage for ISRA</description>
  <config-property-name>ClientCodepage</config-property-name>
  <config-property-type>java.lang.String</config-property-type>
  <config-property-value>cp1250</config-property-value>
</config-property>
<config-property>
  <description>Set this flag to true if your application displays
the dates returned from ISRA in GMT Timezone</description>
  <config-property-name>GMTEnabled</config-property-name>
  <config-property-type>java.lang.Boolean</config-property-type>
  <config-property-value>>false</config-property-value>
</config-property>
<config-property>
  <description>Locale of the Image Services Server (two letter ISO
language code, for example en, de, ar, ja)</description>
  <config-property-name>ISLocale</config-property-name>
  <config-property-type>java.lang.String</config-property-type>
  <config-property-value>en</config-property-value>
</config-property>
<config-property>
  <description>It is a configurable parameter to Ignore [77,0,11 The
object is busy] error, incase of DocMigration</description>
  <config-property-name>IgnoreObjectBusyMsgInDocMigration</config-
property-name>
  <config-property-type>java.lang.Boolean</config-property-type>
  <config-property-value>>false</config-property-value>
</config-property>
  <authentication-mechanism>
    <authentication-mechanism-type>BasicPassword</authentication-
mechanism-type>
    <credential-
interface>javax.resource.security.PasswordCredential</credential-
interface>
    </authentication-mechanism>
    <reauthentication-support>>false</reauthentication-support>
  </resourceadapter>
</connector>

```

## Notices

This information was developed for products and services offered in the U.S.A.

IBM may not offer the products, services, or features discussed in this document in other countries. Consult your local IBM representative for information on the products and services currently available in your area. Any reference to an IBM product, program, or service is not intended to state or imply that only that IBM product, program, or service may be used. Any functionally equivalent product, program, or service that does not infringe any IBM intellectual property right may be used instead. However, it is the user's responsibility to evaluate and verify the operation of any non-IBM product, program, or service.

IBM may have patents or pending patent applications covering subject matter described in this document. The furnishing of this document does not grant you any license to these patents. You can send license inquiries, in writing, to:

IBM Director of Licensing

IBM Corporation

North Castle Drive

Armonk, NY 10504-1785

U.S.A.

For license inquiries regarding double-byte (DBCS) information, contact the IBM Intellectual Property Department in your country or send inquiries, in writing, to:

IBM World Trade Asia Corporation

Licensing

2-31 Roppongi 3-chome, Minato-ku

Tokyo 106-0032, Japan

**The following paragraph does not apply to the United Kingdom or any other country where such provisions are inconsistent with local law:** INTERNATIONAL BUSINESS MACHINES CORPORATION PROVIDES THIS PUBLICATION "AS IS" WITHOUT WARRANTY OF ANY KIND, EITHER EXPRESS OR IMPLIED, INCLUDING, BUT NOT LIMITED TO, THE IMPLIED WARRANTIES OF NON-INFRINGEMENT, MERCHANTABILITY OR FITNESS FOR A PARTICULAR PURPOSE. Some states do not allow disclaimer of express or implied warranties in certain transactions, therefore, this statement may not apply to you.

This information could include technical inaccuracies or typographical errors. Changes are periodically made to the information herein; these changes will be incorporated in new editions of the publication. IBM may make improvements and/or changes in the product(s) and/or the program(s) described in this publication at any time without notice.

Any references in this information to non-IBM Web sites are provided for convenience only and do not in any manner serve as an endorsement of those Web sites. The materials at those Web sites are not part of the materials for this IBM product and use of those Web sites is at your own risk.

IBM may use or distribute any of the information you supply in any way it believes appropriate without incurring any obligation to you.

Licensees of this program who wish to have information about it for the purpose of enabling: (i) the exchange of information between independently created programs and other programs (including this one) and (ii) the mutual use of the information which has been exchanged, should contact:

IBM Corporation

J46A/G4

555 Bailey Avenue

San Jose, CA 95141-1003

U.S.A.

Such information may be available, subject to appropriate terms and conditions, including in some cases, payment of a fee.

The licensed program described in this document and all licensed material available for it are provided by IBM under terms of the IBM Customer Agreement, IBM International Program License Agreement or any equivalent agreement between us.

Any performance data contained herein was determined in a controlled environment. Therefore, the results obtained in other operating environments may vary significantly. Some measurements may have been made on development-level systems and there is no guarantee that these measurements will be the same on generally available systems. Furthermore, some measurements may have been estimated through extrapolation. Actual results may vary. Users of this document should verify the applicable data for their specific environment.

Information concerning non-IBM products was obtained from the suppliers of those products, their published announcements or other publicly available sources. IBM has not tested those products and cannot confirm the accuracy of performance, compatibility or any other claims related to non-IBM products. Questions on the capabilities of non-IBM products should be addressed to the suppliers of those products.

All statements regarding IBM's future direction or intent are subject to change or withdrawal without notice, and represent goals and objectives only.

This information contains examples of data and reports used in daily business operations. To illustrate them as completely as possible, the examples include the names of individuals, companies, brands, and products. All of these names are fictitious and any similarity to the names and addresses used by an actual business enterprise is entirely coincidental.

## **COPYRIGHT LICENSE:**

This information contains sample application programs in source language, which illustrate programming techniques on various operating platforms. You may copy, modify, and distribute these sample programs in any form without payment to IBM, for the purposes of developing, using, marketing or distributing application programs conforming to the application programming interface for the operating platform for which the sample programs are written. These examples have not been thoroughly tested under all conditions. IBM, therefore, cannot guarantee or imply reliability, serviceability, or function of these programs.

## **Trademarks**

- IBM is a registered trademark of International Business Machines Corporation in the United States, other countries, or both.

- Adobe, the Adobe logo, PostScript, and the PostScript logo are either registered trademarks or trademarks of Adobe Systems Incorporated in the United States, and/or other countries.
- Cell Broadband Engine is a trademark of Sony Computer Entertainment, Inc. in the United States, other countries, or both and is used under license there from.
- Java and all Java-based trademarks are trademarks of Sun Microsystems, Inc. in the United States, other countries, or both.
- Microsoft, Windows, Windows NT, and the Windows logo are trademarks of Microsoft Corporation in the United States, other countries, or both.
- Intel, Intel logo, Intel Inside, Intel Inside logo, Intel Centrino, Intel Centrino logo, Celeron, Intel Xeon, Intel SpeedStep, Itanium, and Pentium are trademarks or registered trademarks of Intel Corporation or its subsidiaries in the United States and other countries.
- UNIX is a registered trademark of The Open Group in the United States and other countries.
- Linux is a registered trademark of Linus Torvalds in the United States, other countries, or both.
- ITIL is a registered trademark, and a registered community trademark of the Office of Government Commerce, and is registered in the U.S. Patent and Trademark Office.
- IT Infrastructure Library is a registered trademark of the Central Computer and Telecommunications Agency, which is now part of the Office of Government Commerce.
- Other company, product, or service names may be trademarks or service marks of others.



# Index

- AllowAnonymousUser, 26, 35
- CacheRefreshInterval, 26, 29
- Changing ISRA Specific Parameters, 24
- Changing ISRA Specific Parameters for LDAP, 62
- ClientCodepage, 26, 36
- Configuring Deployed ISRA, 23
- Configuring Multiple IS Server with ISRA, 39
- Configuring Sample Application, 40
- Configuring WebSphere-Specific Parameters, 37
- Deploying IBM FileNet Image Viewer in Clustered Environment, 53
- Deploying IBM FileNet Image Viewer in Standalone Environment, 51
- Deploying ISRA Console and Sample Application in Clustered Environment, 45
- Deploying ISRA Console and Sample Application in Standalone Environment, 43
- Deploying ISRA in a Clustered Environment, 12
- Deploying ISRA in a Standalone Environment, 8
- Deploying ISRA in an Application Server Cell, 17
- Deployment Requirements, 7
- DeploymentInstance, 22, 26, 33
- Disabling NCH Broadcasts, 68
- DomainName, 26
- Enabling Quick Start Feature, 57
- GMTEnabled flag, 37
- Hardware Requirements, 7
- IBM FileNet Image Viewer Quick Start Feature, 56
- IgnoreObjectBusyMsgInDocMigration, 37
- InherentLogin, 26, 33
- ISLocale, 37
- ISRA Console, 40
- Known Issues in the Quick Start Feature, 58
- LdapImplClassName, 26, 32
- LdapImplClassString, 26, 32
- LogFileName, 26, 31
- LogFileSize, 26, 31
- LoggingLevel, 26, 27
- LoggingMode, 26, 28
- Mandatory Requirements for ISRA, 21
- Mapping Existing LDAP Server Users to IS, 60
- OrganizationName, 26, 27
- PageBufferSize, 26, 29
- PCHLogging, 26, 34
- RPCLogging, 26, 35
- Software Requirements, 7
- Testing Sample Application, 58
- Undeploying ISRA Console and Sample Application/FNImageViewer Application in a Clustered Environment, 66
- Undeploying ISRA Console and Sample Application/FNImageViewer Application in a Standalone Environment, 65
- Undeploying ISRA in a Clustered Environment, 64
- Undeploying ISRA in a Standalone Environment, 63
- Using the ISRA Console, 49