

The IBM logo, consisting of the letters "IBM" in a stylized, striped font, is displayed on a black rectangular background.The FileNet logo, featuring a stylized blue and white graphic of a document or folder next to the word "FILENET" in a bold, blue, sans-serif font.

# Image Services Resource Adapter

## Deployment Guide

For JBoss (4.0.x)

Release 3.4 Fixpack 3

April 2009

© Copyright International Business Machines Corporation 1984, 2009. All rights reserved.

US Government Users Restricted Rights – Use, duplication or disclosure restricted by GSA ADP Schedule Contract with IBM Corp.



## About This Manual 6

**Conventions Used in the Document 6**

**Related References 6**

**Comments and Suggestions 6**

## 1. ISRA Deployment 7

**Deployment Requirements 7**

Hardware Requirements 7

Software Requirements 7

**Deploying ISRA in a Standalone Environment 7**

Deploying ISRA.rar 7

ISRA RA Descriptor (JBoss specific) 8

**Deploying ISRA in a Clustered Environment 8**

Deploying ISRA.rar 8

ISRA RA Descriptor (JBoss specific) 9

**Mandatory Requirements for ISRA 10**

## 2. ISRA Configuration 11

**Configuring Deployed ISRA 11**

**Changing ISRA Specific Parameters 11**

Configurable ra.xml Properties 11

DomainName 12

OrganizationName 12

LoggingLevel 12

LoggingMode 13

PageBufferSize 13

CacheRefreshInterval 13

SecurityCacheMode 13

MetaDataCacheRefreshMode 13

LogFileName 14

LogFileSize 14

LdapImplClassName 14

LdapImplClassString 15

InherentLogin 15

DeploymentInstance 15

PCHLogging 16

- AllowAnonymousUser 16
- RPCLogging 16
- ClientCodepage 16
- GMTEnabled flag 17
- ISLocale 18
- IgnoreObjectBusyMsgInDocMigration 18
- Configuring JBoss Specific Entities 18
- Configuring Multiple IS Servers with ISRA 18

### **3. Configuring and Deploying ISRA Console and Sample Application 19**

- ISRA Console 19**

- Configuring Sample Application 19**

- Deploying ISRA Console and Sample Application in Standalone Environment 21**

- Deploying ISRA Console and Sample Application in Clustered Environment 21**

- Using the ISRA Console 22

- Deploying IBM FileNet Image Viewer in Standalone Environment 23**

- Deploying IBM FileNet Image Viewer in Clustered Environment 23**

- IBM FileNet Image Viewer Quick Start Feature 24**

- Enabling Quick Start Feature 24

- Known Issues in the Quick Start Feature 25

- Testing Sample Application 25**

### **4. LDAP Configuration 27**

- Mapping Existing LDAP Server Users to IS 27**

- Changing ISRA Specific Parameters for LDAP 29**

### **5. Undeployment 30**

- Undeploying ISRA in a Standalone Environment 30**

- Undeploying ISRA in a Clustered Environment 30**

- Undeploying ISRA Console and Sample Application in a Standalone Environment 30**

- Undeploying ISRA Console and Sample Application in a Clustered Environment 30**

## **6. Troubleshooting 32**

**Disabling NCH Broadcasts 32**

## **Appendix A : ra.xml 33**

**ra.xml 33**

## **Notices 37**

**Notices 37**

**COPYRIGHT LICENSE: 38**

**Trademarks 38**

## **Index 40**

# About This Manual

This manual provides information about configuring the Image Services Resource Adapter (ISRA) version 3.4.0 on JBoss platform. Refer the separate ISRA Installation Guide for Installing ISRA 3.4.0.

## Conventions Used in the Document

The table lists the formatting conventions used in this document.

<u>Conventions</u>	<u>Description</u>
Fixed Size font	Used for commands entered at the system command prompt.
Arial font	Used for important notes
<b>Bold</b>	Occasionally used to refer to portions of user interface, such as the <b>Next</b> button or the <b>Install</b> button

## Related References

For all ImageViewer parameters please refer to the FNImageViewer documentation provided with ISRA installation media.

<ISRA-home>\ISRA340\FNImageViewer\docs

For all P8 System Manager related information, please refer to P8 System Manager Documentation, provided with ISRA installation media.

<ISRA-home>\ISRA340\SystemManager\docs

## Comments and Suggestions

IBM FileNet invites all customers to communicate with the [Documentation group](#) on any question or comment related to IBM FileNet manuals and online help.

Send email to [comments@us.ibm.com](mailto:comments@us.ibm.com). We will make every effort to respond within one week. Your suggestions help us improve the products we deliver.

# ISRA Deployment

This chapter describes the deployment of ISRA on JBoss Application Server.

---

**Note** The installation procedure for JBoss Application Server and configuring it for clustered environment is outside the scope of this document, and it is assumed that the required settings and configurations are satisfied.

---

The ISRA module is a set of Java interfaces/classes that implement J2EE Connector Architecture-specified contracts and the EIS specific functionality. ISRA plugs into a JBoss Application Server in a modular manner.

## Deployment Requirements

This section lists the minimum software and hardware requirements for successful deployment of ISRA on JBoss Application Server.

---

**Caution** Do not copy xml contents straight from the Deployment Guide. All the xml content related to the deployment of ISRA must be created manually or a valid existing file should be used.

---

## Hardware Requirements

- For additional information on JBoss, visit <http://www.jboss.org/>
- ISRA installation will require approximately 120 MB free disk space

## Software Requirements

- JBoss 4.0.x Application Server on Microsoft Windows 2003 Server, Sun Solaris 9/10, HP-UX 11i Patch Bundle B.11.11, RedHat Linux AS 3.0/4.0 and IBM AIX 5.3 SP3 (JBoss 4.0.4 only)
- IBM FileNet IS 3.6 SP2 and above

## Deploying ISRA in a Standalone Environment

### Deploying ISRA.rar

The steps to deploy the **ISRA.rar** file are:

1. Extract ra.xml from ISRA.rar.
2. Change the value(s) for configurable properties in ra.xml. For more information, refer [Configurable ra.xml Properties](#) section.
3. Update **ra.xml** in **ISRA.rar** with the new file.

4. Copy **ISRA.rar** to <jboss installation directory>\server\default\deploy directory.
5. Deploying ISRA is completed.
6. Next step is to complete the Mandatory steps necessary for ISRA. Refer to [Mandatory Requirements for ISRA](#) section before restarting the Application Server.

## ISRA RA Descriptor (JBoss specific)

1. Create the **isra-ds.xml** file using a preferred text editor. The **isra-ds.xml** file should resemble this specimen:
 

```
<?xml version="1.0" encoding="UTF-8"?>
<connection-factories>
<tx-connection-factory>
  <jndi-name>ISCF</jndi-name>
  <rar-name>ISRA.rar</rar-name>
  <connection-
definition>javax.resource.cci.ConnectionFactory</conn
ection-definition>
</tx-connection-factory>
</connection-factories>
```
2. Copy **isra-ds.xml** to <jboss installation directory>\server\default\deploy directory.
3. Start the JBoss Server.
  - On Windows server, execute the **run.cmd** or **run.bat** script on the command prompt using:
 

```
<JBoss Installation Directory>\bin\run.cmd
```

Or

```
<JBoss Installation Directory>\bin\run.bat
```
  - On a UNIX system, login as the root user and execute the **run.sh** script in the command prompt using:
 

```
# cd <JBoss Installation Directory>\bin\
# ./run.sh
```

## Deploying ISRA in a Clustered Environment

### Deploying ISRA.rar

The steps to deploy the **ISRA.rar** file are:

1. Extract ra.xml from ISRA.rar.
2. Change the value(s) for configurable properties in ra.xml. For more information, refer [Configurable ra.xmlProperties](#) section.
3. Update **ra.xml** in **ISRA.rar** with the new file.
4. Copy **ISRA.rar** to <jboss installation directory>\server\<server instance directory>\deploy directory of every server instance, which is a part of the cluster.



---

**Note** Alternatively, copy **ISRA.rar** in farm directory (for example JBOSS-HOME\server\node1\farm) of any server after starting each server instances. This is known as Hot Deployment.

---

5. Start the JBoss server instances with the `-c` option of `run.bat` (for example: `run -c node1`).
6. Deploying ISRA completed.
7. Next step is to complete the Mandatory steps necessary for ISRA. Refer to [Mandatory Requirements for ISRA](#) section before restarting the Application Server.

## ISRA RA Descriptor (JBoss specific)

1. Create the **isra-ds.xml** file using a preferred text editor. The **isra-ds.xml** file should resemble this specimen:

```
<?xml version="1.0" encoding="UTF-8"?>
<connection-factories>
<tx-connection-factory>
  <jndi-name>ISCF</jndi-name>
  <rar-name>ISRA.rar</rar-name>
  <connection-
definition>javax.resource.cci.ConnectionFactory</conn
ection-definition>
</tx-connection-factory>
</connection-factories>
```

---

**Note** Change the permission of `isra-ds.xml` to 777 In case of UNIX platforms.

---

2. Copy **isra-ds.xml** to `<jboss installation directory>\server\<server instance directory>\deploy` directory of every server instance, which is a part of the cluster.

---

**Note** For Hot Deployment, `isra-ds.xml` also needs to be copied (like `ISRA.rar`) to the farm directory (for example: `JBOSS-HOME\server\node1\farm`) of any server after starting each server instance.

---

3. Start the JBoss server instances with the `-c` option of `run.bat` (for example `run -c node1`).

- On Windows server, execute the **run.cmd** or **run.bat** script on the command prompt using:

```
<JBoss Installation Directory>\bin\run.cmd
```

Or

```
<JBoss Installation Directory>\bin\run.bat
```

- On a UNIX system, login as the root user and execute the **run.sh** script in the command prompt using:

```
# cd <JBoss Installation Directory>/bin/
# ./run.sh
```

## Mandatory Requirements for ISRA

The mandatory requirements for ISRA 3.4.0 are:

1. Include **listener.jar** and **log4j-1.2.8.jar** in the classpath of JBoss server. To include the jar files in classpath, navigate to **bin** folder of JBoss.
  - On Windows, open **run.bat** or **run.cmd** file in a preferred text editor and include the files in classpath.
  - On UNIX platforms, open **run.sh** file in a preferred text editor and include the files in classpath.
  - Use ":" as classpath separator in UNIX and ";" for Windows.

---

**Note** There is no need to explicitly include the classpath of log4j in JBoss Server 4.2.

---

2. Include the folder in which **WinPerfMon.dll** is present in the system path in case of Windows operating system. On UNIX platforms, this file is not required.
3. Enter the initial and maximum JVM heap size as 512.

### Explanation for Terminal name and ISRALock folder

The first instance of ISRA deployed on an Application Server creates a folder named "ISRALock" and a **file named** <sup>1</sup> "ISRALock.0" inside that folder. The counter "0-9 and a-z" in the file name "ISRALock.0" increments subsequently with each new deployment of ISRA and the same is appended to the terminal name generated for an ISRA instance. This folder is created in the path resolved by the system property "user.dir", which is the same path where the ISRA logs are generated. This functionality has been introduced in ISRA 3.2.1 to support vertical cluster environment.

Terminal name identifies ISRA instance with a unique id so that IS can distinguish each ISRA client uniquely for communication. Earlier, the terminal name used to be of the form "SV<instance number>.<Counter1>@IPAddress". In case of a vertical cluster, ISRA can be deployed across the cluster on a single machine. But in such a scenario, all the managed server instances in a cluster will have the same ISRA instance deployed and will generate the same terminal name, as the "IPAddress" and "instance number" will be same for all the ISRA instances. The current format of a terminal name generated by ISRA is "RA<instance number>.<Counter1>.<Counter2>@IPAddress", where Counter2 is the counter appended to the files created in the ISRALock folder as mentioned above. The files created in the ISRALock folder will be automatically removed if the managed servers are gracefully shut down (in case of proper JVM shutdown).

See [Configurable ra.xml Properties](#) section below for "[DeploymentInstance](#)" [property setting](#).

---

<sup>1</sup> ISRALock.0 (0-9 and a-z) would be created in ISRA 3.4 FP3 and above. Prior versions of ISRA would have files created as ISRALock.0000 (0000-9999).

# ISRA Configuration

This chapter describes how to configure ISRA on JBoss Application Server, after it is deployed.

## Configuring Deployed ISRA

This section describes how to edit the ISRA deployment descriptor:

ISRA uses the J2EE Connector Architecture deployment descriptor, called **ra.xml** to define its operational parameters. The deployment descriptor is defined by Sun Microsystems in the J2EE Connector Architecture 1.0 specification. It describes the Resource Adapter related attributes, types, and deployment properties using a standard Document Type Definition (DTD).

To edit the ISRA deployment descriptor:

1. Change directory to ISRATemp. Remove all files from ISRATemp directory and copy **ISRA.rar** in it.

In the ISRATemp directory, run the command `jar -xvf ISRA.rar`

This command will cause the **ISRA.rar** file to be extracted in the current directory.

2. Select the **ra.xml** file in the META-INF folder and edit it in a preferred text editor.

Refer [Configurable ra.xml Properties](#) section for more information on setting values for the configurable properties.

---

**Note** It is mandatory to configure DomainName and OrganizationName properties, as ISRA needs these properties to access the IS. DomainName and OrganizationName are the second and third part of the three-part IS library name (for example: DefaultIMS:FileNetIS:FileNet).

---

3. After modifying, save the **ra.xml** file in the same folder.
4. To reconstruct the **ISRA.rar** file enter the command from ISRATemp directory `jar -cvf ISRA.rar *`

This command will create **ISRA.rar** file with modified **ra.xml** bundled into it. Replace the deployed ISRA.rar file with the new file.

## Changing ISRA Specific Parameters

### Configurable ra.xml Properties

---

**Note** Please note that all properties described in the deployment descriptor are mandatory and no property should be removed. Default values should be specified for properties that users do not want to use.

---

The configurable properties to be set (modified) in **ra.xml** are:

- [DomainName](#)
- [OrganizationName](#)
- [LoggingLevel](#)
- [LoggingMode](#)
- [PageBufferSize](#)
- [CacheRefreshInterval](#)
- [SecurityCacheMode](#)
- [MetaDataCacheRefreshMode](#)
- [LogFileNames](#)
- [LogFileSize](#)
- [LdapImplClassName](#)
- [LdapImplClassString](#)
- [InherentLogin](#)
- [DeploymentInstance](#)
- [PCHLogging](#)
- [AllowAnonymousUser](#)
- [RPCLogging](#)
- [ClientCodepage](#)
- [GMTEnabled flag](#)
- [ISLocale](#)
- [IgnoreObjectBusyMsgInDocMigration](#)

## DomainName

This is the domain name of the IS server. The default value of DomainName is FileNetIS. It should be set according to the operational environment. Change this property to the domain name of the IS.

## OrganizationName

This is the IBM FileNet IS organization name. The default value of OrganizationName is IBM. It should be changed according to the operational environment.

## LoggingLevel

This is an integer representing the amount of log information to be generated. The values are dynamically updatable by using the ISRA Console. The valid values are:

Logging Level	Description
-1	Disables ISRA Logging
0	Only Error and Warning messages will be logged by ISRA
1	Informative messages will also be logged by ISRA

2	Prints debug message in the log
---	---------------------------------

The default value of LoggingLevel is 0. It can be modified to other valid Logging Levels. It is recommended to keep the logging level at 0. LoggingLevel can be increased if user encounters a problem while accessing ISRA through the application.

## LoggingMode

This is an integer representing the logging mode. The valid values are:

Logging Mode	Description
0	No Logging
1	Only console logging
2	Only file logging
3	Both console logging and file logging

The default Value of LoggingMode is 3. It can be changed to other valid values according to the operational environment.

## PageBufferSize

This is an integer value specified in kilobytes (KB). It specifies the chunk size used by ISRA to transfer page data to and from IS. The default value is 64 KB. Specifying a higher value will require more memory for the Application Server process, and a low PageBufferSize will mean more trips to IS. The value should be set to an average page size on the target IS. The document buffer size on IS and ISRA should match to optimize image transfer performance.

## CacheRefreshInterval

This is an integer value specified in minutes. ISRA stores meta-data information like Document class, Indices, menu details etc. in a local cache for faster retrieval. ISRA refreshes the cache information based on the CacheRefreshInterval value. The default value is 30 minutes.

## SecurityCacheMode

This parameter can take two values:

<u>Value</u>	<u>Setting</u>
1	Caches both users and Groups
2	Caches only groups

## MetaDataCacheRefreshMode

This parameter can have a value in the range of (0-15).

<u>Value</u>	<u>Setting</u>
0	No Metadata cache refresh

- 1 Printer cache refresh only
- 2 Document class cache refresh only
- 4 Key Fields cache refresh only
- 8 Menu Value cache refresh only
- 15 is the default value for this parameter, which will refresh all metadata.

Add corresponding values to get a combination of data.

For example,  $1+2 = 3$  Printer and Document class data

$1+2+4 = 7$  Printer, Document class, Key Fields data

$0+1+2+4+8 = 15$  all data

## LogFileName

The LogFileName is a string containing the name and path of the log file. The default value of LogFileName is **ISRA.log**. A complete or relative path can be provided to create the log file at a specific location on the disk.

To ensure that each ISRA instance has a unique log file, the following steps will be followed:

- Configurable property “DeploymentInstance” will be read from ra.xml and appended to the log file name. If not specified, the default value “1” will be used as the deployment instance of ISRA.
- The unique ID used for terminal ID generation in ISRA will be appended to the log file name.

For instance, if the log file name configured in ra.xml is **ISRA.log** and the deployment instance is 1, the modified log file name would be **ISRA\_1\_0.log**. Here, “0-9 and a-z” is the unique ID<sup>2</sup> generated at run time. This ensures a unique name of the log file for each instance of ISRA.

## LogFileSize

This is an integer representing the maximum size of the log file in Megabytes (MB). When the size of the file reaches this maximum limit, the log file is renamed and a new file is created with the same name. For example, **ISRA\_1\_0.log** is renamed to **ISRA\_1\_0\_1.log**, and a new file **ISRA\_1\_0.log** is created. The default value of LogFileSize is 5MB. Automatic purging of old ISRA log files has been implemented leaving behind only 5 latest versions.

## LdapImplClassName

It is the name of the Implementation class for LDAP Authentication. This parameter contains the complete path of the LDAP Implementation class to be entered along with the LDAP Implementation Class Name.

The default value is ‘com.filenet.is.ra.fnis.FN\_IS\_IPlanetImpl’.

---

<sup>2</sup> The modified log file name would be ISRA\_1\_<unique-ID>.log. The value for unique ID are 0-9, a-z in ISRA 3.4 FP3 and above. Older versions of ISRA use the unique ID value between 0000-9999.

In addition, LDAP implementation has been provided for Microsoft Active Directory Server for Windows 2003 and Novell NDS 8.7.3. The value of the property for LDAP implementation for Active directory is `com.filenet.is.ra.fnis.FN_IS_ActiveDirImpl` and for Novell NDS 8.7.3 is `com.filenet.is.ra.fnis.FN_IS_NovellNDSImpl`.

## LdapImplClassString

This parameter is a general string that takes in all the LDAP Server specific parameters required for authentication. It takes the following inputs:

- Server Name – Name of the Server/ Machine on which LDAP Server exists.

---

**Note** In case that the LDAP server is located on a different subnet, it may be necessary to enter IP address or a full domain name.

---

- Port Number – LDAP Server's port number used for transactions.
- User Path – Organization unit under which the users are filed in the LDAP Directory Server.

The three parameters must be separated by semicolon and must appear in the order - server name, port number and user path. An example of LDAPImplClassString is:

- **For Active Directory**  
`filenetserver;389;ADS.com`
- **For IPlanet**  
`filenetserver;389;ou=ISRA, dc=odc, dc=filenet, dc=com`
- **For Novell NDS**  
`filenetserver;389;ou= ISRA, ou=odc,ou=filenet,o=com`

## InherentLogin

To use LDAP security, the value will be set to 1 from the default value 0.

## DeploymentInstance

This is the instance number of ISRA that is being deployed. It is a user defined number between 1 and 100. The default value for this parameter is 1 when none is specified. The maximum is 100, which means that 100 different instances of ISRA can be deployed in a single JBoss instance (installation).

Each deployment/JNDI of ISRA on the same Web/Application server requires its own instance number. For example, there can be 2 ISRA applications deployed on the same Web/Application server. Each deployment would require its own instance number and JNDI name. This number is used on the IS server to differentiate between multiple connections from the same IP address of the Web/Application server.

IS always expects unique IDs from ISRA clients, and when it receives duplicate IDs from ISRA, it will reject communication.

So it is always advised to increment the deployment instance number when another instance of ISRA is deployed to achieve its unique id.

Format of the terminal ID is used by ISRA and IS in distinguishing a Unique ISRA instance.

RXXYYYZ@<ip-address>

Where,

XX = 899 + DeploymentInstance(ra.xml) (Converted to Base 36 and used by ISRA)

YYY = Counter that increments with the creation of a new LogonSession object (Values in base 36)

Z = Unique ID generated per ISRA instance. Introduced to support ISRA in clustered environment (Unique ID is a number in Base 36)

<ip-address> = IP Address of the machine where ISRA is deployed.

The Unique ID is obtained from the place holder file ISRALock.z (where Z=Unique ID) that is created in the ISRALock folder. Each cluster member creates its own place holder file (like ISRALock.0, ISRALock.1 and so on) within the common ISRALock folder.

## PCHLogging

This is a String parameter to enable/disable PCH logging in ISRA. The default value for this is "Disabled". PCHLogging enables user to log performance monitoring data of IS.

## AllowAnonymousUser

It's a Boolean value to allow Anonymous user logon through LDAP, when blank password is passed from user/client. The default value of this parameter is "false".

## RPCLogging

This is an integer representing the RPC logging level. The valid values are:

RPCLogging	Description
0	No Logging
1	File Logging

The default Value of RPCLogging parameter is 0. It can be changed to 1 if RPC Logging is required.

The RPC LogFileSize is taken as double the size of that of ISRA LogFileSize. So, when the size of the RPC log file reaches its maximum limit (10mb), the log file is renamed, and a new file is created with the same name. For example, ISRA\_1\_0000\_RPC.log is renamed to ISRA\_1\_0000\_RPC\_1.log, and a new file ISRA\_1\_0000\_RPC.log is created. Automatic purging of old ISRA RPC log files has been implemented leaving behind only 5 latest versions.

## ClientCodepage

This is the code page for encoding Text and Sticky Note annotations. The default value for this property is blank.



On Microsoft Windows platform, the Locale character set is the Windows Code Page (1252 for US English and Western Europe) whereas on a UNIX platform, it is an ISO 8859-X character set (ISO 8859-1 for US English and Western Europe).

Thus, if the client locale character set, is Windows Code Page based (for example: Cp1252 for US English and Western Europe), and the server is UNIX based, then Windows Code Page should be used for encoding the annotations data before committing to the server. This is because; there is an inconsistency in characters mapping between Microsoft Windows Code Pages and the equivalent ISO 8859-X series. For instance, Code page 1252 is built on ISO 8859-1 but uses the range 0x80-0x9F for extra printable characters rather than the C1 control codes used in ISO8859-1.

For Annotations data, ISRA internally retrieves the IS character set and uses the equivalent Windows Code Pages for the following ISO encodings.

ISO Encoding	MS Windows counterpart
ISO8859_1	Cp1252
ISO8859_2	Cp1250
ISO8859_5	Cp1251
ISO8859_6	Cp1256
ISO8859_7	Cp1253
ISO8859_8	Cp1255
ISO8859_9	Cp1254
ISO8859_13	Cp1257

---

**Note** Specifying an incorrect code page may lead to inconsistency and/or corruption of Annotations data.

---

### GMTEnabled flag<sup>3</sup>

This parameter takes two values:

1. true
2. false

The default value of this parameter is false.

**Setting “GMTEnabled” to false:** When the flag is set to false, it is assumed that the ISRA client application is not “GMT Enabled” i.e. client applications will not do any timezone conversion. ISRA returns the date committed on the IS to client applications after adjusting the difference between the Application Server timezone and the GMT Timezone. As a result, the dates displayed in applications will be in accordance with the dates committed on the IS.

**Setting “GMTEnabled” to true:** When the flag is set to true, it is assumed that the client application is “GMT Enabled” i.e. client applications will display the

---

<sup>3</sup> GMTEnable flag is available from ISRA 3.4 FP3 and above.

dates in GMT. In this case, ISRA returns the date committed on the IS in the GMT timezone, without any adjustment. Set this value to true only if you have made changes to your application after of an upgrade to ISRA 3.3 FP6 or ISRA 3.4 FP2.

## ISLocale

This is a String parameter which represents the ISRA Locale. The administrator can set the value of this configurable property as that of the IS locale. It is a lower-case two-letter code as defined by ISO-639. The default value of this parameter is “en” (English locale). The ResourceBundle used in ISRA will depend on the value set by the user for this property.

## IgnoreObjectBusyMsgInDocMigration

This is a Boolean parameter which can be set to true to ignore the [77,0,11 the object is busy] error, incase of DocMigration. The default value for this parameter is false.

## Configuring JBoss Specific Entities

Once the configurable properties are set for ISRA, parameters specific to the JBoss Application Server, need to be configured. The configurable properties for a Connector in JBoss are:

- MaxSize
- MinSize
- IdleTimeoutMinutes

These properties can be configured by accessing the JMX console Web application using the URL: <http://<server-name>:8080/jmx-console/index.jsp>

---

**Note** The above mentioned parameters may be configured in the **isra-ds.xml** file to be reflected in the administrative console.

---

## Configuring Multiple IS Servers with ISRA

To configure ISRA to access multiple IS servers:

1. Deploy a **new ISRA instance for each IS** that the user wants to connect. Before deploying the second (and subsequent) ISRA, rename the **ISRA.rar** file. The new ISRA will overwrite the previously deployed ISRA configuration settings if the .rar file is not renamed.
2. Ensure that the renamed **ISRA.rar** has the .rar file extension.
3. Configure the new ISRA and enter a DomainName and OrganizationName in **ra.xml** before deployment for connecting to the target IS.
4. Create a new **<new name>-ds.xml** file in the following directory:  
`<jboss installation directory>\server\default\deploy`

# Configuring and Deploying ISRA Console and Sample Application

## ISRA Console

The LoadISRA utility from ISRA 3.4.0 has now been replaced with the ISRA Console (in ISRA 3.4 fixpack 1 and above). This ISRA console has been developed to show the ra.xml properties in a well formatted table and also features buttons to enable/disable/edit logging levels dynamically.

The dynamic update of logging allows the user to enable and change logging levels while the ISRA is running and without needing to restart the appserver. The console also features links to launch Sample Application and to view JVM statistics.

This console is available as a Web Module (ISRAConsole.war) within ISRAConsole.ear and gets deployed automatically during the deployment of ISRAConsole.ear

## Configuring Sample Application

The ISRA console and Sample Application are packaged within a single Enterprise Application Archive File (**ISRAConsole.ear**).

**ISRAConsole.ear** consists of:

- Two Web modules:
  - ISRASampleWEB.war (ISRA Sample Application)
  - ISRAConsole.war (ISRA Console)
- Deployment Descriptor (application.xml)

This chapter illustrates the deployment and configuration of the ISRA Console and Sample Application on JBoss Application Server 4.0.x.

---

**Note** ISRA product media comes with an IBM FileNet Image Viewer, which can be used to display the TIFF, JPEG, BMP, and other supported file formats on a Java-enabled browser.

This Sample Application is intended solely for illustrative purposes and it should not be expected to perform useful work, or be used for production deployment. This Sample Application is to be used strictly as reference material.

---

It is assumed that ISRA is deployed and configured for the target IS.

In ISRA 3.4 fixpack 1, a new properties file "jndiISRA.properties" has been introduced and it gets created in Application Server home directory. The JNDI names of connection factories mentioned in this properties file, which will be used by Sample application to display on the login page. Two JNDI names "ISCF" and "ISCF1" are mentioned in the file by default. Additional library names can be included by providing comma separated entries. The property file is mandatory and it should contain the same names as the JNDI Binding Paths specified for the configured ISRA ConnectionFactories.

For configuring Sample application, certain properties need to be updated in the web.xml of the **ISRASampleWEB.war**.

Follow the below steps for extracting **web.xml** from **ISRASampleWEB.war**.

1. Extract **ISRASampleWEB.war** from **ISRAConsole.ear**.
2. Extract **web.xml** from **ISRASampleWEB.war**.
3. Add distributable element just before <display-name> element in web.xml.  
For example:

```
<web-app >
    <distributable/>
    <!-- ... -->
</web-app>
```

---

**Note** However, please note that this modification is required only when deploying Sample Application in cluster environment.

---

4. To enable extended annotation functionality modify the following parameters in **web.xml**:
  - a. Change env-entry-value for "DOCCLASSNAME" to the document class configured in the IS for digital signatures.  

```
<env-entry-value>digDocClass</env-entry-value>
```
  - b. Change env-entry-value for "MAXROWS" to the number of records to be fetched from the given document class.  

```
<env-entry-value>200</env-entry-value>
```
5. To enable Remote Printing functionality modify the following parameters in **web.xml**:
  - a. Change env-entry-value for "USEPRINTVIEWOPTION" to either Yes or No. This value will determine whether to honor the print/view preference set in the **web.xml** or to take the value returned by ViewOne. Default value is No.  

```
<env-entry-value>No</env-entry-value>
```
  - b. Change env-entry-value for "PRINTVIEWOPTION" to either View Only =1, Print Only =2, Print/View =3. This value indicates the value of Print/View. The default value is 3.  

```
<env-entry-value>3</env-entry-value>
```

---

**Note** If the PRINTVIEWOPTION is set to 3 (default) then the sticky note would be saved as a normal sticky note. If PRINTVIEWOPTION value is specified as 1 or 2 then the annotations will be saved as an extended annotation (**Extended annotations** are non-standard annotations which are saved with a class name parameter (F\_CLASSNAME) of "Proprietary", a class id property (CLASS\_ID) of {A91E5DF2-6B7B-11D1-B6D7-00609705F027} and a subclass name property

(*F\_SUBCLASS*) that describes the annotation).

The value of PRINTVIEWOPTION would be honored for each sticky note individually, and not for all the sticky notes on a document as a whole.

Thus, the setting for PRINTVIEWOPTION would be processed for either a new annotation being added or an existing annotation being modified.

---

6. Update **web.xml** in **ISRASampleWEB.war**.
7. Add **jboss-web.xml** resembling to the following specimen into the WEB-INF folder of the ISRASampleWEB.war for session replication.

---

**Note** This step is required when Sample Application is deployed in cluster environment only.

---

```
<jboss-web>
<replication-config>
  <replication-trigger>SET_AND_NON_PRIMITIVE_GET
</replication-trigger>
  <replication-granularity>SESSION</replication-
granularity>
</replication-config>
</jboss-web>
```

8. Update **ISRASampleWEB.war** in **ISRAConsole.ear**.

## Deploying ISRA Console and Sample Application in Standalone Environment

This section describes how to deploy the “ISRA console and Sample” Application on a JBoss Server to access ISRA in a managed environment. It is assumed that ISRA is deployed and configured for the target IS. To deploy the ISAR Console and Sample Application, copy **ISRAConsole.ear** to `<jboss installation directory>\server\default\deploy directory`.

## Deploying ISRA Console and Sample Application in Clustered Environment

This section describes how to deploy the “ISRA console and Sample Application” on a JBoss Server to access ISRA in a managed environment. It is assumed that ISRA is deployed and configured for the target IS. To deploy the ISRA Console Sample Application, copy **ISRAConsole.ear** to `<jboss installation directory>\server\<server instance directory>\deploy directory` of every server instances, which is a part of the cluster.

---

**Note** Alternatively, copy **ISRAConsole.ear** in farm directory (for example: “JBOSS-HOME\server\node1\farm”) of any server after starting each server instance. This is known as Hot Deployment.

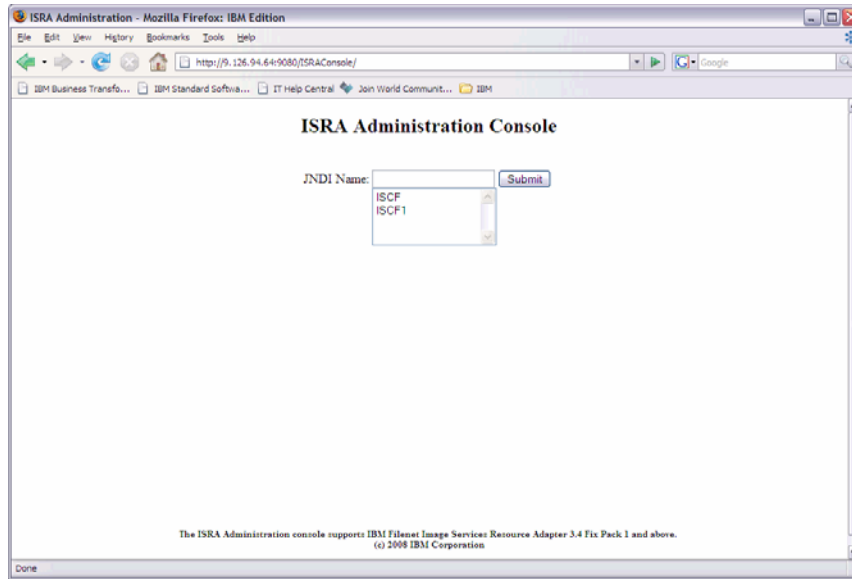
---

## Using the ISRA Console

To access the ISRA Console, follow the steps below:

1. Go to the location where the application is available  
(<http://<AppServerName>:<AppServerPort>/<ApplicationContextRoot>>)ApplicationContextRoot is **ISRAConsole**.

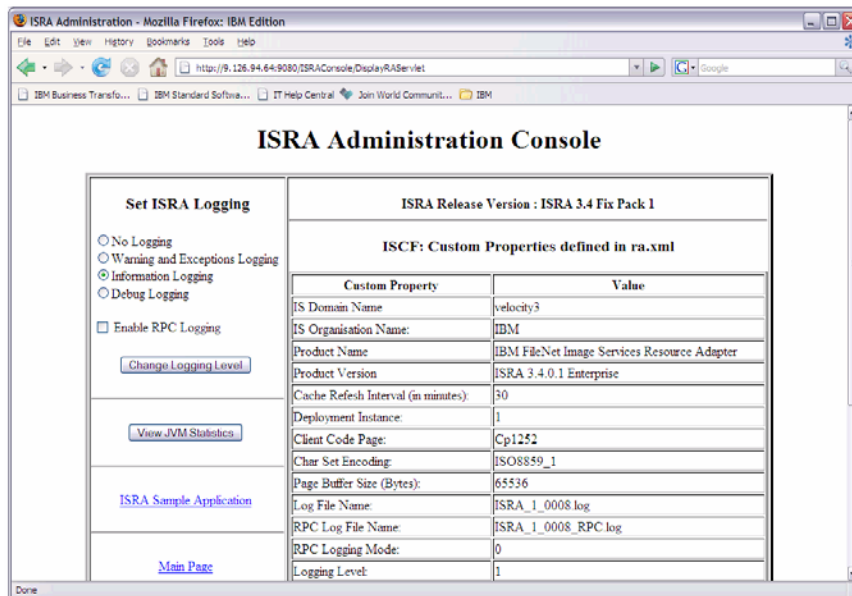
For example : <http://9.126.94.39:9088/ISRAConsole/>



2. Enter the JNDI name of the library and click **Submit**.

A page showing the current values configured in the ra.xml is shown along with controls to edit the ISRA logging levels.

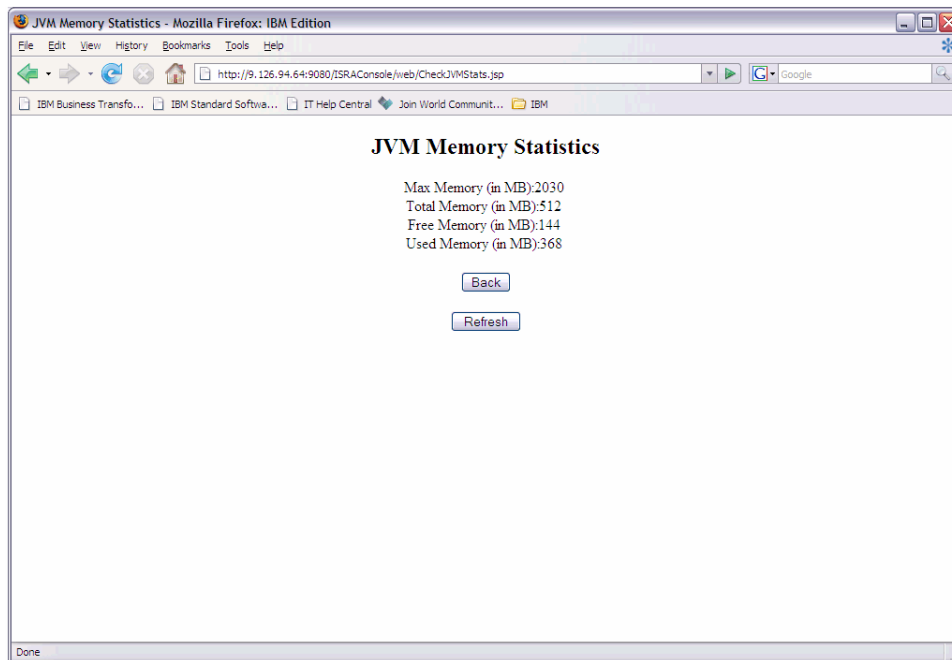
A link has been provided on the page, to access the ISRA Console and Sample Application.



Changes to the logging level settings are applied to ISRA with immediate effect. The changes to logging levels are updated in the properties displayed on the screen.

The changes are valid till the application server is recycled. When the application server is restarted the log level settings specified in the ra.xml are used.

3. The JVM statistics can be used to study the memory usage in the Application Server JVM.



## Deploying IBM FileNet Image Viewer in Standalone Environment

This section describes how to deploy the IBM FileNet Image Viewer, used by the ISRA Sample Application to display documents of specific mime types (TIFF, JPEG and BMP). Skip this section, if configuring IBM FileNet Image Viewer with the ISRA Sample application is not required. To deploy IBM FileNet Image Viewer, copy **FNImageViewer.ear** to `<jboss installation directory>\server\default\deploy` directory.

## Deploying IBM FileNet Image Viewer in Clustered Environment

This section describes how to deploy the IBM FileNet Image Viewer, used by the ISRA Sample Application to display documents of specific mime types (TIFF, JPEG and BMP). Skip this section, if configuring IBM FileNet Image Viewer with the ISRA Sample application is not required. To deploy IBM FileNet Image Viewer, copy **FNImageViewer.ear** to `<jboss installation directory>\server\<server instance directory>\deploy` directory of every server instances, which is a part of the cluster

---

**Note** Alternatively, copy FNImageViewer.ear in farm directory (for example: "JBOSS-HOME\server\node1\farm") of any server after starting each server instance. This is known as Hot Deployment.

---

## IBM FileNet Image Viewer Quick Start Feature

The Quick Start feature provides a mechanism for initializing a Web browser, Java, and Image Viewer session. The background task required to initialize an Image Viewer session is done at the time when the Web browser is initialized, prior to the time when Image Viewer is actually required. This reduces the startup time of Image Viewer. This feature is supported on various Operating Systems, such as Microsoft Windows 98, NT, 2000 Professional, and XP. The only Web browser supported for this feature is Internet Explorer. The Quick Start feature is not enabled by default; it needs to be manually enabled.

### Enabling Quick Start Feature

To enable quick start feature:

1. Extract FNImageViewer.ear from the patch.
2. Check the availability of "quickstart.htm" file in the FNImageViewer.war extracted from FNImageViewer.ear
3. Extract ISRAConsole.ear from the patch.
4. Extract ISRASampleWEB.war file from ISRAConsole.ear.
5. Extract 'DisplayDocument.jsp' file from ISRASampleWEB.war.
6. Add the highlighted tag to the file as shown in the code segment below:

```
<APPLET CODEBASE = "/FNImageViewer/FNJavaV1Files" ARCHIVE
="ji.jar"
CODE = "ji.applet.jiApplet.class" NAME = " viewONE" WIDTH =
"100%"
HEIGHT = "97%" HSPACE = 0 VSPACE = 0 ALIGN = middle
MAYSCRIPT="true">
```

```
-- -- --
```

```
<%if(RAVersion2.equalsIgnoreCase("Enterprise")){%>
```

```
-- -- --
```

```
<param name="UserId" value="<%=userId%>">
<param name="quickstartURL" value="quickstart.htm">
<%/>*End of if condition where
RAVersion2.equalsIgnoreCase("Enterprise")*/%>
</Applet>
```

7. Save and close the file.
8. Bundle the new file into ISRASampleWEB.war
9. Bundle the WAR file into ISRAConsole.ear.
10. Undeploy the old ISRAConsole.ear
11. Deploy the new ISRAConsole.ear.
12. Open a document in IBM FileNet Image Viewer.



13. Right-click on the document to open the context menu.
14. From the context menu, click **Preferences > QuickStart** to enable the Quick Start feature. A 'tick' icon appears on the left-hand side of the Quick Start menu indicating that the feature is enabled.

Enabling the Quick Start feature will add an icon within the System tray (bottom right of the Windows Desktop) and a menu item "IBM FileNet JavaView QuickStart for Internet Explorer" under **Start > Programs > Startup menu**. After enabling Quick Start, if the machine is rebooted, the Quick Start feature remains enabled. Disabling the Quick Start feature will remove the Quick Start icon from the System tray and the menu item "IBM FileNet JavaView QuickStart for Internet Explorer" from the **Start > Programs > Startup menu**. The 'tick' icon on the left-hand side of the Quick Start menu (right click **document > Preferences > QuickStart**) indicating that the feature is enabled will disappear.

## Known Issues in the Quick Start Feature

Following are the known issues in IBM FileNet Image Viewer:

- Web session will not end until Quick Start feature is disabled or the user explicitly logs out of the session with the Web server. If the Quick Start feature is enabled, closing the browser window(s) will not terminate the session with the Web server.
- If Quick Start is enabled and Internet Explorer is not the default browser, then on machine re-login or reboot, a message will display asking whether to make Internet Explorer the default browser. To avoid the message:
  1. Open a browser window.
  2. Select **Tools > Internet Options...**
  3. Click the **Programs** tab and deselect the check box corresponding to "Internet Explorer should check to see whether it is the default browser".
  4. Click **Apply**.
  5. Click **OK**.
- If Always button is not selected on the security dialog box of the security certificate associated with the Image Viewer, then on machine re-login or reboot, a security dialog box is displayed.
- QuickStart feature is not available in Image Viewer if web server is accessed using IP address instead of host name in the URL.

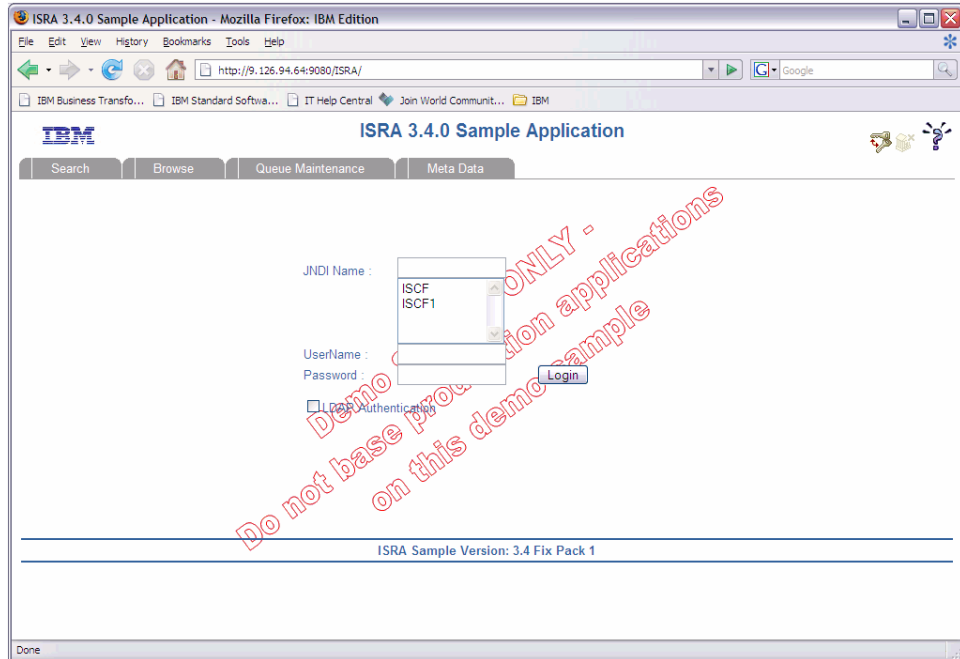
## Testing Sample Application

After the ISRA Sample Application is started, the steps to verify the deployment and access the ISRA Sample Application are:

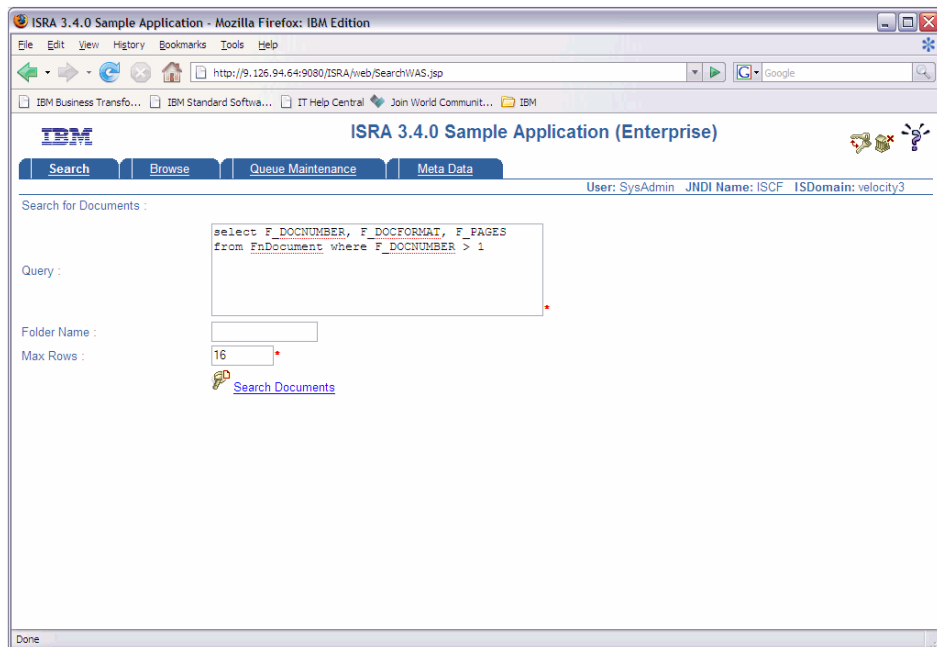
1. Open a Web browser and enter the URL  
`http://<server:port>/context_root`  
For example: `http://9.126.94.39:9088/ISRA/`

The Web application context\_root is case sensitive. On a JBoss Server, the default port number is 8080. The default context\_root of the Sample Application is ISRA.

The Login screen appears:



2. Enter valid **Username** and **Password** for the configured IS (check configured ConnectionFactory for IS details) and click **Login**.



3. Click the **Help (?)** icon, on the Sample Application page, for details on the interaction parameters and options.

## LDAP Configuration

In addition to direct IS logging, ISRA 3.4.0 also supports LDAP Authentication by third party Servers.

It is necessary to map users present on the LDAP Server to the IS before using LDAP Authentication.

---

**Note** The installation of LDAP Server and creation of users on the LDAP machine are out of the scope of this document.

---

IBM FileNet provides two utilities - ldap\_export and ldap\_import, to map existing users on the LDAP Server to the IS. These utilities are part of the IS package and must be executed on the machines running the LDAP Server and the IS.

The ldap\_export utility is used to export usernames on the LDAP Server to an xml file. Whereas, the ldap\_import utility imports usernames that have been mapped to the xml file and creates corresponding users on the IS.

It is mandatory that the ldap\_import algorithm and the xml file be present on the same machines, where IS exists. The ldap\_import algorithm uses a hashing algorithm to generate user passwords for the IS.

### Mapping Existing LDAP Server Users to IS

To configure user IDs in an IBM FileNet IS library:

1. Create user entries on the LDAP server. The user attribute "uid" will be used to create a user on IS. The remaining attributes (including "password") can be assigned any value.
2. Use the LDAP\_EXP.exe utility to export the user entries created into an XML file.
3. LDAP\_EXP program has the following parameters options:

Option	Description
s <server>	LDAP server name or IP address, required value.
p <port>	LDAP port number, optional value, 389 is default.
d <binddn>	LDAP administrator bind domain name (DN), required value.
w <bindpw>	LDAP administrator bind password, required value.
t <ldap server type>	Required value for server type: msft – Microsoft Active Directory sun – Sun One Directory (iPlanet) nov – Novell eDirectory(NDS).

Option	Description
	IBM – IBM Directory.
b <basedn>	LDAP Base DN, optional value.
g <grouplist filename>	Group list file for input, optional value.
o <XML output filename>	XML output filename, optional value.
l <log filename>	Log Filename to use, optional value.
l	Check for special characters on <id> tags only
E	Remove all escape characters – '\.
k	Use paged results. Windows to AD only
Z	Use secure socket connection
x <grouplist filename>	Group list file name for output, optional value.
v	Verbose log output.
c1 <user object class>	Class type for User, default is 'person'.
c2 <group object class>	Class type for Group, default is 'groupofuniquenames'.
a1 <user attribute>	Attribute to be used for user; default is 'dn'.
a2 <group attribute>	Attribute to be used for group; default is 'dn'
a3 <member attribute>	Attribute to be used for member; default is 'uniqueMember'

---

**Note** User may use /?, -?, /h or -h to generate help.

---

Example command lines:

- **Sun One directory (iPlanet) server:**

```
ldap_exp -s SunSrvr1 -d "cn=Directory Manager" -w
":/, .++=" -t sun -b "dc=iPlanet, dc=com"
```

- **Microsoft Active Directory (AD) server:**

```
ldap_exp -s Win2KSrvr1 -d
"CN=Administrator,CN=Users,DC=win2ksrvr1,DC=com" -w
":/, .++=" -t msft -b "dc=win2ksrvr1,dc=com"
```

- **Novell eDirectory (NDS) server:**

```
ldap_exp.exe -s NovSrvr1 -d "cn=Admin, o=server" -w
":/, .++=" -t nov -b "o=wa"
```

- **IBM Directory server:**

```
ldap_exp -s IBMSrvr1 -d "Cn=Administrator" -w ":/, .++="
-t ibm
-b "dc=ibmsrvr1, dc=com"
```

4. Use the LDAP\_IMPORT.exe for IS libraries to import the user entries from XML file into the specified IBM FileNet IS library.

Parameters:

<i>/?</i>	Help screen
<code>/h&lt;host&gt;[:organization]</code>	IS host or domain name, organization.
<code>/u&lt;id&gt;</code> (used with <code>/p</code> )	Authorized IS user name
<code>/p"&lt;pwd&gt;"</code> (used with <code>/u</code> )	Encrypted IS user password.
<code>/i&lt;file&gt;</code>	XML input file

For example, to import user entries from XML file:

```
C:\>ldap_import /hIMGSERV:FileNet /ildap_exp.xml
```

---

**Note** Options are not case sensitive. All the information or error messages are logged to the system log or the file 'ldap\_importyyyymmddlog.txt'. If Username and password are not specified in the command, it prompts for username and password.

---

5. The IBM FileNet users created will have a password generated from the corresponding user IDs.

## Changing ISRA Specific Parameters for LDAP

The configurable properties to be set (modified) in **ra.xml** are:

- `LdapImplClassName`
- `LdapImplClassString`
- `InherentLogin`

Refer to [LdapImplClassName](#), [LdapImplClassString](#), and [InherentLogin](#), in section [Configurable ra.xml Properties](#) for details on the configuration of the respective entities.

## Undeployment

This section describes the undeployment procedure to remove ISRA and the Sample Application from the JBoss Server.

### Undeploying ISRA in a Standalone Environment

To undeploy ISRA, delete the **ISRA.rar** file and **isra.ds.xml** file from the directory `<jboss installation directory>\server\default\deploy`.

### Undeploying ISRA in a Clustered Environment

To undeploy ISRA, delete the **ISRA.rar** file and **isra.ds.xml** file from the directory `<jboss installation directory>\server\< server instance directory>\deploy` directory of every server instance, which is a part of the cluster.

Alternatively, delete **ISRA.rar** file and **isra.ds.xml** file from farm directory (for example: "JBOSS-HOME\server\node1\farm") of any server after starting each server instance. This is known as Hot Undeployment.

---

**Note** ISRA Hot Undeployment is applicable only when ISRA is deployed through Hot Deployment mode.

---

### Undeploying ISRA Console and Sample Application in a Standalone Environment

To undeploy ISRA Console and Sample Application, delete the ISRAConsole.ear file from the directory `<jboss installation directory>\server\default\deploy`.

Similarly, FNImageViewer can also be undeployed.

---

**Note** The user must undeploy the previous version of IBM FileNet Image Viewer before deploying the latest version.

---

### Undeploying ISRA Console and Sample Application in a Clustered Environment

To undeploy ISRA Console and Sample Application, delete the ISRAConsole.ear file from the directory `<jboss installation directory>\server\<server instance directory>\deploy` directory of every server instance, which is a part of the cluster.

Alternatively, delete **ISRAConsole.ear** file from farm directory (for example: "JBOSS-HOME\server\node1\farm") of any server after starting each server instance. This is known as Hot Undeployment.

---

**Note** This is applicable only when ISRAConsole.ear is deployed through Hot Deployment mode.

---

Similar steps can be used to undeploy FNImageViewer in a clustered environment.

---

**Note** The user must undeploy the previous version of IBM FileNet Image Viewer before deploying the latest version.

---

## Troubleshooting

This section describes how to troubleshoot ISRA.

### Disabling NCH Broadcasts

ISRA users (application client) need to access IS libraries across routers on networks where broadcasts are disabled. This is done by creating alias entries for the IS libraries in the hosts file, where ISRA is deployed. ISRA must locate the IP address of the NCH server to find other IS services for an IS setup.

ISRA attempts to find the NCH server by generating broadcast packets, even if the NCH server was not reachable using broadcasts. User can disable NCH server location broadcasts to reduce broadcast traffic on the network.

User may want to disable NCH broadcasts if:

- Routers are present between servers,
- Want no broadcast activity on the networks,
- Want to force a multi-homed server to use a specific IP address configured by the operating system network directory search facility.

To specify the alias in the hosts file:

1. Locate **hosts file** on the server. It is located in the `/etc` folder on UNIX systems. On a Microsoft Windows Server, it is located in the `\system32\drivers\etc` under the Windows installation directory.
2. Open the hosts file with a preferred text editor. If a host file does not exist, create a new file using the preferred text editor.
3. For each IBM FileNet library that user needs to connect through ISRA, entries should be made in the hosts file as `<IP address of domain:organization> <domain-organization>-nch-server`, where:
  - `<IP address of domain:organization>` is IP address of an IBM FileNet domain and organization identifying the target IBM FileNet library system (NCH Server).
  - `<domain-organization>` is domain and organization name. The rules to follow while specifying the domain-organization name are:
    - Delete all characters except ASCII alphanumeric characters and hyphens.
    - Convert all upper case characters to lower case.
    - Insert a hyphen between the domain and organization names.
    - Append `nch-server` as a literal.

For example, if an IBM FileNet library has a domain, `fn_is`, and organization, `IBM`, and its IP address is `123.45.6.78`, the hosts file entry will be `123.45.6.78 fnis-IBM-nch-server`



# Appendix A: ra.xml

## ra.xml

```
<?xml version="1.0" encoding="UTF-8"?>

<!DOCTYPE connector PUBLIC "-//Sun Microsystems, Inc.//DTD Connector
1.0//EN" 'http://java.sun.com/dtd/connector_1_0.dtd'>

<connector>
  <display-name>ISRA</display-name>
  <vendor-name>IBM</vendor-name>
  <spec-version>1.0</spec-version>
  <eis-type>IBM FileNet Image Services</eis-type>
  <version>3.4.0</version>
  <license>
    <license-required>>false</license-required>
  </license>
  <resourceadapter>
    <managedconnectionfactory-
class>com.filenet.is.ra.spi.FN_IS_SpiManagedConnectionFactory</managedc
onnectionfactory-class>
    <connectionfactory-
interface>javax.resource.cci.ConnectionFactory</connectionfactory-
interface>
    <connectionfactory-impl-
class>com.filenet.is.ra.cci.FN_IS_CciConnectionFactory</connectionfacto
ry-impl-class>
    <connection-interface>javax.resource.cci.Connection</connection-
interface>
    <connection-impl-
class>com.filenet.is.ra.cci.FN_IS_CciConnection</connection-impl-class>
    <transaction-support>NoTransaction</transaction-support>
    <config-property>
      <description>Domain name of the Image Services
Server</description>
      <config-property-name>DomainName</config-property-name>
      <config-property-type>java.lang.String</config-property-type>
      <config-property-value>FileNetIS</config-property-value>
    </config-property>
    <config-property>
      <description>Organization name of the Image Services
Server</description>
      <config-property-name>OrganizationName</config-property-name>
      <config-property-type>java.lang.String</config-property-type>
      <config-property-value>IBM</config-property-value>
    </config-property>
    <config-property>
      <description>0-Exceptions and Warnings; 1-Info; 2-Debug
Level</description>
      <config-property-name>LoggingLevel</config-property-name>
      <config-property-type>java.lang.Integer</config-property-type>
      <config-property-value>0</config-property-value>
    </config-property>
  </resourceadapter>
</connector>
```

```

</config-property>
<config-property>
  <description>0-No Logging; 1-Console Logging; 2-File Logging; 3-
Both(File and console)</description>
  <config-property-name>LoggingMode</config-property-name>
  <config-property-type>java.lang.Integer</config-property-type>
  <config-property-value>3</config-property-value>
</config-property>
<config-property>
  <description>Page data fetch size (in kilo bytes)</description>
  <config-property-name>PageBufferSize</config-property-name>
  <config-property-type>java.lang.Integer</config-property-type>
  <config-property-value>64</config-property-value>
</config-property>
<config-property>
  <description>Cache refresh interval(in minutes)</description>
  <config-property-name>CacheRefreshInterval</config-property-name>
  <config-property-type>java.lang.Integer</config-property-type>
  <config-property-value>30</config-property-value>
</config-property>

<config-property>
  <description>Security cache mode(1-caches users and groups 2-
caches groups only)</description>
  <config-property-name>SecurityCacheMode</config-property-name>
  <config-property-type>java.lang.Integer</config-property-type>
  <config-property-value>1</config-property-value>
</config-property>

<config-property>
  <description>Selective metadata refresh(1-printer cache 2-doc
class cache 4-key fields cache 8-menu values cache )</description>
  <config-property-name>MetaDataCacheRefreshMode</config-property-
name>
  <config-property-type>java.lang.Integer</config-property-type>
  <config-property-value>15</config-property-value>
</config-property>

<config-property>
  <description>Name of the Product</description>
  <config-property-name>ProductName</config-property-name>
  <config-property-type>java.lang.String</config-property-type>
  <config-property-value>IBM FileNet Image Services Resource
Adapter</config-property-value>
</config-property>
<config-property>
  <description>Product Version</description>
  <config-property-name>ProductVersion</config-property-name>
  <config-property-type>java.lang.String</config-property-type>
  <config-property-value>ISRA 3.4.0 Enterprise</config-property-
value>
</config-property>
<config-property>
  <description>ISRA Logfile name (can include path) </description>
  <config-property-name>LogFileName</config-property-name>
  <config-property-type>java.lang.String</config-property-type>

```

```

    <config-property-value>ISRA.log</config-property-value>
  </config-property>
  <config-property>
    <description>Maximum Size of ISRA LogFile (in mega
bytes)</description>
    <config-property-name>LogFileSize</config-property-name>
    <config-property-type>java.lang.Integer</config-property-type>
    <config-property-value>5</config-property-value>
  </config-property>
  <config-property>
    <description>LDAP Authentication Class
Name</description>
    <config-property-name>LdapImplClassName</config-property-
name>
    <config-property-type>java.lang.String</config-property-
type>
    <config-property-
value>com.filenet.is.ra.fnis.FN_IS_IPlanetImpl</config-property-value>
  </config-property>
  <config-property>
    <description>Server details for LDAP Authentication
</description>
    <config-property-name>LdapImplClassString</config-property-
name>
    <config-property-type>java.lang.String</config-property-
type>
    <config-property-
value>filenetserver;389;ou=Users,ou=FileNet,dc=FileNetRoot</config-
property-value>
  </config-property>
  <config-property>
    <description>Inherently login through LDAP
authentication or not 0-Direct IS Login;1-LDAP
Authentication</description>
    <config-property-name>InherentLogin</config-property-name>
    <config-property-type>java.lang.Integer</config-property-type>
    <config-property-value>0</config-property-value>
  </config-property>
  <config-property>
    <description>ISRA instance that is currently being deployed on a
single machine; Min Value = 1, Max Value = 10</description>
    <config-property-name>DeploymentInstance</config-property-name>
    <config-property-type>java.lang.Integer</config-property-type>
    <config-property-value>1</config-property-value>
  </config-property>
  <config-property>
    <description>Parameter to enable PCH Logging in ISRA
</description>
    <config-property-name>PCHLogging</config-property-name>
    <config-property-type>java.lang.String</config-property-type>
    <config-property-value>Disabled</config-property-value>
  </config-property>
  <config-property>
    <description>LDAP Anonymous user login flag</description>
    <config-property-name>AllowAnonymousUser</config-property-
name>
    <config-property-type>java.lang.Boolean</config-property-type>

```

```

        <config-property-value>>true</config-property-value>
</config-property>
<config-property>
    <description>0-No Logging; 1-File Logging</description>
    <config-property-name>RPCLogging</config-property-name>
    <config-property-type>java.lang.Integer</config-property-type>
    <config-property-value>0</config-property-value>
</config-property>
<config-property>
    <description>Codepage for ISRA</description>
    <config-property-name>ClientCodepage</config-property-name>
    <config-property-type>java.lang.String</config-property-type>
    <config-property-value>cp1250</config-property-value>
</config-property>
<config-property>
    <description>Locale of the Image Services Server (two letter ISO
language code, for example en, de, ar, ja)</description>
    <config-property-name>ISLocale</config-property-name>
    <config-property-type>java.lang.String</config-property-type>
    <config-property-value>en</config-property-value>
</config-property>
<config-property>
    <description>It is a configurable parameter to Ignore [77,0,11 The
object is busy] error, incase of DocMigration</description>
    <config-property-name>IgnoreObjectBusyMsgInDocMigration</config-
property-name>
    <config-property-type>java.lang.Boolean</config-property-type>
    <config-property-value>>false</config-property-value>
</config-property>
    <authentication-mechanism>
        <authentication-mechanism-type>BasicPassword</authentication-
mechanism-type>
        <credential-
interface>javax.resource.security.PasswordCredential</credential-
interface>
    </authentication-mechanism>
    <reauthentication-support>>false</reauthentication-support>
</resourceadapter>
</connector>

```

## Notices

This information was developed for products and services offered in the U.S.A.

IBM may not offer the products, services, or features discussed in this document in other countries. Consult your local IBM representative for information on the products and services currently available in your area. Any reference to an IBM product, program, or service is not intended to state or imply that only that IBM product, program, or service may be used. Any functionally equivalent product, program, or service that does not infringe any IBM intellectual property right may be used instead. However, it is the user's responsibility to evaluate and verify the operation of any non-IBM product, program, or service.

IBM may have patents or pending patent applications covering subject matter described in this document. The furnishing of this document does not grant you any license to these patents. You can send license inquiries, in writing, to:

IBM Director of Licensing

IBM Corporation

North Castle Drive

Armonk, NY 10504-1785

U.S.A.

For license inquiries regarding double-byte (DBCS) information, contact the IBM Intellectual Property Department in your country or send inquiries, in writing, to:

IBM World Trade Asia Corporation

Licensing

2-31 Roppongi 3-chome, Minato-ku

Tokyo 106-0032, Japan

**The following paragraph does not apply to the United Kingdom or any other country where such provisions are inconsistent with local law:** INTERNATIONAL BUSINESS MACHINES CORPORATION PROVIDES THIS PUBLICATION "AS IS" WITHOUT WARRANTY OF ANY KIND, EITHER EXPRESS OR IMPLIED, INCLUDING, BUT NOT LIMITED TO, THE IMPLIED WARRANTIES OF NON-INFRINGEMENT, MERCHANTABILITY OR FITNESS FOR A PARTICULAR PURPOSE. Some states do not allow disclaimer of express or implied warranties in certain transactions, therefore, this statement may not apply to you.

This information could include technical inaccuracies or typographical errors. Changes are periodically made to the information herein; these changes will be incorporated in new editions of the publication. IBM may make improvements and/or changes in the product(s) and/or the program(s) described in this publication at any time without notice.

Any references in this information to non-IBM Web sites are provided for convenience only and do not in any manner serve as an endorsement of those Web sites. The materials at those Web sites are not part of the materials for this IBM product and use of those Web sites is at your own risk.

IBM may use or distribute any of the information you supply in any way it believes appropriate without incurring any obligation to you.

Licensees of this program who wish to have information about it for the purpose of enabling: (i) the exchange of information between independently created programs and other programs (including this one) and (ii) the mutual use of the information which has been exchanged, should contact:

IBM Corporation

J46A/G4

555 Bailey Avenue

San Jose, CA 95141-1003

U.S.A.

Such information may be available, subject to appropriate terms and conditions, including in some cases, payment of a fee.

The licensed program described in this document and all licensed material available for it are provided by IBM under terms of the IBM Customer Agreement, IBM International Program License Agreement or any equivalent agreement between us.

Any performance data contained herein was determined in a controlled environment. Therefore, the results obtained in other operating environments may vary significantly. Some measurements may have been made on development-level systems and there is no guarantee that these measurements will be the same on generally available systems. Furthermore, some measurements may have been estimated through extrapolation. Actual results may vary. Users of this document should verify the applicable data for their specific environment.

Information concerning non-IBM products was obtained from the suppliers of those products, their published announcements or other publicly available sources. IBM has not tested those products and cannot confirm the accuracy of performance, compatibility or any other claims related to non-IBM products. Questions on the capabilities of non-IBM products should be addressed to the suppliers of those products.

All statements regarding IBM's future direction or intent are subject to change or withdrawal without notice, and represent goals and objectives only.

This information contains examples of data and reports used in daily business operations. To illustrate them as completely as possible, the examples include the names of individuals, companies, brands, and products. All of these names are fictitious and any similarity to the names and addresses used by an actual business enterprise is entirely coincidental.

## **COPYRIGHT LICENSE:**

This information contains sample application programs in source language, which illustrate programming techniques on various operating platforms. You may copy, modify, and distribute these sample programs in any form without payment to IBM, for the purposes of developing, using, marketing or distributing application programs conforming to the application programming interface for the operating platform for which the sample programs are written. These examples have not been thoroughly tested under all conditions. IBM, therefore, cannot guarantee or imply reliability, serviceability, or function of these programs.

## **Trademarks**

- IBM is a registered trademark of International Business Machines Corporation in the United States, other countries, or both.

- Adobe, the Adobe logo, PostScript, and the PostScript logo are either registered trademarks or trademarks of Adobe Systems Incorporated in the United States, and/or other countries.
- Cell Broadband Engine is a trademark of Sony Computer Entertainment, Inc. in the United States, other countries, or both and is used under license there from.
- Java and all Java-based trademarks are trademarks of Sun Microsystems, Inc. in the United States, other countries, or both.
- Microsoft, Windows, Windows NT, and the Windows logo are trademarks of Microsoft Corporation in the United States, other countries, or both.
- Intel, Intel logo, Intel Inside, Intel Inside logo, Intel Centrino, Intel Centrino logo, Celeron, Intel Xeon, Intel SpeedStep, Itanium, and Pentium are trademarks or registered trademarks of Intel Corporation or its subsidiaries in the United States and other countries.
- UNIX is a registered trademark of The Open Group in the United States and other countries.
- Linux is a registered trademark of Linus Torvalds in the United States, other countries, or both.
- ITIL is a registered trademark, and a registered community trademark of the Office of Government Commerce, and is registered in the U.S. Patent and Trademark Office.
- IT Infrastructure Library is a registered trademark of the Central Computer and Telecommunications Agency, which is now part of the Office of Government Commerce.
- Other company, product, or service names may be trademarks or service marks of others.

# Index

- About This Manual, 6
- AllowAnonymousUser, 12, 16
- CacheRefreshInterval, 12, 13
- Changing ISRA Specific Parameters, 11
- Changing ISRA Specific Parameters for LDAP, 29
- ClientCodepage, 12, 16
- Configuring and Deploying ISRA ISRA Console and Sample Application, 19
- Configuring Deployed ISRA, 11
- Configuring JBoss Specific Entities, 18
- Configuring Multiple IS Servers with ISRA, 18
- Configuring Sample Application, 19
- Conventions Used in the Document, 6
- Deploying IBM FileNet Image Viewer in Clustered Environment, 23
- Deploying IBM FileNet Image Viewer in Standalone Environment, 23
- Deploying ISRA Console and Sample Application in Clustered Environment, 21
- Deploying ISRA Console and Sample Application in Standalone Environment, 21
- Deploying ISRA in a Clustered Environment, 8
- Deploying ISRA in a Standalone Environment, 7
- Deploying ISRA.rar, 7, 8
- Deployment Requirements, 7
- DeploymentInstance, 10, 12, 15
- Disabling NCH Broadcasts, 32
- DomainName, 12
- Explanation for Terminal name and ISRALock folder, 10
- GMTEnabled flag, 17
- Hardware Requirements, 7
- IBM FileNet Image Viewer Quick Start Feature, 24
- InherentLogin, 12
- ISLocale, 12, 18
- ISRA Configuration, 11
- ISRA Console, 19
- ISRA Deployment, 7
- ISRA RA Descriptor, 8, 9
- LDAP Configuration, 27
- LdapImplClassName, 12, 14
- LdapImplClassString, 12, 15
- LogFileName, 12, 14
- LogFileSize, 12, 14
- LoggingLevel, 12
- LoggingMode, 12, 13
- Mandatory Requirements for ISRA, 10
- Mapping Existing LDAP Server Users to IS, 27
- OrganizationName, 12
- PageBufferSize, 12, 13
- PCHLogging, 12, 16
- Related References, 6
- RPCLogging, 12, 16
- Software Requirements, 7
- Testing Sample Application, 25
- Troubleshooting, 32
- Undeploying ISRA Console and Sample Application in a Clustered Environment, 30
- Undeploying ISRA Console and Sample Application in a Standalone Environment, 30
- Undeploying ISRA in a Clustered Environment, 30
- Undeploying ISRA in a Standalone Environment, 30
- Undeployment, 30
- Using the ISRA Console, 22