



# FileNet Document Publisher

## Creating a WML Project

Release 7.5.0

October 2005

FileNet is a registered trademark of FileNet Corporation.  
All other product and brand names are trademarks or registered trademarks of their respective companies.  
Due to continuing product development, product specifications and capabilities are subject to change without notice.

Copyright © 2001, 2005 FileNet Corporation. All rights reserved.

**FileNet Corporation**  
**3565 Harbor Boulevard**  
**Costa Mesa, California 92626**  
**800.FILENET (345.3638)**  
**Outside the U.S., call:**  
**1.714.327.3400**  
**www.filenet.com**

---

## Copyright

© 1996–2005 Stellent, Inc. All rights reserved. No part of this document may be reproduced or transmitted in any form or by any means, electronic or mechanical, including photocopying, recording, or by any information storage and retrieval system without written permission from the owner, Stellent, Inc., 7500 Flying Cloud Drive, Suite 500, Eden Prairie, Minnesota 55344 USA. The copyrighted software that accompanies this manual is licensed to the Licensee for use only in strict accordance with the Software License Agreement, which the Licensee should read carefully before commencing use of this software.

Stellent is a registered trademark, and the Stellent logo, Stellent Content Server, Stellent Content Management, Stellent Site Studio, Stellent Content Integration Suite, Stellent Content Portlet Suite, Stellent Desktop Integration Suite, Stellent Dynamic Converter, Stellent Content Publisher, Stellent Inbound Refinery, and Stellent Image Server are trademarks of Stellent, Inc. in the USA and other countries.

Adobe, Acrobat, the Acrobat Logo, Acrobat Capture, Distiller, Frame, the Frame logo, and FrameMaker are registered trademarks of Adobe Systems Incorporated.

Apache is a registered trademark of the Apache Software Foundation. Stellent Content Integration Suite includes software developed by the Apache Software Foundation (<http://www.apache.org/>).

BEA is a registered trademark, and WebLogic is a trademark of BEA Systems, Inc.

HP-UX is a registered trademark of Hewlett-Packard Company.

IBM, Informix, and WebSphere are registered trademarks of IBM Corporation.

Kofax is a registered trademark, and Ascent and Ascent Capture are trademarks of Kofax Image Products.

Linux is a registered trademark of Linus Torvalds.

Microsoft is a registered trademark, and Windows, Word, and Access are trademarks of Microsoft Corporation.

Oracle is a registered trademark of Oracle Corporation.

Plumtree is a registered trademark of Plumtree Software, Inc.

Portions Copyright © 1991-1997 LEAD Technologies, Inc. All rights reserved.

Red Hat is a registered trademark of Red Hat, Inc.

Sun is a registered trademark, and Solaris, Sun ONE, iPlanet, Java, and all Java-based trademarks are trademarks of Sun Microsystems, Inc.

Sybase is a trademark of Sybase, Inc.

UNIX is a registered trademark of The Open Group.

Verity is a registered trademark of Verity, Incorporated.

All other trade names are the property of their respective owners.

---

# Contents

<b>Creating a WML project .....</b>	<b>5</b>
Entering the WML mode .....	5
Starting a new WML project.....	6
Application and project options .....	7
Element Setup .....	8
Formatting .....	9
Navigation.....	11
Globals .....	12
Translating a simple project .....	14
Adding a reference page.....	16
The big picture .....	17



# Creating a WML project

FileNet Document Publisher Station can operate in two modes: HTML and WML. In WML mode, you can create web publications consisting of WML output that can be published to a WAP server for accessing via an Internet-enabled device.

Document Publisher Station opens in HTML mode by default, but you can switch back and forth between HTML and WML mode.

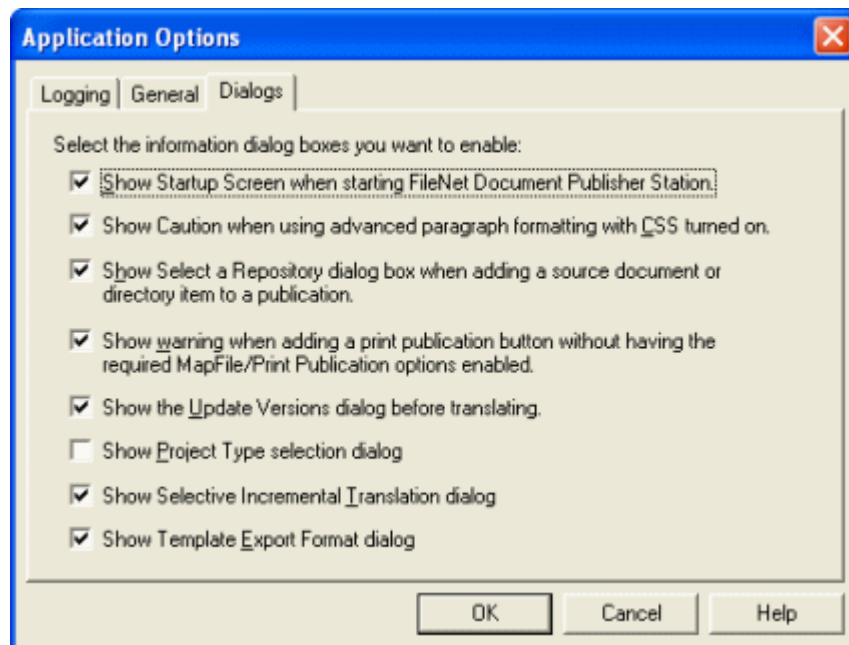
HTML projects use a copy of the default project file Default.tcp. WML projects use a copy of DefaultWML.tcp, which is designed specially for WML projects. Both project files are located in the ...Resources\en folder of your FileNet Document Publisher directory. Copies are also available in the Support folder on your product disc.

## Notes:

- WML publications created in Document Publisher Station use templates that target the Nokia micro browsers (which support WML standards 1.1 and 1.2) and the Phone.com micro browser. Other micro browsers may produce unexpected results.
- We recommend that you do not add HTML or XML source documents to a WML project, as this will not produce valid WML.
- The Help topics you view when you click the Help buttons in Document Publisher Station are designed for HTML projects and should be used only as a guide when you are creating WML projects.

## Entering the WML mode

1. To enter the WML mode, click **Application Options** on the **View** menu.
2. Click the **Dialogs** tab.




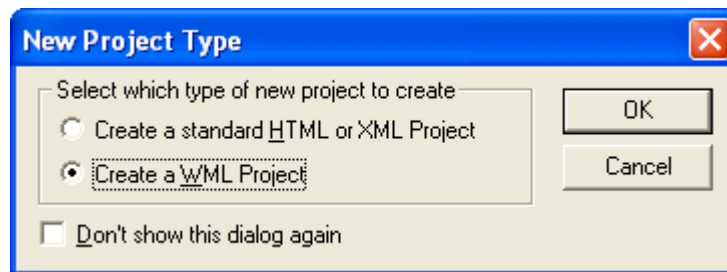
**Figure 1-1** The default settings for the Dialogs tab dialog in Application Options. Once you select **Show Project Type selection dialog**, the Project Type dialog box will open the next time you start a new project. You can then switch to the WML mode to create WML projects.

3. Select **Show Project Type selection dialog**.
4. Click **OK**.

You are now ready to start a WML project.

## Starting a new WML project

1. Click **New**  on the standard toolbar to start a new project. The New Project Type dialog box opens.



2. Select **Create a WML Project**.


You can also select **Don't show this dialog again** if you plan to stay in the WML mode. If you do, when you're ready to return to the HTML mode, you can return to the Applications Options dialog box (Figure 1-1) and select **Show Project Type selection dialog** once again. (Clicking **Don't show this dialog** clears the **Show Project Type selection dialog** check box in Application Options.)

3. Click **OK** to close the New Project Type dialog box.


You have opened a copy of DefaultWML.tcp. You will see <Unnamed-WML> in the root of the publication hierarchy and also as the default publication name in the Publication Properties dialog box, which has already opened.

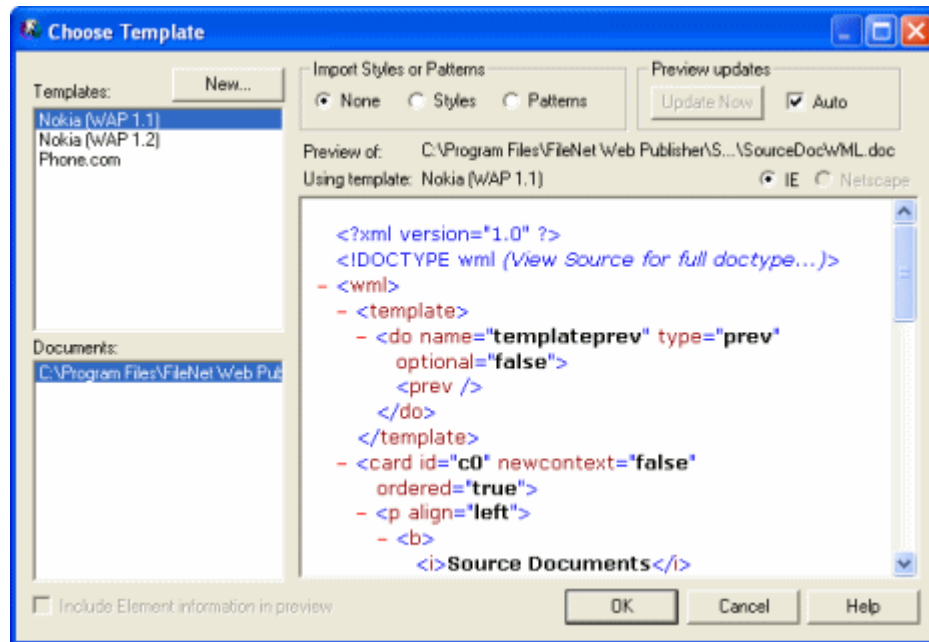
4. You can rename the publication. Select <Unnamed-WML> and type **WMLProject**. Then click **OK**.

You are now in the WML mode, ready to start your WML project. The differences between the HTML and WML modes may not be immediately apparent.

On the main window, one difference is that the Layout button  on the toolbar is disabled. (You cannot create a frameset, table or custom table layout for a WML publication.) Note, also, the special icon next to the root publication in the Publication Hierarchy pane. As soon as you open any project in Document Publisher Station, you can check the publication icon to identify the project type.

Once you add a document to the project, you will quickly see other differences.

1. Click **Add Document**  on the toolbar and select **SourceDocWML.doc** from the `..\Samples\en\Formatted` folder. The Choose Template dialog box opens.



**Figure 1-2** There are only three default templates available for the cards (pages) of a WML project. These templates relate to the specific micro browser that will be used to view the WML output.

First, you can see that there are only three default templates available for cards (pages) in a WML project. You can select each of the templates, in turn, but you will not see many differences in the Preview window. (Obviously, you can still create new templates, basing them on the default ones.)

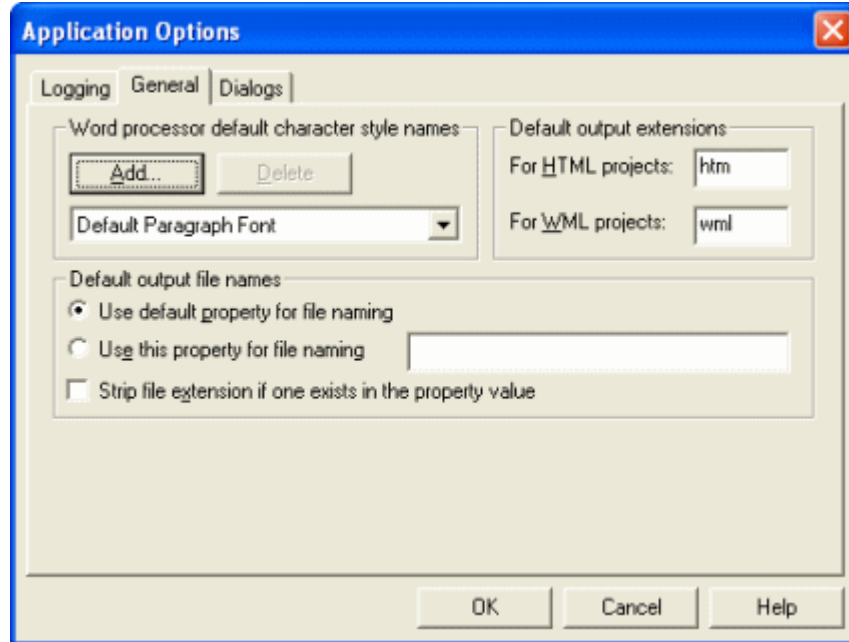
Each template supports a different micro browser. The essential difference between Nokia 1.1 and Nokia 1.2, for example, is that the latter (which supports WML standard 1.2) permits use of the `<pre>` tag for pre-formatted text. (There was also attribute changes between 1.1 and 1.2.) Your choice of template will depend on the device you want to support.

2. Select **Nokia (WAP 1.1)**.
3. Click **OK** to close Choose Templates and return to the main window.

Let us explore the standard features in Document Publisher Station to see the differences between a WML and HTML project. Remember: many of the features you are used to in HTML are simply not available in WML, which is a much simpler format.

## Application and project options

Let us begin with a quick review of application and project options. The Application Options dialog box (open from the View menu) is essentially the same whether you are in an HTML project or a WML one. However, in addition to the new option in the Dialogs tab dialog for toggling between the two modes (see Figure 1-1), the Default Output Extensions panel in the General tab dialog now includes the **wml** extension, which is used by default for all documents added to a WML project (see Figure 1-3).

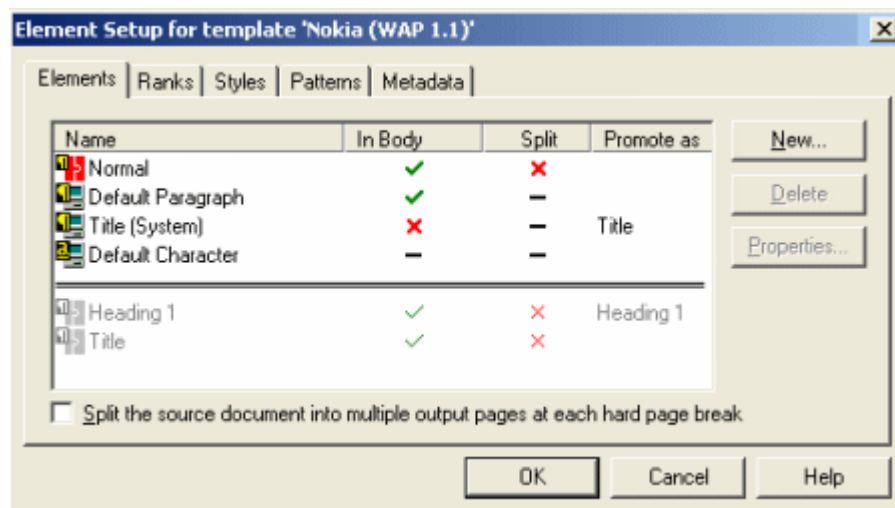


**Figure 1-3** The *wml* extension is used by default for all WML projects. Like the *htm* extension for HTML projects, you can change this, if you want.

The Project Options dialog box (also from the View menu) displays a greater number of differences when in the WML mode. Gone are the following panels and their options: HTML Generation, Containing Frame Name (there are no frames in WML publications), and Print Publishing (you do not print from an Internet-enabled device).

## Element Setup

The Element Setup property sheet is usually your first stop when creating any new project. It is usually best to check elements, styles, patterns, and metadata, and to create new elements and map your content, as appropriate, before you begin to format output, set navigation links, and so on.



**Figure 1-4** There are fewer default elements in a WML project.



There are fewer default elements in a WML project and no default ranks, styles, patterns, or metadata. But you can still use ranks, styles, patterns, and metadata in your WML project, just as you would in an HTML one. (No styles or patterns are shown here because the source document SourceDocWML.doc is a manually formatted document—all the content is assigned to the Normal style—and the document was imported with the default None selected in the Choose Template dialog box. As a result, all of the content was mapped to the Default Paragraph element.)

With one other exception, the options available in an HTML project are available for WML, too. That exception is the absence of a Page TOC, which you cannot create or promote elements to. (To check this, select an element and click Properties. On the General tab dialog you will see that the Include in Page TOC check box is disabled.)

## Formatting

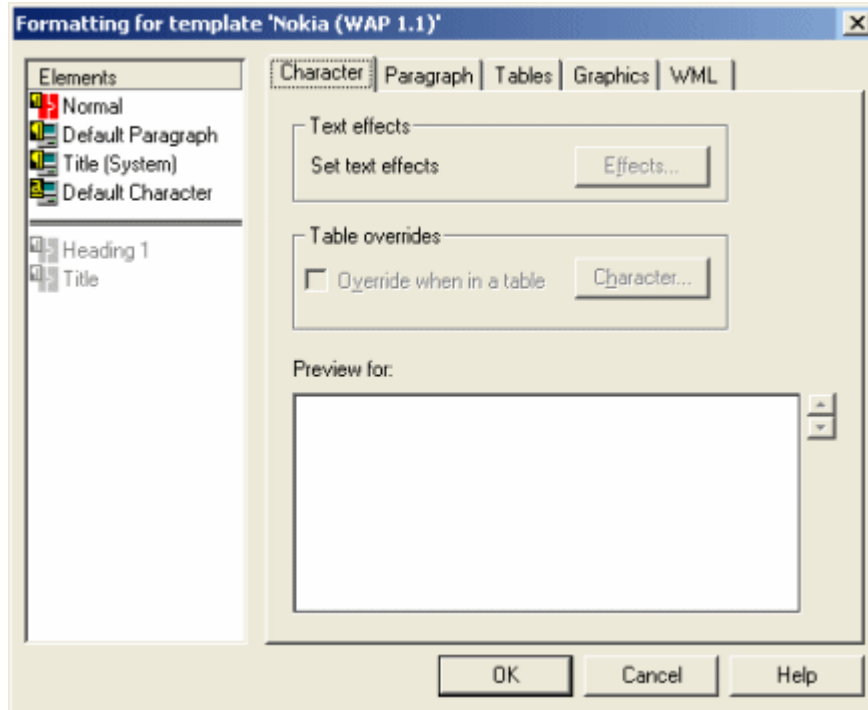
The Formatting property sheet is significantly different for a WML project. Many of the HTML features and settings are simply not relevant in WML. Figure 1-5 shows the reduced number of tab dialogs available. Moreover, there are fewer settings and options available in these tab dialogs.

Let us walk through each tab dialog, in turn.

**Character** — For WML output, there are no font or font size options, and CSS (cascading style sheets) is not an option. (WML output is obviously very plain, and the font and font size are governed by your micro browser.) You can still have bold and italic text, for example, but there are fewer text effects available. As you can see (Figure 1-5), Table Overrides is still an option, but your micro browser may not support tables.

**Paragraph** — Here, your only choice is alignment.

**Tables** — You have similar functionality as for HTML projects, but your micro browser may not support tables.



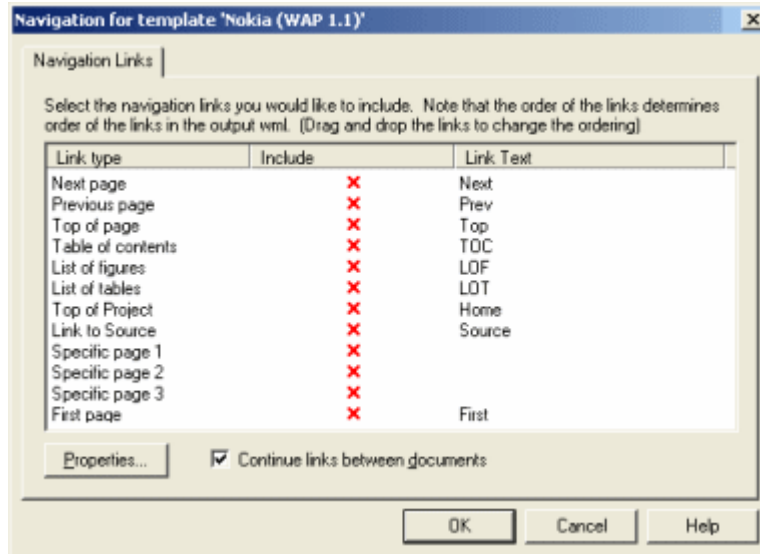
**Figure 1-5** Formatting has fewer tab dialogs available for WML projects, and fewer options in the tab dialogs that are available.

**Graphics** — Note the option to convert to WBMP for an Internet-enabled device. This is the default conversion format when you create a WML project. Three graphics formats—WBMP, BMP, and GIF—can, in fact, be used for WML publications. However, not all WAP-enabled devices support WBMP, and the micro browsers that are targeted by the three default templates do not support a common graphics format. Of course, you must work with much smaller-sized graphics files in a WML project (just as your source documents need to be smaller, too).

**WML** — Here, you can insert WML or scripting code before or after the content associated with the selected element (just as you might insert HTML code in the case of an HTML project).

## Navigation

There are significant differences between setting up navigation for a WML project versus an HTML project. Figure 1-6 shows the complete set of options available for your WML project.



**Figure 1-6** Navigation links for a card (page).

The order of selected links is very important. (The same links are available when you open this dialog box for a reference page.)

## Keys to navigation

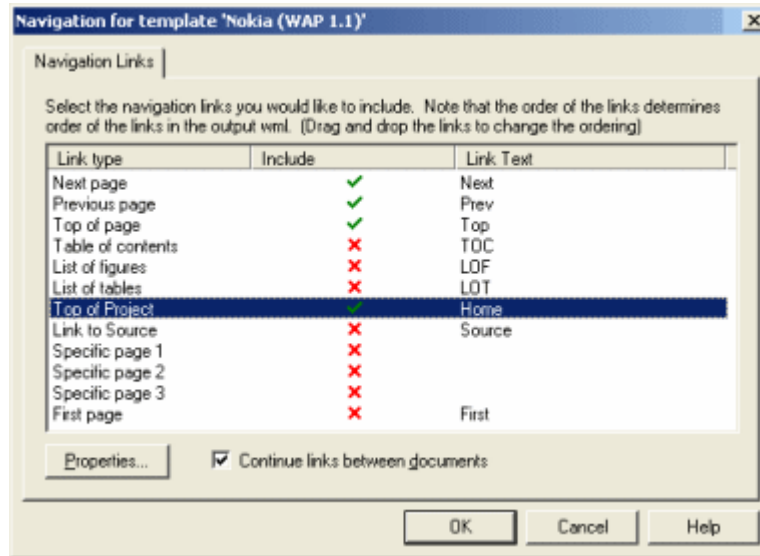
To permit navigation through your WML publication, you can assign some of the links shown in Figure 1-6 (you are unlikely to want to assign all of them). The links you select will be assigned to the two unmarked buttons on your device (which we will refer to as the “left blank button” and “right blank button”). How these buttons are used, by default, varies between devices. (For the Phone.com micro browser, for example, the left blank button is used for the Accept or OK command.) By selecting navigation links here, you can override the default settings.

Some pointers:

- The first navigation link you select in Navigation (Figure 1-6) will be assigned to the left blank button. All others you select will be assigned to the right blank button.
- If you select three or more navigation links in total, the two or more links that are assigned to the right blank button will appear in a menu in the browser window when you click that button.
- However, if your TOC, say, has only one card (page), the Next Page link would be redundant. In that event, if you assign the Next Page link, it would drop out completely and the next navigation link you selected would take its place.
- Likewise, a Previous Page link has no meaning if there is no previous page. So if you are on the first card (page) of a document, the Previous command (link) would not be available. However, it would be available for all successive pages you scroll to.
- The order of the link types in Navigation is therefore important.

- You can use drag-and-drop to change the default order of the links shown in Figure 1-6. Simply left-click the link type you want to move, and, with the mouse button held down, move the link type up or down the list to reposition it wherever you want it to be. Figure 1-7 shows some of the links moved to create a new order.

**Note:** The assignment of navigation links, as described above, assumes that you are targeting a device that allows for the assignment of links in this fashion. On a Nokia device, for example, all links will appear together on a separate card.



**Figure 1-7** Navigation links for a WMLproject.

Note that some links have been dragged to the top of the list of links. The key thing is the order in which the selected links appear on the list. With this selection, Next Page will be assigned to the left blank button and the other three to the right blank button of the device.

**Note:** The Link Text column (Figure 1-6 and Figure 1-7). You can edit this, if you want. Select the link type you want to edit, click the Properties button, and in the Link Properties dialog box, enter the text you want to use. Obviously, a character limit will dictate how long the link text can be (which, again, varies with micro browsers).

## Globals

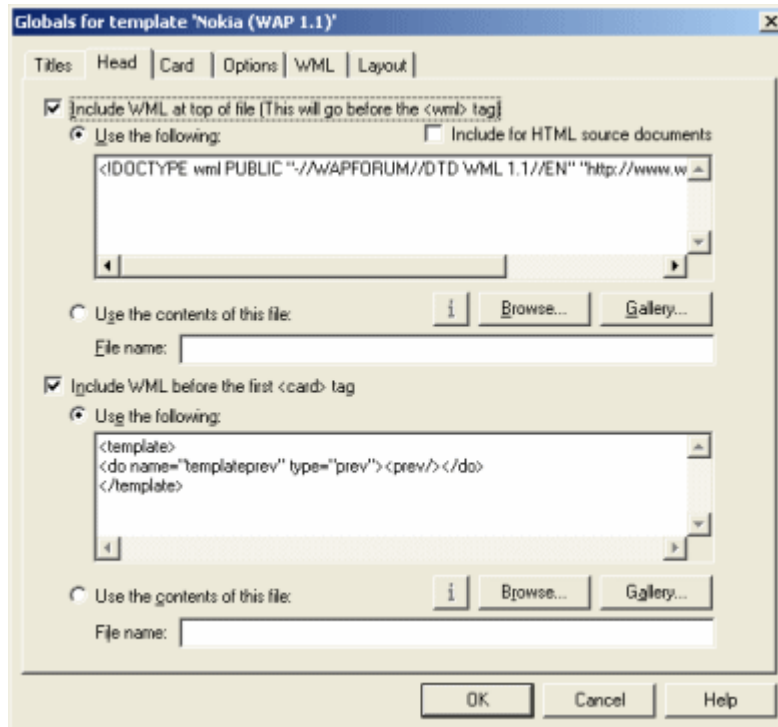
In Globals, again we are working with a reduced number of tab dialogs, and fewer options in some of the tab dialogs that are available.

**Titles** — Practically unchanged for WML projects (the page component option is not available).

**Head** — Include WML at Top of File (see Figure 1-8) displays the WML declaration for the template that you selected for your project (and therefore the micro browser you are targeting).

**Note:** Most devices and emulators will not display content if the declaration is missing. However, you can edit the declaration in the event that a new DTD is issued and you want to supply it to your users.

The Include WML Before the First <card> Tag entry contains the “prev” reference that enables the Back button on Internet-enabled devices. You generally should not change this entry.



**Figure 1-8** Globals for a WML project.

The WML declaration (in the top window) is required for your WML output to display in a micro browser. The <prev> reference in the bottom window is generally required or the Back button of your device may not work.

**Card** — This is the same as for an HTML project (where the tab dialog is named Body). Here, you can create event handles for a card in your WML output.

**Note:** In the WML standard, a deck (or file) can contain one or more cards. In Document Publisher Station, however, the default templates all treat one card as being equal to one page. So in Document Publisher Station, a deck is the same as a file is the same as a card is the same as a page.

**Options** — What is new here—and is a key ingredient in the creation of WML publications—is the Maximum WML File Size. This setting influences the eventual size of your uncompressed WML output. The default is 1397 bytes for each file (card), but you can change this number. See the next section.

**Note:** The Options tab differs slightly for reference page. (See “Adding a reference page” on page 16.)

**WML** — This is essentially the same as the HTML version.

**Layout** — There are more limited options here, because inevitably you have fewer layout elements in a WML publication.

## A word about file size

Each device has certain memory constraints. You must carefully control your WML output if it is to display successfully in an Internet-enabled device.

In fact, if an individual file is greater than 1397 bytes (compressed), it will not display. It's important to understand the following:

When Document Publisher Station translates your project, it generates uncompressed WML files.

The size of these uncompressed WML files is controlled by the following setting in the Options tab dialog of Globals:

Maximum WML file size (byt
1397

- The default WML file size is 1397 bytes. (This value is simply the lowest common denominator for devices that use a compiled deck. It may be quite conservative in some instances.)
- Document Publisher Station first splits an output file based on the element you select (the default is Heading 1). It then examines each output page to determine whether it is over the 1397 byte limit. If it is, Document Publisher Station splits the file again, to ensure that no output WML file is greater than the byte-size limit you set.
- If Document Publisher Station splits a file to meet the 1397 file size maximum, it tries to do so at a space character—but may not succeed. As a result, a file may be split in the middle of a word (and most certainly in the middle of a sentence). This suggests the need to severely “chunk” your source content to make it suitable for WML publishing.
- Once your WML output is published to a WAP server, it must then pass through a WAP gateway in order for it to reach an Internet-enabled device. The WAP gateway compresses the WML files.
- It is these compressed files that must be no larger than 1397 bytes (otherwise, the micro browser will not display them).
- Suppose the WML files that Document Publisher Station generates compress to 200 bytes. This would leave about 1197 bytes available to the device that you are targeting. (As already noted, the default 1397 byte size may be conservative.)
- In other words, conceivably you could set the file size limit in the Options tab to be much greater than 1397 bytes (say, 3000 bytes) and still be successful publishing to your target audience. The only thing to do is test, test, test. Try translating with different byte-size settings and see how successful your publishing efforts are. (This is something you obviously can't test on an emulator.)
- You may note that your translated WML output may contain certain placeholder comments that cause the file size to be exceeded. During publishing, these comments are removed, thereby meeting the file size constraint.


## Translating a simple project


Typically, you will want to test all your WML output before you publish it to a WAP server and make your content available to your users. Consider using an emulator. The one shown here was obtained from [www.openwave.com](http://www.openwave.com).

**Note:** View the behavior of your WML publication in an emulator simply as a guide. In fact, you should generally expect to encounter different behavior between an

emulator and the Internet-enabled phone it is designed to emulate. For example, some emulators do not like spaces in folder or file names (though this is unlikely to be a problem with the device itself). You need to test thoroughly.

1. With WMLProject.tcp open in Document Publisher Station, click **Translate**

 on the toolbar.

2. Click **View** . What you will see in your browser, of course, is the same WML markup you saw in the Preview window of the Choose Template dialog box when you added the source document to the project (see Figure 1-2).

However, with your emulator installed and running, you can easily view the real WML output in the micro browser. Let us say your translated output resides in C:\Document\WMLTest. The first output file will be SourceDocWML.wml (you will have several output files because of the default splitting and the restriction on WML file size).

3. In the Go field of your emulator, type:

**File://C:/Document/WMLTest/SourceDocWML.wml** (note the forward slashes).

4. Press **Enter**.


Your WML output will display in the micro browser, as shown in Figure 1-9.



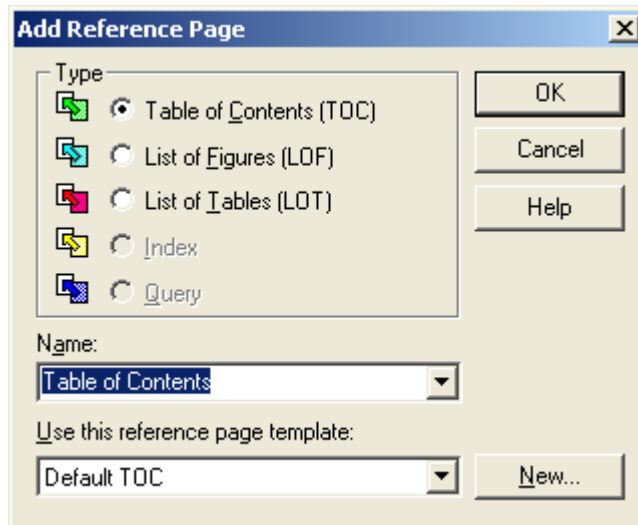
**Figure 1-9** By typing "File://" plus the path for your output WML file on your hard drive in the Go field, you can view your WML output in your micro browser.

That is one simple test. Once you add a reference page, you can explore some additional features.

## Adding a reference page

1. With WMLProject.tcp still open in Document Publisher Station, click **Add Reference Page**  on the standard toolbar to open the Add Reference Page dialog box (Figure 1-10).
2. Under Type, accept the default, Table of Contents.
 

**Note:** The Index reference page is not available for WML. Remember, too, that the TOC, LOF, and LOT templates are actually the same template. You can create a TOC with either one. (Three options are available to allow you to build different kinds of reference pages for the same project.)



**Figure 1-10** The Index template is not available for WML projects. You can use Default TOC, but you will have to add a declaration to this template for your published reference page to be viewable.

3. From the Templates drop-down list, select **Nokia TOC (WAP 1.1)**. This reference page template is designed as a companion to the Nokia (WAP 1.1) template that you associated with the source document for cards (pages).

In addition to a companion TOC template for each of the templates used for cards (pages), there is also a Default TOC template available. This might be used for targeting other micro browsers. However, it does not contain a WML declaration (you can check the Head tab dialog of Globals to confirm this), and most emulators and devices will not display any content if the declaration is missing. In order to use Default TOC, therefore, you would have to add a declaration.

4. Click **OK** to return to the main window.
5. In the Contents pane, double-click **Table of Contents.wml** (with a pause between clicks) and change the name of the output file to **TableofContents.wml**.

This is necessary here because the emulator we are using does not like spaces in folder and file names (and will not display the page, as a result). It may not be necessary with other emulators and it will not be an issue with any Internet-enabled device you target.

6. Click **Translate** .




- In the Go field of the emulator, enter:

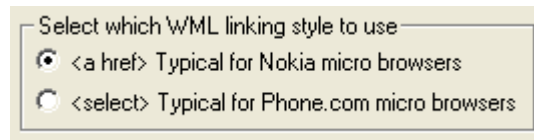
File:///C:/Document/WMLTest/TableofContents.wml

You should now see a very simple table of contents for your WML publication, with a single jump to take you to first card (page) of your main WML output, SourceDocWML.wml.

You might care to experiment now by adding navigation links to both the Table of Contents.wml and SourceDocWML.wml. Experiment with the various links available and see how they behave in the emulator that you are using.

Here is one last thing to note:

- Select **TableofContents.wml** in the Contents pane and click **Globals**  on the toolbar.
- Click **Options** to open that tab dialog. Note the panel at the bottom of the tab dialog (available only when a reference page is selected).



This setting is used to determine the linking mechanism for navigating between the TOC and your other content. It is yet one more instance where micro browsers vary. The `<a href>` option is designed for Nokia micro browsers (and is selected by default when you choose a Nokia reference page). The alternative `<select>` is suitable for Phone.com micro browsers (and becomes the default when you use the Phone.com reference page).

## The big picture

Here are some key points to bear in mind as you begin to create and test WML publications in Document Publisher Station:

- Test everything thoroughly. Emulators, devices, and micro browsers vary widely in how they interpret WML markup.
- Depending on your target audience and the number of micro browsers you are seeking to satisfy, you may need to create a project with multiple publications with the same content in each publication but a different template (for a different micro browser) associated with the content.
- The WML declaration (see the Head tab dialog of Globals) is important, because it defines the “flavor” of WML being targeted.
- The usability of TOCs varies greatly, depending on the linking mechanism that is employed (see previous section).
- The `<prev>` tag should always be defined (see the Head tab dialog of Globals). On some devices, the Back button will not work without it.
- The file size constraint (the default is 1397 bytes) applies to compressed WML output after you publish. You may be able to set the maximum size much higher.