



Print/Fax Documentation Update

**Panagon Print
Panagon Fax**

9811161-001

June 1999



©1998 FileNET Corporation. All Rights Reserved.

FileNET, @mezzanine, Mezzanine, OSAR, Revise, Saros, ValueNET, Visual WorkFlo, Watermark, WorkFlo, WorkForce Desktop, and WorkShop are registered trademarks of FileNET Corporation.

FileNET Ensemble, FileNET IMS Connect, FileNET Sentinel, FileNET:WorkGroup, Auto-Form, COLD, Document Warehouse, Foundation for Enterprise Document Management, Greenbar, Image View, Panagon, Visual WorkFlo/Composer, Visual WorkFlo/Conductor, Visual WorkFlo/Performer, WorkFlo/Fax, WorkFlo/Print, and WorkFlo/Scan are trademarks of FileNET Corporation.

All other product and brand names are trademarks or registered trademarks of their respective companies.

Due to continuing product development, product specifications and capabilities are subject to change without notice.

Copyright © 1991, 1998 FileNET Corporation. All Rights Reserved.

FileNET Corporation
3565 Harbor Boulevard
Costa Mesa, California 92626-1420
800.FILENET (345.3638)
Outside the U.S., call:
1 . 7 1 4 . 9 6 6 . 3 4 0 0
www.filenet.com

Notices

This document contains information proprietary to FileNET Corporation (FileNET). You may not disclose or use any proprietary information or reproduce any part of this document without written permission from FileNET.

Even though FileNET has tested the hardware and software and reviewed the documentation, FileNET makes no warranty or representation, either express or implied, with respect to the hardware, software, or documentation, their quality, performance, merchantability, or fitness for a particular purpose. FileNET has made every effort to keep the information in this manual current and accurate as of the date of publication or revision. However, FileNET does not guarantee or imply that this document is error free or accurate with regard to any particular specification. As a result, this product is sold as is, and you the purchaser are assuming the entire risk as to its quality and performance.

In no event will FileNET be liable for direct, indirect, special, incidental, or consequential damages resulting from any defect in the hardware, software, or documentation, even if advised of the possibility of such damages. In particular, FileNET shall have no liability for any programs or data stored in or used with FileNET products, including the costs of recovering such programs or data.

Some states do not allow the exclusion or limitations of liability for incidental or consequential damages, so the above limitation or exclusion may not apply to your installation. You may also have other rights that vary from state to state.

No FileNET agent, dealer, or employee is authorized to make any modification, extension, or addition to the above statements.

Contents

Contents of This Document 4

Packaging Changes for Print and Fax 5

Panagon Print 4.1 5

Panagon Capture 2.0.2 5

New Features and Changes 7

Panagon Print 4.1 7

Support For Optus Fax Server Software 8

Documentation Corrections 9

Panagon Print 4.1 9

Panagon Capture 2.0.2 9

Configuring a FileNET Print Queue to Preprocess Images 10

Configuring a FileNET Fax Queue for Orientation and Scaling 13

Print and Fax Documentation Update

Contents of This Document

This document describes high level issues and conditions you should know prior to installing:

- Panagon Print
- Panagon Print with Outbound Fax
- Panagon Capture with Inbound Fax

This document is **not** intended to replace the release notes. It is intended to update the installation manuals included on the Panagon CD-media.

The components of this document are as follows:

[“Packaging Changes for Print and Fax](#)

[“New Features and Changes](#)

[“Support For Optus Fax Server Software](#)

[“Documentation Corrections](#)

Packaging Changes for Print and Fax

FileNET recently changed the way Print and Fax products are packaged. These changes are effective with Panagon Print 4.1 and Panagon Capture 2.0.2.

Panagon Print 4.1

Outbound Fax functionality is now a separate option to Panagon Print 4.1. When you order the Outbound Fax option, you receive (in a separate box) a copy of Optus FACSys Fax Messaging Gateway for Windows NT and the associated documentation.

Previously, outbound fax functionality was part of the Panagon Fax product.

Panagon Print documentation is included on the Panagon Print CD. It includes:

- Print Installation Guide Release 4.0
- Print User's Guide Release 4.0
- Fax Installation Guide Release 2.0
- Fax User's Guide Release 2.0
- Print/Fax Documentation Update

Panagon Capture 2.0.2

Inbound Fax functionality is now a separate option to Panagon Capture 2.0.2. When you order the Inbound Fax option, you receive the following:

- A license key. You enter this license key in the same fashion as other keys required by Panagon Capture.
- A copy of Optus FACSys Fax Messaging Gateway for Windows NT (in a separate box) and the associated documentation.

The Panagon Capture CD media includes the following documentation for the inbound fax option:

- Fax Installation Guide Release 2.0
- Fax User's Guide Release 2.0
- Print/Fax Documentation Update

Note

Chapter 4 of the Fax Installation Guide has instructions to install FACSys 4.1. Do **NOT** use this chapter to install the FACSys software. Use the included FACSys documentation to install your FACSys software.

New Features and Changes

Panagon Print 4.1

Scaling and orientation functionality is added. A new configuration screen provides enhanced control of scaling and rotation. Specifically, large images can be automatically scaled to fit the paper size. This feature is available in Outbound Fax.

An optional TIFF to TIFF conversion capability added to clean up images with bad scan lines. This is utilized by Outbound Fax AND Panagon Print.

Enhanced printed annotations functionality: background color, border color, point size, text color, rotation, arrows stamp, text. This is utilized by Outbound Fax AND Panagon Print.

Document IDs now appear on the header of a sticky note page.

Vivid Image controllers are no longer supported.

Ricoh printers are no longer supported.

Support For Optus Fax Server Software

Inbound and Outbound Fax support the Optus SDK release 4.1. Any version of FACSys which supports Optus SDK release 4.1 will work with Panagon Print with 4.1 Outbound Fax and Panagon Capture 2.0.2 with Inbound Fax.

Please refer to the FACSys documentation and the Optus web site (www.facsys.com) for a hardware devices supported by FAXSys.

Call your FileNET service provider for assistance you may require with the Optus product. FileNET will support Optus as far as it pertains to its operation with Panagon Products.

The Optus product that is bundled with the applicable Panagon Product has 10 user licenses. If you require additional licenses, you must purchase those licenses through a certified Optus reseller.

Install FACSys according to FACSys documentation included with the FACSys product. **Disregard** the FACSys 4.1 installation and configuration instructions found in Chapter 4 of the Panagon Fax Installation Guide.

Note the Installation/Configuration Check List on page 52 of the Panagon Fax Installation Guide. The bullet entitled *Install Network Fax Server Software* gives a good overview on what you need to do to install the FACSys software. Use this as a reference for the steps you need to take when using the FACSys installation documentation.

Make sure you can send and receive faxes with FACSys **before** you install the Panagon software.

Documentation Corrections

Panagon Print 4.1

Co-residency of IDMIS and Panagon Print on the same Windows NT server is not supported at this time.

Only Windows NT Server 4.0 with Service Pack 4.0 (or later) is supported with Panagon Print 4.1. Please disregard any references to Windows NT Server 3.5.1.

Configuring a FileNET print queue to preprocess images is not found in the included documentation, but it is included in this document. See [“Configuring a FileNET Print Queue to Preprocess Images” on page 10](#) for specifics.

Panagon Capture 2.0.2

Configuring a FileNET Fax Queue for Orientation and scaling is **not** found in the included documentation but it can be found in this document. See [“Configuring a FileNET Fax Queue for Orientation and Scaling” on page 13](#) for specifics.

Configuring a FileNET Print Queue to Preprocess Images

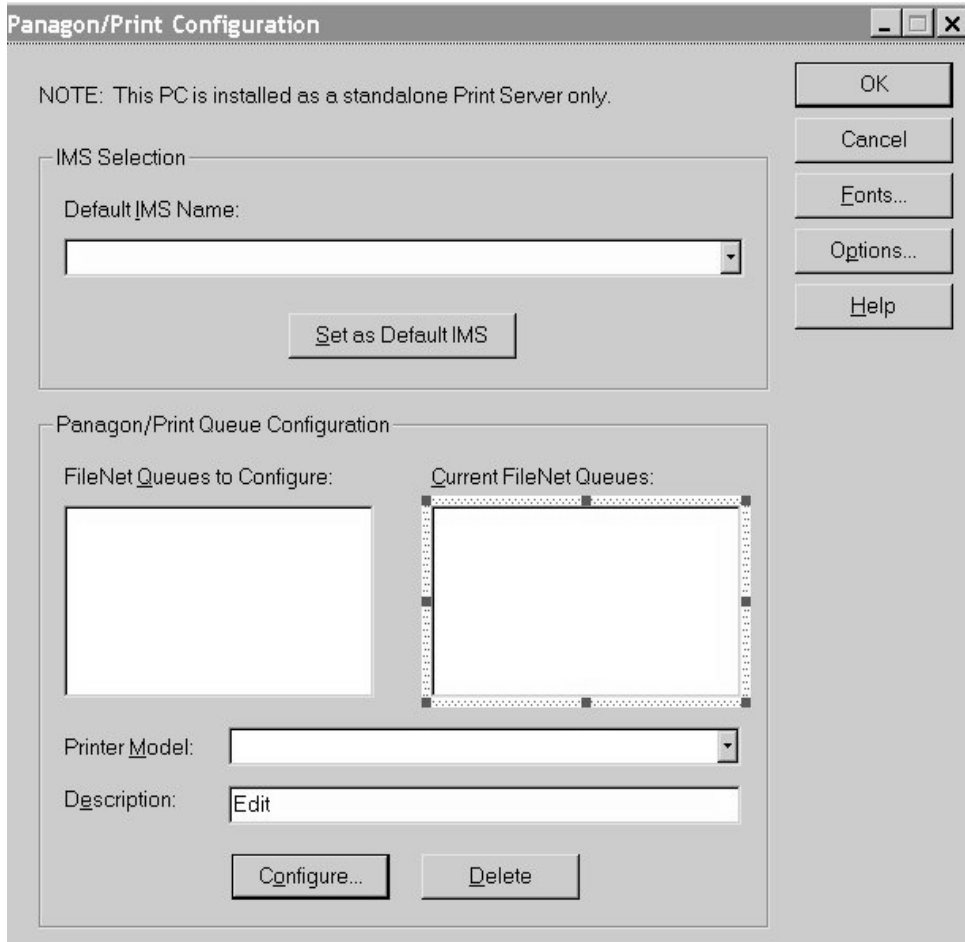
The Preprocess Images check box is an addition for pre-processing FileNet and TIFF images to correct the potential situation where some files may have bad scan lines.

This option is for Print Queue Only and set on a per queue basis.

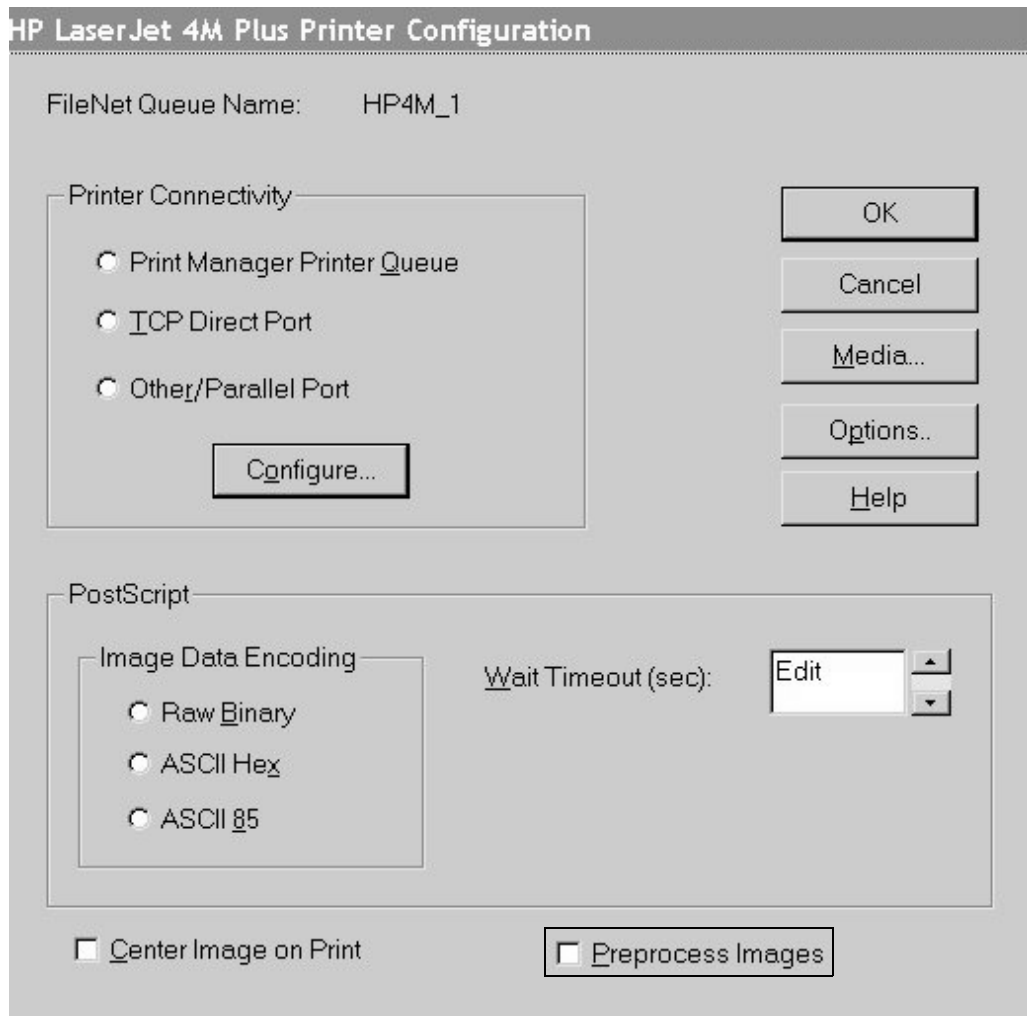
To configure a FileNET print queue to preprocess images that may contain bad scan lines, do the following:

- 1 Select the Configuration dialog from the Panagon/Print Administrator Tools menu item.





- 2 Double-click on the FileNET print queue (in the Current FileNET Queues window) you wish to configure for image preprocessing.



- 3 Click the Preprocess Images check box and select OK.

Configuring a FileNET Fax Queue for Orientation and Scaling

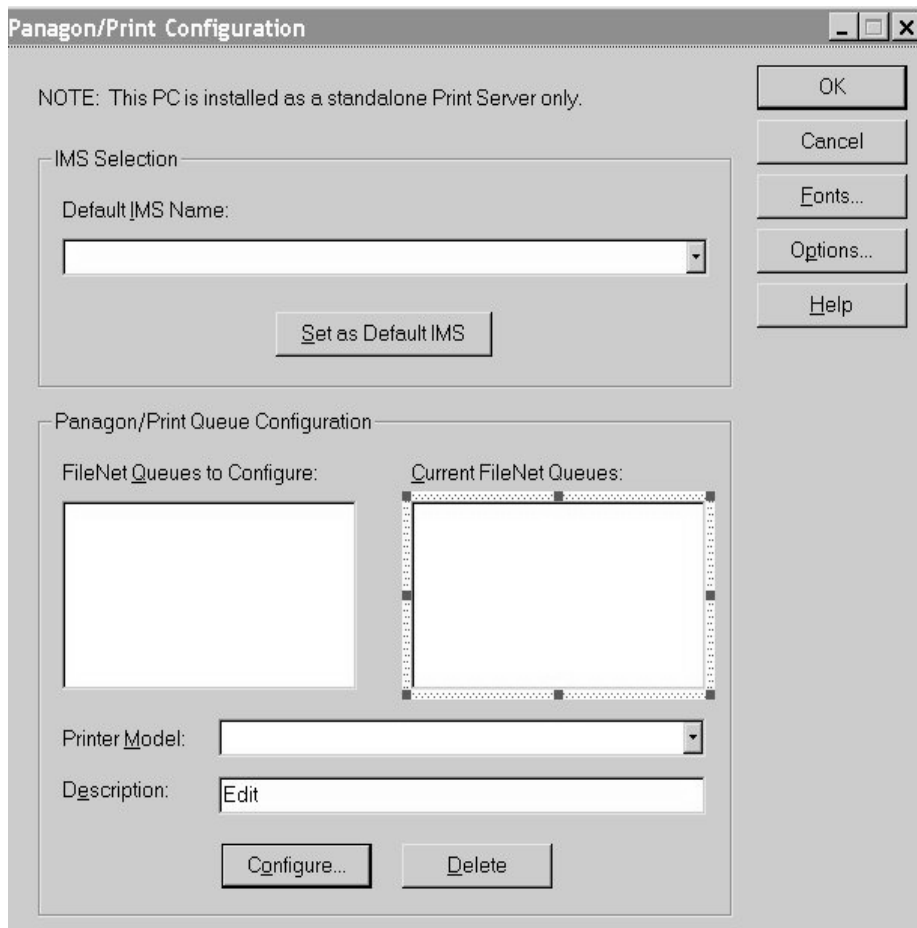
The Fax Orientation and Fax Scaling are new overrides for configuring the way faxes are sent out. In WFD and IDM Desktop these options are not available to the user, so the default orientation is set to Default and fax scaling is set to Normal. This feature was added to allow the user to specify these setting to meet his needs during faxing outbound. Orientation and Scaling options for print queues are not changed. For outbound fax queues, a new option is available for fax scaling to automatically scale an image down to fit a page. (if the image fits on the page, it is imaged at its original size.

This setup is for Fax Queues Only and settings are on a per queue basis.

To configure a FileNET fax queue for Fax Orientation and/or scaling a user must do the following:

- 1 Select the Configuration option from the Panagon/Print Administrator Tools menu item.





- 2 Double-click on the FileNET fax queue (in the Current FileNET Queues window) you wish to configure for orientation and/or scaling.

Generic Outbound Fax Configuration

FileNet Queue Name: FAX_1

Network Fax Server

Server Name:

Server Type:

Logon Name:

Password:

PostScript

Image Data Encoding

- Raw Binary
- ASCII Hex
- ASCII 85

Center Image on Print

Report True Job Status to IMS

Fax Orientation

Fax Scaling

Default
Landscape
Portrait
No Rotate

Normal
Normal
Clip Both
Exact
Approximate
Original
Center
Enhanced Exact
No Scale Unless Large

- 3** Click the check boxes for either Fax Orientation and/or Fax Scaling and select the type of orientation and/or scaling.