

IBM CommonStore for SAP, Version 8.4

Highlights

- ***Helps improve system performance by managing the growth of SAP application data***
- ***Makes business documents available to authorized users virtually anywhere on your network***
- ***Includes support for the SAP WebDAV Storage Interface 2.0 and ILM from SAP***
- ***Enables retention periods and legal holds on archived SAP transactions via ILM from SAP, helping you comply with regulatory and legal requirements***
- ***Increases end-user productivity by making documents easily accessible from an SAP GUI***
- ***Integrates with the IBM Content Manager or IBM Content Manager OnDemand repositories, providing access to SAP-related content from non-SAP applications or vice versa***



Figure 1: The latest release of IBM CommonStore for SAP software includes a number of new features that make it easy for you to manage database growth, maintain performance and make your business documents more readily available to authorized users.

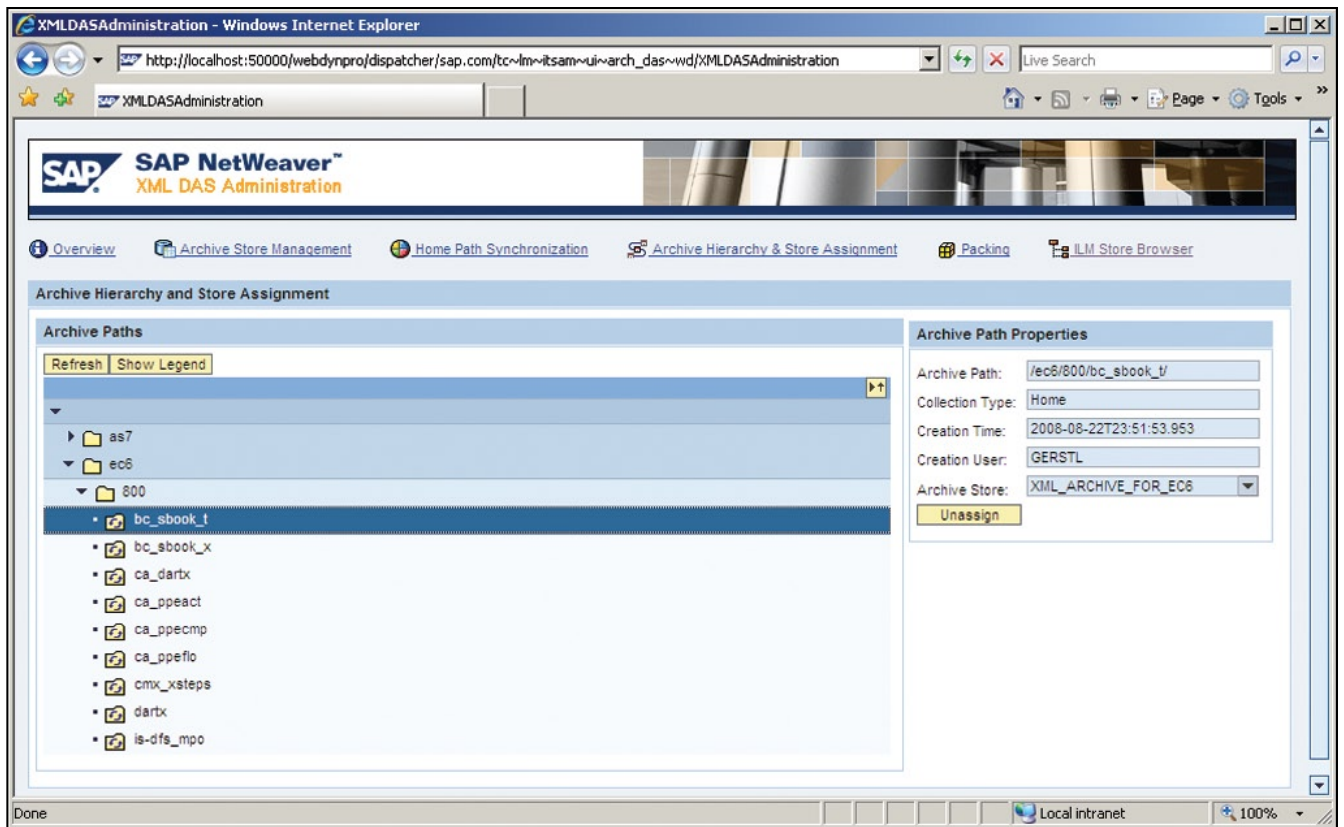


Figure 2: Using IBM CommonStore for SAP software, you can keep the size of your SAP databases under control.

Expanding your business reach while managing content growth

Helping organizations worldwide streamline operations and boost productivity, SAP software gives businesses a 360-degree view into operations. However, the amount of data generated by an SAP installation can easily grow by rates of 30 to 50 percent per year. And as your data grows, you can expect to see issues such as growing hard-disk

requirements, increased administration efforts and degradation of SAP application response times. SAP recommends archiving application data to manage database growth and maintain performance. By implementing document management capabilities, you can also make your business documents more readily available to authorized users.

Archiving plus document management capabilities for a fast-paced world

With IBM CommonStore for SAP software* you can trim the size of your SAP databases. Application information archived through CommonStore for SAP software can be stored on an external repository, allowing you to

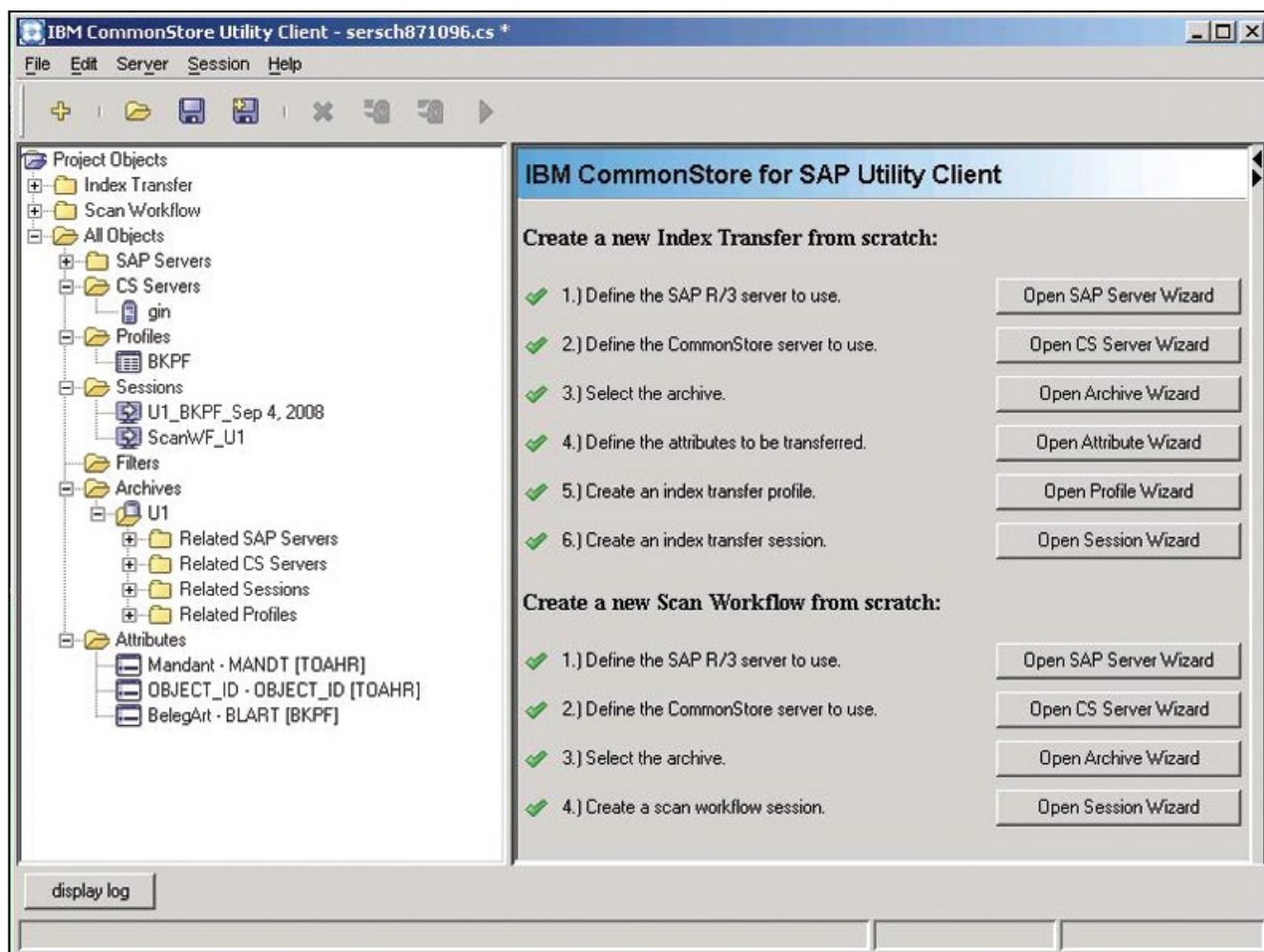


Figure 3: The IBM CommonStore for SAP utility client allows you to perform index transfers to IBM Content Manager or IBM Content Manager OnDemand software. The incremental index transfer capability helps improve performance when archiving large numbers of documents.

leverage cost-effective storage devices but still access SAP data at any time. While helping your business maintain independence from hardware upgrades and easing migration to new SAP releases, the CommonStore software can improve the performance of SAP systems and help your company address regulations for data retention.

Beyond basic data archiving, CommonStore for SAP software provides document management capabilities, so you can manage a wide range of information. By linking archived documents to SAP business objects, CommonStore for SAP software is designed to make business documents—from purchase

orders to human resources documents to inventory reports—available to authorized users virtually anywhere on your network. So multiple users can have security-rich, parallel access to documents, and authorized users can have access to documents without the delay caused by paper-based archive inquiries. The software also allows you to use cost-efficient storage media for the electronic archive repository.

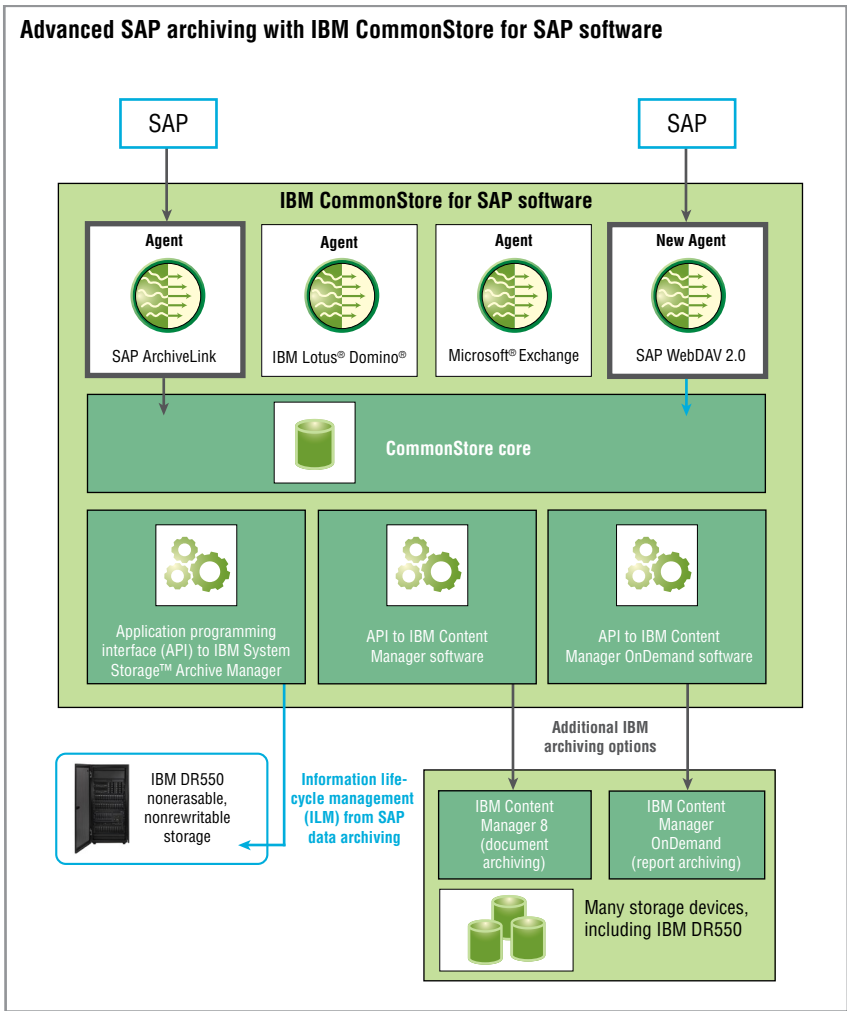


Figure 4: By using IBM CommonStore for SAP software with IBM Tivoli® Storage Manager software and an IBM System Storage DR550 storage device, you can take advantage of ILM from SAP retention management in a comprehensive, SAP-connected enterprise content management system.

Addressing regulations more efficiently

CommonStore for SAP software can help your business address government or internal requirements to retain particular types of business records, such as customer statements and securities transactions. When policies require retention of scanned versions of the original paper documents, CommonStore for SAP software automates the time-consuming procedures of linking, indexing and retrieving, substantially reducing the associated overhead costs. The software is designed to provide security-rich, controlled access to these archived documents for users with the proper permissions.

Enhanced WebDAV-enabled ILM from SAP retention management

By using CommonStore for SAP software with IBM Tivoli Storage Manager software and the protected IBM System Storage DR550 storage device, you can take advantage of the new ILM from SAP retention management capability. The award-winning, nonerasable, nonrewritable

DR550 device enforces physical retention at the device level. Leveraging its support for the SAP WebDAV Storage Interface 2.0 and the DR550 device, the CommonStore for SAP application enables you to place SAP-enforced retention periods and legal holds on many kinds of archived SAP transaction data, providing immutability and helping you meet your compliance regulations.

Optimizing performance

CommonStore for SAP helps improve the performance of your SAP system's database by routing inactive data to an external back-end archive management system. You can store millions of SAP objects on your choice of storage devices. Using the SAP GUI, you can then retrieve business content from these media and distribute it electronically. Faster access saves time

and money, and it helps increase the speed and accuracy of customer service, supply chain planning and other functions that depend on realtime data availability. Parallel optimized processes allow several users to access SAP objects simultaneously, further streamlining business operations.

The application also fosters better performance and protection of your enterprise systems. CommonStore for SAP software captures relevant system performance data in the CommonStore server log file. This information helps administrators determine how to balance their machine load—for example, the optimal number of processes for the given workload, environment and archived information to SAP business objects.

Giving users the content they need

CommonStore for SAP software puts SAP business content at users' fingertips—for all SAP and non-SAP users with proper authorization. Designed to make business documents securely available to authorized users anywhere on your network, CommonStore for SAP software can manage a wide range of information, including:

- *Inbound documents such as supplier invoices.*
- *Outbound documents that are normally printed and mailed.*
- *Reports and print lists like journals.*
- *Desktop files created by PC applications, such as standard office or computer-aided design (CAD) applications, as well as other documents created outside the SAP system.*

The CommonStore for SAP application also conveniently allows forms to be archived exactly as printed and linked to the SAP business objects. For example, large volumes of monthly billing statements or similar documents can be easily printed or archived as they were originally produced and accessed from SAP GUI clients.

Some of the major capabilities that CommonStore for SAP software delivers include:

- **A fully integrated content management repository.** Enables you to use SAP content along with other content types, presenting all related information from e-mails, images and faxes to SAP users and applications, and also leveraging content from within SAP Business Workflow.
- **Support for the creation of SAP workflows with attributes from the archiving client.** Allows the archiving client to create an SAP work item and transfer the index data gained from a scan process along with the IBM Content Manager software document ID to the SAP work item. The index data can also be transferred to the back-end repository along with the document.
- **Enhanced authorized access to SAP documents from non-SAP applications and vice versa.** Helps schedule, secure and speed the transfer of index information from SAP business objects, helping improve SAP system performance and content retrieval for non-SAP users. Plus, SAP users have rapid, in-SAP access to SAP-related content stored in the repository. This content can then be made available for SAP archiving or added to an SAP workflow.
- **Adding annotations to SAP documents.** Enables users to employ the integrated IBM Content Manager eClient tool to open, create, view and edit annotations of archived documents after they have opened an archived document with a standard application client like an SAP GUI.
- **Storage device support.** Offers more than 600 IBM or non-IBM devices to choose from by leveraging Tivoli Storage Manager software, providing flexibility to deploy the most appropriate device, depending on the life-cycle value of the content.
- **Bulk archiving for printed documents.** Archives electronic copies of your printouts and links the archived documents to the corresponding SAP business objects. This helps ensure that your documents are archived in the same format as you sent them, and that you can still access them from SAP software.

Part of a comprehensive information management infrastructure

CommonStore for SAP software is an integral part of the IBM enterprise content management portfolio of products, providing data and document archiving and enabling you to manage SAP-related and SAP-generated inbound and outbound documents. With support for open standards and the ability to leverage IBM enterprise content management repositories—Content Manager, Content Manager OnDemand or Tivoli Storage Manager software—these function-rich tools empower you to integrate and manage the full spectrum of digital information generated by today's dynamic businesses.

By integrating SAP and non-SAP business content into a single archive, CommonStore for SAP software can help boost your organization's efficiency. Most importantly, your organization's valuable information can be quickly and readily accessible to users regardless of application, enabling you to respond at a moment's notice to the demands of your employees, customers, partners and suppliers.

IBM CommonStore for SAP software at a glance

Supported SAP systems:

SAP R/3 Release 4.6c and later

SAP ECC 5.0 and later

Supported operating systems for CommonStore Server (32-bit):

HP-UX 11 V2 and V3

IBM AIX® V5.3 and V6.1

Microsoft Windows® Server 2003

Microsoft Windows Server 2008 (support for Content Manager 8.4 post GA)

Red Hat Enterprise Linux® 4.0 and 5.0

Sun SPARC Solaris 10

SUSE Linux Enterprise Server 9 and 10

Supported archive client software:

IBM Content Manager Enterprise Edition V8.3 and V8.4 client

IBM Content Manager OnDemand for Multiplatforms V8.3 and V8.4

IBM Tivoli Storage Manager V5.3.5 and later

Supported archive server software:

IBM Content Manager Enterprise Edition V8.3 and V8.4

IBM Content Manager for IBM z/OS® V8.3 and V8.4

IBM Content Manager OnDemand for IBM iSeries® software

IBM Content Manager OnDemand for Multiplatforms V8.3 and V8.4

IBM Content Manager OnDemand for z/OS

IBM Tivoli Storage Manager V5.3.5 or later



For more information

To learn more about how IBM CommonStore for SAP software can help your company better manage its SAP data, contact your IBM representative or IBM Business Partner, or visit:

[ibm.com/software/data/
commonstore/sap](http://ibm.com/software/data/commonstore/sap)

© Copyright IBM Corporation 2008

IBM Corporation
Software Group
3565 Harbor Boulevard
Costa Mesa, CA 92626-1420
U.S.A.

Produced in the United States of America
October 2008
All Rights Reserved

IBM, the IBM logo, and ibm.com are trademarks or registered trademarks of International Business Machines Corporation in the United States, other countries, or both. If these and other IBM trademarked terms are marked on their first occurrence in this information with a trademark symbol (® or ™), these symbols indicate U.S. registered or common law trademarks owned by IBM at the time this information was published. Such trademarks may also be registered or common law trademarks in other countries. A current list of IBM trademarks is available on the Web at "Copyright and trademark information" at ibm.com/legal/copytrade.shtml

Microsoft and Windows are trademarks of Microsoft Corporation in the United States, other countries, or both.

Linux is a registered trademark of Linus Torvalds in the United States, other countries, or both.

The information contained in this documentation is provided for informational purposes only. While efforts were made to verify the completeness and accuracy of the information contained in this documentation, it is provided "as is" without warranty of any kind, express or implied. In addition, this information is based on IBM's current product plans and strategy, which are subject to change by IBM without notice. IBM shall not be responsible for any damages arising out of the use of, or otherwise related to, this documentation or any other documentation. Nothing contained in this documentation is intended to, nor shall have the effect of, creating any warranties or representations from IBM (or its suppliers or licensors), or altering the terms and conditions of the applicable license agreement governing the use of IBM software.

Each IBM customer is responsible for ensuring its own compliance with legal requirements. It is the customer's sole responsibility to obtain advice of competent legal counsel as to the identification and interpretation of any relevant laws and regulatory requirements that may affect the customer's business and any actions the customer may need to take to comply with such laws. IBM does not provide legal advice or represent or warrant that its services or products will ensure that the customer is in compliance with any law.

* IBM CommonStore for SAP is a key offering in the content collection and archiving family of products from IBM. However, IBM CommonStore for SAP software extends its CommonStore heritage and does not use the new Content Collector e-mail management product code base.

IMD14058-USEN-00