



FileNet Business Activity Monitor

Danny Pidutti
Program Director, BPM Product Marketing
Information Management, IBM Software Group

Information Management software

Important Disclaimer

THE INFORMATION CONTAINED IN THIS PRESENTATION IS PROVIDED FOR INFORMATIONAL PURPOSES ONLY.

WHILE EFFORTS WERE MADE TO VERIFY THE COMPLETENESS AND ACCURACY OF THE INFORMATION CONTAINED IN THIS PRESENTATION, IT IS PROVIDED "AS IS", WITHOUT WARRANTY OF ANY KIND, EXPRESS OR IMPLIED.

IN ADDITION, THIS INFORMATION IS BASED ON IBM'S CURRENT PRODUCT PLANS AND STRATEGY, WHICH ARE SUBJECT TO CHANGE BY IBM WITHOUT NOTICE.

IBM SHALL NOT BE RESPONSIBLE FOR ANY DAMAGES ARISING OUT OF THE USE OF, OR OTHERWISE RELATED TO, THIS PRESENTATION OR ANY OTHER DOCUMENTATION.

NOTHING CONTAINED IN THIS PRESENTATION IS INTENDED TO, OR SHALL HAVE THE EFFECT OF:

- **CREATING ANY WARRANTY OR REPRESENTATION FROM IBM (OR ITS AFFILIATES OR ITS OR THEIR SUPPLIERS AND/OR LICENSORS); OR**
- **ALTERING THE TERMS AND CONDITIONS OF THE APPLICABLE LICENSE AGREEMENT GOVERNING THE USE OF IBM SOFTWARE.**

Agenda

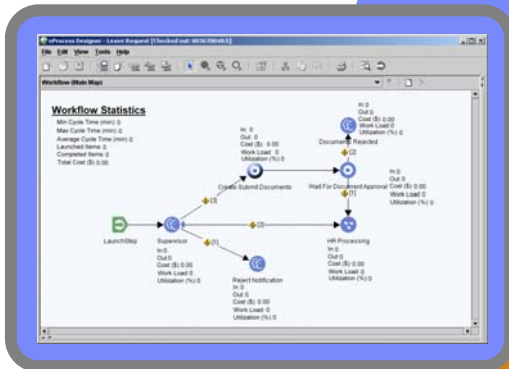
- BPM Market Trends
- What is BAM
- BAM vs. Current Approaches
- FileNet vs. BI
- Key Capabilities
- Architecture
- Things you should know

FileNet Business Process Management (BAM)

Optimize



Automate



Integrate



BPM Market Trend – Performance Management

From Process to Performance Management

- Deliver Competitive advantage by delivering:
 - Better Productivity & Service
 - Better Decisions
 - ...At a lower cost
- Directly control operational performance
- Greater visibility into operations
- React to events as they occur

Gartner

“Corporate Performance management (CPM) is one of the hottest trends in business intelligence. Under the CPM umbrella are the processes, methodologies, metrics and technologies for enterprises to measure, monitor and manage business performance.”

“The real-time enterprise needs real-time warning; fast reaction times are imperative to increasing business efficiency.”

Taking BPM to the Next Level

Business Activity Monitoring

- ◆ Real-time operational visibility
- ◆ Personalized views – by role, job function or individual
- ◆ BPM Metrics correlated with other data sources
- ◆ Comprehensive event detection & management
- ◆ Threshold Monitoring & alert creation
- ◆ BPM actions automatically tied to alerts



What is BAM?

- **“BAM is a way to gain meaningful, instant visibility into enterprise operations”**

- Gartner

- **Works by capturing events from operational systems, then correlating these events with relevant contextual data.**

BAM vs. Current Operational Reporting Approaches

- Spreadsheets, SQL queries, local databases
 - Problems: consistency, security, poor user productivity; ability to analyze only one database
- ERP/CRM reporting and analysis
 - Problems: great for reporting off one system; most companies have many
- Homegrown solutions
 - Problems: starts out cheap, gets more expensive with every expansion and evolution. High maintenance costs

BAM vs. BI

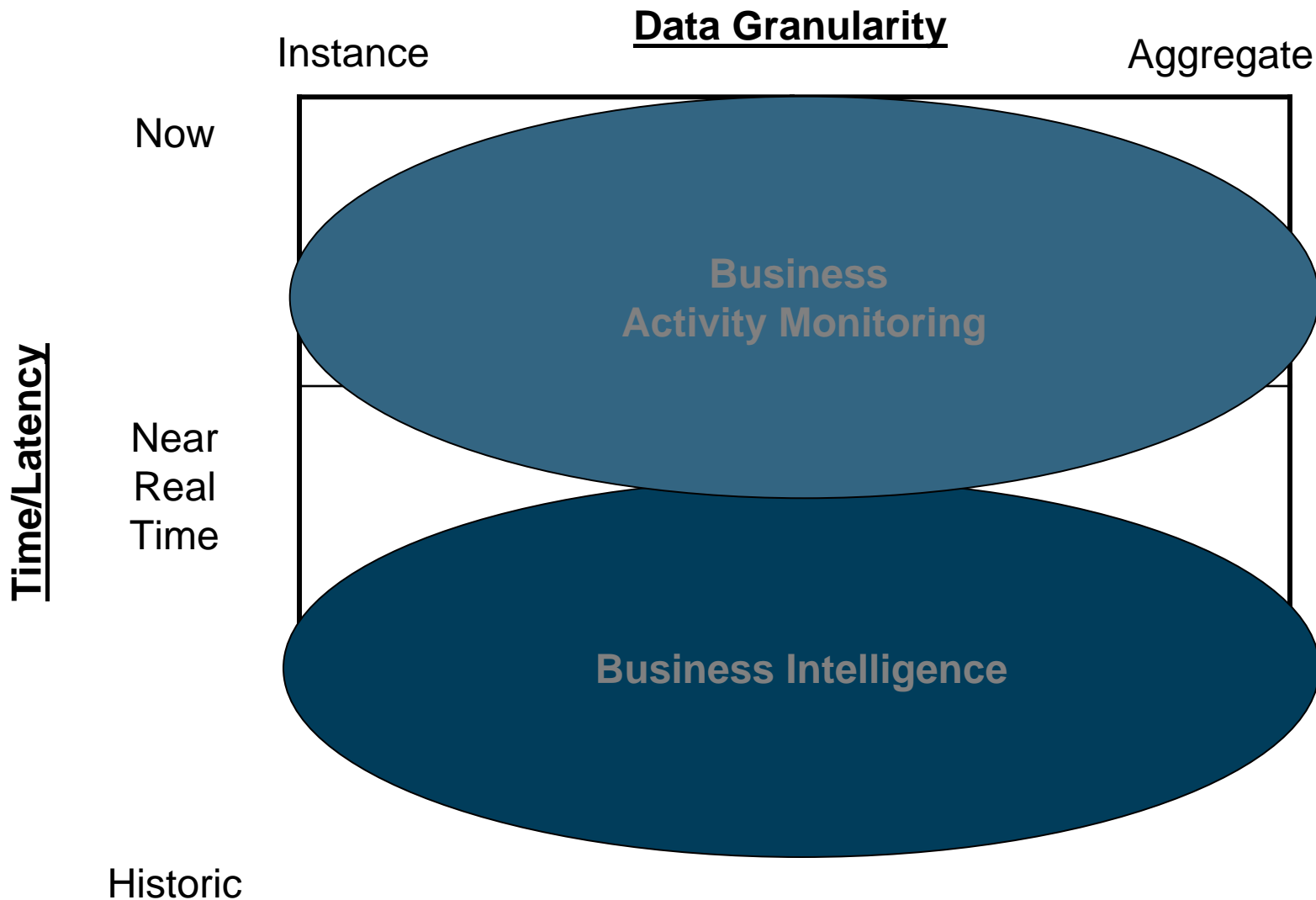
BAM

- Real-time/Right-time
- Event driven
- Business user oriented
- Business rules driven
- Information oriented
- Actionable

“BI-Style” REPORTING

- Batch
- Query driven
- Analyst/power user oriented
- Sift through reports to find trends
- Data oriented
- Historical

Providing end to end visibility



Key *BAM* Capabilities

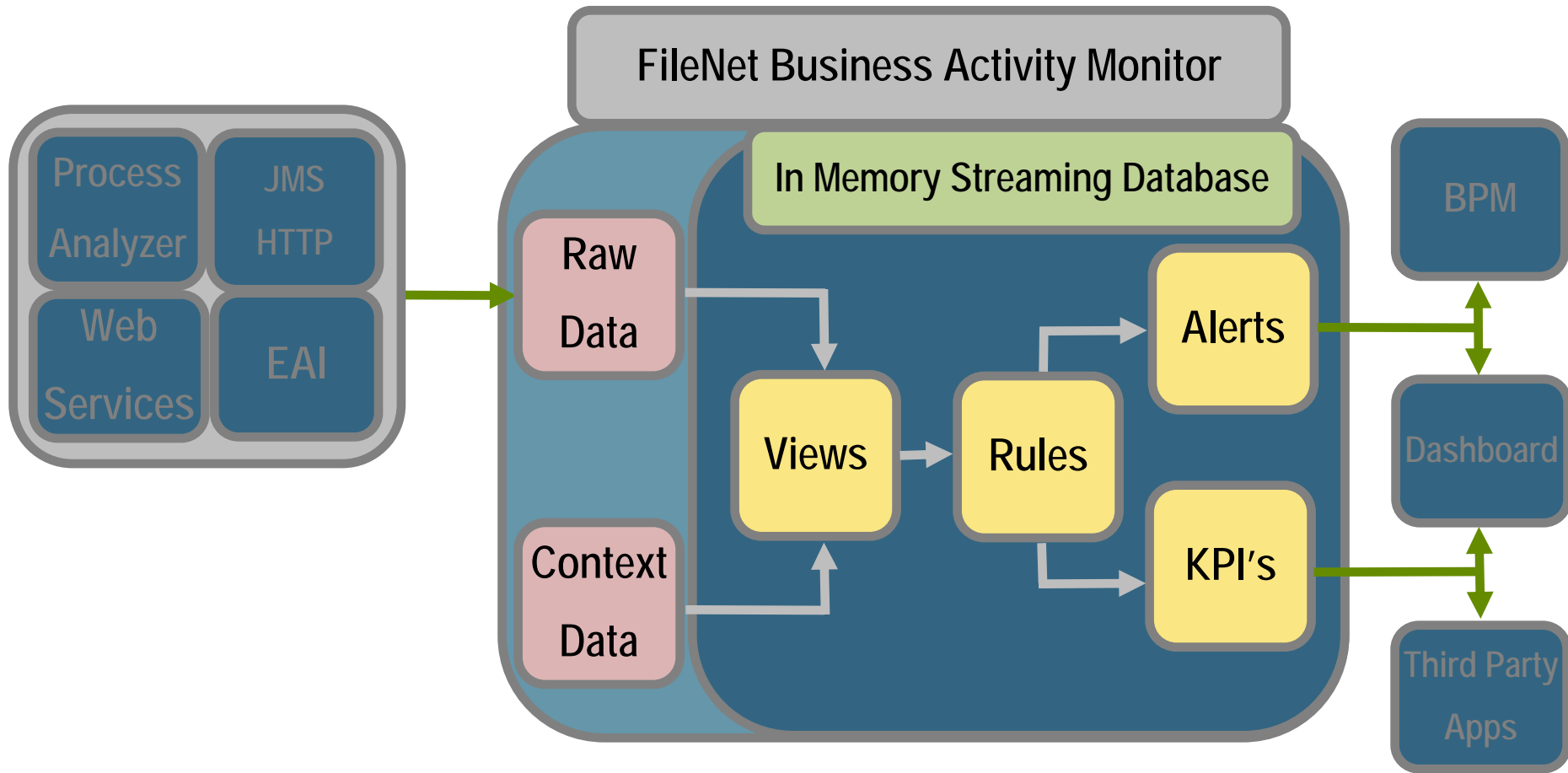
- Operational Dashboard
 - Powerful Flash based business user friendly UI
- Event-Driven Processing
 - Captures changes to business processes (events and data) as they occur
- Real-time Event & Data Integration
 - Aggregates and correlates operational and historical data across systems
- Rule-based Monitoring & Reporting
 - Powerful & flexible engine permits complex rules creation and on-the-fly updates
- Comprehensive Exception and Alerting
 - Rule-based alerting with contextual data; automated action integrated with workflow



In Memory Streaming Database

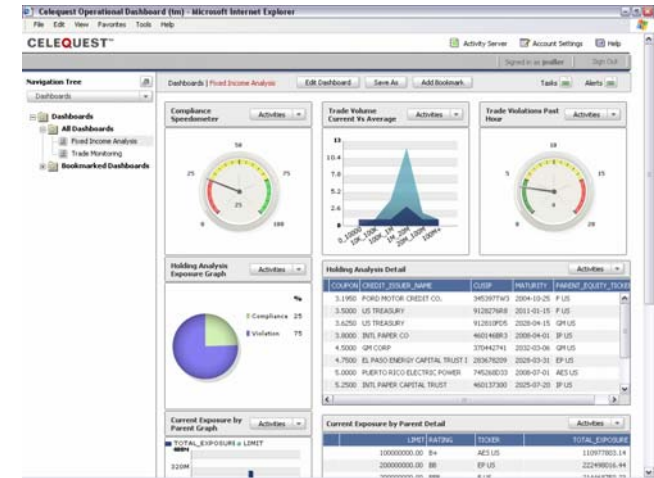
- Memory based Database
- Supports Sliding Windows
- Support for Event and Time based window frames
- Support for User Defined Fields
- Support for Cubes and Dimensional modeling
 - Support for Plans
- Time-series support - ability to track spikes and trends
- Views are materialized and incrementally maintained

BAM Architecture



Operational Dashboards

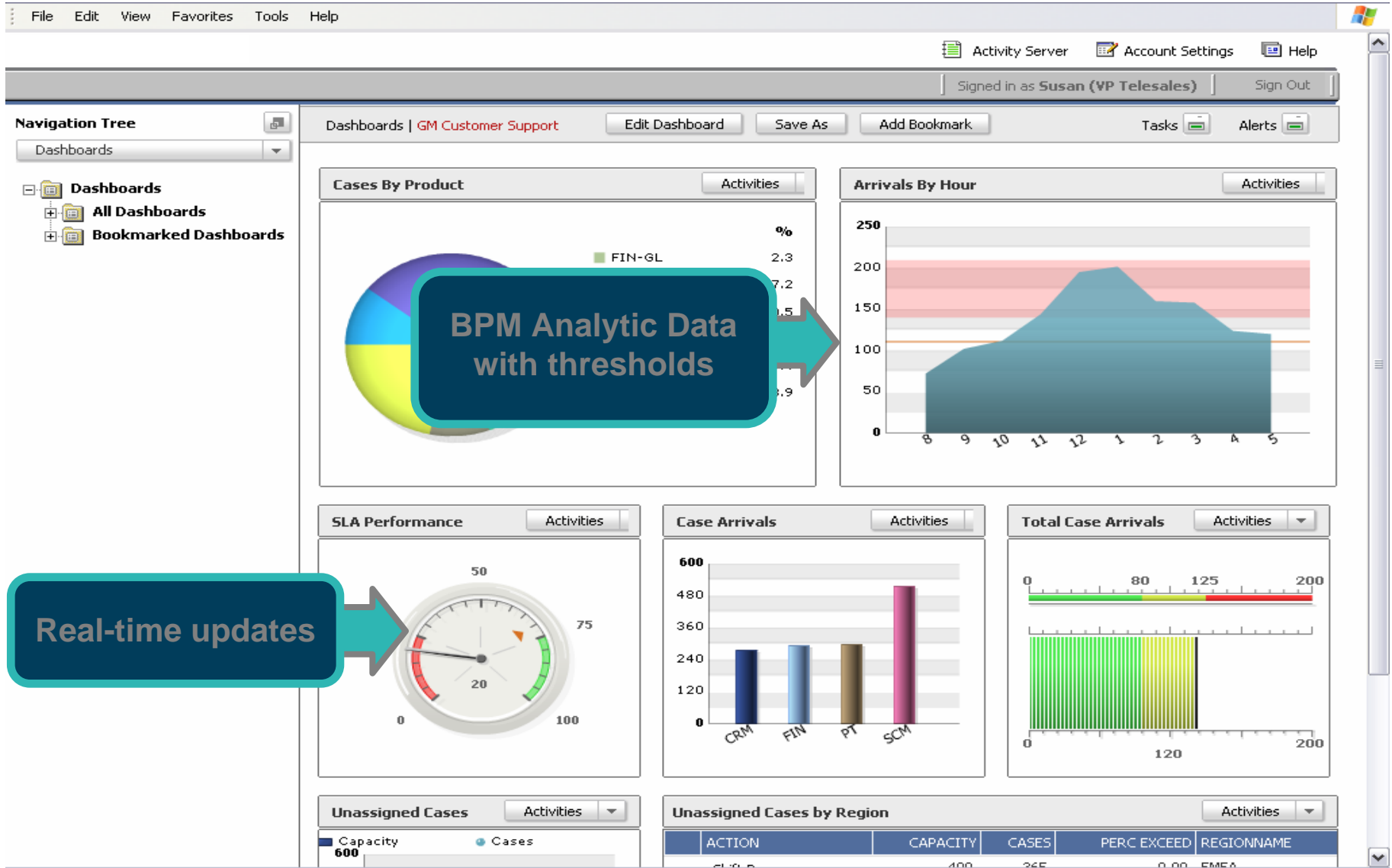
- Continuous Operational Visibility
 - Metrics continuously updated
 - Correlation across multiple operational systems
 - Temporal “time-based” processing
- Self-Service Interface
 - Customizable by business users
- Business Rules
 - Configurable rule and alert creation
 - Graphical watch points
 - User goal setting and tracking
- Role Based
 - Operational visibility by job title or function
 - Personalized Consoles by role, function or individual - with central control
 - Automatic data filtering
 - Role based security



VP Dashboard
(Consolidated Summary)



Line of Business Dashboard
(Divisional Performance)



Real-time updates

BAM = "Operational" Performance Management

Sense

Correlate

Escalate

SAP
SIEBEL



Legacy Apps

External

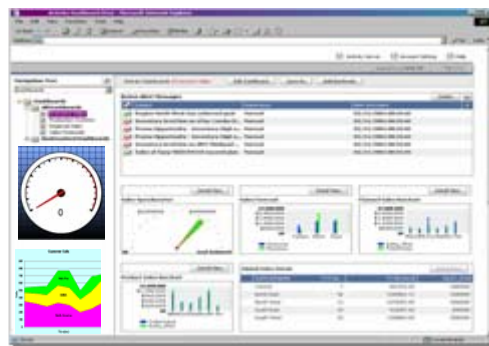
Internal

Events/metrics



BPM

Dashboard



Drill Down



Analysis



Visual Alert



Launch Process



Send e-Mail



Send Page



Send SMS



Invoke Web Service

Alerts Launching a Business Process

File Edit View Favorites Tools Help

Activity Server Account Settings Help

Signed in as VP Quality (Vice President Quality) Sign Out

Dashboards | Global Quality Mgmt Edit Dashboard Save As Add Bookmark Tasks

Navigation Tree

- Dashboards
 - All Dashboards
 - Bookmarked Dashboards

All Alert Messages Alert Manager Delete

Subject	Importance	Alert Activated
PHONES Yield Drop at 2004-02-15 06:5...	Normal	08/27/2004 12:39:29
Redwood City Yield Drop at 2004-02-1...	High	08/27/2004 12:39:28
PHONES Yield Drop at 2004-02-09 16:2...	Normal	08/27/2004 12:35:52
Redwood City Yield Drop at 2004-02-0...	High	08/27/2004 12:35:52
Redwood City Yield Drop at 2004-02-0...	High	08/27/2004 12:33:44
PHONES Yield Drop at 2004-02-01 15:2...	Normal	08/27/2004 12:33:23
Redwood City Yield Drop at 2004-01-2...	High	08/27/2004 12:27:39
PHONES Yield Drop at 2004-01-25 03:2...	Normal	08/27/2004 12:27:31

Alerts & Events

Yield Six Hour - Phones Activities

75.25

Yield One We Phones Activities

68.97

Yield Running - Phones Activities

77.1

Yield Trends Activities

Yield_6Hour Yield_12Hour

Weekly Yields Activities

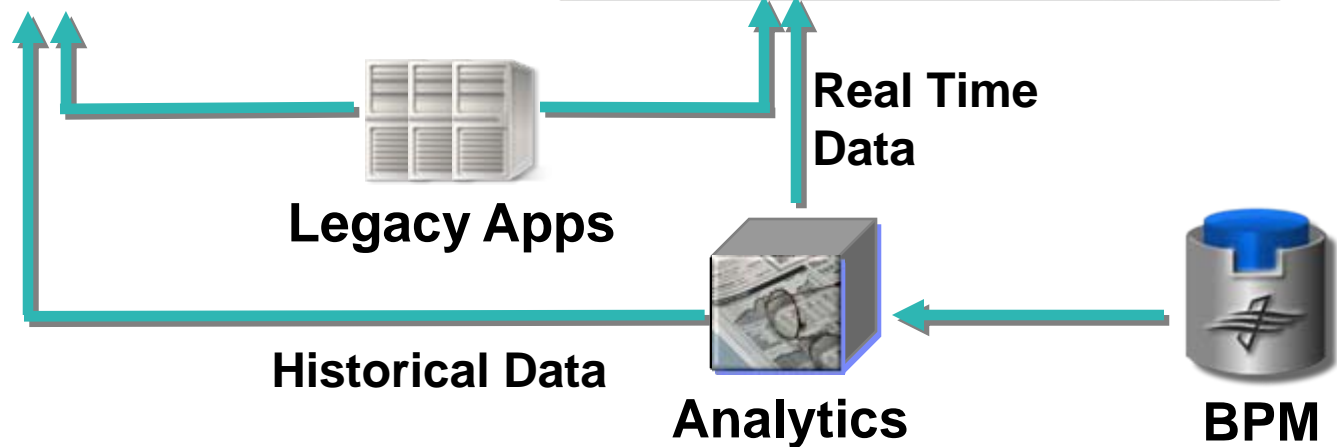
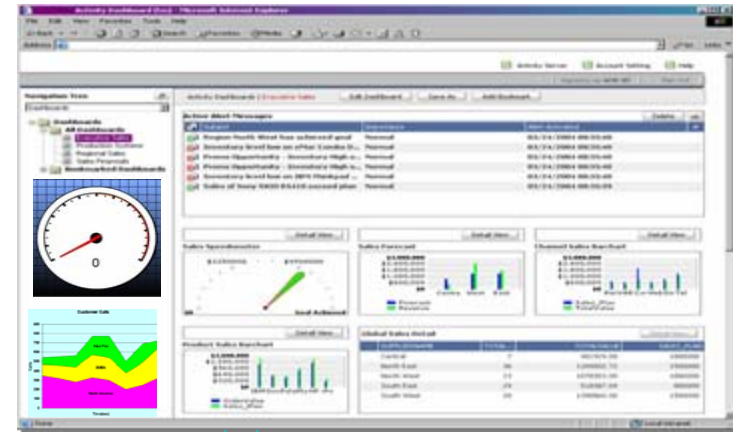
	WEEKNO	YIELD_6HOUR	YIELD_12HOUR	YIELD_7DAY	YIELD_RUNNING
	3	93.75	80.76	78.94	78.94
	4	90.00	87.87	87.95	87.95
	5	88.57	85.18	80.79	80.79
	6	60.00	53.84	78.23	78.23

FileNet BAM and Business Intelligence

Cognos



BAM





Thank you!

Information Management software

© Copyright IBM Corporation 2007

IBM

3565 Harbor Boulevard

Costa Mesa, CA 92626-1420

USA

Printed in the USA

01-07

All Rights Reserved.

IBM and the IBM logo are trademarks of IBM Corporation in the United States, other countries, or both. All other company or product names are registered trademarks or trademarks of their respective companies.

The IBM home page on the Internet can be found at **ibm.com**

