

IBM Sterling Gentran:Server for Windows



SAP Gateway Configuration Guide

Version 5.3.1

IBM Sterling Gentran:Server for Windows



SAP Gateway Configuration Guide

Version 5.3.1

Note

Before using this information and the product it supports, read the information in "Notices" on page 19.

This edition applies to the 5.3.1 version of IBM Sterling Gentrans:Server for Microsoft Windows and to all subsequent releases and modifications until otherwise indicated in new editions.

© **Copyright IBM Corporation 1996, 2012.**

US Government Users Restricted Rights – Use, duplication or disclosure restricted by GSA ADP Schedule Contract with IBM Corp.

Contents

Chapter 1. The SAP Gateway.	1
About the SAP Gateway	1
SAP Gateway Properties Dialog Box	2
SAP Server Monitor Dialog Box	3
SAP Gateway Mailbox Properties - General Properties Tab	3
SAP Gateway Mailbox Properties - Content Type Tab	5
SAP Gateway Mailbox Properties - Connection Parameters Tab	6
SAP Gateway Mailbox Properties - ALE Properties Tab	7
SAP Gateway Mailbox Properties - RFC Properties Tab	8
Mailbox Properties Dialog Box - Addressing Tab	9
Mailbox Properties Dialog Box - Gateway Tab	10
Mailbox Properties Dialog Box - Delivery Rules Tab	11

Mailbox Properties Dialog Box - Security Tab	12
--	----

Chapter 2. Configuring your SAP Gateway	13
The SAP Gateway Configuration Process	13
Configuring your SAP Gateway	13
Connection Parameters	14
Creating SAP Gateway Mailboxes	15
Modifying Gateway Mailbox Configuration Properties	17
Adding and Modifying Gateway Mailbox Properties	17
Notices	19
Index	23

Chapter 1. The SAP Gateway

About the SAP Gateway

The SAP Gateway defines the relationships between the Mailbox Server Manager and the SAP file exchange system.

The SAP Adapter supports two data transfer connection methods:

- Remote Function Call (RFC) - a file-based method for transferring data between the SAP system and the SAP Adapter.
- Application Link Enabling (ALE) - a memory-based method for transferring data between the SAP system and the SAP Adapter.

You must configure the SAP Gateway before you can begin transferring or receiving messages.

In addition to gateway properties, you must also configure properties for SAP mailboxes. When you configure a mailbox for use with the SAP Gateway, you define the following:

- Transfer mode
- Recipients
- Content type for messages and attachments
- Data mapping properties

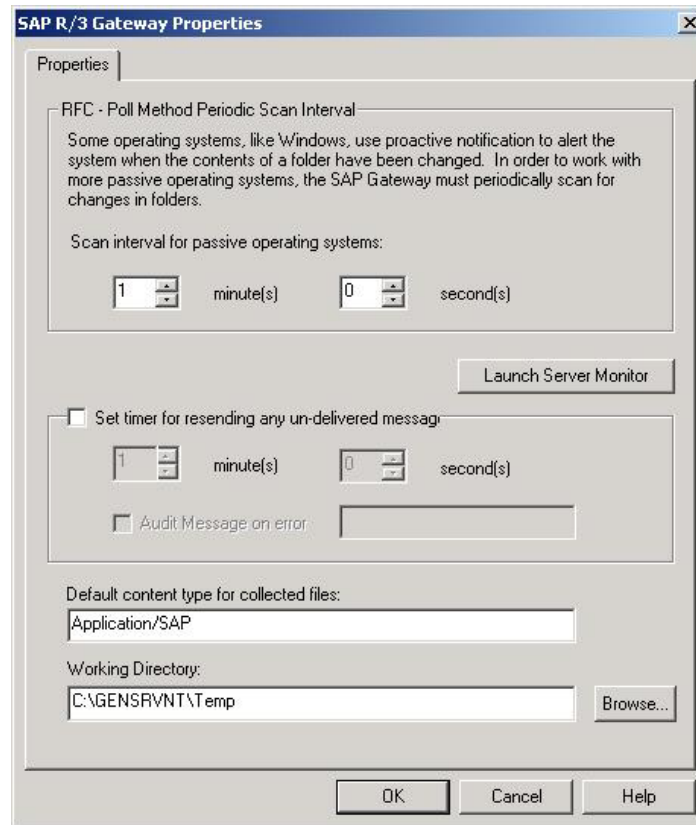
When a message is sent to the SAP Gateway, the message status is changed to "Sent." When the SAP Gateway submits a process to the SAP server, the message status is changed to "Sent Third-Party." When the SAP process completes, the message status is changed to "Delivered" (if the process was successful) or to "Delivery Failed" (if the process was unsuccessful).

See the Document Tracking chapter in the *IBM® Sterling Gentran:Server® for Microsoft Windows User Guide* for additional information.

SAP Gateway Properties Dialog Box

The SAP Gateway Properties dialog box defines the properties of the SAP Gateway.

This diagram illustrates the SAP Gateway Properties dialog box.



This table describes the parts of the SAP Gateway Properties dialog box.

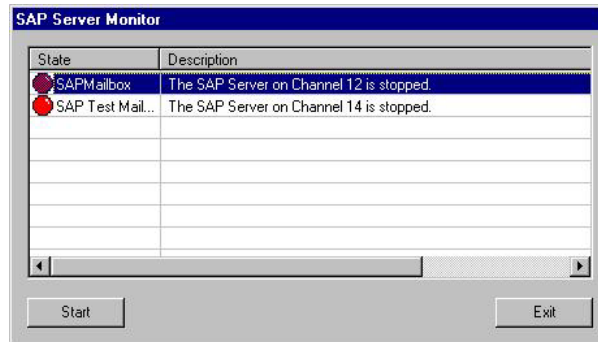
Part	Function
Scan interval for passive operating systems minutes/seconds	Specifies the interval at which the contents of the SAP folders are scanned on systems that do not send automatic notifications of changes (passive operating systems). Intervals are defined in the minute(s) and second(s) boxes.
Launch Server Monitor	Accesses the SAP Server Monitor dialog box, which enables you to start the SAP Server.
Set timer for resending any undelivered messages minutes / seconds	Specifies the time interval at which you want the system to resend messages that were not delivered due to a connection loss. This interval can be expressed in: <ul style="list-style-type: none"> minute(s) second(s)
Audit Message on error	Specifies an error message number for which you want the system to generate an audit message when messages need to be resent.
Default content type for collected files	Defines the default content type for files collected.
Working Directory	Defines the temporary working directory used with this gateway. The default directory is C:\GENSRVNT\Bin\Temp or click Browse to select another Working Directory location.

Part	Function
Browse	Accesses the Choose Communication Queue dialog box, which allows you to select the appropriate working directory.

SAP Server Monitor Dialog Box

The SAP Server Monitor enables you to start and monitor the SAP Server.

This diagram illustrates the SAP Server Monitor dialog box.



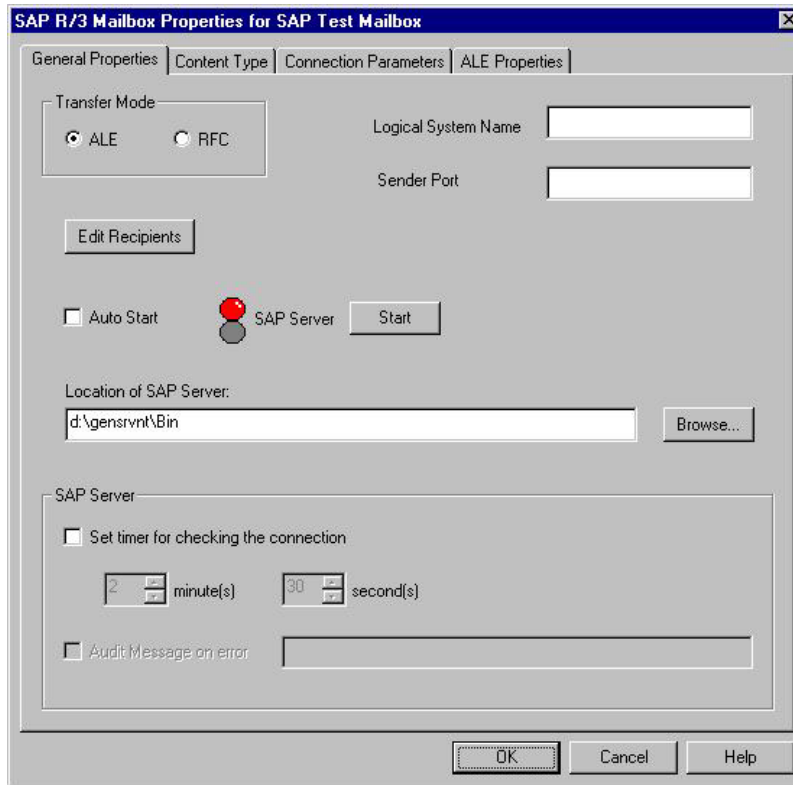
This table describes the parts of the SAP Server Monitor dialog box.

Part	Function
State/Description list	Displays the SAP Mailbox Servers and brief descriptions.
Start	Starts the selected mailbox server.
Exit	Closes the SAP Server Monitor.

SAP Gateway Mailbox Properties - General Properties Tab

The SAP Mailbox Properties dialog box defines the properties of SAP Gateway Mailboxes.

This diagram illustrates the General Properties tab of the SAP Mailbox Properties dialog box.



This table describes the parts of the General Properties tab of the SAP Mailbox Properties dialog box.

Part	Function
Transfer Mode	Defines the preferred method of data transference. Valid options are: <ul style="list-style-type: none"> • ALE - Application Link Enabling • RFC - Remote Function Call
Logical System Name	Specifies the system name defined in SAP. Used with ALE.
Sender Port	Specifies the port name defined for the Logical System in the SAP system. Used with ALE.
Edit Recipients	Enables you to access the Edit Recipients dialog box and select message recipients for messages that you receive from SAP R/3.
SAP Server	Toggles between options on how you want to start the SAP server. Options are: <ul style="list-style-type: none"> • Start - manually starts/stops the SAP Server program • Auto Start - auto starts the SAP Server program
Location of SAP Server	Specifies where the SAP server is located. You can manually enter the path and filename or click Browse to navigate to the location.
Set timer for checking the connection	Enables you to specify the time interval at which you want the system to verify the connection between the SAP gateway and the SAP system. This interval can be expressed in: <ul style="list-style-type: none"> • minute(s) • second(s)

Part	Function
Audit message on error	Specifies an error message number for which you want the system to generate an audit message when messages need to be resent. This option is only available when the Set timer for checking the connection check box is selected.

SAP Gateway Mailbox Properties - Content Type Tab

This diagram illustrates the Content Type tab of the SAP Mailbox Properties dialog box.

This table describes the parts of the Content Type tab of the SAP Mailbox Properties dialog boxes.

Part	Function
Content Type of Attachment from SAP	Specifies how you want to manage content type information on attachments received from SAP. Valid options are: <ul style="list-style-type: none"> Map Content Type from Data for each Attachment - activates Data Mapping section of dialog box. Use this Content Type for each attachment - enables you to specify a content type to apply to each attachment.
Content Type of Messages from SAP	Specifies how you want to manage content type information on messages received from SAP. Valid options are: <ul style="list-style-type: none"> Use the Content Type of the first Attachment for each message. Use this Content Type for each message - enables you to specify a content type that you want to apply to each message.

Part	Function										
Data Mapping	Used when the Map Content Type from Data for each Attachment option is selected. Selecting the appropriate check box enables you to map Content type, content subtype, Subject, or Email Address from data received. Record ID, Found in, and Map Pos are required fields. For example: <table border="1"> <thead> <tr> <th>Record ID</th> <th>Found In</th> <th>Qualifier</th> <th>Found In</th> <th>Map Pos</th> </tr> </thead> <tbody> <tr> <td>EDI_DC</td> <td>1-6</td> <td>ORDERS</td> <td>419-424</td> <td>419-424</td> </tr> </tbody> </table>	Record ID	Found In	Qualifier	Found In	Map Pos	EDI_DC	1-6	ORDERS	419-424	419-424
Record ID	Found In	Qualifier	Found In	Map Pos							
EDI_DC	1-6	ORDERS	419-424	419-424							

SAP Gateway Mailbox Properties - Connection Parameters Tab

This diagram illustrates the Connection Parameters tab of the SAP Mailbox Properties dialog box.

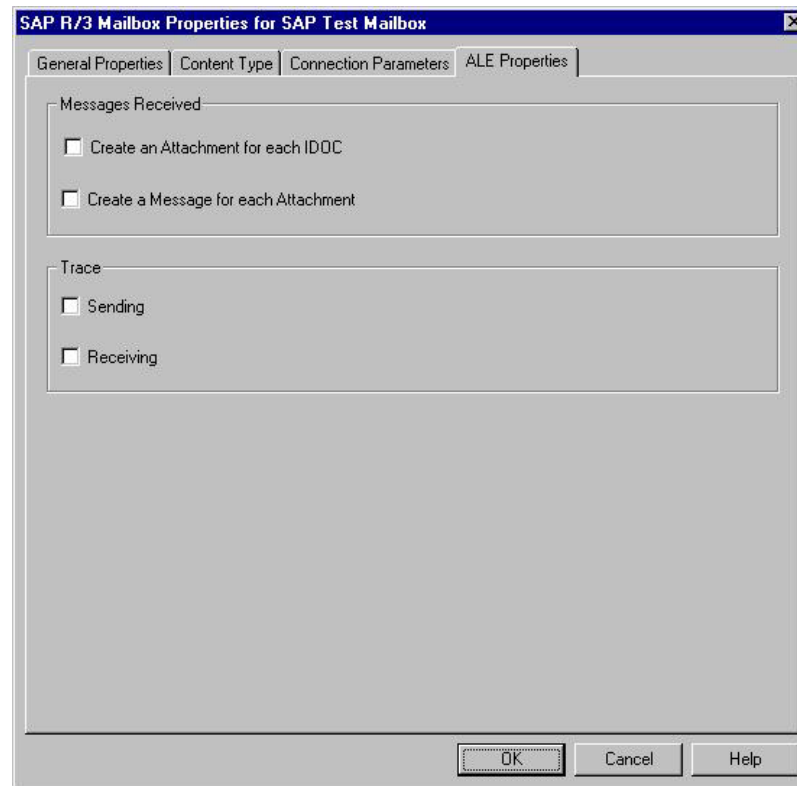
This table describes the parts of the Connection Parameters tab of the SAP Mailbox Properties dialog box.

Part	Function
Function Module	Name of the function module called to upload inbound IDoc data files (such as EDI_DATA_INCOMING).
Release	Identifies the release of the SAP system (ex. -3 represents the IDoc for SAP 3.x products).
System ID	Identifies the second part of the Server Name field on SAP transaction SM51.
Username	Identifies the SAP system user ID (Upper case).
User Password	Identifies the user password (in uppercase type).

Part	Function
System Client	Identifies the SAP system client as contained in the MANDT field of the IDoc.
System Language	Identifies the SAP users language. The default is E for English.
Application Server	Identifies the application server (the first part of the Server Name field on SAP transaction SM51).
System ID Number	Two-digit system identification number (the third part of the Server Name field on SAP transaction SM51)
Gateway Server	Identifies the gateway server from SAP transaction SE38. This value is case-sensitive.
Service	Identifies the SAP service from SAP transaction SE38.
Port	Identifies the SAP logical system port. This is typically SAP<SAP System Name> (from SAP transaction WE21).

SAP Gateway Mailbox Properties - ALE Properties Tab

This diagram illustrates the ALE Properties tab of the SAP Mailbox Properties dialog box, which is only displayed if you selected the ALE transfer mode on the General tab.

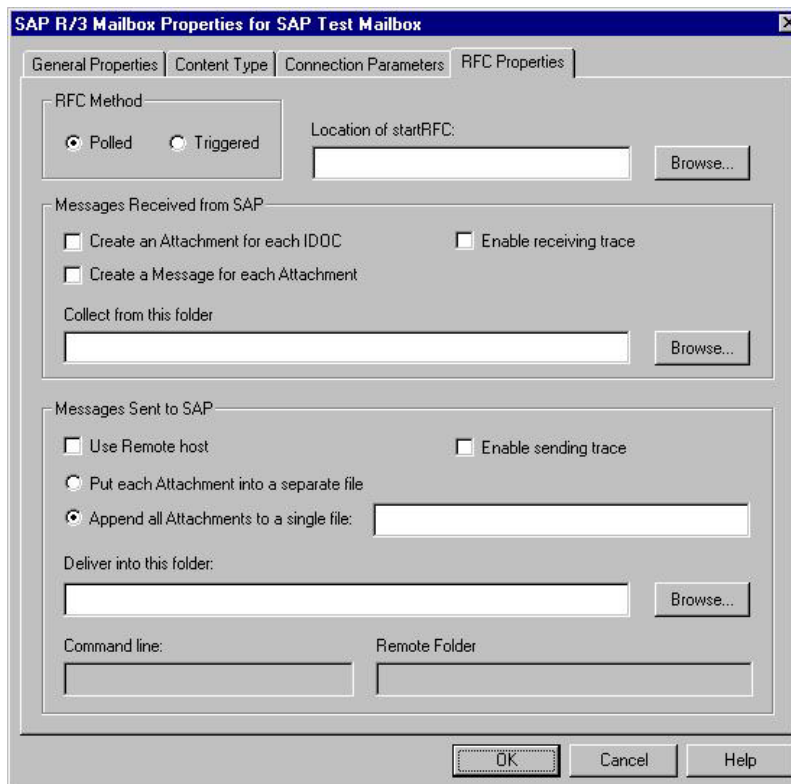


This table describes the parts of the ALE Properties tab of the SAP Mailbox Properties dialog box.

Part	Function
Messages Received	<ul style="list-style-type: none"> • Create an attachment for each IDoc - specifies that you want a separate attachment created for each IDoc received. This is recognized by the SAP IDoc Control record. • Create a message for each attachment - specifies that you want a separate message created for each attachment.
Trace	<ul style="list-style-type: none"> • Sending - traces processing errors that occur during a send operation in SAP. • Receiving - traces processing errors that occur during a receive operation in SAP.

SAP Gateway Mailbox Properties - RFC Properties Tab

This diagram illustrates the RFC Properties tab of the SAP Mailbox Properties dialog box, which is only displayed if you selected the RFC transfer mode on the General tab.



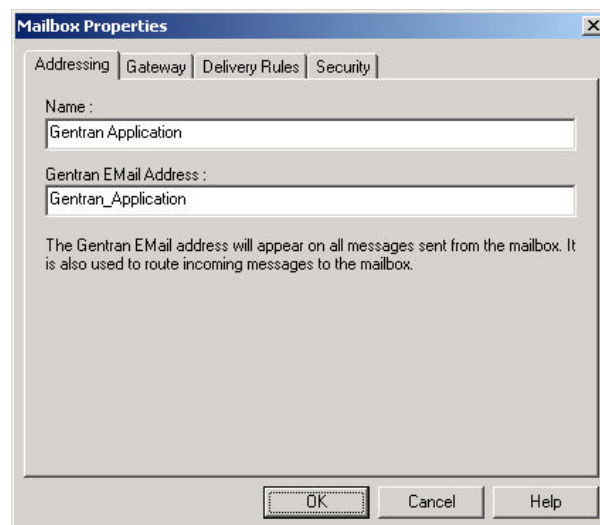
This table describes the parts of the RFC Properties tab of the SAP Mailbox Properties dialog box.

Part	Function
RFC method	<ul style="list-style-type: none"> • Polled - SAP gateway polls its system to determine whether a message has been received. • Triggered - SAP notifies the SAP gateway that it has sent a message.
Location of startRFC (for sending to SAP)	Identifies the path to the SAP startRFC.exe program. You can manually type the full path name or click Browse to navigate to the correct location.

Part	Function
Messages Received from SAP	<p>Specifies how you want to manage messages and attachments received from SAP. Options are:</p> <ul style="list-style-type: none"> • Create an attachment for each IDoc - specifies that you want a separate attachment created for each IDoc received. This is recognized by the SAP IDoc Control record. • Enable receiving trace - traces processing errors that occur during a receive operation in SAP. • Create a message for each Attachment - specifies that you want a separate message created for each attachment. • Collect from this folder - Specifies a specific folder from which you want to retrieve messages received from SAP. You can manually type the path to this folder or click Browse to navigate to the location.
Messages Sent to SAP	<ul style="list-style-type: none"> • Use remote host - select if the SAP Host system is on a remote server. • Enable sending trace - traces processing errors that occur during a send operation in SAP. • Append all attachments to a single file. • Put each attachment into a separate file (you must specify the file and path). • Deliver into this folder - specifies a path and filename where you want attachments sent to SAP to be delivered (or click Browse). • Command Line - activated when using a remote host. Enables a command to be executed like an FTP script from the local machine to the remote folder. • Remote Folder - Activated when using a remote host. Specifies the name of the folder on the remote host. This is the folder used on the Startup command and it is also the folder that is passed to the Command Line as the first argument.

Mailbox Properties Dialog Box - Addressing Tab

The following shows an example of the Addressing tab of the Mailbox Properties dialog box.

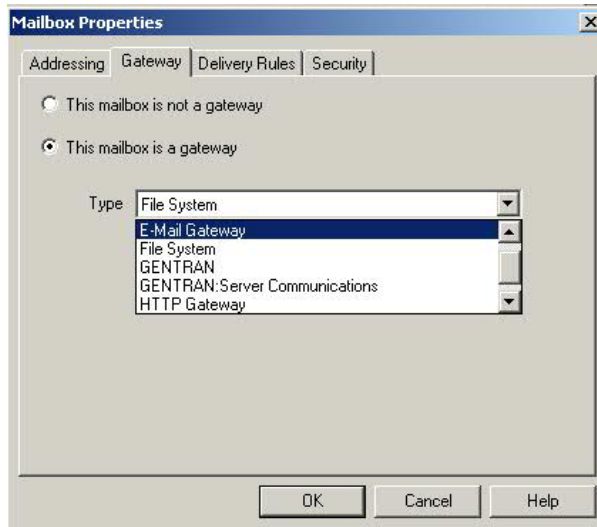


The following table describes the parts of the Addressing tab.

Part	Function
Name	Defines the name of the mailbox.
Gentran EMail Address	Defines the Sterling Gentran:Server email address for messages sent from the mailbox.

Mailbox Properties Dialog Box - Gateway Tab

The following shows an example of the Gateway tab of the Mailbox Properties dialog box.

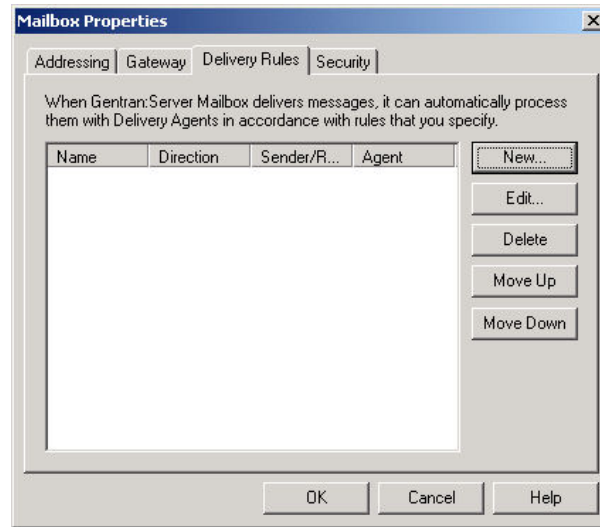


The following table describes the parts of the Gateway tab.

Part	Function
Gateway	Specifies whether the mailbox is or is not a gateway.
Type	Specifies the type of gateway. Active when "This mailbox is a gateway" is selected. Valid values are: <ul style="list-style-type: none"> • Connect:Direct • E-Mail • File System • Gentran • Gentran:Server Communications • HTTP • SAP
Configure	Enables you to configure properties for a selected gateway.

Mailbox Properties Dialog Box - Delivery Rules Tab

The following shows an example of the Delivery Rules tab of the Mailbox Properties dialog box.



The following table describes the parts of the Delivery Rules tab.

Part	Function
Name	Defines the name of the delivery rule.
Direction	Identifies whether the rule is run when sending or receiving a message.
Sender/Recipient	Identifies the mailbox of the sender or recipient. The mail address can be specified in addition to the mailbox name.
Agent	Identifies the name of the delivery agent to be run.
New	Creates new delivery rules.
Edit	Edits existing delivery rules.
Delete	Deletes the selected delivery rules.
Move Up	Moves the selected delivery rule up in the processing order.
Move Down	Moves the selected delivery rule down in the processing order.

The following shows an example of the New/Edit Delivery Rule dialog box.



Mailbox Properties Dialog Box - Security Tab

The Security tab of the Mailbox Properties dialog box defines the level of access users have for the mailbox.

The following shows an example of the Security tab of the Mailbox Properties dialog box.



The following table describes the parts of the Security tab.

Part	Function
User list	Defines users and groups that have access to mailbox.
Type of Access	Designates level at which a user can interact with a mailbox. Values are: <ul style="list-style-type: none">• Full control• Read• Write
Add	Enables you to grant mailbox access to users or groups.
Remove	Enables you to remove mailbox access for a user or group.

Chapter 2. Configuring your SAP Gateway

The SAP Gateway Configuration Process

This table lists the stages in which you configure your SAP gateway.

Stage	Description
1	Configure the SAP gateway-level properties. See <i>Configuring Your SAP Gateway</i> for instructions.
2	Create the gateway mailboxes that you intend to use. See <i>Creating SAP Gateway Mailboxes</i> for instructions.

Configuring your SAP Gateway

The SAP gateway is used for sending and receiving messages through an SAP messaging system. This procedure configures gateway-level properties.

Before you begin

Before you begin configuring your SAP gateway you must:

- Install and configure your SAP messaging software. See the documentation that came with your SAP messaging software for instructions.
- Install the SAP gateway. See the *Installation Guide* for step-by-step installation instructions.

About this task

Note: To configure RFC properties or ALE properties at the mailbox level, create the mailbox and then select the RFC Properties tab or the ALE Properties tab of the SAP Mailbox Properties dialog box.

Use this procedure to configure SAP gateway properties.

Procedure

1. Start the **Mailbox Server Manager**.
2. From the gateways folder, right-click on **SAP** and select **Properties**.
The system displays the SAP gateway Properties dialog box.
3. Set the RFC period scan interval.
4. To launch the SAP server for a particular SAP mailbox, do the following:
 - a. Click **Launch Server Monitor**.
 - b. Select the appropriate mailbox.
 - c. Click **Start**.
 - d. Click **Exit**.
5. To specify a time interval for which you want the system to resend undelivered messages, do the following. Otherwise, continue with Step 7.
 - a. Select **Set timer for resending undelivered messages**.
 - b. Enter the time interval.

6. To specify an error message for which you want the system to generate an audit message, do the following:
 - a. Select **Audit Message on error**.
 - b. Enter the error message number.
7. Verify that the value in the Default content type for collected files box is accurate.
8. Verify that the path to the Working Directory is accurate.
9. Click **OK** to complete the configuration of this gateway.

Connection Parameters

This topic lists the connection parameters for both ALE and RFC transfer modes.

Connection parameters for ALE

This table describes the connection parameters required for the ALE transfer mode.

Field	Required on Client?	Required on Server?
Function Module	Yes Note: If this field is empty, the system uses a release dependent default.	No
Release	Yes	No
System ID	No	No
User	Yes	No
User Password	Yes	No
System Client	Yes	No
System Language	Yes	No
Application Server	Yes	No
System ID Number	Yes	No
Gateway Server	Yes	Yes
Service	No	Yes
Port	No	No

Connection parameters for RFC

This table describes the connection parameters required for the RFC transfer mode.

Field	Required Inbound?	Required Outbound?
Function Module	No	Yes
Release	No	Yes
System ID	No	Yes
User	No	Yes
User Password	No	Yes
System Client	No	Yes
System Language	No	Yes
Application Server	No	Yes

Field	Required Inbound?	Required Outbound?
System ID Number	No	Yes
Gateway Server	No	Yes
Service	No	Yes
Port	No	Yes

Creating SAP Gateway Mailboxes

About this task

Use this procedure to create SAP Gateway mailboxes.

Procedure

1. Start the Mailbox Server Manager.
2. Right-click the **Mailboxes** folder icon and select **New**.
The system displays the Mailbox Creation Wizard dialog box.
3. Enter the name and description of the mailbox that you are creating and click **Next**.
4. Enter the Mailbox Alias and click **Next**.
5. From the What type of Mailbox do you want to create list, select **SAP** and click **Next**.
6. Select the number of days that you want the message to stay in the system and click **Next**.
7. To restrict user access to this mailbox, do the following:
 - a. Select the user.
 - b. Click either **Edit** or **Remove**.
 - c. Make the desired changes.
 - d. Click **OK**.
 - e. Click **Next**.
8. To configure mailbox-level properties, click **Next**. Otherwise, click **Finish** to exit the Mailbox Creation Wizard and to return to the Mailbox Server Manager.

Notes:

- If you attempt to create a mailbox and the data store is missing, the system generates an error message box informing you that the mailbox cannot be created. Click **OK** to exit the message box and click **Cancel** to exit the Create Mailbox Wizard.
 - You must configure gateway mailbox properties before you can use this gateway. See Adding and Modifying Gateway Mailbox Properties for instructions.
9. Enter the transfer mode. Valid options are:
 - RFC
 - ALE
 10. If you are using ALE, enter the Logical System Name and the Sender Port in the appropriate boxes.
 11. If you are receiving SAP data, click **Edit Recipients**. Otherwise, continue with Step 20.

The system displays the Edit Recipients dialog box.

12. Select a recipient from the list or enter the name in the box.
You can also select a predefined distribution list. See the *IBM Sterling Gentran:Server for Microsoft Windows Communications User Guide* for information about how to create a Distribution List.
13. Click the appropriate routing option.
The system displays the Email Address dialog box.
14. To specify an Email Address, do the following. Otherwise, click **Cancel**.
 - a. Enter the Email Address.
 - b. Click **Add**.
 - c. Click **OK**.You return to the Edit Recipients dialog box. Repeat this step for all of your recipients.
15. Click **OK** to exit the Edit Recipients dialog box.
16. Select the process by which you want to start the SAP server.
17. Type the location of the SAP server or click **Browse** to navigate to the location.
18. To specify a time interval for which the system will check the SAP server connection, do the following. Otherwise, continue with step 20.
 - a. Click **Set timer for checking the connection**.
 - b. Enter a time interval in minutes and seconds.
19. To specify an error on which you want the system to generate an audit message, do the following:
 - a. Select **Audit message**.
 - b. In the On error box, type the error message number.
20. On the **Content Type** tab, do the following:
 - a. Select a Content Type of Attachments from SAP option.
 - b. Select a Content Type of Messages from SAP option.
21. If you selected the Map Content Type from Data for each Attachment option, continue with the Data Mapping section of the dialog box:
 - a. Select the check box in front of each data component that you want to map.
 - b. Type the appropriate mapping information.

Note: Record ID, Found In, and Map Pos. are required fields.
22. On the **Connection Parameters** tab, enter the appropriate connection parameters.
23. If you are using ALE, do the following:
 - a. Click the **ALE Properties** tab.
 - b. Configure the appropriate options.
 - c. Click **OK** to save all changes.See SAP Gateway Mailbox Properties - ALE Properties Tab for field descriptions.
24. You are using RFC, do the following:
 - a. Click the **RFC Properties** tab.
 - b. Configure the appropriate options.
 - c. Click **OK** to save all changes.

See SAP Gateway Mailbox Properties - RFC Properties Tab for field descriptions.

Modifying Gateway Mailbox Configuration Properties

About this task

Use this procedure to modify gateway mailbox properties.

Procedure

1. Start the Mailbox Server Manager.
 2. In the Mailboxes folder, right-click the appropriate mailbox and select **Properties**.
The system displays the Mailbox Configuration dialog box.
 3. To change any of the following, click the **General** tab:
 - name
 - description
 - mailbox alias
 - message life span
 - configuration properties
 4. To change the user security permissions, click the **Security** tab.
 5. To change the delivery rules, click the **Delivery Rules** tab.
 6. Make the appropriate modifications and click **OK**.
-

Adding and Modifying Gateway Mailbox Properties

About this task

Use this procedure to add or modify gateway mailbox properties.

Procedure

1. Start the Mailbox Server Manager.
2. In the Mailboxes folder, right-click the appropriate mailbox and select **Properties**.
The system displays the Mailbox Configuration dialog box.
3. Click **Configure**.
The system displays the properties for the selected mailbox.
4. If you configured properties as part of the mailbox creation properties, make the necessary modifications and click **OK**.
If did not configure properties as part of the mailbox creation process, continue with Step 9 of Creating SAP Gateway Mailboxes .

Notices

This information was developed for products and services offered in the U.S.A.

IBM may not offer the products, services, or features discussed in this document in other countries. Consult your local IBM representative for information on the products and services currently available in your area. Any reference to an IBM product, program, or service is not intended to state or imply that only that IBM product, program, or service may be used. Any functionally equivalent product, program, or service that does not infringe any IBM intellectual property right may be used instead. However, it is the user's responsibility to evaluate and verify the operation of any non-IBM product, program, or service.

IBM may have patents or pending patent applications covering subject matter described in this document. The furnishing of this document does not grant you any license to these patents. You can send license inquiries, in writing, to:

IBM Director of Licensing

IBM Corporation

North Castle Drive

Armonk, NY 10504-1785

U.S.A.

For license inquiries regarding double-byte character set (DBCS) information, contact the IBM Intellectual Property Department in your country or send inquiries, in writing, to:

Intellectual Property Licensing

Legal and Intellectual Property Law

IBM Japan Ltd.

19-21, Nihonbashi-Hakozakicho, Chuo-ku

Tokyo 103-8510, Japan

The following paragraph does not apply to the United Kingdom or any other country where such provisions are inconsistent with local law:

INTERNATIONAL BUSINESS MACHINES CORPORATION PROVIDES THIS PUBLICATION "AS IS" WITHOUT WARRANTY OF ANY KIND, EITHER EXPRESS OR IMPLIED, INCLUDING, BUT NOT LIMITED TO, THE IMPLIED WARRANTIES OF NON-INFRINGEMENT, MERCHANTABILITY OR FITNESS FOR A PARTICULAR PURPOSE. Some states do not allow disclaimer of express or implied warranties in certain transactions, therefore, this statement may not apply to you.

This information could include technical inaccuracies or typographical errors. Changes are periodically made to the information herein; these changes will be

incorporated in new editions of the publication. IBM may make improvements and/or changes in the product(s) and/or the program(s) described in this publication at any time without notice.

Any references in this information to non-IBM Web sites are provided for convenience only and do not in any manner serve as an endorsement of those Web sites. The materials at those Web sites are not part of the materials for this IBM product and use of those Web sites is at your own risk.

IBM may use or distribute any of the information you supply in any way it believes appropriate without incurring any obligation to you.

Licensees of this program who wish to have information about it for the purpose of enabling: (i) the exchange of information between independently created programs and other programs (including this one) and (ii) the mutual use of the information which has been exchanged, should contact:

IBM Corporation

J46A/G4

555 Bailey Avenue

San Jose, CA 95141-1003

U.S.A.

Such information may be available, subject to appropriate terms and conditions, including in some cases, payment of a fee.

The licensed program described in this document and all licensed material available for it are provided by IBM under terms of the IBM Customer Agreement, IBM International Program License Agreement or any equivalent agreement between us.

Any performance data contained herein was determined in a controlled environment. Therefore, the results obtained in other operating environments may vary significantly. Some measurements may have been made on development-level systems and there is no guarantee that these measurements will be the same on generally available systems. Furthermore, some measurements may have been estimated through extrapolation. Actual results may vary. Users of this document should verify the applicable data for their specific environment.

Information concerning non-IBM products was obtained from the suppliers of those products, their published announcements or other publicly available sources. IBM has not tested those products and cannot confirm the accuracy of performance, compatibility or any other claims related to non-IBM products. Questions on the capabilities of non-IBM products should be addressed to the suppliers of those products.

All statements regarding IBM's future direction or intent are subject to change or withdrawal without notice, and represent goals and objectives only.

All IBM prices shown are IBM's suggested retail prices, are current and are subject to change without notice. Dealer prices may vary.

This information is for planning purposes only. The information herein is subject to change before the products described become available.

This information contains examples of data and reports used in daily business operations. To illustrate them as completely as possible, the examples include the names of individuals, companies, brands, and products. All of these names are fictitious and any similarity to the names and addresses used by an actual business enterprise is entirely coincidental.

COPYRIGHT LICENSE:

This information contains sample application programs in source language, which illustrate programming techniques on various operating platforms. You may copy, modify, and distribute these sample programs in any form without payment to IBM, for the purposes of developing, using, marketing or distributing application programs conforming to the application programming interface for the operating platform for which the sample programs are written. These examples have not been thoroughly tested under all conditions. IBM, therefore, cannot guarantee or imply reliability, serviceability, or function of these programs. The sample programs are provided "AS IS", without warranty of any kind. IBM shall not be liable for any damages arising out of your use of the sample programs.

Each copy or any portion of these sample programs or any derivative work, must include a copyright notice as follows:

© IBM 2012. Portions of this code are derived from IBM Corp. Sample Programs. © Copyright IBM Corp. 2012.

If you are viewing this information softcopy, the photographs and color illustrations may not appear.

Trademarks

IBM, the IBM logo, and [ibm.com](http://www.ibm.com)[®] are trademarks or registered trademarks of International Business Machines Corp., registered in many jurisdictions worldwide. Other product and service names might be trademarks of IBM or other companies. A current list of IBM trademarks is available on the Web at "Copyright and trademark information" at <http://www.ibm.com/legal/copytrade.shtml>.

Adobe, the Adobe logo, PostScript, and the PostScript logo are either registered trademarks or trademarks of Adobe Systems Incorporated in the United States, and/or other countries.

IT Infrastructure Library is a registered trademark of the Central Computer and Telecommunications Agency which is now part of the Office of Government Commerce.

Intel, Intel logo, Intel Inside, Intel Inside logo, Intel Centrino, Intel Centrino logo, Celeron, Intel Xeon, Intel SpeedStep, Itanium, and Pentium are trademarks or registered trademarks of Intel Corporation or its subsidiaries in the United States and other countries.

Linux is a registered trademark of Linus Torvalds in the United States, other countries, or both.

Microsoft, Windows, Windows NT, and the Windows logo are trademarks of Microsoft Corporation in the United States, other countries, or both.

ITIL is a registered trademark, and a registered community trademark of the Office of Government Commerce, and is registered in the U.S. Patent and Trademark Office.

UNIX is a registered trademark of The Open Group in the United States and other countries.

Java™ and all Java-based trademarks and logos are trademarks or registered trademarks of Oracle and/or its affiliates.

Cell Broadband Engine is a trademark of Sony Computer Entertainment, Inc. in the United States, other countries, or both and is used under license therefrom.

Linear Tape-Open, LTO, the LTO Logo, Ultrium and the Ultrium Logo are trademarks of HP, IBM Corp. and Quantum in the U.S. and other countries.

Connect Control Center®, Connect:Direct®, Connect:Enterprise®, Gentran®, Gentran®:Basic®, Gentran:Control®, Gentran:Director®, Gentran:Plus®, Gentran:Realtime®, Gentran:Server®, Gentran:Viewpoint®, Sterling Commerce™, Sterling Information Broker®, and Sterling Integrator® are trademarks or registered trademarks of Sterling Commerce®, Inc., an IBM Company.

Other company, product, and service names may be trademarks or service marks of others.

Index

A

- adding mailbox properties 17
- ALE connection parameters 14
- ALE properties 7

C

- communications gateway 9, 10, 11, 12
- configuration overview 13
- configuring your SAP Gateway 13
- connection methods 1
- connection parameters 6, 14
- content types 5
- creating mailboxes 15

D

- data transfer methods 1
- delivery agents 11
- delivery rules
 - properties 11

E

- e-mail addresses
 - Gentran mailbox 9

G

- gateway configuration 13
- gateway mailboxes
 - adding properties 17
 - creating 15
 - modifying configuration properties 17
 - modifying properties 17
- gateway properties 2
- gateway types 10
- general gateway properties 3

M

- mailbox access 12
- mailbox properties
 - delivery rules 11
- Mailbox Properties dialog box
 - Addressing tab 9
 - Delivery Rules tab 11
 - Gateway tab 10
 - Security tab 12
- mailboxes
 - adding properties 17
 - creating 15
 - delivery rules 11
 - modifying configuration properties 17
 - modifying properties 17

- modifying mailbox configuration properties 17
- modifying mailbox properties 17

R

- RFC connection parameters 14
- RFC properties 8

S

- SAP Gateway overview 1
- SAP Gateway Properties
 - ALE Properties tab 7
 - Connection Parameters tab 6
 - Content Type tab 5
 - General Properties tab 3
 - RFC Properties tab 8
- SAP Gateway Properties dialog box 2
- SAP Server Monitor dialog box 3
- security access 12
- server monitor 3



Product Number: 5725-D09

Printed in USA