

IBM Sterling Gentrans:Server for Microsoft Windows

Sterling Gentrans Gateway Configuration Guide

Version 5.3



Copyright

This edition applies to the 5.3 Version of IBM® Sterling Gentran:Server® for Microsoft Windows and to all subsequent releases and modifications until otherwise indicated in new editions.

Before using this information and the product it supports, read the information in Notices on page N-1.

Licensed Materials - Property of IBM

IBM® Sterling Gentran:Server® for Microsoft Windows

© Copyright IBM Corp. 1996, 2011. All Rights Reserved.

US Government Users Restricted Rights - Use, duplication or disclosure restricted by GSA ADP Schedule Contract with IBM Corp.

Table of Contents

Preface	About This Guide	
Chapter 1	Sterling Gentran Gateway Overview	
Chapter 2	Configuring Communications	
	Properties	
	Procedures	
Appendix A	Error Messages	
Notices		

About This Guide

Contents	▶ Overviewvi
	▶ Description of Contents.vii
	▶ Getting Supportviii

Overview

Introduction

This document contains the tasks you must follow to create Sterling Gentran Gateway Mailboxes.

Intended audience

The intended audience for this document is:

- IBM® Sterling Gentran:Server® for Microsoft Windows system administrators
 - Sterling Gentran:Server users
-

Prerequisite knowledge

The audience using this software should be familiar with:

- your Microsoft Windows operating system
 - communications protocols
 - the Sterling Gentran:Server for Microsoft Windows software
-

Description of Contents

Introduction

This guide is organized into the tasks that you complete when configuring communications for the Sterling Gentran Gateway.

Organization of chapters

This guide is organized into chapters. A brief description of each chapter's contents follows.

- *About this Guide* explains the content and organization of this guide.
 - *Sterling Gentran Gateway Overview* provides a high-level overview of the Sterling Gentran Gateway.
 - *Configuring Communications* explains the process for configuring Sterling Gentran Gateway communications. This chapter also provides the procedures you must follow to configure your Sterling Gentran Gateway mailboxes.
 - *Error Messages* describes the gateway error messages and suggested user actions.
-

Getting Support

How To Get Help

IBM® Sterling Customer Center provides a wealth of online resources that are available around the clock to enrich your business experience with IBM® Sterling Gentran®. By using Sterling Customer Center, you gain access to many self-support tools, including a Knowledge-Base, Documentation, Education, and Case Management. Access this site at: Sterling Customer Center. (<http://customer.sterlingcommerce.com>)

Once logged in, select **Support Center** from the top navigation menu, and then locate Sterling Gentran product-specific support information from the left navigation menu.

Additionally, our Customer Support Reference Guide outlines our support hours, contact information, and key information that will enhance your support experience with us. For detailed information about Customer Support, please refer to the Customer Support Reference Guide accessible from the login page. (<http://customer.sterlingcommerce.com>)

Sterling Gentran Gateway Overview

Contents	▶ Overview	1 - 2
	▶ Sterling Gentran Gateway	1 - 3
	▶ Sterling Gentran Gateway Message Routing Scenarios.	1 - 4
	▶ Sterling Gentran Gateway Mailboxes	1 - 5

Overview

In this chapter

This chapter provides you with a high-level overview of the Sterling Gentran Gateway.

What is a gateway?

Gateways are software components that control the transmission of messages between two parties. The gateway is responsible for using the correct protocols to transfer messages between the sender and receiver.

You are responsible for defining the properties of the gateways that you use for transferring messages using the Mailbox Server Manager.

What is a mailbox?

Mailboxes store messages that are being transferred between mail recipients. Like a mailbox for paper mail, the messages are stored in the mailbox until they are transferred to the addressee.

There are two types of Sterling Gentran:Server mailboxes:

- non-gateway mailboxes
- gateway mailboxes

Non-gateway mailboxes

When you installed Sterling Gentran:Server, a default, non-gateway mailbox was created called the Gentran Application mailbox. This mailbox is used by Mailbox Server to hold messages that are being transferred between for Microsoft Windows and your Trading Partners.

Gateway mailboxes

You are responsible for creating gateway mailboxes. When you create gateway mailboxes you associate the mailbox with a gateway. The properties you define for each gateway mailbox determines how messages are transferred to your Trading Partners.

Sterling Gentran Gateway

Introduction

This section provides a high-level overview of the Sterling Gentran Gateway.

What is the Sterling Gentran Gateway?

The Sterling Gentran Gateway can handle communications between two Sterling Gentran:Server systems.

Sterling Gentran Gateway Message Routing Scenarios

Introduction

This section describes how messages are routed through the Sterling Gentran Gateway.

Sterling Gentran:Server to Sterling Gentran:Server message routing scenario

This table describes how messages are routed from one Sterling Gentran:Server system to another.

Stage	Description
1	Messages are sent from Sterling Gentran:Server to the OutBox of the Gentran Application mailbox.
2	Sterling Gentran:Server connects to the Sterling Gentran Gateway.
3	Sterling Gentran:Server creates the appropriate message attachments and e-mail properties.
4	Sterling Gentran:Server sends message attachments and E-mail properties to the appropriate Sterling Gentran:Server Outbox on another system using the Sterling Gentran Gateway.
5	Sterling Gentran:Server routes messages to predefined recipients.

Sterling Gentran Gateway Mailboxes

Introduction

All properties that apply to a specific mailbox are configured using mailbox properties.

Configuring the mailbox

When you configure a mailbox for use with the Sterling Gentran Gateway, you define the:

- Sending properties
- Receiving properties

Configuring Sending properties

When you configure mailbox Sending properties, you define:

- whether you want to send messages from this mailbox
- the name of the machine that you want to register
- the Sterling Gentran Gateway mailbox that you want to associate with the registered Mailbox Server Manager

Configuring Receiving properties

When you configure mailbox Receiving properties, you define:

- whether the mailbox can receive messages
 - whether you want to use the message recipient's E-mail address to further define how messages are routed
 - the message recipients
-

Configuring Communications

Contents	▶ Introduction	2 - 2
	Properties	2 - 3
	▶ Sterling Gentran Mailbox Properties	2 - 3
	▶ Mailbox Properties	2 - 6
	Procedures	2 - 11
	▶ Configuration process	2 - 11
	▶ How to Create Sterling Gentran Gateway Mailboxes	2 - 12
	▶ How to Modify Mailbox Properties	2 - 16

Introduction

In this chapter This chapter describes the tasks that you must complete to configure your Sterling Gentran Gateway and Sterling Gentran Gateway mailboxes.

Key Terms This table describes key terms used in this chapter.

Term	Description
Gateway	Software components that control the transmission of messages between two parties. The gateway is responsible for using the correct protocols to transfer messages between the sender and receiver.
Mailbox	A folder or set of folders used to store messages.
Sterling Gentran Gateway	A gateway that handles communication between two Sterling Gentran:Server systems.
Inbox	A Sterling Gentran:Server message queue that stores messages waiting to be processed by a gateway.
Mailbox Server Manager	A set or group of gateways, mailboxes, and distribution lists in a Sterling Gentran:Server system.
Outbox	A Sterling Gentran:Server message queue that stores messages waiting to be processed by the Mailbox Server Manager.
E-mail Address	A user-defined external reference that further defines recipient criteria in Sterling Gentran:Server.

Properties

Sterling Gentran Mailbox Properties

Introduction The Sending and Receiving tabs of the Gentran Mailbox Properties dialog box enables you to configure sending and receiving properties for this gateway.

Sending tab This illustration shows an example of the Sending tab of the Gentran Mailbox Properties dialog box.



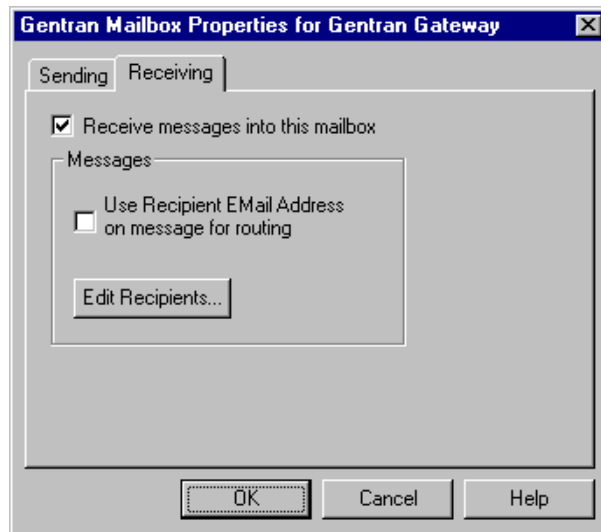
Parts and functions

This table describes the parts of the Sending tab of the Gentran Mailbox Properties dialog box and its function.

Part	Function
Send messages from this mailbox	Selection specifies that you want to send messages from this mailbox. A cleared check box indicates that you do not want to send messages from this mailbox or that you want to disable previously configured sending properties.
Enter the name of the Server to register	Specifies the name of the remote Sterling Gentran:Server machine to which you want to connect. Note A valid remote machine name entry populates the list as soon as you select another field in the dialog box. If there are no Sterling Gentran:Server mailboxes associated with the remote machine name, or if the machine name is invalid, the system displays a message prompt to that effect.
Enter or select an existing mailbox to register	Specifies valid Sterling Gentran:Server mailboxes associated with the remote machine. Note A valid remote machine name entry populates this list with associated Sterling Gentran:Server mailboxes.
OK	Saves changes; exits dialog box.
Cancel	Cancels unsaved changes; exits dialog box.
Help	Launches online Help system.

Receiving tab

This illustration shows an example of the Receiving tab of the Gentran Mailbox Properties dialog box.



Parts and functions

This table describes the parts of the Receiving tab of the Gentran Mailbox Properties dialog box and its function.

Part	Function
Receive Messages into this mailbox	Specifies that you want this mailbox to receive messages. A cleared check box indicates that you do not want to receive messages or that you want to disable previously configured receiving properties.
Messages	Specifies how you want to receive messages. Options are: <ul style="list-style-type: none"> • Use Recipient EMail Address on Message for Routing - specifies that you want to use recipient values defined by the sender. This value overrides recipient values defined on the Edit Recipients dialog box. • Edit Recipients - Accesses the Edit Recipients dialog box to enable you to select message recipients for messages received.
OK	Saves changes; exits dialog box.
Cancel	Cancels unsaved changes; exits dialog box.
Help	Launches online Help system.

Mailbox Properties

Introduction The Mailbox Properties dialog box defines the properties of the mailbox.

Addressing Tab This illustration shows an example of the Addressing tab of the Mailbox Properties dialog box.

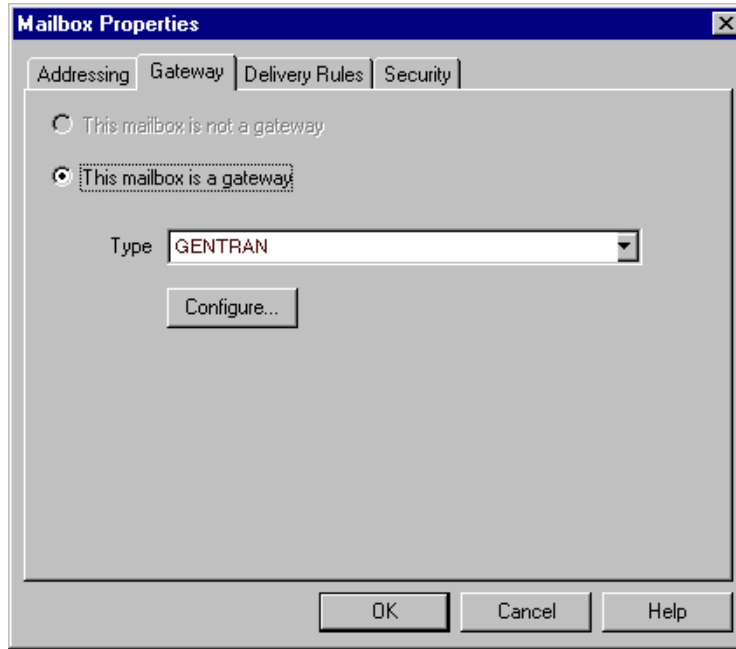


Parts and functions This table describes the parts of the Addressing tab of the Mailbox Properties dialog box and their functions.

Part	Function
Name	Defines the name of the mailbox.
Gentran e-mail address	Defines the Sterling Gentran e-mail address for messages sent from the mailbox.
OK	Saves changes; exits dialog.
Cancel	Closes dialog without saving changes.
Help	Enables access to online help.

Gateway Tab

This illustration shows an example of the Gateway tab of the Mailbox Properties dialog box.



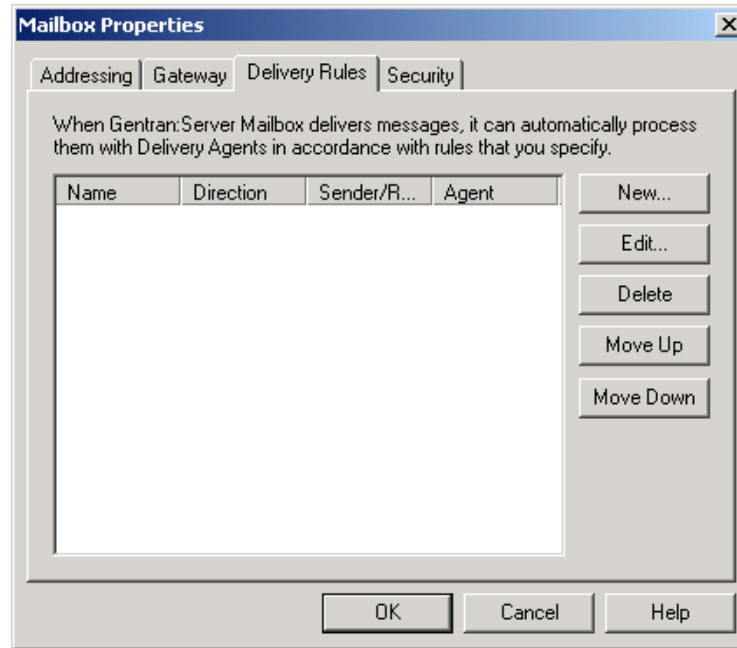
Parts and functions

This table describes the parts of the Gateway tab of the Mailbox Properties dialog box and their functions.

Part	Function
Gateway options	Specifies whether the mailbox is or is not a gateway. Options are: <ul style="list-style-type: none"> ▶ This mailbox is not a gateway ▶ This mailbox is a gateway
Type	Specifies type of gateway. Active when “This mailbox is a gateway” radio button is selected.
Configure	Enables you to configure properties for a selected gateway.
OK	Saves changes; exits dialog.
Cancel	Closes dialog without saving changes.
Help	Enables access to online help.

Delivery Rules Tab

This illustration shows an example of the Delivery Rules tab of the Mailbox Properties dialog box.



Parts and functions

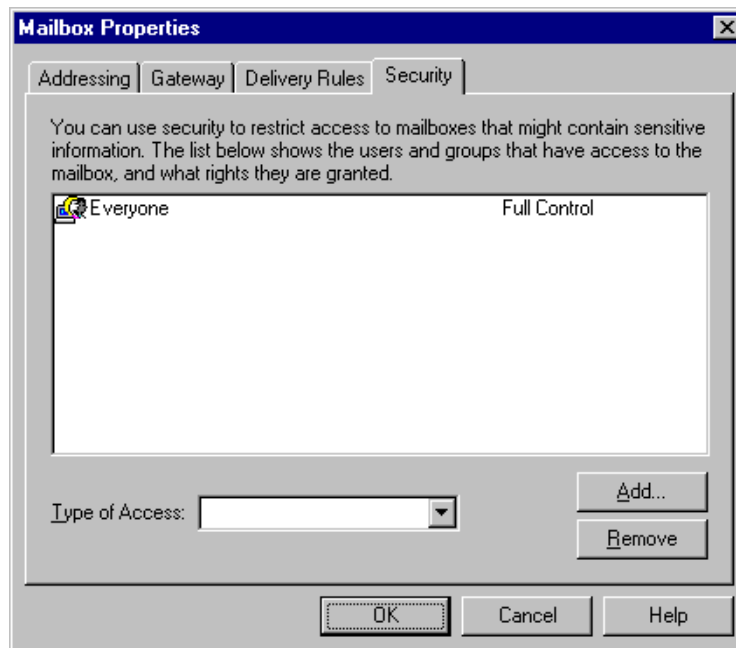
This table describes the parts of the Delivery Rules tab of the Mailbox Properties dialog box and their functions.

Part	Function
Name	Defines the name of the Delivery Rule.
Direction	Identifies if the rule is run when sending or receiving a message.
Sender/Recipient	Identifies the mailbox of the sender or recipient. The mail address can be specified in addition to the mailbox name.
Agent	Identifies the name of the delivery agent to be run.
New	Creates new Delivery Rules.
Edit	Edits existing Delivery Rules.
Delete	Deletes Delivery Rules.
Move Up	Moves the selected Delivery Rule up in the processing order.
Move Down	Moves the selected Delivery Rule down in the processing order.
OK	Saves changes; exits dialog.

Part	Function
Cancel	Closes dialog without saving changes.
Help	Enables access to online help.

Security Tab

This illustration shows an example of the Security tab of the Mailbox Properties dialog box.



Parts and functions

This table describes the parts of the Security tab of the Mailbox Properties dialog box and their functions.

Part	Function
User's list	Defines users and groups that have access to mailbox.
Type of Access	Designates level at which a user can interact with a mailbox. Values are: <ul style="list-style-type: none"> ▶ Full control ▶ Read ▶ Write
Add	Enables you to grant users or groups mailbox access.

(Contd) Part	Function
Remove	Enables you to take away user or group mailbox access.
OK	Saves changes; exits dialog.
Cancel	Closes dialog without saving changes.
Help	Enables access to online help.

Procedures

Configuration process

Sterling Gentran Gateway Configuration process

This table lists the stages in which you must configure communications for use with Sterling Gentran Gateway.

Stage	Description
1	Install and configure your Sterling Gentran:Server for Microsoft Windows software on the first system. Reference See the documentation that came with your Sterling Gentran:Server software for instructions.
2	Create the Sterling Gentran Gateway mailboxes that you intend to use. Reference See <i>How to Create Sterling Gentran Gateway Mailboxes</i> on page 2 - 12 for instructions.
3	Install and configure your Sterling Gentran:Server for Microsoft Windows software on the second system. Reference See the documentation that came with your Sterling Gentran:Server software for instructions.
4	Create the Sterling Gentran Gateway mailboxes that you intend to use. Reference See <i>How to Create Sterling Gentran Gateway Mailboxes</i> on page 2 - 12 for instructions.

How to Create Sterling Gentran Gateway Mailboxes

Introduction This section describes how to create Sterling Gentran Gateway mailboxes.

Procedure Use this procedure to create Sterling Gentran Gateway mailboxes.

Step	Action
1	Start the Mailbox Server Manager .
2	Select the Mailboxes folder icon.
3	Right-click and select Create from the short-cut menu. System Response The system displays the Create Mailbox Wizard dialog box.
4	Type the name and description of the mailbox you are creating and click Next twice. System Response The system displays a dialog asking whether you want to use the mailbox as a gateway to another messaging system.
5	Select Yes, use this mailbox as a gateway .
6	Select Gentran from the list. Click Next to advance the wizard. System Response The system displays the Create Mailbox Wizard - Summary dialog box.
7	Is the information that you entered correct? <ul style="list-style-type: none"> • If yes, click Finish. Continue with the next step. • If no, click the Back button to correct the information. Continue with the next step. System Response The system displays the Gentran Mailbox Properties dialog box. Note If you attempt to create a mailbox and the data store is missing, the system generates an error message box informing you that the mailbox cannot be created. Click OK to exit the message box and click Cancel to exit the Create Mailbox Wizard.

(Contd) Step	Action
8	Do you want to configure sending properties? <ul style="list-style-type: none"> • If yes, continue with the next step. • If no, continue with Step 12.
9	Do you want to send messages from this mailbox? <ul style="list-style-type: none"> • If yes, select the Send messages from this mailbox check box. • If no, verify that the Send messages from this mailbox check box is cleared. Continue with the next step.
10	Type the name of the remote Sterling Gentran:Server machine in the Enter the name of the Server to register box. Example GentranMachine1 is an example remote machine name.
11	Type or select a mailbox to register. WARNING The mailbox that you select must be defined and configured in Sterling Gentran:Server as a Sterling Gentran Gateway mailbox. Otherwise, the information that you send to the second Sterling Gentran:Server will not be properly received into that system.
12	Do you want to configure Receiving properties? <ul style="list-style-type: none"> • If yes, continue with the next step. • If no, click OK to save your changes and to exit the dialog box.
13	Select the Receiving tab.
14	Do you want this mailbox to receive messages? <ul style="list-style-type: none"> • If yes, select the Receive messages into this mailbox option. Continue with the next step. • If no, verify that the Receive messages into this mailbox check box is cleared. Continue with the next step.

(Contd) Step	Action
15	<p>Do you want to use the E-Mail Address value on messages received from Sterling Gentran:Server as the message recipient value?</p> <ul style="list-style-type: none"> ▶ If yes, select the Use Recipient E-Mail Address on message for routing option. Continue with the next step. <p>Note This selection overrides any values defined on the Edit Recipients dialog box.</p> <ul style="list-style-type: none"> ▶ If no, verify that the Use Recipient E-Mail Address on message for routing check box is cleared. Continue with the next step.
16	<p>Click Edit Recipients.</p> <p>System Response The system displays the Edit Recipients dialog box.</p>
17	<p>Select a recipient from the list or type the name in the box.</p> <p>Note You can also select a predefined distribution list.</p> <p>Reference See the <i>IBM® Sterling Gentran:Server® for Microsoft Windows Communications User Guide</i> for information on how to create a Distribution List.</p>
18	<p>Click the appropriate routing button. Valid options are:</p> <ul style="list-style-type: none"> ▶ To ▶ CC ▶ BCC <p>System Response The system displays the EMail Addresses dialog box.</p>
19	<p>Do you want to specify an e-mail value?</p> <ul style="list-style-type: none"> ▶ If yes, type the e-mail value in the box. Click Add. Click OK. ▶ If no, click Cancel. <p>System Response You return to the Edit Recipients dialog box.</p>
20	<p>Do you want to add more recipients?</p> <ul style="list-style-type: none"> ▶ If yes, repeat Steps 17 to 19. ▶ If no, continue with the next step.

(Contd) Step	Action
21	Click OK to return to the Receiving tab dialog box. Continue with the next step.
22	Click OK to save your changes and to exit the Receiving tab dialog box.

How to Modify Mailbox Properties

Introduction This section describes how to modify mailbox properties that were created using the Create Mailbox Wizard.

Procedure Use this procedure to modify mailbox properties.

Step	Action	
1	Start the Mailbox Server Manager .	
2	Expand the Mailboxes folder.	
3	Select the mailbox for which you want to add or modify properties.	
4	Right-click and select Properties from the short-cut menu. System Response The system displays the Mailbox Properties dialog box.	
5	Use this table to determine your next step.	
	IF you want to change the mailbox's...	THEN click this tab...
	<ul style="list-style-type: none"> ▶ name ▶ Gentran E-mail address 	Addressing
	<ul style="list-style-type: none"> ▶ Gateway properties ▶ Configuration properties 	Gateway
	delivery rules	Delivery Rules
	user security permissions	Security
6	Make the appropriate modifications and click OK to save changes and to exit the dialog box.	

Error Messages

Contents

- ▶ Overview A - 2
 - ▶ Sterling Gentran Gateway Messages. A - 3
-

Overview

In this appendix

This appendix describes the messages that this gateway generates. If you are working with the Communications subsystem through the Mailbox Server Manager, the user interface displays messages interactively.

Sterling Gentran Gateway Messages

Introduction This topic provides you with the error messages that the Sterling Gentran Gateway writes to the Audit Log.

Reference

See Configuring Communications, chapter 2 of this guide, for more information on Sterling Gentran Gateway procedures.

Messages This table describes the Sterling Gentran Gateway error messages.

Msg ID	Message Text	Explanation/Your Action
1003	The Gentran gateway failed to start.	<p>Explanation The Mailbox Service was not able to load the Gateway dll.</p> <p>Your Action Restart your services. If this does not correct the problem, check the audit log for service errors. If neither of these actions resolve the problem, reinstall the gateway from the Options CD.</p>
1005	The Gentran Gateway was not able to initialize its local connection to Gentran:Server.	<p>Explanation The gateway was not able to perform its initialization routine when the Mailbox Service was started.</p> <p>Your Action Restart the Mailbox Service. If this does not correct the problem, check the audit log for service errors. If neither of these actions, resolve the problem, reinstall the gateway from the Options Pack CD-ROM.</p>
1006	Unable to create message. The server returned error code [(error code number)].	<p>Explanation A message could not be created in the queue of the Server machine to which you are connecting.</p> <p>Your Action Verify that the Server to which you are connecting is running and has no system problems (i.e., the machine ran out of disk space, memory, etc.). Resend original message.</p>

(Contd) Msg ID	Message Text	Explanation/Your Action
1007	Unable to add a recipient (Name= [(recipient name)]) to the message. The server returned error code [(error code number)].	<p>Explanation A recipient is either invalid or has been deleted.</p> <p>Your Action Check the error code and take corrective action.</p>
1008	No recipients were successfully added to the message. The message cannot be processed.	<p>Explanation No valid recipients were added to the message. Consequently, the message can not be sent.</p> <p>Your Action Check the return code to determine why the system was unable to add a recipient and take the appropriate corrective action.</p>
1009	Unable to modify message content type. The server returned error code [(error code number)].	<p>Explanation The content type was not valid.</p> <p>Your Action Check the format of the content type and verify that it does not contain a forward slash (/) character. This character denotes a sub content type.</p>
1010	Unable to add an attachment [(attachment ID)] to the message. The server returned error code [(error code number)].	<p>Explanation The attachment could not be added to the message.</p> <p>Your Action Check the return code to determine the appropriate corrective action.</p>
1011	Error writing the file data into the attachment.	<p>Explanation The system could not write the file. This may be due to a disk full condition or hardware problems.</p> <p>Your Action Verify that your system has enough space and that the data store folder is not corrupted.</p>
1012	Unable to send the message (id= [(ID number)]). The server returned error code [(error code number)].	<p>Explanation The system was able to create the message and attachments and add recipients, but was unable to send the message.</p> <p>Your Action Check the return code to determine the appropriate corrective action.</p>

(Contd) Msg ID	Message Text	Explanation/Your Action
1014	Unable to open/create file [(file name)].	<p>Explanation The system was not able to open the store file.</p> <p>Your Action Validate the data store folder and verify that you have enough disk space.</p>
1015	Unable to get attachments from message (id= [(ID number)]).	<p>Explanation The system located a valid message, but was unable to read the attachment data. This may be caused by a corrupt disk or database.</p> <p>Your Action Check the data store file where the attachment data resides and verify that the database is not corrupt.</p>
1016	Unable to write the attachment data to the file.	<p>Explanation The system was not able to write the data for the attachment to disk. This could be caused by a corrupt disk or a bad database.</p> <p>Your Action Check the data store where the attachment data resides.</p>
1017	The Gentran Gateway was unable to read its settings. Default values will be used.	<p>Explanation The hidden message for the properties of the gateway were not able to be read.</p> <p>Your Action No action is needed if the default values are sufficient. If not, verify the properties by selecting them in the Mailbox Server client.</p>
1019	Unable to retrieve the local host name.	<p>Explanation The local host name specified in the properties was not accessible.</p> <p>Your Action Verify that the host being used is running and can be accessed by means of the network.</p>

(Contd) Msg ID	Message Text	Explanation/Your Action
1020	Unable to read remote properties for mailbox (Name= [(mailbox name)]).	<p>Explanation The local system was unable to read the properties of the remote mailbox. Either the mailbox did not exist or the properties were corrupt.</p> <p>Your Action Check the remote system that contains the mailbox to which you want to connect and retry.</p>
1021	Unable to write remote properties for mailbox (Name= [(mailbox name)]).	<p>Explanation The local system was unable to write to the properties of the remote mailbox. Either the mailbox did not exist or the properties were corrupt.</p> <p>Your Action Check the remote system that contains the mailbox to which you want to connect and retry.</p>
1022	Unable to open attachment.	<p>Explanation The system located a valid message but was unable to open the attachment data. This may be caused by a corrupt disk or database.</p> <p>Your Action Check the data store file where the attachment data resides and verify that the database is not corrupt.</p>

Notices

This information was developed for products and services offered in the U.S.A.

IBM may not offer the products, services, or features discussed in this document in other countries. Consult your local IBM representative for information on the products and services currently available in your area. Any reference to an IBM product, program, or service is not intended to state or imply that only that IBM product, program, or service may be used. Any functionally equivalent product, program, or service that does not infringe any IBM intellectual property right may be used instead. However, it is the user's responsibility to evaluate and verify the operation of any non-IBM product, program, or service.

IBM may have patents or pending patent applications covering subject matter described in this document. The furnishing of this document does not grant you any license to these patents. You can send license inquiries, in writing, to:

IBM Director of Licensing

IBM Corporation

North Castle Drive

Armonk, NY 10504-1785

U.S.A.

For license inquiries regarding double-byte character set (DBCS) information, contact the IBM Intellectual

Property Department in your country or send inquiries, in writing, to:

Intellectual Property Licensing

Legal and Intellectual Property Law

IBM Japan Ltd.

1623-14, Shimotsuruma, Yamato-shi

Kanagawa 242-8502 Japan

The following paragraph does not apply to the United Kingdom or any other country where such provisions are inconsistent with local law: INTERNATIONAL BUSINESS

MACHINES CORPORATION PROVIDES THIS PUBLICATION "AS IS" WITHOUT WARRANTY OF ANY KIND, EITHER EXPRESS OR IMPLIED, INCLUDING, BUT NOT LIMITED TO, THE IMPLIED WARRANTIES OF NON-INFRINGEMENT, MERCHANTABILITY OR FITNESS FOR A PARTICULAR PURPOSE. Some states do not allow disclaimer of express or implied warranties in certain transactions, therefore, this statement may not apply to you.

This information could include technical inaccuracies or typographical errors. Changes are periodically made to the information herein; these changes will be incorporated in new editions of the publication. IBM may make improvements and/or changes in the product(s) and/or the program(s) described in this publication at any time without notice.

Any references in this information to non-IBM Web sites are provided for convenience only and do not in any manner serve as an endorsement of those Web sites. The materials at those Web sites are not part of the materials for this IBM product and use of those Web sites is at your own risk.

IBM may use or distribute any of the information you supply in any way it believes appropriate without incurring any obligation to you.

Licensees of this program who wish to have information about it for the purpose of enabling: (i) the exchange of information between independently created programs and other programs (including this one) and (ii) the mutual use of the information which has been exchanged, should contact:

IBM Corporation

J46A/G4

555 Bailey Avenue

San Jose, CA_95141-1003

U.S.A.

Such information may be available, subject to appropriate terms and conditions, including in some cases, payment of a fee.

The licensed program described in this document and all licensed material available for it are provided by IBM under terms of the IBM Customer Agreement, IBM International Program License Agreement or any equivalent agreement between us.

Any performance data contained herein was determined in a controlled environment. Therefore, the results obtained in other operating environments may vary significantly. Some measurements may have been made on development-level systems and there is no guarantee that these measurements will be the same on generally available systems. Furthermore, some measurements may have been estimated through extrapolation. Actual results may vary. Users of this document should verify the applicable data for their specific environment.

Information concerning non-IBM products was obtained from the suppliers of those products, their published announcements or other publicly available sources. IBM has not tested those products and cannot confirm the accuracy of performance, compatibility or any other claims related to non-IBM products. Questions on the capabilities of non-IBM products should be addressed to the suppliers of those products.

All statements regarding IBM's future direction or intent are subject to change or withdrawal without notice, and represent goals and objectives only.

This information is for planning purposes only. The information herein is subject to change before the products described become available. This information contains examples of data and reports used in daily business operations. To illustrate them as completely as possible, the examples include the names of individuals, companies, brands, and products. All of these names are fictitious and any similarity to the names and addresses used by an actual business enterprise is entirely coincidental.

COPYRIGHT LICENSE:

This information contains sample application programs in source language, which illustrate programming techniques on various operating platforms. You may copy, modify, and distribute these sample programs in any form without payment to IBM, for the purposes of developing, using, marketing or distributing application programs conforming to the application programming interface for the operating platform for which the sample programs are written. These examples have not been thoroughly tested under all conditions. IBM, therefore, cannot guarantee or imply reliability, serviceability, or function of these programs. The sample programs are provided "AS IS", without warranty of any kind. IBM shall not be liable for any damages arising out of your use of the sample programs.

Each copy or any portion of these sample programs or any derivative work, must include a copyright notice as follows:

© IBM 2011. Portions of this code are derived from IBM Corp. Sample Programs.

© Copyright IBM Corp. 2011.

If you are viewing this information softcopy, the photographs and color illustrations may not appear.

Trademarks

IBM, the IBM logo, and ibm.com are trademarks or registered trademarks of International Business Machines Corp., registered in many jurisdictions worldwide. Other product and service names might be trademarks of IBM or other companies. A current list of IBM trademarks is available on the Web at "[Copyright and trademark information](http://www.ibm.com/legal/copytrade.shtml)" at www.ibm.com/legal/copytrade.shtml.

Adobe, the Adobe logo, PostScript, and the PostScript logo are either registered trademarks or trademarks of Adobe Systems Incorporated in the United States, and/or other countries.

IT Infrastructure Library is a registered trademark of the Central Computer and Telecommunications Agency which is now part of the Office of Government Commerce.

Intel, Intel logo, Intel Inside, Intel Inside logo, Intel Centrino, Intel Centrino logo, Celeron, Intel Xeon, Intel SpeedStep, Itanium, and Pentium are trademarks or registered trademarks of Intel Corporation or its subsidiaries in the United States and other countries.

Linux is a registered trademark of Linus Torvalds in the United States, other countries, or both.

Microsoft, Windows, Windows NT, and the Windows logo are trademarks of Microsoft Corporation in the United States, other countries, or both.

ITIL is a registered trademark, and a registered community trademark of the Office of Government Commerce, and is registered in the U.S. Patent and Trademark Office.

UNIX is a registered trademark of The Open Group in the United States and other countries.

Java and all Java-based trademarks and logos are trademarks or registered trademarks of Oracle and/or its affiliates.

Cell Broadband Engine is a trademark of Sony Computer Entertainment, Inc. in the United States, other countries, or both and is used under license therefrom.

Linear Tape-Open, LTO, the LTO Logo, Ultrium and the Ultrium Logo are trademarks of HP, IBM Corp. and Quantum in the U.S. and other countries.

Connect Control Center®, Connect:Direct®, Connect:Enterprise, Gentran®, Gentran:Basic®, Gentran:Control®, Gentran:Director®, Gentran:Plus®, Gentran:Realtime®, Gentran:Server®, Gentran:Viewpoint®, Sterling Commerce™, Sterling Information Broker®, and Sterling Integrator® are trademarks or registered trademarks of Sterling Commerce, Inc., an IBM Company.

Other company, product, and service names may be trademarks or service marks of others.
