

# **Gentran:Server<sup>®</sup> for Windows<sup>®</sup>**

## **Communications User's Guide**

Version 5.1

**Sterling Commerce**  
An IBM Company

## Copyright Notice

### **Gentran:Server for Windows**

© Copyright 1995–2005  
Sterling Commerce, Inc.  
ALL RIGHTS RESERVED

### **Sterling Commerce Software** Trade Secret Notice

**THE GENTRAN:SERVER FOR WINDOWS SOFTWARE ("STERLING COMMERCE SOFTWARE") IS THE CONFIDENTIAL AND TRADE SECRET PROPERTY OF STERLING COMMERCE, INC., ITS AFFILIATED COMPANIES OR ITS OR THEIR LICENSORS, AND IS PROVIDED UNDER THE TERMS OF A LICENSE AGREEMENT. NO DUPLICATION OR DISCLOSURE WITHOUT PRIOR WRITTEN PERMISSION. RESTRICTED RIGHTS.**

This documentation, the Sterling Commerce Software it describes, and the information and know-how they contain constitute the proprietary, confidential and valuable trade secret information of Sterling Commerce, Inc., its affiliated companies or its or their licensors, and may not be used for any unauthorized purpose, or disclosed to others without the prior written permission of the applicable Sterling Commerce entity. This documentation and the Sterling Commerce Software that it describes have been provided pursuant to a license agreement that contains prohibitions against and/or restrictions on their copying, modification and use. Duplication, in whole or in part, if and when permitted, shall bear this notice and the Sterling Commerce, Inc. copyright notice.

As and when provided to any governmental entity, government contractor or subcontractor subject to the FARs, this documentation is provided with RESTRICTED RIGHTS under Title 48 CFR 52.227-19. Further, as and when provided to any governmental entity, government contractor or subcontractor subject to DFARs, this documentation and the Sterling Commerce Software it describes are provided pursuant to the customary Sterling Commerce license, as described in Title 48 CFR 227-7202 with respect to commercial software and commercial software documentation.

These terms of use shall be governed by the laws of the State of Ohio, USA, without regard to its conflict of laws provisions. If you are accessing the Sterling Commerce Software under an executed agreement, then nothing in these terms and conditions supersedes or modifies the executed agreement.

Product names mentioned herein may be trademarks and/or registered trademarks of their respective companies. Gentran and Gentran:Server are registered trademarks of Sterling Commerce, Inc.

### **Third Party Software:**

Portions of the Sterling Commerce Software may include products, or may be distributed on the same storage media with products, ("Third Party Software") offered by third parties ("Third Party Licensors").

### **Warranty Disclaimer**

This documentation and the Sterling Commerce Software which it describes are licensed either "AS IS" or with a limited warranty, as set forth in the Sterling Commerce license agreement. Other than any limited warranties provided, NO OTHER WARRANTY IS EXPRESSED AND NONE SHALL BE IMPLIED, INCLUDING THE WARRANTIES OF MERCHANTABILITY AND FITNESS FOR USE OR FOR A PARTICULAR PURPOSE. The applicable Sterling Commerce entity reserves the right to revise this publication from time to time and to make changes in the content hereof without the obligation to notify any person or entity of such revisions or changes.

The Third Party Software is provided 'AS IS' WITHOUT ANY WARRANTY AND ANY EXPRESSED OR IMPLIED WARRANTIES, INCLUDING BUT NOT LIMITED TO, THE IMPLIED WARRANTIES OF MERCHANTABILITY, AND FITNESS FOR A PARTICULAR PURPOSE ARE DISCLAIMED. FURTHER, IF YOU ARE LOCATED OR ACCESSING THIS SOFTWARE IN THE UNITED STATES, ANY EXPRESS OR IMPLIED WARRANTY REGARDING TITLE OR NON-INFRINGEMENT ARE DISCLAIMED.

---

# Table of Contents

Preface	About This Guide	
	▶ Introduction .....	iv
	▶ Description of Contents .....	v
	▶ Online Help .....	vi
	▶ Getting Support .....	vii
<b>Chapter 1</b>	<b>Communications Overview</b>	
	▶ Overview .....	1-2
	▶ Messages .....	1-5
<b>Chapter 2</b>	<b>Configuring Communications</b>	
	<b>Overview .....</b>	<b>2-2</b>
	▶ Introduction .....	2-2
	▶ Mailbox Server Manager .....	2-3
	▶ File System Gateway Properties .....	2-6
	▶ File System Gateway Properties for File System Mailbox .....	2-7
	▶ Server Properties .....	2-13
	▶ Mailbox Properties .....	2-22
	▶ Import/Export Dialog Box .....	2-26
	<b>Mailbox Server Services .....</b>	<b>2-27</b>
	▶ How to Configure Services Dependencies .....	2-27
	▶ How to Start the Mailbox Service .....	2-29
	▶ How to Stop the Mailbox Service .....	2-30
	<b>Gateway Configuration Procedures .....</b>	<b>2-31</b>
	▶ Configuration Process .....	2-31
	▶ How to Configure Your File System Gateway .....	2-32
	▶ How to Create File System Mailboxes .....	2-33
	▶ How to Modify Mailbox Properties .....	2-37
	▶ How to Export a Mailbox .....	2-38
	▶ How to Import a Mailbox .....	2-39
<b>Chapter 3</b>	<b>Working with Lists</b>	
	▶ Overview .....	3-2
	▶ How to Create a Distribution List .....	3-3
	▶ How to Delete Distribution Lists .....	3-5
	▶ How to Create Recipient Lists .....	3-6

## Chapter 4 Working with Delivery Rules

<b>Overview</b> .....	<b>4-2</b>
▶ Introduction .....	4-2
▶ Delivery Rules .....	4-3
▶ Delivery Agents .....	4-6
<b>EXE Delivery Agent</b> .....	<b>4-7</b>
▶ Overview .....	4-7
▶ VATPRINT Utility .....	4-10
▶ XPROCESS Utility .....	4-12
<b>Xprocess DLL Agent</b> .....	<b>4-18</b>
▶ Overview .....	4-18
<b>Properties</b> .....	<b>4-24</b>
▶ Delivery Rules Properties .....	4-24
<b>Procedures</b> .....	<b>4-27</b>
▶ How to Use a Delivery Rule .....	4-27
▶ How to Set the Processing Order .....	4-30
▶ How to Edit a Delivery Rule .....	4-31
▶ How to Delete a Delivery Rule .....	4-32

## Chapter 5 Working With Messages

▶ Introduction .....	5-1
<b>Message Filtering</b> .....	<b>5-3</b>
▶ Overview .....	5-3
<b>Properties</b> .....	<b>5-4</b>
▶ System Browser Filter .....	5-4
▶ System Browser .....	5-6
▶ Filter Dialog Box .....	5-8
▶ Filter Browser .....	5-10
<b>Procedures</b> .....	<b>5-11</b>
▶ How to View Messages .....	5-11
▶ How to View Message Attachments .....	5-13
▶ How to Set Filter Properties for All Mailboxes .....	5-14
▶ How to Set Filter Properties for a Specific Mailbox .....	5-15
▶ How to Delete a Mailbox Message .....	5-16
▶ How to Restore Deleted Messages .....	5-17

## Chapter 6 Mailbox Server Messages

▶ Overview .....	6-2
▶ Error Message Handling .....	6-3
▶ Interactive Messages .....	6-4

## Glossary

# About This Guide

---

## Contents

▶ Introduction . . . . .	iv
▶ Description of Contents . . . . .	v
▶ Online Help . . . . .	vi
▶ Getting Support . . . . .	vii

---

# Introduction

---

**Overview**

This document contains the tasks you must follow to:

- set up communications between Gentran:Server for Windows<sup>®</sup> and your Trading Partners
- create mailboxes for your Trading Partners
- configure the Gentran:Server Communications and File System gateways

---

**Intended audience**

The intended audience for this document is the staff responsible for:

- setting up mailboxes and gateways for Gentran:Server
- administering Gentran:Server communications

---

**Prerequisite knowledge**

The audience using this software should be familiar with your Microsoft<sup>®</sup> operating system and with your communications protocols.

---

# Description of Contents

---

## Introduction

This guide is organized into the tasks that you complete when configuring communications for Gentran:Server.

---

## Organization of chapters

This guide is organized into chapters. A brief description of each chapter's contents follows.

- About This Guide explains the content and organization of this guide.
  - Communications Overview provides a high-level overview of the Gentran:Server for Windows communications subsystem. This chapter also introduces Value Added Networks (VANs) and describes some basic communications protocols.
  - Configuring Communications explains the process for configuring communications on Gentran:Server for Windows. This chapter also provides the procedures you must follow to configure your Gentran:Server File System Gateway and associated mailboxes.
  - Working with Lists describes the procedures for creating distribution lists and recipient lists.
  - Working with Delivery Rules describes the procedure for assigning delivery agents to mailboxes.
  - Working with Messages describes the Mailbox Server filter functionality, as well as how to perform common mailbox functions.
  - Mailbox Server Messages describes the interactive messages that you may receive while working with Mailbox Server communications.
  - Tracking Messages describes how to follow a message from Gentran:Server through Mailbox Server to your Trading Partner, and how to follow a message from your Trading Partner through Mailbox Server to Gentran:Server.
  - Glossary defines common Gentran:Server and Mailbox Server terminology.
-

# Online Help

---

## Introduction

The majority of this documentation is also contained in the online Help system. This includes dialog box element definitions, detailed processing information, and “how to” information that is contained in this manual.

---



# Getting Support

**Introduction** Sterling Commerce's Gentran:Server software is supported by trained product support personnel who are available to help you with product questions or concerns.

**Note**

Gentran:Server Customer Support does not support non-Sterling Commerce products (e.g., SQL Server, Oracle, etc.), but can assist you in configuring non-Sterling Commerce products to work with Gentran:Server.

**Phone number** For assistance, please refer to your *Getting Started Guide* to determine which support phone number you should use.

**Before calling support**

To help us provide prompt service, we ask that you do the following:

- Attempt to recreate any problem that you encounter and record the exact sequence of events.
- When you call product support, you should be prepared to provide us with the information below.

Information	Description
Identification	Your company name, your name, telephone number and extension, and the case number (if the question refers to a previously reported issue).
System Configuration	The Gentran:Server version (and any service packs installed) and information about the primary Gentran system controller and all machines experiencing problems, including: the Windows operating system version, amount of memory, available disk space, database version, Microsoft Data Access (MDAC) version, and Internet Explorer version.  Also, please describe any recent changes in your hardware, software, or the configuration of your system.
System Data Store	Which machines contain folders in the system data store?
Error Messages	Record the exact wording of any error messages you receive and the point in the software where the error occurred, as well as any log files.
Attempted Solutions	Record any steps that you took attempting to resolve the problem and note all the outcomes, and provide an estimate on how many times the problem occurred and whether it can be reproduced.

---

**Accessing the Sterling Commerce Support Web Site**

The Sterling Commerce Customer Support Web Site contains valuable information about getting support for Gentran:Server for Windows, including the:

- scope of support services
- customer support policies
- call prioritizing
- customer support phone directory
- how to create new Support on Demand cases
- how to check the status of Support on Demand cases
- how to add information to Support on Demand cases

The Customer Support Web Site is constantly updated and all Sterling Commerce customers have access to it. This web site also contains the most recent product updates and is a valuable source of product information.

**Reference**

Refer to the *Getting Started Guide* for information on how to access the Customer Support World Wide Web Site.

---

**Documentation**

The Customer Support Web Site contains a documentation library, which has the entire Gentran:Server for Windows documentation set. You can download the product manuals in PDF format from this library at any time.

---

---

# Communications Overview

---

## Contents

- ▶ Overview ..... 1 - 2
  - ▶ Messages ..... 1 - 5
- 



# Overview

---

**In this chapter**

This chapter provides you with a high-level overview of the components of the Mailbox Server system.

---

**What is the Mailbox Server system?**

The Mailbox Server system is the communications system used to transfer messages between you and your Trading Partners. This system allows you to transfer messages using a variety of communications protocols.

---

**Mailbox Server components**

The Mailbox Server system has the following components:

- mailboxes
  - distribution lists
  - delivery agents
  - gateways
- 

**Mailboxes**

Mailboxes store messages that are being transferred between mail recipients. Like a mailbox for paper mail, the messages are stored in the mailbox until they are transferred to the addressee.

Mailbox Server features two types of mailboxes:

- non-gateway mailboxes
- gateway mailboxes

**Non-gateway mailboxes**

When you installed Gentran:Server, a default, non-gateway mailbox was created called the Gentran Application mailbox. This mailbox is used by Mailbox Server to hold messages that are being transferred between Gentran:Server for Windows and your Trading Partners.

**Gateway mailboxes**

You are responsible for creating gateway mailboxes. When you create gateway mailboxes you associate the mailbox with a gateway. The properties you define for each gateway mailbox determines how messages are transferred to your Trading Partners.

---

---

**Content type and subtype**

The content type and subtype values are used to indicate the Internet media type of the information being transmitted. The content type determines the mechanism to use to display the data.

You determine which action the system performs on each type of data by the values selected on the Mailbox tab of the System Configuration dialog box.

**Example**

Application/EDI is an application program type with a subtype of EDI (representing Electronic Data Interchange data). When Gentran:Server receives a message with an Application/EDI content type and subtype, it runs the GDW\_Process\_MBFile command on the message.

**Note**

Messages containing undefined content types remain in the Gentran Application mailbox until the content type has been defined.

**Reference**

See the “Gentran:Server Administration Guide” for information on the Mailbox tab of the System Configuration dialog box.

---

**Acceptable content types**

Gentran:Server accepts, by default, the following content type / subtype combinations:

- Application/EDI
  - Application/Import
  - Application/Document-EDI
- 

**Distribution lists**

A distribution list is a list of Mailbox Server mailboxes. Instead of addressing messages to each individual, you can group the individual mailboxes into a distribution list. When you configure a gateway mailbox, you may define the distribution list as the recipient.

**Example**

You might configure a gateway mailbox to send messages to a mailing list called “EDI Administrators.” This distribution list includes the individual mailboxes of all EDI Administrators in your company.

---

**Delivery agents**

A delivery agent runs external programs on the messages you send and receive. When you installed Mailbox Server, the delivery agents “EXE agent” and “Xprocess DLL Agent” were installed for you.

**Example**

You may want to run the Xprocess utility on a message you receive from Trading Partner TREX. You would define the delivery rules properties to run Xprocess whenever Mailbox Server transfers a message from the TREX mailbox to the Gentran Application Mailbox.

**Reference**

See *Working with Delivery Rules*, chapter 4 of this guide, for more information about how to define and how to configure delivery rules.

---

---

## Gateways

Gateways are software components that control the transmission of messages between two parties. The gateway is responsible for using the correct protocols to transfer messages between the sender and receiver. In a paper mail system, the gateway is the letter carrier who moves letters from senders to receivers. The letter carrier ensures that each letter has an address and proper postage before delivering the letter. The letter carrier also transfers the letter using the correct protocol: priority mail, first class, or bulk mail.

You are responsible for defining the properties of the gateways that you use for transferring messages.

### **File System gateway**

The File System Gateway is created when you install Gentran:Server. This gateway moves messages to a specified folder on your file system, thereby allowing you to use another communications system to transfer your messages. You can also use the File System gateway to test Gentran:Server to ensure that it is processing messages correctly.

### **Optional gateways**

In addition to the File System Gateway, Gentran:Server features a variety of optional gateways. An optional gateway is installed separately from the Gentran:Server installation and is supplemented with its own configuration guide.

---

# Messages

---

**Introduction**

The purpose of the Mailbox Server system is to transfer messages. This topic describes messages and message attachments.

---

**What is a message?**

A message is a general term for a piece of information, such as an e-mail message, voice mail, or a simple text message. Messages that are transferred within Mailbox Server are specific types of messages that typically contain the data contained in your business documents. Each message has the following properties:

- Message ID—uniquely identifies each message.
  - Src ID - Lists the message ID assigned in the mailbox that sent the message.
  - Subject—provides an introduction into the content of the message.
  - Content type and subtype—describes the type of information contained in the message or attachment.
  - From—describes the author.
  - Recipient—describes the recipient.
  - Status—shows how far the message and attachment have progressed through Mailbox Server.
  - Message body—contains the main content of the message, typically displayed in a plain text format.
  - Attachment—contains additional text or binary data elements (such as the data in your business documents).
- 

**What is an attachment?**

An Attachment, from Mailbox Server's perspective, is the business document that you exchange with your Trading Partners. This document may contain the Electronic Data Interchange (EDI) information that is generated from your business systems. Mailbox Server stores this information as an attachment to the message.

---

**Where are messages stored?**

Messages in Mailbox Server are stored in the mailbox. These messages contain the addressing information (the message ID, recipient, sender, subject, and content type). Each message is assigned a unique identification number. In addition, messages contain a pointer to the location of the attachment.

---

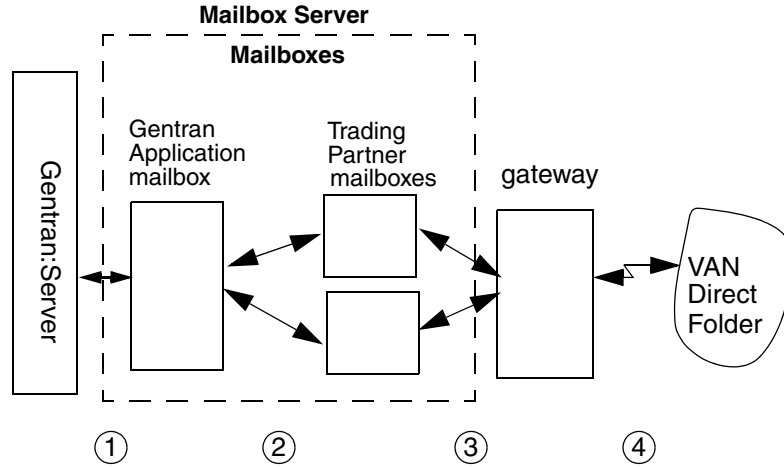
**Where are attachments stored?**

The default directory where attachments are stored is gensrvnt\store. Each attachment is assigned a unique identification number.

---

**Message flow**

This illustration shows a high-level overview of the flow of messages through Mailbox Server. The numbers in this illustration correspond to the *Message flow description* on page 1 - 6 table.



**Message flow description**

This table describes the flow of messages through Gentran:Server. The stages listed on this table correspond to the numbers represented in the above illustration.

Stage	Description
1	All messages going to and from Gentran:Server are stored in the Gentran Application mailbox.
2	Messages are transferred between the Gentran Application mailbox and the Trading Partner mailboxes that you have created on Mailbox Server.
3	The properties you define for each Trading Partner mailbox determines how your messages are transferred to your Trading Partners.
4	The gateways control the actual communications with your VAN, your Trading Partner's computers, or the folders on your file system.

**Outbound Message Flow**

This table describes the flow of documents from Gentran:Server to a Trading Partner.

Stage	Description
1	Business documents are processed on Gentran:Server. The documents are placed in the Out Documents folder and grouped into interchanges. The interchanges are attached to mail messages that are created in the Out Box of the Gentran Application mailbox.
2	Gentran:Server delivers the message to the Trading Partner's In Box. <i>(Continued on next page)</i>



3	The communication subsystem transfers the message through the gateway that is associated with the Trading Partner’s mailbox to the VAN or Trading Partner, or to a designated folder.
4	The Mailbox Server marks the message in the Trading Partner’s mailbox as sent.
5	Gentran:Server is notified of success or failure of the transmission.

**Inbound Message Flow**

This table describes the inbound flow of documents through Gentran:Server and the Communications subsystem.

Stage	Description
1	Your Trading Partner makes a message available for receipt. <b>Example</b> Your Trading Partner stores a message in a mailbox on a VAN.
2	<ul style="list-style-type: none"> <li>▶ If your Trading Partner is communicating to you through a VAN or through a direct connection, then the communications subsystem establishes a connection to the remote system, retrieves the message, and deposits it into the Trading Partner’s Out Box on Gentran:Server.</li> <li>▶ If your Trading Partner is communicating to you through a third party communications software, then the communications subsystem collects the files from a designated folder and deposits in the Trading Partner’s Out Box.</li> </ul>
3	Gentran:Server routes the file from the Trading Partner’s Out Box to the Gentran Application In Box.
4	Gentran:Server retrieves the document from the In Box of the Gentran Application mailbox and deposits it into the In Documents folder.

**Where to look for more information**

See *Tracking Messages*, chapter 7 of this guide, for more information on how messages and attachments are processed through Mailbox Server.



---

# Configuring Communications

---

<b>Contents</b>	<b>Overview</b> .....	<b>2 - 2</b>
	▶ Introduction.....	2 - 2
	▶ Mailbox Server Manager.....	2 - 3
	▶ File System Gateway Properties.....	2 - 6
	▶ File System Gateway Properties for File System Mailbox.....	2 - 7
	▶ Server Properties.....	2 - 13
	▶ Mailbox Properties.....	2 - 22
	▶ Import/Export Dialog Box.....	2 - 26
	<b>Mailbox Server Services</b> .....	<b>2 - 27</b>
	▶ How to Configure Services Dependencies.....	2 - 27
	▶ How to Start the Mailbox Service.....	2 - 29
	▶ How to Stop the Mailbox Service.....	2 - 30
	<b>Gateway Configuration Procedures</b> .....	<b>2 - 31</b>
	▶ Configuration Process.....	2 - 31
	▶ How to Configure Your File System Gateway.....	2 - 32
	▶ How to Create File System Mailboxes.....	2 - 33
	▶ How to Modify Mailbox Properties.....	2 - 37
	▶ How to Export a Mailbox.....	2 - 38
	▶ How to Import a Mailbox.....	2 - 39

---

# Overview

## Introduction

---

**In this chapter** This chapter describes the tasks you complete to configure your File System Gateway communications.

---

**Key terms** This table lists the key terms used in this chapter.

<b>Term</b>	<b>Description</b>
communications controller	A computer that controls communications sessions.
file system gateway	Software that enables messages to be routed to or from designated folders on your file system.
mailbox	A folder or set of folders used to store messages.

---

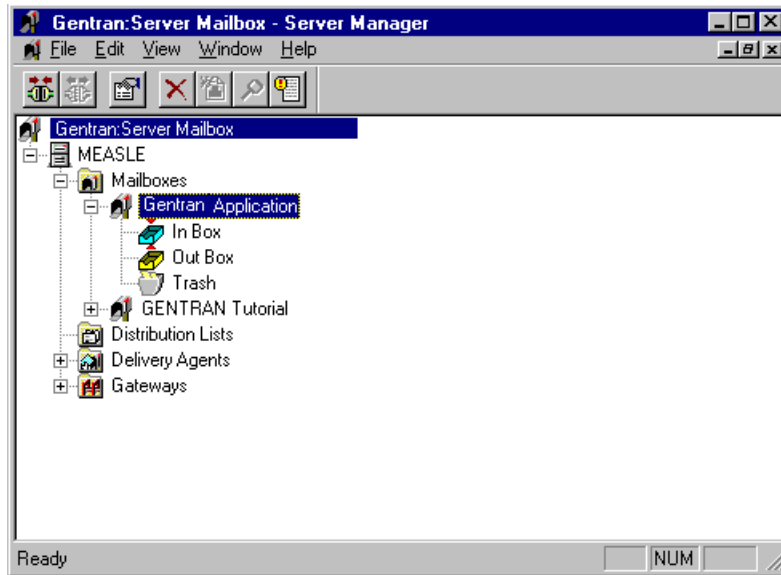
# Mailbox Server Manager

## Introduction

Your day-to-day activities in administering and maintaining the Mailbox Server are accomplished using the Mailbox Server Manager. This tool allows you to add and remove Mailbox components such as mailbox servers, mailboxes, and gateways.





## Mailbox Server Manager

This illustration shows the Mailbox Server Manager.










## Parts and functions

This table describes the parts of the Mailbox Server Manager and their functions.





Part	Function
	Identifies a Mailbox Server. The Mailbox Server is a container that holds mailboxes, distribution lists, delivery agents, and gateways.
	Identifies the Mailbox folder for the server. The Mailbox folder contains all of the mailboxes you have defined for use with Gentran:Server.
	Identifies a Mailbox. Each mailbox has three elements: an In Box, an Out Box, and a Trash container. These elements are created automatically when you create a new mailbox.
	Identifies an In Box.

(Continued on next page)




(Contd) Part	Function
	Identifies an Out Box.
	Identifies a Trash container.
	Identifies the Distribution list folder for the server.
	Identifies the Delivery agent folder for the server.
	Identifies available delivery agents.
	Identifies the gateway folder for the server. A gateway folder contains communications gateways.
	Identifies a gateway. You use gateways to send and receive messages.

### Mailbox toolbar

This table list the icons found on the Mailbox toolbar and descriptions of each icon.

Icon	Description
	Registers a Mailbox Server.
	Unregisters a Mailbox Server
	Edits the properties of the selected item.
	Deletes the selected item.

(Continued on next page)

<b>(Contd) Icon</b>	<b>Description</b>
	Creates an item.
	Launches the Filter tool.
	Launches the Gentran Audit Log.

### **Right mouse button**

You can click the right mouse button (right-click) to display a shortcut menu to use with the Mailbox Server Manager. The shortcut menu that appears is dependent upon the item that you selected.

### **Browser Refresh**

The browser Refresh function enables you to repaint the information reflected in an active browser. To refresh a browser's display do either one of the following:

- press **F5**
- from the Mailbox Server Manager View menu, select **Refresh**

### **Creating Mailboxes Using Mailbox Server Manager**

Mailbox Server's Create Mailbox Wizard enables you to create mailboxes for your gateways. Using the Create Mailbox Wizard, you configure the following properties:

- trading partner's mailbox name
- Gentran e-mail address for your mailbox
- whether you want to use the mailbox as a gateway

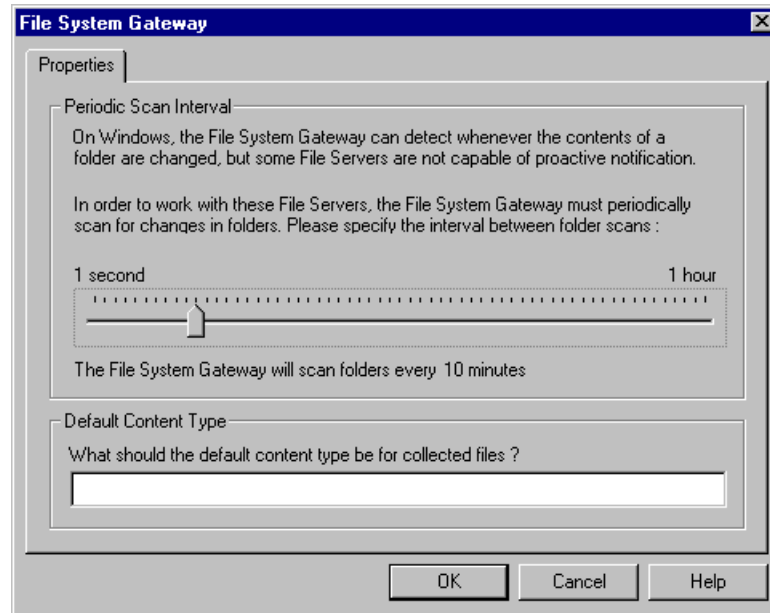
# File System Gateway Properties

## Introduction

The File System Gateway dialog box is used to define the properties for storing or retrieving messages from a folder on your hard drive.

## Gateway Properties

This illustration shows an example of the File System Gateway properties dialog box.



## Parts and functions

This table describes the parts of the File System Gateway Properties dialog box and their functions.

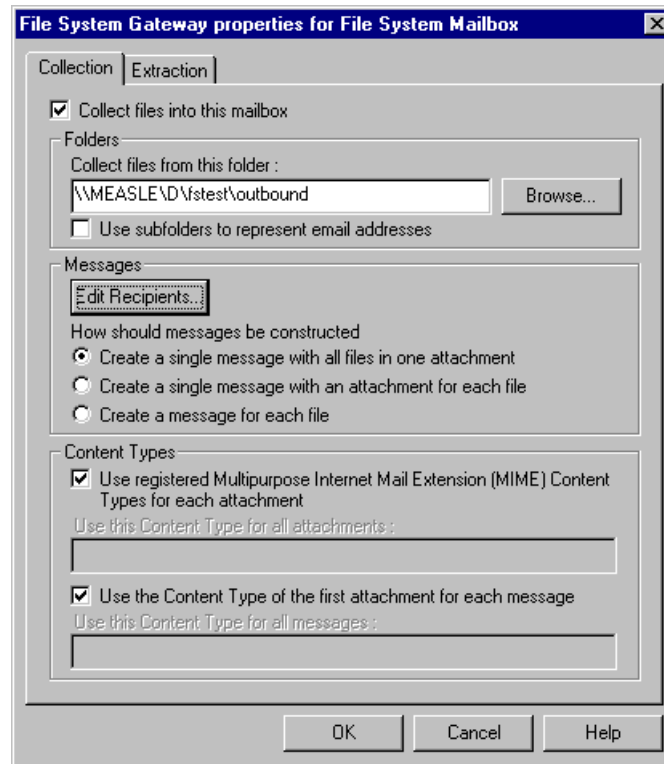
Part	Function
Periodic Scan Interval	Defines the interval by which the File System Gateway scans folders.
Default Content Type	Defines the default MIME content type and subtype used for all files collected using this File System gateway.
<b>OK</b>	Saves changes to this dialog box.
<b>Cancel</b>	Cancels changes to this dialog box.



# File System Gateway Properties for File System Mailbox

**Introduction** This section describes the Collection and Extraction tabs of the File System Gateway dialog box. These tabs are used to configure mailbox-level properties for the File System Gateway.

**Collection tab** This illustration shows the Collection tab.



**Parts and functions** This table describes the parts of the Collection tab and their functions.

Part	Function
Collect files into this mailbox	Enables the gateway to collect files from the file system folder and direct them to this mailbox.
Collect files from this folder	Defines the folder from which the gateway pulls files.
Use subfolders to represent e-mail addresses	Causes the File System Gateway to write extracted files to a subfolder of the folder specified in the previous box. The subfolder has the mailbox's e-mail address.

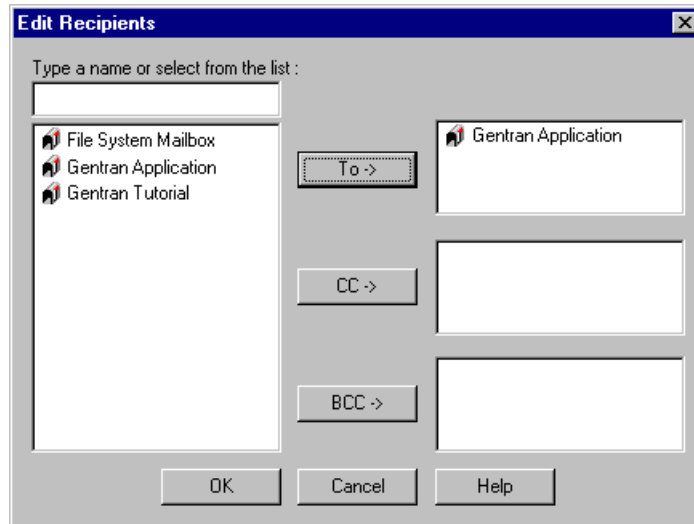
(Continued on next page)



<b>(Contd) Part</b>	<b>Function</b>
<b>Edit Recipients</b>	Displays the Edit Recipients dialog box.
Create a single message with all files in one attachment	Puts all the files into one attachment and generates one message.
Create a single message with an attachment for each file	Makes each file a separate attachment, but generates one message.
Create a message for each file	Creates one message and one attachment for each file.
Use Registered Multipurpose Internet Mail Extension (MIME) Content Types for each attachment	Derives the content type for attachments from the registered MIME type for the file extension. If the file extension is not a registered MIME type, the system uses “Application” as the content type and the file extension as the content subtype.
Use this Content Type for all attachments	Uses the specified content type for every attachment.
Use the Content Type of the first attachment for each message	Uses the extension of the first file name collected into the current message.
Use this Content Type for all messages	Uses the specified content type for every message.
<b>OK</b>	Saves changes to this dialog box.
<b>Cancel</b>	Cancels changes to this dialog box.
<b>Help</b>	Displays online Help for this dialog box.

**Edit Recipients dialog box**

This illustration shows the Edit Recipients dialog box.



**Parts and functions**

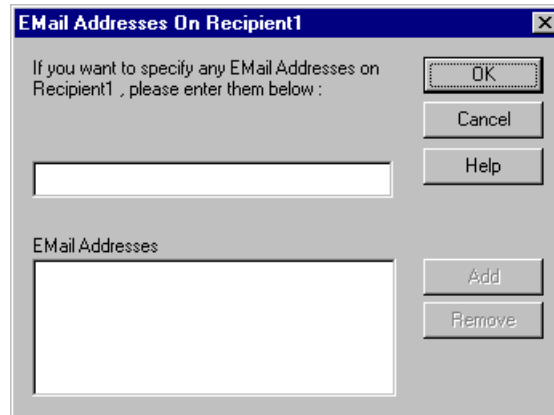
This table describes the parts of the Edit Recipients dialog box and their functions.

Part	Function
Type a name or select from the list	Enables you to specify a message recipient.
<b>To</b>	Routes messages to the specified recipient.
<b>CC</b>	Routes a carbon copy of the message to the specified recipient.
<b>BCC</b>	Routes a blind carbon copy to the specified recipients.
<b>OK</b>	Saves changes to this dialog box.
<b>Cancel</b>	Cancels changes to this dialog box.
<b>Help</b>	Displays online Help for this dialog box.



## E-mail Addresses dialog box

This illustration shows the E-mail Addresses dialog box.



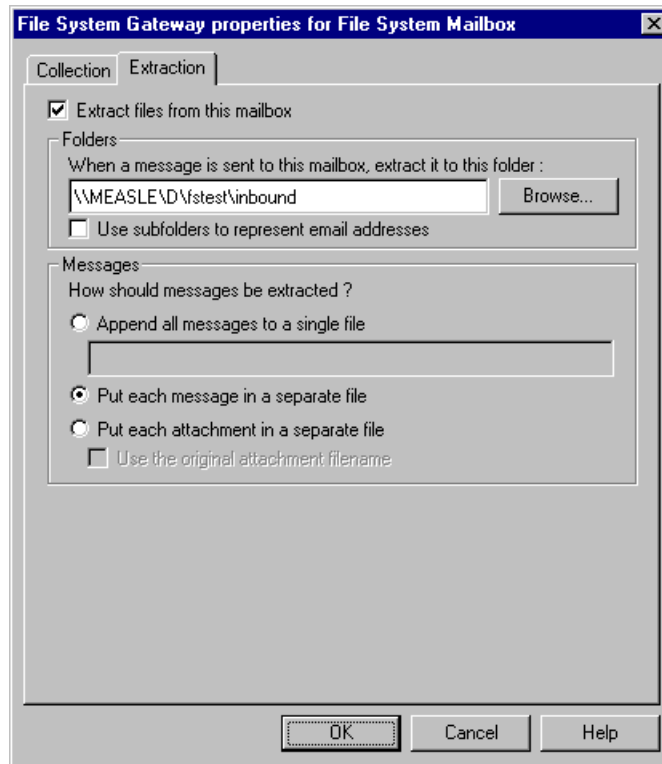
## Parts and functions

This table describes the parts of the E-mail Addresses dialog box and their functions.

Part	Function
If you want to specify any EMail addresses, please enter them below	Specifies an e-mail address that you want to associate with a recipient.
Email Addresses list	This list contains all the mail addresses on the VAN or Trading Partner's computer who will receive messages.
<b>OK</b>	Saves changes to this dialog box.
<b>Cancel</b>	Cancels changes to this dialog box.
<b>Help</b>	Displays online Help for this dialog box.
<b>Add</b>	Adds the specified e-mail address to a recipient's system routing information.
<b>Remove</b>	Removes a specified e-mail address.

**The Extraction tab**

This illustration shows the Extraction tab of the File System Gateway Properties dialog box.



**Parts and functions**

This table describes the parts of the Extraction tab and their functions.

Part	Function
Extract files from this mailbox	Enables the File System Gateway to extract files from the File System Gateway mailbox.
When a message is sent to this mailbox, extract it to this folder	Defines the folder to which the File System Gateway adds messages sent to this mailbox.
<b>Browse</b>	Enables you to browse through drives, directories, and folders to locate the extraction folder.
Use subfolders to represent e-mail addresses	Causes the File System Gateway to write extracted files to a subfolder of the folder specified in the previous box. The subfolder has the same name as the mailbox.
Append all messages to a single file	Puts all attachments from all messages delivered to this mailbox in one file.

(Continued on next page)



<b>(Contd) Part</b>	<b>Function</b>
Put each message in a separate file	Puts all attachments to a message in one file, which is named for the message.
Put each attachment in a separate file	Puts each attachment in its own file.
Use the original attachment filename	If each attachment is put in its own file, this option uses the original file name of the attachment for the file name.  If this option is not selected, the system assigns a generic, incremental name to each attachment.  <b>Example</b> Att1, Att2, Att3, etc.
<b>OK</b>	Saves changes to this dialog box.
<b>Cancel</b>	Cancels changes to this dialog box.
<b>Help</b>	Displays online Help for this dialog box.

---

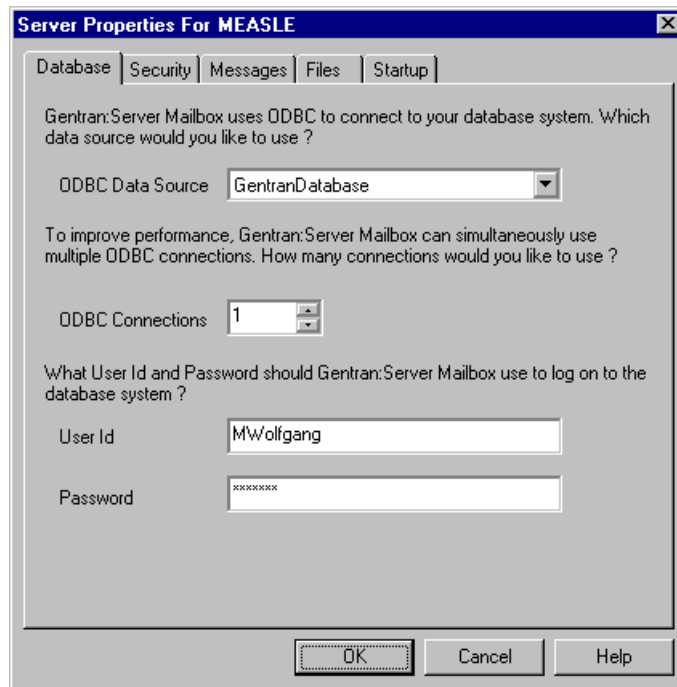
# Server Properties

**Introduction** The Server Properties dialog box enables you to define the properties of the mailbox server.

**How to access** Right-click the server name (first node under Gentran:Server Mailbox root in the tree list in Mailbox Server) and select **Properties**. The system displays the Server Properties dialog box.

**Note** If you are not connected to the mailbox server, the Security tab will not display. To connect to the server, expand the tree list under the server name.

**Database Tab** This illustration shows an example of the Database tab of the Server Properties dialog box.



**Database tab parts and functions**

This table describes the parts of the Database tab of the Server Properties dialog box and their functions.

Part	Function
ODBC data source	Lists the available ODBC data sources. <span style="color: green;">(Continued on next page)</span>



Part	Function
ODBC Connections	<p>Specifies the number of ODBC connections.</p> <p><b>Note</b> The message thread count and ODBC connection counts should be set to the same number. Both the ODBC and thread connections depend on the number of processors. We do not recommend that you increase these values beyond the number of processors on the machine, because doing so can cause resource contention issues.</p> <p>For example, on a dual processor machine you would set the Mailbox ODBC connections to “2” and the Message threads to “2.” Therefore, each message thread has an individual ODBC connection that can be used to connect to the database for simultaneous processing, without having to be queued.</p> <p><b>References</b></p> <ul style="list-style-type: none"> <li>• See <i>Messages tab parts and functions</i> on page 2 - 17 for more information about specifying the number of message threads.</li> <li>• See your Microsoft documentation for more information on Microsoft threading policies.</li> </ul>
User ID	<p>Specifies your database user ID.</p> <p><b>Example</b> sa</p>
Password	<p>Specifies your database password.</p> <p><b>Note</b> Leave this box blank if there is no password for the database user ID.</p>
<b>OK</b>	Saves changes; exits the dialog box
<b>Cancel</b>	Closes the dialog box without saving changes.
<b>Help</b>	Enables access to online Help.



**Security Tab**

This illustration shows an example of the Security tab of the Server Properties dialog box.

**Note**

If you are not connected to the mailbox server, the Security tab will not display. To connect to the server, expand the tree list under the server name.



**Security tab parts and functions**

This table describes the parts of the Security tab of the Server Properties dialog box and their functions.

Part	Function
<b>Edit System Security</b>	Displays the System Security dialog box to alter the Mailbox system security options.
<b>Edit New Mailbox Security</b>	Displays the New Mailbox Security dialog box, which enables you to define the security options for new mailboxes.
<b>OK</b>	Saves changes; exits the dialog box
<b>Cancel</b>	Closes the dialog box without saving changes.
<b>Help</b>	Enables access to online Help.



**Messages Tab**

This illustration shows an example of the Messages tab of the Server Properties dialog box.

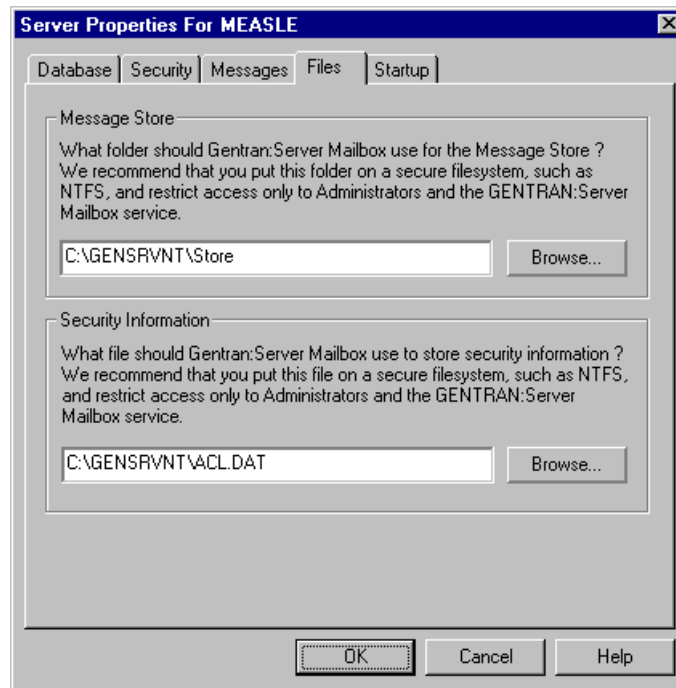


### Messages tab parts and functions

This table describes the parts of the Messages tab of the Server Properties dialog box and their functions.

Part	Function
How many threads would you like to use?	<p>Specifies the number of spooler threads you want to use.</p> <p><b>Note</b> The message thread count and ODBC connection counts should be set to the same number. Both the ODBC and thread connections depend on the number of processors. We do not recommend that you increase these values beyond the number of processors on the machine, because doing so can cause resource contention issues.</p> <p>For example, on a dual processor machine you would set the Mailbox ODBC connections to “2” and the Message threads to “2.” Therefore, each message thread has an individual ODBC connection that can be used to connect to the database for simultaneous processing, without having to be queued.</p> <p><b>References</b></p> <ul style="list-style-type: none"> <li>▶ See <i>Database tab parts and functions</i> on page 2 - 13 for more information about specifying the number of ODBC connections.</li> <li>▶ See your Microsoft documentation for more information about Microsoft threading policies.</li> </ul>
Check this box is you would like Gentran:Server to automatically purge old messages	Indicates (if selected) that Gentran:Server should automatically purge old messages at the specified interval.
Purge messages older than	Specifies the number of days after which messages will be purged.
Purge will be performed daily at	Specifies (by dragging the slide bar) the preferred time at which the automatic message purge should be performed.
<b>OK</b>	Saves changes; exits the dialog box
<b>Cancel</b>	Closes the dialog box without saving changes.
<b>Help</b>	Enables access to online Help.

**Files Tab** This illustration shows an example of the Files tab of the Server Properties dialog box.



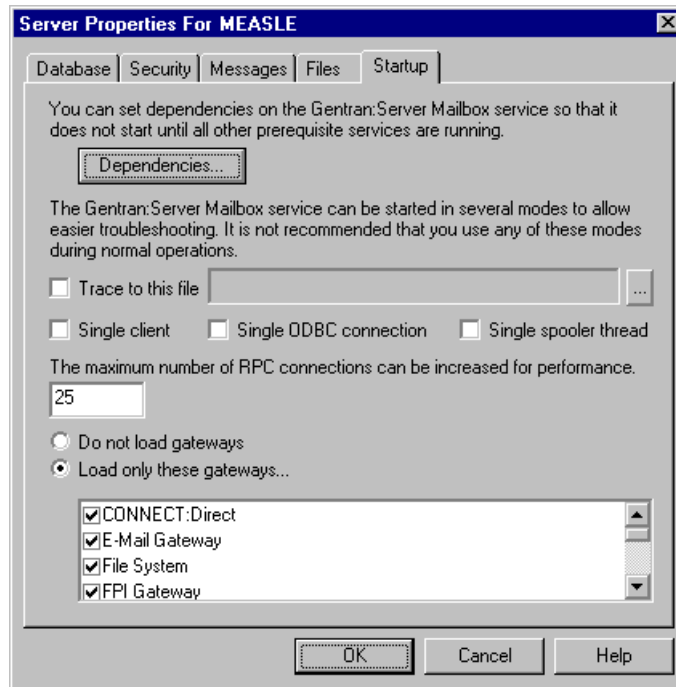
### Files tab parts and functions

This table describes the parts of the Files tab of the Server Properties dialog box and their functions.

Part	Function
(message store)	Specifies the folder where you want Gentran:Server Mailbox Server to use for the message store.
<b>Browse</b>	Enables you to browse for a folder.
(security information)	Specifies the filename where you want Gentran:Server Mailbox Server to store security information.
<b>Browse</b>	Enables you to browse for a filename.
<b>OK</b>	Saves changes; exits the dialog box
<b>Cancel</b>	Closes the dialog box without saving changes.
<b>Help</b>	Enables access to online Help.

**Startup Tab**

This illustration shows an example of the Startup tab of the Server Properties dialog box.



**Startup tab parts and functions**

This table describes the parts of the Startup tab of the Server Properties dialog box and their functions.

Part	Function
<b>Dependencies</b>	Displays the Dependencies dialog box, which enables you to configure dependencies among the Mailbox Server services.
Trace to this file	Indicates (if selected) that data will be traced to the specified file.
... (browse button)	Enables you to browse to select the specific file to which you want the system to log traced data.
Single Client	Indicates (if selected) that the system should start single client mode.
Single ODBC Connection	Indicates (if selected) that the system should use a single ODBC connection.  <b>Note</b> Select this checkbooks if you want to limit your ODBC connections.

(Continued on next page)



<b>(Contd) Part</b>	<b>Function</b>
Single Spooler Thread	<p>Indicates (if selected) that the system should use a single spooler thread.</p> <p><b>Note</b> Select this checkbooks if you want to limit your spooler threads.</p>
The maximum number of RPC connections can be increased for performance	<p>Specifies the number of possible RPC (remote procedure call) connections to Mailbox Server in a user interface.</p> <p><b>Warning</b> You should only change this value if you are certain that doing so will improve your system performance. Arbitrarily changing this value can have an adverse effect on system performance.</p> <p>You must be careful to type a reasonable values in this box, and if you are unsure what is reasonable in terms of your system, do not change the default value of 25. Large values on Server, Advanced Server, or Datacenter Server can cause a large amount of non-paged pool memory to be used. Conversely, using too small a value is also unfavorable, as it may result in TCP SYN packets being met by TCP RST from the server if the backlog queue is exhausted. You need to balance your system's memory footprint versus its scalability requirements when determining the proper value for this box.</p> <p>Before a server application can accept remote procedure calls, it must be available on the network. To do this, the server indicates to the RPC Run time that it is willing to accept calls on one or more protocol sequences. Choosing the protocol sequences a server application supports is an important decision, as different protocol sequences have very different capabilities.</p> <p>Most server programs use all protocol sequences available on the network. To receive remote procedure call requests, a server must register at least one protocol sequence with the RPC run-time library. For each protocol sequence registered by a server, the RPC run-time library creates one or more endpoints through which the server receives remote procedure call requests. The RPC run-time library creates different endpoints for each protocol sequence and the endpoint name is generated by the RPC run time or the operating system. The RPC run time or the Windows Sockets provider may override the value.</p> <p><b>Example</b> For example, on Windows XP Personal and Professional, or Windows 2000 Professional, the value is limited to 5. Values greater than 5 are ignored (5 is used instead). On Windows XP/2000 Server, Advanced Server, and Datacenter Server the value you specify in this box is honored.</p> <p style="text-align: right;">(Continued on next page)</p>

<b>(Contd) Part</b>	<b>Function</b>
Do not load Gateways	Indicates (if selected) that no installed gateways will be loaded on this machine.
Load only these Gateways	Indicates (if selected) that only the selected gateways (in the list below) will be loaded on this machine.
(gateways list)	Displays a list of installed gateways.
<b>OK</b>	Saves changes; exits the dialog box
<b>Cancel</b>	Closes the dialog box without saving changes.
<b>Help</b>	Enables access to online Help.

---

# Mailbox Properties

**Introduction** The Mailbox Properties dialog box defines the properties of the mailbox.

**Addressing Tab** This illustration shows an example of the Addressing tab of the Mailbox Properties dialog box.



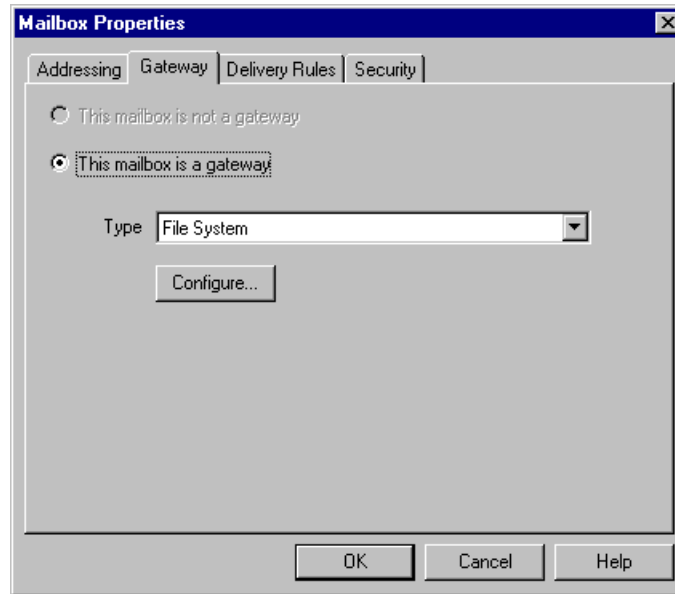
**Parts and functions** This table describes the parts of the Addressing tab of the Mailbox Properties dialog box and their functions.

Part	Function
Name	Defines the name of the mailbox.
Gentran e-mail address	Defines the Gentran e-mail address for messages sent from the mailbox.
<b>OK</b>	Saves changes; exits the dialog box
<b>Cancel</b>	Closes the dialog box without saving changes.
<b>Help</b>	Enables access to online Help.



**Gateway Tab**

This illustration shows an example of the Gateway tab of the Mailbox Properties dialog box.



**Parts and functions**

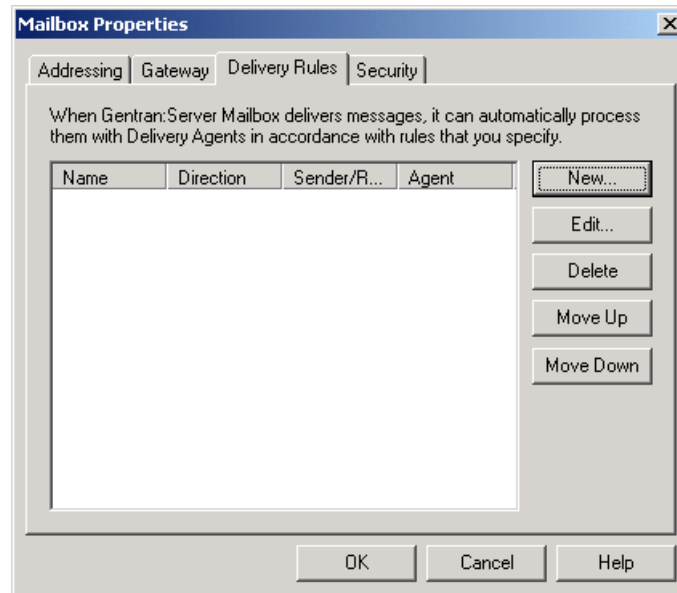
This table describes the parts of the Gateway tab of the Mailbox Properties dialog box and their functions.

Part	Function
Gateway	Specifies whether the the mailbox is or is not a gateway.  Options are: <ul style="list-style-type: none"> <li>▶ This mailbox is not a gateway.</li> <li>▶ This mailbox is a gateway.</li> </ul>
Type	Specifies the type of gateway. Active when “This mailbox is a gateway” radio button is selected.
<b>Configure</b>	Enables you to configure properties for a selected gateway.
<b>OK</b>	Saves changes; exits dialog.
<b>Cancel</b>	Closes the dialog box without saving changes.
<b>Help</b>	Enables access to online Help.



**Delivery Rules Tab**

This illustration shows an example of the Delivery Rules tab of the Mailbox Properties dialog box.

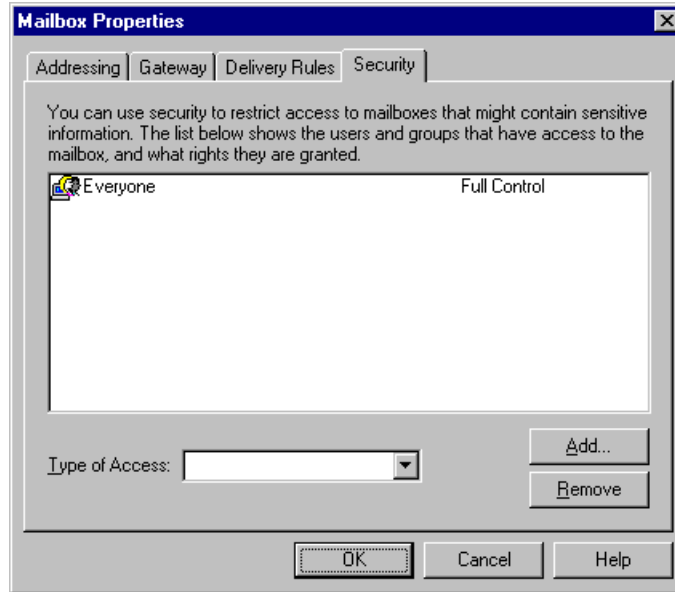
**Parts and functions**

This table describes the parts of the Delivery Rules tab of the Mailbox Properties dialog box and their functions.

Part	Function
Name	Defines the name of the Delivery Rule.
Direction	Identifies whether the rule is run when sending or receiving a message.
Sender/Recipient	Identifies the mailbox of the sender or recipient. The mail address can be specified in addition to the mailbox name.
Agent	Identifies the name of the delivery agent to be run.
New	Creates new Delivery Rules.
Edit	Edits existing Delivery Rules.
Delete	Deletes Delivery Rules.
Move Up	Moves the selected Delivery Rule up in the processing order.
Move Down	Moves the selected Delivery Rule down in the processing order.
OK	Saves changes; exits the dialog box.
Cancel	Closes the dialog box without saving changes.
Help	Enables access to online Help.

**Security Tab**

This illustration shows an example of the Security tab of the Mailbox Properties dialog box.



**Parts and functions**

This table describes the parts of the Security tab of the Mailbox Properties dialog box and their functions.

Part	Function
User's list	Defines users and groups that have access to mailbox.
Type of Access	Designates level at which a user can interact with a mailbox. Values are: <ul style="list-style-type: none"> <li>▶ Full control</li> <li>▶ Read</li> <li>▶ Write</li> </ul>
<b>Add</b>	Enables you to grant users or groups mailbox access.
<b>Remove</b>	Enables you to take away user or group mailbox access.
<b>OK</b>	Saves changes; exits the dialog box.
<b>Cancel</b>	Closes the dialog box without saving changes.
<b>Help</b>	Enables access to online Help.

## Import/Export Dialog Box

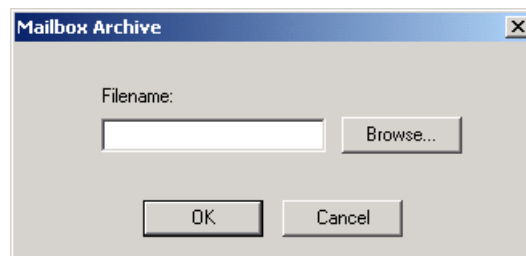
**Introduction** The Import/Export dialog box enables you to export a mailbox as an XML file and then import into Mailbox Server Manager on another machine or system.

**How to access** To access the export function, right-click a mailbox and select **Export** from the shortcut menu.

To access the import function, right-click the Mailboxes node and select **Import** from the shortcut menu.

### Import/Export dialog box

This is an example of the Import/Export dialog box.



### Parts and functions

This table describes the parts of the Import/Export dialog box and its functions.

Part	Function
Filename	The name of the file to be imported or exported.
<b>Browse</b>	Enables you choose a file to import or export the mailbox.
<b>OK</b>	Performs the import or export function and exits the dialog box.
<b>Cancel</b>	Cancels the function and exits the dialog box.

# Mailbox Server Services

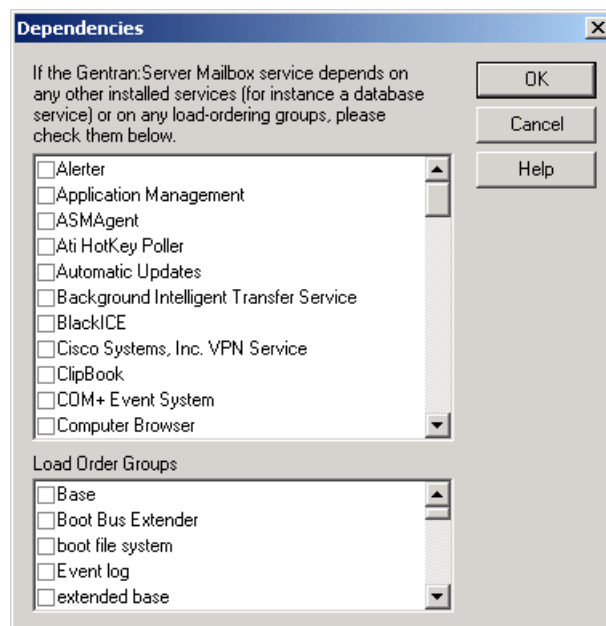
## How to Configure Services Dependencies

### Introduction

Mailbox Server operation is based on Windows services. These services are often dependent upon one another and must be configured to start and stop in the correct sequence.

### Dependencies dialog

This illustration shows the Mailbox Server services Dependencies dialog box.



### Parts and functions

This table describes the parts of the Services Dependencies dialog box and their functions.

Part	Function
Services	Displays the list of Microsoft Windows services available on the Mailbox Server machine.
Load Order Groups	Displays the list of groups of Windows services on the Mailbox Server machine.
<b>OK</b>	Saves changes; exits the dialog box.
<b>Cancel</b>	Closes the dialog box without saving changes.
<b>Help</b>	Enables access to online Help.

**Procedure** Use this procedure to configure the dependencies among the Mailbox Server services.

Step	Action
1	Start the <b>Mailbox Server Manager</b> .
2	Select the Mailbox Server.  <b>Example</b> MEASLE
3	Right-click and select <b>Properties</b> .  <b>System Response</b> The system displays the Mailbox Server properties dialog box.
4	Select the <b>Startup tab</b> .
5	Click <b>Dependencies</b> .  <b>System Response</b> The system displays the Dependencies dialog box.
6	Select the check boxes upon which the Gentran:Server Mailbox service is dependent, and click <b>OK</b> .  <b>Example</b> You use the Microsoft SQL database with Gentran:Server. To ensure that the SQL database service is running when you start the Gentran:Server Mailbox service, select the MSSQLServer service from the Services list. Windows will start the MSSQLServer service before starting the Gentran:Server Mailbox service.

## How to Start the Mailbox Service

**Introduction** Normally, the Gentran:Server Mailbox service is started automatically when you start the Gentran:Server Executive service. However, there may be occasions when you are required to stop and restart the Gentran:Server Mailbox service.

**Procedure** Use this procedure to start the Gentran:Server Mailbox service.

Step	Action
1	Start the <b>Mailbox Server Manager</b> .  <b>System Response</b> The system displays the Mailbox Server Manager browser.
2	Select the <b>Mailbox server</b> .
3	Right-click and select <b>Start</b> to initiate message routing on the selected Mailbox server.  <b>Note</b> Gentran:Server Executive and Gentran:Server Communications services must be restarted, as well.

## How to Stop the Mailbox Service

---

**Introduction** The Gentran:Server Mailbox service routes messages within the Mailbox system.

The Gentran:Server Executive service is dependent upon the Gentran:Server Mailbox service. You may use the services applet in the Microsoft Windows Control Panel to stop the Gentran:Server Mailbox service.

---

**When to use** You would need to stop the Gentran:Server Mailbox service before you perform routine maintenance tasks on your SQL database.

---

**Before you begin** Before you stop the Mailbox service on Gentran:Server, you must stop the Gentran:Server Executive and Gentran:Server Communications services.

---

**Procedure** Use this procedure to stop the Gentran:Server Mailbox service.

Step	Action
1	Start the <b>Mailbox Server Manager</b> .  <b>System Response</b> The system displays the Server Mailbox Manager browser.
2	Select the <b>Mailbox server</b> .
3	Right-click, and select <b>Stop</b> to halt message routing on the selected Mailbox server.  <b>Note</b> You will receive an error message if the Gentran:Server Executive service or Gentran:Server Communications service have not already been halted.

---



# Gateway Configuration Procedures

## Configuration Process

**Introduction** Before you can begin to send and receive documents with your trading partners you need to configure your communications hardware and software.

**Configuration stages** This table lists the stages in configuring your communications for collecting and extracting messages to a folder on your file system.

Stage	Description
1	Configure the File System Gateway. <b>Reference</b> See <i>How to Configure Your File System Gateway</i> on page 2 - 32 for more information.
2	Create the File System mailboxes you intend to use. <b>Reference</b> See <i>How to Create File System Mailboxes</i> on page 2 - 33 for more information.

**Optional gateway process** This table lists the stages in configuring your communications for use with remote messaging systems.

Stage	Description
1	Install the optional gateway. <b>Reference</b> See the “Gentran:Server® Windows® Options Pack Installation Card” for installation instructions.
2	Configure the optional gateway. <b>Reference</b> See the Configuration Guide online documentation that was installed with the optional gateway for procedural information.
3	Create the mailboxes you intend to use. <b>Reference</b> See the Configuration Guide online documentation that was installed with the optional gateway for procedural information.

## How to Configure Your File System Gateway

**Introduction** The first stage in setting up your communications controller to route messages to your file system, is to configure your File System Gateway. This gateway is used for extracting outbound messages to a folder on your file system, or for collecting inbound messages and routing them to Gentran:Server mailboxes.

**Before you begin** Ensure that the folder you are using has been defined.

**Procedure** Use this procedure to configure your File System Gateway.

Step	Action
1	Start the <b>Mailbox Server Manager</b> .  <b>System Response</b> The system displays the Server Manager browser.
2	Select the Mailbox Server in the Server Manager pane, and then right-click and select <b>Register Server</b> .  <b>System Response</b> The system displays the Register Server dialog box.
3	Enter the name of your Mailbox server, and click <b>OK</b> . If the Communications Server is running on a cluster, enter the cluster name and click <b>OK</b> .
4	Select <b>File System</b> from the Gateway folder.
5	Right-click, and select <b>Properties</b> to define the properties for this gateway.  <b>System Response</b> The system displays the File System Gateway dialog box.
6	Move the slider to the appropriate interval you want to use.
7	Enter <b>Application/EDI</b> in the Default Content Type box.
8	Click <b>OK</b> to complete the configuration of this gateway.  You are now ready to create File System mailboxes to use with this gateway.

# How to Create File System Mailboxes

**Introduction** After you have configured the File System Gateway, you must create mailboxes for each Trading Partner with whom you exchange messages.

**Before you begin** Before you begin creating mailboxes for your Trading Partners you must have the following pieces of information:

- Trading Partner name
- Trading Partner EDI code or your trading partner's e-mail address
- The folder where outbound messages to this Trading Partner are to be stored
- The folder where inbound messages from this Trading Partner are to be retrieved

**Procedure** Use this procedure to create File System mailboxes.

Step	Action
1	Open the <b>Mailbox Server Manager</b> .
2	Select the <b>Mailboxes</b> folder icon.
3	Right-click, and select <b>Create</b> .  <b>System Response</b> The system displays the Create Mailbox Wizard dialog box.
4	Enter the name of the mailbox you are creating, and click <b>Next</b> twice.  <b>System Response</b> The system displays a dialog asking whether you want use the mailbox as a gateway.
5	Click <b>Yes, use this mailbox as a gateway</b> .
6	Select <b>File System</b> as the type of gateway to use with this mailbox, and click <b>Next</b> .  <b>System Response</b> The system displays the Summary dialog box.  <span style="color: green;">(Continued on next page)</span>

<b>(Contd) Step</b>	<b>Action</b>	
7	<p>Is the information that you entered correct?</p> <ul style="list-style-type: none"> <li>▶ If yes, click <b>Finish</b>.</li> <li>▶ If no, click the <b>Back</b> button to correct the information. Click <b>Finish</b>.</li> </ul> <p><b>System Response</b> The system displays the File System Gateway Properties dialog box.</p> <p><b>Note</b> If you attempt to create a mailbox and the data store is missing, the system generates an error message box informing you that the mailbox cannot be created. Click <b>OK</b> to exit the message box and click <b>Cancel</b> to exit the Create Mailbox Wizard.</p>	
8	Use this table to determine your next step.	
	<b>IF...</b>	<b>THEN select...</b>
	you are sending messages to a Trading Partner,	the <b>Extraction</b> tab and continue with Step 9.
you are receiving messages from a Trading Partner,	the <b>Collection</b> tab and continue with Step 13.	
9	Select the <b>Extract files from this mailbox</b> check box.	
10	Enter a valid path name in the <b>When a message is sent to this mailbox, extract it to this folder</b> box.	
11	Use this table to determine your next step.	
	<b>IF you want to...</b>	<b>THEN select...</b>
	append all messages to a single file,	<b>Append all messages to a single file</b> option and enter a filename in the box.
	extract each message into a unique file,	<b>Put each message in a separate file</b> .
extract each message attachment into a unique file,	<b>Put each attachment in a separate file</b> .	
12	<p>Do you receive messages from a Trading Partner?</p> <ul style="list-style-type: none"> <li>▶ If yes, click the <b>Collection</b> tab and continue with Step 13.</li> <li>▶ If no, click <b>OK</b>. You have completed this procedure.</li> </ul> <p style="text-align: right; color: green;">(Continued on next page)</p>	

<b>(Contd) Step</b>	<b>Action</b>	
13	Select the <b>Collect files into this mailbox</b> check box.	
14	Enter a path name in the <b>Collect files from this folder</b> box.  <b>Warning</b> We recommend that you create a new folder for use in collecting files. <b>Do not</b> use a folder that contains files with the following extensions: .exe, .dll, .hlp, .bat, .cmd, .sys, .cpl, .ocx, .map, .stp, .tpl, .ses, .ard, .arv.  <b>Note</b> Be aware that all items in the new folder will be collected and deleted.	
15	Use this table to determine your next step.	
	<b>IF you want to...</b>	<b>THEN select...</b>
	create a single message that merges all the files into a single attachment,	<b>Create a single message with all files in one attachment.</b>
	create a single message with each file added as an attachment to the message,	<b>Create a single message with an attachment for each file.</b>
create a unique message for each file that is collected,	<b>Create a message for each file.</b>	
16	Enter <b>Application/EDI</b> in the Use this Content Type for all attachments box.  <b>Note</b> You may also enter Application/Import to have the system import the message and automatically import the file.	
17	Click <b>Edit Recipients</b> .  <b>System Response</b> The system displays the Edit Recipients dialog box.	
18	Select <b>Gentran Application</b> , and click <b>To</b> to forward message that you receive to Gentran:Server.  <b>System Response</b> The system displays the Email Addresses dialog box.  (Continued on next page)	

<b>(Contd) Step</b>	<b>Action</b>
19	Do you want to specify an e-mail address? <ul style="list-style-type: none"><li>▶ If yes, enter the e-mail address in the box, and click <b>Add</b>. Repeat this step for each e-mail address that you want to specify. Click <b>OK</b> to return to the Edit Recipients dialog box. Proceed to the next step.</li><li>▶ If no, click <b>Cancel</b>. Proceed to the next step.</li></ul>
20	Click <b>OK</b> . <b>System Response</b> You return to the Collection tab.
21	Click <b>OK</b> to save your changes.

---

## How to Modify Mailbox Properties

**Introduction** This section describes how to modify mailbox properties that were created using the Create Mailbox Wizard.

**Procedure** Use this procedure to modify mailbox properties.

Step	Action	
1	Start the <b>Mailbox Server Manager</b> .	
2	Expand the <b>Mailboxes</b> folder.	
3	Select the mailbox for which you want to add or modify properties.	
4	Right-click, and select <b>Properties</b> from the short-cut menu.  <b>System Response</b> The system displays the Mailbox Properties dialog box.	
5	Use this table to determine your next step.	
	<b>IF you want to change the mailbox's...</b>	<b>THEN click this tab...</b>
	<ul style="list-style-type: none"> <li>▶ name</li> <li>▶ Gentran E-mail address</li> </ul>	<b>Addressing</b>
	<ul style="list-style-type: none"> <li>▶ Gateway properties</li> <li>▶ Configuration properties</li> </ul>	<b>Gateway</b>
	delivery rules	<b>Delivery Rules</b>
user security permissions	<b>Security</b>	
6	Make the appropriate modifications, and click <b>OK</b> to save changes and to exit the dialog box.	

## How to Export a Mailbox

---

**Introduction** The Export function enables you to export a mailbox as an XML file so it can then be imported into Mailbox Server Manager on another machine or Gentran:Server system.

---

**Procedure** Use this procedure to export a mailbox.

Step	Action
1	Right-click the mailbox that you want to export and select <b>Export</b> from the shortcut menu.
2	Type the name of the XML file to which the mailbox will be exported or click <b>Browse</b> to select the location and name of the file.
3	Click <b>OK</b> . <b>System Response</b> The system exports the mailbox to the XML file. <b>Reference</b> You can now import the file into Mailbox Server Manager on another machine or Gentran:Server system. See <i>How to Import a Mailbox</i> on page 2 - 39 for more information.

---



# How to Import a Mailbox

**Introduction** The Import function enables you to import a mailbox that was previously exported to an XML file into Mailbox Server Manager on another machine or Gentran:Server system.

**Procedure** Use this procedure to Import a mailbox.

Step	Action
1	Right-click Mailboxes node on the machine/system into which you want to import the previously exported mailbox, and select <b>Import</b> from the shortcut menu.
2	Click <b>Browse</b> to select the location and name of the file that will be imported.
3	Click <b>OK</b> . <b>System Response</b> The system imports the mailbox. <b>Note</b> if you are importing a file copy mailbox you need to manually create the collection and extraction directories after the import. See <i>How to Create File System Mailboxes</i> on page 2 - 33 for more information.



---

# Working with Lists

---

## Contents

- ▶ Overview . . . . . 3 - 2
  - ▶ How to Create a Distribution List . . . . . 3 - 3
  - ▶ How to Delete Distribution Lists . . . . . 3 - 5
  - ▶ How to Create Recipient Lists . . . . . 3 - 6
-

## Overview

---

**In this chapter**

This chapter describes the procedures for:

- creating and removing distribution lists
- creating a recipient list.

---

**Key terms**

This table lists the key terms used in this chapter.

<b>Term</b>	<b>Description</b>
distribution list	A global list of mailboxes. A distribution list is a list that can be used by all mailbox users.
recipient list	A list of mail addresses that is associated with a message. However, File System Gateway mailboxes allows you to set up default recipient lists that are used when messages are sent through the respective gateway. A recipient list can include distribution lists, and primary and secondary recipients.

---

## How to Create a Distribution List

**Introduction** One of the features of Mailbox Server is the ability to create lists of mail recipients. These distribution lists allow you broadcast a message to a large number of mail users.

**Definition** A distribution list is a list of Mailbox Server mailboxes. This list is used when you want to send a message to a group of addresses, rather than to a single individual.

**Example**

This is an example of a distribution list.

EDI Administrators:

- Mike Xavier
- Jane Kennedy
- Emily Bennet

In this example, the distribution list name is EDI Administrators. When a message is sent to this list, the message is relayed to three mailboxes that you have created in Mailbox Server.

**When to use** Use distribution lists when you want Mailbox Server to send messages to multiple mailboxes.

**Procedure** Use this procedure to create a distribution list.

Step	Action
1	Start the <b>Mailbox Server Manager</b> .
2	Select the <b>Distribution Lists</b> folder icon.
3	Right-click, and select <b>Create</b> .  <b>System Response</b> The system displays the Create Distribution List Wizard.
4	Enter a descriptive name, and click <b>Next</b> .  <b>System Response</b> The system displays a dialog box asking you to choose distribution list recipients.  <span style="color: #6aa84f;">(Continued on next page)</span>

<b>(Contd) Step</b>	<b>Action</b>
5	<p>Select the check box associated with each mailbox that you want to add to your distribution list, and click <b>Finish</b>.</p> <p><b>Note</b> You may select more than one check box.</p>
6	<p>Was the mailbox selection that you made in Step 5 a gateway?</p> <ul style="list-style-type: none"><li>▶ If yes, the system displays the EMail Addresses dialog box for the gateway mailbox that you selected in Step 5. Enter a recipient e-mail address in the text box, and click <b>Add</b>. Repeat this process for each e-mail address that you want to specify. Click <b>OK</b> to finish adding distribution list recipients.</li></ul> <p><b>Note</b> The system displays an EMail Addresses dialog box for each gateway mailbox that you selected in Step 5.</p> <ul style="list-style-type: none"><li>▶ If no, click <b>OK</b> to finish adding distribution list recipients.</li></ul>

---

## How to Delete Distribution Lists

---

**Introduction** This topic describes the procedure for removing distribution lists from Mailbox Server.

---

**When to use** Delete distribution lists when you no longer exchange messages with the recipients in the distribution list.

---

**Procedure** Use this procedure to delete distribution lists.

Step	Action
1	Start the <b>Mailbox Server Manager</b> .
2	Double-click the <b>Distribution Lists</b> folder icon to expand the list.
3	Select the Distribution list you want to delete, and press <b>Delete</b> .  <b>System Response</b> You receive a confirmation box asking you to verify that you want to delete the distribution list.
4	Click <b>Yes</b> to delete the distribution list.

---

## How to Create Recipient Lists

**Introduction** Recipient lists are used to tell the Mailbox Server where to deliver messages. Normally, you create a File System Gateway recipient list when you configure File System Gateway collection properties. However, you can add recipient lists to a File System Gateway at a later time.

**When to use** Use this procedure when you want to create a list of message recipients for a File System Gateway mailbox.

**Before you begin** Before you create a recipient list, create:

- all of the mailboxes that you want to include in the recipient list
- all of the distribution lists that you want to include in the recipient list

**Procedure** Use this procedure to create a recipient list.

Step	Action
1	Start the <b>Mailbox Server Manager</b> .
2	Double-click the <b>Mailboxes</b> folder icon to open the folder. <b>System Response</b> The system displays a list of mailboxes.
3	Select a file system mailbox.
4	Right-click, and select <b>Properties</b> . <b>System Response</b> The system displays the mailbox properties dialog box.
5	Select the <b>Gateway</b> tab. <b>System Response</b> The system displays the mailbox properties dialog box.
6	Click <b>Configure</b> . <b>System Response</b> The system displays the Collection tab of File System Gateway Properties dialog box.

(Continued on next page)



<b>(Contd) Step</b>	<b>Action</b>
7	Verify that the <b>Collect Files into this folder</b> check box is selected.  <b>Note</b> See Step 13 of <i>How to Create File System Mailboxes</i> on page 2 - 33 for instructions for configuring File System Gateway Collection properties.
8	Click <b>Edit Recipients</b> .  <b>System Response</b> The system displays the Edit Recipients dialog box.
9	Select the mailbox addresses or distribution lists that you wish to include, and click <b>To, CC, or BCC</b> to move the names into the appropriate lists.  <b>Note</b> If you make a mistake, select the address or distribution list that is incorrect, and press <b>Delete</b> .
10	Click <b>OK</b> when you have added all the addresses and distribution lists to the appropriate recipient list.  <b>System Response</b> You return to the properties dialog box.
11	Click <b>OK</b> .



---

# Working with Delivery Rules

---

<b>Contents</b>	<b>Overview</b> .....	<b>4 - 2</b>
	▶ Introduction.....	4 - 2
	▶ Delivery Rules.....	4 - 3
	▶ Delivery Agents.....	4 - 6
	<b>EXE Delivery Agent</b> .....	<b>4 - 7</b>
	▶ Overview.....	4 - 7
	▶ VATPRINT Utility.....	4 - 10
	▶ XPROCESS Utility.....	4 - 12
	<b>Xprocess DLL Agent</b> .....	<b>4 - 18</b>
	▶ Overview.....	4 - 18
	<b>Properties</b> .....	<b>4 - 24</b>
	▶ Delivery Rules Properties.....	4 - 24
	<b>Procedures</b> .....	<b>4 - 27</b>
	▶ How to Use a Delivery Rule.....	4 - 27
	▶ How to Set the Processing Order.....	4 - 30
	▶ How to Edit a Delivery Rule.....	4 - 31
	▶ How to Delete a Delivery Rule.....	4 - 32

---

# Overview

## Introduction

---

**In this chapter** This chapter describes Mailbox Server Delivery Rules and delivery agents.

---

**Key terms** This table lists the key terms used in this chapter.

<b>Term</b>	<b>Description</b>
delivery agent	A tool that manages Mailbox Server message processing.
Delivery Rule	A list of criteria by which processing of messages is performed.

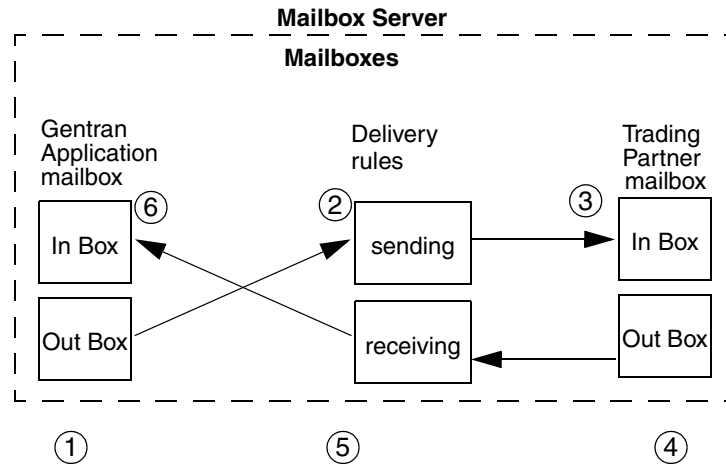
---

# Delivery Rules

- 
- Introduction** This section provides a high-level overview of Mailbox Server Delivery Rules.
- 
- Definition** A Delivery Rule is a set of conditions run on a mailbox's messages. When a message meets all conditions in a Delivery Rule, the system runs the command specified in the Delivery Rule. This command performs an action on the items attached to the message.
- You can link a Delivery Rule to a sending mailbox or to a receiving mailbox. The system applies the Delivery Rule only to the messages of the mailbox to which the Delivery Rule is linked.
- 
- Example** Items entering Mailbox XYZ need to be enveloped. Message items that Mailbox ABC sends to Mailbox XYZ are not enveloped. You need to create a Delivery Rule that runs an enveloping program on items routed from Mailbox ABC to Mailbox XYZ. You decide which Mailbox (ABC or XYZ) should own the Delivery Rule and then add the rule to that mailbox.
- 
- Delivery Rule conditions** When you create a Delivery Rule, you specify the conditions for running the command in the Delivery Rule. You can set one or more of these conditions:
- whether the command is run when sending or receiving a message (required)
  - name of the sending or recipient mailbox (optional)
  - e-mail address of the sender or receiver (optional)
  - content type (optional)
  - Delivery Agent to be used (required)
  - command line parameters (required)
- 
- Multiple Delivery Rules** If a mailbox has more than one associated Delivery Rule, the system evaluates and applies the Delivery Rules in the order in which they are listed on the Delivery Rules tab of the Mailbox Properties dialog box.
- When a mailbox has multiple Delivery Rules, each Delivery Rule evaluates and processes the output of the previous rule. This means that the second Delivery Rule works on the output of the first Delivery Rule, the third Delivery Rule works on the output of the second Delivery Rule, and so on.
- Reference**  
See *Delivery Rules tab* on page 4 - 24 for more information.
-

### Delivery Rule diagram

This diagram illustrates how Delivery Rules work with mailboxes. The numbers on this diagram correspond to the table below.



#### Note

In the diagram above, the Delivery Rule was created on the Gentran Application mailbox.

### Delivery Rule description

The stages in this table correspond to the above diagram.

Stage	Description
1	A message is created in the Gentran Application mailbox. A Delivery Rule has been created and assigned to this mailbox.
2	As the message is routed from the Gentran Application Out Box to the Trading Partner In Box, the message is evaluated based on the criteria established in the Delivery Rule.  If the conditions of the Delivery Rule are defined to be triggered when sending a message to this Trading Partner, the Delivery Rule is invoked and the message is processed.
3	The modified message is transferred to the Trading Partner's In Box.
4	A message is created in the Trading Partner's Out Box.
5	As the message is routed from the Trading Partner's Out Box to the Gentran Application In Box, the message is evaluated based on the criteria established in the Delivery Rule. If the conditions of the Delivery Rule are defined to be triggered when receiving a message from the Trading Partner, the Delivery Rule is invoked and the message is processed.
6	The modified message is transferred to the Gentran Application In Box.

---

**Delivery Rule  
command line**

At the heart of a Delivery Rule is the command that you run against the messages being sent or received. The command line parameters depend on the Delivery Agent being run.

---

# Delivery Agents

---

**Introduction**

A delivery agent is a Dynamic Link Library (DLL) that performs processing on messages that are sent and received by Mailbox Server.

---

**Gentran:Server  
Delivery Agents**

When you installed Gentran:Server, two delivery agents were also installed in the Gentran:Server bin folder for use with your mailboxes.

- *EXE Delivery Agent* on page 4 - 7
  - *Xprocess DLL Agent* on page 4 - 18
-



# EXE Delivery Agent

## Overview

**Introduction** The EXE Delivery Agent that is provided with Mailbox Server controls the launch of executable programs to be run against messages that are routed by Mailbox Server. You use these executable programs to further process messages as they are being sent or received within Mailbox Server. To launch these executable programs you create a Delivery Rule for a specific mailbox.

**How the EXE Delivery Agent works** For each message that meets the Delivery Rule criteria, the EXE Delivery Agent writes the message attachments to files, calls the executable program defined in the Delivery Rule, and then writes the output from the executable program back into the attachments.

**Syntax** When using the EXE Delivery Agent, the syntax of the Delivery Rule command line parameters is:

```
/i InputFileName /o OutputFileName /d WorkingDirectory EXE RealParms
```

**Delivery Rule tokens** Several substitution tokens are provided with Gentran:Server for use with the EXE delivery agent. This table lists the substitution tokens.

### Caution

**Token names are case sensitive.** If you write \$input instead of \$Input, the proper input filename will not be used.

### Reference

See *EXE Delivery Agent* on page 4 - 7 for more information.

Token	Description
\$Input	Stores the file name of the input.
\$Output	Stores the file name of the output.
\$Dir	Stores the working directory name.
\$Filename	Stores the original filename of the attachment.
\$SenderName	Stores the name of the sender's mailbox.

(Continued on next page)

Token	Description
\$SenderEMail	<p>Stores the sender's email address. The \$SenderEMail is composed of two parts: the gateway email address and the mailbox. These two parts are separated by the symbol "&lt;-&gt;".</p> <p><b>Example</b> Your system is configured to use the MAPI Gateway. The MAPI Gateway mailbox is named Exchange Server (NTDC). The email address is defined as XCHG_NTDC. The MAPI recipient is joes@stercomm.com. \$SenderEMail would be replaced by: joes@stercomm.com-&gt;XCHG_NTDC.</p>

### Command Line Parameters

This table describes the Delivery Rule command line parameters.

Parameter	Description
/i InputFileName	The file name used as input to the command. This parameter is optional. If you omit this parameter, the delivery agent generates a temporary file name for the attachment. You can also use a Delivery Rule token in place of the InputFileName variable.
/o OutputFileName	The file name used for output from the command. This parameter is optional. If you omit this parameter, the delivery agent generates a temporary file name for the attachment. You can also use a Delivery Rule token in place of the OutputFileName variable.
/d WorkingDirectory	The directory where the executable should be run. This parameter is optional. If you omit this parameter, the executable program is run in the Gentran:Server Bin folder. You can also use a Delivery Rule token in place of the WorkingDirectory variable.
EXE	<p>The name of the executable command. This command can be a batch file or compiled executable program.</p> <p><b>Example</b> program.exe batchfile.bat</p>
RealParms	The list of parameters required by the executable program.

---

**Example** The following example shows a Delivery Rule command line using the XPROCESS Utility.

```
/o $Input XPROCESS.EXE -0 0x00 0x7E $Input
```

In this example, the Delivery Rule takes the file identified by the \$Input token at the end of the line and converts null characters (with a hexadecimal value of 0x00) to tilde(~) characters (with a hexadecimal value of 0x7E) using the XPROCESS Utility. The result of this operation is output (using the /o parameter) to the same file name that was identified with the \$Input token.

**Reference**

See *XPROCESS Utility* on page 4 - 12 for more information.

---

## VATPRINT Utility

**Introduction** The VATPRINT utility is an external data processor used to generate Value Added Tax (VAT) Transmission Reports when sending or receiving TRADACOMS or UK EDIFACT data. This report is generated in the format defined by UK Customs and Excise and the UK Article Number Association (ANA). You invoke the VATPRINT utility in the command line of a Delivery Rule.

**Syntax** The syntax of the VATPRINT utility is:

```
VATPRINT [option] [Print_filename] [Attachment_filename]
```

**Parameters** The VATPRINT utility has the following parameters:

Parameter	Description
Option	/p Writes the report to the printer.  /f Creates or appends the report to a file.
Print_filename	The name of the file to create or append. Used only with the /f option. If the Print_filename contains an asterisk (*), then the asterisk will be replaced with the current date and time in the format YYYYMMDDHHMMSS.
Attachment_filename	The name of the file containing the EDI messages you want the VAT Report for. When used with a Delivery Agent, use \$Input so that the currently processing file name is substituted dynamically each time the Delivery Agent runs.

**Note**

The option to send the VAT report directly to the printer can only be used in stand-alone operation. It can not be used within a Delivery Rule.

---

**Example**

In this example, you want to generate a VAT report from Interoffice Ltd., a Trading Partner in the UK who uses the UK EDIFACT standards. You create a Delivery Rule on the mailbox assigned to Interoffice so that when messages are sent from Interoffice to the Gentran Application mailbox, a VAT report is generated and appended to a file in the C:\Reports folder.

Delivery Rule command line:

```
/o $Input VATPRINT.EXE /f C:\Reports\VATreport.txt $Input
```

---

**Error Handling**

The VATPRINT utility records processing errors in the file Vat.err. This file is stored in the bin directory where you installed Mailbox Server. Errors are time and date stamped. The most recent error is located at the end of the file.

---

# XPROCESS Utility

## Introduction

The XPROCESS utility is an external data processor used when sending or receiving data. You typically use the XPROCESS utility to prepare data for transmission to a Trading Partner, or to prepare data that you received from a Trading Partner. You invoke the XPROCESS utility in the command line of a Delivery Rule.

### Example

The VAN your Trading Partner uses expects each line of data to be terminated with a Carriage Return and Line Feed. Your data is terminated by tilde (~) characters. You use the XPROCESS utility to convert the tildes into Carriage Return / Line Feed characters.

### Note

If you are a new Gentran:Server customer, we suggest you use the Xprocess DLL Agent to perform similar functions.

## Syntax

The syntax of the XPROCESS utility is:

```
XPROCESS [option] [Parameter1] [Parameter2] [Parameter3]
```

## Parameters

The XPROCESS utility has the following option parameters.

### Note

When using a <filename> parameter, you must specify a full path and filename unless this utility is being invoked by means of the EXE Delivery Agent. In that case, only the \$Filename token is necessary to represent the filename.

Option	Description
-0	<p>Converts any specified hexadecimal character [hexValue1] to another hexadecimal character [hexValue2].</p> <p><b>Usage</b> xprocess -0 &lt;hexValue1&gt; &lt;hexValue2&gt; &lt;filename&gt;</p>
-1	<p>Appends the file you specify [filename] to the beginning of the data. This option is often used as a preprocessor when sending data to the AT&amp;T GMS network.</p> <p><b>Usage</b> xprocess -1 &lt;inputfile1&gt; &lt;inputfile2&gt; &lt;outputfile&gt;</p>
-2	<p>Replaces the tilde, Carriage Return, and Line Feed characters with a single Carriage Return. This option is often used as a preprocessor when sending data to the GEIS network.</p> <p><b>Usage</b> xprocess -2 &lt;filename&gt;</p>

(Continued on next page)

<b>(Contd) Option</b>	<b>Description</b>
-3	<p>Replaces all Carriage Returns with tildes and removes all Line Feeds. This option is often used as a preprocessor when receiving data from the GEIS network.</p> <p><b>Usage</b> xprocess -3 &lt;filename&gt;</p>
-4	<p>Removes all Carriage Returns and Line Feeds.</p> <p><b>Usage</b> xprocess -4 &lt;filename&gt;</p>
-5	<p>Removes all Carriage Returns and Line Feeds and adds one hexadecimal character 0x1A at the end of the file. This option is often used as a preprocessor for the TDSI network.</p> <p><b>Usage</b> xprocess -5 &lt;filename&gt;</p>
-6	<p>Removes all hexadecimal 0x1A characters. This option is often used as a preprocessor for the TDSI network.</p> <p><b>Usage</b> xprocess -6 &lt;filename&gt;</p>
-7	<p>Adds GM header and trailer records and removes all Carriage Returns and Line Feeds. This option is often used as a preprocessor for GM. It creates a THS and THD segment for the header and a TTR for the trailer.</p> <p><b>Usage</b> xprocess -7 &lt;youruserid&gt; &lt;theiruserid&gt; &lt;fileonGMsystem&gt;</p>
-8	<p>Replaces all tilde, Carriage Returns, and Line Feed characters with a single Carriage Return. This option is often used as a preprocessor when sending data to the MCI network.</p> <p><b>Usage</b> xprocess -8 &lt;filename&gt;</p>
-9	<p>Replaces all Line Feed characters with a tilde. This option is often used as a preprocessor when receiving data from the MCI network.</p> <p><b>Usage</b> xprocess -9 &lt;filename&gt;</p> <p style="text-align: right;">(Continued on next page)</p>

<b>(Contd) Option</b>	<b>Description</b>
-10	<p>Replaces all Carriage Returns with Carriage Return/Line Feeds. This option is often used when receiving files from COMMERCE:Network.</p> <p><b>Usage</b> xprocess -10 &lt;filename&gt;</p>
-11	<p>Replaces a string of hexadecimal characters with a second string of hexadecimal characters.</p> <p><b>Usage</b> xprocess -11 &lt;hexString1&gt; &lt;hexString2&gt; &lt;filename&gt;</p> <p><b>Note</b> Each hexadecimal string value contains the prefix 0x, followed by a 2-digit hexadecimal value. Together, the prefix and the 2-digit hexadecimal value are considered 1 hexadecimal character.</p> <p><b>Example 1</b> This is an example of a command line using option -11. When executed, this command converts each ~CRLF to ~ (tilde) c:\gensrvnt\bin\xprocess.exe -11 0x7e0x0d0x0a 0x7e inputfile.txt In this example, the first string contains three (3) hexadecimal characters(0x7e,0x0d, and 0x0a) and the second string contains one (1) hexadecimal character (0x7e). Inputfile.txt designates the file name of the input.</p> <p><b>Example 2</b> This is an example of a command line when executed using the EXE Delivery Agent. When executed, this command converts each ~CRLF to ~ (tilde) /o \$Input c:\gensrvnt\bin\xprocess.exe -11 0x7e0x0d0x0a 0x7e \$Input In this example, the first string contains three (3) hexadecimal characters(0x7e,0x0d, and 0x0a) and the second string contains one (1) hexadecimal character (0x7e). The \$Input token designates the file name of the input.</p>
-12	<p>Removes all occurrences of a hexadecimal string from a file.</p> <p><b>Usage</b> xprocess -12 &lt;hex string&gt; &lt;filename&gt;</p>
-13	<p>Inserts a hexadecimal string at the prescribed increment [Nbr Bytes] in the input file.</p> <p>This option is typically used (but not limited to) blocking streamed EDI data.</p> <p><b>Usage</b> xprocess -13 &lt;NbrBytes&gt; &lt;HexStringToInsert&gt; &lt;InputFile&gt;</p>



### Additional Parameters

This table describes additional XPROCESS Utility parameters.

Parameter	Description
hexValue1	<p>A hexadecimal value in the format 0x??. This parameter is used with the -0 option described in <i>Parameters</i> on page 4 - 10 and is the character you want to replace in the data.</p> <p><b>Where:</b> ?? is the hexadecimal value.</p>
hexValue2	<p>A hexadecimal value in the format 0x??. This parameter is used with the -0 option described in <i>Parameters</i> on page 4 - 10 and is the new character you are exchanging for hexValue1.</p> <p><b>Where:</b> ?? is the hexadecimal value.</p>
hexString1	<p>A hexadecimal string in the format 0x??0x??... This parameter is used with option -11 described in <i>Parameters</i> on page 4 - 10.</p> <p><b>Where:</b> ?? is the hexadecimal value.</p> <p><b>Note</b> Each hexadecimal value contains the prefix 0x, followed by a 2-digit hexadecimal value. Together, the prefix and the 2-digit hexadecimal value are considered 1 hexadecimal character.</p> <p><b>Example</b> 0x7e0x0d0x0a</p> <p>This example describes a hexadecimal string containing three hexadecimal characters.</p> <p style="text-align: right;">(Continued on next page)</p>

Parameter	Description
hexString2	<p>A hexadecimal string in the format 0x??0x??... This parameter is used with option -11 described in <i>Parameters</i> on page 4 - 10.</p> <p><b>Where:</b> ?? is the hexadecimal value.</p> <p><b>Note</b> Each hexadecimal value contains the prefix 0x, followed by a 2-digit hexadecimal value. Together, the prefix and the 2-digit hexadecimal value are considered 1 hexadecimal character.</p> <p><b>Example</b> 0x7e0x0d0x0a</p> <p>This example describes a hexadecimal string containing three hexadecimal characters.</p>
filename	<p>The name of the file on which you want to run XPROCESS. This filename is used only when you run XPROCESS from the command line. If you are using XPROCESS in a Delivery Rule, you do not need to include a filename. The filename is passed automatically by Mailbox Server.</p>
NbrBytes	<p>Specifies a predefined increment at which you want to insert a hexadecimal string value. This parameter is used with the -13 option described in <i>Parameters</i> on page 4 - 10.</p>
HexStringToInsert	<p>Specifies a hexadecimal string value that you want to insert at a pre-defined increment. This parameter is used with the -13 option described in <i>Parameters</i> on page 4 - 10.</p>

**Example 1** In this example, a Trading Partner has sent a file that uses Null characters to terminate segments. Gentran:Server expects to see a tilde (~) character as the segment terminator.

#### Original data

```
ISA*00*          *00*          *08*9275310000      *12*5088947000334
*970812*1133*U*00304*000000132*0*P*><null>GS*GP*001677954*5088947000334*9
70812*1133*83*T*003040UCS<null>ST*880*000830001<null>
```

#### Delivery Rule command line

Use the following command line to replace the Null character (hexadecimal value 0x00) with a tilde character (hexadecimal value 0x7E):

```
/o $Input XPROCESS.EXE -0 0x00 0x7E $Input
```

#### Modified data

```
ISA*00*          *00*          *08*9275310000      *12*5088947000334
*970812*1133*U*00304*000000132*0*P*>~GS*GP*001677954*5088947000334*9
70812*1133*83*T*003040UCS~ST*880*000830001~
```

**Example 2** In this example, a Trading Partner has sent a file that uses a forward slash (/) to separate elements. Gentran:Server expects to see an asterisk (\*) character as the element separator.

Original data

```
ISA/00/          /00/          /08/9275310000      /12/5088947000334 /970812/
1133/U/00304/000000132/0/P/>~GS/GP/001677954/5088947000334/9
70812/1133/83/T/003040UCS~ST/880/000830001~
```

#### Delivery Rule command line

Use the following command line to replace the forward slash character (hexadecimal value 0x5C) with an asterisk character (hexadecimal value 0x2A):

```
/o $Input XPROCESS.EXE -0 0x5C 0x2A $Input
```

#### Modified data

```
ISA*00*          *00*          *08*9275310000      *12*5088947000334
*970812*1133*U*00304*000000132*0*P*>~GS*GP*001677954*5088947000334*9
70812*1133*83*T*003040UCS~ST*880*000830001~
```

# Xprocess DLL Agent

## Overview

### Introduction

The Xprocess DLL Agent is provided with Gentran:Server and is used to prepare data for transmission to a Trading Partner, or to prepare data that you received from a Trading Partner. You invoke the Xprocess DLL Agent by selecting it from the Agent list on the Edit Delivery Rule dialog box, and then entering specific command line parameters.

### How the Xprocess DLL Agent works

For each message that meets the Delivery Rule criteria, the Xprocess DLL Agent opens the source message attachment, converts the data according to the option defined, and then writes the output into a new message attachment.

### Option number parameters

This table shows the valid command line options used with the Xprocess DLL Agent.

#### Note

When using a <filename> parameter, you must specify a full path in addition to the filename.

Option	Description
0	<p>Converts any specified hexadecimal character [hexValue1] to another hexadecimal character [hexValue2].</p> <p><b>Usage</b> 0 &lt;hexValue1&gt; &lt;hexValue2&gt;</p> <p><b>Example</b> This is an example of command line option 0. 0 0x0D 0x0A</p> <p>In this example, hexValue 0x0D (carriage return) converts to hexValue 0x0A (line feed).</p>
1	<p>Appends the file you specify [inputFileToAppend] to the beginning of the data. This option is often used as a preprocessor when sending data to the AT&amp;T GMS network.</p> <p><b>Usage</b> 1 &lt;inputFileToAppend&gt;</p> <p><b>Example</b> This is an example of command line option 1. 1 c:\file_directory\filename.txt</p>

(Continued on next page)

<b>(Contd) Option</b>	<b>Description</b>
2	<p>Replaces the tilde, Carriage Return, and Line Feed characters with a single Carriage Return. This option is often used as a preprocessor when sending data to the GEIS network.</p> <p><b>Usage</b> 2</p>
3	<p>Replaces all Carriage Returns with tildes and removes all Line Feeds. This option is often used as a preprocessor when receiving data from the GEIS network.</p> <p><b>Usage</b> 3</p>
4	<p>Removes all Carriage Returns and Line Feeds.</p> <p><b>Usage</b> 4</p>
5	<p>Removes all Carriage Returns and Line Feeds and adds one hexadecimal character 0x1A to the end of the file. This option is often used as a preprocessor for the TDSI network.</p> <p><b>Usage</b> 5</p>
6	<p>Removes all hexadecimal 0x1A characters. This option is often used as a preprocessor for the TDSI network.</p> <p><b>Usage</b> 6</p>
7	<p>Adds GM header and trailer records and removes all Carriage Returns and Line Feeds. This option is often used as a preprocessor for GM. It creates a THS and THD segment for the header and a TTR for the trailer.</p> <p><b>Usage</b> 7 &lt;youruserid&gt; &lt;theiruserid&gt; &lt;fileonGMsystem&gt;</p>
8	<p>Replaces all tilde, Carriage Return, and Line Feed characters with a single Line Feed. This option is often used as a preprocessor when sending data to the MCI network.</p> <p><b>Usage</b> 8</p> <p style="text-align: right; color: green;">(Continued on next page)</p>

<b>(Contd) Option</b>	<b>Description</b>
9	<p>Replaces all Line Feed characters with a tilde character. This option is often used as a preprocessor when receiving data from the MCI network.</p> <p><b>Usage</b> 9</p>
10	<p>Replaces all Carriage Returns with Carriage Return/Line Feeds. This option is often used when receiving files from COMMERCE:Network.</p> <p><b>Usage</b> 10</p>
11	<p>Replaces a string of hexadecimal characters with a second string of hexadecimal characters.</p> <p><b>Note</b> Each hexadecimal value contains the prefix 0x, followed by a 2-digit hexadecimal value. Together, the prefix and the 2-digit hexadecimal value are considered 1 hexadecimal character.</p> <p><b>Usage</b> 11 &lt;hexString1&gt; &lt;hexString2&gt;</p> <p><b>Example</b> This is an example of command line option 11. 11 0x7e0x0d0x0a 0x7e In this example, the first string contains three (3) hexadecimal characters. (0x7e,0x0d, and 0x0a). The second string contains one hexadecimal character (0x7e).</p>
12	<p>Removes all occurrences of a hexadecimal string from a file.</p> <p><b>Usage</b> 12 &lt;StringToDrop&gt;</p> <p><b>Example</b> This is an example of command line option 12. 12 0x??0x??0x??</p> <p style="text-align: right;">(Continued on next page)</p>

<b>(Contd) Option</b>	<b>Description</b>
13	<p>Inserts a hexadecimal string at the specified increment [Nbr Bytes] in the input file.</p> <p>This option is typically used (but not limited to) blocking streamed EDI data.</p> <p><b>Usage</b> 13 &lt;NbrBytes&gt; &lt;HexStringToInsert&gt;</p> <p><b>Example</b> This is an example of command line option 13. 13 4 0x??0x??0x??...</p>

### Additional parameters

This table shows additional parameters used with the Xprocess DLL Agent.

<b>Parameter</b>	<b>Description</b>
hexValue1	<p>A hexadecimal value in the format 0x??. This parameter is used with the 0 option described in <i>Option number parameters</i> on page 4 - 18 and is the character you want to replace in the data.</p> <p><b>Where:</b> ?? is the hexadecimal value.</p>
hexValue2	<p>A hexadecimal value in the format 0x??. This parameter is used with the 0 option described in <i>Option number parameters</i> on page 4 - 18 and is the new character you are exchanging for hexValue1.</p> <p><b>Where:</b> ?? is the hexadecimal value.</p> <p style="text-align: right;">(Continued on next page)</p>

Parameter	Description
hexString1	<p>A hexadecimal string in the format 0x??0x??...This parameter is used with option 11 described in <i>Option number parameters</i> on page 4 - 18.</p> <p><b>Where:</b> ?? is the hexadecimal value.</p> <p><b>Note</b> Each hexadecimal value contains the prefix 0x, followed by a 2-digit hexadecimal value. Together, the prefix and the 2-digit hexadecimal value are considered 1 hexadecimal character.</p> <p><b>Example</b> 0x7e0x0d0x0a</p> <p>This example describes a hexadecimal string containing three hexadecimal characters.</p>
hexString2	<p>A hexadecimal string in the format 0x??0x??...This parameter is used with option 11 described in <i>Option number parameters</i> on page 4 - 18.</p> <p><b>Where:</b> ?? is the hexadecimal value.</p> <p><b>Note</b> Each hexadecimal value contains the prefix 0x, followed by a 2-digit hexadecimal value. Together, the prefix and the 2-digit hexadecimal value are considered 1 hexadecimal character.</p> <p><b>Example</b> 0x7e0x0d0x0a</p> <p>This example describes a hexadecimal string containing three hexadecimal characters.</p>
inputFileToAppend	<p>Specifies a filename value. This parameter is used with the 1 option described in <i>Option number parameters</i> on page 4 - 18 and represents the file that you want append to the beginning of the data. When using this parameter, the full path name is required.</p>
StringToDrop	<p>Specifies a hexadecimal string value. This parameter is used with the 12 option shown described in <i>tOption number parameters</i> on page 4 - 18 and represents the hexadecimal string value that you want to remove from a file.</p> <p style="text-align: right;">(Continued on next page)</p>



Parameter	Description
NbrBytes	Specifies a predefined increment at which you want to insert a hexadecimal string value. This parameter is used with the 13 option described in <i>Option number parameters</i> on page 4 - 18.
HexStringToInsert	Specifies a hexadecimal string value that you want to insert at a pre-defined increment. This parameter is used with the 13 option described in <i>Option number parameters</i> on page 4 - 18.

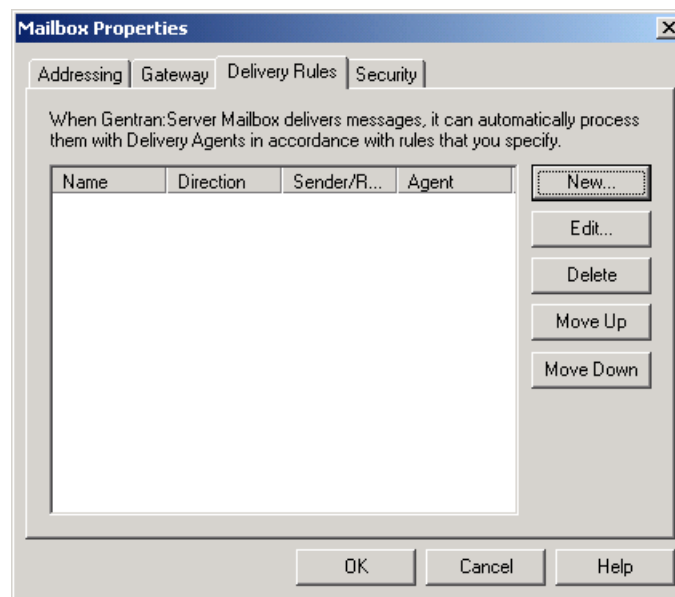
---

# Properties

## Delivery Rules Properties

**Introduction** This section describes the Delivery Rules dialog box and its associated parts and functions.

**Delivery Rules tab** This illustration shows the Delivery Rules tab on the Mailbox Properties dialog box.



**Parts and function** This table describes the parts of the Delivery Rules tab and their function.

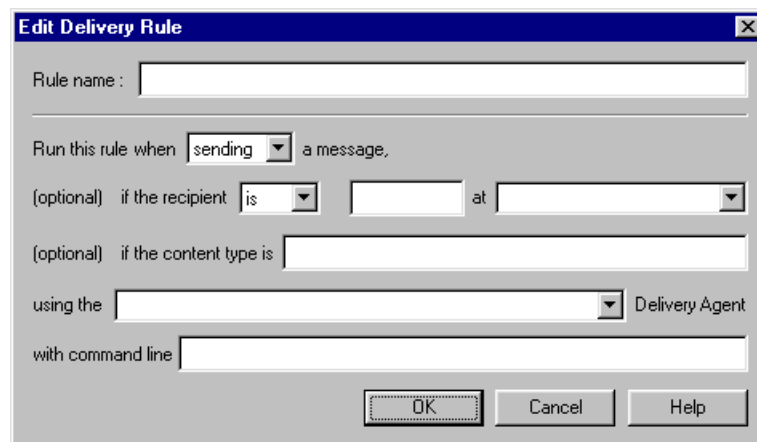
Part	Function
Name	Defines the name of the Delivery Rule.
Direction	Identifies if the rule is run when sending or receiving a message.
Sender/Recipient	Identifies the mailbox of the sender or recipient. The mail address can be specified in addition to the mailbox name.
Agent	Identifies the name of the delivery agent to be run.
<b>New</b>	Creates new Delivery Rules.
<b>Edit</b>	Edits existing Delivery Rules.

(Continued on next page)

(Contd) Part	Function
<b>Delete</b>	Deletes Delivery Rules.
<b>Move Up</b>	Moves the selected Delivery Rule up in the processing order.
<b>Move Down</b>	Moves the selected Delivery Rule down in the processing order.
<b>OK</b>	Saves changes; exits the dialog box.
<b>Cancel</b>	Cancels unsaved changes.
<b>Apply</b>	Applies changes without exiting the dialog box.

### New/Edit Delivery Rule dialog box

This illustration shows the New/Edit Delivery Rule dialog box.



### Parts and function

This table describes the parts of the New Delivery Rule dialog box and their function.

Part	Function
Rule Name	Identifies the name of the Delivery Rule.
Run this rule when	Indicates whether the rule is run when this mailbox sends or receives a message.
If the recipient is	Selects the condition <i>is</i> or <i>is not</i> . The condition applies to the e-mail address and Mailbox Name that follow the condition.
E-mail Name (text box to right of If the recipient is list)	Identifies the alternate or reference name, such as an email address, for the sender or receiver mailbox.

(Continued on next page)

<b>(Contd) Part</b>	<b>Function</b>
Mailbox (list to right of E-Mail name box)	Selects the name of the sender or receiver mailbox.
if the content type is	Sets the specified content type as a condition of delivery.
Using Delivery Agent	Selects the name of the delivery agent that interprets the Delivery Rule and starts the command.
with command line	Specifies the command that is run when the message meets the conditions of the Delivery Rule.
<b>OK</b>	Saves changes; exits the dialog box.
<b>Cancel</b>	Cancels unsaved changes.
<b>Help</b>	Launches online Help system.

---

## Procedures

### How to Use a Delivery Rule

---

**Introduction** Delivery Rules allow you to run executable programs on the message when specific criteria for that message is met.

---

**Before you begin** Before you associate a Delivery Rule with a mailbox, the delivery agent must exist.

---

**Important considerations** The way in which you define a Delivery Rule depends on the way in which you want to administer the Delivery Rule. You can create all of your Delivery Rules in the Gentran Application Mailbox and set the criteria so that the rule is invoked only for specific Trading Partners, or you can create Delivery Rules for each Trading Partner's mailbox.

**Example 1**

You create a Delivery Rule for a Trading Partner mailbox that is invoked when sending messages to or receive messages from the Gentran Application Mailbox.

**Example 2**

You create Delivery Rules on the Gentran Application Mailbox. When defining the criteria for the Delivery Rule you specify that the rule is invoked when sending messages to, or receiving messages from a specific Trading Partner.

---

**Procedure** Use this procedure to associate a Delivery Rule with a mailbox.

Step	Action
1	Start the <b>Mailbox Server Manager</b> .
2	Double-click the <b>Mailboxes</b> folder icon to display the mailboxes.
3	Select the mailbox to which you want to add a Delivery Rule.
4	Right-click, and select <b>Properties</b> .  <b>System Response</b> The system displays the Mailbox Properties dialog box.
5	Select the <b>Delivery Rules</b> tab.
6	Click <b>New</b> to create a new Delivery Rule.  <b>System Response</b> The system displays the Edit Delivery Rule dialog box.

(Continued on next page)

<b>(Contd) Step</b>	<b>Action</b>	
7	Enter a unique name in the Rule name box.	
8	Use this table to determine your next step.	
	<b>IF you want to...</b>	<b>THEN select...</b>
	run this rule when sending a message from this mailbox to another mailbox,	<b>sending</b> from the Run this rule when list.
run this rule when receiving a message from another mailbox,	<b>receiving</b> from the Run this rule when list.	
9	Use this table to determine your next step.	
	<b>IF you run this rule for...</b>	<b>THEN...</b>
	for a specific mailbox,	continue with <b>Step 10</b> .
all mailboxes,	proceed to <b>Step 11</b> .	
10	Use this table to determine your next step.	
	<b>IF you want to...</b>	<b>THEN select...</b>
	run this rule on a message sent or received by a specific mailbox,	<b>is</b> from the If the sender is list.
run this rule on all messages but exclude those sent or received by a specific mailbox,	<b>is not</b> from the If the sender is list.	
11	Use this table to determine your next step.	
	<b>IF you want to run this rule...</b>	<b>THEN...</b>
	only for a specific email address on the mailbox,	Enter the email address in the box to the right of the If the sender is list, and select a mailbox from the At list.
for all email addresses,	Leave the box to the right of the If the sender box blank. Proceed to the next step.  (Continued on next page)	

<b>(Contd) Step</b>	<b>Action</b>	
12	Use this table to determine your next step.	
	<b>IF you want to run this rule...</b>	<b>THEN...</b>
	on all messages in a specific mailbox,	select the desired mailbox from the At list.
	on all messages,	leave this field blank.
13	Use this table to determine your next step.	
	<b>IF you want to run this rule...</b>	<b>THEN...</b>
	on a specific content type,	enter a content type in the If the content type is box.
	on all content types,	leave this field blank.
14	Select a Delivery Agent.  <b>Note</b> The EXE Delivery Agent and the Xprocess DLL Agent are provided with Gentran:Server.	
15	Enter the command line parameters to pass to the delivery agent when running the rule.	
16	Click <b>OK</b> to save the rule and return to the Delivery Rules tab of the Mailbox Properties dialog box.	
17	Click <b>OK</b> to save your changes and to exit the dialog box.	

## How to Set the Processing Order

---

**Introduction** When you have multiple Delivery Rules associated with a mailbox, you can set the order in which the system processes the Delivery Rules.

---

**Procedure** Use this procedure to set the order in which a delivery agent processes Delivery Rules.

Step	Action
1	Open the <b>Mailbox Server Manager</b> .
2	Expand the <b>Mailboxes</b> folder icon to display the mailboxes.
3	Select the mailbox that is associated with the Delivery Rules.
4	Right-click, and select <b>Properties</b> . <b>System Response</b> The system displays the Mailbox Properties dialog box.
5	Select the <b>Delivery Rules</b> tab.
6	Select a Delivery Rule that you want to move in the list, and then click <b>Move up</b> or <b>Move down</b> . <b>System Response</b> The system changes the Delivery Rule's position in the list.
7	Repeat <b>Step 6</b> until the list is in the order that you require.
8	Click <b>OK</b> to save your changes and to exit the dialog box.

---



## How to Edit a Delivery Rule

**Introduction** This section describes how to edit a Delivery Rule.

**Procedure** Use this procedure to edit a Delivery Rule.

Step	Action
1	Open the <b>Mailbox Server Manager</b> .
2	Double-click the <b>Mailboxes</b> folder icon to display the mailboxes.
3	Select the mailbox that is associated with the Delivery Rule.
4	Right-click, and select <b>Properties</b> . <b>System Response</b> The system displays the Mailbox Properties dialog box.
5	Select the <b>Delivery Rules</b> tab. <b>System Response</b> The system displays the Delivery Rules for this mailbox.
6	Select the Delivery Rule you want to edit, and then click <b>Edit</b> . <b>System Response</b> The system displays the Edit Delivery Rule dialog box.
7	Modify the options on the dialog box.
8	Click <b>OK</b> to save your changes and return to the Delivery Rules tab of the Mailbox Properties dialog box.
9	Click <b>OK</b> to save your changes and to exit the dialog box.

## How to Delete a Delivery Rule

---

**Introduction** You can delete a Delivery Rule when you no longer need it.

---

**Procedure** Use this procedure to delete a Delivery Rule.

Step	Action
1	Open the <b>Mailbox Server Manager</b> .
2	Double-click the <b>Mailboxes</b> folder icon to display the mailboxes.
3	Select the mailbox that is associated with the Delivery Rule.
4	Right-click, and select <b>Properties</b> . <b>System Response</b> The system displays the Mailbox Properties dialog box.
5	Select the <b>Delivery Rules</b> tab. <b>System Response</b> The system displays the Delivery Rules for this mailbox.
6	Select the Delivery Rule you want to delete, and click <b>Delete</b> . <b>System Response</b> The system deletes the Delivery Rule.
7	Click <b>OK</b> to save your changes and to exit the dialog box.

---

---

## Working With Messages

---

<b>Contents</b>	<ul style="list-style-type: none"> <li>▶ Introduction . . . . . 5 - 1</li> <li><b>Message Filtering . . . . . 5 - 3</b> <ul style="list-style-type: none"> <li>▶ Overview . . . . . 5 - 3</li> </ul> </li> <li><b>Properties . . . . . 5 - 4</b> <ul style="list-style-type: none"> <li>▶ System Browser Filter . . . . . 5 - 4</li> <li>▶ System Browser . . . . . 5 - 6</li> <li>▶ Filter Dialog Box . . . . . 5 - 8</li> <li>▶ Filter Browser . . . . . 5 - 10</li> </ul> </li> <li><b>Procedures . . . . . 5 - 11</b> <ul style="list-style-type: none"> <li>▶ How to View Messages . . . . . 5 - 11</li> <li>▶ How to View Message Attachments . . . . . 5 - 13</li> <li>▶ How to Set Filter Properties for All Mailboxes . . . . . 5 - 14</li> <li>▶ How to Set Filter Properties for a Specific Mailbox . . . . . 5 - 15</li> <li>▶ How to Delete a Mailbox Message . . . . . 5 - 16</li> <li>▶ How to Restore Deleted Messages . . . . . 5 - 17</li> </ul> </li> </ul>
-----------------	--

---

## Introduction

**In this chapter** This chapter describes the Mailbox Server filter functionality, as well as how to perform some common functions associated with mailbox messages.

**Key terms** This table describes key terms used in this chapter.

Term	Description
attachment	An item, such as a document attached to a message.

<b>Term</b>	<b>Description</b>
filter	A feature that enables you to set message display criteria.
Filter Browser	A browser that enables you to view messages matching pre-determined criteria for a selected mailbox's In Box, Out Box, or Trash container.
System Browser	A browser that enables you to view all mailbox messages matching pre-determined criteria.

---

# Message Filtering

## Overview

---

**Introduction** Message filtering enables you select the criteria at which you want messages to display in Mailbox Server.

---

**Purpose** Message filtering limits the number of messages and attachments that the system displays. This makes it easier to locate the messages that you want to track.

**Reference**

See *Tracking Messages*, chapter 7 of this guide, for information on Inbound and Outbound message tracking.

---

**Types of Filters** Mailbox Server features two type of message display filters:

- System wide - Using the System Browser Filter, you can define the criteria by which you want information from multiple mailboxes to display in one browser.
- Individual mailbox level - Using the Filter dialog box, you can define the criteria by which you want information from a single mailbox's In Box, Out Box, or Trash container to display in a browser.

**Reference**

See *Types of Filter Browsers* on page 5 - 3, *System Browser Filter* on page 5 - 4, and *System Browser* on page 5 - 6 for more information.

---

**Types of Filter Browsers** Mailbox Server features two types of filter browsers. The types of filter browsers are:

- System Browser - Enables you to display message information for multiple mailbox messages. The information that displays is based on the criteria defined in the System Browser Filter dialog box.
- Filter browser - Enables you to display message information for a single mailbox's In Box, Out Box, or Trash container. The information that displays is based on the criteria defined in the Filter dialog box.

**Reference**

See *Types of Filter Browsers* on page 5 - 3, *System Browser Filter* on page 5 - 4, and *System Browser* on page 5 - 6 for more information.

---

**Browser Refresh** The browser Refresh function enables you to repaint the information reflected in an active browser. To refresh a browser's display do either of the following:

- Press **F5**.
- From the Mailbox Server View menu, select **Refresh**.

# Properties

## System Browser Filter

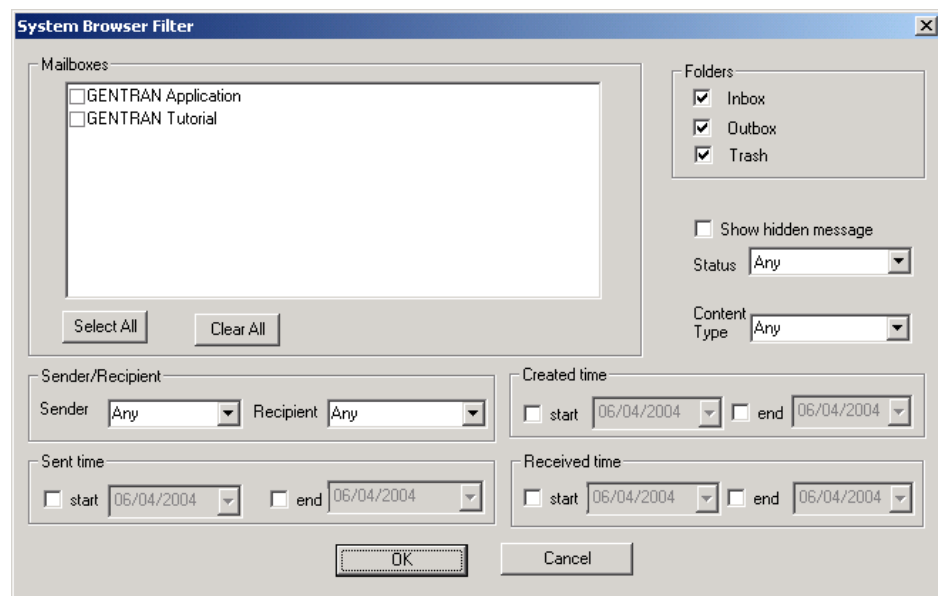
**Introduction** This section describes system-wide message filtering.

**How to access** To access the System Browser Filter dialog box:

- Right-click on the Mailboxes folder icon, and then select the **Open with filter** option.

### System Browser Filter

This is an example of the System Browser Filter dialog box.



### Parts and functions

This table describes the parts of the System Browser Filter dialog box and its functions.

Part	Function
Mailboxes	Specifies each mailbox for which you want to display messages.
Folders	Specifies folders for which you want to display messages.

(Continued on next page)

<b>(Contd) Part</b>	<b>Function</b>
Show hidden messages	Specifies whether you want the browser to display behind-the-scenes (hidden) messages that the system uses to save gateway and mailbox properties.
Status	Specifies the status of messages that you want to display. You can select more than one status value.
Content type	Tells the filter to display messages that have the specified content type. You can type the content type in the box or select from the list.
Sender	Tells the filter to display messages for the specified message sender.
Recipient	Tells the filter to display messages for the specified message recipient.
Created time	<p>Tells the filter to display messages created during the Start or End date specified on the calendar drop-down list.</p> <p>By selecting both the Start and End date options, you can specify a date range for Created messages.</p>
Sent time	<p>Tells the filter to display messages sent during the Start or End date specified on the calendar drop-down list.</p> <p>By selecting both the Start and End date options, you can specify a date range for Sent messages.</p>
Received time	<p>Tells the filter to display messages received during the Start or End date specified in the calendar drop-down list.</p> <p>By selecting both the Start and End date options, you can specify a date range for Received messages.</p>
<b>OK</b>	Saves changes; exits dialog box.
<b>Cancel</b>	Cancels unsaved changes; exits dialog box.

# System Browser

## Introduction

The System Browser displays information based on criteria specified in the System Browser Filter dialog box. This browser enables you to view messages for multiple mailboxes in one window.

## System Browser

This is an example of the System Browser dialog box.

Mailbox	Folder	Id	Src Id	Sub...	Conten...	Conten...	Sender	Re...	Sta...	Time
GENTR...	In Box	7	6	<N...	Applic...	EDI	Mailbox1		Re...	01/10/..
GENTR...	In Box	10	9	<N...	Applic...	EDI	Mailbox1		Re...	01/10/..
GENTR...	In Box	14	13	<N...	Applic...	EDI	Mailbox1		Re...	01/10/..
GENTR...	In Box	17	16	<N...	text	plain	STEPHS		Re...	01/10/..
GENTR...	In Box	20	19	<N...	Applic...	EDI	Mailbox1		Re...	01/10/..
GENTR...	In Box	23	22	<N...	text	plain	STEPHS		Re...	01/10/..
GENTR...	In Box	25	24	<N...	text	plain	Petzon...		Re...	01/10/..
GENTR...	In Box	29	28	<N...	text	plain	STEPHS		Re...	01/10/..
GENTR...	In Box	31	30	<N...	text	plain	STEPHS		Re...	01/10/..
GENTR...	Out ...	32		<N...	text	plain		GE...	Se...	01/10/..
GENTR...	In Box	8	6	<N...	Applic...	EDI	Mailbox1		Un...	01/10/..
GENTR...	In Box	11	9	<N...	Applic...	EDI	Mailbox1		Un...	01/10/..
GENTR...	In Box	15	13	<N...	Applic...	EDI	Mailbox1		Un...	01/10/..
GENTR...	In Box	21	19	<N...	Applic...	EDI	Mailbox1		Un...	01/10/..
GENTR...	In Box	26	24	<N...	text	plain	Petzon...		Un...	01/10/..
GENTR...	In Box	33	32	<N...	text	plain	GENT...		Un...	01/10/..
Mailbox1	Out ...	6		<N...	Applic...	EDI		GE...	Sent	01/10/..
Mailbox1	Out ...	9		<N...	Applic...	EDI		GE...	Sent	01/10/..
Mailbox1	Out ...	13		<N...	Applic...	EDI		GE...	Sent	01/10/..
Mailbox1	Out ...	19		<N...	Applic...	EDI		GE...	Sent	01/10/..

## Parts and functions

This table describes the parts of the System Browser dialog box and its functions.

Part	Function
Mailbox	Displays Mailbox information based on criteria specified in the System Browser Filter.
Folder	Displays mailbox folder information based on criteria specified in the System Browser Filter.
ID	Lists the message ID assigned to the message when this mailbox received it.
Src ID	Lists the message ID assigned in the mailbox that sent the message.
Subject	Displays the Subject of the specified message.
Content type	Displays content type information based on criteria specified in the System Browser Filter.

(Continued on next page)



<b>(Contd) Part</b>	<b>Function</b>
Content Sub type	Displays content subtype information based on criteria specified in the System Browser Filter.
Sender	Displays Sender information based on criteria specified in the System Browser Filter.
Recipient	Displays Recipient information based on criteria specified in the System Browser Filter.
Status	Displays message status based on criteria specified in the System Browser Filter.
Time	Displays the time at which a message was created, sent or received based on criteria specified in the System Browser folder.

---

## Filter Dialog Box

**Introduction** This section describes the Mailbox Server Filter dialog box. This dialog box is used to specify how you want a mailbox's In Box, Out Box, or Trash container contents to display in Mailbox Server.

**How to access** To access the Filter dialog box, do one of the following:

- Select the **Message Filter** icon from the Mailbox Server Main Toolbar
- Right-click a Mailbox's In Box , Out Box or Trash container, and then select the **Open with filter** option.

**Filter dialog box** This is an example of the Filter dialog box.

**Parts and functions** This table describes the parts of the Filter dialog box and its functions.

Part	Function
Status	Specifies the status of messages that you want to display. You can select more than one status value.
Content type	Tells the filter to display messages that have the specified content type. You can type the content type in the box or select from the list.  (Continued on next page)

<b>Part</b>	<b>Function</b>
Sender	Tells the filter to display messages for the specified message sender.
Recipient	Tells the filter to display messages for the specified message recipient.
Created time	Tells the filter to display messages created during the Start or End date specified on the calendar drop-down list.  By selecting both the Start and End date options, you can specify a date range for Created messages.
Sent time	Tells the filter to display messages sent during the Start or End date specified on the calendar drop-down list.  By selecting both the Start and End date options, you can specify a date range for Sent messages.
Received time	Tells the filter to display messages received during the Start or End date specified on the calendar drop-down list.  By selecting both the Start and End date options, you can specify a date range for Received messages.
Show hidden messages	Specifies whether you want the browser to display behind-the-scenes (hidden) messages that the system uses to save gateway and mailbox properties.
<b>OK</b>	Saves changes; exits dialog box.
<b>Cancel</b>	Cancels unsaved changes; exits dialog box.

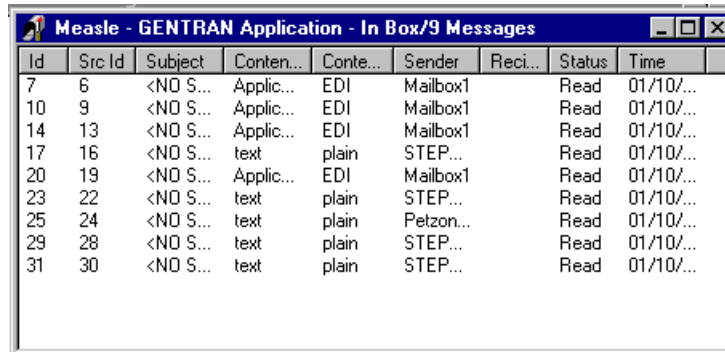
## Filter Browser

### Introduction

The Filter Browser displays messages based on criteria specified in the Filter dialog box. This browser enables you to view messages for a specific mailbox's In Box, Out Box, or Trash container.

### Filter Browser dialog box

This is an example of the Filter Browser dialog box.



Id	Src Id	Subject	Conten...	Conte...	Sender	Reci..	Status	Time
7	6	<NO S...	Applic...	EDI	Mailbox1		Read	01/10/...
10	9	<NO S...	Applic...	EDI	Mailbox1		Read	01/10/...
14	13	<NO S...	Applic...	EDI	Mailbox1		Read	01/10/...
17	16	<NO S...	text	plain	STEP...		Read	01/10/...
20	19	<NO S...	Applic...	EDI	Mailbox1		Read	01/10/...
23	22	<NO S...	text	plain	STEP...		Read	01/10/...
25	24	<NO S...	text	plain	Petzon...		Read	01/10/...
29	28	<NO S...	text	plain	STEP...		Read	01/10/...
31	30	<NO S...	text	plain	STEP...		Read	01/10/...

### Parts and functions

This table describes the parts of the Filter dialog box and its functions.

Part	Function
ID	Lists the message ID assigned to the message when this mailbox received it.
Src ID	Lists the message ID assigned in the mailbox that sent the message.
Subject	Displays the Subject of the specified message.
Content type	Displays content type information based on criteria specified in the Filter dialog box.
Content Subtype	Displays content subtype information based on criteria specified in the Filter dialog box.
Sender	Displays Sender information based on criteria specified in the Filter dialog box.
Recipient	Displays Recipient information based on criteria specified in the Filter dialog box.
Status	Displays message status based on criteria specified in the Filter dialog box.
Time	Displays the time at which a message was created, sent or received based on criteria specified in the Filter dialog box.

## Procedures

### How to View Messages

#### Introduction

This topic describes how to:

- view the messages in a mailbox's In Box, Out Box, or Trash container.
- work with the message, recipient, and attachment panes.
- update the information in the display.

#### Procedure

Use this procedure to view the contents of a mailbox's In Box, Out Box, or Trash container.

Step	Action
1	Open the <b>Mailbox Server Manager</b> .
2	Expand the <b>Mailboxes</b> folder.  <b>Note</b> If you have more than 500 mailboxes on your server, the system displays a message stating that the mailbox-loading process may be lengthy and inquires if you want to open only a single mailbox. If you want to enter single mailbox mode, click <b>OK</b> and select the mailbox you want to open. If you want to view all mailboxes, click <b>Cancel</b> and the mailboxes will load (this may take a few minutes).
3	Expand the mailbox that you want to view.
4	Select the In Box, Out Box, or Trash container where the message that you want to view resides.
5	Do you want to filter the display? <ul style="list-style-type: none"> <li>• If <i>yes</i>, right-click and select <b>Open with Filter</b> from the menu. Set the appropriate filter values. Click <b>OK</b>.</li> </ul> <b>Reference</b> See <i>How to Set Filter Properties for a Specific Mailbox</i> on page 5 - 15 for more information. <ul style="list-style-type: none"> <li>• If <i>no</i>, right-click and select <b>Open</b> from the menu.</li> </ul> <b>System Response</b> The system lists the messages that are currently in the In Box, Out Box, or Trash container in the top pane on the right side of the window.  <div style="text-align: right; color: #6aa84f;">(Continued on next page)</div>

<b>(Contd) Step</b>	<b>Action</b>	
6	Use this table to determine your next step.	
	<b>IF you want to...</b>	<b>THEN...</b>
	display recipient and attachment information for a message,	Double-click the message from the message pane. The system displays the recipient information in the recipient (middle) pane and the attachment information in the attachment (bottom) pane.
	filter the display to limit the types of messages that appear,	See <i>How to Set Filter Properties for a Specific Mailbox</i> on page 5 - 15 for more information.
	update the information displayed in the queue panes,	From the View menu, select <b>Refresh</b> .
	delete a message,	See <i>How to Delete a Mailbox Message</i> on page 5 - 16 for more information.

## How to View Message Attachments

**Introduction** This section describes how to view message attachments.

**Procedure** Use this procedure to view the content of a message attachment.

Step	Action	
1	Start the <b>Mailbox Server Manager</b> .	
2	Open the Trading Partner's mailbox.	
3	Double-click the Trading Partner's <b>Out Box</b> icon.  <b>System Response</b> The system displays the Out Box viewer.	
4	Double-click the Message ID in the Out Box viewer.  <b>System Response</b> The system displays the message viewer.	
5	Select the Attachment ID, and click <b>View</b> .  <b>System Response</b> The system displays the attachment viewer.	
6	Use this decision table to determine your next step.	
	<b>IF...</b>	<b>THEN...</b>
	The MIME content type of the file you are viewing is Application/EDI or a text/ content type  <b>Note</b> Ensure that notepad.exe is entered into the viewer box.	Select this viewer, and click <b>OK</b> .
The MIME content type of the file you are viewing is not Application/EDI or text  <b>Note</b> If the file type is not a registered MIME type, you will not be able to view the attachment.	Select the viewer registered with Windows for this file type, and click <b>OK</b> .	

## How to Set Filter Properties for All Mailboxes

---

**Introduction** This topic describes how to use the System Browser Filter to set filter values for all mailboxes.

---

**Procedure** Use this procedure to set filter values for all mailboxes.

Step	Action
1	Select the <b>Mailboxes</b> folder.
2	Right-click, and select <b>Open with filter</b> from the menu. <b>System Response</b> The system displays the System Browser Filter dialog box.
3	Select the values you want to use for the message filter.
4	Click <b>OK</b> to save the filter values and to exit the dialog box. <b>Note</b> The title bar of each mailbox that has a filter applied will specify “Filter Applied.”

---



# How to Set Filter Properties for a Specific Mailbox

## Introduction

This topic describes how to set filter properties for a specific mailbox's In Box, Out Box, or Trash container.

## Setting the filter values

Use this procedure to set the values you want the filter to use.

Step	Action
1	Expand the <b>Mailboxes</b> folder.
2	Expand the mailbox for which you want to set filter values.
3	Highlight the appropriate In Box, Out Box, or Trash container for which you want to set filter values.
4	Right-click, and select <b>Open with filter</b> from the menu. <b>System Response</b> The system displays the Filter dialog box.
5	Select the values you want to use for the message filter.
6	Click <b>OK</b> . <b>Note</b> The title bar of each mailbox that has a filter applied will specify "Filter Applied."

## How to Delete a Mailbox Message

---

**Introduction** You can delete messages from a mailbox's In Box, Out Box, or Trash container.

---

**What happens to deleted messages?** When you delete messages from the In Box or the Out Box, the system puts the deleted messages into the mailbox's Trash container.

When you delete a message from the Trash container, the system removes the message permanently. You cannot recover it.

---

**Procedure** Use this procedure to delete a message from a mailbox's In Box, Out Box, or Trash container.

Step	Action
1	Open the In Box, Out Box or Trash container that contains the message that you want to delete.
2	Select the message from the messages pane.
3	Right-click, and select <b>Delete</b> from the menu.  <b>System Response</b> The system displays a dialog asking whether you want to delete the selected item.
4	Click <b>Yes</b> .
5	From the View menu, select <b>Refresh</b> to update the information that the system displays in the title bar.

---

## How to Restore Deleted Messages

**Introduction** The Restore function enables you to move a deleted message from a mailbox's Trash container back to the In Box or Out Box.

**Note**

You cannot restore a message that has been deleted from the Trash container.

**Procedure** Use this procedure to restore a deleted message.

Step	Action
1	Open the <b>Trash</b> container that contains the message you want to restore.
2	Select the message from the messages pane.
3	Right-click, and select <b>Restore</b> from the menu. <b>System Response</b> The system displays a dialog asking whether you want to restore the selected item.
4	Click <b>Yes</b> . <b>System Response</b> The system restores the message to the appropriate In Box or Out Box.
5	From the View menu, select <b>Refresh</b> to update the information that the system displays in the Trash container title bar.
6	Verify that the message has been restored to the In Box or Out Box.



---

# Mailbox Server Messages

---

## Contents

- ▶ Overview . . . . . 6 - 2
  - ▶ Error Message Handling . . . . . 6 - 3
  - ▶ Interactive Messages . . . . . 6 - 4
-

## Overview

### In this chapter

This chapter describes the messages generated by Mailbox Server. Messages you receive while working with Mailbox Server are generated by the following components:

- Gentrans:Server Communications Manager (CommMgr)
- Mailbox Server Manager
- Mailbox client
- Mailbox Server gateways.

If you are working with the Communications subsystem through the Mailbox Server Manager, the messages you receive are displayed interactively through the user interface. If you are using Process Control to process messages through the Communications subsystem, then any messages that are generated are sent to the Gentrans:Server Audit Log.

### Reference

See *Error Message Handling* on page 6 - 3 for more information about how messages are generated for Mailbox Server.

### Reference

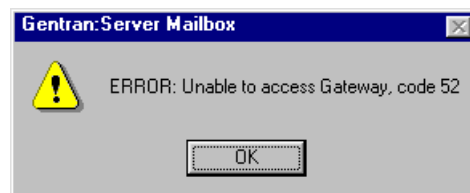
Error Messages for optional gateways are included in the optional gateway's associated Configuration Guide.

### Interactive message format

Messages that you receive while you are working in the Mailbox Server Manager are displayed interactively in a message box.

### Example

This is an example of an interactive message.



# Error Message Handling

---

## Introduction

Information and error messages that are generated by Mailbox Server are routed and stored in the follow log files:

- Gentran:Server audit log
  - Gentran:Server communications log (accessed through the Mailbox Server Manager)
  - Microsoft Windows application event log
- 

## Gentran Audit Log

The Gentran Audit Log contains application messages relating to user actions, such as opening or closing browsers, initiating or invoking a communications session, or importing data. Messages generated on behalf of the communications subsystem are prefixed with “CommMgr” to indicate that the message was associated with the Gentran:Server Communication Manager.

Using the Audit Notification System you can set up the system to alert you whenever the system generates a designated audit message.

To access the Gentran Audit Log from Mailbox Server, press the Audit Log icon on the Mailbox Server main toolbar.

### Reference

See Using the Audit Notification System in the *Gentran:Server for Windows Administration Guide* for information on the Gentran Audit Log.

---

## Gentran:Server comm log

The Gentran:Server communications log contains all messages that are generated during a communications session. This log is available from the Sessions tab of the Gentran:Server Communications Gateway properties dialog box.

---

## Windows Application Event log

The Windows application event log contains system and database messages. These messages include information regarding database connections and permissions, resources, and messages relating to Gentran:Server communications sessions. You use the Windows Event Viewer from the Windows Administrative tools to view the event log.

### Reference

See your Microsoft Windows documentation for information on the Windows application event log and the Event Viewer.

---

## Interactive Messages

**Introduction** This topic provides you with the interactive messages you may receive while working with Mailbox Server communications.

**Note**

These messages may also be displayed in the Gentran Audit Log. Each message that is sent to the Audit Log is prefixed by “CommMgr.”

**Messages** This table describes the interactive messages generated by Mailbox Server.

Message Number	Message	Description
0	success	The function was successful.
1	partial success	The function was successful overall, however some errors were encountered. This may happen if a message is sent where some recipients are unreachable.
2	invalid session	An invalid session ID was supplied to the function. This is usually the result of not calling Logon.
3	access denied	The function could not complete because either the caller or the Mailbox Service did not have permission to access a necessary resource.
4	database error	An ODBC error occurred during processing of the function.
5	database not available	The function could not complete because no database connections were available to service it.
6	invalid mailbox	An invalid mailbox ID, name, or email address was supplied to the function.
7	invalid list	An invalid list ID or name was supplied to the function.
8	invalid message	An invalid message ID was supplied to the function.
9	invalid recipient	The recipient ID supplied to the function was invalid (it was neither a mailbox id or a list ID).
10	invalid recipient type	An invalid recipient type was supplied to the function.
11	invalid attachment	An invalid attachment ID was supplied to the function.

(Continued on next page)



<b>(Contd) Message Number</b>	<b>Message</b>	<b>Description</b>
12	error copying attachment	The function encountered an error while making a copy of an attachment.
13	invalid folder	An invalid folder ID was supplied to the function.
14	invalid sender	An invalid sender ID was supplied to the function.
15	invalid content type	An invalid content-type or sub-type was supplied to the function.
16	spooler delivering	A request was made for the spooler to start delivering, when in fact it was already delivering.
17	spooler not delivering	A request was made for the spooler to stop delivering, when in fact it was not delivering anyway.
18	spooler cannot deliver	The spooler was unable to start delivering messages.
19	message not ready	A request was made to send a message which is not ready to be sent (it may be missing recipients or have no sender ID).
20	no message recipients	A message could not be delivered because there were no recipients.
21	insufficient buffer	The function requires a larger buffer.
22	invalid acl	An invalid Access Control List was supplied to the function.
23	security descriptor error	Mailbox Server was unable to create or access a security descriptor.
24	no acl	No Access Control List is available.
25	impersonation error	Mailbox Server was unable to assume the identity of the calling application and consequently was unable to verify the caller's access rights.
26	access check error	Mailbox Server encountered an error validating access rights.
27	network error	A network error was encountered while executing the function. This is usually the result of the Mailbox Server shutting down while a client which was connected is still running.
28	no connection	An attempt was made to call a function before a connection was successfully established to the Mailbox Server.
29	user cancel	The user cancelled the dialog.

(Continued on next page)

<b>(Contd) Message Number</b>	<b>Message</b>	<b>Description</b>
30	connect failed	An error was encountered connecting to the Mailbox Server. This is usually because the server is not running.
31	menace not connected	A request was made to disconnect or setup notifications for a session with no associated Menace.
32	menace connect failed	The Mailbox Server was unable to connect to the requested Menace.
33	menace invalid mailbox	A request was made to cancel mailbox notifications for a session which has no Menace associated with that Mailbox.
34	invalid stream	An invalid stream ID was supplied to the function.
35	stream open failed	An error occurred opening a stream onto an attachment.
36	stream error	An error occurred while working with a stream.
37	attachment is shared	This error is obsolete.
38	gateway not loaded	The function attempted to invoke a gateway function on a gateway which failed to load when the Mailbox Server was started.
39	gateway not found	The function attempted to invoke a gateway function on a gateway mailbox which uses a gateway that failed to load when the Mailbox Server was started.
41	out of memory	The Mailbox Server was unable to allocate memory from the operating system.
42	thread token error	The Mailbox Server was unable to obtain necessary information about the thread.
43	thread model already set	An attempt was made to reinitialize the UI Library with a different threading model.
44	invalid thread model	An attempt was made to initialize the UI Library with an invalid threading model.
45	not supported	The requested function was not supported.
46	invalid clapi module	The CLAPI library was unable to connect to the CLAPI server interface using the supplied module handle.

(Continued on next page)

<b>(Contd) Message Number</b>	<b>Message</b>	<b>Description</b>
47	invalid dynalink	An attempt was made to call a function in the CLAPI library which was not successfully connected to the CLAPI server interface.
48	invalid callback	A NULL callback function pointer was supplied.
49	use default properties	No properties were available. You should use reasonable defaults.
50	gateway property error	A gateway encountered an error retrieving its properties.
51	could not create timer	A system timer could not be created. This condition occurs on versions of Windows prior to 4.0.
52	invalid gateway	An invalid gateway name was supplied.
53	file error	The Mailbox Server encountered a file system error.
54	sid error	The Mailbox Server encountered an error in a Security ID.
55	delivery agent not loaded	An attempt was made to call a function in a Delivery Agent which was not loaded when the Mailbox Server was started.
56	invalid delivery agent	An invalid delivery agent was supplied to the function.
57	invalid delivery rule	An invalid delivery rule was supplied to the function.
58	delivery agent handled message	The delivery agent handled the message fully, no more processing is required.
59	delivery agent param error	The delivery agent encountered an error in its parameters. This is usually caused by an incorrect command line in the delivery rule.
60	delivery agent error	The delivery agent encountered an error.
71	message store does not exist	The store directory containing mailbox configurations is missing.
1000	gateway error	The gateway encountered an error.
1001	mailbox not supported by gateway	The gateway was requested to perform a function using a mailbox which is not configured to use that gateway.
1019	The File System Gateway failed to initialize the collection process.	Verify all collection folders are valid and review Windows Application Event viewer for possible causes



# Glossary

---

**Advanced Data Distribution**

An optional gateway component that allows your Trading Partners to initiate a communications session. Unlike a standard communications session where Gentran:Server contacts a VAN or Trading Partner, Advanced Data Distribution is passive, waiting for a Trading Partner to contact you.

---

**Attachment**

The business documents that you exchange with your Trading Partners. These documents may contain the EDI (Electronic Data Interchange) information that is generated from your business systems. Mailbox Server stores this information as an attachment to the message.

---

**Communications controller**

A computer that controls communications sessions.

---

**Communications scripts**

Communications processes are controlled by Mailbox Server. The basic Mailbox Server that is delivered as part of Gentran:Server for Windows provides you with the ability to communicate with your Trading Partners.

---

**Delivery agents**

An agent that runs external programs on the messages you send and receive. When you installed Mailbox Server the delivery agents “EXE agent” and “Xprocess DLL” were installed for you.

---

**Delivery rule**

A list of criteria by which processing of messages is performed.

---

**Distribution lists**

A global list of Mailbox Server mailboxes. A distribution list can be used by all mailbox users. Instead of addressing messages to each individual, you can group the individual mailboxes into a distribution list. When you configure a gateway mailbox, you may define the distribution list as the recipient.

---

**EXE Delivery Agent**

A delivery agent that is provided with Mailbox Server that controls the launch of executable programs to be run against messages that are routed by Mailbox Server. You use these executable programs to further process messages as they are being sent or received within Mailbox Server. To launch these executable programs you create a Delivery Rule for a specific mailbox.

---

---

<b>File System Gateway</b>	Software that enables messages to be routed to or from designated folders on your file system. You can also use the File System Gateway to test Gentran:Server to ensure that it is processing messages correctly.
<b>filter</b>	A Mailbox Server feature that enables you to set message display criteria.
<b>Filter Browser</b>	A browser that enables you to view messages matching pre-determined criteria for a selected mailbox's In Box, Out Box, or Trash container.
<b>Gateways</b>	Software components that control the transmission of messages between two parties. The gateway is responsible for using the correct protocols to transfer messages between the sender and receiver.
<b>Gateway mailboxes</b>	Mailboxes that you create that are associated with a gateway. The properties you define for each gateway mailbox determines how messages are transferred to your Trading Partners. <b>See also</b> Mailboxes and Non-Gateway Mailboxes.
<b>Gentran audit log</b>	A log that contains application messages relating to user actions, such as opening or closing browsers, initiating or invoking a communications session, or importing data. Messages generated on behalf of the communications subsystem are prefixed with "CommMgr" to indicate that the message was associated with the Gentran:Server Communication Manager.
<b>Gentran:Server comm log</b>	A log that contains all messages that are generated during a communications session. This log is available from the Sessions tab of the Gentran:Server Communications gateway properties dialog box.
<b>Gentran:Server Communications Gateway</b>	An optional gateway that is used to transfer messages to and from Mailbox Server using a variety of telecommunications protocols, such as: <ul style="list-style-type: none"><li>• Asynchronous</li><li>• Bisynchronous</li><li>• TCP/IP (Transmission Control Protocol / Internet Protocol)</li><li>• FTP (File Transfer Protocol)</li><li>• WS_FTP Pro File Transfer Program</li><li>• ISDN (Integrated Services Digital Network).</li><li>• EICON X.25T</li></ul>

---

---

**Gentran:Server Communications Manager**

Controls the transfer of messages and attachments between Gentran:Server and the Gentran Application mailbox. The Communications Manager (CommMgr) is part of the Gentran:Server Executive service that resides on the Primary System Controller.

---

**Mailboxes**

Mailboxes store messages that are being transferred between mail recipients. Like a mailbox for paper mail, the messages are stored in the mailbox until they are transferred to the addressee.

There are two types of Gentran:Server mailboxes:

- non-gateway mailboxes
- gateway mailboxes

**See also**

Gateway Mailboxes and Non-gateway Mailboxes

---

**Mailbox Server Manager**

A tool that enables you to administer and maintain day-to-day Mailbox Server activities. This tool allows you to add and remove Mailbox components such as mailbox servers, mailboxes, and gateways.

---

**Mailbox Server system**

The communications system used to transfer messages between you and your Trading Partners. This system allows you to transfer messages using a variety of communications protocols.

The Mailbox Server system has the following components:

- mailboxes
- distribution lists
- delivery agents
- gateways.

**See also**

Delivery agents, Distribution lists, Gateways, and Mailboxes

---

**MAPI**

Message Application Programming Interface.

---

**MAPI gateway**

An optional gateway that links the Mailbox Server mailboxes with pre-defined MAPI message stores.

---

---

<b>Message</b>	<p>A general term for a piece of information, such as an e-mail, voice mail, or a simple text message. Messages that are transferred within Mailbox Server are specific types of messages that typically contain the data contained in your business documents. Each message has the following properties:</p> <ul style="list-style-type: none"><li>• Message ID—uniquely identifies each message</li><li>• Src ID - Lists the message ID assigned in the mailbox that sent the message.</li><li>• Subject—provides an introduction into the content of the message</li><li>• Content type and subtype—describes the type of information contained in the message or attachment</li><li>• From—describes the author</li><li>• Recipient—describes the recipient</li><li>• Status—shows how far the message and attachment have progressed through Mailbox Server.</li><li>• Message body—contains the main content of the message, typically displayed in a plain text format.</li><li>• Attachment—contains additional text or binary data elements (such as the data in your business documents).</li></ul>
<b>Non-Gateway mailboxes</b>	<p>The Gentran Application mailbox created when you installed Gentran:Server. This mailbox is used by Mailbox Server to hold messages that are being transferred between Gentran:Server for Windows and your Trading Partners.</p> <p><b>See also</b> Mailboxes and Gateway Mailboxes.</p>
<b>pool</b>	<p>A collection of communications devices.</p>
<b>Recipient list</b>	<p>A list of mail addresses that is associated with a message. However, File System gateway mailboxes and Gentran:Server Communications gateway mailboxes allow you to set up default recipient lists that are used when messages are sent through the respective gateway. A recipient list can include distribution lists, and primary and secondary recipients.</p>
<b>System Browser</b>	<p>A browser that enables you to view all mailbox messages matching pre-determined criteria.</p>
<b>VATPRINT Utility</b>	<p>An external data processor used to generate Value Added Tax (VAT) Transmission Reports when sending or receiving TRADACOMS or UK EDIFACT data. This report is generated in the format defined by UK Customs and Excise and the UK Article Number Association (ANA). You invoke the VATPRINT utility in the command line of a Delivery Rule.</p>

---