

IBM Sterling Gentran:Server for UNIX

Installation Checklist

Version 6.2



Copyright

This edition applies to the 6.2 Version of IBM® Sterling Gentran:Server® for UNIX and to all subsequent releases and modifications until otherwise indicated in new editions.

Before using this information and the product it supports, read the information in *Notices* on page N-1.

Licensed Materials - Property of IBM

IBM® Sterling Gentran:Server® for UNIX

© Copyright IBM Corp. 1991, 2011. All Rights Reserved.

US Government Users Restricted Rights - Use, duplication or disclosure restricted by GSA ADP Schedule Contract with IBM Corp.

Installation and Setup

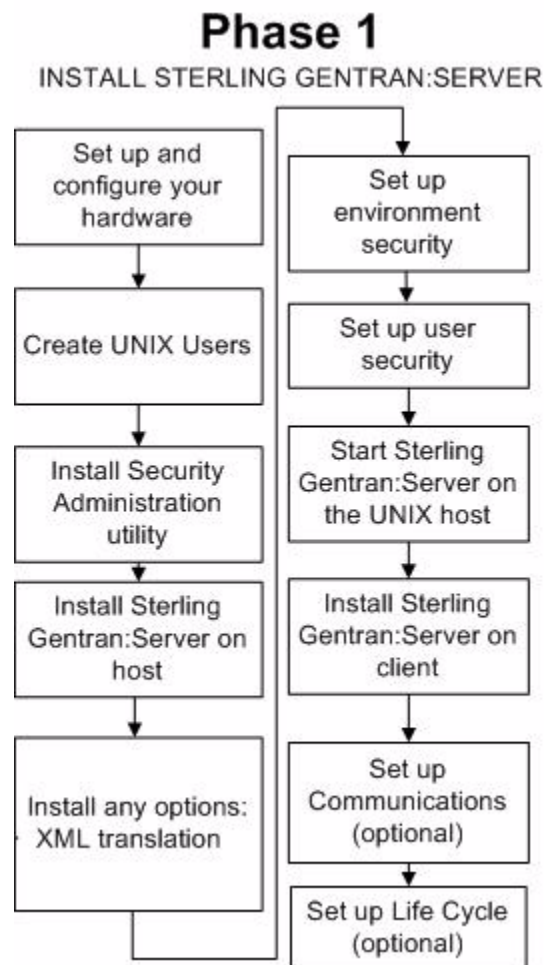
Contents	Overview
	▶ Introduction 2
	▶ Installation Checklist 7

Overview

Introduction

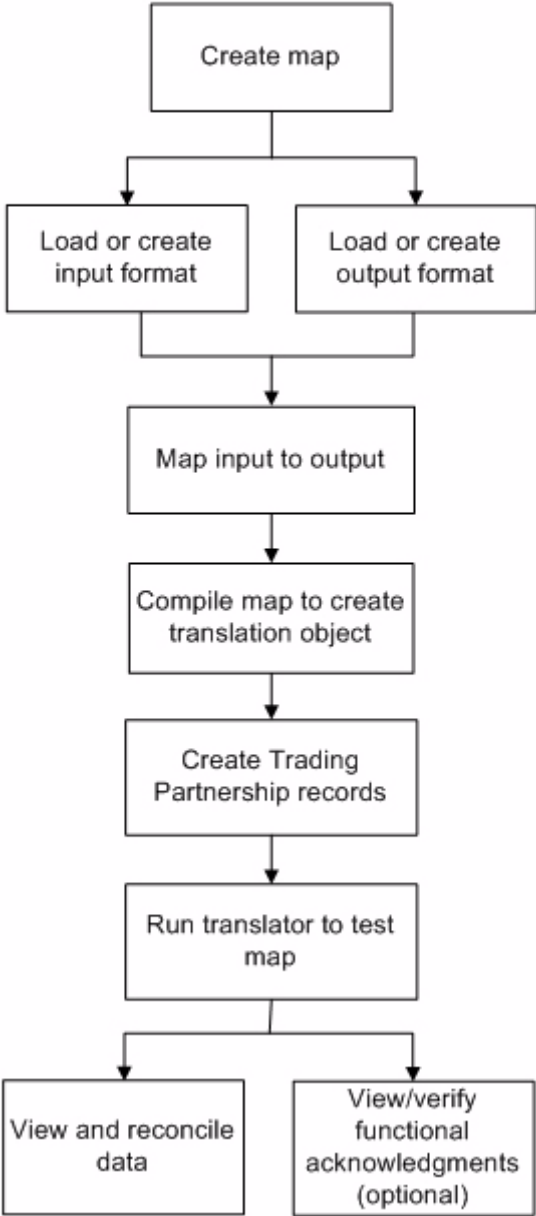
Process The IBM® Sterling Gentran:Server® for UNIX installation and setup process flow can be divided into two phases:

1. Install Sterling Gentran:Server
2. Set up mapping and translation



Phase 2

SET UP MAPPING AND TRANSLATION



Additional Documentation

This table describes additional documentation for Sterling Gentran:Server.

Document	Description
<i>IBM® Sterling Gentran:Server® for UNIX Upgrade and Data Conversion Guide</i>	Instructions for upgrading from previous versions of IBM® Sterling Gentran:Server® for UNIX and IBM® Sterling Gentran:Server® for UNIX - Workstation. Also includes instructions for converting the files that are part of the upgrade.
<i>IBM® Sterling Gentran:Server® for UNIX Installation Checklist</i>	Description of the recommended sequence in which you should install and configure system components.
<i>IBM® Sterling Gentran:Server® for UNIX Getting Started Guide</i>	Instructions for installing the Sterling Gentran:Server software and performing setup tasks, such as setting up security. Instructions for starting and exiting Sterling Gentran:Server and for setting preferences and default values. Also includes instructions for checking files in and out and saving files.
<i>IBM® Sterling Gentran:Server® for UNIX - Workstation Getting Started Guide</i>	Instructions for installing the IBM® Sterling Gentran:Server® for UNIX - Workstation software and performing setup tasks. Instructions for starting and exiting Sterling Gentran:Server and for setting preferences and default values. Also includes instructions for checking files in and out and saving files.
<i>IBM® Sterling Gentran:Server® for UNIX Application Integration User Guide</i>	Instructions for performing mapping and translation tasks using the Sterling Gentran:Server Application Integration system.
<i>IBM® Sterling Gentran:Server® for UNIX HIPAA Compliance and NCPDP User Guide</i>	Instructions for mapping and translating NCPDP files with the Application Integration system.
<i>IBM® Sterling Gentran:Server® for UNIX GENCOD User Guide</i>	Instructions for mapping and translating GENCOD files with the Application Integration system.

Document	Description
<i>IBM® Sterling Gentran:Server® for UNIX VDA User Guide</i>	Instructions for mapping and translating VDA files with the Application Integration system.
<i>IBM® Sterling Gentran:Server® for UNIX Technical Reference Guide</i>	Describes processes, lists command-line commands in alphabetical order, and describes file record layouts and data type formats.
<i>IBM® Sterling Gentran:Server® for UNIX - EC Workbench Data Flow Administration Guide</i>	User instructions for configuring data flows using the Sterling Gentran:Server software.
<i>IBM® Sterling Gentran:Server® for UNIX - Process Control Manager Data Flow Administration Guide</i>	User instructions for configuring data flows using the Sterling Gentran:Server software.
<i>IBM® Sterling Gentran:Server® for UNIX Maintenance and Troubleshooting Guide</i>	Instructions for maintaining your Sterling Gentran:Server installation. Also provides troubleshooting information to help determine the cause and solution of problems that may occur.
<i>IBM® Sterling Gentran:Server® for UNIX - Workstation Maintenance and Troubleshooting Guide</i>	Instructions for maintaining your workstation installation. Also provides troubleshooting information to help determine the cause and solution of problems that may occur.
<i>IBM® Sterling Gentran:Server® for UNIX with ADD User Guide</i>	Instructions for configuring and using the Advanced Data Distribution system.
<i>IBM® Sterling Gentran:Server® for UNIX XML Translation User Guide</i>	Instructions for mapping and translating XML files with the Application Integration system.

Document	Description
<i>IBM® Sterling Gentran:Server® for UNIX with ADD FTP Daemon User Guide</i>	Instructions for configuring and using the FTP Daemon tool with IBM® Sterling Gentran:Server® for UNIX with ADD.
Online Help	Context-sensitive help screens describing the Sterling Gentran:Server dialog boxes and features. Also includes procedures for using the mapping and translation and the data flow administration software.

Specifically, the following documentation provides information on other phases of setting up Sterling Gentran:Server.

- See the *IBM® Sterling Gentran:Server® for UNIX XML Translation User Guide* for setting up optional XML translation.
- See the *IBM® Sterling Gentran:Server® for UNIX Getting Started Guide* for installation instructions for the optional Communications Toolkit.
- See the *IBM® Sterling Gentran:Server® for UNIX Application Integration User Guide* (Application Integration system) for instructions on setting up mapping and translation.

Installation Checklist

Using the Installation Checklist

Before you begin installing Sterling Gentran:Server, complete one copy of this checklist for each EDI environment you will install. During installation, use the completed checklist with the *IBM® Sterling Gentran:Server® for UNIX Getting Started Guide* and the *IBM® Sterling Gentran:Server® for UNIX - Workstation Getting Started Guide* to install the Sterling Gentran:Server software.

Checklist

The following checklist helps you identify and collect the information you need to install Sterling Gentran:Server.

Record the following items:	Done
The IP address and system name (host name) of the host computer that will contain the EDI environment:	
The IP address and system name of the host computer that will contain the Security Administration utility. (This will be the NAMEBROKER):	
The name of the CD-ROM drive you will use to load software onto the UNIX host:	
The complete path to the locations where you will install: <ul style="list-style-type: none"> ▶ The Sterling Gentran:Server UNIX Security Administration utility: ▶ The Sterling Gentran:Server UNIX host software: ▶ The Sterling Gentran:Server Windows client software 	
The UNIX login ID and password for the user who will own the security processes and files. Login: Password:	
The UNIX login ID and password for the EDI user who will own the EDI processes and files. Login: Password:	
Decide whether you want one Security Administration Utility per host or one per environment on the host. You may create directories to contain them now, or let the installation process create them for you.	
The setting to use for the VVTERM environment variable. (This is usually the same as your terminal emulation environment variable, TERM.)	
The path to the vvttermcap file:	

Notices

This information was developed for products and services offered in the U.S.A.

IBM may not offer the products, services, or features discussed in this document in other countries. Consult your local IBM representative for information on the products and services currently available in your area. Any reference to an IBM product, program, or service is not intended to state or imply that only that IBM product, program, or service may be used. Any functionally equivalent product, program, or service that does not infringe any IBM intellectual property right may be used instead. However, it is the user's responsibility to evaluate and verify the operation of any non-IBM product, program, or service.

IBM may have patents or pending patent applications covering subject matter described in this document. The furnishing of this document does not grant you any license to these patents. You can send license inquiries, in writing, to:

IBM Director of Licensing

IBM Corporation

North Castle Drive

Armonk, NY 10504-1785

U.S.A.

For license inquiries regarding double-byte character set (DBCS) information, contact the IBM Intellectual Property Department in your country or send inquiries, in writing, to:

Intellectual Property Licensing

Legal and Intellectual Property Law

IBM Japan Ltd.

1623-14, Shimotsuruma, Yamato-shi

Kanagawa 242-8502 Japan

The following paragraph does not apply to the United Kingdom or any other country where such provisions are inconsistent with local law:

INTERNATIONAL BUSINESS MACHINES CORPORATION PROVIDES THIS PUBLICATION "AS IS" WITHOUT WARRANTY OF ANY KIND, EITHER EXPRESS OR IMPLIED, INCLUDING, BUT NOT LIMITED TO, THE IMPLIED WARRANTIES OF NON-INFRINGEMENT, MERCHANTABILITY OR FITNESS FOR A PARTICULAR PURPOSE. Some states do not allow disclaimer of express or implied warranties in certain transactions, therefore, this statement may not apply to you.

This information could include technical inaccuracies or typographical errors. Changes are periodically made to the information herein; these changes will be incorporated in new editions of the publication. IBM may make improvements and/or changes in the product(s) and/or the program(s) described in this publication at any time without notice.

Any references in this information to non-IBM Web sites are provided for convenience only and do not in any manner serve as an endorsement of those Web sites. The materials at those Web sites are not part of the materials for this IBM product and use of those Web sites is at your own risk.

IBM may use or distribute any of the information you supply in any way it believes appropriate without incurring any obligation to you.

Licensees of this program who wish to have information about it for the purpose of enabling: (i) the exchange of information between independently created programs and other programs (including this one) and (ii) the mutual use of the information which has been exchanged, should contact:

IBM Corporation

J46A/G4

555 Bailey Avenue

San Jose, CA__95141-1003

U.S.A.

Such information may be available, subject to appropriate terms and conditions, including in some cases, payment of a fee.

The licensed program described in this document and all licensed material available for it are provided by IBM under terms of the IBM Customer Agreement, IBM International Program License Agreement or any equivalent agreement between us.

Any performance data contained herein was determined in a controlled environment. Therefore, the results obtained in other operating environments may

vary significantly. Some measurements may have been made on development-level systems and there is no guarantee that these measurements will be the same on generally available systems. Furthermore, some measurements may have been estimated through extrapolation. Actual results may vary. Users of this document should verify the applicable data for their specific environment.

Information concerning non-IBM products was obtained from the suppliers of those products, their published announcements or other publicly available sources. IBM has not tested those products and cannot confirm the accuracy of performance, compatibility or any other claims related to non-IBM products. Questions on the capabilities of non-IBM products should be addressed to the suppliers of those products.

All statements regarding IBM's future direction or intent are subject to change or withdrawal without notice, and represent goals and objectives only.

This information is for planning purposes only. The information herein is subject to change before the products described become available. This information contains examples of data and reports used in daily business operations. To illustrate them as completely as possible, the examples include the names of individuals, companies, brands, and products. All of these names are fictitious and any similarity to the names and addresses used by an actual business enterprise is entirely coincidental.

COPYRIGHT LICENSE:

This information contains sample application programs in source language, which illustrate programming techniques on various operating platforms. You may copy, modify, and distribute these sample programs in any form without payment to IBM, for the purposes of developing, using, marketing or distributing application programs conforming to the application programming interface for the operating platform for which the sample programs are written. These examples have not been thoroughly tested under all conditions. IBM, therefore, cannot guarantee or imply reliability, serviceability, or function of these programs. The sample programs are provided "AS IS", without warranty of any kind. IBM shall not be liable for any damages arising out of your use of the sample programs.

Each copy or any portion of these sample programs or any derivative work, must include a copyright notice as follows:

© IBM 2011. Portions of this code are derived from IBM Corp. Sample Programs.

© Copyright IBM Corp. 2011.

If you are viewing this information softcopy, the photographs and color illustrations may not appear.

Trademarks

IBM, the IBM logo, and ibm.com are trademarks or registered trademarks of International Business Machines Corp., registered in many jurisdictions

worldwide. Other product and service names might be trademarks of IBM or other companies. A current list of IBM trademarks is available on the Web at "[Copyright and trademark information](http://www.ibm.com/legal/copytrade.shtml)" at www.ibm.com/legal/copytrade.shtml.

Adobe, the Adobe logo, PostScript, and the PostScript logo are either registered trademarks or trademarks of Adobe Systems Incorporated in the United States, and/or other countries.

IT Infrastructure Library is a registered trademark of the Central Computer and Telecommunications Agency which is now part of the Office of Government Commerce.

Intel, Intel logo, Intel Inside, Intel Inside logo, Intel Centrino, Intel Centrino logo, Celeron, Intel Xeon, Intel SpeedStep, Itanium, and Pentium are trademarks or registered trademarks of Intel Corporation or its subsidiaries in the United States and other countries.

Linux is a registered trademark of Linus Torvalds in the United States, other countries, or both.

Microsoft, Windows, Windows NT, and the Windows logo are trademarks of Microsoft Corporation in the United States, other countries, or both.

ITIL is a registered trademark, and a registered community trademark of the Office of Government Commerce, and is registered in the U.S. Patent and Trademark Office.

UNIX is a registered trademark of The Open Group in the United States and other countries.

Java and all Java-based trademarks and logos are trademarks or registered trademarks of Oracle and/or its affiliates.

Cell Broadband Engine is a trademark of Sony Computer Entertainment, Inc. in the United States, other countries, or both and is used under license therefrom.

Linear Tape-Open, LTO, the LTO Logo, Ultrium and the Ultrium Logo are trademarks of HP, IBM Corp. and Quantum in the U.S. and other countries.

Connect Control Center®, Connect:Direct®, Connect:Enterprise, Gentran®, Gentran:Basic®, Gentran:Control®, Gentran:Director®, Gentran:Plus®, Gentran:Realtime®, Gentran:Server®, Gentran:Viewpoint®, Sterling Commerce™, Sterling Information Broker®, and Sterling Integrator® are trademarks or registered trademarks of Sterling Commerce, Inc., an IBM Company.

Other company, product, and service names may be trademarks or service marks of others.