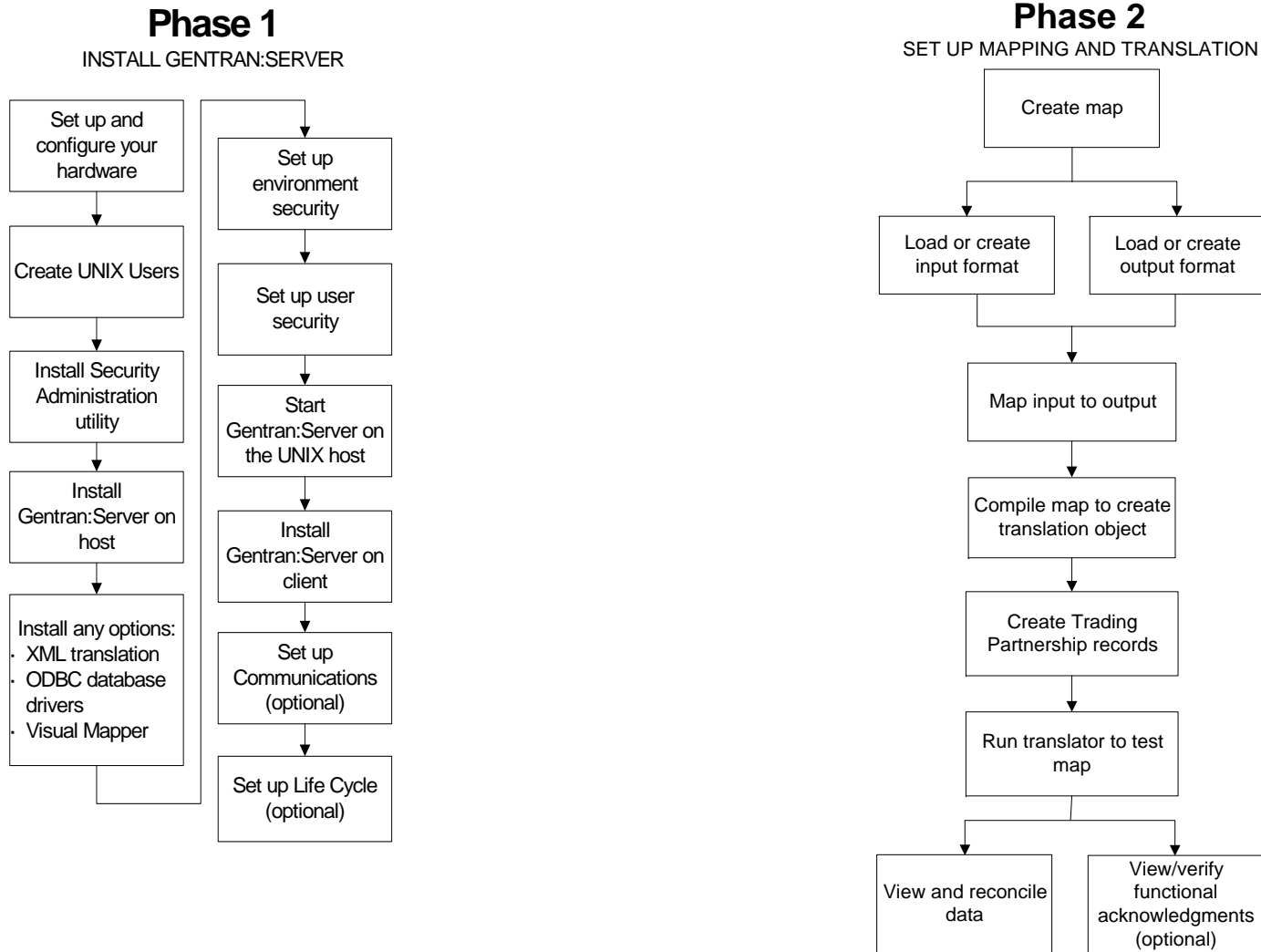


Gentran:Server[®] for UNIX[®] Installation and Setup Process

This illustration shows a detailed flow of the Gentran:Server installation and setup process. The illustration divides the process flow into phases and divides each phase into stages. Arrows indicate the sequence in which the stages should be performed.



Gentran:Server[®] 6.1 Installation Checklist

This checklist helps you identify and collect the information you need to install Gentran:Server for UNIX.

Other Documentation

The following documentation provides information on the other phases of setting up Gentran Server for UNIX.

- *Gentran:Server for UNIX Getting Started Guide* for instructions for setting up the optional Communications Toolkit.
- *XML User's Guide* for instructions for setting up the optional XML translation functions.
- *ODBC Drivers - UNIX Installation Instructions* for installation instructions and the *ODBC User's Guide* for setup instructions for the optional ODBC database drivers.
- *Visual Mapper - UNIX Host Installation Instructions* for installation instructions for the optional Visual Mapper.
- *Application Integration User's Guide* (AI mapper) or the *Mapping and Translation Guide* (Visual Mapper) for instructions for setting up mapping and translation.

Using the Installation Checklist

Before you begin installing Gentran:Server, complete one copy of this checklist for each EDI environment you will install. During installation, use the completed checklist and the *Gentran:Server for UNIX Getting Started Guide* to install the Gentran:Server for UNIX software.

Done	Item
	The IP address and system name (host name) of the host computer that will contain the EDI environment. _____
	The IP address and system name of the host computer that will contain the Security Administration utility. (This will be the NAMEBROKER) _____

(Cont'd) Done	Item
	The name of the CD-ROM drive you will use to load software onto the UNIX host. _____
	The complete path to the locations where you will install: The Gentran:Server UNIX Security Administration utility _____ The Gentran:Server UNIX host software _____ The Gentran:Server Windows client software _____ _____ _____
	The UNIX login ID and password for the user who will own the security processes and files. Login: _____ Password: _____
	The UNIX login ID and password for the EDI user who will own the EDI processes and files. Login: _____ Password: _____

(Cont'd) Done	Item
	Decide whether you want one Security Administration Utility per host or one per environment on the host. _____ You may create directories to contain them now, or let the installation process create them for you.
	Optionally, the serial number for the XML translation option installation. _____
	Optionally, the serial number for the ODBC database driver installation. _____
	On the attached label, find the Gentran:Server product key and license numbers to assign to the client computers. <div style="border: 1px solid black; height: 100px; width: 100%; margin-top: 5px;"></div>
	The setting to use for the VVTERM environment variable. (This is usually the same as your terminal emulation environment variable, TERM.) _____
	The path to the vtermcap file. _____

Gentran:Server is a registered trademark of Sterling Commerce, Inc.
© Copyright 1998-2004
Sterling Commerce, Inc.
ALL RIGHTS RESERVED