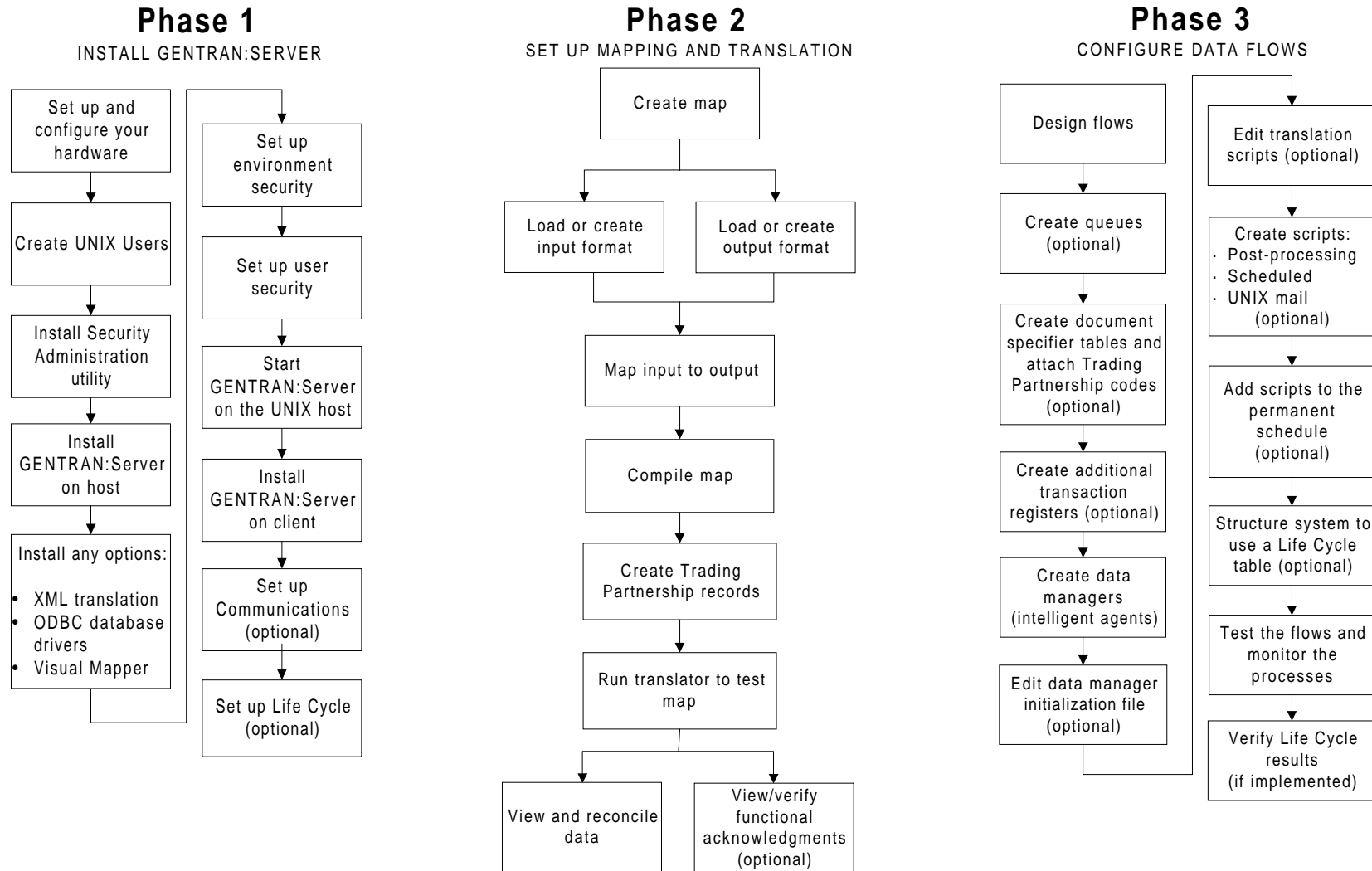


# GENTRAN:Server<sup>®</sup> for UNIX<sup>®</sup> with Process Control Manager Installation and Setup Process

This illustration shows a detailed flow of the GENTRAN:Server installation and setup process. The illustration divides the process flow into phases and divides each phase into stages. Arrows indicate the sequence in which the stages should be performed.



# GENTRAN:Server® 6.0 Installation Checklist

This checklist helps you identify and collect the information you need to install GENTRAN:Server for UNIX with Process Control Manager.

## Other Documentation

The following documentation provides information on the other phases of setting up GENTRAN:Server for UNIX with Process Control Manager.

- *XML User's Guide* for setting up optional XML translation.
- *ODBC Drivers - UNIX Installation Instructions* for installation instructions and the *ODBC Driver Setup Guide* for setup instructions for the optional ODBC database drivers.
- *Visual Mapper - UNIX Host Installation Instructions* for installation instructions for the optional Visual Mapper.
- See the *Application Integration User's Guide* (Application Integration mapper) or the *Mapping and Translation Guide* (Visual Mapper) for instructions for setting up mapping and translation.
- See the *Data Flow Administration Guide* for instructions for configuring flows.

## Using the Installation Checklist

Before you begin installing GENTRAN:Server, complete one copy of this checklist for each EDI environment you will install. During installation, use the completed checklist and the *GENTRAN:Server for UNIX Installation Guide* to install the GENTRAN:Server for UNIX software.

Done	Item
	The IP address and system name (host name) of the host computer that will contain the EDI environment. _____
	The IP address and system name of the host computer that will contain the Security Administration Utility. (This will be the NAMEBROKER) _____

(Cont'd) Done	Item
	The name of the CD-ROM drive you will use to load software onto the UNIX host. _____
	The complete path to the locations where you will install: The GENTRAN:Server UNIX Security Utility _____ The GENTRAN:Server UNIX host software _____ The GENTRAN:Server Windows client software _____ _____ _____ _____ _____
	The UNIX login ID and password for the user who will own the security processes and files. Login: _____ Password: _____
	The UNIX login ID and password for the EDI user who will own the EDI processes and files. Login: _____ Password: _____

(Cont'd) Done	Item
	Decide whether you want one Security Administration Utility per host or one per environment on the host. _____ You may create directories to contain them now, or let the installation process create them for you.
	Optionally, the serial number for the XML translation option installation. _____
	Optionally, the serial number for the ODBC database driver installation. _____
	On the attached label, find the GENTRAN:Server product key and license numbers to assign to the client computers. <div style="border: 1px solid black; width: 100%; height: 100%;"></div>
	The setting to use for the VVTERM environment variable. (This is usually the same as your terminal emulation environment variable, TERM.) _____
	The path to the vvtermcap file. _____

GENTRAN:Server is a registered trademark of Sterling Commerce, Inc.  
© Copyright 2002  
Sterling Commerce (Mid America), Inc.  
ALL RIGHTS RESERVED