

IBM Sterling Gentran:Viewpoint for z/OS

# Technical Reference Guide

Release 6.6



This edition applies to the 6.6 Version of IBM® Sterling Gentrans:Viewpoint® for z/OS® and to all subsequent releases and modifications until otherwise indicated in new editions.

Before using this information and the product it supports, read the information in Notices on page N-1.

Licensed Materials - Property of IBM

IBM® Sterling Gentrans:Viewpoint® for z/OS®

© Copyright IBM Corp. 1988, 2011. All Rights Reserved.

US Government Users Restricted Rights - Use, duplication or disclosure restricted by GSA ADP Schedule Contract with IBM Corp.

# Table of Contents

## Chapter 1 Batch Program Descriptions

EDIG010 – Online JCL File Maintenance .....	1-2
EDIN100 – Batch Gateway .....	1-5
EDIN110 – STOUTL Report Processor .....	1-6
EDIN120 – Sterling Gentran:Viewpoint Communications Re-Org .....	1-8
EDIN130 – Staging File Initialize .....	1-10
EDIN140 – Maintenance/Inquiry .....	1-12
EDIN141 – Profile Maintenance/Inquiry Subroutine .....	1-16
EDIN142 – Repository Maintenance/Inquiry Subroutine .....	1-17
EDIN144 – Tracking Management Maintenance/Inquiry Subroutine .....	1-18
EDIN150 – Communications Queue File Initialize .....	1-19
EDIN200 – Batch Action Processor .....	1-21
EDIN300 – User Batch Gateway .....	1-23
EDIVLX – Sterling Connect Log Exit .....	1-24
EDIVLXU – Sterling Connect Log Exit with User Log Exit Call .....	1-25
EDIVWAIT – Batch Wait Utility .....	1-26

## Chapter 2 CICS Region Information

Technical Architecture and Processing Flow .....	2-2
File Sharing Between Batch and CICS .....	2-5
CICS Region Requirements .....	2-6
CICS Region Configuration Options .....	2-9
CICS Program Descriptions .....	2-10

## Chapter 3 File Descriptions

EDIAPPLT – Sterling Gentran:Realtime Tutorial Application Data File .....	3-2
EDIAPPLV – Sterling Gentran:Realtime IVP Application Data File .....	3-3
EDICFC – Sterling Connect Failure Codes File .....	3-4
EDICFG – Configuration File .....	3-5
EDICXRF – Sterling Connect Cross Reference File .....	3-9
EDIDATT – Sterling Gentran:Realtime Tutorial EDI Data File .....	3-10
EDIDATV – Sterling Gentran:Realtime IVP EDI Data File .....	3-11
EDIJCL – JCL File .....	3-12
EDIPRMP – Prompt File .....	3-13
EDIVA – Archive File .....	3-14
EDIVCQ – Communications Queue File .....	3-15
EDIVM – Master Index File .....	3-16
EDIVOURT – Offline Utility Report File .....	3-18
EDIVOUXR – Offline Utility Cross Reference File .....	3-19
EDIVP – Profile File .....	3-20
EDIVPPX – Trace ID Cross Reference File .....	3-23
EDIVR – Repository File .....	3-24

## Table of Contents

---

EDIVSFn – Staging Files .....	3-26
EDIVnnnn – Staging Temporary Storage Queues .....	3-28
EDIVT – Trace ID File .....	3-29
EDIVTO – Online Trace ID File .....	3-30
<b>Chapter 4 User Exits and APIs</b>	
Exception Action User Exit .....	4-2
System Options – Error User Exit .....	4-16
Sterling Gentran:Viewpoint User Gateways .....	4-17
User Batch Gateway – EDIN300 .....	4-36
User Online Gateway – EDIX970 .....	4-38
Tracking User Exit .....	4-40
<b>Appendix A Job Control Language</b>	
Sterling Gentran:Viewpoint Base (Exception Management) JCL .....	A-2
Sterling Gentran:Viewpoint Tracking Management JCL .....	A-2
<b>Appendix B Sample Programs</b>	
<b>Notices</b>	
Trademarks .....	N-3
<b>Glossary</b>	
<b>Index</b>	

# Batch Program Descriptions

Batch Program Descriptions provides an overview of the processing of each batch program. Files accessed and reports generated by each program are provided. Detailed control parameter information for each program is also included in this chapter.

Chapter One is organized by program:

<b>Topic</b>	<b>Page</b>
EDIG010 – Online JCL File Maintenance .....	1-2
EDIN100 – Batch Gateway .....	1-5
EDIN110 – STOUTL Report Processor .....	1-6
EDIN120 – Sterling Gentran:Viewpoint Communications Re-Org .....	1-8
EDIN130 – Staging File Initialize .....	1-10
EDIN140 – Maintenance/Inquiry .....	1-12
EDIN141 – Profile Maintenance/Inquiry Subroutine.....	1-16
EDIN142 – Repository Maintenance/Inquiry Subroutine .....	1-17
EDIN144 – Tracking Management Maintenance/Inquiry Subroutine .....	1-18
EDIN150 – Communications Queue File Initialize .....	1-19
EDIN200 – Batch Action Processor .....	1-21
EDIN300 – User Batch Gateway.....	1-23
EDIVLX – Sterling Connect Log Exit .....	1-24
EDIVLXU – Sterling Connect Log Exit with User Log Exit Call.....	1-25
EDIVWAIT – Batch Wait Utility .....	1-26

## EDIG010 – Online JCL File Maintenance

### Purpose

This program is used to update the Online JCL File with JCL streams.

### Operation

The Online JCL File Maintenance program runs as a batch job step (program name EDIG010).

Online JCL File Maintenance is used to load, reload, unload, and delete JCL streams to/from the Online JCL File (EDIJCL).

Control Parameters are used to identify the JCL job stream as well as the operation that needs to be performed.

### Inputs

The following files are input to this program:

DDname	File Name
EDICFG	Configuration file
EDICNTL	Control Parameters
EDIJCL	JCL File
EDIJCLI	Sequential JCL Input File (for LOAD and RELOAD)
ERRCTL	Error Message and Control file

### Outputs

The following files are output from this program:

DDname	File Name
EDIJCL	JCL File
EDIJCLO	Sequential JCL Output File (for UNLOAD only)

### Reports

The following reports are produced by this program:

DDname	Report ID	File Name
EDILOG	EDI158	Processing Log
EDISUM	EDI159	Summary Report

## Control Parameters

The following Online JCL File Maintenance operations and selection criteria are specified through control parameters:

### OPERATIONS

LOAD (Default operation)

or

UNLOAD (Unload a JCL stream to a Sequential File)

or

RELOAD (Reload a JCL stream)

or

DELETE (Delete a JCL stream)

### SELECTION CRITERIA Defaults

JCL-FUNCTION-IND (no default)

JCL-NAME (no default)

## Valid Criteria Values

The criteria values which are specified will vary, based on the online function which will be submitting the JCL stream. These requirements are identified with each online function that uses the Online JCL File.

JCL-FUNCTION-IND Specify the 1 character function indicator. This must be specified for all operations performed.

V - IBM® Sterling Gentran:Viewpoint®

JCL-NAME A 1- to10-character name which is used to reference this JCL stream. This must be specified for all operations performed.

**Note:** In order to initiate a batch Sterling Gentran:Viewpoint Exception Action, the JCL-NAME specified must be the Batch Procedure name specified on the Exception Action Definition. Refer to “EDIM626 -Exception Action Definition Screen” in the *IBM® Sterling Gentran:Viewpoint® for z/OS® Release 6.6 User Guide*, Chapter 5, “Screen Descriptions” for more details.

## Example

Load the JCL stream EDIJOB1, with a function indicator of Sterling Gentran:Viewpoint.

```
cols                                3
12345.....                          5

LOAD
  JCL-FUNCTION-IND                   V
  JCL-NAME                            EDIJOB1
```

## JCL Input File Requirements

The JCL Input File is a sequential, card image, file. The actual JCL will vary based on the function which will be submitting the JCL. Symbolic variables may be used within this JCL, including a general job card with override indicators and instream data indicators.

The Job Card

- Example of a Job Card:

```
//ABC#### JOB (9999999,9999999), 'NAME      XXX DDD'
```

- The Job Card for this JCL Input File job stream must be the first record found, and may contain fields which are replaced during Job Submission. The values which may be replaced are:

##### Replaced with the CICS task ID.

For values to be replaced the following must be true:

##### Will be replaced if the last 4 characters of the job name contain #####.



## EDIN100 – Batch Gateway

### Purpose

The Sterling Gentran:Viewpoint Batch Gateway is used to capture data for Sterling Gentran:Viewpoint processing.

### Operation

The Sterling Gentran:Viewpoint Batch Gateway is a subroutine (EDIN100) which is called by batch processes to interface with Sterling Gentran:Viewpoint.

It cannot be executed as a stand-alone program.

### Inputs

The following files are input to this program:

DDname	File Name
EDIVP	Profile File
EDIVPPX	Trace ID Cross Reference File (for IBM® Sterling Gentran:Plus® users of Tracking Management only)
EDIVT	Trace ID File (for Tracking Management only)

### Outputs

The following files are output from this program:

DDname	File Name
EDIVPPX	Trace ID Cross Reference File (for Sterling Gentran:Plus users of Tracking Management only)
EDIVSF	Staging File
EDIVT	Trace ID File (for Tracking Management only)

### Reports

No reports are produced by this subroutine.

### Control Parameters

There are no control parameters for this subroutine.

## EDIN110 – STOUTL Report Processor

### Purpose

The STOUTL Report Processor allows the Offline Utilities from Sterling Connect to pass information to the Sterling Gentran:Viewpoint Staging Area.

This program is only available for Sterling Gentran:Plus users.

### Operation

The STOUTL Report Processor runs as a batch job step (program name EDIN110). It must be run immediately after the Sterling Connect Offline Utilities are executed. The STOUTL Report Processor is only enabled for ADD and EXTRACT functions.

### Inputs

The following files are input to this program:

DDname	File Name
EDICFG	Configuration File
ERRCTL	Error Message and Control file
EDIVP	Profile File
EDIVPPX	Trace ID Cross Reference File (for Tracking Management only)
EDIVOURT	Offline Utility Report File (for ADD and EXTRACT functions)
EDIVOUSR	Offline Utility Cross Reference File (for ADD function only)
EDIVT	Trace ID File (for Tracking Management only)

### Outputs

The following files are output from this program:

DDname	File Name
EDIVPPX	Trace ID Cross Reference File (for Tracking Management only)
EDIVSF	Staging File
EDIVT	Trace ID File (for Tracking Management only)

**Reports**

The following reports are produced by this program:

<b>DDname</b>	<b>Report ID</b>	<b>File Name</b>
EDILOG	N110LOG	Processing Log
EDISUM	N110SUM	Summary Report
REPORT1	N110RPT1	STOUTL REPORTS
REPORT2	N110RPT2	STOUTL SYSPRINT

**Control Parameters**

None.

## EDIN120 – Sterling Gentran:Viewpoint Communications Re-Org

### Purpose

The Sterling Gentran:Viewpoint Communications Re-Org program is used to re-synchronize the communications batch numbers stored on the Sterling Gentran:Viewpoint Repository and Sterling Gentran:Viewpoint Trace ID Cross Reference file, when the Sterling Connect files are maintained to update the batch numbers.

This program is only available for Sterling Gentran:Plus users.

### Operation

The Sterling Gentran:Viewpoint Communications Re-Org program runs as a batch job step (program name EDIN120). It must be run immediately after the Sterling Connect files are maintained.

This program requires exclusive update access to the Sterling Gentran:Viewpoint Repository file and Trace ID Cross Reference file. These files must not be open for update access in the Sterling Gentran:Viewpoint CICS system, while running the Sterling Gentran:Viewpoint Communications Re-Org program.

**Note:** For existing Sterling Gentran:Plus users, the JCL member REORGDB included in the Sterling Gentran:Viewpoint JCL library should be used in place of the same member from the Sterling Gentran:Plus JCL Library. The Sterling Gentran:Viewpoint member includes the required JCL to run the Sterling Gentran:Viewpoint Communications Re-Org Program.

### Inputs

The following files are input to this program:

DDname	File Name
EDICFG	Configuration File
EDICXRF	Sterling Connect Cross Reference File
ERRCTL	Error Message and Control file

### Outputs

The following files are output from this program:

DDname	File Name
EDIVPPX	Trace ID Cross Reference File (for Tracking Management only)
EDIVR	Repository File

## Reports

The following reports are produced by this program:

DDname	Report ID	File Name
EDILOG	N120LOG	Processing Log
EDISUM	N120SUM	Summary Report

## Control Parameters

None.

## EDIN130 – Staging File Initialize

### Purpose

The Sterling Gentran:Viewpoint Staging File Initialize program is used to initialize new Sterling Gentran:Viewpoint Staging Files.

### Operation

Staging File Initialize runs as a batch job step (program name EDIN130). It must be run any time a new Staging File is created, or an existing file is re-defined.

This program requires exclusive update access to the Sterling Gentran:Viewpoint Profile file. The Sterling Gentran:Viewpoint Profile file must not be open for update access, in the Sterling Gentran:Viewpoint CICS system, while running the Staging File Initialize program. The initialized Staging File will be enabled in the Sterling Gentran:Viewpoint System.

### Inputs

The following files are input to this program:

DDname	File Name
EDICFG	Configuration file
EDICNTL	Control Parameters
EDIVP	Profile File
ERRCTL	Error Message and Control file

### Outputs

The following files are output from this program:

DDname	File Name
EDIVP	Profile File
EDIVSF	Staging File

### Reports

The following reports are produced by this program:

DDname	Report ID	File Name
EDILOG	EDI152	Processing Log
EDISUM	EDI153	Summary Report

## Control Parameters

The Sterling Gentran:Viewpoint Staging File Initialize program allows the following operations, and selection criteria, to be specified through control parameters.

### Parameter Record 1

Position	Field Content	Format	Length	Description
001-006	FORMAT	AN	6	Identifies the process to be performed is to format (initialize) the file.
007-080	Unused	AN	74	Spaces.

### Parameter Record 2

Position	Field Content	Format	Length	Description
001-002	Unused	AN	2	Spaces.
003-014	STAGING-FILE	AN	12	Identifies the file.
015-034	Unused	AN	20	Spaces.
035-036	Staging file number	N	2	Identifies the specific staging file.
037-037	Unused	AN	1	Spaces.
038-045	Count	N	8	The number of records to be initialized.
046-080	Unused	AN	35	Spaces.

## Example

Format Staging File 02.

```

cols                3  3
12345.....         5  8

FORMAT
  STAGING-FILE      01 00002000

```

---

## EDIN140 – Maintenance/Inquiry

### Purpose

Use the Sterling Gentran:Viewpoint Maintenance/Inquiry program to maintain and inquire against Sterling Gentran:Viewpoint files.

### Operation

Sterling Gentran:Viewpoint Maintenance/Inquiry can be run in the following Classes:

<b>Exceptions</b>	In <b>Exceptions</b> class, selected data have been captured by Exception Management.
<b>System</b>	In <b>System</b> class, system defined options are selected.
<b>Tracking</b>	In <b>Tracking</b> class, selected items are being monitored by Tracking Management.

Sterling Gentran:Viewpoint Maintenance/Inquiry can be run against the following Files:

<b>Repository</b>	For the <b>Repository</b> file, data is selected from the Repository and Master Index files.
<b>Profile</b>	For the <b>Profile</b> file, data is selected from the Profile file.

Sterling Gentran:Viewpoint Maintenance/Inquiry can be run in the following Modes:

<b>Purge</b>	In <b>Purge</b> mode, selected data is deleted from the Sterling Gentran:Viewpoint files.
<b>Archive</b>	In <b>Archive</b> mode, selected data is written to an archive file and deleted from the Sterling Gentran:Viewpoint files.
<b>Restore</b>	In <b>Restore</b> mode, selected data is restored to the Sterling Gentran:Viewpoint files from an archive file.
<b>Inquiry</b>	<b>Inquiry</b> mode is used to report against data on the Sterling Gentran:Viewpoint files.

Sterling Gentran:Viewpoint Maintenance/Inquiry can be run at the following Report Levels:

<b>Status</b>	For <b>Status</b> level, only Status level reports are generated.
<b>Detail</b>	For <b>Detail</b> level, only Detail level reports are generated.
<b>Both</b>	For <b>Both</b> level, both Status and Detail level reports are generated.
<b>None</b>	For <b>None</b> level, no reports are generated.

Sterling Gentran:Viewpoint Maintenance/Inquiry can be run with a variety of flexible Selection Criteria. You can specify up to a 7-expression condition with full Boolean logic and AND/OR connectors.



Set up the Class, File, Mode, Report Level, and Selection Criteria using the Sterling Gentran:Viewpoint Maintenance/Inquiry Options Definition screen. Refer to “Extended System Management Screens” in the *IBM® Sterling Gentran:Viewpoint® for z/OS® Release 6.6 User Guide*, Chapter 5, “Screen Descriptions” for details on the options available.

Sterling Gentran:Viewpoint is delivered with several Maintenance/Inquiry models. Users can review these models from the Maintenance/Inquiry Options Directory (EDIM608). Maintenance/Inquiry runs as a batch job step (program name EDIN140). This program calls EDIN141, EDIN142, or EDIN144 depending on the requested function. Users may run Maintenance/Inquiry on a scheduled basis to perform regular housekeeping, or run on an ad hoc basis for specific inquiry or maintenance requests.

### **Special Requirements for Purge, Archive, and Restore modes**

The Purge, Archive, and Restore maintenance modes require exclusive control of the Master Index, Profile, and Repository files, which means that you must close the files in CICS while performing the maintenance. To close the files, either shut down CICS or disable Sterling Gentran:Viewpoint and close the files.

If you choose to disable Sterling Gentran:Viewpoint, you can either disable it manually, or by automating the process.

#### **Manually disable Sterling Gentran:Viewpoint**

Perform the following steps to manually disable Sterling Gentran:Viewpoint and perform the maintenance:

- Step 1. Access the System Options screen (EDIM685) to change the system status to “disabled”.
- Step 2. The next time the Sterling Gentran:Viewpoint scanner runs, it will terminate the system so you can safely close the files.
- Step 3. Close the files and perform the maintenance.
- Step 4. Once you have completed the maintenance process, open the files.
- Step 5. Use the F13 function key on the System Options screen (EDIM685) to enable and start the Sterling Gentran:Viewpoint system.

#### **Automate the disable Sterling Gentran:Viewpoint process**

Perform the following steps to automatically disable Sterling Gentran:Viewpoint and perform the maintenance:

- Step 1. Run a batch utility program that can start the CICS transaction EDIW. This transaction executes the System Status Toggle Program (EDIVTOGL). This program will disable the system.
- Step 2. Run the Batch Wait Utility program (EDIVWAIT). This program checks the status of the Sterling Gentran:Viewpoint system and doesn't complete until Sterling Gentran:Viewpoint is disabled.
- Step 3. Once EDIVWAIT has completed, close the files and perform the maintenance.

- Step 4. Once you have completed the maintenance process, open the files.
- Step 5. Run a batch utility program to again start the CICS Transaction EDIW. This time the System Status Toggle Program (EDIVTOGL) will enable the system.

**Note:** The specific batch utility program used to automate the process is site dependant. You should consult your systems programmers to determine the utility to use.

## Inputs

The following files are input to this program:

DDname	File Name
EDICFG	Configuration File
EDICNTL	Control Parameters
EDIIAA	Inbound Application Databank Directory
EDIIEA	Inbound EDI Databank Directory
EDIOAA	Outbound Application Databank Directory
EDIOEA	Outbound EDI Databank Directory
EDIRIAA	IBM® Sterling Gentran:Realtime® Inbound Application Databank Directory
EDIRIEA	Sterling Gentran:Realtime Inbound EDI Databank Directory
EDIROAA	Sterling Gentran:Realtime Outbound Application Databank Directory
EDIROEA	Sterling Gentran:Realtime Outbound EDI Databank Directory
EDIVA	Archive File (for <b>Restore</b> mode only)
EDIVM	Master Index File (for Tracking Management only)
EDIVP	Profile File
EDIVR	Repository File
ERRCTL	Error Message and Control file

## Outputs

The following files are output from this program:

DDname	File Name
EDIVA	Archive File (for <b>Archive</b> mode only)
EDIVM	Master Index File (for Tracking Management only)
EDIVP	Profile File
EDIVR	Repository File

## Reports

The following reports are produced by this program:

DDname	Report ID	File Name
EDILOG	EDI155	Processing Log
EDIRPT1	EDI156	User Detail Report
EDIRPT2	EDI157	User Status Report
EDIRPT3	EDI160	User Status Report
EDISUM	EDI154	Summary Report

## Control Parameters

The Sterling Gentran:Viewpoint Maintenance/Inquiry program allows the following operations and selection criteria to be specified through control parameters.

The control parameters are specified as follows:

### OPERATIONS

PROCESS (Default operation)

CRITERIA Defaults

DEFINITION (no default)

### VALID CRITERIA VALUES

DEFINITION This control parameter specifies the name of a Maintenance/Inquiry definition, which has been set-up using the Sterling Gentran:Viewpoint Maintenance/Inquiry Options Definition. The options specified in the definition are used to control the processing of this run. The DEFINITION name must be specified.

## Example

Run the Maintenance/Inquiry program using the definition WKLYPURG.

```
cols          3
12345.....   5
```

```
PROCESS
DEFINITION          WKLYPURG
```

## EDIN141 – Profile Maintenance/Inquiry Subroutine

### Purpose

The Sterling Gentran:Viewpoint Profile Maintenance/Inquiry Subroutine is used by the Sterling Gentran:Viewpoint Maintenance/Inquiry program (EDIN140) to process against the Sterling Gentran:Viewpoint Profile file.

### Operation

The Profile Maintenance/Inquiry Subroutine (program name EDIN141) is called by Maintenance/Inquiry (program EDIN140).

It cannot be executed as a stand-alone program.

## EDIN142 – Repository Maintenance/Inquiry Subroutine

### Purpose

The Sterling Gentran:Viewpoint Repository Maintenance/Inquiry Subroutine is used by the Sterling Gentran:Viewpoint Maintenance/Inquiry program (EDIN140) to process against the Sterling Gentran:Viewpoint Repository file.

### Operation

The Repository Maintenance/Inquiry Subroutine (program name EDIN142) is called by Maintenance/Inquiry (program EDIN140).

It cannot be executed as a stand-alone program.

## EDIN144 – Tracking Management Maintenance/Inquiry Subroutine

### Purpose

The Sterling Gentran:Viewpoint Tracking Management Maintenance/Inquiry Subroutine is used by the Sterling Gentran:Viewpoint Maintenance/Inquiry program (EDIN140), to process against the items that are being monitored by Tracking Management on the Sterling Gentran:Viewpoint Repository and Master Index files.

### Operation

The Tracking Management Maintenance/Inquiry Subroutine (program name EDIN144) is called by Maintenance/Inquiry (program EDIN140).

It cannot be executed as a stand-alone program.

## EDIN150 – Communications Queue File Initialize

### Purpose

The Communications Queue File Initialize program is used to initialize the Sterling Gentran:Viewpoint Communications Queue File.

This program is only available for Sterling Gentran:Plus users.

### Operation

Communications Queue File Initialize runs as a batch job step (program name EDIN150). It must be run any time a new Communications Queue File is created, or an existing file is re-defined.

This program requires exclusive update access to the Sterling Gentran:Viewpoint Profile file. The Sterling Gentran:Viewpoint Profile file must not be open for update access, in the Sterling Gentran:Viewpoint CICS system, while running the Communications Queue File Initialize program.

### Inputs

The following files are input to this program:

DDname	File Name
EDICFG	Configuration File
EDICNTL	Control Parameters
EDIVP	Profile File
ERRCTL	Error Message and Control file

### Outputs

The following files are output from this program:

DDname	File Name
EDIVCQ	Communications Queue File
EDIVP	Profile File

### Reports

The following reports are produced by this program:

DDname	Report ID	File Name
EDILOG	N150LOG	Processing Log
EDISUM	N150SUM	Summary Report

## Control Parameters

The Communications Queue File Initialize program allows the following operations, and selection criteria, to be specified through control parameters.

### Parameter Record 1

Positions	Field Content	Format	Length	Description
001-006	FORMAT	AN	6	Identifies the process to be performed is to format (initialize) the file.
007-080	Unused	AN	74	Spaces.

### Parameter Record 2

Positions	Field Content	Format	Length	Description
001-002	Unused	AN	2	Spaces.
003-022	COMMUNICATIONS-QUEUE	AN	20	Identifies the file.
023-034	Unused	AN	12	Spaces.
035-042	Count	N	8	The number of records to be initialized.
043-080	Unused	AN	38	Spaces.

## Example

Format the Communications Queue File.

```

cols                3
12345.....         5

FORMAT
COMMUNICATIONS-QUEUE    00002000

```



## EDIN200 – Batch Action Processor

### Purpose

The Sterling Gentran:Viewpoint Batch Action Processor passes Sterling Gentran:Viewpoint data to a batch Sterling Gentran:Viewpoint Exception Action User Exit.

### Operation

The Sterling Gentran:Viewpoint Batch Action Processor program (program name EDIN200) is initiated by the Sterling Gentran:Viewpoint Post Processor. The Sterling Gentran:Viewpoint Batch Action Processor calls (via a COBOL Call) a user action program, passing it exception data. The user action program to be called is defined through the online Sterling Gentran:Viewpoint Exception Action Definition screen. Exception data is passed to the Sterling Gentran:Viewpoint Batch Action Processor through an instream data file.

This program will terminate with a return code 16, if invalid data is encountered in the Instream Data File.

### Inputs

The following file is input to this program:

DDname	File Name
EDIVDAT	Instream Sterling Gentran:Viewpoint Data File

### Outputs

None.

### Reports

None.

### Control Parameters

None.

### Special JCL Requirements

The JCL for the Sterling Gentran:Viewpoint Batch Action Processor program is submitted automatically to the internal reader, by the Sterling Gentran:Viewpoint Post Processor. This JCL must be pre-loaded into the Online JCL file, using the Online JCL File Maintenance program (EDIG010).

This JCL must include an instream @@DATA01 control card as shown below. When submitted to the internal reader, this card is replaced, with unformatted Sterling Gentran:Viewpoint data, by the Sterling Gentran:Viewpoint Post Processor. A sample JCL stream is shown here:

```
//... JOB (. . .)
//*
/* JCL FOR RUNNING THE VIEWPOINT BATCH ACTION PROCESSOR
/*
//EDIN200 EXEC PGM=EDIN200
//STEPLIB DD DSN=XXXXX.EDI.LOADLIB,DISP=SHR
// DD DSN=USER.EXIT.LOADLIB,DISP=SHR
//SYSOUT DD SYSOUT=*
//EDIVDAT DD *
@@DATA01
/*
// Any additional files required for the user exit should go
// here.
```

Values specified in the job card may be substituted during job submission. Refer to program "EDIG010 - Online JCL File Maintenance", described in this chapter, for more information.

## EDIN300 – User Batch Gateway

### Purpose

The Sterling Gentran:Viewpoint User Batch Gateway is used to capture data for Sterling Gentran:Viewpoint processing.

### Operation

The Sterling Gentran:Viewpoint User Batch Gateway is a subroutine (program name EDIN300), which is called by the batch user application processes, to interface with Sterling Gentran:Viewpoint for Tracking Management.

It cannot be executed as a stand-alone program.

For more information about "User Batch Gateway - EDIN300", refer to Chapter 4, "User Exits and APIs".

### Inputs

The following files are input to this program:

DDname	File Name
EDICFG	Configuration File
EDIVP	Profile File
EDIVT	Trace ID File
ERRCTL	Error Message and Control file

### Outputs

The following files are output from this program:

DDname	File Name
EDIVSF	Staging File
EDIVT	Trace ID File

### Reports

None.

### Control Parameters

None.

---

## EDIVLX – Sterling Connect Log Exit

### Purpose

The Sterling Gentran:Viewpoint Sterling Connect Log Exit passes detailed log entries from Sterling Connect to the Sterling Gentran:Viewpoint Communications Queue file. The Communications Post Processor will be invoked to process information from this queue to the Sterling Gentran:Viewpoint Staging Area.

### Operation

The Sterling Connect Log Exit is a subroutine (program name EDIVLX) called by the Sterling Connect process at log exit points to interface with the Sterling Gentran:Viewpoint system.

You must specify the program name (EDIVLX) on the XLOG parameter in the Sterling Connect Options Definition File (ODF). If a User Log Exit program is already specified, then specify the Sterling Connect Log Exit with User Log Exit Call (EDIVLXU) program on the XLOG parameter.

EDIVLX cannot be executed as a stand-alone program.

### Inputs

The following file is input to this program:

DDname	File Name
EDIVCQ	Communications Queue File

### Outputs

The following file is output from this program:

DDname	File Name
EDIVCQ	Communications Queue File

### Reports

None.

---

## EDIVLXU – Sterling Connect Log Exit with User Log Exit Call

### Purpose

The Sterling Gentran:Viewpoint Sterling Connect Log Exit passes detailed log entries from Sterling Connect to the Sterling Gentran:Viewpoint Communications Queue file. The Log Exit will also call a User Log Exit program for each log entry. The Communications Post Processor will be invoked to process information from this queue to the Sterling Gentran:Viewpoint Staging Area.

### Operation

The Sterling Connect Log Exit is a subroutine (program name EDIVLXU) called by the Sterling Connect process at log exit points to interface with the Sterling Gentran:Viewpoint system.

You must specify the program name (EDIVLXU) on the XLOG parameter in the Sterling Connect Options Definition File (ODF) and the User Log Exit program name must be specified on the Sterling Tracking Point Definition screen (EDIM603) for the Sterling Connect communications product. If a User Log Exit program is not used, then specify the Sterling Connect Log Exit (EDIVLX) program on the XLOG parameter.

EDIVLXU cannot be executed as a stand-alone program.

### Inputs

The following file is input to this program:

DDname	File Name
EDIVCQ	Communications Queue File

### Outputs

The following file is output from this program:

DDname	File Name
EDIVCQ	Communications Queue File

### Reports

None.

## EDIVWAIT – Batch Wait Utility

### Purpose

The Batch Wait Utility program is used to delay the execution of batch programs that must close/deallocate the online files for maintenance until all online activity has ended and the system has been disabled.

### Operation

The JCL to execute this program can be found in the JCL member EXECWAIT.

### Processing

The EDIVWAIT program reads the profile file and checks the system status on the system control record. If the system status is “R” or “V”, it puts itself in a wait state for an interval equal to the scanner interval and repeats the check until the system has been disabled. There are two return codes: 0=System is now disabled and 16=System is enabled (that is, it will not become disabled without intervention). You must run EDIVWAIT after the EDIW transaction (program EDIVTOGL) has been started. Start the EDIW transaction manually by entering it on a CICS screen or automatically from a batch step. EDIVWAIT must be executed before other steps that use the online files. Subsequent steps should check for the 0 return code before executing.

### Inputs

The following file is input to this program:

DDname	File Name
EDIVP	Profile File

### Outputs

This program produces no output.

# CICS Region Information

CICS Region Information provides a technical description of the CICS portion of Sterling Gentran:Viewpoint. The purpose of all online programs and files is described. CICS resource requirements and file access for each program are provided.

<b>Topic</b>	<b>Page</b>
Technical Architecture and Processing Flow .....	2-2
File Sharing Between Batch and CICS.....	2-5
CICS Region Requirements.....	2-6
CICS Region Configuration Options.....	2-9
CICS Program Descriptions .....	2-10

## Technical Architecture and Processing Flow

This section describes the technical architecture of Sterling Gentran:Viewpoint and the flow of data through the Sterling Gentran:Viewpoint Exception Management and Tracking Management systems.

The Sterling Gentran:Viewpoint system is comprised of three major areas:

- Conventional terminal-based CICS Screens

The online screens allow you to define the data which you want monitored by Sterling Gentran:Viewpoint. The online screens allow you to view and maintain the information captured by the Sterling Gentran:Viewpoint system. All of the Sterling Gentran:Viewpoint online screens use CICS pseudo-conversational programming.

- Sterling Gentran:Viewpoint Gateways

The Sterling Gentran:Viewpoint Gateways capture data from Sterling Gentran, Sterling Connect, and User Tracking Points, into a staging area for subsequent processing by the Sterling Gentran:Viewpoint online facility.

- Non-terminal background CICS Programs

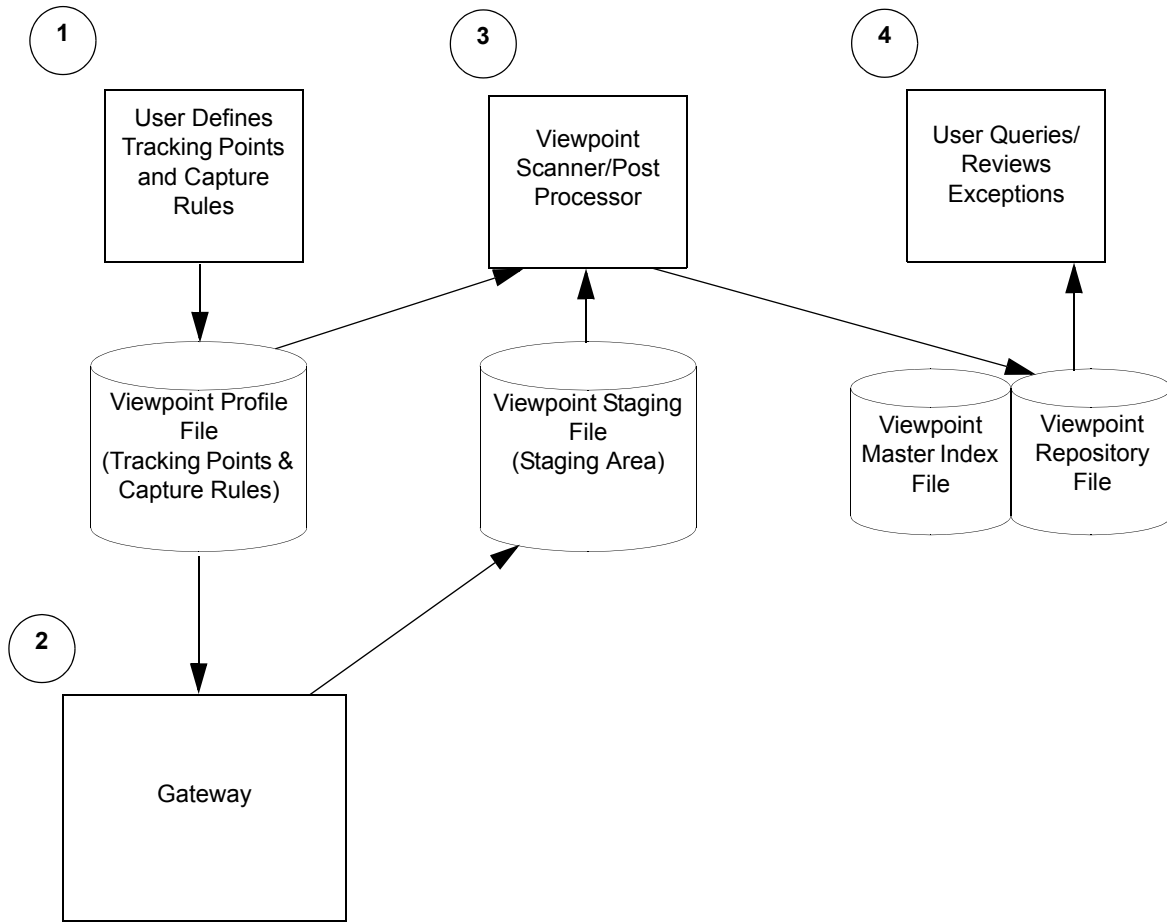
These programs analyze the information captured by the Sterling Gentran:Viewpoint Gateways and store this information in the Sterling Gentran:Viewpoint Repository and Master Index files for subsequent access using the online screens. This is accomplished using background (non-terminal) CICS Command-Level COBOL programs. As well as capturing the data and formatting it for online access, these programs may be set-up to automatically pass the information to an online or batch user program.

The processing flow for Exception Management and Tracking Management is:

1. The Sterling Gentran:Viewpoint user defines the tracking points that are going to be monitored, as well as the information to be captured.
2. The Tracking point runs, allowing the Sterling Gentran:Viewpoint Gateway to capture information to the Staging area.
3. The Sterling Gentran:Viewpoint Scanner initiates the Post Processor. The Post Processor analyzes the data in the Staging Area and passes the information to the Sterling Gentran:Viewpoint Repository and Master Index files.
4. The Sterling Gentran:Viewpoint users review the exception data captured or query the tracked items.



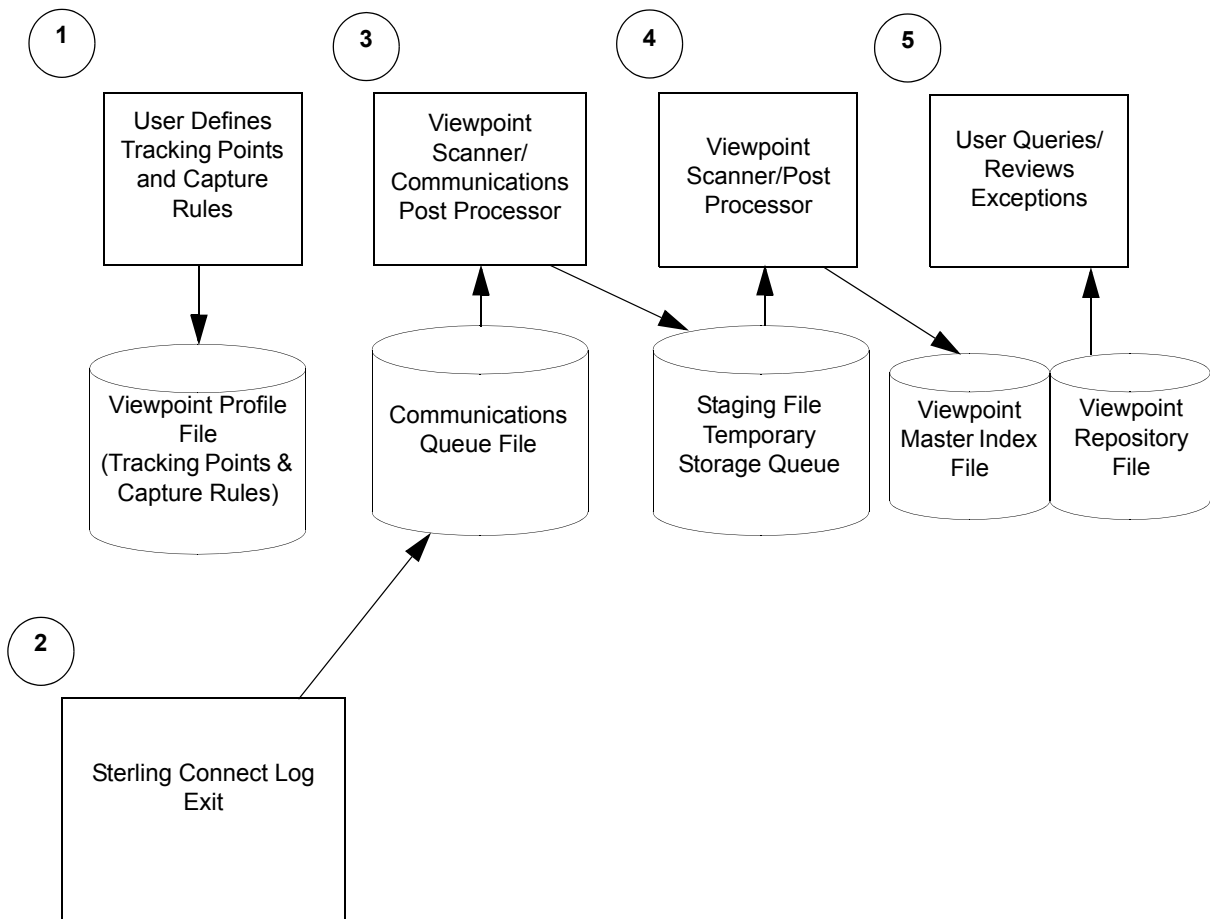
Figure 2.1 illustrates the processing flow for Exception Management and Tracking Management.



**Figure 2.1 Processing Flow for Exception Management and Tracking Management**

For Sterling Gentran:Plus users, the processing flow for communication batch items is:

1. The Sterling Gentran:Viewpoint user defines the tracking points that are going to be monitored, as well as the information to be captured.
2. The Sterling Connect Log Exit will be invoked by Sterling Connect. It will pass the communication log entries to the Sterling Gentran:Viewpoint Communications Queue file.
3. The Sterling Gentran:Viewpoint Scanner initiates the Communications Post Processor to pass the communications information to the Staging area in Staging Temporary Storage Queues.
4. The Sterling Gentran:Viewpoint Scanner will initiate the Post Processor. The Post Processor analyzes the data on the Staging Temporary Storage Queues and passes the information to the Sterling Gentran:Viewpoint Repository and Master Index (Tracking Management) files.
5. The Sterling Gentran:Viewpoint users review the exception data captured or query the tracked items.



**Figure 2.2 Processing Flow for Sterling Gentran:Plus Users**

## File Sharing Between Batch and CICS

The Sterling Gentran:Viewpoint system uses standard VSAM file sharing. Sterling Gentran:Viewpoint VSAM files, which are updated in CICS are accessed in batch for read only, while those which are updated in batch are accessed in CICS for read only.

A batch maintenance/inquiry utility program (EDIN140) is provided which will update the Sterling Gentran:Viewpoint Profile and Repository files. For Tracking Management users the batch maintenance/inquiry program will also update the Sterling Gentran:Viewpoint Master Index file. These files must be closed in the online environment while this program is performing maintenance functions.

**For users integrating communications** a Sterling Gentran:Viewpoint Communications Re-org program (EDIN120) is provided which will update the Sterling Gentran:Viewpoint Repository and Trace ID Cross Reference files to keep the communications batch numbers stored on these files synchronized with the Sterling Connect Communications Data Queues. These files must be closed in the online environment while this program is performing its function.

**For users integrating communications**, the Communications Queue file is used to pass communications data from the Sterling Connect system log exit calls to Sterling Gentran:Viewpoint. Sterling Gentran:Viewpoint relies on the use of specific VSAM facilities to guarantee the integrity of this file which is shared between CICS and batch. As a result, the Communications Queue file should not be protected by any CICS recovery facility.

## CICS Region Requirements

This section provides CICS region requirements for the online Sterling Gentran:Viewpoint system.

This section is organized into the following topics:

- Temporary Storage Requirements
- Enqueue Requirements
- CICS Recovery Requirements
- CICS Resource Requirements

### Temporary Storage Requirements

The Sterling Gentran:Viewpoint system makes use of Temporary Storage Queues to hold system status information and transaction data. The following is a list of Queues:

Temporary Storage Queue Name	Space Requirements
simCtermid	5000 Bytes x # of concurrent tasks
simDtermid	130 Bytes x # of concurrent tasks
simEtermid	150 Bytes x # of concurrent tasks
simHtermid	1150 Bytes x # of concurrent tasks
simPtermid	450 Bytes x # of concurrent tasks
simVtaskid	550 Bytes x # of items
simWtermid	700 Bytes x # of concurrent tasks
simXtermid	350 Bytes x # of concurrent tasks
simVPPQ	825 Bytes
simVPSQ	500 Bytes
simXVSQN	2 Bytes
simVTMQ	300 Bytes

- sim** A 3-character System Image ID of the Sterling Gentran:Viewpoint system.
- termid** A 4-character Terminal ID of the terminal processing the current task.
- taskid** A 4-digit number retrieved from the VSQN TSQ.

## Enqueue Requirements

The Sterling Gentran:Viewpoint system also makes use of CICS Enqueues to serialize various operations within the CICS region. Their names are:

Enqueue Name
GENTRAN- <i>sim</i> itemtagnum ENQ
GENTRAN- <i>sim</i> COMM PROC ENQ
GENTRAN- <i>sim</i> POST PROC ENQ
GEMTRAN- <i>sim</i> VP ENQ
GENTRAN- <i>sim</i> VPSQ ENQ
GENTRAN- <i>sim</i> VSQN ENQ
GENTRAN- <i>sim</i> VTMQ ENQ
GENTRAN- <i>sim</i> X690 ENQ

*sim* is a 3-character System Image ID of the Sterling Gentran:Viewpoint system.

## CICS Recovery Requirements

The Sterling Gentran:Viewpoint system does not use standard CICS transaction logging, dynamic transaction backout and emergency restart facilities. The Sterling Gentran:Viewpoint CICS Resources must not reflect the use of these facilities.

## CICS Resource Requirements

The CICS Resource Definitions, required for Sterling Gentran:Viewpoint, are described here.

**Note:** The entries described here are in addition to the IBM® Sterling Gentran:Basic® and Sterling Gentran:Plus (if applicable) or Sterling Gentran:Realtime (if applicable) system entries.

### *File Resource Definitions*

Member VPTRDOF contains definitions for all Sterling Gentran:Viewpoint files.

#### **Notes:**

1. The first three characters of the FILE must reflect the "system image" being used. For more information, refer to the "Multiple System Images" section later in this chapter.
2. **For users not integrating communications**, the file entries may be deleted for the following files:
  - EDIVCQ
  - EDIVPPX
  - EDICFC
  - EDICXRF

### *Transaction Resource Definitions*

Member VPTRDOT contains definitions for all Sterling Gentran:Viewpoint CICS transactions.

**Notes:**

1. The first three characters of the Transaction IDs must reflect the "system image" being used. For more information, refer to the "Multiple System Images" section later in this chapter.
2. Ensure the transaction IDs have security authorization to run as background tasks.
3. **For users not integrating communications**, the entry for the Sterling Gentran:Viewpoint Communications Post Processor (Transaction ID – EDIY) may be deleted.

### *Program and Mapset Resource Definitions*

Member VPTRDOPM contains definitions for all Sterling Gentran:Viewpoint programs.

**Notes:**

1. The first three characters of the program names must reflect the "program image" being used. For more information refer to the "CICS Program Image" section later in this chapter.
2. **For users not integrating communications**, the entries for the Sterling Gentran:Viewpoint programs, used to monitor communications, may be deleted.

### *Program List Table (PLT) Entries*

A program is provided (EDIVPLT) which can be included in the PLT to automatically start the Sterling Gentran:Viewpoint Online Scanner when the CICS region is started. If this option is used the CICS Table Entries in member VPTPLT should be included in your system's DFHPLT entries.

For more information on the PLT refer the "PLT Automatic Start-Up" section later in this chapter.

## CICS Region Configuration Options

The Sterling Gentran:Viewpoint Online system provides several options to help you configure your CICS region:

- Multiple System Images (per CICS region)
- CICS Program Image
- PLT Automatic Startup

### Multiple System Images

The System Image feature allows multiple images of Sterling Gentran:Viewpoint to be run in one CICS region. When this feature is used in Sterling Gentran:Viewpoint, it must also be used in your Sterling Gentran:Basic system. Refer to the *IBM® Sterling Gentran:Viewpoint® for z/OS® Release 6.6 Installation Guide*, “System Image and Program Image Features” appendix for more information on the **System Image Feature**.

### CICS Program Image

The Program Image feature allows different system images of Sterling Gentran:Viewpoint, on different releases of Sterling Gentran:Viewpoint software, to be run in the same CICS region. Refer to the *IBM® Sterling Gentran:Viewpoint® for z/OS® Release 6.6 Installation Guide*, “System Image and Program Image Features” appendix for more information on the **Program Image Feature**.

### PLT Automatic Start-Up

The CICS Program List Table (PLT) can be used to automatically start the Sterling Gentran:Viewpoint Scanner when the CICS region is started. If the default System Image ID of “EDI” is used, the Automatic Sterling Gentran:Viewpoint System Start-Up program (EDIVPLT) can be used by including an entry for it in the PLT. If the default System Image ID is not being used, the EDIVPLT program, in the GENTRAN.V6X6.VPT.UTILITY.SOURCE library, may be modified to “START” the Sterling Gentran:Viewpoint Scanner program with the TransID corresponding to the desired System Image ID.

## CICS Program Descriptions

Descriptions of the online Sterling Gentran:Viewpoint programs are provided in this section.

See the *IBM® Sterling Gentran:Viewpoint® for z/OS® Release 6.6 User Guide*, Chapter 5, “Screen Descriptions,” for screen flow diagrams.

They are organized, by program, under the following headings:

### *CICS Foreground Programs*

The following table describes CICS foreground programs.

<b>Program</b>	<b>Description</b>
EDIX600	Sterling Gentran:Viewpoint Main Menu
EDIX601	Extended System Management Menu
EDIX602	Sterling Tracking Point Directory
EDIX603	Sterling Tracking Point Definition
EDIX604	System Message Control
EDIX605	Status Control
EDIX606	Remote ID Control (Sterling Gentran:Plus only)
EDIX607	Functional Area Control
EDIX608	Maintenance/Inquiry Options Directory
EDIX609	Maintenance/Inquiry Options Definition
EDIX610	User Tracking Point Directory (Tracking Management Only)
EDIX611	User Tracking Point Definition (Tracking Management Only)
EDIX620	Exception Management Menu
EDIX621	Exception Profile Directory
EDIX622	Exception Profile Definition
EDIX623	Exception Capture Directory
EDIX624	Exception Capture Definition
EDIX625	Exception Action Directory
EDIX626	Exception Action Definition
EDIX627	User Message Directory
EDIX628	User Message Definition
EDIX629	User Procedure Directory
EDIX630	User Procedure Definition



Program	Description
EDIX631	Usage Cross Reference
EDIX645	Exception Inquiry Menu
EDIX646	Recipient Directory
EDIX647	Recipient Detail
EDIX648	Exception List
EDIX649	Exception Detail
EDIX650	Exception Message List
EDIX651	Exception Data Display – Application
EDIX652	Exception History
EDIX653	Exception History – 2
EDIX654	Exception History Update
EDIX655	Exception Data Display – EDI
EDIX662	User Message Display
EDIX663	User Procedure Display
EDIX685	System Options
EDIX686	Staging Temporary Storage Queue Directory
EDIX688	Sterling Gentran:Viewpoint Online Log Display
<b>Tracking Management only:</b>	
EDIX700	Tracking Management Menu
EDIX701	Query Directory
EDIX702	Query Request
EDIX703	Extended Search Condition
EDIX710	Item Status History
EDIX711	Item Reference History
EDIX712	Item Process Detail
EDIX715	Item Message List
EDIX716	Item Data Display – Application
EDIX717	Item Data Display – EDI
EDIX718	Item Exception Status

Sterling Gentran:Plus users only:	
EDIX402	Interchange Detail
EDIX403	Interchange Line Detail

### *CICS Background Programs*

The following table describes CICS background programs.

Program	Description
EDIVPLT	Automatic System Start-Up
EDIVTOGL	System Status Toggle Program
EDIX690	Sterling Gentran:Viewpoint Scanner
EDIX691	Staging Post Processor
EDIX692	Communications Post Processor (Sterling Gentran:Plus only)
EDIX950	Prompt Processor
EDIX960	Job Submission Processor
EDIX970	Online User Gateway (Tracking Management only)
EDIX980	Online Gateway (Sterling Gentran:Realtime only)
EDIZxxx	Sterling Gentran:Viewpoint BMS Maps

## Sterling Gentran:Viewpoint Main Menu (EDIX600)

### Purpose

The Sterling Gentran:Viewpoint Main Menu allows the user to select one of the Sterling Gentran:Viewpoint options for which they are authorized.

### Operation

The Sterling Gentran:Viewpoint Main Menu is invoked by the Sterling Gentran Main Menu Program (EDIX001).

### File Access

File Description	DDname	File Access
Profile File	EDIVP	Read and browse.
Configuration File	EDICFG	Read.

## **Extended System Management Menu (EDIX601)**

### **Purpose**

The Extended System Management Menu allows you to select any of the Sterling Gentran:Viewpoint's Extended System Management options.

### **Operation**

The Extended System Management Menu is invoked by the Sterling Gentran:Viewpoint Main Menu (EDIX600).

### **File Access**

None.

## Sterling Tracking Point Directory (EDIX602)

### Purpose

The Sterling Tracking Point Directory lists all Sterling Tracking Point Definitions. A Tracking Point Definition can be selected from this list for display or update.

### Operation

The Sterling Tracking Point Directory is invoked by the Extended System Management Menu (EDIX601).

### File Access

File Description	DDname	File Access
Profile File	EDIVP	Read, browse, and update.

## Sterling Tracking Point Definition (EDIX603)

### Purpose

The Sterling Tracking Point Definition allows you to define a new Sterling Tracking Point to Sterling Gentran:Viewpoint, or update an existing definition. From this screen you can define System Message Control and Status Control for Sterling Gentran:Basic or Sterling Gentran:Realtime tracking points, Remote ID Control for Sterling Connect tracking points, and Order By Field Control.

### Operation

The Sterling Tracking Point Definition is invoked by the Extended System Management Menu (EDIX601), or the Sterling Tracking Point Directory (EDIX602).

### File Access

File Description	DDname	File Access
Profile File	EDIVP	Read, browse, write, and update.

## System Message Control (EDIX604)

### Purpose

The System Message Control screen allows you to select the messages which should be enabled for monitoring. This feature is available for all Sterling Gentran:Basic and Sterling Gentran:Realtime tracking points.

### Operation

The System Message Control is invoked by the Tracking Point Definition (EDIX603).

### File Access

File Description	DDname	File Access
Profile File	EDIVP	Read and update.

## Status Control (EDIX605)

### Purpose

The Status Control screen allows you to select the Status fields which should be enabled for monitoring. This feature is available for all Sterling Gentran:Basic and Sterling Gentran:Realtime tracking points.

### Operation

The Status Control is invoked by the Tracking Point Definition (EDIX603).

### File Access

File Description	DDname	File Access
Profile File	EDIVP	Read and update.



## Remote ID Control (EDIX606)

### Purpose

The Remote ID Control screen allows you to select the Remote IDs which should be enabled for monitoring. This feature is only available for Sterling Connect tracking points.

### Operation

The Remote ID Control is invoked by the Tracking Point Definition (EDIX603).

### File Access

File Description	DDname	File Access
Profile File	EDIVP	Read and update.

## Functional Area Control (EDIX607)

### Purpose

Functional Area Control allows you to enable and disable Sterling Gentran:Viewpoint online functions.

### Operation

The Functional Area Control is invoked by the Extended System Management Menu (EDIX601).

### File Access

File Description	DDname	File Access
Profile File	EDIVP	Read and update.

## Maintenance/Inquiry Options Directory (EDIX608)

### Purpose

The Maintenance/Inquiry Options Directory lists all Maintenance/Inquiry Definitions. A Maintenance/Inquiry Definition can be selected for display or update.

### Operation

The Maintenance/Inquiry Options Control is invoked by the Extended System Management Menu (EDIX601).

### File Access

File Description	DDname	File Access
Profile File	EDIVP	Read, browse, and update.

## Maintenance/Inquiry Options Definition (EDIX609)

### Purpose

The Maintenance/Inquiry Options Definition allows you to define a new set of Maintenance/Inquiry Options or update an existing definition.

### Operation

The Maintenance/Inquiry Options Definition is invoked by the Extended System Management Menu (EDIX601), or the Maintenance Options Directory (EDIX608).

### File Access

File Description	DDname	File Access
Profile File	EDIVP	Read, browse, write, and update.

## User Tracking Point Directory (EDIX610)

### Purpose

The User Tracking Point Directory lists all User Tracking Points. A User Tracking Point can be selected from this list for display, update, or delete. This is only available with the Tracking Management Module.

### Operation

The User Tracking Point Directory is invoked by the Extended System Management Menu (EDIX601).

### File Access

File Description	DDname	File Access
Profile File	EDIVP	Read, browse, write, and update.

## User Tracking Point Definition (EDIX611)

### Purpose

The User Tracking Point Definition allows you to define a User Tracking Point or update an existing User Tracking Point Definition. This is only available with the Tracking Management module.

### Operation

The User Tracking Point Definition is invoked by the Extended System Management Menu (EDIX601), or the User Tracking Point Directory (EDIX610).

### File Access

File Description	DDname	File Access
Profile File	EDIVP	Read, browse, write, and update.

## Exception Management Menu (EDIX620)

### Purpose

The Exception Management Menu allows you to select any of the Exception Management options.

### Operation

The Exception Management Menu is invoked by the Sterling Gentran:Viewpoint Main Menu (EDIX600).

### File Access

None.

## Exception Profile Directory (EDIX621)

### Purpose

The Exception Profile Directory lists all Exception Profile Definitions. An Exception Profile Definition can be selected, from this list, to display or update.

### Operation

The Exception Profile Directory is invoked by the Exception Management Menu (EDIX620).

### File Access

File Description	DDname	File Access
Profile File	EDIVP	Read, browse, write, and update.



## Exception Profile Definition (EDIX622)

### Purpose

The Exception Profile Definition screen allows you to define and update Exception Profiles.

### Operation

The Exception Profile Definition is invoked by the Exception Management Menu (EDIX620), the Exception Profile Directory (EDIX621), or the Usage Cross Reference (EDIX631).

### File Access

File Description	DDname	File Access
Profile File	EDIVP	Read, browse, write, and update.
Repository File	EDIVR	Read, write, and update.

## Exception Capture Directory (EDIX623)

### Purpose

The Exception Capture Directory lists all Exception Capture Definitions. An Exception Capture Definition can be selected from this list for display or update.

### Operation

The Exception Capture Directory is invoked by the Exception Management Menu (EDIX620).

### File Access

File Description	DDname	File Access
Profile File	EDIVP	Read, browse, and update.

## Exception Capture Definition (EDIX624)

### Purpose

The Exception Capture Definition screen allows you to define a new set of Exception Capture rules.

### Operation

The Exception Capture Definition is invoked by the Exception Management Menu (EDIX620), the Exception Capture Directory (EDIX623), or the Usage Cross Reference (EDIX631).

### File Access

File Description	DDname	File Access
Profile File	EDIVP	Read, browse, write, and update.

## Exception Action Directory (EDIX625)

### Purpose

The Exception Action Directory provides a list of all Exception Action Definitions. An Exception Action Definition can be selected from this list for display or update.

### Operation

The Exception Action Directory is invoked by the Exception Management Menu (EDIX620).

### File Access

File Description	DDname	File Access
Profile File	EDIVP	Read, browse, and update.

## Exception Action Definition (EDIX626)

### Purpose

The Exception Action Definition screen allows you to define the action that will take place when an exception occurs.

### Operation

The Exception Action Definition is invoked by the Exception Management Menu (EDIX620), the Exception Action Directory (EDIX625), or the Usage Cross Reference (EDIX631).

### File Access

File Description	DDname	File Access
Profile File	EDIVP	Read, browse, write, and update.

## User Message Directory (EDIX627)

### Purpose

The User Message Directory provides a list of all User Message Definitions. A User Message may be selected from this list for display or update.

### Operation

The User Message Directory is invoked by the Exception Management Menu (EDIX620).

### File Access

File Description	DDname	File Access
Profile File	EDIVP	Read, browse, and update.

## User Message Definition (EDIX628)

### Purpose

The User Message Definition screen allows you to define or update a User Message.

### Operation

The User Message Definition is invoked by the Exception Management Menu (EDIX620), or the User Message Directory (EDIX627).

### File Access

File Description	DDname	File Access
Profile File	EDIVP	Read, browse, write, and update.

## User Procedure Directory (EDIX629)

### Purpose

The User Procedure Directory provides a list of all User Procedure Definitions. A User Procedure Definition may be selected from this list for display or update.

### Operation

The User Procedure Directory is invoked by the Exception Management Menu (EDIX620).

### File Access

File Description	DDname	File Access
Profile File	EDIVP	Read, browse, and update.



## User Procedure Definition (EDIX630)

### Purpose

The User Procedure Definition screen allows you to define or update a User Procedure.

### Operation

The User Procedure Definition is invoked by the Exception Management Menu (EDIX620), or the User Procedure Directory (EDIX629).

### File Access

File Description	DDname	File Access
Profile File	EDIVP	Read, browse, write, and update.

## Usage Cross Reference (EDIX631)

### Purpose

The Usage Cross Reference screen allows you to display a list of Exception Profiles that use a specified Exception Capture ID, Recipient ID, Exception Action ID, User Message ID, User Procedure ID, Batch Action, or OnLine Action.

### Operation

The Usage Cross Reference is invoked by the Exception Management Menu (EDIX620), the Exception Capture Directory (EDIX623), the Exception Capture Definition (EDIX624), the Exception Action Directory (EDIX625), the Exception Action Definition (EDIX626), the User Message Directory (EDIX627), the User Message Definition (EDIX628), the User Procedure Directory (EDIX629), or the User Procedure Definition (EDIX630).

### File Access

File Description	DDname	File Access
Profile File	EDIVP	Read and browse.

## Exception Inquiry Menu (EDIX645)

### Purpose

The Exception Inquiry Menu allows you to select any of the Exception Inquiry options.

### Operation

The Exception Inquiry Menu is invoked by the Sterling Gentran:Viewpoint Main Menu (EDIX600).

### File Access

None.

## Recipient Directory (EDIX646)

### Purpose

The Recipient Directory provides a list of all Recipient IDs, and any outstanding exceptions for each recipient. A Recipient ID may be selected from this list in order to obtain a list of all exceptions for that ID.

### Operation

The Recipient Directory is invoked by the Exception Inquiry Menu (EDIX645).

### File Access

File Description	DDname	File Access
Repository File	EDIVR	Read, browse, and update.

## Recipient Detail (EDIX647)

### Purpose

The Recipient Detail provides a display of the exception counts, by status, for a recipient. The Exception List screen may also be displayed from this screen.

### Operation

The Recipient Detail is invoked by the Recipient Directory (EDIX646), Exception List (EDIX648), or the Exception Detail (EDIX649).

### File Access

File Description	DDname	File Access
Repository File	EDIVR	Read.

## Exception List (EDIX648)

### Purpose

The Exception List screen provides a list of all the exceptions that have been captured for a Recipient. An Exception that requires updating can be selected from this list.

### Operation

The Exception List is invoked by the Exception Inquiry (EDIX645), the Recipient Directory (EDIX646), or the Recipient Detail (EDIX647).

### File Access

File Description	DDname	File Access
Repository File	EDIVR	Read, browse, and update.

## Exception Detail (EDIX649)

### Purpose

The Exception Detail screen provides detailed information for an exception. An exception may be selected from this list for update.

### Operation

The Exception Detail is invoked by the Exception List (EDIX648), Exception Message List (EDIX650), Exception Data Display (EDIX651/EDIX655), Exception History (EDIX652), Exception History – 2 (EDIX653), User Message Display (EDIX662), User Procedure Display (EDIX663), or the Item Exception Status (EDIX718).

### File Access

File Description	DDname	File Access
Repository File	EDIVR	Read and update.
Inbound EDI Databank Directory	EDIIEA	Read.
Outbound EDI Databank Directory	EDIOEA	Read.
Inbound Application Databank Directory	EDIIAA	Read.
Outbound Application Databank Directory	EDIOAA	Read.
Sterling Gentran:Realtime Inbound EDI Databank Directory	EDIRIEA	Read.
Sterling Gentran:Realtime Outbound EDI Databank Directory	EDIROEA	Read.
Sterling Gentran:Realtime Inbound Application Databank Directory	EDIRIAA	Read.
Sterling Gentran:Realtime Outbound Application Databank Directory	EDIROAA	Read.

## Exception Message List (EDIX650)

### Purpose

The Exception Message List screen allows you to display the exception in context with any associated system messages.

### Operation

The Exception Message List is invoked by the Exception List (EDIX648), Exception Detail (EDIX649), Exception Data Display (EDIX651/EDIX655), Exception History (EDIX652), Exception History – 2 (EDIX653), User Message Display (EDIX662), or the User Procedure Display (EDIX663).

### File Access

File Description	DDname	File Access
Repository File	EDIVR	Read and browse.
Profile File	EDIVP	Read.



## Exception Data Display – Application (EDIX651)

### Purpose

The Exception Data Display screen allows you to view the actual application data that was being processed when the exception occurred, and any associated system messages and user messages. The Exception Data Display is only available for Sterling Gentran exceptions.

### Operation

The Exception Data Display (Application) is invoked by the Exception List (EDIX648), Exception Detail (EDIX649), Exception Message List (EDIX650), Exception History (EDIX652), Exception History – 2 (EDIX653), User Message Display (EDIX662), or the User Procedure Display (EDIX663).

### File Access

File Description	DDname	File Access
Repository File	EDIVR	Read.
Profile File	EDIVP	Read and browse.
Outbound Application Databank Directory	EDIOAA	Read and browse.
Outbound Application Databank Pending	EDIOAP	Read and browse.
Outbound Application Databank Message Store	EDIOAS	Read and browse.
Inbound Application Databank Directory	EDIIAA	Read and browse.
Inbound Application Databank Pending	EDIIAP	Read and browse.
Inbound Application Databank Message Store	EDIIAS	Read and browse.
Sterling Gentran:Realtime Outbound Application Databank Directory	EDIROAA	Read and browse.
Sterling Gentran:Realtime Outbound Application Databank Message Store	EDIROAS	Read and browse.
Sterling Gentran:Realtime Inbound Application Databank Directory	EDIRIAA	Read and browse.
Sterling Gentran:Realtime Inbound Application Databank Message Store	EDIRIAS	Read and browse.

## Exception History (EDIX652)

### Purpose

The Exception History screen displays a history of activities against an exception.

### Operation

The Exception History is invoked by the Exception List (EDIX648), Exception Detail (EDIX649), Exception Message List (EDIX650), Exception Data Display (EDIX651/EDIX655), User Message Display (EDIX662), or the User Procedure Display (EDIX663).

### File Access

File Description	DDname	File Access
Repository File	EDIVR	Read and browse.
Security File	EDISEC	Read and browse.

## Exception History – 2 (EDIX653)

### Purpose

The Exception History – 2 provides a display of the second and subsequent screens of previous history of activities against an exception.

### Operation

The Exception History – Screen Two is invoked by the Exception History (EDIX652).

### File Access

File Description	DDname	File Access
Repository File	EDIVR	Read and browse.
Security File	EDISEC	Read and browse.

## Exception History Update (EDIX654)

### Purpose

The Exception History Update screen is used to write entries to an exception's history. An exception may be updated to change the status to review, transfer, or close an exception, and enter a note with the entry.

### Operation

The Exception History Update is invoked by the Exception History (EDIX652/EDIX653).

### File Access

File Description	DDname	File Access
Repository File	EDIVR	Read, browse, write, update, and delete.
Security File	EDISEC	Read and browse.

## Exception Data Display – EDI (EDIX655)

### Purpose

The Exception Data Display screen allows you to view the actual EDI data that was being processed when the exception occurred, and any associated system messages and user messages. The Exception Data Display is only available for Sterling Gentran exceptions.

### Operation

The Exception Data Display – EDI is invoked by the Exception List (EDIX648), Exception Detail (EDIX649), Exception Message List (EDIX650), Exception History (EDIX652), Exception History – 2 (EDIX653), User Message Display (EDIX662), or the User Procedure Display (EDIX663).

### File Access

File Description	DDname	File Access
Repository File	EDIVR	Read.
Profile File	EDIVP	Read and browse.
Inbound EDI Databank Directory	EDIIEA	Read and browse.
Inbound EDI Databank Pending	EDIIEP	Read and browse.
Inbound EDI Databank Message Store	EDIIES	Read and browse.
Outbound EDI Databank Directory	EDIOEA	Read and browse.
Outbound EDI Databank Pending	EDIOEP	Read and browse.
Outbound EDI Databank Message Store	EDIOES	Read and browse.
Sterling Gentran:Realtime Inbound EDI Databank Directory	EDIRIEA	Read and browse.
Sterling Gentran:Realtime Inbound EDI Databank Message Store	EDIRIES	Read and browse.
Sterling Gentran:Realtime Outbound EDI Databank Directory	EDIROEA	Read and browse.
Sterling Gentran:Realtime Outbound EDI Databank Message Store	EDIROES	Read and browse.

## User Message Display (EDIX662)

### Purpose

The User Message Display screen displays a user defined explanation which is associated with an exception.

### Operation

The User Message Display is invoked by the Exception List (EDIX648), Exception Detail (EDIX649), Exception Message List (EDIX650), Exception Data Display (EDIX651 and EDIX655), or the User Procedure Display (EDIX663).

### File Access

File Description	DDname	File Access
Repository File	EDIVR	Read.
Profile File	EDIVP	Read.

## User Procedure Display (EDIX663)

### Purpose

The User Procedure Display screen displays user defined actions which can be used in the resolution of the exception.

### Operation

The User Procedure Display is invoked by the Exception List (EDIX648), Exception Detail (EDIX649), Exception Message List (EDIX650), Exception Data Display (EDIX651 and EDIX655), or the User Procedure Display (EDIX663).

### File Access

File Description	DDname	File Access
Repository File	EDIVR	Read.
Profile File	EDIVP	Read.

## System Options (EDIX685)

### Purpose

The System Options screen displays the configuration options for Sterling Gentran:Viewpoint.

### Operation

The System Options is invoked by the Sterling Gentran:Viewpoint Main Menu (EDIX600).

### File Access

File Description	DDname	File Access
Profile File	EDIVP	Read and update.



## Staging Temporary Storage Queue Directory (EDIX686)

### Purpose

The Staging Temporary Storage Queue Directory lists all Staging Temporary Storage Queues. A Staging Temporary Storage Queue can be selected from this list for delete or update.

### Operation

The Temporary Staging Queue Directory is invoked by the System Options screen (EDIX685).

### File Access

File Description	DDname	File Access
Profile File	EDIVP	Read, update, and delete.
Staging Temporary Storage Queues	EDIVnnnn	Read and delete.

## Sterling Gentran:Viewpoint OnLine Log Display (EDIX688)

### Purpose

The Sterling Gentran:Viewpoint OnLine Log Display screen allows you to monitor the activity of Sterling Gentran:Viewpoint.

### Operation

The Sterling Gentran:Viewpoint OnLine Log Display is invoked by the Sterling Gentran:Viewpoint Main Menu (EDIX600).

### File Access

File Description	DDname	File Access
OnLine Log File	EDIOLF	Read and browse.

## Tracking Management Menu (EDIX700)

### Purpose

The Tracking Management Menu allows you to select any Sterling Gentran:Viewpoint Tracking Management options.

### Operation

The Tracking Management Menu is invoked by the Sterling Gentran:Viewpoint Main Menu (EDIX600).

### File Access

None.

## Query Directory (EDIX701)

### Purpose

The Query Directory lists all Query ID definitions. This list allows you to select a Query ID for display or update.

### Operation

The Query Directory is invoked by the Tracking Management Menu (EDIX700).

### File Access

File Description	DDname	File Access
Profile File	EDIVP	Read, browse, and update.

---

## Query Request (EDIX702)

### Purpose

The Query Request allows you to define a new query or update an existing definition. The Query Request also lists all of the items which satisfy the search condition of a query.

### Operation

The Query Request screen is invoked by the Sterling Gentran:Viewpoint Tracking Management Menu (EDIX700).

### File Access

File Description	DDname	File Access
Profile File	EDIVP	Read, browse, write, and update.
Master Index File	EDIVM	Read and browse.
Repository File	EDIVR	Read.

## Extended Search Condition (EDIX703)

### Purpose

The Extended Search Condition screen allows you to define additional Search Condition rules, to further qualify the search fields on the Query Request screen.

### Operation

The Extended Search Condition is invoked by the Query Request (EDIX702).

### File Access

File Description	DDname	File Access
Profile File	EDIVP	Read, browse, and update.
Repository File	EDIVR	Read.

---

## Item Status History (EDIX710)

### Purpose

The Item Status History screen displays a history of statuses for an item monitored by Tracking Management.

### Operation

The Item Status History is invoked by the Query Request (EDIX702), Item Reference History (EDIX711), Item Process Detail (EDIX712), Item Message List (EDIX715), Item Data Display (EDIX716 and EDIX717), or the Item Exception Status (EDIX718).

### File Access

File Description	DDname	File Access
Master Index File	EDIVM	Read and browse.
Profile File	EDIVP	Read.
Repository File	EDIVR	Read.

## Item Reference History (EDIX711)

### Purpose

The Item Reference History screen displays a history of the references assigned to an item monitored by Tracking Management.

### Operation

Item Reference History is invoked by Query Request (EDIX702), Item Status History (EDIX710), Item Process Detail (EDIX712), Item Message List (EDIX715), Item Data Display (EDIX716 and EDIX717), or the Item Exception Status (EDIX718).

### File Access

File Description	DDname	File Access
Master Index File	EDIVM	Read and browse.
Profile File	EDIVP	Read.
Repository File	EDIVR	Read.
Inbound EDI Databank Directory	EDIIEA	Read.
Inbound Application Databank Directory	EDIIAA	Read.
Outbound EDI Databank Directory	EDIOEA	Read.
Outbound Application Databank Directory	EDIOAA	Read.
Sterling Gentran:Realtime Inbound EDI Databank Directory	EDIRIEA	Read.
Sterling Gentran:Realtime Outbound EDI Databank Directory	EDIROEA	Read.
Sterling Gentran:Realtime Inbound Application Databank Directory	EDIRIAA	Read.
Sterling Gentran:Realtime Outbound Application Databank Directory	EDIROAA	Read.



## Item Process Detail (EDIX712)

### Purpose

The Item Process Detail screen displays detailed item information for a single tracking point that has been processed by the item.

### Operation

Item Process Detail is invoked by the Query Request (EDIX702), Item Status History (EDIX710), Item Reference History (EDIX711), Item Message List (EDIX715), Item Data Display (EDIX716 and EDIX717), or the Item Exception Status (EDIX718).

### File Access

File Description	DDname	File Access
Master Index File	EDIVM	Read.
Profile File	EDIVP	Read.
Repository File	EDIVR	Read and browse.
Inbound EDI Databank Directory	EDIIEA	Read.
Inbound Application Databank Directory	EDIAA	Read.
Outbound EDI Databank Directory	EDIOEA	Read.
Outbound Application Databank Directory	EDIOAA	Read.
Sterling Gentran:Realtime Inbound EDI Databank Directory	EDIRIEA	Read.
Sterling Gentran:Realtime Outbound EDI Databank Directory	EDIROEA	Read.
Sterling Gentran:Realtime Inbound Application Databank Directory	EDIRIAA	Read.
Sterling Gentran:Realtime Outbound Application Databank Directory	EDIROAA	Read.

## Item Message List (EDIX715)

### Purpose

The Item Message List screen displays all system and user messages associated with an item.

### Operation

Item Message List is invoked by the Item Status History (EDIX710), Item Reference History (EDIX711), Item Process Detail (EDIX712), Item Data Display (EDIX716 and EDIX717), or the Item Exception Status (EDIX718).

### File Access

File Description	DDname	File Access
Profile File	EDIVP	Read.
Repository File	EDIVR	Read and browse.
Inbound Application Databank Directory	EDIIAA	Read.
Inbound EDI Databank Directory	EDIIEA	Read.
Outbound Application Databank Directory	EDIOAA	Read.
Outbound EDI Databank Directory	EDIOEA	Read.
Sterling Gentran:Realtime Inbound EDI Databank Directory	EDIRIEA	Read.
Sterling Gentran:Realtime Outbound EDI Databank Directory	EDIROEA	Read.
Sterling Gentran:Realtime Inbound Application Databank Directory	EDIRIAA	Read.
Sterling Gentran:Realtime Outbound Application Databank Directory	EDIROAA	Read.

## Item Data Display – Application (EDIX716)

### Purpose

The Item Data Display screen allows you to view the actual application data that was being processed, and any associated system messages for the item. The Item Data Display screen is only available for Sterling Gentran item types.

### Operation

Item Data Display is invoked by the Item Status History (EDIX710), Item Reference History (EDIX711), Item Process Detail (EDIX712), Item Message List (EDIX715), or the Item Exception Status (EDIX718).

### File Access

File Description	DDname	File Access
Profile File	EDIVP	Read.
Repository File	EDIVR	Read and browse.
Inbound Application Databank Directory	EDIIAA	Read.
Inbound Application Databank Message Store	EDIIAS	Read and browse.
Inbound Application Databank Pending	EDIIAP	Read and browse.
Outbound Application Databank Directory	EDIOAA	Read.
Outbound Application Databank Message Store	EDIOAS	Read and browse.
Outbound Application Databank Pending	EDIOAP	Read and browse.
Sterling Gentran:Realtime Outbound Application Databank Directory	EDIROAA	Read and browse.
Sterling Gentran:Realtime Outbound Application Databank Message Store	EDIROAS	Read and browse.
Sterling Gentran:Realtime Inbound Application Databank Directory	EDIRIAA	Read and browse.
Sterling Gentran:Realtime Inbound Application Databank Message Store	EDIRIAS	Read and browse.

## Item Data Display – EDI (EDIX717)

### Purpose

The Item Data Display screen allows you to view the actual EDI data that was being processed, and any associated system messages for the item. The Item Data Display screen is only available for Sterling Gentran item types.

### Operation

Item Data Display is invoked by the Item Status History (EDIX710), Item Reference History (EDIX711), Item Process Detail (EDIX712), Item Message List (EDIX715), or the Item Exception Status (EDIX718).

### File Access

File Description	DDname	File Access
Profile File	EDIVP	Read.
Repository File	EDIVR	Read and browse.
Inbound EDI Databank Directory	EDIIEA	Read.
Inbound EDI Databank Pending	EDIIEP	Read.
Inbound EDI Databank Message Store	EDIIES	Read and browse.
Outbound EDI Databank Directory	EDIOEA	Read.
Outbound EDI Databank Pending	EDIOEP	Read and browse.
Outbound EDI Databank Message Store	EDIOES	Read and browse.
Sterling Gentran:Realtime Inbound EDI Databank Directory	EDIRIEA	Read and browse.
Sterling Gentran:Realtime Inbound EDI Databank Message Store	EDIRIES	Read and browse.
Sterling Gentran:Realtime Outbound EDI Databank Directory	EDIROEA	Read and browse.
Sterling Gentran:Realtime Outbound EDI Databank Message Store	EDIROES	Read and browse.

---

## Item Exception Status (EDIX718)

### Purpose

The Item Exception Status screen displays all exceptions that are currently being tracked by Exception Management for that item.

### Operation

Item Exception Status is invoked by the Item Status History (EDIX710), Item Reference History (EDIX711), Item Process Detail (EDIX712), Item Message List (EDIX715), Item Data Display (EDIX716 and EDIX717), or the Exception Detail (EDIX649).

### File Access

File Description	DDname	File Access
Master Index File	EDIVM	Read and browse.
Profile File	EDIVP	Read.
Repository File	EDIVR	Read and browse.

## Interchange Detail (EDIX402)

### Purpose

The Interchange Detail screen allows you to view the data on the communications data queue that was processed for communication batch items.

This screen is only available for Sterling Gentran:Plus users.

### Operation

The Interchange Detail is invoked by the Exception List (EDIX648), Exception Detail (EDIX649), Exception Message List (EDIX650), Exception History (EDIX652), Exception History – 2 (EDIX653), User Message Display (EDIX662), User Procedure Display (EDIX663), Item Status History (EDIX710), Item Reference History (EDIX711), Item Process Detail (EDIX712), Item Message List (EDIX715), or the Item Exception Status (EDIX718).

### File Access

Various Sterling Connect files.

## Interchange Line Detail (EDIX403)

### Purpose

The Interchange Line Detail screen allows you to view the data on the communications data queue that was processed for communication batch items.

This screen is only available for Sterling Gentran:Plus users.

### Operation

The Interchange Line Detail is invoked by the Interchange Detail (EDIX402).

### File Access

Various Sterling Connect files.

## Automatic System Start-Up (EDIVPLT)

### Purpose

The Automatic System Start-Up program is used to start the Sterling Gentran:Viewpoint system during CICS initialization.

### Operation

This program is invoked by the CICS Program List Table (PLT), and issues a CICS START for TRANSID "EDIV".

### File Access

None.



## System Status Toggle Program (EDIVTOGL)

### Purpose

The System Status Toggle Program allows you to start, stop, or toggle the Sterling Gentran:Viewpoint Scanner (EDIX690). This process allows you to shut the system down gracefully and allow active processing to complete before the system is disabled. This process can also be used to START (enable) a system that has been stopped (disabled).

### Operation

The System Status Toggle program is executed by the EDIW transaction. This program is used by batch processes to shut down the system for maintenance and then restart the system after the maintenance has been performed. The customer adds two steps around their maintenance job. Each step executes a utility program that starts the EDIW transaction in the CICS region.

**Note:** The specific utility program is site dependant. You should consult your system programmers to determine the utility to use.

To ensure shutdown and restart of the system, parameters can be included with the transaction.

If you enter...	The system status will...
EDIW-X	always be changed to disabled and the system will be stopped.
EDIW-S	always be changed to enabled and the system will be started.
EDIW with no parameters	always toggle between disabled and enabled and the system will be stopped or started accordingly.

If you are a Sterling Gentran:Realtime user and you wish to coordinate the operation of both systems, there are also parameters that can accomplish this.

If you enter...	The system status for both systems will...
EDIW-D	always be changed to disabled and both systems will be stopped.
EDIW-E	always be changed to enabled and both systems will be started.
EDIW-B	always toggle between disabled and enabled and both systems will be stopped or started accordingly.

When both the Sterling Gentran:Realtime and Sterling Gentran:Viewpoint systems are stopped using this coordinated method, the Sterling Gentran:Viewpoint system will not be stopped until after the Sterling Gentran:Realtime system has been stopped. This will ensure that Sterling Gentran:Viewpoint will be able to process the activity that may be generated by Sterling Gentran:Realtime before it is stopped.

The Sterling Gentran:Viewpoint Scanner (EDIX690) performs the actual stopping or starting of the system. After the system status is changed, the EDIV transaction is started to invoke the Sterling Gentran:Viewpoint Scanner to complete the operation.

If the Sterling Gentran:Realtime system is also being stopped or started, the Online Scanner/Initiator (EDIEOSI) performs the actual stopping or starting of it. After the system status is changed, the EDII transaction is started to invoke the Online Scanner/Initiator to complete the operation.

## File Access

File Description	DDname	File Access
Profile File	EDIVP	Read and update.
Sterling Gentran:Viewpoint System TSQ	EDIVPSQ	Read and update.
Configuration TSQ	EDICFGQ	Read.
In-Core Control File	EDIICF	Read and update.
Online Control File	EDIOCF	Read and update.

---

## Sterling Gentran:Viewpoint Scanner (EDIX690)

### Purpose

The Sterling Gentran:Viewpoint Scanner initiates the Sterling Gentran:Viewpoint Post Processor for Staging Files and Staging Temporary Storage Queues which have data to be processed. The Sterling Gentran:Viewpoint Scanner also initiates the Communications Post Processor to re-format Sterling Connect log exit data into Staging format data.

### Operation

The Sterling Gentran:Viewpoint Scanner initiates itself at regular time intervals (the time interval is controlled by the “scan time” specified in the Sterling Gentran:Viewpoint Profile file). The Sterling Gentran:Viewpoint Scanner can be started using one of the following methods:

- specifying a Program List Table (PLT) entry.
- entering its TRANSID (EDIV) from a terminal.
- executing the System Status Toggle Program (EDIVTOGL) with the EDIW transaction from either a terminal or a batch job.
- using the F13=Start function on the Sterling Gentran:Viewpoint System Options screen (EDIM685).

If the Sterling Gentran:Viewpoint Scanner is re-started, previously initiated Sterling Gentran:Viewpoint Scanner tasks will detect this re-initialization and terminate.

The Sterling Gentran:Viewpoint scanner can be stopped using one of the following methods:

- changing the System Status field on the Sterling Gentran:Viewpoint System Options screen (EDIM685) to Disabled. The scanner will be stopped at the next scan interval.
- executing the System Status Toggle Program (EDIVTOGL) with the EDIW transaction from either a terminal or a batch job. The scanner will attempt to stop immediately, however if either a Post Processor (EDIX691) or a Communications Post Processor (EDIX692) is active, it will instead evaluate the Post Processor activity at the next scan interval while not initiating any additional Post Processors. This will continue until there is no Post Processor activity, at which time the scanner will be stopped.

If the System Status Toggle Program was invoked to also stop the Sterling Gentran:Realtime system, the Sterling Gentran:Viewpoint scanner will first initiate Post Processors for any Staging TSQs which have data to be processed. Then it will evaluate the Sterling Gentran:Realtime system to determine if it is stopped. If it is, the scanner will attempt to stop as described above. If the Sterling Gentran:Realtime system is not stopped, the scanner will evaluate the Sterling Gentran:Realtime system at the next scan interval and will continue to do so until the Sterling Gentran:Realtime system is stopped.

**File Access**

<b>File Description</b>	<b>DDname</b>	<b>File Access</b>
Configuration File	EDICFG	Read.
Profile File	EDIVP	Read, browse, and update.
Staging Files	EDIVSFn	Read, close, and open.
Staging Temporary Storage Queues	EDIVnnnn	Read.

## Sterling Gentran:Viewpoint Post Processor (EDIX691)

### Purpose

The Sterling Gentran:Viewpoint Post Processor processes the staging files, and staging temporary storage queues, based on Sterling Gentran:Viewpoint Profile information. For Exception Management, the Sterling Gentran:Viewpoint Post Processor is responsible for creating recipient information on the Repository, and for initiating Exception Actions. For Tracking Management, the Sterling Gentran:Viewpoint Post Processor is responsible for creating tracking records on the Repository and Master Index files.

### Operation

The Sterling Gentran:Viewpoint Post Processor is invoked by the Sterling Gentran:Viewpoint Scanner (EDIX690).

### File Access

File Description	DDname	File Access
Profile File	EDIVP	Read, browse, and update.
Repository File	EDIVR	Read, browse, update, and write.
Staging Files	EDIVSFn	Read.
Staging Temporary Storage Queue	EDIVnnnn	Read and delete.
Master Index File	EDIVM	Read, browse, update, and write (only required by Tracking Management).
Sterling Connect Cross Reference File	EDICXRF	Read and browse (only for Sterling Gentran:Plus users).

## Communications Post Processor (EDIX692)

### Purpose

The Communications Post Processor processes Sterling Connect log exit data from the Communications Queue File based on Sterling Gentran:Viewpoint Profile information. The log exit data is filtered and re-formatted into Staging Temporary Storage Queue(s).

This program is only available for Sterling Gentran:Plus users.

### Operation

The Communications Post Processor is invoked by the Sterling Gentran:Viewpoint Scanner (EDIX690).

### File Access

File Description	DDname	File Access
Communications Queue File	EDIVCQ	Read and update.
Profile File	EDIVP	Read, browse, and update.
Trace ID Cross Reference File	EDIVPPX	Read, browse, add, and update (only required by Tracking Management).
Online Trace ID File	EDIVTO	Read and update.
Staging Temporary Storage Queue	EDIVnnnn	Create, write, and update.
Sterling Connect Cross Reference File	EDICXRF	Read and browse.
Sterling Connect Failure Codes File	EDICFC	Read and browse.
Configuration File	EDICFG	Read.
Staging Queue Sequence Number Temporary Storage Queue	EDIVSQN	Create, read, write, and update.

## Prompt Processor (EDIX950)

### Purpose

The Prompt Processor displays a Prompt window to allow you to select a valid entry for a field.

### Operation

The Prompt Processor is invoked by the Sterling Gentran:Viewpoint online screen programs.

### File Access

File Description	DDname	File Access
Prompt File	EDIPRMP	Read.
Profiles File	EDIVP	Read.
Repository File	EDIVR	Read.

## Job Submission Processor (EDIX960)

### Purpose

The Job Submission program initiates batch processing by submitting JCL to the Internal Reader.

### Operation

The Job Submission function is invoked by any online function which initiates batch processing.

### File Access

File Description	DDname	File Access
JCL File	EDIJCL	Read.
Internal Reader DCT	EDIINT	Write.



---

## Online User Gateway (EDIX970)

### Purpose

The Online User Gateway is available only with the Tracking Management module. It provides the online user applications the ability to interface with the Sterling Gentran:Viewpoint Tracking Management system. For detailed information about the "User Online Gateway – EDIX970", refer to Chapter 4, "User Exits and APIs".

### Operation

The Online User Gateway is invoked by online user applications to pass data to the Sterling Gentran:Viewpoint Tracking Management system through CICS LINKs.

### File Access

File Description	DDname	File Access
Configuration File	EDICFG	Read and browse.
Profile File	EDIVP	Read, browse, and update.
Staging Temporary Storage Queue	EDIVnnnn	Read, write, and update.
Temporary Work File	EDIVTMQ	Read, browse, and delete.
Online Trace ID File	EDIVTO	Read and update.
Error Message and Control File	ERRCTL	Read and browse.

## Online Gateway (EDIX980)

### Purpose

The Sterling Gentran:Viewpoint Online Gateway is used to capture data from Sterling Gentran:Realtime online processes for Sterling Gentran:Viewpoint processing.

### Operation

The Sterling Gentran:Viewpoint Online Gateway is invoked by Sterling Gentran:Realtime online processes to pass data to the Sterling Gentran:Viewpoint system.

### File Access

File Description	DDname	File Access
Configuration File	EDICFG	Read and browse.
Profile File	EDIVP	Read, browse, and update.
Staging Temporary Storage Queue	EDIVnnnn	Read, write, and update.
Staging Queue Sequence Number Temporary Storage Queue	EDIVSQN	Create, read, write, and update.
Online Trace ID File	EDIVTO	Read and update.
Error Message and Control File	ERRCTL	Read and browse.

## Sterling Gentran:Viewpoint BMS Maps

### Purpose

The Sterling Gentran:Viewpoint BMS maps contain the BMS screens used by the Sterling Gentran:Viewpoint online programs.

### Operation

The screen maps, used by Sterling Gentran:Viewpoint programs, are as follows:

BMS Map	Program ID	Program Names
EDIZ600	EDIX600	Sterling Gentran:Viewpoint Main Menu
EDIZ601	EDIX601	Extended System Management Menu
EDIZ602	EDIX602	Sterling Tracking Point Directory
EDIZ603	EDIX603	Sterling Tracking Point Definition
EDIZ604	EDIX604	Tracking Point System Message Control
EDIZ605	EDIX605	Tracking Point Status Control
EDIZ606	EDIX606	Tracking Point Remote ID Control(+)
EDIZ607	EDIX607	Functional Area Control
EDIZ608	EDIX608	Maintenance/Inquiry Options Directory
EDIZ609	EDIX609	Maintenance/Inquiry Options Definition
EDIZ610	EDIX610	User Tracking Point Directory(*)
EDIZ611	EDIX611	User Tracking Point Definition(*)
EDIZ620	EDIX620	Exception Management Menu
EDIZ621	EDIX621	Exception Profile Directory
EDIZ622	EDIX622	Exception Profile Definition
EDIZ623	EDIX623	Exception Capture Directory
EDIZ624	EDIX624	Exception Capture Definition
EDIZ625	EDIX625	Exception Action Directory
EDIZ626	EDIX626	Exception Action Definition
EDIZ627	EDIX627	User Message Directory
EDIZ628	EDIX628	User Message Definition
EDIZ629	EDIX629	User Procedure Directory
EDIZ630	EDIX630	User Procedure Definition
EDIZ631	EDIX631	Usage Cross Reference

BMS Map	Program ID	Program Names
EDIZ645	EDIX645	Exception Inquiry Menu
EDIZ646	EDIX646	Recipient Directory
EDIZ647	EDIX647	Recipient Detail
EDIZ648	EDIX648	Exception List
EDIZ649	EDIX649	Exception Detail
EDIZ650	EDIX650	Exception Message List
EDIZ651	EDIX651	Exception Data Display
EDIZ652	EDIX652	Exception History
EDIZ653	EDIX653	Exception History – 2
EDIZ654	EDIX654	Exception History Update
EDIZ662	EDIX662	User Message Display
EDIZ663	EDIX663	User Procedure Display
EDIZ685	EDIX685	System Options
EDIZ686	EDIX686	Staging Temporary Storage Queue Directory
EDIZ688	EDIX688	Sterling Gentran:Viewpoint OnLine Log Display
EDIZ950	EDIX950	Prompt Processor
<b>The following Sterling Gentran:Viewpoint BMS Maps are for Tracking Management only:</b>		
EDIZ700	EDIX700	Tracking Management Main Menu
EDIZ701	EDIX701	Query Directory
EDIZ702	EDIX702	Query Request
EDIZ703	EDIX703	Extended Search Condition
EDIZ710	EDIX710	Item Status History
EDIZ711	EDIX711	Item Reference History
EDIZ712	EDIX712	Item Process Detail
EDIZ715	EDIX715	Item Message List
EDIZ716	EDIX716	Item Data Display
EDIZ718	EDIX718	Item Exception Status
<b>The following Sterling Gentran:Viewpoint BMS Map is for Sterling Gentran:Plus only:</b>		

---

BMS Map	Program ID	Program Names
EDIZ402	EDIX402	Interchange Detail
EDIZ403	EDIX403	Interchange Line Detail

(\*) Tracking Management only.

(+) Sterling Gentran:Plus only.



# File Descriptions

This chapter describes data sets, including space calculations and VSAM dataset information. For detailed information on the programs used to initialize and maintain Sterling Gentran:Viewpoint files, see Chapter 1, “Batch Program Descriptions,” in this guide.

**Note:** All Disk Space Requirements in this chapter are expressed in 3390-type Tracks.

<b>Topic</b>	<b>Page</b>
EDIAPPLT – Sterling Gentran:Realtime Tutorial Application Data File .....	3-2
EDIAPPLV – Sterling Gentran:Realtime IVP Application Data File .....	3-3
EDICFC – Sterling Connect Failure Codes File .....	3-4
EDICFG – Configuration File .....	3-5
EDICXRF – Sterling Connect Cross Reference File.....	3-9
EDIDATT – Sterling Gentran:Realtime Tutorial EDI Data File .....	3-10
EDIDATV – Sterling Gentran:Realtime IVP EDI Data File .....	3-11
EDIJCL – JCL File .....	3-12
EDIPRMP – Prompt File .....	3-13
EDIVA – Archive File .....	3-14
EDIVCQ – Communications Queue File .....	3-15
EDIVM – Master Index File.....	3-16
EDIVOURT – Offline Utility Report File .....	3-18
EDIVOUXR – Offline Utility Cross Reference File.....	3-19
EDIVP – Profile File .....	3-20
EDIVPPX – Trace ID Cross Reference File.....	3-23
EDIVR – Repository File .....	3-24
EDIVSFn – Staging Files .....	3-26
EDIVnnnn – Staging Temporary Storage Queues.....	3-28
EDIVT – Trace ID File.....	3-29
EDIVTO – Online Trace ID File .....	3-30

## EDIAPPLT – Sterling Gentran:Realtime Tutorial Application Data File

### Description

This file is used to test the outbound Tutorial process. The data used to initially load the file is provided with the Sterling Gentran:Viewpoint product.

### Activity

Load the file by running the DEFVPRT installation JCL. Once loaded, the only activities done by the CICS test program EDIRSOA are reads. You can optionally reload the file with your own data and test processing of this data.

### Program References

The following program accesses the Tutorial Application Data file:

Program	Purpose
Sample Online Application (EDIRSOA)	Read the data and pass it to the Sterling Gentran:Realtime Outbound translation process with comparable results to the batch translation system.

### Dataset Recovery

Rebuild the Tutorial Application Data file using a backup of the dataset. No data is changed in processing, so a simple backup of the file is needed.

### Disk Space Requirements

This file is very small and requires less than 5 tracks on a 3390 disk drive.

### VSAM Dataset Definition

```
DEFINE CLUSTER (NAME (GENTRAN.V6X6.VPT.VSAM.EDIAPPLT) -  
VOLUME (XXXXXX) -  
TRACKS (2 1) -  
NUMBERED -  
RECORDSIZE (250 250) -  
SHR (2 3) -  
DATA (NAME (GENTRAN.V6X6.VPT.VSAM.EDIAPPLT.DATA) -  
CISZ (1024))
```



## EDIAPPLV – Sterling Gentran:Realtime IVP Application Data File

### Description

This file is used to test the outbound Installation Verification process. The data used to initially load the file is provided with the Sterling Gentran:Viewpoint product.

### Activity

Load the file by running the DEFVPRT installation JCL. Once loaded, the only activities done by the CICS test program EDIRSOA are reads. You can optionally reload the file with your own data and test processing of this data.

### Program References

The following program accesses the IVP Application Data file:

Program	Purpose
Sample Online Application (EDIRSOA)	Read the data and pass it to the Sterling Gentran:Realtime Outbound translation process with comparable results to the batch translation system.

### Dataset Recovery

Rebuild the IVP Application Data file using a backup of the dataset. No data is changed in processing, so a simple backup of the file is needed.

### Disk Space Requirements

This file is very small and requires less than 5 tracks on a 3390 disk drive.

### VSAM Dataset Definition

```
DEFINE CLUSTER (NAME (GENTRAN.V6X6.VPT.VSAM.EDIAPPLV) -
VOLUME (XXXXXX)           -
TRACKS (2 1)              -
NUMBERED                  -
RECORDSIZE (250 250)     -
SHR (2 3)                 -
DATA (NAME (GENTRAN.V6X6.VPT.VSAM.EDIAPPLV.DATA) -
CISZ (1024))
```

## EDICFC – Sterling Connect Failure Codes File

### Description

**This file is only available for Sterling Gentran:Plus users.**

The Sterling Connect Failure Codes file contains the text messages associated to communications failure codes.

### Activity

The Sterling Connect Failure Codes File is a low activity file.

### Program References

The Sterling Connect Failure Codes file is referenced by the following program:

Program	Purpose
CICS Communications Post Processor	Reads the file.

### Dataset Recovery

This file can be recovered from a recent backup.

This file may also be re-created using the Sterling Gentran:Viewpoint initialization job(s).

### Disk Space Requirements

The Sterling Connect Failure Codes file requires 1000 records.

### VSAM Dataset Definition

```

DEFINE CLUSTER (NAME (GENTRAN.V6X6.VPT.VSAM.EDI.EDICFC) -
          VOLUME (XXXXXX) -
          RECORDS (1000 500) -
          FREESPACE (0 0) -
          KEYS (6 0) -
          RECORDSIZE (80 80) -
          SHR (2 3)) -
DATA (NAME (GENTRAN.V6X6.VPT.VSAM.EDI.EDICFC.DATA) -
      CISZ (512)) -
INDEX (NAME (GENTRAN.V6X6.VPT.VSAM.EDI.EDICFC.INDEX))

```

## EDICFG – Configuration File

### Description

The Configuration File contains records to control system level features and options. The Configuration File contains different record types. Each record type is specific to a system feature or option.

The Configuration File Record Type 4 used by the Sterling Gentran:Viewpoint system is described below.

### Activity

The Configuration File is a very low activity file.

### Program References

Nearly all Sterling Gentran:Viewpoint batch and CICS applications read the file. No Sterling Gentran:Viewpoint applications update the file.

### Dataset Recovery

This file can be recovered from a recent backup.

### Record Type 4 – Sterling Gentran:Viewpoint

The Sterling Gentran:Viewpoint system record contains the 1-character value which identifies, to the Sterling Gentran system, whether Sterling Gentran:Viewpoint is installed in your region's load library. This record is used to identify the Sterling Gentran:Viewpoint installation.

Record Position	Length	Format	Field Name
0001-0001	01	N	Record Type
0002-0010	09	AN	Spaces
0011-0011	01	AN	Sterling Gentran:Viewpoint Exception Management Install Indicator
0012-0012	01	AN	Sterling Gentran:Viewpoint Tracking Management Install Indicator
0013-0018	06	N	Find Limit
0019-0024	06	N	Search Limit
0025-0025	01	AN	Exception Management Partner Default
0026-0026	01	AN	Tracking Management Partner Default
0027-0031	05	AN	Exception Management Version Number

Record Position	Length	Format	Field Name
0032-0036	05	AN	Tracking Management Version Number
0037-0083	47	AN	Spaces
0084-0089	06	N	Last Update Date
0090-0095	06	N	Last Update Time
0096-0097	02	AN	Spaces
0098-0100	03	AN	Last Update User Initials

## Field Descriptions

### Sterling Gentran:Viewpoint Exception Management Install Indicator

Indicates whether or not the Sterling Gentran:Viewpoint Exception Management option has been implemented with the Sterling Gentran Base system. Valid values:

<b>Y</b>	Yes. Sterling Gentran:Viewpoint Exception Management is installed.
<b>N</b>	No. Sterling Gentran:Viewpoint Exception Management is not installed.
Default:	<b>Y</b>

### Sterling Gentran:Viewpoint Tracking Management Install Indicator

Indicates whether or not the Sterling Gentran:Viewpoint Tracking Management option has been implemented with the Sterling Gentran Base system. Valid values:

<b>Y</b>	Yes. Sterling Gentran:Viewpoint Tracking Management is installed.
<b>N</b>	No. Sterling Gentran:Viewpoint Tracking Management is not installed.
Default:	<b>Y</b>

### Find Limit

Limits the number of items that satisfy the search criteria to be displayed by the Query Request Search function. This field is only required by the Tracking Management module.

Default: **000100**

### Search Limit

Specifies the maximum number of items the search function will evaluate for items matching the search criteria. This field is only required by the Tracking Management module.

Default:       **010000**

**Exception Management Partner Default**

Indicates the default value of the Exception Management Partner values. This option can be used to control the initial amount of captured information for Exception Management, by partner, without updating the field in the partner profiles. Valid values:

- |          |   |
|----------|---|
| <b>Y</b> | The default Partner values will be <b>Yes</b> . Blank Partner values indicate that Exception Management <b>IS</b> enabled for the partner.    |
| <b>N</b> | The default Partner values will be <b>No</b> . Blank Partner values indicate that Exception Management <b>IS NOT</b> enabled for the partner. |
| Default: | <b>Y</b>  |

**Tracking Management Partner Default**

Indicates the default value of the Tracking Management Partner values. This option can be used to control the initial amount of tracked information for Tracking Management, by partner, without updating the field in the partner profiles. Valid values:

- |          |  |
|----------|--|
| <b>Y</b> | The default Partner values will be <b>Yes</b> . Blank Partner values indicate that Tracking Management <b>IS</b> enabled for the partner.    |
| <b>N</b> | The default Partner values will be <b>No</b> . Blank Partner values indicate that Tracking Management <b>IS NOT</b> enabled for the partner. |
| Default: | <b>Y</b>   |

**Exception Management Version Number**

Indicates the 5-character Exception Management version number in the format **n.nnn**.

Default: 6.6

**Tracking Management Version Number**

Indicates the 5-character Tracking Management version number in the format **n.nnn**.

Default: 6.6

## EDICXRF – Sterling Connect Cross Reference File

### Description

**This file is only available for Sterling Gentran:Plus users.**

The Sterling Connect Cross Reference file contains the record of which communications batch numbers were re-assigned by running the Sterling Connect maintenance utilities.

### Activity

The Sterling Connect Cross Reference File is a low activity file.

### Program References

The Sterling Connect Cross Reference file is referenced by the following programs:

Program	Purpose
CICS Communications Post Processor	Reads the file.
CICS Post Processor	Reads the file.
Sterling Gentran:Viewpoint Communications Re-Org.	Updates the file.

### Dataset Recovery

If required, the file should be recovered from a recent backup.

### Disk Space Requirements

The space requirements will vary according to the number of communications batches currently stored within the Sterling Connect communications system. One Cross Reference record will be written for each communications batch number which has been re-assigned. Therefore the maximum number of records will not exceed the maximum batch number defined in the Sterling Connect communications system.

### VSAM Dataset Definition

```

DEFINE CLUSTER (NAME (GENTRAN.V6X6.VPT.VSAM.EDI.EDICXRF) -
  VOLUME (XXXXXX) -
  RECORDS (2000 2000) -
  FREESPACE (0 0) -
  KEYS (7 0) -
  RECORDSIZE (14 14) -
  SHR (2 3)) -
DATA (NAME (GENTRAN.V6X6.VPT.VSAM.EDI.EDICXRF.DATA) -
  CISZ (512)) -
INDEX (NAME (GENTRAN.V6X6.VPT.VSAM.EDI.EDICXRF.INDEX))

```

## EDIDATT – Sterling Gentran:Realtime Tutorial EDI Data File

### Description

This file is used to test the inbound Tutorial process. The data used to initially load the file is provided with the Sterling Gentran:Viewpoint product.

### Activity

Load the file by running the DEFVPRT installation JCL. Once loaded, the only activities done by the CICS test program EDIRSOA are reads. You can optionally reload the file with your own data and test processing of this data.

### Program References

The following program accesses the Tutorial EDI Inbound file:

Program	Purpose
Sample Online Application (EDIRSOA)	Read the data and pass it to the Sterling Gentran:Realtime Inbound translation process with comparable results to the batch translation system.

### Dataset Recovery

Rebuild the Tutorial EDI Data file using a backup of the dataset. No data is changed in processing, so a simple backup of the file is needed.

### Disk Space Requirements

This file is very small and requires less than 5 tracks on a 3390 disk drive.

### VSAM Dataset Definition

```
DEFINE CLUSTER (NAME (GENTRAN.V6X6.VPT.VSAM.EDIDATT) -
VOLUME (XXXXXX)           -
TRACKS (2 1)              -
NUMBERED                  -
RECORDSIZE (80 80)       -
SHR (2 3)                 -
DATA (NAME (GENTRAN.V6X6.VPT.VSAM.EDIDATT.DATA) --
CISZ (1024))
```



## EDIDATV – Sterling Gentran:Realtime IVP EDI Data File

### Description

This file is used to test the inbound Installation Verification process. The data used to initially load the file is provided with the Sterling Gentran:Viewpoint product.

### Activity

Load the file by running the DEFVPRT installation JCL. Once loaded, the only activities done by the CICS test program EDIRSOA are reads. You can optionally reload the file with your own data and test processing of this data.

### Program References

The following program accesses the IVP EDI Inbound Data file:

Program	Purpose
Sample Online Application (EDIRSOA)	Read the data and pass it to the Sterling Gentran:Realtime Inbound translation process with comparable results to the batch translation system.

### Dataset Recovery

Rebuild the IVP EDI Data file using a backup of the dataset. No data is changed in processing, so a simple backup of the file is needed.

### Disk Space Requirements

This file is very small and requires less than 5 tracks on a 3390 disk drive.

### VSAM Dataset Definition

```
DEFINE CLUSTER (NAME (GENTRAN.V6X6.VPT.VSAM.EDIDATV) -
VOLUME (XXXXXX)           -
TRACKS (2 1)              -
NUMBERED                  -
RECORDSIZE (250 250)     -
SHR (2 3)                 -
DATA (NAME (GENTRAN.V6X6.VPT.VSAM.EDIDATV.DATA) -
CISZ (1024))
```

## EDIJCL – JCL File

### Description

The JCL File contains entries for JCL streams which will be executed through Sterling Gentran Online Functions.

### Activity

This file is relatively stable. Most ongoing accesses are for read only.

Change activity will occur as JCL streams are added or deleted.

### Program References

The JCL File is referenced by the following programs:

Program	Purpose
JCL File Maintenance	Adds, updates, and deletes records.
JCL Submission Processor	Reads the JCL File

### Dataset Recovery

This JCL File can be recreated and reloaded using the JCL File Maintenance Batch Function.

### Disk Space Requirements

To calculate the approximate amount of disk space required, use the following formula:

# of records = (# of JCL statements)

### Example

Two JCL streams are defined: One for TESTONE, and one for TESTTWO. The TESTONE job stream has 20 lines of JCL, and the TESTTWO job stream has 40 lines of JCL.

# of records = (20 + 40)  
= 60 records

### VSAM Dataset Definition

```

DEFINE CLUSTER (NAME (GENTRAN.V6X6.VPT.VSAM.EDI.EDIJCL) -
          VOLUME (XXXXXX) -
          RECORDS (100 100) -
          FREESPACE (10 10) -
          KEYS (21 0) -
          RECORDSIZE (150 150) -
          SHR (2 3)) -
DATA (NAME (GENTRAN.V6X6.VPT.VSAM.EDI.EDIJCL.DATA) -
      CISZ (4096)) -
INDEX (NAME (GENTRAN.V6X6.VPT.VSAM.EDI.EDIJCL.INDEX))

```

## EDIPRMP – Prompt File

### Description

The Sterling Gentran:Viewpoint Prompt File contains system information which is used for online prompt requests.

### Activity

The Prompt file is a low activity file.

### Program References

The Prompt file is referenced by the following programs:

Program	Purpose
Sterling Gentran:Viewpoint CICS programs	Reads the file.

### Dataset Recovery

This file can be recreated by reloading it from the Sterling Gentran:Viewpoint product media.

### Disk Space Requirement

The Prompt file requires 200 records.

### VSAM Dataset Definition

```

DEFINE CLUSTER (NAME (GENTRAN.V6X6.VPT.VSAM.EDI.EDIPRMP) -
          VOLUME (XXXXXX) -
          RECORDS (200 50) -
          FREESPACE (0 0) -
          KEYS (51 0) -
          RECORDSIZE (700 700) -
          SHR (2 3)) -
DATA (NAME (GENTRAN.V6X6.VPT.VSAM.EDI.EDIPRMP.DATA) -
      CISZ (4096)) -
INDEX (NAME (GENTRAN.V6X6.VPT.VSAM.EDI.EDIPRMP.INDEX))

```

---

## EDIVA – Archive File

### Description

The Sterling Gentran:Viewpoint Archive File is a standard sequential file that contains documents removed from Sterling Gentran:Viewpoint using the Sterling Gentran:Viewpoint Maintenance/Inquiry program (EDIN140) with the Archive control option.

The Archive file is a standard sequential file with a record length of 701 (DSORG=PS,LRECL=701,RECFM=FB).

### Activity

The Sterling Gentran:Viewpoint Archive file is a transaction file. Its volume depends on the number of documents being removed from the Sterling Gentran:Viewpoint Profile and Repository files.

### Program References

The Archive file is referenced by the following program:

Program	Purpose
Maintenance/Inquiry	Creates the file (Archive mode). Reads the file (Restore mode).

### Disk Space Requirements

The space requirements for the Sterling Gentran:Viewpoint Archive file depend on the amount of Sterling Gentran:Viewpoint activity.

For Exception Management, there will be one record written to the archive file for each exception and message which is archived.

For Tracking Management, there will be nine records written to the archive file for each tracking item which is archived, and one record written for each tracked message which is archived.

## EDIVCQ – Communications Queue File

### Description

**This file is only available for Sterling Gentran:Plus users.**

The Communications Queue File is used to pass Sterling Connect Communications Log File information to Sterling Gentran:Viewpoint.

### Activity

The Communications Queue File is a medium to high activity file.

### Program References

The Communications Queue File is referenced by the following programs:

Program	Purpose
CICS Communications Post Processor	Reads and updates the file.
CICS Sterling Gentran:Viewpoint Scanner	Reads the file.
Communications Queue File Initialize	Sequentially updates the file.
Mailbox/Supertracs Log Exit	Reads and updates the file.

### Dataset Recovery

No special procedures are required for interrupted runs which access the Sterling Gentran:Viewpoint Communications Queue.

In the case of unrecoverable file problems the Sterling Gentran:Viewpoint Communications Queue should be deleted, re-defined, and re-initialized using the Communications Queue File Initialize program.

### Disk Space Requirements

The space requirements will vary according to the volume of Communication activities. One Communications Queue record will be written each time a Sterling Connect Log File record is written. The space allocation requirement will depend on the communication volume which occurs between the system defined scan interval in Sterling Gentran:Viewpoint.

### VSAM Dataset Definition

```

DEFINE CLUSTER (NAME (GENTRAN.V6X6.VPT.VSAM.EDI.EDIVCQ) -
          VOLUME (XXXXXX) -
          RECORDS (2000) -
          NUMBERED -
          RECORDSIZE (1032 1032) -
          SHR (4 3)) -
DATA (NAME (GENTRAN.V6X6.VPT.VSAM.EDI.EDIVCQ.DATA) -
      CISZ (512))

```

**Note:** A secondary allocation must not be specified.

## EDIVM – Master Index File

### Description

**This file is only available with the Tracking Management module.**

The Master Index file contains a list of all tracking points which processed an item through the Extended EDI system. It stores item identification, Trace ID, and pointers to the Repository file, which contains detailed information about the item.

### Activity

This file has medium to high update activity.

### Program References

The Master Index File is referenced by the following programs:

Program	Purpose
CICS Item Exception Status	Reads and Browses the file.
CICS Item Process Detail	Reads the file
CICS Item Reference History	Reads and Browses the file.
CICS Item Status History	Reads and Browses the file..
CICS Post Processor	Adds records to the file.
CICS Query Request	Reads and Browses the file.
Maintenance/Inquiry	In Inquiry mode, this program reads the file. In maintenance mode, the program adds and deletes records and updates the file. <b>Note:</b> Maintenance modes (Purge, Archive, and Restore) require exclusive control of the file. You must close the Master Index file in CICS when running maintenance.

### Dataset Recovery

If recovery is necessary the Sterling Gentran:Viewpoint Profile, Repository, and Master Index files should be recovered from a recent backup.

### Disk Space Requirements

The space requirements vary according to the number of tracked items by the Sterling Gentran:Viewpoint system. Four records are required for each tracked item.

**VSAM Dataset Definition**

```
DEFINE CLUSTER (NAME (GENTRAN.V6X6.VPT.VSAM.EDI.EDIVM) -  
          VOLUME (XXXXXX) -  
          RECORDS (3500 3500) -  
          FREESPACE (30 30) -  
          KEYS (120 0) -  
          RECORDSIZE (1100 1100) -  
          SHR (2 3) -  
DATA (NAME (GENTRAN.V6X6.VPT.VSAM.EDI.EDIVM.DATA) -  
      CISZ (4096) -  
INDEX (NAME (GENTRAN.V6X6.VPT.VSAM.EDI.EDIVM.INDEX) )
```

---

## EDIVOURT – Offline Utility Report File

### Description

**This file is only available for Sterling Gentran:Plus users.**

The Offline Utility Report File is a standard sequential file with a record length of 133 (DSORG=PS, RECFM=FBA,LRECL=133,BLKSIZE=1330). It contains the REPORTS file generated by the Sterling Connect Offline Utility (STOUTL) program ADD and EXTRACT functions.

For more information about the Offline Utility REPORTS File, refer to the appropriate Sterling Connect manual.

### Activity

The Offline Utility Report file is a report file. Its volume depends on the number of communications batches being processed in the particular run.

### Program References

The Offline Utility Report file is referenced by the following programs:

Program	Purpose
Sterling Connect Offline Utility Add/Extract	Creates the file
Sterling Gentran:Viewpoint STOUTL Report Processor	Reads the file.

### Disk Space Requirements

The space requirements for the Offline Utility Report file depend on the amount of communications activity. There will be one record written to the file for each report line.



---

## EDIVOUXR – Offline Utility Cross Reference File

### Description

**This file is only available for Sterling Gentran:Plus users.**

The Offline Utility Cross Reference File is a standard sequential file with a record length of 133 (DSORG=PS, RECFM=FBA,LRECL=133,BLKSIZE=1330). It contains the SYSPRINT file generated by the Sterling Connect Offline Utility (STOUTL) program ADD function.

For more information about the Offline Utility SYSPRINT File, refer to the appropriate Sterling Connect manual.

### Activity

The Offline Utility Cross Reference file is a report file. Its volume depends on the number of communications batches being added in the particular run.

### Program References

The Offline Utility Cross Reference file is referenced by the following programs:

Program	Purpose
Sterling Connect Offline Utility Add	Creates the file
Sterling Gentran:Viewpoint STOUTL Report Processor	Reads the file.

### Disk Space Requirements

The space requirements for the Offline Utility Report file depend on the amount of communications activity. In addition to report heading and parameter report line, there will be one record written to the file for each communications batch processed.

## EDIVP – Profile File

### Description

The Sterling Gentran:Viewpoint Profile file is used to store all definitions and queries for Tracking Management and Exception Management processing. It is used by the Post Processor to perform the filtering and reorganization functions.

### Activity

This file has little update activity, with medium browse activity.

### Program References

The Profile File is referenced by the following programs:

Program	Purpose
CICS Communications Post Processor	Adds records and reads the file.
CICS Exception Action Directory	Reads, browses, and updates the file.
CICS Exception Action Definition	Adds records, reads, browses, and updates the file.
CICS Exception Capture Directory	Reads, browses, and updates the file.
CICS Exception Capture Definition	Adds records, reads, browses, and updates the file.
CICS Exception Data Display	Reads the file.
CICS Exception History	Reads the file.
CICS Exception History Update	Reads the file.
CICS Exception Message List	Reads the file.
CICS Exception Profile Directory	Reads, browses, and updates the file.
CICS Exception Profile Definition	Adds records, reads browses, and updates the file.
CICS Functional Area Control	Reads and updates the file.
CICS Maintenance/Inquiry Options Definition	Adds records, reads, browses, and updates the file.
CICS Maintenance/Inquiry Options Directory	Reads, browses, and updates the file.
CICS Online Gateway	Adds records, reads, and updates the file.
CICS Post Processor	Deletes records, reads, browses, and updates the file.
CICS Staging Temporary Storage Queue Directory	Deletes records, reads, browses, and updates the file.
CICS Sterling Tracking Point Definition	Adds records, reads, browses, and updates the file.
CICS Sterling Tracking Point Directory	Reads, browses, and updates the file.

Program	Purpose
CICS System Options	Reads and updates the file.
CICS Tracking Point System Message Control	Reads and updates the file.
CICS Tracking Point Status Control	Reads and updates the file.
CICS Tracking Point Remote ID Control	Reads and updates the file.
CICS Usage Cross Reference	Reads and browses the file.
CICS User Action Definition	Adds records, reads, browses, and updates the file.
CICS User Action Directory	Reads, browses, and updates the file.
CICS User Message Definition	Adds records, reads, browses, and updates the file.
CICS User Message Directory	Reads, browses, and updates the file.
CICS User Message Display	Reads and browses the file.
CICS Sterling Gentran:Viewpoint Main Menu	Reads the file.
CICS Sterling Gentran:Viewpoint Scanner	Reads, browses, and updates the file.
Batch Gateway	Reads the file.
Batch Wait Utility	Reads the file.
Communications Queue File Initialize	Adds records, reads, and updates the file.
Maintenance/Inquiry	In Inquiry mode, this program reads the file. In Maintenance mode, the program adds and deletes records and updates the file. <b>Note:</b> Maintenance modes (Purge, Archive, and Restore) require exclusive control of the file. You must close the Profile file in CICS when running maintenance.
Staging File Initialize	Reads and updates the file.
STOUTL Report Processor	Reads the file.
System Status Toggle Program	Reads and updates the file.
<b>Tracking Management only:</b>	
CICS Query Directory	Reads, browses, and updates the file.
CICS Query Request	Adds records, reads, browses, and updates the file.
CICS Extended Search Condition	Reads, browses, and updates the file.
CICS Item Status History	Reads the file.
CICS Item Reference History	Reads the file.
CICS Item Process Detail	Reads the file.

Program	Purpose
CICS Item Message List	Reads the file.
CICS Item Data Display	Reads the file.
CICS Item Exception Status	Reads the file.
CICS User Online Gateway	Adds records, reads, browses, and updates the file.
User Batch Gateway	Reads the file.

### Dataset Recovery

If recovery is necessary, the Sterling Gentran:Viewpoint Profile, Repository, and Master Index (if applicable) files should be recovered from a recent backup.

All Sterling Gentran:Viewpoint Staging Files must also be redefined and re initialized at this time.

### Disk Space Requirements

The space requirements depend on the number of Sterling Gentran:Viewpoint profiles which are defined. One to two records are required for each definition within the Extended System Management, and Exception Management functional areas. A primary allocation of 500 records, and secondary allocation of 250 records, will meet most needs.

### VSAM Dataset Definition

```

DEFINE CLUSTER (NAME (GENTRAN.V6X6.VPT.VSAM.EDI.EDIVP)      -
          VOLUME (XXXXXX)                                   -
          RECORDS (500 250)                                 -
          FREESPACE (30 30)                                 -
          KEYS (50 0)                                       -
          RECORDSIZE (650 650)                              -
          SHR (2 3) )                                        -
DATA (NAME (GENTRAN.V6X6.VPT.VSAM.EDI.EDIVP.DATA)         -
      CISZ (4096) )                                         -
INDEX (NAME (GENTRAN.V6X6.VPT.VSAM.EDI.EDIVP.INDEX) )

```

## EDIVPPX – Trace ID Cross Reference File

### Description

**This file is only available for Sterling Gentran:Plus users.**

The Trace ID Cross Reference File is used to store Sterling Gentran:Viewpoint trace IDs assigned to communications batch numbers.

### Activity

The Trace ID Cross Reference File is a medium activity file.

### Program References

The Trace ID Cross Reference File is referenced by the following programs:

Program	Purpose
CICS Communications Post Processor	Reads and writes the file
Batch Gateway	Reads and writes the file.
STOUTL Report Processor	Reads and writes the file.
Sterling Gentran:Viewpoint Communications Re-Org	Reads and deletes the file.

### Dataset Recovery

No special recovery procedures are required for interrupted runs which access the Trace ID Cross Reference file.

### Disk Space Requirements

The space requirements will vary according to the number of communication batches currently monitored by Sterling Gentran:Viewpoint. One Trace ID Cross Reference record will be written for each communications batch. Therefore, the maximum number of records will not exceed the maximum batch number defined in the Sterling Connect communications system.

### VSAM Dataset Definition

```

DEFINE CLUSTER (NAME (GENTRAN.V6X6.VPT.VSAM.EDI.EDIVPPX)          -
              VOLUME (XXXXXX)                                     -
              RECORDS (1000 500)                                 -
              FREESPACE (0 0)                                    -
              KEYS (11 0)                                        -
              RECORDSIZE (80 80)                                 -
              SHR (4 3))                                         -
DATA (NAME (GENTRAN.V6X6.VPT.VSAM.EDI.EDIVPPX.DATA)           -
      CISZ (512))                                               -
INDEX (NAME (GENTRAN.V6X6.VPT.VSAM.EDI.EDIVPPX.INDEX))

```

## EDIVR – Repository File

### Description

The Sterling Gentran:Viewpoint Repository stores all items processed by Tracking Management, and all exceptions that have been captured by Exception Management.

### Activity

This file has medium-high update activity.

### Program References

The Repository File is referenced by the following programs:

Program	Purpose
CICS Exception Data Display	Reads and browses the file.
CICS Exception Detail	Reads and updates the file.
CICS Exception History	Reads and browses the file.
CICS Exception History Update	Adds and deletes records, reads and updates the file.
CICS Exception List	Reads, browses, and updates the file.
CICS Exception Message List	Reads and browses the file.
CICS Exception Profile Definition	Adds records and reads the file.
CICS Post Processor	Adds records, browses, and updates the file.
CICS Recipient Detail	Reads the file.
CICS Recipient Directory	Reads and browses the file.
CICS User Message Display	Reads the file.
CICS User Procedure Display	Reads the file.
Maintenance/Inquiry	In Inquiry mode, this program reads the file. In Maintenance mode, the program adds and deletes records and updates the file. <b>Note:</b> Maintenance modes (Purge, Archive, and Restore) require exclusive control of the file. You must close the Repository file in CICS when running maintenance.
Sterling Gentran:Viewpoint Communications Re-Org	Reads, browses, and updates the file.
<b>Tracking Management only:</b>	
CICS Item Data Display	Reads and browses the file.

Program	Purpose
CICS Item Exception Status	Reads and browses the file.
CICS Item Message List	Reads and browses the file.
CICS Item Process Detail	Reads and browses the file.
CICS Item Reference History	Reads the file.
CICS Item Status History	Reads the file.
CICS Query Request	Reads the file.

### Dataset Recovery

If recovery is necessary, the Sterling Gentran:Viewpoint Profile and Repository files should be recovered from a recent backup.

### Disk Space Requirements

The space requirements vary according to the number of captured exceptions and tracked items by the Sterling Gentran:Viewpoint system. One record is required for each exception/item and message.

### VSAM Dataset Definition

```

DEFINE CLUSTER (NAME (GENTRAN.V6X6.VPT.VSAM.EDI.EDIVR) -
          VOLUME (XXXXXX) -
          RECORDS (1500 500) -
          FREESPACE (30 30) -
          KEYS (200 0) -
          RECORDSIZE (700 700) -
          SHR (2 3)) -
DATA (NAME (GENTRAN.V6X6.VPT.VSAM.EDI.EDIVR.DATA) -
      CISZ (4096)) -
INDEX (NAME (GENTRAN.V6X6.VPT.VSAM.EDI.EDIVR.INDEX))

```

## EDIVSFn – Staging Files

### Description

The Sterling Gentran:Viewpoint Staging files are used to pass data from a Sterling Gentran:Viewpoint enabled batch system to Sterling Gentran:Viewpoint. Staging files are “wrap-around” files. Once initialized, data written to the Staging files overlays data which has been processed by the Sterling Gentran:Viewpoint Post Processor.

Sterling Gentran:Viewpoint allows you to define up to 20 Staging Files. They will be suffixed with a numeric value from 1 to 20. As an example, the twentieth Staging File would be EDIVSF20.

### Activity

This is a medium activity file. There are no ongoing maintenance requirements for this file.

### Program References

The Staging Files are referenced by the following programs:

Program	Purpose
CICS Post Processor	Reads the file
CICS Sterling Gentran:Viewpoint Scanner	Closes, opens, and reads the files.
Batch Gateway	Sequentially updates the files.
Staging File Initialize	Initializes and updates the files.
<b>Tracking Management Only</b>	
User Batch Gateway	Sequentially updates the file.

### Dataset Recovery

No special recovery procedures are required for interrupted runs which access the Staging files.

### Disk Space Requirements

The space requirements vary according to the volume of activity, which is being captured on the staging file, and the frequency (scan interval) of the Online Sterling Gentran:Viewpoint Scanner program. One staging file record is required for each document, transaction, group, interchange communications batch, and message which is being tracked by Sterling Gentran:Viewpoint.

At the end of each job, all active Sterling Gentran:Viewpoint Tracking Points will issue a message indicating the percentage of the staging file that is used.



**VSAM Dataset Definition**

```
DEFINE CLUSTER (NAME (GENTRAN.V6X6.VPT.VSAM.EDI.EDIVSFn) -  
          VOLUME (XXXXXX) -  
          RECORDS (2000) -  
          NUMBERED -  
          RECORDSIZE (550 550) -  
          SHR (2 3) -  
DATA (NAME (GENTRAN.V6X6.VPT.VSAM.EDI.EDIVSFn.DATA) -  
      CISZ (4096) ) -
```

**Note:** A secondary allocation must not be specified.

**Note:** N is the staging file number from 1 to 20.

## EDIVnnnn – Staging Temporary Storage Queues

### Description

The Sterling Gentran:Viewpoint Staging Temporary Storage Queues are used to pass data from Sterling Gentran:Viewpoint enabled online systems to Sterling Gentran:Viewpoint. Staging Temporary Storage Queues are standard CICS Temporary Storage Queues.

Sterling Gentran:Viewpoint allows as many Staging Temporary Storage Queues as can be supported by the CICS region. Sterling Gentran:Viewpoint Staging TSQ's are written to auxiliary storage. The Staging TSQ names will be suffixed with a four-digit numeric number (for example, EDIV0001).

### Activity

These are medium activity files. There are no ongoing maintenance requirements for these files.

### Program References

The Staging Temporary Storage Queues are referenced by the following programs:

Program	Purpose
CICS Communications Post Processor	Creates and writes the files.
CICS Online Gateway	Creates and writes the files.
CICS Post Processor	Reads and deletes the files.
CICS Staging Temporary Storage Queue Directory	Reads and deletes the files.
CICS Sterling Gentran:Viewpoint Scanner	Reads the files.
<b>Tracking Management Only</b>	
User Online Gateway	Creates and writes the files.

### Dataset Recovery

No user intervention is required for interrupted tasks which create the Staging Temporary Storage Queues.

### Disk Space Requirements

The space requirements vary according to the volume of activity, which is being captured on the staging temporary storage queue, and the frequency (scan interval) of the Online Sterling Gentran:Viewpoint Scanner program. One Staging Temporary Storage Queue record is required for each item which is being tracked by Sterling Gentran:Viewpoint.

### CICS Temporary Storage Queue Description

RECORD LENGTH:550

STORAGE:Auxiliary

## EDIVT – Trace ID File

### Description

**This file is only available with the Tracking Management module.**

The Trace ID File contains a set of unique Trace IDs for each Staging file. The first batch tracking point to process an item will retrieve a unique Trace ID for the item. This trace ID will be passed along with the item, travelling through the Extended EDI system.

### Activity

The Trace ID file is a low activity file.

### Program References

The Trace ID file is referenced by the following programs:

Program	Purpose
Batch Gateway	Reads and updates the file.
User Batch Gateway	Reads and updates the file.
STOCTL Report Processor	Reads and updates the file.

### Dataset Recovery

This file can be recovered from a recent backup.

### Disk Space Requirements

The Trace ID file contains twenty records, one for each Staging file.

### VSAM Dataset Definition

```

DEFINE CLUSTER (NAME (GENTRAN.V6X6.VPT.VSAM.EDI.EDIVT) -
          VOLUME (XXXXXX) -
          RECORDS (20 10) -
          FREESPACE (0 0) -
          KEYS (20 0) -
          RECORDSIZE (500 500) -
          SHR (2 3) -
DATA (NAME (GENTRAN.V6X6.VPT.VSAM.EDI.EDIVT.DATA) -
          CISZ (512) ) -
INDEX (NAME (GENTRAN.V6X6.VPT.VSAM.EDI.EDIVT.INDEX) )

```

## EDIVTO – Online Trace ID File

### Description

**This file is only available with the Tracking Management module.**

The Online Trace ID File contains a set of unique Trace IDs. The first online tracking point to process an item will retrieve a unique Trace ID for the item. The trace ID will be passed along with the item, travelling through the Extended EDI system.

### Activity

The Online Trace ID file is a low activity file.

### Program References

The Online Trace ID file is referenced by the following programs:

Program	Purpose
CICS Communications Post Processor	Reads and updates the file.
CICS Online Gateway	Reads and updates the file.
CICS User Online Gateway	Reads and updates the file.

### Dataset Recovery

This file can be recovered from a recent backup.

### Disk Space Requirements

The Online Trace ID File contains one record.

### VSAM Dataset Definition

```

DEFINE CLUSTER (NAME (GENTRAN.V6X6.VPT.VSAM.EDI.EDIVTO) -
          VOLUME (XXXXXX) -
          RECORDS (10 5) -
          FREESPACE (0 0) -
          KEYS (20 0) -
          RECORDSIZE (500 500) -
          SHR (2 3) -
DATA (NAME (GENTRAN.V6X6.VPT.VSAM.EDI.EDIVTO.DATA) -
      CISZ (512) ) -
INDEX (NAME (GENTRAN.V6X6.VPT.VSAM.EDI.EDIVTO.INDEX) )

```

# User Exits and APIs

User Exits and APIs describes how to use the various Sterling Gentran:Viewpoint User Exits.

Chapter Four describes the following User Exits/APIs:

<b>Topic</b>	<b>Page</b>
Exception Action User Exit.....	4-2
System Options – Error User Exit.....	4-16
Sterling Gentran:Viewpoint User Gateways.....	4-17
User Batch Gateway – EDIN300.....	4-36
User Online Gateway – EDIX970.....	4-38
Tracking User Exit.....	4-40

## Exception Action User Exit

### Overview

The Exception Action User Exit supports interfaces to either an online user exit transaction or a batch user exit program. Data is passed to either exit type in a common format which is described under “Parameters”. Refer to the *IBM® Sterling Gentran:Viewpoint® for z/OS® Release 6.6 User Guide*, the “Optional Features” section in the “Implementation Process” chapter in this guide for procedures to initiate **Exception Actions**.

### User Exit Processing Logic

#### Online Exit

The online user exit is initiated via a CICS START command with a FROM parameter containing the Sterling Gentran:Viewpoint data. The online exit should access this data using the CICS RETRIEVE command. Once started, the online exit runs independently from Sterling Gentran:Viewpoint, and does not return any status information. A sample online exit transaction is provided in UTILITY.SOURCE (member name: EDIVOACT).

#### Batch Exit

The batch user exit runs as a called subroutine of the Sterling Gentran:Viewpoint Batch Action program, using the program name specified in the Sterling Gentran:Viewpoint Action Definition. It is initiated via a COBOL call. Sterling Gentran:Viewpoint data is passed to the batch exit in a Linkage Section. The batch exit runs independently from the calling Sterling Gentran:Viewpoint Batch Action program, and does not return any status information. A sample batch exit program is provided in UTILITY.SOURCE (member name: EDIVBACT).

### Parameters

The parameters passed to the Exception Action User Exit are described below. A sample copybook is provided in UTILITY.SOURCE (member name: EDIVACT):

### Sterling Gentran:Viewpoint-Action-Linkage

#### Item Identification

Record Position	Length	Format	Field Name
0001-0001	01	AN	Exit Version
0002-0011	10	AN	Application Data ID
0012-0012	01	AN	Direction
0013-0026	14	AN	Envelope Reference ID – Interchange
0027-0040	14	AN	Envelope Reference ID – Group
0041-0054	14	AN	Envelope Reference ID – Transaction
0055-0057	03	AN	Unused
0058-0063	06	AN	Functional Group ID

Record Position	Length	Format	Field Name
0064-0078	15	AN	Network ID
0079-0113	35	AN	Partner
0114-0117	04	AN	Partner Qualifier
0118-0125	08	AN	Process
0126-0141	16	AN	Process Date/Time
0142-0151	10	AN	System
0152-0157	06	AN	System Message ID
0158-0289	132	AN	System Message Text
0290-0290	01	AN	Test/Production Indicator
0291-0296	06	AN	Transaction Set
0297-0311	15	AN	User
0312-0356	45	AN	User Reference

### Status Information

Record Position	Length	Format	Field Name
0357-0358	02	AN	Acknowledgement Status
0359-0374	16	AN	Acknowledgement Date/Time
0375-0376	02	AN	Compliance Status
0377-0392	16	AN	Compliance Date/Time
0393-0393	01	AN	Duplicate Indicator
0394-0395	02	AN	Envelope Validation Status
0396-0411	16	AN	Envelope Validation Date/Time
0412-0413	02	AN	Mapping Validation Status
0414-0429	16	AN	Mapping Validation Date/Time
0430-0436	07	AN	Network Reconciliation Status
0437-0452	16	AN	Network Reconciliation Date/Time
0453-0454	02	AN	Return Code
0455-0456	02	AN	Sequence Checking Status
0457-0472	16	AN	Sequence Checking Date/Time

*Exception Management Information*

Record Position	Length	Format	Field Name
0473-0482	10	AN	Action Name
0483-0492	10	AN	Capture Definition Name
0493-0502	10	AN	Exception Profile Name
0503-0503	01	AN	Item Type
0504-0513	10	AN	Recipient
0514-0520	07	AN	User Message ID
0521-0672	152	AN	User Message Text
0673-0682	10	AN	User Procedure Name

*User Data*

Record Position	Length	Format	Field Name
0683-0752	70	AN	User Data (record-1)
0753-0822	70	AN	User Data (record-2)
0823-0892	70	AN	User Data (record-3)
0893-0962	70	AN	User Data (record-4)

*Tracking Management Information*

Record Position	Length	Format	Field Name
0963-0978	16	AN	User Item Type
0979-0988	10	AN	Process Status Field 1
0989-0998	10	AN	Process Status Field 2
0999-1008	10	AN	Process Status Field 3
1009-1018	10	AN	Trace ID
1019-1033	15	AN	User Field 1
1034-1048	15	AN	User Field 2
1049-1063	15	AN	User Field 3

*Communications Information*

Record Position	Length	Format	Field Name
1064-1064	01	AN	Added Flag
1065-1088	24	AN	Batch ID
1089-1095	07	AN	Batch Number



Record Position	Length	Format	Field Name
1096-1096	01	AN	Collected Flag
1097-1097	01	AN	Communications Protocol
1098-1098	01	AN	Extracted Flag
1099-1101	03	AN	Failure Code
1102-1102	01	AN	Incomplete Flag
1103-1111	09	AN	Record Count
1112-1119	08	AN	Remote ID
1120-1120	01	AN	Requestable Flag
1121-1121	01	AN	Transmitted Flag

### *Sterling Gentran:Realtime Information*

Record Position	Length	Format	Field Name
1122-1122	01	AN	Databank System Indicator
1123-1125	03	AN	Option
1126-1128	03	AN	Path ID
1129-1131	03	AN	Queue File Number
1132-1138	07	AN	CICS Task Number
1139-1142	04	AN	CICS Transaction ID
1143-1500	358	AN	Unused

### *Field Descriptions*

Field Name	Description
Acknowledgement Date/Time	A 16-character alphanumeric field containing the approximate date and time when transactions were acknowledged.
Acknowledgement Status	A 2-character alphanumeric field containing the current acknowledgment status for the transaction. <ul style="list-style-type: none"> <li>• <b>A</b> – Accepted</li> <li>• <b>I</b> – Indeterminate</li> <li>• <b>N</b> – Not Required</li> <li>• <b>R</b> – Rejected</li> </ul>
Action Name	A 10-character alphanumeric field containing the name of the action being performed.
Added Flag	A 1-character alphanumeric field indicating whether the batch has been added off-line. <ul style="list-style-type: none"> <li>• <b>Y</b> – Yes. The batch has been added.</li> </ul>
Application Data ID	A 10-character alphanumeric field containing the Application Data ID.

Field Name	Description
Batch ID	A 24-character alphanumeric field containing the user assigned ID for the batch.
Batch Number	A 7-character numeric field containing the current batch number assigned by Sterling Connect.
Capture Definition Name	A 10-character alphanumeric field containing the name of the Capture Definition.
CICS Task Number	A 7-character alphanumeric field containing the CICS Task Number.
CICS Transaction ID	A 4-character alphanumeric field containing the CICS Transaction ID.
Collected Flag	A 1-character alphanumeric field indicating whether the batch has been collected online. <ul style="list-style-type: none"> <li>• <b>Y</b> – Yes. The batch has been collected.</li> </ul>
Communications Protocol	A 1-character alphanumeric field indicating whether the batch originated from BSC, SNA, or Host. <ul style="list-style-type: none"> <li>• <b>B</b> – BSC</li> <li>• <b>S</b> – SNA</li> <li>• <b>H</b> – Host</li> </ul>
Compliance Date/Time	A 16-character alphanumeric field containing the approximate date and time when transactions were compliance processed.
Compliance Status	A 2-character alphanumeric field containing the highest validation error the program encountered while processing the documents. <ul style="list-style-type: none"> <li>• <b>00</b> – No errors were encountered in the document.</li> <li>• <b>04</b> – One or more element errors were detected.</li> <li>• <b>08</b> – One or more missing or misplaced segments were encountered.</li> <li>• <b>12</b> – The transaction set is incomplete.</li> </ul>
Databank System Indicator	A 1-character alphanumeric field indicating the Databank System: <ul style="list-style-type: none"> <li>• <b>Space</b> or <b>G</b> – Sterling Gentran Databank</li> <li>• <b>R</b> – Sterling Gentran:Realtime Databank</li> </ul>
Direction	A 1-character alphabetic code used to identify the direction of the transaction: <ul style="list-style-type: none"> <li>• <b>I</b> – Inbound</li> <li>• <b>O</b> – Outbound</li> </ul>
Duplicate Indicator	A 1-character alphabetic code used to identify whether the item is a duplicate of another item on the Databank” <ul style="list-style-type: none"> <li>• <b>Y</b> – Yes. This is a duplicate.</li> <li>• <b>N</b> – No. This is not a duplicate.</li> </ul>
Envelope Reference ID – Interchange	A 14-character alphanumeric field containing the Envelope Reference ID.
Envelope Reference ID – Group	A 14-character alphanumeric field containing the Group Envelope Reference ID.

Field Name	Description
Envelope Reference ID – Transaction	A 14-character alphanumeric field containing the Transaction Envelope Reference ID.
Envelope Validate Date/Time	A 16-character alphanumeric field containing the date and time the envelope validation was performed.
Envelope Validation Status	<p>A 2-character alphanumeric field displaying the highest validation error the Inbound Editor encountered while processing the envelopes:</p> <ul style="list-style-type: none"> <li>• <b>00</b> – No errors were encountered in the document.</li> <li>• <b>04</b> – One or more errors, other than authorization and sequence errors, were encountered in processing the Transmission Envelope, or One or more errors, other than unknown user or unknown partner, were encountered in processing the Functional Group Envelope.</li> <li>• <b>08</b> – Either no Partner ID/Qualifier or User/Partner was found corresponding to the sender/receiver codes contained in the Functional Group, or the segment count contained in the Transaction Set Trailer was found to be in error.</li> </ul>
Exception Profile Name	A 10-character alphanumeric field containing the Exception Profile Definition name.
Exit Version	A 1-character exit version identifier. Currently set to A.
Extracted Flag	<p>A 1-character alphanumeric field indicating whether the batch has been extracted.</p> <ul style="list-style-type: none"> <li>• <b>Y</b> – Yes. The batch has been extracted.</li> </ul>
Failure Code	A 3-character numeric field containing the failure code associated with the batch.
Functional Group ID	A 6-character alphanumeric field containing the functional group ID from the EDI data.
Incomplete Flag	<p>A 1-character alphanumeric field indicating whether the batch is incomplete.</p> <ul style="list-style-type: none"> <li>• <b>Y</b> – Yes. The batch is incomplete.</li> <li>• <b>N</b> – No. The batch is complete.</li> </ul>
Item Type	<p>A 1-character alphanumeric field containing the item type.</p> <ul style="list-style-type: none"> <li>• <b>B</b> – Batch</li> <li>• <b>D</b> – Document</li> <li>• <b>F</b> – Functional Group</li> <li>• <b>I</b> – Interchange</li> <li>• <b>R</b> – Run</li> <li>• <b>T</b> – Transaction</li> </ul>
Mapping Validation Date/Time	A 16-character alphanumeric field containing the date and time the document was last mapped.

Field Name	Description
Mapping Validation Status	<p>A 2-character alphanumeric field displaying the current Mapping Status for the document.</p> <ul style="list-style-type: none"> <li>• <b>00</b> – No errors were encountered during the mapping process for the document.</li> <li>• <b>04</b> – One or more, requirement or relational, condition errors were detected.</li> <li>• <b>08</b> – One or more, unknown or unexpected, segment errors were detected.</li> <li>• <b>12</b> – An inbound document could not be translated.</li> </ul>
Network ID	<p>A 15-character alphanumeric field containing the network identifier, as defined on the Partner ID that was used to process this document.</p>
Network Reconciliation Date/Time	<p>A 16-character alphanumeric field containing the date and time that network reconciliation was performed for this document.</p>
Network Reconciliation Status	<p>A 7-character alphanumeric field containing the network status for the transaction.</p> <ul style="list-style-type: none"> <li>• <b>E</b> – Errors were encountered during network processing.</li> <li>• <b>N</b> – As defined by the Partner profiles that was used to process this transaction.</li> <li>• <b>P</b> – Partner has picked up the transaction.</li> <li>• <b>R</b> – Network has received the transaction.</li> <li>• <b>S</b> – Network has sorted (processed) the transaction.</li> <li>• <b>U</b> – User has manually set to a network completed status.</li> <li>• <b>W</b> – Transaction is waiting for a response from the network.</li> </ul>
Option	<p>A 3-character alphanumeric field containing the option number.</p>
Partner	<p>A 35-character alphanumeric field containing the Partner ID.</p>
Partner Qualifier	<p>A 4-character alphanumeric field containing the Trading Partner qualifier.</p>
Path ID	<p>A 3-character alphanumeric field containing the path ID.</p>
Process	<p>An 8-character alphanumeric field which indicates the process of the tracking point.</p>
Process Date and Time	<p>A 16-character alphanumeric field containing the date and time the exception was last processed by a tracking point.</p>
Process Status Field 1	<p>A 1- to 10-character alphanumeric field which is the process status passed from the user application, to Sterling Gentran:Viewpoint, for this item. The user application may set up to three Process Statuses for each item. These status fields correspond with the status fields on the User Tracking Point Definition panel.</p>
Process Status Field 2	<p>A 1- to 10-character alphanumeric field which is the process status passed from the user application to Sterling Gentran:Viewpoint for this item. The user application may set up to three Process Statuses for each item. These status fields correspond with the status fields on the User Tracking Point Definition panel.</p>

Field Name	Description
Process Status Field 3	A 1- to 10-character alphanumeric field which is the process status passed from the user application to Sterling Gentran:Viewpoint for this item. The user application may set up to three Process Statuses for each item. These status fields correspond with the status fields on the User Tracking Point Definition panel.
Queue File Number	A 3-character alphanumeric field containing the queue file number.
Recipient Name	A 10-character alphanumeric field containing the name of the recipient.
Record Count	A 9-character numeric field containing the number of records for the batch.
Remote ID	A 8-character alphanumeric field containing the remote ID associated to the batch.
Return Code	A 2-character alphanumeric field containing the last return code.
Requestable Flag	A 1-character alphanumeric field indicating whether the batch is available for requests. <ul style="list-style-type: none"> <li>• <b>Y</b> – Yes. The batch is available for requests.</li> <li>• <b>N</b> – No. The batch is not available for requests.</li> </ul>
Sequence Checking Date/Time	A 16-character alphanumeric field containing the date and time that sequence checking was performed for this document.
Sequence Checking Status	A 2-character alphanumeric field containing the Envelope Reference ID checking error indicator. <ul style="list-style-type: none"> <li>• <b>00</b> – No errors.</li> <li>• <b>04</b> – Sequence errors detected.</li> </ul>
System	A 10-character alphanumeric field containing the tracking point system name that processed the exception.
System Message ID	A 6-character numeric field containing the System Message ID generated for the exception by the tracking point.
System Message Text	A 132-character alphanumeric field containing a description of the generated System Message.
Test/Production Indicator	A 1-character alphanumeric field containing the test/production status of the transaction. This value is defined in the partner profile that was used to process the transaction.
Trace ID	A 10-character alphanumeric field containing the Sterling Gentran:Viewpoint assigned unique Trace for the item.
Transaction Set	A 6-character alphanumeric field containing the EDI set ID for the transaction.
Transmitted Flag	A 1-character alphanumeric field indicating whether the batch has been transmitted. <ul style="list-style-type: none"> <li>• <b>Y</b> – Yes. The batch has been transmitted.</li> <li>• <b>N</b> – No. The batch has not been transmitted.</li> </ul>

Field Name	Description
User	A 15-character alphanumeric field containing the User ID.
User Data Records	Four 70-byte records which contain the 4 lines of User Data specified in the User Data Area of the Exception Action Definition.
User Field 1	A 1- to 15-character alphanumeric field containing any user information about the item. The user application can pass up to 3 User Fields to Sterling Gentran:Viewpoint, which correspond with the user fields on the User Tracking Point Definition panel.
User Field 2	A 1- to 15-character alphanumeric field containing any user information about the item. The user application can pass up to 3 User Fields to Sterling Gentran:Viewpoint, which correspond with the user fields on the User Tracking Point Definition panel.
User Field 3	A 1- to 15-character alphanumeric field containing any user information about the item. The user application can pass up to 3 User Fields to Sterling Gentran:Viewpoint, which correspond with the user fields on the User Tracking Point Definition panel.
User Item Type	A 16-character alphanumeric field containing the user item type. <ul style="list-style-type: none"> <li>U:[type]</li> </ul>
User Message ID	A 7-character alphanumeric field containing the User Message.
User Message Text	A 152-character alphanumeric field containing a description of the User Message.
User Procedure Name	A 10-character alphanumeric field containing the User Procedure Name.
User Reference	A 45-character alphanumeric field containing the User Reference for the transaction.

### User Exit Parameters Chart

The parameters passed to the Exception Action User Exit are illustrated in the User Exit Parameters Chart. The chart indicates which parameters are available for each system, process, and item.

### Structure

User Exit Fields      This column specifies the parameters passed to the Exception Action User Exit. Parameters specific to Exception Management and Tracking Management are listed at the end of the chart.

Processes              Processes identify the tracking point for which the user exit field is available.

### Legend

The following is the legend for the User Exit Parameter Chart.

<b>Sterling Gentran Processes</b>		
ANYG	Any Sterling Gentran:Viewpoint Enabled Sterling Gentran Process	
OM	EBDI042/EDIR042	Outbound Mapper
OE	EBDI002/EDIR002	Outbound Editor
OEX	EDID205/EDID255	Outbound EDI Extract
AR	EDID510/EDID515	Acknowledgement Reconciliation/Monitor
NR	EDID850	Network Reconciliation
IE	EBDI001/EDIR001	Inbound Editor
IM	EBDI041/EDIR041	Inbound Mapper
IAX	EDID405/EDID455	Inbound Application Extract
<b>User Application Process</b>		
ANYU	Any Sterling Gentran:Viewpoint Enabled User Application Process	
<b>Sterling Connect Processes</b>		
OU	Sterling Connect Offline Utilities (for Sterling Gentran:Plus only)	
CM	Sterling Connect (for Sterling Gentran:Plus only)	
CMOI	Sterling Connect Outbound Interface (for Sterling Gentran:Realtime only)	
CMII	Sterling Connect Inbound Interface (for Sterling Gentran:Realtime only)	

Each column indicates the user exit parameters available for the corresponding item type(s) for each process. The parameter values will be passed to the User Exit by the process.

<b>Item Type</b>	
R	Run
B	Batch
D	Document
I	Interchange
F	Functional Group
T	Transaction Set
U	User Defined Item

User Exit Parameters Chart

USER EXIT FIELDS	Sterling Gentran, USER APPLICATION, AND Sterling Connect SYSTEM PROCESSES													
	A N Y G	O M	O E	O E X	N R	A R	I E	I M	I A X	A N Y U	O U	C M	C M O I	C M I I
	Note: * - The parameter value is passed to the User Exit, if supplied by the process. Note: ** - The parameter value is passed to the User Exit by Sterling Gentran:Realtime processes.													
ITEM IDENTIFICATION FIELDS														
Exit Version	R	D	I,F,T	I,F,T	I	I,F,T	I,F,T	D	D	U	B	B	B	B
Application Data ID		D	T	T		T		D	D	U*				
Direction	R	D	I,F,T	I,F,T	I	I,F,T	I,F,T	D	D	U*	B	B	B	B
Envelope Reference ID - Interchange			I,F,T	I,F,T	I	I,F,T	I,F,T	D	D					
Envelope Reference ID -Group			F, T	F, T		F, T	F, T	D	D					
Envelope Reference ID - Transaction			T	T		T	T	D	D					
Functional Group ID			F, T	F, T		F, T	F, T							
Network ID			I,F,T	I,F,T	I	I,F,T				U*				
Partner		D	I,F,T	I,F,T	I	I,F,T	I,F,T	D	D	U				
Partner Qualifier (if applicable)		D	I,F,T	I,F,T	I	I,F,T	I,F,T	D	D	U				
Process	R	D	I,F,T	I,F,T	I	I,F,T	I,F,T	D	D	U	B	B	B	B
Process Date/Time	R	D	I,F,T	I,F,T	I	I,F,T	I,F,T	D	D	U	B	B	B	B
System	R	D	I,F,T	I,F,T	I	I,F,T	I,F,T	D	D	U	B	B	B	B
System Message ID		D	I,F,T	I,F,T	I	I,F,T	I,F,T	D	D					
System Message Text		D	I,F,T	I,F,T	I	I,F,T	I,F,T	D	D					
Test/Production Indicator		D	I,F,T	I,F,T	I	I,F,T	I,F,T	D	D	U*				
Transaction Set			T	T		T	T	D	D	U*				
User (if applicable)		D	I,F,T	I,F,T	I	I,F,T	I,F,T	D	D	U				
User Reference		D	T	T		T	T	D	D	U				



USER EXIT FIELDS	Sterling Gentran, USER APPLICATION, AND Sterling Connect SYSTEM PROCESSES													
	A N Y G	O M	O E	O E X	N R	A R	I E	I M	I A X	A N Y U	O U	C M	C M O I	C M I
	Note: * - The parameter value is passed to the User Exit, if supplied by the process. Note: ** - The parameter value is passed to the User Exit by Sterling Gentran:Realtime processes.													
STATUS INFORMATION FIELDS														
Acknowledgement Status			I,F,T	I,F,T	I	I,F,T	I,F,T							
Acknowledgement Date/Time			I,F,T	I,F,T	I	I,F,T	I,F,T	D	D					
Compliance Status							T							
Compliance Date/Time			I,F,T	I,F,T	I	I,F,T	I,F,T	D	D					
Duplicate Indicator		D	I,F,T	I,F,T	I	I,F,T	I,F,T	D	D	U*				
Envelope Validation Status							I,F,T	D	D					
Envelope Validation Date/Time							I,F,T	D	D					
Mapping Validation Status		D						D	D					
Mapping Validation Date/Time		D						D	D					
Network Reconciliation Status			I	I	I	I								
Network Reconciliation Date/Time			I	I	I	I								
Return Code	R	D	I,F,T	I,F,T	I	I,F,T	I,F,T	D	D	U	B			
Sequence Checking Status							I,F,T	D	D					
Sequence Checking Date/Time							I,F,T	D	D					
EXCEPTION MANAGEMENT FIELDS														
Action Name (VP Exception Profile)	R	D	I,F,T	I,F,T	I	I,F,T	I,F,T	D	D		B	B	B	B
Capture Definition Name (VP Exception Profile)	R	D	I,F,T	I,F,T	I	I,F,T	I,F,T	D	D		B	B	B	B
Exception Profile Name (VP Exception Profile)	R	D	I,F,T	I,F,T	I	I,F,T	I,F,T	D	D		B	B	B	B
Item Type (VP Capture Definition)	R	D	I,F,T	I,F,T	I	I,F,T	I,F,T	D	D		B	B	B	B
Recipient Name (VP Exception Profile)	R	D	I,F,T	I,F,T	I	I,F,T	I,F,T	D	D		B	B	B	B
User Message ID (VP Capture Definition)	R	D	I,F,T	I,F,T	I	I,F,T	I,F,T	D	D		B	B	B	B
User Message Text (VP User Message Definition)	R	D	I,F,T	I,F,T	I	I,F,T	I,F,T	D	D		B	B	B	B
User Procedure Name (VP User Procedure Definition)	R	D	I,F,T	I,F,T	I	I,F,T	I,F,T	D	D		B	B	B	B

USER EXIT FIELDS	Sterling Gentran, USER APPLICATION, AND Sterling Connect SYSTEM PROCESSES													
	A N Y G	O M	O E	O E X	N R	A R	I E	I M	I A X	A N Y U	O U	C M	C M O I	C M I
	Note: * - The parameter value is passed to the User Exit, if supplied by the process. Note: ** - The parameter value is passed to the User Exit by Sterling Gentran:Realtime processes.													
<b>USER DATA FIELDS</b>														
User Data Record-1 (VP User Procedure Definition)	R	D	I,F,T	I,F,T	I	I,F,T	I,F,T	D	D		B	B	B	B
User Data Record-2 (VP User Procedure Definition)	R	D	I,F,T	I,F,T	I	I,F,T	I,F,T	D	D		B	B	B	B
User Data Record-3 (VP User Procedure Definition)	R	D	I,F,T	I,F,T	I	I,F,T	I,F,T	D	D		B	B	B	B
User Data Record-4 (VP User Procedure Definition)	R	D	I,F,T	I,F,T	I	I,F,T	I,F,T	D	D		B	B	B	B
<b>TRACKING MANAGEMENT FIELDS</b>														
User Item Type	R	D	I,F,T	I,F,T	I	I,F,T	I,F,T	D	D	U	B	B	B	B
Process Status Field 1										U*				
Process Status Field 2										U*				
Process Status Field 3										U*				
Trace ID (VP Tracking Management)		D	I,F,T	I,F,T	I	I,F,T	I,F,T	D	D	U	B	B	B	B
User Field 1										U*				
User Field 2										U*				
User Field 3										U*				
<b>COMMUNICATIONS FIELDS</b>														
Added Flag											B		B	
Batch ID											B	B	B	B
Batch Number			I				I				B	B	B	B
Collected Flag												B		
Communications Protocol												B		
Extracted Flag											B			B
Failure Code												B		
Incomplete Flag											B	B	B	B
Record Count											B	B	B	B
Remote ID											B	B	B	B
Requestable Flag											B	B	B	B
Transmitted Flag												B		

USER EXIT FIELDS	Sterling Gentran, USER APPLICATION, AND Sterling Connect SYSTEM PROCESSES													
	A N Y G	O M	O E	O E X	N R	A R	I E	I M	I A X	A N Y U	O U	C M	C M O I	C M I
	Note: * - The parameter value is passed to the User Exit, if supplied by the process. Note: ** - The parameter value is passed to the User Exit by Sterling Gentran:Realtime processes.													
Sterling Gentran:Realtime FIELDS**														
Databank System Indicator		D	I,F,T	I,F,T	I	I,F,T	I,F,T	D	D					
Option		D	I,F,T	I,F,T		I,F,T	I,F,T	D	D				B	B
Path ID		D	I,F,T	I,F,T		I,F,T	I,F,T	D	D				B	B
Queue File Number		D	I,F,T	I,F,T		I,F,T	I,F,T	D	D				B	B
CICS Task Number		D	I,F,T	I,F,T		I,F,T	I,F,T	D	D				B	B
CICS Transaction ID		D	I,F,T	I,F,T		I,F,T	I,F,T	D	D				B	B

## System Options – Error User Exit

### Overview

The Online Error User Exit can be optionally used to pass system error notification to user systems. When activated through the Sterling Gentran:Viewpoint System Options the Error User Exit is called (LINKED to) when an error is encountered in the Sterling Gentran:Viewpoint Scanner or Post Processor. The Exit should take any required action and return. A sample error user exit is provided in UTILITY.SOURCE (Member name: EDIVEXIT).

### Control Structure

The Sterling Gentran:Viewpoint system LINKs to the Error User Exit program when an error is encountered. The System Options specifies the Error User Exit program name. The User Exit then RETURNS.

### Parameters

The parameters passed to the Error User Exit are described below:

#### *Values to User Exit*

Record Position	Length	Format	Field Name
0001-0005	05	ZD	Error Message Number
0006-0025	20	AN	Error Exit Data
0026-0148	123	ZD	Reserved

Field Name	Description
Error Exit Data	A 20-character data area, as specified in the System Options for this queue file.
Error Message Number	The 5-digit error number which was encountered, resulting in the link to the Error User Exit.

## Sterling Gentran:Viewpoint User Gateways

**The Sterling Gentran:Viewpoint User Gateways are only available with the Tracking Management module.**

This section outlines the process required to enable a user application as a tracking point using the Sterling Gentran:Viewpoint User Gateways, and provides details on how the application interface and logic must be written.

The Sterling Gentran:Viewpoint User Gateways provide User applications the ability to interface with the Sterling Gentran:Viewpoint system. Two gateways are provided to allow either batch or online CICS user applications to become Sterling Gentran:Viewpoint enabled.

The Sterling Gentran:Viewpoint User Gateways are designed as subroutine programs to be used by any User applications system and/or process. Some examples of applications that may be implemented as Sterling Gentran:Viewpoint User Tracking Points, are business applications systems, such as purchasing and invoicing systems, and communications systems. The purpose of the Gateways is to allow user enabled applications to pass data to the Sterling Gentran:Viewpoint staging areas for subsequent processing.

For Sterling Gentran:Viewpoint, User Tracking Point information passed to the Sterling Gentran:Viewpoint system will only be available for Tracking Management.

Topics covered in this section include:

- Enabling User Applications as Tracking Points
- Trace IDs Within the Extended EDI System
- User Tracking Point Interface Logic
- User Gateway Processing Logic
- User Gateway Linkage Section

Details on the specific Batch and Online User Gateways are provided in separate sections in this chapter.

### Enabling User Applications as Tracking Points

Enabling user applications as tracking points, for use with Sterling Gentran:Viewpoint Tracking Management, involves the following steps:

1. Identifying the tracking path that the application is a part of,

2. Defining the application, or system/process, as a User Tracking Point to Sterling Gentran:Viewpoint,
3. Establishing the type of User Tracking Point: begins the tracking path, or is a part of the tracking path,
4. Developing the strategy for the application interface,
5. Building the application interface,
6. Making the necessary operational changes to enable the tracking process.

These steps are described below:

### Step 1. Identifying the Tracking Path

Once you have identified the documents or items you wish to monitor, you can then identify the route, or "tracking path", that the documents will travel along, and which Sterling Gentran:Viewpoint will track.

The tracking path can currently consist of user applications, or User Tracking Points, and Sterling Gentran Tracking Points. To maintain complete status and history information for an item, all tracking points along the tracking path must be enabled. "Breaking the chain" will not allow for reconciliation of statuses to a document or item.

An example of a tracking path with User Tracking Points is:

Purchasing System	User Tracking Point
Outbound Mapper	Sterling Gentran Tracking Point
Outbound Editor	Sterling Gentran Tracking Point
Outbound Databank Extract	Sterling Gentran Tracking Point
Communications System	User Tracking Point
Network Reconciliation	Sterling Gentran Tracking Point
Acknowledgment Reconciliation	Sterling Gentran Tracking Point

### Step 2. Defining the User Tracking Points

To define a user application as a User Tracking Point with Sterling Gentran:Viewpoint, the Extended System Management option can be used. The User Tracking Point Definition panel allows a user application to be specified (as a system/process) as well as an item type to be tracked, and names to be specified for statuses and user fields. These names will be used by Sterling Gentran:Viewpoint to store and display the information passed to the Sterling Gentran:Viewpoint system.

Refer to "EDIM611 – User Tracking Point Definition Panel" in the *IBM® Sterling Gentran:Viewpoint® for z/OS® Release 6.6 User Guide*, Chapter 5, "Panel Descriptions" for details on defining User Tracking Points.

### Step 3. Establishing the Type of User Tracking Point

There are two attributes that can be associated with User Tracking Points:

- whether the User Tracking Point starts a tracking path,
- whether the User Tracking Point is proprietary software or third party software.

In the specific example given above, the Purchasing System is an example of a User Tracking Point that starts a tracking path and could be proprietary, and the Communications System is an example of a User Tracking Point that does not start a tracking path and could be third party software.

These distinctions are important to make so that the strategy and obligations of the application interface to Sterling Gentran:Viewpoint can be made.

#### **Step 4. Developing the Strategy for the Application Interface**

When the type of User Tracking Point has been determined, then the strategy for interfacing with Sterling Gentran:Viewpoint can be developed.

Typically, three scenarios exist for modifying User Tracking Point processes:

1. The application can be modified by the user.  
The application is proprietary and the user has the ability to meet all requirements of the Sterling Gentran:Viewpoint User Gateways. The user is also able to process Trace IDs (unique identifiers) that must be associated with tracked items.  
Refer to sections "Trace IDs Within the Extended EDI System" and "User Tracking Point Interface Logic" below, for detailed information on handling Trace IDs, and the logic required in the application interface.
2. The application is third party software that contains appropriate user exit points.  
The third party software may contain exits at appropriate points to handle the requirements as a User Tracking Point.  
For example: An outbound communications system would require exits at the start and end of processing, and after processing each item (for example, batch), and on error conditions. Most importantly, the application must be able to handle the Sterling Gentran:Viewpoint User Tracking Record being passed to the application.  
Refer to sections "Trace IDs Within the Extended EDI System" and "User Tracking Point Interface Logic" for detailed information on these requirements.
3. The application is third party software that does NOT have appropriate user exit points.  
In a third party software system, some of the User Tracking Point's requirements may not be met by user exits. The user can place a job step, or task, before the third party software and pass information to Sterling Gentran:Viewpoint about items to be processed.  
For example: The supplied sample application "VPOBCOMM", in Appendix B, "Sample Programs", illustrates how this type of application interface can be used to process and track data prior to communications.

## Step 5. Building the Application Interface

Making the modifications to the user application, or User Tracking Point process, involves adhering to the requirements for processing Trace IDs and calling the Sterling Gentran:Viewpoint User Gateway.

Sterling Gentran:Viewpoint Tracking Management provides sample applications that may be used to complete the required obligations. The samples represent four typical User Tracking Points:

- Outbound Application prior to Sterling Gentran processes (begins tracking path)
- Outbound Application after Sterling Gentran processes (part of tracking path)
- Inbound Application prior to Sterling Gentran processes (begins tracking path)
- Inbound Application after Sterling Gentran processes (part of tracking path)

Details of implementing the interface changes are described below in "Trace IDs Within the Extended EDI System", "User Tracking Point Interface Logic", and "User Gateway Processing Logic".

## Step 6. Making Operational Changes

To complete the process of enabling a User Tracking Point for use in Tracking Management, three operational changes must be completed:

1. Ensure that all tracking points on the required tracking path are enabled  
The Sterling Gentran Tracking Point and User Tracking Point directories can be checked online under the Extended System Management option. If any required tracking point is not enabled, then this can be completed online.
2. Parameters used in the JCL streams for the tracking path are correctly specified  
Any JCL streams that are used for the enabled tracking paths must have the parameter specified. This parameter indicates to the Sterling Gentran processes, to pass the Sterling Gentran:Viewpoint User Tracking record to the User Tracking Points.  
For the Outbound Editor, the parameter TRACK OUTPUT FILES must be specified.  
For the Inbound Mapper, the parameter Sterling Gentran:Viewpoint User Tracking must be set.
3. Add the required files to your Batch JCL and CICS Region Start-up JCL.  
The Sterling Gentran:Viewpoint User Gateway requires six (6) files. These files must be added to the batch JCL or CICS Region start-up JCL for the User Tracking Point. The required files are:

EDICFG	Configuration File
ERRCTL	Error Message and Control File
EDIVP	Profile File



EDIVSF	Staging File (one staging file per User Tracking Point)
EDIVT	Trace ID File (only required for batch User Tracking Points beginning a tracking path)
EDIVTO	Online Trace ID File (only required for online User Tracking Points beginning a tracking path)

### *Trace IDs Within the Extended EDI System*

For Sterling Gentran:Viewpoint Tracking Management, the User Gateways allow user enabled systems and processes to pass information to Sterling Gentran:Viewpoint. Users may modify User Tracking Point processes to facilitate the tracking of their business data into non-Sterling Gentran portions of their Extended EDI systems.

In order for items within the Extended EDI system to be tracked by Sterling Gentran:Viewpoint each monitored item must be identified by a Sterling Gentran:Viewpoint assigned Trace ID. A Trace ID is a unique ten character alphanumeric value associated with every monitored item. The Trace ID is obtained from the Trace ID file (EDIVT) for batch user processes and from the Online Trace ID file (EDIVTO) for online user processes. A Trace ID must be assigned to the lowest level item at which a user process handles the data. For example, a user application tracking program must assign a Trace ID to each business document, while a communications tracking program must assign a Trace ID to each communications batch/file.

#### **Establishing/Forwarding the Trace ID**

After an item (for example, document) is created it will travel through a number of processes (tracking points) to complete its' purpose. The set of tracking points that a tracked item travels through is called the Tracking Path. The first process to call Sterling Gentran:Viewpoint to trace an item, is considered to be the originating tracking point. This tracking point must call and receive a unique Trace ID from Sterling Gentran:Viewpoint for the item. This Trace ID must be passed along with the item to subsequent processes. In the case of User Tracking Points, this is accomplished by using the Sterling Gentran:Viewpoint User Tracking Record. When these subsequent processes receive the items they will call the Sterling Gentran:Viewpoint gateway and pass the Trace ID along with status information about the item to Sterling Gentran:Viewpoint.

When the tracking point is a user application, the application must pass the Trace ID and the item, as well as meet its obligations to the Sterling Gentran:Viewpoint Gateway.

When the tracking point is a Sterling Gentran process, all handling of the Trace ID and Gateway obligations are handled for the user.

#### **User Tracking Point Processes beginning a Tracking Path**

In the case where the User Tracking Point process begins the tracking path, the process must obtain and assign Trace IDs to each lowest level item by inserting Sterling Gentran:Viewpoint User Tracking Records into the data. The typical scenario for this involves User Tracking Points that pass data to Sterling Gentran processes, such as an outbound user application, or an inbound communication application. The Sterling Gentran process that inputs the data from the User Tracking Point process will use the Trace ID already assigned to the items, so that Tracking Management can correctly track the history of the monitored items.

### User Tracking Point Processes as a part of a Tracking Path

In the case where the User Tracking Point process is a part of the tracking path, but does not begin the tracking path, the process must accept the Trace ID assigned to the item(s) on the Sterling Gentran:Viewpoint User Tracking Record(s) passed with the data. The typical scenario for this involves User Tracking Points that receive data from Sterling Gentran processes, such as an outbound communications application, or an inbound user application. The User Tracking Point program that inputs the data from the Sterling Gentran process must use the Trace ID already assigned to the item(s), so that Tracking Management can correctly track the history of the monitored items.

### Sterling Gentran:Viewpoint User Tracking Record

The Sterling Gentran:Viewpoint User Tracking Record is used by User Tracking Point processes to pass or obtain the unique Trace ID for items to be monitored by Sterling Gentran:Viewpoint Tracking Management.

The placement of the User Tracking Record, in the input or output data stream, depends on which Sterling Gentran process the data is going to or coming from. If one User Tracking Point is passing data to another User Tracking Point, then the rules of placement can be determined by the user. The requirements for interfacing with Sterling Gentran processes are listed below. These requirements are illustrated in “Typical Trace ID Requirements” later in this chapter.

Direction	Process	User Tracking Record Placement
Outbound	Going to Sterling Gentran (Example: to Outbound Mapper)	Record must FOLLOW the data records for an item (Example: document).
	Coming from Sterling Gentran (Example: from Outbound Editor)	Record will PRECEDE the data records for an item (Example: batch for communications).
Inbound	Going to Sterling Gentran (Example: Inbound Editor)	Record must PRECEDE the data records for an item (Example: batch from communications).
	Coming from Sterling Gentran (Example: from Inbound Mapper)	Record will FOLLOW the data records for an item (Example: document).

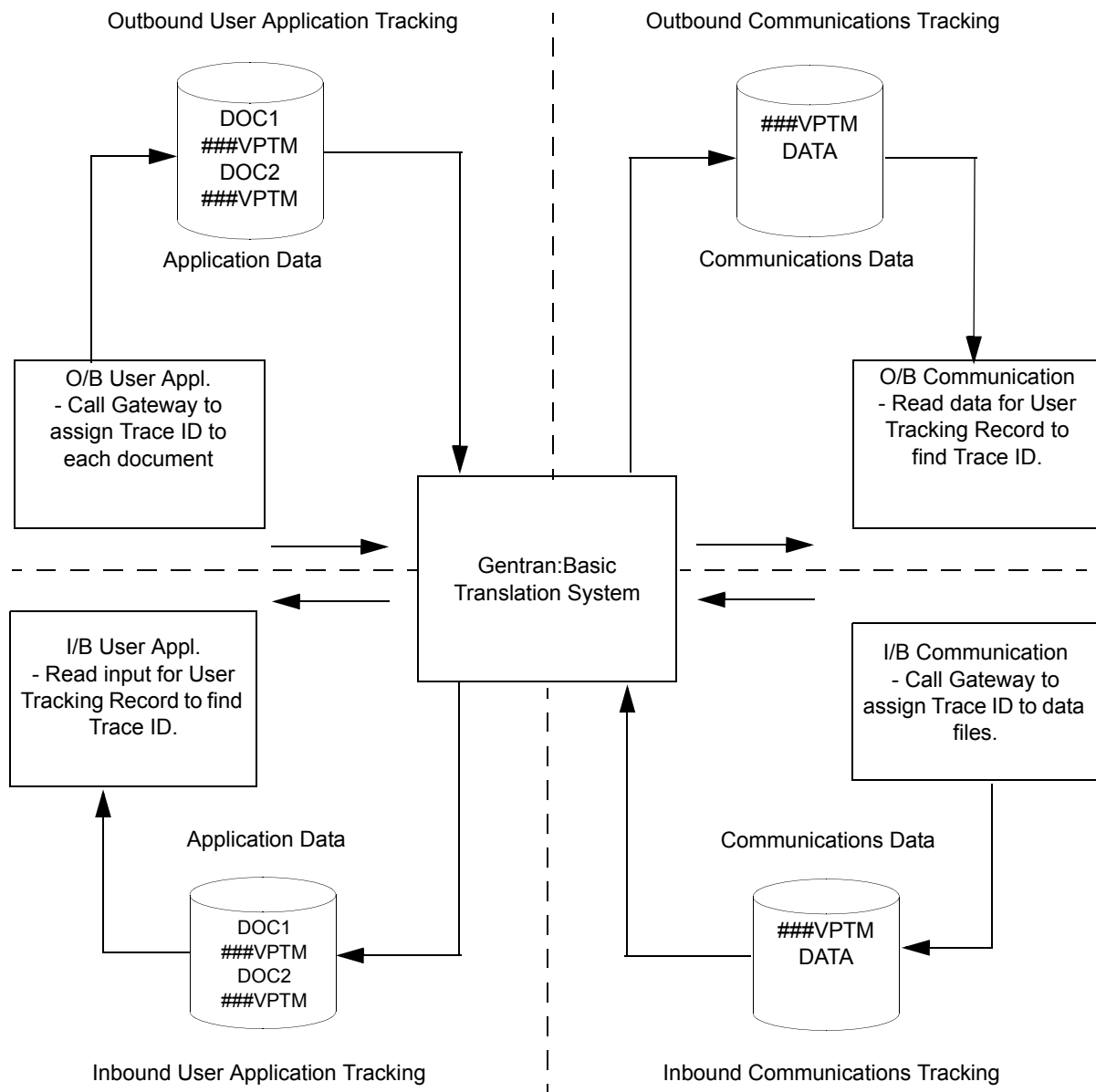
The User Tracking Record must have the following format:

Position	Field Content	COBOL Picture	Format	Length	Description
001 – 007	Instream Sterling Gentran:Viewpoint Tracking Identifier	X(07)	AN	07	Literal Constant "###VPTM"

008 – 008	Filler	X(01)	AN	01	Not used
009 – 018	Sterling Gentran:Viewpoint Tracking Trace ID	X(10)	AN	10	A unique ID value, generated by Sterling Gentran:Viewpoint, that identifies the item in the Sterling Gentran:Viewpoint Tracking Management system.

**Typical Trace ID Requirements**

Figure 4.1 illustrates the typical Trace ID processing requirements for User Tracking Point processes, at the four corners of the Sterling Gentran:Basic translation system.



**Figure 4.1 Trace ID Requirements for User Tracking Points**

## User Tracking Point Interface Logic

User Tracking Point processes must be modified to allow them to pass information to Sterling Gentran:Viewpoint. This interface must be able to perform two major functions:

- Call the Sterling Gentran:Viewpoint User Gateway at the appropriate times, and in the correct sequence.
- Process Trace IDs for items.

Depending on whether the user application is enabled to run in batch or CICS, the interface to the Sterling Gentran:Viewpoint staging area will either be provided by the Sterling Gentran:Viewpoint User Batch Gateway, or the Sterling Gentran:Viewpoint User Online Gateway. Both Gateways provide similar operations that must be requested in a specified order to correctly pass information.

Trace IDs are described in the section "Trace IDs Within the Extended EDI System", and processing them depends on the type of User Tracking Point. The two types of User Tracking Points are those that begin a tracking path, and those that are a part of a tracking path. The essential difference in processing Trace IDs is whether the unique Trace ID for tracking items needs to be obtained from Sterling Gentran:Viewpoint, or from a User Tracking record that is passed with the data.

The interface logic required for the two types of User Tracking Points follows:

### For User Tracking Points that begin a tracking path:

1. At the beginning of processing:
  - Call the Sterling Gentran:Viewpoint User Gateway to open files and check configuration.
2. For each item to be processed:
  - Call the Sterling Gentran:Viewpoint User Gateway and obtain a unique Trace ID. This Trace ID will be used to uniquely track the item as it travels and is transformed throughout the extended EDI system.

For more information on Trace IDs, refer to section "Trace IDs Within the Extended EDI System" earlier in this chapter.

- Write the Sterling Gentran:Viewpoint User Tracking record to the output data file. This record contains the Trace ID and must follow the data records for the item for business applications, or the Sterling Gentran:Viewpoint User Tracking record must precede the data records for the item for communication application as outlined in section "Trace IDs Within the Extended EDI System".
- Optionally call the Sterling Gentran:Viewpoint User Gateway, one or more times, to pass any user messages to Sterling Gentran:Viewpoint. These messages will be associated with the item when viewing it online, through Tracking Management query requests.

- Call the Sterling Gentran:Viewpoint User Gateway once to pass item status and information to Sterling Gentran:Viewpoint. This information will be available online when viewing the results of query requests.
3. On error conditions:
    - Call the Sterling Gentran:Viewpoint User Gateway to abnormally terminate. This should be done when either the User Tracking Point process does not complete successfully, or when a previous call to the User Gateway completed unsuccessfully.
  4. At end of processing:
    - Call the Sterling Gentran:Viewpoint User Gateway to terminate normally. This should only be done if all processing has completed successfully.

**For User Tracking Points that are a part of a tracking path:**

1. At the beginning of processing:
  - Call the Sterling Gentran:Viewpoint User Gateway to open files and check configuration.
2. For each item to be processed:
  - Read the Sterling Gentran:Viewpoint User Tracking Record in the input data and obtain the unique Trace ID for the item. The placement of the record in the data is outlined in the section "Trace IDs Within the Extended EDI System".
  - Write the Sterling Gentran:Viewpoint User Tracking Record to the output data file if a subsequent process is also being tracked. This record contains the Trace ID and will follow the data records for the item, for communication applications, or the Sterling Gentran:Viewpoint User Tracking Record will follow the data records for the item for business applications.
  - Optionally call the Sterling Gentran:Viewpoint User Gateway, one or more times, to pass any user messages to Sterling Gentran:Viewpoint. These messages will be associated with the item when viewing it online through Tracking Management query requests.
  - Call the Sterling Gentran:Viewpoint User Gateway once to pass item status and information to Sterling Gentran:Viewpoint. This information will be available online when viewing the results of query requests.
3. On error conditions:
  - Call the Sterling Gentran:Viewpoint User Gateway to abnormally terminate. This should be done when either the User Tracking Point process does not complete successfully, or when a previous call to the User Gateway completed unsuccessfully.
4. At end of processing:
  - Call the Sterling Gentran:Viewpoint User Gateway to terminate normally. This should only be done if all processing has completed successfully.

## User Gateway Processing Logic

The Sterling Gentran:Viewpoint User Gateways provide six operations to allow user application programs to interface with Sterling Gentran:Viewpoint. The operations are:

01	Initialization
10	Pass User Messages to Sterling Gentran:Viewpoint
20	Pass Item Status Information to Sterling Gentran:Viewpoint
30	Assign a Unique Trace ID
90	Normal Termination
99	Abnormal Termination

Every User Tracking Point process that has been enabled for Sterling Gentran:Viewpoint MUST request the Initialization operation and one of the Termination operations. The other operations are optional, depending on the type of User Tracking Point and the user's intentions, as described in the specific operations below.

In order to request operations, the calling programs must set the appropriate fields in the Gateway linkage section. Prior to returning control to the calling program, the Gateway will always set three linkage fields indicating the processing status for the requested operation. The three linkage section fields, which are defined in the supplied COBOL copybook (LSN300) under "Control values returned from the Gateway", are Status Code, Error Level, and Return Message. The linkage section is described in "User Gateway Linkage Section".

Status Code	Indicates whether the requested Gateway operation was successfully performed.
Error Level	Indicates the severity of any error encountered during Gateway processing.
Return Message	If an error was encountered, Return Message may contain a text message explaining the error.

The calling program must always check these fields after requesting a Gateway operation. If any Gateway operation is unsuccessful, all subsequent Gateway calls should be suspended, and a call for Abnormal Termination should be requested from the Gateway. It is recommended that calling program processing should terminate as soon as a Gateway error is encountered.

The following sections describe each of the Gateway operations provided. Each operation will be described in terms of the actions required by the calling programs, before and after requesting the operation.

### Initialization

This operation must be the first operation requested by the Sterling Gentran:Viewpoint enabled calling program. The Gateway will open files and check the configuration and Sterling Gentran:Viewpoint system files, to determine if the user application is currently enabled as a Sterling Gentran:Viewpoint Tracking Point.

1. Caller's Obligations prior to request.

The calling program MUST set the following linkage section fields:

- Operation—Set value to 01
- System
- Process
- Process-Date
- Process-Time

2. Caller's Obligations upon return.

The calling program must check the following linkage section fields:

Status Code	If the Status Code contains a value of 16, then the Sterling Gentran:Viewpoint Gateway was unable to perform its' initialization tasks.
Error Level/Return Message	Check Error Level and Return Message for more information about errors. If initialization was unsuccessful, then the only other Gateway operation that should be requested is Abnormal Termination.
Tracking Management Installation Indicator	If the value returned is 'D', then Sterling Gentran:Viewpoint Tracking Management has not been properly installed or integrated with Sterling Gentran:Basic. Therefore, no further Gateway processing should be requested except for Abnormal Termination. For more information about installing Sterling Gentran:Viewpoint, refer to the <i>IBM® Sterling Gentran:Viewpoint® for z/OS® Release 6.6 Installation Guide</i> .
Tracking Point Indicator	If the valued returned is 'D', then the User Tracking Point has not been properly defined to the Sterling Gentran:Viewpoint system. Therefore, no further Gateway processing should be requested except for Abnormal Termination. For more information on Defining User Tracking Points, refer to the <i>IBM® Sterling Gentran:Viewpoint® for z/OS® Release 6.6 User Guide</i> , Chapter 5, “Panel Descriptions”.



### Pass User Message to Sterling Gentran:Viewpoint

This operation may be requested by User Tracking Programs that wish to associate user messages to an item in Sterling Gentran:Viewpoint. Any messages passed to Sterling Gentran:Viewpoint, for an item, can be displayed using the online component of Sterling Gentran:Viewpoint. All messages relating to an item must be passed prior to the operation to pass item status information, in order for Sterling Gentran:Viewpoint to correctly associate the message to the item. This operation results in a Message type record being written to the Staging File.

1. Caller's Obligations prior to request.

The calling program MUST set the following linkage section fields:

- Operation—Set value to 10
- Message Text

The calling program may optionally set the following linkage section fields, if applicable:

- Message Number
- Message Severity
- Message Error Level

2. Caller's Obligations upon return.

The calling program must check the following linkage section fields:

Status Code	If the Status Code contains a value of '16', then the Sterling Gentran:Viewpoint Gateway was unable to pass the user message to Sterling Gentran:Viewpoint.
Error Level/Return Message	Check Error Level and Return Message for more information about errors.
Staging File Full Indicator	When writing to the Staging file, the Gateway will check if the file is full, and set the indicator to 'Y'. The user application should check this indicator and the return message to determine whether the user application should terminate or continue processing.

The return message will contain:

**EDI-51120-F 16**

Staging File Full, Processing Terminated, Staging File:  
(staging file number)

**OR**

**EDI-51125-W 04**

Staging File Full, Processing Continues, Staging File:  
(staging file number)

### Pass Item Status Information to Sterling Gentran:Viewpoint

This operation may be requested by the User Tracking Program to pass control and status information for an item to Sterling Gentran:Viewpoint. This operation should be called by the User Tracking Point, once for each item to be tracked by Sterling Gentran:Viewpoint. This operation results in a Reference type record being written to the Staging File. All items must have a unique Trace ID assigned. If a Trace ID is not provided within the Sterling Gentran:Viewpoint User Tracking record, then the Gateway must be called to assign a unique Trace ID. For more information about Trace ID, refer to “Trace IDs Within the Extended EDI System” above.

1. Caller's Obligations prior to request.

The calling program MUST set the following linkage section fields:

- Operation—Set value to 20
- System
- Process
- Trace ID
- Process Date
- Process Time
- Direction
- Partner
- User Reference

The calling program may optionally set any other data values that are provided in the linkage section (for example, Application ID, User Fields).

**Note:** The Process Date and Process Time fields should only be reset if you want each item to reflect different processing times. In most cases, the date and time that the application program started (Gateway Initialization) will be marked on all items processed during the job.

2. Caller's Obligations upon return.

The calling program must check the following linkage section fields:

Status Code	If the Status Code contains a value of 16, then the Sterling Gentran:Viewpoint Gateway was unable to pass the user message to Sterling Gentran:Viewpoint.
Error Level/Return Message	Check Error Level and Return Message for more information about errors.

Staging File Full Indicator      When writing to the Staging file, the Gateway will check if the file is full and sets the indicator to 'Y'. The user application should check this indicator and the return message, to determine whether the user application should terminate or continue processing.

The return message will contain:

**EDI-51120-F 16**

Staging File Full, Processing Terminated, Staging File:  
(staging file number)

or

**EDI-51125-W 04**

Staging File Full, Processing Continues, Staging File:  
(staging file number)

### Assign a Unique Trace ID

This operation should be requested to obtain a unique Trace ID for an item that is to be tracked by Sterling Gentran:Viewpoint. All items that are to be tracked by Sterling Gentran:Viewpoint must be identified by a Sterling Gentran:Viewpoint assigned Trace ID. For more information about Trace ID, refer to "Trace IDs Within the Extended EDI System" above.

1. Caller's Obligation prior to request.

The calling program MUST set the following linkage section field:

- Operation—Set value to 30

2. Caller's Obligations upon return.

The calling program must check the following linkage section fields:

Status Code      If the Status Code contains a value of '16', then the Sterling Gentran:Viewpoint Gateway was unable to assign a Trace ID.

Error Level/Return Message      Check Error Level and Return Message for more information about errors.

Trace ID      The Trace ID returned must be passed to Sterling Gentran:Viewpoint in the operation "Pass Item Status Information to Sterling Gentran:Viewpoint".

### Normal Termination

This operation should be the last operation requested by the Sterling Gentran:Viewpoint enabled calling program. The Gateway will close all opened files and commit the data that was passed during the current User Tracking Point program run. This operation should be called during the User Tracking Point program's termination processing, provided it has completed successfully.

1. Caller's Obligation prior to request.

The calling program MUST set the following linkage section field:

- Operation—Set value to 90

2. Caller's Obligations upon return.

The calling program must check the following linkage section fields:

Status Code	If the Status Code contains a value of 16, then the Sterling Gentran:Viewpoint Gateway was unable to perform its' termination tasks.
Error Level/Return Message	Check Error Level and Return Message for more information about errors. If Sterling Gentran:Viewpoint Termination was not successful, the calling program should request the Abnormal Termination operation, to ensure that all files are properly closed.

### Abnormal Termination

This operation must be the last operation requested by the Sterling Gentran:Viewpoint enabled calling program if an error is encountered. The Gateway will close all opened Sterling Gentran:Viewpoint files. This operation should be requested if the User Tracking program completes unsuccessfully, and the data which has been passed to Sterling Gentran:Viewpoint should not be processed by Sterling Gentran:Viewpoint. This operation should also be requested if any prior Gateway request completed unsuccessfully. If the Gateway is terminated using this operation all data passed to the Gateway through message and reference operations will not be processed by Sterling Gentran:Viewpoint.

1. Caller's Obligation prior to request.

The calling program must set the following linkage section field:

- Operation—Set value to 99

2. Caller's Obligations upon return.

The calling program must check the following linkage section fields:

Status Code	If the Status Code contains a value of 16, then the Sterling Gentran:Viewpoint Gateway was unable to perform its abnormal termination tasks.
Error Level/Return Message	Check Error Level and Return Message for more information about errors. If Sterling Gentran:Viewpoint Abnormal Termination was not successful, you should investigate the error situation.

## User Gateway Linkage Section

### Parameters

The parameters passed and returned from the Sterling Gentran:Viewpoint User Gateways are illustrated in the User Gateway Linkage Section Parameters Chart.

The linkage section is divided into four logical sections, based on:

- whether the values are passed from the Gateway to the Caller, **or**
- from the Caller to the Gateway, **and**
- whether the values are used as control values when interfacing with the gateway, **or**
- data values for use in Sterling Gentran:Viewpoint's online system.

### Structure

Position	This column specifies the position of the field within the linkage section.
Field Name	This column lists the COBOL field names in the User Gateway linkage section copybook, LSN300.
Req	This column indicates whether the field is mandatory or optional: <ul style="list-style-type: none"><li>• <b>M</b> Mandatory</li><li>• <b>O</b> Optional</li></ul> <p><b>Note:</b> The conditions, when the field is mandatory, depend on the User Gateway operation. Refer to section "User Gateway Processing Logic" earlier in this chapter.</p>
Resp	This column indicates whether the User program or Gateway is required to set the field.
Len	This column indicates the length of the field.
Type	This column indicates the data type of the field: <ul style="list-style-type: none"><li>• <b>AN</b> Alphanumeric</li><li>• <b>N</b> Numeric</li><li>• <b>DT</b> Date</li><li>• <b>TM</b> Time</li></ul>
Description	The column provides a description of the field.

Position	Field Name	Req	Resp	Len	Type	Description
<b>Control Values Passed To Gateway</b>						
001-002	LSN300-ENTRY-POINT	M	U	02	AN	Gateway operation '01' = Initialization '10' = Pass User Message '20' = Pass Item Status '30' = Assign Unique Trace ID '90' = Normal Termination '99' = Abnormal Termination
003-007	LSN300-GATEWAY-VERSION	M	U	05	AN	The current version of the User Gateway '01.00'.
<b>Control Values Returned From Gateway</b>						
008-008	LSN300-VP-TM-IND	M	G	01	AN	Tracking Management Installation Indicator 'Y' = TM installed 'N' = TM not installed
009-009	LSN300-TRACKING-POINT-IND	M	G	01	AN	User Tracking Point Indicator 'E' = Enabled 'D' = Disabled
010-011	LSN300-STATUS	M	G	02	AN	Gateway Status for the requested operation. '00' = Successful operation '16' = Unsuccessful operation
012-013	LSN300-ERROR-LEVEL	M	G	02	AN	Highest error level which occurred in the User Gateway. '00' = No errors '04' = Warning '08' = Error '12' = Severe error '16' = Fatal error
014-113	LSN300-RETURN-MESSAGE	M	G	100	AN	Gateway Error Message text returned for unsuccessful operations.
114-123	LSN300-TRACE-ID	M	U/G	10	AN	Sterling Gentran:Viewpoint Trace ID for the item.
<b>Data Values To Gateway</b>						
124-133	LSN300-SYSTEM	M	U	10	AN	User Tracking Point System that processed the item.
134-141	LSN300-PROCESS	M	U	08	AN	User Tracking Point Process that processed the item.
142-149	LSN300-DATE	M	U	08	DT	Process date (YYYYMMDD)
150-157	LSN300-TIME	M	U	08	TM	Process time (HHMMSSSTS)
158-167	LSN300-APPLICATION-ID	O	U	10	AN	Application Data ID for the item.
168-168	LSN300-DIRECTION	M	U	01	AN	Direction of the item. 'O' = Outbound 'I' = Inbound
169-171	LSN300-DIVISION	O	U	03	AN	Division Code of the owner of the item.
172-172	LSN300-DUPLICATE-IND	O	U	01	AN	Duplicate Indicator 'Y' = Duplicate application item 'N' = Non-duplicate application item
173-187	LSN300-NETWORK-ID	O	U	15	AN	Network ID for the item.
188-222	LSN300-PARTNER	M	U	35	AN	Partner ID that processed the item.

223-226	LSN300-PARTNER-QUAL	O	U	04	AN	Partner Qualifier that processed the item. (Only required if Trading Profile mode is Partner-Qualifier.)
227-236	LSN300-PROCESS-STATUS-1	O	U	10	AN	Process Status 1 indicates a status from the user application for this item. The application may set up to three Process Statuses for each item. These status fields correspond with the status fields on the User Tracking Point Definition panel.
237-246	LSN300-PROCESS-STATUS-2	O	U	10	AN	Process Status 2
247-256	LSN300-PROCESS-STATUS-3	O	U	10	AN	Process Status 3
257-257	LSN300-TEST-PROD-IND	O	U	01	AN	Test Production Indicator indicates whether the item is considered test or production by the application. T = Test P = Production
258-263	LSN300-TRANS-SET	O	U	06	AN	EDI Transaction Set ID for the item.
264-278	LSN300-USER	O	U	15	AN	User ID that processed the item. (Only valid if Trading Profile Mode is Relationship.)
279-293	LSN300-USER-FIELD-1	O	U	15	AN	User Field 1 contains any user information about the item. Up to 3 User Fields can be passed and they correspond with the user fields on the User Tracking Point Definition panel.
294-308	LSN300-USER-FIELD-2	O	U	15	AN	User Field 2
309-323	LSN300-USER_FIELD-3	O	U	15	AN	User Field 3
324-339	LSN300-USER-ITEM-TYPE	M	U	16	AN	User Item Type as defined in the User Tracking Point Definition panel. U:[type]
340-384	LSN300-USER-REFERENCE	M	U	45	AN	User Reference for the item.
385-390	LSN300-MSG-NR	O	U	06	N	User Message Number associated with a user message for an item.
391-391	LSN300-SEVERITY	O	U	01	AN	User Message Severity Code associated with a user message for an item.
392-393	LSN300-ERROR-LEVEL	O	U	02	AN	User Message Error Level associated with a user message for an item.
394-543	LSN300-MESSAGE-TEXT	M	U	150	AN	User Message Text associated with an item and passed in the 'Pass User Message' operation.
						<b>Data Values From Gateway</b>
544-551	LSN300-VSF-ADD-COUNT	O	G	08	N	The number of Staging File Records added for the current run.
552-554	LSN300-VSF-PERCENT-USED	O	G	03	N	Percentage of Staging File used. This should be monitored to ensure that the staging file does not become full.
555-555	LSN300-VP-VSF-FULL-IND	O	G	01	AN	Staging File full indicator. 'Y' = Full 'N' = Not full

## User Batch Gateway – EDIN300

### Purpose

The User Batch Gateway is only available with the Tracking Management module.

The User Batch Gateway is a batch subroutine that provides batch user applications with an interface to the Sterling Gentran:Viewpoint Staging Files.

### Operation

The User Batch Gateway operates as a COBOL subroutine called by user written applications tracking programs.

### Inputs

The following files are input to this program.

DDname	File Name
EDICFG	GENTRAN:Basic Configuration File
ERRCTL	Error Message and Control File
EDIVP	GENTRAN:Viewpoint Profile File
EDIVT	GENTRAN:Viewpoint Trace ID File

### Outputs

The following files are output from this program.

DDname	File Name
EDIVSF	GENTRAN:Viewpoint Staging File
EDIVT	GENTRAN:Viewpoint Trace ID File

### Linkage Section

The linkage section area is used to pass information to and from the User Batch Gateway. The linkage section is divided into four logical sections. The four sections are:

- Control Values Passed to Gateway
- Control Values Returned from Gateway
- Data Values Passed to Gateway
- Data values Passed from the Gateway.

#### Control Values Passed to Gateway

This section is used by the calling program to pass values that direct the processing of the User Batch Gateway. This area must be set for every call to the Gateway.



**Control Values Returned from Gateway**

This section is used by the Gateway, to return values that indicate the status of Gateway processing to the calling program. This area will always be set by the Gateway prior to returning to the calling programs. The calling programs must check the values returned to determine whether further Gateway processing may be performed.

**Data Values Passed to Gateway**

This section is used by the calling program, to pass data to the User Batch Gateway, that the user tracking program wishes to have passed to the Sterling Gentran:Viewpoint Staging area.

**Data Values Passed from Gateway**

This section is used by the Gateway to return useful data, such as summary totals, to the calling program.

The linkage section is included in a COBOL copybook named LSN300 in UTILITY.SOURCE. Refer to “User Gateway Linkage Section” above for more information.

## User Online Gateway – EDIX970

### Purpose

The User Online Gateway is only available with the Tracking Management module.

The User Online Gateway is a CICS subroutine program that provides CICS user applications an interface to the Sterling Gentran:Viewpoint Staging Files.

### Operation

The User Online Gateway operates as a linked COBOL subroutine program, to a user written application tracking program.

### File Access

The following files are used by this program.

DDname	File Name	File Access
EDICFG	GENTRAN:Basic Configuration File	read, browse
ERRCTL	Error Message and Control file	read, browse
EDIVP	GENTRAN:Viewpoint Profile File	read, browse, update
EDIVnnnn	GENTRAN:Viewpoint Staging TSQ File	read, browse, update
EDIVTO	GENTRAN:Viewpoint Online Trace ID File	read, browse, update
EDIVTMQ	GENTRAN:Viewpoint Temporary Working File	read, browse, delete

### Linkage Section

The linkage section area is used to pass information to and from the User Online Gateway. The linkage section is divided into four logical sections. The four sections are:

- Control Values Passed to Gateway
- Control Values Returned from Gateway
- Data Values Passed to Gateway
- Data values Passed from the Gateway.

#### Control Values Passed to Gateway

This section is used by the calling program to pass values that direct the processing of the User Online Gateway. This area must be set for every call to the Gateway.

**Control Values Returned from Gateway**

This section is used by the Gateway, to return values that indicate the status of Gateway processing to the calling program. This area will always be set by the Gateway, prior to returning to the calling programs. The calling programs must check the values returned, to determine whether further Gateway processing may be performed.

**Data Values Passed to Gateway**

This section is used by the calling program, to pass data to the User Online Gateway, that the user tracking program wishes to have passed to the Sterling Gentran:Viewpoint Staging area.

**Data Values Passed from Gateway**

This section is used by the Gateway to return useful data, such as summary totals, to the calling program.

The linkage section is included in a COBOL copybook named LSX970 in UTILITY.SOURCE. Refer to the “User Gateway Linkage Section” above for more details.

## Tracking User Exit

### Overview

**The Tracking User Exit is only available with the Tracking Management module.**

The Tracking User Exit supports interfaces to an online user exit transaction, and can be invoked each time an item is processed by the Sterling Gentran:Viewpoint Post Processor. This provides the ability to post tracking information to an alternate repository, such as a database, from which you can perform your own queries or reports.

Data is passed to the user exit in a common format which is described under “Parameters”. This format is used by both Exception Management Exception Action User Exits, and the Tracking Management Tracking User Exit. Refer to “Tracking User Exit” in the *IBM® Sterling Gentran:Viewpoint® for z/OS® Release 6.6 User Guide*, the “Optional Features” section in the “Implementation Process” chapter in this guide for procedures to initiate the Tracking User Exit.

### User Exit Processing Logic

The online tracking user exit is initiated via a CICS START command, with a FROM parameter containing the Sterling Gentran:Viewpoint data. The online exit should access this data using the CICS RETRIEVE command. Once started, the online exit runs independently from Sterling Gentran:Viewpoint and does not return any status information. A sample online tracking user exit program is provided in UTILITY.SOURCE (member name: EDIVTMUX).

### Parameters

For a list of the parameters passed to the Tracking User Exit, refer to “PARAMETERS” in the “Exception Action User Exit” section of this chapter.

# Job Control Language

Appendix A lists the JCL members for the Sterling Gentran:Viewpoint Base system and Tracking Management module.

<b>Topic</b>	<b>Page</b>
Sterling Gentran:Viewpoint Base (Exception Management) JCL.....	A-2
Sterling Gentran:Viewpoint Tracking Management JCL .....	A-2

## **Sterling Gentran:Viewpoint Base (Exception Management) JCL**

The JCL members for the Sterling Gentran:Viewpoint Base (Exception Management) system are:

<b>Member Name</b>	<b>Description</b>
EDIG010	Online JCL File Maintenance JCL
EDIN130	Staging File Initialize JCL
EDIN140	Maintenance/Inquiry JCL
EDIN200	Batch Action Processor JCL
VPTUTIN	Sterling Gentran:Viewpoint Tutorial Inbound
VPTUTOUT	Sterling Gentran:Viewpoint Tutorial Outbound
VPTUT010	Sterling Gentran:Viewpoint Tutorial Online JCL File Maintenance
VPTUT200	Sterling Gentran:Viewpoint Tutorial Batch Action Processor
<b>The following JCL members are for Sterling Gentran:Plus users only:</b>	
EDIN110	STOUTL Report Processor JCL
EDIN120	Sterling Gentran:Viewpoint Communications Re-Org JCL
EDIN150	Communications Queue File Initialize JCL
REORGDB	Re-Org Utility
VPTUTIPL	Sterling Gentran:Viewpoint Tutorial Inbound
VPTUTOPL	Sterling Gentran:Viewpoint Tutorial Outbound

## **Sterling Gentran:Viewpoint Tracking Management JCL**

The JCL members for the Sterling Gentran:ViewpointTracking Management module are:

<b>Member Name</b>	<b>Description</b>
TMTUTIN	Tracking Management Inbound Tutorial
TMTUTOUT	Tracking Management Outbound Tutorial
<b>The following JCL members are for Sterling Gentran:Plus users only:</b>	
TMTUTIPL	Tracking Management Inbound Tutorial
TMTUTOPL	Tracking Management Outbound Tutorial

## Sample Programs

The following sample programs are located in the UTILITY.SOURCE library:

Name	Description
EDIVACT	Sterling Gentran:Viewpoint Action – Exit Interface Layout
EDIVBACT	Sample Batch Action Exit
EDIVEXIT	Sample Error User Exit
EDIVLX	Sterling Connect Log Exit
EDIVLXU	Sterling Connect Log Exit with User Log Exit Call
EDIVOACT	Sample Online Action Exit
EDIVPLT	Automatic Sterling Gentran:Viewpoint System Start-Up
<b>Tracking Management only</b>	
EDIVTMUX	Sample Tracking User Exit
LSN300	Batch User Gateway Linkage Section
LSX970	Online User Gateway Linkage Section
VPIBAPPL	Sample Inbound User Application Program
VPIBCOMM	Sample Inbound Communications Program
VPOBAPPL	Sample Outbound User Application Program
VPOBCOMM	Sample Outbound Communications Program

---



# Notices

This information was developed for products and services offered in the U.S.A.

IBM may not offer the products, services, or features discussed in this document in other countries. Consult your local IBM representative for information on the products and services currently available in your area. Any reference to an IBM product, program, or service is not intended to state or imply that only that IBM product, program, or service may be used. Any functionally equivalent product, program, or service that does not infringe any IBM intellectual property right may be used instead. However, it is the user's responsibility to evaluate and verify the operation of any non-IBM product, program, or service.

IBM may have patents or pending patent applications covering subject matter described in this document. The furnishing of this document does not grant you any license to these patents. You can send license inquiries, in writing, to:

IBM Director of Licensing

IBM Corporation

North Castle Drive

Armonk, NY 10504-1785

U.S.A.

For license inquiries regarding double-byte character set (DBCS) information, contact the IBM Intellectual

Property Department in your country or send inquiries, in writing, to:

Intellectual Property Licensing

Legal and Intellectual Property Law

IBM Japan Ltd.

1623-14, Shimotsuruma, Yamato-shi

Kanagawa 242-8502 Japan

**The following paragraph does not apply to the United Kingdom or any other country where such provisions are inconsistent with local law:** INTERNATIONAL BUSINESS MACHINES CORPORATION PROVIDES THIS PUBLICATION "AS IS" WITHOUT WARRANTY OF ANY KIND, EITHER EXPRESS OR IMPLIED, INCLUDING, BUT NOT LIMITED TO, THE IMPLIED WARRANTIES OF NON-INFRINGEMENT, MERCHANTABILITY OR FITNESS

---

FOR A PARTICULAR PURPOSE. Some states do not allow disclaimer of express or implied warranties in certain transactions, therefore, this statement may not apply to you.

This information could include technical inaccuracies or typographical errors. Changes are periodically made to the information herein; these changes will be incorporated in new editions of the publication. IBM may make improvements and/or changes in the product(s) and/or the program(s) described in this publication at any time without notice.

Any references in this information to non-IBM Web sites are provided for convenience only and do not in any manner serve as an endorsement of those Web sites. The materials at those Web sites are not part of the materials for this IBM product and use of those Web sites is at your own risk.

IBM may use or distribute any of the information you supply in any way it believes appropriate without incurring any obligation to you.

Licensees of this program who wish to have information about it for the purpose of enabling: (i) the exchange of information between independently created programs and other programs (including this one) and (ii) the mutual use of the information which has been exchanged, should contact:

IBM Corporation

J46A/G4

555 Bailey Avenue

San Jose, CA\_\_95141-1003

U.S.A.

Such information may be available, subject to appropriate terms and conditions, including in some cases, payment of a fee.

The licensed program described in this document and all licensed material available for it are provided by IBM under terms of the IBM Customer Agreement, IBM International Program License Agreement or any equivalent agreement between us.

Any performance data contained herein was determined in a controlled environment. Therefore, the results obtained in other operating environments may vary significantly. Some measurements may have been made on development-level systems and there is no guarantee that these measurements will be the same on generally available systems. Furthermore, some measurements may have been estimated through extrapolation. Actual results may vary. Users of this document should verify the applicable data for their specific environment.

Information concerning non-IBM products was obtained from the suppliers of those products, their published announcements or other publicly available sources. IBM has not tested those products and cannot confirm the accuracy of performance, compatibility or any other claims related to non-IBM products. Questions on the capabilities of non-IBM products should be addressed to the suppliers of those products.

All statements regarding IBM's future direction or intent are subject to change or withdrawal without notice, and represent goals and objectives only.

---

This information is for planning purposes only. The information herein is subject to change before the products described become available. This information contains examples of data and reports used in daily business operations. To illustrate them as completely as possible, the examples include the names of individuals, companies, brands, and products. All of these names are fictitious and any similarity to the names and addresses used by an actual business enterprise is entirely coincidental.

#### COPYRIGHT LICENSE:

This information contains sample application programs in source language, which illustrate programming techniques on various operating platforms. You may copy, modify, and distribute these sample programs in any form without payment to IBM, for the purposes of developing, using, marketing or distributing application programs conforming to the application programming interface for the operating platform for which the sample programs are written. These examples have not been thoroughly tested under all conditions. IBM, therefore, cannot guarantee or imply reliability, serviceability, or function of these programs. The sample programs are provided "AS IS", without warranty of any kind. IBM shall not be liable for any damages arising out of your use of the sample programs.

Each copy or any portion of these sample programs or any derivative work, must include a copyright notice as follows:

© IBM 2011. Portions of this code are derived from IBM Corp. Sample Programs.  
© Copyright IBM Corp. 2011.

If you are viewing this information softcopy, the photographs and color illustrations may not appear.

## Trademarks

IBM, the IBM logo, and ibm.com are trademarks or registered trademarks of International Business Machines Corp., registered in many jurisdictions worldwide. Other product and service names might be trademarks of IBM or other companies. A current list of IBM trademarks is available on the Web at "[Copyright and trademark information](http://www.ibm.com/legal/copytrade.shtml)" at [www.ibm.com/legal/copytrade.shtml](http://www.ibm.com/legal/copytrade.shtml).

Adobe, the Adobe logo, PostScript, and the PostScript logo are either registered trademarks or trademarks of Adobe Systems Incorporated in the United States, and/or other countries.

IT Infrastructure Library is a registered trademark of the Central Computer and Telecommunications Agency which is now part of the Office of Government Commerce.

Intel, Intel logo, Intel Inside, Intel Inside logo, Intel Centrino, Intel Centrino logo, Celeron, Intel Xeon, Intel SpeedStep, Itanium, and Pentium are trademarks or registered trademarks of Intel Corporation or its subsidiaries in the United States and other countries.

Linux is a registered trademark of Linus Torvalds in the United States, other countries, or both.

Microsoft, Windows, Windows NT, and the Windows logo are trademarks of Microsoft Corporation in the United States, other countries, or both.

---

ITIL is a registered trademark, and a registered community trademark of the Office of Government Commerce, and is registered in the U.S. Patent and Trademark Office.

UNIX is a registered trademark of The Open Group in the United States and other countries.

Java and all Java-based trademarks and logos are trademarks or registered trademarks of Oracle and/or its affiliates.

Cell Broadband Engine is a trademark of Sony Computer Entertainment, Inc. in the United States, other countries, or both and is used under license therefrom.

Linear Tape-Open, LTO, the LTO Logo, Ultrium and the Ultrium Logo are trademarks of HP, IBM Corp. and Quantum in the U.S. and other countries.

Connect Control Center®, Connect:Direct®, Connect:Enterprise, Gentran®, Gentran:Basic®, Gentran:Control®, Gentran:Director®, Gentran:Plus®, Gentran:Realtime®, Gentran:Server®, Gentran:Viewpoint®, Sterling Commerce™, Sterling Information Broker®, and Sterling Integrator® are trademarks or registered trademarks of Sterling Commerce, Inc., an IBM Company.

Other company, product, and service names may be trademarks or service marks of others.

# Glossary

## Definition

A set of options the user may create, save, and reuse. Definitions allow a user to easily and selectively build their Extended EDI System and Profiles from a wide range of criteria.

The following types of definitions can be created:

- Tracking Point
- Maintenance/Inquiry Options
- Exception Profile
- Exception Capture
- Exception Action
- User Message
- User Procedure

## Error User Exit

A user program that is initiated by Sterling Gentran:Viewpoint in a fatal system condition.

## Exception

An event or combination of events which has resulted from a process for which a user wants some action to be performed. An exception is not restricted to an error condition. For example, a simple exception could be, a purchase order has just been received from partner XYZ.

## Exception Capture Definition

The set of options defined by a user, used by Sterling Gentran:Viewpoint in an Exception Profile for capturing exceptions being processed by tracking points.

## Exception Action Definition

The set of options defined by a user, used by Sterling Gentran:Viewpoint in an Exception Profile for initiating user automated systems for responding to captured exceptions.

## Exception Inquiry

A functional area which provides the online functions for managing and resolving exceptions that have been captured.

---

## Exception Management

An option from the Sterling Gentran:Viewpoint Main Menu which provides the online functions for defining definitions, profiles, user messages and user procedures.

### Exception Profile

A profile that combines a capture definition, a recipient, and optionally a user message, a user procedure and an exception action. The exception profile is used by Sterling Gentran:Viewpoint to automate the handling of an exception for the user.

### Extended Search Conditions

For queries that cannot be performed using the basic query criteria, this feature allows a user to extend the search condition up to a 7 expression condition with full boolean logic and AND/OR connectors.

### Extended System Management

An option from the Sterling Gentran:Viewpoint Main Menu which provides the online functions needed to define and administer the Extended EDI System.

### Find Limit

A 1- to 6-digit number set by the user on the Configuration File Sterling Gentran:Viewpoint record. This number will limit the number of items the search function will find that satisfy the search criteria before terminating the search.

### Gateway

An Application Program Interface (API) that provides Tracking Points access to Sterling Gentran:Viewpoint.

### Item

Term used by Sterling Gentran:Viewpoint to refer to a logical grouping of data and information.

The item types currently recognized by Sterling Gentran:Viewpoint are:

- Application Document
- Batch (Sterling Gentran:Plus only)
- Interchange
- Functional Group
- Run
- Transaction Set
- U:[type] (Tracking Management only)

### Object Selection Field

Most panels provide fields at the top of the panel for selecting the object or objects you

---

wish to work on. These fields are called Object Selection fields.

### **Process Status**

The status associated with an item which is passed from a user application to Sterling Gentran:Viewpoint Tracking Management.

### **Query ID**

The name defined for a set of search criteria which users may create, save, and reuse. The search query will find items which have been processed by Tracking Management using preset criteria. The criteria available for a basic query are Item Type, Reference, Partner, and Date/Time.

### **Recipient**

Any person or group that receives notification for an exception that has been captured by Sterling Gentran:Viewpoint.

### **Search Limit**

A 1- to 6-digit number set by the user on the Configuration File Sterling Gentran:Viewpoint record. This will limit the number of items the Query search function will evaluate before terminating the search.

### **Trace ID**

A unique number which is assigned to each item being tracked by Tracking Management. The trace ID provides a link for an item between processes and also provides a means for the user to reference the item.

### **Tracking Management**

A functional area which provides end-to-end tracking of an item travelling through the Extended EDI system.

### **Tracking Point**

A system/process which has been included in your Extended EDI System (for example, Sterling Gentran Outbound Mapper).

### **Tracking User Exit**

Allows users to pass information to their database for subsequent inquiry. This feature can be optionally invoked by Tracking Management when an item has been processed for a tracking point.

### **User Action**

A user batch procedure or online transaction that the user has defined to Sterling Gentran:Viewpoint as an Exception Action. The User Action is automatically initiated by Sterling Gentran:Viewpoint Profiles. An example of a User Action is E-Mail. The user may define, in an Exception Profile, that a person should receive an E-Mail when errors are encountered for a purchase order received.

---

## **User Field**

Any value the user passes to Sterling Gentran:Viewpoint for an item by a User tracking Point. The name or label used for the User Field 1 field is assigned by the user when they define the User Tracking Point in Extended System Management. Three User Fields may be passed for each item for each process.

## **User Tracking Point**

User system and/or processes, such as applications or communications systems, which will invoke the User Gateway to pass information to Sterling Gentran:Viewpoint. This feature is currently available for Tracking Management only.



# Index

## A

---

### Application Interfaces

Online Error User Exit 4-16

Archive File (EDIVA) 3-14

Automatic System Start-Up (EDIVPLT) 2-66

## B

---

Batch Action Processor Program (EDIN200)  
1-21

Batch Gateway (EDIN100) 1-5

### Batch Programs

Batch Action Processor (EDIN200) 1-21

Batch Gateway (EDIN100) 1-5

Communications Queue File Initialize  
(EDIN150) 1-19

Connect Log Exit (EDIVLX) 1-24

Connect Log Exit with User Log Exit Call  
(EDIVLXU) 1-25, 1-26

Maintenance/Inquiry (EDIN140) 1-12

Online JCL File Maintenance (EDIG010) 1-2

Profile Maintenance/Inquiry Subroutine  
(EDIN141) 1-16

Repository Maintenance/Inquiry Subroutine  
(EDIN142) 1-17

Staging File Initialize (EDIN130) 1-10

Sterling Gentran

Viewpoint Communications Re-Org  
(EDIN120) 1-8

STOUTL Report Processor (EDIN110) 1-6

Tracking Management Maintenance/Inquiry  
Subroutine (EDIN144) 1-18

User Batch Gateway (EDIN300) 1-23, 1-24,  
1-25

## C

---

CICS Program Descriptions 2-10

CICS Program Image 2-9

CICS Recovery Requirements 2-7

CICS Region Configuration Options 2-9

CICS Resource Requirements 2-7

Communications Post Processor (EDIX692) 2-72

Communications Queue File (EDIVCQ) 3-15

Communications Queue File Initialize  
(EDIN150) 1-19

Configuration File (EDICFG) 3-5

Connect Cross Reference File (EDICXRF) 3-9

Connect Failure Codes File (EDICFC) 3-4

Connect Log Exit (EDIVLX) 1-24

Connect Log Exit with User Log Exit Call  
(EDIVLXU) 1-25, 1-26

## E

---

### EDIAPPLT

*see* Sterling Gentran

Realtime Tutorial Application Data files

### EDIAPPLV

*see* Sterling Gentran

Realtime IVP Application Data files

### EDIDATT

*see* Sterling Gentran

Realtime Tutorial EDI Data files

### EDIDATV

*see* Sterling Gentran

Realtime IVP EDI Data files

EDIG010 - Online JCL File Maintenance 1-2

EDIN100 - Batch Gateway Program 1-5

EDIN110 - STOUTL Report Processor 1-6

EDIN120 - Sterling Gentran

Viewpoint Communications Re-Org Program 1-8

EDIN130 - Staging File Initialize Program 1-10

EDIN140 - Maintenance/Inquiry Program 1-12

EDIN141 - Profile Maintenance/Inquiry

Subroutine 1-16

EDIN142 - Repository Maintenance/Inquiry

Subroutine 1-17

## Index

---

EDIN144 - Tracking Management Maintenance/  
Inquiry Subroutine 1-18  
EDIN150 - Communications Queue File  
Initialize 1-19  
EDIN200 - Batch Action Processor Program 1-21  
EDIN300 - User Batch Gateway 1-23  
EDIVLX - Connect Log Exit 1-24  
EDIVLXU - Connect Log Exit with User Log  
Exit Call 1-25  
EDIVTOGL  
System Status Toggle Program 2-67  
EDIVWAIT - Batch Wait Utility 1-26  
Enqueue Requirements 2-7  
Envelope Reference ID 4-6  
Error User Exit 4-16  
Exception Action Definition (EDIX626) 1-21,  
2-31  
Exception Action Directory (EDIX625) 2-30  
Exception Action User Exit 1-21, 4-2  
Exception Capture Definition (EDIX624) 2-29  
Exception Capture Directory (EDIX623) 2-28  
Exception Data Display - Application (EDIX651)  
2-43  
Exception Data Display - EDI (EDIX655) 2-47  
Exception Detail (EDIX649) 2-41  
Exception History - 2 (EDIX653) 2-45  
Exception History (EDIX652) 2-44  
Exception History Update (EDIX654) 2-46  
Exception List (EDIX648) 2-40  
Exception Management Menu (EDIX620) 2-25  
Exception Message List (EDIX650) 2-42  
Exception Profile 4-7  
Exception Profile Definition (EDIX622) 2-27  
Exception Profile Directory (EDIX621) 2-26  
Exit Version 4-7  
Extended Search Condition (EDIX703) 2-56  
Extended System Management Menu (EDIX601)  
2-14

## F

---

### file

Sterling Gentran  
Realtime Application Data file (EDIAPPLV)  
3-3, 3-10  
Realtime IVP EDI Data file (EDIDATV)  
3-11  
Realtime Tutorial Application Data file  
(EDIAPPLT) 3-2

File Descriptions 3-5  
File Resource Definitions 2-7  
File Sharing Between Batch and CICS 2-5  
Functional Area Control (EDIX607) 2-20

## G

---

### Gateway

Batch Gateway Program (EDIN100) 1-5

## I

---

Interchange Detail (EDIX402) 2-64  
Interchange Line Detail (EDIX403) 2-65  
Item Data Display - Application (EDIX716) 2-61  
Item Data Display - EDI (EDIX717) 2-62  
Item Exception Status (EDIX718) 2-63  
Item Message List (EDIX715) 2-60  
Item Process Detail (EDIX712) 2-59  
Item Reference History (EDIX711) 2-58  
Item Status History (EDIX710) 2-57  
Item Type 4-7

## J

---

JCL File (EDIJCL) 3-12  
Job Submission Processor (EDIX960) 2-74

## M

---

Maintenance/Inquiry Options Definition  
(EDIX609) 2-22  
Maintenance/Inquiry Options Directory  
(EDIX608) 2-21  
Maintenance/Inquiry Program (EDIN140) 1-12  
Master Index File (EDIVM) 3-16  
Multiple System Images 2-9

## O

---

Offline Utility Cross Reference File  
(EDIVOUXR) 3-19  
Offline Utility Report File (EDIVOURT) 3-18  
Online Error User Exit 4-16

Online Gateway (EDIX980) 2-76  
 Online JCL File Maintenance (EDIG010) 1-2  
 Online Trace ID File (EDIVTO) 3-30  
 Online User Gateway (EDIX970) 2-75

---

## P

PLT Automatic Start-Up 2-9  
 Profile File (EDIVP) 3-20  
 Profile Maintenance/Inquiry Subroutine  
 (EDIN141) 1-16  
 Program and Mapset Resource Definitions 2-8  
 Program Image Feature 2-9  
 Program List Table (PLT) Entries 2-8  
 Prompt File (EDIPRMP) 3-13  
 Prompt Processor (EDIX950) 2-73

---

## Q

Query Directory (EDIX701) 2-54  
 Query Request (EDIX702) 2-55

---

## R

Recipient 4-8  
 Recipient Detail (EDIX647) 2-39  
 Recipient Directory (EDIX646) 2-38  
 Remote ID Control (EDIX606) 2-19  
 Repository File (EDIVR) 3-24  
 Repository Maintenance/Inquiry Subroutine  
 (EDIN142) 1-17

---

## S

Staging File (EDIVSF) 3-26  
 Staging File Initialize (EDIN130) 1-10  
 Staging Temporary Storage Queue Directory  
 (EDIX686) 2-51  
 Staging Temporary Storage Queues (EDIVnnnn)  
 3-28  
 Status Control (EDIX605) 2-18  
 Sterling GENTRAN  
   Realtime Tutorial EDI Data file (EDIAPPLV)  
   3-10  
 Sterling Gentran

Realtime IVP EDI Data file (EDIDATV) 3-11  
 Realtime Tutorial Application Data file  
 (EDIAPPLT) 3-2  
 Realtime Tutorial Application Data file  
 (EDIAPPLV) 3-3  
 Viewpoint BMS Maps 2-77  
 Viewpoint Communications Re-Org (EDIN120)  
 1-8  
 Viewpoint Main Menu (EDIX600) 2-13  
 Viewpoint OnLine Log Display (EDIX688) 2-52  
 Viewpoint Post Processor (EDIX691) 2-71  
 Viewpoint Scanner (EDIX690) 2-69  
 STERLING Tracking Point Definition  
 (EDIX603) 2-16  
 STERLING Tracking Point Directory  
 (EDIX602) 2-15  
 Sterling Tracking Point Directory (EDIX602)  
 2-15  
 STOUTL Report Processor (EDIN110) 1-6  
 System Message Control (EDIX604) 2-17  
 System Options - Error User Exit 4-16  
 System Options (EDIX685) 2-50  
 System Status Toggle Program (EDIVTOGL)  
 2-67

---

## T

Technical Architecture 2-2  
 Temporary Storage Requirements 2-6  
 Trace ID 4-21, 4-24, 4-31  
 Trace ID Cross Reference File (EDIVPPX) 3-23  
 Trace ID File (EDIVT) 3-4, 3-29  
 Tracking Management Maintenance/Inquiry  
 Subroutine (EDIN144) 1-18  
 Tracking Management Menu (EDIX700) 2-53  
 Tracking User Exit 4-40  
 Transaction Resource Definitions 2-8

---

## U

Usage Cross Reference (EDIX631) 2-36  
 User Action 1-21  
 User Batch Gateway (EDIN300) 1-23, 1-24,  
 1-25, 4-36  
 User Exits  
   Exception Action User Exit 1-21, 4-2  
   System Options - Error User Exit 4-16  
 User Gateway 4-17

## Index

---

User Message 4-10  
User Message Definition (EDIX628) 2-33  
User Message Directory (EDIX627) 2-32  
User Message Display (EDIX662) 2-48  
User Online Gateway (EDIX970) 4-38  
User Procedure 4-10  
User Procedure Definition (EDIX630) 2-35  
User Procedure Directory (EDIX629) 2-34  
User Procedure Display (EDIX663) 2-49  
User Tracking Point 4-21  
User Tracking Point Definition (EDIX611) 2-24  
User Tracking Point Directory (EDIX610) 2-23  
User Tracking Record 4-22