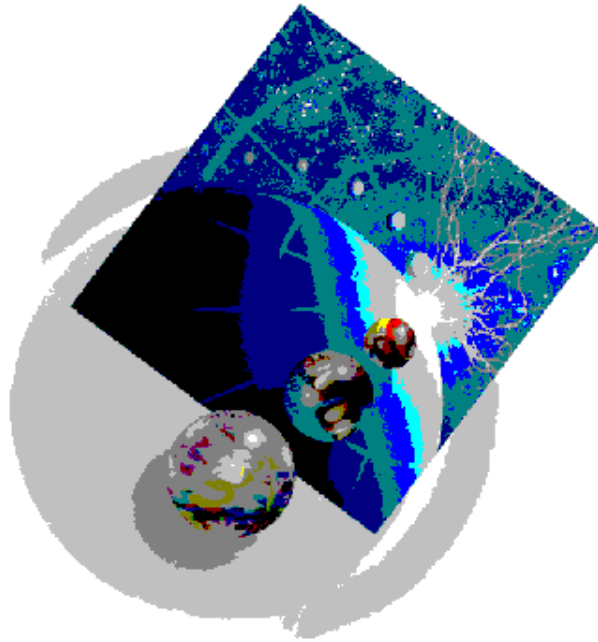


Verifying an Instance of WebSphere Application Server – Express for iSeries

3/1/2003



Verifying an Instance of WebSphere Application Server – Express for iSeries

The purpose of this exercise is to verify that the creation of the combined WebSphere Application Server and HTTP Server Powered by Apache instances that were completed in that last lab was performed correctly.

This Lab has following steps:

- 1. Start your WebSphere Application Server – Express for iSeries instance***
- 2. Test your WebSphere Application Server – Express for iSeries instance via the WAS Express Internal HTTP Server***
- 3. Start your external HTTP Server Powered by Apache***
- 4. Test your combined WAS Express and HTTP Server environment***

Verifying an Instance of WebSphere Application Server – Express for iSeries

1. Start your WebSphere Application Server – Express for iSeries instance

__ 1. **Open up a web browser** session on your workstation. Go to the following URL:

http://server:2001 (where server is the iSeries host or TCP/IP address)

__ 2. **Supply your iSeries UserID and Password** when prompted

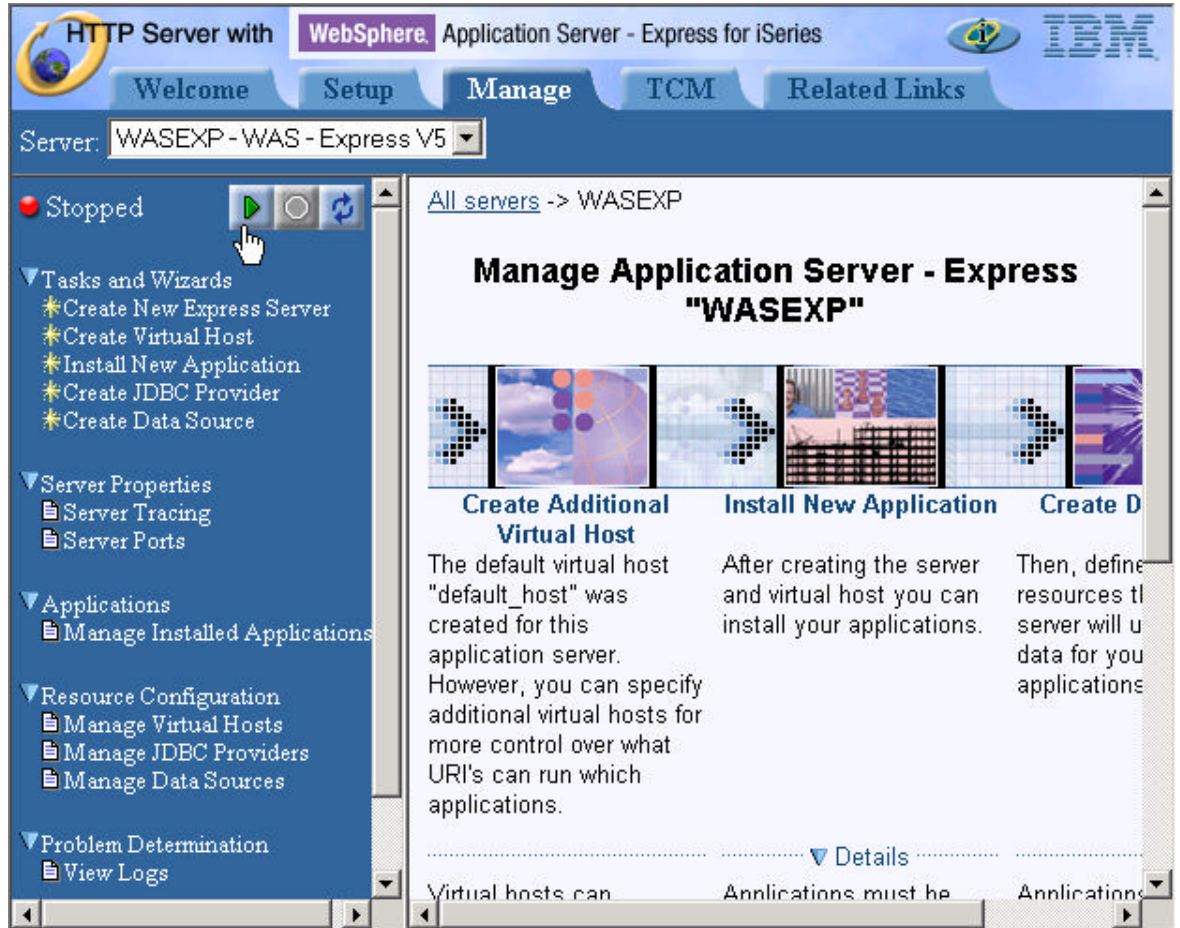
__ 3. You should be at the iSeries Tasks web page, as shown in the next diagram.



__ 4. **Click on the IBM WebSphere Application Server – Express for iSeries link.**

Verifying an Instance of WebSphere Application Server – Express for iSeries

- __ 5. **Select the Manage tab**
- __ 6. **Select your WebSphere Express Instance** from the list of available servers
- __ 7. **If your server is stopped, click on the Start Server icon** (Green Triangle) to start it. Occasionally **Press the refresh** button, until your server starts.



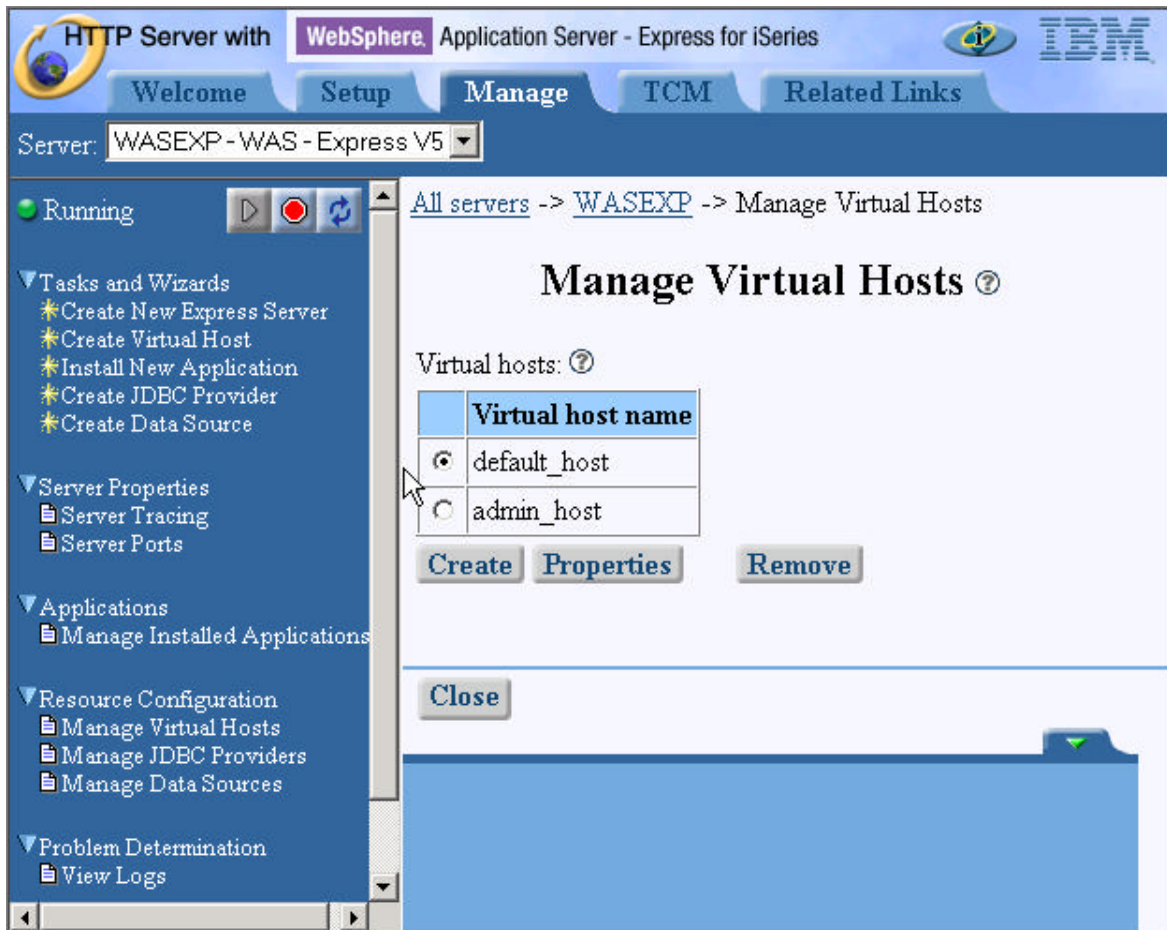
Verifying an Instance of WebSphere Application Server – Express for iSeries

2. Test your WebSphere Application Server – Express for iSeries instance via the WAS Express Internal HTTP Server

__ 1. With your WAS Express instance up and running, it is now time to test one of the sample applications that was installed during the creation process. The first test will be performed using the internal HTTP Server, which is included as a part of each WebSphere Application Server instance.

You will perform this task in two steps. First, you will need to know the internal HTTP server port that your Express instance is using. Second, you will then use this to try running the test snoop servlet.

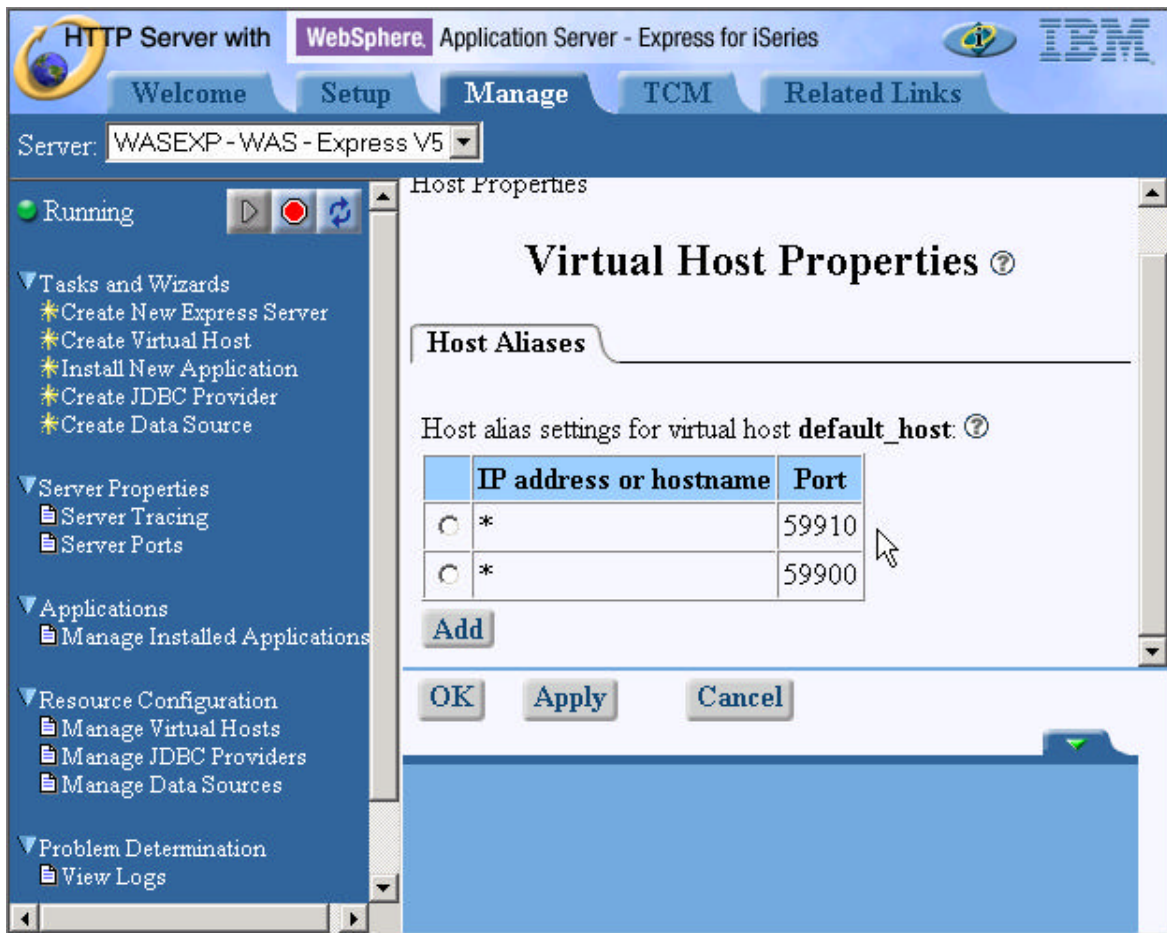
At the Express configuration console, **click** the **Manage Virtual Hosts** option under the Resource Configuration category



__ 2. You should see two entries - default_host and admin_host. **Select** the **default_host** radio button option, then **click** the **Properties** button.

Verifying an Instance of WebSphere Application Server – Express for iSeries

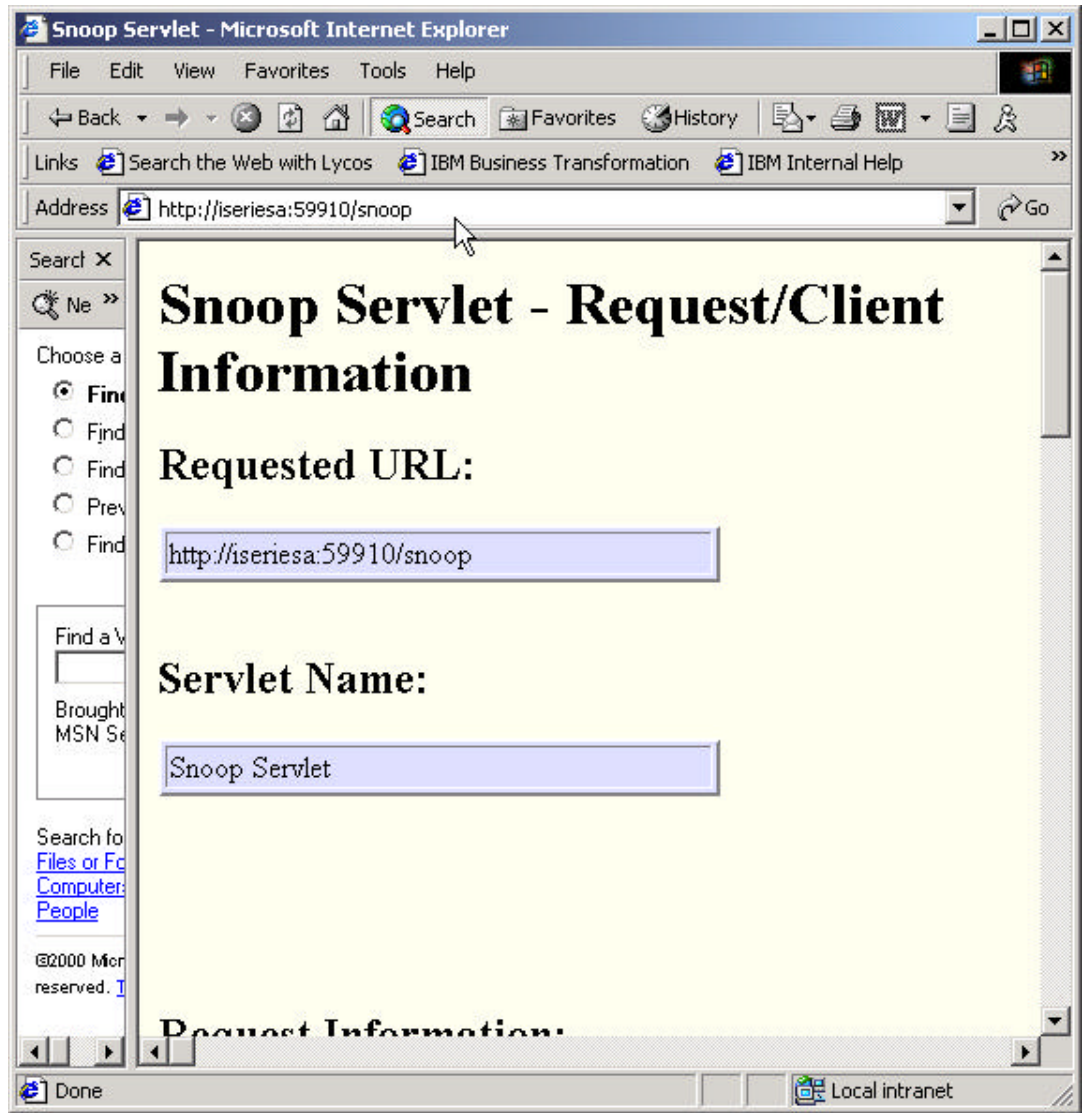
- 3. You should now see two virtual host ports defined (i.e. 5xx00 and 5xx10). The port ending in 00 is for your Apache HTTP server. The port ending in 10 is your WAS Express internal HTTP server port.



- 4. **Open up another web browser session** on your workstation (keep the current console session active). **Go to the following URL** to test your application server instance: **http://<system_name>:59910/snoop** (Where <system_name> is the iSeries hostname or TCP/IP address, and 59910 is the WAS internal HTTP server port you saw in the previous task)

Verifying an Instance of WebSphere Application Server – Express for iSeries

- 5. If all goes well, you should see the results of the 'snoop' servlet, indicating that your WAS Express instance is setup and operating correctly.



Verifying an Instance of WebSphere Application Server – Express for iSeries

3. Start your external HTTP Server Powered by Apache

- __ 1. Go to the HTTP Administration Browser Window, and select your HTTP server instance (i.e. **WEBSERVER**) from the server drop down list.
- __ 2. **If your server is not running, start it. If it is already running, restart it.**

Note: You need to restart the HTTP server in order for the WAS Express plugin code to be activated.



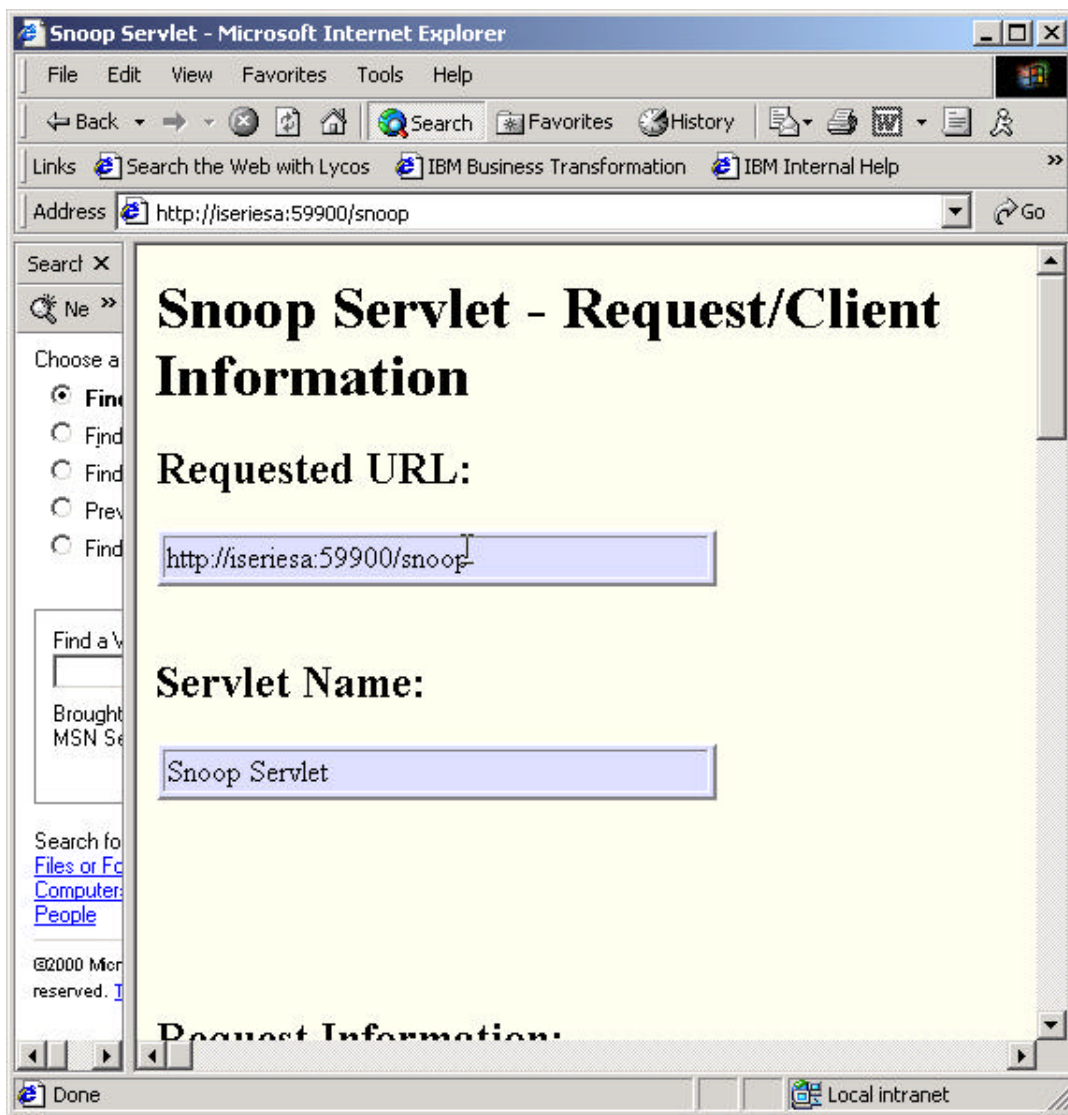
Verifying an Instance of WebSphere Application Server – Express for iSeries

4. Test your combined WAS Express and HTTP Server environment

In this step you will test your Express instance using the external Apache HTTP server you created earlier. This will determine if the linkage between your Apache HTTP server and WAS Express application server instances is setup and operating correctly. You can **use the same web browser session** used in the previous testing step.

- ___ 1. Go to the following URL to test your application server instance:
http://<system_name>:59900/snoop (Where **<system_name>** is the iSeries hostname or TCP/IP address and 59900 is the External HTTP server port)

- ___ 2. If all goes well, you should see the results of the 'snoop' servlet, indicating that your WAS Express instance is setup and operating correctly.



This concludes the lab