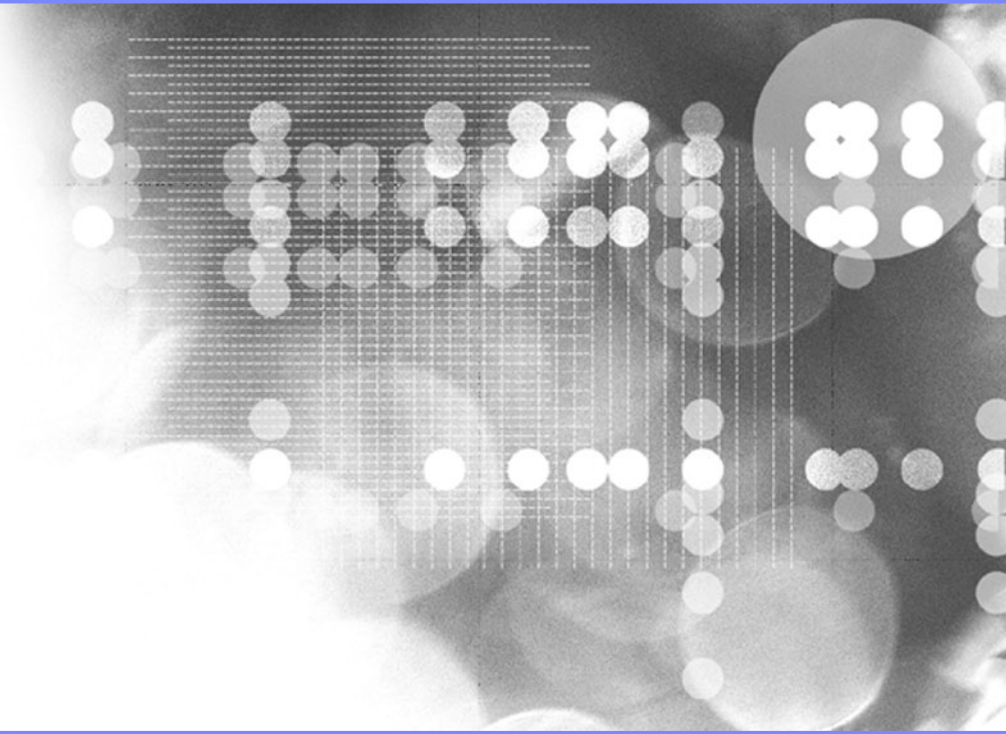




Retail Store Solutions

RMA Agents

Christopher Arrington

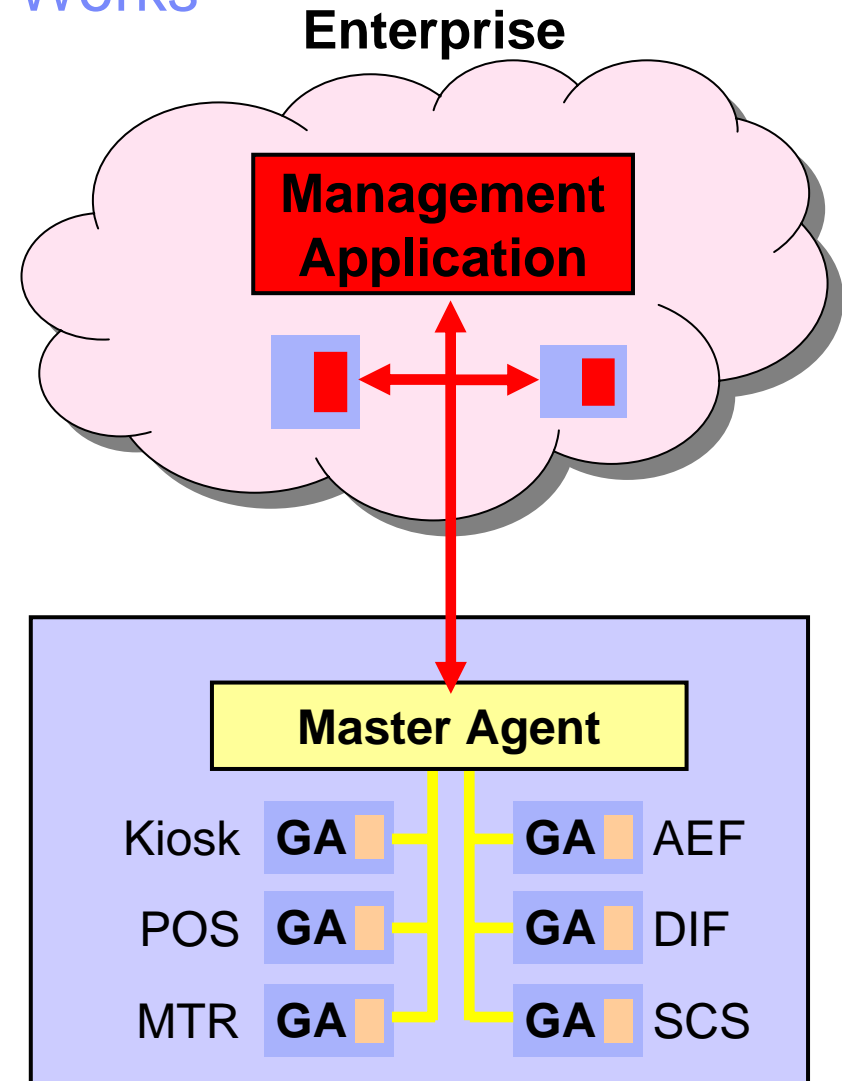


Topics

- Master Agent/ General Agent
- CIM
- JMX Monitor Policies
- File Transfer
- Events
- Diagnostic Data Capture
- Software Distribution
- Installation/Configuration
- Hardware/Software Requirements

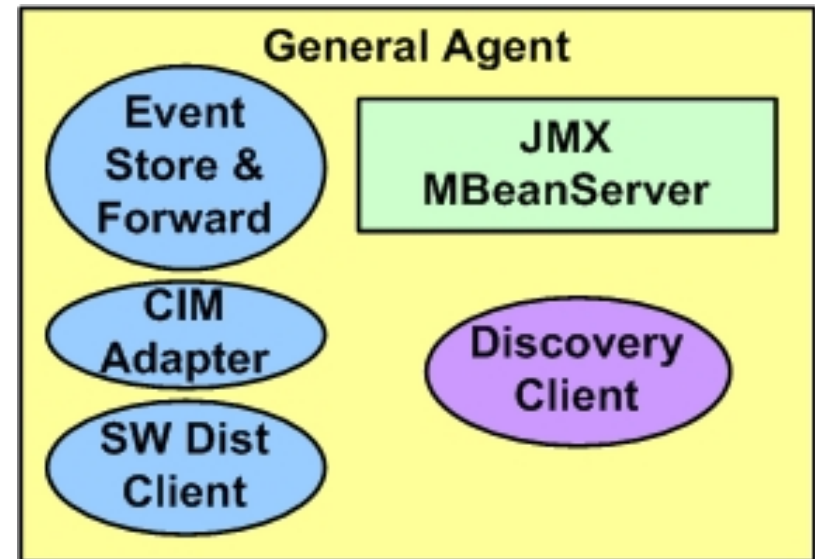
How Remote Management Agent Works

- Uses JMX (Java Management Extensions)
- MBeans (resources) registered with an MBeanServer on each agent
- General and Master Agents provide access to managed resources
- Master Agent isolates Management Application from Store
- Master Agent manages store-wide policies
- Management Applications access instrumentation for all store devices via the Master Agent



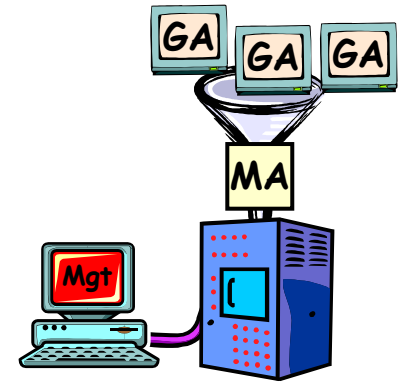
General Agent

- Runs on all store devices
- Exposes manageable attributes
- Issues notifications
- Default MBeans
 - Client Discovery and JVM Health
 - Logging Configuration
 - Event Forwarding
 - CIM
 - File Transfer
 - Software Distribution

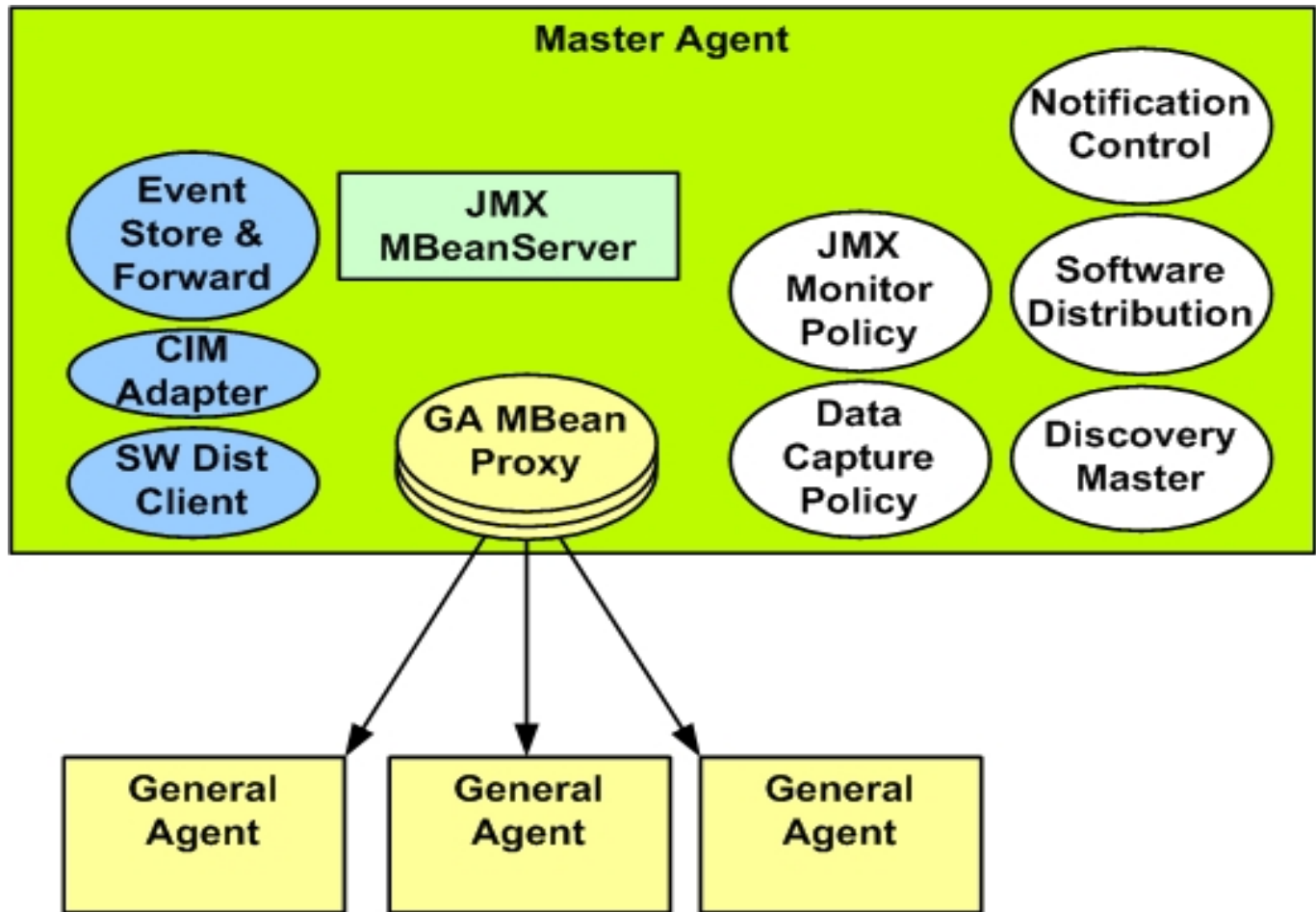


Master Agent

- Same GA core + additional MBeans
- Single point of access to store
- GA instrumentation exposed as MBean proxies
- Collects and re-emits GA events
- Point to implement and control store policy
 - Software Distribution Policy
 - JMX Monitor Policy
 - Data Capture Policy



Master Agent



SSL Support for RMI

- RMI used for remote JMX communication
 - Between MA and GA
 - Between Management Apps and MA
- RMI Sockets can be SSL or Non-SSL (Controlled by GA)
- Same as that used by Store Integrator
- Configuration in `SI_HOME/user/rma/classes/ssl.properties`



RMI SSL Configuration

- Predefined aliases:
 - SSL (Use SSL)
 - NOSSL (Don't use SSL)
- Connection from MA to GA controlled by alias "RMA"
- Example: `RMA.alias = SSL|NOSSL`
- Connection from Management Apps to MA controlled by alias "RMAMA"
- Configuration for aliases on both ends must be compatible or else there will be connection errors

SSL Connection Matrix

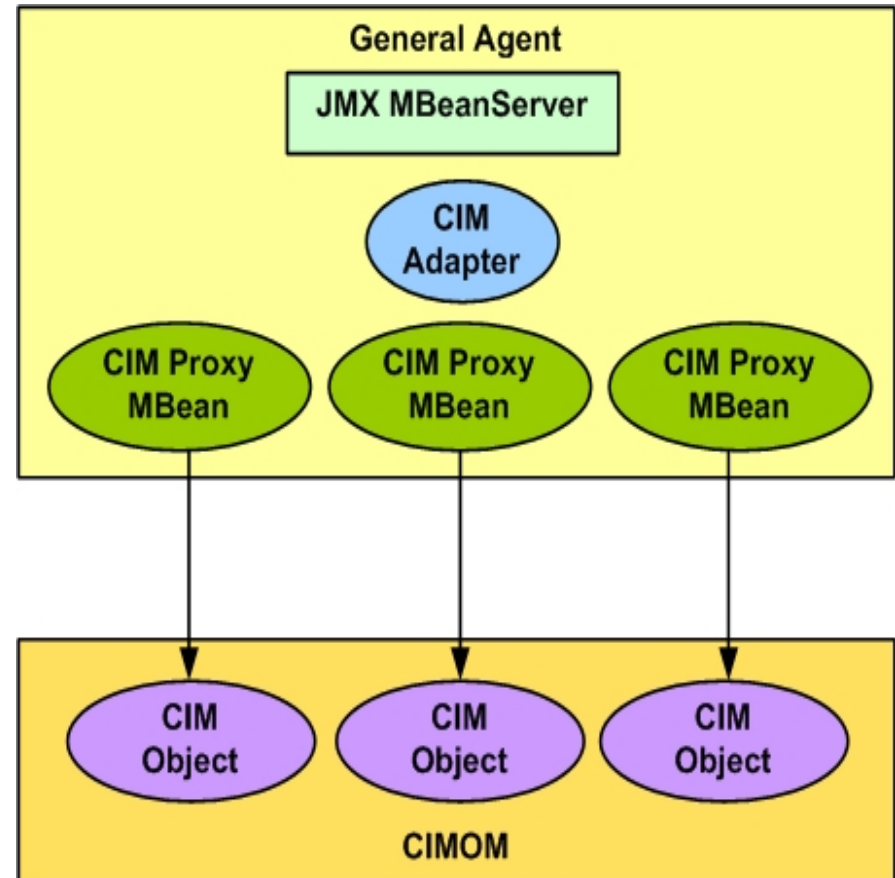
	<u>MA:</u> <u>RMA.alias=SSL</u>	<u>MA</u> <u>RMA.alias=NOSSL</u>
<u>SSL GA</u>	Connect	Cannot Connect
<u>NON-SSL GA</u>	Connect	Connect

CIM (Common Information Model)

- Common definition (Schema) of the elements comprising a system (Memory, Process, Disk, etc)
- Describes management information
 - Device characteristics (Physical)
 - Application Characteristics (Logical)
- Instances on a system are registered with a CIM Object Manager (CIMOM)
- Example implementations: WMI, Pegasus

CIMAdapterMBean

- Creates proxy MBeans to local CIM Objects
- Helps to surface SMBios information
- Currently supported CIMOM's: WMI (Windows), Pegasus (IRES)
- Proxies are created for instances based on a filter



Monitor Policies

- JMX Provides Monitoring functionality via MonitorMBeans:
 - StringMonitor (Matching of String attribute values)
 - CounterMonitor (Numerical values that increase monotonically)
 - GaugeMonitor (Numerical values based on high/low thresholds)
- Emits MonitorNotifications when condition is met (Re-emitted as a RtlMonitorNotification by the Master Agent)
- Master Agent's MonitorPolicyManager automates the creation of these MBeans
- Ability to create monitor policies based on arbitrary MBean query strings and/or MBean Class
 - Can monitor based on CIM Class
- Can be created programatically or in IBM Director JMX Browser

File Transfer MBean

- MBean instantiated on each agent to allow it to act as a FTP or FTPS client
- Used by:
 - Software Distribution
 - Data Capture

FTPS Support

- Server's certificate and certifier certificate must be in each client's keystore
- Supports Explicit FTPS (RFC 4217)
- Use keytool (included in JRE) to manage certificates:

```
keytool -import -file cacert.pem -keystore rssstore
```

Event Store and Forwarding

- Each agent stores Notifications (events) until a receiver connects
 - GA to MA
 - MA to Director
- Time and size thresholds persist events

RMA Events



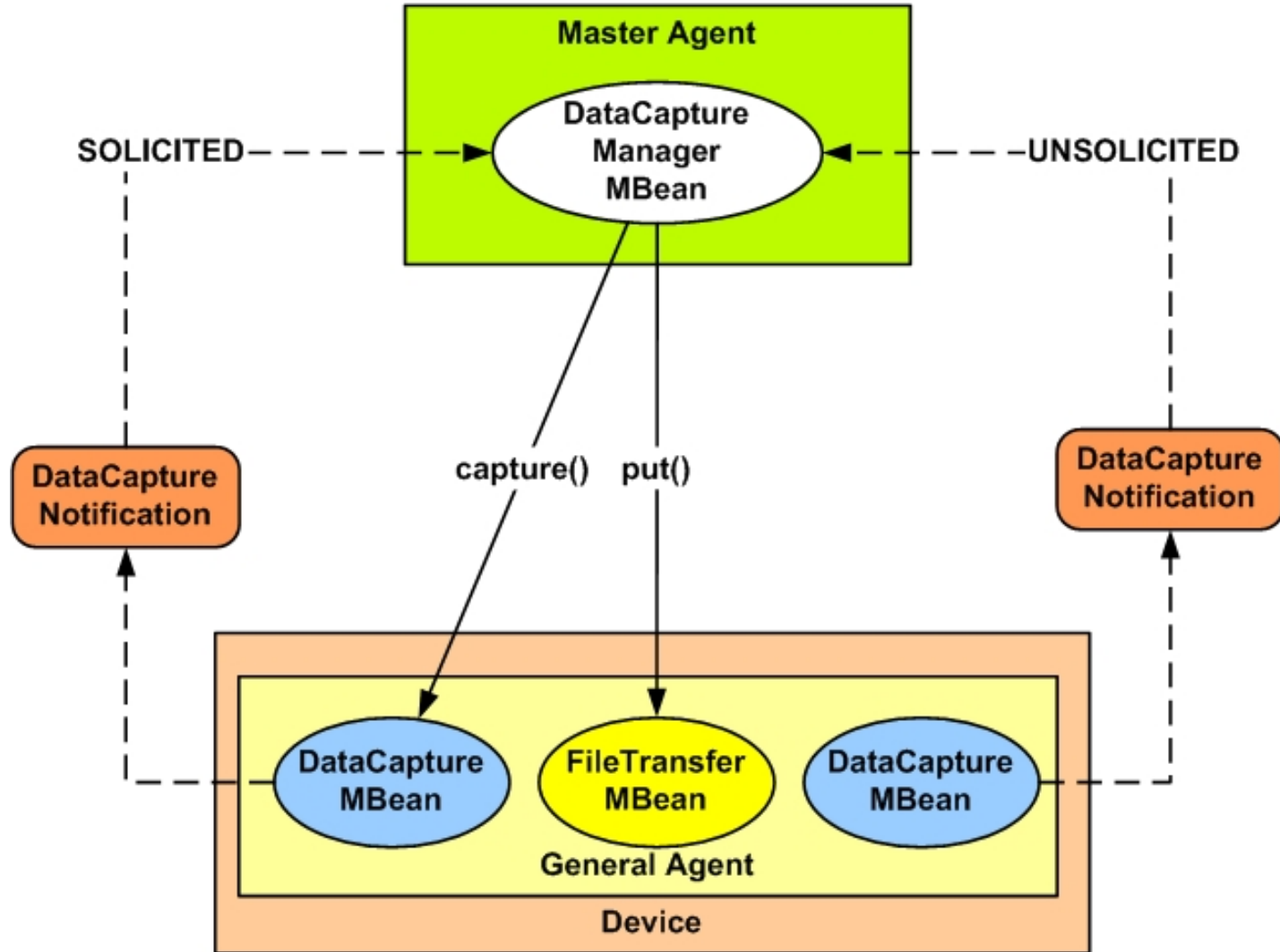
Data Capture Client

- New MBean interface for performing data captures (DataCaptureMBean), with default implementation (DataCaptureMBeanSupport)
- Special Notification class for signalling capture completion (DataCaptureNotification)
- Capture Types or unsolicited
 - Unsolicited: System detects an error and captures
 - Solicited: Invoked on the component directly
- RMA Implementation puts all RMA log files into a single jar

Data Capture Policy Management

- Used to transfer capture files from clients to a central location
- Optionally invokes captures on other components in response to an unsolicited capture

Data Capture Policy



RMA Software Distribution

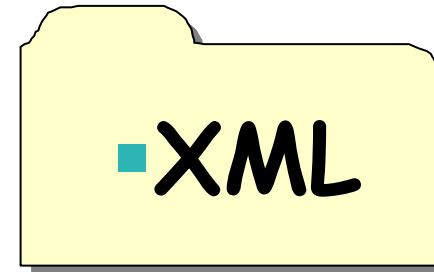
- Policy based, Master Agent triggers client(s) to retrieve and apply (install/uninstall) packages
- Packages are comprised of files and a list of instructions

Software Policy

- Set of information that RMA uses to install software on a set of clients
- Information includes:
 - Selection criteria for applying the policy, can be one of:
 - List of devices to apply to
 - Combination of platform type and/or app roles
 - Target directory on client (Location of downloaded files)
 - FTP Information
 - Policy XML File Name
 - Scheduling information
 - Error recovery options (For certain recoverable errors)
 - Target System State (Optional)
 - Throttling options (Optional)

Software Policy XML File

- Represents a package that gets deployed to clients in the store
- Information about resources files (**package files**)
- Install/Uninstall Instructions
- Client executes only platform-specific info
- Retrieved from FTP server



Policy XML File Example

```
<SoftwarePolicy:SoftwarePolicy xmlns:xsi=http://www.w3.org/2001/XMLSchema-instance
  xsi:schemaLocation="http://www.pc.ibm.com/ibm/si/mgmt
/com/ibm/retail/si/mgmt/swdist/SWPolicyXMLSchema.xsd"
  xmlns:SoftwarePolicy="http://www.pc.ibm.com/ibm/si/mgmt">

  <SoftwarePolicy:SWPolicyDescriptor>
    <SoftwarePolicy:Description>MyApp</SoftwarePolicy:Description>
  </SoftwarePolicy:SWPolicyDescriptor>

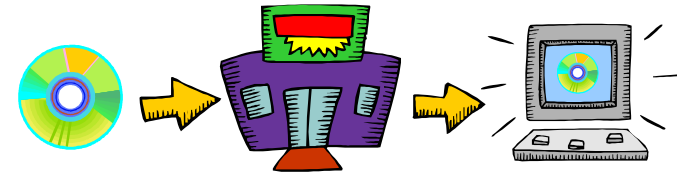
  <SoftwarePolicy:SWPolicyTarget targetOS="Windows">
    <SoftwarePolicy:SWPolicyResourceFiles>
      <SoftwarePolicy:Component filename="setup.exe" size="1223121"/>
      <SoftwarePolicy:Component filename="response.txt" size="1112"/>
    </SoftwarePolicy:SWPolicyResourceFiles>

    <SoftwarePolicy:Installation>
      <SoftwarePolicy:Exec executable="{client.target.path}\setup.exe" expectedRC="0"/>
      <SoftwarePolicy:Exec executable="mkdir /TEST1" expectedRC="0"/>
    </SoftwarePolicy:Installation>

    <SoftwarePolicy:DeInstallation>
      <SoftwarePolicy:Exec executable="{env.APPHOME}\uninst.exe" expectedRC="0">
        <SoftwarePolicy:ExecArg value="-removeAll"/>
      </SoftwarePolicy:Exec>
    </SoftwarePolicy:DeInstallation>

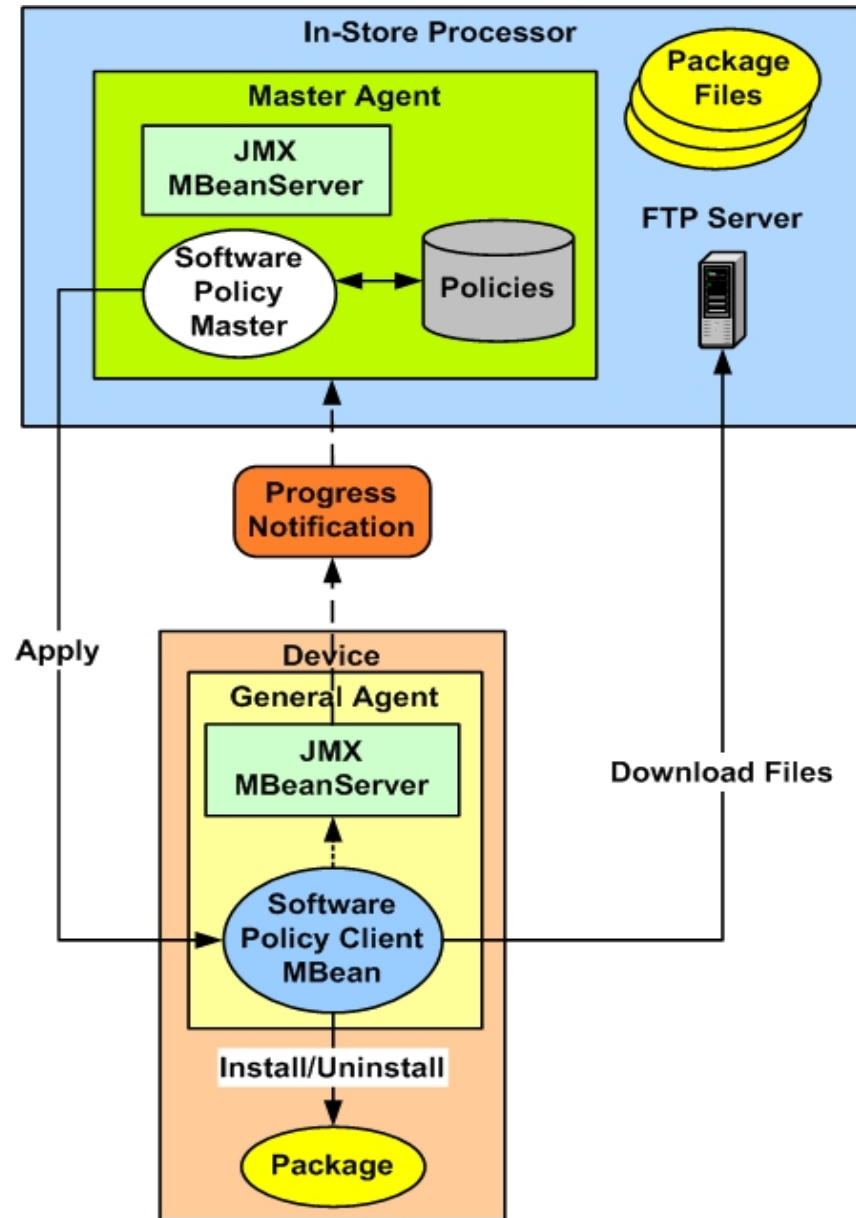
  </SoftwarePolicy:SWPolicyTarget>
</SoftwarePolicy:SoftwarePolicy>
```

Software Policy MBeans



- **Software Policy Master MBean**
Manages and schedules Software Policies over a POS device network
- **Software Policy Registry MBean**
Maintains registry of policies specifying resources and actions to distribute software
- **Software Policy History MBean**
Maintains history of active and completed policies
- **Software Policy Client MBean**
Executes software policies, issues state notifications

RMA Software Distribution



Software Policy Client MBean

- Runs on each client device
- Expects requests to execute policies
 - Retrieves and parses policy XML file
 - Retrieves resource files
 - Performs software distribution steps
 - Persists Policy State (for reboot)
 - Sends progress notifications
 - Sends completion notifications



SWD Changes in V2

- Master Agent interfaces changed, but client (GA) interfaces unchanged
 - V2 MA can deploy packages to V1 clients
 - STDOUT and STDERR from logged at INFO level in RMA Logs

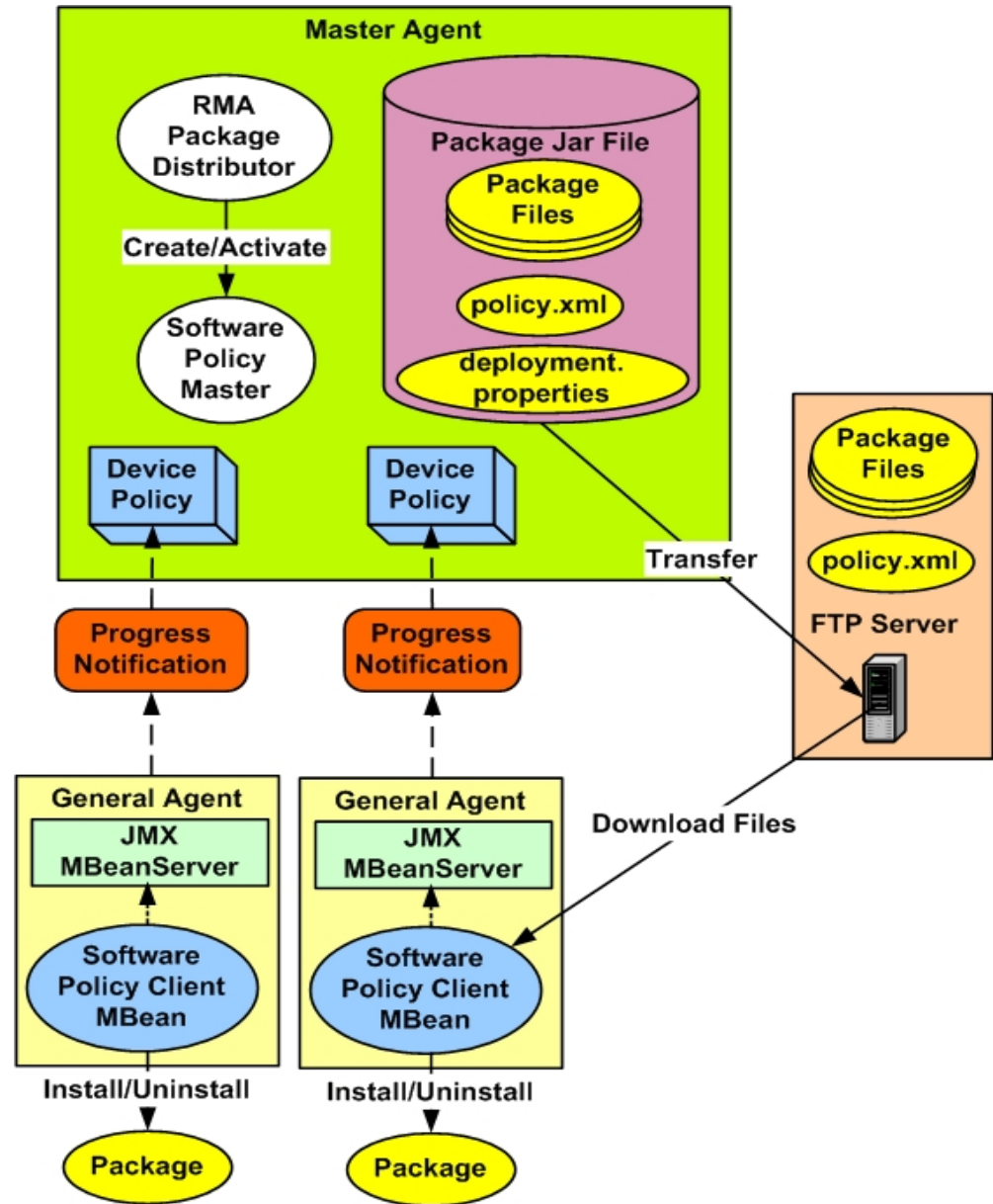
System State Manager

- Allows a device to perform a set of actions before executing a software policy
- Predefined states:
 - NOOP (Default, does nothing)
 - SW_MAINT
 - DATA_MAINT
 - Etc.
- Implement the SystemStateHandler interface to provide custom handlers for states
- Example: Code that shuts down POS App before updating

RMAPackageDistributorMBean

- Automates the creation of SW policies for 1 or more clients
- Unpacks and processes a package jar file:
 - Creates software policies for each device
 - Transfers package files to FTP server
- Package file must contain:
 - All package files in their target directory structure
 - Software policy XML file (policy.xml)
 - Deployment properties file (deployment.properties)
- Requires an FTP Server reachable by the MA and all clients
- Requires a one time configuration step to store FTP Information (Info is stored encrypted)

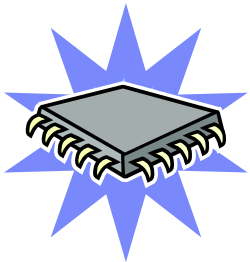
RMA Package Distributor



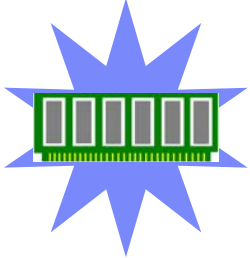
Installation On Windows or Linux

Hardware Requirements (Master Agent)

- ISP runs Remote Management Master Agent (One per store)
- Installed as a service on Windows or Linux



1 GHz processor or faster

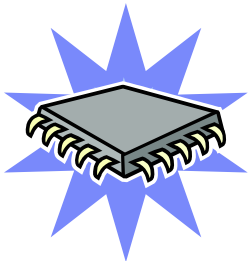


At least 100MB of free memory
(32MB used by JVM)

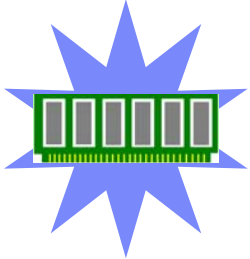
-Depends on the number of clients

Hardware Requirements (General Agent)

- Installed as a service on Windows or Linux



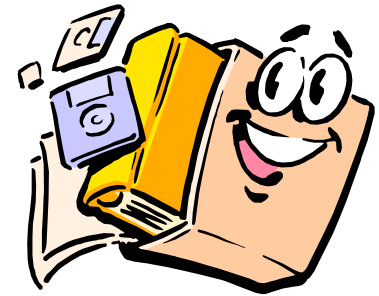
1 GHz processor or faster



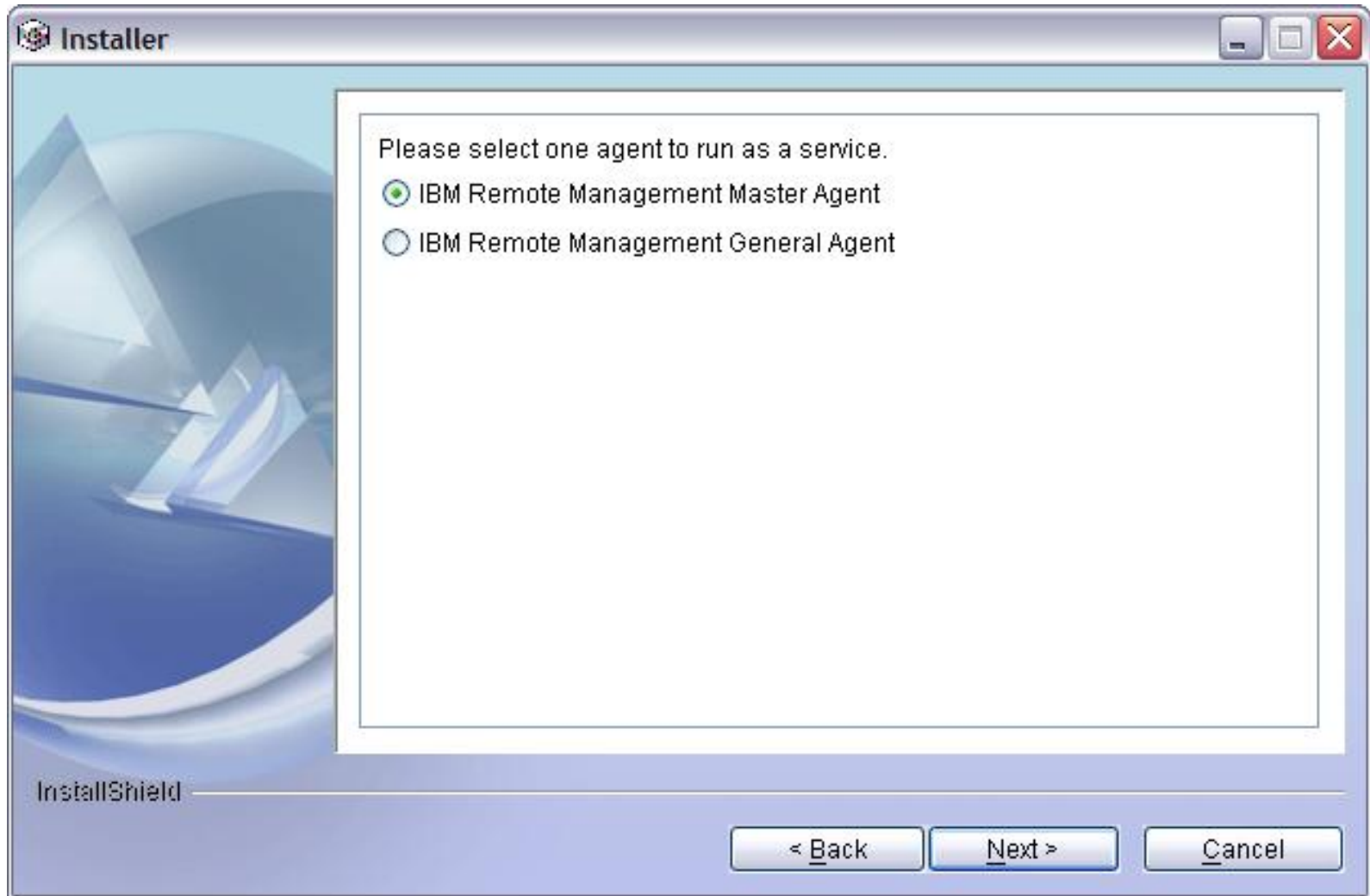
At least 40 MB of free memory
(32MB used by JVM)

Remote Management Agent Software

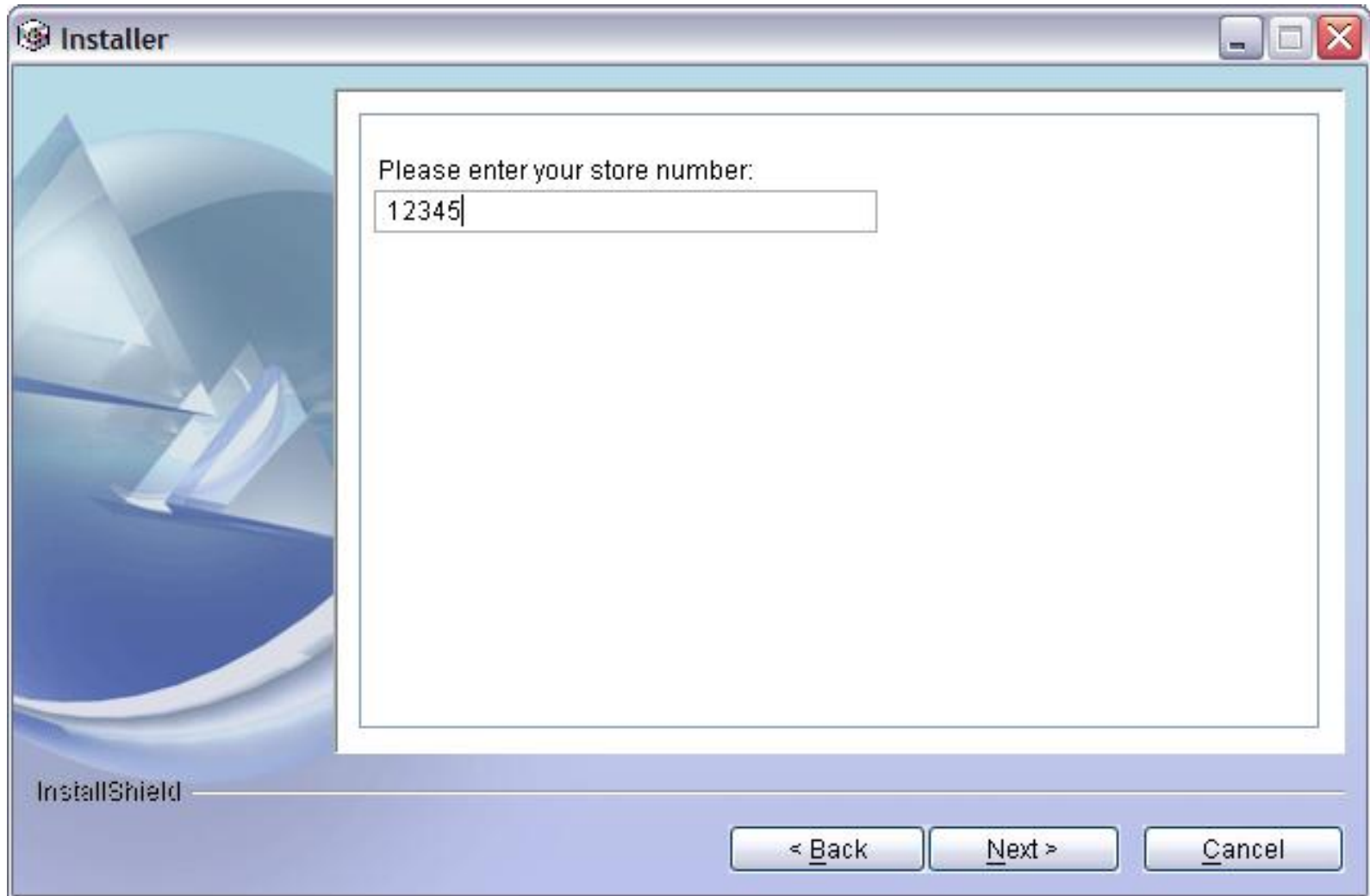
- IBM Remote Management Components
 - Master Agent
 - General Agent
- Requires IBM JDK or JRE, version 1.4.2
- Operating Systems
 - NLPOS V9 SSP2
 - Microsoft Windows Embedded Point of Service (WEPOS)
 - Windows XP SP2
 - Windows Server 2003
 - 4690 (When loaded by SIGUI, AEF, or DIF)
- FTP Server (Required by Software Distribution and Data Capture)



Agent Selection



Store Number (Master Agent Only)



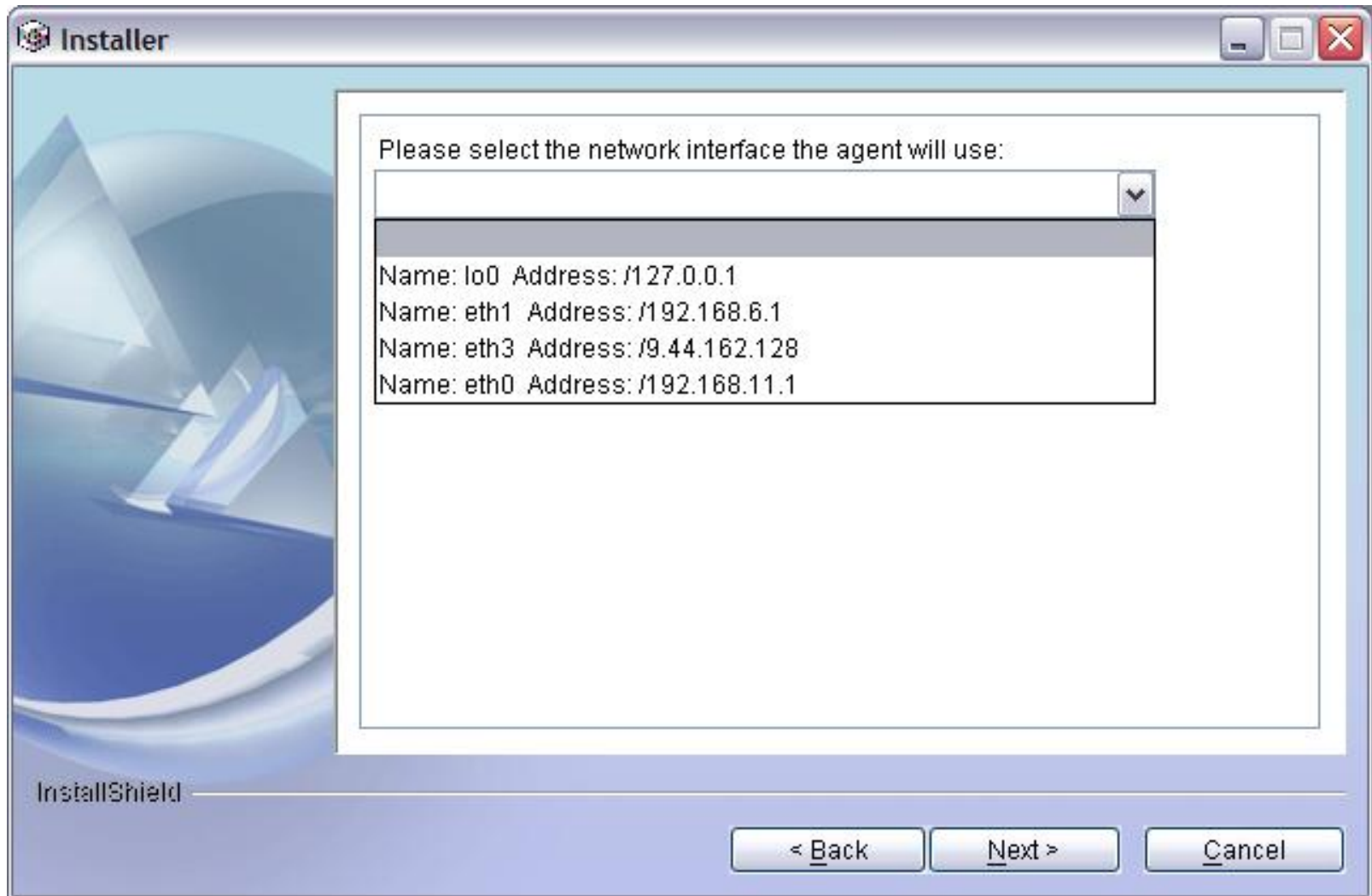
Installer

Please enter your store number:

InstallShield

< Back Next > Cancel

Interface selection



Install Changes

- New configuration\data directory SI_HOME/user/rma
- Directory is not deleted when RMA is uninstalled or upgraded
- Installer migrates V1 files under RMA_HOME
- Silent install

No more RMA Viewer Web App

- VIEWER component no longer available
- Replaced by Retail Extensions for IBM Director

AgentStartupMBean

- Used to extend the startup sequence of the Master Agent / General Agent by instantiating additional MBeans and/or adding Notification Listeners
- Processes one or more XML Files during startup, which describe the MBeans to create
- Add XML files to %SI_HOME%\user\rma\config\startup directory

Example XML File

```
<?xml version="1.0" ?>
<AgentStartupConfig>
<MBeans>
  <MBean className="com.ibm.retail.AEF.mgmt.AEFServiceability"
    objectName="masteragent:Id=AEFServiceability,SIFComponent=MGMT,SIFMBean=true">
  </MBean>
</MBeans>
<NotificationListeners>
  <NotificationListener
    listener="masteragent:Id=AEFServiceability,SIFComponent=MGMT,SIFMBean=true"
    mbean=":Id=NotificationControl,SIFComponent=MGMT,SIFMBean=true"/>
</NotificationListeners>
</AgentStartupConfig>
```

Agent Roles

- Set of roles and associated models that further describe the device
- Gives more criteria for applying policies
- Default Roles installed
 - RMA-MA, model RMA-V2
 - RMA-GA, model RMA-V2
- IBM Machine Model/Type automatically added
 - i.e. 4800-721 = Role=4800, Model=721

Adding Agent Roles

- Roles info kept in SI_HOME/user/rma/config/roles
- To add additional roles, add XML file to SI_HOME/user/rma/roles/ext

```
<?xml version="1.0" ?>
<AgentConfig>
  <Roles>
    <Role name="MyApp">
      <Model>MyApp-V1</Model>
    </Role>
  </Roles>
</AgentConfig>
```

Starting a GA in a Component JVM

- Done to instrument an application or device
- Starting a GA in a component JVM requires:
 - COMMON to be installed
 - The following jars in the classpath:
 - COMMON_HOME\simgmt.jar
 - COMMON_HOME\siutil.jar
 - COMMON_HOME\commons-logging.jar
 - COMMON_HOME\ext\mx4j.jar
 - COMMON_HOME\ext\mx4j_rmt.jar

Products that integrate with RMA

- MTR
 - Full instrumentation of device using MBeans
- IRES (Current version includes V1 Master Agent)
 - Cannot distribute software with V2 and IBM Director
- UPOS/JavaPOS for POS Peripherals
 - CIM Instrumentation for POS Peripherals (i.e. Printer)
 - Windows and IRES machines running JavaPOS 1.9.2
- 4690 (Not as a service, only through SIGUI, AEF, DIF)
- Store Integrator
 - AEF, DIF, SIGUI
- WEPOS
 - Preloaded with RMA General Agent

Resources

- User's guide
 - <http://www2.clearlake.ibm.com/store/support/html/pubs.html#RMA>
 - Installation instructions
 - Programming examples

- Javadoc
 - <http://www2.clearlake.ibm.com/store/support/html/pubs.html#RMA>