



IBM Systems and Technology Group University 2005

# IBM Systems and Technology Group University 2005



This educational piece is intended for your use in selling. It is NOT a deliverable for your customers | © 2005 IBM Corporation

© 2005 IBM Corporation



IBM Systems and Technology Group University 2005

# Tools for Technical People

Course #: IT35

Jim Cioffi  
iSeries Technical Support Marketing Mgr

Sharon Combs  
iSeries Technical Sales Specialist



V1.0

This educational piece is intended for your use in selling. It is NOT a deliverable for your customers | © 2005 IBM Corporation

© 2005 IBM Corporation

## Objectives

After completing this session, you should be able to:

- Describe the important tools available for iSeries technical people
- Choose the right tool for the job
- Use iSeries tools to design a server consolidation solution
- Explain the benefits of using CRM tools

## Agenda

- **Sizing tools**
- **Server consolidation tools**
- **Productivity tools**
- **Finding information**

*What's new*

*Choosing the right tool*

*"I didn't know it could do that!"*

# Sizing Tools



## Performance/Sizing/Capacity Planning Tools.

	Supplier	Performance Analysis	Capacity Planning
Performance Tools/400	IBM	Yes	No
Performance Explorer	IBM	Yes	No
iDoctor for iSeries	IBM	Yes	No
PM eServer iSeries	IBM	Yes	Some
IBM eServer Workload Estimator	IBM	No	Yes
PATROL® for iSeries - Predict	BMC	No	Yes
Performance Navigator®	MPG	Yes	Yes

- **TeamQuest Performance Software 9.2**
  - <http://www.teamquest.com/pressroom/pr/1004.shtml>

# Licensing

Function	User		BMC	MPG	IBM
			Patrol	PN/400	WLE
Sales Support	IBM - iSeries Presales		#Perpetual*	Internal Use License	No Charge
Problems/Critsits	IBM - iSeries Support		#Perpetual	Internal Use License	No Charge
Sales Support /Services	Business Partners	NA/EMEA	#Perpetual or 90-day	#Perpetual or 90-day	No Charge
		AP/LA	#Perpetual	#Perpetual or 90-day	No Charge
Budgeting	Customers		#Perpetual	#Perpetual or 90-day	No Charge
Services	IBM - ITS/IGS		#Perpetual	#Perpetual or 90-day	No Charge

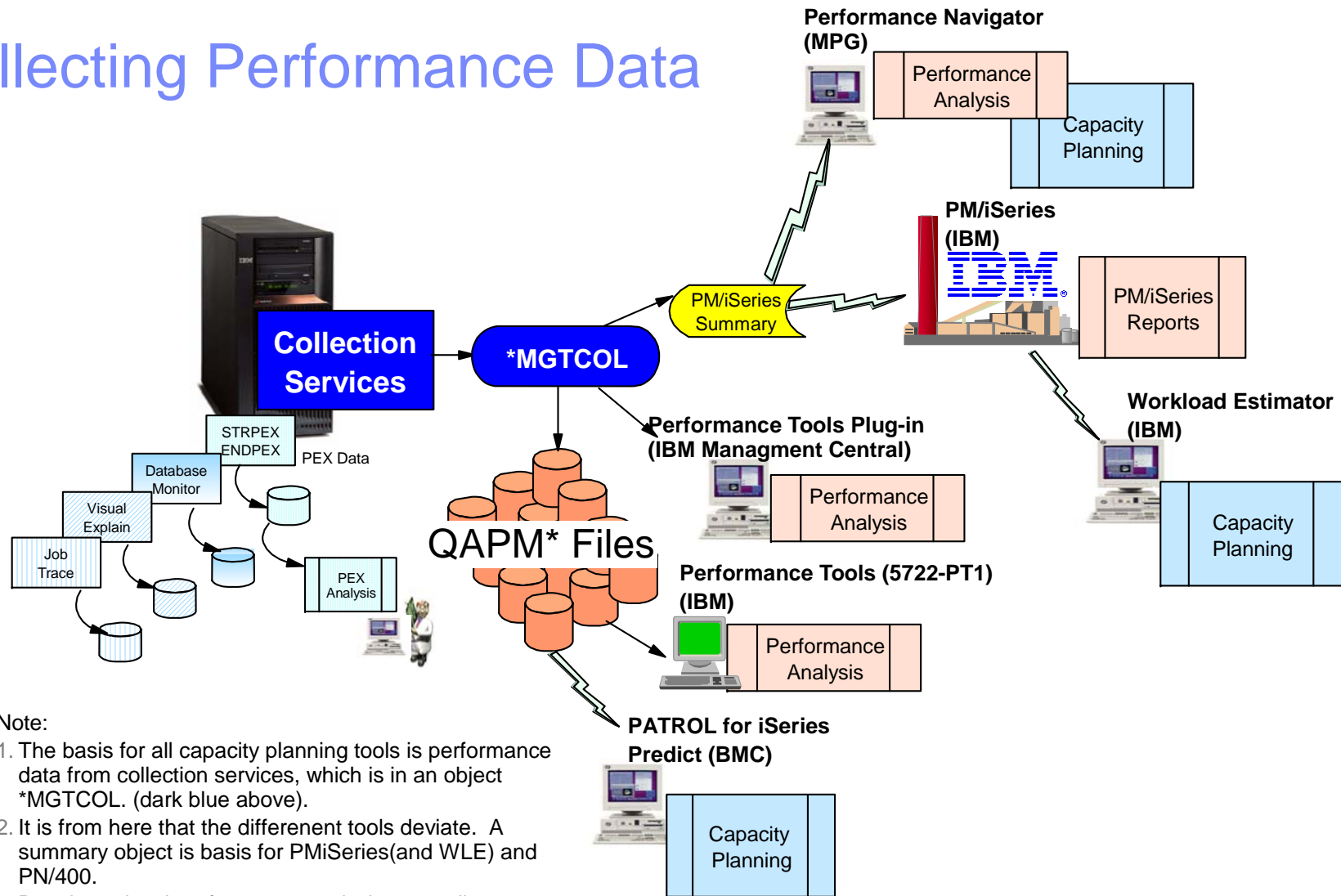
\* #Perpetual means per-server license purchased from vendor. License is associated with system serial number.

## Comparing the tools

<b>Patrol</b>	<b>PerfNav</b>	<b>WLE</b>
<ul style="list-style-type: none"> <li>■ Response time analysis</li> <li>■ Disk modeling</li> <li>■ Considers total system constraints (i.e. knee of curve - queuing model)</li> <li>■ Provides hourly analysis</li> <li>■ Detailed Work Segmentation</li> </ul>	<ul style="list-style-type: none"> <li>■ Graphing flexibility</li> <li>■ Performance analysis</li> <li>■ Disk modeling</li> <li>■ LPAR and SCON support</li> <li>■ Utilizes summarized PM iSeries data</li> <li>■ Ease of use</li> </ul>	<ul style="list-style-type: none"> <li>■ Sizes new workloads</li> <li>■ Sizes both new systems and replacement (upgrades) systems with PM eServer iSeries</li> <li>■ Multiple OS support via PM iSeries interface</li> <li>■ Recommends a solution</li> </ul>



# Collecting Performance Data



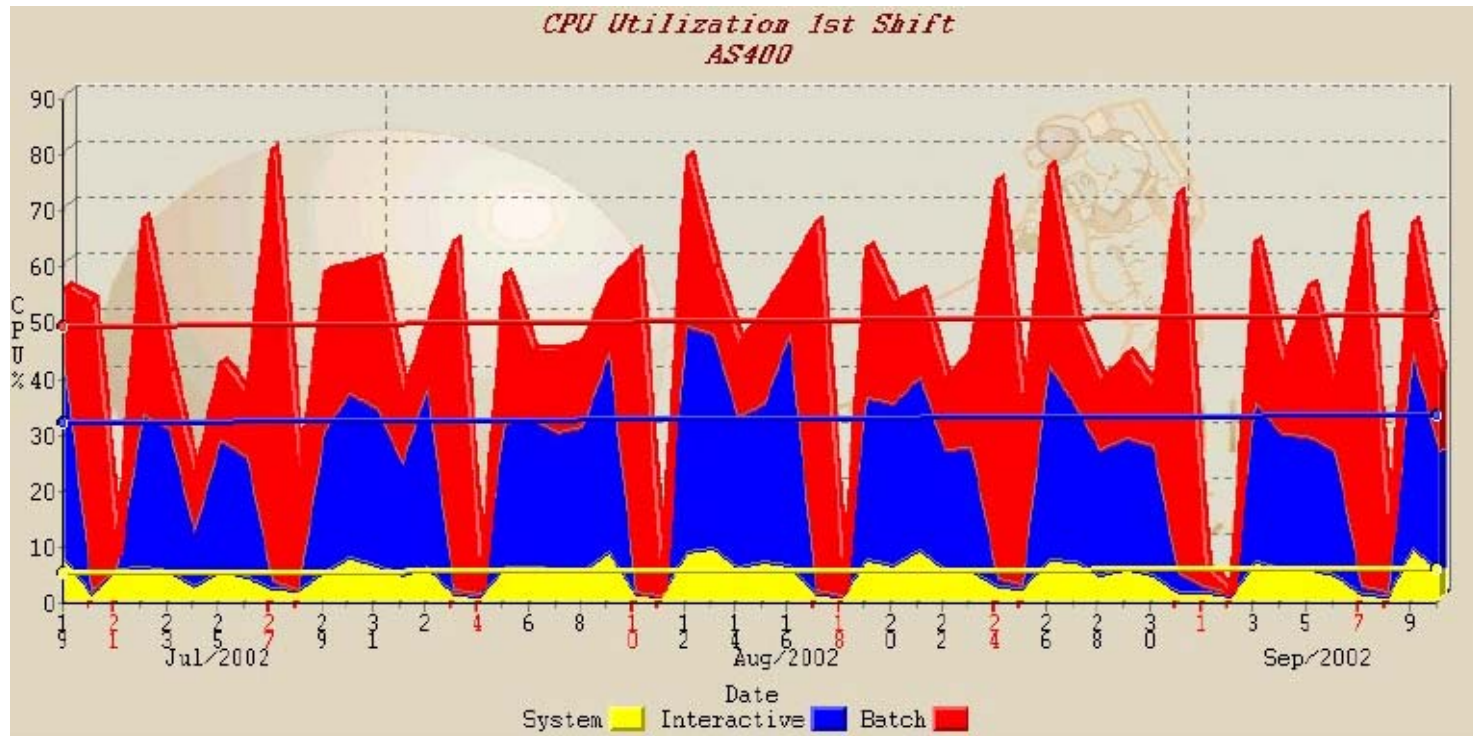
**Note:**

1. The basis for all capacity planning tools is performance data from collection services, which is in an object \*MGTCOL. (dark blue above).
2. It is from here that the different tools deviate. A summary object is basis for PMiSeries (and WLE) and PN/400.
3. Developer-level performance analysis generally uses a different data collection interface (light blue on the left).

## Collecting Performance Data

<p><b>Performance Navigator</b></p>	<p><b>Collection Objects or PM iSeries summary data reduced with PN/400. iSeries server needed to run analysis. Customer involvement required. iSeries Server needed.</b></p>
<p><b>Patrol-Predict</b></p>	<p><b>Collection Objects only. Customer involvement required. iSeries Server needed.</b></p>
<p><b>WLE/PM eServer iSeries</b></p>	<p><b>PM iSeries summary data only. No server access required.</b></p>

# MPG's Performance Navigator



## IBM eServer Workload Estimator

- **What's New**

- New GUI
- AIX Generic Workload
- AIX File and Web Serving Workloads
- Improved LPAR sizing support
- IBM eServer p5 support

## PM eServer iSeries

- **What's New:**

- Multi-OS support – AIX, Linux, i5/OS
- Interactive Graphing client for customers
- <http://www-1.ibm.com/servers/eserver/series/pm/>

# Selling IBM eServer i5 with PM eServer iSeries

## What

- PM iSeries can be used to help sell existing customers:
  - New workloads
  - New technology and the economics of the eServer i5

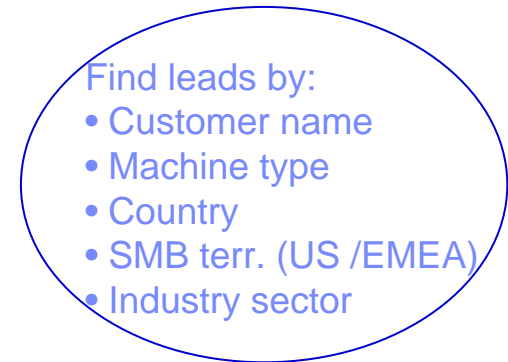
## How

- Get the growth and performance data on any system
  - resource constrained systems
  - unconstrained systems
  - consolidation opportunities
- Download PM iSeries reports to tell the story
- Pass the data to the Workload Estimator to size: capacity upgrades, WebSphere, Domino, Linux partitions, etc

It's FREE



PMiSeriesIS sales tool



New News !!

- Services leads now identified

## Customer not

## using PM iSeries?

- No problem...PM iSeries runs at all releases
- 60 day history transmits with first activation (V5R2 and later)

## PM eServer iSeries Resources

- Customer web site, country contacts and activation instructions:  
<http://www.ibm.com/eserver/series/pm>
- PMiSeriesIS client download site, education materials, customer presentations
  - IBMers: <http://w3.ibm.com/sales/systems>
    - Click on geography and iSeries; then look for Tools under Key Resources; then look for PMiSeriesIS
  - Business Partners:  
<http://www.ibm.com/partnerworld/sales/systems>  
(follow the same directions as above)
- IBM eServer Workload Estimator  
<http://www.ibm.com/eserver/series/support/estimator>
- Worldwide PM iSeries support  
email: [pmiseries@us.ibm.com](mailto:pmiseries@us.ibm.com)
- Worldwide Program Manager: Van Sammons [vdsammo@us.ibm.com](mailto:vdsammo@us.ibm.com)



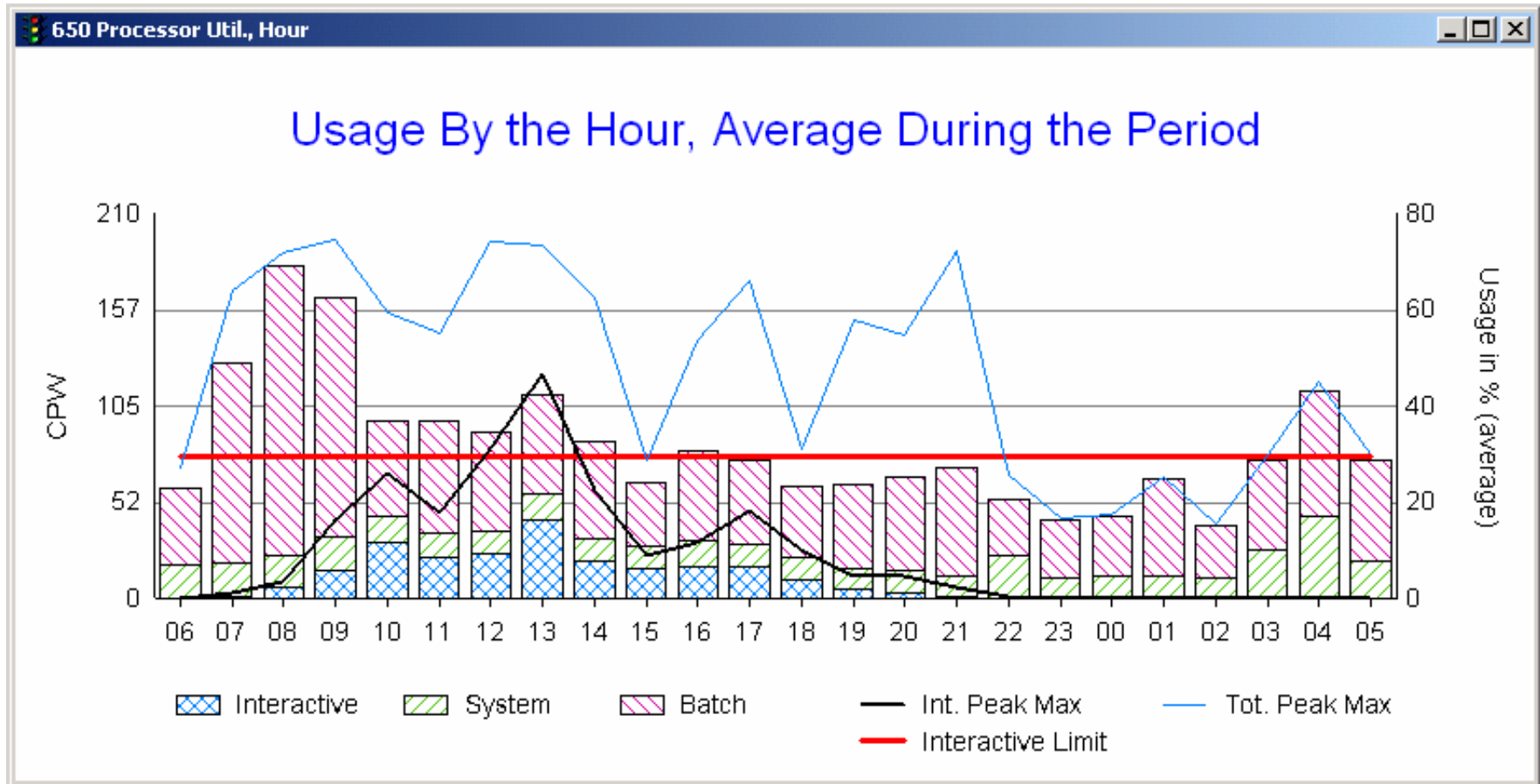
# PM eServer iSeries

Customer machine view, selection hit 80 rows

Customer Name	Type	Serial#	Model	CPU FC	Int FC	OS/400	Installation date	Last transm. date	Shift	CPU T,a	CPU T,p	CPU SI,a	CPU SI,p
RCHAS1 - IBM	9406	10-A5C5B00	825	7417	7417	5.3.0	1/1/1993	6/21/2004	1	21.68	28.49	2.63	4.28
RCHAS1 - IBM	9406	10-A5C5B00	825	7417	7417	5.3.0	1/1/1993	6/21/2004	2	20.96	37.80	2.17	4.59
RCHAS1 - IBM	9406	10-BEF4C	570	7469	7469	5.3.0	1/1/1993	11/24/2004	1	0.00	0.00	0.00	0.00
RCHAS1 - IBM	9406	10-BEF4C	570	7469	7469	5.3.0	1/1/1993	11/24/2004	2	0.00	0.00	0.00	0.00
RCHASA02 - IBM	9406	10-3L0TM	S40	2208		5.2.0	3/3/1999	11/23/2004	1	0.00	0.00	0.00	0.00
RCHASA02 - IBM	9406	10-3L0TM	S40	2208		5.2.0	3/3/1999	11/23/2004	2	0.00	0.00	0.00	0.00
RCHASA03 - IBM	9406	10-34CFC	570	7470	7470	5.3.0	1/1/1993	11/25/2004	1	0.00	0.00	0.00	0.00
RCHASA03 - IBM	9406	10-34CFC	570	7470	7470	5.3.0	1/1/1993	11/25/2004	2	0.00	0.00	0.00	0.00
RCHASA04 - IBM	9406	10-D48BF01	520	7454	7454	5.3.0	1/1/1993	11/25/2004	1	0.00	0.00	0.00	0.00
RCHASA04 - IBM	9406	10-D48BF01	520	7454	7454	5.3.0	1/1/1993	11/25/2004	2	0.00	0.00	0.00	0.00
RCHASA05 - IBM	9406	10-518ZM	830	23D5	1535	5.3.0	2/24/2002	11/25/2004	1	7.90	18.41	0.77	1.71
RCHASA05 - IBM	9406	10-518ZM	830	23D5	1535	5.3.0	2/24/2002	11/25/2004	2	7.20	17.72	0.64	1.83
RCHASA06 - IBM	9406	10-5W51M	830	23C1	1531	5.3.0	1/1/1993	11/25/2004	1	0.00	0.00	0.00	0.00
RCHASA06 - IBM	9406	10-5W51M	830	23C1	1531	5.3.0	1/1/1993	11/25/2004	2	0.00	0.00	0.00	0.00
RCHASA07 - IBM	9406	10-5HF8M	840	23ED	1545	5.2.0	2/18/2002	11/28/2004	1	25.58	30.59	2.27	3.31
RCHASA07 - IBM	9406	10-5HF8M	840	23ED	1545	5.2.0	2/18/2002	11/28/2004	2	28.19	38.66	1.82	2.73
RCHASA08 - IBM	9406	10-C0BAB	810	7412	7412	5.3.0	1/1/1993	11/25/2004	1	0.00	0.00	0.00	0.00
RCHASA08 - IBM	9406	10-C0BAB	810	7412	7412	5.3.0	1/1/1993	11/25/2004	2	0.00	0.00	0.00	0.00
RCHASA09 - IBM	9406	10-4G7YM	840	26B5	1545	5.2.0	5/31/2000	11/28/2004	1	3.92	5.22	0.61	1.18



# PM eServer iSeries





# PM eServer iSeries & WLE

## RCHASA07 V5R2M0

PM eServer iSeries Workload Definition

Partition Name: [Main #1](#)  
i5/OSTM - V5R3  
No LPAR

1. [System Information:](#)

7 months of  
PM eServer iSeries data  
available.

Company Name: RCHASA07 - IBM  
Serial: 10-5HF8M  
Model: 840-2418  
Feature: 1545  
System CPU: 30.6 % of 10,000 CPW  
Interactive CPU: 3.8 % of 4,550 CPW  
[# of Processors:](#) 12.0  
Memory: 24576 MB  
Disk Arms: 2.1 % utilization of 352 Arms installed  
Disk Storage: 1,061.8 GB (70.2 %) of 1,512 GB installed

[Disk Arms Distribution:](#)

Disk Configuration

2. Will this workload be changed to use [WebFacing or HATS Support?](#)

- WebFacing  
 HATS  
 No

3. [Growth Information:](#) [Months to Grow:](#)

12

[Memory Growth Matches:](#)

[Interactive CPU:](#)

36.25

CPW/Month

[NonInteractive CPU:](#)

404.75

CPW/Month

[Total System CPU:](#)

441.0

CPW/Month

[Disk Arms:](#)

19.156

Arms/Month

[Disk Storage:](#)

-168.261

GB/Month

[Memory:](#)

1083.802

MB/Month

(Grow Independently)



Back

Advanced Growth Options

Monthly Detail



Continue

# PM eServer iSeries & WLE

Version: 2004.4.fix.2  
29-Nov-04  
www-912

## IBM eServer Workload Estimator

IBM eServer Workload Estimator

**Workload Selection**
**Workload Definition**
**Selected System**
**Help/Tutorials**

Download PDF

Printable Version

• Choose Base System

• Options

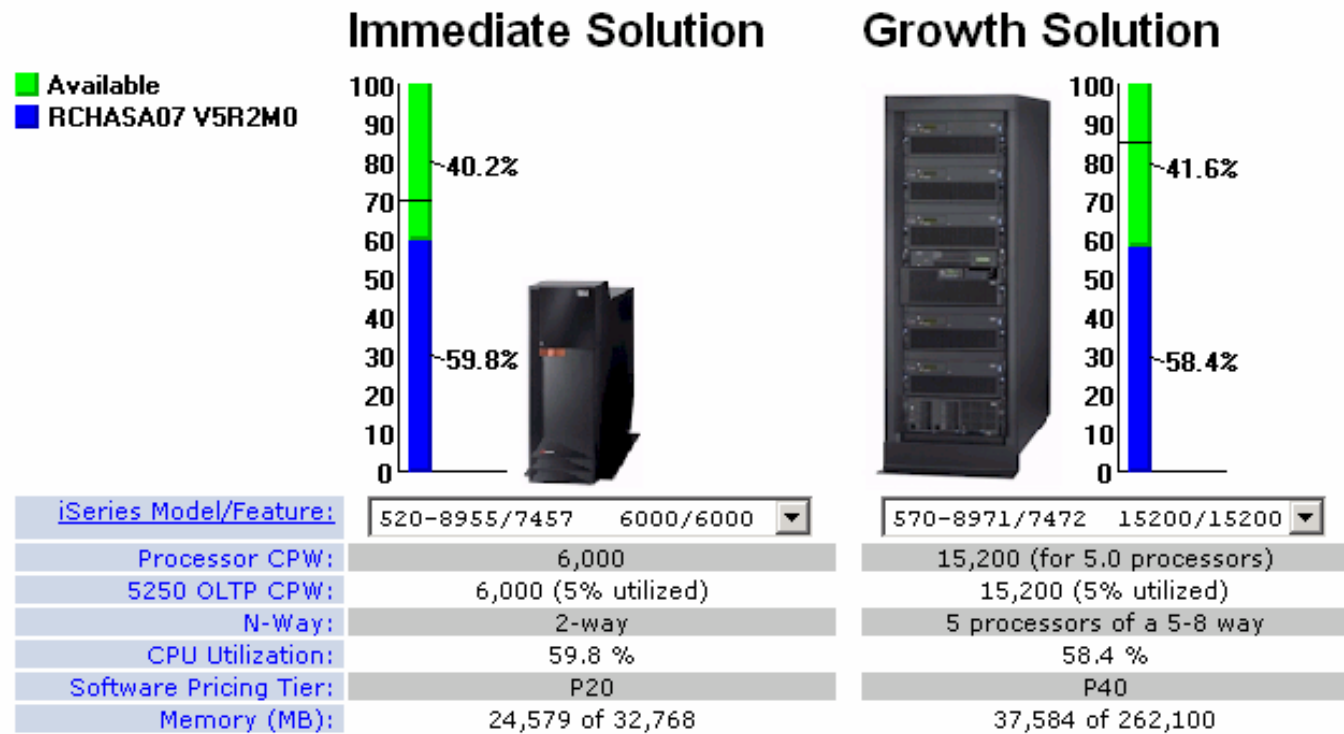
• Edit Estimation Info

• Options

• Change Growth Factors

• Save all Workloads

## Selected System



## Sizing External Storage

- **Disk Magic – Modeling tool to estimate performance of IBM disk subsystems**

- IBMer: [http://w3-1.ibm.com/sales/systems/portal/\\_s.155/254?navID=f220s380&geolD=AM&prodID=iSeries&docID=SSD5D00689DF4](http://w3-1.ibm.com/sales/systems/portal/_s.155/254?navID=f220s380&geolD=AM&prodID=iSeries&docID=SSD5D00689DF4)
- Partners: [http://www-1.ibm.com/partnerworld/sales/systems/myportal/\\_s.155/250?navID=f220s380&geolD=All&prodID=IBM%20eServer%20And%20TotalStorage%20Products&docID=SSD5D00689DF4](http://www-1.ibm.com/partnerworld/sales/systems/myportal/_s.155/250?navID=f220s380&geolD=All&prodID=IBM%20eServer%20And%20TotalStorage%20Products&docID=SSD5D00689DF4)

- **DS6000 sizing estimates**


- Sizing flash
- IBM internal use until DS600 support is available
- [http://w3-1.ibm.com/sales/systems/portal/\\_s.155/254?navID=f320s240&geolD=AM&prodID=iSeries&docID=ditiDS86perfsiz](http://w3-1.ibm.com/sales/systems/portal/_s.155/254?navID=f320s240&geolD=AM&prodID=iSeries&docID=ditiDS86perfsiz)



## Sizing AIX Workloads

- **Sizing eServer i5 servers for AIX 5L Workloads**

- [http://www-1.ibm.com/servers/eserver/iserie/aix/pdf/sizing\\_for\\_aix5l\\_apps.pdf](http://www-1.ibm.com/servers/eserver/iserie/aix/pdf/sizing_for_aix5l_apps.pdf)

<b>AIX File &amp; Web Serving</b> 	<b>Workload Estimator</b> <a href="http://www-912.ibm.com/wle/EstimatorServlet">http://www-912.ibm.com/wle/EstimatorServlet</a>
<b>ERP ISVs (Lawson, PeopleSoft, SAP)</b>	<b>Techline/Partnerline</b>
<b>Other Workloads</b>	<b>Vendor sizing tools, IBM eServer Sizing Guides</b> <a href="http://www.developer.ibm.com/welcome/eserver/e3/CSFServlet?mvcid=Welcome&amp;packageid=000">http://www.developer.ibm.com/welcome/eserver/e3/CSFServlet?mvcid=Welcome&amp;packageid=000</a>
<b>IBM pSeries and RS/6000 Performance Report</b>	<a href="http://www-1.ibm.com/servers/eserver/pseries/hardware/system_perf.html">http://www-1.ibm.com/servers/eserver/pseries/hardware/system_perf.html</a>

IBM Internal: Sizewize: [http://w3-1.ibm.com/support/americas/techline/q\\_swcap.html](http://w3-1.ibm.com/support/americas/techline/q_swcap.html)



# iSeries Server Consolidation Guide

## ■ IBM Competeline

– <http://w3-03.ibm.com/sales/competition/compdlib.nsf/812910a1f3d13c6ac12566a3003bfb86/868caa5f36137f6187256f19002cef5f?OpenDocument>

### – IBMers

- e-mail: [compline@us.ibm.com](mailto:compline@us.ibm.com) or Compline/Atlanta/IBM@IBMUS
- Call 1-888-426-5525, Option 4

### – Business Partners

- **PartnerWorld Contact Services (PWCS)**
- Phone: 1-800-426-9990  
Premiere and Advanced can use VRU:  
Option 1, Password, Option 4
- E-mail: [pwcs@us.ibm.com](mailto:pwcs@us.ibm.com)  
Subject: Competeline Request

## ■ IBM Internal-use only Consolidation Spreadsheet

– Partner availability being considered

## ■ Spreadsheet uses industry standard performance metrics to produce server consolidation estimates

# iSeries Server Consolidation Guide

- Adjustments for SMP and LPAR
- Adjusts for workload type
- AIX, Linux & i5/OS partitions
- Does not size memory
- Partition size is "mimimum" size

Microsoft Excel - eServer i5 Server Consolidation Guide 092204.xls

File Edit View Insert Format Tools Data Window Help Adobe PDF

Type a question for help

B2 ACME Computing

**eServer i5 Server Consolidation Guide for IBM and non-IBM Systems September 22, 2004**

START HERE		ACME Computing		For additional help, call Competeline 1-888-426-5525				Consolidated Results		
Click to clear		ACMEserver01		IBM eServer i5 0520-0905 1.65GHz-36MB (2)				Number of Partitions	Memory (GB)	% CPUs of Server Utilized
Server or Partition Name	Server Model or Partition (Number of Processors)	% Utilization	Solution Type Pick One	Operating System Pick One	% CPU Utilization SMP	Memory per Partition (GB)	Number of Partitions	3 Maximum is 20	4 Maximum is 32GB	69.1% with 1.38 processors
Base partition	IBM AS/400e 270-2252 450MHz-2MB (1)	50.0%	OLTP	i5 OS	7.9%	1	1	Selected with .21 processors per partition		
Linux01	HPQ HP 9000 L2000 360MHz (1)	80.0%	Commercial	Linux	6.2%	1	1	Selected with .17 processors per partition		
AIX01	IBM eServer pSeries 630-6E4 1.0GHz (1)	43.0%	Commercial	AIX 5.2	9.2%	2	1	Selected with 1.00 processors per partition		
Server or partition name to consolidate	Select a server to consolidate		OLTP	i5 OS				Enter information for this server		
Server or partition name to consolidate	Select a server to consolidate		OLTP	i5 OS				Enter information for this server		
Server or partition name to consolidate	Select a server to consolidate		OLTP	i5 OS				Enter information for this server		
Server or partition name to consolidate	Select a server to consolidate		OLTP	i5 OS				Enter information for this server		
Server or partition name to consolidate	Select a server to consolidate		OLTP	i5 OS				Enter information for this server		
Server or partition name to consolidate	Select a server to consolidate		OLTP	i5 OS				Enter information for this server		
Server or partition name to consolidate	Select a server to consolidate		OLTP	i5 OS				Enter information for this server		
Server or partition name to consolidate	Select a server to consolidate		OLTP	i5 OS				Enter information for this server		
Server or partition name to consolidate	Select a server to consolidate		OLTP	i5 OS				Enter information for this server		
Server or partition name to consolidate	Select a server to consolidate		OLTP	i5 OS				Enter information for this server		
Server or partition name to consolidate	Select a server to consolidate		OLTP	i5 OS				Enter information for this server		
Server or partition name to consolidate	Select a server to consolidate		OLTP	i5 OS				Enter information for this server		

Spreadsheet Use and Disclaimer | i5Consolidation

Ready



## LPAR Validation Tool

### What it is:

- **A PC based tool to assist the user in the design of a logically partitioned 270/8xx/5xx system according to manufacturing placement rules.**
- **It generates a report that can be used as a manual input to the configurator and as an implementation map.**

## LPAR Validation Tool

### How to get it?

- Download LVT & User Guide from LPAR website.
  - <http://www.ibm.com/servers/eservers/series/lpar>

### What PC requirements to run it?

- Windows 95 or higher
- 128MB memory installed
- Java™ Runtime Environment Version 2 Release1.2.2

### Support

- Send feedback/questions to [rchlvt@us.ibm.com](mailto:rchlvt@us.ibm.com)

## LPAR Validation Tool

- **More than just new hardware**
  - AIX on iSeries
  - pSeries systems included
  - New screens and data fields
  - New partition types (in OS column)
  - Customer Specified Placement (CSP)

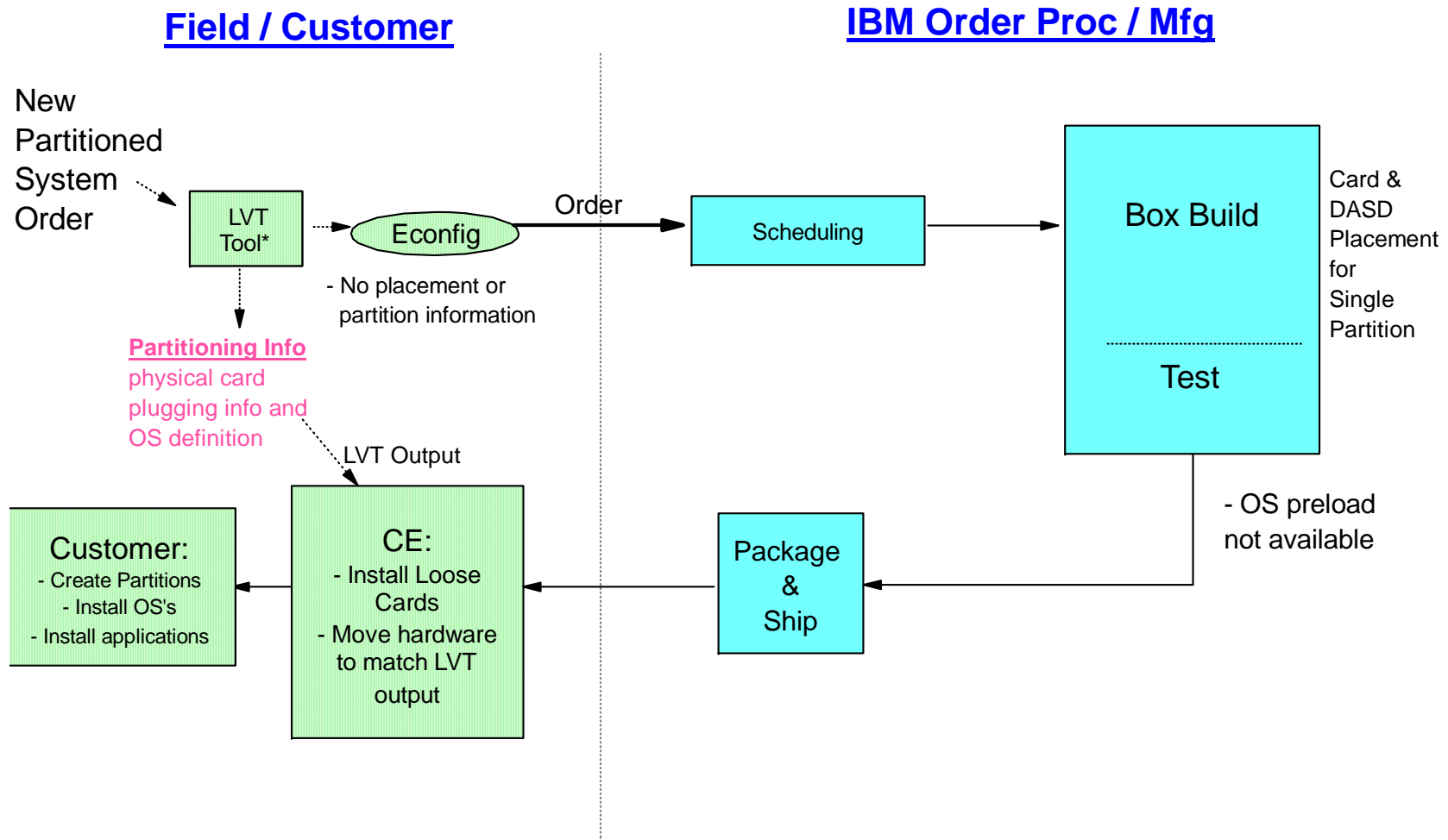
## LPAR Validation Tool → CSP

### **Customer Specified Placement (CSP)**

- Offered only on iSeries 595 and pSeries 590 & 595
- No charge placement feature 8453
- Billable implementation feature 0454 (\$300 per partition)
- Billable load feature 0455 (\$600 per partition)
- Additional time required for delivery
- Additional information needed with order
- Does not negate SAR requirement

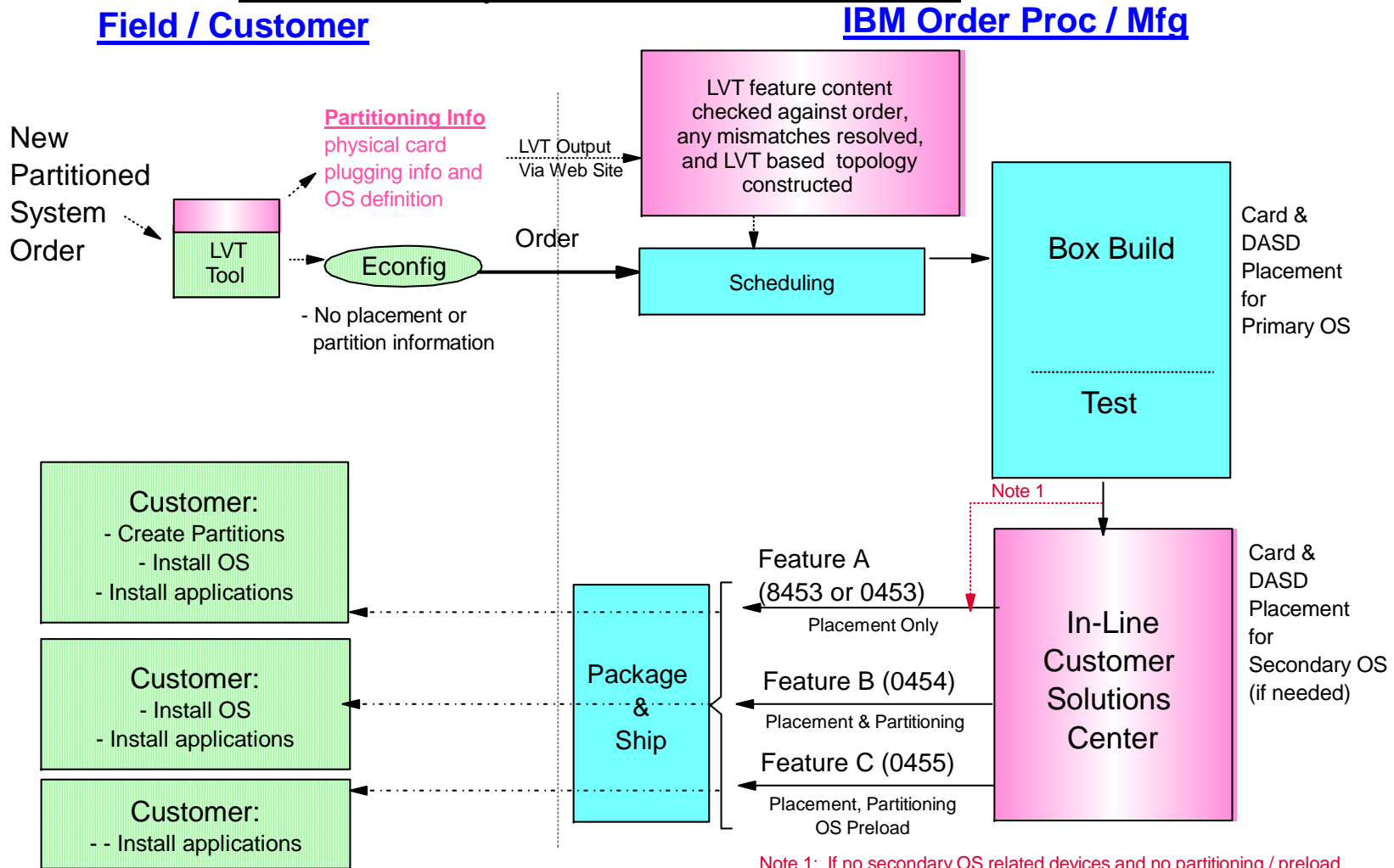
# Customer Specified Placement & LPAR Delivery

## Partitioned System Order Flow - TODAY



# Customer Specified Placement & LPAR Delivery

## Partitioned System Planned Order Flow



# Customer Specified Placement & LPAR Delivery

## Details of Customer Specified Placement & LPAR Delivery Offering

- **Feature Code 8453 "Base Customer Specified Placement"**
  - ▶ Customer Selectable (Qty = 1 per System)
  - ▶ No Charge Feature Code
  - ▶ Requires account team or BP to access Web site to send additional info (i.e.. LVT)
    - For more details see <http://www.ibm.com/eserver/power/csp/>
    - Included in the above Web Site are:
      - Step By Step processes
      - Comprehensive Planning Guide is available on this site
  - ▶ Available on i5-595 and p5-590 / p5-595
  - ▶ New (initial) order only, Not available on upgrades
- **Feature Code 0454 "LPAR Partition Initialization"**
  - ▶ Customer selectable ( Qty = 1 per partition )
  - ▶ This will be a charged FC
  - ▶ Available on i5-595 only (no pSeries offering)
  - ▶ Prereq is FC 8453
- **Feature Code 0455 "LPAR OS Preload"**
  - ▶ Customer selectable ( Qty = 1 per partition )
  - ▶ This will be a charged FC
  - ▶ Available on i5-595 only (no pSeries offering)
  - ▶ Prereq is FC 0454
  - ▶ No LPP's will be allowed

## Customer Specified Placement & LPAR Delivery

- **Critical success factors**
- **Establish customer requirements and plans before ordering the server.**
- **IBM must understand the exact specifications that your customer expects in order to address your customers requirements. This will require the final planning and design of your LPAR system to be completed prior to ordering the server.**
- **Use the Planning Guide located on <http://www.ibm.com/eserver/power/csp/>**
- **The planning guide presents and discusses the critical requirements, decisions, and process steps needed to successfully deliver this capability to your customer. Please read and follow the directions discussed in the guide.**
- **Keep the LVT output and the e-config order synchronized**
- **Mismatched LVT and order information, alterations, and late planning changes will likely cause your order to be delayed or require cancellation. Insuring the LVT placement specifications and the order match and stay synchronized will enable IBM to deliver a quality solution. Synchronization tips and techniques are discussed in the Planning Guide.**
- **Obtain a Partner World ID**
- **A Partner World id is required to submit your information to IBM via the website.**



# Customer Specified Placement & LPAR Delivery

## Here are the steps for getting started

1. Establish the plans for your new LPAR server
  2. Use the LVT to Design and establish your placement requirements
  3. Use eConfig to create your proposed system
  4. Create and submit your order to IBM
  5. Capture the order information
  6. Enter this information into the LPAR delivery nomination form on the CSP Web Site when contacted by RCHCSP
    - Authentication using an IBM Partner World ID will be required to submit this nomination.
    - You can apply for this ID through the ISV Registration for Partner World site if you have not previously registered.
    - You will attach the LVT .xml file to this nomination form
  7. Submit the Form
- Please remember that you are responsible to insure synchronization of the LVT placement information and the system order.

## Customer Specified Placement & LPAR Delivery

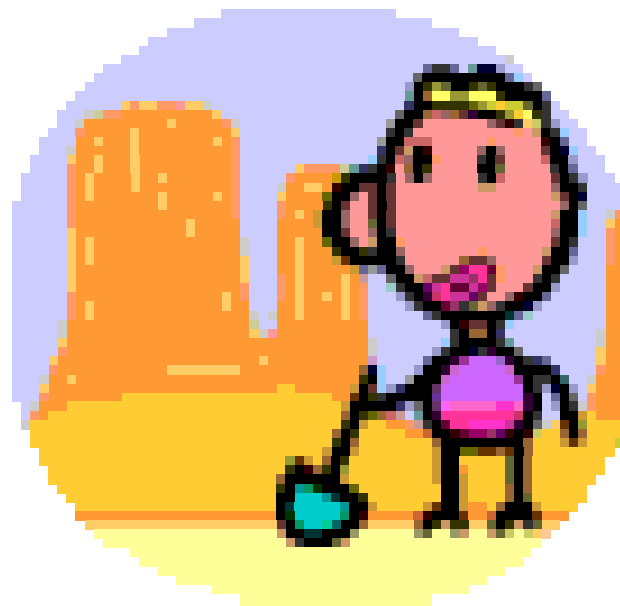
### What happens when LVT does not Match Order Details?

- The primary contact person listed in the CSP Web Site will be contacted
  - ▶ This person is identified when the form is submitted on the CSP Web Site
- Features not synchronized between the LVT and the Order Data will be identified
- Primary contact will be required to understand the error and follow the directions from the order desk to correct it
  - ▶ May require a Cancel and reorder process be invoked
  - ▶ This will insure that the IBM Order and the LVT data are in sync

## References and Helpful URLs

- <http://www.ibm.com/servers/eserver/power/csp>
- <http://www.ibm.com/servers/eserver/series/lpar>
- <http://www.ibm.com/servers/eserver/series/beyondtech/lpar.htm>
- <http://www.ibm.com/servers/eserver/series/lpar/systemdesign.htm>
- <http://www.ibm.com/servers/eserver/series/lpar/education.htm>
  
- <http://www.redbooks.ibm.com>
  
- **iSeries System Handbook** **GA19-5486**
- **iSeries System Builder** **SG24-2155**
- **Slicing the AS/400 with Logical Partitioning** **SG24-5439**
- **LPAR Configuration and Management** **SG24-6251**
- **Capacity Planning for Logical Partitioning....** **SG24-6209**
- **AIX 5L on i5: Implementation Guide** **SG24-6455**
- **Linux on i5: Implementation Guide** **SG24-6388**
  
- [rchtsc@us.ibm.com](mailto:rchtsc@us.ibm.com) & [rchlvt@us.ibm.com](mailto:rchlvt@us.ibm.com)

# Productivity Tools & Finding Information



## TechDocs

- **Technical Sales Library**
  - Flashes
  - Presentations
  - Hints, Tips & FAQs
  - Whitepapers
- **Accessible by**
  - IBM'ers
    - <http://w3-03.ibm.com/support/techdocs/atmastr.nsf/Web/Techdocs>
  - Partners
    - <http://partners.boulder.ibm.com/src/atmastr.nsf/Web/Techdocs>

Welcome to Techdocs - Microsoft Internet Explorer

File Edit View Favorites Tools Help

Back Forward Stop Refresh Home Search Favorites Media Print Mail News RSS Bluetooth

Address http://w3-03.ibm.com/support/techdocs/atmastr.nsf/Web/Techdocs

Links Rochester SiteNews NewsStand Preferences Search Issues Help

# w3 Techdocs - The Technical Sales Library

BluePages Search HelpNow Feedback

w3 Home

**Techdocs - The Technical Sales Library**

Flashes

Presentations & tools

Hints, tips & Technotes

FAQs

White papers

SSPDs - Solution Scenario Profiles

CSPs - Customer Support Plans

QPPs - Quick Proposals

RFIs and RFPs

TSGs - Technical Support Guides

Skills Transfer

Sizings

RFP FAQs

Newsletters

Search Techdocs

**Useful Links**

[GTSS - Global Technical Sales Support](#)

## Welcome to Techdocs

The **Techdocs** library provides access to the Technical Sales Support organization's technical information databases. It gives you access to the most current installation, planning, educational and technical support information available from IBM pre-sales support. The library is highly dynamic, constantly updated, and new documents are added daily.

**New to Techdocs?** Take a look at our [detailed introduction](#), which describes the document categories available (those listed on the navigation area on the left side of this page).

**Search:**   Allow word variants

**for:**

Hits:  Order by:   "Fuzzy" search

Include docs updated:   [Help for Search](#)

*Here's another way to explore Techdocs (and other Technical resources)...*

*	<a href="#">Flashes</a>	<a href="#">FAQs, Hints &amp; Tips</a>	<a href="#">Pres &amp; Tools</a>	<a href="#">QPPs</a>	<a href="#">Sizings</a>	<a href="#">Solutions</a>	<a href="#">Solution Assurance</a>	<a href="#">WPs, Redbks</a>	<a href="#">Links</a>
---	-------------------------	--	----------------------------------	----------------------	-------------------------	---------------------------	------------------------------------	-----------------------------	-----------------------

**Welcome to EZ-Links**

**ONE - STOP - SHOPPING FOR TECHNICAL SALES DOCUMENTATION**

**Techdocs**, Technical Sales Support, Americas' intellectual capital (IC) repository, gives you access to the most current technical sales support intellectual assets from IBM pre-sales support.

Specialized search pages

- ➔ [Latest Techdocs Library additions and updates](#)
- ➔ [Advanced search](#)

Brand-specific:

- ➔ [iSeries](#)
- ➔ [pSeries](#)
- ➔ [xSeries](#)
- ➔ [zSeries](#)
- ➔ [Networking](#)
- ➔ [Printing Systems](#)
- ➔ [TotalStorage](#)

S/W Pillar-specific:

- ➔ [Information Management](#)
- ➔ [Lotus](#)
- ➔ [Rational](#)
- ➔ [Tivoli](#)
- ➔ [Websphere](#)
- ➔ [zSeries](#)

Looking for Solutions?  
Working with ISVs?

- ➔ [The Solutions page](#)



## Collaboration Tools

- **Single source for all IBM collaboration tools**
  - Meetings & Events
  - Teams
  - Communities
- **Outbound collaboration**
  - Use with Customers & Business Partners
- **Access**
  - IBM'ers
    - <http://w3.ibm.com/collaboration/>

Address <http://w3.ibm.com/collaboration/>

Collaboration Central

Search w3    Search Collaboration Central

w3 home | BluePages | HelpNow | Feedback

Collaboration Central

- Overview
- Collaboration Advisor
- Outbound Collaboration
- Meetings and Events
- Teams
- Communities
- Individual Initiatives

Approved tools:

**MEETINGS AND EVENTS**

- Notes calendar
- e-meetings\*
- Conference Rooms\*

**TEAMS**

- QuickPlace\*
- TeamRoom Plus
- Knowledge Café

**COMMUNITIES**

- CommunityMap
- Forums

**INDIVIDUAL**

Done

## Collaboration Central

### Announcing Lotus QuickPlace at IBM

QuickPlace sets the new standard for connecting with customers and Business Partners.

[READ](#)

### Best Practices news

[Teaming in a high performance culture](#)  
A look at mastering one of IBM's foundational competencies.

[Impact Guides: Reach the Summit in your next collaborative journey](#)  
Enabling your team to climb to the height of team performance - collaboration - just got a little easier.

[ARTICLE ARCHIVE](#)

### Industry news

[Real ROI from Lotus tools](#)  
For 20,000 IBMers, Lotus innovation

### Featured events & offerings

[Outbound Collaboration: extend your reach](#)  
Collaborate with customers and Business Partners using this powerful suite of tools.

[Power Up! sessions](#)  
Interested in optimizing your effectiveness using Collaborative tools? Enroll in one of our on demand e-learning sessions today:

- [TeamRoom Plus](#)
- [Web Conferences](#)
- [Outbound Collaboration](#)

[The Document Library Pilot is underway](#)  
Sharing documents with IBM colleagues just got a lot easier. Doc Library is your personal online repository of documents

### Looking to collaborate?

This step-by-step planner helps you determine which collaboration tools are best for your task.

[COLLABORATION ADVISOR](#)

### Outbound collaboration

Collaborate more effectively with customers and Business Partners using this powerful suite of tools.

[LEARN MORE](#)

### Sandbox technologies

These tools have no availability, support or satisfaction guarantees. There may be community support through a forum.

[GO TO SANDBOX](#)

### Engage the community

Search BluePages for [collaboration expertise](#).

Ask questions, get answers, join

Local intranet



## WorldWide Question & Answer Database

- **New front end for Retain database (i.e. Viewblue)**
- **Runs in parallel with ViewBlue until Jan 2005**
- **Ability to Search & Author Questions**
- **Accessibility**
  - IBM'ers:
    - <http://d25dbw26.mkm.can.ibm.com/wwqa/wwqa.nsf/wwqalogn?OpenForm>
  - Business Partners: Fee Based via IBMLink / IBMLink 2000
    - <http://www.ibm.com/ibmlink/link2>
    - Registration Link  
<https://www.ibm.com/account/profile?page=reg&okurl=http%3A%2F%2Fwww.ibm.com%2Fibmlink%2Flink2%2Flogon%2FlogonPage.jsp&LANG=null>

Address <http://d25dbw26.mkm.can.ibm.com/wwqa/wwqa.nsf/wwqahome?OpenForm&u=35D29D553974B81A85256F4D005C7359>

Links [Rochester SiteNews](#) [NewsStand](#) [Preferences](#) [Search](#) [Issues](#) [Help](#)

**w3** World Wide Question & Answer (WWQ&A) Search w3  [GO](#)

[w3 Home](#) [BluePages](#) [HelpNow](#) [Fee](#)

---

WWQ&A search

APAR guided search

PTF guided search

Display Doc / PMR #

All my questions

My dept. questions

Author a usage question

User profile

Feedback

Acronym lookup

Other technical links

LogOff

## WWQ&A search

**Fill any applicable information, then press the Go button**

**Search Argument:**  [Go](#)

Or select from your saved 0 search arguments

Or select from your previous 2 search arguments

**Select [Library\(s\)](#):**

<input type="checkbox"/> Q&A <a href="#">Usage Library</a> - US	<input type="checkbox"/> APAR/PTF - zSeries, z/OS ,MVS
<input type="checkbox"/> Q&A's in <a href="#">Progress</a>	<input type="checkbox"/> APAR/PTF - VM, VSE, etc
<input type="checkbox"/> Problem Diagnosis Data ( <a href="#">PDD</a> )	<input type="checkbox"/> APAR/PTF - iSeries and pSeries
<input type="checkbox"/> <a href="#">Flashes</a> (pre 2002) & Technical Bulletins	<input type="checkbox"/> APAR/PTF - xSeries and misc Products
<input type="checkbox"/> <a href="#">Hints and Tips</a>	<input type="checkbox"/> APAR/PTF - Program Products
<input checked="" type="checkbox"/> Problem Management Hardware ( <a href="#">PMH</a> )	<input type="checkbox"/> APAR/PTF - CAD/CAM Products
<input type="checkbox"/> Problem Management Software ( <a href="#">PMS</a> )	

**Updated on or after:**  dd/mm/yyyy

**Closed on or after:**  dd/mm/yyyy

**Search for:**  APARs  PTFs  All Items

**Use [synonyms](#)?**  Yes  No (valid only on APAR/PTF searches)

**Sort search results?**  Updated Date  Item #  Abstract  No

Related links:

[w3 Support](#)

[Techdocs](#)

[Retain on the web](#)

# Find and Compare Tool

- Web-based database of iSeries hardware, features, upgrades, and ballpark pricing
- Weekly updates (more often near announcements)
- More current than documentation

The screenshot shows the IBM eServer FACT website. At the top, it says 'FACT' with 'find', 'compare', and 'tools' written below the letters. To the right is the 'IBM eServer' logo. Below the main title is a navigation bar with 'Find and Compare Tools' and 'FACT Help'. There are radio buttons for 'iSeries' (selected) and 'zSeries'. A list of four main actions is provided: 'Find' (Search for systems with specific characteristics), 'Compare' (Look at the details of one or more systems), 'Upgrade' (Supported hardware upgrade paths are specially priced exchanges that allow your system serial number to remain unchanged), and 'Expansion' (Look at details for the base expansion and optional expansion types). Below this is a section 'Find systems that...' with four bullet points: '...are an IBM eServer i5 offering', '...are a Dedicated Server for Domino (DSD)', '...support Capacity Upgrade on Demand', and '...support AIX'. On the right side, there is a 'Ready to buy' section with a link 'Buy Midrange Servers Online' and an 'Announcement' section with an image of a server and the text 'ANNOUNCING IBM eServer i5 595' and a 'Learn more' link.

- <http://www-919.ibm.com/servers/eserver/fact/>

# Find and Compare Tool - Upgrades

[Home](#) | [Products](#) | [Services & solutions](#) | [Support & downloads](#) | [My account](#)

iSeries FACTs home: - [Find](#) - [Compare](#) - [Upgrade](#) - [Expansion](#) - [Getting Started](#)

## Upgrade

Model

[Buttons sort \(+/-\)](#)

Change column  to

<input type="text" value="1-"/>	<input type="text" value="2"/>	<input type="text" value="3"/>	<input type="text" value="4"/>	<input type="text" value="5"/>	<input type="text" value="6"/>	<input type="text" value="7"/>	<input type="text" value="8"/>	<input type="text" value="9"/>	<input type="text" value="10"/>
<a href="#">System</a>	<a href="#">Upgrade Price</a>	<a href="#">Processor CPW</a>	<a href="#">Upgrades</a>	<a href="#">Software Tier</a>	<a href="#">n-way</a>	<a href="#">Ent Enable / 5250 CPW</a>	<a href="#">MCU</a>	<a href="#"># of Licenses</a>	<a href="#">Disk GB</a>
825_0773_7416	-	-	<u>7</u>	P30	3 / <u>6</u>	- / 0	17400	3	58216
595_0946_7496	<u>696,634</u>	24500 / <u>45500</u>	<u>1</u>	P50	8 / <u>16</u>	- / 0	102000	4	116700
570_0930_7490	<u>50,366</u>	3300 / <u>6000</u>	<u>5</u>	P30	1 / <u>2</u>	- / 0	13300	1	19460
_0926_7475	<u>382,191</u>	36300 / <u>44700</u>	<u>2</u>	P40	13 / <u>16</u>	- / 0	102000	4	98300
_0924_7473	<u>315,316</u>	25500 / <u>33400</u>	<u>3</u>	P40	9 / <u>12</u>	- / 0	77000	4	78850
_0922_7471	<u>251,341</u>	15200 / <u>23500</u>	<u>4</u>	P40	5 / <u>8</u>	- / 0	52500	4	59390
_0921_7494	<u>62,066</u>	6350 / <u>12000</u>	<u>5</u>	P30	2 / <u>4</u>	- / 0	26600	1	38910
550_0915_7462	<u>58,029</u>	3300 / <u>12000</u>	<u>1</u>	P20	1 / <u>4</u>	- / 0	26600	1	38910

7 Systems found.

# Find and Compare - Details

This data represents an upgrade from **v5r3** to **v5r3**

**From 825\_0773\_2473\_7416**  
 9406 iSeries Model 825 System Unit  
 0773 iSeries Domino Server Feature  
 7416 Model 825 Standard  
 2473 Model 825 3/6-way CUoD

**To 570\_0930\_8971\_7490**  
 9406 (eServer) Model 570

**Conversion**  
 0930 Server Feature  
 8971 Model 570 8971 Processor  
 7490 Model 570 7490 Package

**Additional**

8452 Base Processor Activation		
2 x 6458 14-Ft Int 250V/10A Power Cord		132
6246 1.8 Rack Trim Kit		2,175
5709 RAID Enabler Card		1,000
5160 Power Dist Unit 1 Phase NEMA		2,600
4452 2GB DDR-1 Main Storage		5,313
3 x 4326 35.16GB 15k rpm Disk Unit		378
2640 DVD-ROM		
1426 200V 14-Ft Locking Line Cord		
0834 Load Source Specify for 4326		
0551 iSeries Rack		2,668

**Carry Over**

9844 Base PCI IOP		
9793 Base PCI 2-Line WAN w/Modem		
5544 Sys Console on OP Console		
5000 Software Preload Required		
2924 English		
1025 Modem Cable-US/Canada		
0530 Software Version V5R3		
0367 Operations Console PCI Cable		

	MCU	# of Licenses	Disk GB
7			
8	17400	3	58216
9	102000	4	116700
10	13300	1	19460
	102000	4	98300
	77000	4	78850
	52500	4	59390
	26600	1	38910
	26600	1	38910

## IBM eServer Prerequisite Tool

- **Hardware and Software pre-reqs for iSeries features**
- **Models supported**
- **PTFs and firmware fix levels**
- **[http://www-912.ibm.com/e\\_dir/eServerPrereq.nsf](http://www-912.ibm.com/e_dir/eServerPrereq.nsf)**



# IBM eServer Prerequisite Tool – find a feature

Feature Prerequisites | Hardware | Software

Model:

Machine Type:

Feature Code:

Search Results			
Feature Code	Model(s)	Machine Type(s)	Feature Description
<a href="#">2591</a>	520, 550, 570	9111, 9113, 9117	External USB 1.44 MB Diskette Drive
<a href="#">2738</a>	520, 550, 570	9111, 9113, 9117	2-Port USB PCI Adapter
<a href="#">2849</a>	520, 550, 570	9111, 9113, 9117	POWER GXT135P Graphics Accelerator with Digital Support
<a href="#">2943</a>	520, 550, 570	9111, 9113, 9117	8-Port Asynchronous Adapter EIA-232/RS-422, PCI bus
<a href="#">2944</a>	520, 550, 570	9111, 9113, 9117	128-Port Asynchronous Controller, PCI bus

# IBM eServer Prerequisite Tool - details

Model:

Machine Type:

Feature Code:

### Feature prerequisite information

Machine Type(s) Supported:	9111, 9113, 9117
Feature Code:	3277
Description:	36.4 GB 15,000 RPM Ultra320 SCSI Disk Drive Assembly
Model(s) supported:	520, 550, 570
Information:	
End of Marketing:	
End of Service:	
Replacements (if no longer supported):	
Information Last Updated:	24 Sep 2004 01:30 PM
Other Information:	

Code	Version/ Release	Fix Level	Other Info
server firmware	FW2.2.0	SF220_045	
AIX 5L	5200-04		
Version 5.2			



## Reference : iSeries URLs

Announcement Letters ---- IBM ---- iSeries	<a href="http://www-306.ibm.com/common/ssi/OIX.wss">http://www-306.ibm.com/common/ssi/OIX.wss</a> <a href="http://www-1.ibm.com/servers/eserver/series/announce/">http://www-1.ibm.com/servers/eserver/series/announce/</a>
Brochures	<a href="http://www-1.ibm.com/servers/eserver/series/literature/">http://www-1.ibm.com/servers/eserver/series/literature/</a>
Consultant Reports	<a href="http://www-1.ibm.com/servers/eserver/series/literature/reports_papers.html">http://www-1.ibm.com/servers/eserver/series/literature/reports_papers.html</a>
Directory Services (LDAP)	<a href="http://www.ibm.com/servers/eserver/series/ldap">http://www.ibm.com/servers/eserver/series/ldap</a>
Domino Home Page	<a href="http://www.ibm.com/servers/eserver/series/domino">http://www.ibm.com/servers/eserver/series/domino</a>
Education ---- The Campus ---- iSeries	<a href="http://www-1.ibm.com/servers/eserver/education/index.html">http://www-1.ibm.com/servers/eserver/education/index.html</a> <a href="http://www-1.ibm.com/servers/eserver/education/cust/series/custiseries.html">http://www-1.ibm.com/servers/eserver/education/cust/series/custiseries.html</a>
IBM eServer Solutions	<a href="http://www.ibm.com/servers/solutions/e-business/series">http://www.ibm.com/servers/solutions/e-business/series</a>
IBM Global Financing	<a href="http://www-1.ibm.com/financing">http://www-1.ibm.com/financing</a>
IBM Global Services	<a href="http://www-1.ibm.com/services/us/index.wss">http://www-1.ibm.com/services/us/index.wss</a>

## Reference : iSeries URLs

iSeries	<a href="http://www-1.ibm.com/servers/eserver/series/aix/">http://www-1.ibm.com/servers/eserver/series/aix/</a>
---- AIX 5L on eServer i5	<a href="http://www-1.ibm.com/servers/eserver/series/ondemand/cod/">http://www-1.ibm.com/servers/eserver/series/ondemand/cod/</a>
---- Capacity On Demand	<a href="http://www-1.ibm.com/servers/eserver/series/hardware/editions/">http://www-1.ibm.com/servers/eserver/series/hardware/editions/</a>
---- Editions	<a href="http://www-1.ibm.com/servers/eserver/series/hardware/is4ha/">http://www-1.ibm.com/servers/eserver/series/hardware/is4ha/</a>
---- High Availability	<a href="http://publib.boulder.ibm.com/html/as400/infocenter.html">http://publib.boulder.ibm.com/html/as400/infocenter.html</a>
---- Information Center	<a href="http://www-1.ibm.com/servers/eserver/series/hardware/">http://www-1.ibm.com/servers/eserver/series/hardware/</a>
---- Hardware	<a href="http://www.ibm.com/servers/eserver/series/software/http">http://www.ibm.com/servers/eserver/series/software/http</a>
---- HTTP Server for iSeries	<a href="http://www-1.ibm.com/servers/eserver/series/access/">http://www-1.ibm.com/servers/eserver/series/access/</a>
---- iSeries Access	<a href="http://www-1.ibm.com/servers/eserver/series/navigator/">http://www-1.ibm.com/servers/eserver/series/navigator/</a>
---- iSeries Navigator	<a href="http://www-1.ibm.com/servers/eserver/series/linux/">http://www-1.ibm.com/servers/eserver/series/linux/</a>
---- Linux on iSeries	<a href="http://www-1.ibm.com/servers/eserver/series/lpar/">http://www-1.ibm.com/servers/eserver/series/lpar/</a>
---- Logical Partitioning	<a href="http://www-1.ibm.com/servers/eserver/series">http://www-1.ibm.com/servers/eserver/series</a>
---- Midrange Servers	<a href="http://www-912.ibm.com/supporthome.nsf/document/29853352">http://www-912.ibm.com/supporthome.nsf/document/29853352</a>
---- Release Support	<a href="http://www-1.ibm.com/servers/eserver/series/scon/">http://www-1.ibm.com/servers/eserver/series/scon/</a>
---- Server Consolidation	<a href="http://www-912.ibm.com/supporthome.nsf/document/18454618">http://www-912.ibm.com/supporthome.nsf/document/18454618</a>
---- Services	<a href="http://www-1.ibm.com/servers/eserver/series/software/">http://www-1.ibm.com/servers/eserver/series/software/</a>
---- Software	<a href="http://www-1.ibm.com/servers/eserver/support/series/index.html">http://www-1.ibm.com/servers/eserver/support/series/index.html</a>
---- Support	<a href="http://www.redbooks.ibm.com/redbooks/pdfs/ga195486.pdf">http://www.redbooks.ibm.com/redbooks/pdfs/ga195486.pdf</a>
---- System Handbook	<a href="http://www-1.ibm.com/servers/eserver/series/support/planning/nav.html">http://www-1.ibm.com/servers/eserver/series/support/planning/nav.html</a>
---- Upgrade Planning	<a href="http://www-1.ibm.com/servers/eserver/series/integratedxseries/windows/">http://www-1.ibm.com/servers/eserver/series/integratedxseries/windows/</a>
---- Windows Integration	

## iSeries URLs

Magazine Sites ---- iSeries Magazine ---- Midrange Computing	<a href="http://eservercomputing.com/series/">http://eservercomputing.com/series/</a> <a href="http://mcpressonline.com">http://mcpressonline.com</a>
PartnerWorld for Developers	<a href="http://www-919.ibm.com/servers/eserver/series/developer/">http://www-919.ibm.com/servers/eserver/series/developer/</a>
Performance & Capacity Planning ---- iSeries Navigator ---- Performance Management ---- PM eServer iSeries ---- Workload Estimator	<a href="http://www-1.ibm.com/servers/eserver/series/navigator/index.html">http://www-1.ibm.com/servers/eserver/series/navigator/index.html</a> <a href="http://www-1.ibm.com/servers/eserver/series/perfmgmt/">http://www-1.ibm.com/servers/eserver/series/perfmgmt/</a> <a href="http://www-1.ibm.com/servers/eserver/series/pm/">http://www-1.ibm.com/servers/eserver/series/pm/</a> <a href="http://www-912.ibm.com/supporthome.nsf/document/16533356">http://www-912.ibm.com/supporthome.nsf/document/16533356</a>
Planning and Odering ---- Electronic Service Agent ---- Find & Compare Tool ---- IBM eServer Prereq ---- LPAR Validation Tool ---- Planning ---- Physical Planning Guide ---- Query Order Status ---- System Inventory Assistant	<a href="http://publib.boulder.ibm.com/isrvagt/sdsadoc.html">http://publib.boulder.ibm.com/isrvagt/sdsadoc.html</a> <a href="http://www-919.ibm.com/servers/eserver/fact/">http://www-919.ibm.com/servers/eserver/fact/</a> <a href="http://www-912.ibm.com/e_dir/eServerPrereq.nsf">http://www-912.ibm.com/e_dir/eServerPrereq.nsf</a> <a href="http://www-1.ibm.com/servers/eserver/series/lpar/systemdesign.htm">http://www-1.ibm.com/servers/eserver/series/lpar/systemdesign.htm</a> <a href="http://www-1.ibm.com/servers/eserver/support/series/planning/installsetup.html">http://www-1.ibm.com/servers/eserver/support/series/planning/installsetup.html</a> <a href="http://publib.boulder.ibm.com/series/v5r2/ic2924/info/phyplan/rbagp.pdf">http://publib.boulder.ibm.com/series/v5r2/ic2924/info/phyplan/rbagp.pdf</a> <a href="http://www-919.ibm.com/servers/eserver/rmedia/">http://www-919.ibm.com/servers/eserver/rmedia/</a> <a href="http://www-912.ibm.com/supporthome.nsf/document/26963114">http://www-912.ibm.com/supporthome.nsf/document/26963114</a>

# iSeries URLs

Planning and Odering ---- Electronic Service Agent ---- Find & Compare Tool ---- IBM eServer Prereq ---- LPAR Validation Tool ---- Planning ---- Physical Planning Guide ---- Query Order Status ---- System Inventory Assistant	<a href="http://publib.boulder.ibm.com/isrvagt/sdsadoc.html">http://publib.boulder.ibm.com/isrvagt/sdsadoc.html</a> <a href="http://www-919.ibm.com/servers/eserver/fact/">http://www-919.ibm.com/servers/eserver/fact/</a> <a href="http://www-912.ibm.com/e_dir/eServerPrereq.nsf">http://www-912.ibm.com/e_dir/eServerPrereq.nsf</a> <a href="http://www-1.ibm.com/servers/eserver/series/lpar/systemdesign.htm">http://www-1.ibm.com/servers/eserver/series/lpar/systemdesign.htm</a> <a href="http://www-1.ibm.com/servers/eserver/support/series/planning/installsetup.html">http://www-1.ibm.com/servers/eserver/support/series/planning/installsetup.html</a> <a href="http://publib.boulder.ibm.com/series/v5r2/ic2924/info/phyplan/rbagp.pdf">http://publib.boulder.ibm.com/series/v5r2/ic2924/info/phyplan/rbagp.pdf</a> <a href="http://www-919.ibm.com/servers/eserver/rmedia/">http://www-919.ibm.com/servers/eserver/rmedia/</a> <a href="http://www-912.ibm.com/supporthome.nsf/document/26963114">http://www-912.ibm.com/supporthome.nsf/document/26963114</a>
Power Architecture	<a href="http://www-1.ibm.com/technology/power/?ca=power&amp;met=web&amp;me=powercallout">http://www-1.ibm.com/technology/power/?ca=power&amp;met=web&amp;me=powercallout</a>
Problem Management & Fixes ---- Fix Central ---- Fix Maintenance Advisor ---- iSeries Subscription Service ---- Preventive Service Planning	<a href="http://www-912.ibm.com/eserver/support/fixes/fcgui.jsp">http://www-912.ibm.com/eserver/support/fixes/fcgui.jsp</a> <a href="http://www-912.ibm.com/supporthome.nsf/document/22721158">http://www-912.ibm.com/supporthome.nsf/document/22721158</a> <a href="https://techsupport.services.ibm.com/server/series.subscriptionSvc">https://techsupport.services.ibm.com/server/series.subscriptionSvc</a> <a href="http://www-912.ibm.com/s_dir/sline003.NSF/ALLPSPBYREL">http://www-912.ibm.com/s_dir/sline003.NSF/ALLPSPBYREL</a>
Publications (IBM)	<a href="http://as400bks.rochester.ibm.com">http://as400bks.rochester.ibm.com</a>
Performance Management	<a href="http://www-1.ibm.com/servers/eserver/series/perfmgmt/">http://www-1.ibm.com/servers/eserver/series/perfmgmt/</a>
Printing Solutions for iSeries ---- AFP Font Collection ---- IBM AFP Utilities for iSeries ---- Infoprint Designer for iSeries ---- Infoprint Server for iSeries ---- PSF/400 ---- Software	<a href="http://www.printers.ibm.com/internet/wwsites.nsf/vwwebpublished/afpfonthome_m_ww">http://www.printers.ibm.com/internet/wwsites.nsf/vwwebpublished/afpfonthome_m_ww</a> <a href="http://www.printers.ibm.com/internet/wwsites.nsf/vwwebpublished/afputilhome_i_ww">http://www.printers.ibm.com/internet/wwsites.nsf/vwwebpublished/afputilhome_i_ww</a> <a href="http://www.printers.ibm.com/internet/wwsites.nsf/vwwebpublished/ipdesignerhome_i_ww">http://www.printers.ibm.com/internet/wwsites.nsf/vwwebpublished/ipdesignerhome_i_ww</a> <a href="http://www.printers.ibm.com/internet/wwsites.nsf/vwwebpublished/ipserverhome_i_ww">http://www.printers.ibm.com/internet/wwsites.nsf/vwwebpublished/ipserverhome_i_ww</a> <a href="http://www.printers.ibm.com/internet/wwsites.nsf/vwwebpublished/psfhome_i_ww">http://www.printers.ibm.com/internet/wwsites.nsf/vwwebpublished/psfhome_i_ww</a> <a href="http://www.printers.ibm.com/internet/wwsites.nsf/vwwebpublished/seriessoftware_ww">http://www.printers.ibm.com/internet/wwsites.nsf/vwwebpublished/seriessoftware_ww</a>
Professional Services	<a href="http://www.ibm.com/services/fullservice.html">http://www.ibm.com/services/fullservice.html</a>
Redbooks ---- IBM Redbooks ---- iSeries Handbook ---- iSeries Redbooks	<a href="http://www.redbooks.ibm.com">http://www.redbooks.ibm.com</a> <a href="http://www.redbooks.ibm.com/redbooks/pdfs/ga195486.pdf">http://www.redbooks.ibm.com/redbooks/pdfs/ga195486.pdf</a> <a href="http://publib-b.boulder.ibm.com/Redbooks.nsf/portals/as400">http://publib-b.boulder.ibm.com/Redbooks.nsf/portals/as400</a>

# iSeries URLs

<p>Software</p> <ul style="list-style-type: none"> <li>---- DB2</li> <li>---- Domino</li> <li>---- Editions             <ul style="list-style-type: none"> <li>---- iSeries</li> <li>---- Solution</li> </ul> </li> <li>---- iSeries Software</li> <li>---- Java Toolbox</li> <li>---- PASE</li> <li>---- Release Support</li> <li>---- WebSphere App Server</li> <li>---- WebSphere Development Studio</li> <li>---- WebSphere Dev Studio Client</li> <li>---- Wireless</li> <li>---- XML Toolkit</li> </ul>	<ul style="list-style-type: none"> <li><a href="http://www.ibm.com/servers/eserver/series/db2/">http://www.ibm.com/servers/eserver/series/db2/</a></li> <li><a href="http://www-1.ibm.com/servers/eserver/series/domino/">http://www-1.ibm.com/servers/eserver/series/domino/</a></li> <li><a href="http://www-1.ibm.com/servers/eserver/series/hardware/editions/">http://www-1.ibm.com/servers/eserver/series/hardware/editions/</a></li> <li><a href="http://www-1.ibm.com/servers/eserver/series/hardware/editions/soledition/">http://www-1.ibm.com/servers/eserver/series/hardware/editions/soledition/</a></li> <li><a href="http://www-1.ibm.com/servers/eserver/series/software/">http://www-1.ibm.com/servers/eserver/series/software/</a></li> <li><a href="http://www-1.ibm.com/servers/eserver/series/toolbox/">http://www-1.ibm.com/servers/eserver/series/toolbox/</a></li> <li><a href="http://www-1.ibm.com/servers/enable/site/porting/series/pase/">http://www-1.ibm.com/servers/enable/site/porting/series/pase/</a></li> <li><a href="http://www-912.ibm.com/supporthome.nsf/document/29853352">http://www-912.ibm.com/supporthome.nsf/document/29853352</a></li> <li><a href="http://www.ibm.com/servers/eserver/series/software/websphere/wsappserver">http://www.ibm.com/servers/eserver/series/software/websphere/wsappserver</a></li> <li><a href="http://www-306.ibm.com/software/awdtools/wds400/">http://www-306.ibm.com/software/awdtools/wds400/</a></li> <li><a href="http://www-306.ibm.com/software/awdtools/wdt400/">http://www-306.ibm.com/software/awdtools/wdt400/</a></li> <li><a href="http://www-1.ibm.com/servers/eserver/series/software/wireless/">http://www-1.ibm.com/servers/eserver/series/software/wireless/</a></li> <li><a href="http://www-1.ibm.com/servers/eserver/series/software/xml/">http://www-1.ibm.com/servers/eserver/series/software/xml/</a></li> </ul>
<p>Storage</p> <ul style="list-style-type: none"> <li>---- iSeries Storage</li> <li>---- IBM TotalStorage®</li> <li>---- Disk Storage</li> <li>---- Tape</li> <li>---- Media</li> <li>---- Services</li> </ul>	<ul style="list-style-type: none"> <li><a href="http://www-1.ibm.com/servers/eserver/series/storage/index.html">http://www-1.ibm.com/servers/eserver/series/storage/index.html</a></li> <li><a href="http://www.storage.ibm.com">http://www.storage.ibm.com</a></li> <li><a href="http://www-1.ibm.com/servers/storage/disk/index.html">http://www-1.ibm.com/servers/storage/disk/index.html</a></li> <li><a href="http://www-1.ibm.com/servers/storage/tape/index.html">http://www-1.ibm.com/servers/storage/tape/index.html</a></li> <li><a href="http://www-1.ibm.com/servers/storage/media/index.html">http://www-1.ibm.com/servers/storage/media/index.html</a></li> <li><a href="http://www-1.ibm.com/servers/storage/services/index.html">http://www-1.ibm.com/servers/storage/services/index.html</a></li> </ul>

## iSeries URLs

Support ---- Software Support Handbook ---- Support & Downloads ---- Support Phone Numbers	<a href="http://techsupport.services.ibm.com/guides/handbook.html">http://techsupport.services.ibm.com/guides/handbook.html</a> <a href="http://www.ibm.com/support/us/">http://www.ibm.com/support/us/</a> <a href="http://www.ibm.com/planetwide/us/">http://www.ibm.com/planetwide/us/</a>
TCP/IP	<a href="http://www.ibm.com/servers/eserver/series/tcpip">http://www.ibm.com/servers/eserver/series/tcpip</a>
Tools ---- iSeries Security Advisor ---- Internet Setup Wizard ---- LPAR API Toolkit ---- Software Inventory Utility	<a href="http://www.redbooks.ibm.com/tstudio/secure1/advisor/secwiz.htm">http://www.redbooks.ibm.com/tstudio/secure1/advisor/secwiz.htm</a> <a href="http://www-1.ibm.com/servers/eserver/series/tcpip/iwizard.htm">http://www-1.ibm.com/servers/eserver/series/tcpip/iwizard.htm</a> <a href="http://www-1.ibm.com/servers/eserver/series/lpar/apitoolkit.htm">http://www-1.ibm.com/servers/eserver/series/lpar/apitoolkit.htm</a> <a href="http://www-1.ibm.com/servers/eserver/series/sftsol/siu.htm">http://www-1.ibm.com/servers/eserver/series/sftsol/siu.htm</a>
Virtualization Solutions	<a href="http://www-1.ibm.com/servers/eserver/about/virtualization/index.html">http://www-1.ibm.com/servers/eserver/about/virtualization/index.html</a>
Virtual Private Networking	<a href="http://www.ibm.com/servers/eserver/series/tcpip/vpn">http://www.ibm.com/servers/eserver/series/tcpip/vpn</a>
Warranty Information ---- Machine Warranties ---- FAQ	<a href="http://www-1.ibm.com/servers/support/machine_warranties/">http://www-1.ibm.com/servers/support/machine_warranties/</a> <a href="http://www-1.ibm.com/servers/support/machine_warranties/faq.html">http://www-1.ibm.com/servers/support/machine_warranties/faq.html</a>
White Papers	<a href="http://www-1.ibm.com/servers/eserver/series/literature/reports_papers.html">http://www-1.ibm.com/servers/eserver/series/literature/reports_papers.html</a>
Windows Integration	<a href="http://www.ibm.com/servers/eserver/series/windowsintegration/">http://www.ibm.com/servers/eserver/series/windowsintegration/</a>
Workload Estimator	<a href="http://www-912.ibm.com/supporthome.nsf/document/16533356">http://www-912.ibm.com/supporthome.nsf/document/16533356</a>

## Engage technical sales support early in the sales cycle . . .

### IBMers

- **Toll-free “888” number:**
  - US & Canada --  
**1- 888-426-5525**
  - Caribbean North  
(French/English Islands) –  
**1-905-316-8375**
  - Latin America –  
**1-770-835-9700 or  
TL 445-9700**
- **Online request form (TechXpress):**  
<http://dalnotes1.dfw.ibm.com/atss/techxpress.nsf/request?OpenForm>
- **SPC Connect online form:**  
<http://w3.ibm.com/sales/support/americas/spc/connect>

### Business Partners

- **VIC - Virtual Innovation Center - IBM eServer Solutions Enablement** <http://www-1.ibm.com/servers/enable/index.html>
- **Techline** - Assists entitled Business Partners with design, sizing, configuration and proposed solutions based on IBM products and services [http://www-1.ibm.com/partnerworld/pwhome.nsf/weblook/trs\\_wgd\\_contacts.html#contact](http://www-1.ibm.com/partnerworld/pwhome.nsf/weblook/trs_wgd_contacts.html#contact)
- **Solution Providers – Tier 2** - Distributors provide additional Technical Support resources.
- **Technical Guides and Knowledge Bases**
  - **IBM eServer & TotalStorage Business Partner Technical Sales Support Resources** An electronic brochure with hotlinks to resources for selling, installing and supporting IBM and IBM TotalStorage solutions.  
<http://www.ibm.com/partnerworld/images2/eServerTotStorTechSalesSupv4-3.pdf>
  - **IBM TotalStorage Technical Support Resource Guide** An electronic guide with links to resources for selling and supporting IBM TotalStorage solutions.  
<http://www.ibm.com/partnerworld/images2/TotalStorageTechSupResGuide.pdf>
- **IBM Technical Support Knowledge Bases and eSupport**  
An eSupport guide with links to key technical knowledge bases to help you enable, implement, and support IBM and IBM TotalStorage solutions. Includes links to the latest fixes, APARs, FAQs, installation tips, service planning and more.  
<http://www.ibm.com/partnerworld/images2/eServerTotalStorageTechSupKnowBasesv1-0.pdf>



# Trademarks

The following are trademarks of the International Business Machines Corporation in the United States and/or other countries. For a complete list of IBM Trademarks, see [www.ibm.com/legal/copytrade.shtml](http://www.ibm.com/legal/copytrade.shtml): AS/400, DBE, e-business logo, ESCO, eServer, FICON, IBM, IBM Logo, iSeries, MVS, OS/390, pSeries, RS/6000, S/30, VM/ESA, VSE/ESA, Websphere, xSeries, z/OS, zSeries, z/VM

The following are trademarks or registered trademarks of other companies

Lotus, Notes, and Domino are trademarks or registered trademarks of Lotus Development Corporation  
 Java and all Java-related trademarks and logos are trademarks of Sun Microsystems, Inc., in the United States and other countries  
 LINUX is a registered trademark of Linux Torvalds  
 UNIX is a registered trademark of The Open Group in the United States and other countries.  
 Microsoft, Windows and Windows NT are registered trademarks of Microsoft Corporation.  
 SET and Secure Electronic Transaction are trademarks owned by SET Secure Electronic Transaction LLC.  
 Intel is a registered trademark of Intel Corporation  
 \* All other products may be trademarks or registered trademarks of their respective companies.

## NOTES:

Performance is in Internal Throughput Rate (ITR) ratio based on measurements and projections using standard IBM benchmarks in a controlled environment. The actual throughput that any user will experience will vary depending upon considerations such as the amount of multiprogramming in the user's job stream, the I/O configuration, the storage configuration, and the workload processed. Therefore, no assurance can be given that an individual user will achieve throughput improvements equivalent to the performance ratios stated here.

IBM hardware products are manufactured from new parts, or new and serviceable used parts. Regardless, our warranty terms apply.

All customer examples cited or described in this presentation are presented as illustrations of the manner in which some customers have used IBM products and the results they may have achieved. Actual environmental costs and performance characteristics will vary depending on individual customer configurations and conditions.

This publication was produced in the United States. IBM may not offer the products, services or features discussed in this document in other countries, and the information may be subject to change without notice. Consult your local IBM business contact for information on the product or services available in your area.

All statements regarding IBM's future direction and intent are subject to change or withdrawal without notice, and represent goals and objectives only.

Information about non-IBM products is obtained from the manufacturers of those products or their published announcements. IBM has not tested those products and cannot confirm the performance, compatibility, or any other claims related to non-IBM products. Questions on the capabilities of non-IBM products should be addressed to the suppliers of those products.

Prices subject to change without notice. Contact your IBM representative or Business Partner for the most current pricing in your geography.

References in this document to IBM products or services do not imply that IBM intends to make them available in every country.

Any proposed use of claims in this presentation outside of the United States must be reviewed by local IBM country counsel prior to such use.

The information could include technical inaccuracies or typographical errors. Changes are periodically made to the information herein; these changes will be incorporated in new editions of the publication. IBM may make improvements and/or changes in the product(s) and/or the program(s) described in this publication at any time without notice.

Any references in this information to non-IBM Web sites are provided for convenience only and do not in any manner serve as an endorsement of those Web sites. The materials at those Web sites are not part of the materials for this IBM product and use of those Web sites is at your own risk.