


Smart Cloud Analytics – Log Analysis z/OS Insight Packs Demo Assets

Pat Hayes / Aaron Young



zSCALA DEMO Assets

- Service Management Connect
<https://www.ibm.com/developerworks/servicemanagement/>
 - Client Hands on Labs
 - https://w3-connections.ibm.com/communities/service/html/communitystart?communityUuid=e0b04cd7-9ba7-4b1d-a71b-890637692a96#fullpageWidgetId=We053c13c2965_479c_b4ff_5206555d8962
 - VMWARE DEMO IMAGE / TTECGO
 - <https://rtpgsa.ibm.com/projects/z/zscala/rel1200.html>
-  New
- Service Engage Private Room / CSIDE
 - <https://www.ibm-serviceengage.com/demo-solutions>

Service Management Connect Media Gallery

IBM SmartCloud Analytics - Log Analysis for z/OS

- ▼ **IBM SmartCloud Analytics - Log Analysis for z/OS**



- Overview
- Recent Updates
- Members
- **Wiki**
- Forums
- Bookmarks
- Media Gallery
- Events

You are in: [IBM SmartCloud Analytics - Log Analysis for z/OS Community](#) > [IBM SmartCloud Analytics - Log Analysis for z/OS Wiki](#) > [Media Gallery for IBM SmartCloud Analytics - Log Analysis z/OS Insight Packs](#)

Media Gallery for IBM SmartCloud Analytics - Log Analysis z/OS Insight Packs

Like | Updated 10/11/14 by [Volkmar Siegemund](#) | Tags: None

Page Actions ▾

Click here or press control-enter to view the business card

Below is a list of SmartCloud Analytics - Log Analysis z/OS Insight Packs (SCALA z/OS) videos. Click on the appropriate link to view or download.

- [Installing the z/OS Insight Packs](#) ([Media Gallery](#)) ([YouTube](#))
- [SCALA z/OS Dashboards](#) ([Media Gallery](#)) ([YouTube](#))
- [SCALA z/OS Custom Applications](#) ([Media Gallery](#)) ([YouTube](#))
- [SCALA Diagnosing WAS for z/OS Problems with z/OS Insight Pack](#) ([Media Gallery](#)) ([YouTube](#))
- [SCALA Diagnosing DB2 for z/OS Problems with z/OS Insight Pack](#) ([Media Gallery](#)) ([YouTube](#))
- [SCALA Diagnosing CICS for z/OS Problems with z/OS Insight Pack](#) ([Media Gallery](#)) ([YouTube](#))
- [SCALA Diagnosing WebSphere MQ for z/OS Problems with z/OS Insight Pack](#) ([Media Gallery](#)) ([YouTube](#))
- [SCALA Diagnosing IMS for z/OS Problems with z/OS Insight Pack](#) ([Media Gallery](#)) ([YouTube](#))
- [SCALA Troubleshooting System z Applications](#) ([Media Gallery](#)) ([YouTube](#))
- [SCALA Using the Configuration Assistant Tool](#) ([Media Gallery](#)) ([YouTube](#))

zSCALA & OMEGAMON POT Community

1-10 of 33

Page 1 | 2 | 3 | 4

Sort by: [Shared](#) | [Name](#) | [Updated](#) ▾ | [Downloads](#) | [Comments](#) | [Likes](#)

- TDW Lab Draft- V1.pdf**

LIH M. WANG created on Nov 24
- Omaha OMEGAMON Open House Invitation 04-17-13.pdf**

LIH M. WANG created on Nov 12 | 1 download | 1 comment
- OM_POT_Survey_Eval 03-2014.doc**

LIH M. WANG created on Nov 12 | 1 download
- IBM Monitoring And Analytics - Eval - V1.pdf**

LIH M. WANG created on Nov 12 | 1 download
- zScala PoT - Lab Setup Guide.doc**

LIH M. WANG updated on Nov 10 | 107 downloads
- Training P3 - zScala PoT Intro - Nov2014 - V1.2.ppt**

LIH M. WANG created on Nov 6 | 8 downloads
- Flyer - zSCALA & Omegamon Workshop Schaumburg_12.2.pdf**

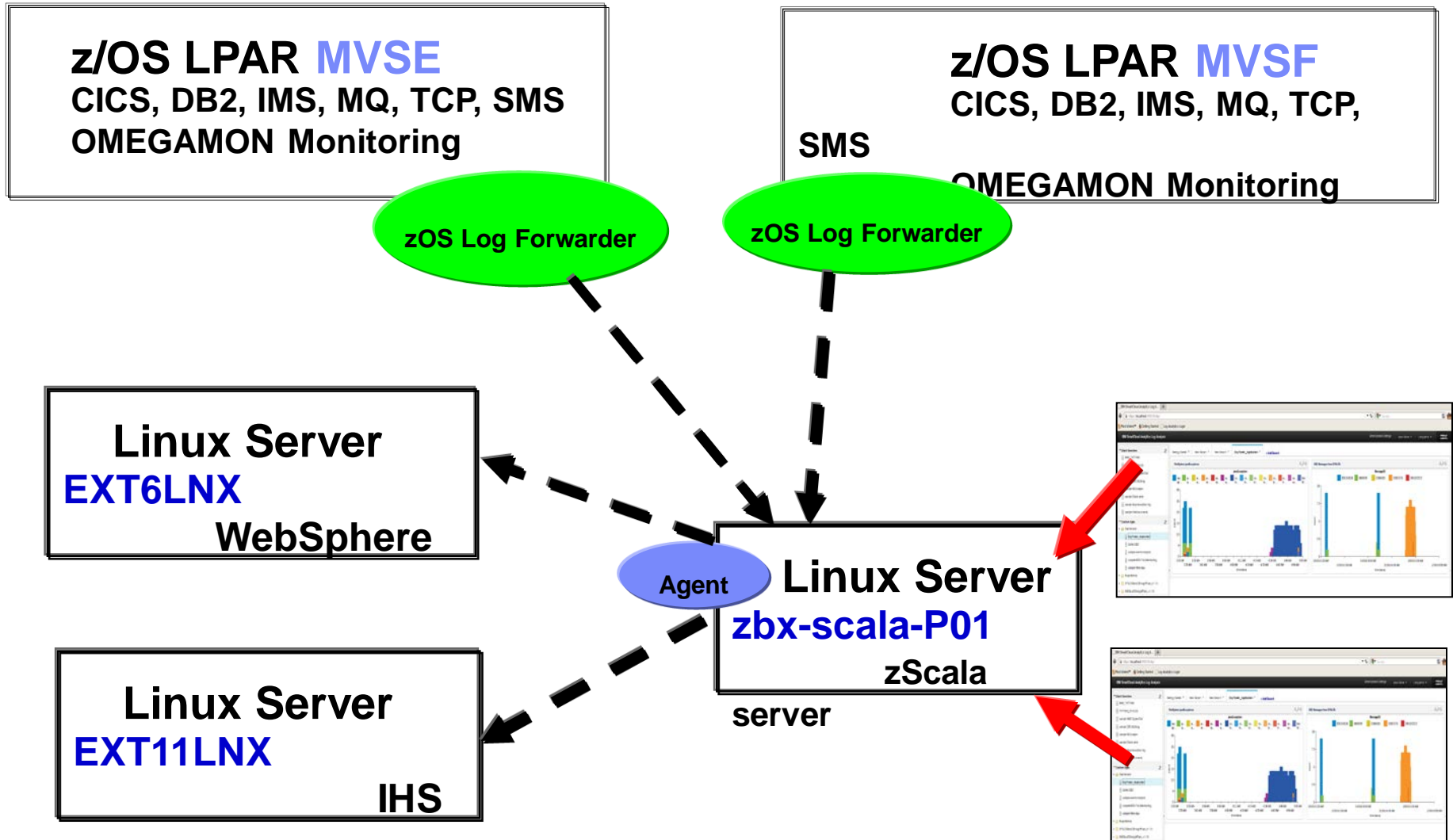
LIH M. WANG created on Oct 27 | 9 downloads
- zScala PoT - Lab Setup Guide - V2.1.doc**

LIH M. WANG created on Oct 27 | 18 downloads
- zScala PoT - Dashboard Workbook - V1.2b.pdf**

LIH M. WANG created on Oct 20 | 34 downloads | 1 comment
- zScala PoT - Usage Overview Workbook - V1.2a.pdf**

LIH M. WANG created on Oct 15 | 35 downloads | 1 comment

zScala – Lab Environment



VMWARE IMAGE / TTECGO



Log Analytics for System z

Home

[Release 1.1.0.0](#)

[Release 1.1.0.1](#)

[Release 1.2.0.0](#)

[Contact Information](#)

Related links:

- [dW public community](#)

Release 1.2.0.0 Contents

Demo image

- [Link](#) (requires VMware Player v5 or higher)

How-to videos

- [Public developerWorks community](#) | [YouTube playlist](#)

Sales Kit

- Part of the [IBM SmartCloud Analytics sales kit](#)

Presentations

- For internal use:
 - z/OS Insight Packs
 - [TTEC GO presentation](#)
 - [TTEC GO reference](#)
 - [TTEC GO event materials \(incl. recording\) in the Technical Enablement Portal](#)
 - [Use cases](#)
 - SCA-LA 1.2.0.3
 - [TTEC GO event materials \(incl. recording\) on the Technical Enablement Portal](#)
 - Collecting and sizing z/OS logs for SCALA and managing compliance
 - [TTEC event materials \(incl. recording\) on the Technical Enablement Portal](#)

IBM Service Management

Engaging the new world of service management



Contact Us

Live Chat

Service Engage Private Room Technology Demos

<https://www.ibm.serviceengage.com/demo-solutions>

IBM Service Engage

Launch Demo

Catalog Live Chat

Technology Demos

Integration Demos



IBM SmartCloud Analytics - Log Analysis z/OS - Insight Packs - SYSLOG

IBM SmartCloud Analytics – Log Analysis z/OS Insight Packs accelerates problem identification, isolation, and resolution on IBM System z. The demo of this SCALA extension features four main scenarios: (1) diagnosing problems with WebSphere Application Server and DB2 on z/OS, (2) diagnosing CICS Transaction Server problems, (3) diagnosing service problems with IMS on z/OS, and (4) diagnosing MQ on z/OS Service Distributed MQ client problems.

(CSIDE account required. For CSIDE accounts, IBMers go [here](#) and Business Partners go [here](#).)

Learn More

Launch Demo

VM is running in SKYTAP for Registered Users

The screenshot displays the IBM SmartCloud Environments dashboard. The top navigation bar includes 'Dashboard', 'Environments', 'Assets', 'Projects', 'Schedules', and 'Help'. A secondary toolbar contains 'Suspend', 'Shut Down', 'View Desktops', and 'Publish' buttons. The main content area is titled 'IBM SmartCloud Analytics - Log Analysis Demo Internal' and shows a single VM named 'zSCA-LA v120' in a 'Running' state. The VM details include 2 CPUs, 3.5 GB RAM (4 SVMs), and 25 GB storage. A network interface 'ibmscala (10.0.0.1)' is also listed. The VM's configuration table is as follows:

CPUS	STORAGE	RAM	SVMS
2	25 GB	3.52 GB	4

The interface also shows a 'Sort By: Date created' dropdown and a 'Select: All None' option. A '1 VMs' indicator and control buttons (play, pause) are visible in the top right of the VM list.

C&SI Demo Library

<http://depot.tivlab.raleigh.ibm.com/>

CSI Demo Library

CSI Demo Library

Recently Added

All Demos

Browse the Library

Demos by Category

Demos by Product

Demos by Asset Type

Notifications

Screenshots

FAQ

Related Demo Sites

- CSIDE (formerly TIDE-AG) Signup & Information
- Web Demonstrations on ibm.com
- System z Demonstration Systems
- Storage Showcase
- Tivoli Raptor Demos

RSS Feeds

- [Most recent demos from this site](#)
- [All demos from this site](#)

Latest Hosted, Simulated and VM demo additions to the library...



[Integrated Cloud Management Solution Demonstration](#): The Integrated Cloud Management Solution Demo provides a lifecycle approach to cloud services delivery and management. The demonstration takes you through about 10 different scenarios that impact cloud delivery in a customer environment.



[IBM SmartCloud Analytics - Log Analysis z/OS - Insight Packs - SYSLOG 1.2.0](#): This demo has four main scenarios: 1) Diagnosing WebSphere Application Server and DB2 on z/OS Problems, 2) Diagnosing CICS Transaction Server Problems, 3) Diagnosing IMS on z/OS Service Problems, 4) Diagnosing MQ on z/OS Service Distributed MQ Client Problems

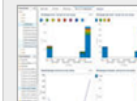


[Netcool Operations Insight for Analytics and LTE](#): The Netcool Operations Insight for Analytics and LTE demo shows how early warning of service impacting problems coupled with integrated log search capabilities gives sufficient time and information to prevent outages from ever occurring. It also features the use of the Netcool solution by a cellular provider to identify and manage the status of its network, including 4G/3G/2G devices, mobile backhaul, and traditional L2 network.

Demo news and upcoming events...

None scheduled

Latest Video demos...



[IBM SmartCloud Analytics - Log Analysis z/OS - Insight Packs - SYSLOG 1.2.0](#)



[Netcool Operations Insight for Analytics and LTE](#)



[Maximo for Transportation - 'How Things Work'](#)



[Netcool Operations Insight 1.2 and Analytics](#)



[Netcool Network Management for 4G LTE Beta](#)



[Service Assurance for Software Defined Networks](#)



[Netcool Operations Insight 1.2](#)

CSI Demo Library DEMO Documentation

CSI Demo Library

CSI Demo Library

Recently Added

All Demos

· **IBM SmartCloud Analytics - Log Analysis z/OS - Insight Packs - SYSLOG 1.2.0**

Browse the Library

Demos by Category

Demos by Product

Demos by Asset Type

Notifications

Screenshots

FAQ

IBM SmartCloud Analytics - Log Analysis z/OS - Insight Packs - SYSLOG 1.2.0

[Created by: Joseph C Frazier/Raleigh/IBM, Pat Hayes/Raleigh/IBM]

Community Feedback

Rate this demo:



This demo is currently rated 5 out of 5, based on 1 votes.

[Read comments \(0\)](#)

[Add a comment...](#)




This demo was contributed by **Joseph C Frazier/Raleigh/IBM**. Please contact Joseph if you have questions about running or using this demo.

Description



C&SI Demo Library is for CTP's and BP's
<http://depot.tivlab.raleigh.ibm.com/>
<http://tivolidemos.com/DemoLib.nsf/Welcome>

CSI Demo Library

CSI Demo Library	Latest Hosted, Simulated and VM demo additions to the library...
Recently Added	<div style="display: flex;">  <div style="margin-left: 10px;"> <p>Integrated Cloud Management Solution Demonstration delivery and management. The demonstration takes you</p> </div> </div> <div style="display: flex; margin-top: 10px;">  <div style="margin-left: 10px;"> <p>IBM SmartCloud Analytics - Log Analysis z/OS - Insights Server and DB2 on z/OS Problems, 2) Diagnosing CICS z/OS Service Distributed MQ Client Problems</p> </div> </div> <div style="display: flex; margin-top: 10px;">  <div style="margin-left: 10px;"> <p>Netcool Operations Insight for Analytics and LTE: The problems coupled with integrated log search capabilities of the Netcool solution by a cellular provider to identify network.</p> </div> </div>
All Demos	
Browse the Library	
Demos by Category	
Demos by Product	
Demos by Asset Type	
Notifications	
Screenshots	