

> Essbase® 11.1.1 for IBM i Installation Guide



For more information about SPSS® software products, please visit our Web site at <http://www.spss.com> or contact

SPSS Inc.
233 South Wacker Drive, 11th Floor
Chicago, IL 60606-6412
Tel: (312) 651-3000
Fax: (312) 651-3668

The SOFTWARE and documentation are provided with RESTRICTED RIGHTS. Use, duplication, or disclosure by the Government is subject to restrictions as set forth in subdivision (c) (1) (ii) of The Rights in Technical Data and Computer Software clause at 52.227-7013. Contractor/manufacturer is SPSS Inc., 233 South Wacker Drive, 11th Floor, Chicago, IL 60606-6412.

General notice: Other product names mentioned herein are used for identification purposes only and may be trademarks of their respective companies.

SPSS is a registered trademark.

Oracle is a registered trademark of Oracle Corporation and/or its affiliates. Other names may be trademarks of their respective owners.

IBM and WebSphere are trademarks of International Business Machines Corporation in the United States, other countries, or both.

The contents of this file are subject to the IBM Public License v. 1.0 (the "License"); you may not use this file except in compliance with the License. You may obtain a copy of the License at <http://www.opensource.org/licenses/ibmpl.php>. Software distributed under the License is distributed on an "AS IS" basis, WITHOUT WARRANTY OF ANY KIND, either express or implied. See the License for the Specific Language governing rights and limitations under the License.

Java and all Java-based trademarks and logos are trademarks of Sun Microsystems, Inc. in the United States, other countries, or both.

Microsoft, Windows, Windows NT, and the Windows logo are trademarks of Microsoft Corporation in the United States, other countries, or both.

Adobe, the Adobe logo, PostScript, and the PostScript logo are either registered trademarks or trademarks of Adobe Systems Incorporated in the United States, and/or other countries.

Essbase® 11.1.1 for IBM i Installation Guide

Copyright © 2009 by SPSS Inc.

All rights reserved.

No part of this publication may be reproduced, stored in a retrieval system, or transmitted, in any form or by any means, electronic, mechanical, photocopying, recording, or otherwise, without the prior written permission of the publisher.

Preface

Welcome to the *Essbase 11.1.1 for IBM i Installation Guide*. This preface provides the following information:

- What you'll find in this guide
- Where to find additional information
- How to contact the SPSS team to provide feedback about this guide

Adobe Acrobat (.pdf) versions of the guides are available on the SPSS Support Web site. Viewing and printing the documents requires Adobe Acrobat Reader. If necessary, you can download it at no cost from <http://www.adobe.com>. Use the Adobe Acrobat Reader online help for answers to your questions about viewing and navigating the documents.

About This Guide

Chapter 1, "Technical Support," contains contact information.

Chapter 2, "Release Overview," explains Essbase for IBM i enhancements and release notes.

Chapter 3, "Environment Requirements," contains hardware and software prerequisites.

Chapter 4, "Installing and Uninstalling Server Components," explains how to install the Essbase servers and how to uninstall server components.

Chapter 5, "Installing and Uninstalling Client Components," explains how to install and set up Essbase client components and how to uninstall client components.

Appendix A, "Upgrading to Essbase 11.1.1 for IBM i," explains how to upgrade your ShowCase Essbase 7.1 production environment to Essbase 11.1.1 for IBM i running on OS/400 V5R4 or V6R1.

Appendix B, "Migrating Essbase 11.1.1 for IBM i to a New iSeries Server," details the process of migrating an Essbase 11.1.1 for IBM i installation from one iSeries server to another iSeries server.

Appendix C, "Migrating to Web Analysis 11.1.1 for IBM i," explains how to move the content of your ShowCase Analyzer 7.2 repository into Web Analysis 11.1.1 for IBM i on Windows.

Appendix D, "Log Files," describes the log files created during installation, configuration, and usage of Essbase for IBM i.

Appendix E, "Troubleshooting," describes different ways of troubleshooting problems that may occur when you are installing and using Essbase for IBM i.

Additional Resources

- For information about product features unrelated to the installation, see the online Help in each application.

- See the documentation guides on the SPSS Support Web site at <http://support.spss.com>. To access documentation, log in to Support and set up a customized Product View for the Essbase, Analyzer (Web Analysis), and ShowCase products. Once your Product View is setup, click a product name to access documentation for that particular product.
- For the latest updates regarding Essbase 11.1.1 for IBM i, see the ReadMe at <http://support.spss.com>. After you log on to the SPSS Technical Support site, click Essbase and then Documentation.
- For information about Essbase Server maintenance, see the *Essbase for IBM i Administrator's Guide*.

Finding Documentation Online

You can view and download Essbase for IBM i documentation from the SPSS Support Web site at <http://support.spss.com>. You can also access Oracle's extensive Essbase documentation from the Oracle Web site at http://download.oracle.com/docs/cd/E12825_01/index.htm.

Customer Service

The services of SPSS Inc. Technical Support are available to maintenance customers. Customers may contact Technical Support for assistance in using SPSS Inc. products or for installation help for one of the supported hardware environments. To reach Technical Support, see the SPSS Inc. Web site at <http://www.spss.com>, or contact your local office, listed on the SPSS Inc. Web site at <http://www.spss.com/worldwide>. Be prepared to identify yourself, your organization, and the serial number of your system.

Send Us Your Comments

Your comments are important. Please let us know about your experiences with SPSS Inc. products. You can send e-mail to suggest@spss.com, or write to SPSS Inc., Attn: Director of Product Planning, 233 South Wacker Drive, 11th Floor, Chicago IL 60606-6412.

Contents

1	<i>Technical Support</i>	1
	Contacting SPSS Technical Support	1
	Technical Support Web Site	1
2	<i>Release Overview</i>	3
	New Features	3
	Server Installation	3
	Accessing Documentation	4
	Release Notes	4
3	<i>Environment Requirements</i>	5
	Server Requirements	5
	Installation Requirements	6
	Back Up Existing Libraries	6
	Configure and Start TCP/IP	6
	Client PC Software and Hardware Requirements	6
	Client Requirements	7
4	<i>Installing and Uninstalling Server Components</i>	9
	Installation Prerequisites	9
	Before You Configure	10
	Configuration Requirements	10
	Creating a Database Schema	11
	Selecting Native DB2 for Database Configuration	12
	Beginning Server Installation	12
	Configuring Server Installation	13
	About EPM System Configurator	13
	Using EPM System Configurator	14

Step-by-Step Configuration	15
Configuring a New Installation	15
Configuring a Reinstallation	43
Configuring a Maintenance Installation	43
Installation and Configuration Files	59
Installation Files	59
Provider Services	60
Administration Services	60
Analytic Services	60
Shared Services	61
Integration Services	61
Changing the Language Selected During Installation	61
Changing the Port Range Selected During Installation	62
Uninstalling Essbase Server Components	63
Deleting the Database Schema	63

5 Installing and Uninstalling Client Components 67

Before Installing Client Components	67
Installing Client Components	68
Preparing the Installation Files	68
Starting Installation	69
After Installation	69
Uninstalling Essbase Client Components	69

Appendices

A Upgrading to Essbase 11.1.1 for IBM i 71

Upgrade Overview	71
Documenting Your Upgrade	71
Common Upgrade Questions	72
Essbase 11.1.1 for IBM i Prerequisites	72
Patch Requirements	72
Server-Client Connection Compatibility	72

Establishing a Test Environment	73
Replicating Essbase 7.1 Objects in an Essbase 11.1.1 for IBM i Installation	73
Verify the Upgrade	75
<i>B Migrating Essbase 11.1.1 for IBM i to a New iSeries Server</i>	<i>77</i>
Overview	77
Prerequisites	77
Migration Options	77
<i>C Upgrading to Web Analysis 11.1.1 for IBM i</i>	<i>79</i>
Overview	79
New Features	79
Unsupported Features	79
Migrating ShowCase Analyzer 7.2 Repository to Web Analysis 11.1.1 Repository	80
Converting Analyzer 7.2 Repository Data	80
Moving Converted Data to Repository on Windows	82
<i>D Log Files</i>	<i>87</i>
Overview	87
Installation Log Files	87
Shared Services	87
Administration Services	88
Integration Services	88
Analytic Services	89
Provider Services	89
Common Components	90
Tools Log Files	91
Other Log Files	91
Configuration Log Files	91
Shared Services	91
Administration Services	93
Analytic Services	93
Provider Services	94
Application Log Files	95
Shared Services	95

Administration Services	95
Provider Services	96
Integration Services	96
Analytic Services.	96
Other Log Files.	96
Setting Log Levels.	96
EPM System Configurator	97
Shared Services	97
Administration Services.	98
Provider Services	98
Analytic Services.	98

E Troubleshooting **101**

Overview	101
Troubleshooting Installation	101
Troubleshooting Configuration	101
Troubleshooting Starting and Stopping Servers.	102
Troubleshooting Connection Failures	105
Troubleshooting Integrated Security.	107
Undeploying Server Components (Shared Services, APS, or EAS).	107

Index **109**

Technical Support

Contacting SPSS Technical Support

Internet. Submit and track the status of your questions and requests on the SPSS Technical Support Web site at <http://support.spss.com>. You can also use the site to find documentation, search resolutions, download patches, and open a case. See “Technical Support Web Site” below.

Phone, Fax, and E-Mail. To report problems or ask questions via telephone, fax, or e-mail, first visit the “Contact Us” page on the Technical Support Web Site at <http://support.spss.com/default.asp?refpage=contactus.asp>. After answering a few basic questions, you will be provided with the most current technical support phone numbers, e-mail addresses, and fax numbers for North America, Europe, and Japan/Asia Pacific. As a reminder, when you contact Technical Support, always identify yourself with your name, company, phone, and e-mail address.

Technical Support Web Site

Customers who are current on maintenance can apply for a personalized ID for the SPSS Technical Support Web site. If you do not already have an ID, access the SPSS Technical Support Web site at <http://support.spss.com> and apply for an ID. Once you log in to Support, set up a customized Product View for the Essbase, Analyzer (Web Analysis), and ShowCase products. Once your Product View is setup, click a product name to access information such as the following:

Troubleshooting. Search for a resolution, view frequently used resolutions, open a technical support case, and view the status of your cases.

Documentation. Read technical support policies, browse the technical support newsletters for technical issues, or view and download the latest product documentation.

Supported Platforms. Find supported software versions, release dates, end dates, iSeries and PC operating systems, and Web browsers.

Upgrade Info. Order an upgrade and view upgrade information pertinent to each release.

Patches. Download patches for all supported products.

My Corporate Info and My Personal Info. View your agreements, cases, and other information.

Contact Us. Find the most current technical support phone numbers, e-mail addresses, and fax numbers for North America, Europe, and Japan/Asia Pacific. You can also open a case here.

Other Links. Find information about products, training, and upcoming events.

Release Overview

Essbase 11.1.1 for IBM i is based on Oracle Essbase 11.1.1 features and functions, with iSeries-specific features and differences noted in this guide.

This chapter is an overview of Essbase enhancements and restrictions. For the latest release notes, see the *Essbase for IBM i ReadMe (essreadme.htm)*, located on the SPSS Technical Support Web site.

New Features

Essbase 11.1.1 for IBM i supports Oracle Essbase 11.1.1 features and functions with the iSeries-specific differences and exceptions noted in this guide. For a complete list of new features in version 11.1.1, see the Oracle EPM documentation at http://download.oracle.com/docs/cd/E12825_01/index.htm. For a complete list of new features introduced in the 9.x release, see the EPM documentation at http://download.oracle.com/docs/cd/E10530_01/doc/index.htm.

Server Installation

The following server components will be installed under IFS root entry and the QSYS.LIB file system specified by the name entered on the Enter lib/directory name for Essbase screen during installation. In this guide, when you are asked to enter your Essbase server library (or installation library) name, enter the name of the server library you chose during installation. The default is ESSBASE.

- **Essbase Analytic Services (OLAP).** The Analytic Services server, also known as the Essbase OLAP server, includes support for the Excel Spreadsheet Add-in, Runtime Client, and Application Program Interface (API). The Analytic Services server uses port 1423 by default.
- **Essbase Administration Services (EAS).** The configuration requires you to enter a valid OS/400 profile and password to initialize the EAS database. The Administration Services server uses port 10080 by default.
- **Essbase Integration Services (EIS).** Integration Services uses port 3388 by default.
- **Shared Services (Hyperion Foundation).** Shared Services uses port 28080 by default.
- **Provider Services (APS).** Provider Services uses port 13080 by default.

Note: The installation and configuration process has changed. Your actual time to install and configure will vary depending on your system, but you should plan on setting aside three to four hours to go through the process.

Accessing Documentation

You can view and download Essbase for IBM i documentation from the SPSS Technical Support Web site at <http://support.spss.com>. You can access Oracle Essbase documentation at http://download.oracle.com/docs/cd/E12825_01/nav/portal_1.htm.

Release Notes

For the latest release notes, see the *Essbase 11.1.1 for IBM i ReadMe (essreadme.htm)* at <http://support.spss.com>.

Environment Requirements

For upgrade information, see Appendix A on p. .

Server Requirements

The following requirements were tested and verified at the time of release:

OS/400 Operating System

- i5/OS Version 5 Release 4 (V5R4M0) or IBM i 6.1 (V6R1M0), with latest cumulative PTF package and group PTFs located at http://www-912.ibm.com/s_dir/slkbase.nsf/recommendedfixes.

Installed Licensed Program Products (LPPs)

Note: The numbers below may differ in V6R1M0

- 5722JV1 Base: IBM Developer Kit for Java
- 5722JV1 Option 7: Java Developer Kit 5.0
- 5722JV1 Option 8: J2SE 5.0 32-bit
- 5722JC1 Base: IBM Toolbox for Java
- 5722SS1 Option 30: Qshell
- 5722SS1 Option 33: Portable App Solutions Environment (PASE)
- 5733W61 Base: WebSphere Application Server V6.1 for i5/OS (or option 1 below)
- 5733W61 Option 1: WebSphere Application Server V6.1 Express (or the base option above)

Hardware

- 3 GB RAM minimum.
- DVD-ROM drive required for installation if you use physical media to install your release.
- Minimum 8 GB disk space for installation, 2 GB after installation.
- Additional disk space the size of your Essbase databases.

Other

- TCP/IP should be configured and started on the iSeries.
- The system value QALWOBJRST must be set to *ALL or *ALWPGMADP. You can display the value with the DSPSYSVAL QALWOBJRST command.

- The system value QFRCCVNRST must be set to 1 for the duration of the installation process. You can display the value with the DSPSYSVAL QFRCCVNRST command.
- The *PUBLIC user group must have *RWX permissions on the root level (/) of the IFS.
- IBM Directory Server should be configured and running.
- DRDA (DDM) services should be running.
- HTTP servers should be running.
- Upgrade is supported from version 7.1. See *Upgrading to Essbase 11.1.1 for IBM i* on p. for more information.
- To run the server components, you may need specific iSeries PTFs. See http://www-912.ibm.com/s_dir/slkbases/recommendedfixes for the latest levels.

Installation Requirements

The following tasks should be performed before installation.

Back Up Existing Libraries

You must install the Essbase for IBM i servers into a library separate from your Warehouse Manager Server and any existing Essbase library. *Warning:* The installation of Essbase for IBM i is not supported over the top of ShowCase Essbase 7.1.

Always back up your library before installation. Although the servers will not install over existing server libraries, we recommend backing up your library to guard against installation failure. For instructions, see the *Essbase for IBM i Administrator's Guide*.

Configure and Start TCP/IP

Configure and start the iSeries TCP/IP before installing the servers. Someone trained in TCP/IP network administration should ensure proper configuration, use, and maintenance of TCP/IP. For more information on configuring TCP/IP, see the *ShowCase Suite Administrator's Guide*. Also see the TCP/IP documentation provided by IBM.

Client PC Software and Hardware Requirements

For more information on the requirements in the following table, see Chapter 3 in the EPM 11.1.1 System Installation Start Here guide at http://download.oracle.com/docs/cd/E12825_01/epm.111/epm_install_start_here.pdf.

Client Requirements

Table 3-1
Client requirements

Operating system	One of the following Microsoft operating systems: Windows Vista (except Home edition), Windows XP Professional SP2, or Windows Server 2003 SP1 (R2 also supported).
Microprocessor	x86-32 processor, 1.6 GHz or higher (Windows 2003 SP1 also supports x86-64).
RAM	1 GB of RAM recommended for all clients.
Hard disk space	Minimum 8 GB disk space for installation, 2 GB after installation.
Screen resolution	All clients are optimized for a minimum screen resolution of 1024 x 768.
Excel version	MS Office Excel XP (2002), 2003, or 2007.
Java Runtime Environment (JRE)	JRE 1.5.0 Update 12. <i>Note:</i> JRE is installed automatically with the products that require it.
Web browser	MS Internet Explorer 6.0–7.0.x or Mozilla Firefox 2.0.x. Set your browser to enable JavaScript and cookies. Storing cookies on your computer is recommended; at a minimum, allow per-session (not stored) cookies.
Web browser JRE plug-in	JRE 1.5.0_12 to 1.5.0_12+.
Network protocol	For the Essbase Spreadsheet Add-in, configure a Windows socket-compliant TCP/IP connection between your client PC and your Essbase server. For information, see the <i>Essbase for IBM i Administrator's Guide</i> .
Acrobat Reader	Adobe Acrobat Reader 6.0 or later.
Other	DVD-ROM drive (or network access to a DVD-ROM drive).

Installing and Uninstalling Server Components

The following server components will be installed under IFS root entry and the QSYS.LIB file system specified by the name entered on the Enter lib/directory name for Essbase screen during installation. In this guide, when you are asked to enter your Essbase server library (or installation library) name, enter the name of the server library you chose during installation. The default is `ESSBASE`.

- **Essbase Analytic Services (OLAP).** The Analytic Services server, also known as the Essbase OLAP server, includes support for the Excel Spreadsheet Add-in, Runtime Client, and Application Program Interface (API). The Analytic Services server uses port 1423 by default.
- **Essbase Administration Services (EAS).** The configuration requires you to enter a valid OS/400 profile and password to initialize the EAS database. The Administration Services server uses port 10080 by default.
- **Essbase Integration Services (EIS).** Integration Services uses port 3388 by default.
- **Shared Services (Hyperion Foundation).** Shared Services uses port 28080 by default.
- **Provider Services (APS).** Provider Services uses port 13080 by default.

Installation Prerequisites

Note the following installation prerequisites.

- First, see Chapter 3 to ensure your system meets the environment prerequisites. The `*PUBLIC` user group must have `*RWX` permissions on the root level (`/`) of the IFS.
- If you are performing a new installation, the `${USER_HOME}` directory must exist. If it does not, create it before proceeding further. The Display User Profile command (`DSPUSRPRF`) can be used to determine user profile's home directory. The `WRKLNK` command can be used to determine whether the directory exists or not.
- If you are applying the maintenance release to move from EPM System release 11.1.1 or 11.1.1.1 to EPM System release 11.1.1.2, or if you are reinstalling EPM System products, you must first stop all the services for EPM System products.

About EPM System Installer

Every time the installer is launched, it checks for the following files in the `${USER_HOME}` directory.

- `.hyperion.${HOSTNAME}`

- `.oracle.${HOSTNAME}.products`
 - `set_hyphome_${HOSTNAME}_1.sh`
1. If none of the above files is present in the `${USER_HOME}` directory, then the installer automatically sets the installation type to **New Installation**. This installation type performs a fresh installation.
 2. If the files listed above are present in the `${USER_HOME}` directory, then the installer reads the installation version from `.oracle.${HOSTNAME}.products` file and takes one of the following actions:
 - ▶ If the installation version is 11.1.1.1.0, then the installer automatically sets the installation type to **Maintenance Installation**. This installation type applies the localization changes to an existing installation. It also preserves the configuration information (for example, port details, profile name, and so on) of the previous installation.

Database configurations are preserved during a maintenance installation. You do not need to reconfigure the databases or common settings again, but the servers need to be redeployed and an Essbase server custom configuration needs to redone.

- ▶ If the installation version is 11.1.1.2.0, then the installer automatically sets the installation type to **Reinstallation**. This installation type reinstalls the server files to an existing installation just like a new installation, but it preserves the configuration information (for example, port details, profile name, and so on) of the previous installation.

The database schema used for configuration is not affected during a reinstallation. The schema can also be reused for database configuration after reinstalling.

Note: `${USER_HOME}` is the user's home directory and `${HOSTNAME}` is the host name of the iSeries machine. The host name can be obtained by executing the `hostname` command in Qshell or the PASE shell.

Installation Log Files

Check the log files if you have any problems installing the server software. The installation log files are located in `/<esslib>/hyperion/logs/install/`. There is a log file for each assembly, named `<product>-install.log`; for example, `hss-install.log`. For more information, see the topic "Installation Log Files" in Appendix D on p. 87.

Before You Configure

Configuration Requirements

The following system requirements should be met before starting the configuration.

- Use the same user profile for installation and configuration.
- TCP/IP should be configured and started on the iSeries.
- The system value `QALWOBJRST` must be set to `*ALL` or `*ALWPGMADP`. You can display the value with the `DSPSYSVAL QALWOBJRST` command.

- The system value QFRCCVNRST must be set to 1 for the duration of the installation process. You can display the value with the DSPSYSVAL QFRCCVNRST command.
- IBM Directory Server should be configured and running.
- DRDA (DDM) services should be running.
- HTTP servers should be running.
- Create a valid OS/400 database schema. See below for more information.
- For multiple configurations, start all of the servers of all previous configurations (the Shared Services server, EAS server, APS server, Essbase Analytic Server, and EIS server).

Creating a Database Schema

Shared Services and EAS configuration require a valid OS/400 database schema. If a new installation is being performed, a database schema needs to be created. This schema should be created before configuration and the schema name you specify must be different than the Essbase library name. The username and password used to create the schema should be known for the configuration.

Note: You can use a previously used schema for a new installation. You will be prompted to “re-use” or “drop and re-create” the schema tables while doing the database configuration of the EAS server.

In order to create a schema, follow one of the procedures below:

Important! The username and password specified during database configuration are stored internally by products (Shared Services and EAS) in encrypted format. For schema creation, we recommend a user who is **not under any password expiration policy** (for example, the password needs to be changed every 60 days). If the password is changed for the user, products will not be able to access the database (because the database uses the old password, which was specified during database configuration and is now invalid). For this scenario, you might have to redo the database configuration.

To create a database schema (option 1):

1. Open iSeries Navigator.
2. Expand the My Connections node on the left.
3. Under My Connections, expand the appropriate server.
4. Expand the Databases node under the server node.
5. Select Schemas and under the Database Tasks section at bottom, click the Run an SQL script link.
6. Type the following command in the text area: `create schema <schema_name>` and choose the Run option from the menu bar. (For example, `create schema EssbaseDB`). *Note:* The schema name you specify must be different than the Essbase library name.

The schema name that you specified will get created.

To create a database schema (option 2):

1. Start a new iSeries session.
2. Type STRSQL at the main screen of iSeries Emulator and press Enter.
3. Type the following command to create a new schema: `create schema <schema_name>` and press Enter. (For example, `create schema EssbaseDB`). *Note:* The schema name you specify must be different than the Essbase library name.

The schema name that you specified will get created.

To create an IASP (independent auxiliary storage pool):

Visit <https://publib.boulder.ibm.com/infocenter/series/v5r4/index.jsp?topic=/sqlp/rbafyiasp.htm> for more information.

Selecting Native DB2 for Database Configuration

The Essbase for IBM i installation and configuration user profile requires a CCSID other than 65535. For native DB2 database configurations on iSeries machines whose locale is *not* en_US, the CCSID of the user profile should be changed from the default value (*SYSVAL or 65535) to the appropriate CCSID based on the language. The JDBC driver (`com.ibm.db2.jdbc.app.DB2Driver`) for a native DB2 is unable to process data characters for the default CCSID. For more information, see IBM.com (http://www-912.ibm.com/s_dir/slkbase.NSF/0/9ea41ee0c6099d1e86256caa006e4b59?OpenDocument).

You can change your CCSID in one of two ways:

- ▶ Change the CCSID at the system level:
 - Change the system value QCCSID.
 - Change the user profile to have a CCSID of *SYSVAL.
- ▶ Change the CCSID at the user profile level.

Please refer to your IBM documentation (<http://publib.boulder.ibm.com/infocenter/series/v5r4/index.jsp?topic=/nls/rbagsccsidref.htm>) for detailed information on the options above.

Beginning Server Installation

1. Load the Essbase and Web Analysis for IBM i DVD (Disk 1 of 2) into the iSeries DVD drive.
2. Log on with *SECOFR or equivalent authority (*ALLOBJ, *IOSYSCFG, *SAVSYS, *JOBCTL, and *SECADM special authorities are needed). The profile must be a permanent profile that does not belong to any groups or supplemental groups. If it is removed from the system, you may have to reinstall the server.
3. Restore the files from the DVD:

```
RST DEV('/QSYS.LIB/OPT01.DEVD') OBJ((' /SPSSInc-Essbase11' *INCLUDE
*SAME)) SUBTREE(*ALL) OPTFILE('/SPS_0001').
```

4. Type `STRQSH` and press Enter to start the Qshell.
5. Type `installTool.sh -console` and press Enter from the resulting directory where the files are restored to run the installation. This should be done in Qshell from the `/SPSSInc-Essbase11` directory in the example above.

In order to restore the files to a different directory, the command above may be altered as follows: `RST DEV('/QSYS.LIB/OPT01.DEVD') OBJ((' /SPSSInc-Essbase11' *INCLUDE '/Alternate_Target_Dir')) SUBTREE(*ALL) OPTFILE('/SPS_0001')` where `/Alternate_Target_Dir` is an alternative location for the files to be placed (other than `/SPSSInc-Essbase11`). This operation may take several minutes to perform.

6. Enter 1 for Next.
7. If the `.hyperion.${HOSTNAME}` file is *not* present in the `/${USER_HOME}` directory, then the installer will ask to specify the location in which the Essbase server components need to be installed. The default library name is `ESSBASE`. The root IFS path used for the installation is based on the specified library name (the default is `/ESSBASE`). The maximum characters in the library name is 10. If the `.hyperion.${HOSTNAME}` file is present in the `/${USER_HOME}` directory, then the installer will automatically set the install location from that file without prompting the user.
8. Enter 2 for Next.
9. The installer will detect the type of installation (New Installation, Reinstallation, or Maintenance Installation) and will display it on screen. Enter 0 for Hyperion EPM System.
10. Enter 2 for Next. The installation begins. The installation may require 30 minutes or more.
11. Press `F6` to print the scroller. This will create a spool file with all of the information displayed in the screens above, providing you with a record of the options selected during the installation of your Essbase server.
12. Enter 0 to configure Hyperion EPM System or enter 2 to finish installation.

Configuring Server Installation

EPM System Configurator provides a streamlined and simplified approach to product configuration. By storing and reusing information from the Shared Services Registry, there is less data entry required, and in most cases you can use default values.

About EPM System Configurator

EPM System Configurator is installed with the first EPM System product installed on an IBM i and is used to configure all products installed on the IBM i. Use EPM System Configurator on each IBM i on which EPM System products are installed. EPM System Configurator provides these tasks for configuration and reconfiguration of EPM System products. Not all tasks are required for all products.

- “Configure Database” for Shared Services—the database that you configure for Shared Services, which holds the Oracle’s Hyperion Shared Services Registry.
- “Common Settings”—EPM System Configurator displays the Common Settings page once on each machine you configure.
- “Configure Product Options”—Select the product features that you are authorized to use.
- “Configure Database” for products—To store and retrieve application data in a database.
- “Deploy to Application Server”—To deploy the application to a Web application server.
- Product-specific configuration tasks for products that require it.

Note: EPM System Configurator also registers products with Shared Services during configuration. You do not need to select this task; all products that require it are automatically registered. For complete details about the configuration process, see Chapter 3, “Configuring EPM System Products,” in the *Oracle Hyperion Enterprise Performance Management System Installation and Configuration Guide*, available at http://download.oracle.com/docs/cd/E12825_01/nav/portal_1.htm.

Using EPM System Configurator

Run EPM System Configurator on each IBM i hosting the products to configure or reconfigure, and run as a user with *SECOFR (or equivalent authority). A general overview of the configuration process appears below. For specific instructions, see “Step-by-Step Configuration” on p. 15.

To configure EPM System products:

1. Choose a method to launch EPM System Configurator:
 - On the last page of EPM System Installer, select the Configure option and press Enter.
 - Using Qshell, enter `configtool.sh -console` from `/<esslib>/hyperion/common/config/9.5.0.0`, where `<esslib>` is the name of the Essbase installation library and `9.5.0.0` is the current version number of the component.
2. Review and complete each page of EPM System Configurator, selecting Next to move to the next page.
3. Confirm the configuration tasks to complete, and then select Next. EPM System Configurator displays the status of the configuration process. Configuration time depends on the products and tasks that you selected. Progress is recorded in `/<esslib>/hyperion/logs/config/configtool.log`. When configuration finishes, the status of each task is displayed. Configuration results are noted in `/<esslib>/hyperion/logs/config/configtool_summary.log`.
4. Select the Product Selection Panel option to return to the Product Selection page to complete additional configuration tasks.
5. Select Finish. If configuration is successful, perform any required post-configuration tasks. See Chapter 6, “Performing Post-Configuration Tasks,” in the *Oracle Hyperion Enterprise Performance Management System Installation and Configuration Guide*, available at http://download.oracle.com/docs/cd/E12825_01/nav/portal_1.htm.

Terminating configuration for a particular product does not terminate the entire process. Configuration continues for the other products. EPM System Configurator displays error messages on a summary page after the configuration process completes. If errors display, perform these tasks:

- Review the log files. For more information, see the topic “Configuration Log Files” in Appendix D on p. 91.
- Review the troubleshooting appendix in this guide. For more information, see the topic “Troubleshooting Configuration” in Appendix E on p. 101.
- See the *Oracle Hyperion Enterprise Performance Management System Installation and Configuration Troubleshooting Guide* (http://download.oracle.com/docs/cd/E12825_01/nav/portal_1.htm) for information about resolving configuration issues.

Note: After a successful configuration, the following servers are automatically started (if configured):

- Shared Services server
- Essbase Administration Services server
- Analytic Provider Services server

To verify whether any server is started or stopped, see “Verifying Server Status” in Chapter 2 of the *Essbase 11.1.1 for IBM i Administrator’s Guide*. To start any server that is already stopped, refer to “Starting and Stopping the Servers” in Chapter 2 of the *Essbase 11.1.1 for IBM i Administrator’s Guide*.

Step-by-Step Configuration

Follow the steps below to configure your Essbase 11.1.1 for IBM i server installation.

Configuring a New Installation

Choose a method to launch EPM System Configurator:

- ▶ On the last page of EPM System Installer, select the Configure option and press Enter.
- ▶ Using Qshell, enter `configtool.sh -console` from `/<esslib>/hyperion/common/config/9.5.0.0`, where `<esslib>` is the name of the Essbase installation library and `9.5.0.0` is the current version number of the component.

Once launched, EPM System Configurator displays introductory text.

- ▶ Enter `q` to skip the introductory text and continue with the configuration.

Figure 4-1
EPM System Configurator introductory text

```

QSH Command Entry

This software and related documentation are provided under a license agreement
containing restrictions on use and disclosure and are protected by intellectual
property laws. Except as expressly permitted in your license agreement or
allowed by law, you may not use, copy, reproduce, translate, broadcast, modify,
license, transmit, distribute, exhibit, perform, publish or display any part,
in any form, or by any means. Reverse engineering, disassembly, or
decompilation of this software, unless required by law for interoperability,
is

Press ENTER to read the text [Type q to quit]

==> q_

F3=Exit  F6=Print  F9=Retrieve  F12=Disconnect
F13=Clear F17=Top  F18=Bottom  F21=CL command entry

```

- ▶ Enter 1 to proceed to the next step.

Figure 4-2
Enter 1 to proceed to the next step

```

QSH Command Entry

al
property laws. Except as expressly permitted in your license agreement or
allowed by law, you may not use, copy, reproduce, translate, broadcast, modify,
license, transmit, distribute, exhibit, perform, publish or display any part,
in any form, or by any means. Reverse engineering, disassembly, or
decompilation of this software, unless required by law for interoperability,
is

Press ENTER to read the text [Type q to quit]
> q

Press 1 for Next, 3 to Cancel or 5 to Redisplay [1]

==> 1_

F3=Exit  F6=Print  F9=Retrieve  F12=Disconnect
F13=Clear F17=Top  F18=Bottom  F21=CL command entry

```

- ▶ Enter 0 to confirm your selections.

Figure 4-3
Enter 0 to confirm your selections

```

QSH Command Entry

Press 1 for Next, 3 to Cancel or 5 to Redisplay [1]
> 1

-----
--
Select the products to configure:

[X] 1 - (Pending) Hyperion Foundation
[X] 2 - (Pending) [Essbase] Provider Services
[X] 3 - (Pending) [Essbase] Essbase Administration Services
[X] 4 - (Pending) [Essbase] Essbase Services

To select an item enter its number, or 0 when you are finished: [0]

===> 0

-----
F3=Exit F6=Print F9=Retrieve F12=Disconnect
F13=Clear F17=Top F18=Bottom F21=CL command entry

```

- ▶ Enter 1 to proceed to the next step.

Figure 4-4
Enter 1 to proceed to the next step

```

QSH Command Entry

-----
--
Select the products to configure:

[X] 1 - (Pending) Hyperion Foundation
[X] 2 - (Pending) [Essbase] Provider Services
[X] 3 - (Pending) [Essbase] Essbase Administration Services
[X] 4 - (Pending) [Essbase] Essbase Services

To select an item enter its number, or 0 when you are finished: [0]
> 0

Press 1 for Next, 2 for Previous, 3 to Cancel or 5 to Redisplay [1]

===> 1

-----
F3=Exit F6=Print F9=Retrieve F12=Disconnect
F13=Clear F17=Top F18=Bottom F21=CL command entry

```

- ▶ Enter 0 to confirm the selection for Provider Services.

Figure 4-5
Enter 0 to confirm the selection for Provider Services

```

QSH Command Entry

> 1

-----
--
Select the configuration tasks for the products you selected on the previous
screen:

Provider Services

[X] 1 - (Pending) Deploy to Application Server

To select an item enter its number, or 0 when you are finished: [0]

==> 0_
-----
-----
F3=Exit  F6=Print F9=Retrieve F12=Disconnect
F13=Clear F17=Top  F18=Bottom  F21=CL command entry

```

- ▶ Enter 0 to confirm the selections for Essbase Administration Services.

Figure 4-6
Enter 0 to confirm the selection for Essbase Administration Services

```

QSH Command Entry

Provider Services

[X] 1 - (Pending) Deploy to Application Server

To select an item enter its number, or 0 when you are finished: [0]
> 0

Essbase Administration Services

[X] 1 - (Pending) Configure Database
[X] 2 - (Pending) Deploy to Application Server

To select an item enter its number, or 0 when you are finished: [0]

==> 0_
-----
-----
F3=Exit  F6=Print F9=Retrieve F12=Disconnect
F13=Clear F17=Top  F18=Bottom  F21=CL command entry

```

- ▶ Enter 0 to confirm the selection for Essbase Services.

Figure 4-7
Enter 0 to confirm the selection for Essbase Services

```

QSH Command Entry

Essbase Administration Services

[X] 1 - (Pending) Configure Database
[X] 2 - (Pending) Deploy to Application Server

To select an item enter its number, or 0 when you are finished: [0]
> 0

Essbase Services

[X] 1 - (Pending) Essbase Custom Configuration

To select an item enter its number, or 0 when you are finished: [0]

===> 0_

F3=Exit F6=Print F9=Retrieve F12=Disconnect
F13=Clear F17=Top F18=Bottom F21=CL command entry

```

- ▶ Enter 0 to confirm the selections for Hyperion Foundation.

Figure 4-8
Enter 0 to confirm the selections for Hyperion Foundation

```

QSH Command Entry

[X] 1 - (Pending) Essbase Custom Configuration

To select an item enter its number, or 0 when you are finished: [0]
> 0

Hyperion Foundation

[X] 1 - (Pending) Configure Database
[X] 2 - (Pending) Common Settings
[X] 3 - (Pending) Deploy to Application Server

To select an item enter its number, or 0 when you are finished: [0]

===> 0_

F3=Exit F6=Print F9=Retrieve F12=Disconnect
F13=Clear F17=Top F18=Bottom F21=CL command entry

```

- ▶ Enter 1 to proceed to the next step.

Figure 4-9
Enter 1 to proceed to the next step

```

QSH Command Entry

> 0

Hyperion Foundation

[X] 1 - (Pending) Configure Database
[X] 2 - (Pending) Common Settings
[X] 3 - (Pending) Deploy to Application Server

To select an item enter its number, or 0 when you are finished: [0]
> 0

Press 1 for Next, 2 for Previous, 3 to Cancel or 5 to Redisplay [1]

===> 1_

-----
F3=Exit  F6=Print  F9=Retrieve  F12=Disconnect
F13=Clear F17=Top  F18=Bottom  F21=CL command entry

```

- ▶ Enter 1 to configure the database for Shared Services for the first time.

Figure 4-10
Enter 1 to configure the database for Shared Services for the first time

```

QSH Command Entry

To select an item enter its number, or 0 when you are finished: [0]
> 0

Press 1 for Next, 2 for Previous, 3 to Cancel or 5 to Redisplay [1]
> 1

-----
--
Shared Services and Registry Database Configuration:
0 - Connect to a previously configured Shared Services database
1 - Perform 1st-time configuration of Shared Services database
Your choice[1]:

===> 1_

-----
F3=Exit  F6=Print  F9=Retrieve  F12=Disconnect
F13=Clear F17=Top  F18=Bottom  F21=CL command entry

```

- ▶ Enter 3 to select iSeries DB2 as your database type.

Figure 4-11
Enter 3 to select iSeries DB2 as your database type

```

QSH Command Entry

-----
--
Shared Services and Registry Database Configuration:
0 - Connect to a previously configured Shared Services database
1 - Perform 1st-time configuration of Shared Services database
Your choice[1]:
> 1
Database connection information:
Database Type:
0 - Microsoft SQL Server
1 - Oracle
2 - IBM DB2
3 - iSeries DB2
Your choice:

===> 3
-----
F3=Exit F6=Print F9=Retrieve F12=Disconnect
F13=Clear F17=Top F18=Bottom F21=CL command entry

```

- ▶ Enter the hostname of the iSeries server where the Shared Services database should be created (for example, VELMA).

Figure 4-12
Enter the hostname of the iSeries server where the Shared Services database should be created

```

QSH Command Entry

0 - Connect to a previously configured Shared Services database
1 - Perform 1st-time configuration of Shared Services database
Your choice[1]:
> 1
Database connection information:
Database Type:
0 - Microsoft SQL Server
1 - Oracle
2 - IBM DB2
3 - iSeries DB2
Your choice:
> 3
Enter Database Server Name:
[VELMA]:

===>
-----
F3=Exit F6=Print F9=Retrieve F12=Disconnect
F13=Clear F17=Top F18=Bottom F21=CL command entry

```

- ▶ Enter the name of the database or IASP in which you created the schema for the database configuration of Shared Services (enter *LOCAL if you created the schema on the default database.) For more information, see the topic “Creating a Database Schema” on p. 11.

Figure 4-13

Enter the name of the database or IASP in which you created the schema for the database configuration of Shared Services

```

QSH Command Entry

>
Database connection information:
Database Type:
0 - Microsoft SQL Server
1 - Oracle
2 - IBM DB2
3 - iSeries DB2
Your choice:
> 3
Enter Database Server Name:
[VELMA]:
> VELMA
Enter Database or IASP Name:
[*LOCAL]:

===> *LOCAL_

F3=Exit F6=Print F9=Retrieve F12=Disconnect
F13=Clear F17=Top F18=Bottom F21=CL command entry

```

- ▶ Enter the name of the database schema created earlier (for example, HIT51DB). For more information, see the topic “Creating a Database Schema” on p. 11.

Figure 4-14

Enter the name of the database schema created earlier

```

QSH Command Entry

0 - Microsoft SQL Server
1 - Oracle
2 - IBM DB2
3 - iSeries DB2
Your choice:
> 3
Enter Database Server Name:
[VELMA]:
> VELMA
Enter Database or IASP Name:
[*LOCAL]:
> *LOCAL
Enter Name of Schema
[HIT]:

===> HIT51DB_

F3=Exit F6=Print F9=Retrieve F12=Disconnect
F13=Clear F17=Top F18=Bottom F21=CL command entry

```

- ▶ Enter the username used to create the database schema.

Figure 4-15
Enter the username used to create the database schema

```
QSH Command Entry

3 - iSeries DB2
Your choice:
> 3
Enter Database Server Name:
[VELMA]:
> VELMA
Enter Database or IASP Name:
[*LOCAL]:
> *LOCAL
Enter Name of Schema
[HIT]:
> HIT51DB
Enter Username:
:

===> AJAIN

F3=Exit F6=Print F9=Retrieve F12=Disconnect
F13=Clear F17=Top F18=Bottom F21=CL command entry
```

- ▶ Enter the password used to create the database schema.

Figure 4-16
Enter the password used to create the database schema

```
QSH Command Entry

Enter Database Server Name:
[VELMA]:
> VELMA
Enter Database or IASP Name:
[*LOCAL]:
> *LOCAL
Enter Name of Schema
[HIT]:
> HIT51DB
Enter Username:
:
> AJAIN
Enter Password:
:

===> ARPITJ

F3=Exit F6=Print F9=Retrieve F12=Disconnect
F13=Clear F17=Top F18=Bottom F21=CL command entry
```

- ▶ Enter the LDAP port number. The default is 28089. *Note:* All port numbers must be unique and not in use by another application.

Figure 4-17
Enter the LDAP port number

```
QSH Command Entry

Database or IASP Name:
:
> *LOCAL
Schema Name:
:
> HIT51DB
Username:
:
> AJAIN
Password:
:
> ARPITJ
LDAPPort
:

===> 55001_

F3=Exit F6=Print F9=Retrieve F12=Disconnect
F13=Clear F17=Top F18=Bottom F21=CL command entry
```

- ▶ Enter 1 to skip advanced options.

Figure 4-18
Enter 1 to skip advanced options

```
QSH Command Entry

> *LOCAL
Enter Name of Schema
[HIT]:
> HIT51DB
Enter Username:
:
> AJAIN
Enter Password:
:
> ARPITJ
LDAPPort
[28089]:
> 55001
Launch Advanced Options?0:Yes, 1:No [1]:

===> 1_

F3=Exit F6=Print F9=Retrieve F12=Disconnect
F13=Clear F17=Top F18=Bottom F21=CL command entry
```

- ▶ Enter 1 to proceed to the next step.

Figure 4-19
Enter 1 to proceed to the next step

```

QSH Command Entry

> HIT51DB
  Enter Username:
  :
> AJAIN
  Enter Password:
  :
> ARPITJ
  LDAPPort
  [28089]:
> 55001
  Launch Advanced Options?0:Yes, 1:No [1]:
> 1

  Press 1 for Next, 2 for Previous, 3 to Cancel or 5 to Redisplay [1]

===> 1_

F3=Exit  F6=Print  F9=Retrieve  F12=Disconnect
F13=Clear F17=Top  F18=Bottom  F21=CL command entry

```

- ▶ Enter 1 to disable SSL for Web Applications or enter 0 to enable SSL for Web Applications.

Figure 4-20
Enter 1 to disable SSL for Web Applications or enter 0 to enable SSL for Web Applications

```

QSH Command Entry

[28089]:
> 55001
  Launch Advanced Options?0:Yes, 1:No [1]:
> 1

  Press 1 for Next, 2 for Previous, 3 to Cancel or 5 to Redisplay [1]
> 1
  Attaching Java program to ../../CSS/9.5.0.0/lib/css-9_5_0.jar.

-----
--
EPM system common settings:

  Enable SSL for Web applications ? 0:Yes, 1:No [1]:

===> 1_

F3=Exit  F6=Print  F9=Retrieve  F12=Disconnect
F13=Clear F17=Top  F18=Bottom  F21=CL command entry

```

- ▶ Press Enter to continue (without entering an SMTP Mail Server name). *Note:* EAS, Web Analysis, and Shared Services reports can use the SMTP mail server to send notifications. You cannot update this setting manually after the configuration; if you want to change it, you must run the configuration again.

Figure 4-21

Press Enter to continue (without entering an SMTP Mail Server name)

```

QSH Command Entry

> 1

Press 1 for Next, 2 for Previous, 3 to Cancel or 5 to Redisplay [1]
> 1
Attaching Java program to ../../CSS/9.5.0.0/lib/css-9_5_0.jar.

-----
--
EPM system common settings:

Enable SSL for Web applications ? 0:Yes, 1:No [1]:
> 1
Enter SMTP Mail Server name
[]:

===> _

-----
F3=Exit F6=Print F9=Retrieve F12=Disconnect
F13=Clear F17=Top F18=Bottom F21=CL command entry

```

- ▶ Enter 1 to disable SMTP server authentication.

Figure 4-22

Enter 1 to disable SMTP server authentication

```

QSH Command Entry

Attaching Java program to ../../CSS/9.5.0.0/lib/css-9_5_0.jar.

-----
--
EPM system common settings:

Enable SSL for Web applications ? 0:Yes, 1:No [1]:
> 1
Enter SMTP Mail Server name
[]:

>
(The server should accept anonymous connections)

SMTP server requires authentication ? 0:Yes, 1:No [1]:

===> 1_

-----
F3=Exit F6=Print F9=Retrieve F12=Disconnect
F13=Clear F17=Top F18=Bottom F21=CL command entry

```

- ▶ Press Enter to continue (without entering a User Name for the SMTP server).

Figure 4-23

Press Enter to continue (without entering a User Name for the SMTP server)

```
QSH Command Entry

--
EPM system common settings:

Enable SSL for Web applications ? 0:Yes, 1:No [1]:
> 1
Enter SMTP Mail Server name
[]:
>
(The server should accept anonymous connections)

SMTP server requires authentication ? 0:Yes, 1:No [1]:
> 1
Enter User Name
[]:

===> _____
_____
_____

F3=Exit F6=Print F9=Retrieve F12=Disconnect
F13=Clear F17=Top F18=Bottom F21=CL command entry
```

- ▶ Press Enter to continue (without entering a Password for the SMTP server).

Figure 4-24

Press Enter to continue (without entering a Password for the SMTP server)

```
QSH Command Entry

Enable SSL for Web applications ? 0:Yes, 1:No [1]:
> 1
Enter SMTP Mail Server name
[]:
>
(The server should accept anonymous connections)

SMTP server requires authentication ? 0:Yes, 1:No [1]:
> 1
Enter User Name
[]:
>
Enter Password
[]:

===> _____
_____
_____

F3=Exit F6=Print F9=Retrieve F12=Disconnect
F13=Clear F17=Top F18=Bottom F21=CL command entry
```

- ▶ Press Enter to continue (without entering an Admin Email for the e-mail notifications).

Figure 4-25

Press Enter to continue (without entering an Admin Email for the e-mail notifications)

```

QSH Command Entry

[]:
>
(The server should accept anonymous connections)

SMTP server requires authentication ? 0:Yes, 1:No [1]:
> 1
Enter User Name
[]:
>
Enter Password
[]:
>
Enter Admin Email
[]:

===> _____
_____
_____

F3=Exit F6=Print F9=Retrieve F12=Disconnect
F13=Clear F17=Top F18=Bottom F21=CL command entry

```

- ▶ Enter 1 to proceed to the next step.

Figure 4-26

Enter 1 to proceed to the next step

```

QSH Command Entry

SMTP server requires authentication ? 0:Yes, 1:No [1]:
> 1
Enter User Name
[]:
>
Enter Password
[]:
>
Enter Admin Email
[]:
>

Press 1 for Next, 2 for Previous, 3 to Cancel or 5 to Redisplay [1]

===> 1_____
_____
_____

F3=Exit F6=Print F9=Retrieve F12=Disconnect
F13=Clear F17=Top F18=Bottom F21=CL command entry

```

- ▶ Enter 0 to connect to the previously configured database of Shared Services for EAS. *Note:* If EAS is being configured on a schema where an EAS database already exists, then the configurator will prompt to “re-use” or “re-create” existing tables. We recommend that you re-create the tables.

Figure 4-27

Enter 0 to connect to the previously configured database of Shared Services for EAS

```

QSH Command Entry

Press 1 for Next, 2 for Previous, 3 to Cancel or 5 to Redisplay [1]
> 1

-----
--
Database connection information:
Database Configuration for the following products:
Essbase Administration Services
Please review your requirements before putting all the products into the same
database especially for production systems.
0 - Use same database configuration information provided for Shared Services
1 - Perform 1st-time configuration of database
Your choice[0]:

===> 0_
-----
-----
F3=Exit F6=Print F9=Retrieve F12=Disconnect
F13=Clear F17=Top F18=Bottom F21=CL command entry

```

- ▶ Enter 1 to proceed to the next step.

Figure 4-28

Enter 1 to proceed to the next step

```

QSH Command Entry

-----
--
Database connection information:
Database Configuration for the following products:
Essbase Administration Services
Please review your requirements before putting all the products into the same
database especially for production systems.
0 - Use same database configuration information provided for Shared Services
1 - Perform 1st-time configuration of database
Your choice[0]:
> 0

Press 1 for Next, 2 for Previous, 3 to Cancel or 5 to Redisplay [1]

===> 1_
-----
-----
F3=Exit F6=Print F9=Retrieve F12=Disconnect
F13=Clear F17=Top F18=Bottom F21=CL command entry

```

- ▶ Enter 0 to confirm selection of Websphere application server.

Figure 4-29

Enter 0 to confirm selection of Websphere application server

```

QSH Command Entry

ssfully and there are no exceptions in the HBR log file.
ConfigurationManager not available
Attaching Java program to ../../JDBC/DataDirect/3.7/lib/hyjdbc.jar.

-----
--
Deploy to application server - Select the application server:

[ ] 1 - Embedded Java Container
[ ] 2 - Oracle | BEA WebLogic 9
[X] 3 - IBM WebSphere 6
[ ] 4 - Oracle AS 10gR3

To select an item enter its number, or 0 when you are finished: [0]

===> 0
-----
-----
F3=Exit F6=Print F9=Retrieve F12=Disconnect
F13=Clear F17=Top F18=Bottom F21=CL command entry

```

- ▶ Enter 1 to proceed to the next step.

Figure 4-30

Enter 1 to proceed to the next step

```

QSH Command Entry

--
Deploy to application server - Select the application server:

[ ] 1 - Embedded Java Container
[ ] 2 - Oracle | BEA WebLogic 9
[X] 3 - IBM WebSphere 6
[ ] 4 - Oracle AS 10gR3

To select an item enter its number, or 0 when you are finished: [0]
> 0

Press 1 for Next, 2 for Previous, 3 to Cancel or 5 to Redisplay [1]

===> 1
-----
-----
F3=Exit F6=Print F9=Retrieve F12=Disconnect
F13=Clear F17=Top F18=Bottom F21=CL command entry

```

- ▶ Press Enter to select the default location of WebSphere (for example, the location of WebSphere on iSeries is `/QIBM/ProdData/WebSphere/AppServer/V61/Express` for WebSphere Express and `/QIBM/ProdData/WebSphere/AppServer/V61/Base` for WebSphere Base).

Figure 4-31
Press Enter to select the default location of WebSphere

```

QSH Command Entry

  To select an item enter its number, or 0 when you are finished: [0]
> 0

  Press 1 for Next, 2 for Previous, 3 to Cancel or 5 to Redisplay [1]
> 1

-----
--
  Application Server Deployment: IBM WebSphere 6

  Location:: [/QIBM/ProdData/WebSphere/AppServer/V61/Express]

===> _____

-----
F3=Exit  F6=Print  F9=Retrieve  F12=Disconnect
F13=Clear F17=Top  F18=Bottom  F21=CL command entry

```

- ▶ Press Enter to accept the default server instance name (*aps*) for Provider Services; otherwise type a new server name and press Enter.

Figure 4-32
Enter server name for Provider Services

```

QSH Command Entry

  Press 1 for Next, 2 for Previous, 3 to Cancel or 5 to Redisplay [1]
> 1

-----
--
  Application Server Deployment: IBM WebSphere 6

  Location:: [/QIBM/ProdData/WebSphere/AppServer/V61/Express]
>

  Enter Server name for APS: [aps]

===> aps_____

-----
F3=Exit  F6=Print  F9=Retrieve  F12=Disconnect
F13=Clear F17=Top  F18=Bottom  F21=CL command entry

```

- ▶ Press Enter to select the default the deployment port number (13080) for Provider Services; otherwise type an unused port number and press Enter.

Figure 4-33
Enter Provider Services port number

```

QSH Command Entry

Press 1 for Next, 2 for Previous, 3 to Cancel or 5 to Redisplay [1]
> 1

-----
--
Application Server Deployment: IBM WebSphere 6
Location:: [/QIBM/ProdData/WebSphere/AppServer/V61/Express]
>

Enter Server name for APS: [aps]
> aps
Enter Port number: [13080]

===> 55030_
-----
-----
F3=Exit F6=Print F9=Retrieve F12=Disconnect
F13=Clear F17=Top F18=Bottom F21=CL command entry

```

- ▶ Press Enter to select the default SSL port number (13083) for Provider Services; otherwise type an unused port number and press Enter.

Figure 4-34
Enter SSL port number for Provider Services

```

QSH Command Entry

> 1

-----
--
Application Server Deployment: IBM WebSphere 6
Location:: [/QIBM/ProdData/WebSphere/AppServer/V61/Express]
>

Enter Server name for APS: [aps]
> aps
Enter Port number: [13080]
> 55030
Enter SSL Port number: [13083]

===> 55033_
-----
-----
F3=Exit F6=Print F9=Retrieve F12=Disconnect
F13=Clear F17=Top F18=Bottom F21=CL command entry

```

- ▶ Press Enter to accept the default server instance name (*eas*) for Administration Services; otherwise type a new server name and press Enter.

Figure 4-35
Enter server name for Administration Services

```
QSH Command Entry

--
Application Server Deployment: IBM WebSphere 6
Location:: [/QIBM/ProdData/WebSphere/AppServer/V61/Express]
>
Enter Server name for APS: [aps]
> aps
Enter Port number: [13080]
> 55030
Enter SSL Port number: [13083]
> 55033

Enter Server name for EAS: [eas]

===> eas_

F3=Exit F6=Print F9=Retrieve F12=Disconnect
F13=Clear F17=Top F18=Bottom F21=CL command entry
```

- ▶ Press Enter to select the default deployment port (10080) for EAS; otherwise type an unused port number and press Enter.

Figure 4-36
Enter EAS port number

```
QSH Command Entry

Location:: [/QIBM/ProdData/WebSphere/AppServer/V61/Express]
>
Enter Server name for APS: [aps]
> aps
Enter Port number: [13080]
> 55030
Enter SSL Port number: [13083]
> 55033

Enter Server name for EAS: [eas]
> eas
Enter Port number: [10080]

===> 55020_

F3=Exit F6=Print F9=Retrieve F12=Disconnect
F13=Clear F17=Top F18=Bottom F21=CL command entry
```

- ▶ Press Enter to select the default SSL port (10083) for EAS; otherwise type an unused port number and press Enter.

Figure 4-37
Enter SSL port number for EAS

```

QSH Command Entry

>
  Enter Server name for APS: [aps]
> aps
  Enter Port number: [13080]
> 55030
  Enter SSL Port number: [13083]
> 55033

  Enter Server name for EAS: [eas]
> eas
  Enter Port number: [10080]
> 55020
  Enter SSL Port number: [10083]

===> 55023_
_____
_____
F3=Exit F6=Print F9=Retrieve F12=Disconnect
F13=Clear F17=Top F18=Bottom F21=CL command entry

```

- ▶ Press Enter to accept the default server instance name (*SharedServices9*) for Shared Services; otherwise type a new server name and press Enter.

Figure 4-38
Enter server name for Shared Services

```

QSH Command Entry

> aps
  Enter Port number: [13080]
> 55030
  Enter SSL Port number: [13083]
> 55033

  Enter Server name for EAS: [eas]
> eas
  Enter Port number: [10080]
> 55020
  Enter SSL Port number: [10083]
> 55023

  Enter Server name for SHARED SERVICES9: [SharedServices9]

===> SharedServices_
_____
_____
F3=Exit F6=Print F9=Retrieve F12=Disconnect
F13=Clear F17=Top F18=Bottom F21=CL command entry

```

- ▶ Press Enter to select the default deployment port number (28080) for Shared Services; otherwise enter an unused port number and press Enter.

Figure 4-39
Enter Shared Services deployment port number

```
QSH Command Entry

> 55030
  Enter SSL Port number: [13083]
> 55033

  Enter Server name for EAS: [eas]
> eas
  Enter Port number: [10080]
> 55020
  Enter SSL Port number: [10083]
> 55023

  Enter Server name for SHAREDSEVICES9: [SharedServices9]
> SharedServices
  Enter Port number: [28080]

===> 55010_

F3=Exit F6=Print F9=Retrieve F12=Disconnect
F13=Clear F17=Top F18=Bottom F21=CL command entry
```

- ▶ Press Enter to select the default SSL port number (28443) for Shared Services; otherwise enter an unused port number and press Enter.

Figure 4-40
Enter SSL port number for Shared Services

```
QSH Command Entry

> 55033

  Enter Server name for EAS: [eas]
> eas
  Enter Port number: [10080]
> 55020
  Enter SSL Port number: [10083]
> 55023

  Enter Server name for SHAREDSEVICES9: [SharedServices9]
> SharedServices
  Enter Port number: [28080]
> 55010
  Enter SSL Port number: [28443]

===> 55013_

F3=Exit F6=Print F9=Retrieve F12=Disconnect
F13=Clear F17=Top F18=Bottom F21=CL command entry
```

- ▶ Enter 1 to proceed to the next step. This may take several minutes; please be patient.

Figure 4-41

Enter 1 to proceed to the next step

```

QSH Command Entry

  Enter Port number: [10080]
> 55020
  Enter SSL Port number: [10083]
> 55023

  Enter Server name for SHAREDSEVICES9: [SharedServices9]
> SharedServices
  Enter Port number: [20080]
> 55010
  Enter SSL Port number: [28443]
> 55013

  Press 1 for Next, 2 for Previous, 3 to Cancel or 5 to Redisplay [1]

===> 1_
_____
_____
_____
F3=Exit F6=Print F9=Retrieve F12=Disconnect
F13=Clear F17=Top F18=Bottom F21=CL command entry

```

- ▶ Press Enter to select the default Agent port number (1423) for Essbase; otherwise enter an unused port number and press Enter. *Note:* If the IBM i had a previous Essbase installation running on it, this port will need to be changed; 1424 would likely be acceptable.

Figure 4-42

Enter Agent port number

```

QSH Command Entry

  Press 1 for Next, 2 for Previous, 3 to Cancel or 5 to Redisplay [1]
> 1
Attaching Java program to ../../utilities/Ant/1.7.0/lib/ant.jar.
Attaching Java program to ../../utilities/Ant/1.7.0/lib/ant-launcher.jar.
Attaching Java program to ./lib/ant-contrib.jar.
Attaching Java program to /HIT51/hyperion/products/Essbase11/aps/lib/essconfi
guration.jar.

-----
--
Essbase Server Configuration

Agent Port Number: [1423]

===> 55040_
_____
_____
_____
F3=Exit F6=Print F9=Retrieve F12=Disconnect
F13=Clear F17=Top F18=Bottom F21=CL command entry

```

- ▶ Press Enter to select the default start port number (32768) for the application; otherwise enter an unused port number and press Enter.

Figure 4-43
Enter starting port number for the applications

```

QSH Command Entry

Attaching Java program to /HIT51/hyperion/products/Essbase11/aps/lib/essconfi
uration.jar.

-----
--
Essbase Server Configuration

Agent Port Number: [1423]
> 55040

Port Range for Applications:

Start Port: [32768]

===> 55050_
-----
-----
F3=Exit  F6=Print  F9=Retrieve  F12=Disconnect
F13=Clear F17=Top  F18=Bottom  F21=CL command entry

```

- ▶ Press Enter to select the default end port number (33768) for the application; otherwise enter an unused port number and press Enter. *Note:* Each Essbase application that is created requires a port, even if it is not running. The size of the range you select will be based on how many applications you think you may have (leave plenty of room for growth). You can modify the range later by changing the file *essbase.cfg* in the */<esslib>/hyperion/products/Essbase11/EssbaseServer/bin* folder.

Figure 4-44
Enter ending port number for the applications

```

QSH Command Entry

--
Essbase Server Configuration

Agent Port Number: [1423]
> 55040

Port Range for Applications:

Start Port: [32768]
> 55050

End Port: [33768]

===> 56070_
-----
-----
F3=Exit  F6=Print  F9=Retrieve  F12=Disconnect
F13=Clear F17=Top  F18=Bottom  F21=CL command entry

```

- ▶ Press Enter to accept the default ARBORPATH setting.

Figure 4-45
Press Enter to accept the default ARBORPATH setting

```

QSH Command Entry

Port Range for Applications:

Start Port: [32768]
> 55050

End Port: [33768]
> 56070

Full path to application location (ARBORPATH):
[/HIT51/hyperion/products/Essbase11/EssbaseServer]

===> _

F3=Exit F6=Print F9=Retrieve F12=Disconnect
F13=Clear F17=Top F18=Bottom F21=CL command entry

```

- ▶ Enter 18 to select English (US-ASCII) as the language for Essbase Server. *Note:* The language selection for the server and client need to match. In addition, if you plan to migrate old applications, this setting must match your old server configuration.

Figure 4-46
Enter 18 to select English (US-ASCII) as the language for Essbase Server

```

QSH Command Entry

[ ] 85 - Spanish (IBM500)
[ ] 86 - Spanish (ISO-8859-15)
[ ] 87 - Spanish (MS1252)
[ ] 88 - Swedish (Latin1)
[ ] 89 - Swedish (IBM500)
[ ] 90 - Swedish (ISO-8859-15)
[ ] 91 - Swedish (MS1252)
[ ] 92 - Thai (MS874)
[ ] 93 - TraditionalChinese (MS950)
[ ] 94 - TraditionalChinese (EUC-TW)
[ ] 95 - TraditionalChinese (IBM937)
[ ] 96 - Turkish (ISO-8859-9)

To select an item enter its number, or 0 when you are finished: [0]

===> 18_

F3=Exit F6=Print F9=Retrieve F12=Disconnect
F13=Clear F17=Top F18=Bottom F21=CL command entry

```

Important! Once your installation is in production mode, you should never change the language value. If your server is not in production mode yet, you can change the language selected during configuration without reinstalling EPM 11.1.1. For more information, see the topic “Changing the Language Selected During Installation” on p. 61.

Note: The language selected during Essbase custom configuration is also set for the EAS, EIS, and APS servers.

During Essbase custom configuration:

1. If EAS, EIS, APS or any server is selected to be configured, then during server startup, it will use the language selected by Essbase custom configuration.
2. If EAS, EIS, APS or any server is not selected to be configured, then the user has to manually start the servers to use the language selected for Essbase.

During Essbase custom configuration, the following messages are displayed on screen

- During Essbase server custom configuration, the language of EAS server is changed. If EAS server is already started, it needs to be restarted.
 - During Essbase server custom configuration, the language of APS server is changed. If APS server is already started it needs to be restarted.
 - During Essbase server custom configuration, the language of EIS server is changed. If EIS server is already started it needs to be restarted.
- Enter 0 to confirm (selecting the default language English (US-ASCII)).

Figure 4-47

Enter 0 to confirm English (US-ASCII) as the default language

```

QSH Command Entry

[ ] 85 - Spanish (IBM500)
[ ] 86 - Spanish (ISO-8859-15)
[ ] 87 - Spanish (MS1252)
[ ] 88 - Swedish (Latin1)
[ ] 89 - Swedish (IBM500)
[ ] 90 - Swedish (ISO-8859-15)
[ ] 91 - Swedish (MS1252)
[ ] 92 - Thai (MS874)
[ ] 93 - TraditionalChinese (MS950)
[ ] 94 - TraditionalChinese (EUC-TW)
[ ] 95 - TraditionalChinese (IBM937)
[ ] 96 - Turkish (ISO-8859-9)

To select an item enter its number, or 0 when you are finished: [0]

===> 0

F3=Exit F6=Print F9=Retrieve F12=Disconnect
F13=Clear F17=Top F18=Bottom F21=CL command entry

```

- Enter 0 to continue (not to deploy Essbase Server in standalone mode).

Figure 4-48
Enter 0 to continue

```
QSH Command Entry

[ ] 91 - Swedish (MS1252)
[ ] 92 - Thai (MS874)
[ ] 93 - TraditionalChinese (MS950)
[ ] 94 - TraditionalChinese (EUC-TW)
[ ] 95 - TraditionalChinese (IBM937)
[ ] 96 - Turkish (ISO-8859-9)

To select an item enter its number, or 0 when you are finished: [0]
> 0

[ ] 1 - Deploy Essbase in standalone mode

To select an item enter its number, or 0 when you are finished: [0]

===> 0_

-----
-----
-----
F3=Exit F6=Print F9=Retrieve F12=Disconnect
F13=Clear F17=Top F18=Bottom F21=CL command entry
```

- ▶ Enter 1 to proceed to the next step.

Figure 4-49
Enter 1 to proceed with the next step

```
QSH Command Entry

[ ] 95 - TraditionalChinese (IBM937)
[ ] 96 - Turkish (ISO-8859-9)

To select an item enter its number, or 0 when you are finished: [0]
> 0

[ ] 1 - Deploy Essbase in standalone mode

To select an item enter its number, or 0 when you are finished: [0]
> 0

Press 1 for Next, 2 for Previous, 3 to Cancel or 5 to Redisplay [1]

===> 1_

-----
-----
-----
F3=Exit F6=Print F9=Retrieve F12=Disconnect
F13=Clear F17=Top F18=Bottom F21=CL command entry
```

- ▶ Enter 1 to start configuration.

Figure 4-50
Enter 1 to start configuration

```

QSH Command Entry

Common Settings
Deploy to Application Server
Provider Services
Register with Shared Services
Deploy to Application Server
Essbase Administration Services
Configure Database
Register with Shared Services
Deploy to Application Server
Essbase Services
Register with Shared Services
Essbase Custom Configuration

Press 1 for Next, 2 for Previous, 3 to Cancel or 5 to Redisplay [1]

===> 1_
_____
_____
_____
F3=Exit F6=Print F9=Retrieve F12=Disconnect
F13=Clear F17=Top F18=Bottom F21=CL command entry

```

- ▶ The configurator checks for a default WebSphere profile (instance) named hyslprofile. If it does not exist, then:
 - The configurator will take the profile name as hyslprofile.
 - The configurator will read the default ports from `</esslib>/hyperion/common/config/9.5.0.0/resources/websphere/resources/profile-portsdef.props` instead of asking for the port range from the user.

If the default profile already exists, then the configurator will prompt to enter a new profile name and starting port for the profile. In that case:

- Enter the profile name for WebSphere (for example, HIT51P) and press Enter.
- Enter the starting port for the WebSphere profile (for example, 56080).

Figure 4-51
Enter profile name and starting port for Websphere, if prompted

```

QSH Command Entry

Essbase Custom Configuration

Press 1 for Next, 2 for Previous, 3 to Cancel or 5 to Redisplay [1]
> 1

Starting WebSphere 6 Admin server...
Enter Values for Profile Name and Starting Port for Profile

Enter Profile Name :
> HIT51P

Enter Starting Port and next 17 ports from this must not be used by any
other application :

===> 56080_
_____
_____
_____
F3=Exit F6=Print F9=Retrieve F12=Disconnect
F13=Clear F17=Top F18=Bottom F21=CL command entry

```

- ▶ The configuration requires about **two hours** to complete (the actual time may vary). After a successful configuration, the configuration status for each component will be displayed.
- ▶ Enter 0 to finish configuration if all selected tasks have completed successfully; otherwise enter 1 followed by 0 to go back to the Product Selection Panel to reconfigure failed tasks, if any.

Figure 4-52

Enter 0 to finish configuration or enter 1 to return to the Product Selection Panel to reconfigure failed tasks, if any

```

QSH Command Entry

Essbase Administration Services
  Configure Database           Completed
  Register with Shared Services Completed
  Deploy to Application Server  Completed
Essbase Services
  Register with Shared Services Completed
  Essbase Custom Configuration Completed

Do you want to go back to the Product Selection Panel?

[ ] 1 - Yes
[X] 2 - No

To select an item enter its number, or 0 when you are finished: [0]

==> 0
_____
_____
_____
F3=Exit  F6=Print  F9=Retrieve  F12=Disconnect
F13=Clear F17=Top  F18=Bottom  F21=CL command entry

```

- ▶ Enter 3 to finish the configuration.

Figure 4-53

Enter 3 to finish the configuration

```

QSH Command Entry

Register with Shared Services  Completed
Essbase Custom Configuration  Completed

Do you want to go back to the Product Selection Panel?

[ ] 1 - Yes
[X] 2 - No

To select an item enter its number, or 0 when you are finished: [0]
> 0

All configuration tasks have been completed.

Press 3 to Finish or 5 to Redisplay [3]

==> 3
_____
_____
_____
F3=Exit  F6=Print  F9=Retrieve  F12=Disconnect
F13=Clear F17=Top  F18=Bottom  F21=CL command entry

```

The configurator will now exit.

- ▶ Press F6 to print the scroller. This will create a spool file with all of the information displayed in the screens above, providing you with a record of the options selected during the configuration of your Essbase server.

Configuring a Reinstallation

A reinstallation is the same as a new installation except that a reinstallation preserves configuration information that was done previously. The steps for configuring Essbase after a reinstallation are the same as that of a normal configuration. For more information, see the topic “Configuring a New Installation” on p. 15.

Configuring a Maintenance Installation

A maintenance installation applies localization changes to an existing installation and also preserves configuration information done previously. These changes mainly affect the deployed components and Essbase Server configuration. Follow the steps below to configure your installation after applying a maintenance release.

- ▶ On the last page of EPM System Installer, select the Configure option and press Enter.
- ▶ Using Qshell, enter `configtool.sh -console` from `/<esslib>/hyperion/common/config/9.5.0.0`, where `<esslib>` is the name of the Essbase installation library and `9.5.0.0` is the current version number of the component. Once launched, EPM System Configurator displays introductory text.
- ▶ Enter `q` to skip the introductory text and continue with the configuration.

Figure 4-54

EPM System Configurator introductory text

```

QSH Command Entry

This software and related documentation are provided under a license agreement
t
containing restrictions on use and disclosure and are protected by intellectu
al
property laws. Except as expressly permitted in your license agreement or
allowed by law, you may not use, copy, reproduce, translate, broadcast, modif
y,
license, transmit, distribute, exhibit, perform, publish or display any part,
in any form, or by any means. Reverse engineering, disassembly, or
decompilation of this software, unless required by law for interoperability,
is

Press ENTER to read the text [Type q to quit]

===> q_

F3=Exit  F6=Print  F9=Retrieve  F12=Disconnect
F13=Clear  F17=Top  F18=Bottom  F21=CL command entry

```

- ▶ Enter `1` to proceed to the next step.

Figure 4-55
Enter 1 to proceed to the next step

```
QSH Command Entry

a\
property laws. Except as expressly permitted in your license agreement or
allowed by law, you may not use, copy, reproduce, translate, broadcast, modif
y,
license, transmit, distribute, exhibit, perform, publish or display any part,
in any form, or by any means. Reverse engineering, disassembly, or
decompilation of this software, unless required by law for interoperability,
is

Press ENTER to read the text [Type q to quit]
> q

Press 1 for Next, 3 to Cancel or 5 to Redisplay [1]

==> 1_

-----
F3=Exit  F6=Print F9=Retrieve F12=Disconnect
F13=Clear F17=Top  F18=Bottom  F21=CL command entry
```

- ▶ Enter 4 to select Essbase Server Configuration.

Figure 4-56
Enter 4 to select Essbase Server Configuration

```
QSH Command Entry

Press 1 for Next, 3 to Cancel or 5 to Redisplay [1]
> 1

-----
--
Select the products to configure:

[X] 1 - (Pending) Hyperion Foundation
[X] 2 - (Pending) [Essbase] Provider Services
[X] 3 - (Pending) [Essbase] Essbase Administration Services
[ ] 4 - (Pending) [Essbase] Essbase Services

To select an item enter its number, or 0 when you are finished: [0]

==> 4_

-----
F3=Exit  F6=Print F9=Retrieve F12=Disconnect
F13=Clear F17=Top  F18=Bottom  F21=CL command entry
```

- ▶ Enter 0 to confirm your selections.

Figure 4-57
Enter 0 to confirm your selections

```

QSH Command Entry

[X] 2 - (Pending) [Essbase] Provider Services
[X] 3 - (Pending) [Essbase] Essbase Administration Services
[ ] 4 - (Pending) [Essbase] Essbase Services

To select an item enter its number, or 0 when you are finished: [0]
> 4

[X] 1 - (Pending) Hyperion Foundation
[X] 2 - (Pending) [Essbase] Provider Services
[X] 3 - (Pending) [Essbase] Essbase Administration Services
[X] 4 - (Pending) [Essbase] Essbase Services

To select an item enter its number, or 0 when you are finished: [0]
===> 0

F3=Exit F6=Print F9=Retrieve F12=Disconnect
F13=Clear F17=Top F18=Bottom F21=CL command entry

```

- ▶ Enter 1 to proceed to the next step.

Figure 4-58
Enter 1 to proceed to the next step

```

QSH Command Entry

To select an item enter its number, or 0 when you are finished: [0]
> 4

[X] 1 - (Pending) Hyperion Foundation
[X] 2 - (Pending) [Essbase] Provider Services
[X] 3 - (Pending) [Essbase] Essbase Administration Services
[X] 4 - (Pending) [Essbase] Essbase Services

To select an item enter its number, or 0 when you are finished: [0]
> 0

Press 1 for Next, 2 for Previous, 3 to Cancel or 5 to Redisplay [1]

===> 1

F3=Exit F6=Print F9=Retrieve F12=Disconnect
F13=Clear F17=Top F18=Bottom F21=CL command entry

```

- ▶ Enter 0 to confirm the selection for Provider Services.

Figure 4-59
Enter 0 to confirm the selection for Provider Services

```

QSH Command Entry

> 1

-----
--
Select the configuration tasks for the products you selected on the previous
screen:

Provider Services

[X] 1 - (Pending) Deploy to Application Server

To select an item enter its number, or 0 when you are finished: [0]

==> 0_

-----
F3=Exit F6=Print F9=Retrieve F12=Disconnect
F13=Clear F17=Top F18=Bottom F21=CL command entry

```

- ▶ The database for EAS has already been configured. Enter 0 to confirm the selections for Essbase Administration Services.

Figure 4-60
Enter 0 to confirm the selections for Essbase Administration Services

```

QSH Command Entry

Provider Services

[X] 1 - (Pending) Deploy to Application Server

To select an item enter its number, or 0 when you are finished: [0]
> 0

Essbase Administration Services

[ ] 1 - (Configured) Configure Database
[X] 2 - (Pending) Deploy to Application Server

To select an item enter its number, or 0 when you are finished: [0]

==> 0_

-----
F3=Exit F6=Print F9=Retrieve F12=Disconnect
F13=Clear F17=Top F18=Bottom F21=CL command entry

```

- ▶ Enter 1 to select Essbase Custom Configuration.

Figure 4-61
Enter 1 to select Essbase Custom Configuration

```

QSH Command Entry

Essbase Administration Services

[ ] 1 - (Configured) Configure Database
[X] 2 - (Pending) Deploy to Application Server

To select an item enter its number, or 0 when you are finished: [0]
> 0

Essbase Services

[ ] 1 - (Configured) Essbase Custom Configuration

To select an item enter its number, or 0 when you are finished: [0]

===> 1_

F3=Exit  F6=Print  F9=Retrieve  F12=Disconnect
F13=Clear F17=Top  F18=Bottom  F21=CL command entry

```

- ▶ Enter 0 to confirm the selection for Essbase Services.

Figure 4-62
Enter 0 to confirm the selection for Essbase Services

```

QSH Command Entry

> 0

Essbase Services

[ ] 1 - (Configured) Essbase Custom Configuration

To select an item enter its number, or 0 when you are finished: [0]
> 1

[X] 1 - (Configured) Essbase Custom Configuration

To select an item enter its number, or 0 when you are finished: [0]

===> 0_

F3=Exit  F6=Print  F9=Retrieve  F12=Disconnect
F13=Clear F17=Top  F18=Bottom  F21=CL command entry

```

- ▶ The database and common settings for Shared Services have already been configured. Enter 0 to confirm the selections for Hyperion Foundation.

Figure 4-63
Enter 0 to confirm the selections for Hyperion Foundation

```

QSH Command Entry

[X] 1 - (Configured) Essbase Custom Configuration

To select an item enter its number, or 0 when you are finished: [0]
> 0

Hyperion Foundation

[ ] 1 - (Configured) Configure Database
[ ] 2 - (Configured) Common Settings
[X] 3 - (Pending) Deploy to Application Server

To select an item enter its number, or 0 when you are finished: [0]

==> 0_

F3=Exit F6=Print F9=Retrieve F12=Disconnect
F13=Clear F17=Top F18=Bottom F21=CL command entry

```

- ▶ Enter 1 to proceed to the next step.

Figure 4-64
Enter 1 to proceed to the next step

```

QSH Command Entry

> 0

Hyperion Foundation

[ ] 1 - (Configured) Configure Database
[ ] 2 - (Configured) Common Settings
[X] 3 - (Pending) Deploy to Application Server

To select an item enter its number, or 0 when you are finished: [0]
> 0

Press 1 for Next, 2 for Previous, 3 to Cancel or 5 to Redisplay [1]

==> 1_

F3=Exit F6=Print F9=Retrieve F12=Disconnect
F13=Clear F17=Top F18=Bottom F21=CL command entry

```

- ▶ Enter 0 to confirm selection of the Websphere application server.

Figure 4-65
Enter 0 to confirm selection of the Websphere application server

```

QSH Command Entry

Press 1 for Next, 2 for Previous, 3 to Cancel or 5 to Redisplay [1]
> 1

-----
--
Deploy to application server - Select the application server:

[ ] 1 - Embedded Java Container
[ ] 2 - Oracle | BEA WebLogic 9
[X] 3 - IBM WebSphere 6
[ ] 4 - Oracle AS 10gR3

To select an item enter its number, or 0 when you are finished: [0]

===> 0

-----
F3=Exit   F6=Print  F9=Retrieve F12=Disconnect
F13=Clear F17=Top   F18=Bottom F21=CL command entry

```

- ▶ Enter 1 to proceed to the next step.

Figure 4-66
Enter 1 to proceed to the next step

```

QSH Command Entry

--
Deploy to application server - Select the application server:

[ ] 1 - Embedded Java Container
[ ] 2 - Oracle | BEA WebLogic 9
[X] 3 - IBM WebSphere 6
[ ] 4 - Oracle AS 10gR3

To select an item enter its number, or 0 when you are finished: [0]
> 0

Press 1 for Next, 2 for Previous, 3 to Cancel or 5 to Redisplay [1]

===> 1

-----
F3=Exit   F6=Print  F9=Retrieve F12=Disconnect
F13=Clear F17=Top   F18=Bottom F21=CL command entry

```

- ▶ Press Enter to select the default location of WebSphere (for example, the location of WebSphere on iSeries is */QIBM/ProdData/WebSphere/AppServer/V61/Express* for WebSphere Express and */QIBM/ProdData/WebSphere/AppServer/V61/Base* for WebSphere Base).

Figure 4-67
 Press Enter to select the default location of WebSphere

```

QSH Command Entry

  To select an item enter its number, or 0 when you are finished: [0]
> 0

  Press 1 for Next, 2 for Previous, 3 to Cancel or 5 to Redisplay [1]
> 1

-----
--
  Application Server Deployment: IBM WebSphere 6

  Location:: [/QIBM/ProdData/WebSphere/AppServer/V61/Express]

===> _

-----
F3=Exit  F6=Print  F9=Retrieve  F12=Disconnect
F13=Clear F17=Top   F18=Bottom  F21=CL command entry
  
```

- ▶ Press Enter to accept the default server instance name (*aps*) for Provider Services; otherwise type a new server name and press Enter.

Figure 4-68
 Press Enter to accept the default server instance name for Provider Services

```

QSH Command Entry

  Press 1 for Next, 2 for Previous, 3 to Cancel or 5 to Redisplay [1]
> 1

-----
--
  Application Server Deployment: IBM WebSphere 6

  Location:: [/QIBM/ProdData/WebSphere/AppServer/V61/Express]
>

  Enter Server name for  APS: [aps]

===> _

-----
F3=Exit  F6=Print  F9=Retrieve  F12=Disconnect
F13=Clear F17=Top   F18=Bottom  F21=CL command entry
  
```

- ▶ Press Enter to accept the deployment port number for Provider Services (specified in square brackets); otherwise type an unused port number and press Enter.

Figure 4-69
Press Enter to accept the deployment port number for Provider Services

```

QSH Command Entry

Press 1 for Next, 2 for Previous, 3 to Cancel or 5 to Redisplay [1]
> 1
-----
--
Application Server Deployment: IBM WebSphere 6
Location:: [/QIBM/ProdData/WebSphere/AppServer/V61/Express]
>
Enter Server name for APS: [aps]
>
Enter Port number: [28230]
===> _____
_____
_____
F3=Exit F6=Print F9=Retrieve F12=Disconnect
F13=Clear F17=Top F18=Bottom F21=CL command entry

```

- ▶ Press Enter to accept the SSL port number for Provider Services (specified in square brackets); otherwise type an unused port number and press Enter.

Figure 4-70
Press Enter to accept the SSL port number for Provider Services

```

QSH Command Entry

> 1
-----
--
Application Server Deployment: IBM WebSphere 6
Location:: [/QIBM/ProdData/WebSphere/AppServer/V61/Express]
>
Enter Server name for APS: [aps]
>
Enter Port number: [28230]
>
Enter SSL Port number: [28233]
===> _____
_____
_____
F3=Exit F6=Print F9=Retrieve F12=Disconnect
F13=Clear F17=Top F18=Bottom F21=CL command entry

```

- ▶ Press Enter to accept the default server instance name (*eas*) for Administration Services; otherwise type a new server name and press Enter.

Figure 4-71

Press Enter to accept the default server instance name for Administration Services

```

QSH Command Entry

--
Application Server Deployment: IBM WebSphere 6
Location:: [/QIBM/ProdData/WebSphere/AppServer/V61/Express]
>
Enter Server name for APS: [aps]
>
Enter Port number: [28230]
>
Enter SSL Port number: [28233]
>
Enter Server name for EAS: [eas]

===> _
_____
_____
_____
F3=Exit F6=Print F9=Retrieve F12=Disconnect
F13=Clear F17=Top F18=Bottom F21=CL command entry

```

- ▶ Press Enter to accept the deployment port for EAS (specified in square brackets); otherwise type an unused port number and press Enter.

Figure 4-72

Press Enter to accept the deployment port for EAS

```

QSH Command Entry

Location:: [/QIBM/ProdData/WebSphere/AppServer/V61/Express]
>
Enter Server name for APS: [aps]
>
Enter Port number: [28230]
>
Enter SSL Port number: [28233]
>
Enter Server name for EAS: [eas]
>
Enter Port number: [28220]

===> _
_____
_____
_____
F3=Exit F6=Print F9=Retrieve F12=Disconnect
F13=Clear F17=Top F18=Bottom F21=CL command entry

```

- ▶ Press Enter to accept the SSL port for EAS (specified in square brackets); otherwise type an unused port number and press Enter.

Figure 4-73
Press Enter to accept the SSL port for EAS

```
QSH Command Entry

>
> Enter Server name for APS: [aps]
> Enter Port number: [28230]
> Enter SSL Port number: [28233]
>
> Enter Server name for EAS: [eas]
> Enter Port number: [28220]
> Enter SSL Port number: [28223]

===> _

F3=Exit F6=Print F9=Retrieve F12=Disconnect
F13=Clear F17=Top F18=Bottom F21=CL command entry
```

- ▶ Press Enter to accept the default server instance name (*SharedServices9*) for Shared Services; otherwise type a new server name and press Enter.

Figure 4-74
Press Enter to accept the default server instance name for Shared Services

```
QSH Command Entry

>
> Enter Port number: [28230]
> Enter SSL Port number: [28233]
>
> Enter Server name for EAS: [eas]
> Enter Port number: [28220]
> Enter SSL Port number: [28223]
>
> Enter Server name for SHAREDSEVICES9: [SharedServices9]

===> _

F3=Exit F6=Print F9=Retrieve F12=Disconnect
F13=Clear F17=Top F18=Bottom F21=CL command entry
```

- ▶ Press Enter to accept the deployment port number for Shared Services (specified in square brackets); otherwise enter an unused port number and press Enter.

Figure 4-75
Press Enter to accept the deployment port number for Shared Services

```
QSH Command Entry

>
  Enter SSL Port number: [28233]
>
  Enter Server name for EAS: [eas]
>
  Enter Port number: [28220]
>
  Enter SSL Port number: [28223]
>
  Enter Server name for SHAREDSEVICES9: [SharedServices9]
>
  Enter Port number: [28210]

===> _

F3=Exit  F6=Print F9=Retrieve F12=Disconnect
F13=Clear F17=Top  F18=Bottom F21=CL command entry
```

- ▶ Press Enter to accept the SSL port number for Shared Services (specified in square brackets); otherwise enter an unused port number and press Enter.

Figure 4-76
Press Enter to accept the SSL port number for Shared Services

```
QSH Command Entry

>
  Enter Server name for EAS: [eas]
>
  Enter Port number: [28220]
>
  Enter SSL Port number: [28223]
>
  Enter Server name for SHAREDSEVICES9: [SharedServices9]
>
  Enter Port number: [28210]
>
  Enter SSL Port number: [28213]

===> _

F3=Exit  F6=Print F9=Retrieve F12=Disconnect
F13=Clear F17=Top  F18=Bottom F21=CL command entry
```

- ▶ Enter 1 to proceed to the next step. This may take several minutes; please be patient.

Figure 4-77
Enter 1 to proceed to the next step

```

QSH Command Entry

  Enter Port number:  [28220]
>
  Enter SSL Port number:  [28223]
>

  Enter Server name for  SHAREDSEVICES9:  [SharedServices9]
>
  Enter Port number:  [28210]
>
  Enter SSL Port number:  [28213]
>

  Press 1 for Next, 2 for Previous, 3 to Cancel or 5 to Redisplay [1]

==> 1_
_____
_____

F3=Exit  F6=Print F9=Retrieve F12=Disconnect
F13=Clear F17=Top  F18=Bottom  F21=CL command entry

```

- ▶ Press Enter to accept the Agent port number for Essbase (specified in square brackets); otherwise enter an unused port number and press Enter. *Note:* If the IBM i had a previous Essbase installation running on it, this port will need to be changed.

Figure 4-78
Press Enter to accept the Agent port number for Essbase

```

QSH Command Entry

  Enter Port number:  [28210]
>
  Enter SSL Port number:  [28213]
>

  Press 1 for Next, 2 for Previous, 3 to Cancel or 5 to Redisplay [1]
> 1
-----
--
Essbase Server Configuration

  Agent Port Number:  [28240]

==> _
_____
_____

F3=Exit  F6=Print F9=Retrieve F12=Disconnect
F13=Clear F17=Top  F18=Bottom  F21=CL command entry

```

- ▶ Press Enter to accept the start port number for the application (specified in square brackets); otherwise enter an unused port number and press Enter.

Figure 4-79
Press Enter to accept the start port number for the application

```

QSH Command Entry

  Press 1 for Next, 2 for Previous, 3 to Cancel or 5 to Redisplay [1]
> 1
-----
--
  Essbase Server Configuration

  Agent Port Number: [28240]
>

  Port Range for Applications:

  Start Port: [28250]

===> _____
_____
_____
F3=Exit  F6=Print  F9=Retrieve  F12=Disconnect
F13=Clear F17=Top   F18=Bottom  F21=CL command entry

```

- ▶ Press Enter to accept the end port number for the application (specified in square brackets); otherwise enter an unused port number and press Enter. *Note:* Each Essbase application that is created requires a port, even if it is not running. The size of the range you select will be based on how many applications you think you may have (leave plenty of room for growth). You can modify the range later by changing the file *essbase.cfg* in the */<esslib>/hyperion/products/Essbase11/EssbaseServer/bin* folder.

Figure 4-80
Press Enter to accept the end port number for the application

```

QSH Command Entry

--
  Essbase Server Configuration

  Agent Port Number: [28240]
>

  Port Range for Applications:

  Start Port: [28250]
>

  End Port: [28270]

===> _____
_____
_____
F3=Exit  F6=Print  F9=Retrieve  F12=Disconnect
F13=Clear F17=Top   F18=Bottom  F21=CL command entry

```

- ▶ Press Enter to accept the default ARBORPATH setting.

Figure 4-81
Press Enter to accept the default ARBORPATH setting

```

QSH Command Entry

Port Range for Applications:

Start Port: [28250]
>

End Port: [28270]
>

Full path to application location (ARBORPATH):
[/HIT56GA/hyperion/products/Essbase11/EssbaseServer]

===> _____

F3=Exit  F6=Print F9=Retrieve F12=Disconnect
F13=Clear F17=Top  F18=Bottom  F21=CL command entry

```

- ▶ The ESSSLANG setting which was selected in the previous configuration will be selected as the default in this configuration. Enter 0 to confirm the ESSSLANG setting for Essbase Server.

Figure 4-82
Press Enter to accept the default ESSSLANG setting

```

QSH Command Entry

[ ] 85 - Spanish (IBM500)
[ ] 86 - Spanish (ISO-8859-15)
[ ] 87 - Spanish (MS1252)
[ ] 88 - Swedish (Latin1)
[ ] 89 - Swedish (IBM500)
[ ] 90 - Swedish (ISO-8859-15)
[ ] 91 - Swedish (MS1252)
[ ] 92 - Thai (MS874)
[ ] 93 - TraditionalChinese (MS950)
[ ] 94 - TraditionalChinese (EUC-TW)
[ ] 95 - TraditionalChinese (IBM937)
[ ] 96 - Turkish (ISO-8859-9)

To select an item enter its number, or 0 when you are finished: [0]

===> 0_____

F3=Exit  F6=Print F9=Retrieve F12=Disconnect
F13=Clear F17=Top  F18=Bottom  F21=CL command entry

```

- ▶ Enter 0 to continue (not to deploy Essbase Server in standalone mode).

Figure 4-83
Enter 0 to continue

```
QSH Command Entry

[ ] 91 - Swedish (MS1252)
[ ] 92 - Thai (MS874)
[ ] 93 - TraditionalChinese (MS950)
[ ] 94 - TraditionalChinese (EUC-TW)
[ ] 95 - TraditionalChinese (IBM937)
[ ] 96 - Turkish (ISO-8859-9)

To select an item enter its number, or 0 when you are finished: [0]
> 0

[ ] 1 - Deploy Essbase in standalone mode

To select an item enter its number, or 0 when you are finished: [0]

==> 0_

-----
-----
-----
F3=Exit  F6=Print  F9=Retrieve  F12=Disconnect
F13=Clear F17=Top  F18=Bottom  F21=CL command entry
```

- ▶ Enter 1 to proceed to the next step.

Figure 4-84
Enter 1 to proceed to the next step

```
QSH Command Entry

[ ] 95 - TraditionalChinese (IBM937)
[ ] 96 - Turkish (ISO-8859-9)

To select an item enter its number, or 0 when you are finished: [0]
> 0

[ ] 1 - Deploy Essbase in standalone mode

To select an item enter its number, or 0 when you are finished: [0]
> 0

Press 1 for Next, 2 for Previous, 3 to Cancel or 5 to Redisplay [1]

==> 1_

-----
-----
-----
F3=Exit  F6=Print  F9=Retrieve  F12=Disconnect
F13=Clear F17=Top  F18=Bottom  F21=CL command entry
```

- ▶ Enter 1 to start the configuration.

Figure 4-85
Enter 1 to start the configuration

```

QSH Command Entry

--
The Configuration Manager has collected all required information to proceed.
The following tasks will be executed:

Hyperion Foundation
  Deploy to Application Server
Provider Services
  Deploy to Application Server
Essbase Administration Services
  Deploy to Application Server
Essbase Services
  Essbase Custom Configuration

Press 1 for Next, 2 for Previous, 3 to Cancel or 5 to Redisplay [1]

===> 1

```

```

F3=Exit  F6=Print F9=Retrieve F12=Disconnect
F13=Clear F17=Top  F18=Bottom  F21=CL command entry

```

- The configurator will not prompt for a WebSphere profile name and port number. However, it will deploy the components in the profile in which the components were deployed previously.

Figure 4-86
The configuration starts

```

QSH Command Entry

Hyperion Foundation
  Deploy to Application Server
Provider Services
  Deploy to Application Server
Essbase Administration Services
  Deploy to Application Server
Essbase Services
  Essbase Custom Configuration

Press 1 for Next, 2 for Previous, 3 to Cancel or 5 to Redisplay [1]
> 1

Starting WebSphere 6 Admin server...

===>

```

```

F3=Exit  F6=Print F9=Retrieve F12=Disconnect
F13=Clear F17=Top  F18=Bottom  F21=CL command entry

```

Installation and Configuration Files

The following files get updated after the configuration of each respective component. For information about log files created during installation and configuration, see Appendix D (*Log Files*) on p. 87.

Installation Files

The following files are created during installation to store product information.

File: `$USER_HOME/.hyperion.$HostName` stores the `HYPERION_HOME` value (for example, `/<esslib>/Hyperion`).

File: `$USER_HOME/.oracle.$HostName.products` stores the list of products and their relative locations.

File: `$USER_HOME/set_hyphome_.$HostName_1.sh` sets `HYPERION_HOME`.

Provider Services

File: `/<esslib>/Hyperion/common/config/9.5.0.0/product/aps/9.5.0.0/aps_1_config.xml` stores the state of APS configuration (Pending, Failed or Deployed), and other details such as the deployment server used in the configuration.

Administration Services

File: `/<esslib>/Hyperion/common/config/9.5.0.0/product/eas/9.5.0.0/eas_1_config.xml` stores the state of EAS configuration (Pending, Failed or Deployed), and other details such as the deployment server and database used in configuration.

File: `/<esslib>/Hyperion/products/Essbase11/eas/server/dao.properties` stores database configuration details for Essbase Administration Services.

Analytic Services

File:
`/<esslib>/Hyperion/common/config/9.5.0.0/product/essbaseserver/9.5.0.0/essbaseserver_1_config.xml`
stores the state of APS configuration (Pending, Failed or Deployed), and other details such as the deployment server used in the configuration.

File: Essbase Server uses `/<esslib>/Hyperion/products/Essbase11/EssbaseServer/bin/essbase.cfg` to store configuration settings. User can change the default port numbers for Essbase server by adding the following lines to the `essbase.cfg` file. For more information, see the topic “Changing the Port Range Selected During Installation” on p. 62.

```
AGENTPORT <agent_port_number>
SERVERPORTBEGIN <server_begin_port_number>
SERVERPORTEND <server_end_port_number>
PORTINC <port_increment_number>
```

For example:

```
AGENTPORT 1426
SERVERPORTBEGIN 14200
SERVERPORTEND 14300
PORTINC 1
```

For other configuration settings, refer to http://download.oracle.com/docs/cd/E12825_01/epm.111/esb_techref/frameset.htm?config_setting_chap.htm.

Shared Services

File:

<esslib>/Hyperion/common/config/9.5.0.0/product/foundation/9.5.0.0/foundation_1_config.xml stores the state of EAS configuration (Pending, Failed or Deployed), and other details such as the deployment server and database used in the configuration.

File: *<esslib>/Hyperion/common/config/9.5.0.0/reg.properties* is created after the Shared Services database configuration to store registry information details.

Integration Services

File: *<esslib>/Hyperion/products/Essbase11/eis/server/bin/ais.cfg*

If multiple installations are running on the same machine, then you need to change the EIS port in the file above. Add the following parameter in above line to change EIS service port and log level:

```
[L]=0  
[P]=7000
```

For more configuration settings, refer to

http://download.oracle.com/docs/cd/E12825_01/epm.111/eis11_1_1_sysadmin_html/frameset.htm?ch02s02s03.htm

Changing the Language Selected During Installation

If you have selected the default language, (English_UnitedStates.US-ASCII@Binary) while installing Essbase and want to change it later on, you need to make the following changes:

1. Stop the Essbase Analytic (OLAP) Server.
2. Change the value of the `ESSLANG` environment variable in the *hyperionenv.doc* file from the *<esslib>/hyperion/products/essbase11/EssbaseServer/* folder. If the English_UnitedStates.US-ASCII@Binary language was selected during installation, then you will see `ESSLANG=English_UnitedStates.US-ASCII@Binary` in the *hyperionenv.doc* file. Set it to a valid locale/language supported by Essbase. For example, French_France.Latin1@Default or English_UnitedStates.Latin1@Binary.
3. Stop the Essbase Integration Server.
4. Change the value of the `ESSLANG` environment variable in the *is.sh* file from the *<esslib>/hyperion/products/essbase11/eis/server* folder. If the English_UnitedStates.US-ASCII@Binary language was selected during installation, then you will see `export ESSLANG=English_UnitedStates.US-ASCII@Binary` in the *is.sh* file. Set it to a valid locale/language supported by Essbase. For example, French_France.Latin1@Default or English_UnitedStates.Latin1@Binary.
5. For Administration Services and Provider Services, there is no prompt to specify the `ESSLANG` value while configuring Essbase; it is set to the default value English_UnitedStates.US-ASCII@Binary.
6. Stop the Essbase Administration Server.

7. Change the value of `ESSLANG` in the *OlapAdmin.properties* file from the `/<esslib>/hyperion/products/essbase11/eas/server` folder. By default, you will see `ESSLANG=English_UnitedStates.US-ASCII@Binary` in the *OlapAdmin.properties* file. Set it to a valid locale/language supported by Essbase. For example, `French_France.Latin1@Default` or `English_UnitedStates.Latin1@Binary`.
8. Stop the Provider Services.
9. Change the value of `ESSLANG` in the *Essbase.properties* file from the `/<esslib>/hyperion/products/essbase11/aps/bin` folder. By default, you will see `ESSLANG=English_UnitedStates.US-ASCII@Binary` in the *Essbase.properties* file. Set it to a valid locale/language supported by Essbase. For example, `French_France.Latin1@Default` or `English_UnitedStates.Latin1@Binary`.
10. Start all stopped servers.

If you change the `ESSLANG` environment variable, change it for Essbase Analytic (OLAP) Server, Essbase Integration Server, and Essbase Administration Server. For a list of supported locales, see Oracle's web site at http://download.oracle.com/docs/cd/E12825_01/epm.111/esb_dbag/frameset.htm?duniwork.htm#duniwork1019784.

Changing the Port Range Selected During Installation

You can change the port range specified for Essbase Server during installation. To change the port range, you need to update the *essbase.cfg* file from the `/<esslib>/hyperion/products/essbase11/EssbaseServer/bin` folder.

```
AGENTPORT <agent_port_number>
SERVERPORTBEGIN <server_begin_port_number>
SERVERPORTEND <server_end_port_number>
PORTINC <port_increment_number>
```

Where,

AGENTPORT: Specifies the port that the agent uses.

SERVERPORTBEGIN: Specifies the first port number Essbase will try to use for its first application process (ESSSVR).

SERVERPORTEND: Specifies the highest value Essbase will try to use for a port when it tries to start an application process (ESSSVR). If the value is unavailable, the application process will fail.

PORTINC: Specifies the value of the increment in between port numbers used by the Essbase agent process.

To edit the *essbase.cfg* configuration file:

1. Open the file with a text editor.
2. Enter each setting on a separate line in the file. Semicolon terminators are not required.
3. Save the file as *essbase.cfg* in the `/bin` directory.

4. After editing the configuration file, perform the proper action to have the configuration file reread:
 - If the setting applies to the server, stop and restart Essbase Server.
 - If the setting applies to a specific application, stop the application (if it is running) and restart it.
 - If the setting applies to a database only, restart the application.

Uninstalling Essbase Server Components

The uninstall process will uninstall all servers (Analytic, Administration, Integration, Shared Services, and Provider Services). They cannot be uninstalled separately.

1. Verify that an `/uninstall` directory exists under the root of IFS. If it does not, create the directory now. *Note:* If the file `/uninstall/uninstall.log` already exists, rename it or remove it; otherwise the uninstall will fail.
2. Type `STRQSH` and press Enter to start the Qshell.
3. Go to the `/<esslib>/hyperion/uninstall` folder, where `<esslib>` is the name of the Essbase library you want to uninstall.
4. Type `uninstall.sh` and press Enter.
5. Enter 1 to proceed with the uninstallation.
6. Enter your Essbase Server username and press Enter. (You may not be prompted for a username if the original installation for this instance did not complete successfully.)
7. Enter your Essbase Server password and press Enter. (You may not be prompted for a password if the original installation for this instance did not complete successfully.)

The uninstallation process will automatically stop the servers (if any servers were started) and delete the Websphere Application Server profile.

8. The following items need to be removed/deleted manually:
 - The installation's IFS root entry and subdirectories. This is the name of your Essbase installation library. This can be done by using the `WRKLNK <esslib>` command, option 2 and option 9 (recursive delete) on each item.
 - The ILE (Integrated Language Environment) library where Essbase was installed. This can be done by using the `DLTLIB <esslib>` command from the iSeries command line.
 - The database schema created during configuration. See the next topic for details.
9. Remove the directory created during the restore (`RST`) of objects from the DVD to the IFS for installation. The default directory is `/spssinc-ESSBASE11/`.

Deleting the Database Schema

The database schema, created during configuration, needs to be deleted manually if you are uninstalling. You can delete a schema on the iSeries in one of three ways:

- ▶ Use `DROP SCHEMA <schema_name>` from Interactive SQL (`STRSQL`).

- ▶ Use the following commands:
CHGJOB INQMSGRPY (*DFT)
DLTLIB <schema_name>
- ▶ Use iSeries Navigator to remove the schema by right-clicking the schema name and choosing Delete. If the schema does not show up in the list, then it can be added by right-clicking Schemas in the left panel and choosing Select Schemas to Display. See the screenshots below for more information.

Figure 4-87
iSeries Navigator

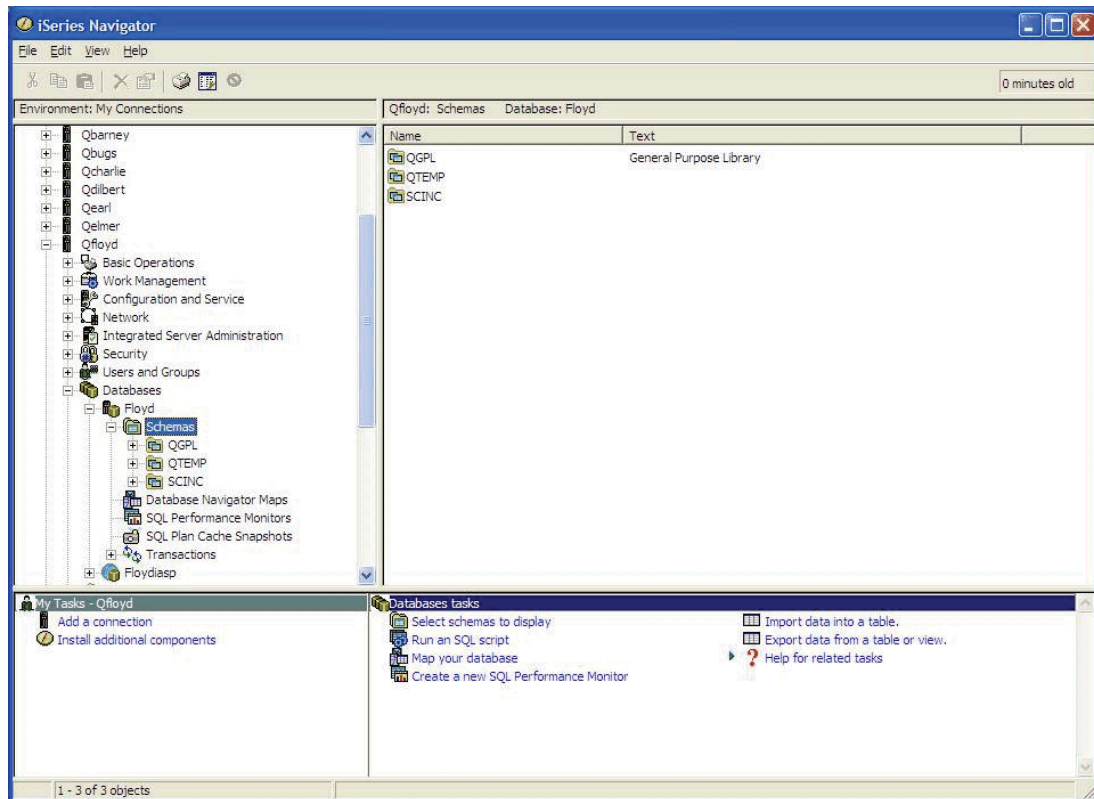
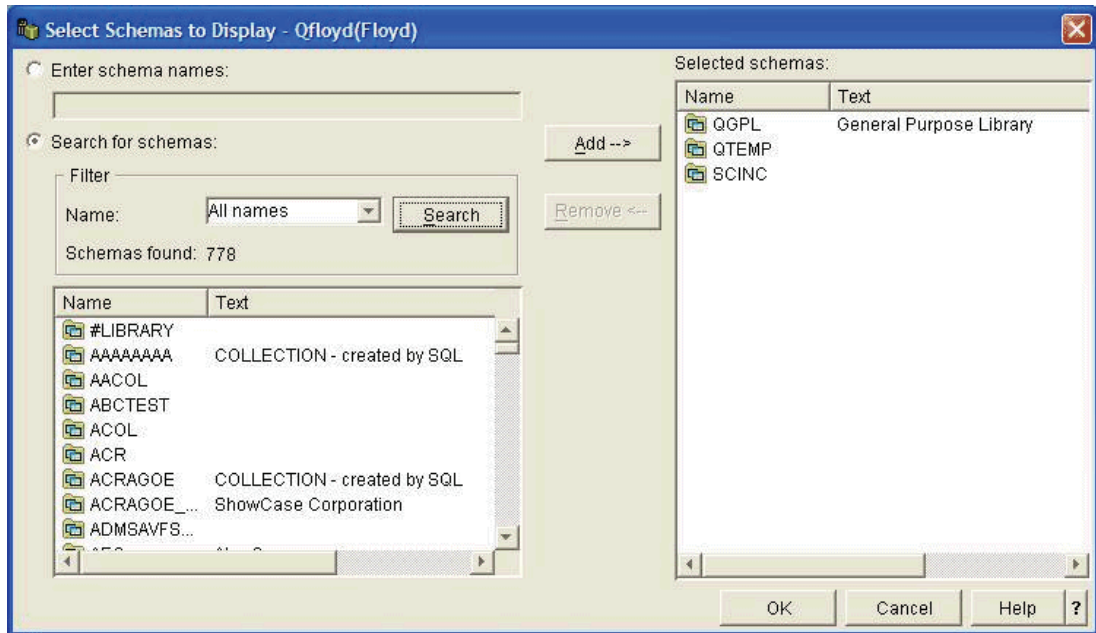


Figure 4-88
Select Schemas to Display dialog box



Installing and Uninstalling Client Components

The client installation program installs the following client components:

Table 5-1
Essbase components

Component	Description	Default Installation Folder
Essbase Analytic Services Client	The Essbase client installation includes the runtime client, common files, the Excel Spreadsheet Add-in, and the Essbase Application Program Interface (API).	<i>C:\Hyperion\products\Essbase11\EssbaseClient</i>
Essbase Administration Services (EAS) Console	The EAS Console connects you to the EAS server and allows you to perform administrative tasks.	<i>C:\Hyperion\products\Essbase11\eas\console</i>
Essbase Integration Services (EIS) Client	The EIS client integrates relational data into Analytic Services databases.	<i>C:\Hyperion\products\Essbase11\eis\console</i>

Before Installing Client Components

- See Chapter 3 for environment prerequisites.
- Before using client components, the server software must be installed and running. For more information, see Chapter 4.
- Make a note of the language selection (for example, English (US_ASCII)) specified for the server. The language selection for the client needs to match the language selection for the server.
- You must have system administrator privileges to install on Windows. Otherwise, parts of the installation will fail. For more information, see your Windows documentation.
- The Essbase for IBM i client installation uses the Oracle EPM System Installer. This chapter describes installation procedures for client software that will connect to an iSeries server. The Oracle documentation includes additional installation information, including help on installation screens, directories and files created, and troubleshooting. We recommend using this guide and the Oracle installation guides together when installing. Oracle installation documentation is available on the Oracle Web site at http://download.oracle.com/docs/cd/E12825_01/nav/portal_1.htm.

- We recommend uninstalling previous Essbase client programs unless you plan to continue using them. If you keep your previous Essbase applications, they are still accessible in the Hyperion Solutions program group via the Start menu. *Note:* New Essbase installations are accessible in the Oracle EPM System program group (Start > Programs > Oracle EPM System).
- Close all programs when installing Essbase software.

Installing Client Components

The Essbase for IBM i client installation uses the Oracle EPM System Installer, which is included on the installation DVDs. All of the files required to install the client components are included in the `\Windows` folder on the DVDs. The EPM System Installer simplifies the task of installing components in a distributed computing environment. You can install, configure, and validate any components you want on any computer. Once you have installed, configured, and validated the components on that machine, you can repeat the process on another machine.

Preparing the Installation Files

The client installation files are located on the DVDs in the `\Windows` folder. These zip files should be copied from the DVDs to a network folder or a temporary folder on the client computer (for example, `C:\Temp\EPM`).

To prepare the installation files:

1. Create a temporary folder to store the client installation files (`.zip`), either on a shared network drive or on each machine in your deployment. If you are installing from a network drive, you must map this drive. This directory is referred to as `\download_location` in this procedure.
2. Copy all of the files in the `\Windows` folder on the DVDs to your `\download_location`:
 - `V15966-01.zip` (Disk 1 of 2)
 - `V15977-01.zip` (Disk 1 of 2)
 - `V15981-01.zip` (Disk 1 of 2)
 - `V15982-01.zip` (Disk 1 of 2)
 - `V15983-01.zip` (Disk 1 of 2)
 - `V16189-01.zip` (Disk 2 of 2)
 - `V16190-01.zip` (Disk 2 of 2)
 - `V16191-01.zip` (Disk 2 of 2)
 - `V16192-01.zip` (Disk 2 of 2)
3. Unzip all of the files into the same directory (`\download_location`). If you are prompted that common components already exist, click Yes to overwrite the files.

Starting Installation

When performing an EPM installation, you can choose whether to install EPM System products by tier or by individual component. Select Choose components by tier to install the client components. Run EPM System Installer as an administrator.

Important: We recommend **disabling all antivirus software** before installing client components. Antivirus software may change file properties and prevent correct installation.

To install EPM System products:

1. Double-click *installTool.cmd* in the root directory to which you extracted the EPM System Installer files (*download_location*). EPM System Installer launches.
2. Review and complete each page of EPM System Installer, clicking Next to move to the next page.
3. When installation is complete, click Configure to configure the products using EPM System Configurator, or click Finish to close EPM System Installer.

If you had problems during the configuration or just choose to do the configuration at a later time after the installation, you can launch the configurator again by choosing Programs > Oracle EPM System > Foundation Services > EPM System Configurator from the Windows Start menu.

After Installation

When you install any Essbase program, an *Oracle EPM System* program folder will be accessible via the Start menu:

```
Start
  Programs
    Oracle EPM System
```

Uninstalling Essbase Client Components

Caution! When you uninstall EPM System products, EPM System Uninstaller removes everything from the installation directory. Before you uninstall, be sure to back up any files you want to keep that are in your *%HYPERION_HOME%* directory (the default is *C:\Hyperion*). For information about backing up files, see the *Oracle Hyperion Enterprise Performance Management System Backup and Recovery Guide* at http://download.oracle.com/docs/cd/E12825_01/nav/portal_1.htm.

You can uninstall this release of EPM System products using EPM System Uninstaller. When you uninstall EPM System products, EPM System Uninstaller:

- Stops and removes installed services.
- Un-deploys installed Web applications.
- Removes desktop icons and start menu icons.
- Clears the product installation directory of all files.
- Removes appropriate entries from the Windows registry.

EPM System Uninstaller does not remove entries from the Shared Services Registry. To remove information about uninstalled products from the Shared Services Registry, see the *Oracle Hyperion Enterprise Performance Management System Lifecycle Management Guide* at http://download.oracle.com/docs/cd/E12825_01/nav/portal_2.htm.

To uninstall EPM System products:

1. Choose a method:
 - In `%HYPERION_HOME%\uninstall`, double-click `uninstall.cmd`.
 - In the Windows Control Panel, select Add or Remove Programs, select Hyperion EPM System, and click Change/Remove.
 - From a Windows console, change to `%HYPERION_HOME%\uninstall\`, and then enter `uninstall.cmd`.
 - From the Start menu, select Programs > Oracle EPM System > Foundation Services > Uninstall EPM System.
2. Exit other programs before you continue, and then click Next.
3. Select the products to uninstall, and then click Next. All components of the selected products are uninstalled.
4. Confirm the components to uninstall, and then click Next. EPM System Uninstaller displays progress incrementally as each assembly's uninstallation is complete.

Note: To cancel the uninstallation, click Cancel. When you click Cancel, EPM System Uninstaller stops the uninstallation of the current assembly and rolls that assembly back to an installed state. It does not undo uninstallations for assemblies that were already uninstalled. EPM System Uninstaller indicates the success or failure of the uninstallation. If any part of the uninstallation failed, EPM System Uninstaller notes which assembly failed to uninstall. Check the log files for more information about the errors. You can find the log files in `%HYPERION_HOME%\logs\install`. There is a log file for each assembly, named `<product>-install.log`; for example, `hss-install.log`.

5. Click Finish to close EPM System Uninstaller.

Upgrading to Essbase 11.1.1 for IBM i

This appendix will help you upgrade your ShowCase Essbase 7.1 production environment to Essbase 11.1.1 for IBM i running on OS/400 V5R4 or V6R1. The procedures in this appendix help you reduce migration problems and downtime for your production data.

Note: Essbase 11.1.1 for IBM i should be installed into a separate directory when running on a system with ShowCase Suite 8.0.

Upgrade Overview

We recommend you go through the installation and upgrade process once for Essbase 11.1.1 for IBM i before proceeding with setting your production environment. Then if you encounter problems during the upgrade process, it will be easier for you and/or Technical Support to isolate the source of the problem. *Note:* An over-the-top installation is not supported.

You will follow these general steps:

1. Install Essbase 11.1.1 for IBM i. See Chapter 4 for instructions.
2. Without starting the server, follow the steps below to bring over your ShowCase Essbase 7.1 applications, security file, and content of the EIS 7.1 catalog into the 11.1.1 installation.

Documenting Your Upgrade

During your upgrade, we recommend documenting the actual steps you take on your iSeries and PCs, problems that occur, and how you resolved those problems. Documenting is useful for several reasons:

- If you reach a point where you cannot proceed without help, SPSS Technical Support can use your documentation to understand the background of the problem.
- Subsequent upgrades are more precise because the steps you took the first time are recorded. If you need to restart steps due to unforeseen circumstances or if you have multiple installations to upgrade, you will be prepared.

Notes:

- When you perform OS/400 operations, use a PC with a terminal emulator (iSeries Access, for example) so you can cut and paste iSeries commands and results into your word processor. This avoids having to retype commands.
- In Windows, to capture a bitmap image of the active window, you can use the key combination **Alt + PrtScn**. To capture the entire display screen, press **Ctrl + PrtScn**. Then paste the bitmap into your word processor.

Common Upgrade Questions

What versions of OS/400 does Essbase 11.1.1 for IBM i require?

Version 5 Release 4 (V5R4) or Version 6 Release 1 (V6R1).

From which version(s) can I upgrade to Essbase 11.1.1 for IBM i?

You can upgrade to Essbase 11.1.1 for IBM i from ShowCase Essbase 7.1 only.

Can Essbase 11.1.1 for IBM i client components connect to a 7.1 Essbase Server?

Essbase 11.1.1 for IBM i clients can only connect to the Essbase 11.1.1 for IBM i server. See Table A-1 below for server-client compatibility.

Can 7.1 client components connect to the Essbase 11.1.1 for IBM i server?

Yes. In general, older clients can connect to newer servers, but they cannot access the new server's functions or features. You must use the 11.1.1 clients to take advantage of the new client features.

Essbase 11.1.1 for IBM i Prerequisites

Important: Essbase for IBM i functions only with the proper prerequisites. Before you upgrade, verify that your hardware and software meet the environment requirements in Chapter 3.

Patch Requirements

To avoid problems unrelated to migration, install the latest ShowCase Essbase patches available for your current 7.1 version. For the latest patches, log on to the SPSS Technical Support site at <http://support.spss.com> and from your Product View, click ShowCase > Patches.

Server-Client Connection Compatibility

The following tables list the supported combinations of servers and clients. Any combinations not listed are not supported.

In general, older clients can connect to newer servers but cannot access new functions or features. For optimal migration, we recommend all products be at the latest levels.

Table A-1
Server-client connection compatibility

Server version	Client version
Essbase 11.1.1 for IBM i server	Essbase 11.1.1 for IBM i client

Table A-2
Client-server connection compatibility

Client version	Server version
Essbase 11.1.1 for IBM i client	Essbase 11.1.1 for IBM i server

Table A-3
Essbase-Warehouse Manager Client compatibility

Essbase version	ShowCase Suite client version
Essbase 11.1.1 for IBM i server	ShowCase Suite clients (Warehouse Manager Client, Warehouse Builder, Query/Report Writer) 8.0 (patch 8.00.350 or higher)

Establishing a Test Environment

Replicating Essbase 7.1 Objects in an Essbase 11.1.1 for IBM i Installation

The following sections explain how to move over some of your Essbase 7.1 objects to your 11.1.1 installation. In order to migrate users and groups for each application, you need to assign access permission of that application for the users and groups. After migration of the application, you must execute load data and calculation scripts.

What Information Is Migrated?

During migration, the following information can be migrated with the application:

- Databases and their objects (such as calculation scripts, report script, rules files, member select files, and Essbase Query Designer files). Data (.pag and .ind files) is not migrated.
- All database outlines (including member properties, outline properties, and formulas).
- Application and database properties, such as cache settings, with the exception of disk volumes.
- Users, groups, and passwords are migrated. After migration, you can edit user and group properties on the target server without affecting user and group permissions on the source server.
- Filters and their associations. You do not need to re-assign filters to users or groups after migration.
- Substitution variables.
- Linked reporting objects (LROs).
- Custom-defined functions.
- Custom-defined macros.

During migration, the following information is *not* migrated:

- Data (.pag and .ind files).
- Files that are not recognized as objects on Essbase Server, such as spreadsheet files, text files, MaxL script files, ESSCMD scripts, and so forth.

- The Essbase configuration file (*essbase.cfg*).
- Disk volumes.
- Copy partitions separately. For more information, see http://download.oracle.com/docs/cd/E10530_01/doc/epm.931/html_eashelp/cpypart.htm.
- Triggers.

Replicating Essbase Applications and Security Information

To replicate your production applications (or a subset of them) and security information, use the Administration Services Migration Wizard and follow the steps below. For details about the Migration Wizard, see Oracle's documentation at http://download.oracle.com/docs/cd/E12825_01/epm.111/eashelp/dbwzmigr.htm.

You must have Create/Delete Applications permissions for both the source and target Essbase Servers to use Migration Wizard. If you want to migrate users and groups, you also need Create/Delete Users and Groups permissions for the target server.

To replicate applications and security information:

1. Start Essbase 11.1.1 for IBM i Shared Services and Administration Services servers.
2. Start both ShowCase Essbase 7.1 and Essbase 11.1.1 for IBM i Analytic servers.
3. Connect to the Administration Services server from the Administration Services Console.
4. Add both Essbase 7.1 and Essbase 11.1.1 for IBM i Analytic servers to Essbase servers in the Administration Services Console.
5. Go to the File > Wizards > Migration menu in the Administration Services Console to start the Administration Services Migration Wizard.
6. Select Advanced in the User level drop box.
7. Enter the name of the Essbase 7.1 application to migrate in the Source application text box and the name of the application to be created on Essbase 11.1.1 in the Target application text box. Click Next.
8. Navigate through the dialog boxes, selecting the appropriate options for objects and security migration until the Finish button becomes enabled.
9. Click Finish.
10. Repeat steps 6 through 9 for each Essbase 7.1 application you want to migrate to Essbase 11.1.1 for IBM i.

Replicating Essbase Integration Server (EIS) Repository

To replicate the Integration Server repository, follow the steps below.

You can find more details, such as information on saving and restoring, in the *Essbase for IBM i Administrator's Guide*.

To replicate the objects:

1. Ensure the Essbase 7.1 Integration Services (EIS) Server and OLAP Server are running.
2. Connect to your EIS 7.1 server.
3. In the Essbase Integration Services (EIS) Console, from the File menu, select XML Import/Export. On the Export tab, select each OLAP model and metaoutline and export each one to a unique *.xml* file. Repeat this process for each database.

Note: You can save the *.xml* files to your local drive or to the iSeries integrated file system (IFS).

4. Proceed with the Essbase 11.1.1 for IBM i configuration, using the screen prompts as a guide. (For more information, see the topic “Configuring Server Installation” in Chapter 4 on p. 13.) Once the configuration is completed, complete the steps below.
5. Start and connect to both 11.1.1 Integration and Analytic servers.
6. In the Essbase Integration Services (EIS) Console, from the File menu, select XML Import/Export. On the Import tab, select each OLAP model and metaoutline you exported previously and import each one to the test environment.
7. In the Essbase Integration Services (EIS) Console, from the File menu, select Open. On the Existing tab, open each OLAP metaoutline, one at a time. Once a metaoutline is opened, from the Outline menu, select Member and Data load. Specify an application and database name. This creates an Essbase application/database in your test environment.

Repeat this process for each database.

Verify the Upgrade

Be sure Essbase for IBM i features work correctly in your environment. You should verify:

- All Essbase applications start properly.
- Essbase calculation runs properly.
- Essbase applications return valid reports.
- If you are also using ShowCase Warehouse Builder, verify that sets and definitions work properly.

1. Start the Essbase test server.

If you restored a subset of your applications, you may receive error messages in Application Manager when you attempt to work with applications you did not restore.

2. Open each rule file to verify the source tables and views referenced in the SQL statements correctly correspond to the tables in your test environment data warehouse.
3. If you used non-SQL references, you may need to update ESSCMD or MaxL scripts to reference the test environment tables or files.

Migrating Essbase 11.1.1 for IBM i to a New iSeries Server

Overview

Saving and restoring Essbase 11.1.1 for IBM i application information to different libraries on the same iSeries server is standard fare for typical customers. However, **migrating** or saving and restoring Essbase 11.1.1 for IBM i application information from one iSeries server to a new iSeries server is not a common occurrence. This appendix refers you to information about migrating an Essbase 11.1.1 for IBM i installation from one iSeries server to another iSeries server.

Prerequisites

The Essbase for IBM i server requires several iSeries server prerequisites to be in place in order to function properly. Refer to Chapter 3 for a list of prerequisites.

Migration Options

There are two methods for migrating the Essbase server, and associated databases, from one iSeries server to another:

- A full save and restore from the original iSeries server to the new iSeries server.
- Following Oracle's EPM 11.1.1.1 documentation on migrating applications, repositories, and other artifacts across operating systems.

Full iSeries Server Save and Restore

The Essbase 11.1.1 for IBM i environment is automatically migrated to the new iSeries server when the original iSeries server is replicated on the new iSeries server (full system save and restore).

Migrating the Essbase 11.1.1 for IBM i Environment Only

Refer to Oracle's EPM 11.1.1 *Lifecycle Management Guide* (at http://download.oracle.com/docs/cd/E12825_01/nav/portal_2.htm) for details on migrating your Essbase 11.1.1 for IBM i installation to a different system.

Upgrading to Web Analysis 11.1.1 for IBM i

Overview

Web Analysis 11.1.1 for IBM i is to be installed and run on the Windows platform. To upgrade to the 11.1.1 release, you will need to move the content of your ShowCase Analyzer 7.2 repository into Web Analysis 11.1.1 for IBM i on Windows. A temporary license for Analyzer 7.2 is required for Web Analysis migration. To acquire a temporary license for use during migration, contact Technical Support (<http://support.spss.com>) for a temporary license transfer form, complete the form, send it to the fax number shown on the form instructions, and wait for the temporary license to be sent to you.

New Features

For complete information about new features in Web Analysis 11.1.1 for IBM i, download the *Hyperion Reporting and Analysis New Features* document at http://download.oracle.com/docs/cd/E12825_01/index.htm. More information about Web Analysis 11.1.1 can be found at http://download.oracle.com/docs/cd/E12825_01/nav/portal_4.htm and within the online help of the application.

Unsupported Features

The following Analyzer 7.2 features will not be supported in Web Analysis 11.1.1 for IBM i:

Integrated Security. Since Web Analysis 11.1.1 for IBM i runs on the Windows platform, Web Analysis Security cannot be amended with iSeries security features. You can preserve Integrated Security groups and users that were defined in your Analyzer 7.2 installation during migration, but if you choose to do so they will be updated to Web Analysis security groups and users. See below for details.

ShowCase Data Models (SDM). ShowCase Data Models are not supported with Web Analysis 11.1.1 for IBM i. You will need to create corresponding Relational Connections after migrating to Web Analysis 11.1.1.

Migrating ShowCase Analyzer 7.2 Repository to Web Analysis 11.1.1 Repository

The migration of a ShowCase Analyzer 7.2 repository on iSeries to Windows is a two-step process. First, you need convert data in your 7.2 repository to the format compatible with the Web Analysis Migration Utility.

To achieve this, first perform a fresh Analyzer 7.2 installation, applying the latest regular patch available on the SPSS Support Web site, and then move the repository of your current production Analyzer 7.2 installation into the new installation using the SAVANZ and RSTANZ commands. Refer to the ShowCase Analyzer 7.2 documentation for details on how to use SAVANZ and RSTANZ to move the Analyzer repository to a different installation.

After you move the repository of your current production Analyzer 7.2 installation to the new installation, you will need to download the *anzmgrutil.svf* save file from the SPSS Support Web site and restore components from that file into the new installation. Please refer to the SPSS Support Web site (<http://support.spss.com>) for information about the save file location.

Converting Analyzer 7.2 Repository Data

1. First perform a fresh Analyzer 7.2 installation and apply the latest regular patch available on the SPSS Support Web site.
2. Move the repository of your current production Analyzer 7.2 installation into the new installation using the SAVANZ and RSTANZ commands.
3. Replicate the SPSS_CRED table from your Analyzer production installation by executing the following commands:

```
CRSAVF FILE(NewAnzLib/SaveFileName)

SAVOBJ OBJ(SPSS_CRED)
LIB(ProdAnzLib) DEV(*SAVF)
OBJTYPE(*FILE) SAVF(NewAnzLib/SaveFileName)

RSTOBJ OBJ(SPSS_CRED)
SAVLIB(ProdAnzLib) DEV(*SAVF)
OBJTYPE(*FILE)
SAVF(NewAnzLib/SaveFileName) MBROPT(*ALL)
ALWOBJDIF(*ALL)
RSTLIB(NewAnzLib)
```

4. Download the *anzmgrutil.svf* save file from the SPSS Support Web site and place it into the <*NewAnzLib*> library on your iSeries system. You can download the patch at the SPSS Support Web site at <http://support.spss.com>.
5. Restore the content of *anzmgrutil.svf* into the <*NewAnzLib*> library using the command shown below. Two save files will be restored: *ANZMGRUQSY* and *ANZMGRUJAR*.

```
RSTOBJ OBJ(*ALL) SAVLIB(QTEMP) DEV(*SAVF) OBJTYPE(*FILE)
SAVF(NewAnzLib/ANZMGRUTIL) MBROPT(*ALL) ALWOBJDIF(*ALL) RSTLIB(NewAnzLib)
```

6. Verify that the Analyzer server in your new installation is not running.

7. Execute the commands shown below to restore components from *ANZMGRUQSY* and *ANZMGRUJAR* save files into your Analyzer installation.

```
RST DEV('/qsys.lib/NewAnzLib.lib/ANZMGRUJAR.file')
OBJ('/tmp/AnalyzerAppServer.jar' *INCLUDE
'/NewAnzLib/lib/Analyzer/Web-inf/lib/AnalyzerAppServer.jar')
ALWOBJDIF(*ALL)

RSTOBJ OBJ(*ALL) SAVLIB(QTEMP)
DEV(*SAVF)
SAVF(NewAnzLib/ANZMGRUQSY)
MBROPT(*ALL) ALWOBJDIF(*ALL)
RSTLIB(NewAnzLib)
```

8. Execute the following command:

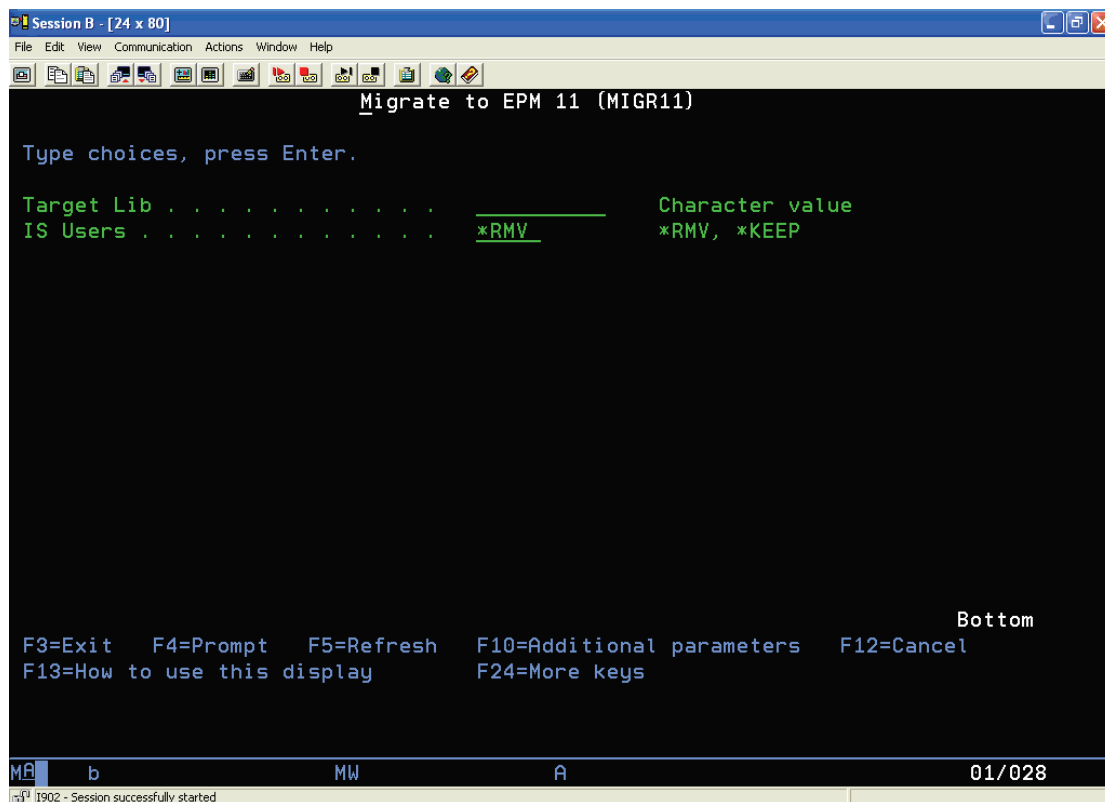
```
CHGCMD CMD(NewAnzLib/MIGR11) PGM(NewAnzLib/MIGR11)
HLPPNLGRP(NewAnzLib/ANZPNLGRP)
```

9. Change the current library to your new Analyzer 7.2 installation:

```
CHGCURLIB CURLIB(NewAnzLib)
```

10. Without starting the server, run the MIGR11 command.

Figure C-1
Migrate to EPM 11 (MIGR11 command)



There are two parameters for the MIGR11 command. For help, put the cursor on a parameter name and press F1.

- The Target Lib parameter specifies the name of the library to be created during MIGR11 execution. The library name should not already exist. The created repository will be populated with data read from the Analyzer 7.2 repository and processed to make it compatible with the Web Analysis Migration Utility used in the next topic.
- The IS Users parameter determines whether the Analyzer 7.2 Integrated Security groups and users are discarded during MIGR11 execution or converted to Web Analysis security groups and users. Specify *RMV for this parameter if you want Integrated Security groups and users removed or specify *KEEP to preserve and convert them to Web Analysis security groups and users.

Moving Converted Data to Repository on Windows

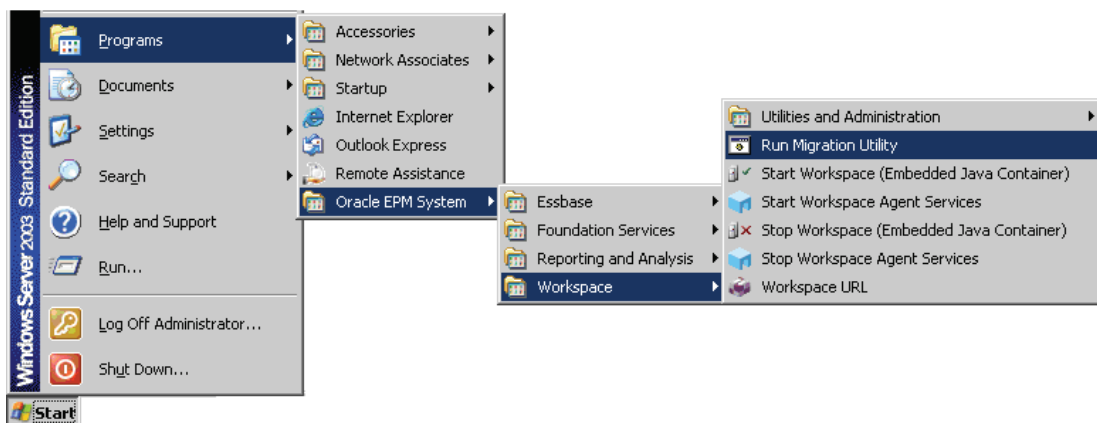
To move data from the repository created in the previous topic, you will need to use the Web Analysis 11.1.1 Migration Utility.

In general, see the Oracle-Hyperion documentation for complete information about migrating repositories from previous releases. You can find the *Hyperion Reporting and Analysis Migration Utility Guide* on the Oracle Web site at http://download.oracle.com/docs/cd/E12825_01/nav/portal_4.htm. The only requirement specific to the Web Analysis for IBM i release is that you must use the IBM *AS400JDBCdriver* JDBC driver for iSeries with the Migration Utility.

To use the Migration Utility:

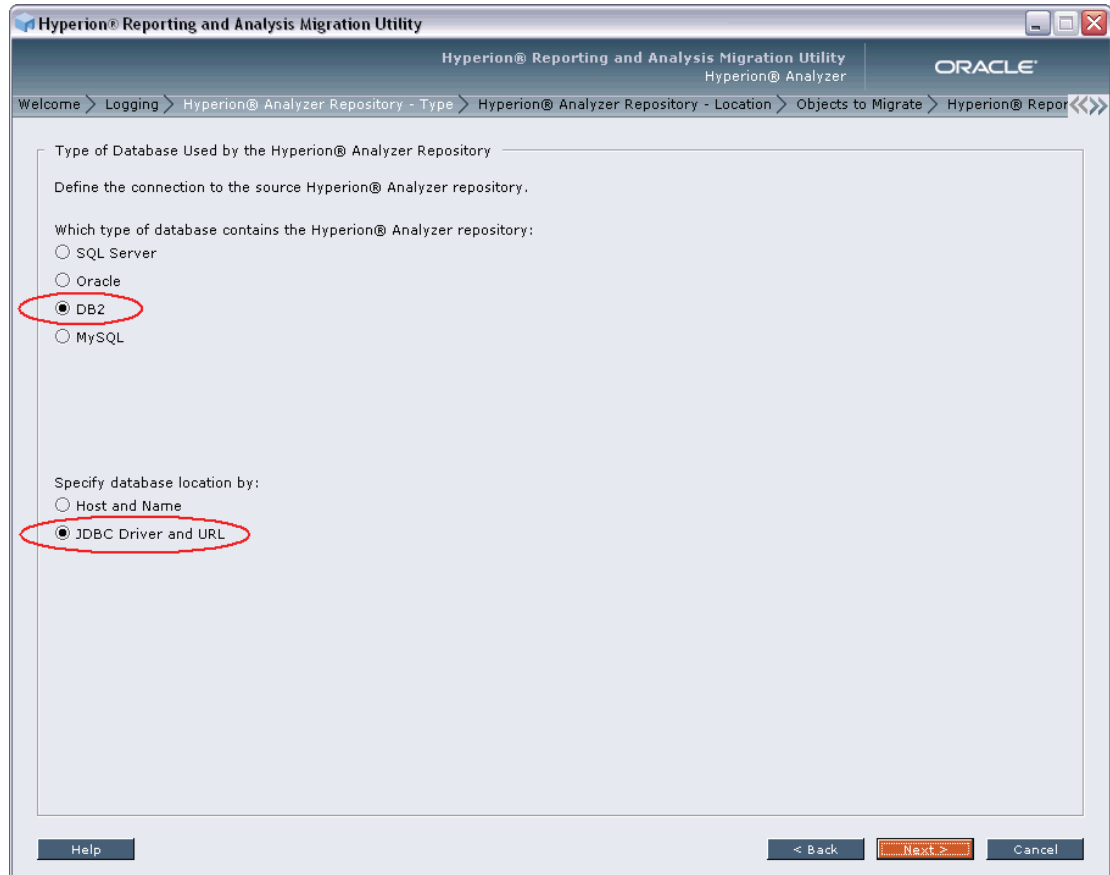
1. Download the *jt400.jar* file from the SPSS Support Web site or from <http://www-1.ibm.com/servers/eserver/iseries/toolbox/downloads.htm>.
2. Create a *\jt400* directory on the PC where Web Analysis 11.1.1 for IBM i is installed.
3. Start the Migration Utility. To start the Migration Utility on Windows, from the Start menu, choose Programs > Oracle EPM System > Workspace > Run Migration Utility, as shown below.

Figure C-2
Starting the Migration Utility



4. After starting the Migration Utility, you will navigate through a sequence of screens. On the Hyperion Analyzer Repository Type tab, select DB2 for the Analyzer repository database type and JDBC Driver and URL for the database location method, as shown below.

Figure C-3
Hyperion Analyzer Repository Type tab



5. Click Next after making your selections on the Type tab.
6. On the Hyperion Analyzer Repository Location tab, browse to the *jt400.jar* file on your PC for the Native JDBC Driver Path.
7. Enter `com.ibm.as400.access.AS400JDBCdriver` for the JDBC Driver.
8. Specify the JDBC URL using the following format:
`jdbc:as400://<iSeriesName>/<Anz72Repository>`. See below for an example of how the entries should be completed on this tab.

Figure C-4
Hyperion Analyzer Repository Location tab

Hyperion® Reporting and Analysis Migration Utility

Hyperion® Reporting and Analysis Migration Utility
Hyperion® Analyzer

ORACLE

Welcome > Logging > Hyperion® Analyzer Repository - Type > Hyperion® Analyzer Repository - Location > Objects to Migrate > Hyperion® Reporter

Location of the Hyperion® Analyzer Repository Database

Define the connection to the source Hyperion® Analyzer repository.

Native JDBC Driver Path:
C:\jt400\jt400.jar

Note: not necessary for DataDirect drivers

JDBC Driver:
com.ibm.as400.access.AS400JDBCdriver

Note: It is impossible to switch to another external JDBC driver with the same name when it has already been loaded.

JDBC URL:
jdbc:as400://iSeriesName/AnzRepos

User ID:
iSeriesUserName

Password:

9. On the Hyperion Reporting and Analysis Repository Database Location tab, select Host and Name for the database location method, as shown below.

Figure C-5
Hyperion Reporting and Analysis Repository Database Location tab

Hyperion® Reporting and Analysis Migration Utility

Hyperion® Reporting and Analysis Migration Utility
Hyperion® Analyzer

ORACLE

Hyperion® Reporting and Analysis Repository Database - Type > Hyperion® Reporting and Analysis Repository Database - Location <<<

Type of Database Used by the Hyperion® Reporting and Analysis Repository

Define the connection to the target Hyperion® Reporting and Analysis Repository.

Which type of database contains the Hyperion® Reporting and Analysis Repository:

- SQL Server
- Oracle
- DB2

Specify database location by:

- Host and Name
- JDBC Driver and URL

Help < Back Next > Cancel

Log Files

Overview

This appendix describes log files for the installation, configuration, and applications. The appendix contains these sections:

- “Installation Log Files” on p. 87.
- “Configuration Log Files” on p. 91.
- “Application Log Files” on p. 95.
- “Setting Log Levels” on p. 96.

Log files for most EPM System products are created in `<esslib>/Hyperion/logs/<product>`. For example, Shared Services logs are created in `<esslib>/Hyperion/logs/SharedServices9`. Some products may write log files to both common and other folders. For more information about log files, see the *Oracle Hyperion Enterprise Performance Management System Installation and Configuration Troubleshooting Guide* at http://download.oracle.com/docs/cd/E12825_01/epm.111/epm_install_troubleshooting_11111.pdf.

Installation Log Files

Shared Services

- ▶ **File:** `<esslib>/Hyperion/logs/install/hss-install.log`

This file logs the status messages of copying all Shared Services files and folders to the installation location.

Start installation: The following message indicates that the installation of HSS started: Start sharedServices. ASCII file `<esslib>/Hyperion/products/Foundation/AppServer/InstallableApps/common/CMS.properties` does not exist and will be created.

Stop installation: The following message indicates that the installation of HSS completed successfully: Writing product audit XML for foundation: 9.5.0.0.

Exceptions/errors: The log file may contain these exceptions that can be ignored:

- `java.io.IOException: entry 89c2bdc7a7a66e9008e1837d2b49c28e/writeProductInfo_defaultConfig does not exist in <HIT_INSTALLER>/assemblies/sharedServices/9.5.0.0/assembly.dat.`
- `java.io.IOException: entry 89c2bdc7a7a66e9008e1837d2b49c28e/writeProductInfo_dependencyFile does not exist in <HIT_INSTALLER>/assemblies/sharedServices/9.5.0.0/assembly.dat.`

If any other exception or error is present, then the installation may have not completed successfully.

Administration Services

- ▶ **File:** `<esslib>/Hyperion/logs/install/eas-install.log`

This file logs the status messages of copying all EAS files and folders to the installation location.

Start installation: The following message indicates that the installation of EAS started: Start `essbase_administration_services_webapp`. Start installing `easMigrationFiles`. Unzipping files for `outputDir: <esslib>/Hyperion/products/Essbase11/eas/server/migrationutility`.

Ignore messages: Ignore messages starting with `Can not find feature with id=...`

Stop installation: The following message indicates that the installation of EAS completed successfully: Copying upgrade scripts to the `<esslib>/Hyperion/upgrades/eas`. Stop `analytic_services_provider_webapp`. Writing product audit XML for `eas: 9.5.0.0`.

Exceptions/errors: The log file should not contain any exceptions or errors. If any exceptions or errors are present, then the installation may have not completed successfully.

Integration Services

- ▶ **File:** `<esslib>/Hyperion/logs/install/eis-install.log`

This file logs the status messages of copying all EIS files and folders to the installation location.

Start installation: The following message indicates that the installation of EIS started: Start `essbase_integration_services`. Directory `<esslib>/Hyperion/products/Essbase11/eis/server/eis_readme_files` does not exist.

Ignore messages: Ignore messages starting with `Can not find feature with id=...`

Stop installation: The following message indicates that the installation of EIS completed successfully: Writing product audit XML for `eis: 9.5.0.0`.

Exceptions/errors: The log file may contain these exceptions that can be ignored:

- `Install, com.installshield.wizardx.actions.ExecWizardAction, err, java.lang.NullPointerException`
`STACK_TRACE: 10`
- `java.lang.NullPointerException`
at `java.lang.Throwable.<init>(Throwable.java:181)`
at `java.lang.Exception.<init>(Exception.java:29)`
at `java.lang.RuntimeException.<init>(RuntimeException.java:32)`
at `java.lang.NullPointerException.<init>(NullPointerException.java:36)`
at `com.installshield.util.ProcessExec.executeProcess(Unknown Source)`
at `com.installshield.wizardx.actions.ExecWizardAction.executeProcess(Unknown Source)`
at `com.installshield.wizardx.actions.ExecWizardAction.run(Unknown Source)`
at `java.lang.Thread.run(Thread.java:595)`

If any other exception or error is present, then the installation may have not completed successfully.

Analytic Services

- ▶ **File:** `<esslib>/Hyperion/logs/install/essbaseserver-install.log`

This file logs the status messages of copying all EssbaseServer files and folders to the installation location.

Start installation: The following message indicates that the installation of Essbase Server started: Start essbase_services. Start installing bid_essbaseApi_common. Unzipping files for outputDir: `<esslib>/Hyperion/products/Essbase11/EssbaseServer/docs`.

Ignore messages:

- Ignore messages starting with Can not find feature with id=....
- bid_essbaseApi_common skipped: no files to unzip.

Stop installation: The following message indicates that the installation of Essbase Server completed successfully: Writing product audit XML for EssbaseServer: 9.5.0.0.

Exceptions/errors: The log file should not contain any exceptions or errors. If any exceptions or errors are present, then the installation may have not completed successfully.

- ▶ **File:** `<esslib>/Hyperion/logs/install/essbaseadditional-install.log`

This file logs the status messages of copying all additional files and folders for Essbase Additional to the installation location.

Start installation: The following message indicates that the installation of Essbase Additional started: Running ActivateProductFeatures... Start essbaseAddins.

Stop installation: The following message indicates that the installation of Essbase Additional completed successfully: Stop essbaseAddins.

Exceptions/errors: The log file should not contain any exceptions or errors. If any exceptions or errors are present, then the installation may have not completed successfully.

- ▶ **File:** `<esslib>/Hyperion/logs/install/essbaseclient-install.log`

This file logs the status messages of copying all Essbase Client files and folders to the installation location.

Start installation: The following message indicates that the installation of Essbase Client started: Start essbase_client. Trying to init MappingTreeHelper with `<esslib>/Hyperion`.

Ignore messages: Ignore messages starting with Can not find feature with id=...

Stop installation: The following message indicates that the installation of Essbase Client completed successfully: Writing product audit XML for essbase: 9.5.0.0.

Exceptions/errors: The log file should not contain any exceptions or errors. If any exceptions or errors are present, then the installation may have not completed successfully.

Provider Services

- ▶ **File:** `<esslib>/Hyperion/logs/install/aps-install.log`

This file logs the status messages of copying all APS files and folders to the installation location.

Start installation: The following message indicates that the installation of APS started: Start analytic_services_provider_webapp. Start installing bid_APSbinFiles8. Unzipping files for outputDir: /<esslib>/Hyperion/products/Essbase11/aps/bin.

Stop installation: The following message indicates that the installation of APS completed successfully: Copying upgrade scripts to the /<esslib>/Hyperion/upgrades/aps. Stop analytic_services_provider_webapp. Writing product audit XML for aps: 9.5.0.0.

Exceptions/errors: The log file should not contain any exceptions or errors. If any exceptions or errors are present, then the installation may have not completed successfully.

Common Components

- ▶ **File:** /<esslib>/Hyperion/logs/install/common-install.log
This file logs the status messages of copying all products related documents/help files and folders to the installation location.

Start installation: The following message indicates that the installation of Common Components started: Start commonComponents. Start installing ant1_6_0RuntimeFiles. Unzipping files for outputDir: /<esslib>/Hyperion/common/utilities/Ant/1.6.0.

Ignore messages:

- Those starting with Can not find feature with id= ...
- Skipped: No files to unzip.

Stop installation: The following message indicates that the installation of Common Components completed successfully: Finish installing epmstageFiles1. Stop commonComponents.

Exceptions/errors: The log file should not contain any exceptions or errors. If any exceptions or errors are present, then the installation may have not completed successfully.

- ▶ **File:** /<esslib>/Hyperion/logs/install/common-product-install.log
This file logs the status messages of copying all common components for products such as OpenLDAP and so on to the installation location.

Start installation: The following message indicates that the installation of Common Product started: Start essbaseProductCommonComponents. Unzipping files for outputDir: /<esslib>/Hyperion/common/CLS/9.5.0.0.

Ignore messages: Skipped: no files to unzip.

Stop installation: The following message indicates that the installation of Common Product completed successfully: Stop productCommonComponents. Writing product audit XML for foundation: 9.5.0.0.

Exceptions/errors: The log file should not contain any exceptions or errors. If any exceptions or errors are present, then the installation may have not completed successfully.

- ▶ **File:** /<esslib>/Hyperion/logs/install/common-essbase-product-install.log
This file logs copies documents/help files to the installation location.

Start installation: The following message indicates that the installation of Common Essbase Product started: Start essbaseProductCommonComponents. Start installing essbaseJavaApiFiles. Unzipping files for outputDir: /<esslib>/Hyperion/common/EssbaseJavaAPI/9.5.0.0.

Ignore messages: Skipped: no files to unzip.

Stop installation: The following message indicates that the installation of Common Essbase Product completed successfully: Finish installing EssbaseRtcAixFiles3. Stop essbaseProductCommonComponents.

Exceptions/errors: The log file should not contain any exceptions or errors. If any exceptions or errors are present, then the installation may have not completed successfully.

Tools Log Files

- ▶ **File:** /<esslib>/Hyperion/logs/install/tools-install.log
This file logs the status messages of copying all third-party component files and folders such as JDBC, JAXP, and JAXM the installation location.

Start installation: The following message indicates that the installation of Tools started: Start installing configToolFiles. Unzipping files for outputDir: /<esslib>/Hyperion/common/config/9.5.0.0.

Stop installation: The following message indicates that the installation of Tools completed successfully: Stop tools. Writing product audit XML for foundation: 9.5.0.0.

Exceptions/errors: The log file should not contain any exceptions or errors. If any exceptions or errors are present, then the installation may have not completed successfully.

Other Log Files

- ▶ **File:** /<esslib>/Hyperion/logs/install/installTool-install-stderr.log
Logs error messages thrown during installation.

Ignore messages: java.io.FileNotFoundException: No such path or directory. /QIBM/InstallTool.properties.

- ▶ **File:** /<esslib>/Hyperion/logs/install/installTool-install-stdout.log
Logs installation status of all the components.

The log file should not contain any exceptions or errors. If any exceptions or errors are present, then the installation may have not completed successfully.

Configuration Log Files

- ▶ **File:** /<esslib>/Hyperion/logs/config/configtool.log
This file logs the configuration status messages for all of the components.

Shared Services

HSS configuration includes configuration of the database, common setting, and application deployment.

- ▶ **File:** `<esslib>/Hyperion/logs/config/configtool.log`
This file logs the configuration status messages for all of the components.

Database

Start configuration: The following messages indicate that Shared Services database configuration started: JDBC driver class is com.ibm.db2.jdbc.app.DB2Driver [If iSeriesDB2 is selected]. Connection URL: jdbc:db2:*LOCAL/\$SchemaName. validate CREATE_NEW, no registry DB exists, create it. validate CREATE_NEW, no registry DB exists, done with create [i.e created tables for new installation]

Ignore messages:

- Ignore messages starting with Product hmb not selected
- DB component doesn't exist for product

Stop configuration: The following message indicates that Shared Services database configuration completed successfully: Successfully created registry. Committing registry settings to Foundation xml...

Exceptions/errors: The log file may contain these exceptions that can be ignored: Query has failed, at least one of the two 9.5 tables SMA_APPLICATION_CONFIG_MAP and SMA_GLOBAL_SETTING does not exist.

If any other exception or error is present, then Shared Services database configuration may have not completed successfully.

Common Setting

Start configuration: The following message indicates that common setting configuration started: Enable SSL:<Value entered by user> [True or false]

Stop configuration: The following message indicates that common setting configuration completed successfully: Value of "enable_windows_services" property: false

Exceptions/errors: If any exception or error is present, then common setting configuration may have not completed successfully.

Application Deployment

Start configuration: The following messages indicate that Shared Services deployment configuration started: Websphere6: Creating server... Deployment dir: `<esslib>/Hyperion/deployments/WebSphere6` Websphere6: Server created. Installation of interop started.

Ignore messages: Not Setting JVM args for server: Foundation

Stop configuration: The following message indicates that Shared Services deployment completed successfully: Application interop installed successfully. Websphere6: deploying archive file done. Executing: `sh <esslib>/Hyperion/deployments/WebSphere6/bin/start$HSSServerName` SharedServices9 server is up.

Exceptions/errors: If any exception or error is present, then Shared Services application deployment may have not completed successfully.

Administration Services

EAS configuration includes configuration of database, registration with Shared Services, and application deployment.

- **File:** `/<esslib>/Hyperion/logs/config/configtool.log`
This file logs the configuration status messages for all of the components.

Database

Start configuration: The following messages indicate that registration of EAS with Shared Services started: Authenticate admin user to CSS. user admin authenticated. EasHubConfigurator constructed. Registering the application, *LOCAL.

Stop configuration: The following messages indicate that registration of EAS with Shared Services completed successfully: Successfully registered the application, *LOCAL.

Exceptions/errors: If any exception or error is present, then registration of EAS with Shared Services may have not completed successfully.

Registration with Shared Services

Start configuration: The following messages indicate that registration of EAS with Shared Services started: Authenticate admin user to CSS user admin authenticated EasHubConfigurator constructed Registering the application, *LOCAL

Stop configuration: The following messages indicate that registration of EAS with Shared Services completed successfully: Successfully registered the application, *LOCAL

Exceptions/errors: If any exception or error is present, then registration of EAS with Shared Services may have not completed successfully.

Application Deployment

Start configuration: The following messages indicate that EAS deployment configuration started: Websphere6: Creating server... Deployment dir: `/<esslib>/Hyperion/deployments/WebSphere6` Websphere6: Server created. Installation of eas started.

Stop configuration: The following message indicates that EAS deployment completed successfully: Application eas installed successfully. Websphere6: deploying archive file done. Executing: `sh /<esslib>/Hyperion/deployments/WebSphere6/bin/start$EasServerName`.

Exceptions/errors: If any exception or error is present, then EAS deployment may have not completed successfully.

Analytic Services

Essbase Analytic Services configuration includes registration with shared services and custom configuration.

- **File:** `/<esslib>/Hyperion/logs/config/configtool.log`
This file logs the configuration status messages for all of the components.

Registration with Shared Services

Shared Services must be up and running for registration.

Start configuration: The following messages indicate that registration of Essbase Services with Shared Services started: Authenticate admin user to CSS. user admin authenticated. EasHubConfigurator constructed. Loading audit info from '<esslib>/Hyperion/common/config/9.5.0.0/product/essbaseserver/9.5.0.0/essbaseserver_1_audit.xml' file.

Stop configuration: The following message indicates that registration of Essbase Services with Shared Services completed successfully: Server being config'd for HSS mode.

Exceptions/errors: If any exception or error is present, then registration of Essbase Services with Shared Services may have not completed successfully.

Custom Configuration

Start configuration: The following messages indicate that custom configuration started: Successfully processed '<esslib>/Hyperion/products/Essbase11/EssbaseServer/bin/essbase.cfg' file! Agent Port is : <Value of Essbase Port>

Ignore messages: java.io.IOException: A connection with a remote socket was reset by that socket.

Stop configuration: The following messages indicate that custom configuration completed successfully: MAXL Process ended with exitValue: 0. Exiting EssbaseAgentTaskProcessor.execute().

Exceptions/errors: If any exception or error is present, then custom configuration may have not completed successfully.

Provider Services

- ▶ **File:** '<esslib>/Hyperion/logs/config/configtool.log'
This file logs the configuration status messages for all of the components.

Registration with Shared Services

Start configuration: Shared Services must be up and running for registration. The following messages indicate that registration of APS with Shared Services started: Authenticate admin user to CSS. user admin authenticated. APS HubConfigurator constructed. Registering the product, APS-9.5.0.

Stop configuration: The following messages indicate that registration of APS with Shared Services completed successfully: Successfully registered the product. APS-9.5.0 Loading '<esslib>/Hyperion/products/Essbase11/aps/data/APS.instance' file content... Content has been loaded successfully!

Exceptions/errors: If any exception or error is present, then registration of APS with Shared Services may have not completed successfully.

Application Deployment

Start configuration: The following messages indicate that APS deployment configuration started: APS Application Server Configuration. Deployment dir: /<esslib>/Hyperion/deployments/WebSphere6 Websphere6: Server created. Installation of aps started.

Stop configuration: The following message indicates that APS deployment completed successfully: Application aps installed successfully. Websphere6: deploying archive file done. Executing: sh /<esslib>/Hyperion/deployments/WebSphere6/bin/start\$APSServerName

Exceptions/errors: If any exceptions or errors are present, then APS deployment may have not completed successfully.

Application Log Files

Shared Services

- ▶ **File:** /<esslib>/Hyperion/deployments/WebSphere6/profile/logs/SharedServices9/SystemOut.log
This file logs all messages, including start and stop sequences, of the Shared Services server.
- ▶ **File:** /<esslib>/Hyperion/deployments/WebSphere6/profile/logs/SharedServices9/stopServer.log
This log file tracks the events and messages generated during shutdown sequence of the Shared Services server.

Ignore messages: com.hyperion.eie.common.cms.CMSException: error.generalSaveModel at com.hyperion.eie.common.cms.CMSFacade.saveProductPublishedModel (Unknown Source).

- ▶ **Files:** The following log files contain application-specific messages. The level of detail depends on the log level set.

```

/<esslib>/Hyperion/logs/registry/registry.log
/<esslib>/Hyperion/logs/SharedServices9/SharedServices_Admin.log
/<esslib>/Hyperion/logs/SharedServices9/SharedServices_Audit.log
/<esslib>/Hyperion/logs/SharedServices9/SharedServices_Hub.log
/<esslib>/Hyperion/logs/SharedServices9/SharedServices_LCM.log
/<esslib>/Hyperion/logs/SharedServices9/SharedServices_Memory_Profiler.log
/<esslib>/Hyperion/logs/SharedServices9/SharedServices_Metadata.log
/<esslib>/Hyperion/logs/SharedServices9/SharedServices_Security.log
/<esslib>/Hyperion/logs/SharedServices9/SharedServices_Security_Upgrade.log
/<esslib>/Hyperion/logs/SharedServices9/SharedServices_SyncOpenLDAP.log
/<esslib>/Hyperion/logs/SharedServices9/SharedServices_Taskflow.log
/<esslib>/Hyperion/logs/SharedServices9/SharedServices_Taskflow_CMDExecute.log
/<esslib>/Hyperion/logs/SharedServices9/SharedServices_Taskflow_Optimize.log

```

Administration Services

- ▶ **File:** /<esslib>/Hyperion/deployments/WebSphere6/profile/logs/eas/SystemOut.log
This file logs all messages, including start and stop sequences, of the EAS server.
- ▶ **File:** /<esslib>/Hyperion/deployments/WebSphere6/profile/logs/eas/stopServer.log

This log file tracks the events and messages generated during the shutdown sequence of the EAS server.

- ▶ **File:** `/<esslib>/Hyperion/logs/eas/easserver.log`
This log file contains messages that are sent and received by the EAS server from the EAS client.
- ▶ **File:** `/<esslib>/Hyperion/logs/eas/hbrserver.log`
This log file contains messages specific to business rules.

Provider Services

- ▶ **File:** `/<esslib>/Hyperion/deployments/WebSphere6/profile/logs/aps/SystemOut.log`
This file logs all messages, including start and stop sequences, of the APS server.
- ▶ **File:** `/<esslib>/Hyperion/deployments/WebSphere6/profile/logs/aps/stopServer.log`
This log file tracks the events and messages generated during shutdown sequence of the APS server.

Integration Services

- ▶ **File:** `/<esslib>/Hyperion/logs/eis/olapisvr.log`

Analytic Services

- ▶ **Files:** `/<esslib>/Hyperion/logs/Essbase/ESSBASE.LOG`
`/<esslib>/Hyperion/logs/Essbase/essbase_service.log`
`/<esslib>/Hyperion/logs/Essbase/SharedServices_Security_Client.log`
`/<esslib>/Hyperion/logs/Essbase/app/$ApplicationName.log`

Other Log Files

- ▶ **Files:** `/<esslib>/Hyperion/deployments/WebSphere6/logs/execStartaps.log`
`/<esslib>/Hyperion/deployments/WebSphere6/logs/execStarteas.log`
`/<esslib>/Hyperion/deployments/WebSphere6/logs/execStartSharedServices9.log`
`/<esslib>/Hyperion/deployments/WebSphere6/profile/logs/ffdc/eas_exception.log`
`/<esslib>/Hyperion/deployments/WebSphere6/profile/logs/ffdc/server1_exception.log`
`/<esslib>/Hyperion/deployments/WebSphere6/profile/logs/ffdc/SharedServices9_exception.log`

Setting Log Levels

You can specify the kinds of messages that are written to the logs, such as DEBUG, ERROR, or WARN. A higher level of reporting, such as DEBUG, can assist in resolving issues but can also increase file size and reduce overall system performance. Consequently, Oracle recommends that you use the least verbose logging level required. Revert to the original log levels after troubleshooting is complete to avoid using too much disk space and negatively affecting performance. You can modify the files described here to configure the log-level settings for Essbase for IBM i.

EPM System Configurator

File: `<esslib>/Hyperion/common/config/9.5.0.0/log4j.properties`

Modifications required: Change value of WARN to DEBUG to log all messages.

Shared Services

File: `<esslib>/Hyperion/deployments/websphere6/sharedservices9/config/CSS.xml`

Modifications required: Change value of WARN to DEBUG (within `<priority>` tags) to log all messages.

File: `<esslib>/Hyperion/deployments/websphere6/sharedservices9/config/DBPool.properties`

Modifications required: Set the trace value to true and change traceLocation (for example, `hss.trace` and `hss.traceLocation`).

File: `<esslib>/Hyperion/deployments/websphere6/sharedservices9/config/Domain-Migration.xml`

Modifications required: Set the value of `logger-level` to 7 to log all messages. See the table below for the log-level settings.

Log level	Setting
EMERGENCY	0
CRITICAL	1
ERROR	2
WARNING	4
INFO	6
DEBUG	7

File: `<esslib>/Hyperion/deployments/websphere6/sharedservices9/config/Domain.xml`

Modifications required: Set the value of `logger-level` to 7 to log all messages. See the table below for the log-level settings.

Log level	Setting
EMERGENCY	0
CRITICAL	1
ERROR	2
WARNING	4
INFO	6
DEBUG	7

File: `<esslib>/Hyperion/deployments/websphere6/sharedservices9/config/HSSLogger.properties`

Modifications required: Change value of WARN to DEBUG to log all messages.

File: `<esslib>/Hyperion/deployments/websphere6/sharedservices9/config/log.xml`

Modifications required: Change param `name="Threshold" value="info"` to param `name="Threshold" value="debug"` (two occurrences) and `priority value="info"` to `priority value="debug"` to log all messages.

File: `<esslib>/Hyperion/deployments/websphere6/sharedservices9/config/slide.properties`

Modifications required: Change `org.apache.slide.debug` from `false` to `true` to log all messages.

File:

`/<esslib>/Hyperion/deployments/websphere6/sharedservices9/config/WorkflowEngine.properties`

Modifications required: Change `workflowEngine.ces.logPerformanceStatus=` from `FALSE` to `TRUE` to log all messages.

Administration Services

File: `/<esslib>/hyperion/products/Essbase11/eas/server/OlapAdmin.properties`

Modifications required: Change `LogLevel` from `5000` to `9999` to log everything. See the table below for the log-level settings.

Log level	Setting
EVERYTHING	9999
XML_TRACE	9000
TRACE	6000
INFO	5000
EXCEPTION	4000
WARNING	3000
ERROR	2000
NONE	0
CRITICAL	1000

File: `/<esslib>/Hyperion/products/Essbase11/eas/HBRClient.properties`

Modifications required: Change the value of `log4j.logger.com.hyperion.hbr` from `WARN` to `DEBUG` to log all messages.

File:

`/<esslib>/Hyperion/deployments/WebSphere6/profile/installedApps/hyslCell/eas.ear/easconsole.war/HBRClient.prop`

Modifications required: Change the value of `log4j.logger.com.hyperion.hbr` from `WARN` to `DEBUG` to log all messages.

Provider Services

File: `/<esslib>/Hyperion/products/Essbase11/aps/bin/essbase.properties`

Modifications required: Change the value of `system.log.level` from `WARN` to `DEBUG` and change the value of `system.log.trace.enable` from `FALSE` to `TRUE` to log all messages.

Analytic Services

File: `/<esslib>/Hyperion/products/Essbase11/EssbaseServer/bin/essbase.cfg`

Modifications required: To get detailed log information, add the following parameters to the file above.

LOGMESSAGELEVEL INFO

CRASHDUMP TRUE
AGENTLOGMESSAGELEVEL INFO
DISPLAYMESSAGELEVEL INFO
AGENTDISPLAYMESSAGELEVEL INFO

Troubleshooting

Overview

This appendix describes different ways of troubleshooting problems that may occur when you are installing and configuring Essbase 11.1.1 for IBM i.

For the latest release notes, see the *Essbase for IBM i ReadMe (essreadme.htm)*, located on the SPSS Technical Support Web site.

Troubleshooting Installation

- ▶ **Problem:** During installation, user received the following error message: Library Name is longer than 10 characters.
Cause: Entered library name is greater than 10 characters.
Solution: Enter a library name that less than or equal to 10 characters. This is a limitation because iSeries only supports library names that are less than or equal to 10 characters.
- ▶ **Problem:** Directories like `/<esslib>/Hyperion/products/Foundation` or `/<esslib>/Hyperion/products/Essbase11` do not get installed even though installation is completed successfully.
Cause: IFS root folder (`/`) has insufficient PUBLIC rights.
Solution: Change PUBLIC rights of root (`/`) from `*NONE` to `*RWX` by using `CHGAUT CL` command and then uninstall previous installation and install it again. For more information about the `CHGAUT CL` command, see <http://publib.boulder.ibm.com/infocenter/iseries/v5r4/index.jsp?topic=/cl/chgaut.htm>.

Troubleshooting Configuration

- ▶ **Problem:** During configuration, user received the following error message: hyperion. <HOSTNAME> does not exist or is not readable (where <HOSTNAME> is the hostname of the iSeries machine).
Cause: The user profile name used to perform installation is not same as used for configuration.
Solution: User should use the same user profile name to perform the installation and configuration.
- ▶ **Problem:** During configuration, user received the following error message: Unable to check Shared Services database existence.
Cause: Schema name entered by user during Shared Services database configuration does not exist.

Solution: Schema existence is a prerequisite for configuration. Refer to “Creating a Database Schema” section of Chapter 4 in the *Essbase 11.1.1 for IBM i Installation Guide*.

- ▶ **Problem:** During configuration, user received the following error message: Authorization failure on distributed database connection attempt.

Cause: The user profile name and/or password entered during database configuration does not match the one(s) used while creating schema.

Solution: Schema creation is a prerequisite for database configuration. The same user profile name and password should be used for configuring database and creating schema.

- ▶ **Problem:** During configuration, user received the following error message: The port number is already used by another application.

Cause: The port number specified during configuration is already used by another process/application.

Solution: In case of a single configuration, check the port numbers used by other applications with the `NETSTAT *CNN` command or `WRKSRVTBLE` command. Enter a different port number that is not being used by any other process. In case of a multiple configuration, before starting configuration, start all servers of the previously installed Essbase configuration. To check the port numbers used by other applications, use the `NETSTAT *CNN` command or `WRKSRVTBLE` command.

- ▶ **Problem:** Registration of Essbase Administration Services/Analytic Provider Services/Essbase Services fails with Shared Services.

Cause: Shared Services server is not started or Shared Services server did not start correctly.

Solution: Check if the Shared Services link is accessible. For more information about verifying Shared Services server status, refer to “Verifying Server Status” in Chapter 2 of the *Essbase 11.1.1 for IBM i Administrator’s Guide*. If the server is not started, then start Shared Services server and reconfigure Essbase Administration Services/Analytic Provider Services/Essbase Services again. For more information about starting servers, see Chapter 2 in the *Essbase 11.1.1 for IBM i Administrator’s Guide*.

- ▶ **Problem:** Configurator exits abnormally after taking deployment information from user.

Cause: IFS root (/) folder has insufficient access rights causing HTTPAdmin and WebSphere profiles to not work properly.

Solution: Change PUBLIC rights of root (/) from *NONE to *RWX by using the `CHGAUT CL` command and then uninstall previous installation and install it again. For more information about the `CHGAUT CL` command, see <http://publib.boulder.ibm.com/infocenter/iserics/v5r4/index.jsp?topic=/cl/chgaut.htm>.

Troubleshooting Starting and Stopping Servers

- ▶ **Problem:** *Internal Server Error* is displayed on browser when accessing Shared Services.

Cause: OpenLDAP and/or directory server is not started.

Solution: In order to verify whether the directory server is started, use the command `WRKACTJOB` and check if eight jobs having a user value of `QDIRSRV` are present. If not, then start the directory server using the following CL command: `STRTCPSVR SERVER (*DIRSRV)`

To start OpenLDAP server, follow the steps given below:

1. Open a new iSeries session.
2. Type `STRQSH` at the main screen of iSeries emulator and press Enter.
3. Change current directory to `/<esslib>/Hyperion/products/Foundation/openLDAP`.
4. Type `./startOpenLDAP.sh` and press Enter.

Note: The Shared Services server needs to be restarted if any of the above mentioned steps are performed.

- ▶ **Problem:** Shared Services server fails to start even though deployment is successful.

Solution 1: Check

`/<esslib>/Hyperion/deployments/websphere6/profile/logs/<sharedServicesServerName>/SystemOut.log` file. If the file contains the following exception:

```
CES_SYSTEM in <DatabaseName> type *FILE not found. Cannot initialize Hyperion DSF. Error:
CES_SYSTEM in <DatabaseName> type *FILE not found.
```

then follow the steps below:

1. Undeploy Shared Services. For more information, see the topic “Undeploying Server Components (Shared Services, APS, or EAS)” on p. 107.
2. Delete database schema.
3. Perform database configuration, custom settings, and deployment of Shared Services again.

Solution 2: Check

`/<esslib>/Hyperion/deployments/websphere6/profile/logs/<sharedServicesServerName>/SystemOut.log` file. If the file contains the following exception:

```
com.ibm.ws.exception.RuntimeError: com.ibm.ws.exception.RuntimeError: Unable to initialize the
Name Service.
```

then the ports assigned to the Shared Services server are being used by any other server or process. Undeploy Shared Services and perform its deployment again with valid port numbers. For more information, see the topic “Undeploying Server Components (Shared Services, APS, or EAS)” on p. 107.

- ▶ **Problem:** Essbase Administration Services server and/or Analytic Provider Services server fails to start.

Solution 1: Essbase Administration Services server and Analytic Provider Services server requires Shared Services server to be running. If Shared Services is not started, then start Shared Services server first, then proceed with starting Essbase Administration Services server and Analytic Provider Services server. For more information about starting the servers, refer to Chapter 2 of the *Essbase 11.1.1 for IBM i Administrator's Guide*.

Solution 2: Check

`/<esslib>/Hyperion/deployments/websphere6/profile/logs/<sharedServicesServerName>/SystemOut.log` file. If the file contains the following exception:

```
com.ibm.ws.exception.RuntimeError: com.ibm.ws.exception.RuntimeError: Unable to initialize the
Name Service.
```

then the ports assigned to Essbase Administration Services server and/or Analytic Provider Services server are being used by any other server or process. Undeploy Essbase Administration Services and/or Analytic Provider Services and perform the deployment(s) again with valid port numbers. For more information, see the topic “Undeploying Server Components (Shared Services, APS, or EAS)” on p. 107.

- ▶ **Problem:** While starting Essbase Integration Server, Essbase Integration Server does not start and exits without displaying any message.

Cause: The port number used by Essbase Integration Server is already used by another process or application.

Solution: By default, Essbase Integration Server runs on port number 3388. If this port number is already used by any other process or application, use a different port number for Essbase Integration Server. To specify a different port number for Essbase Integration Server, add the following line in `ais.cfg` from the `/<esslib>/Hyperion/products/Essbase11/eis/server/bin` folder.

```
[P]=<port-number>
```

- ▶ **Problem:** While starting Essbase Analytic server, the message Fatal Error: Essbase is already loaded appears.

Cause: Essbase server is already up and running on the same port.

Solution: This message is shown when you try to start Essbase server by executing the `./startEssbase.sh` command from the PASE shell (QP2TERM). This indicates that the Essbase server is already up and running on the port specified in the `Essbase.cfg` file.

To start Essbase Analytic Server, stop the previously running server and restart it. To stop the Essbase Analytic Server, you can execute the following steps:

1. Type `CALL QP2TERM` at the menu screen and press Enter.
2. Change your current directory to `/<esslib>/Hyperion/products/Essbase11/EssbaseServer/bin`.
3. Type `./startEsscmd.sh` and press Enter.
4. Use the `LOGIN` command to login to the Essbase server that you want to shut down. For example:

```
LOGIN servername username password
```

5. Use the `SHUTDOWNSERVER` command to shut down the Essbase server. For example:

```
SHUTDOWNSERVER servername username password
```

For more information, see Chapter 2 in the *Essbase 11.1.1 for IBM i Administrator's Guide*.

- ▶ **Problem:** *Internal Server Error* is displayed on browser when accessing Shared Services.

Cause: OpenLDAP and/or directory server is not started.

Solution: In order to verify whether the directory server is started, use the command `WRKACTJOB` and check if eight jobs having a user value of `QDIRSRV` are present. If not, then start the directory server using following CL command: `STRTCPSVR SERVER(*DIRSRV)`

Troubleshooting Connection Failures

- ▶ **Problem:** Cannot connect to Administration Services Console.

Solution 1: Use the `WRKACTJOB` command to verify the Administration Server is running.

Solution 2: Do not login using an Analytic Server profile.

- ▶ **Problem:** Cannot start the server from the Administration Services Console.

Solution: Starting an Analytic Server from within the Administration Console Console requires a remote server to be running on the host where you want to start Essbase server. To start the remote server:

1. Using `CALL QP2TERM (PASE Shell)`, change your current directory to `/<esslib>/Hyperion/Products/Essbase11/EssbaseServer/bin`.
2. Type `./remotesvr` and press Enter
3. Remote server will now start.

For more information on remote server, refer to http://download.oracle.com/docs/cd/E12825_01/epm.111/esb_dbag/frameset.htm?dagent.htm .

- ▶ **Problem:** In the Application Manager's Essbase System Login dialog box, no servers display in the Server drop-down list.

Solution: Initially, the server name (and optional port number, separated by a colon) must be manually entered in the Server drop-down list. After a valid connection is established, the server name is stored.

- ▶ **Problem:** The following error message is displayed: Network Error (10060): Unable to Connect to (x.x.x.x). The client timed out waiting to connect to the Essbase Agent using TCP/IP.

Solution: Verify that the server has been started and is running. Verify the TCP/IP address.

- ▶ **Problem:** The following error message is displayed: Error 1042017: The client or server timed out waiting to receive data using TCP/IP.

Solution: Create or edit the `NETDELAY` and `NETRETRYCOUNT` settings in the `essbase.cfg` file to override the default settings. The `essbase.cfg` file resides in the Essbase library on the server or in the Essbase server `\bin` folder on your PC (for example, `C:\Hyperion\products\Essbase11\EssbaseServer\bin`). The file may reside on both the server and your PC.

- `NETDELAY` dictates how long (in milliseconds) Essbase waits before retrying an unsuccessful operation. The default is 200.
- `NETRETRYCOUNT` dictates how many times the network tries to connect to the host. The default is 600.

Increase the values based on the frequency of the error (the more often the error occurs, the larger the value). For example, increase the value of a less frequent error by hundreds; increase the value of a more frequent error by thousands.

In addition, consider how many users experience the problem. If only a few users are affected, change the *essbase.cfg* file; if a significant number of users are affected, change the iSeries *essbase.cfg* file. After editing the file, stop and restart the Essbase Server.

- ▶ **Problem:** While connecting to Essbase Integration Server from Essbase Integration Console, user received following error message: There is currently no connection between the console and Integration Server. Ensure the server is running and try reconnecting.

Cause: The Essbase Integration Server name and or port number on Essbase Integration Console is incorrect or the server is not running.

Solution: Check whether Essbase Integration Server is up and running. If the integration server is not running, then start the server by executing command `./ais_start` from the location `/<esslib>/Hyperion/Essbase11/eis/server`. For more information about starting servers, refer to Chapter 2 in the *Essbase 11.1.1 for IBM i Administrator's Guide*. If the integration server is up and running, then check the server name and port number of the integration server. By default, Essbase Integration Server runs on 3388 port. If you want to run Essbase Integration Server on a port other than 3388, change the *ais.cfg* file from `/<esslib>/Hyperion/Products/Essbase11/eis/server/bin` folder. Enter the correct Essbase Integration Server with correct port number on the Essbase Integration Console.

- ▶ **Problem:** While connecting to the Essbase Integration Server from the Essbase Integration Console, the DSN list is empty.

Cause: The file *ExternalDataSources.cfg* located at `/<esslib>/Hyperion/common/JDBC/DataDirect/3.7` either does not have any DSN entry or it contains duplicate DSN entries.

Solution: Add DSN entries in the *ExternalDataSources.cfg* or remove the duplicate entry of a DSN. Stop Essbase Integration Server and start again. To stop and start Essbase Integration Server, refer to Chapter 2 of the *Essbase 11.1.1 for IBM i Administrator's Guide*.

- ▶ **Problem:** While starting the Essbase Integration Server, the Essbase Integration Server does not start and exits without displaying any message.

Cause: The port number used by the Essbase Integration Server is already used by any other process or application.

Solution: By default, the Essbase Integration Server runs on port number 3388. If this port number is already used by any other process or application, use a different port number for Essbase Integration Server. To specify a different port number for Essbase Integration Server, add the following line in *ais.cfg* from the `/<esslib>/Hyperion/products/Essbase11/eis/server/bin` folder.

[P]=<port-number>

Troubleshooting Integrated Security

If you followed all the previous instructions and integrated security does not seem to be working, check this list for common problems and their fixes. After fixing problems, stop and restart the Essbase Analytic Server to apply your changes.

- ▶ **Problem:** Your log file has any of the following error messages:

```
1180002: OS400USERSGROUP (ESSUSERS) is not an OS/400 Group User Profile, OS400USERSGROUP disabled
1180003: OS400USERSGROUP (ESSUSERS) is not an Essbase group, OS400USERSGROUP disabled
1180004: OS400COMMONGROUP (HR) ignored. It is not an OS/400 Group User Profile.
1180005: OS400COMMONGROUP (HR) ignored. It is not an Essbase group.
```

Solution: Verify you have created the group profile in Warehouse Manager Client, entered the group in the Essbase configuration file, and added the group in the Administration Services Console. Remember that the group name must be the same in all three locations.

- ▶ **Problem:** You have set up your special groups, Sales and HR, but the users are rejected when they try to log on.

Solution: Verify the users are also members of the OS/400 `ESSUSERS` group. If you are enabling a subset of your users to access Essbase, those users must first be members of OS/400 group `ESSUSERS`. You can then add them to any additional OS/400 groups you define (for example, Sales, HR).

- ▶ **Problem:** Your error file includes the following message:

```
1180008: OS400USERSGROUP (ESSUSERS) has been deleted, OS400USERSGroup disabled
```

Solution: Verify the `OS400USERSGROUP` is still defined in Administration Services Console. If the group has been deleted, it must be re-created for integrated security to work properly.

Undeploying Server Components (Shared Services, APS, or EAS)

To undeploy Shared Services, Provider Services, or Administration Services:

1. Enter `STRQSH` on main screen of your emulator.
2. Change your current directory to `/<esslib>/hyperion/deployments/Websphere6/bin`.
3. Enter `undeploy<server_name>` to undeploy a specific server.

For example, if you wish to undeploy Shared Services and your Shared Services server name is `SharedService9`, then you need to enter `undeploySharedServices9`. Similarly, if you wish to undeploy EAS or APS, then you should enter `undeployeas` or `undeployaps` respectively.

- Administration Services
 - client, 67
 - configuration, 15, 93
 - configuration files, 60
 - console, 67
 - installation, 88
 - log files, 88, 93, 95
 - log levels, 98
 - port number, 3, 9, 33
 - server name, 33
 - undeploying, 107
- ais.cfg file, 61
- Analytic Provider Services
 - See* Provider Services, 3, 9
- Analytic Services
 - client, 67
 - configuration, 15, 93
 - configuration files, 60
 - installation, 89
 - log files, 89, 93, 96
 - log levels, 98
 - port number, 3, 9, 36
- APS
 - See* Provider Services, 3, 9
- ARBORPATH, 37

- backing up
 - libraries, 6

- CCSID, 12
- changing the language, 61
- changing the port range, 62
- client components
 - installing, 67
- client installation, 68–69
 - preparing, 68
 - starting, 69
 - uninstalling, 69
- client requirements, 6–7, 67
- commands
 - MIGR11 command, 80
 - RSTANZ command, 80
 - SAVANZ command, 80
- common components
 - installation, 90
 - log files, 90
- configuration
 - Administration Services, 15
 - Analytic Services, 15
 - CCSID, 12
 - database, 12, 20, 28
 - DB2, 12, 20
 - Hyperion Foundation, 15
 - IASP, 24
 - Integration Services, 15
 - log files, 91
 - Provider Services, 15
 - requirements, 10
 - server, 13–15
 - Shared Services, 15
 - SMTP, 25
 - SSL, 25
 - step-by-step, 15
 - troubleshooting, 101
 - WebSphere, 30, 41
- configuration files, 59
 - Administration Services, 60
 - Analytic Services, 60
 - Integration Services, 61
 - Provider Services, 60
 - Shared Services, 61
- configuring
 - server components, 13
 - TCP/IP, 6
- contacting
 - technical support, 1
- copying installation DVDs to the network, 68
- creating a database schema, 11

- database
 - advanced options, 24
 - configuration, 20, 28
- database schema
 - configuration, 21
 - creating, 11
 - deleting, 63
- DB2, 12
 - configuration, 20
- deleting
 - client components, 69
 - database schema, 63
 - IFS root entry and subdirectories, 63
 - ILE library, 63
- documentation, 1
 - online, 4
 - Oracle, 3, 67

- EAS
 - See* Administration Services, 3, 9
- EIS
 - See* Integration Services, 3, 9
- enhancements, 3

- environment requirements, 5
- EPM System Configurator, 13–15
- Essbase Administration Services
 - See Administration Services, 3, 9
- Essbase Analytic Services
 - See Analytic Services, 3, 9
- Essbase Integration Services
 - See Integration Services, 3, 9
- essbase.cfg file, 37, 60, 62
- ESSLANG, 61
- Excel requirements, 7
- ExternalDataSources.cfg file, 106

- hardware requirements
 - client, 7
 - server, 5
- Hyperion Foundation
 - configuration, 15

- IASP
 - configuration, 24
- ILE library
 - deleting, 63
- installation
 - assemblies, 68
 - client, 67–69
 - DVD, 68
 - log files, 10, 87
 - prerequisites, 9
 - requirements, 6
 - server, 3, 9, 12
 - starting, 69
 - troubleshooting, 101
- installation files, 59
- installing
 - client components, 67–68
 - server components, 12
- Integrated Security, 79
 - troubleshooting, 107
- Integration Services
 - client, 67
 - configuration files, 61
 - installation, 88
 - log files, 88, 96
 - port number, 3, 9

- known issues, 101

- language, 38
 - changing, 61
- LDAP
 - port number, 23
- libraries
 - backing up, 6

- locale, 38, 61
- log files
 - Administration Services, 88, 93, 95
 - Analytic Services, 89, 93, 96
 - applications, 95
 - common components, 90
 - configuration, 91
 - installation, 10, 87
 - Integration Services, 88, 96
 - log levels, 96
 - other, 91, 96
 - overview, 87
 - Provider Services, 89, 94, 96
 - Shared Services, 87, 91, 95
 - tools, 91
- log levels
 - Administration Services, 98
 - Analytic Services, 98
 - EPM System Configurator, 97
 - Provider Services, 98
 - setting, 96
 - Shared Services, 97
- LPPs, 5

- MIGR11 command, 80
- migrating, 71, 73–75
 - options, 77
 - overview, 77
 - prerequisites, 77
 - Web Analysis, 79–80, 82
- migrating the Essbase environment only, 77
- Migration Wizard, 74

- network
 - copying installation DVDs to, 68
- new features, 3
 - Web Analysis, 79

- online documentation, 4
- operating system requirements
 - client, 7
 - server, 5
- options
 - migrating, 77
- Oracle documentation, 3–4, 67

- patches, 1, 72
- port number
 - Administration Services, 3, 9, 33
 - Analytic Services, 3, 9, 36
 - Integration Services, 3, 9
 - LDAP, 23
 - Provider Services, 3, 9, 31
 - Shared Services, 3, 9, 34

- WebSphere, 41
- port range
 - Analytic Services, 62
 - changing, 62
- prerequisites
 - client, 7, 67
 - migrating, 77
 - server, 5
- Provider Services
 - configuration, 15, 94
 - configuration files, 60
 - installation, 89
 - log files, 89, 94, 96
 - log levels, 98
 - port number, 3, 9, 31
 - server name, 31
 - undeploying, 107
- ReadMe, 3–4
- release notes, 4
- removing client components, 69
- requirements
 - client, 7, 67
 - configuration, 10
 - disk space, 7
 - environment, 5
 - Excel, 7
 - installation, 6
 - Internet browser, 7
 - Java, 5, 7
 - LPPs, 5
 - operating system, 5
 - processor, 7
 - RAM, 7
 - server, 5
 - software, 7
 - system, 5
 - TCP/IP, 6
 - Windows version, 7
- RSTANZ command, 80
- SAVANZ command, 80
- schema, database
 - configuration, 21
 - creating, 11
 - deleting, 63
- server
 - configuration, 59
 - installation, 3, 9, 59
 - uninstalling, 63
- server connections
 - troubleshooting, 105
- server installation, 12
 - configuring, 13–15
 - prerequisites, 9
- server requirements, 5
- server-client
 - connection compatibility, 72
- servers
 - undeploying, 107
- setting log levels, 96
- Shared Services
 - configuration, 15, 91
 - configuration files, 61
 - installation, 87
 - log files, 87, 91, 95
 - log levels, 97
 - port number, 3, 9, 34
 - undeploying, 107
- ShowCase Analyzer, 80
- ShowCase Data Models, 79
- SMTP
 - configuration, 25
- software requirements
 - client, 7
- SSL
 - configuration, 25
- starting servers
 - troubleshooting, 102
- stopping servers
 - troubleshooting, 102
- support
 - technical, 1
- system requirements, 5
- TCP/IP, 6
- technical support
 - contacting, 1
- tools
 - installation, 91
 - log files, 91
- troubleshooting, 1, 101
 - configuration, 101
 - installation, 101
 - Integrated Security, 107
 - server connections, 105
 - starting servers, 102
 - stopping servers, 102
- undeploying
 - Administration Services, 107
 - Provider Services, 107
 - Shared Services, 107
- undeploying server components, 107
- uninstalling
 - Administration Services, 63
 - Analytic Services, 63
 - client components, 69
 - Integration Services, 63
 - PC software, 69
 - Provider Services, 63
 - Shared Services, 63

uninstalling server components, 63

unsupported features

 Web Analysis, 79

upgrading, 73–75

 common questions, 72

 compatibility, 72

 Essbase, 71

 overview, 71

 prerequisites, 72

 Web Analysis, 79

verifying upgrade, 75

Web Analysis

 migrating, 79–80, 82

 new features, 79

 unsupported features, 79

 upgrading, 79

WebSphere

 configuration, 30, 41

 port number, 41

Windows requirements, 6