



# > ShowCase<sup>®</sup> Analyzer<sup>™</sup> 7.01 Lists



For more information about SPSS® software products, please visit our Web site at <http://www.spss.com> or contact

SPSS Inc.  
233 South Wacker Drive, 11th Floor  
Chicago, IL 60606-6412  
Tel: (312) 651-3000  
Fax: (312) 651-3668

SPSS is a registered trademark and the other product names are the trademarks of SPSS Inc. for its proprietary computer software. No material describing such software may be produced or distributed without the written permission of the owners of the trademark and license rights in the software and the copyrights in the published materials.

The SOFTWARE and documentation are provided with RESTRICTED RIGHTS. Use, duplication, or disclosure by the Government is subject to restrictions as set forth in subdivision (c) (1) (ii) of The Rights in Technical Data and Computer Software clause at 52.227-7013. Contractor/manufacturer is SPSS Inc., 233 South Wacker Drive, 11th Floor, Chicago, IL 60606-6412.

General notice: Other product names mentioned herein are used for identification purposes only and may be trademarks of their respective companies.

iSeries is a registered trademark of IBM Corporation.  
Java is a trademark of Sun Microsystems.

ShowCase® Analyzer™ 7.01 Lists  
Copyright © 2005 by SPSS Inc.  
All rights reserved.

No part of this publication may be reproduced, stored in a retrieval system, or transmitted, in any form or by any means, electronic, mechanical, photocopying, recording, or otherwise, without the prior written permission of the publisher.

1 2 3 4 5 6 7 8 9 0 08 07 06 05  
ISBN 1-56827-349-5

---

# Contents

<b>1</b>	<b>ShowCase Analyzer 7.01 Lists</b>	<b>1</b>
	Enabling Lists . . . . .	1
	Creating a New Range List . . . . .	2
	Creating a New Selection List . . . . .	4
	Using a List in a Report . . . . .	5
	Editing an Existing List . . . . .	5
	Disabling Lists . . . . .	6



# **ShowCase Analyzer 7.01 Lists**

This document describes how to use the list feature in ShowCase Analyzer 7.01, which provides access to the date-range and roll-up features available in previous releases. Analyzer 7.01 lists are ad hoc member groups associated with a Showcase data model (SDM) connection. For information on data models, see the *ShowCase Analyzer 7.01 Guide*.

This document includes the following topics:

- “Enabling Lists”
- “Creating a New Range List”
- “Creating a New Selection List”
- “Using a List in a Report”
- “Editing an Existing List”
- “Disabling Lists”

This document assumes you have created SDM connections in ShowCase Analyzer 7.01. For information on adding an SDM connection, see the *ShowCase Analyzer 7.01 Guide*.

## **Enabling Lists**

If you have not already done so, apply the latest ShowCase Analyzer patch. You can download patches for all supported products from the SPSS Technical Support Web site at <http://support.spss.com>.

To enable lists, you must modify the *Analyzer.properties* file.

### **To Modify the Analyzer.properties File**

1. Stop the Analyzer Server.
2. Open the *Analyzer.properties* file for editing. The file is in the IFS directory location */ANZSERVER/proddata/config/* (where *ANZSERVER* is the Analyzer installation library).
3. Add the following line to the file:  
`scolap.use_SDM_lists=true`

*Note:* A line containing the phrase `scolap.use_SDM_lists` may already exist in the *Analyzer.properties* file. If so, edit it to match the line above.

4. Save the file, and restart the Analyzer Server.

## ***Creating a New Range List***

A range list allows you to build a list by specifying members in a given range. When a query is run, all members in that range are included in the list.

1. To create a range list with a personal database connection, log on to the Analyzer Java Web Client:
  - From the Tools menu, choose User Preferences.
  - In the User Preferences dialog box, click Connections.
  - In the Connections control box, select the SDM for which lists will be created and right-click to display the drop-down menu.
  - From the drop-down menu, select Properties.
  - In the ShowCase Data Model Database Connection Properties dialog box, click the Lists tab. A list of existing dimensions displays.

OR

To create a range list with a global database connection, log on to the Analyzer Administration Tools Client:

- From the list of databases on the left side of the Administration Tools Client dialog box, select the SDM for which lists will be created.
  - Click the General tab.
  - Under Lists, click the Edit button to display the Lists dialog box.
2. Double-click a dimension to display the SDM List Properties dialog box.
  3. If it is not already selected, select Range from the List Type selection buttons on the right side of the SDM List Properties dialog box.
  4. In the SDM List Properties dialog box, enter the information as shown in the following figure.

Figure 1-1  
SDM List Properties dialog box

The screenshot shows a dialog box titled "SDM List Properties". It has a standard Windows-style title bar with a close button. The dialog contains three text input fields: "Name:" with the value "February", "First Member:" with the value "2005-02-01", and "Last Member:" with the value "2005-02-28". To the right of these fields is a "List Type" section with two radio buttons: "Selection" (unselected) and "Range" (selected). At the bottom of the dialog are three buttons: "HELP", "OK", and "CANCEL".

- **Name.** Name of the list you are creating.
- **First Member.** The first member of the range.
- **Last Member.** The last member of the range.

The following statements are true of range-list members:

- Members in a range-list dimension without lookups are ordered based on the column in the SDM query that correlates to that dimension. This ordering determines which dimension members are included in a range list. First and last member values must match one of three SDM query column types: date, numeric, or string. Date columns are ordered chronologically and must be in ISO format: 2005-09-27 (year, month, date). Numeric columns are ordered numerically and must be numbers. String columns are ordered alphabetically regardless of case or locale.
- Members in a range-list dimension with lookups are ordered alphabetically based on the mapped member name regardless of case or locale.
- You can create an open-ended range list by leaving either the first or last member field blank. For example, if you specify “M” as the first member for a dimension containing state names and leave the last member field blank, the resulting list will include the states Maine through Wyoming.
- Members need not exist in the dimension. However, if both members exist in the dimension, the first member must precede the last member. For example, if the dimension contains states, entering “M” as a first member and “A” as a last member is invalid.
- Members must be 30 characters or less.

5. Click OK to add the list.

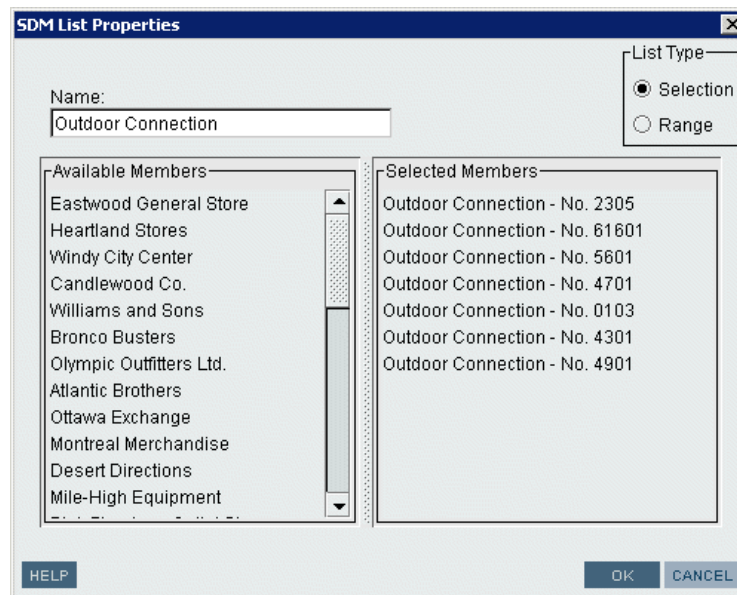
Continue to add new lists as needed by repeating steps 2 through 5.

## Creating a New Selection List

A selection list allows you to build a list from existing members. If members are added or removed from the database, the selection list does not change.

1. To create a selection list, start by following the instructions in step 1 of “Creating a New Range List” on p. 2 .
2. Double-click a dimension to display the SDM List Properties dialog box.
3. If it is not already selected, select Selection from the List Type selection buttons on the right side of the SDM List Properties dialog box.
4. Enter the information as shown in the following figure.

Figure 1-2  
SDM List Properties dialog box



- **Name.** Name of the list you are creating.
- **Available Members.** Database members available for inclusion in the list.
- **Selected Members.** Click an available member and drag it to the Selected Members control box to add it to the list. You cannot drag and drop multiple members.

*Note:* To remove a member from the list of Selected Members, click the member and drag it back to the Available Members control box.

5. Click OK to add the list.

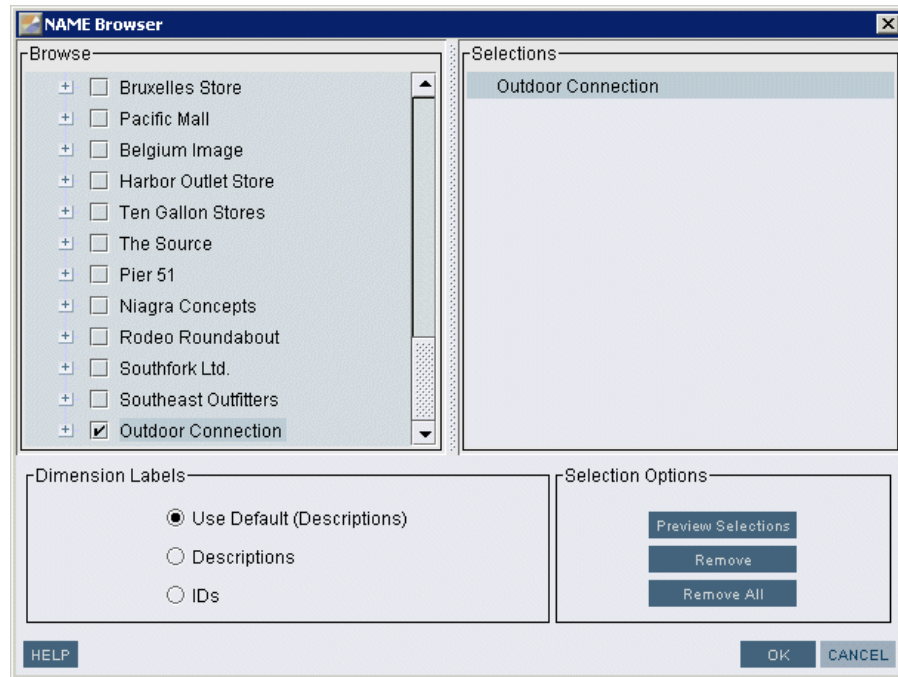
Continue to add new lists by repeating steps 2 through 5.



## Using a List in a Report

When you create a report in ShowCase Analyzer 7.01, all lists associated with an SDM appear at the end of the list of dimension children in the dimension browser dialog box, as shown in the following figure. Lists behave like any other member selected in a report.

Figure 1-3  
Dimension browser dialog box



## Editing an Existing List

1. To edit a list with a personal database connection, log on to the Analyzer Java Web Client:
  - From the Tools menu, choose User Preferences.
  - In the User Preferences dialog box, click Connections.
  - In the Connections control box, select the SDM that contains the list you wish to edit, and right-click to display the drop-down menu.
  - From the drop-down menu, select Properties.
  - In the ShowCase Data Model Database Connection Properties dialog box, click the Lists tab. A list of existing dimensions displays.

OR

To edit a list with a global database connection, log on to the Analyzer Administration Tools Client:

- From the list of databases on the left side of the Administration Tools Client dialog box, select the SDM that contains the list you wish to edit.

- Click the General tab.
  - Under Lists, click the Edit button to display the Lists dialog box.
2. Right-click an existing list to display the drop-down menu, and select Delete or Edit.

*Note:* You can also edit a list through a report, using the following instructions:

1. Open a report that contains the list you wish to edit.
2. To display the information panel, click the Information icon located in the upper left corner of the tool bar.
3. Scroll down the information panel to locate the database name.
4. Right-click the database name to display the context menu.
5. From the context menu, select Data Connection Properties. The ShowCase Data Model Database Connection Properties dialog box displays.
6. In the ShowCase Data Model Database Connection Properties dialog box, click the Lists tab. A list of existing dimensions displays.
7. Right-click an existing list to display the drop-down menu, and select Delete or Edit.

## ***Disabling Lists***

To disable lists, you must modify the *Analyzer.properties* file.

### ***To Modify the Analyzer.properties File***

1. Stop the Analyzer Server.
2. Open the *Analyzer.properties* file for editing. The file is in the iSeries IFS location */ANZSERVER/proddata/config/* (where *ANZSERVER* is the Analyzer installation library).
3. Locate the following line in the file:  
`scolap.use_SDM_lists=true`
4. Edit the line to read:  
`scolap.use_SDM_lists=false`
5. Save the file, and restart the Analyzer Server.