



IBM SOA

# The SOA Agenda

## *Building on SOA*

## *Entry Point Successes*

**Sandy Carter**  
VP, SOA Strategy,  
Channels and Marketing



# The Basics: What is SOA?

## ... a service?

A **repeatable business task** – e.g.,  
check customer credit;  
open new account



## ... service oriented architecture (SOA)?

An IT **architectural style** that supports  
integrating your  
business as linked  
services

“Anything that changes can do that much better if the system is architected in SOA.”

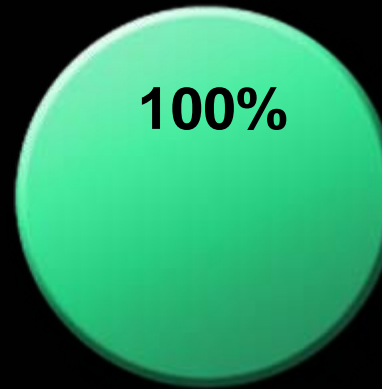
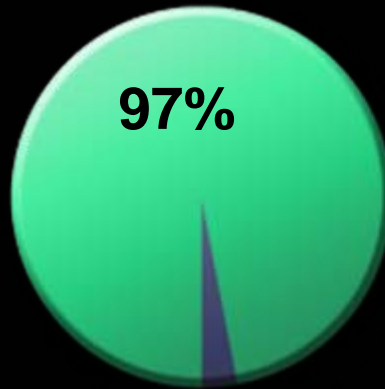
**Gartner**

# SOA Delivers Business Value ... Today

## *A Recent Study from IBM SOA Engagements*

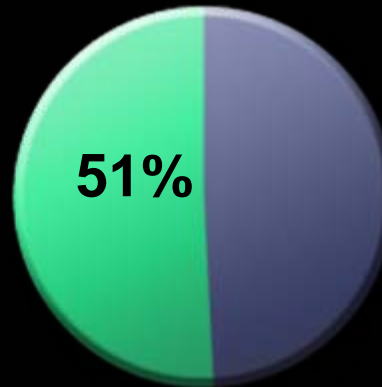
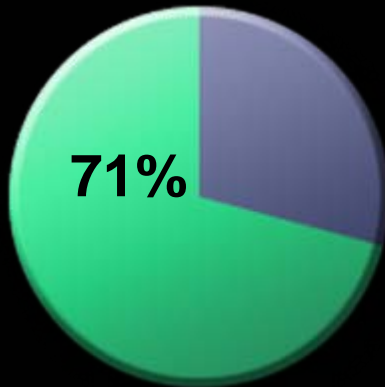
The IBV studied a subset of engagements and found:

97% justified SOA projects based on cost savings & impact to profitability



100% realized improved flexibility

71% reduced risk



51% experienced increased revenue

# Customers Realize IBM SOA Value *Across Large Enterprises & SMB*

Half of the world's 30  
biggest electronics  
companies

10 of the world's 10  
biggest auto  
manufacturers

52% of all federal  
Governments

10 of the world's 10  
biggest banks

4 of the world's 10  
biggest retailers

9 of the world's 10  
biggest telcos

80% of the biggest  
US health plans



90 SMB references

8 of the world's 10  
biggest insurers

# How Do They Get Started? SOA Entry Points

*Both IT Focused and Business Centric*



“ IBM has a strong vision for SOA, with a broad set of enabling technologies and solution entry points. IBM has the most-comprehensive sets of SOA capabilities on the market. Its internal SOA center of excellence is anchored in BCS but stretches to encompass software and services.” *Gartner Evaluates IBM, David Cearley October 10,2006*

**Gartner**

# SOA People:

*Stays on top of global logistics market with IBM SOA solution*



WORLDWIDE NETWORK FOR YOUR NON-FERROUS METAL BUSINESS

## PACORINIGROUP

### Business Challenge:

- ✓ Provide user-friendly tools for employees and better solutions for customers and partners
- ✓ Position company for future growth

### Actions:

- ✓ Enhanced user interactions with portal providing simplified, SOA-enabled access to order and warehouse applications

### Business Value:

- ✓ More consistent customer services
- ✓ More efficient order management
- ✓ Faster response to customer and employee needs

## Value of People

- Improve people productivity & collaboration

## Why SOA?

Composite applications created, deployed, and updated faster with SOA portlets

# IBM WebSphere Portal Version 6.0

*Meeting the New Requirements for the Front-End of SOA*

- Rapidly Respond to Change
- Easy-To-Use Composite Application Templates
  - Samples
  - Flexibility to easily customize interfaces
  - Leverage new workflow builder
  - Portlet Palette & Enhanced Portlets
- Increase Productivity and Operational Efficiency
  - Enhanced IBM Workplace Web Content Management



*“Through 2007, an enterprise portal will be the first major application of SOA concepts for more than 50 percent of enterprises (0.6 probability).”  
Gene Phifer, Gartner*

# SOA Information: Improves agility *with IBM SOA*



*Chao Yang District*



## **Business Challenge:**

- ✓ Lack of trusted information
- ✓ Technology could not meet business needs

## **Actions:**

- ✓ Deployed a Grid City Management Solution based on service orientation approach

## **Business Value:**

- ✓ Solve information silo
- ✓ Flexible & scalable framework
- ✓ Improve efficiency

## Value of Information

- Improve operations with trusted information services delivered in-line and in-context

## Why SOA?

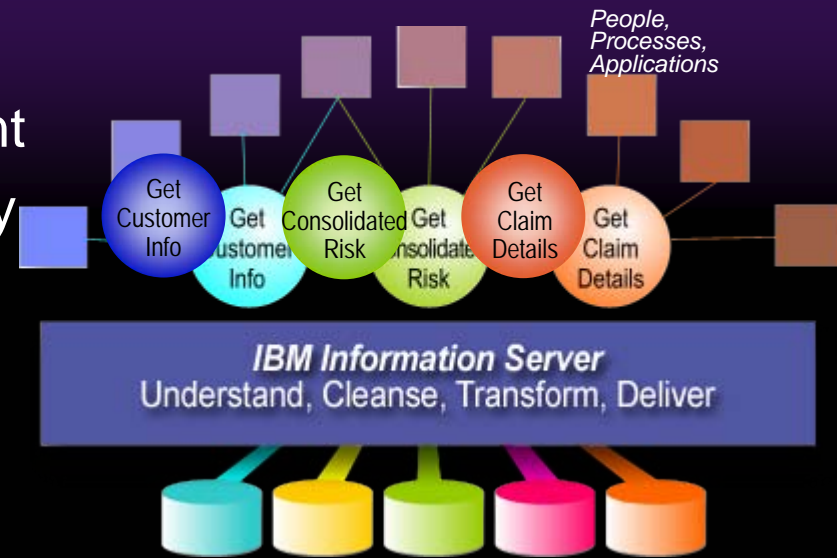
Trusted information packaged as services are embedded inline within processes or delivered to people



# IBM Information Server

## *A Complete Information Infrastructure*

- Rapid information service deployment
- Auditable data quality and traceability
  - Foundation for trusted information
- Metadata-driven integration
  - Breakthrough productivity and flexibility
- Consistent, reusable information services
- Accelerated time to value
  - Proven, industry-aligned solutions and expertise



*“Effective SOAs include robust data services within an enterprise information management enabling infrastructure.” Gartner Inc, 2006*

# SOA Process:

## *Creating Financial Programs with IBM SOA*



### Value of Process

- Optimize business process quickly with flexibility
- Create, reuse, assemble and orchestrate services, connected and re-deployed more flexibly and quickly

### *Harley Davidson Financial Services*

#### **Business Challenge:**

- ✓ Improve loan processing
- ✓ Support frequent changes in financing promotions

#### **Actions:**

- ✓ Service-enabled existing systems allowing for rapid re-assembly
- ✓ Created loosely-coupled process as services for flexibility

#### **Business Value:**

- ✓ Alignment of IT systems with business initiatives
- ✓ Faster and cheaper process changes

# WebSphere Process Server

## *The Engine Room of Business Process Management*

**Enhanced!**

- Robust execution of business processes
- Supports all aspects of process integration
- Rapid process change ensuring business agility
  - Reuse existing services
  - Business rules can change dynamically
- What's New
  - Enhanced human-centric BPM capabilities
  - New dynamicity features
  - Cross-product integration
  - Enhancements to relationships, state machines, business rules and mappings



# SOA Reuse:

*Delivering a faster, flexible and easier to use solution*



## Business Challenge:

- ✓ Integrate heterogeneous systems from mergers to enhance productivity

## Actions:

- ✓ Service oriented middleware layer to exchange data with existing legacy systems including mySAP

## Business Value:

- ✓ Improved to 100% consistency of order data across applications
- ✓ Improved month-end closing times from 13 days to 2
- ✓ Shortened shipping time: from 7 weeks to 4
- ✓ Reduced component development time from 26 to 17 days

## Value of Reuse

- Protect existing business logic
- 5X less expensive than to write new
- Significantly lower risks and faster time to market

# SOA Connectivity: *Improve Customer Service with IBM SOA*



## Value of Connectivity

- Deliver services through new business channels
- Flexible connections with trading partners
- Minimize complexity

## Business Challenge:

- ✓ Custom coding for integrating new and existing applications reducing productivity and increasing costs

## Actions:

- ✓ Standardized application integration using Web services and ESB

## Business Value:

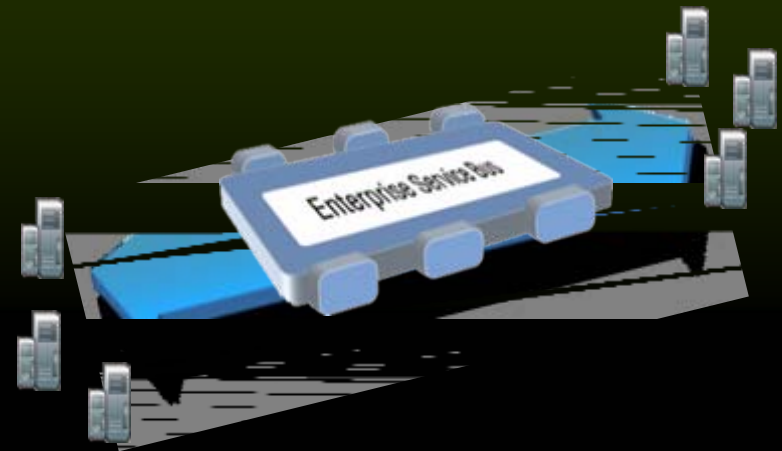
- ✓ 100% payback of investment in 24 months
- ✓ Savings of \$720,000 annually in deployment costs
- ✓ 25% less development time

# WebSphere ESB & WebSphere Message Broker

*Enable Every Kind of Application and Data to Participate in SOA*



- Routing messages between services
- Converting transport protocols
- Transforming message formats
- Handling business events from disparate sources

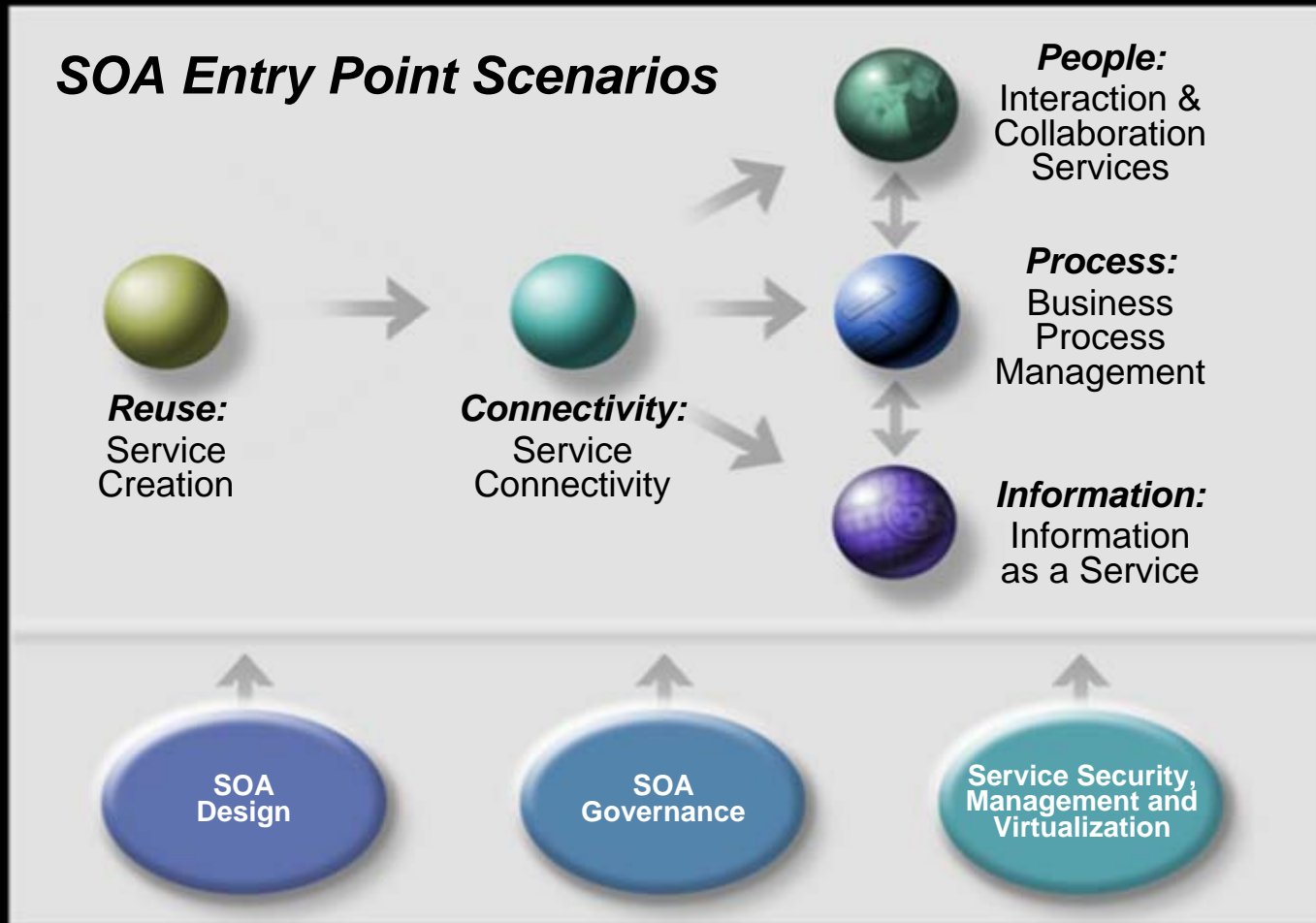


**WebSphere ESB:** The ESB for standards and web services integration

**WebSphere Message Broker:** The advanced ESB for web services and non web services assets

# SOA Entry Point Scenarios Help You Get Started

*Based on over 3000 SOA engagements*



# Factory in a Box: Innovation enabled by SOA

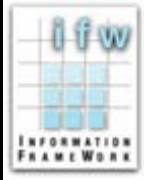


Factory in a Box Video



# IBM SOA Business Catalog

*The place to find your SOA assets*



## Banking & Financial Markets

- 500+ Reusable Assets



## Insurance

- 400+ Reusable Assets



## Government

- 200+ Reusable Assets

## Cross Industry

- 200+ Adapters
- 250+ Portlets
- Rational Patterns and Plug-ins
- SWG, GTS and GBS SOA Services

**3665+ IBM & Partner Assets**  
(Over 67% Partner Assets)

Services & solutions | Support & downloads | My account

### IBM SOA Business Catalog

Recipe for reuse

**Unlocking the power of SOA**

The IBM SOA Business Catalog is a single, comprehensive online directory of hundreds of reusable SOA assets from IBM and select business partners. Speed time to value by reusing existing services, tools, components, and best practices for building your SOA environment. Learn more about how [IBM's SOA Products and Services](#) can help you build for innovation, flexibility, and growth.

**Search** [input field] [button]

**Industries** | SOA Lifecycle | SOA Foundation | All categories

- Aerospace & Defense
- Automotive
- Chemicals & Petroleum
- Consumer Services
- Consumer Packaged Goods
- Education
- Electronics
- Energy & Utilities
- Financial Markets
- Government
- Healthcare
- Insurance
- Life Sciences
- Media & Entertainment
- Other Industrial Industries
- Professional Services
- Retail
- Retail Bankings
- Telecommunications
- Travel & Transportation
- Wholesale Distribution & Services

**New**

- IBM Workplace Dashboard for Executives
- IBM Workplace™ Dashboard for Sales
- IBM QuickStart for WebSphere Enterprise Service Bus
- IBM QuickStart for WebSphere Process Server
- IBM QuickStart for WebSphere Business Monitor

**Popular**

- IBM GetStarted with Service Oriented Architecture
- Enterprise Patterns Asset
- Contains all classifications
- WebSphere Adapter Toolkit
- SUP Plug-In for SOA v1.0

Notice - For non-IBM offerings in this Catalog, you may be directed to a third party website. In such cases, the third parties are responsible for any warranties, support, and licensing terms related to the offering. View the complete [disclaimer](#) and [privacy](#).

The Category membership of each offering listed in this Catalog specifies the applicable IBM product(x) for which the offering was developed. The Category membership is specified in the initial page of the Catalog of each offering. You must have a license for that applicable IBM product in order to download and access the offering under the control of that IBM product.

This Web site does not collect personal information. Please refer to the IBM privacy policy for additional information.

[ibm.com/soa/soabusinesscatalog](http://ibm.com/soa/soabusinesscatalog)

## What is IT governance?

Establishing decision making rights associated with IT

Establishing mechanisms and policies used to measure and control the way IT decisions are made and carried out



## What is SOA governance?

Extension of IT governance focused on the **lifecycle of services** to ensure the business value of SOA

**SOA  
Governance is  
a catalyst  
for improving  
overall IT  
governance**

# WebSphere Service Registry and Repository

## Enabled SOA Governance



### WebSphere Service Registry and Repository



**Service Development and Delivery Management**

*Enforce Process and Policies*

- Discover services and metadata from other registries
- Publish newly developed services and artifacts

- Notify clients of changes
- Organize service metadata with classification and lifecycle support

**Infrastructure and Management In Support of SOA**

*Monitor Operational Policies*

“We are witnessing the ‘industrialization of software’ with the introduction of products, new as well as enhanced versions, and new services under IBM’s new Service Oriented Architecture package...This is very much a best practices-driven approach to technology ... The fact they are bringing the registry and repository together is a good move, is a good approach. That is new.”

Judith Hurwitz, for eChannelLine, October 3, 2006

# SOA Skills Available

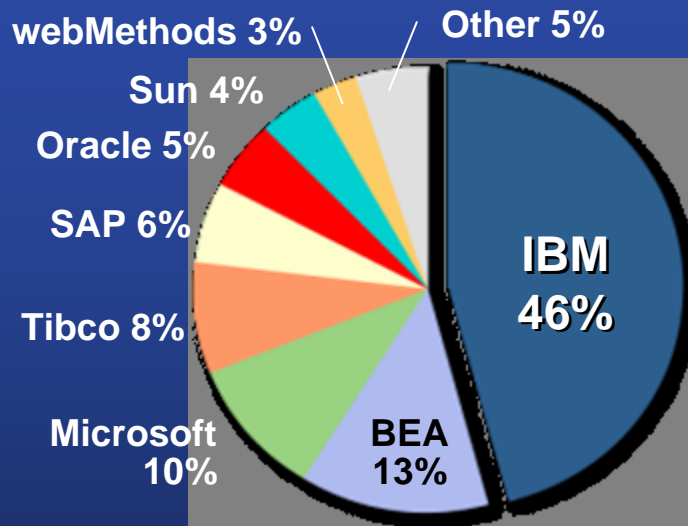
*Leverage your existing assets to maximize value*

	Governance			
	Strategy	Design	Implementation	Management
<b>Business Services</b>	<ul style="list-style-type: none"> <li>Component Business Modeling™ (CBM)</li> <li>Assessment &amp; Planning for SOA</li> </ul>	<ul style="list-style-type: none"> <li>Composite Business Services Design</li> <li>SOA-enabled Design</li> </ul>	<ul style="list-style-type: none"> <li>Composite Business Services Assembly</li> <li>Services Implementation</li> <li>Legacy Transformation</li> <li>Performance &amp; Testing COE for SOA</li> </ul>	<ul style="list-style-type: none"> <li>Business Performance Management</li> <li>Management of Services</li> <li>Services Outsourcing</li> </ul>
<b>Application Services</b>	<ul style="list-style-type: none"> <li>Application &amp; IT Portfolio Assessment</li> </ul>	<ul style="list-style-type: none"> <li>Performance Design for SOA</li> </ul>	<ul style="list-style-type: none"> <li>Infrastructure Implementation for SOA</li> </ul>	<ul style="list-style-type: none"> <li>Quality of Service - Security</li> </ul>
<b>Middleware Services</b>	<ul style="list-style-type: none"> <li>Component Business Modeling™ (CBM) for the Business of IT</li> </ul>	<ul style="list-style-type: none"> <li>Infrastructure Architecture &amp; Design for SOA</li> </ul>	<ul style="list-style-type: none"> <li>Service Management Implementation</li> </ul>	<ul style="list-style-type: none"> <li>Managed Infrastructure</li> </ul>
<b>Infrastructure Services</b>	<ul style="list-style-type: none"> <li>IT and Middleware Readiness for SOA</li> </ul>	<ul style="list-style-type: none"> <li>Service Management Design for SOA</li> </ul>		<ul style="list-style-type: none"> <li>Product Maintenance &amp; Support</li> </ul>



# WinterGreen Shows IBM is the Market Leader *Up 12% in Market Share Over 18 Months!*

## 2005 SOA Market Share



Source: WinterGreen Research, 2006



**IBM Placed in the  
Leaders Quadrant**



**# 1 in SOA**



**Lead in Wave**



**# 1 in  
Capabilities**

# IBM Has the Intellectual Capital, Tools, Products & Expertise *To Guide Clients in the Definition of Business Value*

**Early adopters demonstrate some ideal guiding principles for other clients to follow in their first implementations**

- Focus on a real business problem, not SOA
- If possible, start with revenue-generating applications
- Start small
- Start building capabilities
- Think long term

Source: IBM Institute for Business Value "The Business Value of Service-Oriented Architecture" 2006

# Thank You

# Business-led approach to SOA

*Focus on enterprise-wide transformation through SOA*

- Driving force behind SOA Adoption
  - Survival – Company needed drastic cost reduction to stay in business
  - Heavy redundancy within 500 applications (i.e. 13 policy admin systems, 9 billing systems, 1000's of undocumented databases)
- Approach taken by IBM
  - Top-down, enterprise-wide SOA with rigorous SOA Governance
  - Component Business Modeling (CBM) and Service Oriented Modeling and Architecture (SOMA) to establish "game plan"
  - Implementation of service model including extensive application outsourcing, training, and change management
- Why an SOA approach made sense vs. traditional approach
  - Crucial offshoring strategy for non-core functions was needed; SOA seen as best approach to abstract business function from underlying technology
  - Non-cyclical growth opportunities require flexible business model based on extensive componentization and service orientated business processes
- Value achieved through project
  - 10% to 40% cost savings; 25% to 50% time savings
  - Made fixed costs more variable
  - IT skills aligned with business's core rather than non-core functions



**Large U.S.  
Insurance  
Company**

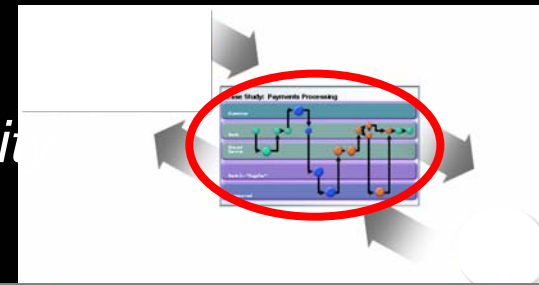




# Process-led approach to SOA

## *Focused improvement in business process flexibility*

- Driving force behind SOA Adoption
  - Business hampered by monolithic application solutions and the ability to provide creative business solutions
  - Overhaul loan processing to keep pace with frequent changes in financing promotions
- Approach taken by IBM
  - Focus on business processes through sequence of Process, Information, and People Entry Points
  - Service-enabled existing systems allowing for rapid re-assembly through loose-coupling among services
- Why an SOA approach made sense vs. traditional approach
  - Through past experience, SOA was the only way IT systems could be re-configured quickly enough to keep pace with process changes
- Value achieved through project
  - Revenue growth through faster response to production and market conditions
  - Lower Cost of Operations, Development, and Deployment



# Technology-led approach to SOA

## *Bottoms-up IT optimization*

- Driving force behind SOA Adoption
  - Timely compliance with changing port customs mandates
  - Inflexibility and maintenance costs of redundant, aging, disparate infrastructure
- Approach taken by IBM
  - Consolidate infrastructure, reduce complexity
  - Phased service enablement of existing systems and logic
- Why an SOA approach made sense vs. traditional approach
  - SOA was the only way to effectively reuse existing assets to provide necessary IT flexibility
- Value achieved through project
  - Improved system rollout of new port from 3 months to 3 weeks
  - Reduced change requests from 3 weeks to 3 days
  - COSCON IT became industry consultant and IBM reseller

