



# IBM BusinessConnect 2014

## A New Era of Smart

5th May 2014 | Armani Hotel Dubai



# IBM BusinessConnect 2014

A New Era of Smart



## Manage B2B IT Complexity without draining your IT resources

Bart Debecker  
Sales Leader B2B – Middle East



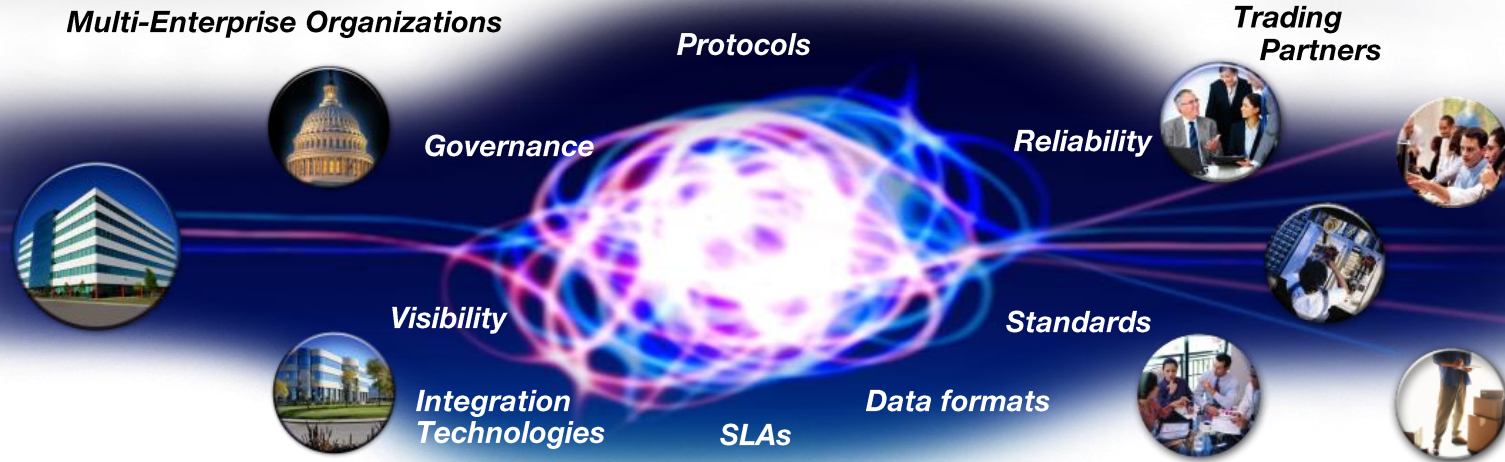


# Every interaction is important





# Companies across all industries are facing an increasingly complex B2B integration problem



The need to be globally integrated is driving an expansion of ecosystems and the number of partners organizations to transact with



## B2B in companies is typically fragmented and inconsistent

- No strategy behind file transfer
  - Different ways of transferring files (sFTP, FTP, AS2, HTTPS, e-mails, fax, print, etc)
  - Silo approach
- FTP is widely used and comes with heavy limitations
  - Not secure
  - Unreliable
  - No visibility
  - No traceability
- Complex partner / customer on-boarding
  - Time consuming manual task for IT
  - Customer communicating in different formats over different protocols
  - High error margins
  - Operational overhead and complexity



## CIO's struggle with dramatic increase of data exchange

### Reach



# 90%

Enterprise apps available on mobile by 2017<sup>1</sup>

- Social
- Cloud
- Mobile

### Growth



# 75X

Growth factor of the number of files with which a data center will have to deal<sup>2</sup>

- Size
- Volume
- Complexity

### Speed



# 1–2 months

Time spent, annually, creating and amending compliance reports by 36 percent of respondents<sup>3</sup>

- Real-time risk identification
- Demands for quicker audit response

#### Data exchange and transfer implications

- More file-based information moving inside and outside the organization
- More points of connections
- More methods of transfer (business to business [B2B], system-centric, person-centric)

<sup>1</sup> Gartner, "Bring your own Device Program Best Practices", December 20, 2012, <http://www.gartner.com/technology/topics>

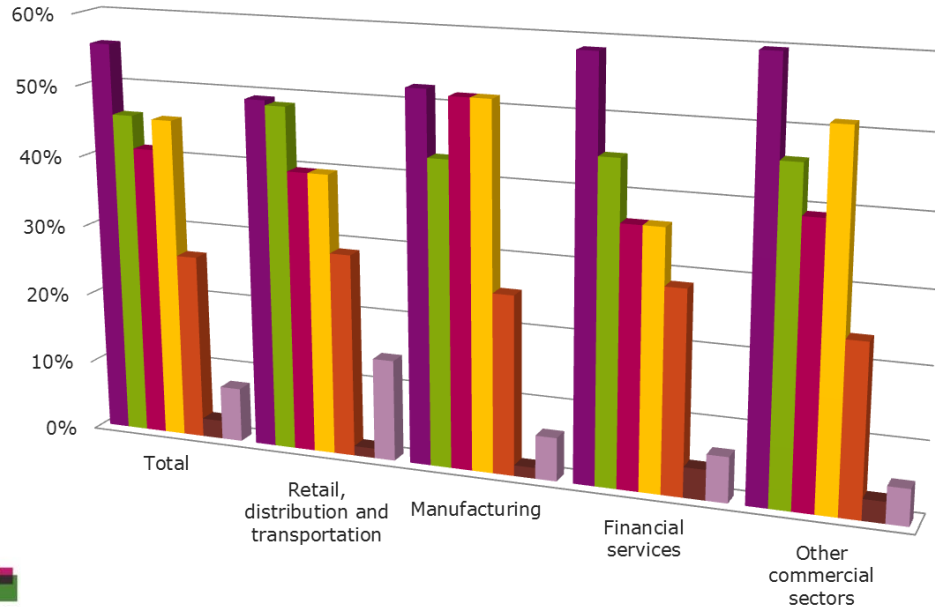
<sup>2</sup> IDC, *Extracting Value from Chaos*, Doc #1142, June 2011.

<sup>3</sup> Thomson Reuters Accelus, *Cost of Compliance Survey 2013*, Susannah Hammond and Jane Walshe, February 2013.



# Top concerns around Managed File Transfer across industry

Which of the following issues limits the effectiveness of your file transfer systems?



■ Security ■ Growth ■ Complexity ■ Speed

2013 Vanson Bourne B2B Integration and MFT Global Study for IBM



The IBM Managed File Transfer suite enables enterprises to reliably and securely govern all critical information flows across the business



## Governance

Actionable visibility for business, operations and compliance

System-centric



Automated, reliable, secure transfers for system integration

Community-centric



Multi-protocol edge gateway for universal connectivity to the business community

Person-centric



File sync and share

Emerging use cases



Extreme Sync Direct to Cloud  
...



## eXtreme

Large file/data set, long distance, speed is critical



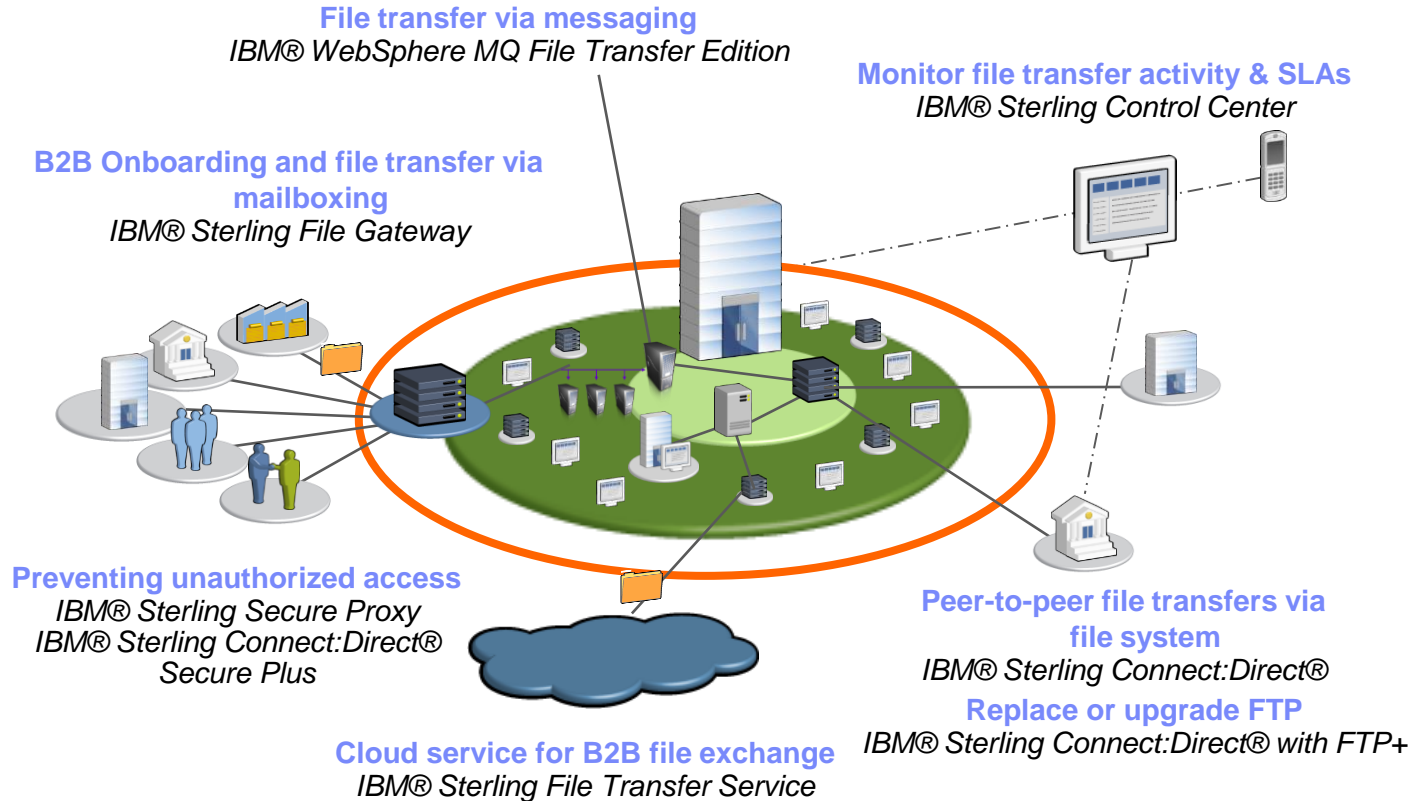
## Security

Common perimeter services, proxy and authentication





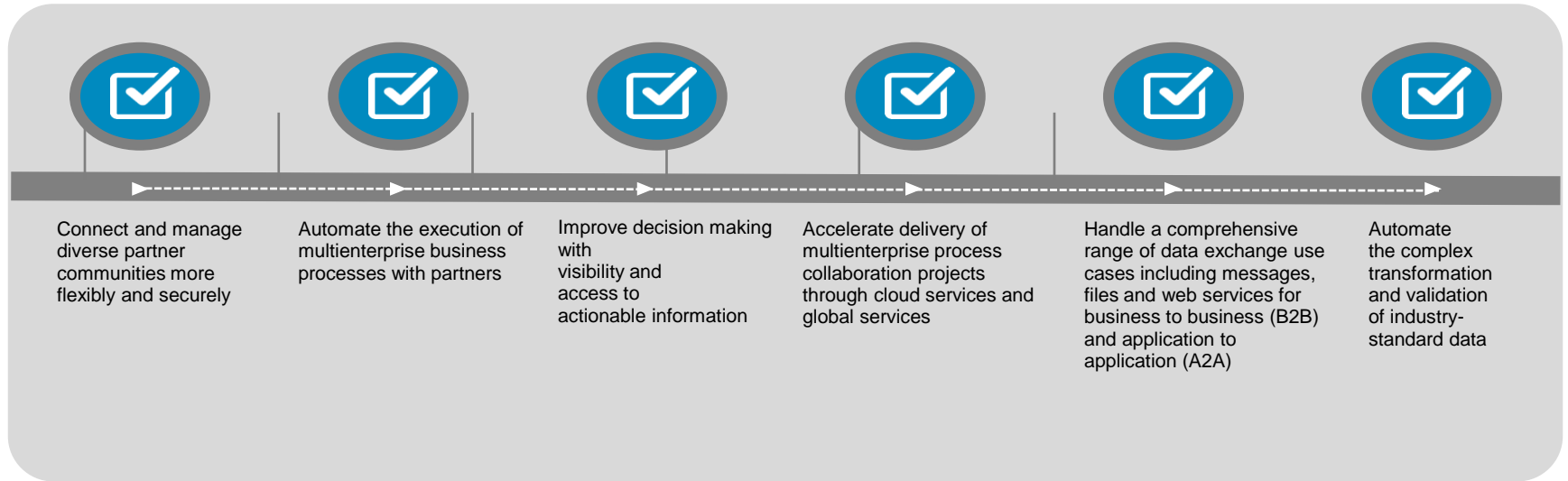
# IBM® Managed File Transfer Solution





# The multi-enterprise process collaboration solution from IBM helps you overcome these challenges

IBM Sterling B2B Integration can help your organization synchronize critical information flows with partners, suppliers and customers. This solution is designed to:





## Business outcomes

*BUSINESS OUTCOMES:*

**Decrease** *time to revenue from new customers, suppliers and partners*

**Reduced** *security exposure from data exchange*

**Removed** *latency and cost from the value chain*

**Became** *easier to do business with*

**Accelerated** *resolution of issues and increased customer satisfaction*

**Blue Rhino**

**75%**

*Reduction in partner onboarding time*



# Extreme File Transfer solution embedded into the IBM Managed File Transfer portfolio



## Governance

Actionable visibility for business, operations and compliance

System-centric



Automated, reliable, secure transfers for system integration

Community-centric



Multi-protocol edge gateway for universal connectivity to the business community

Person-centric



File sync and share

Emerging use cases



Extreme Sync  
Direct to Cloud  
...



## eXtreme

Large file/data set, long distance, speed is critical

XFT



## Security

Common perimeter services, proxy and authentication



## Aspera High-speed Transfer

- Moving the world's data at maximum speed



# An innovator in moving the world's biggest data at maximum speed

## Capabilities:

Extreme file transfer software, Enterprise File Sync and Share, Email/mobile/cloud integration

## Founded:

2004 in Emeryville, California

## Markets Served:

Over 2000 customers in Media & Entertainment, Government, Telecommunications and Life Sciences

## Sweet spot:

Large files/data sets, long distance, where speed is critical

## The Aspera Difference:

Patented *fasp*™ transport technology





## Technology shifts are creating IT challenges



### *Big data and advanced analytics*

- How to move big data/sets to analytic platforms*



### *Cloud computing*

- How to move data to – through – from cloud platforms*

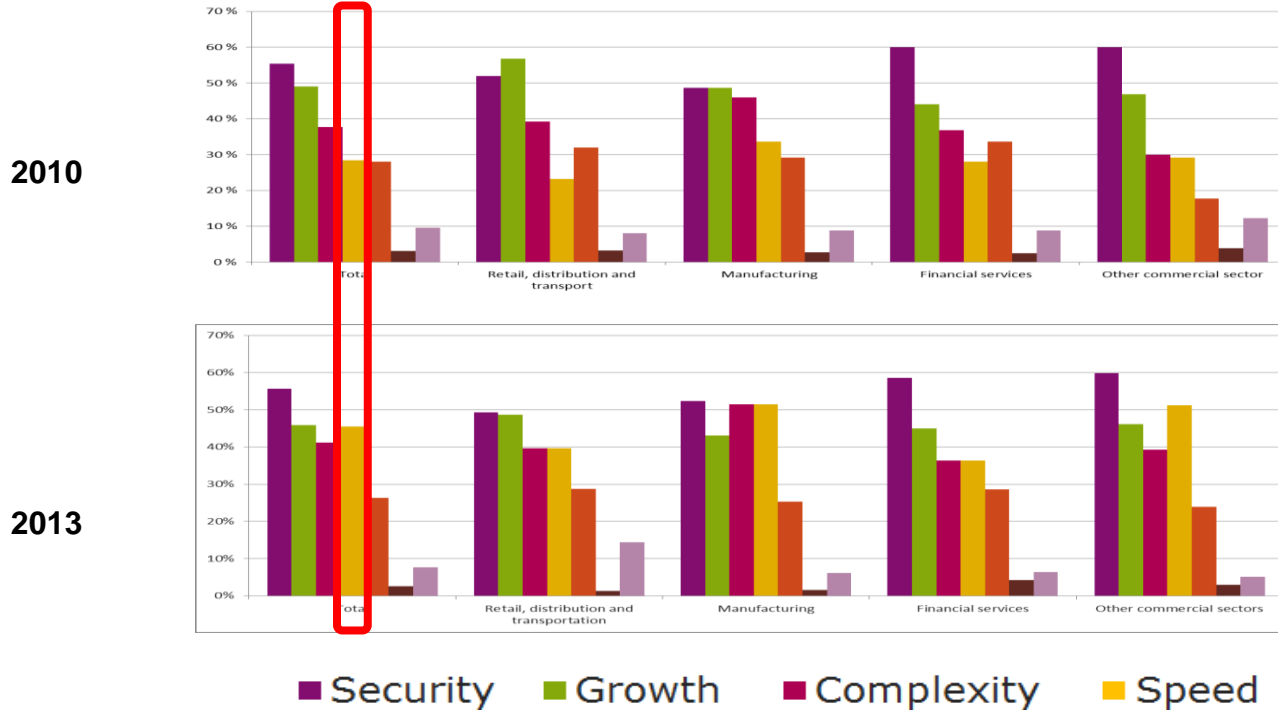


### *Mobile*

- How to provide enterprise secure ways to sync and share data*



But the biggest jump in the last three years has been in the concern over speed (transfer speed and efficiency)







# Larger volumes and size of data has created challenges in many industries



## Telco, Media and Entertainment

- *Challenged to effectively distribute large media assets through their rapidly expanding digital supply chain*



## Life Sciences

- *access Big Data sets that are changing daily (e.g. Genomic data)*



## Government

- *Critical analysis hampered by slow transfer of intelligence data sets (e.g. satellite surveillance imagery)*



## IT application development

- *Faced with challenges to global development, QA, test and support of large-scale applications and engineering processes*



## Oil, Gas and Next Gen Energy

- *Challenged to move giant seismic data sets from remote locations across data centers for processing and analysis*



## Financial Services

- *Depend on high speed synchronization of data across geographies for critical business continuity capabilities*



## Aspera delivers clear business value

20x

Reduction in transfer times – transfer that was taking 10 hours now 26 min.



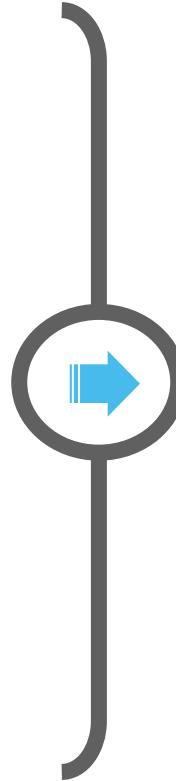
4x

Reduction in process turnaround – media collection to broadcast from 6 to 1.5 days



97%

Increase in network utilization – from 2% to 99% for file transfer



### *Business outcomes*

- *Speed the process synchronization for digital supply chains*
- *Provide high performance distribution and synchronization of Big Data sets*
- *Accelerate the reliable flow of information and the processes that depend upon it*
- *Enable organizations to reliably, quickly and securely move new workloads to/from the cloud*



# Performance tests demonstrate the advantage

Distance

File Sizes

Bandwidth Scenarios

		Across US		US – Europe		US – ASIA	
		10 CB	100 GB	10 GB	100 GB	10 GB	100 GB
FTP	100 Mbps						
	1 Gbps	10-20 Hrs	Impractical	15-20 Hrs	Impractical	Impractical	Impractical
	10 Gbps						
Aspera fasp™	100 Mbps	14 Min	2.3 Hrs	14 Min	2.3 Hrs	14 Min	2.3 Hrs
	1 Gbps	1.4 Min	14 Min	1.4 Min	14 Min	1.4 Min	14 Min
	10 Gbps	8.4 Sec	1.4 Min	8.4 Sec	1.4 Min	8.4 Sec	1.4 Min

Cross US – Add 1% to 5% Intercontinental – Add 1% to 10%

**SPEED:** Much faster than TCP-based protocols like FTP over a WAN (example of a 10Gb file)

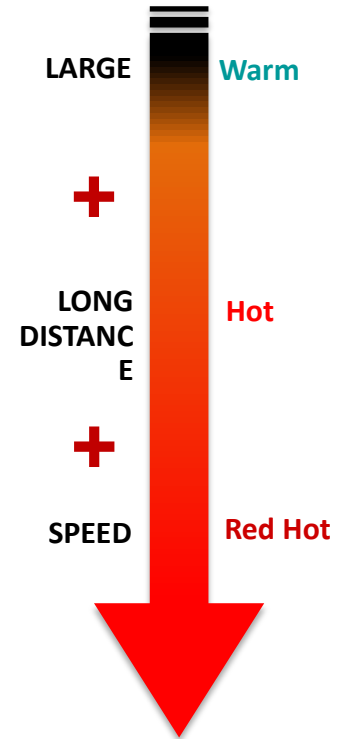
**PREDICTABILITY:** Predictable performance over any distance

**SCALE:** Performance scales with available Bandwidth



## Keys to uncovering a need for Aspera: Large, Long distance and Speed critical

- Is it **LARGE** Files/Data sets?
  - Start at 10GB as reasonable definition
- Is the transfer over a **LONG DISTANCE** (cross-country or global)?
  - Type of the network doesn't matter: Public/private, WAN network or Satellite
- Is this file delivery **SPEED CRITICAL** to the business?
  - Is Predictability, Reliability and Visibility important? (business cares)





## IBM experience

### Reliable solutions

*to manage risk and protect your critical business information*

- *50 + customers in the Middle East rely on Connect: Direct protocol which has never been breached*

### 30,000+

*satisfied clients worldwide with solutions that address the needs of many industries*

- *80 percent of the top global banks (based on assets or marketplace capitalization)*
- *Leading global retailers on four continents*
- *Leading manufacturers in North America, Europe and Japan*
- *Major government agencies from North America to Australia*
- *Healthcare providers and payers in the United States and major pharmaceutical firms in North America and Europe*

### 5.5 million

*transactions daily through the B2B cloud*

- *A global network provides access to 300,000 pre-connected trading entities*



## Why IBM?

### **Breadth of capability to help meet your requirements**

*Managed file transfer, integration gateways, integration services and transformation engines*



### **Analyst rankings as an integration leader**

*Gartner, Magic Quadrant for On-Premises Application Integration Suites, June 27, 2013*

*Gartner, Magic Quadrant for Application Infrastructure for Systematic Application Integration Projects, June 20, 2012*



### **Customer flexibility—right solution, right away**

*Modular architecture: buy for specific project or enterprise wide*

*Platform choice: desktop, midrange or mainframe*

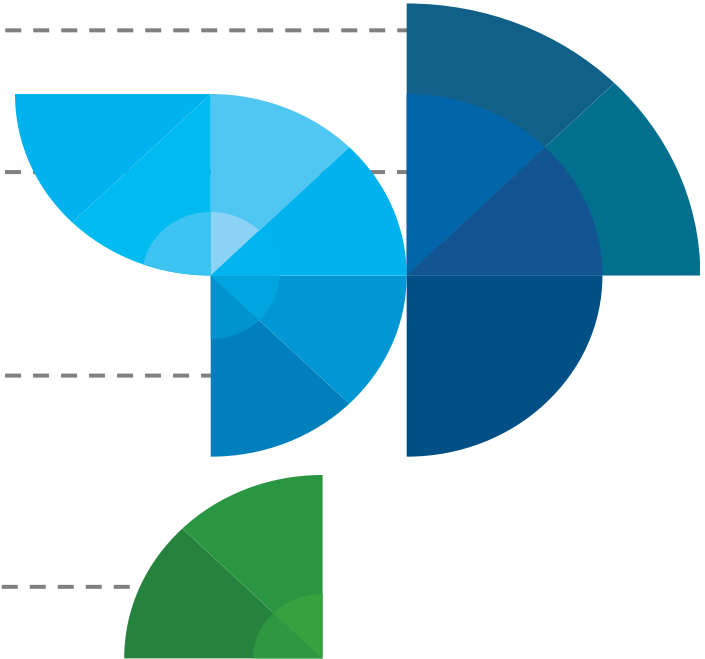


### **Superior global consulting and local business partner expertise**

*Experienced in building integration centers of excellence*

*Provides guidance in B2B best practices from assessment to implementation*

*Global deployment experience across industries*





***Thank you.***

**bart.debecker@ae.ibm.com**

**Mobile: +971 566 765 767**