

Client Installation & Client Switching Instructions

To install the client and switch between RPM releases users will need the following files, which were part of the note sent to all UAT participants.

Follow these instructions below to install Multi-PMO-RPM Installer and the RPM Client Manager.

1. Place the Multi-PMO_RPMv1.11_setup.exe file on your desktop
2. Double click on the exec and follow the directions to install.
3. When finished delete the icon for "Multi-PMO_RPMv1.11_setup.exe". DO NOT delete the "Multi-PMO-RPM Installer".
4. Place the RPM_Multi-Manager_v1.6_Setup.exe file on your desktop.
5. Double click on the exec and follow the directions to install.
6. When finished delete the icon for "RPM_Multi-Manager_v1.6_Setup.exe". DO NOT delete the "RPM Clients Manager".

Now you are ready to install a different version of RPM and switch between them. Follow these directions to install a new release.

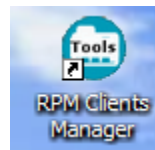
1. Place the client install exe on your desktop.
2. Double click on the Multi-PMO-RPM Installer icon and follow the instructions.
3. When asked to select the installation file, select the **InstallIBMRRPMStdIn.exe** file that you have placed on your desktop.
4. When the installation is complete, there should be an icon for bringing up the version you already have on your workstation and the version you just installed.

Notes:

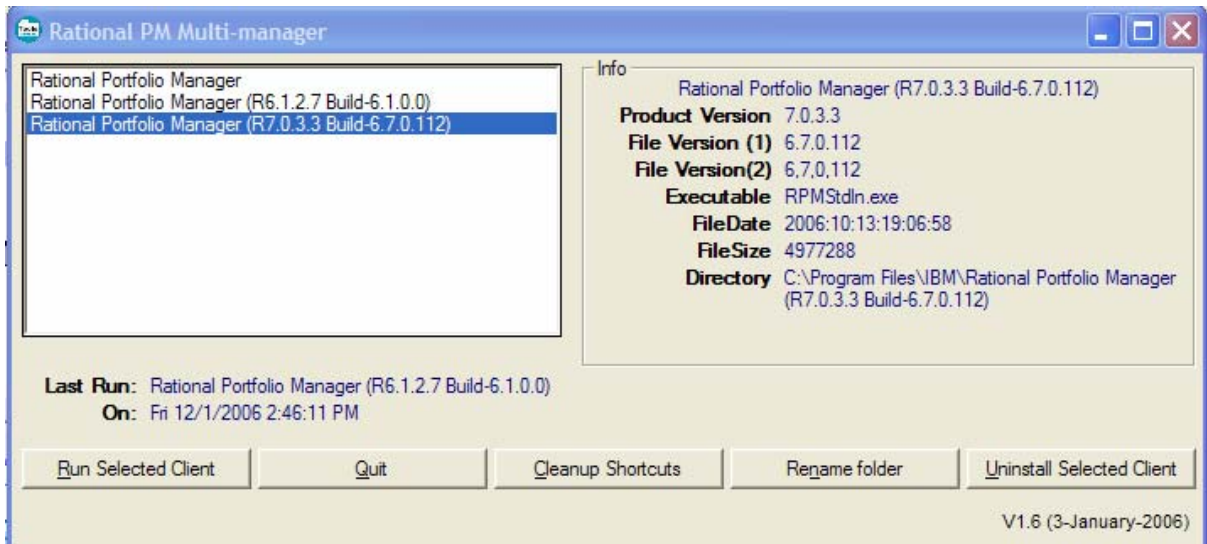
1. Users can only use one version at a time.
2. It is recommended to start RPM using the "RPM Clients Manager." Using the RPM Clients Manager ensures you only run a single version at a time.
3. **Always** use the "Multi-PMO-RPM Installer" when installing a new version of RPM.
4. **Never** accept a new install of a client when using the Multi-installer.

Using the RPM Clients Manager

Follow these steps to use the RPM Clients Manager:



1. Double click on the RPM clients Manager icon:
2. The "Rational PM Multi Manager" window opens:



3. Select the appropriate version of RPM (detailed information is shown in the “Info” box).
4. Click on the “Run Selected Client”