



IBM Software

Integrating IBM's Solutions

System and Performance Management of z/VM and Linux on System z

Tracy Dean, IBM
tld1@us.ibm.com
April 2008

© 2008 IBM Corporation

IBM Software



Agenda

- **Introduction**
- **Architectural overview**
- **Performance management scenarios**
- **System and storage management scenarios**
- **Summary**

Introduction

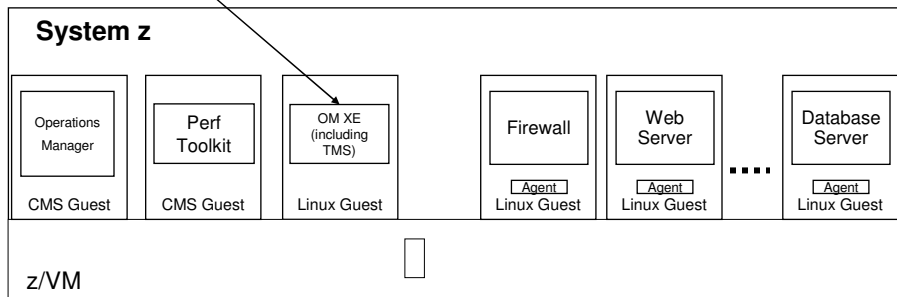
- **Products**
 - Tivoli OMEGAMON XE on z/VM and Linux
 - Operations Manager for z/VM
 - Backup and Restore Manager for z/VM
 - Tape Manager for z/VM
 - Archive Manager for z/VM
- **Scenarios for system and performance management**
 - z/VM systems with Linux guests
 - z/VM systems without Linux guests

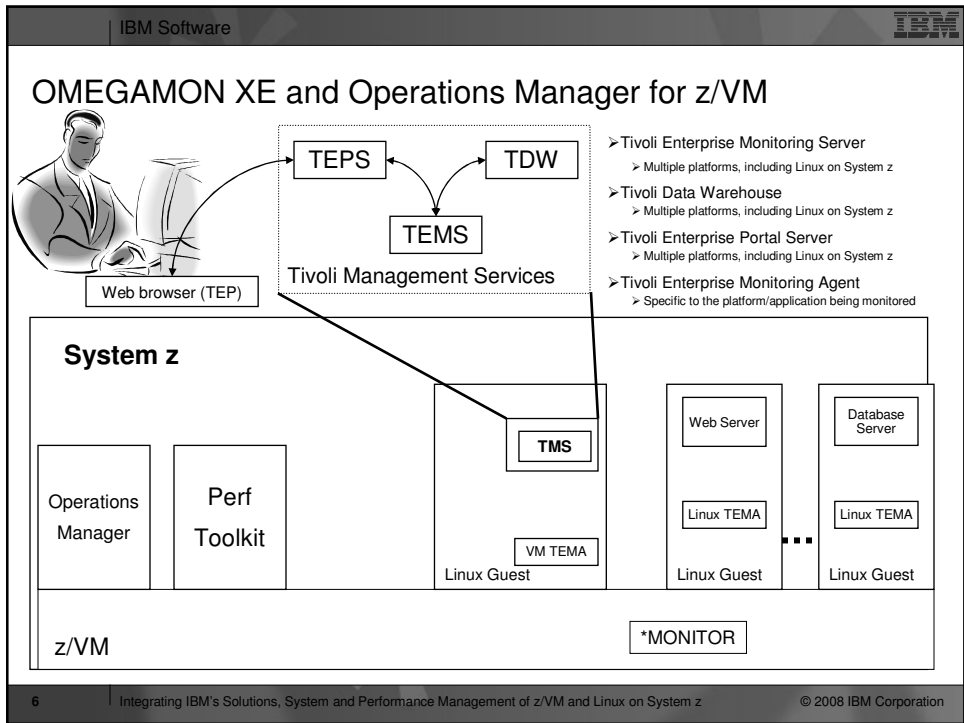
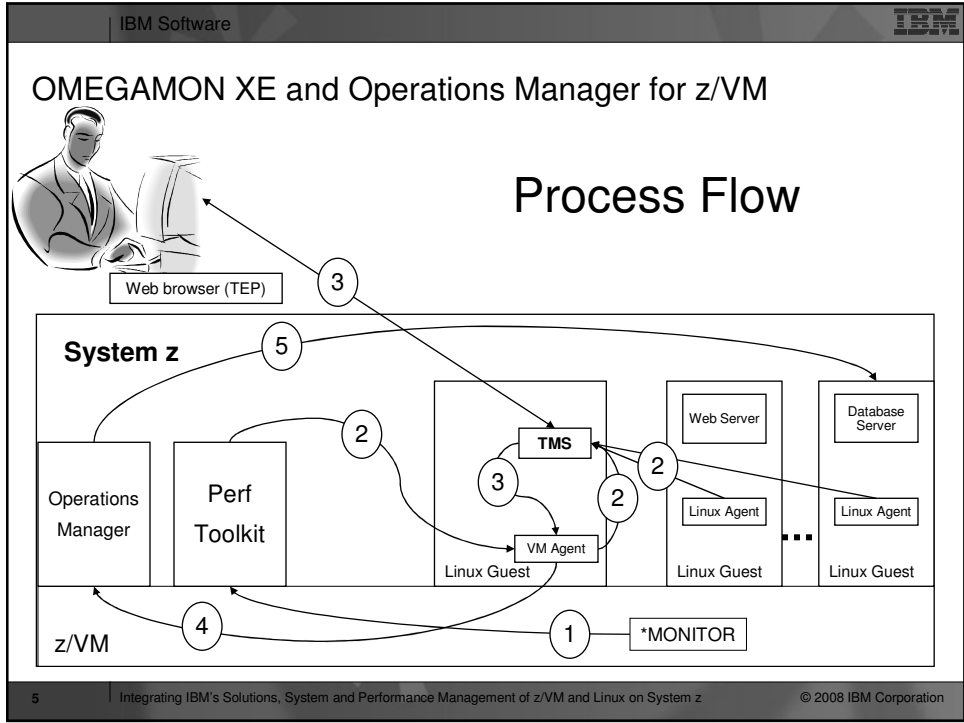
Monitoring and Management of z/VM and Linux Guests



Tivoli Enterprise Portal
(Web browser)

- OMEGAMON XE on z/VM and Linux
 - Performance monitoring for z/VM and Linux guests
 - Part of Tivoli Management Services (TMS) infrastructure
 - Intuitive browser-based user interface
 - Consolidated view of host and guest metrics
- Operations Manager for z/VM
 - Monitor consoles of z/VM service machines and guest user IDs
 - Take actions based on console messages
 - Respond to "take action" requests from OMEGAMON
 - Schedule routine tasks







IBM Software

Demo / Screenshots

© 2008 IBM Corporation



IBM Software

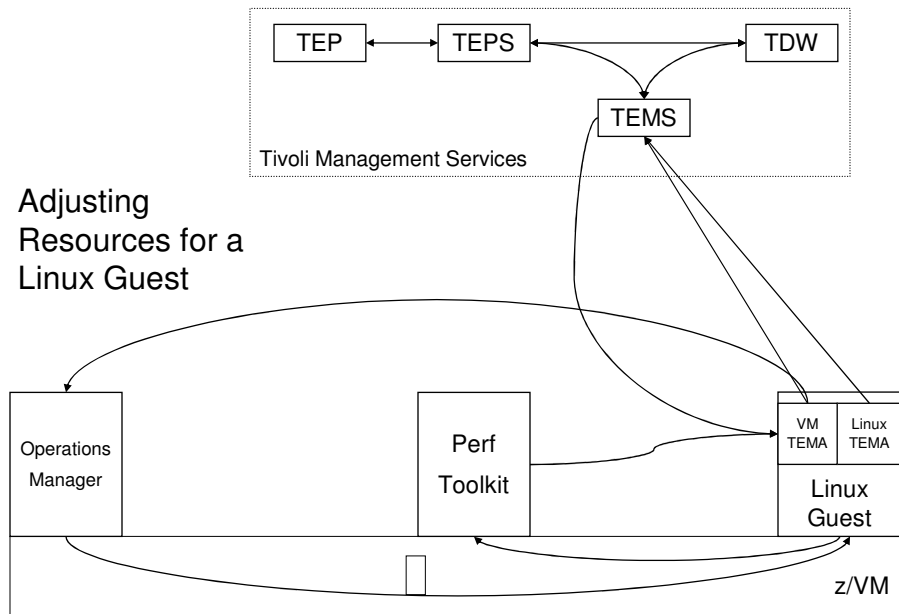
OMEGAMON and Operations Manager Performance Management Scenarios

© 2008 IBM Corporation

Adjusting Resources for a Linux Guest

- **Virtual CPU consumption is high for a Linux guest**
- **OMEGAMON XE detects the situation**
 - Sends message to Operations Manager
- **Action is triggered by a rule in Operations Manager**
- **Operations Manager issues CP commands to tune the guest**
 - SET QUICKDSP
 - SET SHARE
- **The triggered policy and action are viewable from TEP**

Adjusting Resources for a Linux Guest





IBM Software

System and Storage Management Scenarios

© 2008 IBM Corporation

IBM Software



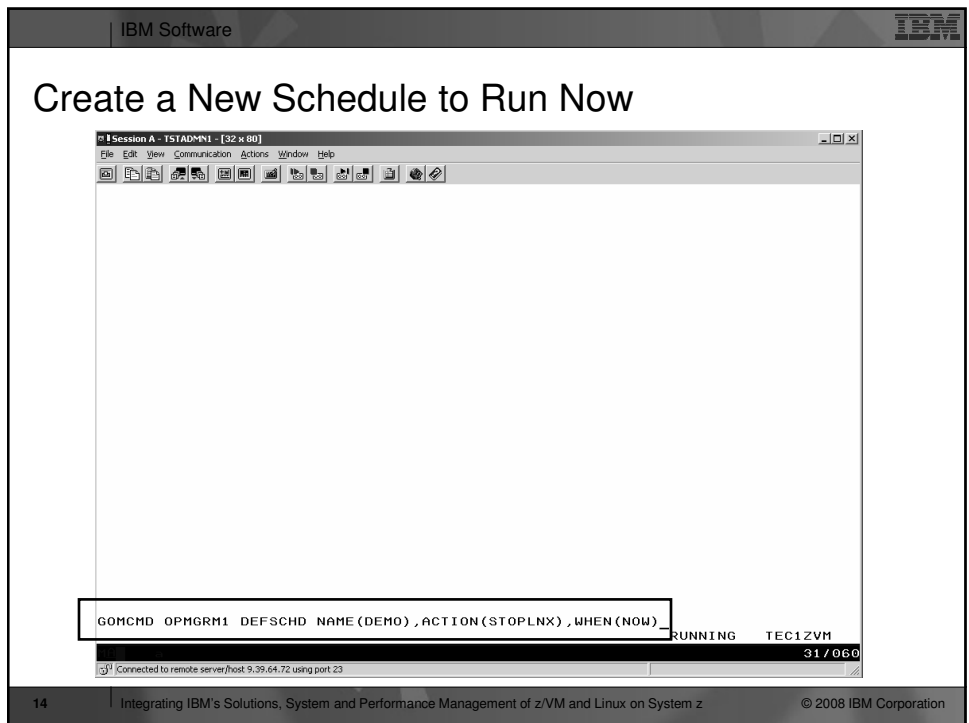
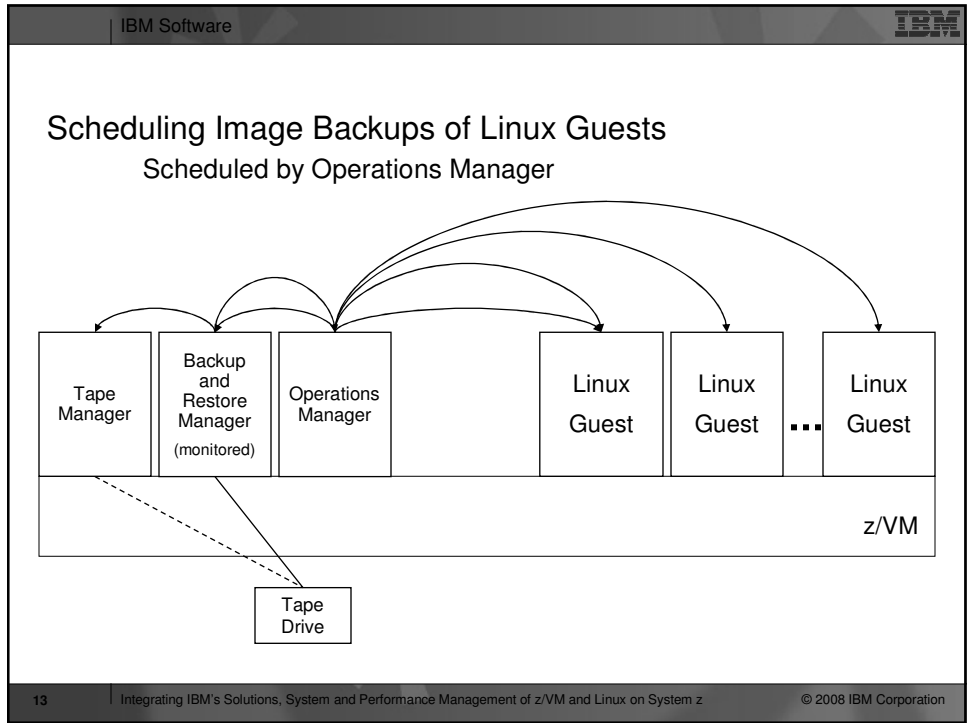
Scheduling Image Backups of Linux Guests

- **Initiated or scheduled by Operations Manager**
 - Schedule defined in Operations Manager to initiate backups at specific times/intervals
 - May include multiple schedules to allow quiescing/backing up one guest at a time
 - Action associated with each schedule
 - Linux guest is quiesced
 - Request sent to Backup and Restore Manager to back up the specific DASD/minidisks requested
 - Operations Manager notified when the action is complete
 - Linux guest is reactivated

12

Integrating IBM's Solutions, System and Performance Management of z/VM and Linux on System z

© 2008 IBM Corporation



IBM Software

View Operations Manager Log to See Schedule Triggered

```

Session A - TSTADMIN1 - [32 x 80]
File Edit View Communication Actions Window Help
03/01/2008 17:52:21 GOMCMD0201L "TSTADMIN1DEFSCHD NAME(DEMO),ACTION(STOPLNX),WH
03/01/2008 17:52:22 GOMACT0260I SCHEDULE DEMO ACTION STOPLNX TRIGGERED BY
03/01/2008 17:52:22 GOMACT0262I ACTION STOPLNX BEGIN FOR SCHEDULE SERVER OPMG
03/01/2008 17:52:22 GOMACT0269I COMMAND "RESUME RULE(LNXDOWN)"
03/01/2008 17:52:22 GOMCMD0201L "OPMGRM1 RESUME RULE(LNXDOWN)" VID=OPMGRM1 SR
03/01/2008 17:52:22 GOMACT0267I ACTION STOPLNX END RC=0 SERVER OPMGRM1
03/01/2008 17:52:22 GOMACT0260I SCHEDULE DEMO ACTION STOPLNXA TRIGGERED BY
03/01/2008 17:52:22 GOMACT0262I ACTION STOPLNXA BEGIN FOR SCHEDULE SERVER OPMG
03/01/2008 17:52:22 GOMACT0269I COMMAND "CP SET SECUSER OMEGLNX1 OPMGRM1"
03/01/2008 17:52:22 GOMACT0267I ACTION STOPLNXA END RC=0 SERVER OPMGRM1
03/01/2008 17:52:22 GOMACT0260I SCHEDULE DEMO ACTION STOPLNXB TRIGGERED BY
03/01/2008 17:52:22 GOMACT0262I ACTION STOPLNXB BEGIN FOR SCHEDULE SERVER OPMG
03/01/2008 17:52:22 GOMACT0269I COMMAND "CP SIGNAL SHUTDOWN OMEGLNX1 WITHIN 90
03/01/2008 17:52:22 GOMACT0267I ACTION STOPLNXB END RC=0 SERVER OPMGRM1
03/01/2008 17:52:22 GOMCMD0216L "OMEGLNX1Broadcast message from root (console)
03/01/2008 17:52:22 GOMCMD0216L "OMEGLNX1The system is going down for reboot N
03/01/2008 17:52:22 GOMCMD0216L "OMEGLNX1INIT: Switching to runlevel: 6" VID=*
03/01/2008 17:52:22 GOMCMD0216L "OMEGLNX1INIT: Sending processes the TERM sign
"TSTADMIN1VIEWLOG" VID=TSTADMIN1 SRC=MASIUCV CL
03/01/2008 17:52:26 GOMCMD0216L "OMEGLNX1INIT: Sending processes the KILL sign
"OMEGLNX1Boot logging started on /dev/ttyS0(/d
03/01/2008 17:52:33 GOMCMD0216L "OMEGLNX1Master Resource Control: previous run
03/01/2008 17:52:36 GOMCMD0216L "OMEGLNX1Shutting down CRON daemon" VID=*MSG
03/01/2008 17:52:36 GOMCMD0216L "OMEGLNX1..done" VID=*MSG SRC=MASIUCV CLS
03/01/2008 17:52:38 GOMCMD0216L "OMEGLNX1Shutting down mail service (Postfix).
03/01/2008 17:52:39 GOMCMD0216L "OMEGLNX1Shutting down service kdm" VID=*MSG
03/01/2008 17:52:40 GOMCMD0216L "OMEGLNX1..done" VID=*MSG SRC=MASIUCV CLS
03/01/2008 17:52:41 GOMCMD0216L "OMEGLNX1Shutting down Name Service Cache Daem
03/01/2008 17:52:42 GOMCMD0216L "OMEGLNX1..done" VID=*MSG SRC=MASIUCV CLS
03/01/2008 17:52:43 GOMCMD0216L "OMEGLNX1Shutting down cupsd" VID=*MSG SRC
MASALOG
31/001
Connected to remote server/host 9.39.64.72 using port 23

```

15 Integrating IBM's Solutions, System and Performance Management of z/VM and Linux on System z © 2008 IBM Corporation

IBM Software

View Linux Guest Console – Observe Shutdown

```

Session A - TSTADMIN1 - [32 x 80]
File Edit View Communication Actions Window Help
03/01/2008 17:52:21 Broadcast message from root (console) (Sat Mar 1 11:52:22
03/01/2008 17:52:21 The system is going down for reboot NOW!
03/01/2008 17:52:21 INIT: Switching to runlevel: 6
03/01/2008 17:52:21 INIT: Sending processes the TERM signal
03/01/2008 17:52:26 INIT: Sending processes the KILL signal
03/01/2008 17:52:32 Boot logging started on /dev/ttyS0(/dev/console) at Sat Mar
03/01/2008 17:52:32 Master Resource Control: previous runlevel: 5, switching to
03/01/2008 17:52:35 Shutting down CRON daemon
03/01/2008 17:52:35 ..done
03/01/2008 17:52:37 Shutting down mail service (Postfix)..done
03/01/2008 17:52:38 Shutting down service kdm
03/01/2008 17:52:39 ..done
03/01/2008 17:52:41 Shutting down Name Service Cache Daemon
03/01/2008 17:52:41 ..done
03/01/2008 17:52:42 Shutting down cupsd
03/01/2008 17:52:42 ..done
03/01/2008 17:52:44 Shutting down slpd ..done
03/01/2008 17:52:48 Shutting down sound driver..done
03/01/2008 17:52:48 Shutting down SSH daemon..done
03/01/2008 17:52:50 Remove Net File System (NFS)..unused
03/01/2008 17:52:53 Umount SMB/ CIFS File Systems ..done
03/01/2008 17:52:53 Shutting down resource manager..done
03/01/2008 17:52:53 Shutting down RPC portmap daemon
03/01/2008 17:52:53 ..done
03/01/2008 17:52:55 Shutting down syslog servicesMar 1 11:52:55 stes9 kernel:
03/01/2008 17:52:55 Mar 1 11:52:55 stes9 kernel: Kernel log daemon terminating
03/01/2008 17:52:56 ..done
03/01/2008 17:53:08 Shutting down network interfaces:
03/01/2008 17:53:12 eth0
03/01/2008 17:53:12 eth0 configuration: qeth-bus-ccw-0.0.0600
OMEGLNX1
31/001
Connected to remote server/host 9.39.64.72 using port 23

```

16 Integrating IBM's Solutions, System and Performance Management of z/VM and Linux on System z © 2008 IBM Corporation

IBM Software

Wait for System Down or Time Out Message

```

03/01/2008 17:53:52 HCPSIG2112I Signal timeout interval has expired
03/01/2008 17:54:05 System Boot Control: Running /etc/init.d/boot
03/01/2008 17:54:05 Mounting /proc filesystem..done
03/01/2008 17:54:05 Mounting /dev/pts..done
03/01/2008 17:54:05 Boot logging started on /dev/ttyS0(/dev/console) at Sat Mar
03/01/2008 17:54:06 Mounting shared memory FS on /dev/shm..done
03/01/2008 17:54:06 Checking root file system...
03/01/2008 17:54:06 fsck 1.34 (25-Jul-2003)
03/01/2008 17:54:06 Y/sbin/fsck.ext3 (1) -- /" fsck.ext3 -a /dev/dasda1
03/01/2008 17:54:06 /dev/dasda1: clean, 147891/903168 files, 1161423/1802856 bl
03/01/2008 17:54:06 Y1A..doneEXT3 FS on dasda1, internal journal
03/01/2008 17:54:06 md: Autodetecting RAID arrays.
03/01/2008 17:54:06 md: ..done
03/01/2008 17:54:06 md: ..autorun DONE.
03/01/2008 17:54:06 Activating device mapper...
03/01/2008 17:54:06 device-mapper: 4.1.0-ioctl (2003-12-10) initialised: dm@uk.
03/01/2008 17:54:06 Creating /dev/mapper/control character device with major:10
03/01/2008 17:54:06 ..done
03/01/2008 17:54:06 Scanning for LVM volume groups...
03/01/2008 17:54:06 Reading all physical volumes. This may take a while...
03/01/2008 17:54:06 No volume groups found
03/01/2008 17:54:06 Activating LVM volume groups...
03/01/2008 17:54:06 No volume groups found
03/01/2008 17:54:06 ..skipped
03/01/2008 17:54:07 Checking file systems...
03/01/2008 17:54:07 fsck 1.34 (25-Jul-2003)
03/01/2008 17:54:07 Checking all file systems.
03/01/2008 17:54:07 Y/sbin/fsck.ext3 (1) -- /opt" fsck.ext3 -a /dev/dasdc1
03/01/2008 17:54:07 /dev/dasdc1: clean, 51207/903168 files, 365087/1802856 bloc
-
OMEGLNX1
31 / 001

```

17 Integrating IBM's Solutions, System and Performance Management of z/VM and Linux on System z © 2008 IBM Corporation

IBM Software

View Backup Manager Console (BKR BKUP)

```

***
*SMSG OPMGRM1 SUBMIT BKUPLNX1
***
BKRBAK8515I Queued command #1: "*SMSG OPMGRM1 SUBMIT BKUPLNX1"
BKRBAK8532I Processing SUBMIT BKUPLNX1 command for OPMGRM1 at 03/01/08 17:53:52
NOTE LOGON *** BKRWRK01 USERS 23
HCPCLS6056I XAUTOLOG information for BKRWRK01: The IPL command is verified by t
Output line 1 : BKRMAK8559I INCLUDE / EXCLUDE processing for job BKUPLNX1 selec
ed 1 objects
Output line 2 : BKRMAK8559I for backup processing.
Output line 3 : BKRMAK8563I Worker count for job BKUPLNX1 has been set to 1.
Output line 4 : BKRMAK8570I Instance number 00000058 has been assigned for job
KUPLNX1.
Output line 5 : BKRMAK8568I CMS files will be filtered against file mask "* * *
Output line 6 : BKRMAK8560I 3FS filespace will be filtered with path mask "* *
Output line 7 : BKRMAK8584I Sending BKUPLNX1 JOB D to worker task BKRWRK01.
Output line 8 : File BKUPLNX1 JOB D1 sent to BKRWRK01 at TEC1ZVM on 03/01/08 17
53:53
BKRBAK8510I 03/01/08 17:53:55 WAKEUP exited on a VMCF interrupt.
BKRBAK8512I The stack contains 1 entries. There are 0 lines on the console inpu
BKRBAK8513I Program stack entry dump:
***
*SMSG BKRWRK01 WRKRSTAT TURNDON
***
BKRBAK8515I Queued command #1: "*SMSG BKRWRK01 WRKRSTAT TURNDON"
BKRBAK8519I Processing WRKRSTAT command TURNDON from *SMSG BKRWRK01.
BKRBAK8510I 03/01/08 17:53:56 WAKEUP exited on a VMCF interrupt.
BKRBAK8512I The stack contains 1 entries. There are 0 lines on the console inpu
BKRBAK8513I Program stack entry dump:
-
BKR BKUP
31 / 001

```

18 Integrating IBM's Solutions, System and Performance Management of z/VM and Linux on System z © 2008 IBM Corporation

IBM Software

View Backup Worker Console (BKRWRK01)

```

Session A - TSTADMINI - [32 x 80]
File Edit View Communication Actions Window Help
-----
BKRVRB9011I Job name: BKUPLNX1, instance identifier 00000058 starting at 17:53:
BKRVRB9011I Job owner: BKRADHIN
BKRVRB9011I Master backup server: BKRBKUP; worker virtual machine BKRWRK01.
BKRVRB9011I Job token value is 20080301.
BKRVRB9012I Catalog content creation is ENABLED.
BKRVRB9012I Catalog content will be delivered to backup catalog server BKRCATLG
BKRVRB9012I Temporary catalog granule data will be generated in CMS file BKUPLN
-----
BKRVRB9161I Scanning DISKPOOL "LNXBKUP DISKPOOL" for a volume with at least 418
BKRVRB9162I DISKPOOL volume AMVCATLG 333 has 7953 K blocks free.
BKRVRB9163I Continuing backup with output to AMVCATLG 333.
OMEGLNX1 0191 RR EDF 4096 0X1191 00009000 00003974 00000050 00000050 00000011
-----
BKRVRB9014I Job completed at 17:54:03 on 03/01/08.
BKRVRB9005I Executing CP command QUERY TIME
TIME IS 17:54:03 UTC SATURDAY 03/01/08
CONNECT= 00:00:09 VIRTCPU= 000:00.04 TOTCPU= 000:00.09
BKRVRB9006I CP return code 0
*
* BACKUP COMPLETE - OMEGLNX1 LINUX GUEST
* BACKUP COMPLETE - OMEGLNX1 LINUX GUEST
CP XAUTOLOG OMEGLNX1
-----
BKRWRK01
31 / 001
[32] Connected to remote server/host 9.39.64.72 using port 23

```

19 Integrating IBM's Solutions, System and Performance Management of z/VM and Linux on System z © 2008 IBM Corporation

IBM Software

View the Linux Guest Console – Guest is Restarting

```

Session A - TSTADMINI - [32 x 80]
File Edit View Communication Actions Window Help
-----
03/01/2008 17:53:52 H0ESIG2112I Signal timeout interval has expired
03/01/2008 17:54:05 System Boot Control: Running /etc/init.d/boot
03/01/2008 17:54:05 Mounting /proc filesystem..done
03/01/2008 17:54:05 Mounting sysfs on /sys..done
03/01/2008 17:54:05 Mounting /dev/pts..done
03/01/2008 17:54:06 Boot logging started on /dev/ttyS0(/dev/console) at Sat Mar
03/01/2008 17:54:06 Mounting shared memory FS on /dev/shm..done
03/01/2008 17:54:06 Checking root file system...
03/01/2008 17:54:06 fsck 1.34 (25-Jul-2003)
03/01/2008 17:54:06 Y/sbin/fsck.ext3 (1) -- /" fsck.ext3 -a /dev/dasda1
03/01/2008 17:54:06 /dev/dasda1: clean, 147891/903168 files, 1161423/1802856 bl
03/01/2008 17:54:06 Y/a..doneEXT3 FS on dasda1, internal journal
03/01/2008 17:54:06 md: Autodetecting RAID arrays.
03/01/2008 17:54:06 md: autorun ...
03/01/2008 17:54:06 md: ... autorun DONE.
03/01/2008 17:54:06 Activating device mapper...
03/01/2008 17:54:06 device-mapper: 4.1.0-ioctl (2003-12-10) initialised: dm@uk.
03/01/2008 17:54:06 Creating /dev/mapper/control character device with major:10
03/01/2008 17:54:06 ..done
03/01/2008 17:54:06 Scanning for LVM volume groups...
03/01/2008 17:54:06 Reading all physical volumes. This may take a while...
03/01/2008 17:54:06 No volume groups found
03/01/2008 17:54:06 Activating LVM volume groups...
03/01/2008 17:54:06 No volume groups found
03/01/2008 17:54:06 ..skipped
03/01/2008 17:54:07 Checking file systems...
03/01/2008 17:54:07 fsck 1.34 (25-Jul-2003)
03/01/2008 17:54:07 Checking all file systems.
03/01/2008 17:54:07 Y/sbin/fsck.ext3 (1) -- /opt" fsck.ext3 -a /dev/dasdcl
03/01/2008 17:54:07 /dev/dasdcl: clean, 51207/903168 files, 365087/1802856 bloc
-----
OMEGLNX1
31 / 001
[32] Connected to remote server/host 9.39.64.72 using port 23

```

20 Integrating IBM's Solutions, System and Performance Management of z/VM and Linux on System z © 2008 IBM Corporation

IBM Software

View the Linux Guest Console - Startup Complete

```

sles9 login:
sles9 login:
EXEC LXLOG OMEGLNX1
root
Password:

You have new mail in /var/mail/root.
Last login: Fri Feb 22 12:02:56 on ttyS0
CP SET SECUSER OMEGLNX1 OMEGACMD
Last login: Fri Feb 22 12:02:56 on ttyS0
SUSPEND RULE(LNXDOWN)
sles9: ~ # JBD: barrier-based sync failed on dasdcl - disabling barriers
Mar 1 11:54:23 sles9 kernel: JBD: barrier-based sync failed on dasdcl - disabl
HPCPCFX6768I Your SECUSER set to OMEGACMD by OPHGRM1.
  
```

OMEGLNX1 (Scroll) 31 / 001

21 Integrating IBM's Solutions, System and Performance Management of z/VM and Linux on System z © 2008 IBM Corporation

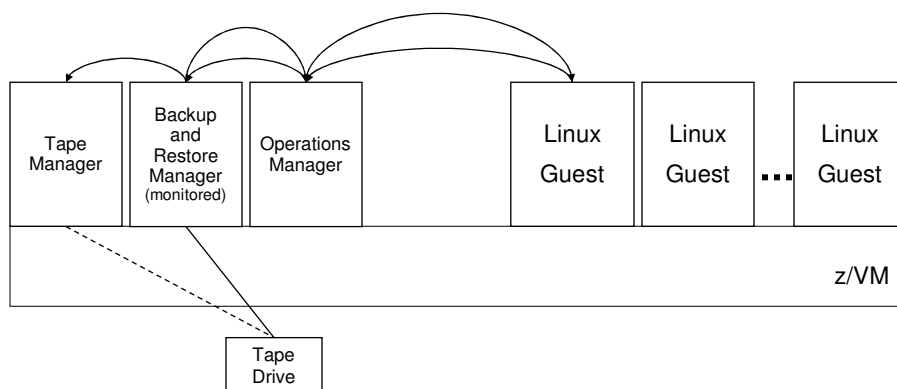
IBM Software

Performing an Image Backup of a Linux Guest

- **Initiated or scheduled by the guest**
 - Linux guest sends message/request to Operations Manager (or any console being monitored)
 - Action is triggered by a rule in Operations Manager
 - Linux guest is quiesced
 - Perhaps quiescing only the application running there
 - Operations Manager sends request to Backup and Restore Manager
 - Back up the specific DASD/minidisks requested
 - Operations Manager monitors the console of the backup server
 - Receives the message when backup is complete
 - Triggers a rule to re-activate the guest and send a message to the Linux guest indicating completion

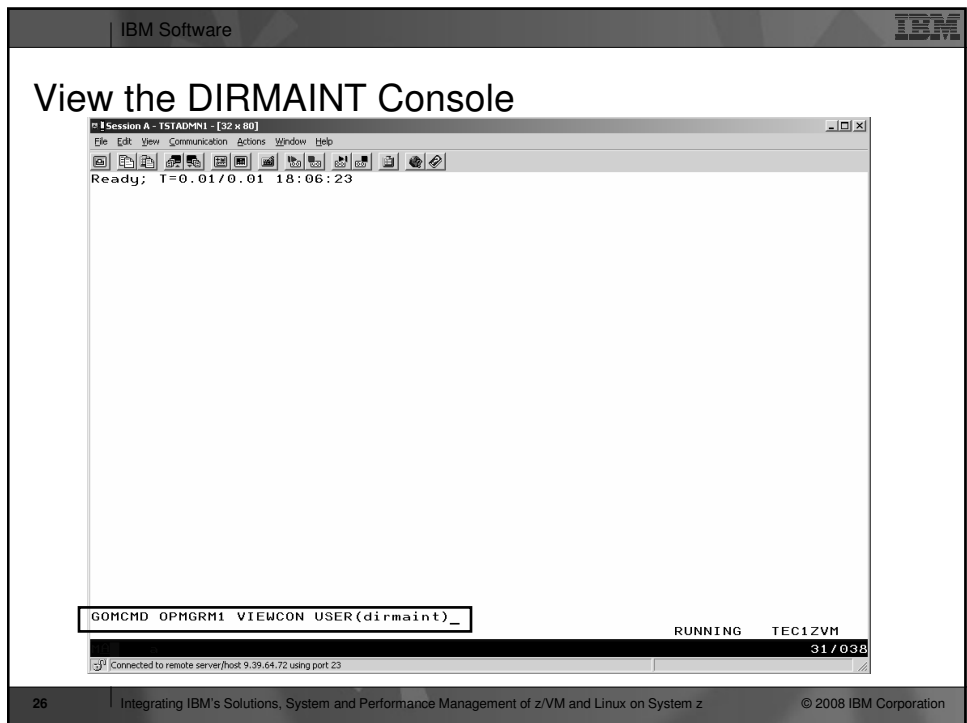
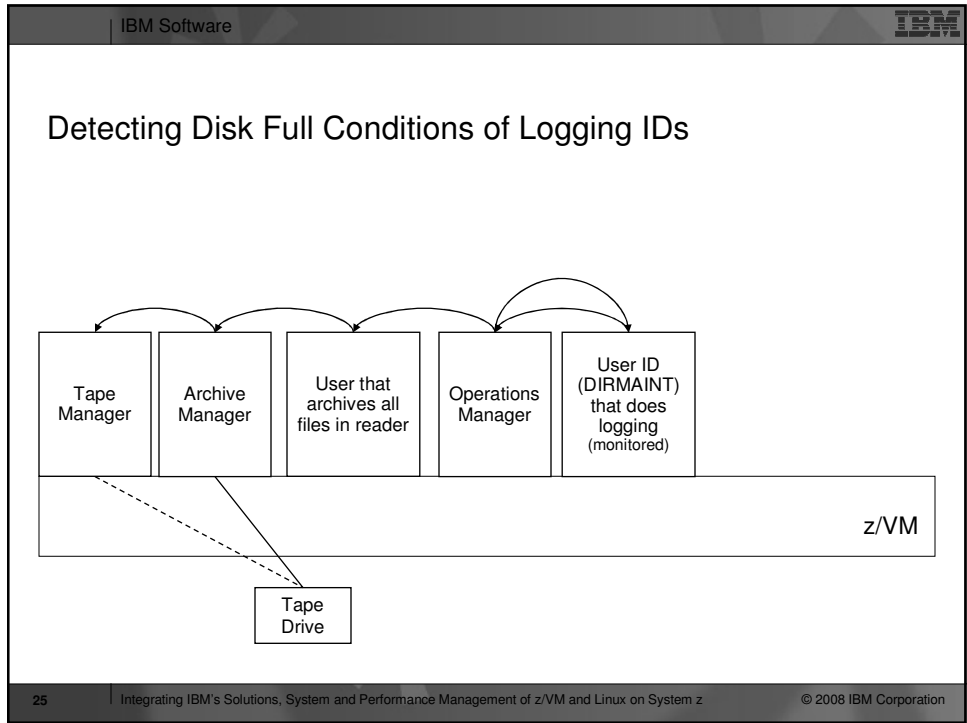
22 Integrating IBM's Solutions, System and Performance Management of z/VM and Linux on System z © 2008 IBM Corporation

Performing an Image Backup of a Linux Guest Initiated by the Linux Guest



Detecting Disk Full Conditions of Logging IDs

- **Operations Manager monitors the console of a user ID that does logging**
 - DIRMAINT, for example
- **Disk full or early warning message triggers a rule/action in Operations Manager**
 - Shut down the service machine
 - Send the log files to a service machine which automatically archives all files it receives
 - May involve Tape Manager if archiving to tape
 - Erase the log files
 - Restart the service machine



Issue Commands to Look at Disk Status and Copy Files

```

Session A - TSTADMNI - [32 x 80]
File Edit View Communication Actions Window Help
DVHMAI2140I Waiting for work on 08/03/01 at 18:06:02.
cms acc 333 t
DVHMAI2146I Wakeup caused by console attention on 08/03/01 at 18:08:21.
DIRMAINT TEC1ZVM. - 2008/03/01; T=0.01/0.01 18:08:21
DVHREQ2290I Request is: CMS acc 333 t
DVHREQ2288I Your CMS request for DIRMAINT at * has been accepted.
DVHREQ2289I Your CMS request for DIRMAINT at * has completed; with RC
DVHREQ2289I = 0.
DIRMAINT TEC1ZVM. - 2008/03/01; T=0.02/0.02 18:08:22
DVHMAI2140I Waiting for work on 08/03/01 at 18:08:22.
cms q disk
DVHMAI2146I Wakeup caused by console attention on 08/03/01 at 18:08:31.
DIRMAINT TEC1ZVM. - 2008/03/01; T=0.01/0.01 18:08:31
DVHREQ2290I Request is: CMS q disk
DVHREQ2288I Your CMS request for DIRMAINT at * has been accepted.
LABEL VDEV M STAT CYL TYPE BLKSZ FILES BLKS USED-(%) BLKS LEFT BLK TOTA
DIR155 155 A R/W 9 3390 4096 11 78-05 1542 162
DRM491 191 C R/W 15 3390 4096 250 1311-49 1389 270
DRM11F 11F D R/W 8 3390 4096 47 568-39 872 144
DIR1DF 1DF E R/W 9 3390 4096 122 259-16 1361 162
DIR1DB 1DB G R/W 9 3390 4096 10 140-09 1480 162
DIR1AA 1AA H R/W 9 3390 4096 8 172-11 1448 162
MNT190 190 S R/W 100 3390 4096 687 14513-81 3487 1800
DIR333 333 T R/W 5 3390 4096 2 505-56 395 90
MNT19E 19E Y/S R/O 250 3390 4096 1100 28061-62 16939 4500
DIR1FA 1FA Z R/W 9 3390 4096 0 7-00 1613 162
DVHREQ2289I Your CMS request for DIRMAINT at * has completed; with RC
DVHREQ2289I = 0.
DIRMAINT TEC1ZVM. - 2008/03/01; T=0.02/0.02 18:08:32
DVHMAI2140I Waiting for work on 08/03/01 at 18:08:32.
CMS COPYFILE DIRMAINT TLOG0914 T = TLOG0912 H_
DIRMAINT (Scroll)
31/046
Connected to remote server/host 9.39.64.72 using port 23
    
```

Trigger Hourly Disk Check

```

Session A - TSTADMNI - [32 x 80]
File Edit View Communication Actions Window Help
DVHMAI2146I Wakeup caused by console attention on 08/03/01 at 18:11:20.
DIRMAINT TEC1ZVM. - 2008/03/01; T=0.01/0.01 18:11:20
DVHREQ2290I Request is: CMS q disk
DVHREQ2288I Your CMS request for DIRMAINT at * has been accepted.
LABEL VDEV M STAT CYL TYPE BLKSZ FILES BLKS USED-(%) BLKS LEFT BLK TOTA
DIR155 155 A R/W 9 3390 4096 11 78-05 1542 162
DRM491 191 C R/W 15 3390 4096 250 1311-49 1389 270
DRM11F 11F D R/W 8 3390 4096 47 568-39 872 144
DIR1DF 1DF E R/W 9 3390 4096 122 259-16 1361 162
DIR1DB 1DB G R/W 9 3390 4096 10 140-09 1480 162
DIR1AA 1AA H R/W 9 3390 4096 11 1367-84 253 162
MNT190 190 S R/W 100 3390 4096 687 14513-81 3487 1800
DIR333 333 T R/W 5 3390 4096 2 505-56 395 90
MNT19E 19E Y/S R/O 250 3390 4096 1100 28061-62 16939 4500
DIR1FA 1FA Z R/W 9 3390 4096 0 7-00 1613 162
DVHREQ2289I Your CMS request for DIRMAINT at * has completed; with RC
DVHREQ2289I = 0.
DIRMAINT TEC1ZVM. - 2008/03/01; T=0.02/0.03 18:11:21
DVHMAI2140I Waiting for work on 08/03/01 at 18:11:21.
cms exec dvhourly
DVHMAI2146I Wakeup caused by console attention on 08/03/01 at 18:14:09.
DIRMAINT TEC1ZVM. - 2008/03/01; T=0.01/0.01 18:14:09
DVHREQ2290I Request is: CMS exec dvhourly
DVHREQ2288I Your CMS request for DIRMAINT at * has been accepted.
DVHRLY3895W Disk 01AA is 84% full, exceeding its
DVHRLY3895W Disk 01AA is 84% full, exceeding its
EXEC DIRM1AA DIRMAINT
DIRM1AA - DIRMAINT log archive started ....
DIRM1AA - Issuing DIRM SHUTDOWN ....
DIRMAINT
31/001
Connected to remote server/host 9.39.64.72 using port 23
    
```

IBM Software

Files Sent to Archiving Server (ARCHLOGS)

```

Session A - TSTADMIN - [32 x 80]
File Edit View Communication Actions Window Help
File DIRMAINT TLOG0801 ZI sent to ARCHLOGS at TEC1ZVM on 03/01/08 18:14:14
ARCHLOGS: File DIRMAINT TLOG0801 DI created from DIRMAINT TLOG0801 ZI received
ARCHLOGS: File DIRMAINT TLOG0801 (spoolid 71) from OPMGRM1 successfully received
ARCHLOGS: ng disk.
ARCHLOGS: Calling Archive for DIRMAINT TLOG0801.
ARCHLOGS: AMVARC8031I *** Archive transaction has been submitted for processing
ARCHLOGS: AMVARC8031I ***
ARCHLOGS: AMVARC8031I *** IMPORTANT: Do not alter or delete objects selected f
ARCHLOGS: AMVARC8031I *** archive until you receive confirmation th
ARCHLOGS: AMVARC8031I *** the archive transaction has been successf
ARCHLOGS: AMVARC8031I *** processed.
ARCHLOGS: RDR FILE 0073 SENT FROM OPMGRM1 PUN HAS 0007 RECS 6025 CPY 001 A NO
File DIRMAINT TLOG0802 ZI sent to ARCHLOGS at TEC1ZVM on 03/01/08 18:14:14
ARCHLOGS: DMSCYW2245I *MSG AMVARKIV 03/01/08 18:14:16 Archive staging operation
ARCHLOGS: File DIRMAINT TLOG0801 successfully archived.
ARCHLOGS: DMSCYW2245I *MSG AMVARKIV 03/01/08 18:14:16 Your information is in pa
ARCHLOGS: RDR FILE 0074 SENT FROM OPMGRM1 PUN HAS 0008 RECS 020K CPY 001 A NO
File DIRMAINT TLOG0910 ZI sent to ARCHLOGS at TEC1ZVM on 03/01/08 18:14:14
ARCHLOGS: File DIRMAINT TLOG0802 DI created from DIRMAINT TLOG0802 ZI received
ARCHLOGS: File DIRMAINT TLOG0802 (spoolid 73) from OPMGRM1 successfully received
ARCHLOGS: ng disk
ARCHLOGS: Calling Archive for DIRMAINT TLOG0802.
ARCHLOGS: AMVARC8031I *** Archive transaction has been submitted for processing
ARCHLOGS: AMVARC8031I ***
ARCHLOGS: AMVARC8031I *** IMPORTANT: Do not alter or delete objects selected f
ARCHLOGS: AMVARC8031I *** archive until you receive confirmation th
ARCHLOGS: AMVARC8031I *** the archive transaction has been successf
ARCHLOGS: AMVARC8031I *** processed.
ARCHLOGS: AMVARC8031I ***
ARCHLOGS: DMSCYW2245I *MSG AMVARKIV 03/01/08 18:14:18 Archive staging operation
ARCHLOGS: DMSCYW2245I *MSG AMVARKIV 03/01/08 18:14:18 Your information is in pa
-
DIRMAINT
31 / 001
Connected to remote server/host: 9.39.64.72 using port 23

```

29 Integrating IBM's Solutions, System and Performance Management of z/VM and Linux on System z © 2008 IBM Corporation

IBM Software

Observe DIRMAINT Restarting

```

Session A - TSTADMIN - [32 x 80]
File Edit View Communication Actions Window Help
PRODUCT:
IBM Directory Maintenance Facility for z/VM (DirMaint)
5739-A05 (C) Copyright IBM Corporation 1979, 2004.
Function Level 510 Service Level 0401.
DMSACC724I 155 replaces A (191)
HCPMF3057I MAINT not receiving; disconnected
HCPMF3057I OPERATOR not receiving; disconnected
HCPMF3057I MAINT not receiving; disconnected
HCPMF3057I OPERATOR not receiving; disconnected
DVHPR02010I TESTING USE OF MSGNOH ...
DASD 0192 DETACHED
DASD 021F DETACHED
.....
DIRMAINT TEC1ZVM. - 2008/03/01; T=0.02/0.03 18:14:21
DIRMAINT TEC1ZVM. - 2008/03/01; T=0.09/0.11 18:14:23
DVHWA12140I Waiting for work on 08/03/01 at 18:14:23.
.....
DVHWA12146I Wakeup caused by console attention on 08/03/01 at 18:14:29.
DIRMAINT TEC1ZVM. - 2008/03/01; T=0.01/0.01 18:14:29
DVHRE02290I Request is: CMS exec dvhourly
DVHRE02288I Your CMS request for DIRMAINT at * has been accepted.
DVHRLY3886I Hourly processing started; with 0 log
DVHRLY3886I files.
DVHRE02289I Your CMS request for DIRMAINT at * has completed; with RC
DVHRE02289I = 0.
DIRMAINT TEC1ZVM. - 2008/03/01; T=0.03/0.03 18:14:30
DVHWA12140I Waiting for work on 08/03/01 at 18:14:30.
-
DIRMAINT
31 / 001
Connected to remote server/host: 9.39.64.72 using port 23

```

30 Integrating IBM's Solutions, System and Performance Management of z/VM and Linux on System z © 2008 IBM Corporation

Verify Logging Disk is No Longer Full

```

Session A - TSTADMINI - [32 x 80]
File Edit View Communication Actions Window Help
cms exec dvhourly
DVHMAI2146I Wakeup caused by console attention on 08/03/01 at 18:14:29.
DIRMAINT TEC1ZVM. - 2008/03/01; T=0.01/0.01 18:14:29
DVHRE02290I Request is: CMS exec dvhourly
DVHRE02288I Your CMS request for DIRMAINT at * has been accepted.
DVHRLY3886I Hourly processing started; with 0 log
DVHRLY3886I files.
DVHRE02289I Your CMS request for DIRMAINT at * has completed; with RC
DVHRE02289I = 0.
DIRMAINT TEC1ZVM. - 2008/03/01; T=0.03/0.03 18:14:30
DVHMAI2140I Waiting for work on 08/03/01 at 18:14:30

cms q disk
DVHMAI2146I Wakeup caused by console attention on 08/03/01 at 18:19:21.
DIRMAINT TEC1ZVM. - 2008/03/01; T=0.01/0.01 18:19:21
DVHRE02290I Request is: CMS q disk
DVHRE02288I Your CMS request for DIRMAINT at * has been accepted.
LABEL VDEV M STAT CYL TYPE BLKSZ FILES BLKS USED-(%) BLKS LEFT BLK TOTA
DIR155 155 A R/W 9 3390 4096 11 78-05 1542 162
DRM491 191 C R/W 15 3390 4096 250 1311-49 1389 270
DRM11F 11F D R/W 8 3390 4096 47 568-39 872 144
DIR1DF 1DF E R/W 9 3390 4096 122 259-16 1361 162
DIR1DB 1DB G R/W 9 3390 4096 10 140-09 1480 162
DIR1A 1A H R/W 9 3390 4096 7 14-01 1606 162
MNT190 190 S R/O 100 3390 4096 687 14513-81 3487 1800
MNT19E 19E W/S R/O 250 3390 4096 1100 28061-62 16939 4500
DIR1FA 1FA Z R/W 9 3390 4096 0 7-00 1613 162
DVHRE02289I Your CMS request for DIRMAINT at * has completed; with RC
DVHRE02289I = 0.
DIRMAINT TEC1ZVM. - 2008/03/01; T=0.02/0.03 18:19:22
DVHMAI2140I Waiting for work on 08/03/01 at 18:19:22.
DIRMAINT (Scroll)
31/001
Connected to remote server/host 9.39.64.72 using port 23
    
```

View DIRMAINT Logs in Archive Manager

```

Session A - TSTADMINI - [32 x 80]
File Edit View Communication Actions Window Help
Files for owner(s): *
Selection: Name: * Type: * Mode: * 36 of 36 shown
Current filters: Name: * Type: * Mode: * Owner: *
Owner Filename Filetype Fm Date Time Device or Path
ARCHLOGS DIRMAINT TRANSLOG 1 08/03/01 18:14:12 192
ARCHLOGS DIRMAINT TLOG0910 1 08/03/01 18:11:14 192
ARCHLOGS DIRMAINT TLOG0911 1 08/03/01 18:10:55 192
ARCHLOGS DIRMAINT TLOG0912 1 08/03/01 18:10:50 192
ARCHLOGS DIRMAINT TLOG0802 1 08/03/01 00:01:06 192
ARCHLOGS DIRMAINT TLOG0801 1 08/02/23 00:01:07 192
ARCHLOGS DIRMAINT TRANSLOG 1 08/02/22 17:55:55 192
ARCHLOGS DIRMAINT TLOG0913 1 08/02/22 17:54:52 192
ARCHLOGS DIRMAINT TLOG0912 1 08/02/22 17:54:46 192
ARCHLOGS DIRMAINT TLOG0801 1 08/02/01 00:01:06 192
ARCHLOGS DIRMAINT TLOG0712 1 08/01/31 00:01:06 192
ARCHLOGS DIRMAINT TRANSLOG 1 08/01/30 17:46:06 192
ARCHLOGS DIRMAINT TLOG0914 1 08/01/30 17:45:24 192
ARCHLOGS DIRMAINT TLOG0913 1 08/01/30 17:45:18 192
ARCHLOGS DIRMAINT TLOG0912 1 08/01/30 17:45:12 192
ARCHLOGS DIRMAINT TLOG0712 1 08/01/26 00:01:06 192
ARCHLOGS DIRMAINT TRANSLOG 1 08/01/25 21:08:07 192
ARCHLOGS DIRMAINT TLOG0911 1 08/01/25 21:07:29 192
ARCHLOGS DIRMAINT TLOG0913 1 08/01/25 21:07:06 192
ARCHLOGS DIRMAINT TLOG0912 1 08/01/25 21:06:55 192
ARCHLOGS DIRMAINT TLOG0712 1 08/01/06 00:01:08 192
ARCHLOGS DIRMAINT TLOG0712 1 08/01/06 00:01:08 192
ARCHLOGS DIRMAINT TLOG0911 1 07/05/17 00:07:55 192
1= Help 3= Quit 4= Return 5= Sort Up
6= Sort Down 7= Backward 8= Forward 10= Recall 11= Details
09/033
Connected to remote server/host 9.39.64.72 using port 23
    
```


Summary

- **IBM solutions exist for customers running z/VM and Linux guests**
 - OMEGAMON XE on z/VM and Linux
 - Operations Manager for z/VM
 - Tape Manager for z/VM
 - Backup and Restore Manager for z/VM
 - Archive Manager for z/VM
- **Integrating these solutions can help**
 - Automate daily tasks
 - Deal with predictable situations automatically
 - Schedule events