

IBM Update: VSE

2002 WAVV Conference and EXPO

April 12-16, 2002

Ft Mitchell, KY

G. M. (Jerry) Johnston
Senior Advisor
IBM Böblingen Laboratory
p798000@us.ibm.com

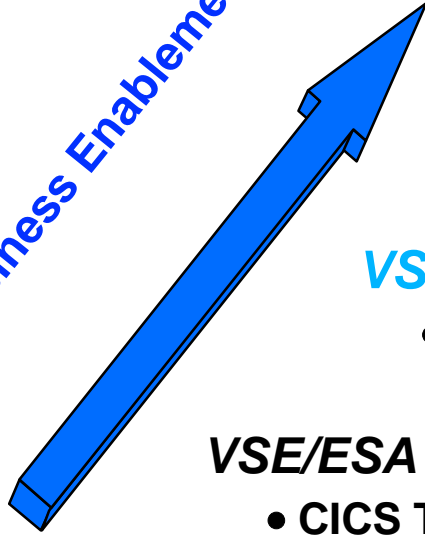


IBM @server. For the next generation of e-business.

VSE Directions

IBM @server

hybrid e-business Enablement



VSE/ESA V2.7 Preview

- more Linux Interoperability

VSE/ESA V2.6 Dec 2001

- Enhanced Interoperability

VSE/ESA V2.5 Sept 2000

- CICS Transaction Server for VSE/ESA
- *e-business connectors*



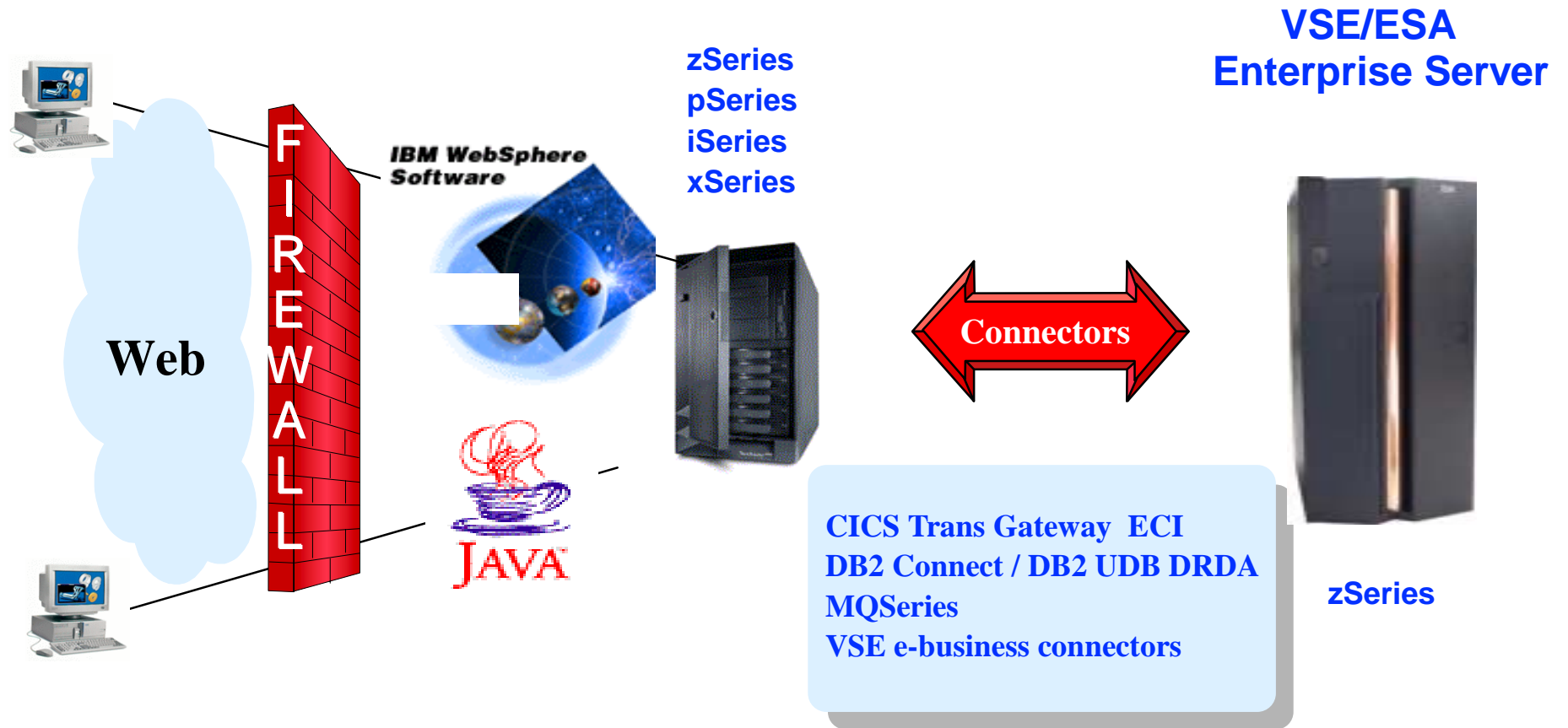
Protect your existing core VSE investments - emphasize open, hybrid e-business solutions (especially leveraging Linux on zSeries) for many newer workloads.



IBM @server. For the next generation of e-business.

Hybrid (3-tier) e-business Model

IBM @server



Client

Business Services

Tran/Data Services

IBM @server. For the next generation of e-business.

VSE/ESA Version 2 Release 6 - GA 12/2001

IBM 

Secure Sockets Layer (SSL) added to TCP/IP for VSE/ESA

- native implementation
- including DES, triple DES, authentication using digital certificates
- secure connections to CICS using CWS

Currency of Existing Connectors (VSE as enterprise server)

- update to J2EE ('JAVA2' or JDK1.2/1.3) standard

New Connector (VSE as client)

- VSE/VSAM redirector

TCP/IP support for CICS External Call Interface (ECI)

- used by CICS Transaction Gateway connector
- VSE <=> Linux

Hardware

- OSA Express (Gigabit ethernet, token ring)
- FICON
- VSAM support for large 3390-9 DASD

 For the next generation of e-business.

VSE/VSAM Redirector

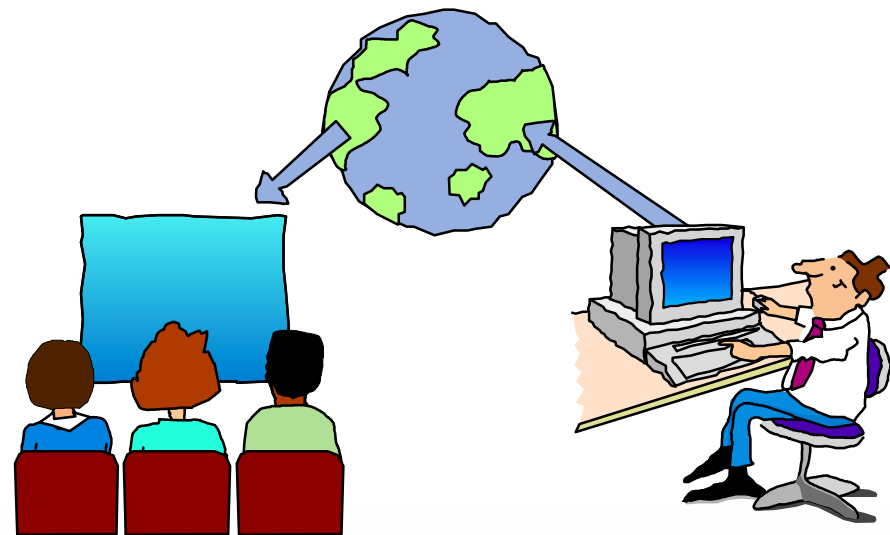
IBM @server

VSAM Redirector Client (runs on VSE)

- based on generic VSAM exit
- transparent (no changes) to VSE application
- intercepts VSAM request and routes to Redirector Server

VSAM Redirector Server (runs on any Java Platform)

- implemented in Java
- fields request from VSE client
- calls file-specific handler
- returns result to VSE



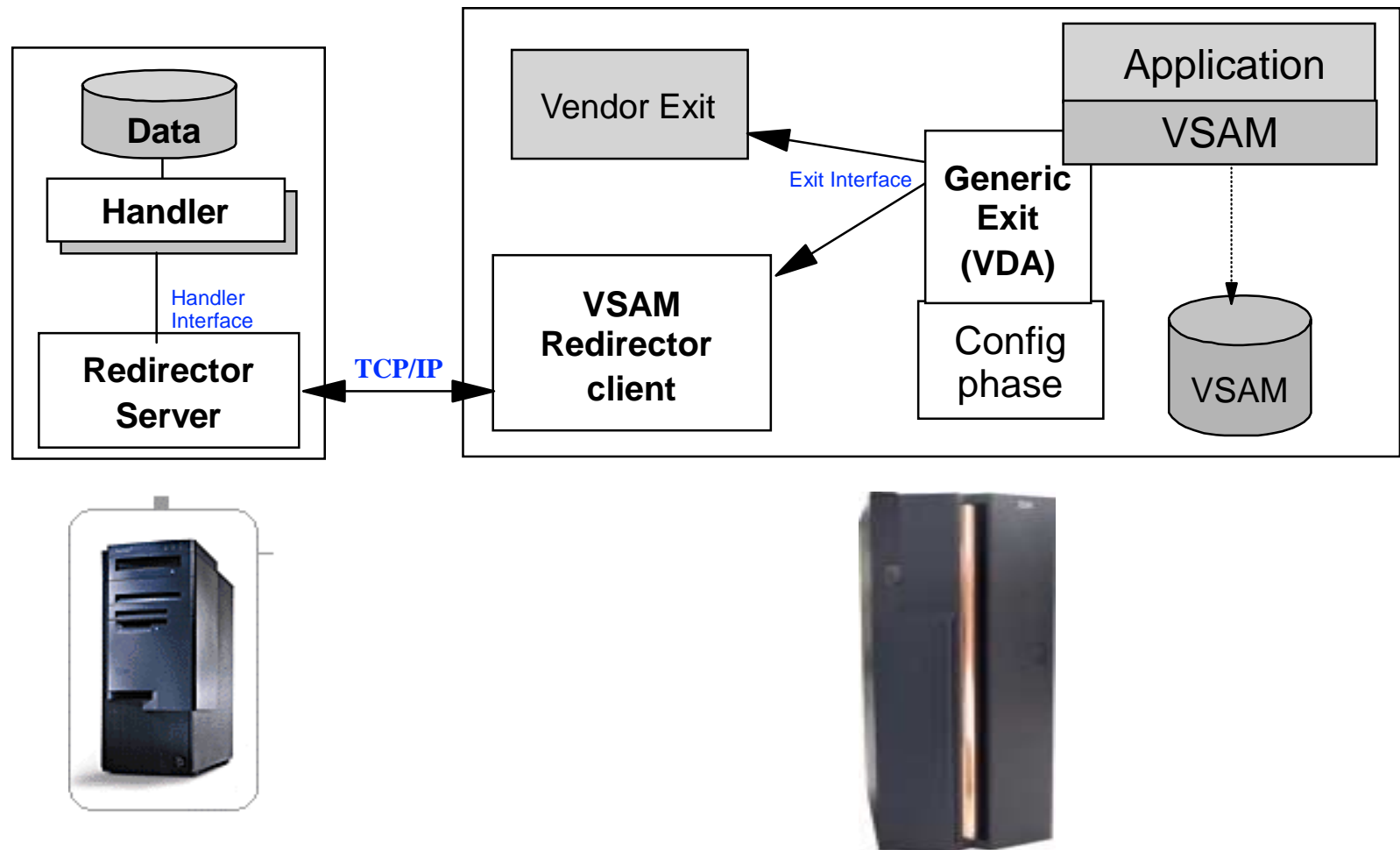
IBM @server. For the next generation of e-business.

Tuesday 8:00 am, *New V2.6 Functions - Mild*

IBM @server

Java Platform

VSE/ESA V2.6



IBM @server. For the next generation of e-business.

VSE/ESA Version 2 Release 7 Preview



IBM @server

Hardware

- HiperSockets (for *very fast* memory-to-memory communication)
 - VSE interoperability with Linux on zSeries
- PCICA hardware encryption assist
 - enhances SSL
- Support limited to
 - zSeries 900 and **zSeries 800** in 31-bit mode
 - S/390 G5/G6
 - S/390 Multiprise 3000
 - equivalent

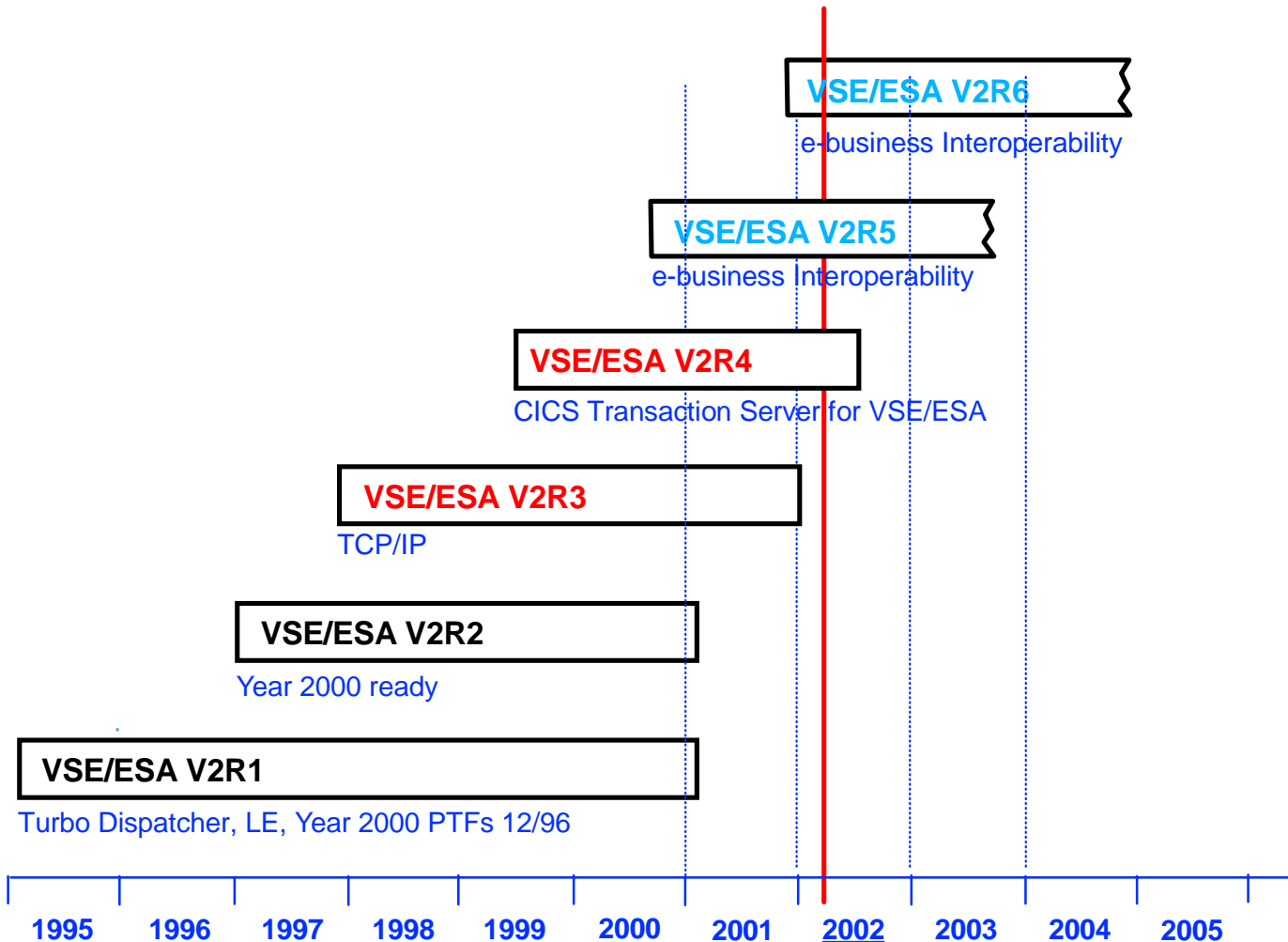


IBM @server. For the next generation of e-business.

VSE/ESA Version 2 Support

IBM @server

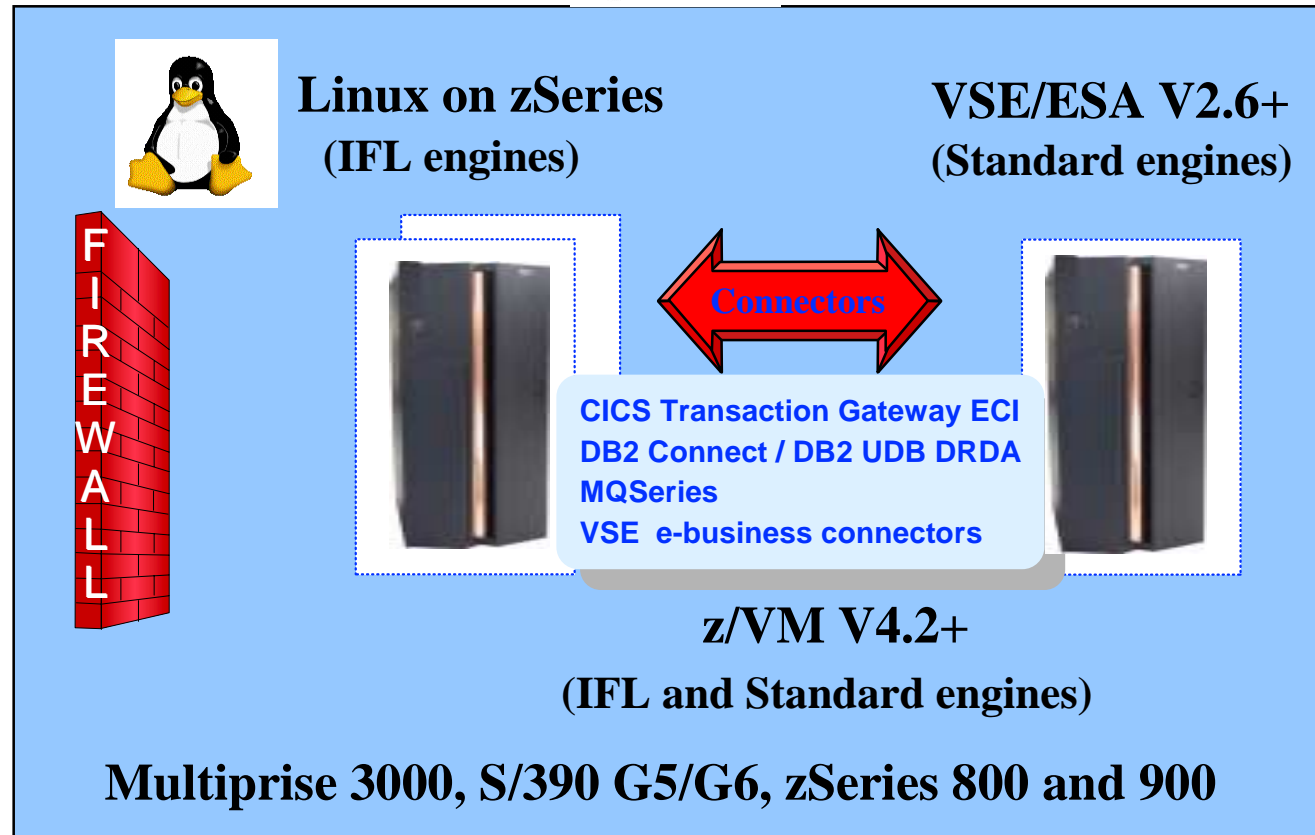
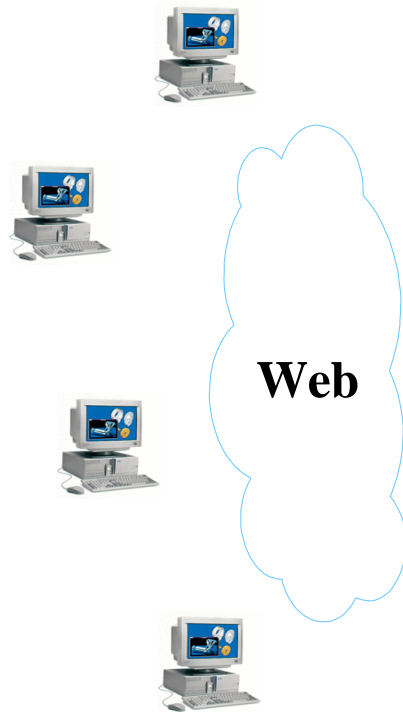
VSE/ESA V2R7



IBM @server. For the next generation of e-business.

A Vision for Modern VSE Solutions

IBM @server



Clients

Business Services

Tran/Data Services

IBM @server. For the next generation of e-business.

Recommended Sessions

IBM @server

Overall VSE Strategy

- Saturday 1:45 pm, *VSE 'Plays Well With Others'* - Jerry Johnston

VSE/ESA V2.6

- Saturday 1:45 pm, *CICS TS VSE/ESA* - Chris Smith
- Saturday 3:00 pm, *VSE Connectors* - Wilhelm Mild
- Saturday 5:30 pm, *V2.6 Update* - Ingolf Salm
- Sunday 5:30 pm, *SSL for TCP/IP* - Don Stoeber
- Monday 3:00 pm, *WebSphere Appl Server* - Ingolf Salm
- Tuesday 8:00 am, *New V2.6 Functions* - Wilhelm Mild / Ingo Franzki



Linux on zSeries

- Saturday 11:45 am, *Linux on zSeries* - Dr. Klaus Goebel
- Saturday 4:15 pm, *User Experience* - Rich Smrcina / Jeff Barnard
- Tuesday 9:15 am, *Exploiting Linux on zSeries* - Wilhelm Mild

z/VM V4.2 or later

- Saturday 3:00 pm, *z/VM Update* - Jim Fields

IBM @server. For the next generation of e-business.

z/VM, VSE and Linux on zSeries Tech Conf

IBM @server

October 7 - 10, 2002

Miami Beach, FL

Fontainebleau Hotel and Resort (main conference)

Note: Will be held at the same time, in the same location as the z/OS and OS/390 EXPO

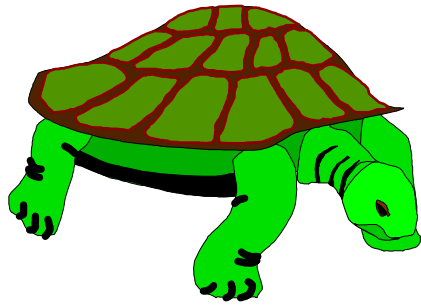
The two conferences will share an EXPO area, meals, some common tracks and an evening event



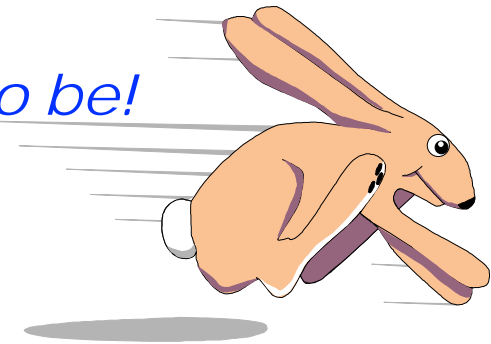
IBM @server. For the next generation of e-business.

Conclusion

IBM @server



After more than 35 Years
Providing Cost/Effective
Solutions to IBM Customers the
World Over, VSE Doesn't Get
Older - It Gets Better. *Now,
because VSE plays well with
others, you can be as
competitive as you want to be!*



IBM @server. For the next generation of e-business.