

VSE/ESA

Navigator



Wilhelm Mild

VSE/ESA Design and Development

@-business ambassador

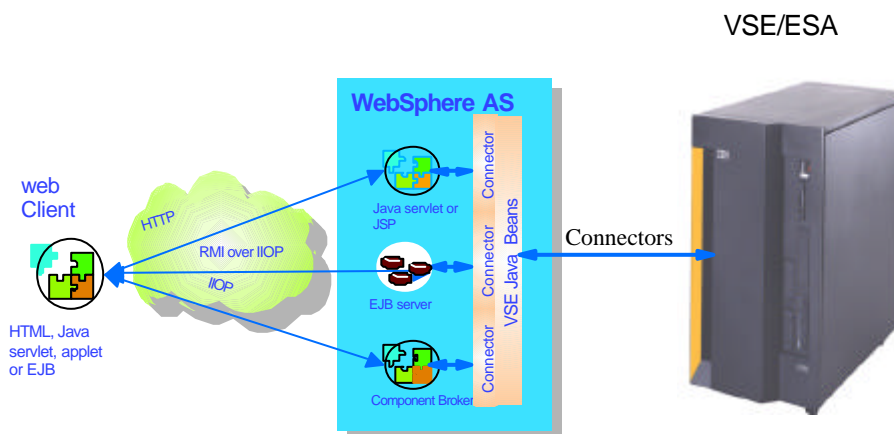
IBM Boeblingen Laboratory



IBM @business servers. Technology. Innovation. Magic.



VSE/ESA Java-Based Connectors

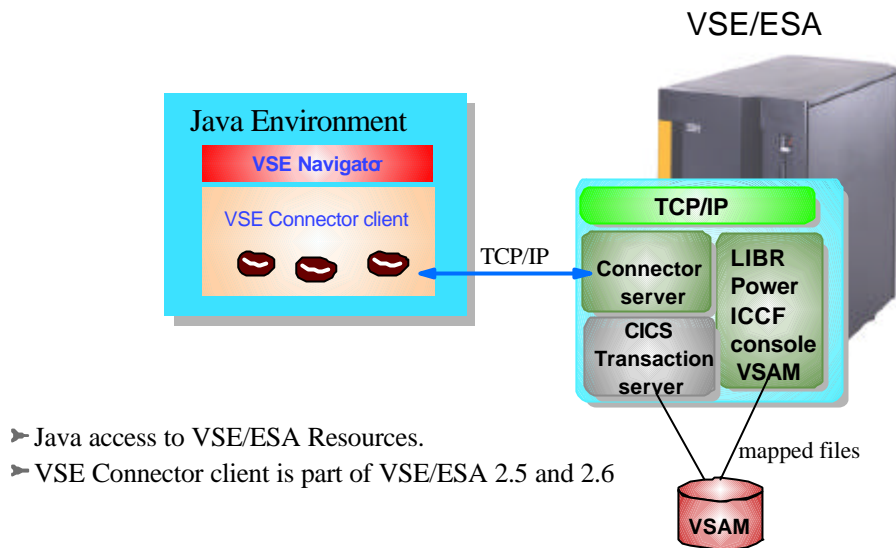


- ▶ Java access to VSE/ESA Resources.
- ▶ New possibilities for VSE/ESA.
- ▶ VSE/ESA Java beans are packaged in VSE/ESA 2.6 Connector client

IBM @server. For the next generation of e-business.



Navigator uses VSE Connector client

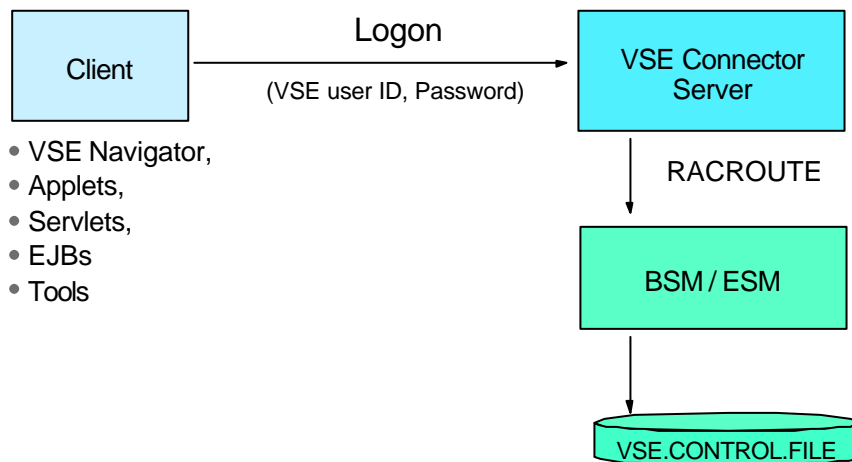


IBM @server. For the next generation of e-business.



VSE Connector Server

Logon-mechanism



IBM @server. For the next generation of e-business.



VSE Connector Server Configuration

Logon Security

Include and exclude list for userids
and IP addresses:

- Server configuration member SKVCSUSR
- Job-Skeleton in ICCF Lib.59

```
IP = 9.164.123.456, LOGON = DENIED
IP = 9.165.*      , LOGON = DENIED
IP = 10.0.0.*    , LOGON = ALLOWED
```

```
USER = SYS*,      LOGON = ALLOWED
USER = PROG,      LOGON = DENIED
```

IBM @server. For the next generation of e-business.



VSE Connector Server Configuration

SSL Security

Include and exclude list for userids
and IP addresses:

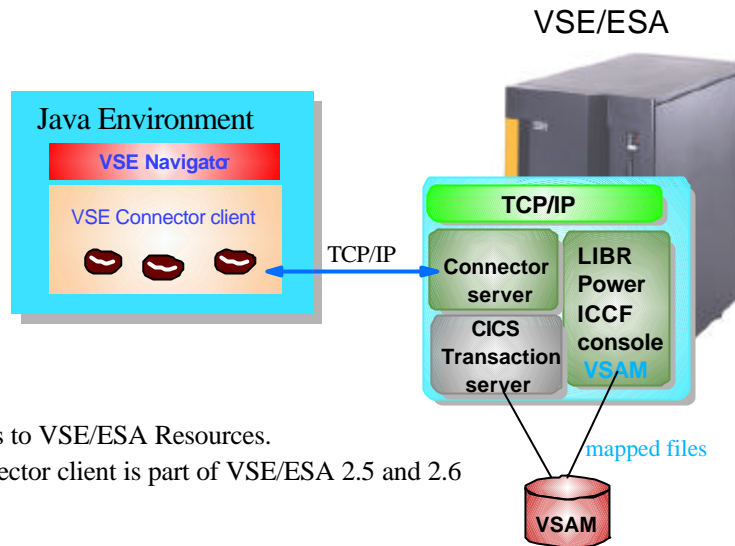
- Server configuration member SKVCSSSL
- Job-Skeleton in ICCF Lib.59

```
*****
;
;   SSL CONFIGURATION MEMBER FOR VSE CONNECTOR SERVER
;
*****
;
; *****
; SSLVERSION  SPECIFIES THE MINIMUM VERSION THAT IS TO BE USED
;             POSSIBLE VALUES ARE:  SSL30 AND TLS31
; *****
SSLVERSION = SSL30
;
; *****
; CIPHERSUITES SPECIFIES A LIST OF CIPHER SUITES THAT ARE ALLOWED
; *****
CIPHERSUITES =      ; COMMA SEPARATED LIST OF NUMERIC VALUES
01, ; RSA512_NULL_MD5
02, ; RSA512_NULL_SHA
08, ; RSA512_DES40CBC_SHA
09, ; RSA1024_DESCBC_SHA
0A, ; RSA1024_3DESCBC_SHA
62, ; RSA1024_EXPORT_DESCBC_SHA
```

IBM @server. For the next generation of e-business.



Navigator uses VSE Connector client



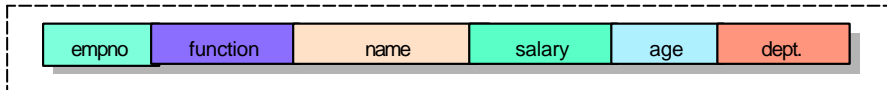
- Java access to VSE/ESA Resources.
- VSE Connector client is part of VSE/ESA 2.5 and 2.6

IBM @server. For the next generation of e-business.



VSAM data in a relational View

VSE/VSAM Record structure from EMPPROG.COBOL



MY.USER.CATALOG / MY.VSAM.CLUSTER / EMPTABLE

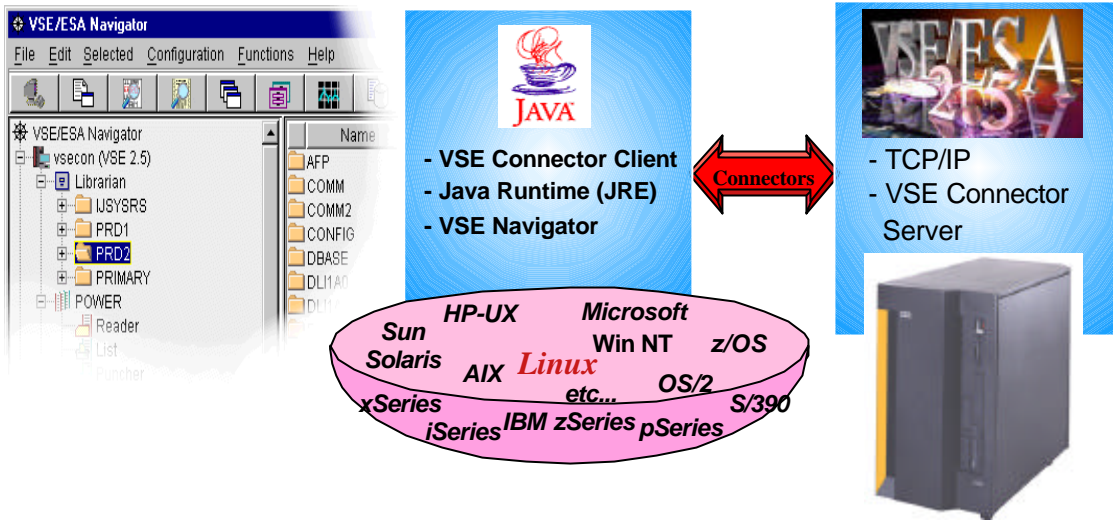
empid	function	full_name	salary	age	dept.
4711	Manager	Mike Jonathan	8000 \$	42	1234
4712	Programmer	Jane Smith	6500 \$	35	1234
4713	Designer	Steve Miller	7000 \$	34	5678
4714	Secretary	Charly Brown	3500 \$	28	7256

- **Mapping can be done via:**
- **IDCAMS Utility RECMAP**
- **Java Beans (function included in VSE Navigator)**
- **MapTool to Generate/Transfer Maps and to generate XML format**

IBM @server. For the next generation of e-business.



VSE Navigator (100% pure Java application)



☛ A VSE/ESA graphical user interface using the Java-Based Connectors
(can be downloaded for free from VSE/ESA home page)

IBM @server. For the next generation of e-business.



VSE Navigator - Major Functions

- ★ **Monitoring**
 - ★ **VSAM Space**
 - ★ monitor VSAM Space
 - ★ react on VSAM space shortage automatically with a local command (i.e. generate e-mail) or automatically release a JOB on VSE
 - ★ **System activity**
 - ★ supervise the partitions of your choice and save output to spreadsheet
 - ★ analyse with PC tools the system activity
 - ★ **partition balancing**

IBM @server. For the next generation of e-business.



VSE Navigator - Major Functions

★ Data access

★ Librarian

- ★ Define/ delete sublibraries and members
- ★ Edit members with the editor of your choice
- ★ Copy Library members
- ★ Copy & Paste PC files to VSE Libraries
- ★ Copy and Paste members between VSE systems

★ Power Queues

- ★ Creation and Job submission
- ★ display contents of List/Punch queue entries
- ★ Edit/Release Reader Queue entries
- ★ View In Creation Queue entries
- ★ display ICCF Library members

IBM @server. For the next generation of e-business.



VSE Navigator - Major Functions

★ Data access (continued)

★ VSAM

- ★ define VSAM files
- ★ define/modify MAPS/VIEWS for VSAM files
- ★ display contents VSAM records
- ★ add VSAM records using a map
- ★ update/modify VSAM data
- ★ Copy VSAM files (Repro) on same system
- ★ Backup/Restore VSAM files

IBM @server. For the next generation of e-business.



VSE Navigator Functions

System Global Functions

- ★ **Configure TCP/IP**
- ★ **Search tool for VSE**
- ★ **Retrace Products**
- ★ **Display SVA utilization**
- ★ **Display Hardware Configuration**
- ★ **Console access**
- ★ **Message communication between Navigator users**
- ★ **Includes all local and Network drives**

IBM @server. For the next generation of e-business.



VSE Navigator Functions

- ★ **These functions are available via the VSE e-business Connectors and can be included separately in java programs (applets,servlets,EJB's) to be integrated in solutions, based on the WebSphere Application Server.**

IBM @server. For the next generation of e-business.



Steps for installation

- ✓ install Java Runtime Environment (JRE) or
- ✓ Java Developer Kit (JDK)
 - ✓ free download from SUN or IBM
 - ✓ version 1.3.x
 - <http://www.ibm.com/java/jdk/download/index.html>

- ✓ download VSE Connector client
- <http://www-1.ibm.com/servers/eserver/zseries/os/vse/support/vseconn/vse26/vsecon.htm>

- ✓ install VSE Connector client
 - ✓ at a command prompt hit: `java install`

- ✓ download VSE Navigator
- <http://www-1.ibm.com/servers/eserver/zseries/os/vse/support/vseconn/vse26/vsenavi.htm>
- ✓ install VSE Navigator
 - ✓ at a command prompt hit: `java install`

IBM @server. For the next generation of e-business.



Setup VSE connector server

Setup correct TCP/IP ID for VSE Connector server on VSE/ESA

- ✓ TCP/IP for VSE/ESA has been started with a **system ID** (default is **00**) specification in TCP/IP startup Job:


```
// EXEC IPNET,SIZE=IPNET,PARM='ID=00',INIT=.....
```

- ✓ To use the TCP/IP services from another partition this partition has to 'know' the system ID. This is specified as follows:


```
// OPTION SYSPARM='m' - where nn is the system ID.
```

- ★ Recommendation: use the skeleton SKVCSSTJ in ICCF lib 59 to add this statement to startup job of connector server:

- ✓ Start connector server

```
r rdr,STARTVCS
```

IBM @server. For the next generation of e-business.



Start and customize Navigator

- ✓ Start Navigator ([run.bat](#) or [run.sh](#))
 - First start will guide you through the settings:
 - ✓ Look and feel
 - ✓ Local directories
 - ✓ Local applications (i.e. Browser, file compare tool)

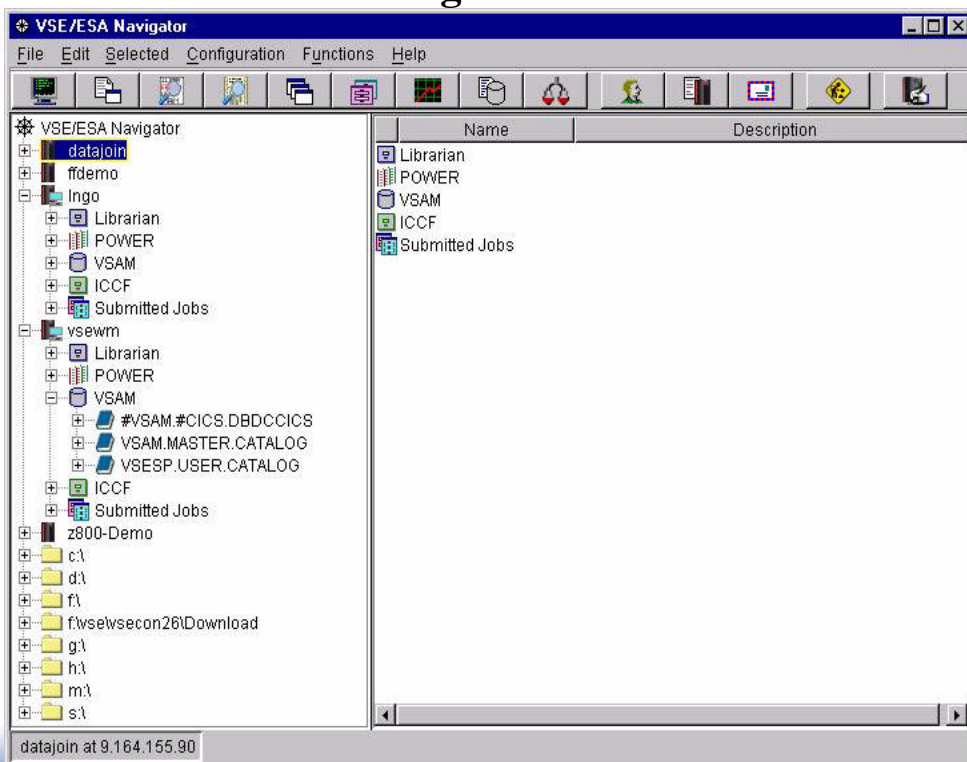
- ✓ setup a host system
 - [Configuration -> Hosts](#)

- ✓ Change the Configuration of Connector server
 - [Functions -> Display Server Status](#)
- ✓ View Change the configuration files for:
 - ✓ Server
 - ✓ Librarian
 - ✓ Users
 - ✓ Plugins
 - ✓ SSL

IBM @server. For the next generation of e-business.



Main Navigator Window





Additional Information

- ✦ VSE/ESA Home Page
<http://www.ibm.com/servers/eserver/zseries/os/vse/>
- ✦ e-business for VSE/ESA customers
<http://www.ibm.com/servers/eserver/zseries/os/vse/ebus/home.html>
- ✦ e-business Connectors User's Guide SC33-6719
- Redbooks:
- ✦ e-business Connectivity for VSE/ESA SG24-5950
- ✦ e-business Solutions for VSE/ESA SG24-5662
- ✦ Servlet and JSP Programming SG24-5755

We appreciate your comments at :
VSEESA@de.ibm.com



IBM @server. For the next generation of e-business.