

# z/VSE Wellness

How to keep your z/VSE in good shape

Ingo Franzki, IBM



## Trademarks

**The following are trademarks of the International Business Machines Corporation in the United States, other countries, or both.**

Not all common law marks used by IBM are listed on this page. Failure of a mark to appear does not mean that IBM does not use the mark nor does it mean that the product is not actively marketed or is not significant within its relevant market.

Those trademarks followed by ® are registered trademarks of IBM in the United States; all others are trademarks or common law marks of IBM in the United States.

For a complete list of IBM Trademarks, see [www.ibm.com/legal/copytrade.shtml](http://www.ibm.com/legal/copytrade.shtml):

\*, AS/400®, e business(logo)®, DBE, ESCO, eServer, FICON, IBM®, IBM (logo)®, iSeries®, MVS, OS/390®, pSeries®, RS/6000®, S/30, VM/ESA®, VSE/ESA, WebSphere®, xSeries®, z/OS®, zSeries®, z/VM®, System i, System i5, System p, System p5, System x, System z, System z9®, BladeCenter®

**The following are trademarks or registered trademarks of other companies.**

Adobe, the Adobe logo, PostScript, and the PostScript logo are either registered trademarks or trademarks of Adobe Systems Incorporated in the United States, and/or other countries.

Cell Broadband Engine is a trademark of Sony Computer Entertainment, Inc. in the United States, other countries, or both and is used under license therefrom.

Java and all Java-based trademarks are trademarks of Sun Microsystems, Inc. in the United States, other countries, or both.

Microsoft, Windows, Windows NT, and the Windows logo are trademarks of Microsoft Corporation in the United States, other countries, or both.

Intel, Intel logo, Intel Inside, Intel Inside logo, Intel Centrino, Intel Centrino logo, Celeron, Intel Xeon, Intel SpeedStep, Itanium, and Pentium are trademarks or registered trademarks of Intel Corporation or its subsidiaries in the United States and other countries.

UNIX is a registered trademark of The Open Group in the United States and other countries.

Linux is a registered trademark of Linus Torvalds in the United States, other countries, or both.

ITIL is a registered trademark, and a registered community trademark of the Office of Government Commerce, and is registered in the U.S. Patent and Trademark Office.

IT Infrastructure Library is a registered trademark of the Central Computer and Telecommunications Agency, which is now part of the Office of Government Commerce.

\* All other products may be trademarks or registered trademarks of their respective companies.

### Notes:

Performance is in Internal Throughput Rate (ITR) ratio based on measurements and projections using standard IBM benchmarks in a controlled environment. The actual throughput that any user will experience will vary depending upon considerations such as the amount of multiprogramming in the user's job stream, the I/O configuration, the storage configuration, and the workload processed. Therefore, no assurance can be given that an individual user will achieve throughput improvements equivalent to the performance ratios stated here.

IBM hardware products are manufactured from new parts, or new and serviceable used parts. Regardless, our warranty terms apply.

All customer examples cited or described in this presentation are presented as illustrations of the manner in which some customers have used IBM products and the results they may have achieved. Actual environmental costs and performance characteristics will vary depending on individual customer configurations and conditions.

This publication was produced in the United States. IBM may not offer the products, services or features discussed in this document in other countries, and the information may be subject to change without notice. Consult your local IBM business contact for information on the product or services available in your area.

All statements regarding IBM's future direction and intent are subject to change or withdrawal without notice, and represent goals and objectives only.

Information about non-IBM products is obtained from the manufacturers of those products or their published announcements. IBM has not tested those products and cannot confirm the performance, compatibility, or any other claims related to non-IBM products. Questions on the capabilities of non-IBM products should be addressed to the suppliers of those products.

Prices subject to change without notice. Contact your IBM representative or Business Partner for the most current pricing in your geography.

## Notice Regarding Specialty Engines (e.g., zIIPs, zAAPs and IFLs):

- Any information contained in this document regarding Specialty Engines ("SEs") and SE eligible workloads provides only general descriptions of the types and portions of workloads that are eligible for execution on Specialty Engines (e.g., zIIPs, zAAPs, and IFLs). IBM authorizes customers to use IBM SE only to execute the processing of Eligible Workloads of specific Programs expressly authorized by IBM as specified in the "Authorized Use Table for IBM Machines" provided at [http://www.ibm.com/systems/support/machine\\_warranties/machine\\_code/aut.html](http://www.ibm.com/systems/support/machine_warranties/machine_code/aut.html) ("AUT").
- No other workload processing is authorized for execution on an SE.
- IBM offers SEs at a lower price than General Processors/Central Processors because customers are authorized to use SEs only to process certain types and/or amounts of workloads as specified by IBM in the AUT.

## z/VSE & z/VM Release Status

→z/VSE: <http://www.ibm.com/systems/z/os/zvse/about/status.html#vse>

Supported z/VSE releases				
Version.Release	Date available	Withdrawal from Marketing effective (1)	Withdrawal from Service effective	Minimum z/VM level (2)
→ <a href="#">z/VSE V6.1</a>	11/27/2015 <a href="#">Announcement</a>	TBD	TBD	z/VM V5.4
→ <a href="#">z/VSE V5.2</a>	04/25/2014 <a href="#">Announcement</a>	<a href="#">03/13/2017 Announcement</a>	TBD	z/VM V5.4
→ <a href="#">z/VSE V5.1</a>	11/25/2011 <a href="#">Announcement</a>	<a href="#">05/23/2014 Announcement</a>	<a href="#">06/30/2016 Announcement</a>	z/VM V5.4



Service extension contracts are available on request

**Note:** z/VSE V6.1 requires an initial installation. To ease the migration to z/VSE V6.1, z/VSE V5.2 will still be orderable after general availability of z/VSE V6.1 for a transition period.

→z/VM: <http://www.vm.ibm.com/techinfo/lpmigr/vmleos.html>

VM End of Service Effective Dates (mm/dd/yyyy)				
z/VM Product	Release	EOS (mm/dd/yyyy)	GA Date	EOS Announced (mm/yyyy)
z/VM (5741-A07)	V6.3.0	12/31/2017	07/26/2013	02/03/2015
z/VM (5741-A07)	V6.2.0	06/30/2017	12/02/2011	Revised on February 2, 2016
z/VM (5741-A05)	V5.4.0	<a href="#">12/31/2016, or until the z9 EC and z9 BC are withdrawn from support, whichever is later.</a>	09/12/2008	Revised on August 5, 2014. (Prior to this announcement EOS was 12/31/2014)



# z/VSE Server Support

→ <http://www.ibm.com/systems/z/os/zvse/about/status.html#server>

z/VSE server support			
IBM z Systems, IBM System z, zSeries and S/390 Server	z/VSE V6.1	z/VSE V5.2	z/VSE V5.1
IBM z13s (1,4)	Yes	Yes	Yes
IBM z13 (1,4)	Yes	Yes	Yes
IBM zEnterprise BC12 (1)	Yes	Yes	Yes
IBM zEnterprise EC12 (1)	Yes	Yes	Yes
IBM zEnterprise 114	Yes	Yes	Yes
IBM zEnterprise 196	Yes	Yes	Yes
IBM zEnterprise BladeCenter Extension (zBX) - IEDN Support	Yes (2,3)	Yes (2,3)	Yes (2,3)
IBM System z10 BC	Yes	Yes	Yes
IBM System z10 EC	Yes	Yes	Yes
IBM System z9 EC (formerly z9-109)	No	Yes	Yes
IBM System z9 BC	No	Yes	Yes
zSeries 990, 890	No	No	No
zSeries 900, 800	No	No	No
S/390 Parallel Enterprise Server G5/G6	No	No	No
S/390 Multiprise 3000	No	No	No

For older and unsupported release, please see here:  
<http://www.ibm.com/systems/z/os/zvse/about/statusold.html#server>

**Note (1):** The z13s, z13, zEC12 and zBC12 allow to configure OSA-Express4S and later with **OSA/SF in HMC**. Starting with the zEC12, ESCON channels are no longer supported.

**Note (2):** z/VSE V6.1, V5.1 and V5.2 can participate in an IEDN through OSA-Express for zBX devices (LPAR or z/VM guests).

**Note (3):** z/VSE V6.1, V5.1 and V5.2 can transparently participate in an IEDN through a z/VM VSWITCH. This requires z/VM V6.1 or later.

**Note (4):** The Crypto Express5s is the only crypto adapter that can be used on a z13 or z13s.

**Note:** Before migrating your z/VSE system to a newer server, please order the corresponding [PSP bucket](#).

**Note:** Server names shown in red are no longer supported by IBM, or a end of support date has been announced.



# z/VSE Storage Support



→ <http://www.ibm.com/systems/z/os/zvse/about/status.html#storage>

z/VSE storage support				
IBM Disk Storage Systems	Attachment	z/VSE V6.1	z/VSE V5.2	z/VSE V5.1
IBM TotalStorage Enterprise Storage Server model 750, 800 and 800 Turbo	ECKD	Yes	Yes	Yes
	SCSI (FCP)	Yes	Yes	Yes
IBM System Storage DS6000 series	ECKD (1)	Yes	Yes	Yes
	SCSI (FCP)	Yes	Yes	Yes
IBM System Storage DS8000 series. This includes the DS8880 family (models DS8884 and DS8886) (2,3)	ECKD	Yes	Yes	Yes
	SCSI (FCP)	Yes	Yes	Yes
IBM System Storage SAN Volume Controller (SVC), IBM Storwize V7000, IBM Storwize V5000, IBM Storwize V3500, IBM Storwize V3700, IBM FlashSystem V840, IBM FlashSystem V9000	SCSI (FCP)	Yes	Yes	Yes
IBM XIV Storage System	SCSI (FCP)	Yes	Yes	Yes
Parallel Access Volume Feature (PAV)	ECKD	Yes	Yes	Yes

**Note (1):** IBM System Storage DS6000 does not offer ESCON connectivity.

**Note (2):** Full Disk Encryption is supported by z/VSE 4.1 and later.

**Note (3):** SSD (Solid State Disk) is supported by z/VSE 4.1 and later. For performance considerations refer to the [IBM Storage](#) home page.

z/VSE support for adapters and crypto			
Adapter	z/VSE V6.1	z/VSE V5.2	z/VSE V5.1
OSA-Express, OSA-Express2, OSA-Express3, OSA-Express4S (1), OSA-Express5S (1)	Yes	Yes	Yes
FICON Express, FICON Express2, FICON Express4, FICON Express8, FICON Express8S, FICON Express16S	Yes	Yes	Yes
Crypto Express2, Crypto Express3, Crypto Express4S, Crypto Express5S (2)	Yes	Yes	Yes
CP Assist for Cryptographic Function (CPACF)	Yes	Yes	Yes

**Note (1):** The z13s, z13, zEC12 and zBC12 allow to configure OSA-Express4S and later with **OSA/SF in HMC**.

**Note (2):** The Crypto Express5s is the only crypto adapter that can be used on a z13 or z13s.

**Note:** z/VSE supports selected functions or modes. For details please refer to the [z/VSE Planning](#) manual or to the related [announcement letters](#). Additional PTFs might be required.

IBM Tape Storage Systems	Controllers	z/VSE V6.1	z/VSE V5.2	z/VSE V5.1
TS1140 (3592 Model E07) Encryption capable	C07, C06	Yes	Yes	Yes (4)
TS1130 (3592 Model E06) Encryption capable	C07, C06	Yes	Yes	Yes
TS1120 (3592 Model E05) Encryption capable	C07, C06, J70	Yes	Yes	Yes
3592 Model J1A	C06, J70	Yes	Yes	Yes
TS3400 Tape Library (Autoloader) containing up to two TS1120 tape drives	C06	Yes	Yes	Yes
3590 Model H, E and B	A50, A60	Yes	Yes	Yes
3490E	A10, A20	Yes	Yes	Yes
3490	A01, A02	Yes	Yes	Yes
3480	A22	Yes	Yes	Yes

**Note (4):** Additional PTFs are required.

IBM Tape Library Systems	Controllers	z/VSE V6.1	z/VSE V5.2	z/VSE V5.1
TS7680 ProtecTIER Deduplication Gateway	C06, tape drives: virtual 3592 J1A	Yes	Yes	Yes
TS7700 Virtualization Engine (5)	See info for tape drives.	Yes	Yes	Yes
Copy Export Function		Yes	Yes	Yes
Multi-Cluster Grid Support		Yes	Yes	Yes
3494 Virtual Tape Server (VTS)	See info for tape drives.	Yes	Yes	Yes
TS3500/3584 UltraScalable Tape Library	J70, C06	Yes	Yes	Yes
3494 TotalStorage Tape Library	J70, C06, A60	Yes	Yes	Yes

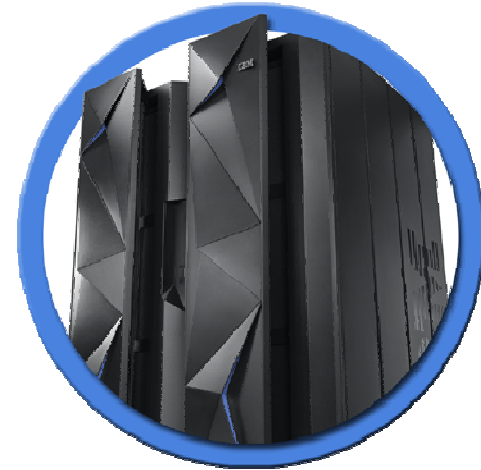
**Note (5):** When using the TS7700 tape library with z/VM's VGS (VSE Guest Support) you need to install z/VM APAR [VM64657](#)/PTF UM32727 (DFSMS/VM).

**Note:** For more information about supported devices please see the [z/VSE Planning](#) manual.

## Hardware Upgrades & Migrations

### ▪ Hardware Migration

- New System z box
- Add more capacity (processors, capacity setting)  
IBM = Install Bigger Machine ☺
- New disks, tapes, cards, etc
- Move to a new datacenter



### ▪ Software Migration

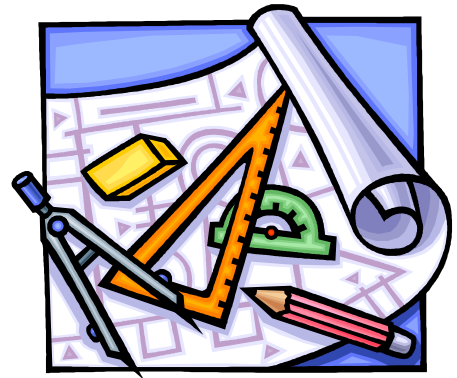
- New z/VSE release or version
- New z/VM release or version
- New (homegrown or purchased) Application
- Add new or additional workload
- Update the service level (apply PTFs)



## Hardware Upgrades & Migrations

### ▪ Planning for a migration

- Order latest updates, Products, PTFs, RSLs, PSPs, etc
- Order latest Vendor products and updates
- Consider system layout changes (if needed)
- Performance
  - Activate a performance monitor
  - Keep monitor data from old and new system for an extended time frame
- Testing
  - Make sure test systems are available to test the migration first
  - Plan for an extended testing phase
  - Test your applications, your data, performance
  - Test with high load, with lots of users, lots of data, etc
- Plan for final cutover
  - Data migration (reorganization, reformat, etc)
  - Keep an old system just in case (as backup or live)
- Plan for fallback
  - Make sure you have a proper backup available
  - Migrating data back might be tricky, if new features have been used on new system





## Hardware Upgrades & Migrations

- **Order related PSP (Preventive Service Package) before migrating to the new hardware**

→ <http://www.ibm.com/systems/z/os/zvse/support/preventive.html#psp>

– e.g. search for “2827DEVICE” (2827 = zEC12):

1.	<a href="#">Upgrade 2827DEVICE, Subset 2827/ZOS DEVICE 2827</a>	2013-03-13
2.	<a href="#">Upgrade 2827DEVICE Upgrade 2827DEVICE</a>	2013-03-13
3.	<a href="#">Upgrade 2827DEVICE, Subset 2827/ZVM DEVICE 2827</a>	2013-03-07
4.	<a href="#">Upgrade 2827DEVICE, Subset 2827/ZVSE DEVICE 2827</a>	2012-12-07

	DATE	APAR	PTF	VOLID	COMMENTS
6	12/10/26	<a href="#">PM70045</a>	<a href="#">UK82199</a>	1000	OSA/SF VSE IOAC139E AT OSA/SF ST
5	12/10/26	<a href="#">PM73907</a>	<a href="#">UK82285</a>	1000	OSA/SF VSE IOAC139E AT OSA/SF ST
4	12/09/10	<a href="#">PM66334</a>	<a href="#">UK81559</a>	1000	NEW FUNCTION - 42325
3	12/09/07	<a href="#">PM49761</a>	<a href="#">UK81532</a>	1000	NEW FUNCTION 45033
2	12/08/31	<a href="#">DY47406</a>	<a href="#">UD53875</a>	1000	NEW FUNCTION
1	12/08/31	<a href="#">DY47404</a>	<a href="#">UD53871</a>	1000	NEW FUNCTION

- **Concurrent microcode upgrade for IBM System Storage**

- **ECKD disks:** z/VSE recommends to shutdown the z/VSE system prior to the microcode upgrade.
- **FCP-attached SCSI disks:** z/VSE does not support concurrent microcode upgrade for FCP-attached SCSI disks.

- **Recommendation for IBM Tape Storage:**

- z/VSE with the latest service level supports concurrent microcode upgrade for IBM Tape Storage
- z/VSE recommends to take the tape units offline (z/VSE OFFLINE command) prior to the microcode upgrade or use the next maintenance window
- Once the upgrade completed, take the tape units online again (z/VSE ONLINE command)
- Please check with your software vendors (e.g. tape management systems), if they support concurrent microcode upgrade.

## Hardware Upgrades & Migrations

### ▪ New processor

– At first IPL on new processor, you will see ‘**OVERLAP ON UNEXPIRED FILE**’ messages

- Page dataset
- Label area (old systems only, newer systems use VDISK)

→ Enter **DELETE** to let it reformat the page dataset

– For a shared system

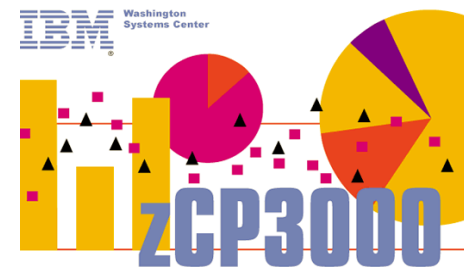
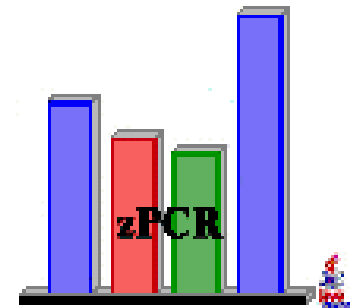
- Make sure **CPUID** is changed in **ASIPROC**
- Check **DLF NCPU** parameter is still sufficient

### ▪ OSA/SF for SNA configuration

Adapter	OSA/SF in HMC	OSA/SF (latest PTFs)
OSA Express 3	No	Yes
OSA Express 4S	Yes	Yes
OSA Express 5S	Yes	No

## Hardware Sizing and Capacity Planning

- **Sizing a system for z/VSE is different from sizing a system for z/OS**
  - In general, a faster single CPU is better than multiple smaller CPUs
  
- **IBM Processor Capacity Reference for System z (zPCR)**
  - It is designed to provide capacity planning insight for IBM System z processors running various workload environments
  - Capacity results are based on IBM's LSPR data supporting all IBM System z processors
  - Large System Performance Reference: <http://www.ibm.com/systems/z/advantages/management/lspr/>
  - For VSE use z/VSE workloads Batch, Online or Mixed
  - <http://www.ibm.com/support/techdocs/atmastr.nsf/WebIndex/PRS1381>
  - 'As is', no official support, e-mail to [zpcr@us.ibm.com](mailto:zpcr@us.ibm.com)
  
- **A z/VSE Capacity Planning Offering is now available**
  - Available for Business Partners and Customers
  - Performance data collection is based on a new version of the CPUMON Tool
  - Analysis is done using zCP3000
  - Contact [techline@us.ibm.com](mailto:techline@us.ibm.com) and ask for z/VSE Capacity Planning Support



## Some Terms and Definitions

### ▪ **Version / Release / Modification Level**

- z/VSE 5.1.2 = Version 5, Release 1, Modification Level 2
- Version and Release start counting at 1
- Modification Level starts counting at 0
  - At GA of a new Version or Release, the Modification Level is zero
  - z/VSE 6.1 GA = z/VSE 6.1.0



### ▪ **Refresh or Refresh Level**

- Same as a new Modification Level
  - e.g. z/VSE 5.1.1 is a Refresh of z/VSE 5.1(.0)
- When you order z/VSE you always get the newest Refresh Level
- SPE = Small Programming Enhancement (usually as part of a Refresh)

### ▪ **GA Version (GA = Globally Available)**

- The service level at the time the Version or Release becomes available
- Usually no PTFs applied (vanilla system)

### ▪ **PTF-1**

- A set of PTFs that are already available at the time of GA
- Fixes problems that have been found between shipment to the distribution centers, and GA
- It is strongly recommended to order and apply those PTFs right after or during migration!

## Some Terms and Definitions - continued

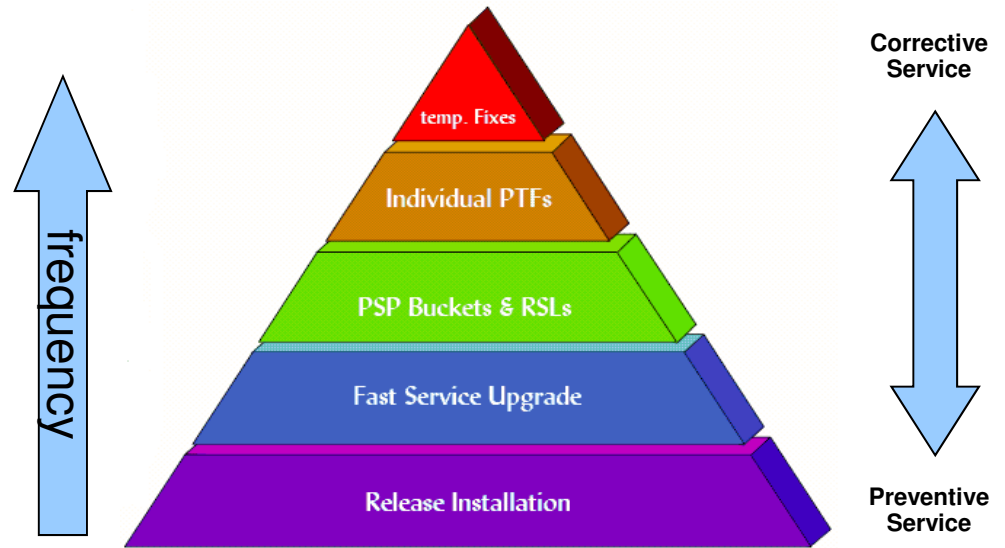
- **HIPER = High Impact or Pervasive APAR**
  - An APAR that was flagged as especially important
    - Data loss, integrity
    - Device or hardware specific
  
- **PSP bucket = Preventive Service Planning**
  - PSP buckets contain [all HIPER PTFs](#)
    - For a specific set of products or components
    - On a given z/VSE refresh level
  - <http://www14.software.ibm.com/webapp/set2/psearch/search?domain=psp>
  
- **RSL = Recommended Service Level**
  - Fills the gap between z/VSE refresh levels and the HIPER service (PSP buckets)
  - An RSL consists of a list of ALL APAR/PTF numbers, not only the HIPER service.
    - which are available at specific cutoff dates
  - RSLs are updated more frequently than refreshes
  - <http://www-03.ibm.com/systems/z/os/zvse/support/preventive.html#rsl>
  
- **Installed Software Report Tool (ISR Tool)**
  - To be used with Shopz service orders
  - Report contains a list of products and PTFs that are already installed on your system
    - MSHP RETRACE PRODUCT and RETRACE PTFS
    - Allows Shopz to ship only those PTFs that are not applied



## z/VSE Service Deliverables

### Priority 1: Stay on a supported level

- Make sure that your system is always on a **supported level** to get help and support from IBM when you need it
- Plan ahead sufficient time for release or version upgrade and for PTF installation
- Consult your **software vendors** for upgrades and specific information



	Refresh	RSL	PSP	PTF
What is it	Complete Product (includes all PTFs)	List of ALL PTFs at a cut off day	List of selected PTFs (HIPER)	Official Fix for a code problem (APAR)
When is it available	Every 6-12 Month, usually for the newest release	Every 2-3 Month	Is constantly kept up to date	Will be created when a fix is available
When should it be installed	For base install or Fast Service Upgrade (FSU)	Preventive to stay on an current level	After a refresh installation and preventive to avoid HIPER problems	To fix a certain problem



## Service Recommendations

→ It is essential to have a **preventive maintenance strategy**

### Our recommendations:

- Install the latest **Refresh** every 12-24 months
- Install the newest **RSL** every 6-12 months
- Install the newest **PSP** Bucket every 3-6 months
- Install **Fix/PTFs** for vendor software every 3-6 months
- Install the **hardware PSP** before you install new hardware
- And plan sufficient time for service installation !



## Ordering Products and Service

### ▪ Order a new z/VSE System or a Refresh

- You get 2 (or 3) tapes (as AWS images)
  - z/VSE Base Tape
  - z/VSE Extended Base Tape
  - (DB2 Help Texts)
- For Base Install
- Or Fast Service Upgrade (FSU)

### ▪ Order Optional Products

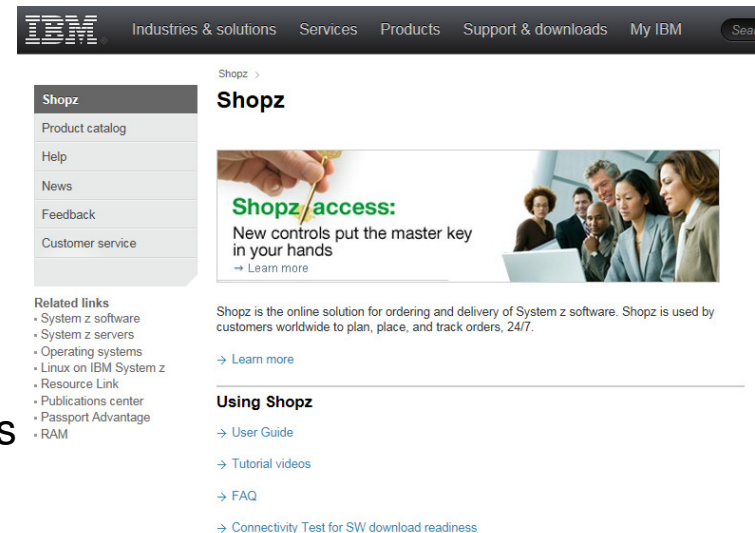
- You get 1 to N stacked tapes (as AWS images)
- To be installed through Interactive Interface dialogs

### ▪ Order APARs, PTFs, RSLs, PSPs

- You get a set of PTFs
- As binary file with LRECL 80 (most likely zipped to save download time)
- Apply via Interactive Interface dialogs
  - Through PTF.FILE (IJSYSPF)
  - Or VTAPE

### IBM Shopz:

[http://www-304.ibm.com/software/shopzseries/ShopzSeries\\_public.wss](http://www-304.ibm.com/software/shopzseries/ShopzSeries_public.wss)



Industries & solutions Services Products Support & downloads My IBM

Shopz >

**Shopz**

Product catalog  
Help  
News  
Feedback  
Customer service

**Shopz access:**  
New controls put the master key in your hands  
→ Learn more

Related links  
• System z software  
• System z servers  
• Operating systems  
• Linux on IBM System z  
• Resource Link  
• Publications center  
• Passport Advantage  
• RAM

Shopz is the online solution for ordering and delivery of System z software. Shopz is used by customers worldwide to plan, place, and track orders, 24/7.  
→ Learn more

**Using Shopz**  
→ User Guide  
→ Tutorial videos  
→ FAQ  
→ Connectivity Test for SW download readiness



## Ordering z/VSE 6.1

### A new license is required for the new versions of IBM TCP/IP for z/VSE V2.1 and CICS TS for z/VSE V2.1 on z/VSE V6.1

- Customers using IBM TCP/IP for VSE/ESA V1.5 on z/VSE V5, require a new license for the new version of IBM TCP/IP for z/VSE V2.1 when ordering z/VSE V6.1.
- Customers using CICS TS for VSE/ESA V1.1.1, require a new license for the new version of CICS TS for z/VSE V2.1 when ordering z/VSE V6.1.
- In order to ensure licensing for the new TCPIP and CICS TS product versions, you need to **select the product(s) applicable when ordering z/VSE V6.1 in Shopz**, or by placing an additional order for either of the products, if you have ordered z/VSE V6.1 already.
- z/VSE V6.1 only supports CICS TS for z/VSE V2.1 and IBM TCP/IP for z/VSE V2.1. Older versions of these 2 products are not supported with z/VSE V6.1.



# Information about APARs and PTFs



→ <http://www.ibm.com/systems/z/os/zvse/support/corrective.html>

## Service and support

Introduction
Preventive service
Corrective service

z/VSE V6.1
z/VSE V5.2
z/VSE V5.1
Unsupported releases

→ General

→ Advanced functions (AF)

→ VSAM

→ POWER

→ Interactive interface & ICCF

→ Language Environment (LE)

→ z/VSE Connectors

→ CICS Transaction Server

→ TCP/IP for z/VSE

→ IPv6/VSE

→ DL/I

→ REXX

→ z/VSE VTAPE

<http://www14.software.ibm.com/webapp/set2/psearch/search?domain=sysz>

## Technical help database

for System z

### Search

Search for:

Sort by:  Hits per doc type:

→ [Search tips](#) → [Start a new search](#)

### Document types

- All
- APARs
- FAQs
- Product information
- Education
- Technotes
- Flashes
- Preventive service planning
- Redbook abstracts
- Solutions
- White papers

### Latest VSE/AF 9.3 APARs for z/VSE V6.1

Last update: April 22, 2016

APAR Date	PTF	Contents
<a href="#">DY47663</a> 2016/04/22	UD54182-61C	Remove READ parameter in ADD statement
<a href="#">DY47658</a> 2016/03/22	UD54173-61C	Linux Fast Path runs out of buffers due to a buffer leak
<a href="#">DY47647</a> 2016/02/17	UD54168-61C	QVS enhancement D/T2964 and D/T2965
<a href="#">DY47644</a> 2016/01/22	UD54158-61C UD54159-61J	Hardwait FFF due to addr. exception in RELPAG service I
<a href="#">DY47640</a> 2015/12/17	UD54153-61C UD54154-61J	Hardwait FEC during IPL

# Recommended Service Levels and PSP Buckets



## PSP Buckets

<http://www.ibm.com/systems/z/os/zvse/support/preventive.html#psp>

e.g. search for “ZVSE610” or “ZVSE511”

	Modified	DATE	SUBSET ALTERED	COMMENTS
1-10 of 41 results   <a href="#">Next</a> →				
1. <a href="#">Upgrade ZVSE510. Subset IBMLANG/51K</a> LE/VSE BASE Version 1, Release 4, Modification 8	2013-02-22	34 13/02/22	IBMLANG/51K	SECTION 4, ADDED ITEM 9 <a href="#">PM81989</a> <a href="#">UK91611</a>
2. <a href="#">Upgrade ZVSE510</a> VERSION 5, RELEASE 1, MODIFICATION LEVEL 0 of z/VSE	2013-02-22	33 13/02/21	ZVSE/51C	SECTION 4, ADDED ITEM 24 <a href="#">DY47454</a> <a href="#">UD53929</a>
3. <a href="#">Upgrade ZVSE510. Subset ZVSE/51C</a> VSE Central Functions Version 9, Release 1, Modification 0	2013-02-21	32 13/02/08	ZVSE/51C	SECTION 4, ADDED ITEM 25 <a href="#">DY47454</a> <a href="#">UD53928</a>
		31 12/12/21	ZVSE/51C	SECTION 4, ADDED ITEM 23 <a href="#">DY47452</a> <a href="#">UD53927</a>
		30 12/12/11	ZVSE/51C	SECTION 4, ADDED ITEM 21 <a href="#">DY47447</a> <a href="#">UD53922</a>
		29 12/11/30	IBMLANG/51K	SECTION 4, ADDED ITEM 22 <a href="#">DY47446</a> <a href="#">UD53921</a>
			IBMLANG/51K	SECTION 4, ADDED ITEM 20 <a href="#">DY47391</a> <a href="#">UD53846</a>
			IBMLANG/51K	SECTION 4, ADDED ITEM 6 <a href="#">PM74318</a> <a href="#">UK82386</a>
			IBMLANG/51K	SECTION 4, ADDED ITEM 7 <a href="#">PM73473</a> <a href="#">UK82153</a>
			IBMLANG/51K	SECTION 4, ADDED ITEM 8 <a href="#">PM73461</a> <a href="#">UK82432</a>

## Recommended Service Levels (RSLs)

<http://www.ibm.com/systems/z/os/zvse/support/preventive.html#rsl>

Service recommended for	PTF Order List	Cutoff Date
z/VSE 6.1.0	<a href="#">Base Products</a> → <a href="#">PTFs 610B</a> <a href="#">Optional Prod.</a> → <a href="#">PTFs 610O</a>	Jan 15, 2016
z/VSE 5.2.0	<a href="#">Base Products</a> → <a href="#">PTFs 520B</a> <a href="#">Optional Prod.</a> → <a href="#">PTFs 520O</a>	Jan 15, 2016
z/VSE 5.1.2	<a href="#">Base Products</a> → <a href="#">PTFs 512B</a> <a href="#">Optional Prod.</a> → <a href="#">PTFs 512O</a>	Jan 15, 2016
z/VSE 5.1.1	<a href="#">Base Products</a> → <a href="#">PTFs 511B</a> <a href="#">Optional Prod.</a> → <a href="#">PTFs 511O</a>	April 9, 2013
z/VSE 5.1.0	<a href="#">Base Products</a> → <a href="#">PTFs 510B</a> <a href="#">Optional Prod.</a> → <a href="#">PTFs 510O</a>	Apr 26, 2012

### Recommended service levels

PTF numbers 15/01/16

**z/VSE base Products - 6.1.0**

**CICS Transaction Server for z/VSE 2.1**

none

**DITTO/ESA VERSION 1.3.0**

UI29161 UI32441

**EREP 3.5.0**

none

**ICKDSF 1.17.0**

UI33410

Copy & Paste the entire PTF order list into ShopZ

- Don't worry about the text around, ShopZ will filter out anything that's not a PTF number

# IBM Subscription Services

→ Get notified when APARs are closed

<https://www-947.ibm.com/systems/support/myview/subscription/css.wss/folders?methodName=listMyFolders>

**My notifications**

Delivery preferences Help

Product notifications APARs

## Subscribe to notifications

Product lookup:

Browse for a product

## Product subscriptions

1-1/1 results

Delivery preferences

Product	Notifications	RSS/Atom feed	Document types
z/VSE family	<a href="#">View</a>	<a href="#">Links</a>	<a href="#">Edit</a> <a href="#">Unsubscribe</a>

1-1/1 results

# IBM Subscription Services

→ Get notified when APARs are closed

<https://www-947.ibm.com/systems/support/myview/subscription/css.wss/folders?methodName=listMyFolders>

**My notifications**

Delivery preferences Help

Product notifications APARs

## Subscribe to notifications

Product lookup: VSE ✕ [Browse for a product](#)

- z/VSE family	✓ Subscribed ( <a href="#">Unsubscribe</a> )
- DB2 Server for VSE & VM	+ <a href="#">Subscribe</a>
- Debug Tool for VSE/ESA	+ <a href="#">Subscribe</a>
- Sterling Connect:Direct for VM/VSE	+ <a href="#">Subscribe</a>
- VTAM for VSE/ESA and VM/ESA	+ <a href="#">Subscribe</a>
- COBOL for VSE/ESA	+ <a href="#">Subscribe</a>
- PL/I for VSE	+ <a href="#">Subscribe</a>
- VisualAge Generator EGL Plug-in for VSE	+ <a href="#">Subscribe</a>

Product sub

1-1/1 results

Product ⌵

z/VSE family

1-1/1 results

[Delivery preferences](#)

[Unsubscribe](#)

# IBM Subscription Services

→ Get notified when APARs are closed

<https://www-947.ibm.com/systems/support/myview/subscription/css.wss/folders?methodName=listMyFolders>

The screenshot shows the 'My notifications' page with a modal window titled 'Browse for a product'. The modal lists various product categories with expandable arrows and subscription options. A red box highlights the 'Browse for a product' button in the background. The background page includes a sidebar with 'Product notifications', 'Subscribe to...', and 'Product subscription' sections. The main content area shows '1-1/1 results' and a 'Product' dropdown menu with 'z/VSE family' selected. The modal window lists the following products and their subscription status:

- Lognos
- Collaboration Solutions
- Decision Optimization
- Enterprise Content Management
- Enterprise Marketing Management
- Financial Operations
- IBM Monitors
- IBM Operating Systems
  - AIX
  - IBM i
    - z/OS family - all hardware, OS, and related software
    - z/VM family
    - z/VSE family
- IBM Security
- IBM Systems Director
- Industry Analytics Solutions
- Information Management
- IntelliStation Pro
- Older System x
- OpenPages

Subscription options for the modal items:

- Lognos: + [Subscribe to all](#)
- IBM i: + [Subscribe](#)
- z/OS family: + [Subscribe](#)
- z/VSE family: [Subscribed](#) (- [Unsubscribe](#))
- IntelliStation Pro: + [Subscribe to all](#)
- Older System x: + [Subscribe to all](#)

# IBM Subscription Services

→ Get notified when APARs are available

<https://www-947.ibm.com/systems>

[?methodName=listMyFolders](#)

## My notifications

Product notifications

## Subscribe to notifications

Product lookup: VSE

## Product subscription

1-1/1 results

Product ▾

- z/VSE family
- 1-1/1 results

### Select document types

Select the types of documents for which you want to receive notifications. Fields marked with an asterisk (\*) are required.

Document type\*

---

swotMain  Security bulletin

---

swotMain  Flashes

---

swotMain  News

---

swotMain  Downloads and drivers

---

swotMain  Fixes

---

swotMain  Recommended

---

swotMain  High-Impact / Pervasive (HIPER)

---

swotMain  Security Vulnerability (Sec/Int)

---

swotMain  Troubleshooting

---

swotMain  Technotes

---

swotMain  APARs (Authorized Program Analysis Reports)

---

swotMain  Fix readmes

---

swotMain  Preventative Service Planning

---

swotMain  PTF (Program Temporary Fix) cover letter

---

swotMain  Product information and publications

---

swotMain  Webcasts

[Delivery preferences](#)

[Help](#)

[Browse for a product](#)

[Unsubscribe](#)

[Delivery preferences](#)

[Unsubscribe](#)

# IBM Subscription Services

→ Get notified when APARs are closed

<https://www-947.ibm.com/systems/support/myview/subscription/css.wss/folders?methodName=listMyFolders>

The screenshot shows the 'My notifications' page with a modal window titled 'Delivery preferences' open. The modal window contains the following settings:

- Send notifications via e-mail:**  [Change your e-mail address](#) (ifranzki@de.ibm.com)
- E-mail frequency:** (Flashes and security bulletins will be sent as soon as possible)
  - Daily
  - Weekly
- E-mail format:**
  - HTML
  - Plain text
- Include machine translation of notifications (if available):**  [Change your preferred language](#)

At the bottom of the modal window, there is a message: **Delivery preferences are applicable to all current and future subscriptions.** and two buttons: **Submit** and **Cancel**.

In the background, the 'My notifications' page has a sidebar with 'Subscriptions' and 'Products' sections. The main content area includes links for 'Delivery preferences', 'Help', 'Browse for a product', and 'Unsubscribe'.



## Ordering PTFs using IBM Shopz

[http://www-304.ibm.com/software/shopzseries/ShopzSeries\\_public.wss](http://www-304.ibm.com/software/shopzseries/ShopzSeries_public.wss)

Shopz >

Shopz
My orders
My preferences
My hardware systems
My licensed software
My installed software
My downloads
Product catalog
Help
News
Feedback
Customer service

**Related links**

- System z software
- System z servers
- Operating systems
- Linux on IBM System z
- Resource Link
- Publications center
- Passport Advantage
- RAM

### Shopz

Group

Welcome to Shopz! The major features of Shopz which you are authorized to use are explained below. You can link to them directly from the left navigation area.

**My orders** lets you manage all of your software orders. You can:

- create new software orders for service or products,
- continue preparing draft orders that you haven't submitted yet,
- track, process and download in process orders, and
- review your completed orders which are retained indefinitely for your reference.

**My hardware systems** lets you review your hardware systems and provide your own details for them.

**My licensed software** lets you view your software licenses in a variety of report formats.

**My installed software** lets you manage the installed software reports that you provide Shopz so that it can tailor your software orders to your current environment.

**My downloads** lets you download the software for your licensed standalone products and fixes.

# Ordering PTFs using IBM Shopz

[http://www-304.ibm.com/software/shopzseries/ShopzSeries\\_public.wss](http://www-304.ibm.com/software/shopzseries/ShopzSeries_public.wss)

Shopz > My orders > Create new order >

## My orders

[Create new order](#) [Draft orders](#) [In process](#) [Completed](#)

To begin the software ordering process, select the appropriate values below. Packages indicated with an asterisk (\*) require service contracts.

Customer number

Package category [\[Help\]](#)

- KVM for IBM z - Standalone products and fixes
- z/OS - Service
- z/OS - Products
- z/OS - Driving Systems
- z/VM - Service
- z/VM - Products
- z/VSE - Service
- z/VSE - Products

[Continue](#)

# Ordering PTFs using IBM Shopz

[http://www-304.ibm.com/software/shopzseries/ShopzSeries\\_public.wss](http://www-304.ibm.com/software/shopzseries/ShopzSeries_public.wss)

Shopz > My current order > Specify order basics >

## Step 1 of 5 Specify order basics

Review and specify the basic details of your order.

Order name	<input type="text" value="My VSE Servcie order"/>
Customer number	S006XFXTQ0
Operating environment	z/VSE
Package category	Service
Package type	<input checked="" type="radio"/> Individual PTFs by PTF number <input type="radio"/> Individual PTFs by APAR number

[\[Help\]](#)

# Ordering PTFs using IBM Shopz

[http://www-304.ibm.com/software/shopzseries/ShopzSeries\\_public.wss](http://www-304.ibm.com/software/shopzseries/ShopzSeries_public.wss)

Shopz > My current order > Report installed software >

- Shopz
- My orders
- My current order
- My preferences
- My hardware systems
- My licensed software
- My installed software
- My downloads
- Product catalog
- Help
- News
- Feedback
- Customer service

## Step 2 of 5 Report installed software

My VSE Service order

This order optionally uses an installed software report. It is used to identify the products and features which are available to be serviced and to exclude service which you have already received.

Select an installed software option.

- Do not use a report for this order
- Use an existing report for this order
- Replace an existing report for this order
- Upload a new report for this order

Report name

Report name

File name

Report name

File name

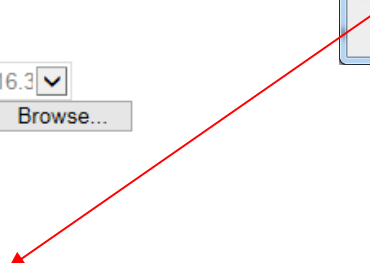
<http://ibm.com/zvse/downloads/tools.html#isrtool>

ShopzSeries VSE Installed Software Report Generator

Profile: VSELP61  
 IP or hostname: vselfp61  
 User ID: SYSA  
 Customer No.: 9999999  
 Description:  
 Exclude CLCs:  
 Additional CLCs:

Output file:

Profile	Customer	Description
VSELP51	9999999	
VSELP61	9999999	



# Ordering PTFs using IBM Shopz

[http://www-304.ibm.com/software/shopzseries/ShopzSeries\\_public.wss](http://www-304.ibm.com/software/shopzseries/ShopzSeries_public.wss)

Shopz > My current order > Specify order contents >

## Step 3 of 5 Specify order contents

My VSE Service order

- Shopz
- My orders
- My current order
- My preferences
- My hardware systems
- My licensed software
- My installed software
- My downloads
- Product catalog
- Help
- News
- Feedback
- Customer service

Enter the PTFs you would like to order separated by blanks or commas. [\[Help\]](#)

UD54182



### Requisite service

Requisite service is service that is required to install other service. For z/OS individual PTF orders, you can decide whether you want requisite service to be included. If you do not provide an installed software report for z/OS individual PTF orders, requisite service is only included from the past 90 days. For z/VSE individual PTF orders, you can decide whether you want requisite service to be included. If you do not provide an installed software report for z/VSE PTF orders, you may choose to include fixes for a specific z/VSE service level by selecting an item from the pull down menu at the bottom of the page. It is therefore recommended to use an installed software report when ordering individual PTFs/APARs.

Include requisite service from service level E610 [\[Help\]](#)

- Previous
- Save
- Discard
- Continue

# Ordering PTFs using IBM Shopz

[http://www-304.ibm.com/software/shopzseries/ShopzSeries\\_public.wss](http://www-304.ibm.com/software/shopzseries/ShopzSeries_public.wss)

<b>Shopz</b>
My orders
My current order
My preferences
My hardware systems
My licensed software
My installed software
My downloads
Product catalog
Help
News
Feedback
Customer service

Shopz > My current order > Specify delivery options >

## Step 4 of 5 Specify delivery options

My VSE Service order

Specify how you would like your order delivered.

The fields indicated with an asterisk (\*) are required to complete this transaction; other fields are optional. If you do not want to provide us with the required information, please use the "Back" button on your browser to return to the previous page, or close the window or browser session that is displaying this page.

### Delivery media

Preferred media\*

Additional delivery options will be displayed on this page after you have selected your preferred delivery media.

Alternate media

(if size limit exceeded)

# Ordering PTFs using IBM Shopz

[http://www-304.ibm.com/software/shopzseries/ShopzSeries\\_public.wss](http://www-304.ibm.com/software/shopzseries/ShopzSeries_public.wss)

<b>Shopz</b>
My orders
My current order
My preferences
My hardware systems
My licensed software
My installed software
My downloads
Product catalog
Help
News
Feedback
Customer service

Shopz > My current order > Review and submit >

## Step 5 of 5 Review and submit

My VSE Service order

Your order is ready to be submitted for fulfillment. Please review it before submitting it.

### Order basics

Order name	My VSE Service order
Date created	2016-06-15 20.37.06
Last modified	2016-06-15 20.37.06
Customer number	S006XFXTQ0
Operating environment	z/VSE
Package category	Service
Package type	Individual PTFs by PTF number

[← Edit Order basics](#)

### Installed software

None

# Ordering PTFs using IBM Shopz

[http://www-304.ibm.com/software/shopzseries/ShopzSeries\\_public.wss](http://www-304.ibm.com/software/shopzseries/ShopzSeries_public.wss)

- Shopz**
- My orders
- My current order
- My preferences
- My hardware systems
- My licensed software
- My installed software
- My downloads
- Product catalog
- Help
- News
- Feedback
- Customer service

Shopz > In process > Processing >

## My orders

- Create new order
- Draft orders
- In process
- Completed

Processing | Awaiting approval

To review or process an order, click on its name. To track it, click on its status.

Load new orders into view(please be patient)

[Refresh order status](#)

### In process orders

	Order reference number - Order name	Status	
<input type="checkbox"/>	<a href="#">U01800834 - My VSE Service order</a> Customer number: S006XFXTQ0 IBM order number: B3647812	<a href="#">Download</a>	<a href="#">History</a>

[Delete selected orders](#)



# Ordering PTFs using IBM Shopz

[http://www-304.ibm.com/software/shopzseries/ShopzSeries\\_public.wss](http://www-304.ibm.com/software/shopzseries/ShopzSeries_public.wss)

<b>Shopz</b>
My orders
My current order
<b>- Download</b>
My preferences
My hardware systems
My licensed software
My installed software
My downloads
Product catalog
Help
News
Feedback
Customer service

Shopz > Download >

## Download U01800834 - My VSE Service order

Download expires on 29 Jun 2016

**Installation instructions**  
[View now](#)

**Readme file for Order# B3647812**  
[View Now\(0.002 MB\)](#)

**Service Overview for Order# B3647812**  
[View Now\(0.008 MB\)](#)

**VSE PTF Envelope for Order# B3647812**  
[Download to your workstation using IBM Download Director\(0.061 MB\)](#)  
[Download to your workstation using HTTPS\(0.061 MB\)](#)

## Applying electronic PTFs



→ <http://www.ibm.com/systems/z/os/zvse/documentation/edelivery.html#eptf>

### ▪ Using upload (TCP/IP FTP or IN\$FILE)

- Upload this file into PTF.FILE (IJSYSPF)
  - in BINARY with LRECL 80 and BLKSIZE 10320
- Apply service using the Interactive Interface dialog (1423)
  - Service Medium is DISK

### ▪ Using VTAPE

- Rename Shiptfs.bin to Shiptfs.[ptf](#)
- Apply service using the Interactive Interface dialog (1423)
  - Service Medium is TAPE
  - Select to use virtual tape
  - On panel UTL\$VTA2 specify the IP address or hostname of your PC or workstation (where the VSE Virtual Tape Server runs)
  - Also specify the full qualified path and file name of the shiptfs.ptf file where it resides on your PC or workstation

### ▪ PTF files should NOT be transferred directly to the z/VSE system (POWER reader), because

- PRE- and CO-requirements may not be fulfilled due to wrong order of PTFs, CO-requirements will not work at all
- POWER JECL included in the data part of the PTFs will be processed while running the job
  - This leads to modified contents of the PTF and also might cause the code to be incomplete
- Missing POWER JECL in the PTF file causes POWER to extract VSE JOB cards, this also leads to modified contents of the PTF and may also be incomplete due to job termination
- No indirect application possible

## Applying electronic PTFs using PTF.FILE (IJSYSPF)



- Define the PTF.FILE (IJSYSPF) to TCP/IP
  - For CSI: `DEFINE FILE,TYPE=ESDS,DLBL=IJSYSPF,PUBLIC=' IJSYSPF '`
- Transfer the PTF file directly to disk into the VSAM file IJSYSPF:
 

```
ftp> quote site unix off
ftp> bin
ftp> quote site recfm fb
ftp> quote site lrecl 80
ftp> quote site blksize 10320
ftp> put ptffile.bin IJSYSPF
```
- Apply service using IUI dialog, service medium is **disk**. Fastpath 1423

```

SRV$PH19                                APPLY PTF
Enter the required data and press ENTER.
SERVICE MEDIUM..... 2                 Is the service file on tape?
                                         (Enter 2 if on disk)
VIRTUAL TAPE..... 2                     Enter 1 if service tape is a
                                         remote virtual tape.
TAPE UNIT ADDRESS..... _____      For list of valid addresses see HELP.
TAPE QUANTITY..... 1                     Enter the number of service tapes
TYPE..... 1                               Enter the type of mass-application
                                         1=ALL 2=INCLUDE 3=EXCLUDE
Enter 2 for NO and 1 for YES
BACKUP..... 1                             Do you want to backup all affected
                                         libraries?
FORCE INDIRECT..... 2                     Do you want to apply all PTFs indi-
                                         rectly?
ADD INFO TO THE LIST..... 1               Do you want to add this info to the
                                         list of your processed service units?
                                         For tapes only one tape is possible.

PF1=HELP      2=REDISPLAY  3=END

```

## Applying electronic PTFs using VTAPE



- Extract Shiptfs.bin from ZIF file downloaded from ShopZ
- Change file extension, e.g. shiptfs.bin → shiptfs.ptf
- Apply service using IUI dialog, Fastpath 1423
  - Service Medium is Tape
  - VIRTUAL TAPE = 1 (yes) → prompts for parameters for VTAPE on next panel

```

SRV$PH19          APPLY PTF

Enter the required data and press ENTER.

SERVICE MEDIUM..... 1          Is the service file on tape?
                                (Enter 2 if on disk)
VIRTUAL TAPE..... 1             Enter 1 if service tape is a
                                remote virtual tape.
TAPE UNIT ADDRESS..... 181      UTL$VTA3          VIRTUAL TAPE: SPECIFY THE DATA SET
TAPE QUANTITY..... 1
TYPE..... 1                    Enter the required data and press ENTER.
Enter 2 for NO and 1 for YES
BACKUP..... 1                  Service application from remote virtual tape.
                                Specify the following residence values of the service tape:
FORCE INDIRECT..... 2          Hostname           my.vtape.server.ibm.com_____
                                or
                                IP Address:         _____
                                ...
                                ...
                                ...
PORT.....                      TCP/IP port number
DATA SET NAME :  d:/VSE/shiptfs.ptf_
...
...
...
PF1=HELP          2=REDISPLAY  3=END
    
```

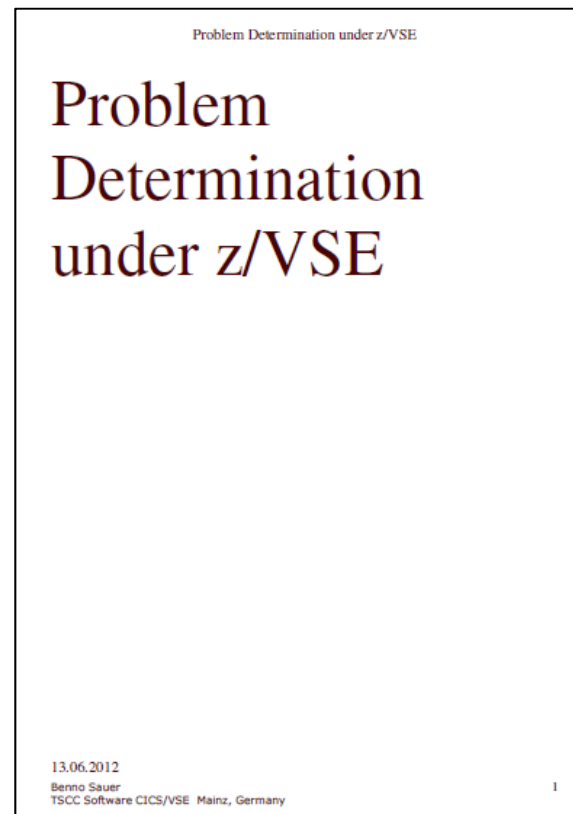
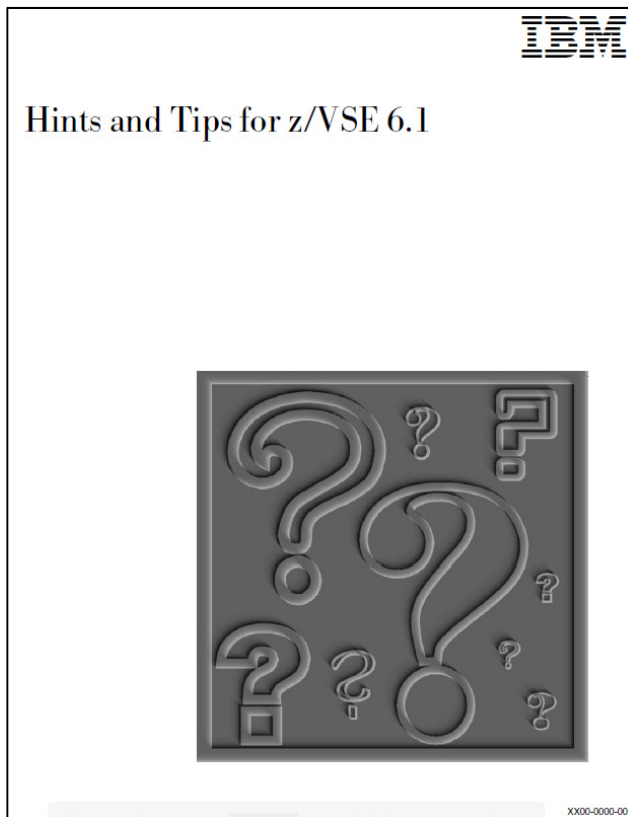
# Hints & Tips for z/VSE

<http://www-03.ibm.com/systems/z/os/zvse/documentation/#hints>



## System Hints and Tips for z/VSE

- z/VSE Problem Determination Guide (PDF, 220KB)
- Hints and Tips for z/VSE 6.1 (PDF, 960KB)
- Hints and Tips for z/VSE 5.2 (PDF, 1.1MB)
- Hints and Tips for z/VSE 5.1 (PDF, 900KB)



# News & Announcements

<http://www-03.ibm.com/systems/z/os/zvse/news/>

IT infrastructure > z Systems (Mainframes) > Operating systems > z/VSE >

## News

News | Announcements | Archive



### IBM Subscription Services

IBM Subscription Services lets you register for timely e-mail delivery of selected IBM information such as announcement letters, press releases, a weekly digest, and special promotions.



### Get the latest news about z/VSE through Twitter [G>](#)

Follow **IBMzVSE** to stay informed about the latest news about z/VSE.  
z/VSE hash tags: #zvse #ibmzvse #IBMz

### News of interest to z/VSE customers

Date	Description
April 12, 2016	<b>Announcement: z/VSE V6 - What will be next</b> For more information please see the <a href="#">Announcement letter</a>
April 4, 2016	<p><b>A new license is required for the new versions of IBM TCP/IP for z/VSE V2.1 and CICS TS for z/VSE V2.1 on z/VSE V6.1</b></p> <ul style="list-style-type: none"> <li>Customers using IBM TCP/IP for VSE/ESA V1.5 on z/VSE V5, require a new license for the new version of IBM TCP/IP for z/VSE V2.1 when ordering z/VSE V6.1.</li> <li>Customers using CICS TS for VSE/ESA V1.1.1, require a new license for the new version of CICS TS for z/VSE V2.1 when ordering z/VSE V6.1.</li> </ul> <p>In order to ensure licensing for the new TCPIP and CICS TS product versions, you need to select the product(s) applicable when ordering z/VSE V6.1 in Shopz, or by placing an additional order for either of the products, if you have ordered z/VSE V6.1 already.</p> <p>z/VSE V6.1 only supports CICS TS for z/VSE V2.1 and IBM TCP/IP for z/VSE V2.1. Older versions of these two products are not supported with z/VSE V6.1.</p>
November 27, 2015	<b>IBM z/VSE V6.1 is now available</b>



# Hot Service News

<http://www-03.ibm.com/systems/z/os/zvse/support/#news>

Hot service news	
Date	Description
April 25, 2016	<p><b>z/VSE 6.1.0 PSP Bucket Shopz orders</b>                      At the moment (as of April 25, 2016) there is no HIPER flagged service available for z/VSE 6.1.0. This means there is no need to place a PSP bucket order on Shopz when you have just installed the new z/VSE 6.1.0 release.                      If you have already placed such a PSP Bucket order for z/VSE 6.1.0, then you will receive PTF's for a back level release of EREP (5656-260-01-D10) which can be ignored. If you try to install them, you will receive message: 'Product 260D10 is not installed on your system'. This can then be ignored.</p>
April 4, 2016	<p><b>A new license is required for the new versions of IBM TCP/IP for z/VSE V2.1 and CICS TS for z/VSE V2.1 on z/VSE V6.1</b></p> <ul style="list-style-type: none"> <li>Customers using IBM TCP/IP for VSE/ESA V1.5 on z/VSE V5, require a new license for the new version of IBM TCP/IP for z/VSE V2.1 when ordering z/VSE V6.1.</li> <li>Customers using CICS TS for VSE/ESA V1.1.1, require a new license for the new version of CICS TS for z/VSE V2.1 when ordering z/VSE V6.1.</li> </ul> <p>In order to ensure licensing for the new TCP/IP and CICS TS product versions, you need to select the product(s) applicable when ordering z/VSE V6.1 in Shopz, or by placing an additional order for either of the products, if you have ordered z/VSE V6.1 already.</p> <p>z/VSE V6.1 only supports CICS TS for z/VSE V2.1 and IBM TCP/IP for z/VSE V2.1. Older versions of these two products are not supported with z/VSE V6.1.</p>
Feb 10, 2016	<p><b>z/VSE 6.1.0 RSL</b> has been created at the Jan 15, 2016 level and <b>z/VSE 5.2.0 &amp; 5.1.2 RSL</b> have been updated to the Jan 15, 2016 level.</p>
November 27, 2015	<p><b>IBM z/VSE V6.1 is now available</b></p>



## z/VSE related Events

<http://www-03.ibm.com/systems/z/os/zvse/events/>

### z/VSE events

The following IBM z Systems and z/VSE related events are currently planned. If you know a z Systems or z/VSE event and want it to be added to this list, please contact the [z/VSE team](#).

Date	Event
	June 13-17, 2016 <a href="#">IBM z Systems Technical University featuring IBM z Systems and IBM Storage</a> Munich, Germany
	June 23-25, 2016 <a href="#">VM Workshop 2016 (with z/VSE sessions)</a> ↗ Rutgers University - The State University of New Jersey, NJ, USA
	September 19-22, 2016 <a href="#">IBMEdge 2016 featuring IBM z Systems, IBM Power Systems and IBM Storage</a> Las Vegas, NV, USA
	October 24-26, 2016 <a href="#">10th European GSE/IBM Technical University for z/VSE, z/VM and Linux on z Systems</a> ↗ Leipzig, Germany



→ [z/VSE presentations from recent conferences](#)



# Live Virtual Classes

<http://www-03.ibm.com/systems/z/os/zvse/education/>

---

## Upcoming Live Virtual Classes

### Live Demo: Tape-less z/VSE installation

In this session we show how to create an installation disk from an AWS tape and how to use it for z/VSE installation. We also show possible pitfalls and explore how VSEIDISK works.

**Speaker:** Marco Kroll, IBM

**Date:** Tuesday, 12 July, 2016

**Time:** US & Europe: 11:00 AM New York, 04:00 PM London, 05:00 PM Boeblingen, 15:00 UTC

**Or:** Europe & AP: 04:00 PM Japan, 07:00 UTC, 03:00 AM New York, 08:00 AM London, 09:00 AM Boeblingen

**Duration:** 90 Minutes

↪ **Register** for the US & Europe event (11:00 AM New York, 04:00 PM London, 05:00 PM Boeblingen, 15:00 UTC)

↪ **Register** for the Europe & AP event (04:00 PM Japan, 07:00 UTC, 03:00 AM New York, 08:00 AM London, 09:00 AM Boeblingen)

**Note:** Please select your time zone on the top right corner on the registration web page.



---

## Completed Live Virtual Classes

Below you find the playbacks and the charts of the completed live virtual classes:

### z/VSE Latest News (May 4, 2016)

📄 [z/VSE Latest News \(PDF, 1.0MB\)](#)  
Ingolf Salm, IBM

↪ [Listen to the playback of this session](#)

---

### z/VSE 6.1 - a quick overview (December 1, 2015)

📄 [z/VSE 6.1 - a quick overview \(PDF, 1.5MB\)](#)  
Ingolf Salm, IBM

↪ [Listen to the playback of this session](#)

---

### Solution concepts to integrate z/VSE data and applications with your IT (November 10, 2015)

📄 [Solution concepts to integrate z/VSE data and applications with your IT \(PDF, 5.5MB\)](#)  
Wilhelm Mild, IBM

↪ [Listen to the playback of this session](#)

## Requirements

<https://www-03.ibm.com/systems/z/os/zvse/contact/requirement.html>

- If you think that a function or feature is missing in z/VSE, z/VSE related products, or on this web page, please submit your requirement through the **Request for Enhancement (RFE)** tool

### For z/VSE requirements please select the following:

Brand = *Servers and System Software*  
Product family = *z Systems Software*  
Product = *z/VSE*  
Component = *You may choose the component*  
Operating system = *IBM z/VSE*

### For CICS Transaction Server requirements please select the following:

Brand = *Servers and Systems Software*  
Product family = *Transaction Processing*  
Product = *CICS Transaction Server*  
Component = *Runtime or Explorer*  
Operating system = *IBM z/VSE*



To get informed about new z/VSE related RFEs, you can join the z/VSE Group in the RFE tool  
[https://www.ibm.com/developerworks/rfe/execute?use\\_case=groupLanding&GROUP\\_ID=1394](https://www.ibm.com/developerworks/rfe/execute?use_case=groupLanding&GROUP_ID=1394)

## Contact the z/VSE Team

<https://www-03.ibm.com/systems/z/os/zvse/contact/contact.html>

- If you have comments or suggestions to make about the z/VSE home page, or if you have questions about the z/VSE operating system, or z/VSE products complete the form below; and then select Submit
- This form should **not** be used to report technical problems with z/VSE or z/VSE products. Please open a PMR (Problem Management Record) instead

Salutation:\* (e.g. Mr., Mrs.)

First name:\*

Last name:\*

E-mail address:\*

Phone number:

Your country or region:\*

Help us answer your message:

Message category:\*

Subject:

Message:\*

<https://www-947.ibm.com/support/servicerequest/Home.action>

[→ Open a new service request](#)

## Be Social with z/VSE



**z/VSE Homepage:**  
[www.ibm.com/zVSE](http://www.ibm.com/zVSE)

 **Twitter**  
[www.twitter.com/IBMzVSE](http://www.twitter.com/IBMzVSE)

 **z/VSE Blog**  
[www.ibm.com/developerworks/mydeveloperworks/blogs/vse/](http://www.ibm.com/developerworks/mydeveloperworks/blogs/vse/)

 **LE z/VSE Blog**  
[www.ibm.com/developerworks/community/blogs/lezvse/](http://www.ibm.com/developerworks/community/blogs/lezvse/)

---

**Join System z Advocates (Subgroup z/VSE)**  
[www.linkedin.com](http://www.linkedin.com)



**Read at the IBMs System z Blog**  
[www-304.ibm.com/connections/blogs/systemz/](http://www-304.ibm.com/connections/blogs/systemz/)

**Connect at Facebook**  
[www.facebook.com/IBMsystemz](http://www.facebook.com/IBMsystemz)

**Watch on YouTube**  
[www.youtube.com/user/IBMSystemZ](http://www.youtube.com/user/IBMSystemZ)

## Questions ?



THANK YOU